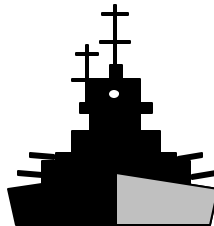


ERP

4 Program Overview

reference guide

August 00



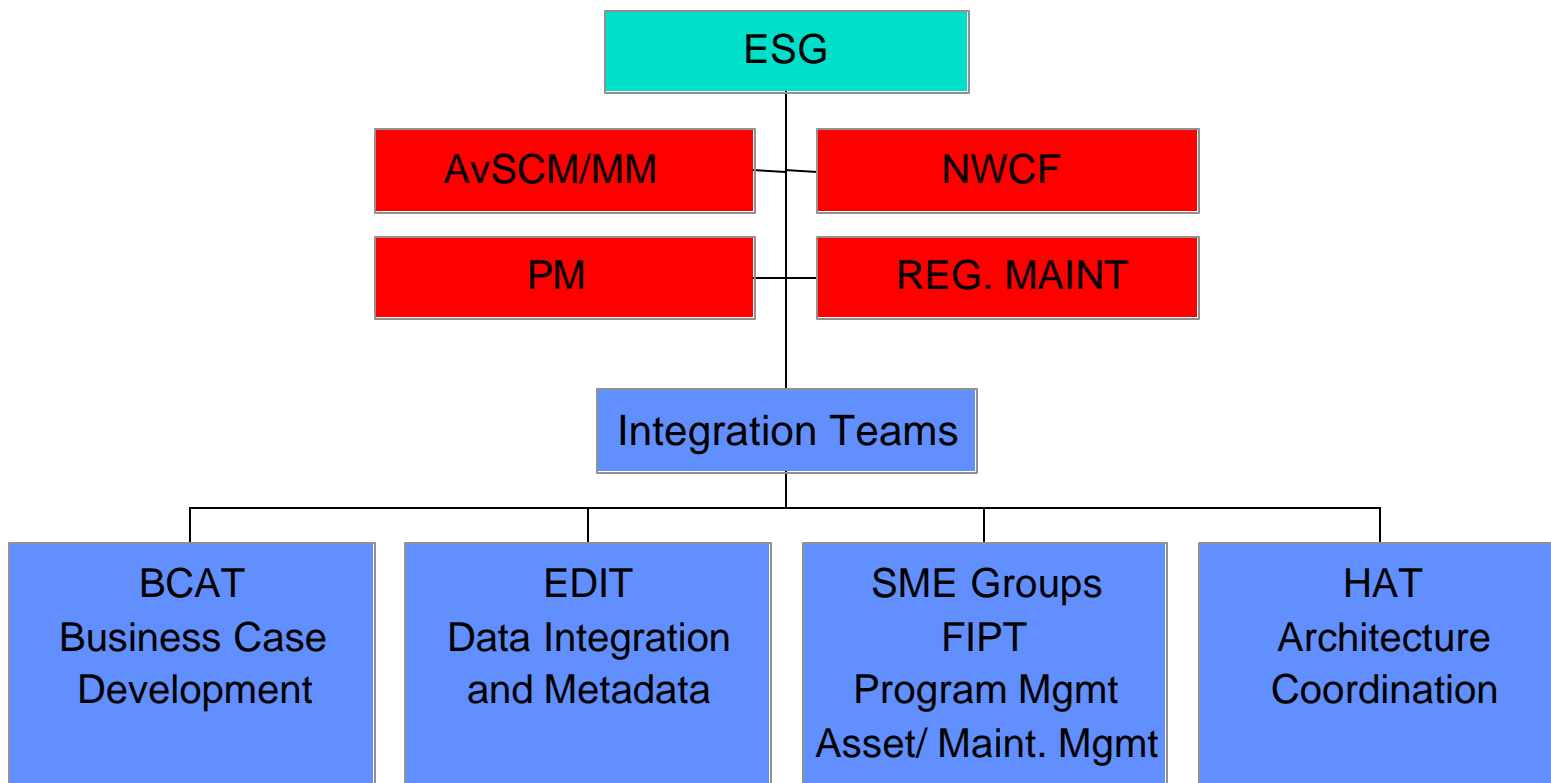
Version 2.0

Contents

- Integration Efforts
- Program Specific Information
 - Regional Maintenance
 - Program Management
 - Financial Management
 - AvSCM/MM

Integrating the Programs

Programs & Integration Teams



SAP Module Matrix

	Regional Maint.	Program Mgt.	Financial Mgt.	AvSCM/MM
Materials Management (MM)	x	x	x	x
Plant Maintenance (PM)	x	x	x	x
Controlling (CO)	x	x	x	x
Project Systems (PS)	x	x	x	x
Financial Accounting (FI)	x	x	x	x
Human Resources (HR)	x	x	x	o
Quality Management (QM)	x	x		o
Workflow (WF)	x	x		o
Industry Solutions (IS)		x	x	x
Sales & Distribution (SD)		x	x	x
Asset Management (AM)	x	x		x
Production Planning (PP)		x		x
Funds Management (FM)	x		x	
Purchasing (PR)			x	
Travel & Expense (T&E)			x	
Investment Management (IM)	x			
Treasury & Cash (TR)			x	
x = module to be included in SAP				
o = module under consideration				

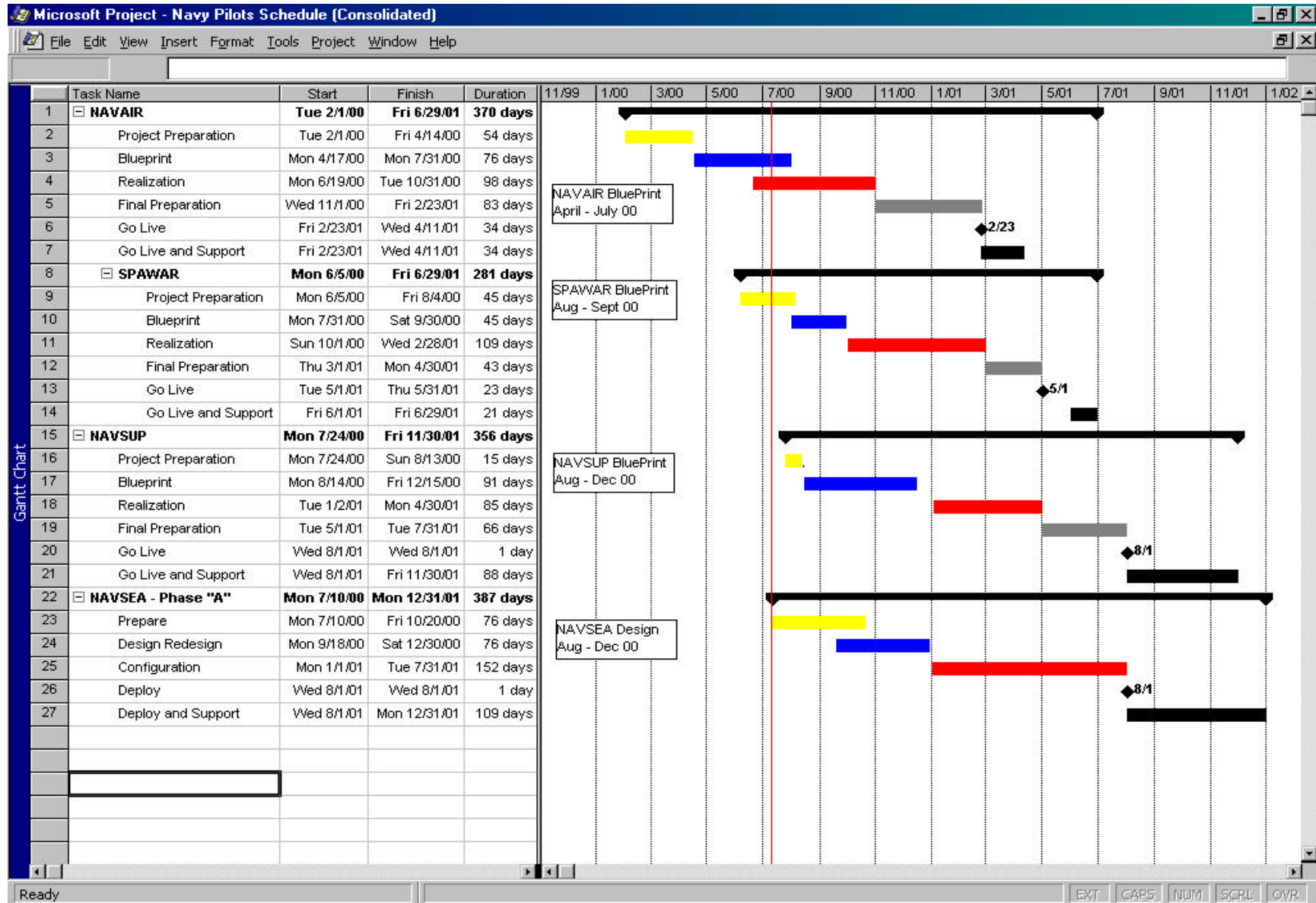
Integrators/Subcontractors/Bolt-Ons

	Regional Maint.	PM Mgt.	Financial Mgt.	AvSCM/MM
SAP R/3 Version	4.6	4.6	4.6	4.6
Integrator	IBM	KPMG (prime)	PricewaterhouseCoopers	EDS
		SAIC (core)		
		IBM (core)		
Subcontractor	SAP Lockhead Martin DSIC SAIC/AMSEC KPMG	SAP Lockhead Martin Sierra Consulting LLC WDS MATCOM	SAP UII Logicon/INRI CSC	SAP Deloitte
Bolt-Ons	OROS Oracle Documentum Jet Form i2 MQ - Series Plantware Abaco	OROS Oracle Documentum Jet Form ESRI MQ - Series NAVAIR Corp. Sys. Abaco	OROS Prologix Major Procurement (TBD)	Manugistics Xelus

SAP Terminology

- **Interface** - Data passing back and forth between a legacy system and SAP (or any COTS product). An interface solution passes data between two systems that have not been designed to work together. Data retrieved will not be “real time”. We will need to create interfaces for the following situations: external DOD mandated systems, internal systems not replaced by ERP software and external entities such as vendors or customers.
- **Bolt-on** - Any complimentary application designed to be compatible with another application. Bolts-ons are not a part of the SAP software, but are part of the suite of software that has been certified to work with SAP and to provide the functionality required. Bolt-ons do work off of the same database as the SAP core software, therefore bolt-ons are fully integrated and “real time”.
- **Integrated** - A seamless connection between data, the applications are running from the same database, eliminating duplication. Bolt-ons are an example of integrated data and systems.

ERP Consolidated Timeline



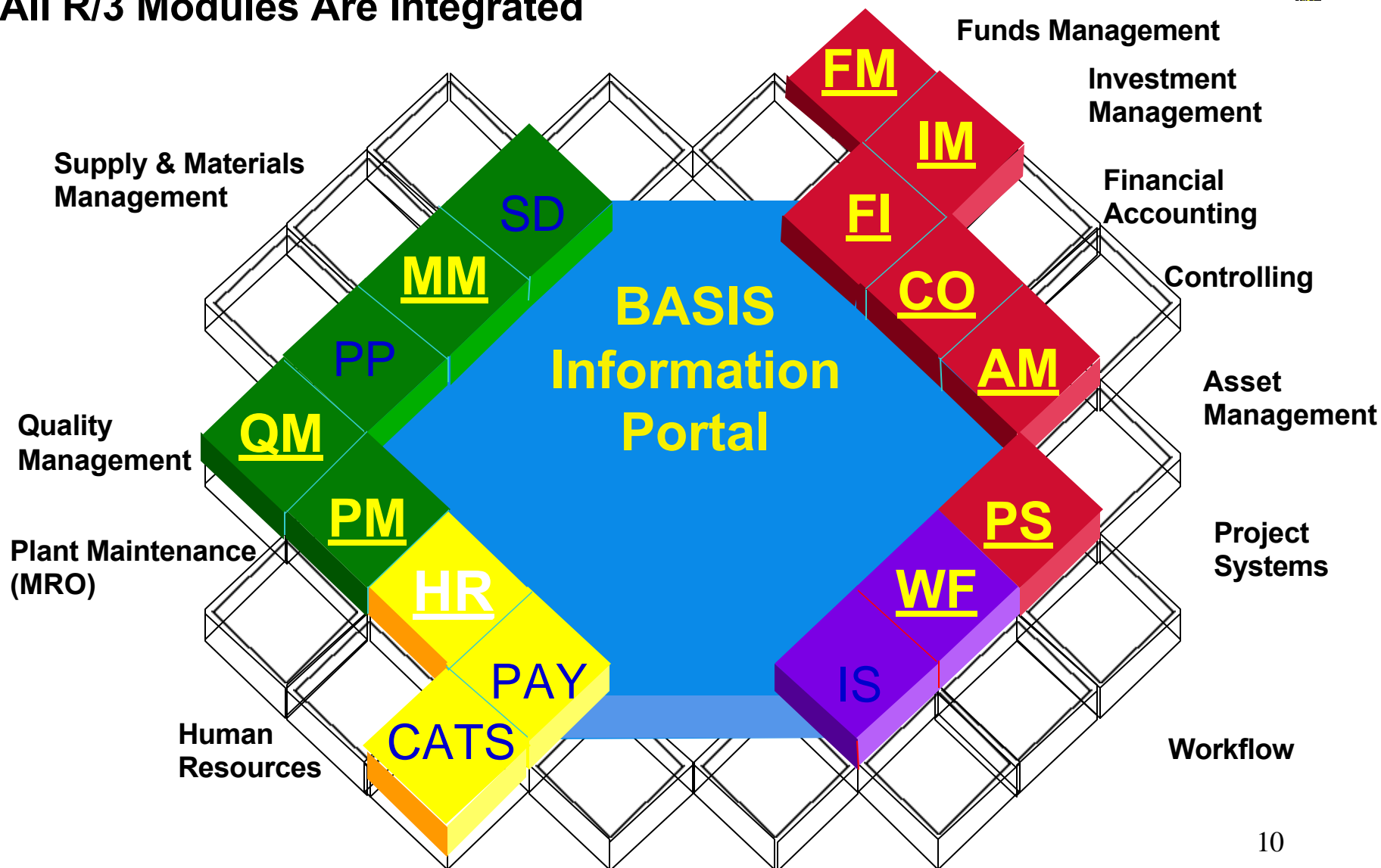
Program Specific Information



Regional Maintenance

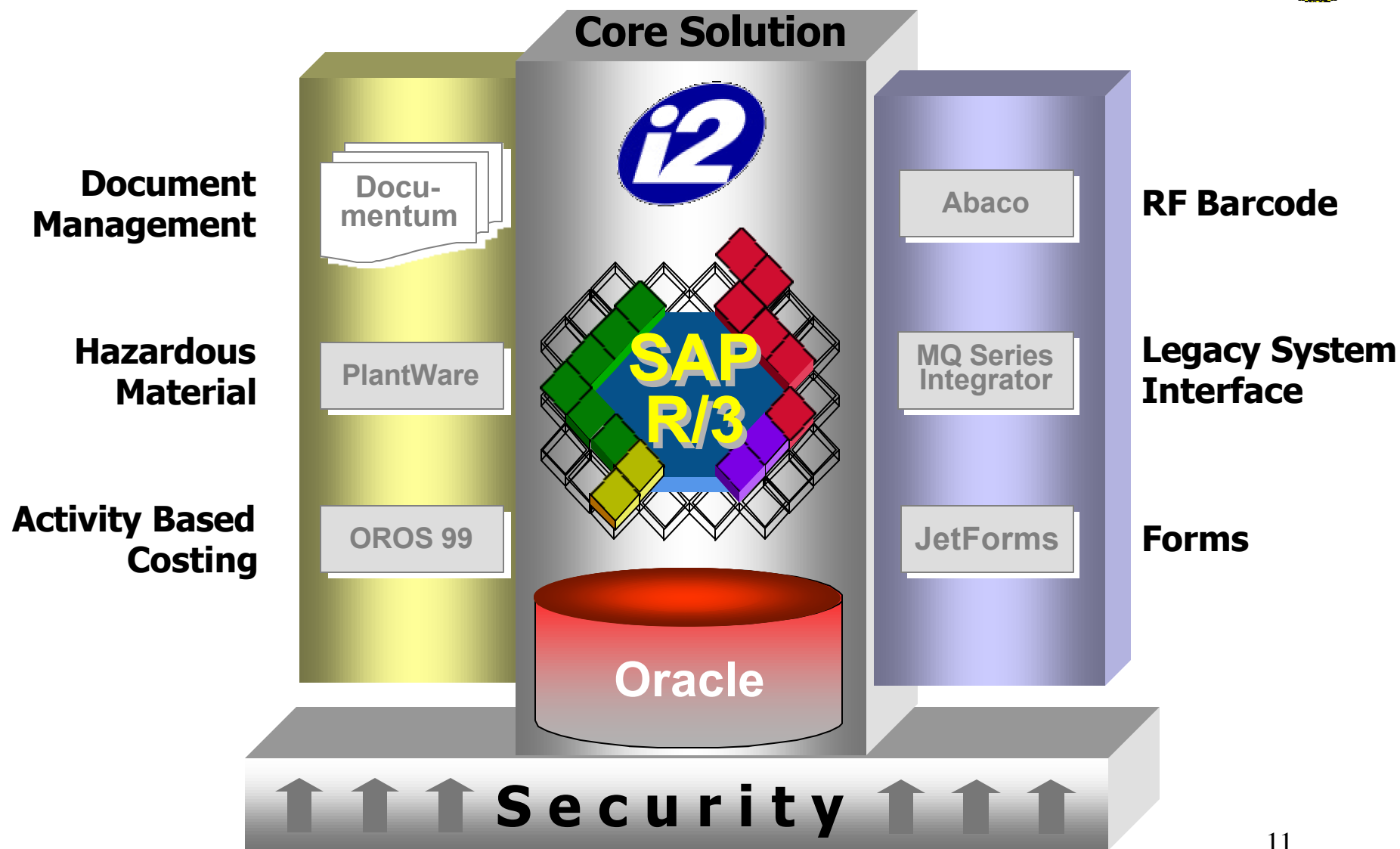


All R/3 Modules Are Integrated



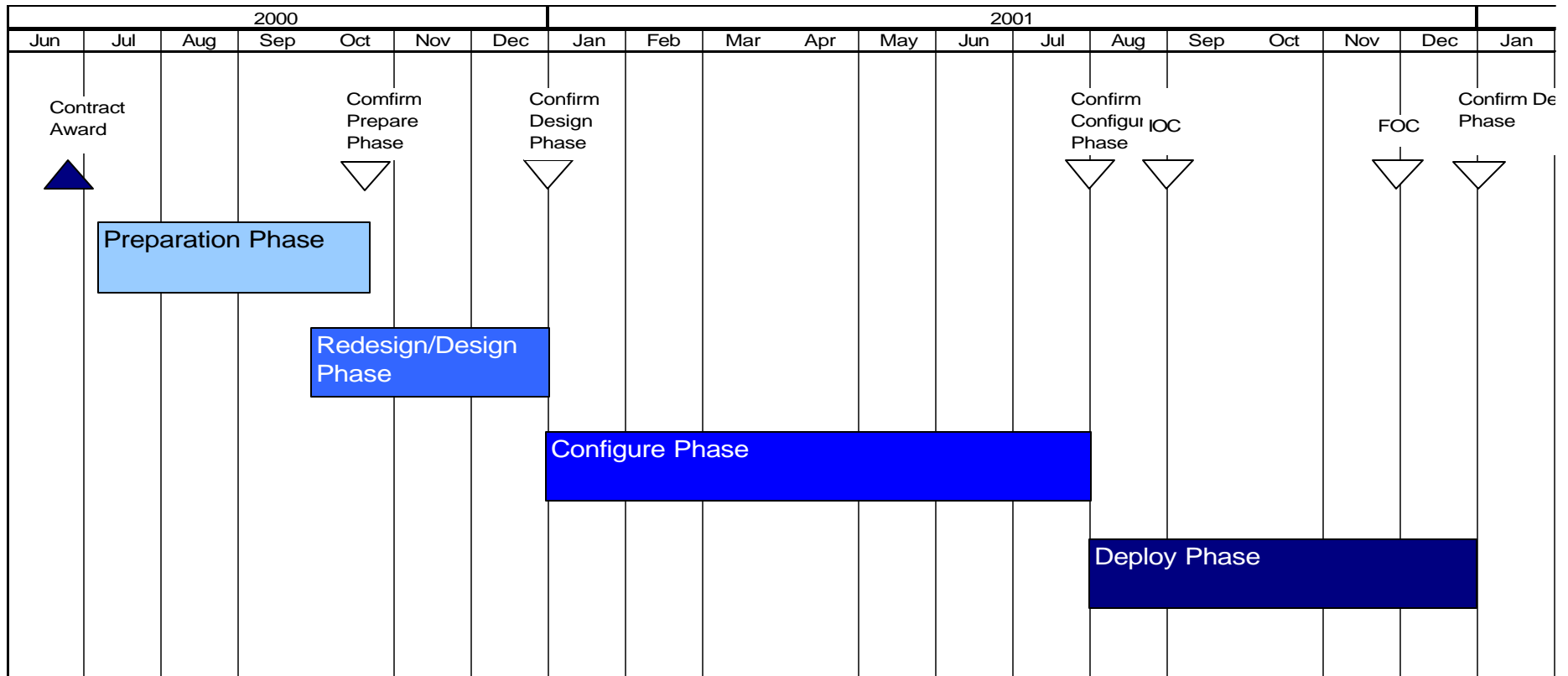


Our Vendor Partners





Regional Maintenance Schedule - 2 years





Regional Maintenance Phases - 6 Years



FY 00 01 02 03 04 05 06

Phase	Base Yr. One	Second Year	Third Year	Fourth Year	Fifth Year	Sixth Year	Seventh Year	No. of Concurrent Users
A MidLANT		██████████	-----					300
B NNSY			██████████					+1500
C Data Svstms			██████████					
D Remaining Depots and Regions			██████████	██████████	██████████	██████████		+5437
E SUPSHIPS			██████████					+2163
F Opr Lvl			TBD	----->				

Phase A: I&D pilot

Phase B: NNSY

Phase C: National systems

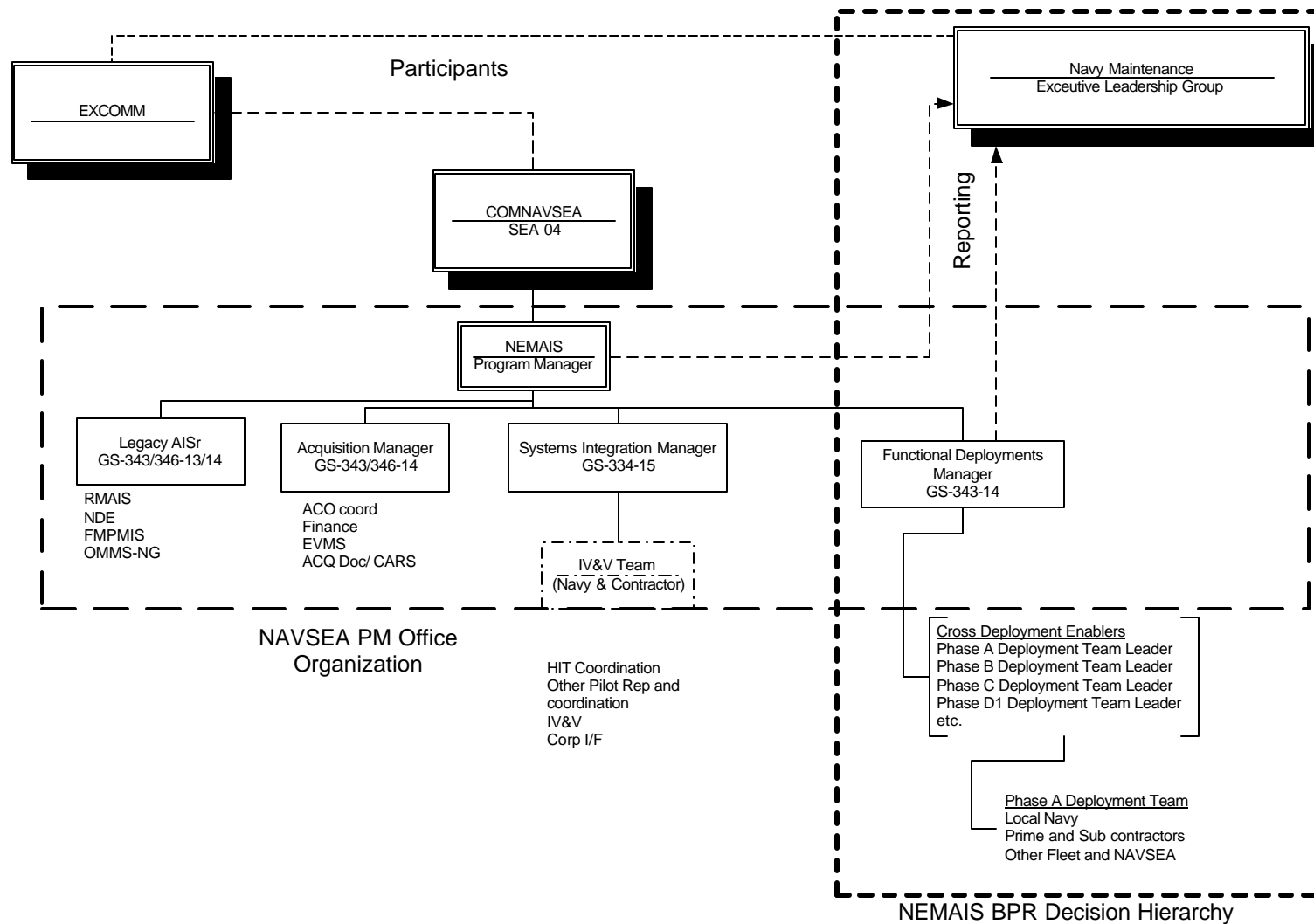
Phase D: regional deployments

Phase E: Supships

Phase E: shipboard (may be in A)



Regional Maintenance Org. Chart





Reg. Maint.Org Chart Detail

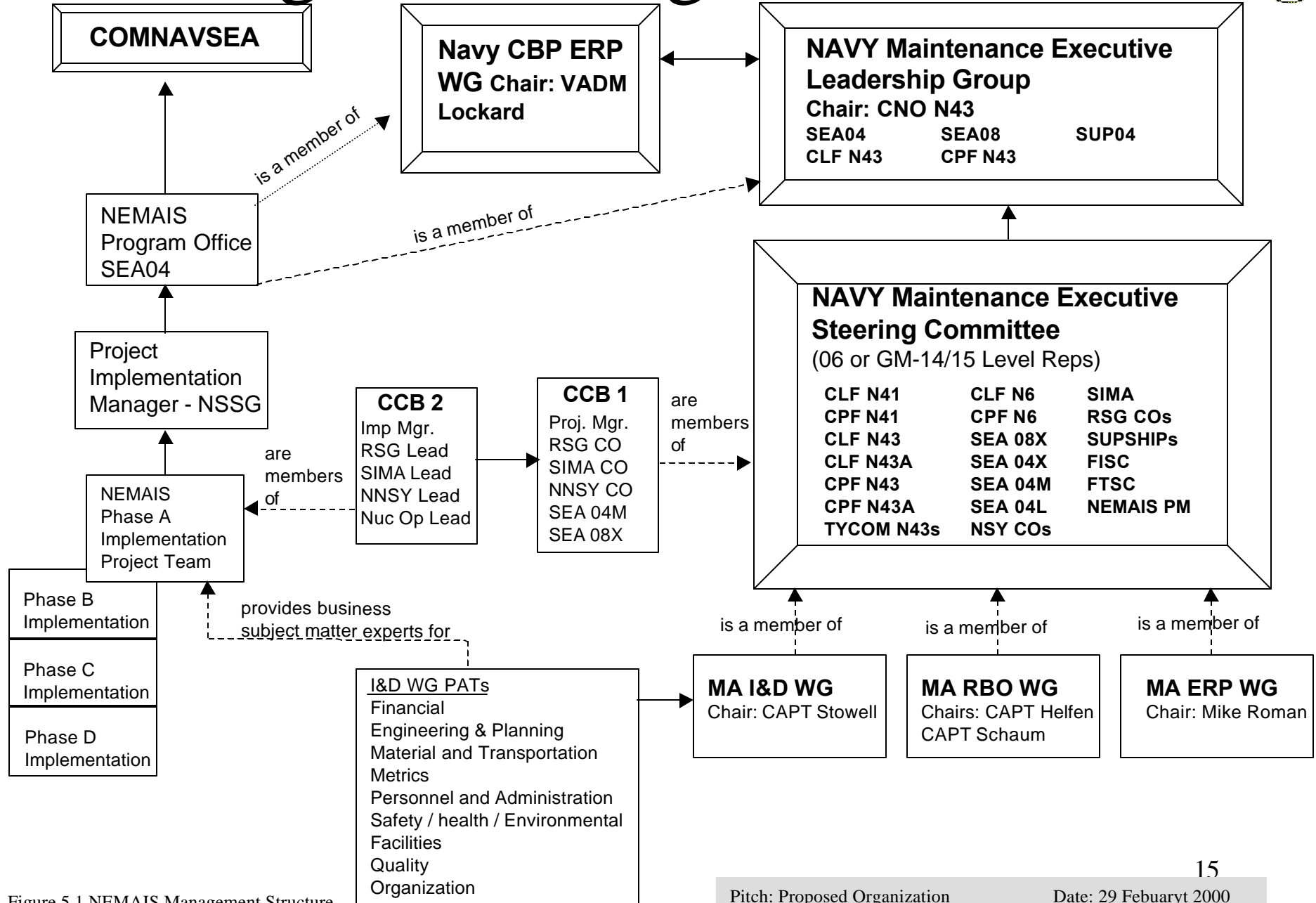
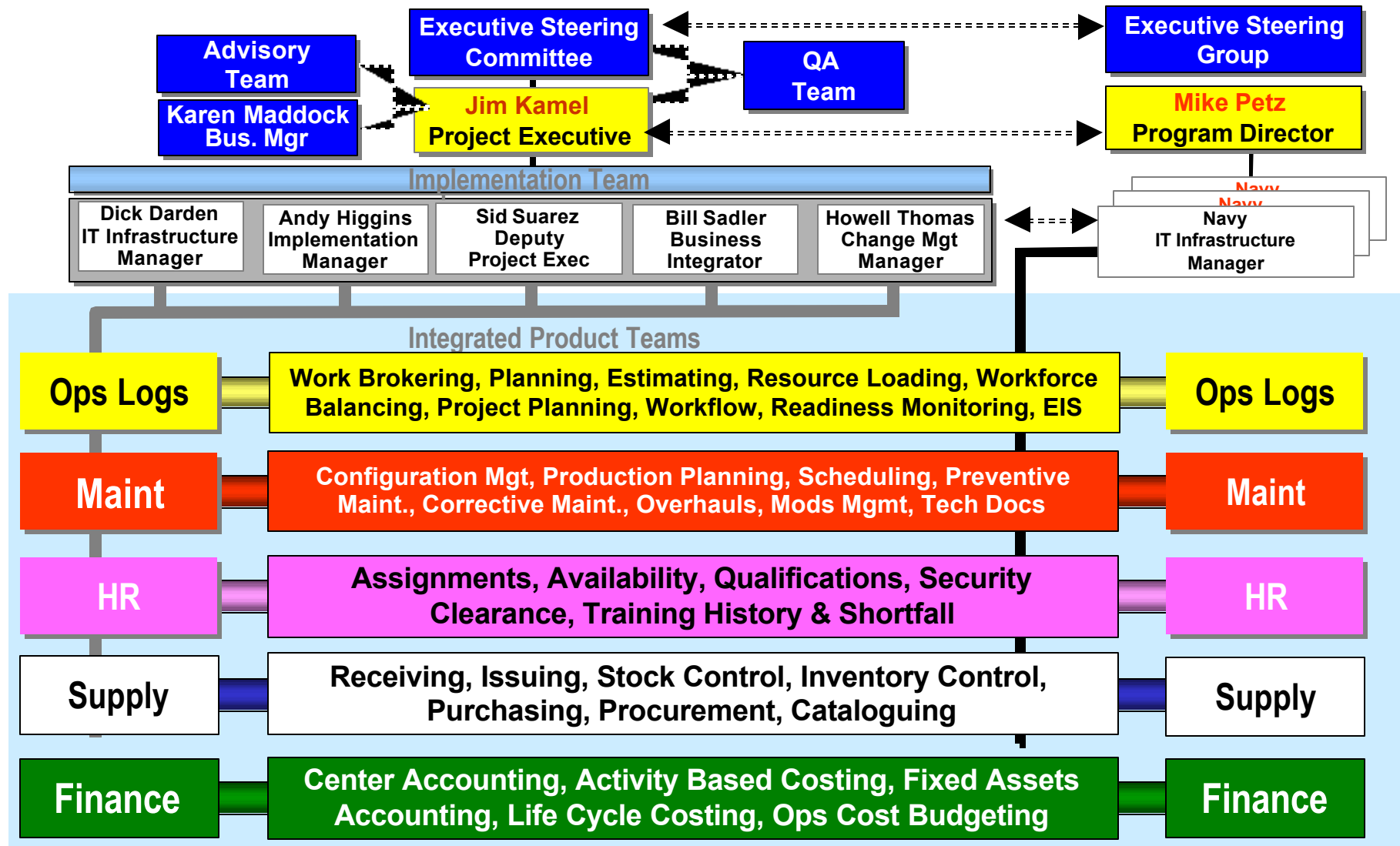
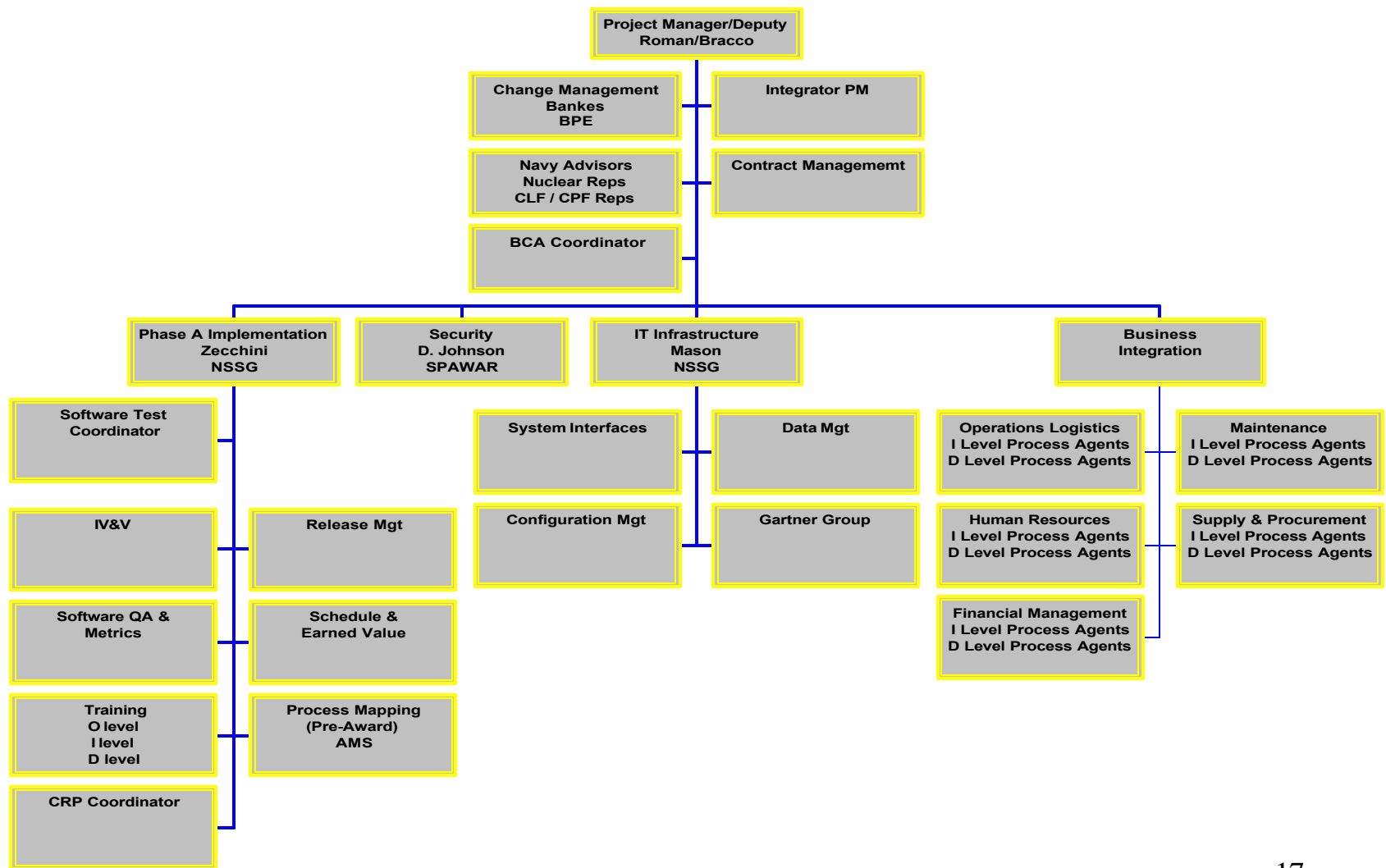


Figure 5.1 NEMAIS Management Structure

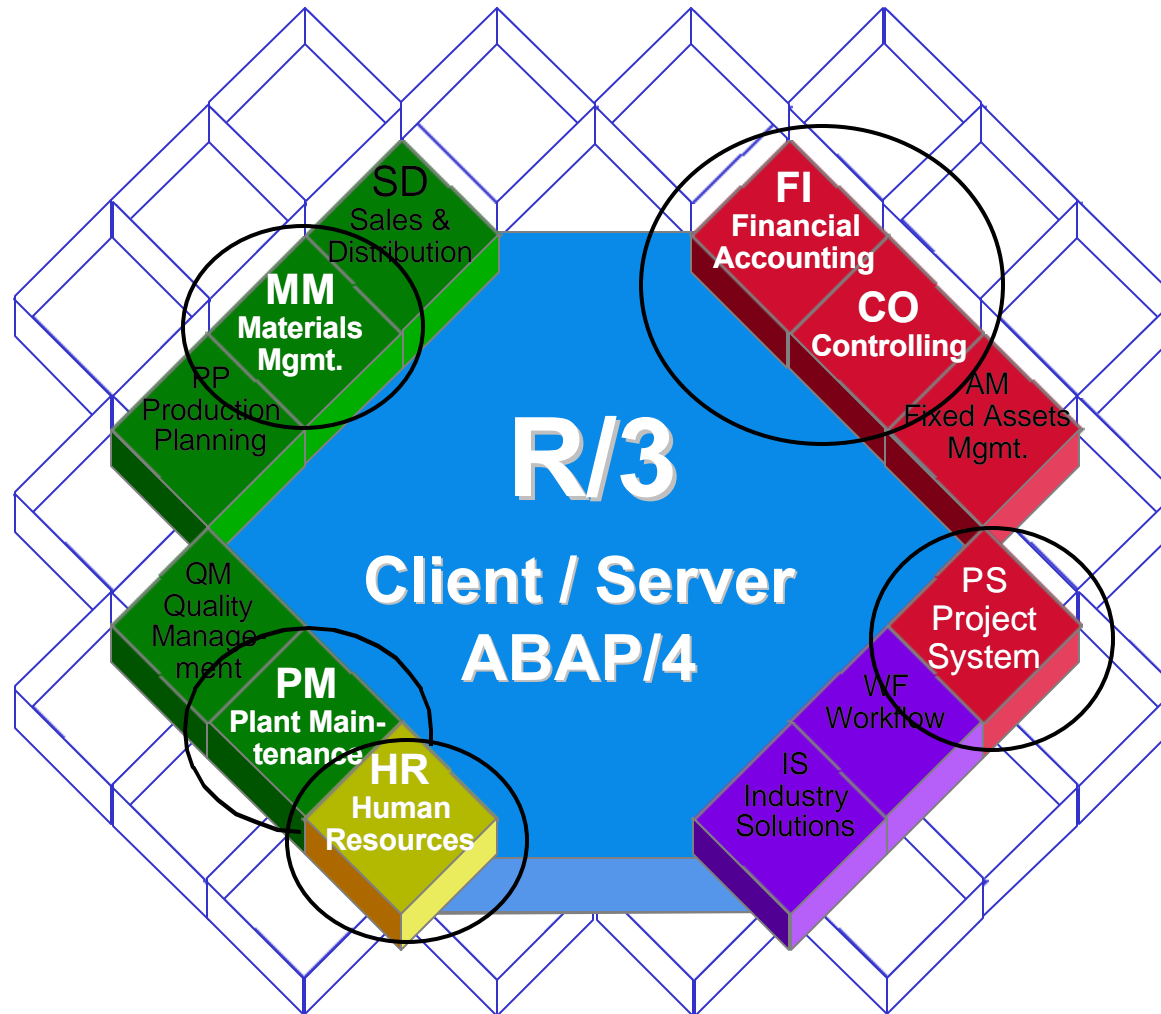
The e-NMS Team Organization



Regional Maintenance Phase A Project Team



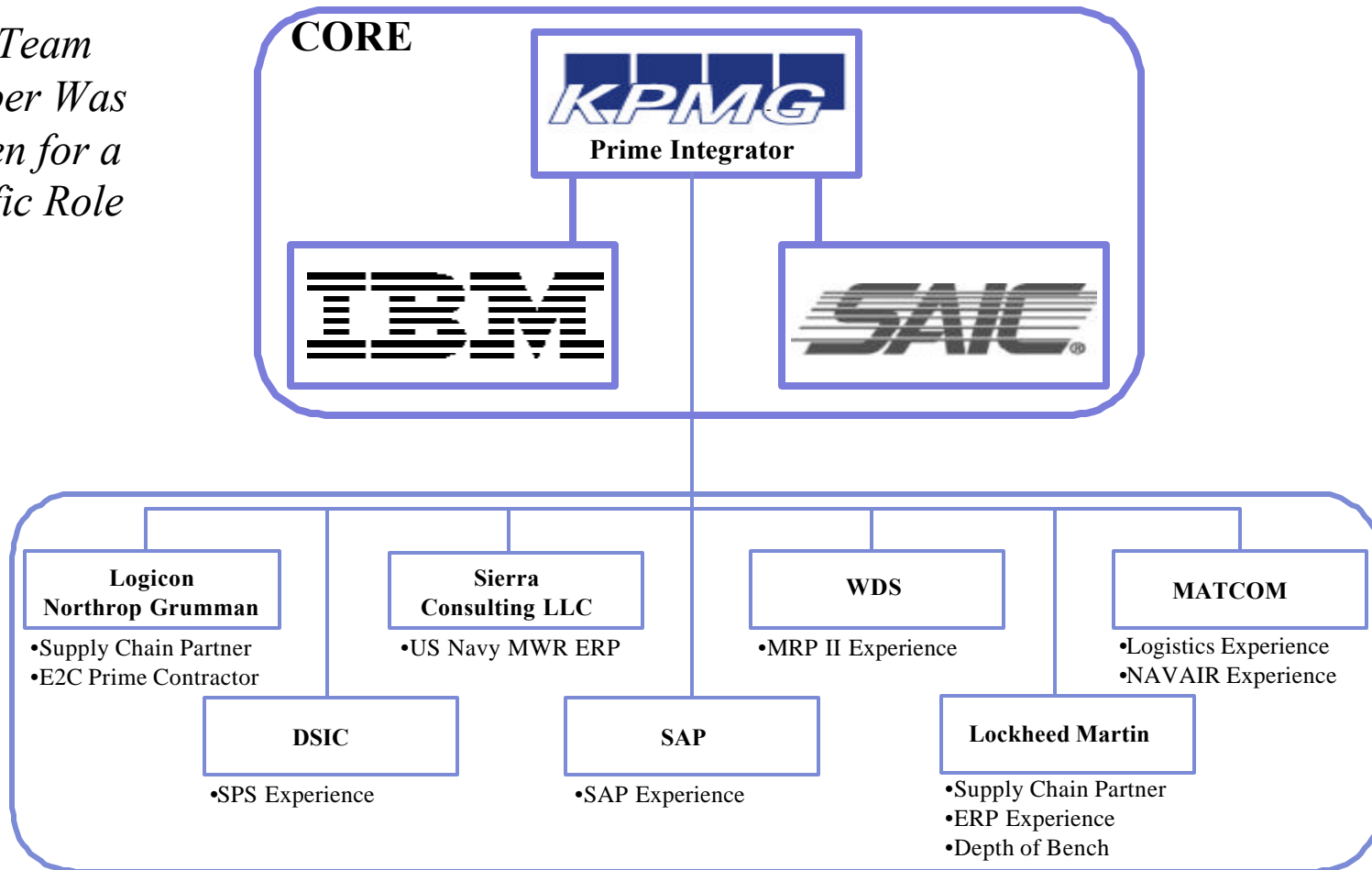
Program Management





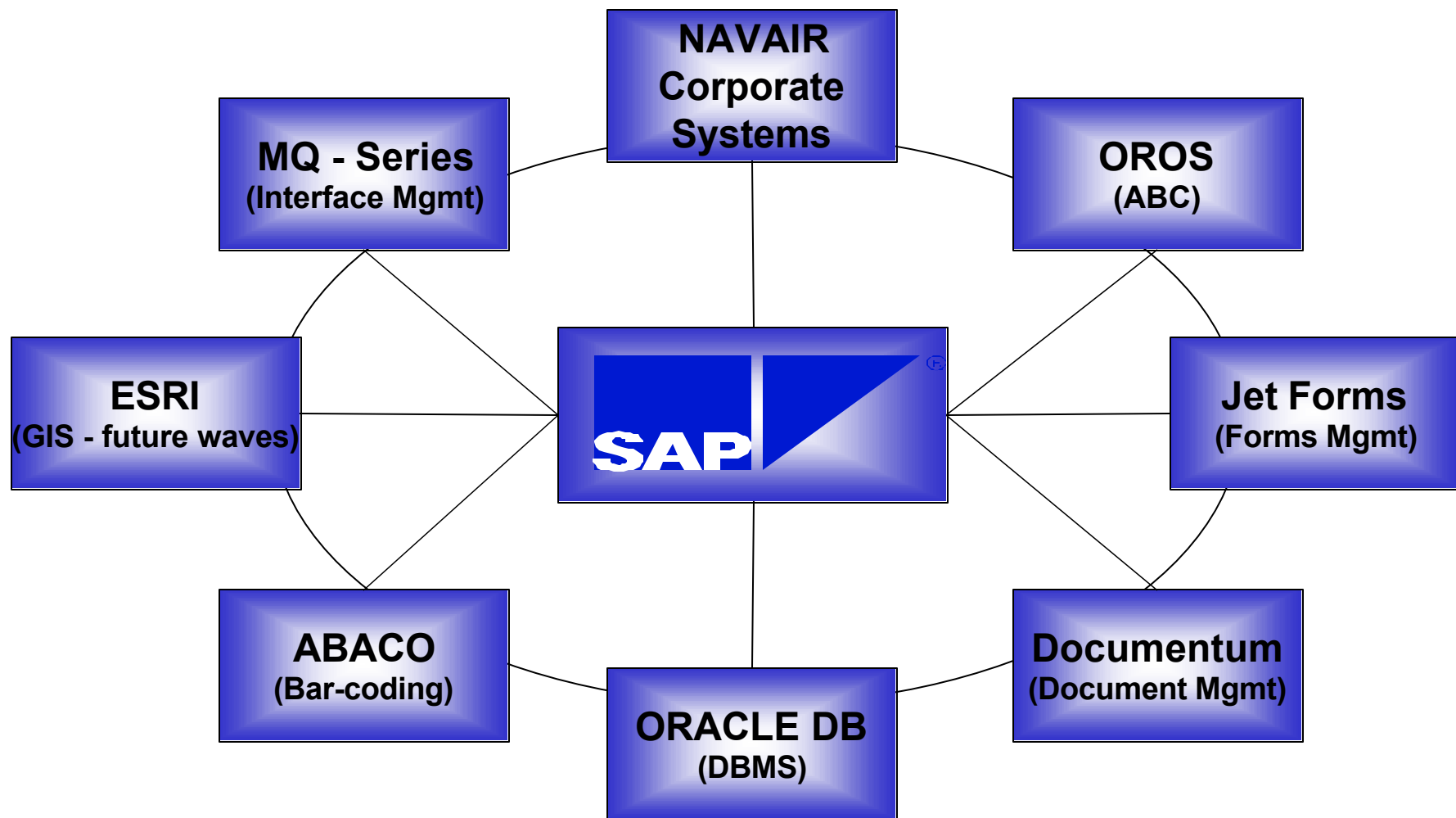
Team KPMG

Each Team Member Was Chosen for a Specific Role



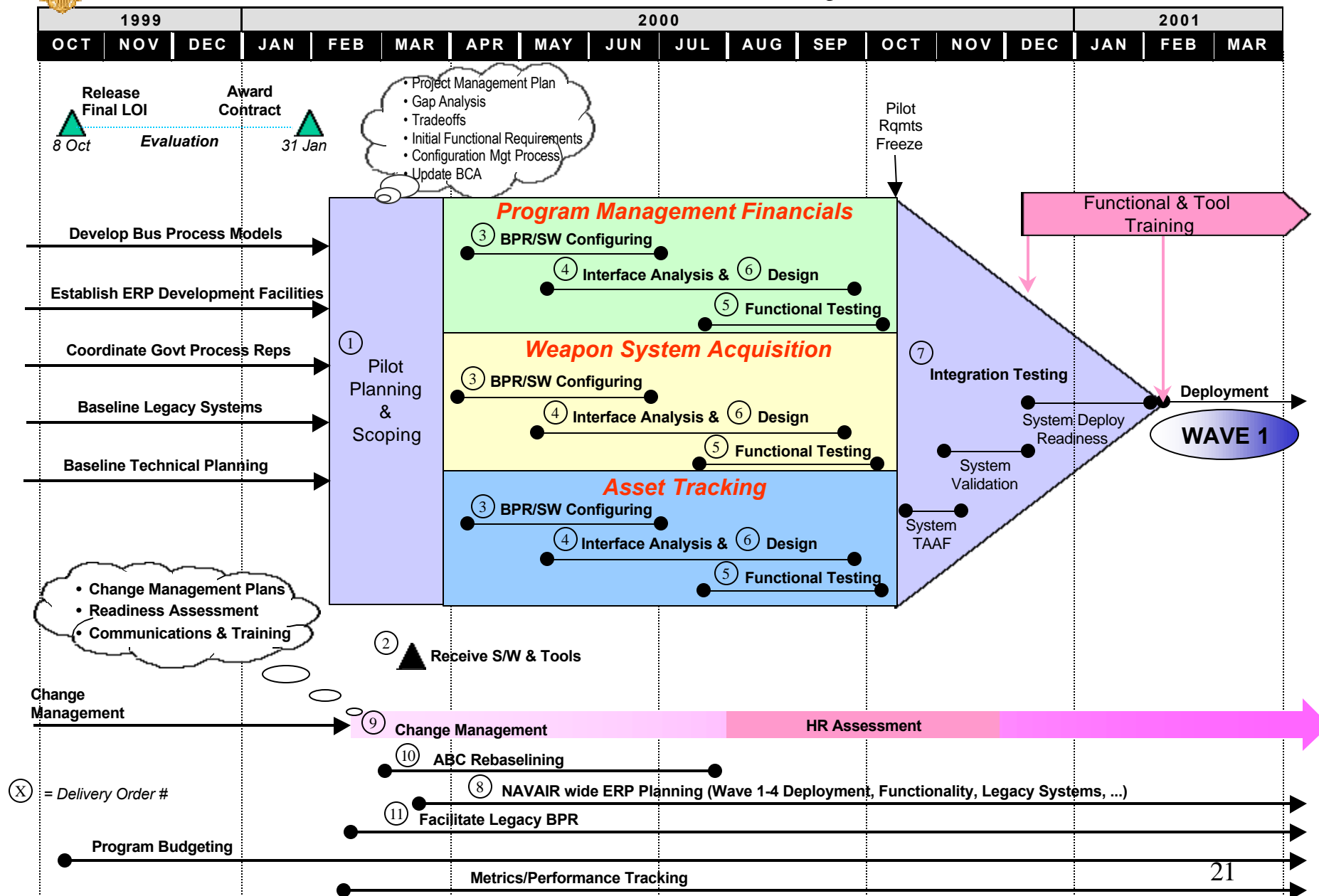


NAVAIR Proposed Solutions



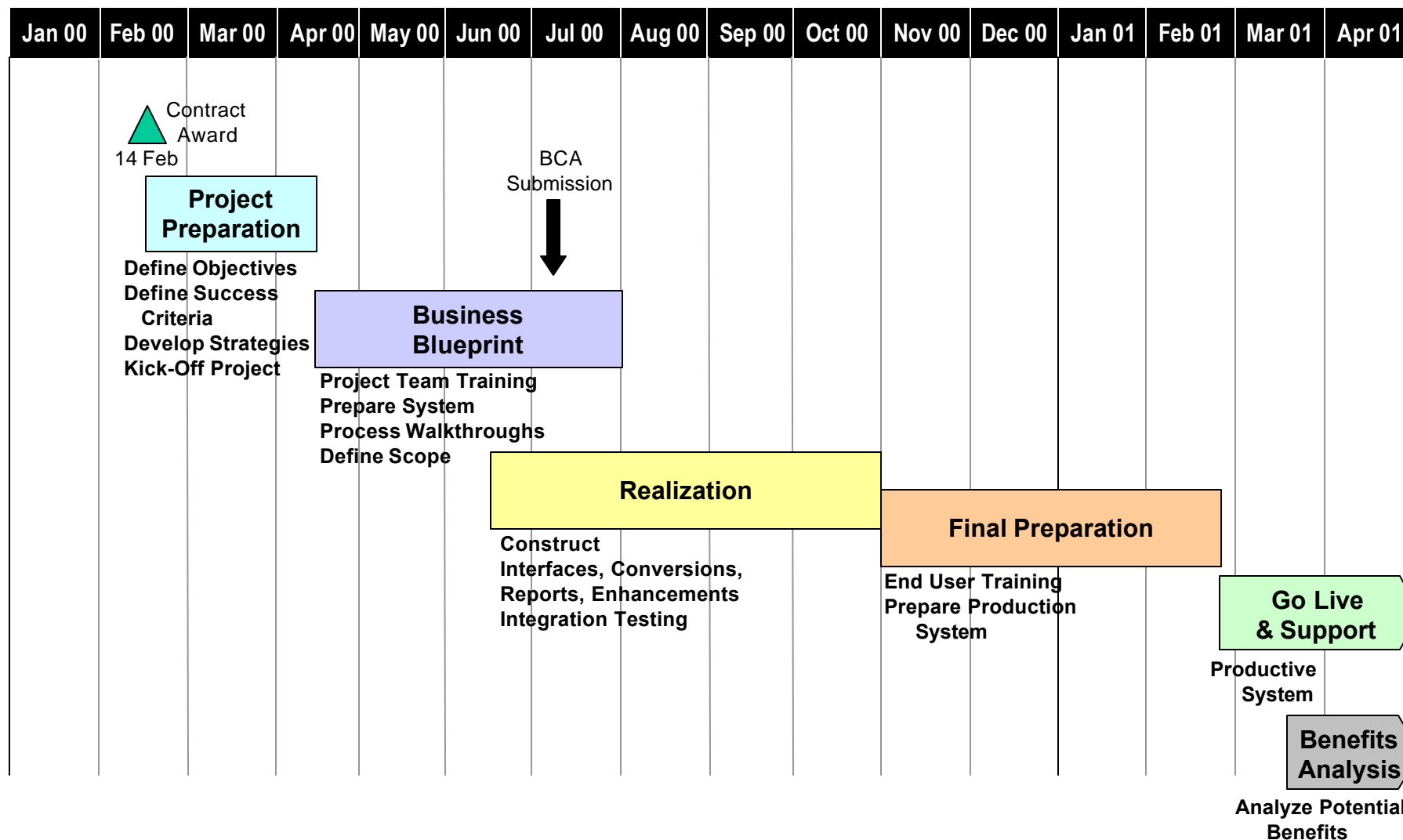
PM PILOT - 3 years

Updated 08 Nov 99



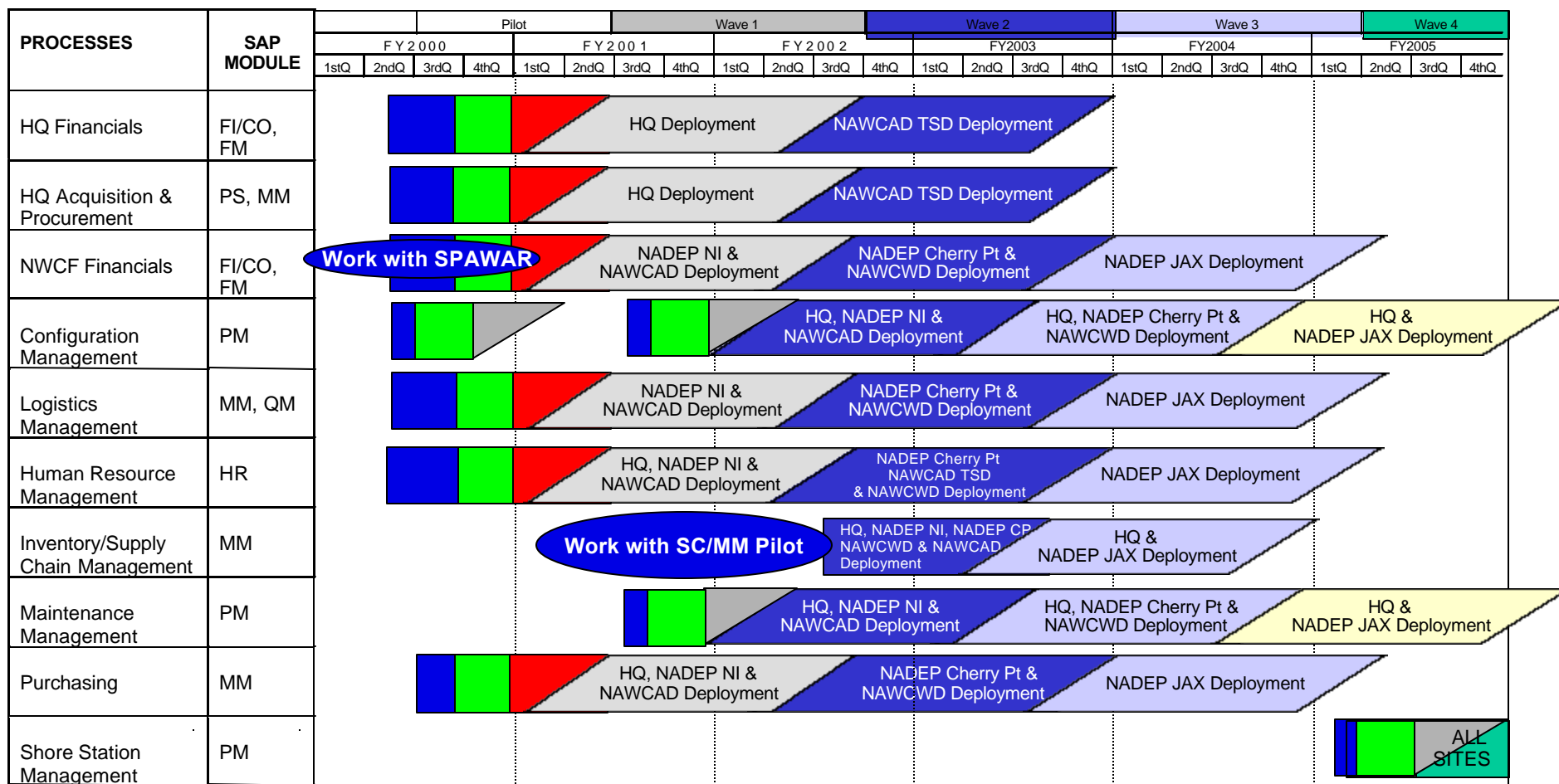


PM Pilot Schedule - 2 years





NAVAIR ERP Notional Deployment Schedule



[Blue Box] Plan (Business Blueprint)

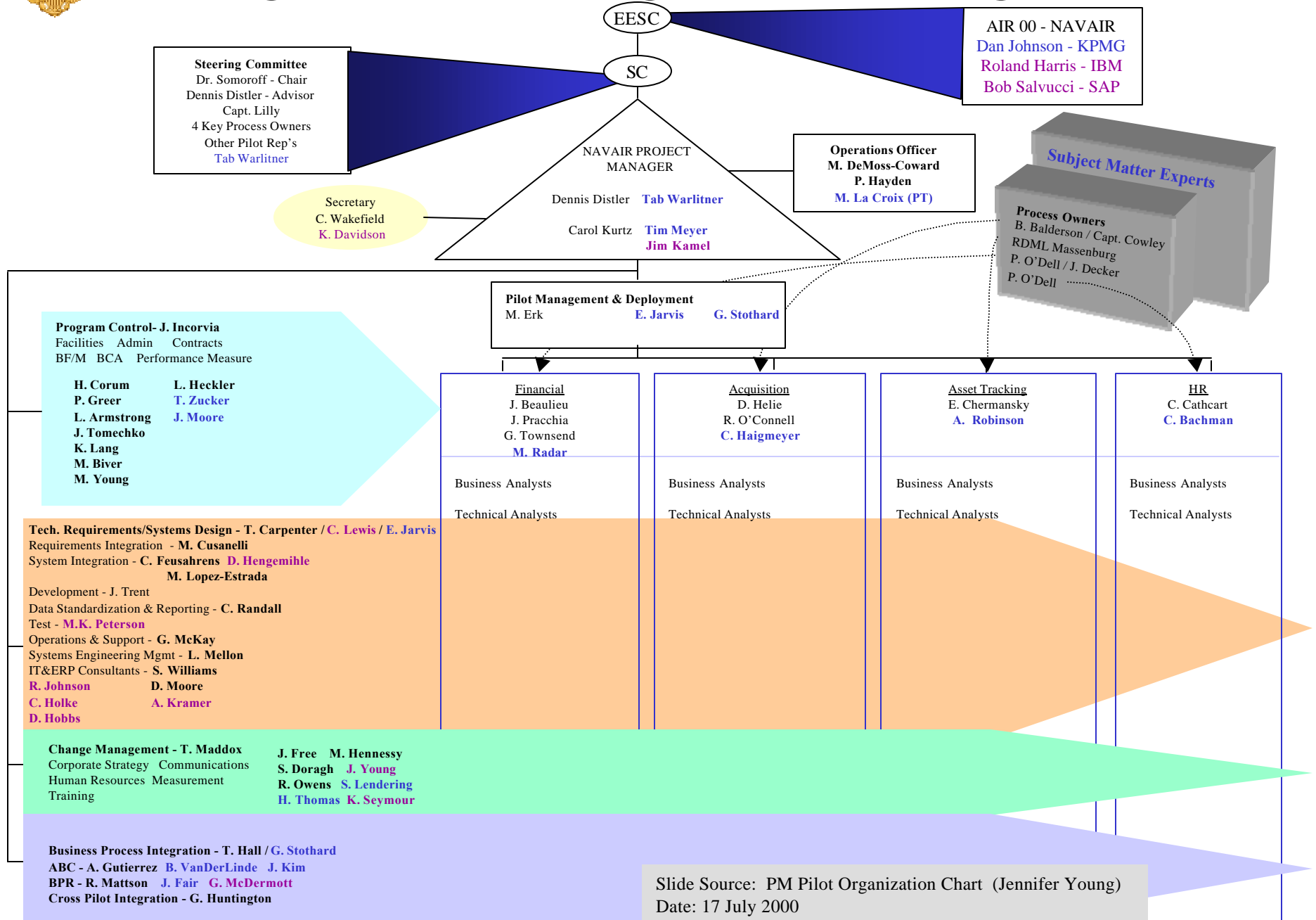
[Green Box] Develop (Realization)

[Red Box] Test

[Light Blue Box] Deploy

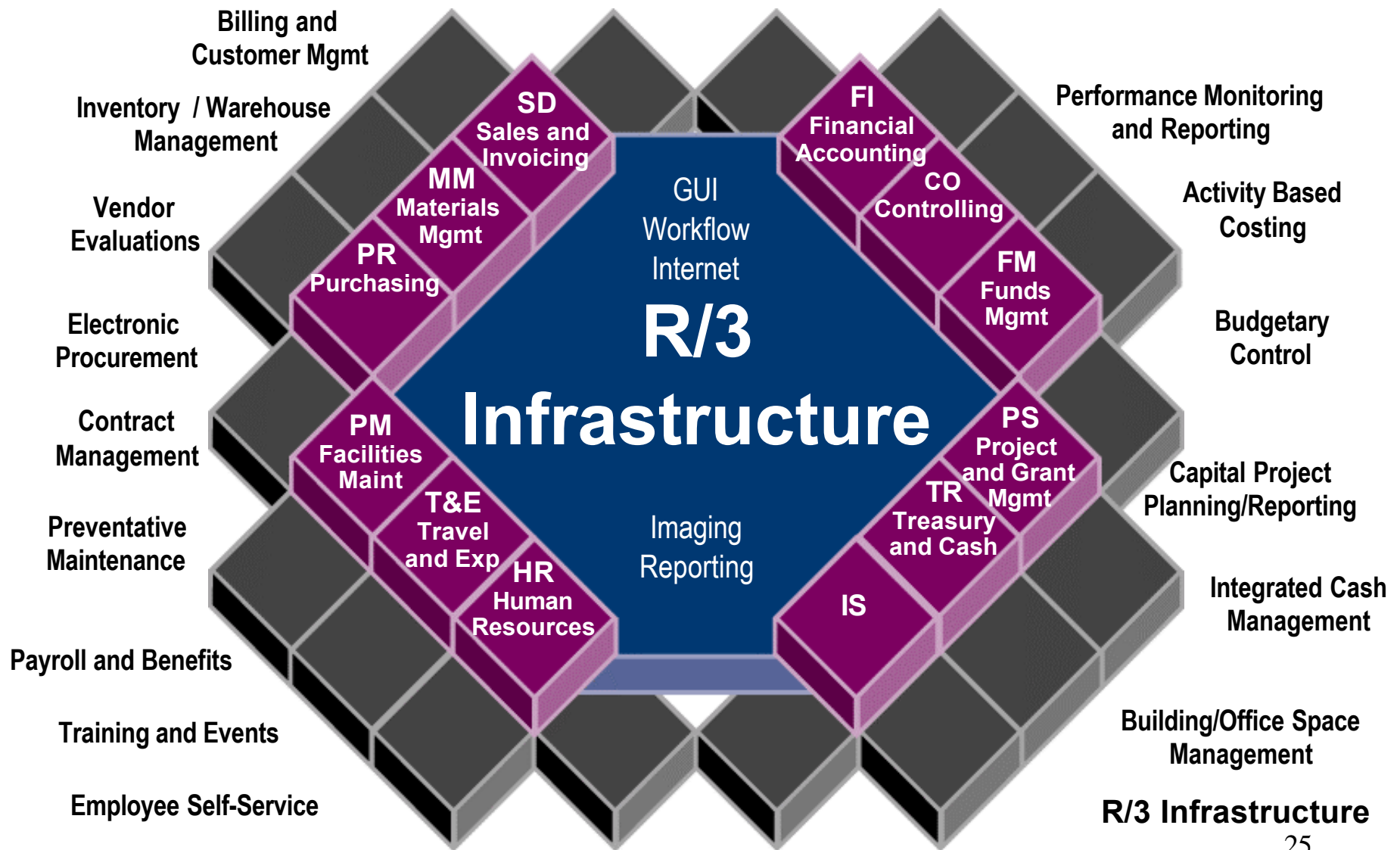


Program Management Org Chart

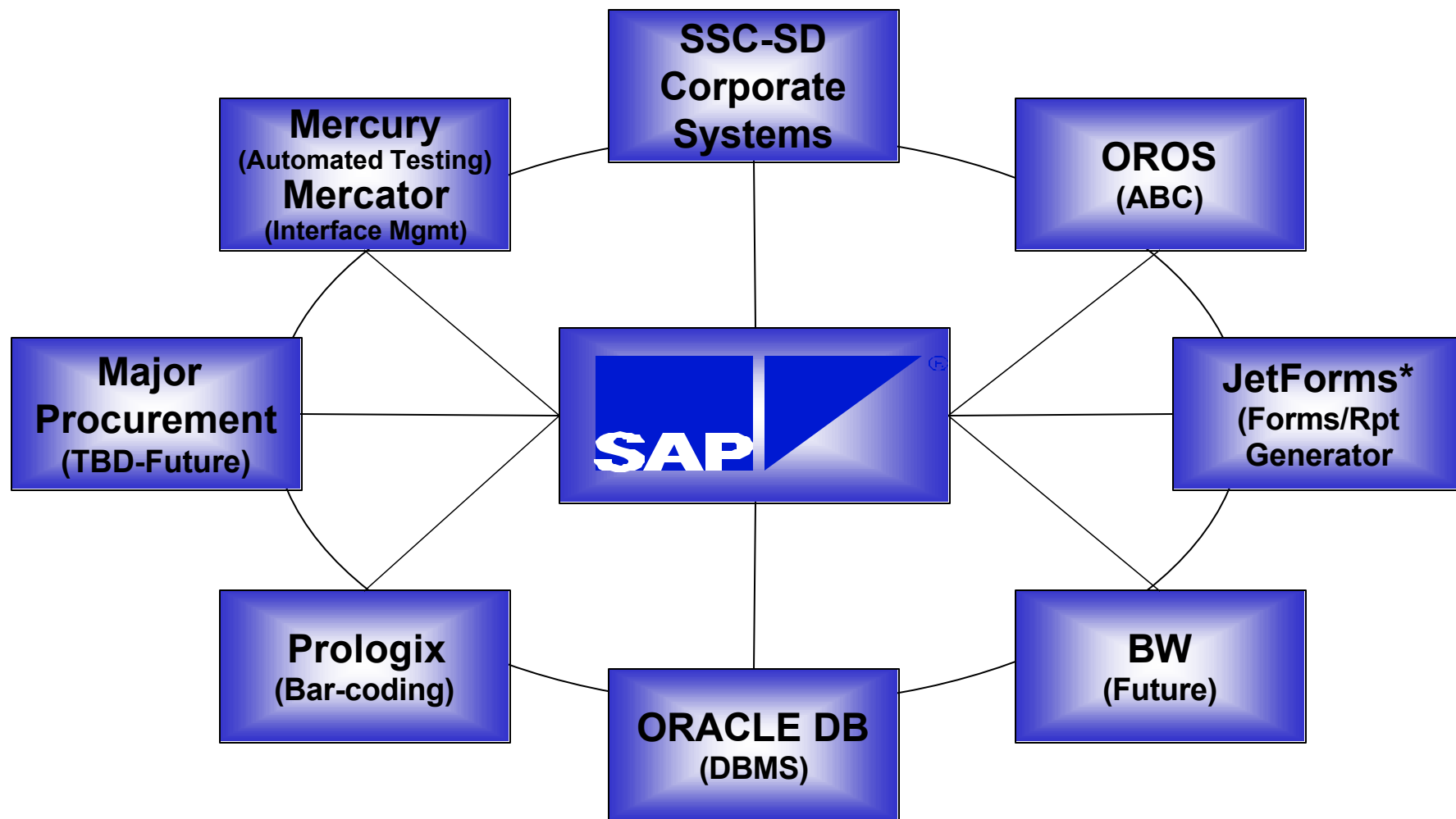


Slide Source: PM Pilot Organization Chart (Jennifer Young)
Date: 17 July 2000

Financial Management



SSC-SD Proposed Solutions

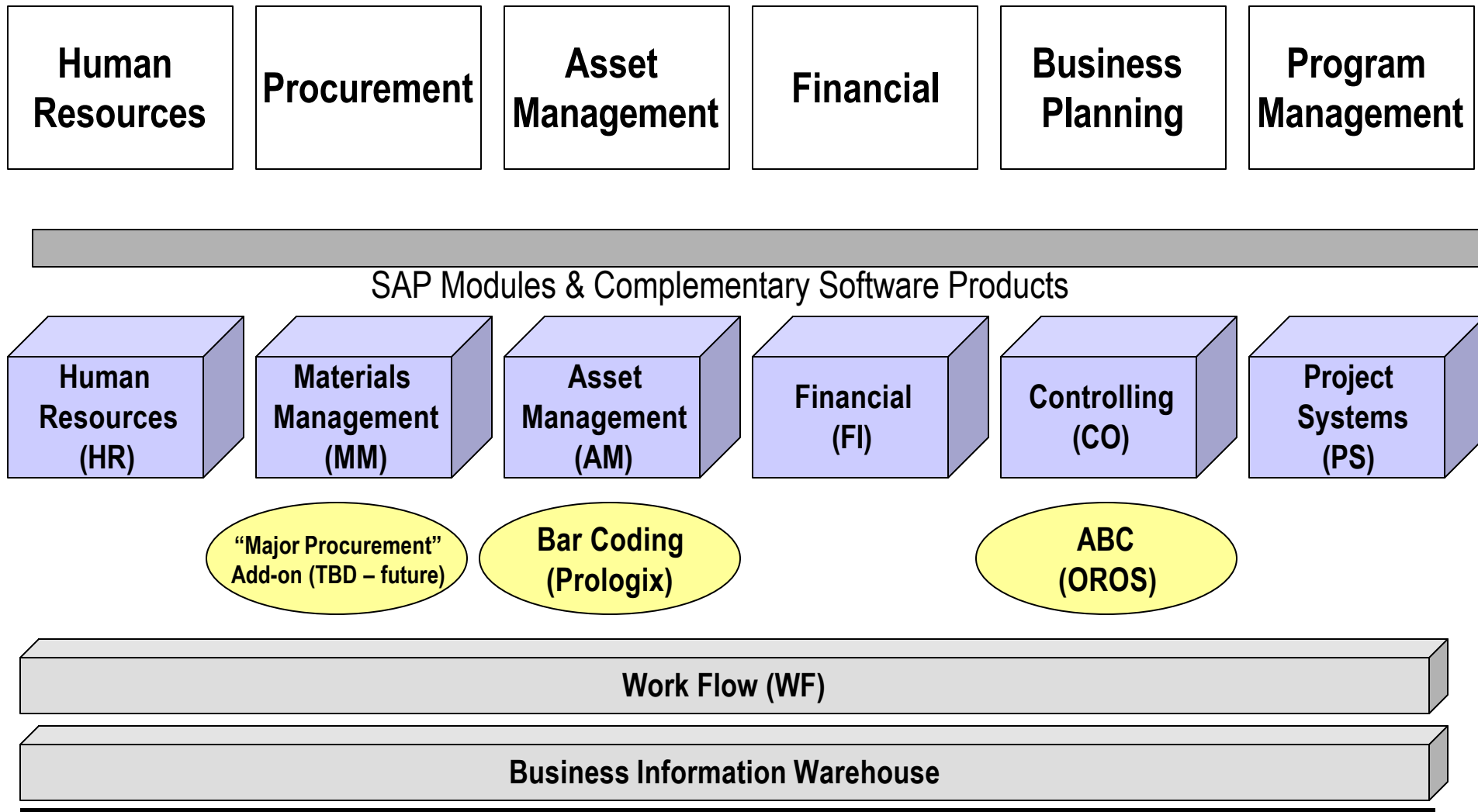


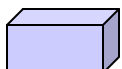
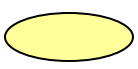
*Currently proposed to be coded in ABAP.

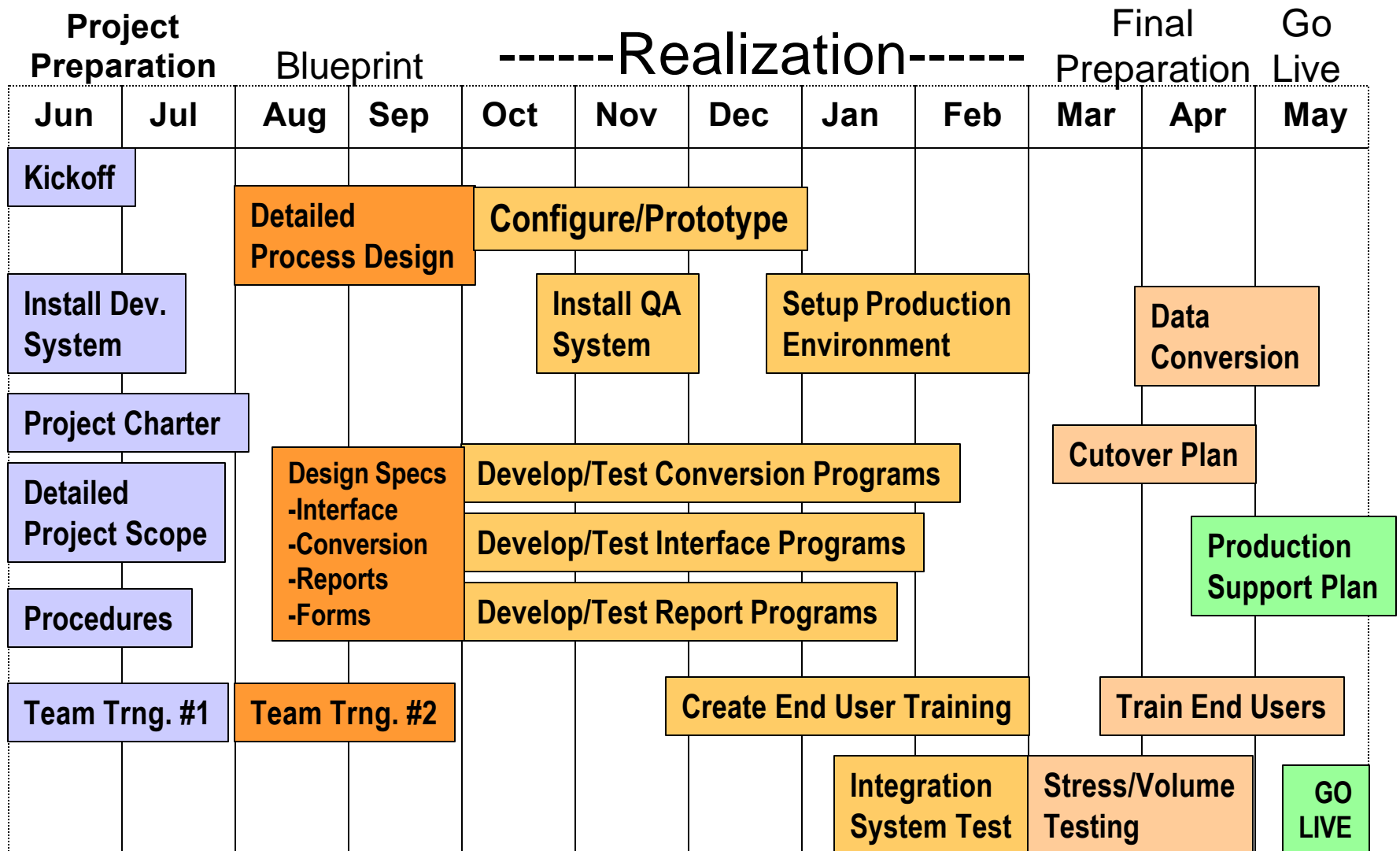
Use of Jet forms better choice (leverage from NAVAIR)

“Achieves Short and Long Term Goals” 26

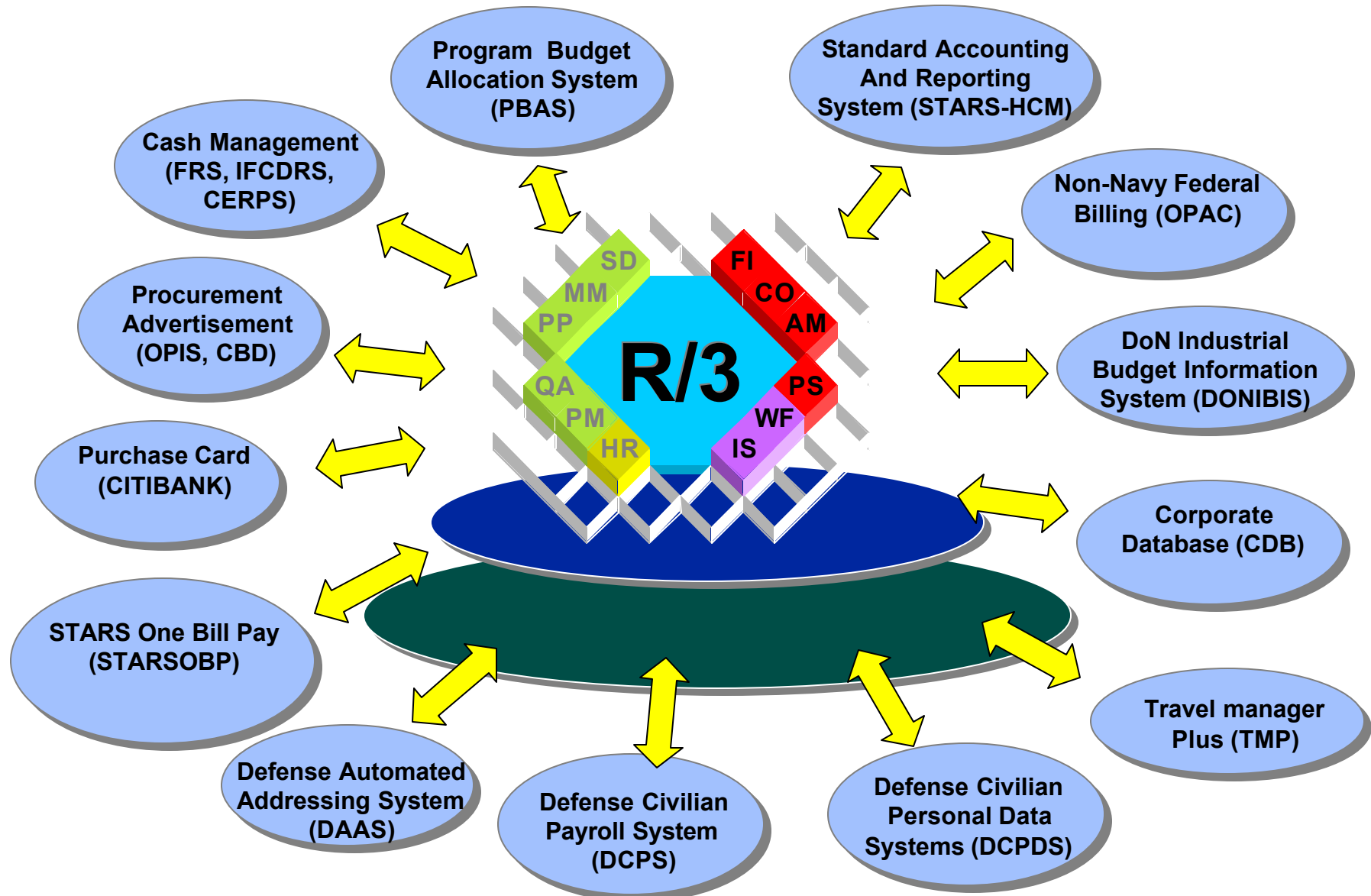
Scope Business Function to Software Mapping



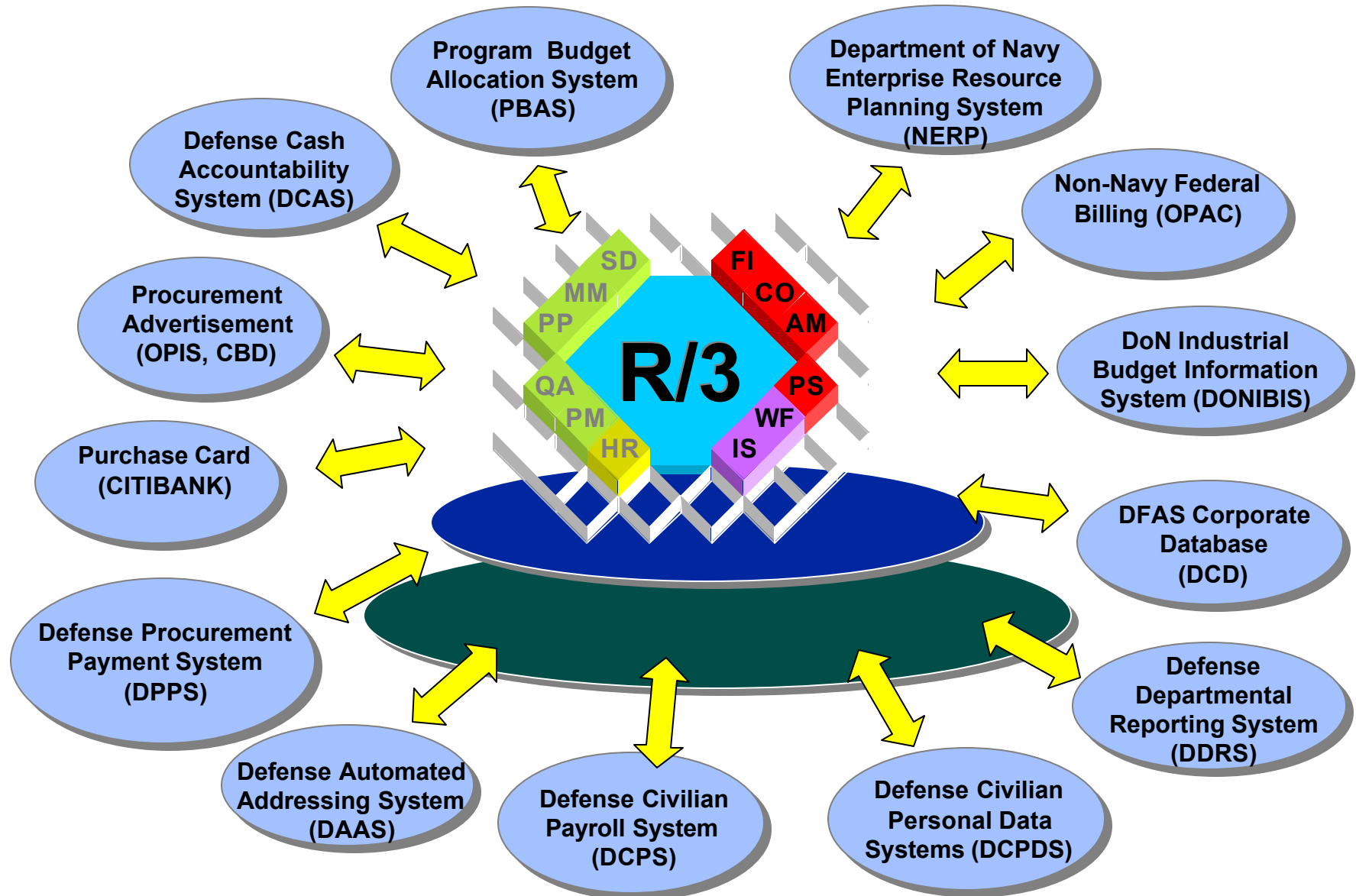
 = SAP Module  = Complementary Software Product



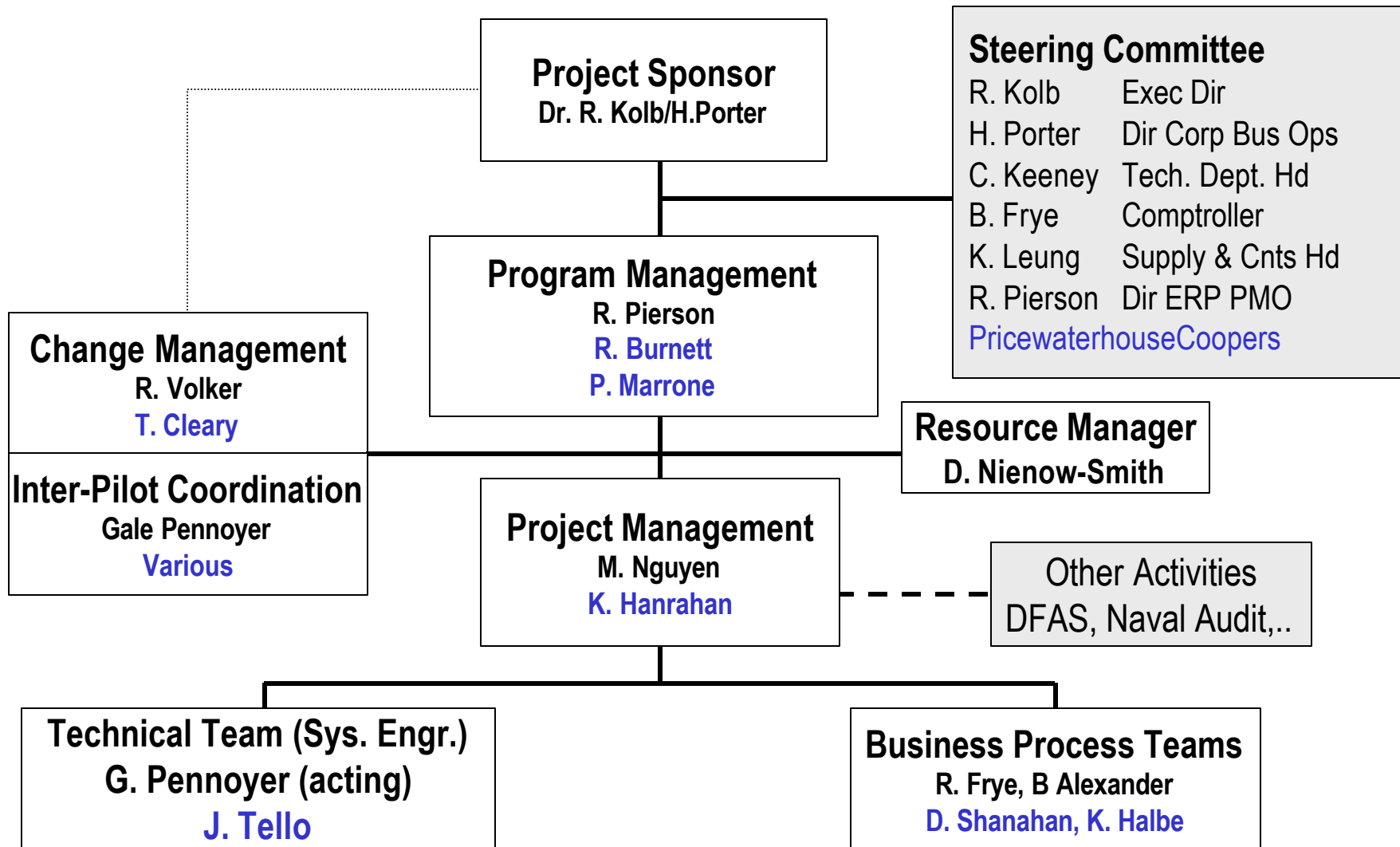
ERP External Interfaces - 12 Months



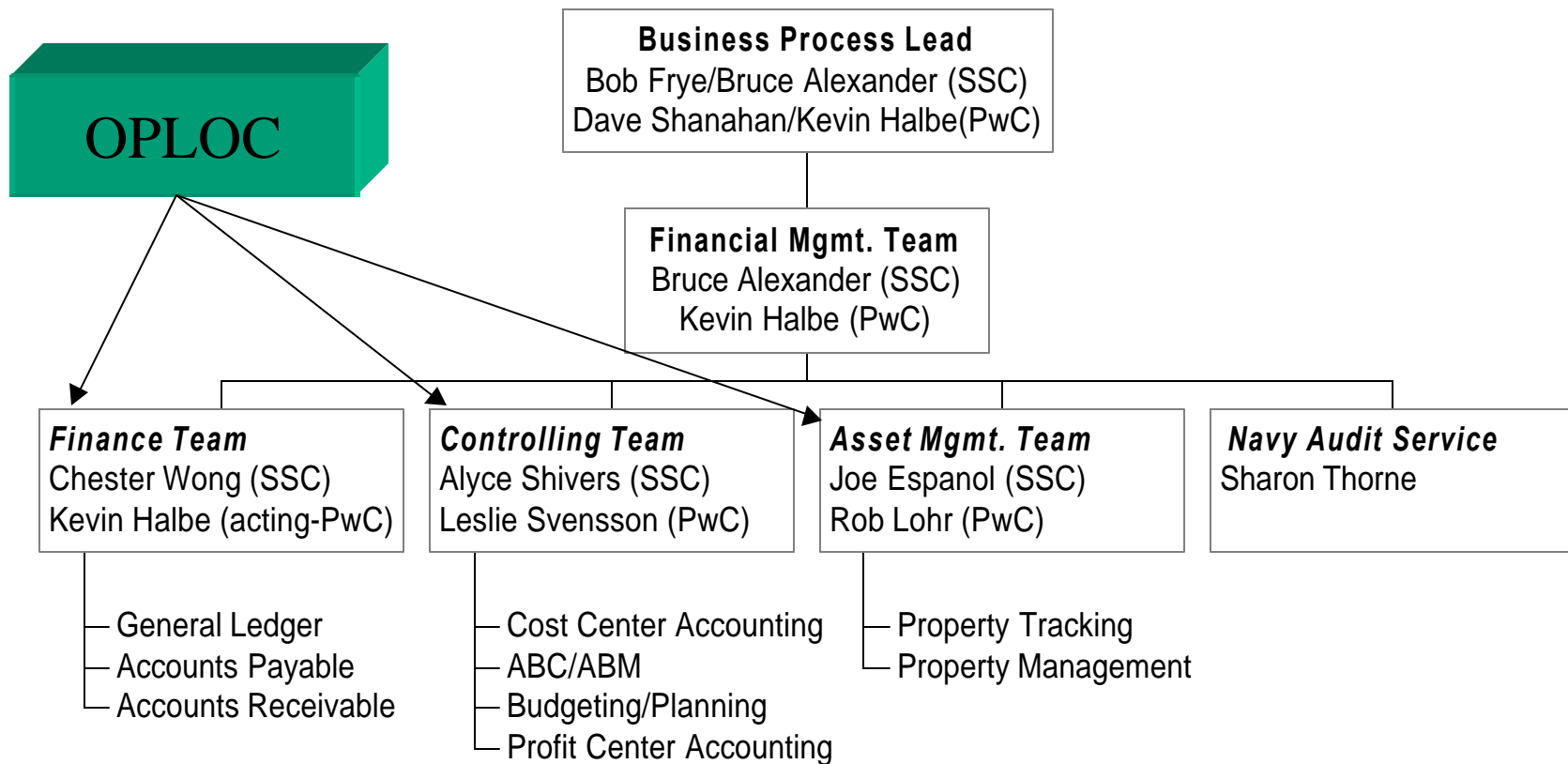
Notional ERP External Interfaces – End State



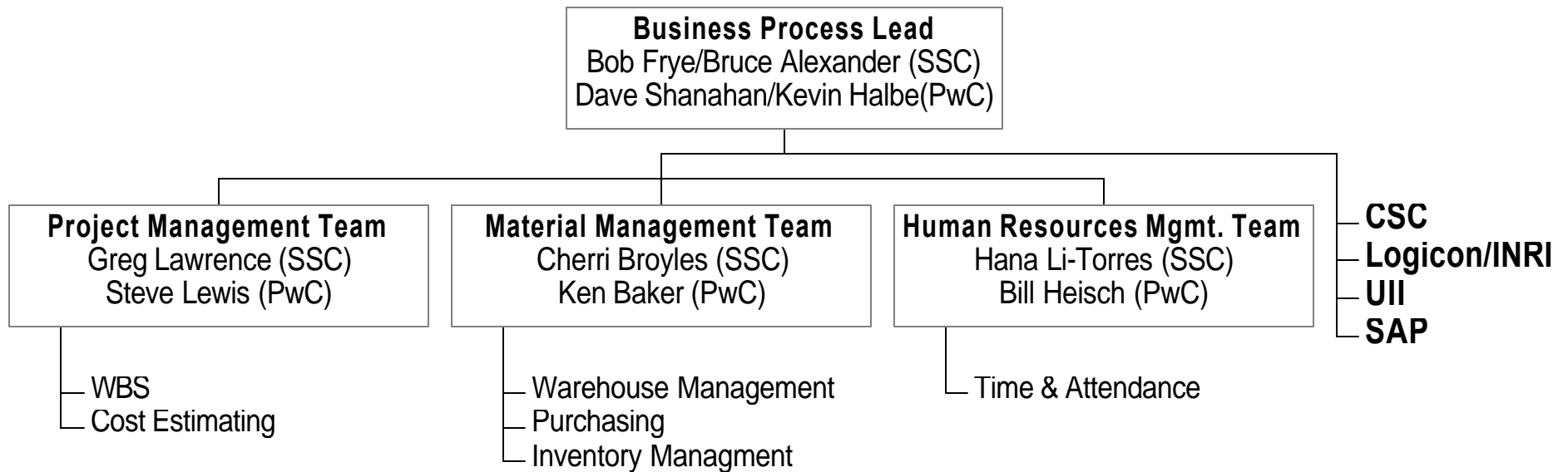
Program Organization



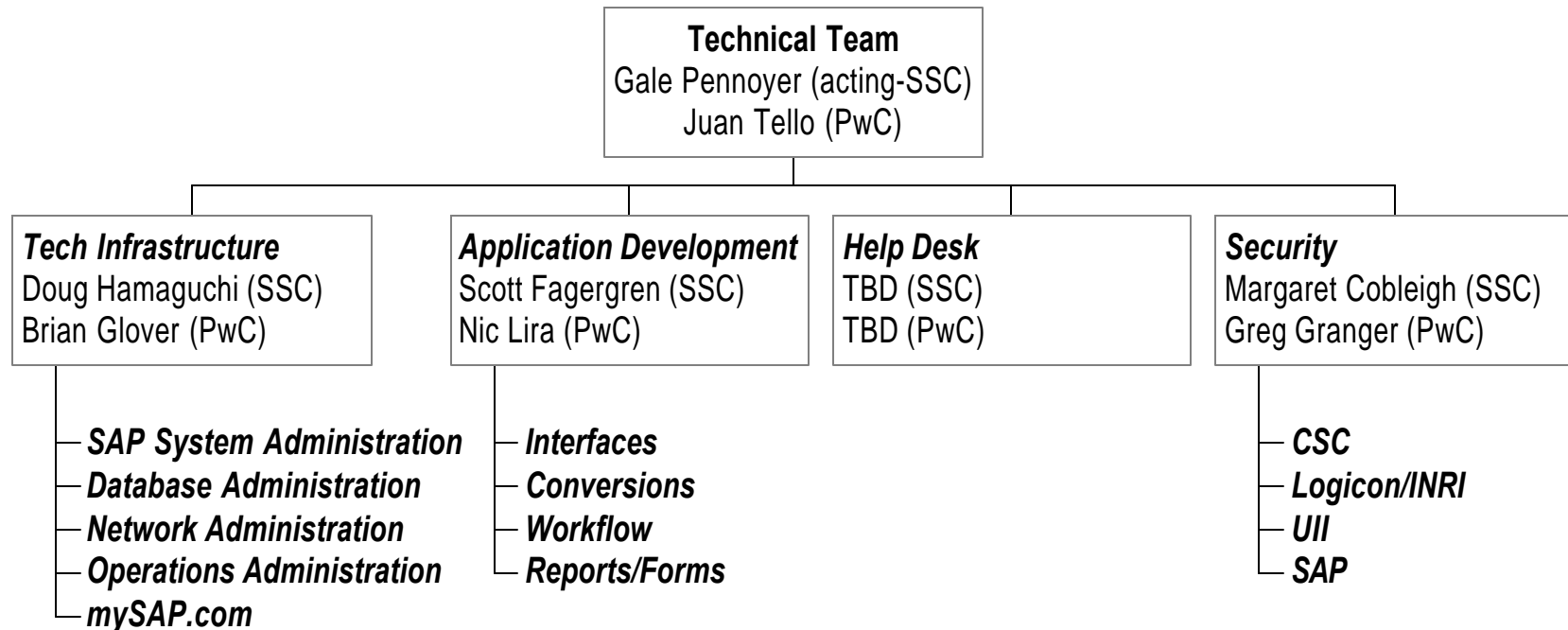
Financial Management Team



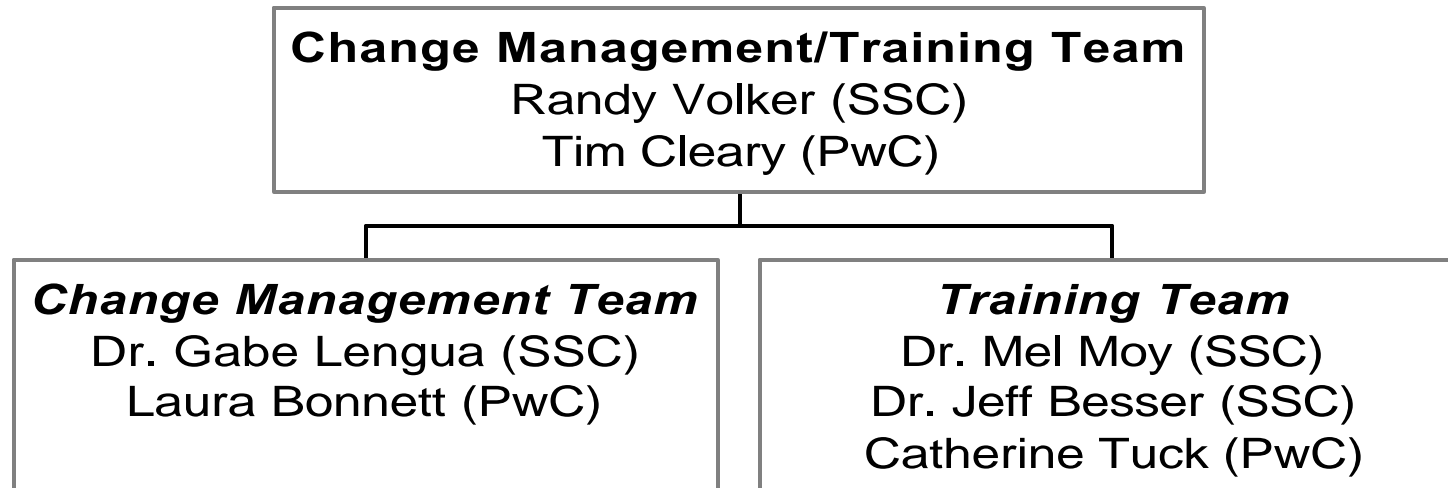
Project Team Organization



Technical Team



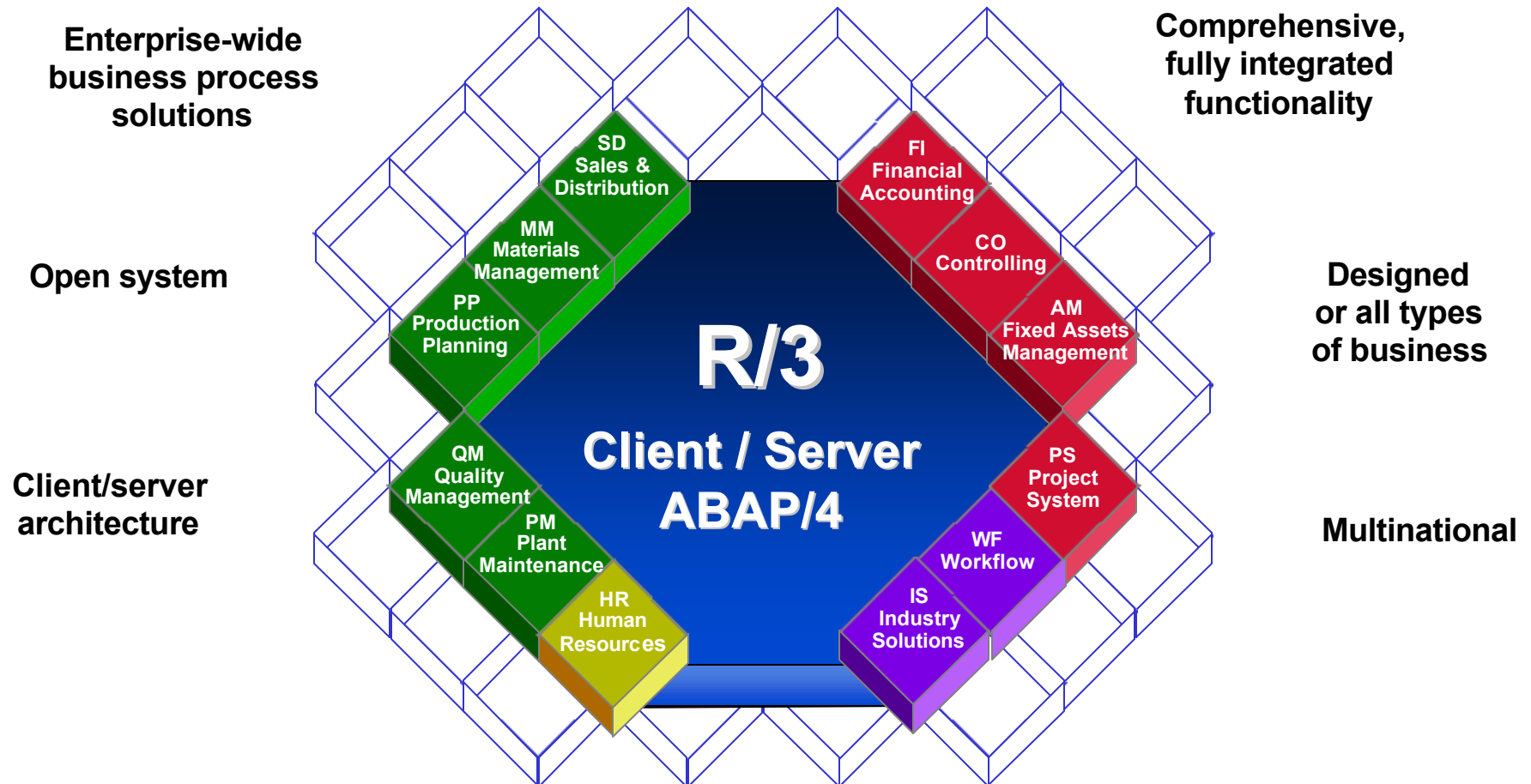
Change Management Team



- Knowledge Transfer
- Communications
- Organizational Development & Change Mgt.
- Roles Development
- Project Team
- End user (Curriculum Dev)



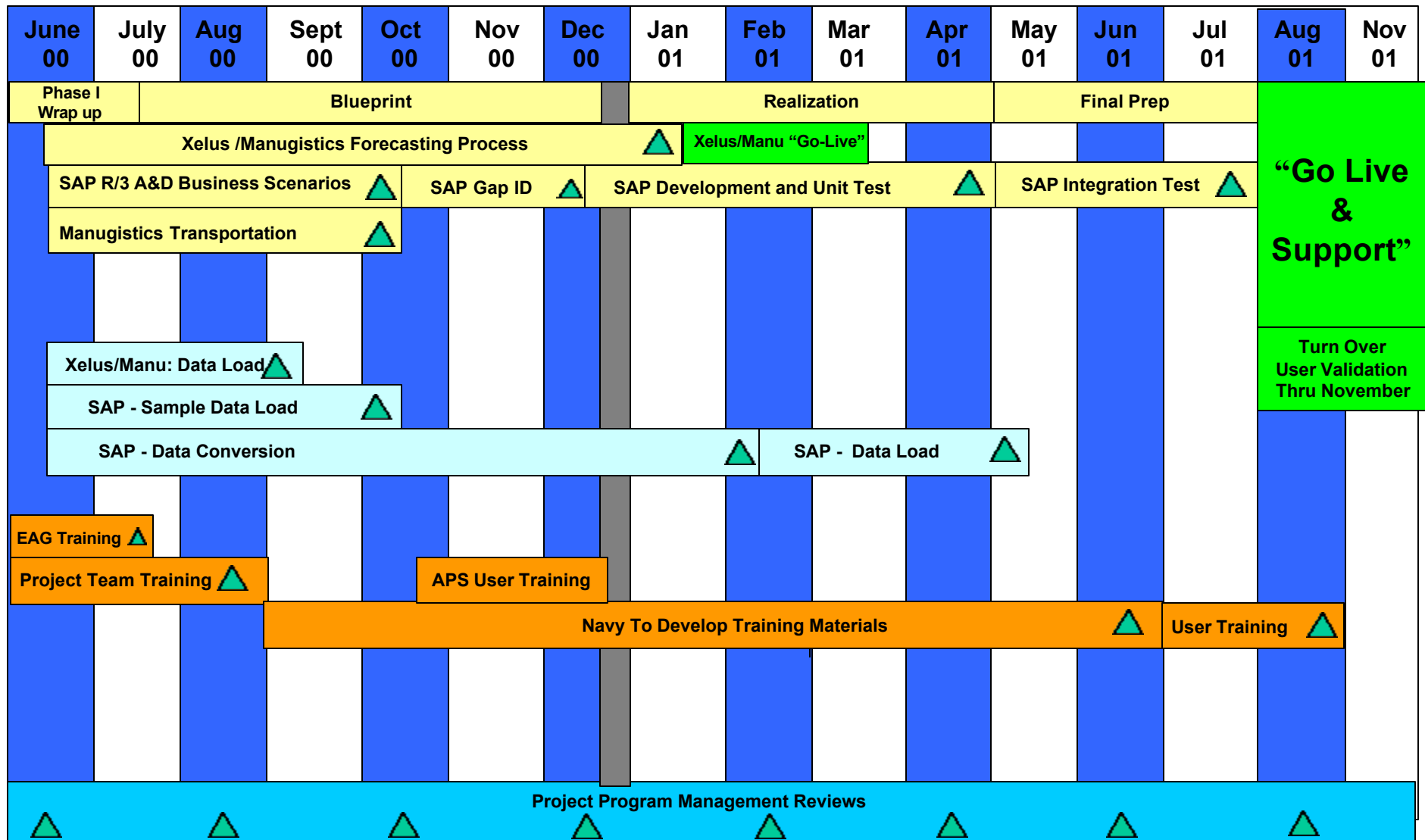
AvSCM/MM





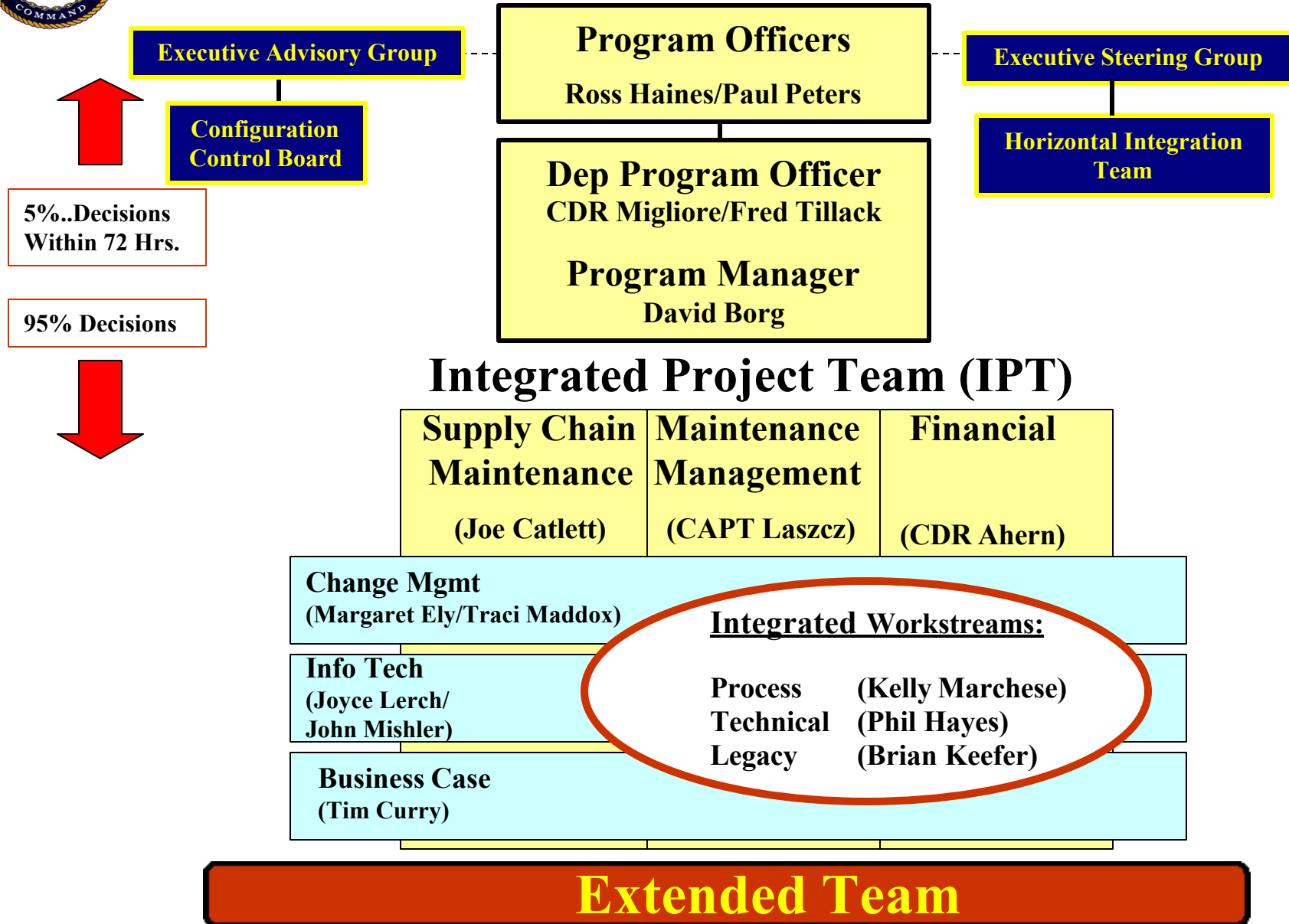
AvSCM/MM Phase II

Timeline



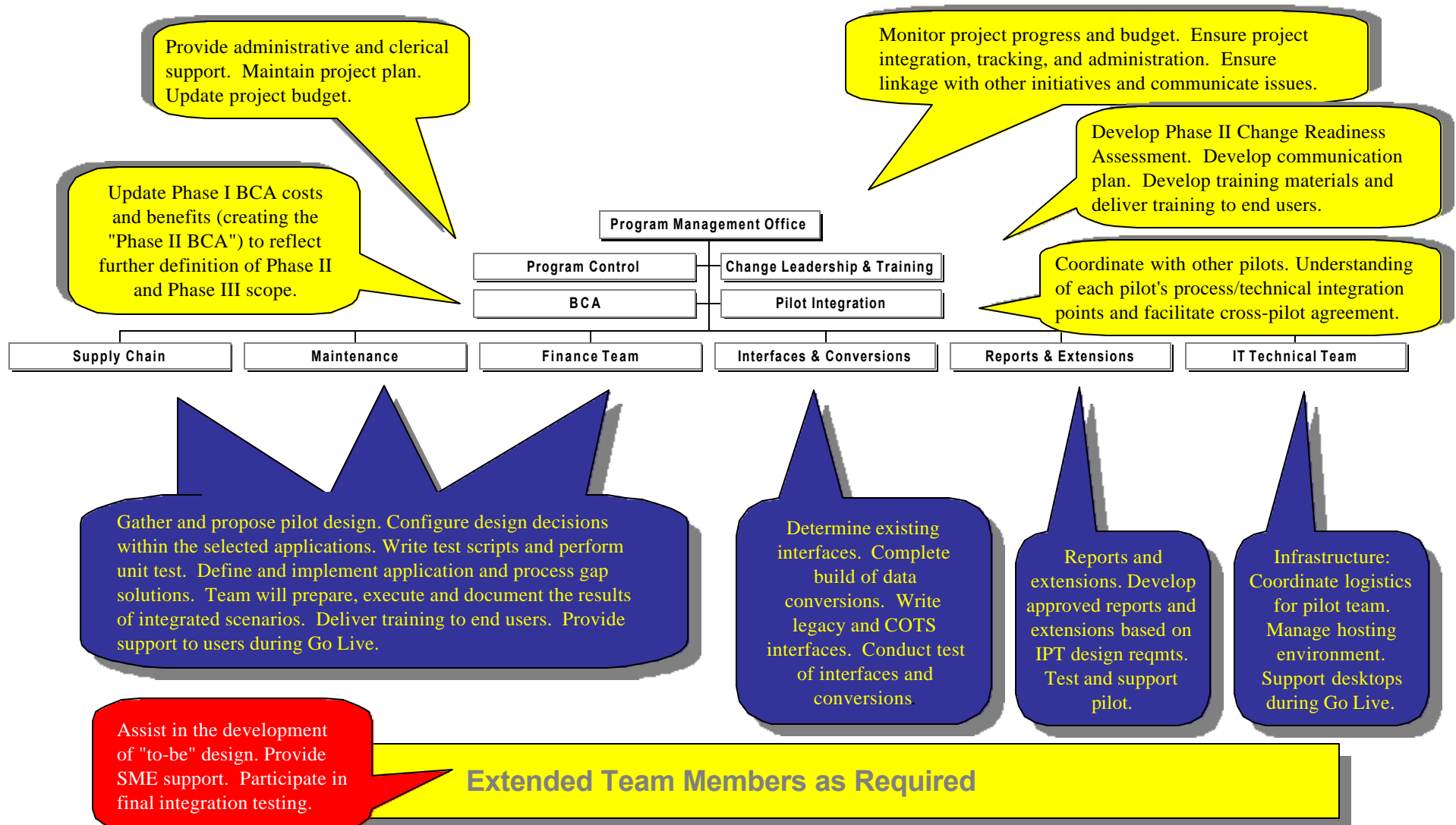


Organization





Core Team Organization



Technical Support Roles

