



CARBON CYCLING IN WETLANDS-A Research Sabbatical

by Staff, Center for Forested Wetlands Research

Wetland soils contain approximately 30 percent of the global terrestrial carbon. Hence, carbon cycling in these ecosystems has important ramifications to greenhouse gas (e.g., CO₂ and CH₄) balances. Under natural, undisturbed conditions, wetlands are generally carbon sinks. However, when they are disturbed, particularly when activities affect the hydrology, wetlands can become a net source of atmospheric carbon. Understanding the carbon balance in managed forested wetlands is essential for developing approaches to sustain carbon sequestration potential and for assessing the radiative forcing effects of the forest management practices.

Dr. Carl Trettin, Center for Forested Wetlands Research (SRS-4103), recently returned from a 6 month sabbatical to the Department of Forest Ecology, Swedish Agricultural University (SLU) in Umeå, Sweden where he focused on the issue of carbon balances in managed wetlands. A major limitation in assessing changes in soil carbon pools is long-term studies. Dr. Trettin explored the use of patterns of historical deposition of trace metals, developed by faculty at Umeå University and SLU, to serve as a baseline for reconstructing carbon pools in long-term silvicultural studies. If successful, this approach will make data available that has not been previously possible.

To assess short-term changes in carbon balances, systems for measuring carbon exchange were studied. These systems have not been widely applied to forested wetlands in the United States, and expanded use in the southeast is warranted

(continued on page 3)

MILLENNIUM ALL-CULTURES FESTIVAL BEING PLANNED

by Rod Kindlund

The committee is planning this year's event as a festival to celebrate all the diversity of our nation's cultures, as in previous years' events, but they are hoping to present a new interactive format for the day's activities.

What this means to the participants is that you'll be able to choose different presentations and forums to attend, as well as possible participation by panelists from the community and surrounding area in Western North Carolina. Since the festival will be held in late Spring, the committee also hopes to hold the bulk of the activities outdoors in designated areas. If you have suggestions for including into the festival this year, please contact one of the representatives listed above.

HILLIARD GIBBS RECEIVES AWARD

by Laura Lipe

Hilliard Gibbs, Physical Scientist at SRS-4105 in Auburn, is the recipient of the 1999 Director's Multicultural Award from the Southern Research Station. Pete Roussopoulos, Station Director, presented the award to Hilliard at the October Civil Rights Committee meeting. Hilliard was

(continued on page 5)

The Joint SRS/NFsNC Millennium All-Cultures Event

is being planned for May 9, 2000 at the North Carolina Arboretum on Brevard Road near Bent Creek Experimental Forest. Planning committee members are:

Rod Kindlund

Barry Miller

Rob Doudrick

Nelida Rodriguez

Mae Lee Hafer

Bill Carothers

Rodney Snedeker

Laura Lipe

From the Director's Desk...

With this new millennium most assuredly exponential advances in technology will occur on all fronts. We all have seen the history of the last century, beginning in the Industrial Revolution, and the effects of automation in our society. Social effects of the current

Information Revolution promise to be even more profound and exciting. It is with enthusiasm that I face the new millennium-an anticipation of all that can be.

The onset of the Information Age is already creating visible change in the world of natural resource conservation. Common household technologies for acquiring and processing vast amounts of information have created the expectation of access to current factual information about our natural resources and environment. People who want information about their

resources and a say in how natural resources are managed are looking to the Forest Service to provide immediate access to current information. The harbinger of the next era is the retooling of our Forest Inventory and Analysis (FIA) program, which now includes the plot detection monitoring component of Forest Health Monitoring (FHM). As a centerpiece for sustainability issues in the South, FIA is focusing on the measurement and analysis of key resource and environmental attributes; other SRS units are focusing on other aspects of holistic natural resource research. Together, these efforts provide a means of integrating how policies toward each resource affect entire ecosystems or sub-regions.

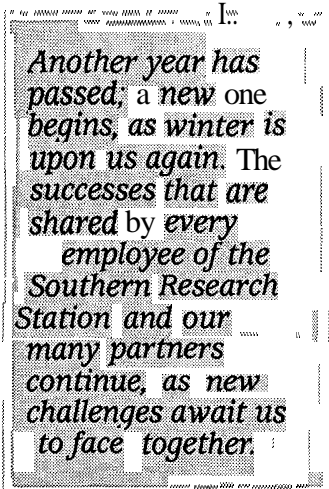
As the world moves toward community-based holistic approaches to solving environmental issues, an integrated, multiple-resource database will prove invaluable for the Station and our cooperators in State, university, industry, and environmental organizations. Attesting to the growth and support for this notion, the Southern Group of State Foresters has stepped in as a valued partner to gather

data for an annual inventory system. The new approach has forced a reengineering in software because the old systems won't work with the new data, the volume of data is higher than ever before (currently including 9 of 13 southern States), and the character of the data itself has changed. This has created a backlog of data that is now being synthesized. Because of the reengineering, we are reducing this backlog and beginning to see a switch to real-time data processing. This is all happening concurrent to updating the database itself.

The FIA data, FHM data, and other research outputs provide information to facilitate a community-based system where people who want to take part in local problem solving can do so. By bringing in our own research through subregional databases we have collected and synthesized, we can assist in framing decisions and policies on issues such as regional and local water supply, community design and development, and environmental problem solving. No less important than the collection and interpretation of the data is the quality assurances we place on the accuracy of the information. Credibility of the data is paramount to its usefulness. Quality assurance is the mainstay for FIA and all of our research contributions.

What does the future hold? Being able to provide answers about current trends and use of our natural resources is but one exciting aspect of this transformation. Future technology (not too far distant) will provide modeling capabilities that add insights on trends in environmental stresses and their likely effects. By integrating inventory and monitoring information and our research findings into resource management and working together with all our partners, we are enabling progress toward a better tomorrow.

We can all take pride in the course we have chosen, and look eagerly forward to an exciting and rewarding year 2000.

People Profile: Carmen Everton

Carmen Everton was born in Manila, Philippines and has lived in the Philippines, Japan, Austria, and 10 states in the U.S.

She began her first civilian government career in 1963 as a clerk-typist for the Office of Finance and Accounting in Fort Myer, VA that ended as a secretary in the Pacific Division of the Joint Chiefs of Staff.

In 1977, Carmen began her Forest Service career at the Missoula Ranger District on the Lo10 National Forest in Montana (Region 1) as a clerk. Later she went to the Supervisors office on the Lo10 as a personnel assistant.

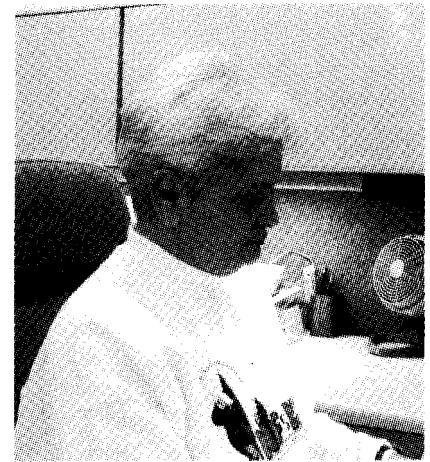
In 1987 Carmen returned to the University of Montana as a fulltime student while working 30 hours a week as a temporary in the administrative section on the Lolo. All that hard work paid off, when, in 1990, she received her degree in Business Administration with an emphasis in Human Resource Management.

Leaving the Lo10 National Forest, she took a position at the Savannah River Station, later transferring to the Southeastern Forest Experiment Station as a personnel specialist trainee.

In 1997 Carmen filled the position as Customer Service Coordinator, a position she remains enthusiastic about today. In the past, the emphasis for customer service has been internal-about improving relationships and providing training to employees. The emphasis currently has shifted to an external focus. Her position is taking on responsibilities for out-reach as part of the Forest Service Strategic Outreach Plan. The plan is specifically designed to include underserved populations in rural and urban areas in natural resource management activities as beneficiaries of the agency's programs and services accorded to all Americans. Carmen says, "reaching the under-served populations is a challenge I look forward to. I also look forward to the support and assistance of other groups at the Station as they contribute to this important, collective effort."

On a personal note, Carmen has two sons. Her older son, Michael, is an attorney with the U.S. Attorney's Office in Washington, DC and is married to Maria, who provided Carmen with a grandson, Connor, 5 months ago. Her younger son, Brian, is self-employed as a writer in Washington, DC.

She enjoys vegetable and flower gardening, reading, and working on her house.



The
Southern Aspect

Includes events and employee news from the research laboratories and administrative staffs of the Southern Research Station, which serves Alabama, Arkansas, Florida, Georgia, Kentucky, Louisiana, Mississippi, North Carolina, Tennessee, Texas, and Virginia. This newsletter is published quarterly by the USDA Forest Service, Southern Research Station, Public Affairs Office, P.O. Box 2680, 200 Weaver Boulevard, Asheville, NC 28802.

Editor: Rod Kindlund
Associate Editor: Shane Coates.

To submit newsworthy stories for future issues, please send complete articles hard copy or on diskette (MS Word or RTF) to Shane Coates at the above address, call (828) 259-0509, or email to rcoates/srs@fs.fed.us Photographs are encouraged, preferably black and white.

 Printed on
Recycled Paper

Carbon Cycling

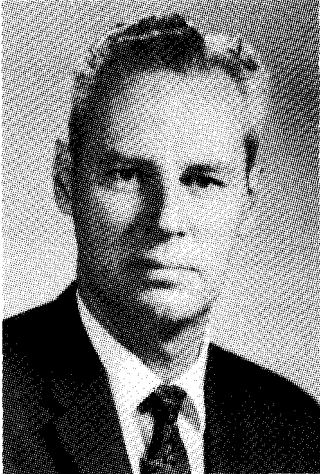
(continued from page 1)

if processes controlling carbon sequestration in managed lands is to be realized. Dr. Trettin also collaborated with colleagues at the University of Helsinki in their work on carbon balance in forested peatlands, which has shown that increases in site productivity may increase soil storage.

This work on carbon cycling in forested wetlands is relevant to the Southern Research Station Wetland, Pine Productivity, and Global Change Cross-Cutting Themes given the central role that

carbon has in sustainable productivity and global change. Results from this initiative will provide a basis for expanded research on carbon cycling, and capabilities for linking research and researchers to those in the boreal zone. A good example is the soil carbon modeling project that Dr. Trettin is conducting with funding from the Southern Global Change Program, where a network of scientists is collaborating to develop a tool that will function across the subtropical to boreal climatic gradient. A sabbatical is an important development opportunity for a scientist, and the Station is proud to have facilitated it.

Personnel Notes



Former Southern Station Director, Tom McLintock, has passed away. He was 88 years old.

Tom began his career with the Forest Service in 1939 and spent the next 33 years in research. He was first employed at the Central States Forest Experiment Station in Columbus, Ohio to research the regeneration of old oil fields and strip-mine areas. In 1944 he joined the Northeastern Forest Experiment Station at Bangor, Maine. There he was project leader for research on silviculture and

management of spruce-fir forests. From 1956-59 he was stationed at Lake City, Florida where he was leader of Lake City Research Center. Later his career would take him to Washington, D.C., then to Asheville as Director of the Southeastern Forest Experimental Station (1962-66). He finished his last six years in Washington, D.C., first as Director of Forest Protection Research and then as Director of Forest Environment Research. During his career with the Forest Service, he authored or co-authored approximately 80 publications.

In 1988 he received a citation from the USFS for "Distinguished long term leadership in research and technology transfer towards wise use of southern hardwoods" and the "North Carolina Man of the Year in Forestry" award from the North Carolina Forestry Association.

There were private graveside services in Spencer, IA. Tom's wife, Mary McLintock's address is 12 11 St. Luke Drive, Suite 3 13, Spencer, IA 51301.



Retirements

Jim Holbrook, Group Leader, Engineering, Headquarters, after 32 years service to the National Forests in North Carolina, Southeastern Forest Experiment Station, and Southern Research Station.

Bob Lee, Group Leader, Acquisition and Property, Headquarters, after 32 years service

to the National Forests in Florida, Daniel Boone National Forest (KY), Southeastern Forest Experiment Station, and Southern Research Station.

Reassignments

Bettie McGuire, Assistant Director for Administration, Headquarters, National Forests in Florida.

Janice Lowe, Secretary, AD Administration, Headquarters, to Regional Office, Atlanta, GA as the secretary for Deputy Regional Forester.



Chinese Foresters Visit SRS

by John Stanturf

Twenty research administrators from the Peoples Republic of China visited the Stoneville and Starkville labs, hosted by Jack Vozzo. The delegation was led by Dr. Wang, Deputy Director General, Seeds and Seedlings. The visit was part of a USDA-PRC exchange, arranged by Gary Man in the Washington Office. The group spent a week in the WO, two weeks at SRS, and a week on the West Coast (Portland and Seattle).

This was a diverse group, coming from locations throughout China and from different organizations. They were interested in seedling research and production, especially costs. Their visit to Stoneville was coordinated by Ted Leininger and included a tour of the Sharkey Restoration Site and stops on the Delta National Forest. John Stanturf gave an overview of research at the Center and he and Ted Leininger provided information on seedling research and production. Paul Hamel and Emile Gardiner explained the Sharkey research to the visitors. Jack Vozzo coordinated the SRS portion of their trip, and hosted the Starkville visit.

We hope that the visit leads to further collaboration with scientists in the PRC. Opportunities for long-term training at the Center were discussed.



National Science Foundation Conference

Louisiana State University will host a National Science Foundation Regional Grants Conference March 20-22, 2000, at the LSU Union in Baton Rouge, Louisiana. Workshops and presentations by NSF staff will cover: Introduction and NSF Overview; Proposal Preparation; Merit Review Process; Electronic Initiatives, Policies, and Special Issues; Grant Administration, Compliance, and Accountability; New Programs and Initiatives; Future Directions and Strategies for a National Science Policy.

NSF staff participants will include senior officials representing the range of NSF administration and management functions, and representatives of most NSF divisions. Cost is \$150; information and registration can be found online at <http://www.doce.lsu.edu/conferences/nsf/>

Forest Service Reunion Planned

The third national Forest Service reunion is being planned by the Northern Rocky Mountain Retiree Assn., Inc. (NRMRA) for September 4-8, 2000 in Missoula, Montana

A special program segment will feature, "The Way We Were", a series of skits and accounts of the personal experiences delivered by the men and women who lived the stories. In addition, a panel of retired Chief Foresters will provide their perspective on the past and future.

During the three-day celebration, the National Museum of Forest Service History will be dedicated, oral history interviews will be recorded, and tours will be taken to local sites of significant Forest Service history.

This event promotes the Forest Service's proud traditions, camaraderie, and esprit d'corps that has been typical of the Agency since its beginnings.

Registration materials are available through Forest Service retiree organizations, FS Washington Office, Regional Offices, and

Hilliard Gibbs

(continued from page 1)

recognized for his outstanding efforts which strengthen and promote civil rights and workforce diversity at the Southern Research Station. He was cited for his activities in community outreach and work with student interns, his participation in the SRS Civil Rights Team and Civil Rights Assessment Implementation Team, and his responsiveness in helping employees at the Auburn Laboratory. At the summer 1999 Station civil rights meeting, Hilliard was elected to chair the committee for the next year, a tribute to his leadership abilities and his personal commitment to civil rights.

Over the last few years, Hilliard has volunteered outreach activities at local schools in Auburn. On his own time he makes a special effort to assemble educational material for each occasion, tailored for the age of the students. By doing this, he is building the fundamental groundwork in young students on the importance of natural resources as well as employment opportunities with the Forest Service.



Research Station headquarters beginning this month. Requestors may also obtain a registration packet and information via the Internet at the National Capital

Retirees website at <http://www.fsx.org/home.htm> or at the Bitterroot RC&D website at <http://www.bitterroot.net/brc&d/retirees2000.html>. To request information via postal mail, send correspondence to: NRMRA, c/o Bitter Root RC&D, 1709 N. 1st St., Hamilton, MT 59840, Attn: Angie or telephone (406) 363-1444, ext. 5. Send email to: brrcd@bitterroot.net and insert "NRMRA Reunion 2000 Registration" in the subject line and be sure to include your name and postal mail address in the body of the message.

Upcoming Events

2000

- May 10-13 28th Annual Hardwood Symposium, Davis, WV
- Jul 9-12 Watershed 2000 Conference, Vancouver, British Columbia
- Aug 7-12 IUFRO XXI World Congress, Kuala Lumpur, Malaysia
- Aug 20-26 4th International Symposium on the Tree, Montreal Botanical Gardens, Montreal, Quebec
- Aug 27-31 American Water Resources Association International Conference on "Riparian Ecology and Management in Multi-land Use Watersheds," Portland, OR
- Sept 4-7 International Conference on Ecological Restoration 2000, Society for Ecological Restoration, Liverpool, England

Oct 29-31

Third International Oak Conference, Asheville, NC; co-sponsored by the International Oak Society and the North Carolina Arboretum (Gardiner will present invited paper)

Nov 16-20

Society of American Foresters annual meeting, Washington, DC

2001

Mar 19-22

11 th Southern Silvicultural Research Conference, Knoxville, TN



Southern Aspect represents events and employee news from the research laboratories and administrative staffs in Alabama, Arkansas, Florida, Georgia, Kentucky, Louisiana, Mississippi, North Carolina, Oklahoma, South Carolina, Tennessee, Texas, and Virginia—the States that make up the State's territory. This newsletter is published quarterly by the USDA Forest Service, Southern Research Station, Public Affairs Office, P.O. Box 2680, 200 Weaver Boulevard, Asheville, NC 28802. Editor: Rod Kindlund, Associate Editor: Tish Woods. To submit newsworthy stories for future issues, please send complete articles by hard copy or on a diskette (Word Perfect) to Tish Woods at the above address; call (828) 259-0509, or e-mail: pmwoods/rs@fs.fed.us. Photos are encouraged; send black and white prints. The USDA Policy prohibits discrimination on the basis of race, color, national origin, sex, age, religion, disability, political affiliation, and marital status. Any person who believes he or she has been discriminated against in any USDA-related activity should immediately contact the Secretary of Agriculture, Washington, DC 20250 or call (202) 720-7327 (voice), or (202) 720-1127 (TDD).

Printed on recycled paper

OFFICIAL BUSINESS
PENALTY FOR PRIVATE USE, \$300

United States
 Department of Agriculture
 Forest Service
 Southern Research Station
 P.O. Box 2680
 200 Weaver Boulevard
 Asheville, NC 28802