

YAHOO!

INTERNET LIFE

site address guide

a tear-out index of the sites in this issue

AUGUST 2001

VISIT US ONLINE
AT YI.LIFEMAG.COM
FOR A CLICKABLE
VERSION OF THE GUIDE

FEATURES»

SOUL IN THE MACHINE

pages 86-91

- **AMAZON.COM** | amazon.com
- **GOOGLE** | google.com
- **ASK JEEVES** | ask.com
- **AUTONOMY** | autonomy.com
- **OPENCOLA** | opencola.com
- **CYCORP, INC.** | cyc.com
- **MINDPIXEL DIGITAL MIND**

HEY, ASIMO, BRING ME A BEER!

pages 92-95

- **HONDA ASIMO** | world.honda.com/robot
- **DYSON** | dc06.dyson.com
- **PAPERO** | www.inco.nec.co.jp/robot/english
- **SONY AIBO** | www.us.aibo.com
- **LEGO MINDSTORMS** | mindstorms.lego.com
- **FRIENDLY ROBOTICS** | friendlyrobotics.com
- **SONY STYLE** | sonystyle.com

DEPARTMENTS»

CLICK! page 29

- **BECOMING HUMAN** | becominghuman.org

CLICK! AROUND THE NET

pages 32-34

- **NAPSTER** | napster.com
- **THEFIRSTTWINS.COM** | thefirsttwins.com
- **HOT OR NOT?** | hotornot.com
- **MSNBC** | msnbc.com
- **NAKED NEWS** | nakednews.com
- **PALMSTORIES.COM** | palmstories.com
- **PHONEROTICA** | phonerotica.com
- **REPCHECK.COM** | repcheck.com
- **SNITCHSTER.COM** | snitchster.com
- **JUPITER MEDIA METRIX** | jmm.com
- **YAHOO! CHAT** | chat.yahoo.com
- **PALMGEAR.COM** | palmgear.com
- **AMAZON.COM** | amazon.com
- **HAPPYPUPPY.COM** | happypuppy.com
- **DIDO: A FAN SITE** | geocities.com/dido_afansite
- **THE CARLSON TWINS** | clubs.y2k00.com/clubs/thecarlsontwins
- **THE WES BENTLEY WEBSITE** | clearillusions.com/wesbentley

- **MODELING PROJECT** | mindpixel.com
- **THE LOEBNER PRIZE: THE FIRST TURING TEST** | www.loebner.net/Prize/loebner-prize.html
- **JEEVES INSIGHT** | business.ask.com/products/insight.asp
- **HAN'S MORAVEC** | www.frc.ricmu.edu/~hpm
- **DOES A.L.I.C.E. REALLY LIVE HERE?**
- **A.L.I.C.E.** | alicebot.org
- **A.I. ARTIFICIAL INTELLIGENCE** | aimovie.warnerbros.com
- **BOTSPOT** | botspot.com
- **CMU ARTIFICIAL INTELLIGENCE REPOSITORY** | www.cs.cmu.edu/afs/cs.cmu.edu/project/ai-repository/ai/html/ai.html
- **KURZWEIL CYBERART TECHNOLOGIES: AARON** | www.kurzweilcyberart.com
- **HUMANOID ROBOTICS GROUP** | www.aailt.edu/projects/humanoid-robotics-group

- **IROBOT** | irobot.com
- **GENERAL ROBOTICS** | generalrobotics.com
- **ACTIVEMEDIA ROBOTICS** | amigobot.com
- **SPY-CYE** | probotics.com
- **HUSQVARNA** | www.autonover.com
- **POWERED PETS**
- **TIGER ELECTRONICS** | tigerpets.com
- **TRENDMASTERS** | trendmasters.com

I SWAPPED TILL I DROPPED

pages 96-97

- **SWITCHOUSE** | switchouse.com
- **MRSWAP.COM** | mrswap.com

COLUMNS»

- **ROBERT SCHEER: PRIVACY WATCH** page 84
- **COMPUTER PROFESSIONALS FOR SOCIAL RESPONSIBILITY: SOME FREQUENTLY ASKED QUESTIONS ABOUT DATA PRIVACY AND P3P** | www.cpsl.org/program/privacy/p3p-faq.html

CLICK! CHAT page 36

- **SYSTEM OF A DOWN** | systemofadown.com

CLICK! HOME & OFFICE page 38

- **BUILD.COM** | www.build.com
- **HANDYMAN ONLINE** | handymanonline.com
- **IMPROVENET** | improvenet.com
- **SERVICEMAGIC** | servicemagic.com
- **HIFI.COM** | hifi.com
- **BUREAU OF LABOR STATISTICS OCCUPATIONAL OUTLOOK HANDBOOK** | stats.bls.gov/iif/ohoma.htm

CLICK! INCREDIBLY USEFUL SITES pages 40-41

- **SKEETERBITES.COM** | skeeterbites.com
- **AIRHEAD: EMISSIONS CALCULATOR** | airhead.org/Calculator
- **PURPORTAL.COM** | purportal.com
- **OWNERSITE** | ownersite.com
- **THERIGHTSIZE** | therightsize.com
- **TRAFFIC-TICKET.COM** | traffic-ticket.com

16019

More of what you're hungry for.

m

er.com

ITION i

dex.asp

ll.com

ypayne

s.com

s.htm

FAST RAM BOOSTS ATHLON PCs

COMPUTER SHOPPER

July 2001
U.S. \$3.99

XP
PREVIEW

SMART SHOPPING TIPS

33 WAYS TO FIND GREAT DEALS!

▶ SAVE ON
Hard Disks

RAM

CD-RW Drives

Monitors

Motherboards

Graphics Cards

New Low-Cost PDAs

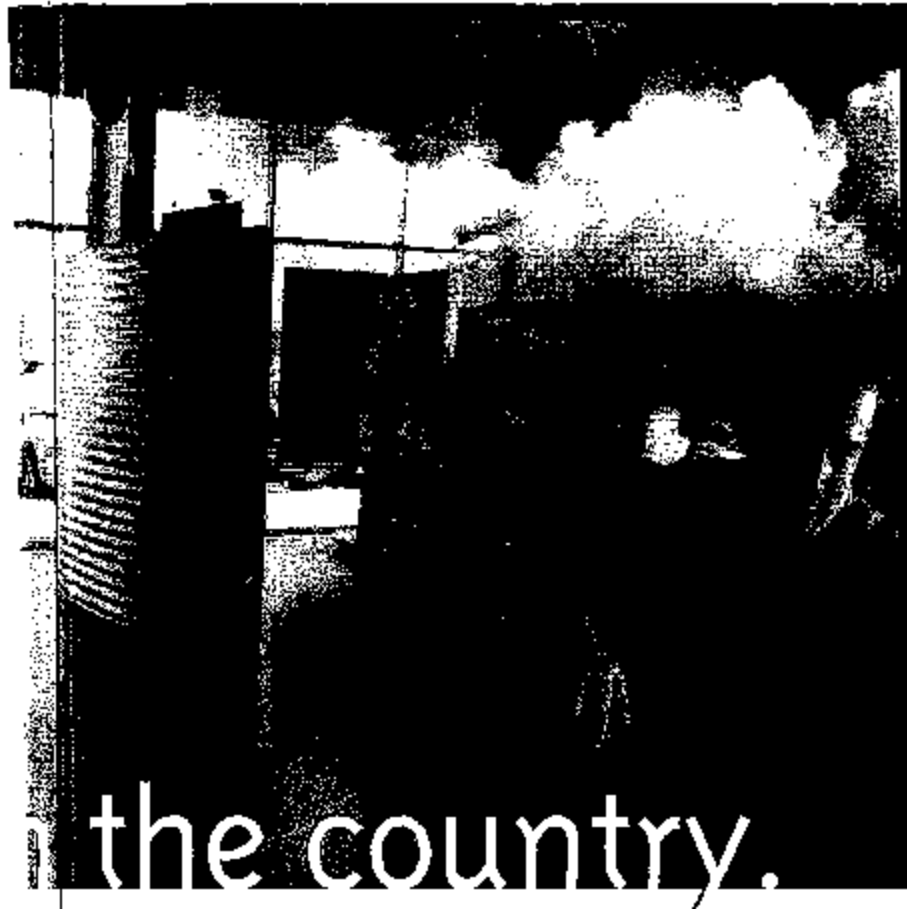
Pick the Perfect Printer

Simple
CD-RW

DISPLAY UNTIL JULY 17, 2001



Free



Gateway Performance™ 3400

- Intel® Pentium® 4 Processor 1.40GHz (3400MHz)
- 128MB RDRAM PC800 Memory
- EV700 17" Monitor (15.9" Viewable)
- 30GB Hard Drive
- 32MB NVIDIA™ Riva TNT2 M64 Graphics
- 20x min/48x max CD-ROM Drive
- SoundBlaster® 128D AudioPCI™ and CCS300 Speakers
- 56K Modem
- Microsoft Works Suite 2001 Software
- 1-Year America Online® Internet access (new members only)*
- 3-Year Limited Warranty*

\$1299

Solo® 5300CS

- 12.1" SVGA TFT Color Display
- Intel Pentium III Processor 700MHz
- 128MB SDRAM (Expandable to 512MB)
- 2X AGP 8MB 53 Savage IX 3D Video
- Modular 24X max/10X min CD-ROM Drive
- Modular 3.5" Diskette Drive
- 10GB Hard Drive
- Integrated V.90 56K Modem
- Microsoft Works Suite 2001 Software
- 1-Year America Online Internet access (new members only)*
- 1-Year Limited Warranty*

\$1399

Gateway Video:Ware™ Package

With Gateway's Video:Ware packages, you'll find everything you need to shoot video and turn your PC into a video editing station. The perfect place to start is our Basic Digital Video package. With it, you can send video clips and photos by e-mail, create movies and hold your own video conference calls using the Intel PC Camera. All for **\$150!** It includes a Getting Started guide, the Intel PC Camera Pro Pack and one half-day instructor-led training course, "Using Your PC Camera to Capture Real-Time Images."



Gateway Music:Ware™ Package

Learn how to create your own music CDs and turn your PC into a jukebox with one of three Gateway Music:Ware packages. The Digital Audio Creator Pack is just **\$200** and includes such features as an MP3 player that allows you to capture, collect and organize your favorite tunes; MusicMatch® Jukebox™ Plus software to record MP3s, listen to radio stations and create custom CDs; and a training program from which you'll learn everything you need to know.*



Gateway™ PCs use genuine Microsoft® Windows®
<http://www.microsoft.com/piracy/howtotell>

gateway.com

800.424.1416



3. Visit gateway.com, call 1-800-846-2000 or write to Gateway Terms & Conditions, P.O. Box 1651, North Sioux City, SD 57049-1951 for

P16035



sknot your budget.

Gateway
Network Training

PC Support and Network Training

Core skills training provides a foundation for a stable networking environment.

Networking Solutions

Need help installing a new network or updating an existing one? Gateway can help. Because everyone's needs are different, a Gateway certified engineer will visit your site for free, assess your business needs and develop a solution with everything you need, nothing you don't. For everything from consulting and installation services to ongoing support, Gateway™ Networking Solutions is the comprehensive source for all your technology needs.



Servers

7450r Ultra-Thin 1U Rack Server

Maximize space without sacrificing performance. The 7450r features Intel Pentium III processors, 4GB RAM and three hot-swap SCSI drives.

- Intel Pentium III Processor 933MHz with 256K L2 Cache (supports up to 2 processors)
- 12GB PCI33 ECC SDRAM (expandable to 4GB)
- 5 Drive Bays total (3 Hot-Plug SCSI Drive Bays)
- 9GB SCSI 10K SCA Drive
- 2 Full-length 64-bit PCI slots
- FCC Class A Emission¹

\$1999*

Wireless Networking

Wireless Network RG-1000 Access Point

The RG-1000 is the hub of your wireless network, connecting users from anywhere in the office.

- Ideal for small office/home office applications
- Built in radio-card (supports 20-30 users)
- Built in 56K V.90 modem and support for cable, ISDN or xDSL modems
- Encryption to protect your data
- One ISP account used by multiple clients simultaneously
- Supports DHCP, PPP and NAT

\$299*

Network Hardware

3Com OfficeConnect

Organize and connect your office network with products designed for maximum efficiency and reliability.

3Com® Networking Products

- Broadest range of products spanning local area networking, internet, and remote access; designed specifically for small to medium-size businesses
- Compact, stackable, clipable and expandable networking systems
- Reliable, easy-to-use hubs, switches, modems, firewalls and remote access

Starting at \$75*

SEE US AT CES

Gateway™ PCs use genuine Windows® Operating Systems
<http://www.microsoft.com/piracy/howtotell>



P16487



Ready to rock.

And all that jazz.

Thinking about piecing together the ultimate music system? Think again. The Gateway Select™ 1400CL with the Gateway Music:Ware™ CD Creator package comes equipped with everything you need to customize your own CDs. At a great value. So, you won't get to pore over classified-size product listings. Or assemble motherboards. Or burn extra time. But you'd rather be burning CDs anyway, right? Hey, simple can be smart, too.

Come see the Gateway country difference.

Gateway Select™ 1400CL

- AMD Athlon™ Processor 1400MHz
- 128MB RDRAM
- EV700 17" Monitor (15.9" viewable)
- 40GB Ultra ATA Hard Drive
- 64MB DDR ATI™ Radeon™ VE w/DVI and TV Out
- Sound Blaster® Live!™ Value Card w/Digital Audio Output
- Home Networking/56K Modem Combo Card
- Gateway Music:Ware™ CD Creator Pack: Recordable/Rewritable CD-ROM Drive, Boston Acoustics® BA735™ Digital Speakers w/Subwoofer, CD Stomper™ Pro CD Labeler, 16X CD-R 50 Pack Spindle, MusicMatch® Jukebox™ Plus — the award-winning all-in-one digital audio jukebox, Training Course, "Using Your PC to Explore Digital Music Your Way™", Getting Started Guide
- Microsoft® Works Suite 2001 Software*
- 1-Year America Online® internet access* (new members only)
- 3-Year Limited Warranty*



\$1399

Gateway™ PCs use genuine Windows® Operating Systems
<http://www.microsoft.com/piracy/howtotell>

gateway.com
800.555.2081

Come into a Gateway Country® store



Gateway

"You've got a friend in the business."®

an a niche in the...
Now that we've...
online auctions...
eBay, we can see...
disadvantages...
main advantage...
the auction mecha...
ions capability...
when you have...
n only a few peo...
only way to sell...
f there is one. In...
doesn't exist or is...
The Internet, how...
le buyers for any...
son the auction...
the beginning...
pricing is unk...
unknown, hence...
well when you...
e what it's wort...
t to sell it. But on...
with a price floo...

he disadvantages...
chanism as the...
itself. Because...
people are buyin...
mselves in way...
ec fraud is now...
growing crimes...
goods, inferior...
and misrepres...
hen there are th...
o don't pay for...
ceive.

the haggling...
rich the auction...
ed that's the prob...
its roots a notio...
buyer and seller...
win some game...
is trying to ge...
money while the...
the best deal. Th...
ow your oppon...
a good deal or...
ther person's...
ssion is always...
h a system can't...
urdensome wa...

...self auctions...
he potential to...
business model...
ing to an...
...
... data transfer rate dependent upon variables including particular modems with which you are communicating, telephone lines, communications software and communications protocols.
... courses subject to change without notice. Prices include any applicable sales tax. Gateway training is not offered as vocational or job training. Passes are not transferable. No refunds are...
... Upgrade Passes. Training available at participating Gateway Country locations. Courses listed may not be available in all locations. 3. Packet Slides for Microsoft® Windows® CE requires...
... CE 2.0 or later. Hardware available separately. 4. TO AVOID BEING CHARGED A MONTHLY FEE, CANCEL BEFORE 1 YEAR PERIOD ENDS. 1 Year period begins 30 days from receipt of system...
... surcharges even during promotional period for premium services, or long distance charges on your phone bill, depending on location and calling plan. Communication surcharges may also...
... some access numbers and in AK, New U.S. members only, 16 and over. Major credit card or checking account required and will be provided to AOL at registration. Use may be limited, especially...

P16488



You take the picture.

We take care of the rest.

Sure, we're probably making digital photography too easy for you. But this time, the simplest answer is definitely the best. Our Gateway Performance™ 1300CS with the Gateway Photo:Ware™ *Picture This!* Photo Solution has capabilities and savings built in. And a powerful Intel® Pentium® 4 processor to keep things clickin'. So shop the easy way for once. Then tell everybody you pieced the deal together yourself.

Come see the Gateway country difference.

Gateway Performance 1300CS

- Intel® Pentium® 4 Processor 1.30GHz (1300 MHz)
- 128MB EDRAM
- EV700 17" Monitor (15.9" viewable)
- 20GB Hard Drive
- 32MB NV2DIA™ Riva TNT2™ M64 Graphics Accelerator
- Sound Blaster® Audio PCI™ 128D Card
- 56K Modem
- Gateway Photo:Ware™ *Picture This!* Photo Solution; Fuji® FinePix™ 2300 Digital Camera, MCI® PhotoSuite 4 Platinum Edition Software, Kodak Premium Picture Paper, Training Course "Using Your PC to Explore Digital Photography Your Way" Second Edition; Getting Started Guide
- Microsoft® Works Suite 2001 Software*
- 1-Year America Online® Internet access* (new members only)
- 3-Year Limited Warranty*



\$1549

Gateway™ PCs use genuine Windows® Operating Systems
<http://www.microsoft.com/piracy/howtotell>

gateway.com
888.478.1381
Come into a Gateway Country® store



EDITORS' RATING

RATED 1 TO 5

RELIABILITY
PERFORMANCE
FEATURES
GRAPHICS
VALUE
SUPPORT
DESIGN
EASE OF USE
FEATURES
PERFORMANCE
VALUE
SUPPORT
DESIGN

Good built-in Flash
tor; excellent perfo
ring feature; unique
ents

Drawing tools lock
pace Web graphics
ary interface; no
ation tools

RELIST PRICES
28 (UPGRADE);
COMPETITIVE OFFER

REQUIRES: 70MB free
space; printer; Super
Script 2 or later; Win
dows 98; processor of 400
MHz; RAM; Windows 98
or NT 4.0; Mac OS 8.0
or 9.0; Mac OS 8.0
or 9.0

COMPANY: Gateway
in Fremont, CA
408-326-2128, 415-353-
3452
www.gateway.com

20 Price
3 4 5 2

For real-time pricing
www.gateway.com and visit

at this \$129
the market for
rogram, Corel
be a better
an *Glenn Ste*

EDITORS' RATING

RATED 1 TO 5

EASE OF USE
FEATURES
PERFORMANCE
VALUE
SUPPORT
DESIGN

Support for 21-M
2D DirectDraw
Acoustic Mimic built-in
burning and ripping

1 limited to two
two expensive for
nonprofessionals

DIRECT PRICING
\$399.95 (PACK)
\$149.95 (DOWN)

REQUIRES: 20MB
processor; 32MB RAM
hard drive space; Win
98, or 2000; recordable
drive for CD burning

COMPANY: Gateway
Madison, WI
800-577-REMI, 608-271-
www.gateway.com

20 Price
3 4 5 0

For real-time pricing
www.gateway.com and visit

with an excellent
ects. But if you
deeply involved
want to give this

*Data transfer rate dependent upon variables including particular modems with which you are communicating, telephone lines, communications software and communications protocols.
and courses subject to change without notice. Prices exclude any applicable sales tax. Gateway training is not offered as vocational or job training. Passes are not transferable. No refunds are
of Upgrade Passes. Training available at participating Gateway Country locations. Courses listed may not be available in all locations. 3. Pocket Streets for Microsoft® Windows® CE requires
CE 2.0 or later. Mac OS software available separately. 4. TO AVOID BEING CHARGED A MONTHLY FEE, CANCEL BEFORE 1 YEAR PERIOD ENDS. 1 Year period begins 30 days from receipt of system.
Our surcharges even during promotional period for premium services, or long distance charges on your phone bill, depending on location and calling plan. Communication surcharges may also
include access numbers and in AK, New U.S. members only, 18 and over. Major credit card or checking account required and will be provided to AOL at registration. Use may be limited, especially
in usage. For details and access numbers, call 1-800-848-2000. 5. Visit gateway.com, call 1-800-848-2000 or write to Gateway Terms & Conditions, P.O. Box 1951, North Sioux City, SD 57049-
1951. ©2001 Gateway Inc. All rights reserved. Gateway and Gateway Country are registered trademarks of Gateway Inc. All other trademarks are the property of their respective owners.

P16490



Push 'em to the limit.

If you think you're ready.

Sure, the average person could operate this thing. But he wouldn't know what to do with it. Powered by the super-fast AMD Athlon™ processor, the Gateway Select™ 1200CS reaches blinding speeds at a reasonable price. Speeds that fly beyond the reach of your average user. Gateway Select PCs with the AMD Athlon processor are designed for people in the know. Like you.

Gateway Select™ 1200CS

- AMD Athlon™ Processor 1200MHz
- 128MB SDRAM
- EV190 17" Color Monitor (15.9" viewable)
- 20GB Ultra ATA Hard Drive
- 3D Graphics Accelerator
- Recordable/Rewritable CD-ROM Drive
- 10/100 Network Card
- 3.5" Diskette Drive
- Stereo Audio Sound
- GCS300 Speakers
- 56K Modem
- Microsoft® Works Suite 2001 Software*
- 1-Year America Online™ Internet access† (new members only)
- 3-Year Limited Warranty*



\$1099

Come see the Gateway country difference.

Gateway™ PCs use genuine Windows® Operating Systems
<http://www.microsoft.com/piracy/howtotell>

gateway.com
888.492.5727

Come into a Gateway Country® store



Gateway

"You've got a friend in the business.®"

*Transfer rate dependent upon variables including particular modem's with which you are communicating, telephone lines, communications software and communications protocols. †Requires Microsoft Windows® CE requires Windows CE 2.0 or later. Hardware available separately. 3. TO AVOID BEING CHARGED A MONTHLY FEE, CANCEL BEFORE 1 YEAR PERIOD ENDS. Begins 30 days from receipt of system. You may incur surcharges even during promotional period for premium services, or long distance charges on your phone bill, depending on location. 4. Communications surcharges may also apply with some access numbers and in AK, HI, and other. Major credit card on checking account required and will be used for registration. Use may be limited, especially during peak usage. For details and access numbers, call 1-800-846-2000. 4. Visit gateway.com, call 1-800-846-2000 or write to Gateway, Inc., 1500 North Sioux City, SD 57104-1981 for a free copy of applicable limited warranty and service agreements. Offer subject to availability.

DVD-R(A) offerings include DVD-R(A), as well as DVD-R(A)05 compatible to DVD-R(G), CD-RW discs. The available in an OEM initially support as been integrated using workstation. Apple Power Mac G MovieStudio Premier average configuration. Pioneer plans to CR-like Pro DVD fail that will sell for...
ICE IS NOT ENOUGH...
rum's official sequ...
rewritable format is...
Like DVD-RAM or...
ord a disc multiple...
ort data-oriented fr...
own access, defect r...
constant angular vel...
ontrol. Although it...
ne recording and d...
's greatest potential...
n for multimedia ex...
ause it's essentially...
s of DVD-R, it allow...
debuggible test dis...
performance and fu...
al DVD-R master. It...
r distributing and s...
edia content such as...
d home movies.
DVD-RW drives app...

P16491

... | Refere...

) Smith says he
action that come
ement, but still
"awesome." And
impressed with
ad online. "The
supersedes my
e says.

ograms can vary
red and unaccredi
does for ground-
-edited Global MB
www.duke.edu), in
\$95,000, according
ter's and doctoral
ed but California
ia Coast Universi
\$4,975. At the
Online, it costs \$
duate studies.

while, pays \$165 p
dired North Cent
definitely happy w
ral degree | prog
an \$10,000, inclu
et servicc," she sa

ducation will neve
rooms and campu
into a real, practi
professionals. Sta
ncontinue to stay at
g anything from a
o a master's degre
ople can attend c
otel rooms. And
a students across

allband technolog
: online-learning e
audio and video, s
dents can wat
lectures instea
just reading th
But even with
basic dial-up
nection and
ordinary Web
browser, the
distance-learn
model works
works well.
Nancy Gold
who's pursue
master's deg
Jones intern
University



Built for speed.

Strap yourself in.

If you can keep up with one of these, you might need a cooling fan for your keyboard. Powered by the incredible Intel® Pentium® 4 processor, Gateway Performance™ PCs are on the cutting edge of technological evolution, giving you the power* to do more with your PC than ever before. And do it at speeds approaching the edge of comprehension. Just be careful keeping up with it. We won't be responsible for burnt fingers.

Come see the Gateway country difference.

Gateway Performance™ 1700CX

- Intel® Pentium® 4 Processor 1.70GHz (1700MHz)
- 128MB RDRAM PC800 Memory
- EV910 19" Color Monitor (18" viewable)
- 64MB DDR ATI® Radeon™ VE W/DVI and TV Out
- 50GB Ultra ATA/100 7200RPM Hard Drive
- Two Optical Drives:
 - 16X DVD-ROM Drive w/Rand McNally Explore America on DVD
 - Recordable/Rewritable CD-ROM Drive
- 1394 IEEE PCI™ Card
- 10/100 Network Card
- 3.5" Diskette Drive
- Sound Blaster® Live!™ Value Card w/Digital Audio Output
- Boston Acoustics® BA735™ Digital Speakers w/Subwoofer
- 56K Modem
- Microsoft® Works Suite 2001 Software*
- 1-Year America Online® Internet access† (new members only)
- 3-Year Limited Warranty*



\$1999

Gateway™ PCs use genuine Windows® Operating Systems
<http://www.microsoft.com/piracy/howtotell>

gateway.com
888.509.0669

Come into a Gateway Country® store



"You've got a friend in the business.™"

* Transfer rate dependent upon variables including particular modems with which you are communicating, telephone lines, communications software and communications protocols.
 † For Microsoft® Windows® CE requires Windows CE 2.0 or later. Hardware available separately. 2. TO AVOID BEING CHARGED A MONTHLY FEE, CANCEL BEFORE 1 YEAR PERIOD ENDS.
 ‡ Within 30 days from receipt of system. You may incur surcharges even during promotional period for premium services, or long distance charges on your phone bill, depending on location.
 § Communication surcharges may also apply with some access numbers and in AK, New U.S. members only. FR and over. Major credit card or checking account required and will be
 used for registration. Use may be limited, especially during peak usage. For details and access numbers, call 1-800-846-2000. 4. Visit gateway.com, call 1-800-846-2000 or write to
 Gateway, 2000 Gateway Blvd., North York, NY 11761-1000.

p1601

Family

AUGUST 2007

Surviving In Style

Ways the
Web Can Help
You **Save**
Time and
Money

We Grade
**8 Leading
Parenting Sites**

**DIGITAL CAMERAS
FOR UNDER \$500**

www.familypc.com



FamilyPC

JULY 2001

THE Good Life

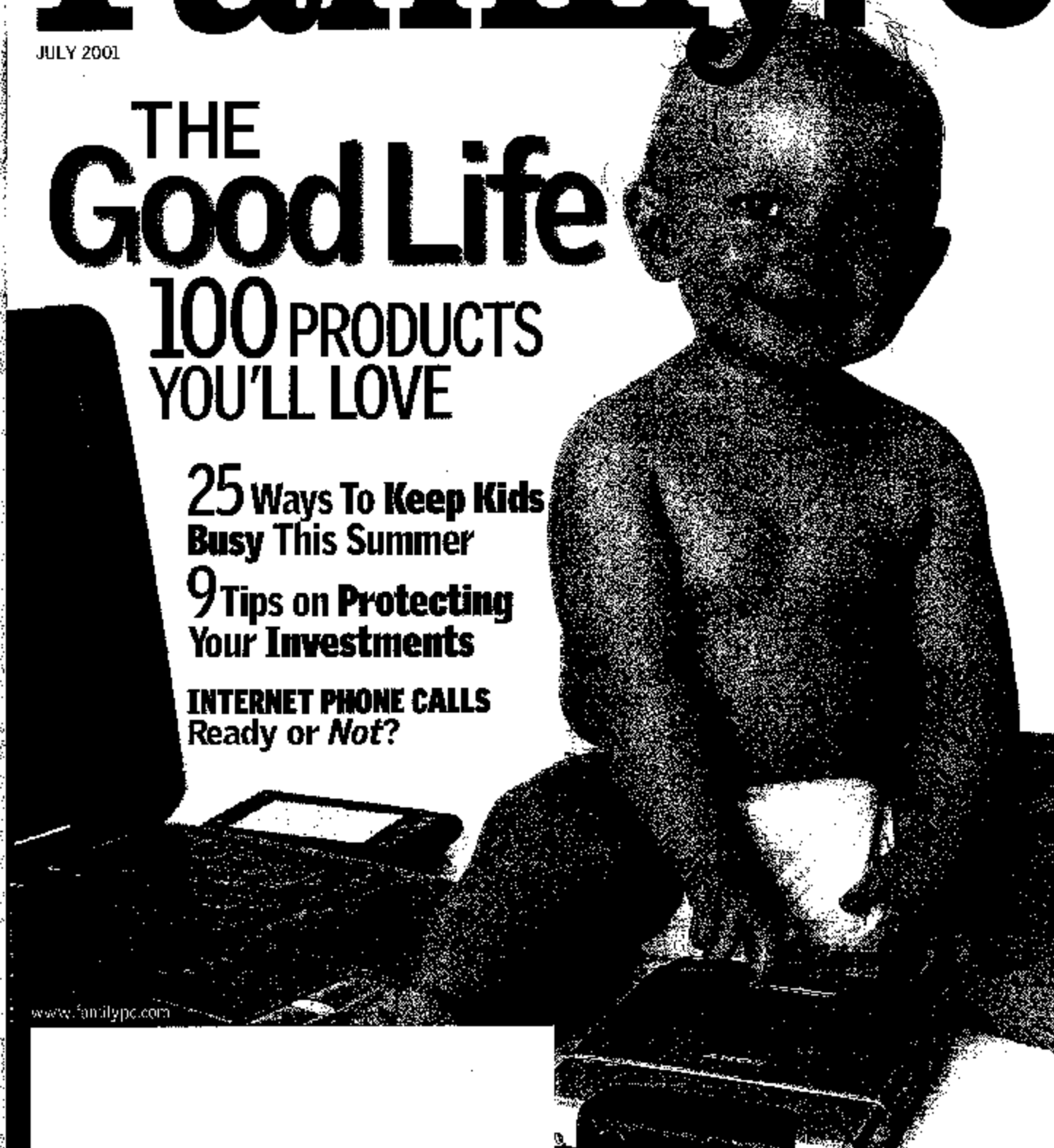
100 PRODUCTS
YOU'LL LOVE

25 Ways To Keep Kids
Busy This Summer

9 Tips on Protecting
Your Investments

INTERNET PHONE CALLS
Ready or Not?

www.familypc.com



P16023

More of what you're hungry for.

ting back and forth
a video editor (like
found in After Effects
or unnecessary. You
masks directly into
assign window. After
on previews your
only doing actual im
to walk through compo
the resolution to e
to see resources. It
to be a small



...the composition
...ing previews. An
...ancement is After
...ity to generate Ma
...ash movies direct
...with hyperlinks.
...ects correctly inter
...from the latest ver
...cher Adobe produc
...le. After Effects pre
...toshop's vector mask
...and transparencies
...ction Bundle con
...toshop files that con
...of 4GB per channel
...ity, color and After
...embed project links
...time movies.
...facts' new features
...fects exponential
...create and edit. Proj
...files artists should
...them have upgrade
...Effects 5.0
...standard version. \$650
...rds. \$1,500. Requires
...20MB hard drive space.
...Microsoft Windows 98
...Apple QuickTime 4.2.
...line



P1602

More of what you're hungry for.

ind-alone utilities would be
ensive than buying a suite.
our best bet is to buy a good
in augment it with any additio
t you need. If you get McAfee
tance, you should definitely
ditional antivirus program. You
sider a full partition backup
h as Drive Image.
bviously, you don't want to
k buying utilities. Ask yoursel
es you need most of all, and
ees accordingly.

sed the defragger to restart be
bents of the disk had changed
recommended that we change
memory settings to stop the
n growing, as detailed in the
's readme file (but not in s
But: even with this fix, Norton
t several times longer than the
s bundled with the other
anted claims that it is work
h to deal with this problem.
available to test at the time o
I defraggers have this restart
omic degree, and if another
es something to disk clu
agging process, that too can
agging program to restart. It
e sense, therefore, to have
gram running when a def
ress. However, on our test
emWorks was the only pr
lay this problem.

McAfee Utilities has another
 reTune, which defrags in t
nd by saving data in parts of
 re it won't get fragmented
mal tests, Active Tune did
ormance one way or ano
gh it may be that it takes a l
 a lot of writing to and rea
 to make a difference.

RECOMMENDED: DriveWorks, Partit

FOR PEOPLE prefer to work w
disk set up as one large spa
o partition and organize th
multiple logical drives, each
drive letter. A partition man

P15109-2

YAHOO!

INTERNET LIFE

site address guide

a tear-out index of the sites in this issue

JULY 2001

VISIT US ONLINE
AT WWW.YIL.COM/UP
FOR A CLICKABLE
VERSION OF THE GLI

FEATURES»

THE PEOPLE'S NET pages 78-83, 121

- **BLOGGER!** | blogger.com
- **METAFILTER!** | metafilter.com
- **SLASHDOT!** | slashdot.org
- **PLASTIC!** | plastic.com
- **YAHOO! GROUPS!** | groups.yahoo.com
- **ALTERNET.ORG!** | alternet.org
- **DOUBLECLICK!** | doubleclick.com
- **NERVE.COM!** | nerve.com
- **SHOUTCAST!** | shoutcast.com

- **TECH SUPPORT GUY!** | hauptman.net
- **INFOPLEASE.COM: ALMANAC SEARCH!** | infoplease.com/elmanacc.html
- **STUDYWEB!** | www.studyweb.com
- **TRANSPARENT LANGUAGE!** | transparent.com
- **NATIONALGEOGRAPHIC.COM: MAPS & GEOGRAPHY!** | nationalgeographic.com/maps
- **VOYABULARY!** | www.voyabulary.com
- **NOLO: LEGAL ENCYCLOPEDIA!** | nolo.com/legalencyclopedia

- **NATIONAL INSTITUTES OF HEALTH: HEALTH INFORMATION!** | www.nih.gov/health

HOME

- **EMBARK!** | embark.com
- **HOMESCAPE.COM!** | homescape.com
- **EXP SYSTEMS!** | exp.com
- **LIVEMANUALS!** | livemanuals.com
- **EPICURIUS!** | epicurius.com
- **MSN HOMEADVISOR!** | homeadvisor.com

SHOPPING

- **GÓMEZ.COM!** | gomez.com
- **OVERSTOCK.COM!** | overstock.com
- **ACTIVE BUYER'S GUIDE!** | activebuyersguide.com
- **ABEBOOKS.COM!** | abebooks.com
- **J.D. POWER CONSUMER CENTER!** | jdpower.com
- **CONSUMER PROTECTION!** | www.ftc.gov/ftc/consumer.htm
- **BUYERZONE.COM!** | buyerzone.com

- **NATIONAL HIGHWAY TRAFFIC SAFETY ADMINISTRATION!** | www.nhtsa.dot.gov

SUPREMELY USEFUL SITES

- **CBSHEALTHWATCH BY MEDSCAPE!** | cbs.medscape.com
- **CARSDIRECT.COM!** | carsdirect.com
- **MORNINGSTAR.COM!** | morningstar.com
- **WEATHER.COM!** | weather.com
- **MONSTER.COM!** | monster.com
- **EXPEDIA.COM!** | expedia.com
- **TRAVELCITY.COM!** | travelcity.com

- **CITYSEARCH.COM!** | citysearch.com
- **YOURDICTIONARY.COM!** | yourdictionary.com
- **UNITED STATES POSTAL SERVICE: ZIP CODE LOOK-UP!** | usps.com/ezsc/lookups/lookups.htm
- **555-1212.COM!** | 555-1212.com
- **THE INTERNET MOVIE DATABASE!** | imdb.com

- **OFOTO!** | ofoto.com
- **ASKME.COM!** | askme.com
- **FREEMERCHANT.COM!** | freemerchant.com

10 INTERNET ESSENTIALS

- **YAHOO!** | yahoo.com
- **GOOGLE!** | google.com
- **DEJA POWER SEARCH!** | q110.com/~jrcromy/news/deja.html
- **METACRAWLER!** | metacrawler.com
- **CNET SEARCH.COM!** | search.cnet.com
- **SAFEWEB!** | safeweb.com

Y-ILife ONLINE

USE THESE LINKS TO EXPLORE THE OTHER HALF OF Y-ILIFE

DAID MPTBUZZ! | Give the world a taste of your own... [www.daidmptbuzz.com](#)

FORWARD/LOOK OF THE DAY! | ... [www.forwardlook.com](#)

FREERIES, PARAGAMES, AND CONTESTS! | ... [www.freeries.com](#)

INCREDIBLY USEFUL SITE OF THE DAY! | ... [www.usful.com](#)

DAID DOUBLE DOWNLOAD! | ... [www.daiddouble.com](#)

AST TREASURE GUY! | ... [www.asttreasure.com](#)

YOUR YASTROGOSER! | ... [www.yastrogoser.com](#)

NETRADIO STATION OF THE DAY! | ... [www.netradio.com](#)

BRETT STRANDE'S! | ... [www.brettstrande.com](#)

BACK ISSUES! | ... [www.backissues.com](#)

- **ALL YOUR BASE ARE BELONG TO US!** | allyourbase.org
- **BUDWIZER.COM: WASSUP PAGE!** | budwizer.com/wassup.html
- **HYAKUGOJYUICHIII!** | onimutation.mikamiyo.wata/infomf2.htm

50 MOST INCREDIBLY USEFUL SITES pages 66-73 TRAVEL

- **NATIONAL PARK GUIDE!** | www.nps.gov/pares.html
- **MAPBLAST!** | mapblast.com
- **METROPLANET!** | metropia.net
- **U.S. DEPARTMENT OF STATE: TRAVEL AND LIVING ABROAD!** | state.gov/travel
- **QUICKBOOK!** | quickbook.com
- **FODORS.COM!** | fodors.com
- **REFERENCE**
- **TIMETICKER!** | timeticker.com
- **FINDTUTORIALS.COM!** | findtutorials.com
- **BARTLEBY.COM: REFERENCE!** | bartobv.com/reference
- **FEDSTATS!** | www.fedstats.gov

- **AJAVISTA!** | av.com
- **FINANCE**
- **TAXPLANET.COM!** | taxplanet.com
- **JUSTQUOTES.COM!** | justquotes.com
- **BANKRATE.COM!** | bankrate.com
- **SMARTMONEY.COM: BROKER METER!** | smartmoney.com/brokermeter
- **HOOVER'S ONLINE!** | hooversonline.com
- **OANDA.COM!** | oanda.com
- **ENTERTAINMENT**
- **MOVIES.COM!** | movies.com
- **IFILM!** | ifilm.com
- **MATCH.COM!** | match.com
- **ESPN.COM!** | espn.com
- **GIST TV LISTINGS!** | gist.com
- **COMMUNICATIONS**
- **TELLME!** | tellme.com
- **SEARCHBUG: PACKAGE TRACKING!** | searchbug.com/packages
- **HOMESTEAD!** | homestead.com
- **HEALTH**
- **HELPCENTER!** | helping.apa.org
- **HEALTHGRADES!** | healthgrades.com



Verstad

P15280



Gateway Country



Things are different in the country.