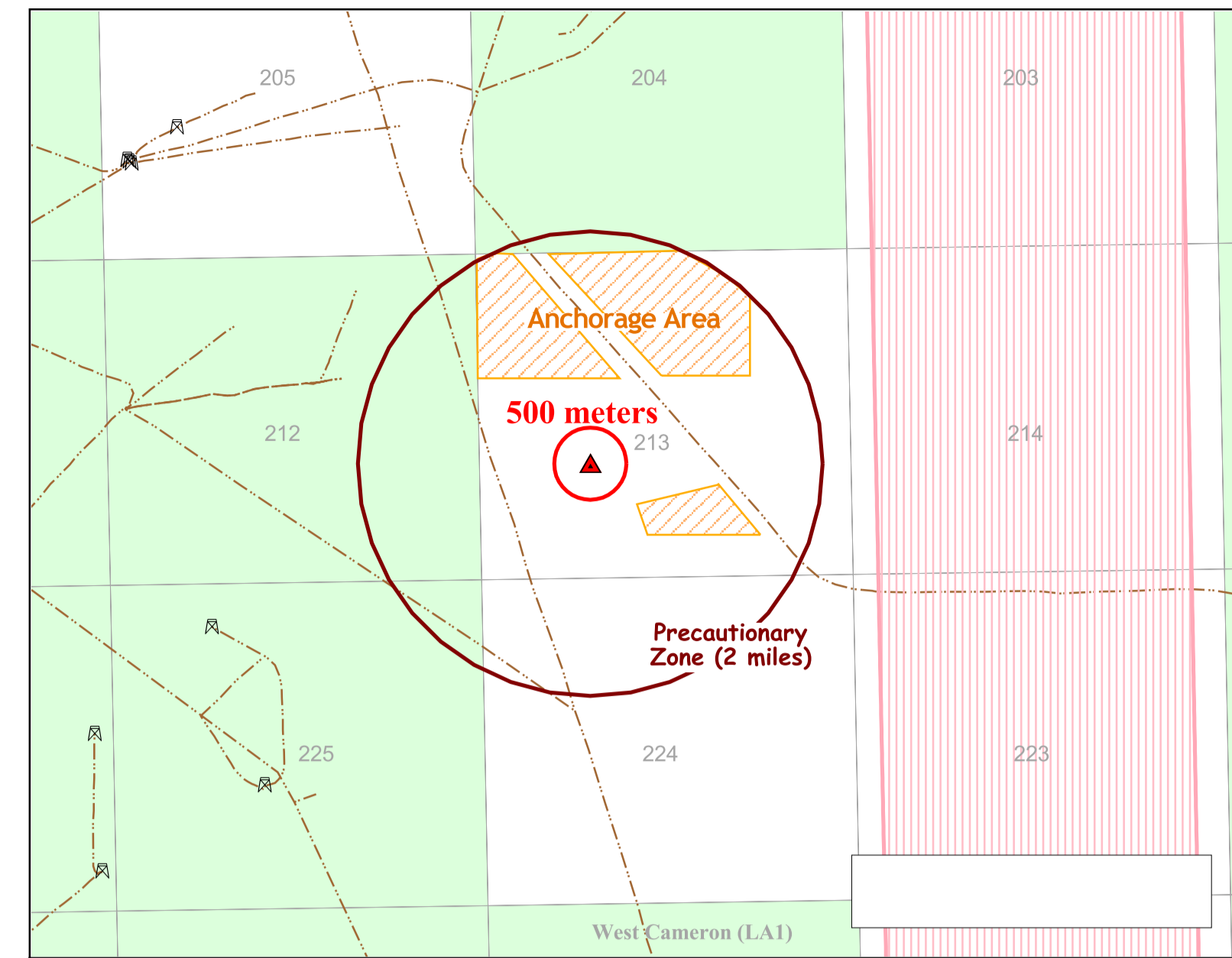
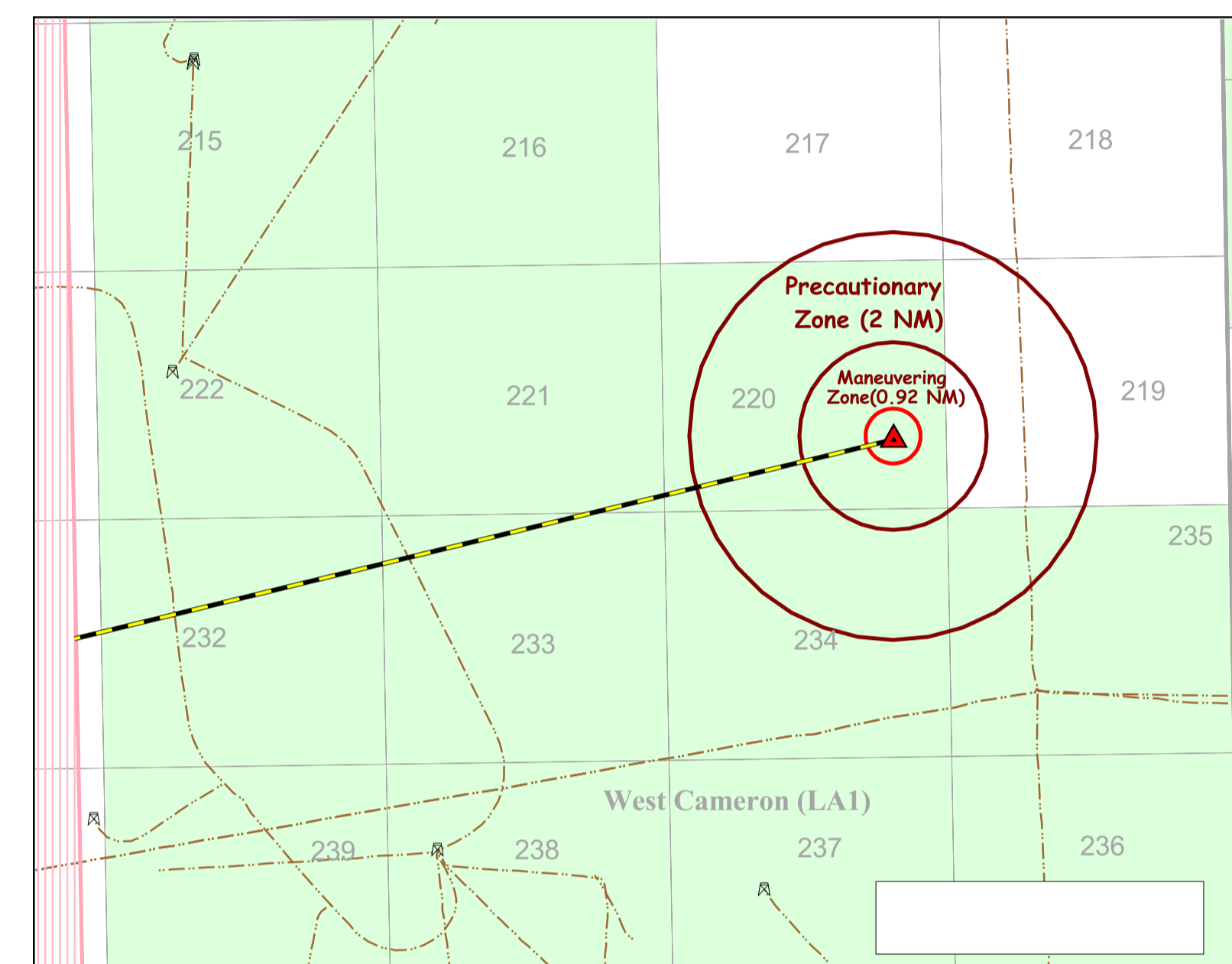


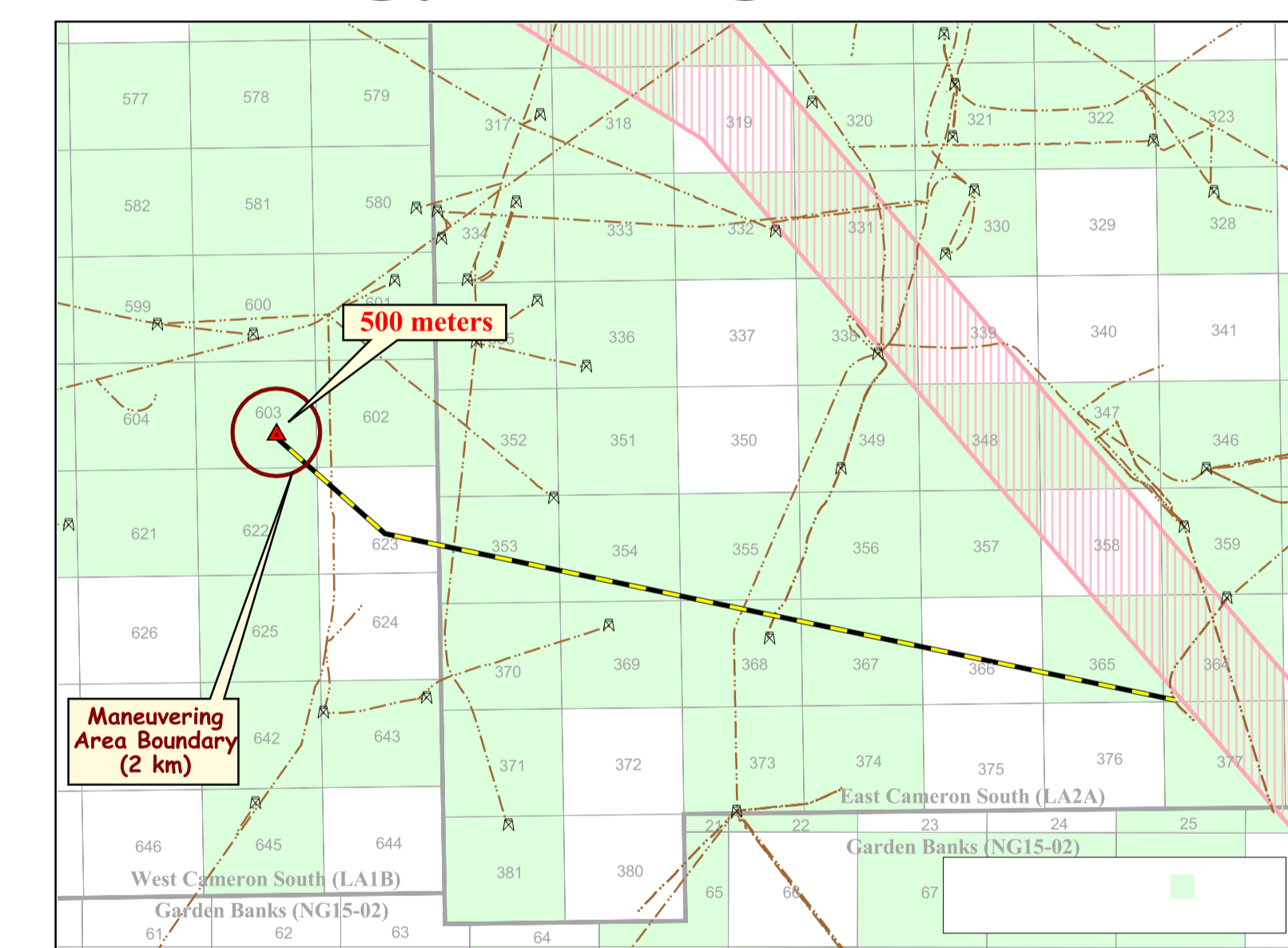
Gulf Landing (Shell)



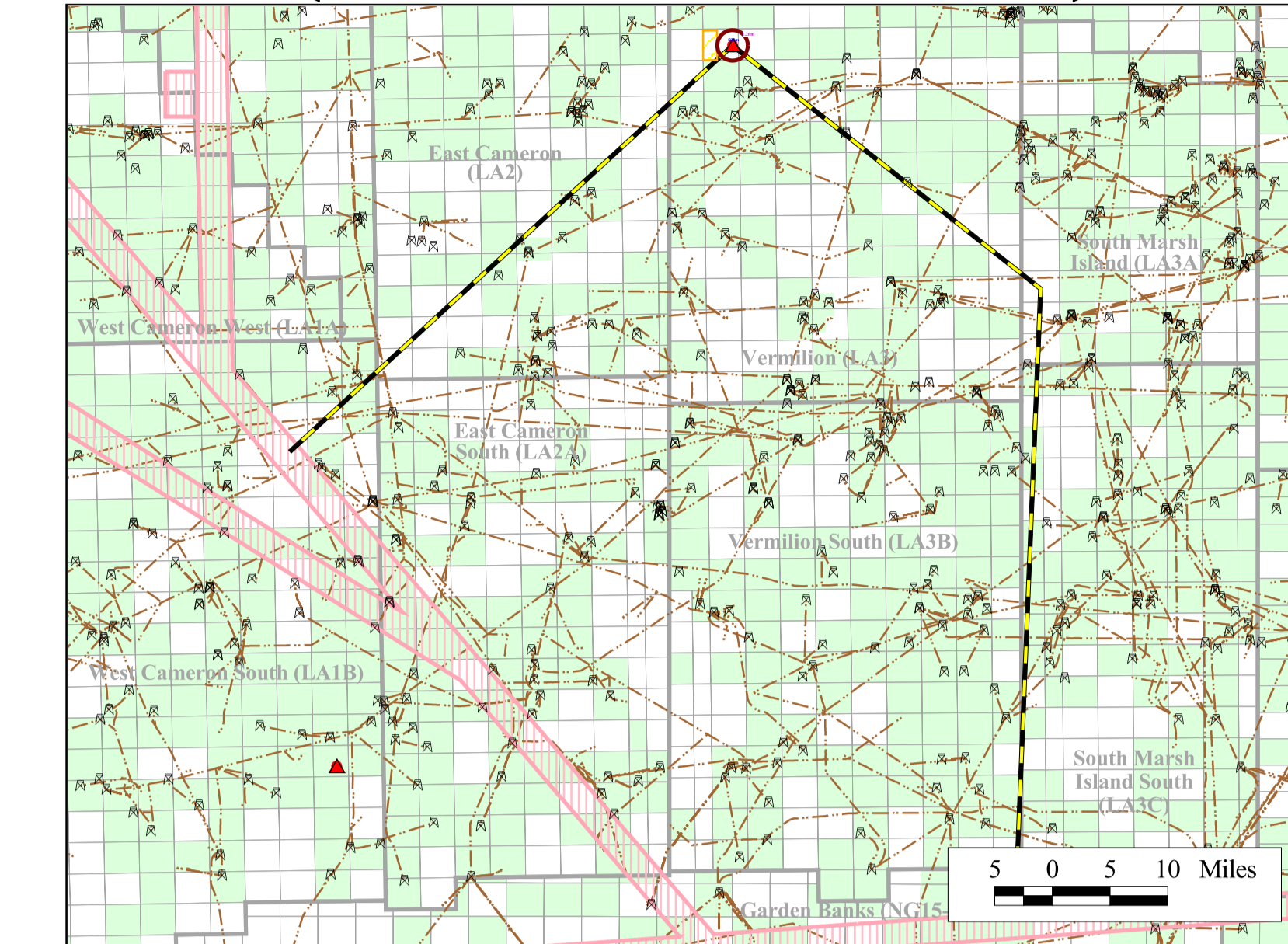
Pearl Crossing (ExxonMobile)



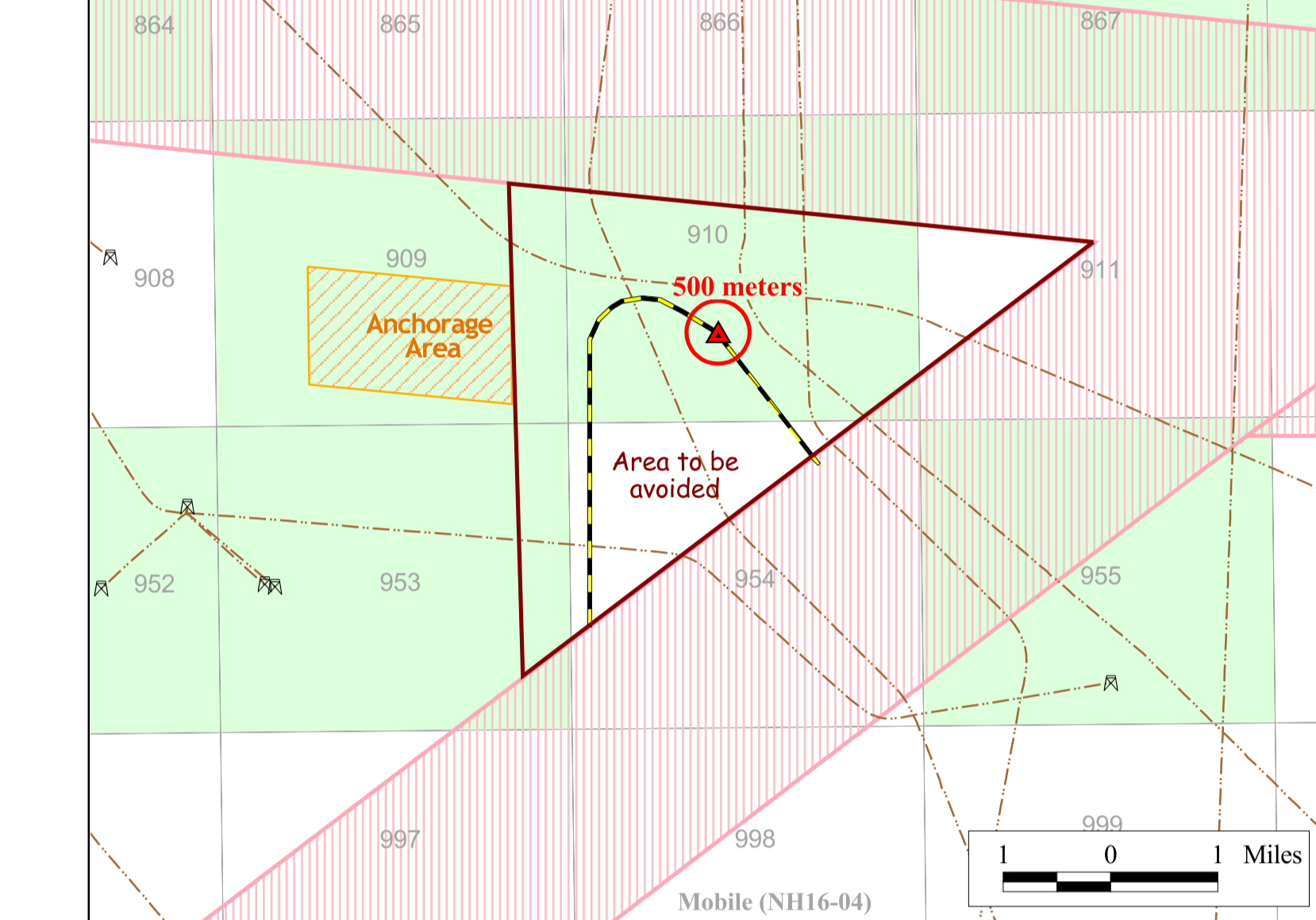
Energy Bridge (El Paso)



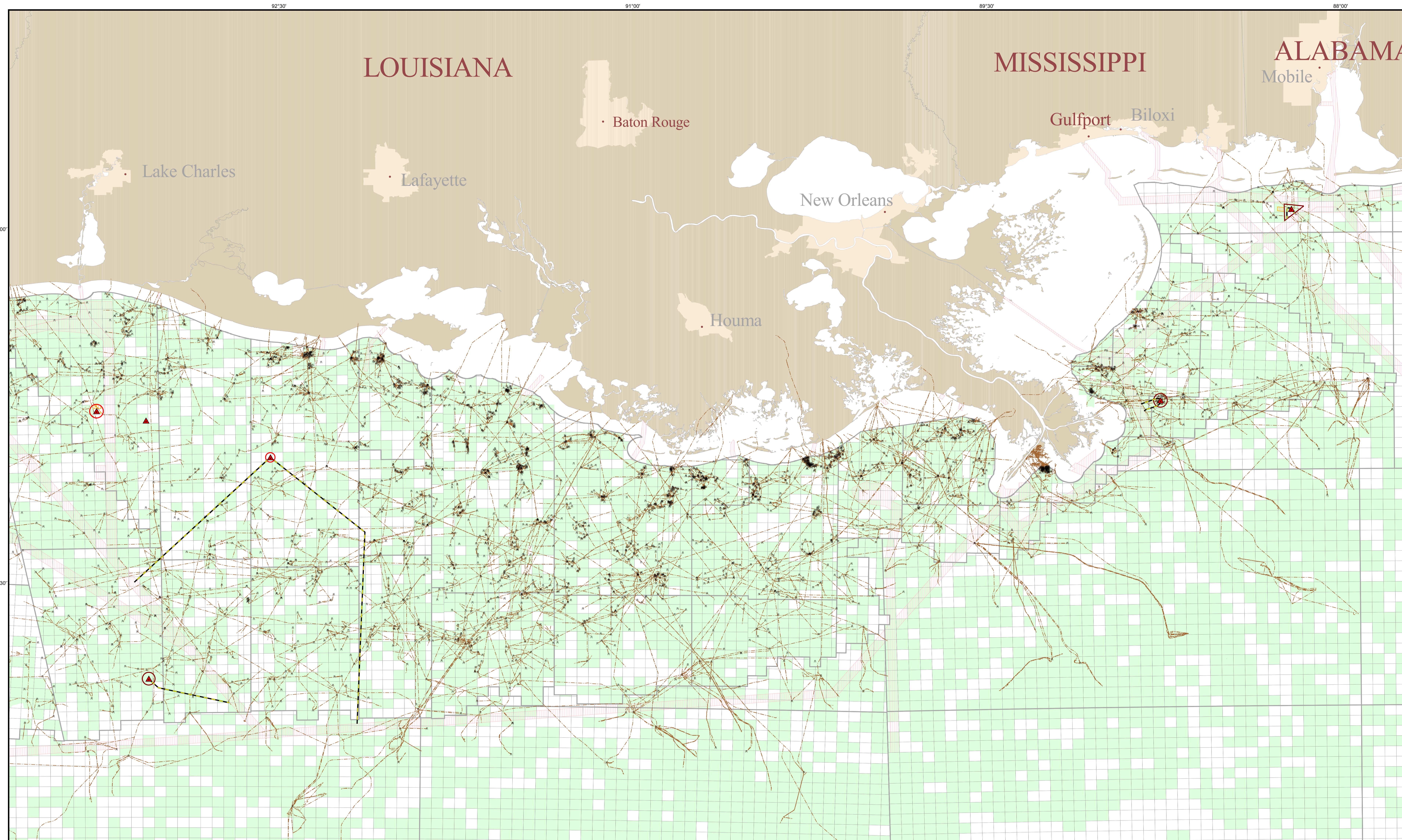
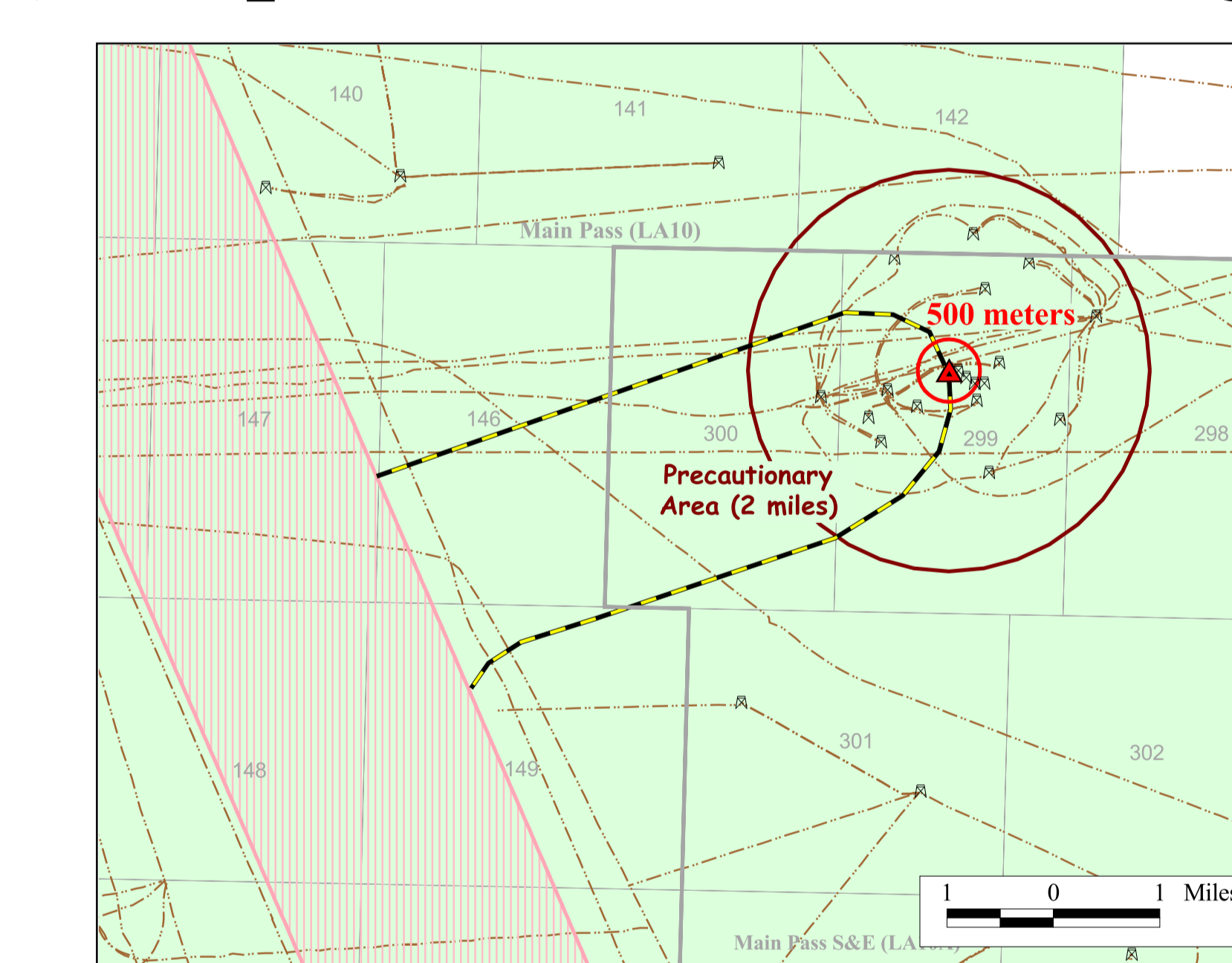
Port Pelican (ChevronTexaco)



Compass Port (ConocoPhillips)



Main Pass Energy Hub (Freeport-McMoRan Energy)

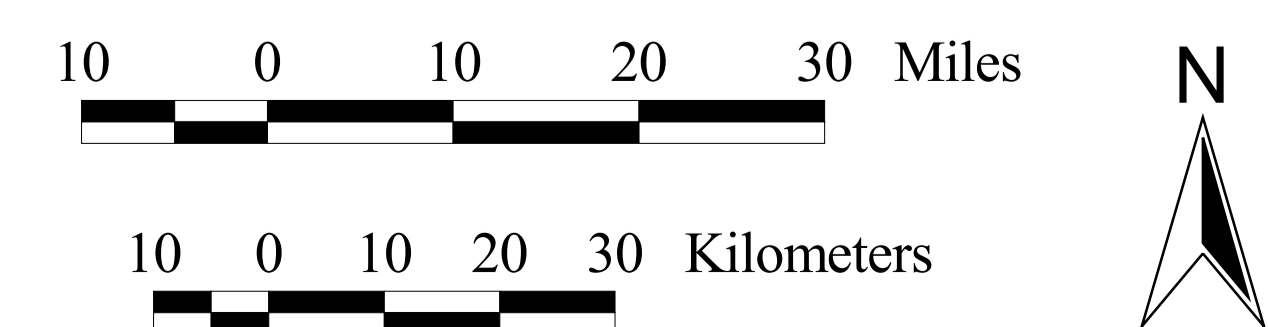


Proposed Offshore LNG Receiving Terminals in the Gulf of Mexico

August 25, 2004

MMS Department of the Interior
Minerals Management Service
Gulf of Mexico OCS Region

Scale: 1:655000
Projection: Geographic
Datum: NAD27
Units: DD
Spheroid: Clarke1866

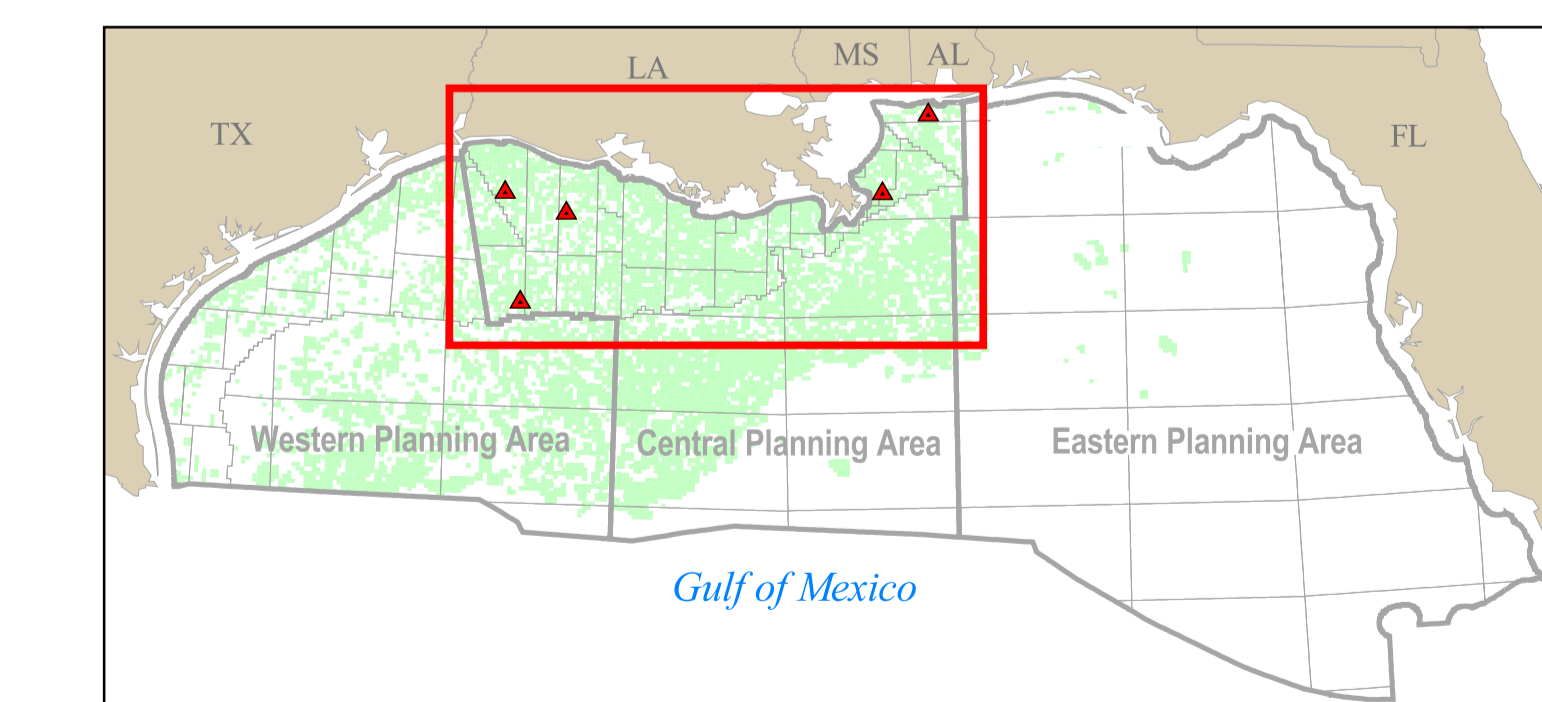


Liquid Natural Gas (LNG) Facility Features

- LNG Proposed Site
- Safety Zone 500 meters
- Proposed Route
- Anchorage Area
- Zone or Area (shown with description)

- Platform
- Pipeline

- Fairway
- Active Lease
- Block



(Note: LNG infrastructure locations are an approximation.)

Sources: LNG infrastructure spatial information was compiled from various reports. In some cases, the infrastructure was created by visual interpretation of the figures in these reports. The data shown are an approximation of the location of LNG infrastructure and should not be used for final evaluation.

mile (mi) = 5280 ft
nautical mile (nm) = 6076 ft
kilometer (km) = 3281 ft
meter (m) = 3.281 ft