



BLM IT SYSTEM ARCHITECTURE

INSTALLATION INSTRUCTIONS FOR WFSA SOFTWARE

The following instructions are for a manual installation of the current WFSA Plus 03 (and the soon to be released WFSA Plus 4.1) (Wildland Fire Situation Analysis) software.

Summary: There have been conflicts between the BLM PC system configuration/security design and the WFSA software. Thanks to the BLM National Test Lab Systems in Denver a process has been designed to permit the continued use of the WFSA software on BLM PC's, specifically those running with a Windows XP operating system.

Briefly, the process requires a user to be granted temporary system administrator privileges – install the program, run through a series of steps (under the users profile) within the program which will register the user (Active X components) to permit future file writing to the folders created on the C Drive and printing. Once these brief steps have been successfully undertaken the user can relinquish system admin privileges and log back in as a basic user and successfully run the program. Basically do a brief practice WFSA and you will have accomplished two objectives – set up your PC to run the program and practiced a WFSA drill before you actually need it! Complete set of instructions follow.

A.1 PRE-INSTALLATION REQUIREMENTS:

1. Close all other applications.
2. Check the available disk space on the client machine. Should have 75+ MB available free disk space for the software installation.

Note: The software will be installed on the local hard drive under the Program Files directory (e.g.: [drive]:/Program Files/WFSAPlus) by logging in as the user with administrative privileges. A brief run of the software will be required to register the ActiveX components of the WFSA program. Administrative privileges will then be removed from the user. Once the ActiveX components have been registered, the user will be able to use the program without having administrative privileges. After the software is installed, the systems administrator will also be required to add "Authenticated Users" to the security permissions of the WFSA directory tree within "Program Files". Once added, the "Authenticated Users" group must have privileges set for modify or full control which enables the application to write to the C:\Program Files\WFSAPlus directories as needed.

WFSA Plus 04.1 is distributed either electronically over the Internet or on CD-ROM. To download software from the WFSA web site, go to the URL:

<http://www.fs.fed.us/fire/wfsa/index.htm>. Locate Downloads in the right column and select the executable file WFSAPlus041Setup.exe. Download to temp directory on local drive.

A.2 BEGIN INSTALLATION:

1. Log in with an account that has local admin rights to the workstation.
2. Right-click on **My Computer**, then click on **Manage**. The **Computer Management** window is displayed. See figure 1. Double-click on **Local Users and Groups**.

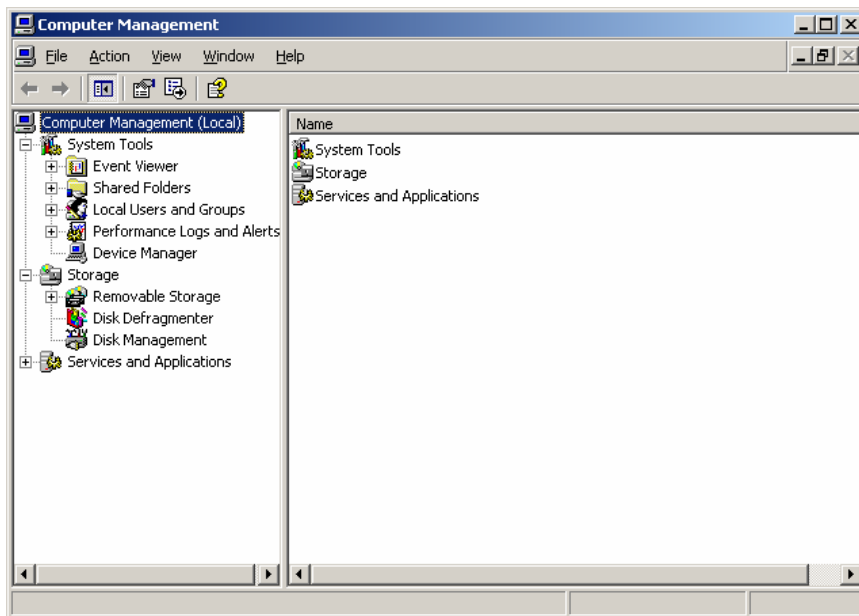


Figure 1. Computer Management window.

3. Double-click **Groups**. See Figure 2. Double-click **Administrators** in the right section of the window.

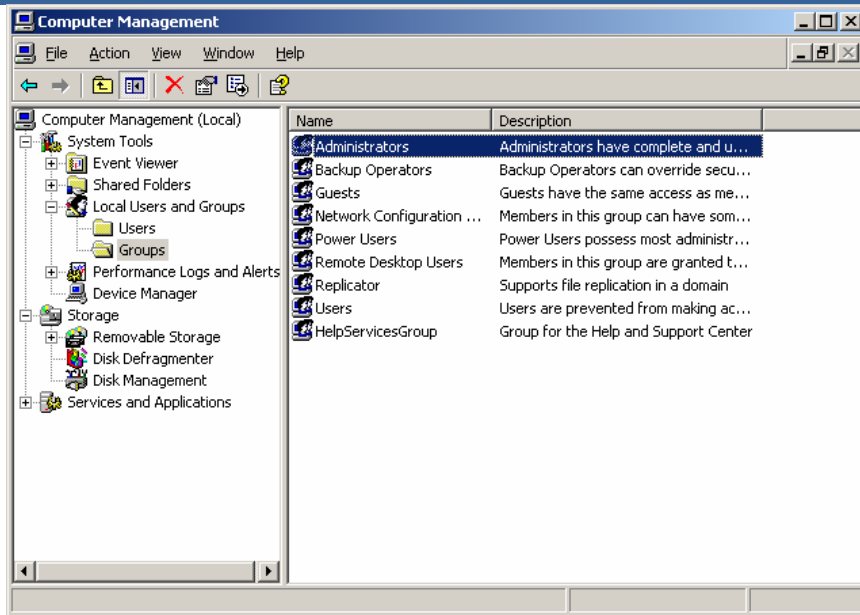


Figure 2. Computer Management window.

4. Click the **Add** button in the **Administrators Properties** window. See figure 3.

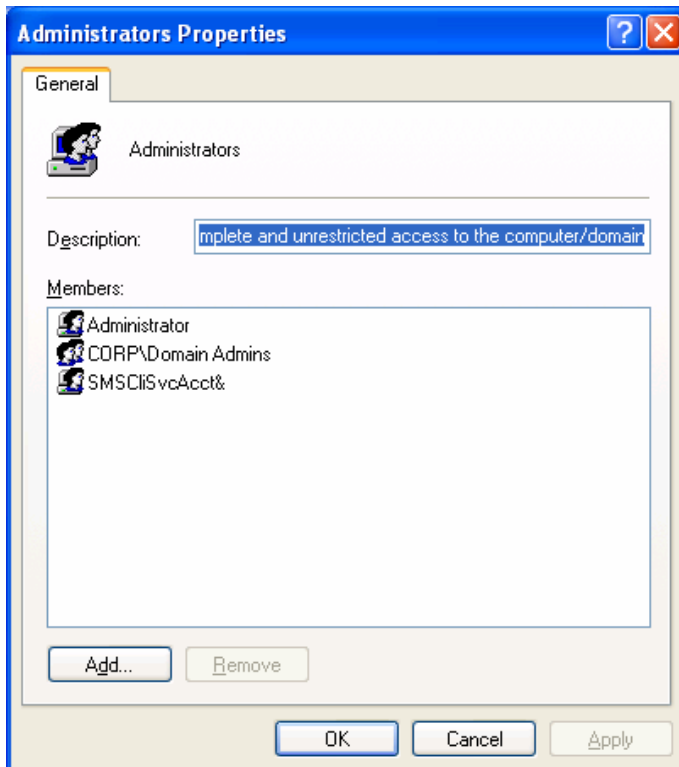


Figure 3. Administrators Properties window.

5. Enter the login name of the user in the **Select Users or Groups** window. See figure 4.

Click the **OK** button.

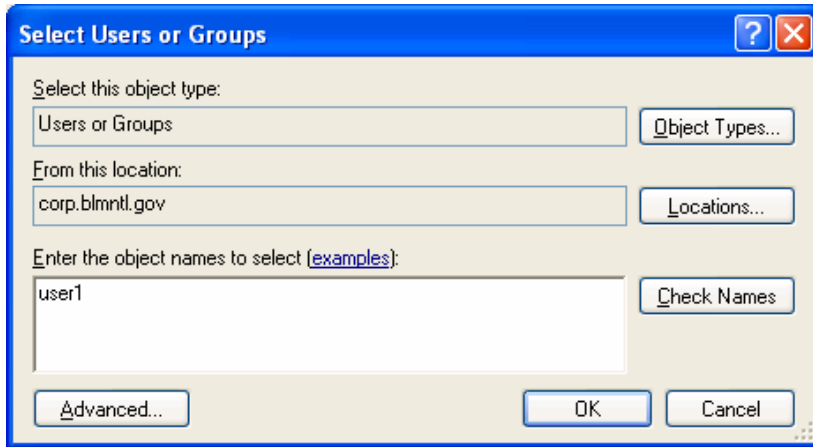


Figure 4. Select Users or Groups window.

6. The user is now a member of the local Administrators group as shown in the **Administrators Properties** window. See figure 5.
Click the **OK** button.

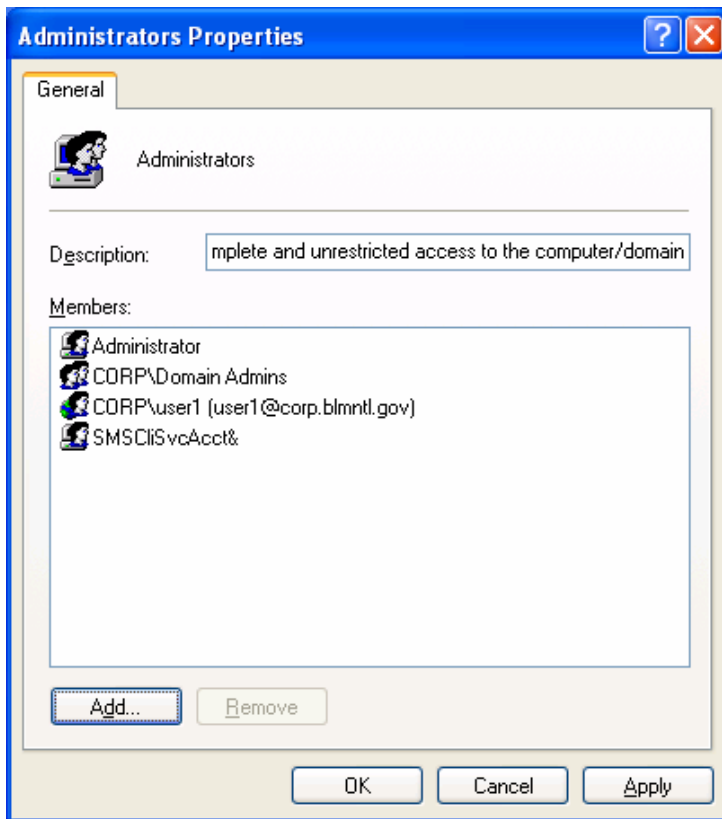


Figure 5. Administrators Properties window.

7. Close the **Computer Management** window.

- Log out of the computer.
8. Log into the computer using the user's login account (the same account that was previously added).
 9. Select **Run** from the **Start** menu.
 10. Select the **Browse** button from the **Run** window. Locate the WFSA setup file either in the Temp folder (download from web site) or from CD ROM drive. The filename is **WFSAPlus041Setup.exe**.
 11. Select the **Open** button from the Browse window.
 12. Select the **OK** button from the Run window.
 13. The **InstallShield Wizard** window is displayed briefly. See Figure 6.

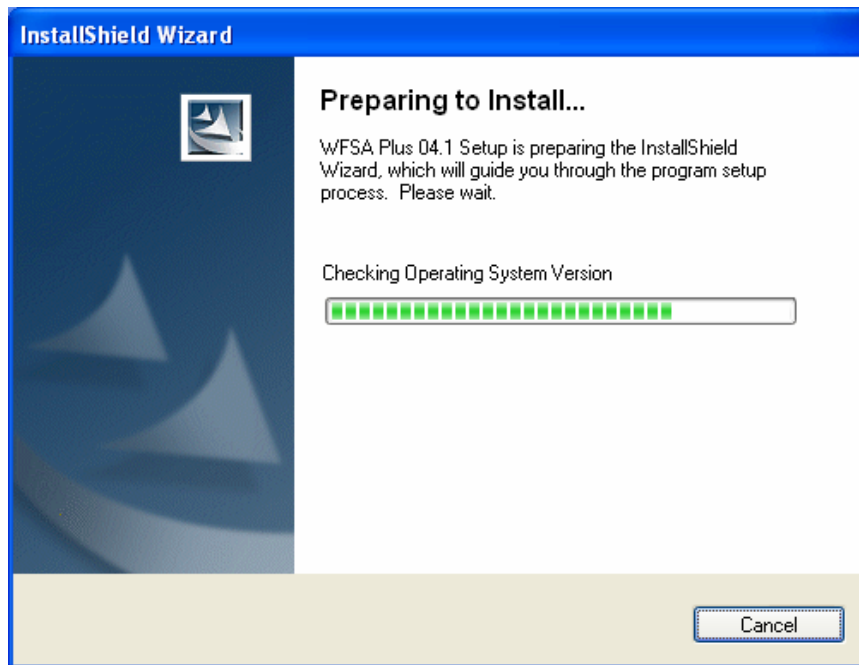


Figure 6. InstallShield Wizard window.

14. The **WFSA Plus 04.1 - InstallShield Wizard** welcome window is displayed. See Figure 7.
Select the **Next** button.



Figure 7. WFSA Plus 04.1 - InstallShield Wizard welcome window.

15. The **WFSA Plus 04.1 - InstallShield Wizard Destination Folder** window is displayed. See Figure 8.
Select the **Change** button.

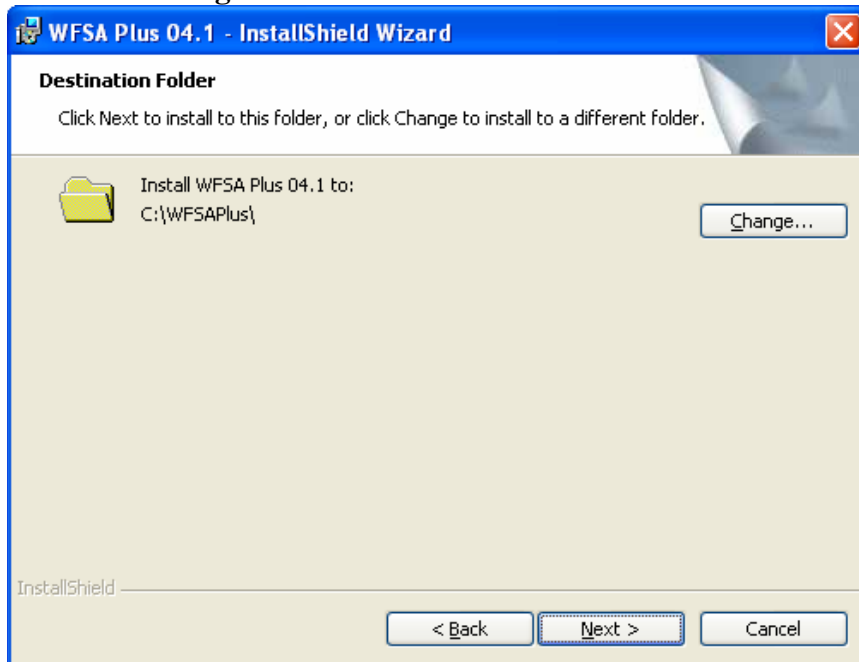


Figure 8. WFSA Plus 04.1 - InstallShield Wizard Destination Folder window.

16. The **WFSA Plus 04.1 - InstallShield Wizard Change Current Destination Folder** window is displayed. See Figure 9.

Change the installation path to **C:\Program Files\WFSAPlus** in the **Folder name:** field.
Select the **OK** button.

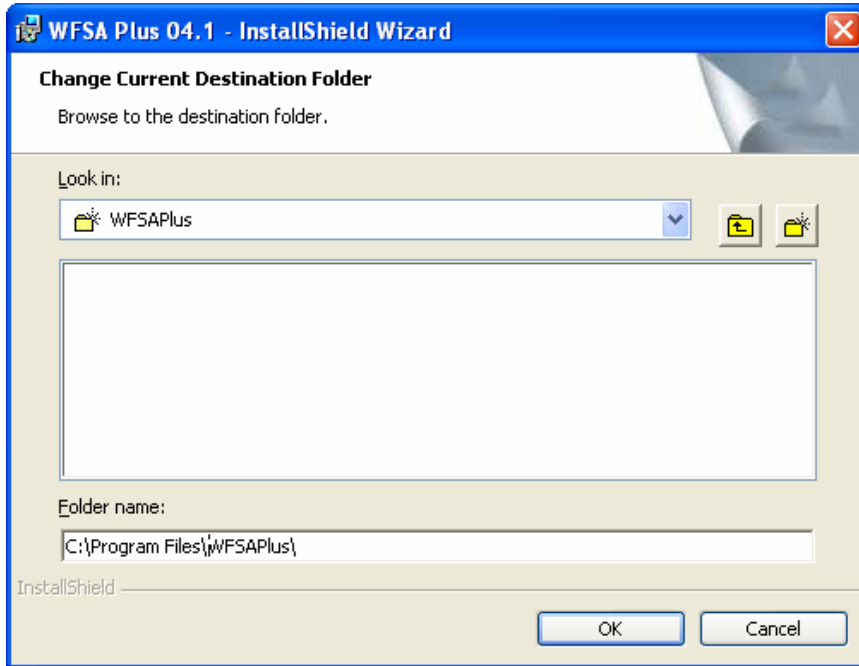


Figure 9. WFSAPlus 04.1 - InstallShield Wizard Change Current Destination Folder window.

17. The **WFSAPlus 04.1 - InstallShield Wizard** Destination Folder window is re-displayed with the installation path showing **C:\Program Files\WFSAPlus** . See Figure 10.
Select the **Next** button.

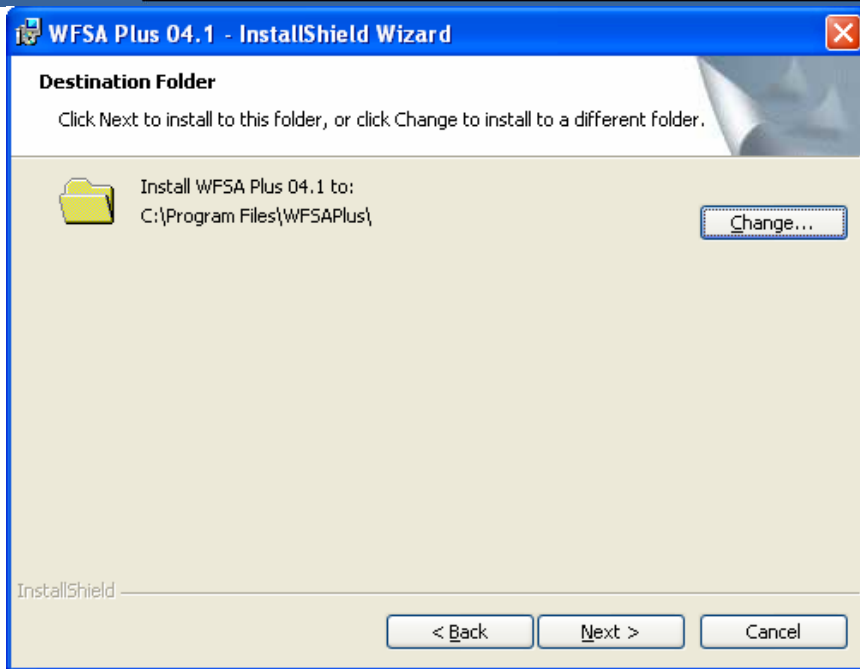


Figure 10. WFSA Plus 04.1 - InstallShield Wizard Destination Folder window.

18. The **WFSA Plus 04.1 - InstallShield Wizard Ready to Install the Program** window is displayed. See Figure 11. Select the **Install** button.

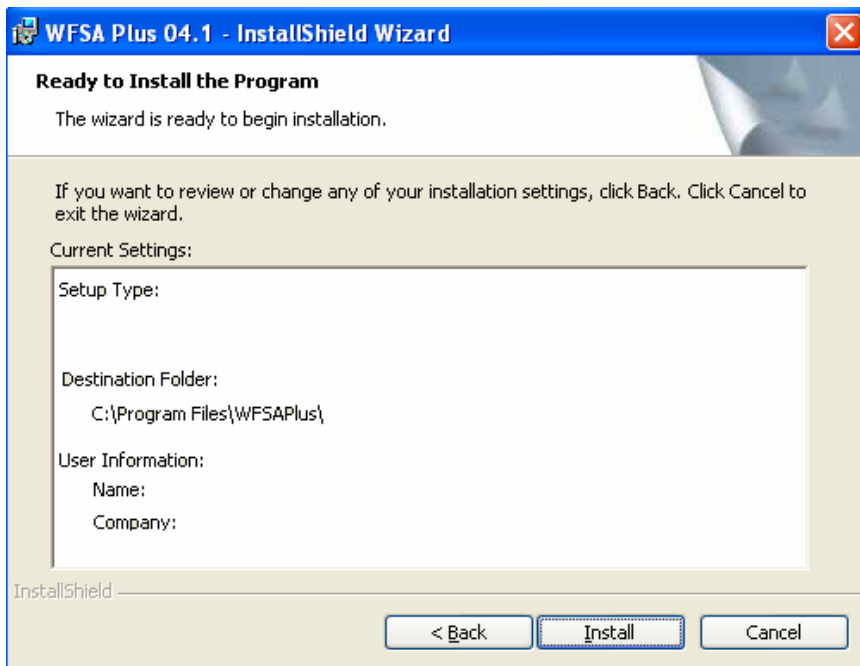


Figure 11. WFSA Plus 04.1 - InstallShield Wizard Ready to Install the Program window.

19. The **WFSA Plus 04.1 - InstallShield Wizard** Installing WFSA Plus 04.1 window is displayed briefly. See Figure 12.

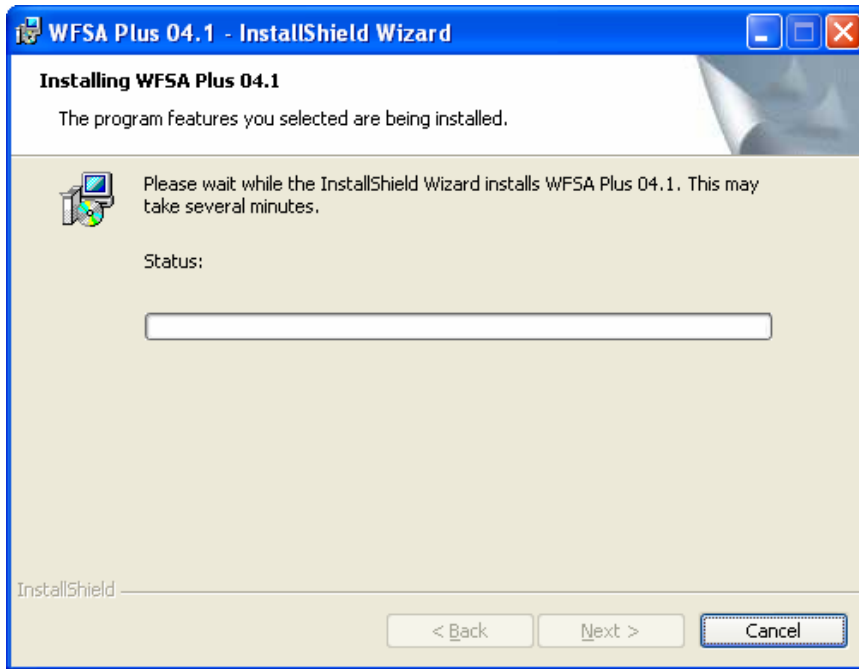


Figure 12. WFSA Plus 04.1 - InstallShield Wizard Installing WFSA Plus 04.1 window.

20. The **WFSA Plus 04.1 - InstallShield Wizard** Completed window is displayed. See Figure 13. Click the **Finish** button.

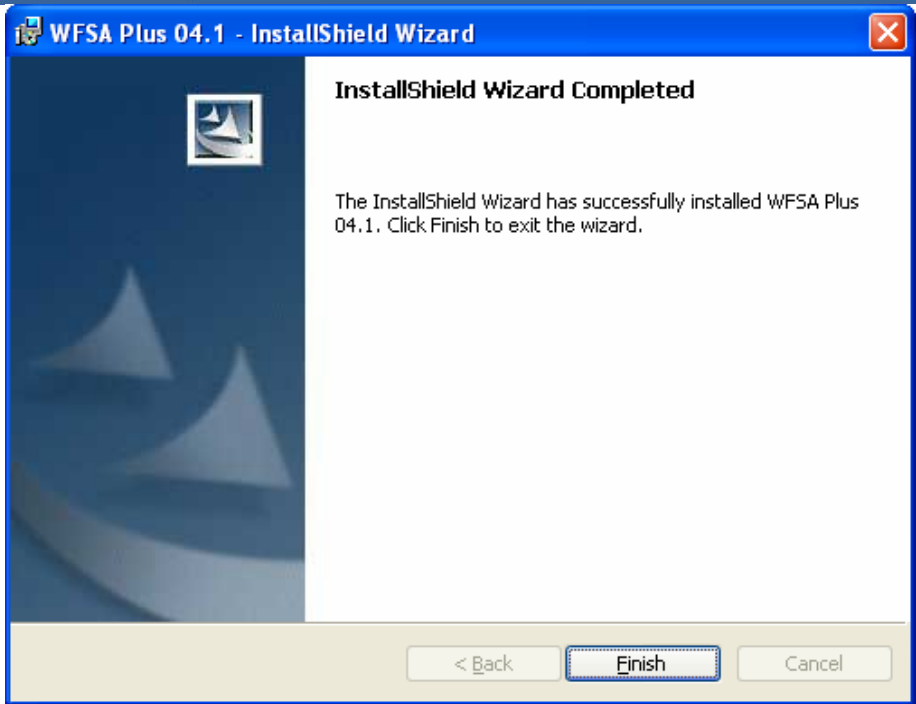


Figure 13. WFSA Plus 04.1 - InstallShield Wizard Completed.

21. Click **Start | Programs | WFSAPlus | WFSAPlus** to launch the WFSA program while still logged in as the user.
22. Click the **WFIP** button on the **WFSA Plus 04.1** window. See figure 14.

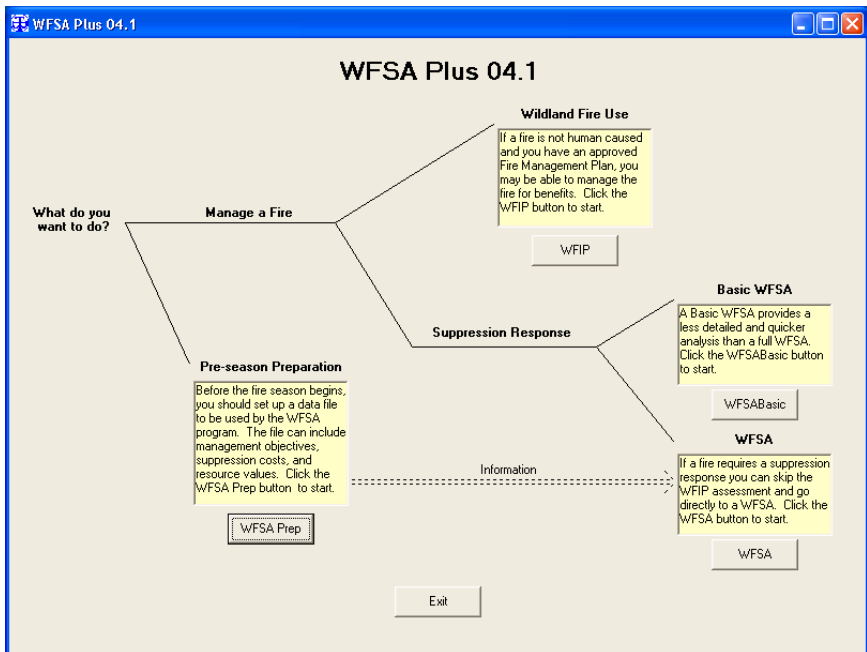


Figure 14. WFSA Plus 04.1 window.

23. **Note:** The following steps are very important. While logged in as the user, each of the following actions must be initiated for the first time while having administrative privileges. These actions will register the ActiveX components of the WFSA program. Once the ActiveX components have been registered, the user will be able to use the program without having administrative privileges. Click on the **Open** button on the **WFIP** window. See figure 15.

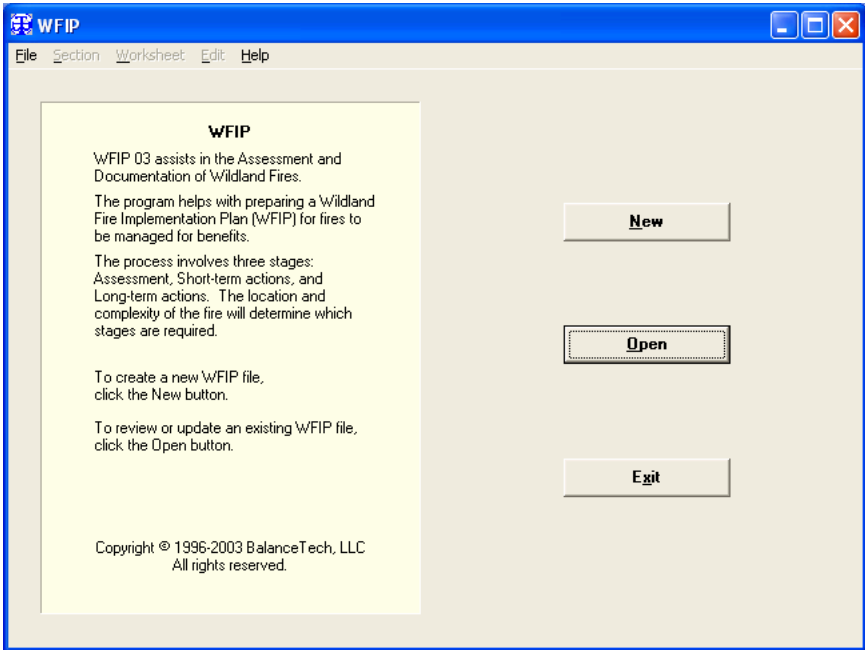


Figure 15. WFIP window.

24. Click the **Cancel** button on the **Open WFSA Plus file** window. See figure 16.

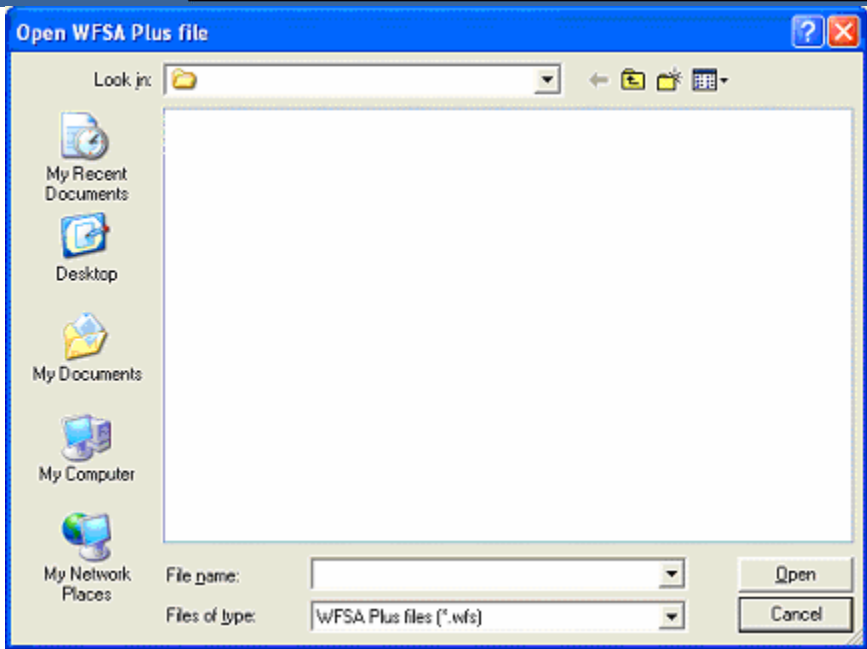


Figure 16. Open WFSA Plus file window.

25. Click the **New** button on the **WFIP** window. See figure 17.

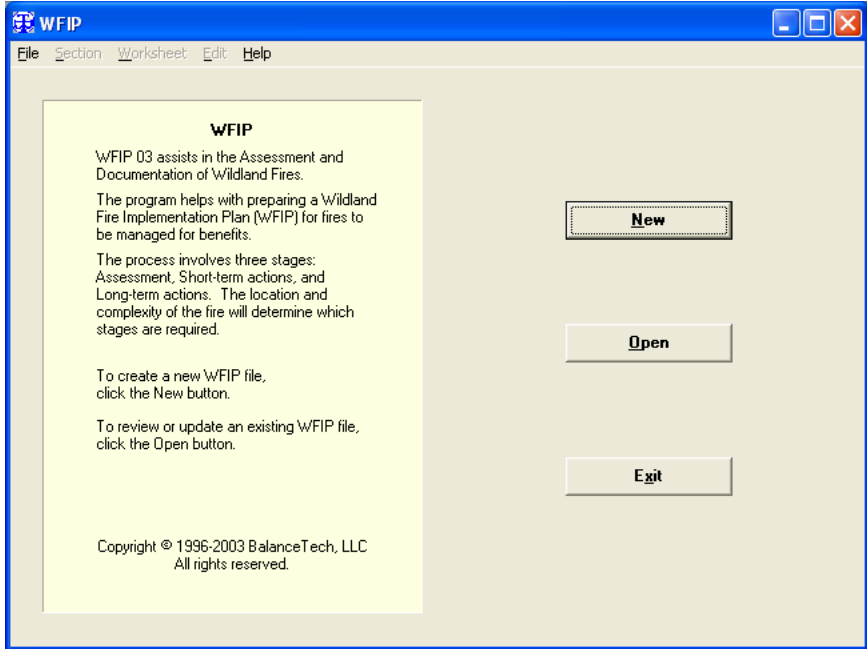


Figure 17. WFIP window.

26. Click the **Save** button on the **Create new WFSA Plus file** window. See figure 18.

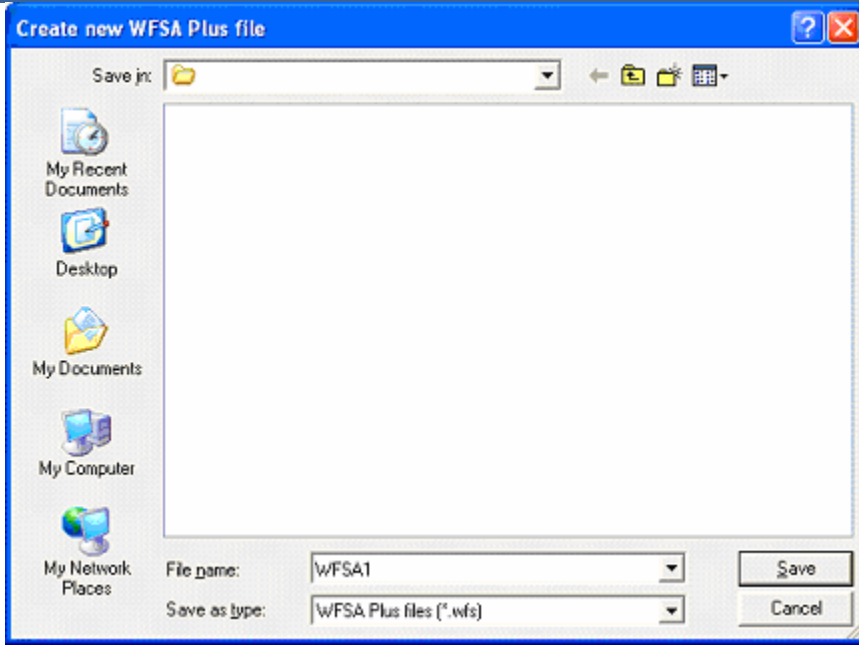


Figure 18. Create new WFSA Plus file window.

27. The **Stage I: Assess** tab in the **WFIP: [<file name>] New** window is displayed. See figure 19.

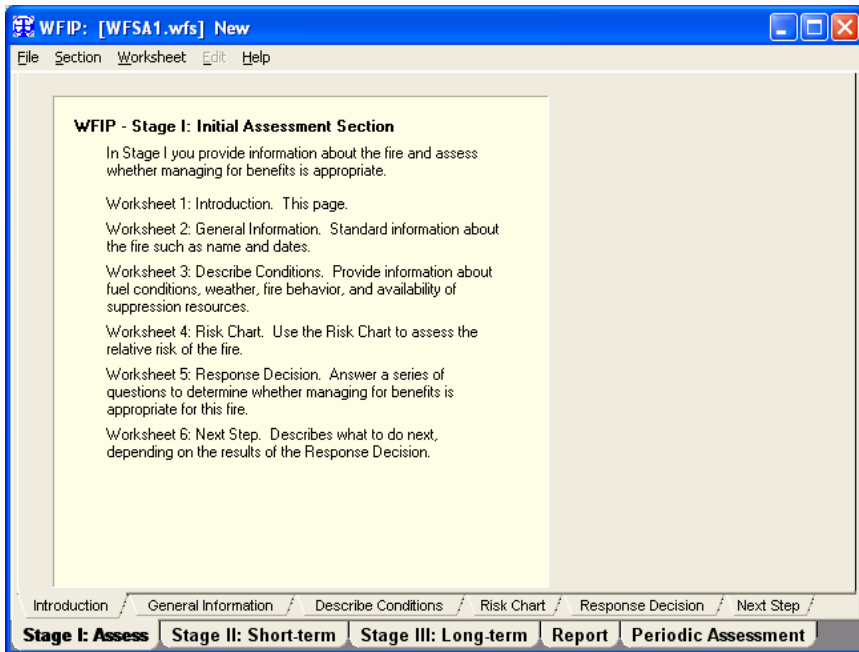


Figure 19. WFIP: [<file name>] New window.

28. Select the lower **Report** tab in the **WFIP: [<file name>] New** window. See figure 20.

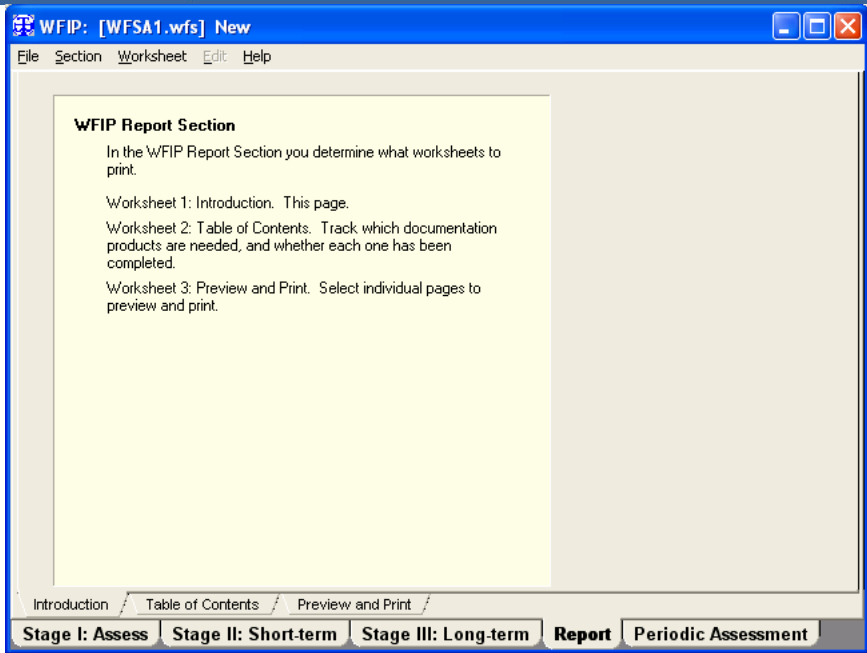


Figure 20. WFIP: [<file name>] New window.

29. Select the upper **Preview and Print** tab in the WFIP: [<file name>] New window. See figure 21.
Click the **Save to File** button.

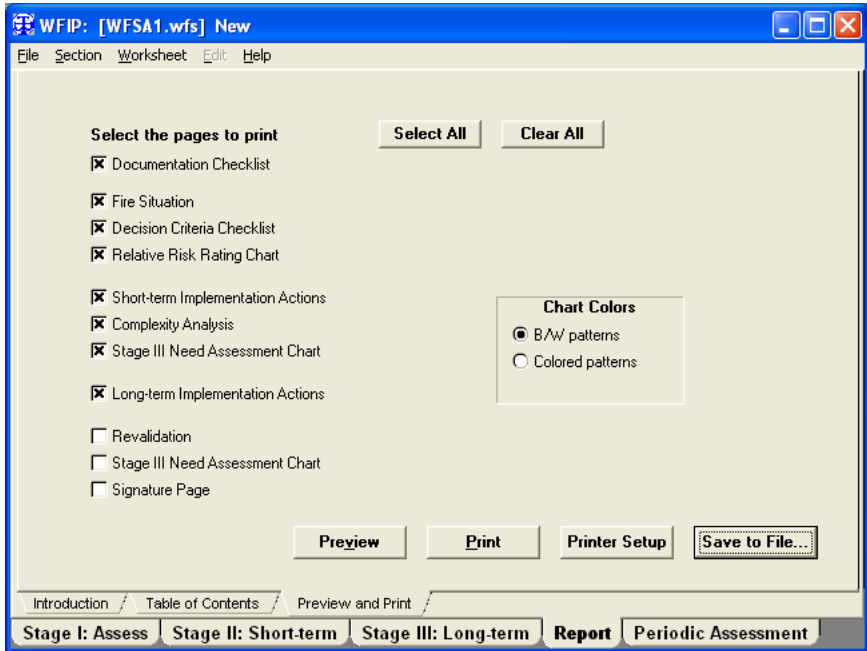


Figure 21. WFIP: [<file name>] New window.

30. Click the **Save** button on the **Save as RTF File** window. See figure 22.

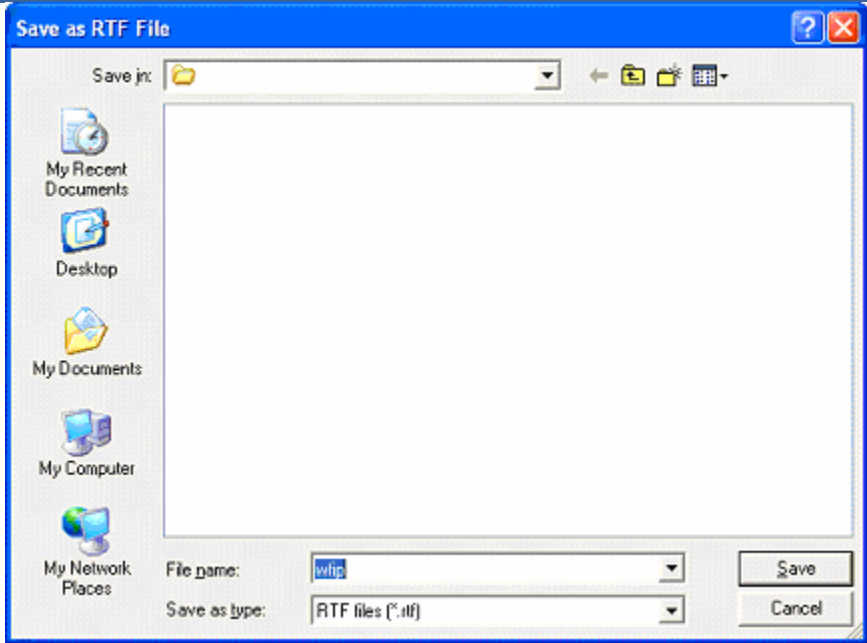


Figure 22. Save as RTF File window.

31. Click the **Clear All** button in the **WFIP: [<file name>] New** window.
 See figure 23.
 Select a check box for one item from the list on the left.
 Click the **Print** button.
 (A print dialog box is displayed briefly indicating that the page is printing.)
 Select **Exit** from the **File** drop down menu.

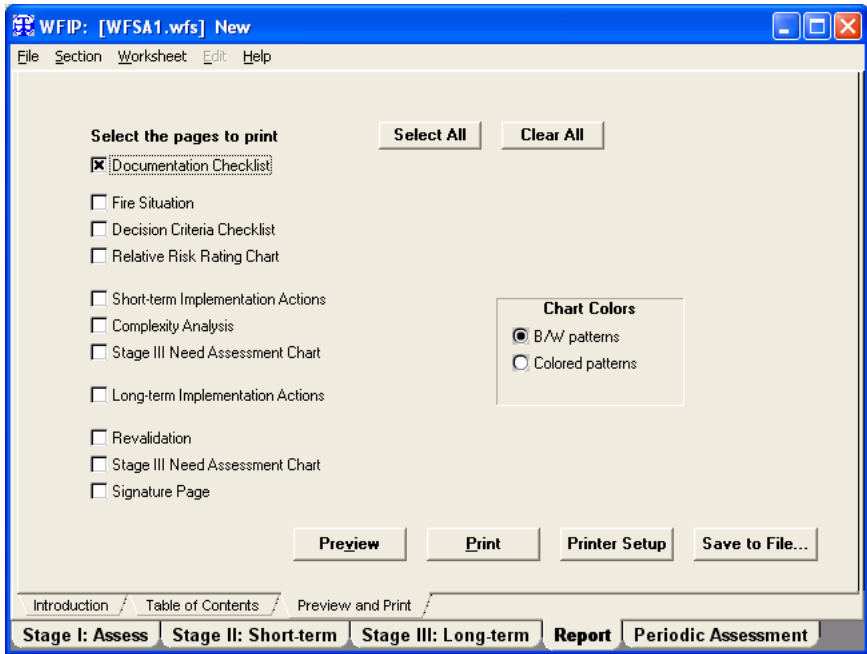


Figure 23. WFIP: [<file name>] New window.

32. Click **Start | Programs | WFSAPlus | WFSAPlus** to launch the WFSAPlus program.

33. Click the **WFSAPrep** button on the **WFSAPlus 04.1** window. See figure 24.

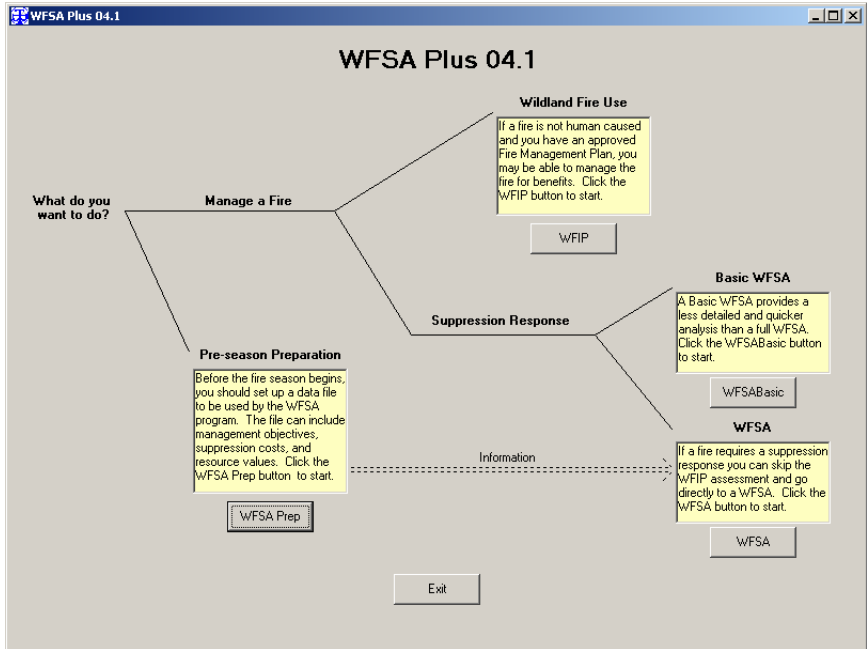


Figure 24. WFSAPlus 04.1 window.

34. Select the **Open** button from the **WFSAPrep 04** window. See figure 25.

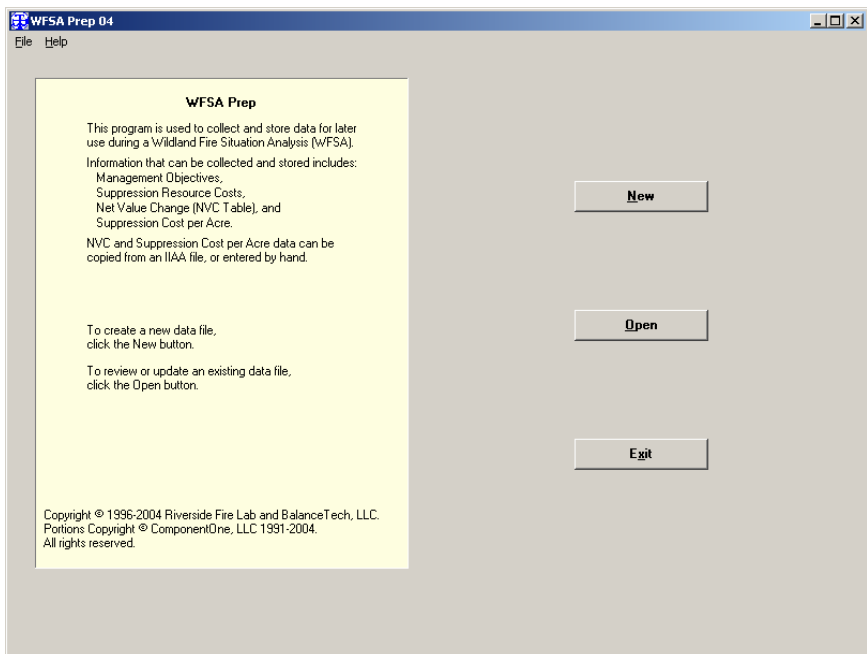


Figure 25. WFSAPrep 04 window.

35. Click the **Cancel** button on the **Open WFSA Prep File** window. See figure 26.

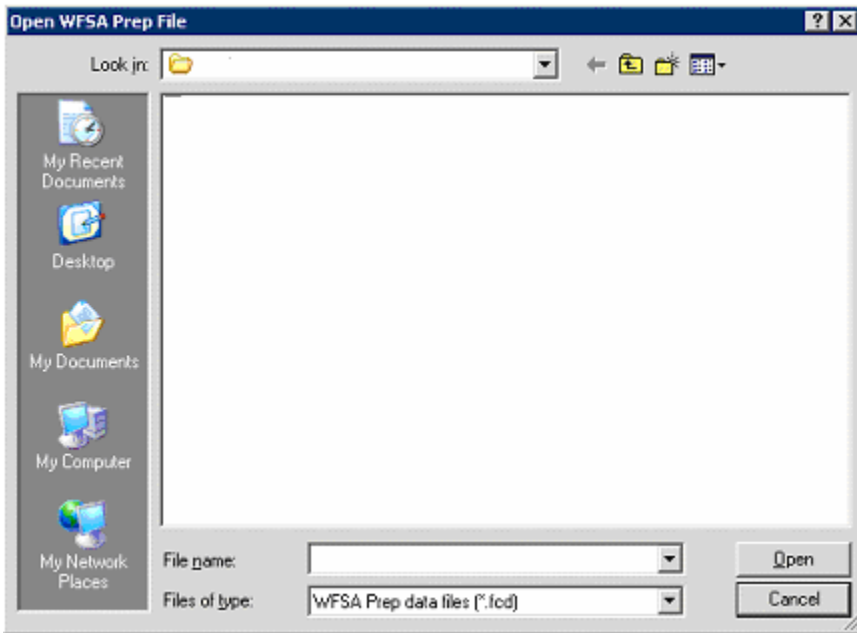


Figure 26. Open WFSA Prep File window.

36. Click the **New** button on the **WFSA Prep 04** window. See figure 27.

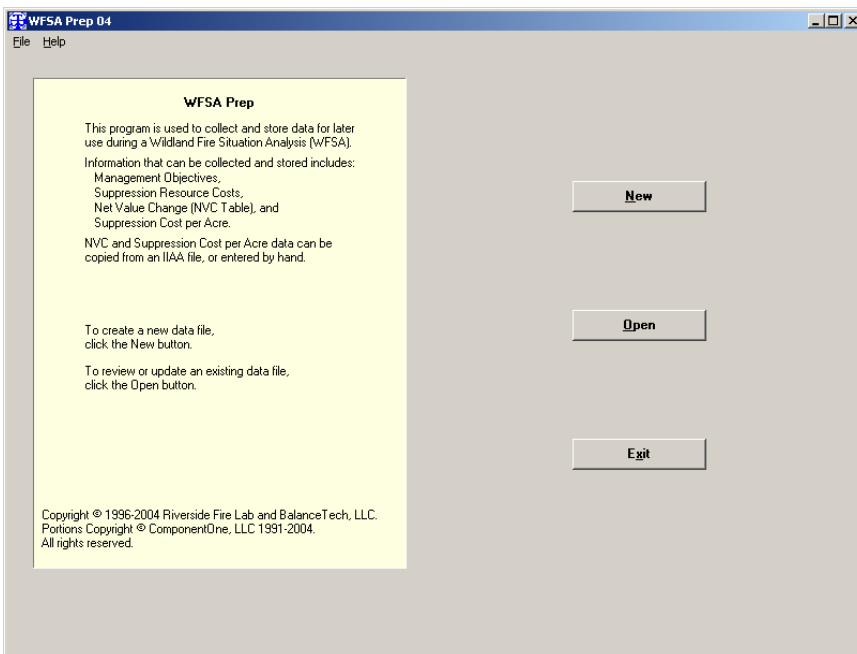


Figure 27. WFSA Prep 04 window.

37. Enter **C** in the **ID** field in the **Name the WFSA Prep file** window. See figure 28.
The **Unit Name** pane is populated.

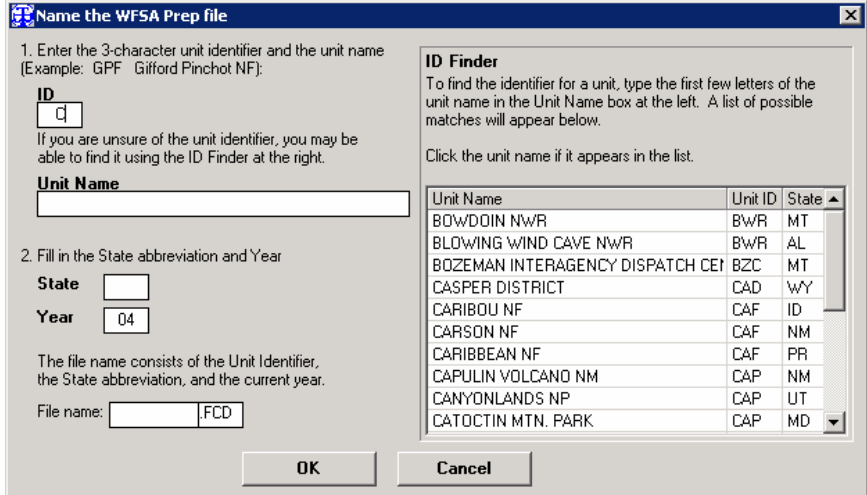


Figure 28. Name the WFSA Prep file window.

38. Select a unit from the **Unit Name** pane. Sections 1 and 2 are populated.
See figure 29.
Click the **OK** button.

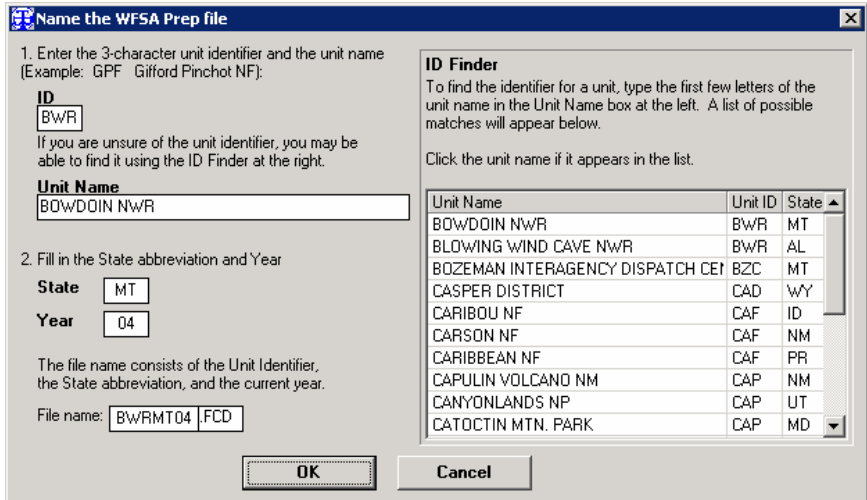


Figure 29. Name the WFSA Prep file window.

39. Select **Exit** from the **File** drop down menu on the **WFSA Prep: [<file name>] <Unit name> '04** window. See figure 30.

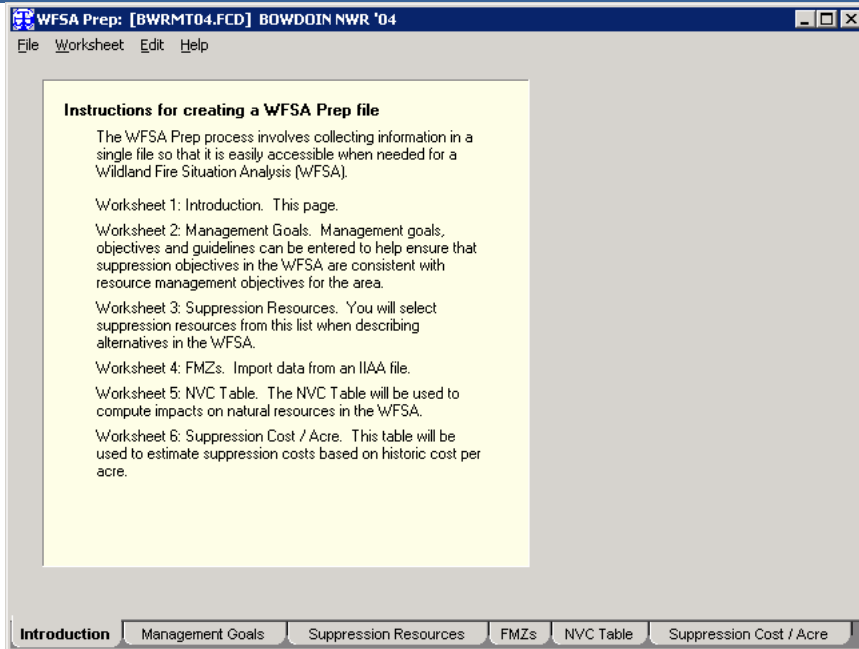


Figure 30. WFSA Prep: [<file name>] <Unit name> '04 window.

40. Log the user out of the workstation.
41. Log in with an account that has local admin rights to the workstation.
42. Right-click on **My Computer**, then click on **Manage**. The **Computer Management** window is displayed. See figure 31.
Double-click on **Local Users and Groups**.

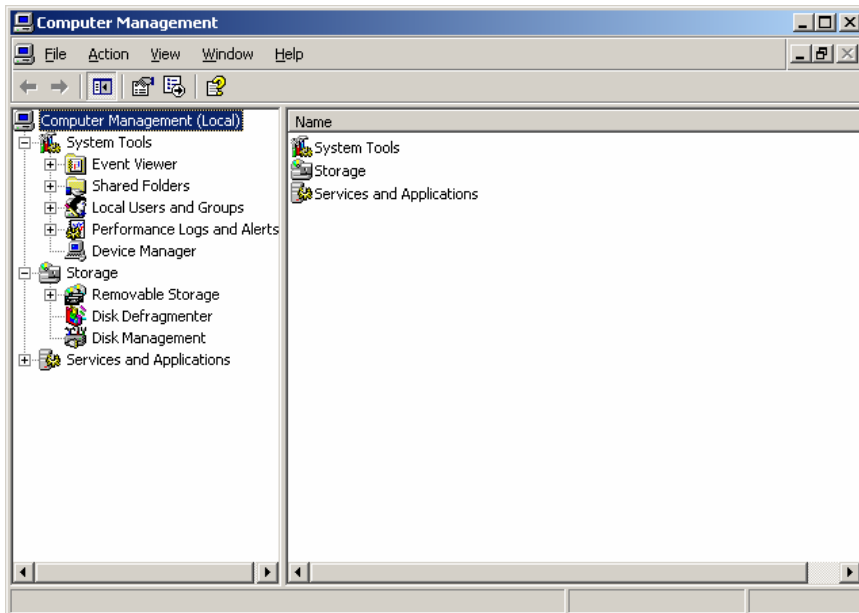


Figure 31. Computer Management window.

43. Double-click **Groups** in the **Computer Management** window. See figure 32.
 Double-click **Administrators** in the right section of the window.

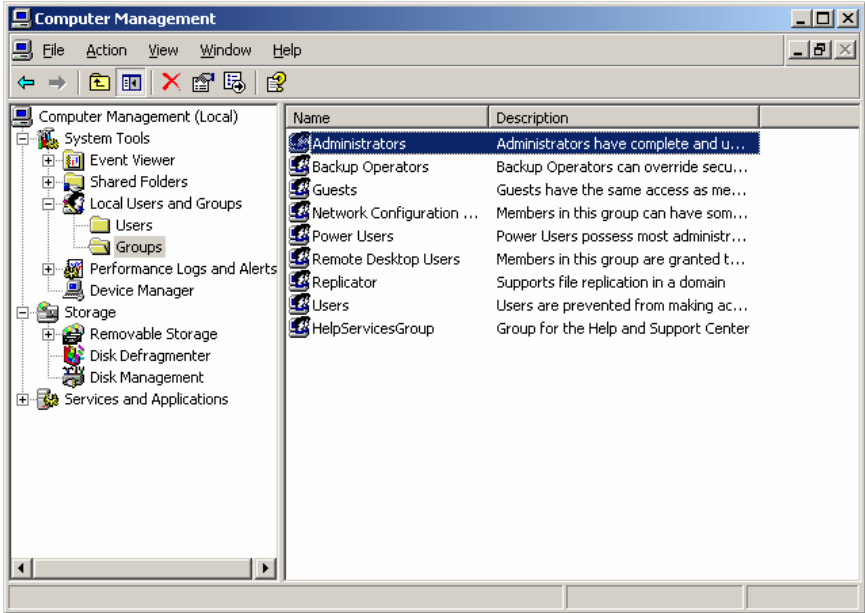


Figure 32. Computer Management window.

44. Select the user account in the **Administrators Properties** window that was previously added. See figure 33.
 Click the **Remove** button.
 Click the **OK** button.

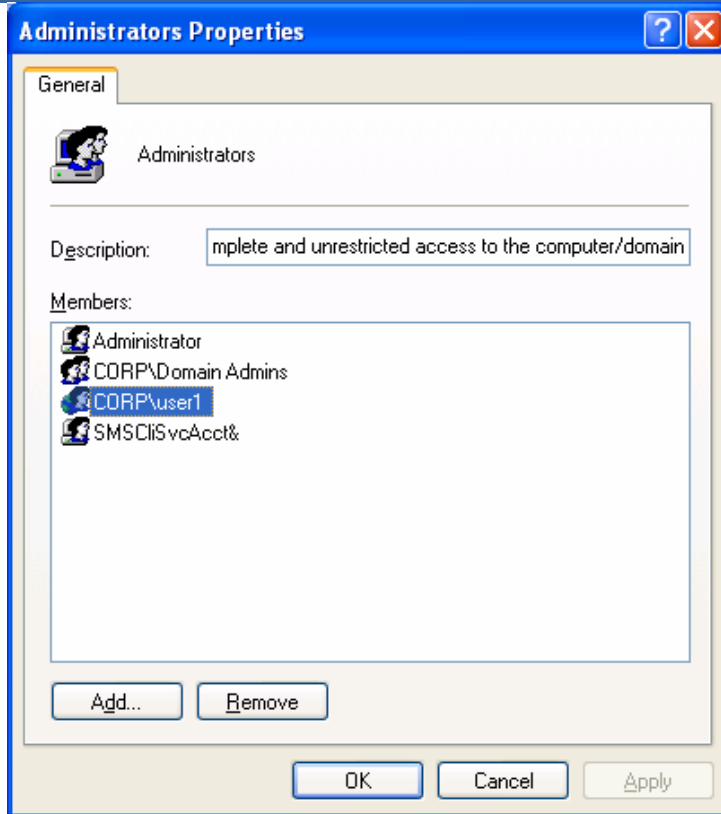


Figure 33. Administrators Properties window.

45. Close the **Computer Management** window.
46. Add "Authenticated Users" to the security permissions of the WFS directory tree within "Program Files". Once added, the "Authenticated Users" group must have privileges set for modify or full control which enables the application to write to the C:\Program Files\WFSAPlus directories as needed.
47. Log out of the computer.
48. Log into the computer using the user's login account (the same account that was previously added).
49. Open the WFS Plus program to perform the same tasks that were done previously (Opening and Saving a .WFS file, Exporting a file to .RTF format, and printing a .WFS file). Verify all functions continue to work for the user.