

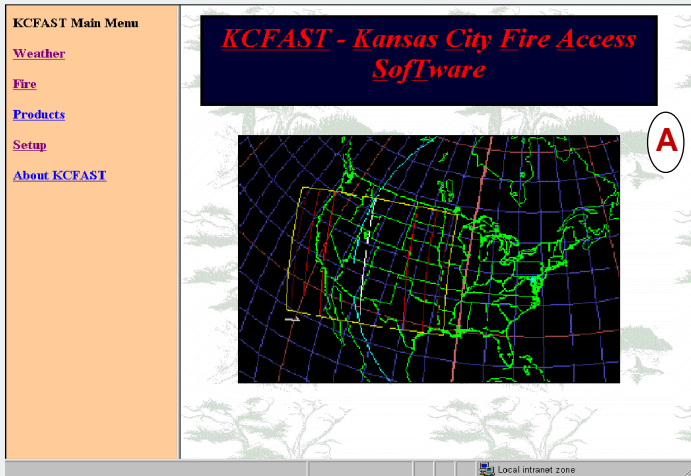
Retrieving data from KCFAST

Accessing KCFAST

To access KCFAST from the Internet

- 1 Start your Internet browser.
- 2 In the address box, type **http://famweb.nwcg.gov** and then press ENTER.
- 3 Click **KCFAST**.

Figure A shows the KCFAST Main Menu.



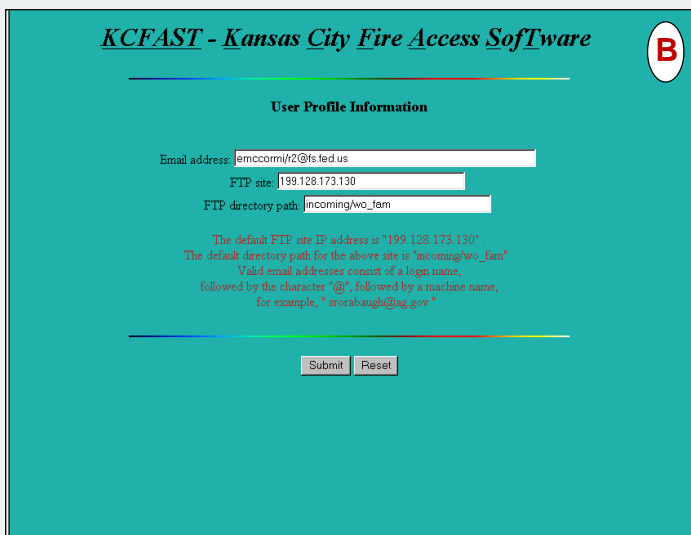
To setup your WIMS/NIFMID logon ID for KCFAST retrievals

- 1 From the **KCFAST Main Menu**, click **Setup**.
- 2 Type your **Username** and **Password**, and then click **OK**.

Your Username is in the format:
ops\$[WIMS/NIFMID logon id] For example,
ops\$fs1234 is a valid Username.

- 3 Type your **Email address**, and then click **Submit**.

Figure B shows the User Profile Information screen and a sample Email address.

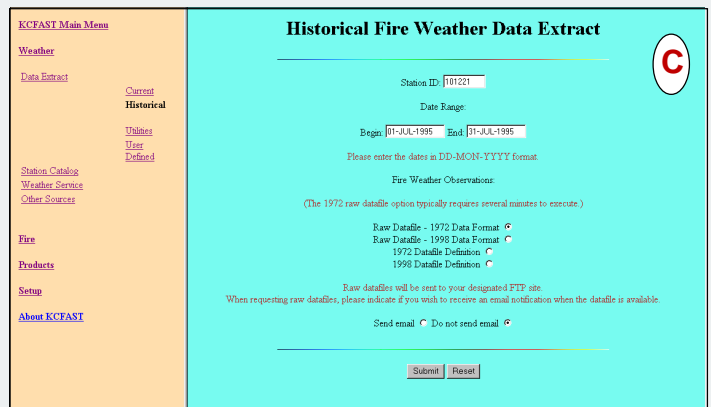


Retrieving weather data and station catalogs

To retrieve historical fire weather data from KCFAST

- 1 From the **KCFAST Main Menu**, click **Weather**.
- 2 Click **Data Extract**, and then click **Historical**.
- 3 Type the **Station ID**, and then **Begin** and **End Date Range**.
- 4 Click **Raw Datafile - 1972 Data Format**.
- 5 Select the email notification option of your choice, click **Submit**, then write down the file name.

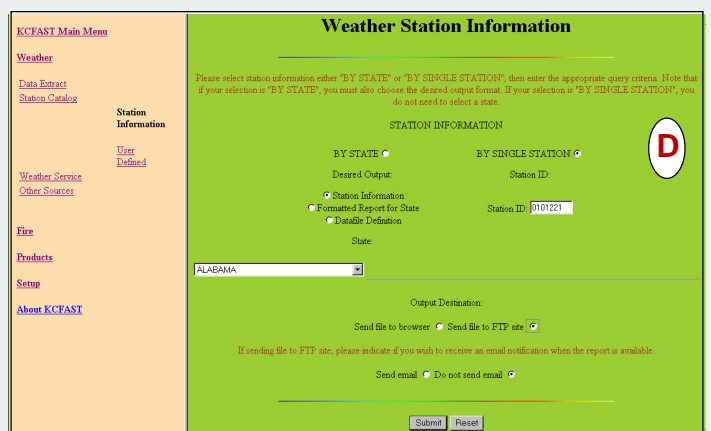
Figure C shows the Historical Fire Weather Data Extract screen.



To retrieve station catalog information for a single station

- 1 From the **KCFAST Main Menu**, click **Weather**.
- 2 Click **Station Catalog**, and then click **Station Information**.
- 3 Click **BY SINGLE STATION**, type the desired **Station ID**, and then click **Send file to FTP site**.
- 5 Select the email notification option of your choice, and then click **Submit**.
- 6 Write down the file name so that you can locate it when you access **ftp.fs.fed.us**.

Figure D shows the Weather Station Information screen.



Importing data into FireFamily Plus

Downloading files

To download a file from ftp.fs.fed.us

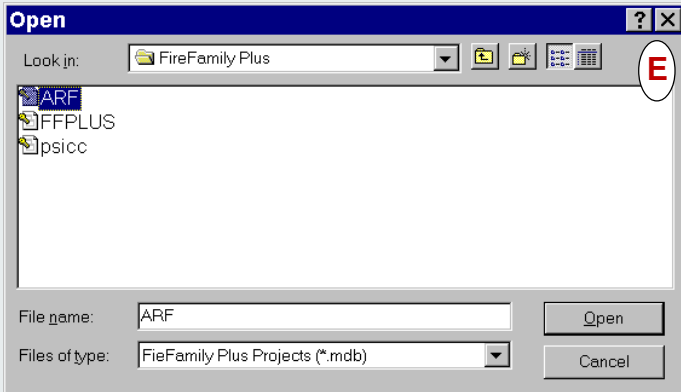
- 1 Start your Internet browser.
- 2 In the address box, type **ftp://ftp2.fs.fed.us/incoming/wo_fam** and then press Enter.
- 3 Right-click the file name of your choice, click **Copy to folder**, and then double-click the folder of your choice.

Importing data into FireFamily Plus

To create and save a new database

- 1 Start **FireFamily Plus**, and then click **New** on the **File** menu.
- 2 In the **File** name box, type the name of your new database, and then click **Save**.

Figure E shows the New FireFamily Plus Database dialog box.



To import a station catalog

- 1 On the **Data** menu, click **Import**.
- 2 Click **WIMS Station Catalogs**, and then double-click the station catalog file of your choice.
- 3 When finished, click **Close**, and then click **Close** on the **Import Fire and Weather Data** dialog box.
- 4 To review the station catalog, click **Stations** on the **Data** menu, click the station ID of your choice, and then click **Edit**.

Figure F shows the Import Fire and Weather Data dialog box.

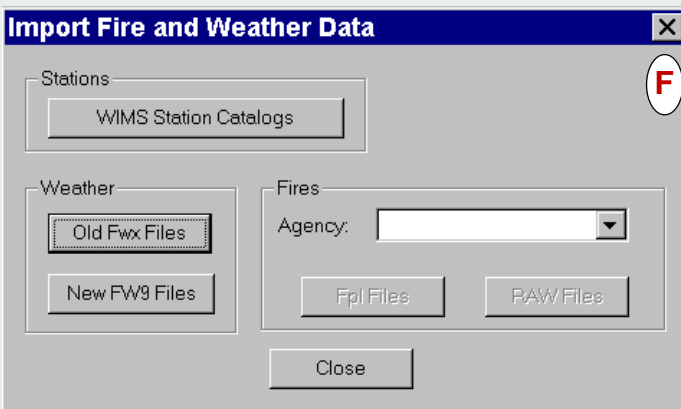


Figure G shows the Weather Stations dialog box that lists all station catalogs available in your working set database.

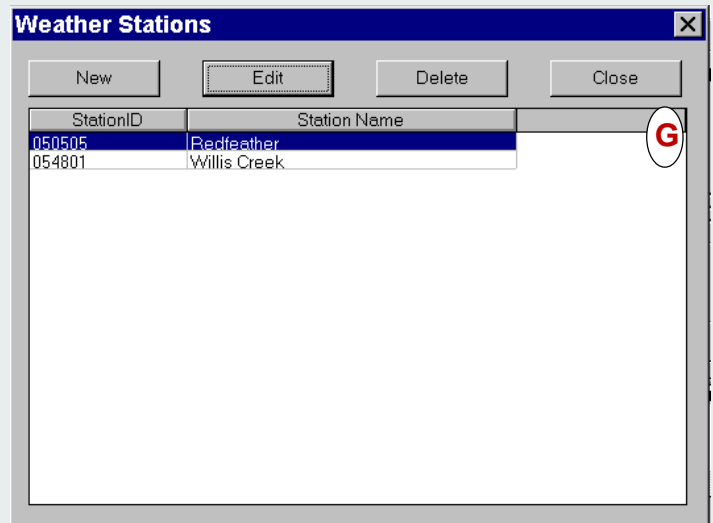
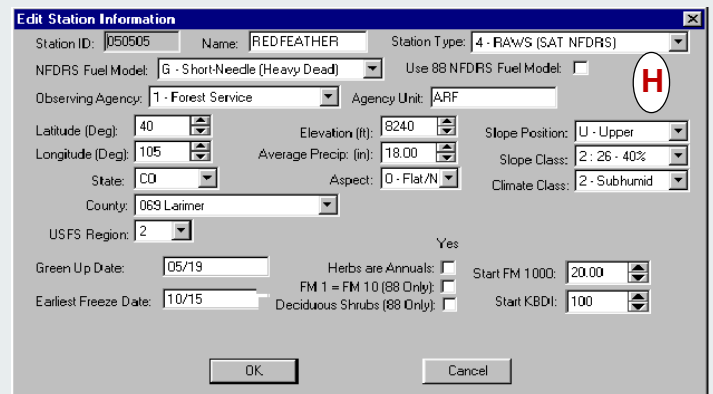


Figure H shows the Edit Station Information screen where you can review the station catalog.



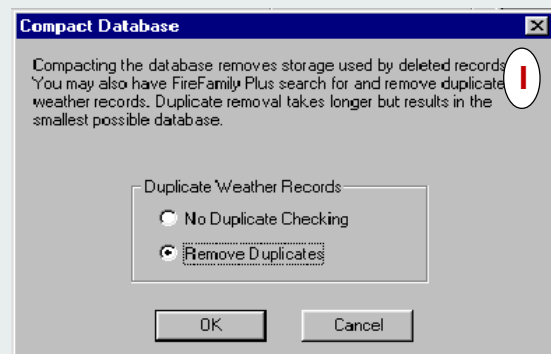
To import historical fire weather data

- 1 On the **Data** menu, click **Import**.
- 2 Click **Old Fwx Files**, and then double-click the historical fire weather data file of your choice.

To compact the database - remove duplicates

- 1 On the **Data** menu, click **Compact**.
- 2 Select the **Duplicate Weather Records** option of your choice, and then click **OK**.

Figure I shows the Compact Database dialog box.



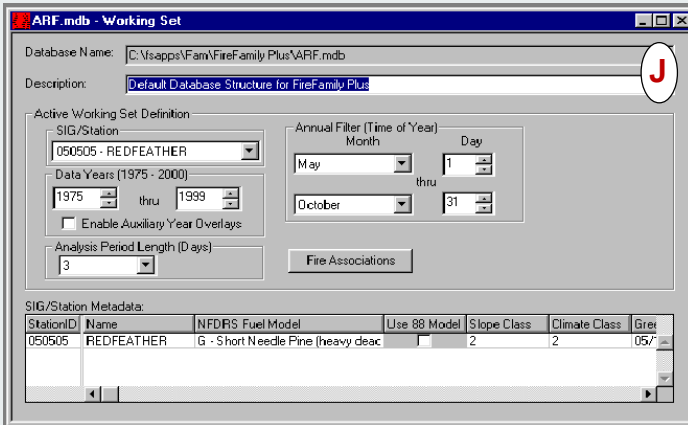
Generating reports in FireFamily Plus

Defining an active working set

To define the Active Working Set

- 1 Under **SIG/Station** on the **Working Set** screen, select the station ID of your choice.
- 2 Review and change the following fields as needed:
 - **Data Years**
 - **Annual Filter Month and Day**
 - **Analysis Period Length.**

Figure J shows the Active Working Set Definition for station 050505.

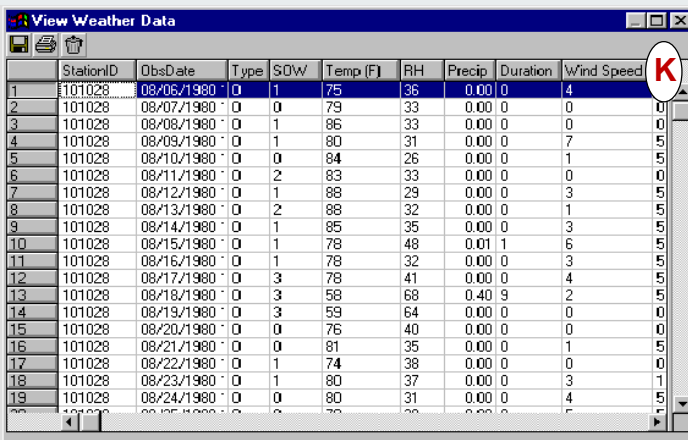


Reviewing weather data

To review weather observations

- On the **Weather** menu, point to **View Observations**, and then click **All**.

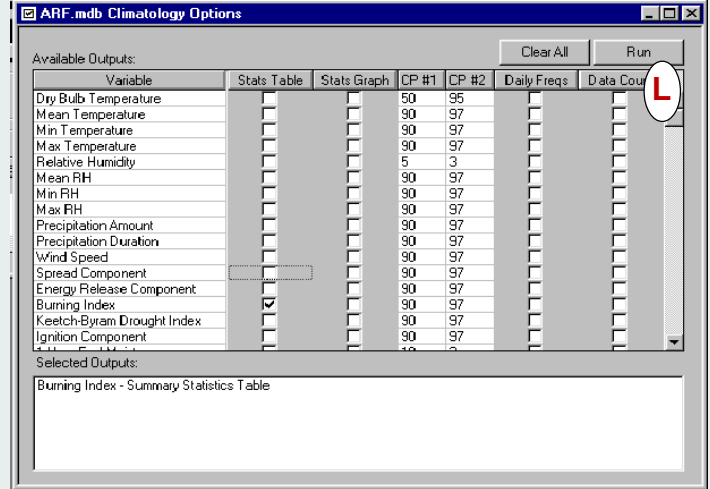
Figure K shows the View Weather Data Screen that lists weather observations.



To generate a statistical table

- 1 On the **Weather** menu, click **Climatology**.
- 2 Select the **Stats Table** check boxes of your choice, and then click **Run**.

Figure L shows the Climatology Options dialog box. The Stats Table "Burning Index" is selected.

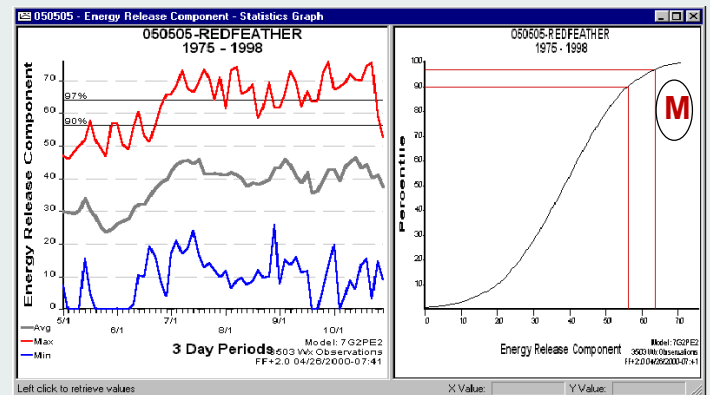


The CP #1 and CP #2 columns identify the critical percentiles that are used when you generate statistical tables. CP #1 and CP #2 are also used when generating percentile graphs, daily frequencies, and pocket cards.

To generate a statistical graph

- 1 On the **Weather** menu, click **Climatology**.
- 2 Select the **Stats Graph** check boxes of your choice, and then click **Run**.

Figure M shows a resulting statistics graph and weather percentile graph for Energy Release Component. The Analysis Period Length is 3 days.



To create an overlay for a statistical graph

- 1 On the **Options** menu, click **Overlays**.
- 2 Click **New**, then select the **Year**, **Line Style**, and **Color** for the overlay.
- 3 To review the appearance of the overlay, click **Apply**.
- 4 When finished adding new overlays, click **OK**.

To create an overlay from a data year that is outside the working set, you must select the **Enable Auxiliary Year Overlays** check box on the **Active Working Set** screen.

How do I do that?

Appending new weather data

To determine Begin Date and retrieve new weather data

- 1 Start **FireFamily Plus**, and then select the database of your choice.
- 2 On the Weather menu, point to **View Observations**, and then click **All**.
- 3 Scroll down to the last observation, and then write down the last **ObsDate**.

*The next consecutive day will be the **Begin Date** of your KCFAST - weather observation retrieval, as outlined in step 7 below.*

- 4 Minimize your **FireFamily Plus** session.
- 5 Start your Internet browser, type <http://famweb.usda.gov> in the address box, and then click **KCFAST**.
- 6 From the **KCFAST Main Menu**, click **Weather**, click **Data Extract**, and then click **Historical**.
- 7 Type the **Station ID**, **Begin** and **End Date Range**, and then click **Raw Datafile - 1972 Data Format**.
- 8 Select the email notification option of your choice, click **Submit**, write down the file name, and then exit **KCFAST**.

To append the new weather data to an existing Working Set

- 1 Start your Internet browser, type ftp://ftp.fs.fed.us/incoming/wo_fam in the address box, and then press Enter.
- 2 Right-click the file name of your choice, click **Copy to folder**, and then double-click the folder of your choice.
- 3 Maximize your **FireFamily Plus** session.
- 4 On the **Data** menu, click **Import**.
- 5 Click **Old Fwx Files**, and then double-click the historical fire weather data file of your choice.
- 6 To review the weather observations, point to **View Observations** on the **Weather** menu, and then click **All**.
- 7 To compact the database and remove duplicates, click **Compact** on the **Data** menu, select the **Remove Duplicates**, and then click **OK**.

Need more help?

To obtain a copy of the FireFamily Plus User's Guide

- 1 Start your Internet browser, type <http://www.fs.fed.us/fire/planning/nist> in the address box, and then press ENTER.
- 2 Click **Distribution**, and then click **Fire Family Plus User's Guide**.

To contact the National F&AM helpdesk

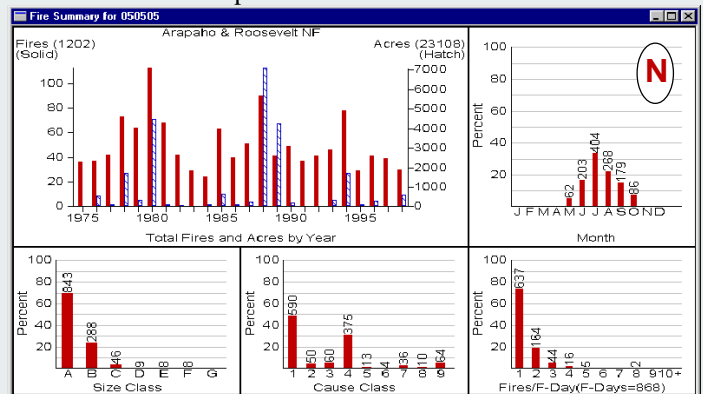
- Call 1-800-253-5559 or email fire_help@dms.nwcg.gov

Generating a pocket card

To determine the years of interest for comparison

- 1 On the **File** menu, click **Open**, and then select the database of your choice.
- 2 Edit the **Data Years** to include all available years of data.
- 3 Edit the **Annual Filter** to include the entire fire season.
- 4 On the **FireFamily Plus** toolbar, click **Fire Summary Working Set**.

Figure N shows the Fire Summary for the Redfeather weather station. Based on this graph, 1988 and 1989 have significant burned acres and are therefore selected as the "Years to Remember" for the pocket card.



To generate a pocket card

- 1 On the **FireFamily Plus** toolbar, click **Pocket Card**.
- 2 Type or select **Fire Danger Rating Area**, **Fire Danger Index**, and **Years to Remember**.
- 3 To select a fire for comparison, click **Search** in the appropriate **Fires** list, and then double-click the fire of your choice on the **Select a Fire** listing.
- 4 Type or select the **Area Locator Bullets** and **Local Thresholds**.
- 5 Type **Past Experience Text**. Include information specific to this area as well as any general and key points to remember.
- 6 When finished, click **OK**.

Figure O shows a sample pocket card.

