



U. S. DEPARTMENT OF THE INTERIOR
OFFICE OF SURFACE MINING
RECLAMATION AND ENFORCEMENT
DIRECTIVES SYSTEM

Subject Number:

AML-12

Transmittal Number:

413

Date:

1/22/88

Subject:

Coordination with the Bureau of Mines Abandoned Mine Land Reclamation Research Program

Approval:

Jed J. Christensen

Title: Director

1. Purpose: This directive provides guidance and outlines procedures and responsibilities for implementing the Office of Surface Mining Reclamation and Enforcement's (OSMRE) coordination with the Bureau of Mines/Abandoned Mine Lands (AML) Reclamation Research Program. Provisions for coordination between OSMRE and the Bureau of Mines (BOM) are set forth in the Memorandum of Understanding between the BOM and OSMRE as amended January 16, 1987.
2. Definitions and Abbreviations.
 - a. Coordinator - An individual appointed by the Director to represent and serve as principal liaison for OSMRE on the BOM interagency coordination committee. That person will be responsible for coordinated input by OSMRE to the BOM/AML research program, including input from the Assistant Directors for Field Operations.
 - b. HQRC - Headquarters Research Coordinator appointed by the Assistant Director, Program Policy, to coordinate research policy issues with the Coordinator and to coordinate OSMRE's pre-Fiscal Year (FY) 1987 AML research activities.
 - c. WFORC - Western Field Operations Research Coordinator appointed by the Assistant Director, Western Field Operations, to coordinate western AML research interests with the Coordinator and to provide WFO reviews of research proposals to the Coordinator.
 - d. EFORC - Eastern Field Operations Research Coordinator appointed by the Assistant Director, Eastern Field Operations, to coordinate eastern AML research interests with the Coordinator and to provide EFO reviews of research proposals to the Coordinator.
3. Policy/Procedures.
 - a. Policy. It is the policy of OSMRE to support the AML research program conducted by the BOM through the provision of technical support to the BOM and to make recommendations with respect to OSMRE research priorities.

b. Responsibilities.

(1) The Coordinator is responsible for:

- (a) Coordination of AML research program activities with the BOM. Coordinator responsibilities include obtaining from E/WFORC and submitting to BOM: OSMRE priority needs for AML research studies, proposed revisions to project selection criteria, reviews of project reports, and other OSMRE inputs requested by BOM.
- (b) Maintaining close liaison with the E/WFORC on the status of decisions made by the BOM concerning the program.
- (c) Maintaining liaison with the HQRC concerning policy considerations for AML research.

(2) The HQRC is responsible for:

- (a) Coordinating issues relating to AML research which may have nationwide policy implications.
- (b) Coordinating OSMRE's pre-FY 1987 AML research activities.

(3) The EFORC and WFORC will be responsible for:

- (a) Coordinating OSMRE AML research program activities within their respective field operations offices. Whenever a BOM request for program input is received from the Coordinator, it will be the responsibility of the E/WFORC's to canvass appropriate personnel in the field operations offices for technical opinions and comments relative to the subject(s) required. The E/WFORC's shall then formulate responses to the Coordinator that will represent the collective viewpoint of their respective field operations offices.
- (b) Evaluating research proposals requiring OSMRE input to the Bureau of Mines. Annually, the Coordinator will send to the WFORC and EFORC copies of proposals submitted to and by the Bureau of Mines. It will be the responsibility of the E/WFORC's to distribute these proposals within their offices to personnel having expertise within the subject areas of the proposals for review, according to rating criteria provided by the BOM. E/WFORC's will evaluate these internal reviews and rank the proposals by priority of importance of the research to meeting the needs of their respective eastern/western interests. The E/WFORC will submit the reviews and rankings to the Coordinator for presentation at the BOM proposal evaluation panel meeting.

(c) Provide technical staff to review the progress reports of BOM projects.

4. Reporting Requirements. None.

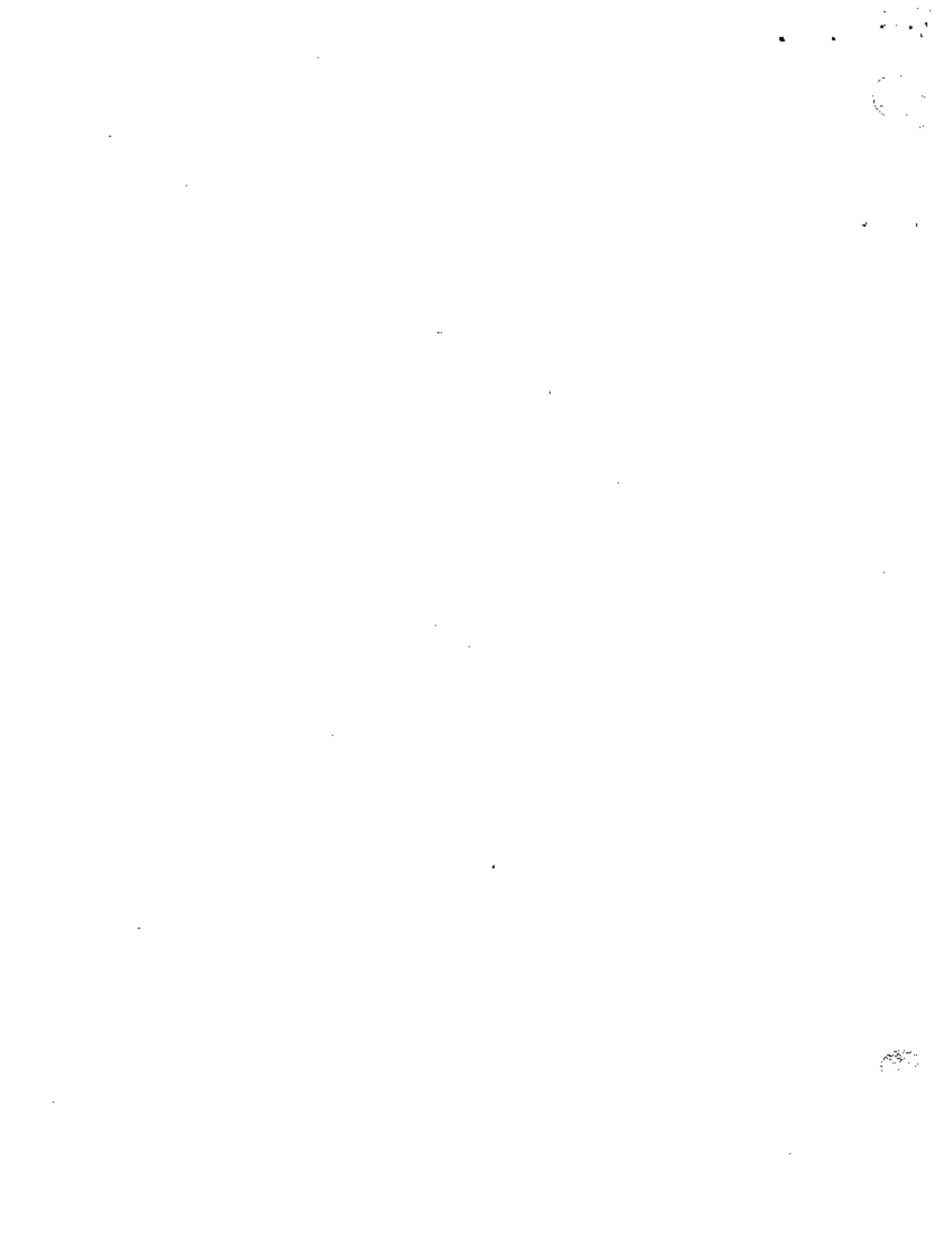
5. Reference.

a. Amendment to the Memorandum of Understanding between the Bureau of Mines and the Office of Surface Mining Reclamation and Enforcement signed by the Director on January 16, 1987.

6. Effect on other Documents. None.

7. Effective Date. Upon issuance .

8. Contact. Division of Abandoned Mine Land Reclamation (202) 343-5365.



AMENDMENT TO THE
MEMORANDUM OF UNDERSTANDING
BETWEEN THE
BUREAU OF MINES
AND THE
OFFICE OF SURFACE MINING RECLAMATION AND ENFORCEMENT

This amendment to the existing Memorandum of Understanding between the Bureau of Mines (BOM) and the Office of Surface Mining Reclamation and Enforcement (OSMRE) is for the purpose of defining Abandoned Mine Reclamation Research activity coordination.

I. Background

The Congress of the United States, in the continuing resolution for Federal agencies for fiscal year 1987, has directed that authority to conduct Abandoned Mine Reclamation Research activities as authorized by P.L. 95-87, Section 401(c)(6) shall be transferred from OSMRE to BOM beginning in FY 87. The Congress has provided the necessary appropriations to BOM for the purposes of conducting the research.

II. Purpose

The purpose of this amendment is to set forth the organizational mechanisms and necessary liaison for coordination of the Abandoned Mine Reclamation Research activities between BOM and OSMRE.

III. Scope and Responsibilities

It is agreed by both parties that transfer of Abandoned Mine Reclamation Research activities applies to the FY 87 program and subsequent years when Congress appropriates research funds to BOM. Prior fiscal year(s) appropriations presently being administered by OSMRE will remain the responsibility of OSMRE.

As directed by the Congress, the BOM will administer and conduct Abandoned Mine Reclamation Research funded during FY 87 and subsequent appropriations made to BOM.

IV. Transfer of Personnel

It is agreed by both parties that consistent with the provisions of 5 U.S.C. 1104 and the Civil Service Reform Act of 1978, OSMRE will designate one employee with experience in the Abandoned Mine Reclamation Research program for transfer to BOM.

V. Coordination

OSMRE will designate an individual to be on the interagency coordination committee that BOM will establish pursuant to the FY 87 continuing resolution.


That person will be responsible for coordinated input by OSMRE, to include input from the Assistant Directors for Field Operations as required by the appropriations language. Any input from OSMRE concerning an ongoing or proposed project will be relayed to BOM through this designated individual. BOM and OSMRE will hold annual program review meetings to ensure coordination of the program and that technology developed in the research program is transferred to industry.

VI. Reports

BOM will provide OSMRE with 20 copies of final project reports when the research is completed and the final report is approved by the Director of the BOM.

VII. Site Visits


If OSMRE personnel want to visit BOM project sites, visits will be scheduled with the prior knowledge and consent of the BOM Technical Project Officer and the concurrence of the Chief, Division of Mining Technology, Washington, D.C.



Director
Bureau of Mines

Date

1/14/87



Director
Office of Surface Mining
Reclamation and Enforcement

Date

1-16-87