

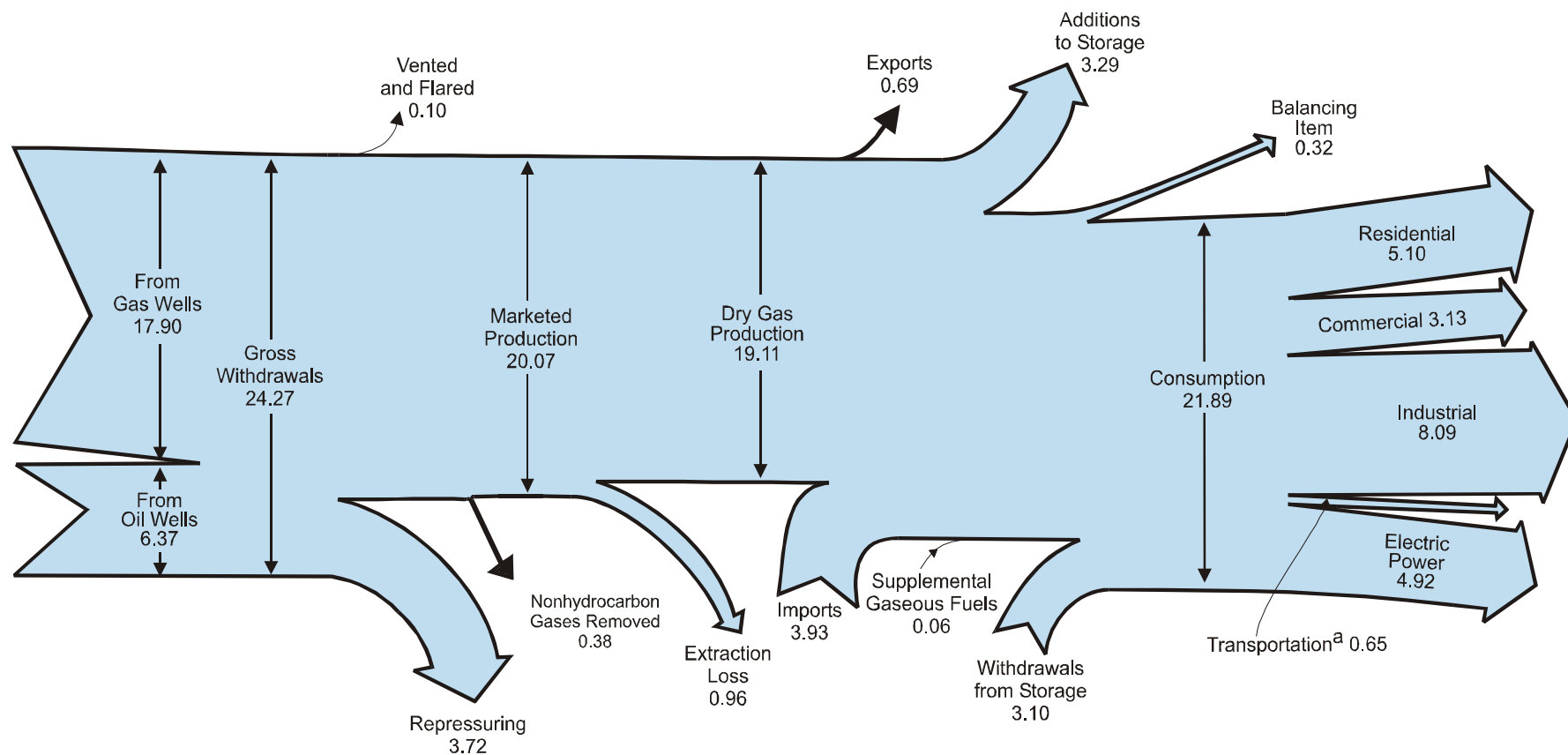
6

Natural Gas



Natural gas pipeline, El Paso County, Texas. Source: U.S. Department of Energy.

Diagram 3. Natural Gas Flow, 2003
(Trillion Cubic Feet)



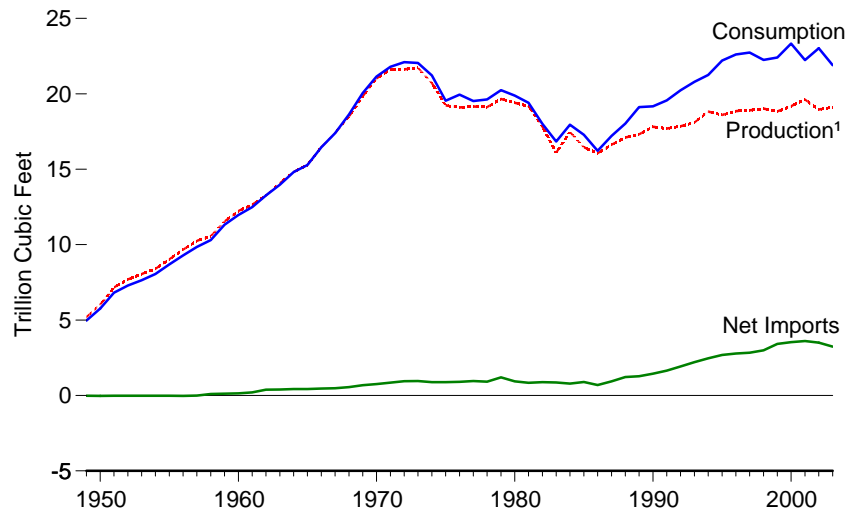
^a Natural gas consumed in the operation of pipelines, primarily in compressors, and a small quantity used as vehicle fuel.

Notes: • Data are preliminary. • Totals may not equal sum of components due to independent rounding.

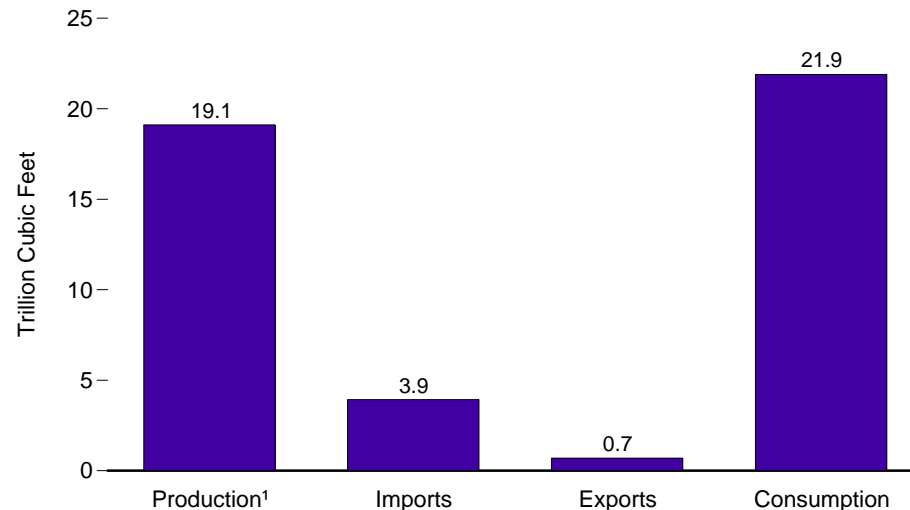
Sources: Tables 6.1, 6.2, and 6.5.

Figure 6.1 Natural Gas Overview

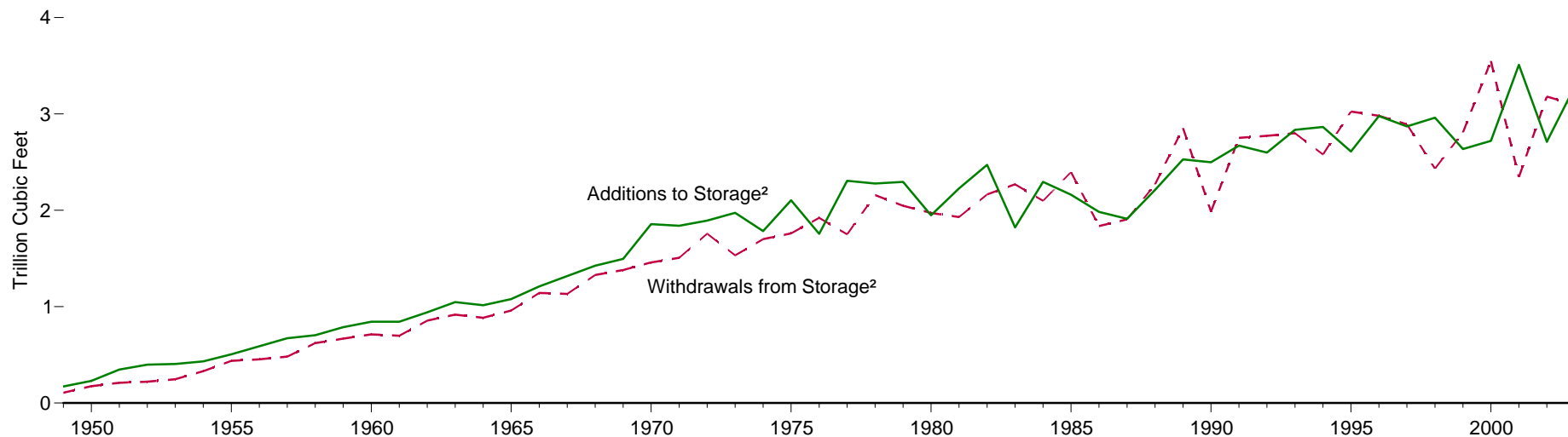
Overview, 1949-2003



Overview, 2003



Storage Additions and Withdrawals, 1949-2003



¹ Dry gas.

² For all years, includes underground storage; for 1980-2002, also includes liquefied natural gas stored in above-ground tanks.

Note: Because vertical scales differ, graphs should not be compared.

Source: Table 6.1.

Table 6.1 Natural Gas Overview, Selected Years, 1949-2003
(Billion Cubic Feet)

Year	Dry Gas Production	Supplemental Gaseous Fuels	Trade			Storage ¹ Activity			Balancing Item ⁴	Consumption
			Imports	Exports	Net Imports ²	Withdrawals	Additions	Net Withdrawals ³		
1949	5,195	NA	0	20	-20	106	172	-66	-139	4,971
1950	6,022	NA	0	26	-26	175	230	-54	-175	5,767
1955	9,029	NA	11	31	-20	437	505	-68	-247	8,694
1960	12,228	NA	156	11	144	713	844	-132	-274	11,967
1965	15,286	NA	456	26	430	960	1,078	-118	-319	15,280
1970	21,014	NA	821	70	751	1,459	1,857	-398	-228	21,139
1971	21,610	NA	935	80	854	1,508	1,839	-332	-339	21,793
1972	21,624	NA	1,019	78	941	1,757	1,893	-136	-328	22,101
1973	21,731	NA	1,033	77	956	1,533	1,974	-442	-196	22,049
1974	20,713	NA	959	77	882	1,701	1,784	-84	-289	21,223
1975	19,236	NA	953	73	880	1,760	2,104	-344	-235	19,538
1976	19,098	NA	964	65	899	1,921	1,756	165	-216	19,946
1977	19,163	NA	1,011	56	955	1,750	2,307	-557	-41	19,521
1978	19,122	NA	966	53	913	2,158	2,278	-120	-287	19,627
1979	19,663	NA	1,253	56	1,198	2,047	2,295	-248	-372	20,241
1980	19,403	155	985	49	936	1,972	1,949	23	-640	19,877
1981	19,181	176	904	59	845	1,930	2,228	-297	-500	19,404
1982	17,820	145	933	52	882	2,164	2,472	-308	-537	18,001
1983	16,094	132	918	55	864	2,270	1,822	447	-703	16,835
1984	17,466	110	843	55	788	2,098	2,295	-197	-217	17,951
1985	16,454	126	950	55	894	2,397	2,163	235	-428	17,281
1986	16,059	113	750	61	689	1,837	1,984	-147	-493	16,221
1987	16,621	101	993	54	939	1,905	1,911	-6	-444	17,211
1988	17,103	101	1,294	74	1,220	2,270	2,211	59	-453	18,030
1989	17,311	107	1,382	107	1,275	2,854	2,528	326	101	⁵ 19,119
1990	17,810	123	1,532	86	1,447	1,986	2,499	-513	307	⁵ 19,174
1991	17,698	113	1,773	129	1,644	2,752	2,672	80	27	⁵ 19,562
1992	17,840	118	2,138	216	1,921	2,772	2,599	173	176	⁵ 20,228
1993	18,095	119	2,350	140	2,210	2,799	2,835	-36	401	20,790
1994	18,821	111	2,624	162	2,462	2,579	2,865	-286	139	21,247
1995	18,599	110	2,841	154	2,687	3,025	2,610	415	396	22,207
1996	18,854	109	2,937	153	2,784	2,981	2,979	2	860	22,609
1997	18,902	103	2,994	157	2,837	2,894	2,870	24	871	22,737
1998	19,024	102	3,152	159	2,993	2,432	2,961	-530	657	22,246
1999	18,832	98	3,586	163	3,422	2,808	2,636	172	-119	22,405
2000	19,182	90	3,782	244	3,538	3,550	2,721	829	^R -306	^R 23,333
2001	^R 19,616	86	3,977	373	3,604	2,344	^R 3,510	-1,166	^R 99	^R 22,239
2002	^R 18,964	^R 68	^R 4,015	516	^R 3,499	^R 3,180	^R 2,712	469	^R 18	^R 23,018
2003 ^P	19,106	65	3,928	692	3,236	3,095	3,288	-193	-320	21,894

¹ For all years, includes underground storage; for 1980-2002, also includes liquefied natural gas stored in above-ground tanks.

² Net imports equal imports minus exports. Minus sign indicates exports are greater than imports.

³ Net withdrawals equal withdrawals minus additions. Minus sign indicates additions are greater than withdrawals.

⁴ Quantities lost and imbalances in data due to differences among data sources. Since 1980, excludes intransit shipments that cross the U.S.-Canada border (i.e., natural gas delivered to its destination via the other country).

⁵ For 1989-1992, a small amount of consumption at independent power producers may be counted in both "Other Industrial" and "Electric Power Sector" on Table 6.5. See Note 1, "Natural Gas Deliveries to Nonutilities, 1989-1992" at end of section.

R=Revised. P=Preliminary. NA=Not available.

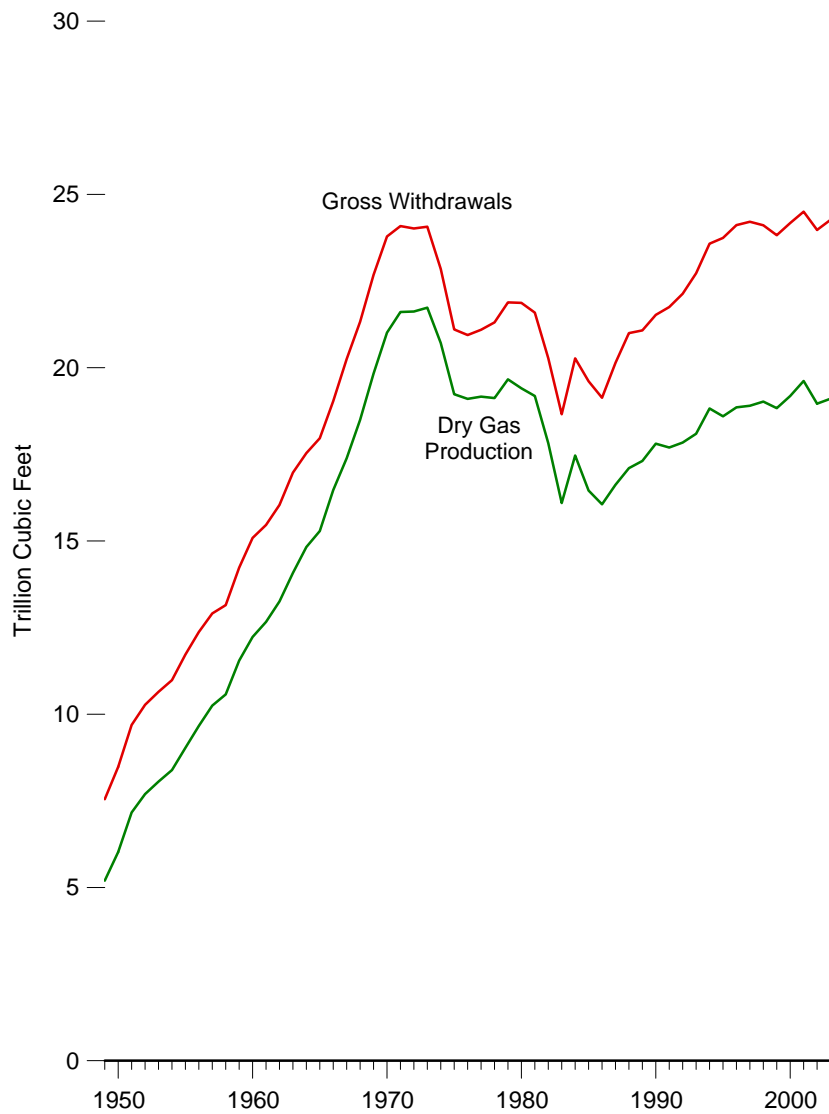
Notes: • Beginning with 1965, all volumes are shown on a pressure base of 14.73 p.s.i.a. at 60° F. For prior years, the pressure base was 14.65 p.s.i.a. at 60° F. • Totals may not equal sum of components due to independent rounding.

Web Pages: • For data not shown for 1951-1969, see <http://www.eia.doe.gov/emeu/aer/natgas.html>. • For related information, see http://www.eia.doe.gov/oil_gas/natural_gas/info_glance/natural_gas.html.

Sources: **Dry Gas Production:** Table 6.2. **Supplemental Gaseous Fuels:** • 1980-2002—Energy Information Administration (EIA), *Natural Gas Annual (NGA)*, annual reports. • 2003—EIA, *Natural Gas Monthly (NGM)* (March 2004), Table 2. **Trade:** Table 6.3. **Storage Activity:** • 1949-1997—EIA, *NGA 2000* (November 2001), Table 94. • 1998-2002—EIA, *NGA 2002* (January 2004), Table 1. • 2003—EIA, *NGM* (March 2004), Table 9. **Balancing Item:** Calculated as consumption minus dry gas production, supplemental gaseous fuels, net imports, and net withdrawals. **Consumption:** Table 6.5.

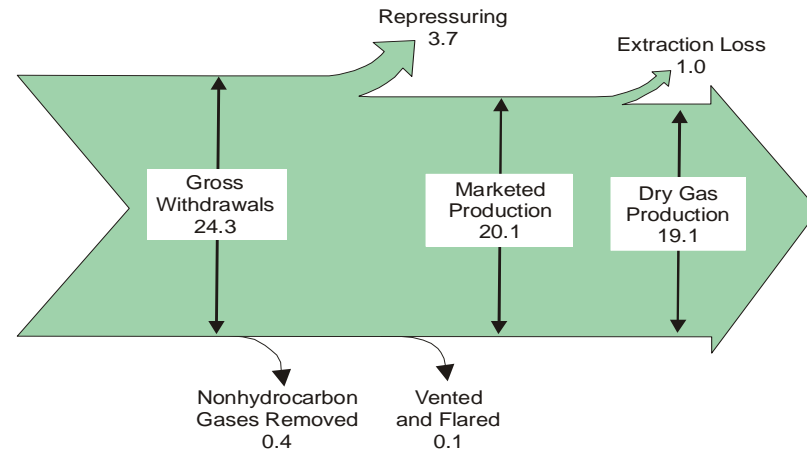
Figure 6.2 Natural Gas Production

Gross Withdrawals and Dry Gas Production, 1949-2003

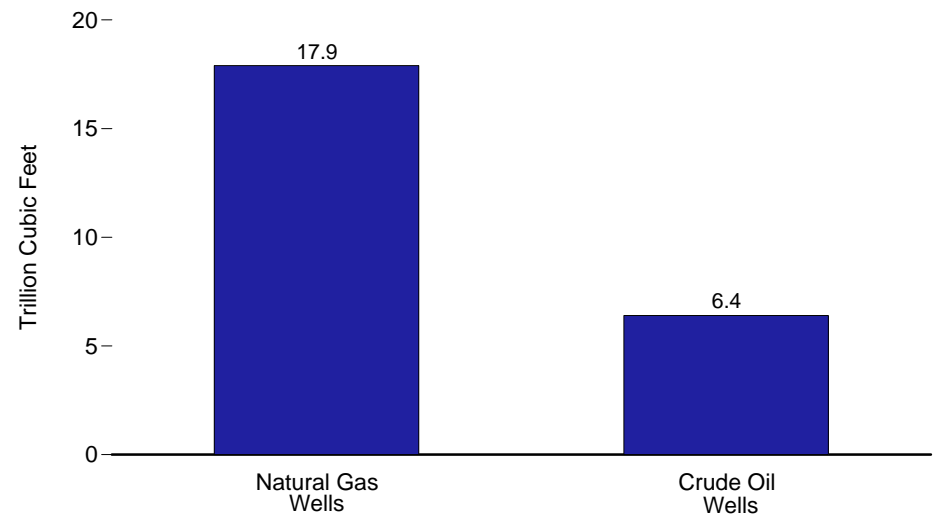


Note: Because vertical scales differ, graphs should not be compared.

Production Flow, 2003
(Trillion Cubic Feet)



Gross Withdrawals by Well Type, 2003



Source: Table 6.2.

Table 6.2 Natural Gas Production, Selected Years, 1949-2003
(Billion Cubic Feet)

Year	Natural Gas Gross Withdrawals			Repressuring	Nonhydrocarbon Gases Removed	Vented and Flared	Marketed Production	Extraction Loss ¹	Dry Gas Production
	Natural Gas Wells	Crude Oil Wells	Total						
1949	4,986	2,561	7,547	1,273	NA	854	5,420	224	5,195
1950	5,603	2,876	8,480	1,397	NA	801	6,282	260	6,022
1955	7,842	3,878	11,720	1,541	NA	774	9,405	377	9,029
1960	10,853	4,234	15,088	1,754	NA	563	12,771	543	12,228
1965	13,524	4,440	17,963	1,604	NA	319	16,040	753	15,286
1970	18,595	5,192	23,786	1,376	NA	489	21,921	906	21,014
1971	18,925	5,163	24,088	1,310	NA	285	22,493	883	21,610
1972	19,043	4,974	24,016	1,236	NA	248	22,532	908	21,624
1973	19,372	4,696	24,067	1,171	NA	248	22,648	917	21,731
1974	18,669	4,181	22,850	1,080	NA	169	21,601	887	20,713
1975	17,380	3,723	21,104	861	NA	134	20,109	872	19,236
1976	17,191	3,753	20,944	859	NA	132	19,952	854	19,098
1977	17,416	3,681	21,097	935	NA	137	20,025	863	19,163
1978	17,394	3,915	21,309	1,181	NA	153	19,974	852	19,122
1979	18,034	3,849	21,883	1,245	NA	167	20,471	808	19,663
1980	17,573	4,297	21,870	1,365	199	125	20,180	777	19,403
1981	17,337	4,251	21,587	1,312	222	98	19,956	775	19,181
1982	15,809	4,463	20,272	1,388	208	93	18,582	762	17,820
1983	14,153	4,506	18,659	1,458	222	95	16,884	790	16,094
1984	15,513	4,754	20,267	1,630	224	108	18,304	838	17,466
1985	14,535	5,071	19,607	1,915	326	95	17,270	816	16,454
1986	14,154	4,977	19,131	1,838	337	98	16,859	800	16,059
1987	14,807	5,333	20,140	2,208	376	124	17,433	812	16,621
1988	15,467	5,532	20,999	2,478	460	143	17,918	816	17,103
1989	15,709	5,366	21,074	2,475	362	142	18,095	785	17,311
1990	16,054	5,469	21,523	2,489	289	150	18,594	784	17,810
1991	16,018	5,732	21,750	2,772	276	170	18,532	835	17,698
1992	16,165	5,967	22,132	2,973	280	168	18,712	872	17,840
1993	16,691	6,035	22,726	3,103	414	227	18,982	886	18,095
1994	17,351	6,230	23,581	3,231	412	228	19,710	889	18,821
1995	17,282	6,462	23,744	3,565	388	284	19,506	908	18,599
1996	17,737	6,376	24,114	3,511	518	272	19,812	958	18,854
1997	17,844	6,369	24,213	3,492	599	256	19,866	964	18,902
1998	17,729	6,380	24,108	3,427	617	103	19,961	938	19,024
1999	17,590	6,233	23,823	3,293	615	110	19,805	973	18,832
2000	17,726	6,448	24,174	3,380	505	91	20,198	1,016	19,182
2001	^R 18,129	^R 6,371	^R 24,501	^R 3,371	^R 463	^R 97	^R 20,570	954	^R 19,616
2002	^R 17,728	^R 6,249	^R 23,977	^R 3,455	^R 502	^R 99	^R 19,921	^R 957	^R 18,964
2003	^E 17,896	^E 6,369	^P 24,265	^P 3,716	^P 385	^P 95	^P 20,070	^P 964	^P 19,106

¹ Volume reduction resulting from the removal of natural gas plant liquids. Natural gas plant liquids are transferred to petroleum supply.

R=Revised. P=Preliminary. E=Estimate. NA=Not available.

Notes: • Beginning with 1965 data, all volumes are shown on a pressure base of 14.73 p.s.i.a. at 60° F. For prior years, the pressure base was 14.65 p.s.i.a. at 60° F. • Totals may not equal sum of components due to independent rounding.

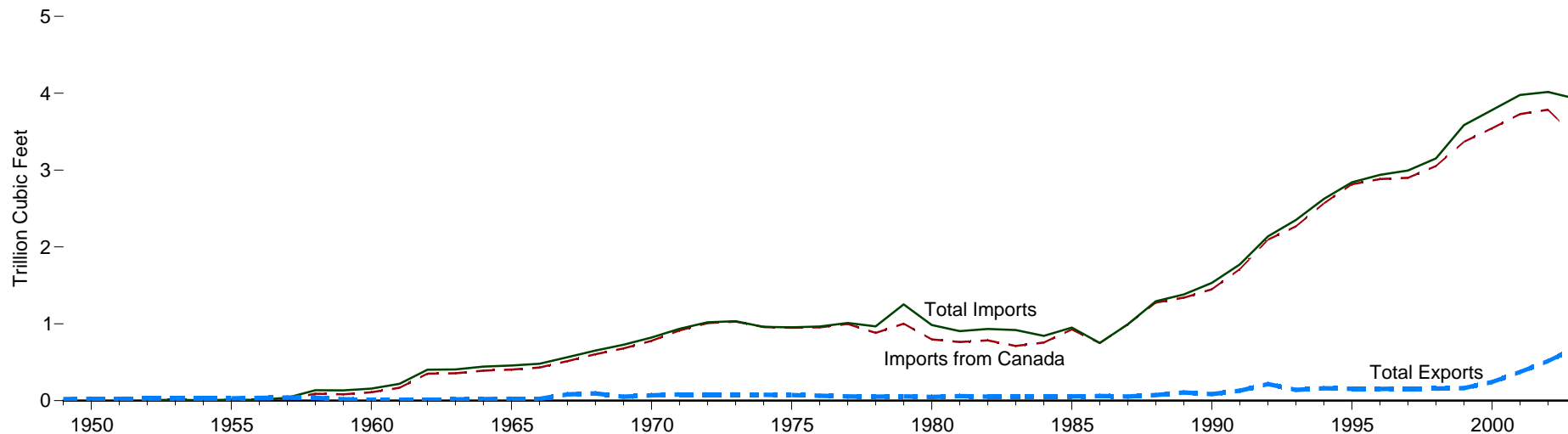
Web Pages: • For data not shown for 1951-1969, see <http://www.eia.doe.gov/emeu/aer/natgas.html>.

• For related information, see http://www.eia.doe.gov/oil_gas/natural_gas/info_glance/natural_gas.html.

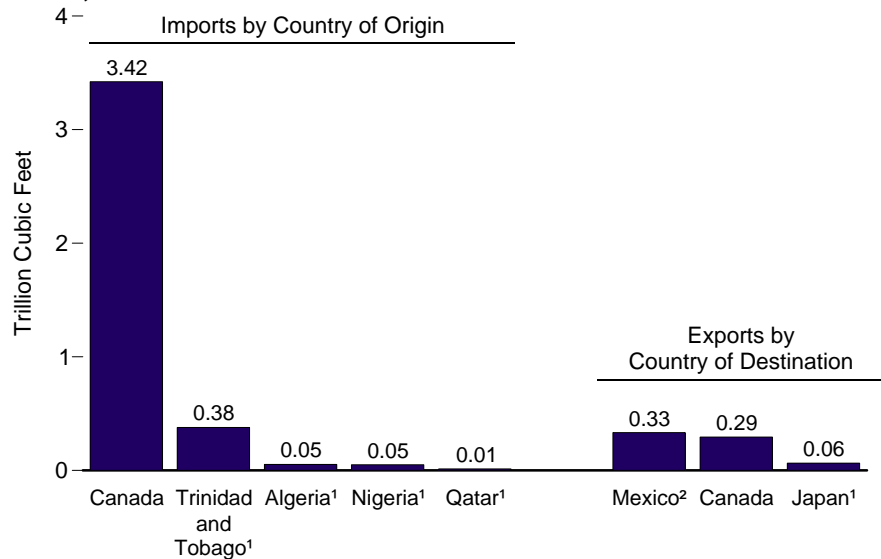
Sources: **Natural Gas Wells and Crude Oil Wells:** • 1949-1966—Bureau of Mines, *Minerals Yearbook*, "Natural Gas" chapter. • 1967-1997—Energy Information Administration (EIA), *Natural Gas Annual (NGA)*, annual reports. • 1998-2002—EIA, *NGA 2002* (January 2004), Table 1. • 2003—EIA estimates. **All Other Data:** • 1949-1997—EIA, *NGA 2000* (November 2001), Table 93. • 1998 forward—EIA, *Natural Gas Monthly* (March 2004), Table 1.

Figure 6.3 Natural Gas Imports, Exports, and Net Imports

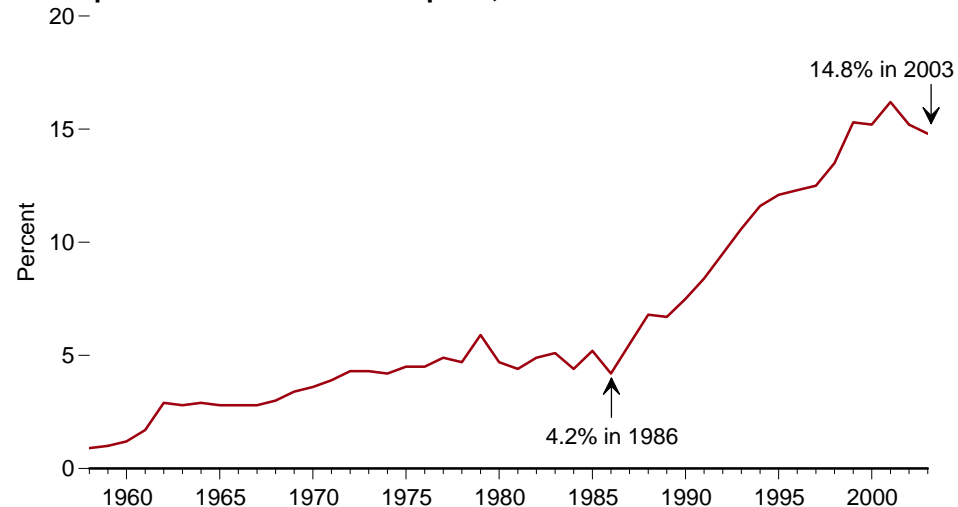
Trade Overview, 1949-2003



Trade, 2003



Net Imports as Share of Consumption, 1958-2003



¹ Liquefied natural gas.
² Pipeline and liquefied natural gas.

Note: Because vertical scales differ, graphs should not be compared.
 Source: Table 6.3.

Table 6.3 Natural Gas Imports, Exports, and Net Imports, Selected Years, 1949-2003
(Billion Cubic Feet, Except as Noted)

Year	Imports by Country of Origin									Exports by Country of Destination				Net Imports ¹	
	Algeria ²	Australia ²	Canada ³	Mexico ³	Nigeria ²	Oman ²	Qatar ²	Trinidad and Tobago ²	Total ⁴	Canada ³	Japan ²	Mexico ³	Total	Total	Percent of U.S. Consumption
1949	0	0	0	0	0	0	0	0	0	(s)	0	20	20	-20	(⁵)
1950	0	0	0	0	0	0	0	0	0	3	0	23	26	-26	(⁵)
1955	0	0	11	(s)	0	0	0	0	11	11	0	20	31	-20	(⁵)
1960	0	0	109	47	0	0	0	0	156	6	0	6	11	144	1.2
1965	0	0	405	52	0	0	0	0	456	18	0	8	26	430	2.8
1970	1	0	779	41	0	0	0	0	821	11	44	15	70	751	3.6
1971	1	0	912	21	0	0	0	0	935	14	50	16	80	854	3.9
1972	2	0	1,009	8	0	0	0	0	1,019	16	48	15	78	941	4.3
1973	3	0	1,028	2	0	0	0	0	1,033	15	48	14	77	956	4.3
1974	0	0	959	(s)	0	0	0	0	959	13	50	13	77	882	4.2
1975	5	0	948	0	0	0	0	0	953	10	53	9	73	880	4.5
1976	10	0	954	0	0	0	0	0	964	8	50	7	65	899	4.5
1977	11	0	997	2	0	0	0	0	1,011	(s)	52	4	56	955	4.9
1978	84	0	881	0	0	0	0	0	966	(s)	48	4	53	913	4.7
1979	253	0	1,001	0	0	0	0	0	1,253	(s)	51	4	56	1,198	5.9
1980	86	0	797	102	0	0	0	0	985	(s)	45	4	49	936	4.7
1981	37	0	762	105	0	0	0	0	904	(s)	56	3	59	845	4.4
1982	55	0	783	95	0	0	0	0	933	(s)	50	2	52	882	4.9
1983	131	0	712	75	0	0	0	0	918	(s)	53	2	55	864	5.1
1984	36	0	755	52	0	0	0	0	843	(s)	53	2	55	788	4.4
1985	24	0	926	0	0	0	0	0	950	(s)	53	2	55	894	5.2
1986	0	0	749	0	0	0	0	0	750	9	50	2	61	689	4.2
1987	0	0	993	0	0	0	0	0	993	3	49	2	54	939	5.5
1988	17	0	1,276	0	0	0	0	0	1,294	20	52	2	74	1,220	6.8
1989	42	0	1,339	0	0	0	0	0	1,382	38	51	17	107	1,275	6.7
1990	84	0	1,448	0	0	0	0	0	1,532	17	53	16	86	1,447	7.5
1991	64	0	1,710	0	0	0	0	0	1,773	15	54	60	129	1,644	8.4
1992	43	0	2,094	0	0	0	0	0	2,138	68	53	96	216	1,921	9.5
1993	82	0	2,267	2	0	0	0	0	2,350	45	56	40	140	2,210	10.6
1994	51	0	2,566	7	0	0	0	0	2,624	53	63	47	162	2,462	11.6
1995	18	0	2,816	7	0	0	0	0	2,841	28	65	61	154	2,687	12.1
1996	35	0	2,883	14	0	0	0	0	2,937	52	68	34	153	2,784	12.3
1997	66	10	2,899	17	0	0	0	0	2,994	56	62	38	157	2,837	12.5
1998	69	12	3,052	15	0	0	0	0	3,152	40	66	53	159	2,993	13.5
1999	76	12	3,368	55	0	0	20	51	3,586	39	64	61	163	3,422	15.3
2000	47	6	3,544	12	13	10	46	99	3,782	73	66	106	244	3,538	^R 15.2
2001	65	2	3,729	10	38	12	23	98	3,977	167	66	141	373	3,604	16.2
2002	27	0	^R 3,785	2	8	3	35	151	^R 4,015	189	63	263	516	^R 3,499	^R 15.2
2003 ^P	53	0	3,421	0	50	9	14	378	3,928	294	64	333	692	3,236	14.8

¹ Net imports equal imports minus exports.

² As liquefied natural gas.

³ By pipeline, except for very small amounts of liquefied natural gas imported from Canada in 1973, 1977, and 1981 and exported to Mexico beginning in 1998.

⁴ Included in the total but not shown separately are liquefied natural gas imports from Indonesia in 1986 and 2000; United Arab Emirates in 1996-2000; Malaysia in 1999, 2002, and 2003; and Brunei in 2002.

⁵ Not meaningful because there were net exports during this year.

R=Revised. P=Preliminary. (s)=Less than 0.5 billion cubic feet.

Note: Totals may not equal sum of components due to independent rounding.

Web Pages: • For data not shown for 1951-1969, see <http://www.eia.doe.gov/emeu/aer/natgas.html>.

• For related information, see http://www.eia.doe.gov/oil_gas/natural_gas/info_glance/natural_gas.html.

Sources: • 1949-1954—Energy Information Administration (EIA), Office of Oil and Gas, Reserves and Natural Gas Division, unpublished data. • 1955-1971—EIA, Federal Power Commission, by telephone.

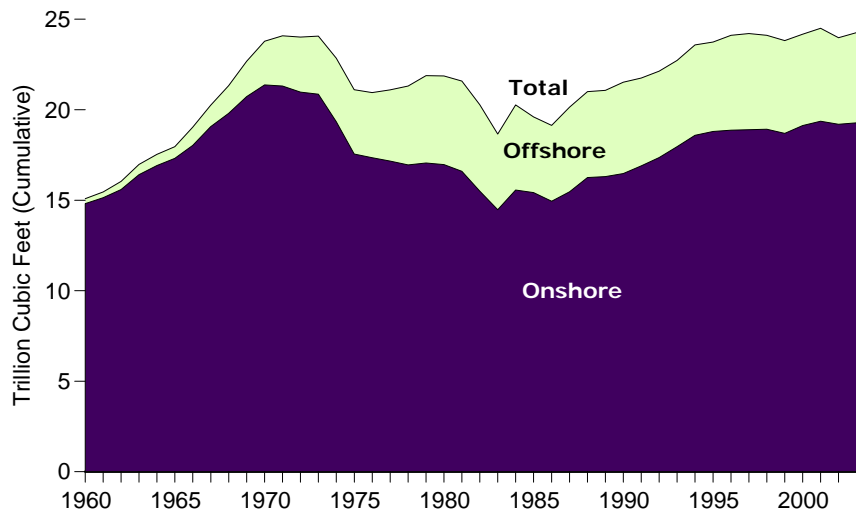
• 1972-1987—EIA, Form FPC-14, "Annual Report for Importers and Exporters of Natural Gas."

• 1988-1997—EIA, *Natural Gas Annual*, annual reports. • 1998 forward—EIA, *Natural Gas Monthly*

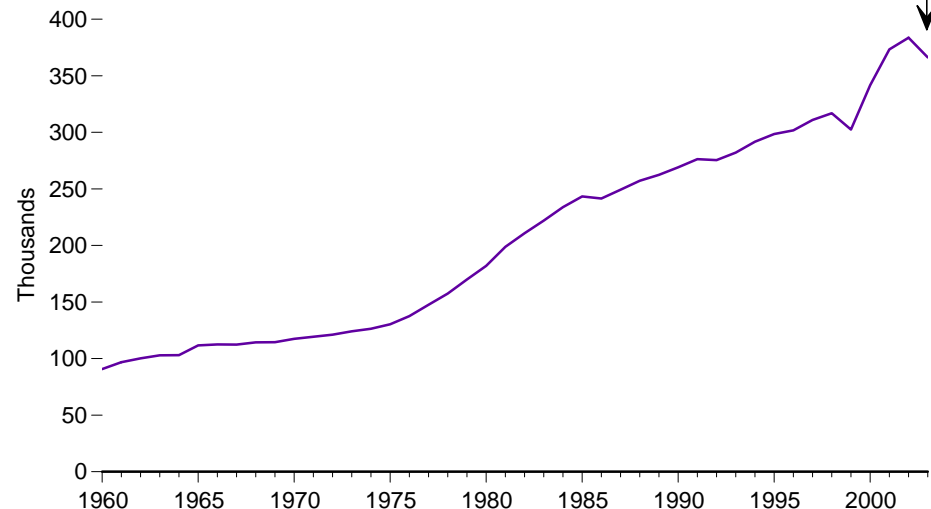
(March 2004), Tables 5 and 6.

Figure 6.4 Natural Gas Gross Withdrawals and Natural Gas Well Productivity, 1960-2003

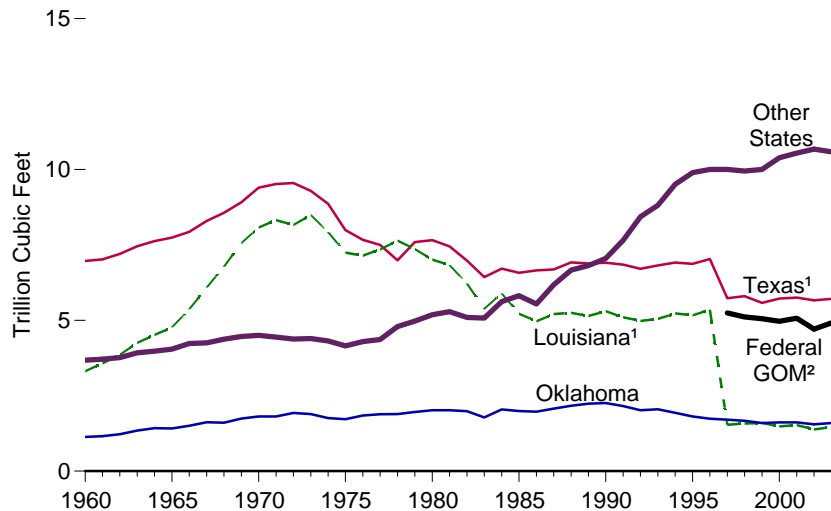
Gross Withdrawals by Location



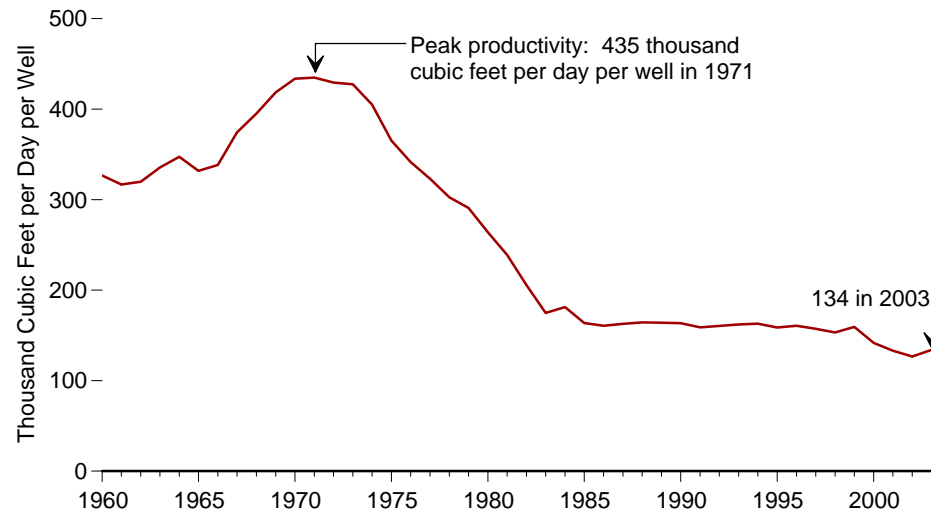
Number of Producing Wells



Gross Withdrawals by State and Federal Gulf of Mexico



Natural Gas Well Average Productivity



¹ Through 1996, includes gross withdrawals in Federal offshore areas of the Gulf of Mexico; beginning in 1997, these are included in "Federal Gulf of Mexico."

² Gulf of Mexico.

Note: Because vertical scales differ, graphs should not be compared.
Source: Table 6.4.

Table 6.4 Natural Gas Gross Withdrawals and Natural Gas Well Productivity, 1960-2003

(Billion Cubic Feet, Except as Noted)

Year	Natural Gas Gross Withdrawals From Crude Oil and Natural Gas Wells								Natural Gas Well Productivity			
	State					Location			Total	Gross Withdrawals From Natural Gas Wells	Producing Wells ⁵ (thousands)	Average Productivity (thousand cubic feet per day)
	Texas ¹	Louisiana ¹	Oklahoma	Other States ¹	Federal Gulf of Mexico ²	Onshore ³	Offshore ⁴					
1960	6,965	3,313	1,133	3,677	(²)	14,815	273	15,088	10,853	91	326.7	
1961	7,020	3,571	1,160	3,710	(²)	15,142	318	15,460	11,195	97	316.8	
1962	7,199	3,854	1,222	3,764	(²)	15,587	452	16,039	11,702	100	319.8	
1963	7,452	4,250	1,347	3,924	(²)	16,409	564	16,973	12,606	103	335.4	
1964	7,622	4,515	1,423	3,975	(²)	16,914	622	17,536	13,106	103	347.4	
1965	7,741	4,764	1,414	4,044	(²)	17,318	646	17,963	13,524	112	331.8	
1966	7,935	5,365	1,502	4,232	(²)	18,026	1,007	19,034	13,894	112	338.4	
1967	8,292	6,087	1,621	4,252	(²)	19,065	1,187	20,252	15,345	112	374.3	
1968	8,566	6,778	1,607	4,375	(²)	19,801	1,524	21,325	16,540	114	395.1	
1969	8,915	7,561	1,742	4,462	(²)	20,725	1,954	22,679	17,489	114	418.6	
1970	9,399	8,076	1,811	4,501	(²)	21,368	2,419	23,786	18,595	117	433.6	
1971	9,519	8,319	1,809	4,442	(²)	21,311	2,777	24,088	18,925	119	434.8	
1972	9,550	8,160	1,928	4,378	(²)	20,978	3,039	24,016	19,043	121	429.4	
1973	9,290	8,491	1,890	4,396	(²)	20,856	3,212	24,067	19,372	124	427.4	
1974	8,859	7,920	1,757	4,314	(²)	19,335	3,515	22,850	18,669	126	404.9	
1975	7,989	7,242	1,721	4,152	(²)	17,555	3,549	21,104	17,380	130	365.3	
1976	7,666	7,143	1,842	4,293	(²)	17,348	3,596	20,944	17,191	138	341.5	
1977	7,496	7,351	1,888	4,362	(²)	17,165	3,932	21,097	17,416	148	323.1	
1978	6,988	7,639	1,892	4,790	(²)	16,953	4,356	21,309	17,394	157	302.7	
1979	7,594	7,359	1,958	4,973	(²)	17,061	4,822	21,883	18,034	170	290.8	
1980	7,656	7,008	2,019	5,187	(²)	16,967	4,902	21,870	17,573	182	263.8	
1981	7,452	6,830	2,019	5,287	(²)	16,597	4,991	21,587	17,337	199	238.9	
1982	6,976	6,217	1,985	5,094	(²)	15,499	4,773	20,272	15,809	211	205.5	
1983	6,429	5,379	1,780	5,071	(²)	14,477	4,182	18,659	14,153	222	174.7	
1984	6,712	5,888	2,046	5,620	(²)	15,560	4,707	20,267	15,513	234	181.2	
1985	6,577	5,218	1,993	5,818	(²)	15,421	4,186	19,607	14,535	243	163.6	
1986	6,656	4,965	1,972	5,538	(²)	14,945	4,186	19,131	14,154	242	160.6	
1987	6,688	5,205	2,073	6,174	(²)	15,468	4,672	20,140	14,807	249	162.8	
1988	6,919	5,248	2,167	6,665	(²)	16,253	4,747	20,999	15,467	257	164.3	
1989	6,881	5,143	2,237	6,813	(²)	16,303	4,771	21,074	15,709	262	164.0	
1990	6,907	5,303	2,258	7,054	(²)	16,476	5,047	21,523	16,054	269	163.4	
1991	6,846	5,100	2,154	7,651	(²)	16,900	4,850	21,750	16,018	276	158.8	
1992	6,708	4,977	2,017	8,429	(²)	17,361	4,772	22,132	16,165	275	160.4	
1993	6,817	5,047	2,050	8,812	(²)	17,960	4,766	22,726	16,691	282	162.1	
1994	6,912	5,226	1,935	9,508	(²)	18,585	4,996	23,581	17,351	292	162.9	
1995	6,873	5,163	1,812	9,896	(²)	18,802	4,942	23,744	17,282	299	158.6	
1996	7,028	5,351	1,735	9,999	(²)	18,867	5,246	24,114	17,737	302	160.6	
1997	^R 5,730	^R 1,538	1,704	^R 9,999	5,242	18,897	5,316	24,213	17,844	311	157.2	
1998	5,799	1,579	1,669	9,950	5,110	18,923	5,185	24,108	17,729	317	153.3	
1999	5,575	1,599	1,594	10,002	5,053	18,692	5,131	23,823	17,590	302	159.4	
2000	5,723	1,485	1,613	10,386	4,968	19,130	5,044	24,174	17,726	342	141.7	
2001	^R 5,752	^R 1,525	1,615	^R 10,542	^R 5,066	^R 19,364	^R 5,137	^R 24,501	^R 18,129	^R 373	^R 133.1	
2002	^R 5,661	^R 1,382	^R 1,551	^R 10,674	^R 4,709	^R 19,200	^R 4,777	^R 23,977	^R 17,728	^R 384	^R 126.6	
2003	^E 5,712	^E 1,464	^E 1,593	^E 10,582	^E 4,914	^E 19,279	^E 4,986	^P 24,265	^E 17,896	^E 366	^E 133.9	

¹ Through 1996, includes gross withdrawals in Federal offshore areas of the Gulf of Mexico; beginning in 1997, these are included in "Federal Gulf of Mexico."

² Gross withdrawals from Federal offshore areas of the Gulf of Mexico. Through 1996, these gross withdrawals are included in "Texas," "Louisiana," and "Other States."

³ Includes State offshore gross withdrawals.

⁴ Excludes State offshore gross withdrawals; includes Federal offshore (Outer Continental Shelf) gross withdrawals.

⁵ As of December 31 each year.

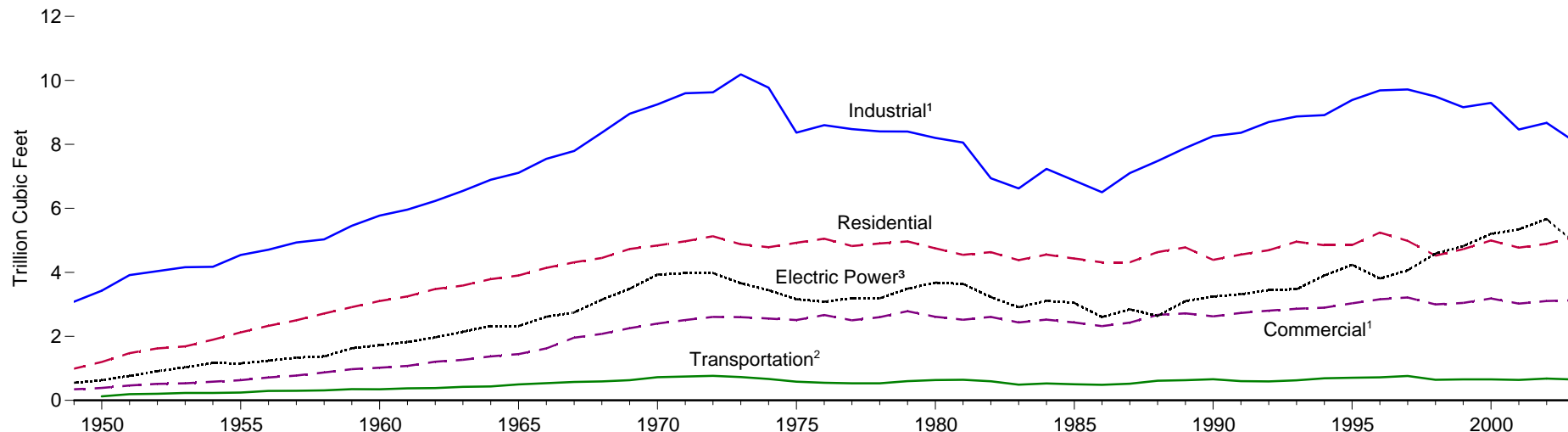
R=Revised. P=Preliminary. E=Estimate.

Web Page: See http://www.eia.doe.gov/oil_gas/natural_gas/info_glance/natural_gas.html for related information.

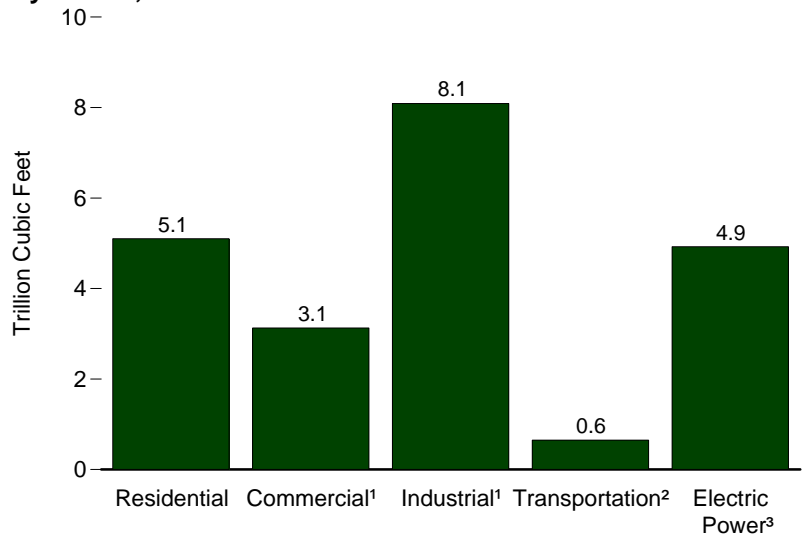
Sources: **Offshore:** • 1960-1981—U.S. Geological Survey. • 1982-1985—U.S. Minerals Management Service, *Mineral Revenues—The 1989 Report on Receipts from Federal and Indian Leases*, and predecessor annual reports. • 1986-1997—Energy Information Administration (EIA), *Natural Gas Annual (NGA)*, annual reports. • 1998-2002—EIA, *NGA 2002* (January 2004), Table 4. • 2003—EIA estimate. **Total (Gross Withdrawals):** • 1960-1997—EIA, *NGA 2000* (November 2001), Table 93. • 1998 forward—EIA, *Natural Gas Monthly* (March 2004), Table 1. **Average Productivity:** Calculated as gross withdrawals from natural gas wells divided by the number of producing wells, and then divided by the number of days in the year. **All Other Data:** • 1960-1966—Bureau of Mines, *Natural Gas Production and Consumption*. • 1967-2002—EIA, *NGA*, annual reports and unpublished revisions. • 2003—EIA estimates.

Figure 6.5 Natural Gas Consumption by Sector

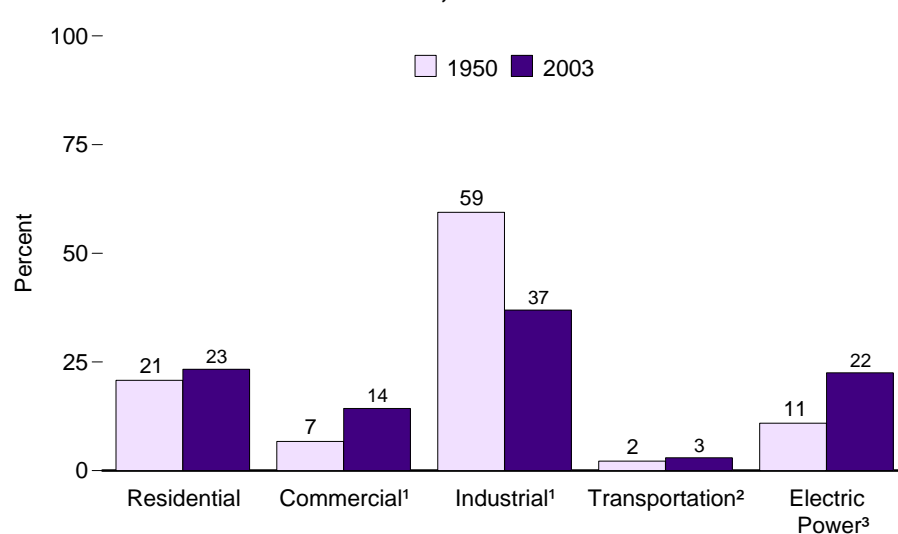
By Sector, 1949-2003



By Sector, 2003



End Use and Electric Power Shares, 1950 and 2003



¹ Includes combined-heat-and-power plants and a small number of electricity-only plants.

² Pipeline and vehicle fuel.

³ Electricity-only and combined-heat-and-power plants whose primary business is to sell electricity, or electricity and heat, to the public.

Source: Table 6.5.

Table 6.5 Natural Gas Consumption by Sector, Selected Years, 1949-2003
(Billion Cubic Feet)

Year	End-Use Sectors												Electric Power Sector ¹			Total	
	Residential	Commercial			Lease and Plant Fuel	Industrial			Total	Transportation			Total	Electricity Only	CHP		Total
		CHP ²	Other ³	Total		Other Industrial		Pipeline Fuel ⁶		Vehicle Fuel	Total						
						CHP ⁴	Non-CHP ⁵										
1949	993	(7)	348	348	835	(8)	2,245	2,245	3,081	NA	NA	NA	4,421	550	NA	550	4,971
1950	1,198	(7)	388	388	928	(8)	2,498	2,498	3,426	126	NA	126	5,138	629	NA	629	5,767
1955	2,124	(7)	629	629	1,131	(8)	3,411	3,411	4,542	245	NA	245	7,540	1,153	NA	1,153	8,694
1960	3,103	(7)	1,020	1,020	1,237	(8)	4,535	4,535	5,771	347	NA	347	10,242	1,725	NA	1,725	11,967
1965	3,903	(7)	1,444	1,444	1,156	(8)	5,955	5,955	7,112	501	NA	501	12,959	2,321	NA	2,321	15,280
1970	4,837	(7)	2,399	2,399	1,399	(8)	7,851	7,851	9,249	722	NA	722	17,208	3,932	NA	3,932	21,139
1971	4,972	(7)	2,509	2,509	1,414	(8)	8,181	8,181	9,594	743	NA	743	17,817	3,976	NA	3,976	21,793
1972	5,126	(7)	2,608	2,608	1,456	(8)	8,169	8,169	9,624	766	NA	766	18,125	3,977	NA	3,977	22,101
1973	4,879	(7)	2,597	2,597	1,496	(8)	8,689	8,689	10,185	728	NA	728	18,389	3,660	NA	3,660	22,049
1974	4,786	(7)	2,556	2,556	1,477	(8)	8,292	8,292	9,769	669	NA	669	17,780	3,443	NA	3,443	21,223
1975	4,924	(7)	2,508	2,508	1,396	(8)	6,968	6,968	8,365	583	NA	583	16,380	3,158	NA	3,158	19,538
1976	5,051	(7)	2,668	2,668	1,634	(8)	6,964	6,964	8,598	548	NA	548	16,866	3,081	NA	3,081	19,946
1977	4,821	(7)	2,501	2,501	1,659	(8)	6,815	6,815	8,474	533	NA	533	16,329	3,191	NA	3,191	19,521
1978	4,903	(7)	2,601	2,601	1,648	(8)	6,757	6,757	8,405	530	NA	530	16,439	3,188	NA	3,188	19,627
1979	4,965	(7)	2,786	2,786	1,499	(8)	6,899	6,899	8,398	601	NA	601	16,750	3,491	NA	3,491	20,241
1980	4,752	(7)	2,611	2,611	1,026	(8)	7,172	7,172	8,198	635	NA	635	16,196	3,682	NA	3,682	19,877
1981	4,546	(7)	2,520	2,520	928	(8)	7,128	7,128	8,055	642	NA	642	15,764	3,640	NA	3,640	19,404
1982	4,633	(7)	2,606	2,606	1,109	(8)	5,831	5,831	6,941	596	NA	596	14,776	3,226	NA	3,226	18,001
1983	4,381	(7)	2,433	2,433	978	(8)	5,643	5,643	6,621	490	NA	490	13,924	2,911	NA	2,911	16,835
1984	4,555	(7)	2,524	2,524	1,077	(8)	6,154	6,154	7,231	529	NA	529	14,839	3,111	NA	3,111	17,951
1985	4,433	(7)	2,432	2,432	966	(8)	5,901	5,901	6,867	504	NA	504	14,237	3,044	NA	3,044	17,281
1986	4,314	(7)	2,318	2,318	923	(8)	5,579	5,579	6,502	485	NA	485	13,619	2,602	NA	2,602	16,221
1987	4,315	(7)	2,430	2,430	1,149	(8)	5,953	5,953	7,103	519	NA	519	14,367	2,844	NA	2,844	17,211
1988	4,630	(7)	2,670	2,670	1,096	(8)	6,383	6,383	7,479	614	NA	614	15,394	2,636	NA	2,636	18,030
1989	4,781	30	2,688	2,718	1,070	914	⁹⁵ 5,903	⁹⁶ 6,816	7,886	629	NA	629	16,014	⁹² 2,791	⁹³ 315	⁹³ 3,105	⁹¹ 19,119
1990	4,391	46	2,576	2,623	1,236	1,055	⁹⁵ 5,963	⁹⁷ 7,018	8,255	660	(s)	660	15,929	⁹² 2,794	⁹⁴ 51	⁹³ 3,245	⁹¹ 19,174
1991	4,556	52	2,676	2,729	1,129	1,061	⁹⁶ 6,170	⁹⁷ 7,231	8,360	601	(s)	602	16,246	⁹² 2,822	⁹⁴ 94	⁹³ 3,316	⁹¹ 19,562
1992	4,690	62	2,740	2,803	1,171	⁹¹ 1,107	⁹⁶ 6,420	⁹⁷ 7,527	8,698	588	2	590	16,587	⁹² 2,829	⁹⁶ 19	⁹³ 3,448	⁹² 20,228
1993	4,956	65	2,796	2,862	1,172	⁹¹ 1,124	⁹⁶ 6,576	7,700	8,872	624	3	627	17,317	2,755	718	3,473	20,790
1994	4,848	72	2,823	2,895	1,124	⁹¹ 1,176	⁹⁶ 6,613	7,790	8,913	685	3	689	17,345	3,065	838	3,903	21,247
1995	4,850	78	2,953	3,031	1,220	⁹¹ 1,258	⁹⁶ 6,906	8,164	9,384	700	5	705	17,970	3,288	949	4,237	22,207
1996	5,241	82	3,076	3,158	1,250	1,289	7,146	8,435	9,685	711	6	718	18,802	2,824	983	3,807	22,609
1997	4,984	87	3,128	3,215	1,203	1,282	7,229	8,511	9,714	751	8	760	18,673	3,039	1,026	4,065	22,737
1998	4,520	87	2,912	2,999	1,173	1,355	6,965	8,320	9,493	635	9	645	17,658	3,544	1,044	4,588	22,246
1999	4,726	84	2,961	3,045	1,079	1,401	6,678	8,079	9,158	645	¹⁰¹ 2	657	17,586	3,729	1,090	4,820	22,405
2000	4,996	85	^{R3} 3,098	^{R3} 3,182	1,151	1,386	6,757	8,142	9,293	642	¹⁰¹ 3	655	^{R18} 18,127	4,093	1,114	5,206	^{R23} 3,333
2001	^{R4} 4,771	79	^{R2} 2,944	^{R3} 3,023	^{R1} 1,119	1,310	^{R6} 6,035	^{R7} 7,344	^{R8} 8,463	^{R6} 625	¹⁰¹ 5	^{R6} 640	^{R16} 16,896	4,164	^{R1} 1,178	5,342	^{R22} 2,239
2002	^{R4} 4,890	^{R7} 4	3,029	^{R3} 3,103	^{R1} 1,114	^{R1} 1,240	^{R6} 6,316	^{R7} 7,557	^{R8} 8,671	^{R6} 667	¹⁰¹ 5	^{R6} 682	^{R17} 17,346	^{R4} 4,258	^{R1} 1,413	^{R5} 5,672	^{R23} 3,018
2003 ^P	5,101	71	3,058	3,129	1,123	1,138	5,829	6,967	8,090	635	¹⁰¹ 5	650	16,970	3,611	1,313	4,924	21,894

¹ Electricity-only and combined-heat-and-power (CHP) plants within the NAICS (North American Industry Classification System) 22 category whose primary business is to sell electricity, or electricity and heat, to the public. Through 1988, data are for electric utilities only; beginning in 1989, data are for electric utilities and independent power producers. Electric utility CHP plants are included in "Electricity Only."

² Commercial combined-heat-and-power and a small number of commercial electricity-only plants.

³ All commercial sector fuel use other than that in "Commercial CHP."

⁴ Industrial combined-heat-and-power (CHP) and a small number of industrial electricity-only plants.

⁵ All industrial sector fuel use other than that in "Lease and Plant Fuel" and "Industrial CHP."

⁶ Natural gas consumed in the operation of pipelines, primarily in compressors.

⁷ Included in "Commercial Other."

⁸ Included in "Industrial Non-CHP."

⁹ For 1989-1992, a small amount of consumption at independent power producers may be counted in both "Other Industrial" and "Electric Power Sector." See Note 1, "Natural Gas Deliveries to Nonutilities, 1989-1992" at end of section.

¹⁰ For 1999 forward, vehicle fuel data do not reflect revised data shown in Table 10.7. These revisions, in million cubic feet, are: 1999—10,313; 2000—11,365; 2001—13,646; 2002—15,657; and 2003—18,339.

R=Revised. P=Preliminary. NA=Not available. (s)=Less than 0.5 billion cubic feet.

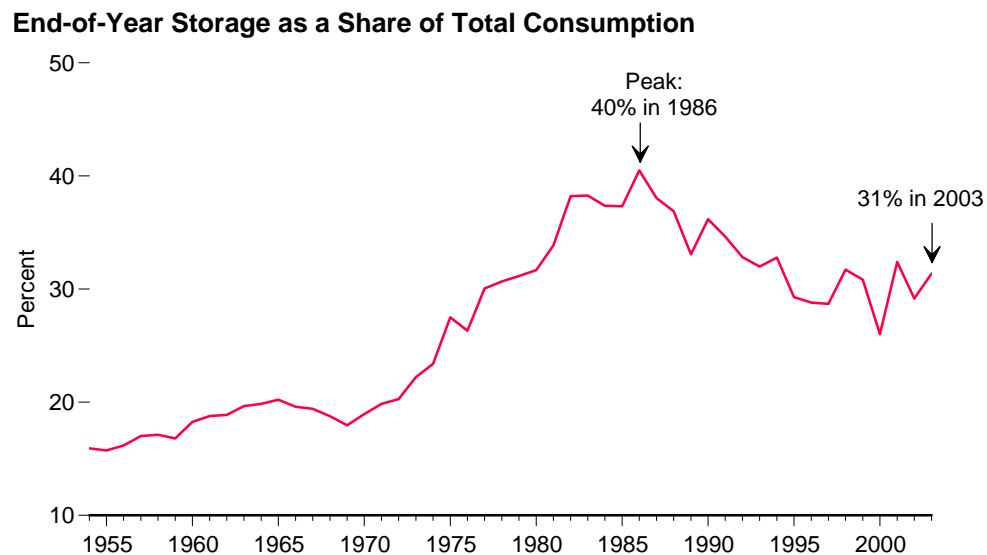
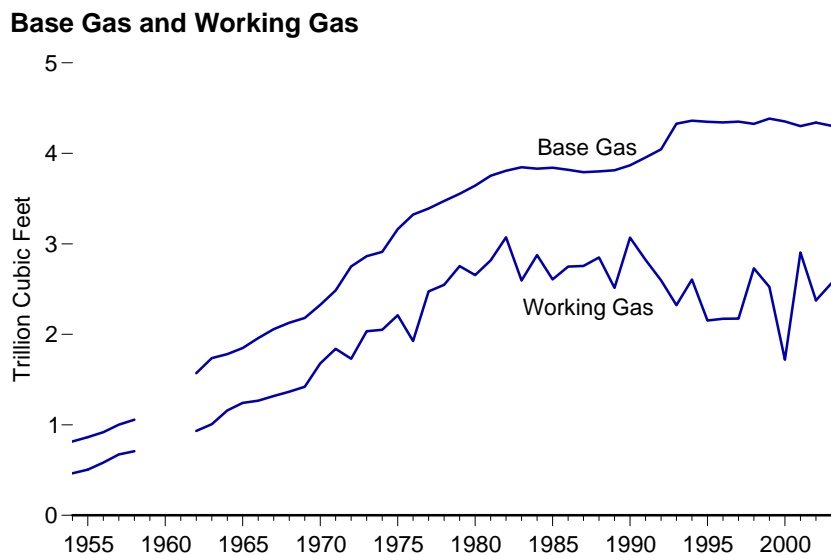
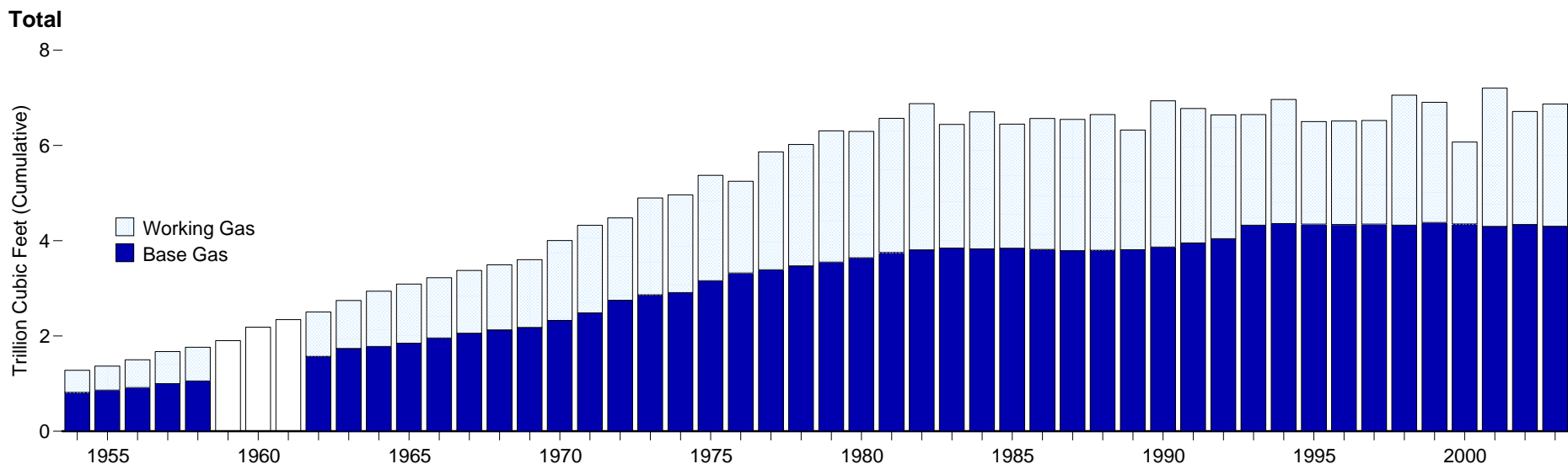
Notes: • Data are for natural gas, plus a small amount of supplemental gaseous fuels that cannot be identified separately. • See Tables 8.5a-8.5d for the amount of natural gas used to produce electricity and

Tables 8.6a-8.6c for the amount of natural gas used to produce useful thermal output. • See Note 2, "Natural Gas Consumption," at end of section. • Beginning with 1965, all volumes are shown on a pressure base of 14.73 p.s.i.a. at 60° F. For prior years, the pressure base was 14.65 p.s.i.a. at 60° F. • Totals may not equal sum of components due to independent rounding.

Web Pages: • For data not shown for 1951-1969, see <http://www.eia.doe.gov/emeu/aer/hatgas.html>. • For related information, see http://www.eia.doe.gov/oil_gas/natural_gas/info_glance/natural_gas.html.

Sources: **Residential, Commercial Total, Lease and Plant Fuel, and Pipeline Fuel:** • 1949-1997—Energy Information Administration (EIA), *Natural Gas Annual (NGA) 2000* (November 2001), Table 95 • 1998 forward—EIA, *Natural Gas Monthly (NGM)* (March 2004), Table 3. **Other Industrial Total:** • 1949-1992—EIA, *NGA 2000* (November 2001), Table 95. • 1993-1996—EIA, Form EIA-857, "Monthly Report of Natural Gas Purchases and Deliveries to Consumers." • 1997—EIA, *NGM* (May 2003), Table 3. • 1998 forward—EIA, *NGM* (March 2004), Table 3. **Vehicle Fuel:** • 1990 and 1991—EIA, *NGA 2000* (November 2001), Table 95. • 1992-1995—Science Applications International Corporation, "Alternative Transportation Fuels and Vehicles Data Development," unpublished final report prepared for EIA (McLean, VA, July 1996) and U.S. Department of Energy, Office of Energy Efficiency and Renewable Energy. • 1996—EIA, Office of Coal, Nuclear, Electric, and Alternate Fuels. • 1997—EIA, *NGM* (May 2003), Table 3. • 1998 forward—EIA, *NGM* (March 2004), Table 3. **Commercial CHP and Industrial CHP:** Table 8.7c. **Electric Power Sector:** Tables 8.5b, 8.5c, 8.6b, and 8.7b. **All Other Data:** Calculated.

Figure 6.6 Natural Gas in Underground Storage, 1954-2003



Notes: • Storage is at end of year. • Because vertical scales differ, graphs should not be compared. • Working- and base-gas component data were not collected in 1959, 1960, and 1961.

Sources: Tables 6.5 and 6.6.

Table 6.6 Natural Gas in Underground Storage, 1954-2003
(Billion Cubic Feet)

Year	Base Gas ¹			Working Gas			Total		
	Traditonal Storage	Salt Caverns	Total	Traditonal Storage	Salt Caverns	Total	Traditonal Storage	Salt Caverns	Total
1954	NA	NA	817	NA	NA	465	NA	NA	1,281
1955	NA	NA	863	NA	NA	505	NA	NA	1,368
1956	NA	NA	919	NA	NA	583	NA	NA	1,502
1957	NA	NA	1,001	NA	NA	673	NA	NA	1,674
1958	NA	NA	1,056	NA	NA	708	NA	NA	1,764
1959	NA	NA	NA	NA	NA	NA	NA	NA	1,901
1960	NA	NA	NA	NA	NA	NA	NA	NA	2,184
1961	NA	NA	NA	NA	NA	NA	NA	NA	2,344
1962	NA	NA	1,571	NA	NA	933	NA	NA	2,504
1963	NA	NA	1,738	NA	NA	1,007	NA	NA	2,745
1964	NA	NA	1,781	NA	NA	1,159	NA	NA	2,940
1965	NA	NA	1,848	NA	NA	1,242	NA	NA	3,090
1966	NA	NA	1,958	NA	NA	1,267	NA	NA	3,225
1967	NA	NA	2,058	NA	NA	1,318	NA	NA	3,376
1968	NA	NA	2,128	NA	NA	1,366	NA	NA	3,495
1969	NA	NA	2,181	NA	NA	1,421	NA	NA	3,602
1970	NA	NA	2,326	NA	NA	1,678	NA	NA	4,004
1971	NA	NA	2,485	NA	NA	1,840	NA	NA	4,325
1972	NA	NA	2,751	NA	NA	1,729	NA	NA	4,480
1973	NA	NA	2,864	NA	NA	2,034	NA	NA	4,898
1974	NA	NA	2,912	NA	NA	2,050	NA	NA	4,962
1975	NA	NA	3,162	NA	NA	2,212	NA	NA	5,374
1976	NA	NA	3,323	NA	NA	1,926	NA	NA	5,250
1977	NA	NA	3,391	NA	NA	2,475	NA	NA	5,866
1978	NA	NA	3,473	NA	NA	2,547	NA	NA	6,020
1979	NA	NA	3,553	NA	NA	2,753	NA	NA	6,306
1980	NA	NA	3,642	NA	NA	2,655	NA	NA	6,297
1981	NA	NA	3,752	NA	NA	2,817	NA	NA	6,569
1982	NA	NA	3,808	NA	NA	3,071	NA	NA	6,879
1983	NA	NA	3,847	NA	NA	2,595	NA	NA	6,442
1984	NA	NA	3,830	NA	NA	2,876	NA	NA	6,706
1985	NA	NA	3,842	NA	NA	2,607	NA	NA	6,448
1986	NA	NA	3,819	NA	NA	2,749	NA	NA	6,567
1987	NA	NA	3,792	NA	NA	2,756	NA	NA	6,548
1988	NA	NA	3,800	NA	NA	2,850	NA	NA	6,650
1989	NA	NA	3,812	NA	NA	2,513	NA	NA	6,325
1990	NA	NA	3,868	NA	NA	3,068	NA	NA	6,936
1991	NA	NA	3,954	NA	NA	2,824	NA	NA	6,778
1992	NA	NA	4,044	NA	NA	2,597	NA	NA	6,641
1993	NA	NA	4,327	NA	NA	2,322	NA	NA	6,649
1994	4,317	44	4,360	2,536	70	2,606	6,853	113	6,966
1995	4,290	60	4,349	2,082	72	2,153	6,371	131	6,503
1996	4,277	64	4,341	2,087	85	2,173	6,364	149	6,513
1997	4,283	67	4,350	2,092	83	2,175	6,375	150	6,525
1998	4,259	67	4,326	2,626	104	2,730	6,884	171	7,056
1999	4,314	69	4,383	2,423	100	2,523	6,738	169	6,906
2000	4,282	70	4,352	1,647	72	1,719	5,929	142	6,071
2001	4,224	77	4,301	2,789	115	2,904	7,013	191	7,204
2002	4,265	75	4,340	2,273	102	2,375	6,539	177	6,715
2003 ^P	4,229	76	4,305	2,440	125	2,565	6,668	201	6,869

¹ Includes native gas.

P=Preliminary. NA=Not available.

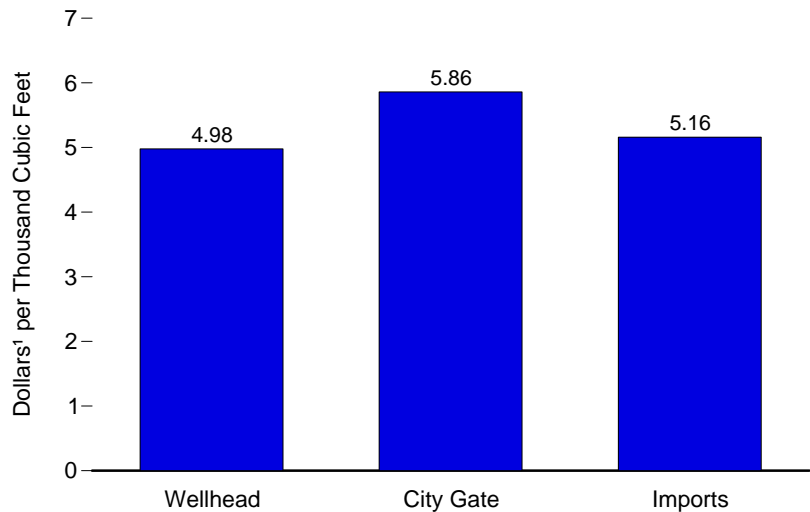
Notes: • Storage is at end of year. • Beginning with 1965, all volumes are shown on a pressure base of 14.73 p.s.i.a. at 60° F. For prior years, the pressure base was 14.65 p.s.i.a. at 60° F. • Totals may not equal sum of components due to independent rounding.

Web Page: See http://www.eia.doe.gov/oil_gas/natural_gas/info_glance/natural_gas.html for related information.

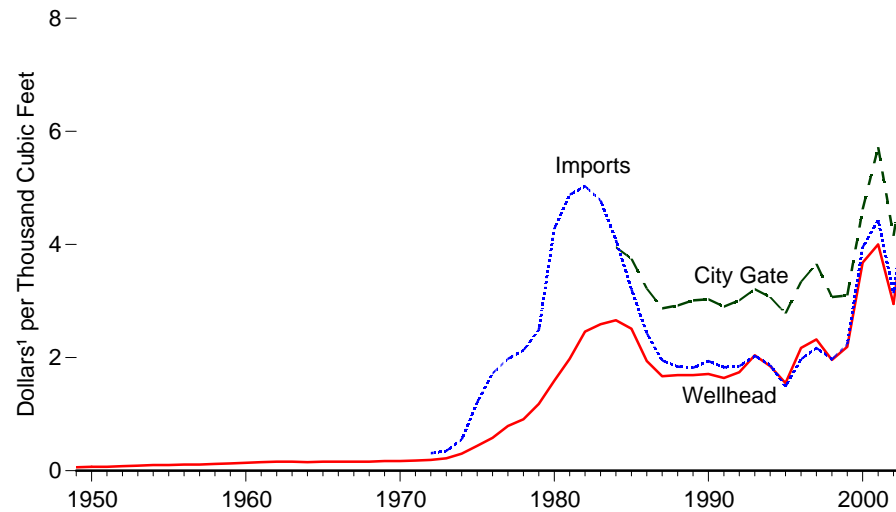
Sources: • 1954-1974—American Gas Association, *Gas Facts*. • 1975-1978—Federal Energy Administration, Form FEA-G318-M-O, "Underground Gas Storage Report," and Federal Power Commission, Form FPC-8, "Underground Gas Storage Report." • 1979-1984—Energy Information Administration (EIA), Form EIA-191, "Underground Gas Storage Report" and Federal Energy Regulatory Commission, Form FERC-8, "Underground Gas Storage Report." • 1985-2001—EIA, *Natural Gas Monthly (NGM)*, monthly reports. • 2002 and 2003—EIA, *NGM* (March 2004), Tables 9, 11, and 12.

Figure 6.7 Natural Gas Wellhead, City Gate, and Imports Prices

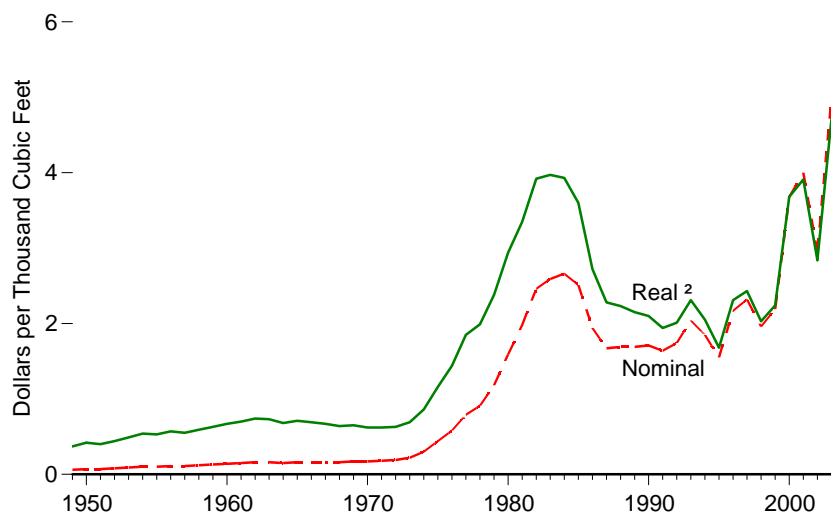
Wellhead, City Gate, and Imports, 2003



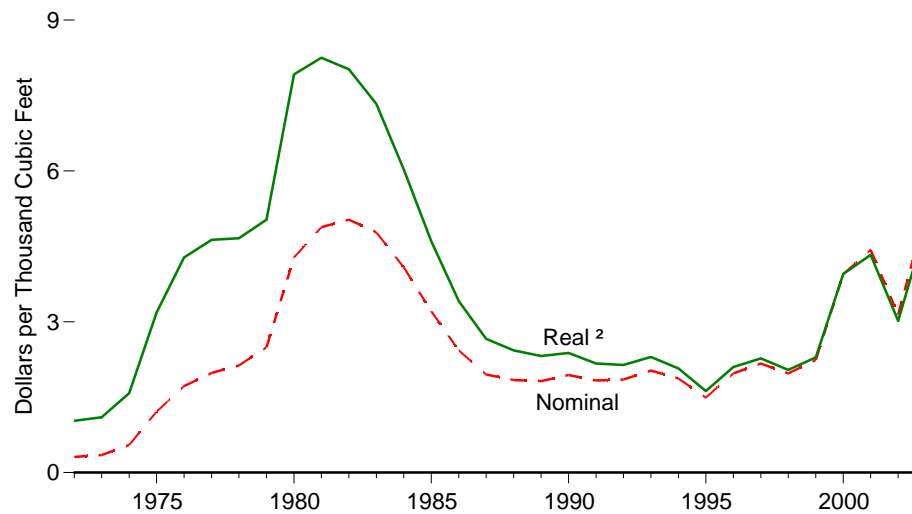
Wellhead, City Gate, and Imports, 1949-2003



Wellhead, 1949-2003



Imports, 1972-2003



¹ Nominal dollars.

² In chained (2000) dollars, calculated by using gross domestic product implicit price deflators. See Table D1.

Note: Because vertical scales differ, graphs should not be compared. Source: Table 6.7.

Table 6.7 Natural Gas Wellhead, City Gate, and Imports Prices, Selected Years, 1949-2003
(Dollars per Thousand Cubic Feet)

Year	Wellhead ¹		City Gate ²		Imports	
	Nominal	Real ³	Nominal	Real ³	Nominal	Real ³
1949	0.06	R0.37	NA	NA	NA	NA
1950	0.07	R0.42	NA	NA	NA	NA
1955	0.10	R0.53	NA	NA	NA	NA
1960	0.14	R0.67	NA	NA	NA	NA
1965	0.16	R0.71	NA	NA	NA	NA
1970	0.17	R0.62	NA	NA	NA	NA
1971	0.18	R0.62	NA	NA	NA	NA
1972	0.19	R0.63	NA	NA	0.31	R1.03
1973	0.22	R0.69	NA	NA	0.35	R1.10
1974	0.30	R0.86	NA	NA	0.55	R1.58
1975	0.44	R1.16	NA	NA	1.21	R3.18
1976	0.58	R1.44	NA	NA	1.72	R4.28
1977	0.79	R1.85	NA	NA	1.98	R4.63
1978	0.91	R1.99	NA	NA	2.13	R4.66
1979	1.18	R2.38	NA	NA	2.49	R5.03
1980	1.59	R2.94	NA	NA	4.28	R7.92
1981	1.98	R3.35	NA	NA	4.88	R8.25
1982	2.46	R3.92	NA	NA	5.03	R8.02
1983	2.59	R3.97	NA	NA	4.78	R7.33
1984	2.66	R3.93	3.95	R5.84	4.08	R6.03
1985	2.51	R3.60	3.75	R5.38	3.21	R4.60
1986	1.94	R2.72	3.22	R4.52	2.43	R3.41
1987	1.67	R2.28	2.87	R3.92	1.95	R2.66
1988	1.69	R2.23	2.92	R3.86	1.84	R2.43
1989	1.69	R2.15	3.01	R3.83	1.82	R2.32
1990	1.71	R2.10	3.03	R3.71	1.94	R2.38
1991	1.64	R1.94	2.90	R3.43	1.83	R2.17
1992	1.74	R2.01	3.01	R3.48	1.85	R2.14
1993	2.04	R2.31	3.21	R3.63	2.03	R2.30
1994	1.85	R2.05	3.07	R3.40	1.87	R2.07
1995	1.55	R1.68	2.78	R3.02	1.49	R1.62
1996	2.17	R2.31	3.34	R3.56	1.97	R2.10
1997	2.32	R2.43	3.66	R3.84	2.17	R2.27
1998	1.96	R2.03	3.07	R3.18	1.97	R2.04
1999	2.19	R2.24	3.10	R3.17	2.24	R2.29
2000	R3.68	R3.68	4.62	R4.62	3.95	R3.95
2001	R4.00	R3.91	5.72	R5.59	4.43	R4.33
2002	2.95	R2.84	4.12	R3.96	3.15	R3.03
2003 ^P	4.98	4.71	5.86	5.55	5.16	4.88

¹ See "Natural Gas Wellhead Price" in Glossary.

² See "City Gate" in Glossary.

³ In chained (2000) dollars, calculated by using gross domestic product implicit price deflators. See Appendix Table D1.

R=Revised. P=Preliminary. NA=Not available.

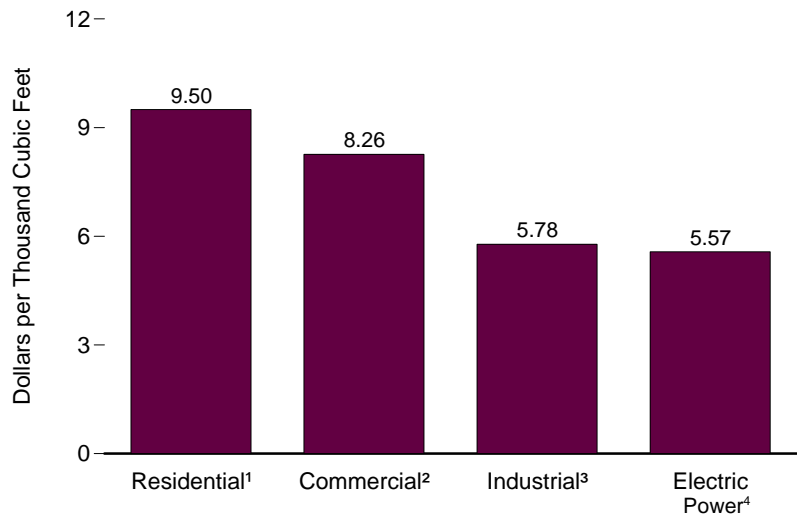
Web Pages: • For data not shown for 1951-1969, see <http://www.eia.doe.gov/emeu/aer/natgas.html>.

• For related information, see http://www.eia.doe.gov/oil_gas/natural_gas/info_glance/natural_gas.html.

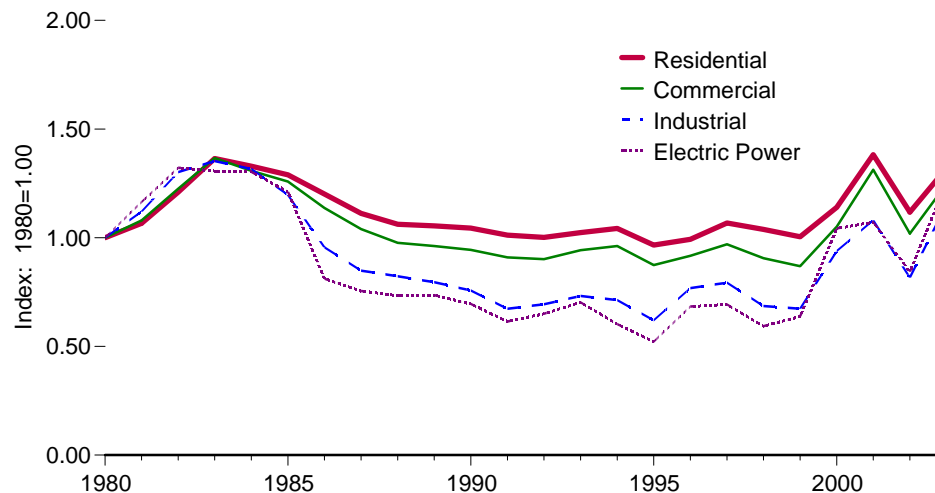
Sources: **Wellhead:** • 1949-1997—Energy Information Administration (EIA), *Natural Gas Annual (NGA) 2000* (November 2001), Table 93. • 1998 forward—EIA, *Natural Gas Monthly (NGM)* (March 2004), Table 4. **City Gate:** • 1984-1997—EIA, *NGA 2000* (November 2001), Table 96. • 1998 forward—EIA, *NGM* (March 2004), Table 4. **Imports:** • 1972 and 1973—Federal Power Commission (FPC), *Pipeline Imports and Exports of Natural Gas—Imports and Exports of LNG*. • 1974-1976—FPC, *United States Imports and Exports of Natural Gas*, annual reports. • 1977-1997—EIA, *NGA*, annual reports. • 1998 forward—EIA, *NGM* (March 2004), Tables 5 and 6.

Figure 6.8 Natural Gas Prices by Sector

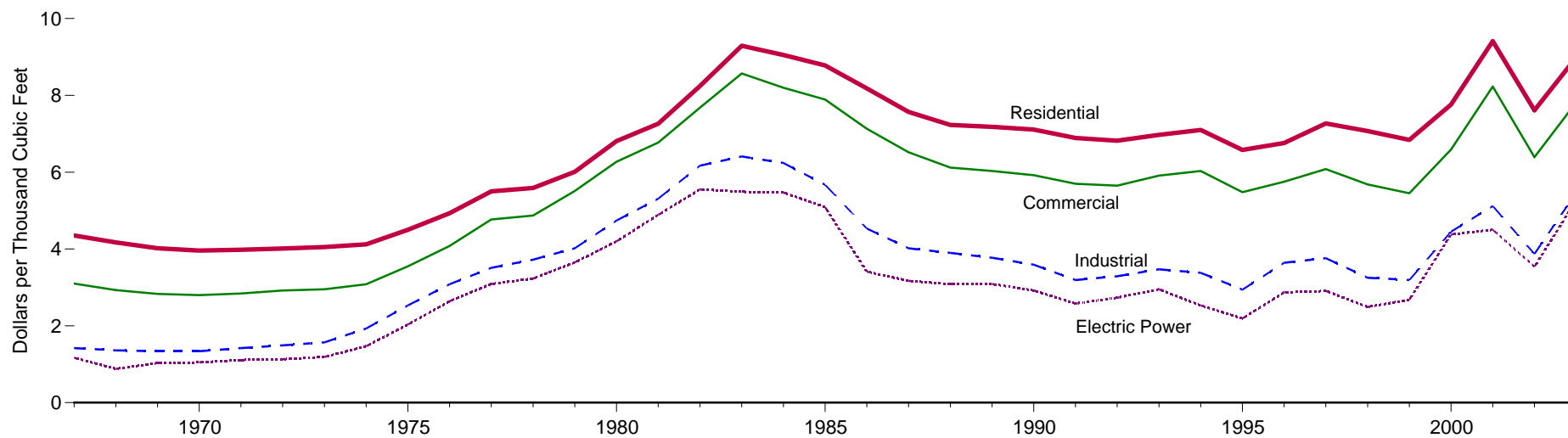
Nominal Prices, 2003



Real Prices⁵, Indexed, 1980-2003



Real Prices⁵, 1967-2003



¹ Based on 92.1 percent of volume delivered.
² Based on 77.2 percent of volume delivered.
³ Based on 22.2 percent of volume delivered.
⁴ Based on 83.6 percent of volume delivered.

⁵ In chained (2000) dollars, calculated by using gross domestic product implicit price deflators. See Table D1. Source: Table 6.8.

Table 6.8 Natural Gas Prices by Sector, 1967-2003
(Dollars per Thousand Cubic Feet)

Year	Residential ¹			Commercial ^{1,2}			Industrial ^{1,3}			Vehicle Fuel ⁴		Electric Power ⁵		
	Prices		Percentage of Sector ⁷	Prices		Percentage of Sector ⁷	Prices		Percentage of Sector ⁷	Prices		Prices		Percentage of Sector ⁷
	Nominal	Real ⁶		Nominal	Real ⁶		Nominal	Real ⁶		Nominal	Real ⁶	Nominal	Real ⁶	
1967	1.04	R4.35	NA	0.74	R3.10	NA	0.34	R1.42	NA	NA	NA	0.28	R1.17	NA
1968	1.04	R4.17	NA	0.73	R2.93	NA	0.34	R1.36	NA	NA	NA	0.22	R0.88	NA
1969	1.05	R4.02	NA	0.74	R2.83	NA	0.35	R1.34	NA	NA	NA	0.27	R1.03	NA
1970	1.09	R3.96	NA	0.77	R2.80	NA	0.37	R1.34	NA	NA	NA	0.29	R1.05	NA
1971	1.15	R3.98	NA	0.82	R2.84	NA	0.41	R1.42	NA	NA	NA	0.32	R1.11	NA
1972	1.21	R4.01	NA	0.88	R2.92	NA	0.45	R1.49	NA	NA	NA	0.34	R1.13	NA
1973	1.29	R4.05	NA	0.94	R2.95	NA	0.50	R1.57	NA	NA	NA	0.38	R1.19	92.1
1974	1.43	R4.12	NA	1.07	R3.08	NA	0.67	R1.93	NA	NA	NA	0.51	R1.47	92.7
1975	1.71	R4.50	NA	1.35	R3.55	NA	0.96	R2.53	NA	NA	NA	0.77	R2.03	96.1
1976	1.98	R4.93	NA	1.64	R4.08	NA	1.24	R3.08	NA	NA	NA	1.06	R2.64	96.2
1977	2.35	R5.50	NA	2.04	R4.77	NA	1.50	R3.51	NA	NA	NA	1.32	R3.09	97.1
1978	2.56	R5.59	NA	2.23	R4.87	NA	1.70	R3.72	NA	NA	NA	1.48	R3.23	98.0
1979	2.98	R6.01	NA	2.73	R5.51	NA	1.99	R4.02	NA	NA	NA	1.81	R3.65	96.1
1980	3.68	R6.81	NA	3.39	R6.27	NA	2.56	R4.74	NA	NA	NA	2.27	R4.20	96.9
1981	4.29	R7.26	NA	4.00	R6.77	NA	3.14	R5.31	NA	NA	NA	2.89	R4.89	97.6
1982	5.17	R8.24	NA	4.82	R7.68	NA	3.87	R6.17	85.1	NA	NA	3.48	R5.55	92.6
1983	6.06	R9.29	NA	5.59	R8.57	NA	4.18	R6.41	80.7	NA	NA	3.58	R5.49	93.9
1984	6.12	R9.05	NA	5.55	R8.20	NA	4.22	R6.24	74.7	NA	NA	3.70	R5.47	94.4
1985	6.12	R8.78	NA	5.50	R7.89	NA	3.95	R5.67	68.8	NA	NA	3.55	R5.09	94.0
1986	5.83	R8.18	NA	5.08	R7.13	NA	3.23	R4.53	59.8	NA	NA	2.43	R3.41	91.7
1987	5.54	R7.57	NA	4.77	R6.52	93.1	2.94	R4.02	47.4	NA	NA	2.32	R3.17	91.6
1988	5.47	R7.23	NA	4.63	R6.12	90.7	2.95	R3.90	42.6	NA	NA	2.33	R3.08	89.6
1989	5.64	R7.18	99.9	4.74	R6.03	89.1	2.96	R3.77	36.9	NA	NA	2.43	R3.09	88.6
1990	5.80	R7.11	99.3	4.83	R5.92	86.6	2.93	R3.59	35.2	3.39	R4.15	2.38	R2.92	89.2
1991	5.82	R6.89	99.2	4.81	R5.70	85.1	2.69	R3.19	32.7	3.96	R4.69	2.18	R2.58	93.2
1992	5.89	R6.82	99.1	4.88	R5.65	83.2	2.84	R3.29	30.3	4.05	R4.69	2.36	R2.73	93.2
1993	6.16	R6.97	99.1	5.22	R5.91	83.9	3.07	R3.47	29.7	4.27	R4.83	2.61	R2.95	93.4
1994	6.41	R7.10	99.1	5.44	R6.03	79.3	3.05	R3.38	25.5	4.11	R4.55	2.28	R2.53	93.5
1995	6.06	R6.58	99.1	5.05	R5.48	76.7	2.71	R2.94	24.5	3.98	R4.32	2.02	R2.19	92.0
1996	6.34	R6.76	99.1	5.40	R5.75	77.6	3.42	R3.64	19.4	4.34	R4.62	2.69	R2.87	92.2
1997	6.94	R7.27	98.8	5.80	R6.08	70.8	3.59	R3.76	18.1	4.44	R4.65	2.78	R2.91	91.0
1998	6.82	R7.07	97.7	5.48	R5.68	67.0	3.14	R3.25	16.1	4.59	R4.76	2.40	R2.49	82.5
1999	6.69	R6.84	95.2	5.33	R5.45	66.1	3.12	R3.19	18.8	4.34	R4.43	2.62	R2.68	75.3
2000	7.76	R7.76	92.6	6.59	R6.59	R63.9	4.45	R4.45	19.8	5.54	R5.54	4.38	R4.38	64.3
2001	R9.63	R9.41	R92.4	8.43	R8.23	R66.0	R5.24	R5.12	R20.8	6.60	R6.45	4.61	R4.50	41.9
2002	R7.91	R7.61	R91.4	R6.64	R6.39	R78.4	R4.02	R3.87	R22.5	R4.74	R4.56	5R3.68	5R3.54	5R1.1
2003	P9.50	P8.99	E92.1	P8.26	P7.82	P77.2	P5.78	P5.47	P22.2	NA	NA	P5.57	P5.27	P83.6

¹ Residential, commercial, and industrial prices do not include the price of natural gas delivered to consumers on behalf of third parties. Volumes of natural gas delivered on behalf of third parties are included in the consumption data shown in Table 6.5.

² Commercial sector, including commercial combined-heat-and-power (CHP) and commercial electricity-only plants.

³ Industrial sector, including industrial combined-heat-and-power (CHP) and industrial electricity-only plants.

⁴ Much of the natural gas delivered for vehicle fuel represents deliveries to fueling stations that are used primarily or exclusively by respondents' fleet vehicles. Thus, the prices are often those associated with the operation of fleet vehicles.

⁵ Electricity-only and combined-heat-and-power (CHP) plants within the NAICS (North American Industry Classification System) 22 category whose primary business is to sell electricity, or electricity and heat, to the public. Through 2001, data are for electric utilities only; beginning in 2002, data are for electric utilities and independent power producers. See Note 3, "Coverage of Electric Power Sector Natural Gas Prices," at end of section.

⁶ In chained (2000) dollars, calculated by using gross domestic product implicit price deflators. See Table D1.

⁷ The percentage of the sector's consumption in Table 6.5 for which price data are available.

R=Revised. P=Preliminary. E=Estimate. NA=Not available.

Notes: • Prices are for natural gas, plus a small amount of supplemental gaseous fuels that cannot be identified separately. • The average for each end-use sector is calculated by dividing the total value of the natural gas consumed by each sector by the total quantity consumed. • Prices are intended to include all taxes. • See Note 2, "Classification of Power Plants Into Energy-Use Sectors," at end of Section 8.

Web Page: See http://www.eia.doe.gov/oil_gas/natural_gas/info_glance/natural_gas.html for related information.

Sources: **Residential Percentage of Sector:** • 1989-1997—Energy Information Administration (EIA), *Natural Gas Annual (NGA)*, annual reports. • 1998-2002—EIA, *NGA 2002* (January 2004), Table 1. • 2003—EIA estimate. **Vehicle Fuel:** • 1990-2002—EIA, *NGA*, annual reports. **Electric Power:** • 1967-1997—EIA, *NGA*, annual reports. • 1998-2001—EIA, *Natural Gas Monthly (NGM)* (March 2004), Table 4. • 2002 and 2003—Federal Energy Regulatory Commission, Form FERC-423, "Monthly Report on Cost and Quality of Fuels for Electric Utility Plants," and EIA, Form EIA-423, "Monthly Cost and Quality of Fuels for Electric Plants Report." **All Other Data:** • 1967-1997—EIA, *NGA*, annual reports. • 1998 forward—EIA, *NGM* (March 2004), Table 4.

Natural Gas

Note 1. Natural Gas Deliveries to Nonutilities, 1989-1992. Prior to 1993, deliveries to nonutility generators were not separately collected from natural gas companies on Form EIA-176, “Annual Report of Natural and Supplemental Gas Supply and Disposition.” As a result, for 1989-1992, those volumes are probably included in both the industrial and electric power sectors and double-counted in total consumption. In 1993, 0.28 trillion cubic feet was reported as delivered to nonutility generators.

Note 2. Natural Gas Consumption. Natural gas consumption statistics are compiled from surveys of natural gas production, transmission, and distribution companies and from surveys of electric power generation. Consumption by sector from these surveys is compiled on a national and individual State basis and then balanced with national and individual State supply data. Included in the data are the following: **Residential Sector**—Consumption by private households for space heating, cooking, and other household uses; **Commercial Sector**—Consumption by nonmanufacturing establishments; municipalities for institutional heating and lighting; and, through 1995, those engaged in agriculture, forestry, and fishing. The commercial sector includes generators that produce electricity and/or useful thermal output primarily to support the activities of the above-mentioned commercial establishments; **Industrial Sector**—Consumption by establishments engaged primarily in processing unfinished materials into another form of product (including mining;

petroleum refining; manufacturing; and, beginning in 1996, agriculture, forestry, and fishing), and natural gas industry use for lease and plant fuel. The industrial sector includes generators that produce electricity and/or useful thermal output primarily to support the above-mentioned industrial activities; **Transportation Sector**—Natural gas transmission (pipeline) fuel, and natural gas delivered for use as vehicle fuel; and **Electric Power Sector (electric utilities and independent power producers)**—Consumption for electricity generation and useful thermal output at electricity-only and combined-heat-and-power (CHP) plants within the NAICS (North American Industry Classification System) 22 category whose primary business is to sell electricity, or electricity and heat, to the public.

Note 3. Coverage of Electric Power Sector Natural Gas Prices. For 1973-1982, data for electric power sector natural gas prices include all electric utility plants at which the generator nameplate capacity of all steam-electric units combined totaled 25 megawatts or greater. For 1974-1982, peaking units are also included and counted toward the 25-megawatt-or-greater total. For 1983-1990, data include all electric utility plants at which the generator nameplate capacity of all steam-electric units combined totaled 50 megawatts or greater. For 1991-2001, data include all electric utility plants at which the generator nameplate capacity of all steam-electric units and combined-cycle units together totaled 50 megawatts or greater. For 2002 forward, data include electric utility and independent power producer plants at which the total facility fossil-fueled nameplate generating capacity is 50 or more megawatts, regardless of unit type.