

United States
Department of
Agriculture

Forest Service

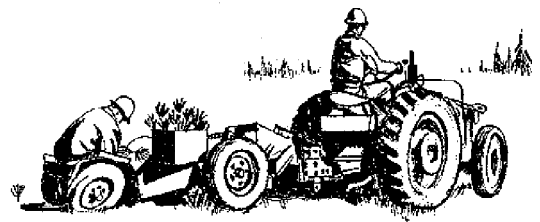
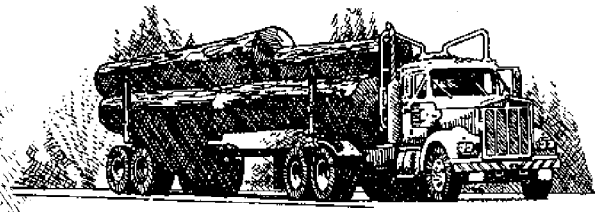
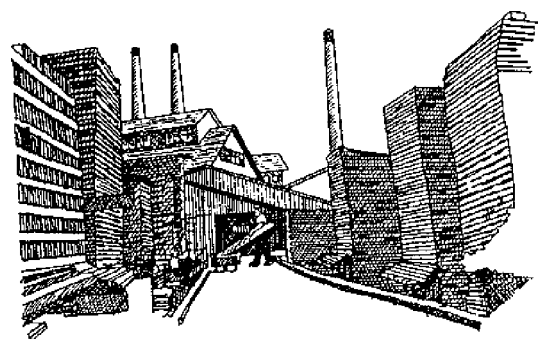
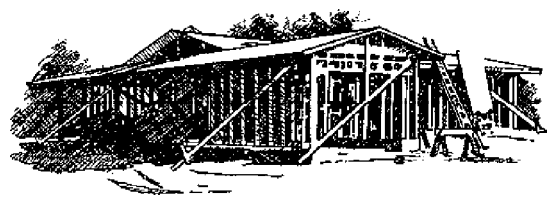


Southern
Research Station

Resource Bulletin
SRS-29

Mississippi's Timber Industry— An Assessment of Timber Product Output and Use, 1995

Daniel P. Stratton, Michael Howell,
and Randal Rometry

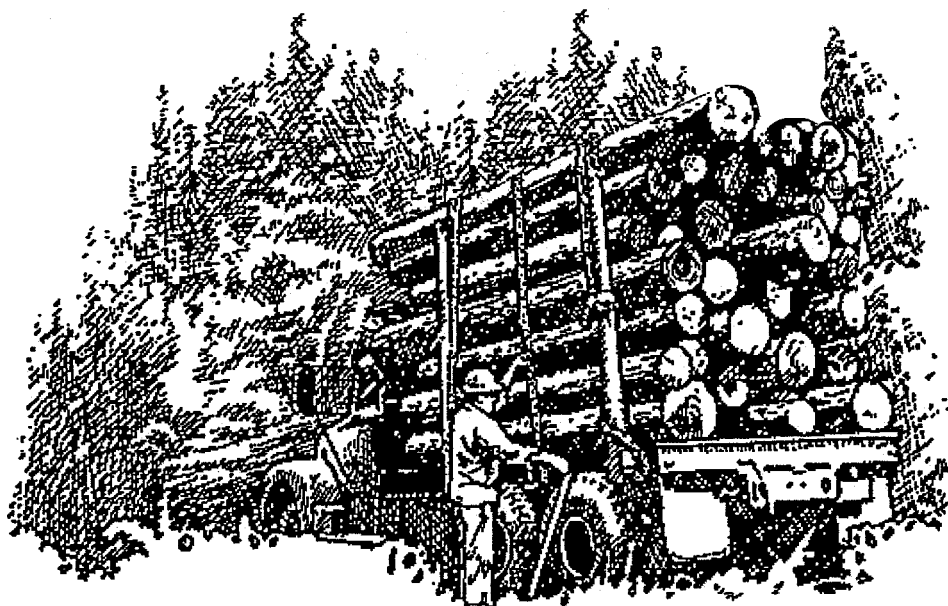


The Authors:

Daniel P. Stratton is a Biological Scientist with the Forest Inventory and Analysis Research Work Unit, Southern Research Station, U.S. Department of Agriculture, Forest Service, Asheville, NC 28802.

Michael Howell is a Resource Forester with the Forest Inventory and Analysis Research Work Unit, Southern Research Station, U.S. Department of Agriculture, Forest Service, Starkville, MS 39760.

Randal Rometry is a Forester with the Mississippi Forestry Commission, Jackson, MS 39201.



May 1998

Southern Research Station
P.O. Box 2680
Asheville, NC 28802

Foreword

This report contains the findings of a 1995 canvass of primary wood-using plants in Mississippi. It complements the Forest Inventory and Analysis (FIA) periodic inventory of volume and removals from the State's timberland. The canvass was conducted to determine the amount and source of wood receipts and annual timber product drain by county in 1995 and to determine interstate and cross-regional movement of industrial roundwood. Only primary wood-using mills with 10 or more full-time employees were canvassed. Primary mills are those that process roundwood in log or bolt form or as chipped roundwood. Examples of industrial roundwood products are saw logs, pulpwood, veneer logs, poles, and logs used for composite board products. Mills producing products from residues generated at primary and secondary processors were not canvassed. Trees chipped in the woods were included in the estimate of timber drain only if they were delivered to a primary domestic manufacturer.

A voluntary canvass of wood processors in Mississippi was conducted in 1996 to obtain information for 1995. In

addition, roundwood from out-of-State mills known to be using logs or bolts harvested from Mississippi timberland was incorporated into Mississippi production estimates. Each mill was canvassed by mail or through personal contact at plant locations.

Pulpwood production data were taken from an annual canvass of all southern pulpmills. Medium density fiberboard, insulating board, and hardboard plants were included in this survey.

The Southern Research Station gratefully acknowledges the cooperation and assistance provided by the Mississippi Forestry Commission in collecting mill data. Appreciation is also extended to forest industry and mill managers for providing timber products information. The information in this report is based on responses from 105 mills operating in 1995: 84 sawmills, 7 pulpmills, 10 veneer mills, 2 composite panel mills, and 2 mills manufacturing other industrial products.

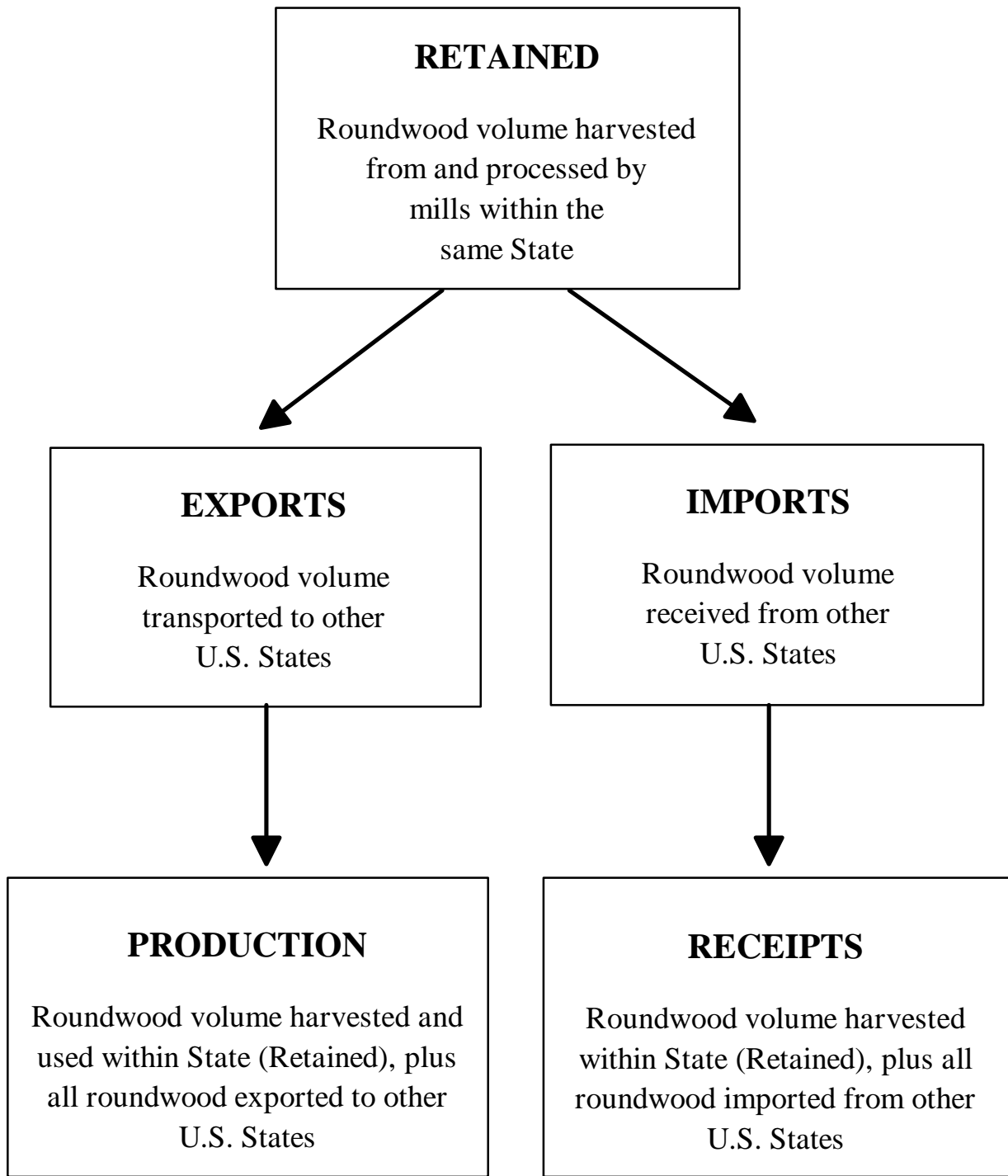


Contents

| | <i>Page</i> |
|--|-------------|
| Output of Industrial Timber Products | 1 |
| Plant Byproducts | 5 |
| Regional Observations | 5 |
| References | 7 |
| Definitions | 8 |
| Conversion Factors | 9 |
| Index of Tables | 10 |
| Tables 1-17 ^a | 11 |

^a All tables in this report are available in Microsoft® Excel workbook files. Upon request, these files will be supplied on 3½-inch diskettes.

The use of trade or firm names in this publication is for reader information and does not imply endorsement by the U.S. Department of Agriculture of any product or service.



Production = Retained + Exports

Receipts = Retained + Imports

Figure 1—Movement of roundwood exports and imports within the United States.

Mississippi's Timber Industry— An Assessment of Timber Product Output and Use, 1995

Daniel P. Stratton, Michael Howell, and Randal Romedy

Output of Industrial Timber Products

Note: The reader must understand that certain terms, namely—retained, export, import, production, and receipts—have specialized meanings and relationships unique to the Forest Inventory and Analysis Units across the country that deal with timber products output (fig. 1).

- In 1995, the industrial timber products output (TPO) was 1.4 billion cubic feet, 1.0 billion cubic feet from roundwood and 0.4 billion cubic feet from plant byproducts.
- Output of softwood roundwood products equaled 686 million cubic feet, while output of hardwood roundwood products equaled 348 million cubic feet (fig. 2).
- Pulpwood and saw logs were the principal roundwood products in 1995. Combined, they totaled 946 million cubic feet and accounted for 92 percent of the State's total roundwood output (fig. 3).

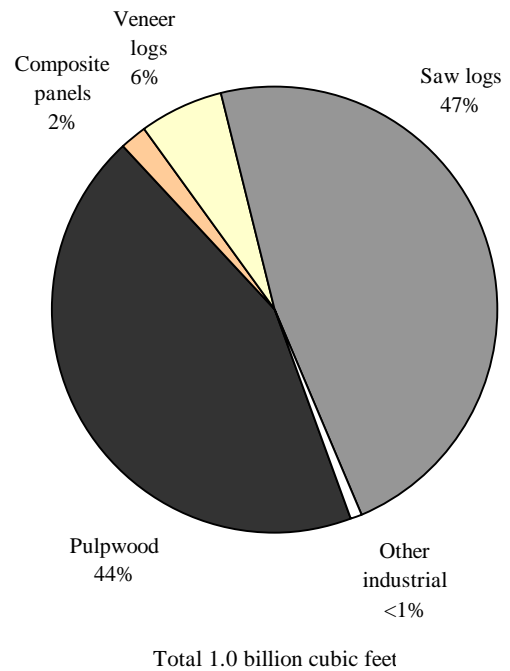


Figure 3—Roundwood production by type of product, 1995.

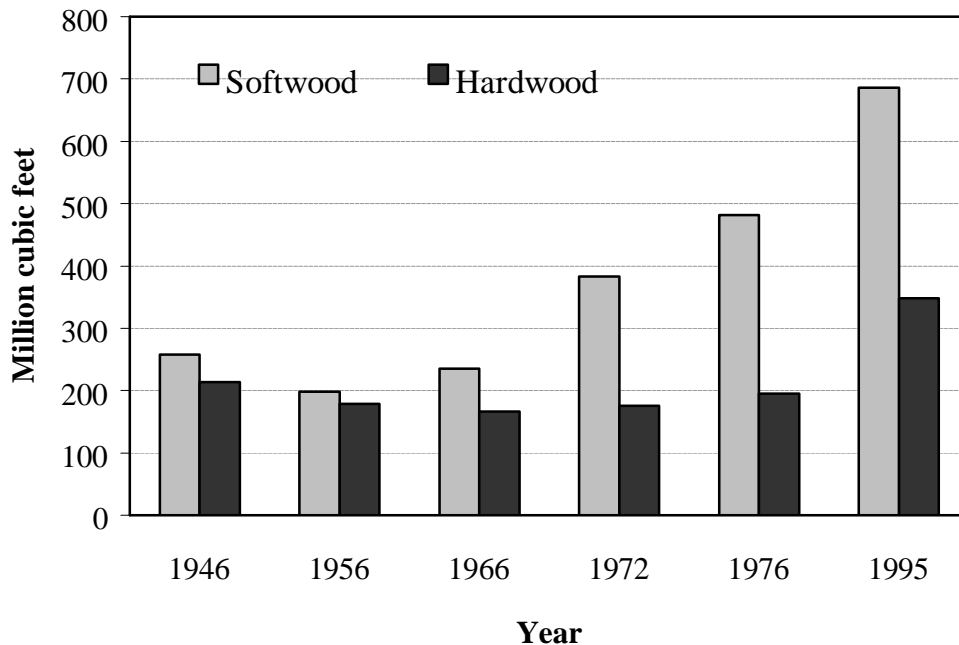


Figure 2—Roundwood production for all products by species group and year (see references on page 7 for individual years).

- Total receipts at Mississippi mills, which included roundwood harvested and retained in the State and roundwood imported from other States, totaled 878 million cubic feet. The number of primary roundwood-using plants canvassed in Mississippi was 105.

Saw Logs

- Saw logs accounted for 48 percent of the State’s total roundwood products. Output of softwood saw logs totaled 406 million cubic feet (2.2 billion board feet), while that of hardwood saw logs totaled 87 million cubic feet (492 million board feet) (fig. 4).
- In 1995, Mississippi had 84 sawmills. The total number of sawmills did not include sawmills with fewer than 10 employees. Total saw-log receipts reached 525 million cubic feet. Softwood saw-log receipts were 432 million cubic feet, while those of hardwoods were almost 93 million cubic feet. Of the operating mills, 38 percent had receipts less than 9.99 million board feet, and 44 percent had receipts between 10 and 49.99 million board feet. Only 18 percent of the mills had receipts greater than 50 million board feet, however those mills accounted for 63 percent of the sawmill receipts.

- Mississippi retained 91 percent of its saw-log production for domestic manufacture, with saw-log imports exceeding exports by 32 million cubic feet in 1995.

Pulpwood

- Pulpwood production, including chipped roundwood, totaled 454 million cubic feet and accounted for 44 percent of the State’s total roundwood TPO. Softwood output reached 208 million cubic feet (2.9 million cords), while hardwood output reached 246 million cubic feet (3.2 million cords) (fig. 5).
- Seven pulpmill facilities were operating and receiving roundwood in 1995. Pulpwood receipts totaled 253 million cubic feet, accounting for 29 percent of total receipts for all mills.
- Forty-six percent of roundwood cut for pulpwood was retained for processing at Mississippi pulpmills. Roundwood pulpwood accounted for 84 percent of total known exports and 32 percent of total imports. Roundwood pulpwood exports was 244 million cubic feet, or 200 million cubic feet more than was imported.

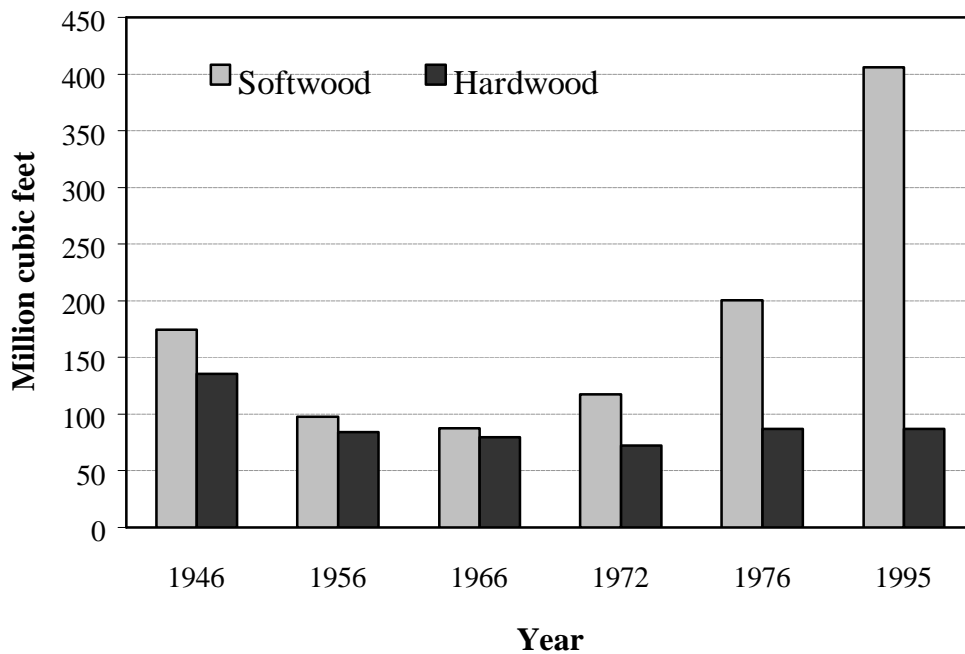


Figure 4—Roundwood saw-log production by species group and year (see references on page 7 for individual years).



Figure 5—Roundwood pulpwood production by species group and year (see references on page 7 for individual years).

Veneer Logs

- Output of veneer logs in 1995 totaled 63 million cubic feet and accounted for 6 percent of the State’s total roundwood TPO volume. Softwood veneer production was 57 million cubic feet (354 million board feet), while output of hardwood veneer logs totaled 6 million cubic feet (34 million board feet) (fig. 6).
- Mississippi had 10 veneer mills operating in 1995. Receipts of veneer logs totaled 75 million cubic feet. At 70 million cubic feet, softwood receipts accounted for 93 percent of the total veneer receipts.
- Mississippi retained 98 percent of its veneer-log production for processing at domestic veneer mills. Imports, which totaled almost 14 million cubic feet, were more than 9 times more than exports, which totaled 1.5 million cubic feet, making the State a net importer of roundwood veneer logs.

Composite Panels

- Roundwood harvested from Mississippi’s forests for composite panels totaled 23 million cubic feet, or 2 percent of the total TPO volume. Softwood output totaled 12 million cubic feet, while hardwood production totaled 11 million cubic feet.

- There were two composite panel mills operating in Mississippi. Receipts for these mills were 23 million cubic feet, or about 3 percent of the State’s total receipts.
- One hundred percent of the roundwood production harvested for composite panels was retained for processing in Mississippi’s mills, with an additional 13 thousand cubic feet imported from surrounding States.

Other Industrial Products

- Roundwood harvested for other industrial uses such as poles, posts, mulch, and other industrial products totaled more than 1 million cubic feet. Softwood constituted 100 percent of the other industrial product volume (fig. 7).
- There were two plants producing other industrial products in Mississippi. Combined receipts of other industrial products from softwood and hardwood totaled more than 1 million cubic feet.
- Mississippi retained 89 percent of the roundwood for other industrial products for domestic manufacture, with exports exceeding imports by 39 thousand cubic feet.

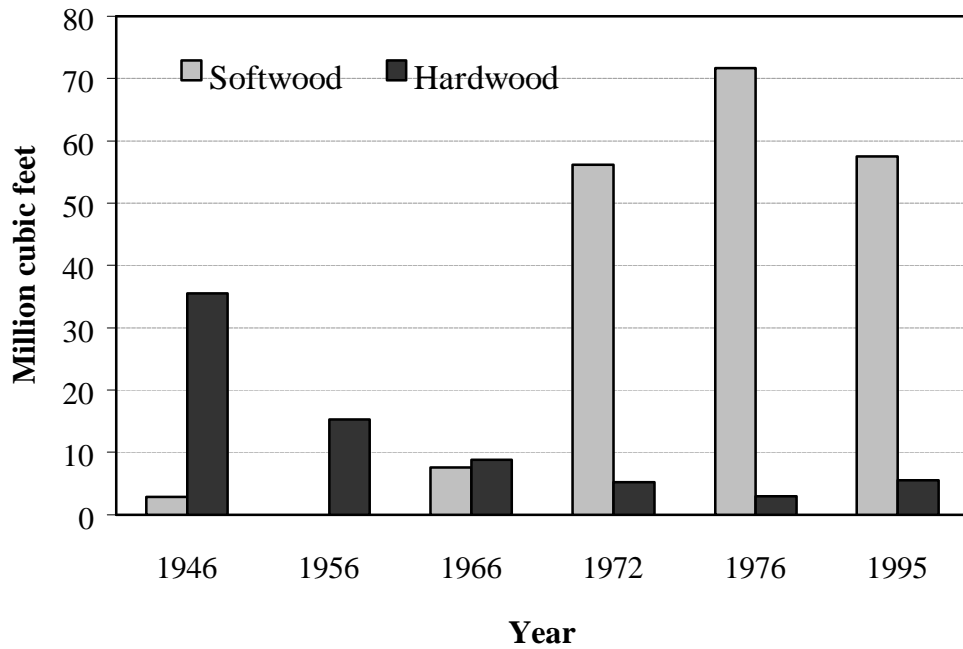


Figure 6—Roundwood veneer-log production by species group and year (see references on page 7 for individual years).

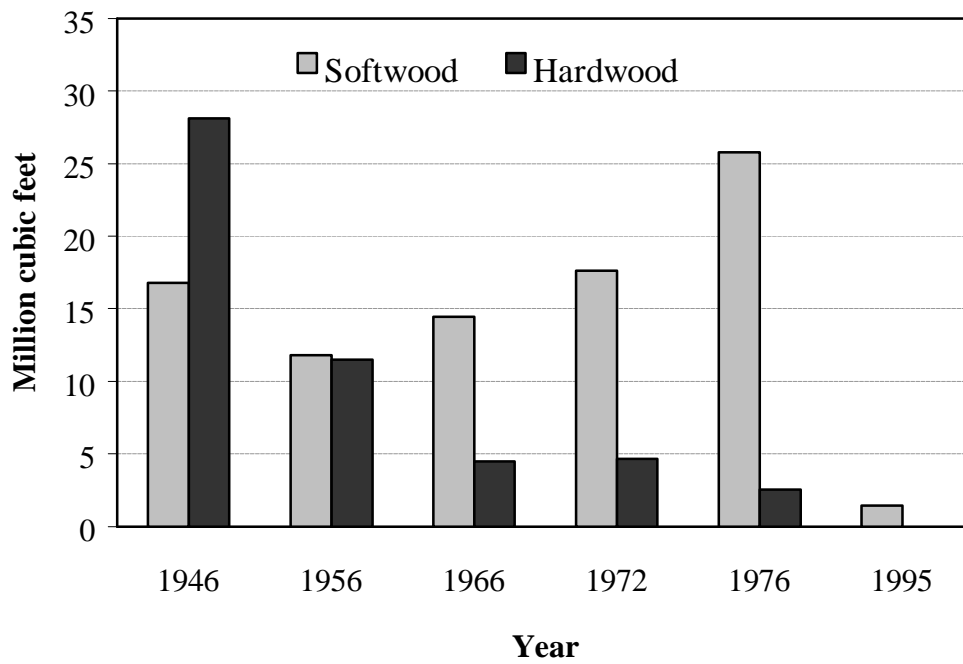


Figure 7—Roundwood production for other industrial products by species group and year (see references on page 7 for individual years).

Plant Byproducts

- The manufacture of primary products in Mississippi mills generated more than 365 million cubic feet of wood and bark residues. Coarse residues from all primary products was more than 138 million cubic feet, while bark volume totaled more than 91 million cubic feet. Sawdust and shavings constituted 37 percent of total residues, or 136 million cubic feet (fig. 8).

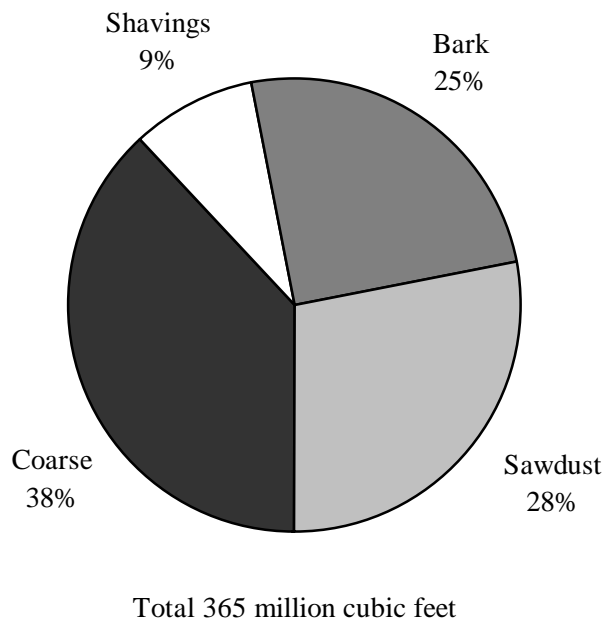


Figure 8—Primary mill residue by residue type, 1995.

- Virtually all of the wood and bark residues were used in product manufacture; 2 percent was not used. Fifty-one percent was used for industrial fuel (fig. 9). One hundred thirty million cubic feet, or 94 percent, of the coarse residues were used for fiber products. Most bark was used as industrial fuel or miscellaneous products, while 74 percent of the sawdust and shavings was used for industrial fuel.
- Sawmills generated 282 million cubic feet of residue, accounting for 77 percent of the total residue produced (fig. 10).

Regional Observations

Delta Region

- Roundwood output for both softwood and hardwood combined from the Delta region totaled 64 million cubic feet.

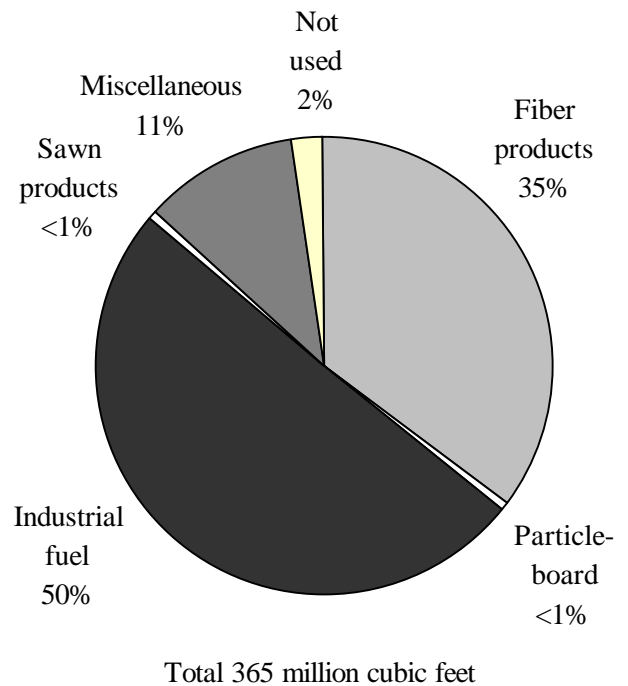


Figure 9—Disposal of residue by product, 1995.

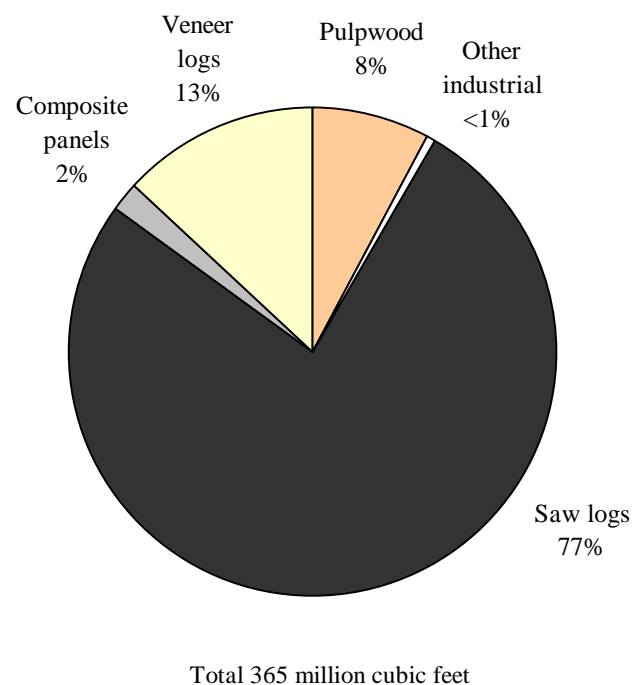


Figure 10—Primary mill residue produced by mill type, 1995.

- Pulpwood accounted for 54 percent of the region's TPO and 8 percent of the State's roundwood pulpwood output. The 22 million cubic feet of saw logs accounted for 35 percent of the total roundwood output.
- Eight primary wood-using plants were operating during 1995: 1 pulpmill, 6 sawmills, and 1 veneer mill (fig. 11).

North Region

- Almost 237 million cubic feet of roundwood were produced in the North region.
- Saw-log production of 127 million cubic feet accounted for 54 percent of the region's total roundwood output. Pulpwood production accounted for 39 percent of the total roundwood output.

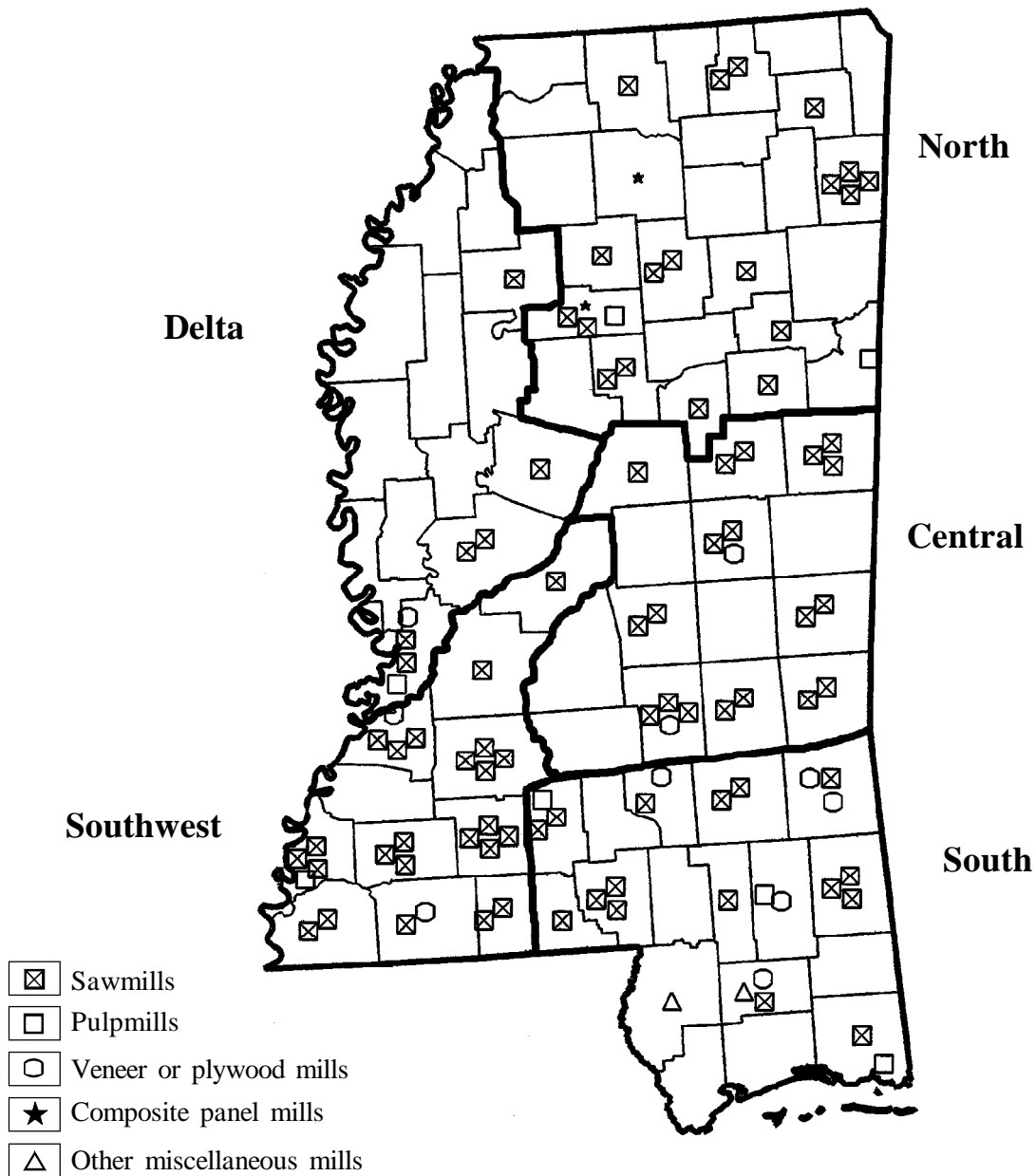


Figure 11—Primary wood-using mills by region, 1995.

- The 23 mills operating in the North region in 1995 included 2 pulpmills, 19 sawmills, and 2 composite panel mills.

Central Region

- Roundwood output from the Central region totaled 293 million cubic feet. Roundwood production accounted for 28 percent of the State's total roundwood TPO.
- Pulpwood production of 120 million cubic feet accounted for 41 percent of the region's total TPO. Saw-log production of 147 million cubic feet accounted for another 50 percent of the roundwood output.
- The 21 primary wood-using plants operating in the Central region included 19 sawmills and 2 veneer or plywood mills.

South Region

- Roundwood output from the South region totaled 253 million cubic feet, and accounted for 24 percent of the State's total TPO.
- Saw-log production of 119 million cubic feet accounted for 47 percent of the region's total roundwood output. Production of pulpwood accounted for 43 percent of the total roundwood output.
- Twenty-six primary wood-using plants were operating: 3 pulpmills, 16 sawmills, 5 veneer or plywood mills, and 2 other miscellaneous mills.

Southwest Region

- Roundwood output from the Southwest region totaled 187 million cubic feet, or 18 percent of the State's total.
- Saw-log production totaled 78 million cubic feet and accounted for 42 percent of the region's total roundwood output. Pulpwood production accounted for 52 percent of the region's total TPO.
- Twenty-seven primary wood-using plants were operating: 1 pulpmill, 24 sawmills, and 2 veneer or plywood mills.

References

- Bertelson, Daniel F.** 1973. Mississippi forest industries, 1972. Resour. Bull. SO-43. New Orleans, LA: U.S. Department of Agriculture, Forest Service, Southern Forest Experiment Station. 27 p. [1972].
- Bertelson, Daniel F.** 1978. Mississippi forest industries, 1976. Resour. Bull. SO-68. New Orleans, LA: U.S. Department of Agriculture, Forest Service, Southern Forest Experiment Station. 25 p. [1976].
- Duerr, William A.** 1949. Forest statistics for Mississippi. Forest Survey Release 59. New Orleans, LA: U.S. Department of Agriculture, Forest Service, Southern Forest Experiment Station. 67 p. [1946].
- Van Hooser, Dwane D.** 1968. Mississippi forest industry. Resour. Bull. SO-12. New Orleans, LA: U.S. Department of Agriculture, Forest Service, Southern Forest Experiment Station. 25 p. [1966].
- Wheeler, Philip R.** 1958. Mississippi forests. Forest Survey Release 81. New Orleans, LA: U.S. Department of Agriculture, Forest Service, Southern Forest Experiment Station. 52 p. [1956].

Definitions

Board foot. Unit of measure applied to roundwood. It relates to lumber that is 1-foot long, 1-foot wide, and 1-inch thick (or its equivalent).

Composite panels. Consists of structural panels (oriented strand board or waferboard) or particleboard (industrial underlayment, thin panelboard).

Consumption. The quantity of a commodity, such as pulpwood, utilized.

Drain. The volume of roundwood removed from any geographic area where timber is grown.

Exports. The volume of roundwood used by mills outside the State where timber was cut.

Imports. The volume of roundwood delivered to a mill or group of mills in a specific State but harvested outside that State.

Industrial fuelwood. A roundwood product, with or without bark, used to generate energy at a manufacturing facility such as a wood-using mill.

Industrial roundwood products. Any primary use of the main stem of a tree, such as saw logs, veneer logs, pulpwood, poles, pilings, or posts.

Log. A primary forest product harvested in long, primarily 8-foot, lengths.

Plant residues. Wood material generated in the production of timber products at primary manufacturing plants.

Coarse residues. Suitable for chipping such as slabs, edgings, trim, veneer cores, and ends.

Fine residues. Not suitable for chipping such as sawdust, shavings, and veneer clippings.

Primary wood-using plants. Industries that receive roundwood or chips from roundwood for the manufacture of products such as lumber, veneer, and pulp.

Production. The total volume of roundwood harvested from land within the specified State, regardless of where consumed. Production is the sum of timber harvested and used within the State, plus all roundwood exported to other States.

Pulpwood. A roundwood product that will be reduced to individual wood fibers by chemical or mechanical means. The fibers are used to make a broad generic group of pulp products that includes paper products as well as chipboard, fiberboard, insulating board, and paperboard.

Receipts. The quantity or volume of industrial roundwood received at a mill or by a group of mills in a State, regardless of the geographic source. Volume of roundwood receipts is equal to the volume of roundwood retained in a State plus roundwood imported from other States.

Retained. Roundwood volume harvested from and processed by mills within the same State.

Roundwood. Logs, bolts, or other round sections cut from trees for industrial manufacture or consumer use.

Roundwood chipped. Any timber cut primarily for industrial manufacture, delivered to nonpulpmills, chipped, and then sold to pulp mills for use as fiber. Includes tops, jump sections, and whole trees.

Roundwood product drain. That portion of total drain used for a product.

Saw log. A log meeting minimum standards of diameter, length, and defect, including logs at least 8 feet long, sound and straight, and with minimum diameter inside bark of 6 inches for softwoods and 8 inches for hardwoods.

Standard cord. A unit measure applied to roundwood, usually bolts or split wood. It relates to a stack of wood 4 feet high, 4 feet wide, and 8 feet long encompassing 128 cubic feet of wood, bark, and air space. In the South, this usually translates to approximately 75.0 cubic feet of solid wood for pulpwood, because pulpwood is more uniform.

Timber products output. Roundwood production from an area's forests (equals roundwood product drain).

Timber removals. The merchantable volume of trees removed from the timberland inventory by harvesting, cultural operations such as stand improvement, land clearing, or changes in land use.

Veneer log. A log to be used in the production of plywood, finished panels, or veneer sheets, both rotary cut and sliced.

Conversion Factors^a

Saw logs

| | |
|----------|---|
| Softwood | 0.18393 cubic foot = 1 board foot 5.44 board feet = 1 cubic foot |
| Hardwood | 0.17597 cubic foot = 1 board foot 5.68 board feet = 1 cubic foot |

Veneer logs

| | |
|----------|---|
| Softwood | 0.16260 cubic foot = 1 board foot 6.15 board feet = 1 cubic foot |
| Hardwood | 0.16394 cubic foot = 1 board foot 6.10 board feet = 1 cubic foot |

Pulpwood^b

| | |
|----------|--------------------------|
| Softwood | 72.6 cubic feet per cord |
| Hardwood | 76.4 cubic feet per cord |

^a Conversion factors vary with stem size (d.b.h.) and species.

^b Cubic feet of solid wood per cord.

Index of Tables

1. Output and receipts of industrial products by product and species group, Mississippi, 1995
2. Number of primary wood-using plants by industry, Mississippi, 1946-1995
3. Roundwood receipts by sawmill size, Mississippi, 1995
4. Roundwood receipts by species and type of mill, Mississippi, 1995
5. Industrial roundwood movement by product and species group, Mississippi, 1995
6. Saw-log volume by destination, source, and species group, Mississippi, 1995
7. Veneer volume by destination, source, and species group, Mississippi, 1995
8. Pulpwood volume by destination, source, and species group, Mississippi, 1995
9. Composite panel volume by destination, source, and species group, Mississippi, 1995
10. Other industrial volume by destination, source, and species group, Mississippi, 1995
11. Primary mill residue volume by roundwood type, species group, and residue type, Mississippi, 1995
12. Disposal of residue at primary wood-using plants by product, species group, and type of residue, Mississippi, 1995
13. Roundwood timber products output by county, product, and species group, Delta Region of Mississippi, 1995
14. Roundwood timber products output by county, product, and species group, North Region of Mississippi, 1995
15. Roundwood timber products output by county, product, and species group, Central Region of Mississippi, 1995
16. Roundwood timber products output by county, product, and species group, South Region of Mississippi, 1995
17. Roundwood timber products output by county, product, and species group, Southwest Region of Mississippi, 1995

**Table 1—Output and receipts of industrial products
by product and species group, Mississippi, 1995**

| Product and species group | Production | Receipts |
|------------------------------|----------------------------|----------------|
| | <i>Thousand cubic feet</i> | |
| Saw logs | | |
| Softwood | 406,154 | 432,205 |
| Hardwood | <u>86,628</u> | <u>92,491</u> |
| Total | 492,782 | 524,696 |
| Veneer logs | | |
| Softwood | 57,510 | 70,069 |
| Hardwood | <u>5,559</u> | <u>5,192</u> |
| Total | 63,069 | 75,261 |
| Pulpwood^a | | |
| Softwood | 208,192 | 147,817 |
| Hardwood | <u>245,523</u> | <u>105,479</u> |
| Total | 453,715 | 253,296 |
| Composite panels | | |
| Softwood | 12,415 | 12,421 |
| Hardwood | <u>10,603</u> | <u>10,610</u> |
| Total | 23,018 | 23,031 |
| Other industrial | | |
| Softwood | 1,451 | 1,412 |
| Hardwood | <u>0</u> | <u>0</u> |
| Total | 1,451 | 1,412 |
| All industrial | | |
| Softwood | 685,722 | 663,924 |
| Hardwood | <u>348,313</u> | <u>213,772</u> |
| Total | <u>1,034,035</u> | <u>877,696</u> |
| Byproduct output | | |
| Softwood | 288,931 | |
| Hardwood | <u>68,520</u> | |
| Total | <u>357,451</u> | |
| Total output | | |
| Softwood | 974,653 | |
| Hardwood | <u>416,833</u> | |
| Total | <u>1,391,486</u> | |

^a Production includes roundwood delivered to nonpulpmills and then chipped and sold to pulpmills (3,443,000 cubic feet in 1995). Receipts include roundwood delivered to nonpulpmills and then chipped and sold to pulpmills (4,501,000 cubic feet in 1995).

Table 2—Number of wood-using plants by industry, Mississippi, 1946-1995

| Industry | Year | | | | | | |
|-------------------------|--------|--------|------|------|------|------|------|
| | 1946 | 1956 | 1962 | 1966 | 1972 | 1976 | 1995 |
| Sawmills | >2,000 | >1,000 | 290 | 350 | 241 | 218 | 84 |
| Veneer or plywood mills | 30 | 28 | 24 | 22 | 16 | 13 | 10 |
| Pulpmills | 6 | 6 | 6 | 7 | 8 | 7 | 7 |
| Composite panel mills | 0 | 0 | 0 | 0 | 0 | 0 | 2 |
| Other mills | 60 | 54 | 64 | 74 | 50 | 55 | 2 |
| All plants | 2,096 | 1,088 | 384 | 453 | 315 | 293 | 105 |

Table 3—Roundwood receipts by sawmill size, Mississippi, 1995

| Sawmill size class ^a | Number of mills | Thousand board feet | Percent of volume |
|---------------------------------|-----------------|---------------------|-------------------|
| <i>Million board feet</i> | | | |
| < 1.0 | 2 | 1,247 | 0 |
| 1.0 - 4.99 | 13 | 44,732 | 2 |
| 5.0 - 9.99 | 17 | 123,017 | 4 |
| 10.0 - 49.99 | 37 | 885,418 | 31 |
| > 50 | 15 | 1,820,077 | 63 |
| Total | 84 | 2,874,491 | 100 |

^a Based on volume received as opposed to actual capacity.

Table 4—Roundwood receipts by species and type of mill, Mississippi, 1995

| Species | Type of mill | | | | | | |
|----------------------------|----------------|----------------|---------------|--------------|-----------------------------|------------------------|--------------|
| | All mills | Sawmills | Veneer mills | | OSB and panels ^a | Pulpmills ^b | Other mills |
| | | | Pine plywood | Other veneer | | | |
| <i>Thousand cubic feet</i> | | | | | | | |
| Softwood | | | | | | | |
| Yellow pine | 514,714 | 430,812 | 70,069 | 0 | 12,421 | NA | 1,412 |
| White pine | 0 | 0 | 0 | 0 | 0 | NA | 0 |
| Cedar | 0 | 0 | 0 | 0 | 0 | NA | 0 |
| Cypress | 1,393 | 1,393 | 0 | 0 | 0 | NA | 0 |
| Other softwood | 0 | 0 | 0 | 0 | 0 | NA | 0 |
| Unclassified | 147,817 | 0 | 0 | 0 | 0 | 147,817 | 0 |
| Total softwoods | <u>663,924</u> | <u>432,205</u> | <u>70,069</u> | <u>0</u> | <u>12,421</u> | <u>147,817</u> | <u>1,412</u> |
| Hardwood | | | | | | | |
| Blackgum and tupelo | 13 | 13 | 0 | 0 | 0 | NA | 0 |
| Soft maple | 0 | 0 | 0 | 0 | 0 | NA | 0 |
| Sweetgum | 15,821 | 7,274 | 0 | 1,213 | 7,334 | NA | 0 |
| Yellow-poplar | 10,467 | 8,526 | 903 | 1,038 | 0 | NA | 0 |
| Other soft hardwood | 13,886 | 11,812 | 0 | 241 | 1,833 | NA | 0 |
| Hickory | 1,854 | 1,854 | 0 | 0 | 0 | NA | 0 |
| Red oak | 44,448 | 42,357 | 0 | 1,610 | 481 | NA | 0 |
| White oak | 15,812 | 15,162 | 0 | 169 | 481 | NA | 0 |
| Other hard hardwood | 5,992 | 5,493 | 0 | 18 | 481 | NA | 0 |
| Unclassified | <u>105,479</u> | <u>0</u> | <u>0</u> | <u>0</u> | <u>0</u> | <u>105,479</u> | <u>0</u> |
| Total hardwoods | <u>213,772</u> | <u>92,491</u> | <u>903</u> | <u>4,289</u> | <u>10,610</u> | <u>105,479</u> | <u>0</u> |
| All species | <u>877,696</u> | <u>524,696</u> | <u>70,972</u> | <u>4,289</u> | <u>23,031</u> | <u>253,296</u> | <u>1,412</u> |

NA = not applicable.

^a OSB = oriented strand board.

^b Only collected by softwood and hardwood and includes roundwood chipped.

Table 5—Industrial roundwood movement by product and species group, Mississippi, 1995

| Product and species group | Production | Exported to other States | Retained | Imported from other States | Receipts |
|-----------------------------|------------------|--------------------------|----------------|----------------------------|----------------|
| <i>Thousand cubic feet</i> | | | | | |
| Saw logs | | | | | |
| Softwood | 406,154 | 33,784 | 372,370 | 59,835 | 432,205 |
| Hardwood | <u>86,628</u> | <u>10,788</u> | <u>75,840</u> | <u>16,651</u> | <u>92,491</u> |
| Total | 492,782 | 44,572 | 448,210 | 76,486 | 524,696 |
| Veneer logs | | | | | |
| Softwood | 57,510 | 2 | 57,508 | 12,561 | 70,069 |
| Hardwood | <u>5,559</u> | <u>1,483</u> | <u>4,076</u> | <u>1,116</u> | <u>5,192</u> |
| Total | 63,069 | 1,485 | 61,584 | 13,677 | 75,261 |
| Pulpwood^a | | | | | |
| Softwood | 208,192 | 91,122 | 117,070 | 30,747 | 147,817 |
| Hardwood | <u>245,523</u> | <u>152,546</u> | <u>92,977</u> | <u>12,502</u> | <u>105,479</u> |
| Total | 453,715 | 243,668 | 210,047 | 43,249 | 253,296 |
| Composite panels | | | | | |
| Softwood | 12,415 | 0 | 12,415 | 6 | 12,421 |
| Hardwood | <u>10,603</u> | <u>0</u> | <u>10,603</u> | <u>7</u> | <u>10,610</u> |
| Total | 23,018 | 0 | 23,018 | 13 | 23,031 |
| Other industrial | | | | | |
| Softwood | 1,451 | 158 | 1,293 | 119 | 1,412 |
| Hardwood | <u>0</u> | <u>0</u> | <u>0</u> | <u>0</u> | <u>0</u> |
| Total | 1,451 | 158 | 1,293 | 119 | 1,412 |
| All products | | | | | |
| Softwood | 685,722 | 125,066 | 560,656 | 103,268 | 663,924 |
| Hardwood | <u>348,313</u> | <u>164,817</u> | <u>183,496</u> | <u>30,276</u> | <u>213,772</u> |
| Total | <u>1,034,035</u> | <u>289,883</u> | <u>744,152</u> | <u>133,544</u> | <u>877,696</u> |

^a Includes roundwood chipped.

Table 6—Saw-log volume by destination, source, and species group, Mississippi, 1995

| Destination and source | All species | Species group | |
|-------------------------------|-------------|---------------|----------|
| | | Softwood | Hardwood |
| <i>Thousand cubic feet</i> | | | |
| Mississippi (retained) | 448,210 | 372,370 | 75,840 |
| Exports to: | | | |
| Alabama | 26,530 | 22,476 | 4,054 |
| Arkansas | 518 | 0 | 518 |
| Louisiana | 12,105 | 11,308 | 797 |
| South Carolina | 7 | 0 | 7 |
| Tennessee | 5,412 | 0 | 5,412 |
| Total | 44,572 | 33,784 | 10,788 |
| Imports from: | | | |
| Alabama | 41,905 | 39,255 | 2,650 |
| Arkansas | 186 | 10 | 176 |
| Louisiana | 31,246 | 19,345 | 11,901 |
| Tennessee | 3,149 | 1,225 | 1,924 |
| Total | 76,486 | 59,835 | 16,651 |

Table 7—Veneer volume by destination, source, and species group, Mississippi, 1995

| Destination and source | All species | Species group | |
|-------------------------------|-------------|---------------|----------|
| | | Softwood | Hardwood |
| <i>Thousand cubic feet</i> | | | |
| Mississippi (retained) | 61,584 | 57,508 | 4,076 |
| Exports to: | | | |
| Alabama | 162 | 0 | 162 |
| Arkansas | 1,302 | 0 | 1,302 |
| Indiana | 21 | 2 | 19 |
| Total | 1,485 | 2 | 1,483 |
| Imports from: | | | |
| Alabama | 8,203 | 7,751 | 452 |
| Louisiana | 5,474 | 4,810 | 664 |
| Total | 13,677 | 12,561 | 1,116 |

Table 8—Pulpwood volume by destination, source, and species group, Mississippi, 1995

| Destination and source | All species | Species group | |
|-------------------------------|-------------|---------------|----------|
| | | Softwood | Hardwood |
| <i>Thousand cubic feet</i> | | | |
| Mississippi (retained) | 210,047 | 117,070 | 92,977 |
| Exports to: | | | |
| Alabama | 128,854 | 35,124 | 93,730 |
| Arkansas | 15 | 0 | 15 |
| Florida | 264 | 206 | 58 |
| Georgia | 249 | 0 | 249 |
| Kentucky | 3,666 | 1,079 | 2,587 |
| Louisiana | 94,773 | 42,999 | 51,774 |
| Tennessee | 15,830 | 11,714 | 4,116 |
| Texas | 17 | 0 | 17 |
| Total | 243,668 | 91,122 | 152,546 |
| Imports from: | | | |
| Alabama | 26,390 | 22,552 | 3,838 |
| Arkansas | 588 | 0 | 588 |
| Louisiana | 15,762 | 8,195 | 7,567 |
| Tennessee | 509 | 0 | 509 |
| Total | 43,249 | 30,747 | 12,502 |

Table 9—Composite panel volume by destination, source, and species group, Mississippi, 1995

| Destination and source | All species | Species group | |
|-------------------------------|-------------|---------------|----------|
| | | Softwood | Hardwood |
| <i>Thousand cubic feet</i> | | | |
| Mississippi (retained) | 23,018 | 12,415 | 10,603 |
| Imports from: | | | |
| Alabama | 13 | 6 | 7 |
| Total | 13 | 6 | 7 |

Table 10—Other industrial volume by destination, source, and species group, Mississippi, 1995^a

| Destination and source | All species | Species group | |
|-------------------------------|-------------|---------------|----------|
| | | Softwood | Hardwood |
| <i>Thousand cubic feet</i> | | | |
| Mississippi (retained) | 1,293 | 1,293 | 0 |
| Exports to: | | | |
| Alabama | 158 | 158 | 0 |
| Total | 158 | 158 | 0 |
| Imports from: | | | |
| Alabama | 119 | 119 | 0 |
| Total | 119 | 119 | 0 |

^a Includes poles, posts, mulch, firewood, log homes, charcoal, and all other industrial mills.

Table 11—Primary mill residue volume by roundwood type, species group, and residue type, Mississippi, 1995

| Roundwood type and species group | All types | Residue type | | | |
|-------------------------------------|-----------|--------------|---------|---------|----------|
| | | Bark | Coarse | Sawdust | Shavings |
| <i>Thousand cubic feet</i> | | | | | |
| Saw logs | | | | | |
| Softwood | 232,078 | 38,087 | 99,538 | 62,973 | 31,480 |
| Hardwood | 50,192 | 10,264 | 19,326 | 18,849 | 1,753 |
| Total | 282,270 | 48,351 | 118,864 | 81,822 | 33,233 |
| Veneer logs | | | | | |
| Softwood | 42,987 | 6,970 | 17,020 | 18,997 | 0 |
| Hardwood | 3,774 | 619 | 1,556 | 1,599 | 0 |
| Total | 46,761 | 7,589 | 18,576 | 20,596 | 0 |
| Pulpwood | | | | | |
| Softwood | 15,024 | 15,024 | 0 | 0 | 0 |
| Hardwood | 13,022 | 13,022 | 0 | 0 | 0 |
| Total | 28,046 | 28,046 | 0 | 0 | 0 |
| Composite panels | | | | | |
| Softwood | 2,775 | 2,775 | 0 | 0 | 0 |
| Hardwood | 2,713 | 2,713 | 0 | 0 | 0 |
| Total | 5,488 | 5,488 | 0 | 0 | 0 |
| Other industrial^a | | | | | |
| Softwood | 2,673 | 1,554 | 1,119 | 0 | 0 |
| Hardwood | 0 | 0 | 0 | 0 | 0 |
| Total | 2,673 | 1,554 | 1,119 | 0 | 0 |
| Total | | | | | |
| Softwood | 295,537 | 64,410 | 117,677 | 81,970 | 31,480 |
| Hardwood | 69,701 | 26,618 | 20,882 | 20,448 | 1,753 |
| Total | 365,238 | 91,028 | 138,559 | 102,418 | 33,233 |

^a Includes poles, pilings, posts, and other industrial products

Table 12—Disposal of residue at primary wood-using plants by product, species group, and type of residue, Mississippi, 1995

| Product and species group | All types | Residue type | | | |
|----------------------------|-----------|--------------|---------|---------|----------|
| | | Bark | Coarse | Sawdust | Shavings |
| <i>Thousand cubic feet</i> | | | | | |
| Fiber products | | | | | |
| Softwood | 109,819 | 0 | 109,819 | 0 | 0 |
| Hardwood | 19,915 | 0 | 19,915 | 0 | 0 |
| Total | 129,734 | 0 | 129,734 | 0 | 0 |
| Particleboard | | | | | |
| Softwood | 679 | 0 | 679 | 0 | 0 |
| Hardwood | 244 | 0 | 244 | 0 | 0 |
| Total | 923 | 0 | 923 | 0 | 0 |
| Composite panels | | | | | |
| Softwood | 0 | 0 | 0 | 0 | 0 |
| Hardwood | 0 | 0 | 0 | 0 | 0 |
| Total | 0 | 0 | 0 | 0 | 0 |
| Sawn products | | | | | |
| Softwood | 883 | 0 | 883 | 0 | 0 |
| Hardwood | 39 | 0 | 39 | 0 | 0 |
| Total | 922 | 0 | 922 | 0 | 0 |
| Fuel | | | | | |
| Softwood | 140,572 | 53,206 | 5,116 | 64,827 | 17,423 |
| Hardwood | 44,166 | 25,468 | 684 | 17,066 | 948 |
| Total | 184,738 | 78,674 | 5,800 | 81,893 | 18,371 |
| Miscellaneous | | | | | |
| Softwood | 36,978 | 10,493 | 423 | 12,129 | 13,933 |
| Hardwood | 4,156 | 998 | 0 | 2,353 | 805 |
| Total | 41,134 | 11,491 | 423 | 14,482 | 14,738 |
| Not used | | | | | |
| Softwood | 6,606 | 711 | 757 | 5,014 | 124 |
| Hardwood | 1,181 | 152 | 0 | 1,029 | 0 |
| Total | 7,787 | 863 | 757 | 6,043 | 124 |
| All products | | | | | |
| Softwood | 295,537 | 64,410 | 117,677 | 81,970 | 31,480 |
| Hardwood | 69,701 | 26,618 | 20,882 | 20,448 | 1,753 |
| Total | 365,238 | 91,028 | 138,559 | 102,418 | 33,233 |

**Table 13—Roundwood timber products output by county, product, and species group,
Delta Region of Mississippi, 1995**

| County | All products | | Saw logs | | Veneer logs | | Pulpwood | | Composite panel | | Other industrial | |
|----------------------------|--------------|-----------|-----------|-----------|-------------|-----------|-----------|-----------|-----------------|-----------|------------------|-----------|
| | Soft-wood | Hard-wood | Soft-wood | Hard-wood | Soft-wood | Hard-wood | Soft-wood | Hard-wood | Soft-wood | Hard-wood | Soft-wood | Hard-wood |
| <i>Thousand cubic feet</i> | | | | | | | | | | | | |
| Bolivar | 19 | 624 | 19 | 164 | 0 | 0 | 0 | 460 | 0 | 0 | 0 | 0 |
| Coahoma | 31 | 558 | 22 | 194 | 0 | 364 | 9 | 0 | 0 | 0 | 0 | 0 |
| Holmes | 5,657 | 8,411 | 3,832 | 1,293 | 0 | 0 | 1,564 | 6,843 | 261 | 275 | 0 | 0 |
| Humphreys | 178 | 2,206 | 69 | 266 | 0 | 0 | 109 | 1,940 | 0 | 0 | 0 | 0 |
| Issaquena | 306 | 4,354 | 0 | 970 | 0 | 120 | 306 | 3,264 | 0 | 0 | 0 | 0 |
| Leflore | 2,723 | 1,898 | 1,932 | 0 | 0 | 0 | 7 | 1,073 | 784 | 825 | 0 | 0 |
| Quitman | 697 | 946 | 0 | 202 | 0 | 0 | 0 | 11 | 697 | 733 | 0 | 0 |
| Sharkey | 230 | 4,091 | 130 | 1,467 | 0 | 120 | 100 | 2,504 | 0 | 0 | 0 | 0 |
| Sunflower | 0 | 163 | 0 | 0 | 0 | 0 | 0 | 163 | 0 | 0 | 0 | 0 |
| Tallahatchie | 3,223 | 3,505 | 1,937 | 975 | 0 | 120 | 328 | 1,402 | 958 | 1,008 | 0 | 0 |
| Tunica | 0 | 1,081 | 0 | 518 | 0 | 559 | 0 | 4 | 0 | 0 | 0 | 0 |
| Warren | 488 | 7,021 | 65 | 879 | 0 | 244 | 423 | 5,898 | 0 | 0 | 0 | 0 |
| Washington | 5 | 348 | 0 | 0 | 0 | 0 | 5 | 348 | 0 | 0 | 0 | 0 |
| Yazoo | 4,411 | 10,891 | 3,629 | 3,701 | 0 | 402 | 782 | 6,788 | 0 | 0 | 0 | 0 |
| All counties | 17,968 | 46,097 | 11,635 | 10,629 | 0 | 1,929 | 3,633 | 30,698 | 2,700 | 2,841 | 0 | 0 |

**Table 14—Roundwood timber products output by county, product, and species group,
North Region of Mississippi, 1995**

| County | All products | | Saw logs | | Veneer logs | | Pulpwood ^a | | Composite panel | | Other industrial | |
|----------------------------|--------------|-----------|-----------|-----------|-------------|-----------|-----------------------|-----------|-----------------|-----------|------------------|-----------|
| | Soft-wood | Hard-wood | Soft-wood | Hard-wood | Soft-wood | Hard-wood | Soft-wood | Hard-wood | Soft-wood | Hard-wood | Soft-wood | Hard-wood |
| <i>Thousand cubic feet</i> | | | | | | | | | | | | |
| Alcorn | 2,259 | 3,210 | 1,359 | 829 | 0 | 0 | 900 | 2,381 | 0 | 0 | 0 | 0 |
| Benton | 2,031 | 4,246 | 1,083 | 2,666 | 0 | 0 | 577 | 1,436 | 371 | 144 | 0 | 0 |
| Calhoun | 7,922 | 2,901 | 4,306 | 1,291 | 0 | 0 | 2,461 | 641 | 1,155 | 969 | 0 | 0 |
| Carroll | 4,816 | 2,792 | 3,491 | 750 | 368 | 0 | 783 | 1,859 | 174 | 183 | 0 | 0 |
| Chickasaw | 6,468 | 1,805 | 4,781 | 1,640 | 0 | 0 | 1,687 | 165 | 0 | 0 | 0 | 0 |
| Choctaw | 11,942 | 8,448 | 7,593 | 1,689 | 633 | 0 | 3,368 | 6,393 | 348 | 366 | 0 | 0 |
| Clay | 7,337 | 2,195 | 5,831 | 504 | 0 | 0 | 1,506 | 1,691 | 0 | 0 | 0 | 0 |
| De Soto | 31 | 1,902 | 8 | 1,830 | 0 | 0 | 23 | 72 | 0 | 0 | 0 | 0 |
| Grenada | 5,492 | 5,181 | 3,965 | 345 | 0 | 0 | 547 | 4,050 | 980 | 786 | 0 | 0 |
| Itawamba | 5,308 | 3,497 | 2,833 | 857 | 0 | 0 | 2,475 | 2,640 | 0 | 0 | 0 | 0 |
| Lafayette | 10,230 | 3,567 | 6,047 | 1,510 | 0 | 0 | 3,116 | 1,180 | 1,067 | 877 | 0 | 0 |
| Lee | 2,657 | 89 | 1,863 | 0 | 0 | 0 | 794 | 89 | 0 | 0 | 0 | 0 |
| Lowndes | 6,180 | 3,404 | 4,545 | 1,066 | 0 | 0 | 1,635 | 2,338 | 0 | 0 | 0 | 0 |
| Marshall | 4,233 | 6,289 | 3,044 | 2,521 | 0 | 0 | 818 | 3,624 | 371 | 144 | 0 | 0 |
| Monroe | 6,811 | 5,151 | 4,234 | 1,724 | 0 | 0 | 2,577 | 3,427 | 0 | 0 | 0 | 0 |
| Montgomery | 7,577 | 4,092 | 5,606 | 452 | 0 | 0 | 1,274 | 2,907 | 697 | 733 | 0 | 0 |
| Oktibbeha | 12,640 | 2,509 | 10,087 | 877 | 396 | 0 | 2,157 | 1,632 | 0 | 0 | 0 | 0 |
| Panola | 6,406 | 4,023 | 5,318 | 381 | 0 | 377 | 282 | 2,663 | 806 | 602 | 0 | 0 |
| Pontotoc | 7,615 | 2,357 | 5,641 | 1,497 | 0 | 0 | 1,603 | 716 | 371 | 144 | 0 | 0 |
| Prentiss | 3,158 | 5,064 | 1,642 | 1,459 | 0 | 0 | 1,516 | 3,605 | 0 | 0 | 0 | 0 |
| Tate | 431 | 245 | 0 | 0 | 0 | 0 | 60 | 101 | 371 | 144 | 0 | 0 |
| Tippah | 3,297 | 3,662 | 598 | 745 | 0 | 0 | 2,699 | 2,917 | 0 | 0 | 0 | 0 |
| Tishomingo | 4,910 | 5,452 | 1,737 | 1,782 | 2 | 19 | 3,171 | 3,651 | 0 | 0 | 0 | 0 |
| Union | 4,560 | 2,275 | 3,719 | 1,058 | 0 | 0 | 470 | 1,073 | 371 | 144 | 0 | 0 |
| Webster | 5,849 | 2,624 | 3,979 | 1,176 | 0 | 0 | 1,435 | 990 | 435 | 458 | 0 | 0 |
| Yalobusha | 6,754 | 2,622 | 4,303 | 804 | 0 | 0 | 1,558 | 1,124 | 893 | 694 | 0 | 0 |
| All counties | 146,914 | 89,602 | 97,613 | 29,453 | 1,399 | 396 | 39,492 | 53,365 | 8,410 | 6,388 | 0 | 0 |

^a Includes roundwood that was delivered to nonpulp mills and then chipped and sold to pulp mills (1,033,000 cubic feet in 1995).

**Table 15—Roundwood timber products output by county, product, and species group,
Central Region of Mississippi, 1995**

| County | All products | | Saw logs | | Veneer logs | | Pulpwood ^a | | Composite panel | | Other industrial | |
|----------------------------|----------------|---------------|----------------|---------------|---------------|--------------|-----------------------|---------------|-----------------|--------------|------------------|-----------|
| | Soft-wood | Hard-wood | Soft-wood | Hard-wood | Soft-wood | Hard-wood | Soft-wood | Hard-wood | Soft-wood | Hard-wood | Soft-wood | Hard-wood |
| <i>Thousand cubic feet</i> | | | | | | | | | | | | |
| Attala | 14,964 | 8,189 | 8,881 | 2,273 | 633 | 0 | 4,928 | 5,366 | 522 | 550 | 0 | 0 |
| Clarke | 15,591 | 12,482 | 6,863 | 671 | 2,445 | 259 | 6,271 | 11,552 | 0 | 0 | 12 | 0 |
| Jasper | 12,133 | 3,463 | 6,216 | 625 | 3,529 | 121 | 2,387 | 2,717 | 0 | 0 | 1 | 0 |
| Kemper | 24,855 | 10,676 | 16,653 | 919 | 1,615 | 31 | 6,586 | 9,726 | 0 | 0 | 1 | 0 |
| Lauderdale | 12,882 | 6,199 | 7,534 | 765 | 1,432 | 46 | 3,870 | 5,388 | 0 | 0 | 46 | 0 |
| Leake | 15,460 | 5,718 | 8,557 | 1,021 | 1,484 | 39 | 5,419 | 4,658 | 0 | 0 | 0 | 0 |
| Neshoba | 14,331 | 6,404 | 9,022 | 391 | 1,855 | 54 | 3,454 | 5,959 | 0 | 0 | 0 | 0 |
| Newton | 9,283 | 4,357 | 4,749 | 475 | 1,776 | 54 | 2,746 | 3,828 | 0 | 0 | 12 | 0 |
| Noxubee | 16,380 | 4,312 | 13,204 | 1,172 | 713 | 0 | 2,115 | 2,774 | 348 | 366 | 0 | 0 |
| Rankin | 14,976 | 7,632 | 9,210 | 3,789 | 1,538 | 445 | 4,228 | 3,398 | 0 | 0 | 0 | 0 |
| Scott | 10,514 | 3,629 | 6,048 | 556 | 1,325 | 39 | 3,141 | 3,034 | 0 | 0 | 0 | 0 |
| Simpson | 15,580 | 4,553 | 9,192 | 1,723 | 2,325 | 182 | 4,063 | 2,648 | 0 | 0 | 0 | 0 |
| Smith | 12,786 | 1,646 | 8,340 | 437 | 1,895 | 50 | 2,550 | 1,159 | 0 | 0 | 1 | 0 |
| Winston | 19,734 | 4,551 | 16,047 | 1,262 | 475 | 0 | 2,777 | 2,831 | 435 | 458 | 0 | 0 |
| All counties | 209,469 | 83,811 | 130,516 | 16,079 | 23,040 | 1,320 | 54,535 | 65,038 | 1,305 | 1,374 | 73 | 0 |

^a Includes roundwood that was delivered to nonpulpmills and then chipped and sold to pulpmills (444,000 cubic feet in 1995).

Table 16—Roundwood timber products output by county, product, and species group, South Region of Mississippi, 1995

| County | All products | | Saw logs | | Veneer logs | | Pulpwood ^a | | Composite panel | | Other industrial | |
|----------------------------|--------------|-----------|-----------|-----------|-------------|-----------|-----------------------|-----------|-----------------|-----------|------------------|-----------|
| | Soft-wood | Hard-wood | Soft-wood | Hard-wood | Soft-wood | Hard-wood | Soft-wood | Hard-wood | Soft-wood | Hard-wood | Soft-wood | Hard-wood |
| <i>Thousand cubic feet</i> | | | | | | | | | | | | |
| Covington | 14,948 | 2,858 | 10,081 | 619 | 2,297 | 169 | 2,503 | 2,070 | 0 | 0 | 67 | 0 |
| Forrest | 7,033 | 1,763 | 3,142 | 501 | 912 | 4 | 2,904 | 1,258 | 0 | 0 | 75 | 0 |
| George | 8,789 | 2,363 | 4,271 | 569 | 828 | 4 | 3,623 | 1,790 | 0 | 0 | 67 | 0 |
| Greene | 13,721 | 4,580 | 6,064 | 745 | 743 | 4 | 6,808 | 3,831 | 0 | 0 | 106 | 0 |
| Hancock | 12,173 | 1,963 | 4,080 | 328 | 1,035 | 6 | 6,952 | 1,629 | 0 | 0 | 106 | 0 |
| Harrison | 12,279 | 1,660 | 5,796 | 393 | 1,242 | 7 | 5,125 | 1,260 | 0 | 0 | 116 | 0 |
| Jackson | 11,300 | 1,597 | 4,824 | 465 | 1,242 | 7 | 5,186 | 1,125 | 0 | 0 | 48 | 0 |
| Jefferson Davis | 8,302 | 1,406 | 5,708 | 502 | 557 | 23 | 1,981 | 881 | 0 | 0 | 56 | 0 |
| Jones | 15,205 | 3,408 | 8,413 | 830 | 2,500 | 93 | 4,225 | 2,485 | 0 | 0 | 67 | 0 |
| Lamar | 12,310 | 2,022 | 6,926 | 531 | 2,522 | 29 | 2,766 | 1,462 | 0 | 0 | 96 | 0 |
| Lawrence | 13,781 | 5,146 | 8,023 | 1,371 | 743 | 31 | 5,015 | 3,744 | 0 | 0 | 0 | 0 |
| Marion | 15,242 | 3,392 | 9,358 | 804 | 1,951 | 23 | 3,830 | 2,565 | 0 | 0 | 103 | 0 |
| Pearl River | 16,004 | 5,200 | 8,182 | 328 | 2,471 | 32 | 5,223 | 4,840 | 0 | 0 | 128 | 0 |
| Perry | 6,563 | 1,730 | 3,071 | 341 | 536 | 3 | 2,872 | 1,386 | 0 | 0 | 84 | 0 |
| Stone | 11,035 | 1,523 | 5,788 | 0 | 583 | 2 | 4,561 | 1,521 | 0 | 0 | 103 | 0 |
| Walthall | 12,150 | 2,828 | 9,570 | 708 | 619 | 0 | 1,913 | 2,120 | 0 | 0 | 48 | 0 |
| Wayne | 13,536 | 5,416 | 5,587 | 806 | 2,219 | 86 | 5,622 | 4,524 | 0 | 0 | 108 | 0 |
| All counties | 204,371 | 48,855 | 108,884 | 9,841 | 23,000 | 523 | 71,109 | 38,491 | 0 | 0 | 1,378 | 0 |

^a Includes roundwood that was delivered to nonpulpmills and then chipped and sold to pulpmills (1,472,000 cubic feet in 1995).

Table 17—Roundwood timber products output by county, product, and species group, Southwest Region of Mississippi, 1995

| County | All products | | Saw logs | | Veneer logs | | Pulpwood ^a | | Composite panel | | Other industrial | |
|----------------------------|--------------|-----------|-----------|-----------|-------------|-----------|-----------------------|-----------|-----------------|-----------|------------------|-----------|
| | Soft-wood | Hard-wood | Soft-wood | Hard-wood | Soft-wood | Hard-wood | Soft-wood | Hard-wood | Soft-wood | Hard-wood | Soft-wood | Hard-wood |
| <i>Thousand cubic feet</i> | | | | | | | | | | | | |
| Adams | 1,378 | 7,935 | 24 | 1,587 | 0 | 0 | 1,354 | 6,348 | 0 | 0 | 0 | 0 |
| Amite | 15,036 | 7,136 | 7,745 | 901 | 929 | 0 | 6,362 | 6,235 | 0 | 0 | 0 | 0 |
| Claiborne | 2,182 | 9,101 | 905 | 3,139 | 0 | 346 | 1,277 | 5,616 | 0 | 0 | 0 | 0 |
| Copiah | 19,824 | 9,608 | 9,503 | 3,265 | 2,346 | 401 | 7,975 | 5,942 | 0 | 0 | 0 | 0 |
| Franklin | 11,522 | 8,403 | 6,077 | 1,128 | 1,239 | 150 | 4,206 | 7,125 | 0 | 0 | 0 | 0 |
| Hinds | 6,836 | 8,890 | 4,231 | 2,986 | 0 | 327 | 2,605 | 5,577 | 0 | 0 | 0 | 0 |
| Jefferson | 3,313 | 6,786 | 24 | 1,008 | 309 | 0 | 2,980 | 5,778 | 0 | 0 | 0 | 0 |
| Lincoln | 17,979 | 6,470 | 9,660 | 1,616 | 2,842 | 44 | 5,477 | 4,810 | 0 | 0 | 0 | 0 |
| Madison | 8,258 | 6,480 | 6,139 | 3,103 | 237 | 120 | 1,882 | 3,257 | 0 | 0 | 0 | 0 |
| Pike | 13,762 | 2,897 | 9,115 | 214 | 1,705 | 3 | 2,942 | 2,680 | 0 | 0 | 0 | 0 |
| Wilkinson | 6,910 | 6,242 | 4,083 | 1,679 | 464 | 0 | 2,363 | 4,563 | 0 | 0 | 0 | 0 |
| All counties | 107,000 | 79,948 | 57,506 | 20,626 | 10,071 | 1,391 | 39,423 | 57,931 | 0 | 0 | 0 | 0 |

^a Includes roundwood that was delivered to nonpulpmills and then chipped and sold to pulpmills (494,000 cubic feet in 1995).



The Forest Service, U.S. Department of Agriculture, is dedicated to the principle of multiple use management of the Nation's forest resources for sustained yields of wood, water, forage, wildlife, and recreation. Through forestry research, cooperation with the States and private forest owners, and management of the National Forests and National Grasslands, it strives—as directed by Congress—to provide increasingly greater service to a growing Nation.

The U.S. Department of Agriculture (USDA) prohibits discrimination in all its programs and activities on the basis of race, color, national origin, gender, religion, age, disability, political beliefs, sexual orientation, and marital or family status. (Not all prohibited bases apply to all programs.) Persons with disabilities who require alternative means for communication of program information (Braille, large print, audiotape, etc.) should contact USDA's TARGET Center at 202-720-2600 (voice and TDD). To file a complaint of discrimination, write USDA, Director, Office of Civil Rights, Room 326-W, Whitten Building, 14th and Independence Avenue, SW, Washington, DC 20250-9410 or call 202-720-5964 (voice or TDD). USDA is an equal opportunity provider and employer.

Stratton, Daniel P.; Howell, Michael; Romedy, Randal. 1998. Mississippi's timber industry—an assessment of timber product output and use, 1995. Resour. Bull. SRS-29. Asheville, NC: U.S. Department of Agriculture, Forest Service, Southern Research Station. 23 p.

In 1995, roundwood output from Mississippi's forests totaled 1.0 billion cubic feet. Mill byproducts generated from primary manufacturers was 357 million cubic feet. Almost all plant residue was used primarily for fuel and fiber products. Saw logs were the leading roundwood product at 493 million cubic feet; pulpwood ranked second at 454 million cubic feet; veneer logs were third at 63 million cubic feet. There were 105 primary processing plants operating in Mississippi in 1995. Receipts totaled 878 million cubic feet.

Keywords: Pulpwood, residues, roundwood, saw logs, veneer logs, wood movement.

United States
Department of Agriculture

Forest Service

**Southern
Research Station**
P.O. Box 2680
200 Weaver Blvd.
Asheville, NC 28802

OFFICIAL BUSINESS
Penalty for Private Use \$300

