



EEOICPA Subtitle D

*Presentation to
Advisory Board on Radiation and Worker Health*

Tom Rollow
August 24, 2004



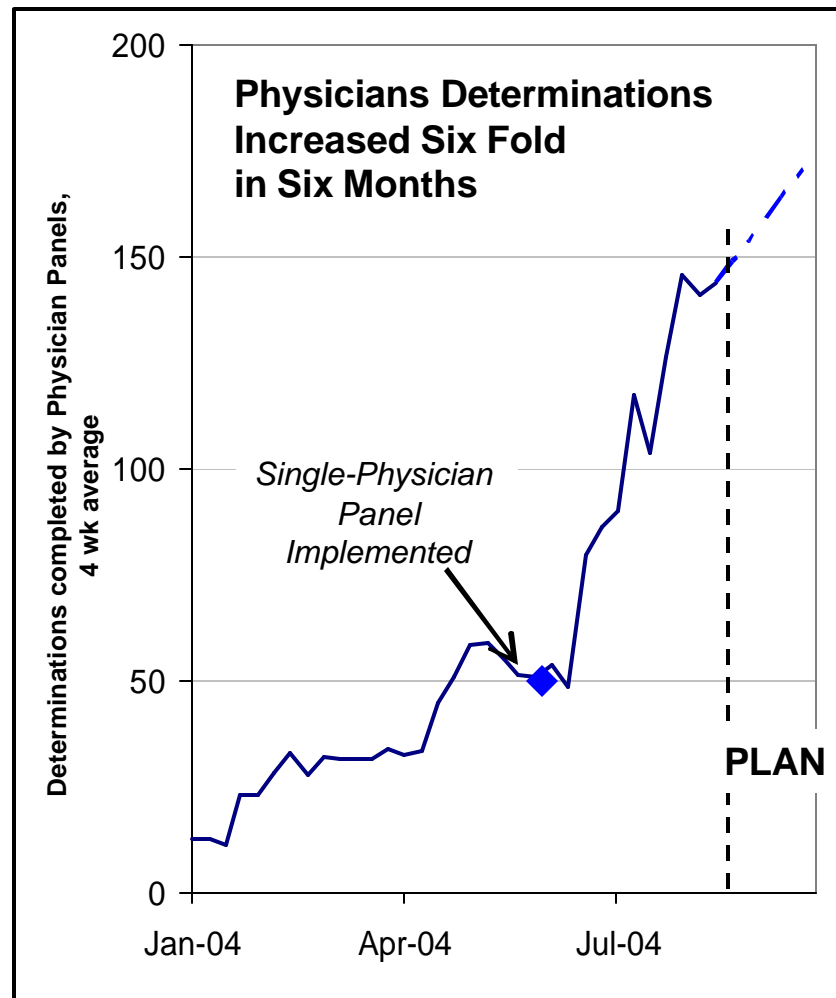
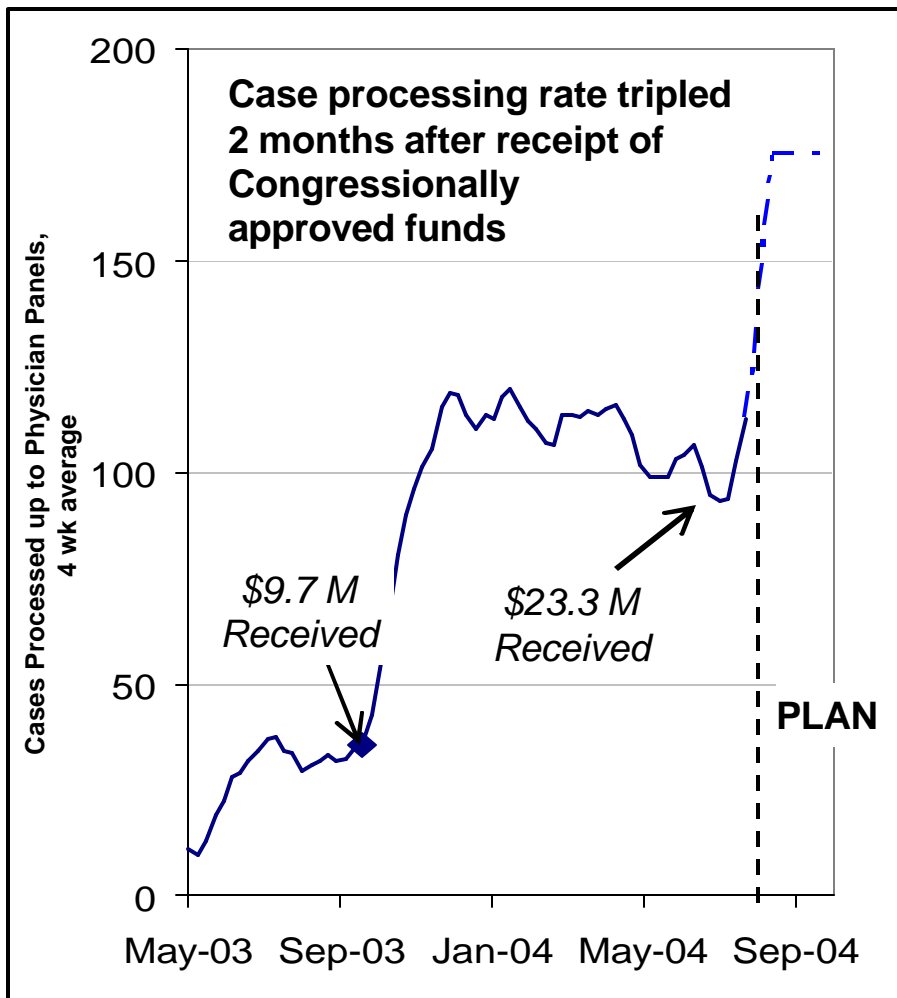
7,000 Cases Processed, 70% in Last Six Months

- DOE already completely processed 3,143 cases
 - 12.6% of total
 - Not 3% as has been claimed
- An additional 3,258 in Physician Panel process
 - DOE processing completed
 - Brings DOE completion rate to 25.6%
- 1,001 completed by DOE, waiting on applicant review
- **DOE processing complete on 29.6%, almost all in last six months**

	<u>w/e 8/13/04</u>	<u>Chg from Prev. Week</u>
Total Cases Received at OWA	25,037	75
Total Cases Completed	3,143	85
Positive Panel Findings (418)		26
Negative Panel Findings (743)		46
Ineligible Applications (1648)		17
Cases Withdrawn by Applicant (334)		(4)
Cases Currently in Physician Panel Process	3,258	0
Cases Awaiting Panel Assignment (1235)		(238)
Cases at Physician Panel (2023)		238
Cases Developed; Awaiting final review by applicant	1,001	27
Cases Being Developed	12,043	247
Cases Under Initial Review (1027)		5
Cases Under Research (10927)		207
Cases Under Construction (89)		35
Cases Awaiting Development	5,592	(284)

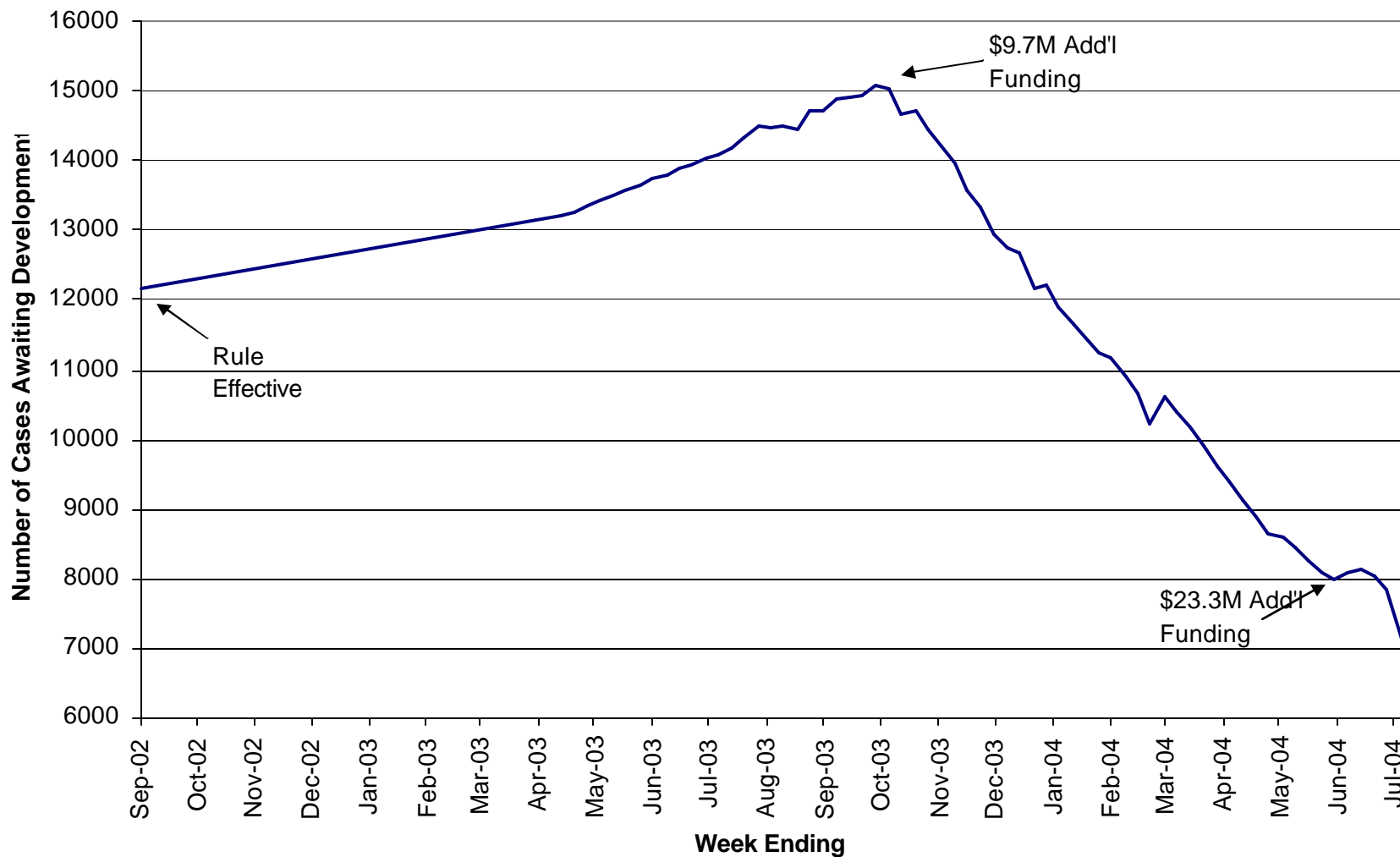


DOE Now on Track





Cases Waiting Processing





DOE's Path Forward is Credible, Comprehensive, and Eliminates the Backlog in 2006

Regulation (10 CFR Part 852)

Done

- Physicians on panels: 3 to 1
- Multiple reviews for negatives

Budget

***Still short \$10M, but
\$23M is a great start***

- '04: \$33M appropriations transfer requested, \$23M provided to date
- '05: \$43M budget request

Legislation

In House NDAA Bill

- Remove physician pay cap
- Expand hiring authority
- Eliminate unnecessary State MOU requirement

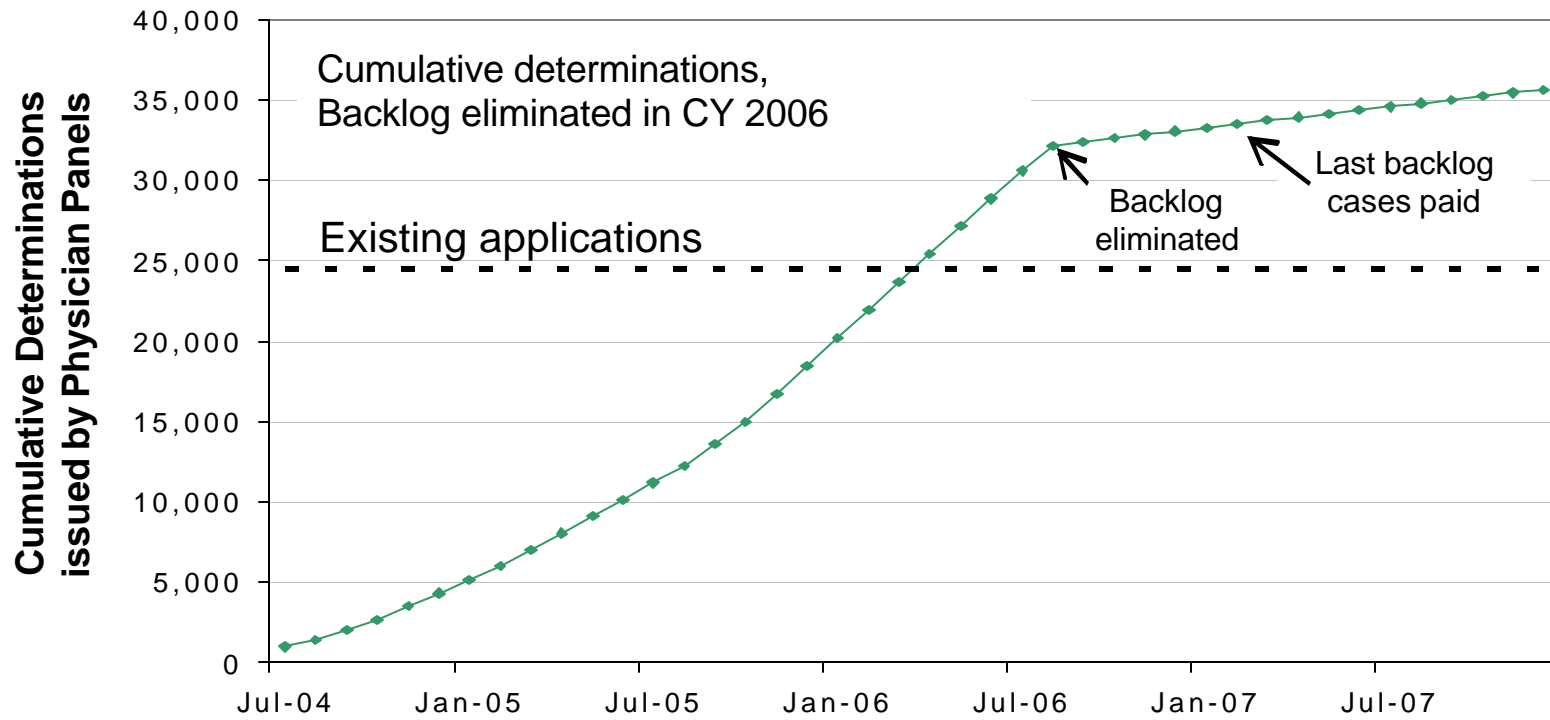
Process changes

Done or in process

- Increased physician recruiting
- Tiger team: process improvements
- Reprioritize: easy cases, medical benefits, dose reconstructions
- Advisory Committee



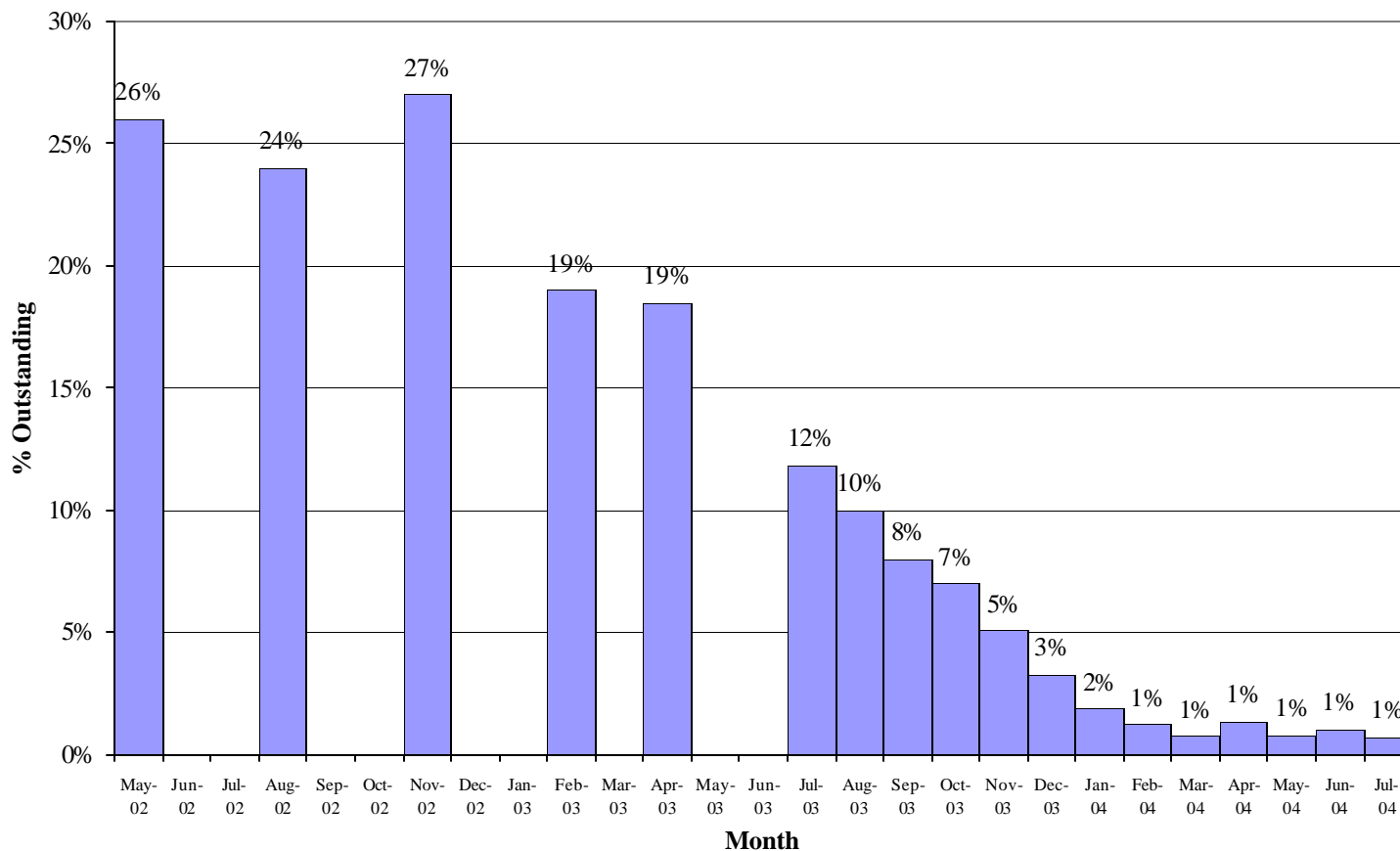
DOE's Plan Eliminates the Backlog in CY 2006





DOE Provides Data to NIOSH

Percentage NIOSH Requests more than 60 days old





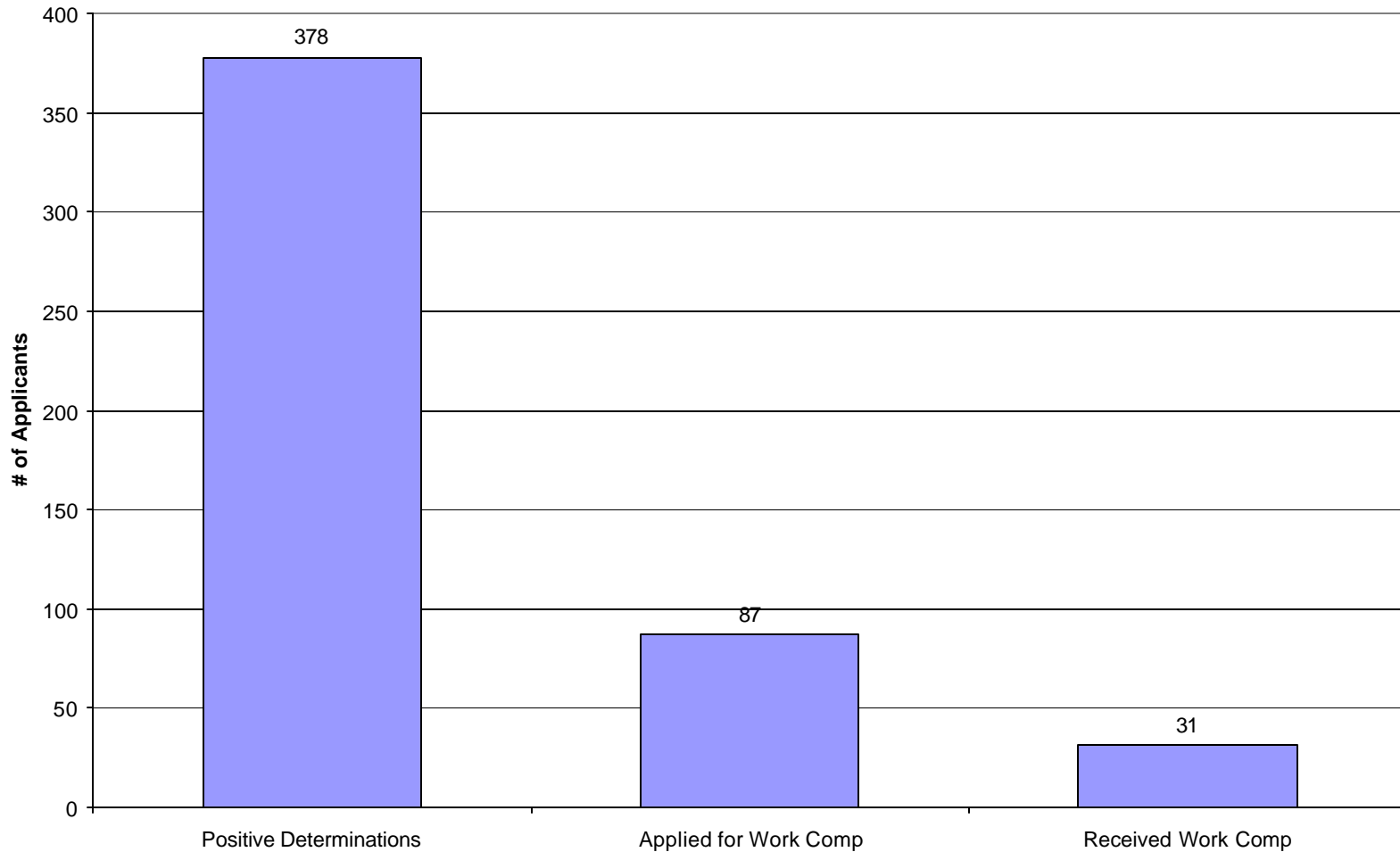
NIOSH Provides DOE with Physician Panel Nominees

- *NIOSH has provided DOE with 250 physician panel nominees*
- *190 physicians are currently serving on panels*



Applicants Applying For Work Comp

Workers' Compensation Payout as of 7/31/04

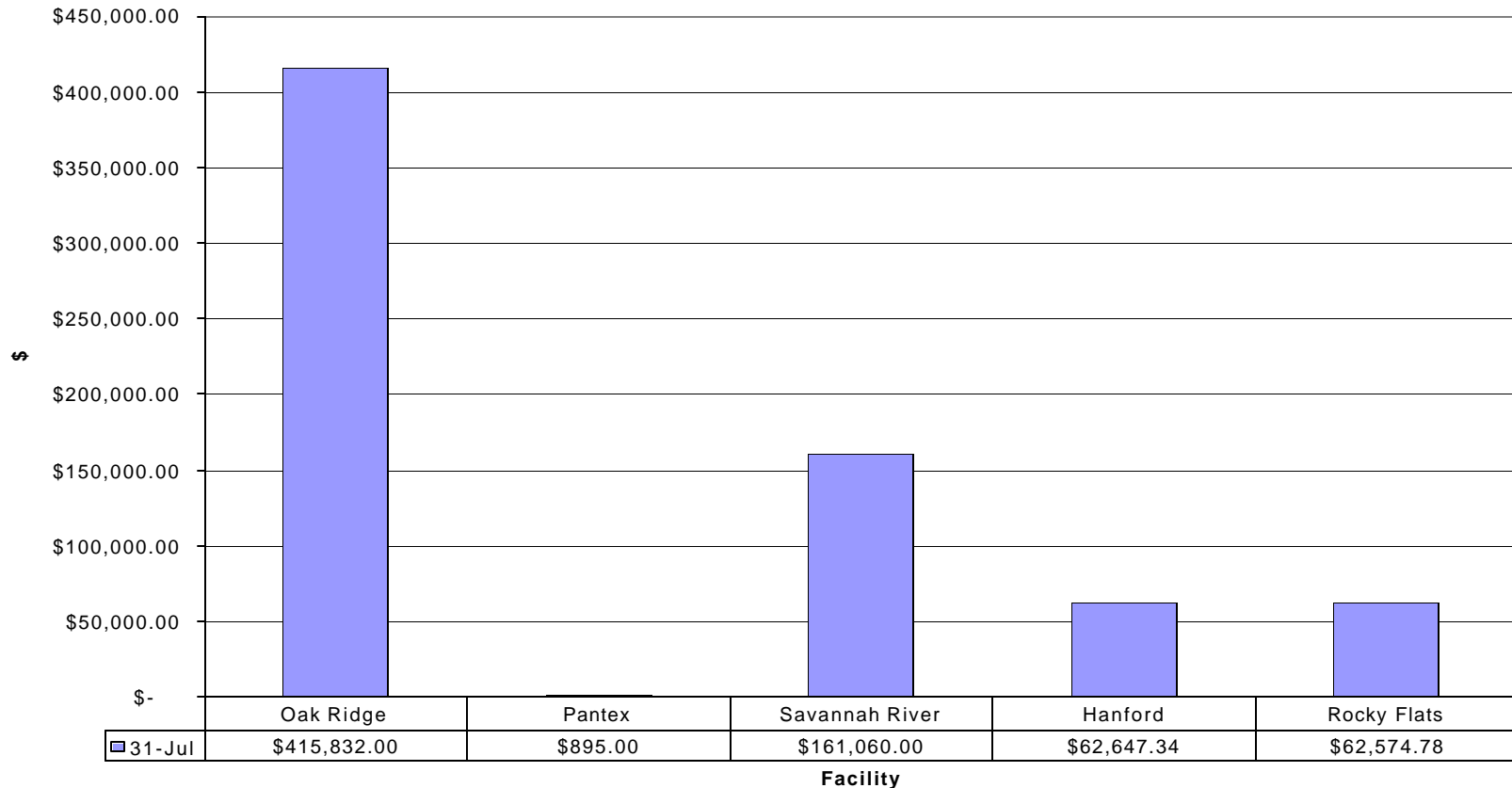


8/24/2004



Starting to Pay Work Comp Claims

Workers' Compensation Payout by Facility



The total payout for all individuals receiving awards complex-wide at DOE is \$703,009 through July 2004.



EEOICPA Part D Program Statistics for INEEL as of 8/13/04

Total Cases Received at OWA	948
Total Cases Completed	139
Positive Panel Findings (29)	
Negative Panel Findings (47)	
Ineligible Applications (48)	
Cases Withdrawn by Applicant (15)	
Cases Currently in Physician Panel Process	180
Cases Awaiting Panel Assignment (83)	
Cases at Physician Panel (97)	
Cases Developed; Awaiting Final Review by Applicant	48
Cases Being Developed	494
Cases Under Initial Review (13)	
Cases Under Research (478)	
Cases Under Construction (3)	
Cases Awaiting Development	87



QUESTIONS?