
CMS Manual System

Pub. 100-20 One-Time Notification

Department of Health &
Human Services (DHHS)
Centers for Medicare &
Medicaid Services (CMS)

Transmittal 32

Date: DECEMBER 19, 2003

CHANGE REQUEST 3007

I. SUMMARY OF CHANGES: This One-Time Notification outlines changes in the OPPS for calendar year 2004. These changes were discussed in the OPPS final rule for 2004, which was published in the **Federal Register** on November 7, 2003. Unless otherwise noted, all changes are effective for services furnished on or after January 1, 2004. The changes will be implemented through revisions to the Outpatient Code Editor and the OPPS Pricer, which will be in effect for services furnished on or after January 1, 2004. Enactment of the Medicare Prescription Drug, Improvement, and Modernization Act (DIMA) of 2003 does not affect the information in this One-Time Notification. Changes in the OPPS for calendar year 2004 resulting from the DIMA will be addressed separately.

NEW/REVISED MATERIAL - EFFECTIVE DATE: January 1, 2004

***IMPLEMENTATION DATE: January 5, 2004**

Disclaimer for manual changes only: The revision date and transmittal number apply only to red italicized material. Any other material was previously published and remains unchanged.

II. CHANGES IN MANUAL INSTRUCTIONS:

(R = REVISED, N = NEW, D = DELETED)

R/N/D	CHAPTER/SECTION/SUBSECTION/TITLE
N/A	

*III. FUNDING:

These instructions should be implemented within your current operating budget.

IV. ATTACHMENTS:

	Business Requirements
	Manual Instruction
	Confidential Requirements
X	One-Time Notification
	Recurring Change Notification

*Medicare contractors only

Attachment - One-Time Notification

Pub. 100-20	Transmittal: 32	Date: December 19, 2003	Change Request 3007
-------------	-----------------	-------------------------	---------------------

SUBJECT: January 2004 Update of the Hospital Outpatient Prospective Payment System (OPPS)

I. GENERAL INFORMATION

A. Background: This One-Time Notification outlines changes in the OPPS for calendar year 2004. These changes were discussed in the OPPS final rule for 2004, which was published in the **Federal Register** on November 7, 2003. Unless otherwise noted, all changes are effective for services furnished on or after January 1, 2004. The changes will be implemented through revisions to the OPPS Outpatient Code Editor and the OPPS Pricer, which will be in effect for services furnished on or after January 1, 2004.

B. Policy:

1. Limitations on Beneficiary Copayment For calendar year 2004, the national unadjusted copayment amount for an ambulatory payment classification (APC) group will be limited to 50 percent of the APC payment rate. In addition, the wage adjusted copayment amount for a procedure or service cannot exceed the inpatient hospital deductible amount for 2004 of \$876.
2. Outlier Payments for Hospitals For calendar year 2004, the outlier threshold is reduced from 2.75 to 2.6 times the OPPS payment for the service, and the outlier payment percentage is increased from 45 percent to 50 percent. In 2004, an outlier payment will be made to a hospital if the cost of providing a service exceeds 2.6 times the OPPS payment for the service and the amount of the outlier payment will be 50 percent of the amount by which the provider's costs exceed 2.6 times the OPPS payments.
3. Outlier Payments for Community Mental Health Centers (CMHCs) For calendar year 2004, the outlier threshold for CMHCs (bill type 76X) is increased from 2.75 to 3.65 times the OPPS payment, and the outlier payment percentage is increased from 45 percent to 50 percent. In 2004, an outlier payment will be made to a CMHC if the cost of providing a day of partial hospitalization exceeds 3.65 times the OPPS payment for the services and the amount of the outlier payment will be 50 percent of the amount by which the provider's costs exceed 3.65 times the OPPS payment.
4. Billing for Stereotactic Radiosurgery Stereotactic radiosurgery (SRS) is a form of radiation therapy for treating abnormalities, functional disorders, and tumors of the brain, neck, and most recently has expanded to treating tumors of the spine, lung, pancreas, prostate, bone, and liver. There are two basic methods in which SRS can be delivered to patients, linear accelerator-based treatment and multi-source photon-based treatment (often referred to as

Cobalt 60). Advances in technology have further distinguished linear accelerator-based SRS therapy into two types: gantry-based systems and image-guided robotic SRS systems. These two types of linear accelerator-based SRS therapies may be delivered in a complete session or in a fractionated course of therapy up to a maximum of five sessions.

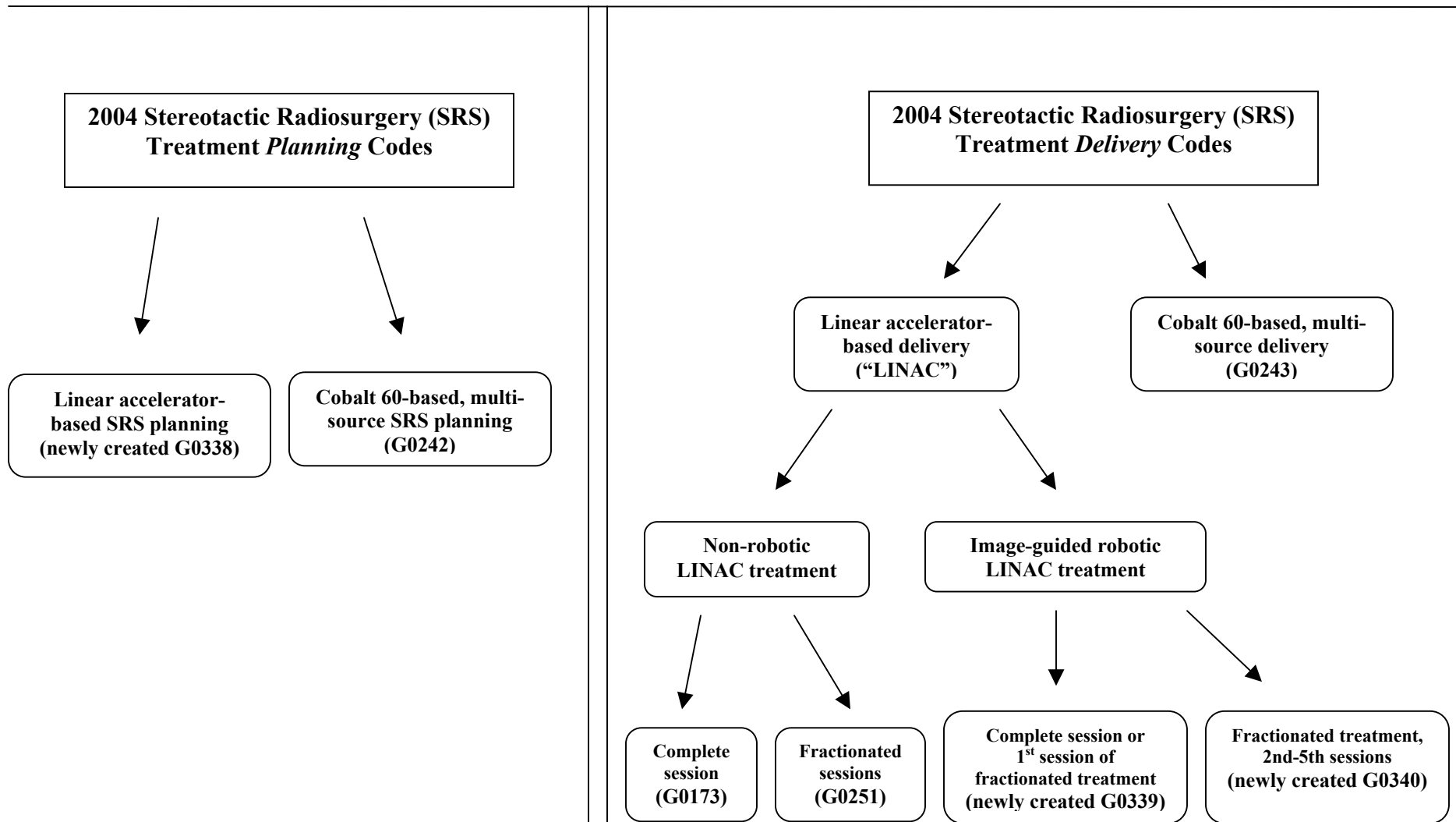
Effective January 1, 2004, when stereotactic radiosurgery is furnished to beneficiaries in a hospital outpatient department that is paid under the hospital outpatient prospective payment system (OPPS), hospitals are to bill using the following HCPCS codes:

- a. When billing for the planning and delivery of Cobalt 60-based, multi-source stereotactic radiosurgery, hospitals are to use the following HCPCS codes:
 - Planning – HCPCS code G0242
 - Delivery – HCPCS code G0243
- b. When billing for the planning and delivery of non-robotic linear accelerator-based stereotactic radiosurgery (complete session), hospitals are to use the following HCPCS codes:
 - Planning – HCPCS code G0338 *Linear-accelerator-based stereotactic radiosurgery plan, including dose volume histograms for target and critical structure tolerances, plan optimization performed for highly conformal distributions, plan positional accuracy and dose verification, all lesions treated, per course of treatment.*
 - Delivery – HCPCS code G0173
- c. When billing for the planning and delivery of non-robotic linear accelerator-based stereotactic radiosurgery (fractionated sessions), hospitals are to use the following HCPCS codes:
 - Planning – HCPCS code G0338
 - Delivery – HCPCS code G0251
- d. When billing for the planning and delivery of image-guided robotic linear accelerator-based stereotactic radiosurgery (complete session), hospitals are to use the following HCPCS codes:
 - Planning – HCPCS code G0338
 - Delivery – HCPCS code G0339 *Image-guided robotic linear accelerator-based stereotactic radiosurgery, complete course of therapy in one session, or first session of fractionated treatment. Code G0339 is reported for a complete course of therapy in one session, as well as the first session of a multi-session treatment.*
- e. When billing for the planning and delivery of image-guided robotic linear accelerator-based stereotactic radiosurgery (fractionated sessions), hospitals are to use the following HCPCS codes:
 - Planning – HCPCS code G0338

- Delivery – HCPCS code G0340 *Image-guided robotic linear accelerator-based stereotactic radiosurgery, delivery including collimator changes and custom plugging, fractionated treatment, all lesions, per session, second through fifth sessions, maximum 5 sessions per course of treatment.* Code G0340 is reported for additional sessions (second through fifth sessions) subsequent to the first session of a fractionated course of therapy. When providers perform multi-session image-guided robotic SRS therapy, they should bill using HCPCS code G0339 for the first session. For each additional session subsequent to the first session, providers are to bill using only HCPCS code G0340 up to a maximum of four additional sessions (total maximum of five sessions).

f. Payment for SRS planning does not include payment for CPT codes 77332 - 77334 when furnished on the same day. When provided, these services should be billed in addition to SR planning code G0242.

Flowchart for Understanding Stereotactic Radiosurgery



5. Billing for Intensity Modulated Radiation Therapy Intensity modulated radiation therapy (IMRT), also known as conformal radiation, delivers radiation with adjusted intensity to preserve adjoining normal tissue. IMRT has the ability to deliver a higher dose of radiation within the tumor and a lower dose of radiation to surrounding healthy tissue. Two types of IMRT are multi-leaf collimator-based IMRT and compensator-based IMRT. IMRT is provided in two treatment phases, planning and delivery. Effective January 1, 2004, when IMRT is furnished to beneficiaries in a hospital outpatient department that is paid under the hospital outpatient prospective payment system (OPPS), hospitals are to bill according to the following guidelines:
- a. When billing for the planning of IMRT treatment services CPT codes 77280- 77295, 77300, 77305 -77321, 77336, and 77370 are not to be billed in addition to 77301; however charges for those services should be included in the charge associated with CPT code 77301.
 - b. Hospitals are not prohibited from using existing IMRT CPT codes 77301 and 77418 to bill for compensator-based IMRT technology in the hospital outpatient setting.
 - c. Payment for IMRT planning does not include payment for CPT codes 77332 - 77334 when furnished on the same day. When provided, these services are to be billed in addition to the IMRT planning code 77301.
 - d. Providers billing for both CPT codes 77301 (IMRT treatment planning) and 77334 (design and construction of complex treatment devices) on the same day should append a modifier –59.

Flowchart for Understanding Intensity-Modulated Radiation Therapy ¹

¹Note that the coding guidance reflected in this flowchart are for Medicare reporting purposes only. Medicare coding guidelines may differ from third party payer policies; therefore, hospitals may wish to contact their local third party payers for specific reporting guidelines related to billing for IMRT services.

2004 Intensity-Modulated Radiation Therapy (IMRT) Treatment *Planning* Code

Use CPT code 77301 for all (e.g., multi-leaf collimator-based, compensator-based) types of IMRT *planning*

2004 Intensity-Modulated Radiation Therapy (IMRT) Treatment *Delivery* Code

Use CPT code 77418 for all (e.g., multi-leaf collimator-based, compensator-based) types of IMRT *delivery*

When a treatment **device** is furnished along with IMRT *planning* on the SAME DAY, then...

Bill the treatment device code (from the list below) in **ADDITION** to

the IMRT planning code

CPT code 77332²
CPT code 77333²
CPT code 77334²

+

CPT code 77301

² Append **modifier -59** to indicate that the procedure represents a distinct service from others reported on the same date of service. A distinct service may be defined as a different session, different surgery, different site, different lesion, different injury or area of injury (in extensive injuries).

When billing for IMRT-related services identified by the following codes:

CPT code 77280	CPT code 77295	CPT code 77310	CPT code 77336
CPT code 77285	CPT code 77300	CPT code 77315	CPT code 77370
CPT code 77290	CPT code 77305	CPT code 77321	

Do **NOT** bill CPT code 77301 in addition to one of the above planning codes

Instead, include charges for the above list of IMRT planning codes within the charge associated with CPT code 77301.

6. Payment for Single Indication Orphan Drugs We are discontinuing payment on a reasonable cost basis for single indication orphan drugs furnished in the outpatient department of a hospital that is subject to the OPSS. For calendar year 2004, the following single indication orphan drugs are assigned to APCs and paid under the OPSS:

J0205 *Injection, alglucerase, per 10 units*
J0256 *Injection, alpha 1-proteinase inhibitor, 10mg*
J1785 *Injection, imiglucerase, per unit*
J2355 *Injection, oprelvekin, 5 mg*
J3240 *Injection, thyrotropin alpha, 0.9 mg*
J7513 *Daclizumab parenteral, 25 mg*
J9015 *Aldesleukin, per vial*
J9160 *Denileukin difitox, 300 mg*
J9216 *Interferon, gamma 1-b, 3 million units*
J9300 *Gemtuzumab ozogamicin, 5 mg*
Q2019 *Injection, basiliximab, 20 mg*

7. Payment for Prostate Brachytherapy In 2003, CMS paid a packaged amount for prostate brachytherapy. Hospitals were required to bill using HCPCS code G0256 (prostate brachytherapy with palladium sources), when palladium sources were implanted and HCPCS code G0261 (prostate brachytherapy with iodine sources). These HCPCS codes were to be used in lieu of separate billing for CPT codes 77778 (*interstitial radiation source application; complex*) and 55859 (*transperitoneal placement of needles or catheters into prostate for interstitial radiation element application, with or without cystoscopy*) and HCPCS codes C1718 (iodine sources) and C1720 (palladium sources).

Under the OPSS for 2004, HCPCS codes G0256 and G0261 are deleted. For services furnished on or after January 1, 2004, hospitals are to use the CPT codes 77778 and 55859 to bill for the procedures and HCPCS codes C1718 and C1720 to bill for the brachytherapy sources. Separate payments will be made for the procedures and for the sources. Hospitals are to bill the brachytherapy sources showing the number of sources used in the units column. For example, if 100 brachytherapy sources are implanted in the prostate, the hospital will bill 100 units of the applicable code for the brachytherapy source.

8. Billing Injection/Infusion Codes Effective January 1, 2004, code Q0085 - *Chemotherapy administration by infusion technique and other technique, per visit* is no longer payable under the OPSS. Instruct hospitals to report both Q0083 *Chemotherapy administration by other than infusion technique only, per visit* and Q0084 *Chemotherapy administration by infusion technique only,*

per visit when chemotherapy is administered by both infusion and another route of administration. Claims on which Q0085 is billed will be returned to the provider for correction.

Drug administration codes Q0081, Q0083 and Q0084 are defined on a per visit basis. Two units of the same code are billed on the same date only if two distinct and separate visits to the hospital occur on the same date.

For example, suppose that on March 12, two chemotherapy drugs are administered by intravenous injection and 3 chemotherapy drugs by infusion to a beneficiary during the same visit, between 7:30 am and 10:30 am. The hospital bills 1 unit of Q0083 and 1 unit of Q0084, along with the HCPCS codes for the drugs, and date of service March 12. The patient leaves the OPD at 11:00 am, following completion of the first chemotherapy visit, and returns later the same day suffering from dehydration and requiring infusion of fluids and infusion of anti-emetics. The hospital bills one unit of Q0081 for those services, with date of service March 12. Or, the patient leaves the OPD at 11:00 am, following completion of chemotherapy, and returns at 4:30 pm for a second infusion of one or more chemotherapy drugs that could not be administered for medical reasons during the earlier visit between 7:30 am and 10:30 am. The hospital bills 1 unit of Q0084 on a separate line with date of service March 12.

Hospitals should not report cancer chemotherapy furnished to hospital outpatients using the CPT chemotherapy administration codes. Payment under OPPS for cancer chemotherapy is made only when cancer chemotherapy is billed using Q0083 and Q0084.

CPT codes 90782-90788 each report an injection and as such, one unit of the code is billed each time there is a separate injection that meets the definition of the code. Note that code 90782-90788 are used to report intradermal, subcutaneous, intramuscular, or routine intravenous drug injections. Hospitals may report and receive payment under the OPPS for both an injection and an infusion code when modifier -59 is also reported with the injection code to indicate that it is a separate and distinct service.

9. Billing for Oxaliplatin (Eloxatin) Hospitals are to report HCPCS code C9205, *Injection, oxaliplatin, per 5 mg*, instead of J9263, *Injection, oxaliplatin, 0.5 mg*, to allow transitional pass-through payment under the OPPS for oxaliplatin.
10. Billing for Bexxar and Zevalin Zevalin (ibritumomab tiuxetan) and Bexxar (tositumomab and Iodine I 131 tositumomab) are two types of radioimmunotherapies that are used to treat patients with certain forms of non-Hodgkin's lymphoma (NHL). Both Zevalin and Bexxar are therapeutic regimens administered in two separate steps: the first step is diagnostic to determine radiopharmaceutical biodistribution of radiolabeled antibodies; the second step is the therapeutic administration of targeted radiolabeled antibodies.

For services furnished on or after January 1, 2004, hospitals are to report the HCPCS codes listed below when billing for Zevalin or Bexxar for payment under the OPPS.

a. Zevalin:

- HCPCS code C1082, *Supply of radiopharmaceutical diagnostic imaging agent, indium-111 ibritumomab tiuxetan, per dose.*
- HCPCS code C1083, *Supply of radiopharmaceutical therapeutic imaging agent, Yttrium 90 ibritumomab tiuxetan, per dose.*

b. Bexxar:

- HCPCS code C1080, *Supply of radiopharmaceutical diagnostic imaging agent, I-131 tositumomab, per dose.*
- HCPCS code C1081, *Supply of radiopharmaceutical therapeutic imaging agent, I-131 tositumomab, per dose.*
- HCPCS code G3001, *Administration and supply of tositumomab, 450mg*
 - Use G3001 to bill for the infusion and supply of unlabeled tositumomab used during the dosimetric/diagnostic step and to bill for the infusion and supply of unlabeled tositumomab used during the therapeutic step. The OPPS payment for G3001 includes payment for both the supply of unlabeled tositumomab and administration of the unlabeled tositumomab.
- CPT code 77300, *Basic radiation dosimetry calculation*

c. For radionuclide scanning to determine the biodistribution of indium-111 ibritumomab tiuxetan (diagnostic Zevalin) or diagnostic I-131 tositumomab (Bexxar), use--

- CPT code 78804, *Radiopharmaceutical localization of tumor or distribution of radiopharmaceutical agent(s); whole body, requiring two or more days imaging*
 - The OPPS payment for CPT code 78804 includes payment for the administration of the diagnostic radiopharmaceutical as well as scans for determining biodistribution of the radiopharmaceutical.

d. For administration of Yttrium 90 ibritumomab tiuxetan (therapeutic Zevalin) or the therapeutic dose of I-131 tositumomab (Bexxar), use--

- CPT code 79403, *Radiopharmaceutical therapy, radiolabeled monoclonal antibody by intravenous infusion*

e. Hospitals are not to use the CPT codes 77750, 78800-78803, 78999, 79100, 79400, or 77990 when billing for payment for Zevalin or Bexxar under the OPPS.

11. Reporting Implantable Devices Effective January 1, 2004, in an effort to improve data that will be used to update APC payments, CMS has reinstated the C codes for implantable devices for which payment is packaged into the APC payment for the procedure in which the device is used. (See the list of CPT/HCPCS Codes Added Effective January 1, 2004 in the attached Summary of OCE Data Changes which includes the C codes that are reinstated) These codes are the codes for categories of devices for which device pass-through payments have expired. Under the OPSS for 2003, the codes were deleted because, when the devices ceased to be separately payable under the pass-through provisions, the payment for the devices was included in the payment for the procedure, thus, a device code was no longer needed for payment purposes.

In developing the 2004 OPSS we found that separate coding of devices results in improved accuracy in establishing the median costs used to set relative weights for the APCs for the procedures into which the costs of these devices are packaged. We believe that claims that contain a separate line with a C code or other HCPCS code for the implantable device, along with a separate charge for the device, most completely and accurately account for the total cost of the procedure including the implanted device and result in the most accurate median costs for those procedures that use implanted devices.

Hospitals are strongly encouraged to separately bill devices using a device category C code or other appropriate HCPCS code for implantable devices along with the charge for the device. Complete and accurate reporting of the codes and the charges for the devices is critical to ensuring that the relative weights for the services are accurate and thus for ensuring proper payment to hospitals for the procedures that use implanted devices.

All device category C codes for both current pass-through devices as well as packaged devices can be found on Addendum B on the CMS OPSS Web site: <http://www.cms.hhs.gov/regulations/hopps/2004f/>. Devices, whether packaged or paid as pass-through devices, are reported using revenue codes: 272, 275, 276, 278, 279, 280, 289 or 624.

12. Billing for C9704 *C9704 Injection or insertion of inert substance for submucosal/intramuscular injection(s) into the upper gastrointestinal tract, under fluoroscopic guidance* is a new technology procedure under the hospital OPSS. This procedure involves the use of a solution made up of a polymer and a solvent that is implanted by injection into the wall of the lower esophagus. This implantable device is used to help patients with symptoms of gastroesophageal reflux disease (GERD). This procedure involves a single endoscopy (43234 or 43235), fluoroscopy, and the use of the device. Under the hospital OPSS, the initial endoscopy is separately reportable, however, payment for C9704 includes the device and fluoroscopy. Therefore, hospitals are not to report C9704 with CPT code 76000 (fluoroscopy).

13. New Device Category Code Definition Effective of January 1, 2004, C1819 *Surgical tissue localization and excision device (implantable)* will be reportable as a new pass-through device category code under the OPPS. The category is defined as follows:

- **Lesion Localization Device (C1819)** - An implantable radiofrequency guide device that captures and allows for appropriate stabilization, dissection, and excision of a lesion (may include radiofrequency, laser, or ultrasonic components). This device is used with ultrasound, stereotactic, and alphanumeric grid imaging techniques.

14. Updating Intermediary HCPCS File Intermediaries should take action to ensure the following codes are included in their HCPCS processing system:

Code	Short Descriptor	Long Descriptor	Effective Date
C1080	I-131 tositumomab, dx	Supply of radiopharmaceutical diagnostic imaging agent, I-131 tositumomab, per dose	1/1/04
C1081	I-131 tositumomab, tx	Supply of radiopharmaceutical therapeutic imaging agent, I-131 tositumomab, per dose	1/1/04
C1082	In-111 ibritumomab tiuxetan	Supply of radiopharmaceutical diagnostic imaging agent, indium-111 ibritumomab tiuxetan, per dose	1/1/04
C1083	Yttrium 90 ibritumomab tiuxe	Supply of radiopharmaceutical therapeutic imaging agent, Yttrium 90 ibritumomab tiuxetan, per dose	1/1/04
C1819	Tissue localization-excision dev	Surgical tissue localization and excision device (implantable)	1/1/04
C2633	Brachytx source, Cesium-131	Brachytherapy source, Cesium-131	1/1/04
C9205**	Oxaliplatin	Injection, oxaliplatin, per 5 mg	7/1/03
C9207*	Injection, bortezomib	Injection, bortezomib, per 3.5 mg	10/1/03
C9210	Injection, palonosetron HCl	Injection, palonosetron hydrochloride, per 250 mcg	1/1/04
C9211	Inj, alefacept, IV	Injection, alefacept, for intravenous use, per 7.5 mg	1/1/04

C9212	Inj, alefacept, IM	Injection, alefacept, for intramuscular use, per 7.5 mg	1/1/04
C9704	Inj inert subs upper GI	Injection or insertion of inert substance for submucosal/intramuscular injection(s) into the upper gastrointestinal tract, under fluoroscopic guidance.	1/1/04

* This code has an effective date of 10/1/03 with an implementation date of 1/1/04 under the hospital OPSS.

** This code was slated for deletion effective 12/31/03. However, this code will not be deleted. This code will continue to be active and reportable under the hospital OPSS. The effective date of this code is 7/1/03.

15. Summary of January 2004 Modifications Attachment A is the **OPSS OCE Final Summary of Data Changes Effective January 1, 2004**. This document summarizes all of the modifications made to update the OPSS for 2004 for changes to APCs, HCPCS/CPT procedure codes, APC assignments, status indicators, modifiers, revenue codes, and edits.

16. Changes to the OPSS PRICER Logic

The following list contains a description of all OPSS PRICER logic changes that are effective beginning January 1, 2004.

- a. New OPSS wage indexes will be effective January 1, 2004. These are the same wage indexes that were implemented on October 1, 2003 for inpatient hospitals. Some corrections have been made since the publication of the inpatient rule and we are using the corrected wage indexes where applicable.
- b. Inpatient hospitals considered reclassified on October 1, 2003, will be considered reclassified for OPSS on January 1, 2004.
- c. Section 401 designations and floor MSA designations will be considered effective for OPSS on January 1, 2004.
- d. New payment rates and coinsurance amounts will be effective for OPSS on January 1, 2004. Some APCs have coinsurance amounts limited to 50 percent of the payment rate effective January 1, 2004. Some APCs have a coinsurance limit equal to the inpatient deductible of \$876 effective January 1, 2004.
- e. For outliers for hospitals, we will change the factor multiplied times the total line item payments from 2.75 to 2.6 and the factor used to multiply the difference between line item payments and costs from 0.45 to 0.50.
- f. For outliers for CMHCs (bill type 76X), we will change the factor multiplied times the total line item payments from 2.75 to 3.65 and the factor used to multiply the difference between line item payments and costs from 0.45 to 0.50.
- g. There are no device offsets for 2004.

C. Provider Education: Intermediaries shall inform affected providers by posting either a summary or relevant portions of this document on their Web site within two weeks. Also, intermediaries shall publish this same information in their next regularly scheduled bulletin. If they have a listserv that targets affected providers, they shall use it to notify subscribers that information about the January 2004 update of the hospital outpatient prospective payment system is available on their Web site.

II. BUSINESS REQUIREMENTS

"Shall" denotes a mandatory requirement

"Should" denotes an optional requirement

Requirement #	Requirements	Responsibility
3007.1	Fiscal intermediaries shall update their HCPCS file to reflect additional codes listed in section I. B. 14.	Fiscal Intermediaries
3007.2	Fiscal intermediaries shall inform providers of the OPPS changes for 2004 detailed in this OTN.	Fiscal Intermediaries
3007.3	Standard systems maintainers shall install the OPPS PRICER for January 2004.	SSMs

III. SUPPORTING INFORMATION & POSSIBLE DESIGN CONSIDERATIONS

A. Other Instructions:

X-Ref Requirement #	Instructions
	N/A

B. Design Considerations:

X-Ref Requirement #	Recommendation for Medicare System Requirements
	N/A

C. Interfaces: N/A

D. Contractor Financial Reporting /Workload Impact: N/A

E. Dependencies: N/A

F. Testing Considerations: N/A

IV. SCHEDULE, CONTACTS, AND FUNDING

Effective Date: January 1, 2004 Implementation Date: January 5, 2004 Pre-Implementation Contact(s): Janet Wellham 410-786-4510 Post-Implementation Contact(s): Janet Wellham 410-786-4510	These instructions shall be implemented within your current operating budget
--	---

Attachment

Attachment A

Final
Summary of Data Changes
OCE/APC v5.0
Effective Jan. 1, 2004

Table of Contents

CPT codes, descriptions, and material only are Copyright 2003 American Medical Association. All Rights Reserved. No fee schedules, basic units, relative values, or related listings are included in CPT. The AMA assumes no liability for the data contained herein. Applicable FARS/DFARS restrictions apply to government use.

DIAGNOSIS CHANGES	3
DIAGNOSIS - EDIT CHANGES	3
APC CHANGES	4
ADDED APCs	4
APC – DESCRIPTION CHANGES	9
APC - SI CHANGES	11
HCPCS/CPT PROCEDURE CODE CHANGES	11
ADDED HCPCS/CPT PROCEDURE CODES	11
DELETED HCPCS/CPT PROCEDURE CODES	26
HCPCS - APC AND STATUS INDICATOR CHANGES *	27
HCPCS - EDIT ASSIGNMENTS	51
HCPCS - DESCRIPTION CHANGES	82
HCPCS - UNITS OF SERVICE	Error! Bookmark not defined.
MODIFIERS	86
ADDED MODIFIERS	86
REVENUE CODES	87
ADDED REVENUE CODES	87
REVENUE CODE SI CHANGES	87

DIAGNOSIS CHANGES

DIAGNOSIS - EDIT CHANGES

The following code was added to the list of adult only diagnoses, age 15 - 124 years old, **effective 10-01-03**

Diagnosis	Description
79981	Decreased libido

The following codes were removed from the lists of adult only diagnoses, age 15 - 124 years old, **effective 10-01-03**

Dx Code	Description
57400	Calculus of gallbladder with acute cholecystitis without mention of obstruction
57401	Calculus of gallbladder with acute cholecystitis with obstruction
57410	Calculus of gallbladder with other cholecystitis without mention of obstruction
57411	Calculus of gallbladder with other cholecystitis with obstruction
57420	Calculus of gallbladder without mention of cholecystitis without mention of obstruction
57421	Calculus of gallbladder without mention of cholecystitis with obstruction
57430	Calculus of bile duct with acute cholecystitis without mention of obstruction
57431	Calculus of bile duct with acute cholecystitis with obstruction
57440	Calculus of bile duct with other cholecystitis without mention of obstruction
57441	Calculus of bile duct with other cholecystitis with obstruction
57450	Calculus of bile duct without mention of cholecystitis without mention of obstruction
57451	Calculus of bile duct without mention of cholecystitis with obstruction
57460	Calculus of gallbladder and bile duct with acute cholecystitis without mention of obstruction
57461	Calculus of gallbladder and bile duct with acute cholecystitis with obstruction
57470	Calculus of gallbladder and bile duct with other cholecystitis without mention of obstruction
57471	Calculus of gallbladder and bile duct with other cholecystitis with obstruction
57480	Calculus of gallbladder and bile duct with acute and chronic cholecystitis

Dx Code	Description
	without mention of obstruction
57481	Calculus of gallbladder and bile duct with acute and chronic cholecystitis with obstruction
57490	Calculus of gallbladder and bile duct without cholecystitis without mention of obstruction
57491	Calculus of gallbladder and bile duct without cholecystitis with obstruction
5750	Acute cholecystitis
57510	Cholecystitis, not otherwise specified
57511	Chronic cholecystitis
57512	Acute and chronic cholecystitis
5752	Obstruction of gallbladder
5753	Hydrops of gallbladder
5760	Post cholecystectomy syndrome
5771	Chronic pancreatitis

APC CHANGES

ADDED APCs

The following APC was added to OCE/APC, **effective 10/1/03**

APC	APCDesc	Status Indicator
9207	Injection, bortezomib	G

The following APCs were added to OCE/APC, **effective 1/1/04**

APC	APCDesc	StatusIndicator
36	Level II Fine Needle Biopsy/Aspiration	T
37	Level III Needle Biopsy/Aspiration Except Bone Marrow	T
39	Implantation of Neurostimulator	S
40	Level II Implantation of Neurostimulator Electrodes	S
375	Ancillary Outpatient Services When Patient Expires	T
376	Level II Cardiac Imaging	S
377	Level III Cardiac Imaging	S
378	Level II Pulmonary Imaging	S
379	Injection adenosine 6 MG	K
380	Dipyridamole injection	K
384	GI Procedures with Stents	T
385	Level I Prosthetic Urological Procedures	S
386	Level II Prosthetic Urological Procedures	S
387	Level II Hysteroscopy	T
388	Discography	S
389	Non-imaging Nuclear Medicine	S
390	Level I Endocrine Imaging	S

APC	APCDesc	StatusIndicator
391	Level II Endocrine Imaging	S
393	Red Cell/Plasma Studies	S
394	Hepatobiliary Imaging	S
395	GI Tract Imaging	S
396	Bone Imaging	S
397	Vascular Imaging	S
398	Level I Cardiac Imaging	S
399	Nuclear Medicine Add-on Imaging	S
400	Hematopoietic Imaging	S
401	Level I Pulmonary Imaging	S
402	Brain Imaging	S
403	CSF Imaging	S
404	Renal and Genitourinary Studies Level I	S
405	Renal and Genitourinary Studies Level II	S
406	Tumor/Infection Imaging	S
407	Radionuclide Therapy	S
409	Red Blood Cell Tests	X
410	Mammogram Add On	S
411	Respiratory Procedures	S
412	IMRT Treatment Delivery	S
415	Level II Endoscopy Lower Airway	T
700	Antepartum Manipulation	T
704	IN 111 Satumomab pendetide per dose	K
705	Technetium TC99M tetrofosmin	K
731	Sargramostim injection	K
763	Dolasetron mesylate oral	K
764	Granisetron HCl injection	K
765	Granisetron HCl 1 mg oral	K
809	Bcg live intravesical vac	K
814	Asparaginase injection	K
815	Cyclophosphamide 100 MG inj	K
816	Cyclophosphamide lyophilized	K
817	Cytarabine hcl 100 MG inj	K
819	Dacarbazine 100 mg inj	K
824	Etoposide 10 MG inj	K
834	Interferon alfa-2a inj	K
836	Interferon alfa-2b inj recombinant, 1 million	K
847	Doxorubic hcl 10 MG vl chemo	K
850	Streptozocin injection, 1 gm	K
851	Thiotepa injection	K
860	Plicamycin (mithramycin) inj	K
865	Interferon alfa-n3 inj, human leukocyte derived, 2	K
884	Rho d immune globulin inj, 1 dose pkg	K
900	Alglucerase injection, per 10 u	K
901	Alpha 1 proteinase inhibitor, 10 mg	K
907	Ganciclovir sodium injection	K
911	Streptokinase per 250,000 iu	K
913	Ganciclovir long act implant	K
916	Imiglucerase injection/unit	K
1064	I-131 sodium iodide capsule	K
1065	I-131 sodium iodide solution	K

APC	APCDesc	StatusIndicator
1079	CO 57/58 per 0.5 uCi	K
1080	I-131 tositumomab, dx	K
1081	I-131 tositumomab, tx	K
1089	Cyanocobalamin cobalt co57	K
1166	Cytarabine liposome	K
1200	TC 99M Sodium Glucoheptonat	K
1201	TC 99M SUCCIMER, PER Vial	K
1501	New Technology - Level I (\$0 - \$50)	S
1502	New Technology - Level II (\$50 - \$100)	S
1503	New Technology - Level III (\$100 - \$200)	S
1504	New Technology - Level IV (\$200 - \$300)	S
1505	New Technology - Level V (\$300 - \$400)	S
1506	New Technology - Level VI (\$400 - \$500)	S
1507	New Technology - Level VII (\$500 - \$600)	S
1508	New Technology - Level VIII (\$600 - \$700)	S
1509	New Technology - Level IX (\$700 - \$800)	S
1510	New Technology - Level X (\$800 - \$900)	S
1511	New Technology - Level XI (\$900 - \$1000)	S
1512	New Technology - Level XII (\$1000 - \$1100)	S
1513	New Technology - Level XIII (\$1100 - \$1200)	S
1514	New Technology-Level XIV (\$1200- \$1300)	S
1515	New Technology - Level XV (\$1300 - \$1400)	S
1516	New Technology - Level XVI (\$1400 - \$1500)	S
1517	New Technology - Level XVII (\$1500-\$1600)	S
1518	New Technology - Level XVIII (\$1600-\$1700)	S
1519	New Technology - Level IXX (\$1700-\$1800)	S
1520	New Technology - Level XX (\$1800-\$1900)	S
1521	New Technology - Level XXI (\$1900-\$2000)	S
1522	New Technology - Level XXII (\$2000-\$2500)	S
1523	New Technology - Level XXIII (\$2500-\$3000)	S
1524	New Technology - Level XIV (\$3000-\$3500)	S
1525	New Technology - Level XXV (\$3500-\$4000)	S
1526	New Technology - Level XXVI (\$4000-\$4500)	S
1527	New Technology - Level XXVII (\$4500-\$5000)	S
1528	New Technology - Level XXVIII (\$5000-\$5500)	S
1529	New Technology - Level XXIX (\$5500-\$6000)	S
1530	New Technology - Level XXX (\$6000-\$6500)	S
1531	New Technology - Level XXXI (\$6500-\$7000)	S
1532	New Technology - Level XXXII (\$7000-\$7500)	S
1533	New Technology - Level XXXIII (\$7500-\$8000)	S
1534	New Technology - Level XXXIV (\$8000-\$8500)	S
1535	New Technology - Level XXXV (\$8500-\$9000)	S
1536	New Technology - Level XXXVI (\$9000-\$9500)	S
1537	New Technology - Level XXXVII (\$9500-\$10000)	S
1538	New Technology - Level I (\$0 - \$50)	T
1539	New Technology - Level II (\$50 - \$100)	T
1540	New Technology - Level III (\$100 - \$200)	T
1541	New Technology - Level IV (\$200 - \$300)	T
1542	New Technology - Level V (\$300 - \$400)	T
1543	New Technology - Level VI (\$400 - \$500)	T
1544	New Technology - Level VII (\$500 - \$600)	T

APC	APCDesc	StatusIndicator
1545	New Technology - Level VIII (\$600 - \$700)	T
1546	New Technology - Level IX (\$700 - \$800)	T
1547	New Technology - Level X (\$800 - \$900)	T
1548	New Technology - Level XI (\$900 - \$1000)	T
1549	New Technology - Level XII (\$1000 - \$1100)	T
1550	New Technology - Level XIII (\$1100 - \$1200)	T
1551	New Technology-Level XIV (\$1200- \$1300)	T
1552	New Technology - Level XV (\$1300 - \$1400)	T
1553	New Technology - Level XVI (\$1400 - \$1500)	T
1554	New Technology - Level XVII (\$1500-\$1600)	T
1555	New Technology - Level XVIII (\$1600-\$1700)	T
1556	New Technology - Level XIX (\$1700-\$1800)	T
1557	New Technology - Level XX (\$1800-\$1900)	T
1558	New Technology - Level XXI (\$1900-\$2000)	T
1559	New Technology - Level XXII (\$2000-\$2500)	T
1560	New Technology - Level XXIII (\$2500-\$3000)	T
1561	New Technology - Level XXIV (\$3000-\$3500)	T
1562	New Technology - Level XXV (\$3500-\$4000)	T
1563	New Technology - Level XXVI (\$4000-\$4500)	T
1564	New Technology - Level XXVII (\$4500-\$5000)	T
1565	New Technology - Level XXVIII (\$5000-\$5500)	T
1566	New Technology - Level XXIX (\$5500-\$6000)	T
1567	New Technology - Level XXX (\$6000-\$6500)	T
1568	New Technology - Level XXXI (\$6500-\$7000)	T
1569	New Technology - Level XXXII (\$7000-\$7500)	T
1570	New Technology - Level XXXIII (\$7500-\$8000)	T
1571	New Technology - Level XXXIV (\$8000-\$8500)	T
1572	New Technology - Level XXXV (\$8500-\$9000)	T
1573	New Technology - Level XXXVI (\$9000-\$9500)	T
1574	New Technology - Level XXXVII (\$9500-\$10000)	T
1575	New Tech Placeholder APC	T
1576	New Tech Placeholder APC	T
1577	New Tech Placeholder APC	T
1578	New Tech Placeholder APC	T
1579	New Tech Placeholder APC	T
1580	New Tech Placeholder APC	T
1581	New Tech Placeholder APC	T
1582	New Tech Placeholder APC	T
1583	New Tech Placeholder APC	T
1584	New Tech Placeholder APC	T
1585	New Tech Placeholder APC	T
1586	Placeholder APC	T
1600	Technetium TC 99m sestamibi	K
1603	Thallous chloride TL 201/mci	K
1606	Anistreplase, 30 u	K
1608	Etanercept injection	K
1619	Gallium ga 67	K
1622	Technetium tc99m mertiatide	K
1624	Sodium phosphate p32	K
7007	Inj milrinone lactate, per 5 mg	K
7015	Busulfan, oral, 2 mg	K

APC	APCDesc	StatusIndicator
7019	Aprotinin, 10,000 kiu	K
7026	Ethanolamine oleate 100 mg	K
7027	Fomepizole, 15mg	K
7028	Fosphenytoin, 50 mg	K
7036	Urokinase 250,000 iu inj	K
7037	Urofollitropin, 75 iu	K
7040	Pentastarch 10% solution	K
7048	Alteplase recombinant	K
7316	Sodium hyaluronate injection	K
9001	Linezolid injection	K
9004	Gemtuzumab ozogamicin inj,5mg	K
9006	Tacrolimus injection	K
9008	Baclofen Refill Kit-500mcg	K
9013	Co 57 cobaltous chloride	K
9100	Iodinated I-131albumin, per 5 uci	K
9117	Yttrium 90 ibritumomab tiuxetan	K
9118	In-111 ibritumomab tiuxetan	K
9210	Injection, palonosetron HCL	G
9211	Inj, alefacept, IV	G
9212	Inj, alefacept, IM	G

DELETED APCs

The following APC's were deleted **effective 1/1/04**:

APC	APCDesc	StatusIndicator
118	Chemotherapy Administration by Both Infusion and Other Technique	S
179	Urinary Incontinence Procedures	T
182	Insertion of Penile Prosthesis	T
286	Myocardial Scans	S
290	Level I Diagnostic Nuclear Medicine Excluding	S
291	Level II Diagnostic Nuclear Medicine Excluding Myocardial Scans	S
292	Level III Diagnostic Nuclear Medicine Excluding Myocardial Scans	S
294	Level II Therapeutic Nuclear Medicine	S
649	Prostate Brachytherapy Palladium Seeds	T
666	Myocardial Add-ons	S
684	Prostate Brachytherapy Iodine Seeds	T
706	New Technology – Level I (\$0 - \$50)	S
707	New Technology – Level II (\$50 - \$100)	S
708	New Technology – Level III (\$100 - \$200)	S
709	New Technology – Level IV (\$200 - \$300)	S
710	New Technology – Level V (\$300 - \$500)	S
711	New Technology – Level VI (\$500 - \$750)	S
712	New Technology – Level VII (\$750 - \$1000)	S
713	New Technology – Level VIII (\$1000 - \$1250)	S
714	New Technology – Level IX (\$1250 - \$1500)	S
715	New Technology – Level X (\$1500 - \$1750)	S
716	New Technology – Level XI (\$1750 - \$2000)	S
717	New Technology – Level XII (\$2000 - \$2500)	S
718	New Technology – Level XIII (\$2500 - \$3000)	S

APC	APC Desc	Status Indicator
719	New Technology-Level XIV (\$3000- \$3500)	S
720	New Technology – Level XV (\$3500 - \$5000)	S
721	New Technology – Level XVI (\$5000 - \$6000)	S
725	New Technology – Level XX (\$19500-\$20500)	S
812	Carmustine, 100 mg	K
822	Diethylstilbestrol injection 250 mg	K
843	Pegaspargase, singl dose vial	K
930	Antithrombin iii injection per iu	K
970	New Technology – Level I (\$0 - \$50)	T
971	New Technology – Level II (\$50 - \$100)	T
972	New Technology – Level III (\$100 - \$200)	T
973	New Technology – Level IV (\$200 - \$300)	T
974	New Technology – Level V (\$300 - \$500)	T
975	New Technology – Level VI (\$500 - \$750)	T
976	New Technology – Level VII (\$750 - \$1000)	T
977	New Technology – Level VIII (\$1000 - \$1250)	T
978	New Technology – Level IX (\$1250 - \$1500)	T
979	New Technology – Level X (\$1500 - \$1750)	T
980	New Technology – Level XI (\$1750 - \$2000)	T
981	New Technology – Level XII (\$2000 - \$2500)	T
982	New Technology – Level XIII (\$2500 - \$3000)	T
983	New Technology-Level XIV (\$3000- \$3500)	T
984	New Technology – Level XV (\$3500 - \$5000)	T
985	New Technology – Level XVI (\$5000 - \$6000)	T
989	New Technology – Level XX (\$19500-\$20500)	T
1059	Cultured chondrocytes implnt	K
1348	I-131 solution, per uCi	K
1765	Adhesion barrier	H
2618	Probe, cryoablation	H
9000	Na chromate Cr51, per 0.25mCi	K
9129	Admin+supply tositumomab	S

[APC – DESCRIPTION CHANGES](#)

The following APCs had description changes, **effective 01/01/04**

APC	Old Description	New Description
1	Level 1 Photochemotherapy	Level I Photochemotherapy
2	Fine needle Biopsy/Aspiration	Level I Fine Needle Biopsy/Aspiration
5	Level II Needle Biopsy /Aspiration Except Bone Marrow	Level II Needle Biopsy/Aspiration Except Bone Marrow
15	Level III Debridement and Destruction	Level III Debridement & Destruction
16	Level IV Debridement and Destruction	Level IV Debridement & Destruction
21	Level III Excision/Biopsy	Level III Excision/ Biopsy
22	Level IV Excision/Biopsy	Level IV Excision/ Biopsy
76	Endoscopy Lower Airway	Level I Endoscopy Lower Airway
83	Coronary Angioplasty and Percutaneous	Coronary Angioplasty and Percutaneous Valvuloplasty
93	Vascular Reconstruction /Fistula Repair without	Vascular Reconstruction/Fistula Repair without Device

APC	Old Description	New Description
94	Resuscitation and Cardioversion	Level I Resuscitation and Cardioversion
97	Cardiac and ambulatory blood pressure monitoring	Cardiac and Ambulatory Blood Pressure Monitoring
119	Implantation of Devices	Implantation of Infusion Pump
167	Level II Urethral Procedures	Level III Urethral Procedures
168	Level III Urethral Procedures	Level II Urethral Procedures
190	Surgical Hysteroscopy	Level I Hysteroscopy
194	Level VI Female Reproductive Proc	Level VIII Female Reproductive Proc
195	Level VII Female Reproductive Proc	Level IX Female Reproductive Proc
200	Therapeutic Abortion	Level VII Female Reproductive Proc
201	Spontaneous Abortion	Level VI Female Reproductive Proc
202	Level VIII Female Reproductive Proc	Level X Female Reproductive Proc
212	Level II Nervous System Injections	Nervous System Injections
223	Implantation of Pain Management Device	Implantation or Revision of Pain Management Catheter
225	Implantation of Neurostimulator Electrodes	Level I Implementation of Neurostimulator Electrodes
269	Level III Echocardiogram Except	Level III Echocardiogram Except Transesophageal
284	Magnetic Resonance Imaging and Magnetic Resonance Angiography with Contrast Material	Magnetic Resonance Imaging and Magnetic Resonance Angiography with Contras
285	Heart muscle imaging (PET)	Myocardial Positron Emission Tomography (PET)
332	Computerized Axial Tomography and Computerized Angiography without Contrast Material	Computerized Axial Tomography and Computerized Angiography without Contras
336	Magnetic Resonance Imaging and Magnetic Resonance Angiography without Contrast	Magnetic Resonance Imaging and Magnetic Resonance Angiography without Cont
337	MRI and Magnetic Resonance Angiography without Contrast Material followed by Contrast Material	MRI and Magnetic Resonance Angiography without Contrast Material followed
341	Skin Tests and Miscellaneous Red Blood Cell Tests	Skin Tests
648	Breast Reconstruction with Prosthesis	Breast Reconstruction with Prosthesis
653	Vascular Reconstruction /Fistula Repair with Device	Vascular Reconstruction/Fistula Repair with Device
655	Insertion / Replacement/Conversion of a permanent dual chamber pacemaker	Insertion/Replacement/Conversion of a permanent dual chamber pacemaker
656	Transcatheter Placement of Intracoronary Drug Eluting Stents	Transcatheter Placement of Intracoronary Drug-Eluting Stents
665	Bone Density Appendicular Skeleton	Bone Density:AppendicularSkeleton
694	Moh's Surgery	Mohs Surgery
699	Level IV Eye Tests & Treatment	Level IV Eye Tests & Treatments
734	Injection, darbepoetin alfa (for non-ESRD use), pre 1 mcg	Injection, darbepoetin alfa (for non-ESRD), per 1 mcg
905	Immune globulin, 1 g	Immune globulin, 1g
917	Inj, Adenosine, 90 mg	Adenosine injection
1020	Pit,pher,L/R,CMV,irrad	Pit, pher,L/R,CMV,irrad
1021	RBC, frz/deg/wsh, L/R,irrad	RBC, frz/deg/wsh, L/R, irrad
1022	RBC,L/R,CMV neg, irrad	RBC, L/R, CMV neg, irrad
1045	Iobenguane sulfate I-131 per 0.5 mCi	Iobenguane sulfate I-131per 0.5 mCi
1607	Eptifibatide injection, 5 mg	Eptifibatide injection, 5mg
1719	Brachytx sour,Non-HDR Ir-192	Brachytx source,Non-HDR Ir-192
1720	Brachytx sour, Palladium 103	Brachytx source, Palladium 103
1775	FDG per dose (4-40 mCi/ml)	FDG, per dose (4-40 mCi/ml)
1783	Ocular imp, aqueous drain dev	Ocular implant, aqueous drain device

APC	Old Description	New Description
1814	Retinal tamp, silicone oil	Retinal Tamp, silicone oil
1819	Unassigned #355	Tissue localization-excision dev
1884	Embolization protect sys	Embolization Protect syst
1888	Endovas non-cardia abl cath	Catheter, ablation, non-cardiac, endovascular (implantable)
1900	Lead, coronary venous	Lead coronary venous
2616	Brachytx source Yttrium-90	Brachytx source, Yttrium-90
2633	Unassigned #38	Brachytx source, Cesium-131
9018	Botulinum tox B, per 100 u	Botulinum toxin B, per 100 u
9020	Sirolimus solution, 1 mg	Sirolimus tablet, 1 mg
9022	Im inj interferon beta 1-a	IM inj interferon beta 1-a
9024	Amphotericin b lipid complex	Amphotericin B, lipid formulation
9110	Alemtuzumab, per ml	Alemtuzumab, per 10 mg
9111	Inj, bivalirudin, per 250mg vial	Inj, bivalirudin, per 250 mg vial
9112	Perflutren lipid micro, per 2ml	Perflutren lipid micro, per 2ml
9113	Inj pantoprazole sodium, vial	Inj, pantoprazole sodium, vial
9120	Inj. Fulvestrant, per 50 mg	Inj, Fulvestrant, per 50 mg
9121	Inj. Argatroban, per 5 mg	Inj, Argatroban, per 5 mg
9122	Trelstar	Inj, Triptorelin pamoate, per 3.75 mg

APC - SI CHANGES

The following APCs had SI changes, **effective 01/01/04:**

APC	Old SI	New SI
2633	H	K
7051	G	K
9012	G	K
9015	G	K
9018	G	K
9019	G	K
9110	G	K
9202	G	K

HCPCS/CPT PROCEDURE CODE CHANGES

ADDED HCPCS/CPT PROCEDURE CODES

The following new HCPCS code was added to the OCE/APC, **effective 10/01/01**

HCPCS	CodeDesc	Status Indicator	APC
A4570	Splint	E	0

The following new HCPCS code was added to the OCE/APC, **effective 04/01/02**

HCPCS	CodeDesc	Status Indicator	APC
-------	----------	------------------	-----

HCPCS	CodeDesc	Status Indicator	APC
S9150	Evaluation by ocularist	E	0

The following new HCPCS codes were added to the OCE/APC, **effective 07/01/02**

HCPCS	CodeDesc	Status Indicator	APC
S9484	Crisis intervention per hour	E	0
S9490	HIT corticosteroid/diem	E	0
S9900	Christian Sci Pract visit	E	0

The following new HCPCS codes were added to the OCE/APC, **effective 10/01/02**

HCPCS	CodeDesc	Status Indicator	APC
S0104	Zidovudine, oral, 100 mg	E	0
S0201	Partial hospitalization serv	E	0
S0207	Paramedicintercep nonhospals	E	0
S0315	Disease management program	E	0
S0316	Follow-up/reassessment	E	0
S0320	RN telephone calls to DMP	E	0
S1040	Cranial remolding orthosis	E	0
S2262	Abortion maternal indic>=25w	E	0
S2265	Abortion 25-28wks fetal indi	E	0
S2266	Abortion 29-31wks fetal indi	E	0
S2267	Abortion >=32wks fetal indic	E	0
S3655	Antisperm antibodies test	E	0

The following new HCPCS codes were added to the OCE/APC, **effective 01/01/03**

HCPCS	CodeDesc	Status Indicator	APC
A4580	Cast supplies (plaster)	E	0
S5100	Adult daycare services 15min	E	0
S5101	Adult day care per half day	E	0
S5102	Adult day care per diem	E	0
S5105	Centerbased day care per diem	E	0
S5110	Family homecare training 15m	E	0
S5111	Family homecare train/session	E	0
S5115	Nonfamily homecare train/15m	E	0
S5116	Nonfamily HC train/session	E	0
S5120	Chore services per 15 min	E	0
S5121	Chore services per diem	E	0
S5125	Attendant care service /15m	E	0
S5126	Attendant care service /diem	E	0
S5130	Homaker service nos per 15m	E	0
S5131	Homemaker service nos /diem	E	0
S5135	Adult companioncare per 15m	E	0
S5136	Adult companioncare per diem	E	0
S5140	Adult foster care per diem	E	0
S5141	Adult foster care per month	E	0
S5145	Child fostercare th per diem	E	0
S5146	Ther fostercare child /month	E	0
S5150	Unskilled respite care /15m	E	0
S5151	Unskilled respitecare /diem	E	0
S5160	Emer response sys instal&tst	E	0

HCPCS	CodeDesc	Status Indicator	APC
S5161	Emer rspns sys serv permonth	E	0
S5162	Emer rspns system purchase	E	0
S5165	Home modifications per serv	E	0
S5170	Homedelivered prepared meal	E	0
S5175	Laundry serv,ext,prof,/order	E	0
S5180	HH respiratory thrpy in eval	E	0
S5181	HH respiratory thrpy nos/day	E	0
S5185	Med reminder serv per month	E	0
S5190	Wellness assessment by nonph	E	0
S5199	Personal care item nos each	E	0
S8004	Wholebody radiopharm trgcell	E	0

The following new HCPCS codes were added to the OCE/APC, **effective 04/01/03**

HCPCS	CodeDesc	Status Indicator	APC
H2010	Comprehensive med svc 15 min	E	0
H2011	Crisis interven svc, 15 min	E	0
H2012	Behav hlth day treat, per hr	E	0
H2013	Psych hlth fac svc, per diem	E	0
H2014	Skills train and dev, 15 min	E	0
H2015	Comp comm supp svc, 15 min	E	0
H2016	Comp comm supp svc, per diem	E	0
H2017	Psysoc rehab svc, per 15 min	E	0
H2018	Psysoc rehab svc, per diem	E	0
H2019	Ther behav svc, per 15 min	E	0
H2020	Ther behav svc, per diem	E	0
H2021	Com wrap-around sv, 15 min	E	0
H2022	Com wrap-around sv, per diem	E	0
H2023	Supported employ, per 15 min	E	0
H2024	Supported employ, per diem	E	0
H2025	Supp maint employ, 15 min	E	0
H2026	Supp maint employ, per diem	E	0
H2027	Psychoed svc, per 15 min	E	0
H2028	Sex offend tx svc, 15 min	E	0
H2029	Sex offend tx svc, per diem	E	0
H2030	MH clubhouse svc, per 15 min	E	0
H2031	MH clubhouse svc, per diem	E	0
H2032	Activity therapy, per 15 min	E	0
H2033	Multisys ther/juvenile 15min	E	0
H2034	A/D halfway house, per diem	E	0
H2035	A/D tx program, per hour	E	0
H2036	A/D tx program, per diem	E	0
H2037	Dev delay prev dp ch, 15 min	E	0
S0136	Clozapine, 25 mg	E	0
S0137	Didanosine, 25 mg	E	0
S0138	Finasteride, 5 mg	E	0
S0139	Minoxidil, 10 mg	E	0
S0140	Saquinavir, 200 mg	E	0
S0141	Zalcitabine, 0.375 mg	E	0
S2090	Open cryosurg renal	E	0
S2091	Perc cryosurg renal	E	0
S3000	Bilat dil retinal exam	E	0

HCPCS	CodeDesc	Status Indicator	APC
S3820	Comp BRCA1/BRCA2	E	0
S3822	Sing mutation brst/ovar	E	0
S3823	3 mutation brst/ovar	E	0
S3828	Comp MLH1 gene	E	0
S3829	Comp MLH2 gene	E	0
S3833	Comp APC sequence	E	0
S3834	Sing mutation APC	E	0
S5108	Homecare train pt 15 min	E	0
S5109	Homecare train pt session	E	0
S8460	Camisole post-mast	E	0
S8990	Pt or manip for maint	E	0
S9434	Mod solid food suppl	E	0
T2010	PASRR Level I	E	0
T2011	PASRR Level II	E	0

The following new HCPCS codes were added to the OCE/APC, **effective 07/01/03**

HCPCS	CodeDesc	Status Indicator	APC
S0317	Disease mgmt per diem	E	0
S3625	Maternal triple screen test	E	0
S3840	DNA analysis RET-oncogene	E	0
S3841	Gene test retinoblastoma	E	0
S3842	Gene test Hippel-Lindau	E	0
S3843	DNA analysis factor v	E	0
S3844	DNA analysis deafness	E	0
S3845	Gene test alpha-thalassemia	E	0
S3846	Gene test beta-thalassemia	E	0
S3847	Gene test Tay-Sachs	E	0
S3848	Gene test Gaucher	E	0
S3849	Gene test Niemann-Pick	E	0
S3850	Gene test sickle cell	E	0
S3851	Gene test canavan	E	0
S3852	DNA analysis APOE alzheimer	E	0
S9335	HT hemodialysis diem	E	0

The following new HCPCS codes were added to the OCE/APC, **effective 10/01/03**

HCPCS	CodeDesc	Status Indicator	APC
C9207	Injection, bortezomib	G	9207
G0027	Semen analysis	A	0
K0622	Confrm band non str <3in/rol	A	0
K0623	Confrm band sterl>3in/roll	A	0
K0624	Lite compress wth<3in/roll	A	0
K0625	Self adher wth <3 in, roll	A	0
K0626	Self adher wth >=5 in, roll	A	0
S2070	Cysto laser tx ureteral calc	E	0
S2213	Implant gastric stim	E	0
S2230	Implant semi-imp hear	E	0
S2235	Implant auditory brain imp	E	0
S5550	Insulin rapid 5 u	E	0
S5551	Insulin most rapid 5 u	E	0
S5552	Insulin intermed 5 u	E	0

HCPCS	CodeDesc	Status Indicator	APC
S5553	Insulin long acting 5 u	E	0
S5560	Insulin reuse pen 1.5 ml	E	0
S5561	Insulin reuse pen 3 ml	E	0
S5565	Insulin cartridge 150 u	E	0
S5566	Insulin cartridge 300 u	E	0
S5570	Insulin dispos pen 1.5 ml	E	0
S5571	Insulin dispos pen 3 ml	E	0
S8120	O2 contents gas cubic ft	E	0
S8121	O2 contents liquid lb	E	0
S9476	Vestibular rehab per diem	E	0
T2012	Habil ed waiver, per diem	E	0
T2013	Habil ed waiver per hour	E	0
T2014	Habil prevoc waiver, per d	E	0
T2015	Habil prevoc waiver per hr	E	0
T2016	Habil res waiver per diem	E	0
T2017	Habil res waiver 15 min	E	0
T2018	Habil sup empl waiver/diem	E	0
T2019	Habil sup empl waiver 15min	E	0
T2020	Day habil waiver per diem	E	0
T2021	Day habil waiver per 15 min	E	0
T2022	Case management, per month	E	0
T2023	Targeted case mgmt per month	E	0
T2024	Serv asmnt/care plan waiver	E	0
T2025	Waiver service, nos	E	0
T2026	Special childcare waiver/d	E	0
T2027	Spec childcare waiver 15 min	E	0
T2028	Special supply, nos waiver	E	0
T2029	Special med equip, noswaiver	E	0
T2030	Assist living waiver/month	E	0
T2031	Assist living waiver/diem	E	0
T2032	Res care, nos waiver/month	E	0
T2033	Res, nos waiver per diem	E	0
T2034	Crisis interven waiver/diem	E	0
T2035	Utility services waiver	E	0
T2036	Camp overnite waiver/session	E	0
T2037	Camp day waiver/session	E	0
T2038	Comm trans waiver/service	E	0
T2039	Vehicle mod waiver/service	E	0
T2040	Financial mgt waiver/15min	E	0
T2041	Support broker waiver/15 min	E	0
T2042	Hospice routine home care	E	0
T2043	Hospice continuous home care	E	0
T2044	Hospice respite care	E	0
T2045	Hospice general care	E	0
T2046	Hospice long term care, r&b	E	0
T2048	Bh ltc res r&b, per diem	E	0

The following new HCPCS codes were added to the OCE/APC, **effective 01/01/04**

HCPCS	CodeDesc	Status Indicator	APC
0001F	Blood pressure, measured	E	0
0002F	Tobacco use, smoking, assess	E	0
0003F	Tobacco use, non-smoking	E	0
0004F	Tobacco use txmnt counseling	E	0
0005F	Tobacco use txmnt, pharmacol	E	0
0006F	Statin therapy, prescribed	E	0
0007F	Beta-blocker thx prescribed	E	0
0008F	Ace inhibitor thx prescribed	E	0
0009F	Assess anginal symptom/level	E	0
0010F	Assess anginal symptom/level	E	0
0011F	Oral antiplat thx prescribed	E	0
0045T	Whole body photography	N	0
0046T	Cath lavage, mammary duct(s)	T	18
0047T	Cath lavage, mammary duct(s)	T	18
0048T	Implant ventricular device	C	0
0049T	External circulation assist	C	0
0050T	Removal circulation assist	C	0
0051T	Implant total heart system	C	0
00529	Anesth, chest partition view	N	0
0052T	Replace component heart syst	C	0
0053T	Replace component heart syst	C	0
0054T	Bone surgery using computer	B	0
0055T	Bone surgery using computer	B	0
0056T	Bone surgery using computer	B	0
0057T	Uppr gi scope w/ thrml txmnt	B	0
0058T	Cryopreservation, ovary tiss	X	348
0059T	Cryopreservation, oocyte	X	348
0060T	Electrical impedance scan	B	0
0061T	Destruction of tumor, breast	B	0
01173	Anesth, fx repair, pelvis	N	0
01958	Anesth, antepartum manipul	N	0
20982	Ablate, bone tumor(s) perq	T	1557
21685	Hyoid myotomy & suspension	T	252
22532	Lat thorax spine fusion	C	0
22533	Lat lumbar spine fusion	C	0
22534	Lat thor/lumb, add'l seg	C	0
31632	Bronchoscopy/lung bx, add'l	T	76
31633	Bronchoscopy/needle bx add'l	T	76
34805	Endovasc abdo repair w/pros	C	0
35510	Artery bypass graft	C	0
35512	Artery bypass graft	C	0
35522	Artery bypass graft	C	0
35525	Artery bypass graft	C	0
35697	Reimplant artery each	C	0
36555	Insert non-tunnel cv cath	T	32
36556	Insert non-tunnel cv cath	T	32
36557	Insert tunneled cv cath	T	32
36558	Insert tunneled cv cath	T	32
36560	Insert tunneled cv cath	T	115
36561	Insert tunneled cv cath	T	115

HCPCS	CodeDesc	Status Indicator	APC
36563	Insert tunneled cv cath	T	115
36565	Insert tunneled cv cath	T	115
36566	Insert tunneled cv cath	T	1564
36568	Insert tunneled cv cath	T	32
36569	Insert tunneled cv cath	T	32
36570	Insert tunneled cv cath	T	32
36571	Insert tunneled cv cath	T	32
36575	Repair tunneled cv cath	X	187
36576	Repair tunneled cv cath	X	187
36578	Replace tunneled cv cath	X	187
36580	Replace tunneled cv cath	T	32
36581	Replace tunneled cv cath	T	32
36582	Replace tunneled cv cath	T	115
36583	Replace tunneled cv cath	T	115
36584	Replace tunneled cv cath	T	32
36585	Replace tunneled cv cath	T	32
36589	Removal tunneled cv cath	X	187
36590	Removal tunneled cv cath	T	109
36595	Mech remov tunneled cv cath	T	1541
36596	Mech remov tunneled cv cath	T	1541
36597	Reposition venous catheter	X	187
36838	Dist revas ligation, hemo	T	88
37765	Phleb veins - extrem - to 20	T	91
37766	Phleb veins - extrem 20+	T	91
43237	Endoscopic us exam, esoph	T	141
43238	Uppr gi endoscopy w/us fn bx	T	141
47140	Partial removal, donor liver	C	0
47141	Partial removal, donor liver	C	0
47142	Partial removal, donor liver	C	0
53500	Urethrllys, transvag w/ scope	T	168
57425	Laparoscopy, surg, colpopexy	T	130
59070	Transabdom amnioinfus w/ us	T	198
59072	Umbilical cord occlud w/ us	T	198
59074	Fetal fluid drainage w/ us	T	198
59076	Fetal shunt placement, w/ us	T	198
59897	Fetal invas px w/ us	T	198
61537	Removal of brain tissue	C	0
61540	Removal of brain tissue	C	0
61566	Removal of brain tissue	C	0
61567	Incision of brain tissue	C	0
61863	Implant neuroelectrode	C	0
61864	Implant neuroelectrde, add'l	C	0
61867	Implant neuroelectrode	C	0
61868	Implant neuroelectrde, add'l	C	0
63101	Removal of vertebral body	C	0
63102	Removal of vertebral body	C	0
63103	Remove vertebral body add-on	C	0
64449	N block inj, lumbar plexus	T	204
64517	N block inj, hypogas plxs	T	204
64681	Injection treatment of nerve	T	203
65780	Ocular reconst, transplant	T	244

HCPCS	CodeDesc	Status Indicator	APC
65781	Ocular reconst, transplant	T	244
65782	Ocular reconst, transplant	T	244
67912	Correction eyelid w/ implant	T	239
68371	Harvest eye tissue, alograft	T	233
70557	Mri brain w/o dye	S	336
70558	Mri brain w/ dye	S	284
70559	Mri brain w/o & w/ dye	S	337
75998	Fluoroguide for vein device	N	0
76082	Computer mammogram add-on	S	410
76083	Computer mammogram add-on	A	0
76514	Echo exam of eye, thickness	S	265
76937	Us guide, vascular access	N	0
76940	Us guide, tissue ablation	S	268
78804	Tumor imaging, whole body	S	1508
79403	Hematopoetic nuclear therapy	S	1507
84156	Assay of protein, urine	A	0
84157	Assay of protein, other	A	0
85055	Reticulated platelet assay	A	0
85396	Clotting assay, whole blood	N	0
87269	Giardia ag, if	A	0
87329	Giardia ag, eia	A	0
87660	Trichomonas vagin, dir probe	A	0
88112	Cytopath, cell enhance tech	X	343
88361	Immunohistochemistry, tumor	X	344
89220	Sputum specimen collection	X	343
89225	Starch granules, feces	A	0
89230	Collect sweat for test	X	344
89235	Water load test	A	0
89240	Pathology lab procedure	A	0
89268	Insemination of oocytes	X	348
89272	Extended culture of oocytes	X	348
89280	Assist oocyte fertilization	X	348
89281	Assist oocyte fertilization	X	348
89290	Biopsy, oocyte polar body	X	348
89291	Biopsy, oocyte polar body	X	348
89335	Cryopreserve testicular tiss	X	348
89342	Storage/year; embryo(s)	X	348
89343	Storage/year; sperm/semen	X	348
89344	Storage/year; reprod tissue	X	348
89346	Storage/year; oocyte	X	348
89352	Thawing cryopresrved; embryo	X	348
89353	Thawing cryopresrved; sperm	X	348
89354	Thaw cryoprsrvd; reprod tiss	X	348
89356	Thawing cryopresrved; oocyte	X	348
90655	Flu vaccine, 6-35 mo, im	L	0
90698	Dtap-hib-ip vaccine, im	N	0
90715	Tdap vaccine >7 im	N	0
90734	Meningococcal vaccine, im	N	0
91110	Gi tract capsule endoscopy	S	1508
95991	Spin/brain pump refil & main	T	125
97755	Assistive technology assess	A	0

HCPCS	CodeDesc	Status Indicator	APC
99601	Home infusion/visit, 2 hrs	E	0
99602	Home infusion, each addtl hr	E	0
A0800	Amb trans 7pm-7am	A	0
A4216	Sterile water/saline, 10 ml	A	0
A4217	Sterile water/saline, 500 ml	A	0
A4248	Chlorhexidine antisept	N	0
A4366	Ostomy vent	A	0
A4416	Ost pch clsd w barrier/fltr	A	0
A4417	Ost pch w bar/bltinconv/fltr	A	0
A4418	Ost pch clsd w/o bar w fltr	A	0
A4419	Ost pch for bar w flange/flt	A	0
A4420	Ost pch clsd for bar w lk fl	A	0
A4423	Ost pch for bar w lk fl/fltr	A	0
A4424	Ost pch drain w bar & filter	A	0
A4425	Ost pch drain for barrier fl	A	0
A4426	Ost pch drain 2 piece system	A	0
A4427	Ost pch drain/barr lk flng/f	A	0
A4428	Urine ost pouch w faucet/tap	A	0
A4429	Urine ost pouch w bltinconv	A	0
A4430	Ost urine pch w b/bltin conv	A	0
A4431	Ost pch urine w barrier/tapv	A	0
A4432	Os pch urine w bar/fange/tap	A	0
A4433	Urine ost pch bar w lock fln	A	0
A4434	Ost pch urine w lock flng/ft	A	0
A4638	Repl batt pulse gen sys	Y	0
A4671	Disposable cyclor set	B	0
A4672	Drainage ext line, dialysis	B	0
A4673	Ext line w easy lock connect	B	0
A4674	Chem/antisept solution, 8oz	B	0
A4728	Dialysate solution, non-dex	B	0
A6407	Packing strips, non-impreg	A	0
A6441	Pad band w>=3" <5"/yd	A	0
A6442	Conform band n/s w<3"/yd	A	0
A6443	Conform band n/s w>=3"<5"/yd	A	0
A6444	Conform band n/s w>=5"/yd	A	0
A6445	Conform band s w <3"/yd	A	0
A6446	Conform band s w>=3" <5"/yd	A	0
A6447	Conform band s w >=5"/yd	A	0
A6448	Lt compres band <3"/yd	A	0
A6449	Lt compres band >=3" <5"/yd	A	0
A6450	Lt compres band >=5"/yd	A	0
A6451	Mod compres band w>=3"<5"/yd	A	0
A6452	High compres band w>=3"<5"/yd	A	0
A6453	Self-adher band w <3"/yd	A	0
A6454	Self-adher band w>=3" <5"/yd	A	0
A6455	Self-adher band >=5"/yd	A	0
A6456	Zinc paste band w >=3"<5"/yd	A	0
A6550	Neg pres wound ther drsg set	Y	0
A6551	Neg press wound ther canistr	Y	0
A7046	Repl water chamber, PAP dev	Y	0
A7520	Trach/laryn tube non-cuffed	A	0

HCPCS	CodeDesc	Status Indicator	APC
A7521	Trach/laryn tube cuffed	A	0
A7522	Trach/laryn tube stainless	A	0
A7523	Tracheostomy shower protect	A	0
A7524	Tracheostoma stent/stud/bttn	A	0
A7525	Tracheostomy mask	A	0
A7526	Tracheostomy tube collar	A	0
A9280	Alert device, noc	E	0
A9525	Low/iso-osmolar contrast mat	N	0
A9526	Ammonia N-13, per dose	K	9025
A9528	Dx I131 so iodide cap millic	K	1064
A9529	Dx I131 so iodide sol millic	K	1065
A9530	Th I131 so iodide sol millic	K	1065
A9531	Dx I131 so iodide microcurie	N	0
A9532	I-125 serum albumin micro	N	0
A9533	I-131 tositumomab diagnostic	B	0
A9534	I-131 tositumomab therapeut	B	0
A9999	DME supply or accessory, nos	Y	0
C1080	I-131 tositumomab, dx	K	1080
C1081	I-131 tositumomab, tx	K	1081
C1082	In-111 ibritumomab tiuxetan	K	9118
C1083	Yttrium 90 ibritumomab tiuxe	K	9117
C1713	Anchor/screw bn/bn,tis/bn	N	0
C1714	Cath, trans atherectomy, dir	N	0
C1715	Brachytherapy needle	N	0
C1717	Brachytx seed, HDR Ir-192	N	0
C1721	AICD, dual chamber	N	0
C1722	AICD, single chamber	N	0
C1724	Cath, trans atherec,rotation	N	0
C1725	Cath, translumin non-laser	N	0
C1726	Cath, bal dil, non-vascular	N	0
C1727	Cath, bal tis dis, non-vas	N	0
C1728	Cath, brachytx seed adm	N	0
C1729	Cath, drainage	N	0
C1730	Cath, EP, 19 or few elect	N	0
C1731	Cath, EP, 20 or more elec	N	0
C1732	Cath, EP, diag/abl, 3D/vect	N	0
C1733	Cath, EP, othr than cool-tip	N	0
C1750	Cath, hemodialysis,long-term	N	0
C1751	Cath, inf, per/cent/midline	N	0
C1752	Cath,hemodialysis,short-term	N	0
C1753	Cath, intravas ultrasound	N	0
C1754	Catheter, intradiscal	N	0
C1755	Catheter, intraspinal	N	0
C1756	Cath, pacing, transesoph	N	0
C1757	Cath, thrombectomy/embolect	N	0
C1758	Catheter, ureteral	N	0
C1759	Cath, intra echocardiography	N	0

HCPCS	CodeDesc	Status Indicator	APC
C1760	Closure dev, vasc	N	0
C1762	Conn tiss, human(inc fascia)	N	0
C1763	Conn tiss, non-human	N	0
C1764	Event recorder, cardiac	N	0
C1766	Intro/sheath, strble, non-peel	N	0
C1767	Generator, neurostim, imp	N	0
C1768	Graft, vascular	N	0
C1769	Guide wire	N	0
C1770	Imaging coil, MR, insertable	N	0
C1771	Rep dev, urinary, w/sling	N	0
C1772	Infusion pump, programmable	N	0
C1773	Ret dev, insertable	N	0
C1776	Joint device (implantable)	N	0
C1777	Lead, AICD, endo single coil	N	0
C1778	Lead, neurostimulator	N	0
C1779	Lead, pmkr, transvenous VDD	N	0
C1780	Lens, intraocular (new tech)	N	0
C1781	Mesh (implantable)	N	0
C1782	Morcellator	N	0
C1784	Ocular dev, intraop, det ret	N	0
C1785	Pmkr, dual, rate- resp	N	0
C1786	Pmkr, single, rate- resp	N	0
C1787	Patient progr, neurostim	N	0
C1788	Port, indwelling, imp	N	0
C1789	Prosthesis, breast, imp	N	0
C1813	Prosthesis, penile, inflatab	N	0
C1815	Pros, urinary sph, imp	N	0
C1816	Receiver/transmitter, neuro	N	0
C1817	Septal defect imp sys	N	0
C1874	Stent, coated/cov w/del sys	N	0
C1875	Stent, coated/cov w/o del sy	N	0
C1876	Stent, non-coa/non-cov w/del	N	0
C1877	Stent, non-coat/cov w/o del	N	0
C1878	Matrl for vocal cord	N	0
C1879	Tissue marker, implantable	N	0
C1880	Vena cava filter	N	0
C1881	Dialysis access system	N	0
C1882	AICD, other than sing/dual	N	0
C1883	Adapt/ext, pacing/neuro lead	N	0
C1885	Cath, translumin angio laser	N	0
C1887	Catheter, guiding	N	0
C1891	Infusion pump, non-prog, perm	N	0
C1892	Intro/sheath, fixed, peel-away	N	0
C1893	Intro/sheath, fixed, non-peel	N	0

HCPCS	CodeDesc	Status Indicator	APC
C1894	Intro/sheath, non-laser	N	0
C1895	Lead, AICD, endo dual coil	N	0
C1896	Lead, AICD, non sing/dual	N	0
C1897	Lead, neurostim test kit	N	0
C1898	Lead, pmkr, other than trans	N	0
C1899	Lead, pmkr/AICD combination	N	0
C2615	Sealant, pulmonary, liquid	N	0
C2617	Stent, non-cor, tem w/o del	N	0
C2619	Pmkr, dual, non rate-resp	N	0
C2620	Pmkr, single, non rate-resp	N	0
C2621	Pmkr, other than sing/dual	N	0
C2622	Prosthesis, penile, non-inf	N	0
C2625	Stent, non-cor, tem w/del sy	N	0
C2626	Infusion pump, non-prog,temp	N	0
C2627	Cath, suprapubic/cystoscopic	N	0
C2628	Catheter, occlusion	N	0
C2629	Intro/sheath, laser	N	0
C2630	Cath, EP, cool-tip	N	0
C2631	Rep dev, urinary, w/o sling	N	0
C9210	Injection, palonosetron HCL	G	9210
C9211	Inj, alefacept, IV	G	9211
C9212	Inj, alefacept, IM	G	9212
E0118	Crutch substitute	E	0
E0140	Walker w trunk support	Y	0
E0190	Positioning cushion	E	0
E0240	Bath/shower chair	E	0
E0247	Trans bench w/wo comm open	E	0
E0248	HDtrans bench w/wo comm open	E	0
E0300	Enclosed ped crib hosp grade	Y	0
E0301	HD hosp bed, 350-600 lbs	Y	0
E0302	Ex hd hosp bed > 600 lbs	Y	0
E0303	Hosp bed hvy dty xtra wide	Y	0
E0304	Hosp bed xtra hvy dty x wide	Y	0
E0470	RAD w/o backup non-inv intfc	Y	0
E0471	RAD w/backup non inv intrfc	Y	0
E0472	RAD w backup invasive intrfc	Y	0
E0561	Humidifier nonheated w PAP	Y	0
E0562	Humidifier heated used w PAP	Y	0
E0637	Sit-stand w seatlift	Y	0
E0638	Standing frame sys	Y	0
E0675	Pneumatic compression device	Y	0
E0955	Cushioned headrest	Y	0
E0956	W/c lateral trunk/hip suppor	Y	0
E0957	W/c medial thigh support	Y	0
E0960	W/c shoulder harness/straps	Y	0
E0981	Seat upholstery, replacement	Y	0
E0982	Back upholstery, replacement	Y	0
E0983	Add pwr joystick	Y	0

HCPCS	CodeDesc	Status Indicator	APC
E0984	Add pwr tiller	Y	0
E0985	W/c seat lift mechanism	Y	0
E0986	Man w/c push-rim pow assist	Y	0
E1002	Pwr seat tilt	Y	0
E1003	Pwr seat recline	Y	0
E1004	Pwr seat recline mech	Y	0
E1005	Pwr seat recline pwr	Y	0
E1006	Pwr seat combo w/o shear	Y	0
E1007	Pwr seat combo w/shear	Y	0
E1008	Pwr seat combo pwr shear	Y	0
E1009	Add mech leg elevation	Y	0
E1010	Add pwr leg elevation	Y	0
E1019	HD feature power seat	Y	0
E1021	Ex hd feature power seat	Y	0
E1028	W/c manual swingaway	Y	0
E1029	W/c vent tray fixed	Y	0
E1030	W/c vent tray gimbaled	Y	0
E1391	Oxygen concentrator, dual	Y	0
E1634	Peritoneal dialysis clamp	B	0
E2120	Pulse gen sys tx endolymph fl	Y	0
E2201	Man w/ch acc seat w>=20"<24"	Y	0
E2202	Seat width 24-27 in	Y	0
E2203	Frame depth less than 22 in	Y	0
E2204	Frame depth 22 to 25 in	Y	0
E2300	Pwr seat elevation sys	Y	0
E2301	Pwr standing	Y	0
E2310	Electro connect btw control	Y	0
E2311	Electro connect btw 2 sys	Y	0
E2320	Hand chin control	Y	0
E2321	Hand interface joystick	Y	0
E2322	Mult mech switches	Y	0
E2323	Special joystick handle	Y	0
E2324	Chin cup interface	Y	0
E2325	Sip and puff interface	Y	0
E2326	Breath tube kit	Y	0
E2327	Head control interface mech	Y	0
E2328	Head/extremity control inter	Y	0
E2329	Head control nonproportional	Y	0
E2330	Head control proximity switc	Y	0
E2331	Attendant control	Y	0
E2340	W/c wdth 20-23 in seat frame	Y	0
E2341	W/c wdth 24-27 in seat frame	Y	0
E2342	W/c dpth 20-21 in seat frame	Y	0
E2343	W/c dpth 22-25 in seat frame	Y	0
E2350	W/c hd pt wt > 250 lbs	Y	0
E2351	Electronic SGD interface	Y	0
E2360	22nf nonsealed leadacid	Y	0
E2361	22nf sealed leadacid battery	Y	0
E2362	Gr24 nonsealed leadacid	Y	0
E2363	Gr24 sealed leadacid battery	Y	0
E2364	U1nonsealed leadacid battery	Y	0

HCPCS	CodeDesc	Status Indicator	APC
E2365	U1 sealed leadacid battery	Y	0
E2366	Battery charger, single mode	Y	0
E2367	Battery charger, dual mode	Y	0
E2399	Noc interface	Y	0
E2402	Neg press wound therapy pump	Y	0
E2500	SGD digitized pre-rec <=8min	Y	0
E2502	SGD prerec msg >8min <=20min	Y	0
E2504	SGD prerec msg>20min <=40min	Y	0
E2506	SGD prerec msg > 40 min	Y	0
E2508	SGD spelling phys contact	Y	0
E2510	SGD w multi methods msg/accs	Y	0
E2511	SGD sftwre prgrm for PC/PDA	Y	0
E2512	SGD accessory, mounting sys	Y	0
E2599	SGD accessory noc	Y	0
G0302	Pre-op service LVRS complete	S	1509
G0303	Pre-op service LVRS 10-15dos	S	1507
G0304	Pre-op service LVRS 1-9 dos	S	1504
G0305	Post op service LVRS min 6	S	1504
G0306	CBC/diffwbc w/o platelet	A	0
G0307	CBC without platelet	A	0
G0308	ESRD related svc 4+mo< 2yrs	A	0
G0309	ESRD related svc 2-3mo< 2yrs	A	0
G0310	ESRD related svc 1 vs < 2yrs	A	0
G0311	ESRD related svs 4+mo 2-11 y	A	0
G0312	ESRD related svs 2-3 mo 2-11 y	A	0
G0313	ESRD related svs 1 vst2-11y	A	0
G0314	ESRD related svs 4+ mo 12-19 y	A	0
G0315	ESRD related svs 2-3 mo 12-19 y	A	0
G0316	ESRD related svs 1 vist 12-19y	A	0
G0317	ESRD related svs 4+mo 20+y	A	0
G0318	ESRD related svs 2-3 mo 20+y	A	0
G0319	ESRD related svs 1 visit 20+y	A	0
G0320	ESRD related svs home mo<2y	A	0
G0321	ESRD related svs home mo 2-11	A	0
G0322	ESRD relate svs home mo 12-19	A	0
G0323	ESRD relate home mo 20+	A	0
G0324	ESRD relate svs home/dy,2y	A	0
G0325	ESRD relate home/dy 2-11yr	A	0
G0326	ESRD relate home/dy 12-19y	A	0
G0327	ESRD relate home/dy 20+yrs	A	0
G0328	Fecal blood immunoassay	A	0
G0338	Linear accelerator stero pln	S	1516
G0339	Robot lin-radsurg com, first	S	1528
G0340	Robot lin-radsurg fractx 2-5	S	1525
J0152	Adenosine injection	K	917
J0215	Alefcept	B	0
J0583	Bivalirudin	G	9111
J0595	Butorphanol tartrate 1 mg	N	0
J1335	Ertapenem injection	G	9116
J1595	Injection glatiramer acetate	N	0
J2001	Lidocaine injection	N	0

HCPCS	CodeDesc	Status Indicator	APC
J2185	Meropenem	N	0
J2280	Inj, moxifloxacin 100 mg	N	0
J2353	Octreotide injection, depot	K	1207
J2354	Octreotide inj, non-depot	K	7031
J2505	Injection, pegfilgrastim 6mg	G	9119
J2783	Rasburicase	N	0
J3411	Thiamine hcl 100 mg	N	0
J3415	Pyridoxine hcl 100 mg	N	0
J3465	Injection, voriconazole	N	0
J3486	Ziprasidone mesylate	G	9204
J7303	Contraceptive vaginal ring	E	0
J7621	(Levo)albuterol/lpra-bromide	Y	0
J9098	Cytarabine liposome	K	1166
J9178	Inj, epirubicin hcl, 2 mg	K	1167
J9263	Oxaliplatin	B	0
J9395	Injection, Fulvestrant	G	9120
L0112	Cranial cervical orthosis	A	0
L0861	Halo repl liner/interface	A	0
L1831	Knee orth pos locking joint	A	0
L1907	AFO supramalleolar custom	A	0
L1951	AFO spiral prefabricated	A	0
L1971	AFO w/ankle joint, prefab	A	0
L3031	Foot lamin/prepreg composite	E	0
L3917	Prefab metacarpl fx orthosis	A	0
L5673	Socket insert w lock mech	A	0
L5679	Socket insert w/o lock mech	A	0
L5681	Intl custm cong/latyp insert	A	0
L5683	Initial custom socket insert	A	0
L8511	Indwelling trach insert	A	0
L8512	Gel cap for trach voice pros	A	0
L8513	Trach pros cleaning device	A	0
L8514	Repl trach puncture dilator	A	0
L8631	MCP joint repl 2 pc or more	A	0
L8659	Interphalangeal joint repl	A	0
P9051	Blood, l/r, cmv-neg	K	1010
P9052	Platelets, hla-m, l/r, unit	K	1011
P9053	Plt, pher, l/r cmv-neg, irr	K	1020
P9054	Blood, l/r, froz/degly/wash	K	1016
P9055	Plt, aph/pher, l/r, cmv-neg	K	1017
P9056	Blood, l/r, irradiated	K	1018
P9057	RBC, frz/deg/wsh, l/r, irradi	K	1021
P9058	RBC, l/r, cmv-neg, irradi	K	1022
P9059	Plasma, frz between 8-24hour	K	955
P9060	Fr frz plasma donor retested	K	9503
Q0137	Darbepoetin alfa, non-ESRD	K	734
Q0182	Nonmetabolic act d/e tissue	B	0
Q4054	Darbepoetin alfa, esrd use	A	0
Q4055	Epoetin alfa, esrd use	A	0
S0107	Inj, omalizumab 25 mg	E	0
S0115	Bortezomib 3.5 mg	E	0
S2085	Laparoscop gastric bypass	E	0

HCPCS	CodeDesc	Status Indicator	APC
S2095	Transcath emboliz microspher	E	0
S2113	Arthro chondrocyte implant	E	0
S2135	Neurolysis interspace foot	E	0
S2225	Myringotomy laser-assist	E	0
S2362	Kyphoplasty, first vertebra	E	0
S2363	Kyphoplasty, each addl	E	0
S3853	Gene test myo musclr dyst	E	0
S8075	CAD of digital mammogr	E	0
S8948	Low-level laser trmt 15 min	E	0
T2101	Breast milk proc/store/dist	E	0
T5001	Special position seat/vehicl	E	0
T5999	Supply, nos	E	0
V2121	Lenticular lens, single	A	0
V2221	Lenticular lens, bifocal	A	0
V2321	Lenticular lens, trifocal	A	0
V2745	Tint, any color/solid/grad	A	0
V2756	Eye glass case	E	0
V2761	Mirror coating	B	0
V2762	Polarization, any lens	A	0
V2782	Lens, 1.54-1.65 p/1.60-1.79g	A	0
V2783	Lens, >= 1.66 p/>=1.80 g	A	0
V2784	Lens polycarb or equal	A	0
V2786	Occupational multifocal lens	A	0
V2797	Vis item/svc in other code	A	0

DELETED HCPCS/CPT PROCEDURE CODES

The following HCPCS code was deleted from the OCE/APC, **effective 01/01/01**

HCPCS	CodeDesc	Status Indicator	APC
A6020	Collagen wound dressing	A	0

The following HCPCS codes were deleted from the OCE/APC, **effective 04/01/03**

HCPCS	CodeDesc	Status Indicator	APC
S8945	PT phonophoresis 30 mins	E	0
S9524	Nursing services related to	E	0
T1008	Day Treatment for Individual	E	0
T1011	Alcohol/Substance Abuse NOC	E	0

The following HCPCS codes were deleted from the OCE/APC, **effective 07/01/03**

HCPCS	CodeDesc	Status Indicator	APC
S9802	Specialty drug admin/nsg srv	E	0
S9803	Each additional hour	E	0

The following HCPCS code was deleted from the OCE/APC, **effective 10/01/03**

HCPCS	CodeDesc	Status Indicator	APC
S9546	Home inf blood prod nurs ser	E	0

The following HCPCS codes were deleted from the OCE/APC, **effective 01/01/04**

HCPCS	CodeDesc	Status Indicator	APC
76085	Computer mammogram add-on	A	0
A9518	I-131 sodium iodide solution	K	1348
A9603	I-131sodiumiodidecap per mci	N	0
C9111	Inj, bivalirudin, 250mg vial	G	9111
C9116	Ertapenem sodium, per 1 gm	G	9116
C9120	Injection, fulvestrant	G	9120
C9204	Ziprasidone mesylate	G	9204
E1091	Wheelchair youth	B	0
G0236	Digital film convert diag ma	S	706
G0256	Prostate Brachy w palladium	T	649
G0261	Prostate brachy w iodine see	T	684
G0273	Pretx planning, non-Hodgkins	S	718
G0274	Radiopharm tx, non-Hodgkins	S	725
J0151	Adenosine injection	K	917
J2352	Octreotide acetate injection	K	7031
Q4053	Pegfilgrastim, per 1 mg	G	9119

HCPCS - APC AND STATUS INDICATOR CHANGES *

A blank in a field indicates - no change

The following codes had SI changes, **effective 08/01/00**

HCPCS	Old APC	New APC	Old SI	New SI
A4221			A	Y
A4222			A	Y
A4230			A	Y
A4231			A	Y
A4232			A	Y
A4253			A	Y
A4254			A	Y
A4255			A	Y
A4256			A	Y
A4258			A	Y
A4259			A	Y
A4265			A	Y
A4556			A	Y
A4557			A	Y
A4558			A	Y
A4595			A	Y

HCPCS	Old APC	New APC	Old SI	New SI
A4611			A	Y
A4612			A	Y
A4613			A	Y
A4615			A	Y
A4616			A	Y
A4617			A	Y
A4618			A	Y
A4619			A	Y
A4620			A	Y
A4621			A	Y
A4624			A	Y
A4628			A	Y
A4630			A	Y
A4631			A	Y
A4635			A	Y
A4636			A	Y
A4637			A	Y
A4640			A	Y
A7000			A	Y
A7001			A	Y
A7002			A	Y
A7003			A	Y
A7004			A	Y
A7005			A	Y
A7006			A	Y
A7007			A	Y
A7008			A	Y
A7009			A	Y
A7010			A	Y
A7011			A	Y
A7012			A	Y
A7013			A	Y
A7014			A	Y
A7015			A	Y
A7016			A	Y
A7017			A	Y
E0100			A	Y
E0105			A	Y
E0110			A	Y
E0111			A	Y
E0112			A	Y
E0113			A	Y
E0114			A	Y
E0116			A	Y
E0130			A	Y
E0135			A	Y
E0141			A	Y
E0142			A	Y
E0143			A	Y
E0144			A	Y
E0145			A	Y

HCPCS	Old APC	New APC	Old SI	New SI
E0146			A	Y
E0147			A	Y
E0153			A	Y
E0154			A	Y
E0155			A	Y
E0156			A	Y
E0157			A	Y
E0158			A	Y
E0159			A	Y
E0160			A	Y
E0161			A	Y
E0162			A	Y
E0163			A	Y
E0164			A	Y
E0165			A	Y
E0166			A	Y
E0167			A	Y
E0175			A	Y
E0176			A	Y
E0177			A	Y
E0178			A	Y
E0179			A	Y
E0180			A	Y
E0181			A	Y
E0182			A	Y
E0184			A	Y
E0185			A	Y
E0186			A	Y
E0187			A	Y
E0188			E	Y
E0189			E	Y
E0191			A	Y
E0192			A	Y
E0193			A	Y
E0194			A	Y
E0196			A	Y
E0197			A	Y
E0198			A	Y
E0199			A	Y
E0200			A	Y
E0202			A	Y
E0205			A	Y
E0210			A	Y
E0215			A	Y
E0217			A	Y
E0218			E	Y
E0220			A	Y
E0225			A	Y
E0230			A	Y
E0235			A	Y
E0236			A	Y

HCPCS	Old APC	New APC	Old SI	New SI
E0238			A	Y
E0239			A	Y
E0249			A	Y
E0250			A	Y
E0251			A	Y
E0255			A	Y
E0256			A	Y
E0260			A	Y
E0261			A	Y
E0265			A	Y
E0266			A	Y
E0271			A	Y
E0272			A	Y
E0275			A	Y
E0276			A	Y
E0277			A	Y
E0280			A	Y
E0290			A	Y
E0291			A	Y
E0292			A	Y
E0293			A	Y
E0294			A	Y
E0295			A	Y
E0296			A	Y
E0297			A	Y
E0305			A	Y
E0310			A	Y
E0325			A	Y
E0326			A	Y
E0371			A	Y
E0372			A	Y
E0373			A	Y
E0424			A	Y
E0431			A	Y
E0434			A	Y
E0439			A	Y
E0441			A	Y
E0442			A	Y
E0443			A	Y
E0444			A	Y
E0450			A	Y
E0455			A	Y
E0457			A	Y
E0459			A	Y
E0460			A	Y
E0462			A	Y
E0480			A	Y
E0500			A	Y
E0550			A	Y
E0555			A	Y
E0560			A	Y

HCPCS	Old APC	New APC	Old SI	New SI
E0565			A	Y
E0570			A	Y
E0575			A	Y
E0580			A	Y
E0585			A	Y
E0590			A	Y
E0600			A	Y
E0601			A	Y
E0602			E	Y
E0605			A	Y
E0606			A	Y
E0607			A	Y
E0608			A	Y
E0609			A	Y
E0610			A	Y
E0615			A	Y
E0621			A	Y
E0627			A	Y
E0628			A	Y
E0629			A	Y
E0630			A	Y
E0635			A	Y
E0650			A	Y
E0651			A	Y
E0652			A	Y
E0655			A	Y
E0660			A	Y
E0665			A	Y
E0666			A	Y
E0667			A	Y
E0668			A	Y
E0669			A	Y
E0671			A	Y
E0672			A	Y
E0673			A	Y
E0690			A	Y
E0720			A	Y
E0730			A	Y
E0731			A	Y
E0740			E	Y
E0744			A	Y
E0745			A	Y
E0747			A	Y
E0748			A	Y
E0760			E	Y
E0776			A	Y
E0779			A	Y
E0780			A	Y
E0781			A	Y
E0784			A	Y
E0791			A	Y

HCPCS	Old APC	New APC	Old SI	New SI
E0840			A	Y
E0850			A	Y
E0855			A	Y
E0860			A	Y
E0870			A	Y
E0880			A	Y
E0890			A	Y
E0900			A	Y
E0910			A	Y
E0920			A	Y
E0930			A	Y
E0935			A	Y
E0940			A	Y
E0941			A	Y
E0942			A	Y
E0943			A	Y
E0944			A	Y
E0945			A	Y
E0946			A	Y
E0947			A	Y
E0948			A	Y
E0962			B	Y
E0963			B	Y
E0964			B	Y
E0965			B	Y
E0967			B	Y
E0968			B	Y
E0969			B	Y
E0977			B	Y
E0980			B	Y
E0994			B	Y
E0997			B	Y
E0998			B	Y
E0999			B	Y
E1001			B	Y
E1031			B	Y
E1065			B	Y
E1210			B	Y
E1211			B	Y
E1225			B	Y
E1227			B	Y
E1228			B	Y
E1230			B	Y
E1296			B	Y
E1297			B	Y
E1298			B	Y
E1310			A	Y
E1340			A	Y
E1353			A	Y
E1355			A	Y
E1372			A	Y

HCPCS	Old APC	New APC	Old SI	New SI
E1375			A	Y
E1377			E	Y
E1378			E	Y
E1379			E	Y
E1380			E	Y
E1381			E	Y
E1382			E	Y
E1383			E	Y
E1384			E	Y
E1385			E	Y
E1390			A	Y
E1399			A	N
E1405			A	Y
E1406			A	Y
E1700			A	Y
E1701			A	Y
E1702			A	Y
E1800			A	Y
E1805			A	Y
E1810			A	Y
E1815			A	Y
E1820			A	Y
E1825			A	Y
E1830			A	Y
J2545			A	Y
J7608			A	Y
J7618			A	Y
J7619			A	Y
J7628			A	Y
J7629			A	Y
J7631			A	Y
J7635			A	Y
J7636			A	Y
J7637			A	Y
J7638			A	Y
J7639			A	Y
J7642			A	Y
J7643			A	Y
J7644			A	Y
J7648			A	Y
J7649			A	Y
J7658			A	Y
J7659			A	Y
J7668			A	Y
J7669			A	Y
J7680			A	Y
J7681			A	Y
J7682			A	Y
J7683			A	Y
J7684			A	Y
J7699			A	Y

HCPCS	Old APC	New APC	Old SI	New SI
J7799			A	Y
K0001			A	Y
K0002			A	Y
K0003			A	Y
K0004			A	Y
K0005			A	Y
K0006			A	Y
K0007			A	Y
K0009			A	Y
K0010			A	Y
K0011			A	Y
K0012			A	Y
K0014			A	Y
K0015			A	Y
K0016			A	Y
K0017			A	Y
K0018			A	Y
K0019			A	Y
K0020			A	Y
K0021			A	Y
K0022			A	Y
K0023			A	Y
K0024			A	Y
K0025			A	Y
K0026			A	Y
K0027			A	Y
K0028			A	Y
K0029			A	Y
K0030			A	Y
K0031			A	Y
K0032			A	Y
K0033			A	Y
K0034			A	Y
K0035			A	Y
K0036			A	Y
K0037			A	Y
K0038			A	Y
K0039			A	Y
K0040			A	Y
K0041			A	Y
K0042			A	Y
K0043			A	Y
K0044			A	Y
K0045			A	Y
K0046			A	Y
K0047			A	Y
K0048			A	Y
K0049			A	Y
K0050			A	Y
K0051			A	Y
K0052			A	Y

HCPCS	Old APC	New APC	Old SI	New SI
K0053			A	Y
K0054			A	Y
K0055			A	Y
K0056			A	Y
K0057			A	Y
K0058			A	Y
K0059			A	Y
K0060			A	Y
K0061			A	Y
K0062			A	Y
K0063			A	Y
K0064			A	Y
K0065			A	Y
K0066			A	Y
K0067			A	Y
K0068			A	Y
K0069			A	Y
K0070			A	Y
K0071			A	Y
K0072			A	Y
K0073			A	Y
K0074			A	Y
K0075			A	Y
K0076			A	Y
K0077			A	Y
K0078			A	Y
K0079			A	Y
K0080			A	Y
K0081			A	Y
K0082			A	Y
K0083			A	Y
K0084			A	Y
K0085			A	Y
K0086			A	Y
K0087			A	Y
K0088			A	Y
K0089			A	Y
K0090			A	Y
K0091			A	Y
K0092			A	Y
K0093			A	Y
K0094			A	Y
K0095			A	Y
K0096			A	Y
K0097			A	Y
K0098			A	Y
K0099			A	Y
K0100			A	Y
K0101			A	Y
K0102			A	Y
K0103			A	Y

HCPCS	Old APC	New APC	Old SI	New SI
K0104			A	Y
K0105			A	Y
K0106			A	Y
K0107			A	Y
K0108			A	Y
K0114			A	Y
K0115			A	Y
K0116			A	Y
K0182			A	Y
K0183			A	Y
K0184			A	Y
K0185			A	Y
K0186			A	Y
K0187			A	Y
K0188			A	Y
K0189			A	Y
K0195			A	Y
K0268			A	Y
K0269			A	Y
K0270			A	Y
K0283			A	Y
K0452			A	Y
K0455			A	Y
K0456			A	Y
K0457			A	Y
K0458			A	Y
K0459			A	Y
K0460			A	Y
K0461			A	Y
K0462			A	Y
K0501			A	Y
K0529			A	Y
K0531			A	Y
K0532			A	Y
K0533			A	Y
K0534			A	Y
L3964			A	Y
L3965			A	Y
L3966			A	Y
L3968			A	Y
L3969			A	Y
L3970			A	Y
L3972			A	Y
L3974			A	Y

The following codes had SI changes, **effective 01/01/01**

HCPCS	Old APC	New APC	Old SI	New SI
A4608			A	Y
A7018			A	Y
A7019			A	Y
A7020			A	Y
E0148			A	Y
E0149			A	Y
E0168			A	Y
E0571			A	Y
E0572			A	Y
E0574			A	Y
E0617			A	Y
E0765			A	Y
E1035			B	Y
K0538			A	Y
K0539			A	Y
K0540			A	Y
K0541			A	Y
K0542			A	Y
K0543			A	Y
K0544			A	Y
K0545			A	Y
K0546			A	Y
K0547			A	Y

The following codes had SI changes, **effective 04/01/01**

HCPCS	Old APC	New APC	Old SI	New SI
K0549			A	Y
K0550			A	Y

The following codes had SI changes, **effective 07/01/01**

HCPCS	Old APC	New APC	Old SI	New SI
A4570			N	E
K0551			A	Y

The following codes had SI changes, **effective 04/01/02**

HCPCS	Old APC	New APC	Old SI	New SI
A4257			A	Y
E0169			A	Y
E0221			A	Y
E0316			A	Y
E0482			A	Y
E0620			A	Y
E0765			E	Y
E1801			A	Y
E1806			A	Y

HCPCS	Old APC	New APC	Old SI	New SI
E1811			A	Y
E1816			A	Y
E1818			A	Y
E1821			A	Y
E1840			A	Y
E2000			A	Y
E2100			A	Y
E2101			A	Y
H1000			A	E
H1001			A	E
H1002			A	E
H1003			A	E
H1004			A	E
H1005			A	E

The following codes had SI changes, **effective 01/01/03**

HCPCS	Old APC	New APC	Old SI	New SI
A4609			A	Y
A4610			A	Y
A4632			A	Y
A4633			A	Y
A4639			A	Y
A7025			A	Y
A7026			A	Y
A7030			A	Y
A7031			A	Y
A7032			A	Y
A7033			A	Y
A7034			A	Y
A7035			A	Y
A7036			A	Y
A7037			A	Y
A7038			A	Y
A7039			A	Y
A7044			A	Y
E0117			A	Y
E0454			A	Y
E0461			A	Y
E0483			A	Y
E0484			A	Y
E0636			A	Y
E0691			A	Y
E0692			A	Y
E0693			A	Y
E0694			A	Y
E0701			A	Y
E1011			A	Y
E1012			A	Y
E1013			A	Y
E1014			A	Y

HCPCS	Old APC	New APC	Old SI	New SI
E1015			A	Y
E1016			A	Y
E1017			A	Y
E1018			A	Y
E1020			A	Y
E1025			A	Y
E1026			A	Y
E1027			A	Y
E1037			A	Y
E1038			A	Y
E1231			A	Y
E1232			A	Y
E1233			A	Y
E1234			A	Y
E1235			A	Y
E1236			A	Y
E1237			A	Y
E1238			A	Y
E1802			A	Y

The following codes had SI changes, **effective 04/01/03**

HCPCS	Old APC	New APC	Old SI	New SI
A4232			E	Y
A4632			E	Y

The following codes had SI and/or APC changes, **effective 01/01/04**

HCPCS	Old APC	New APC	Old SI	New SI
0003T	706	1501		
0009T	980	1557		
0027T	976	1547		
10022	2	36		
11001	13	12		
11010	22	19		
11011	22	19		
11012	22	19		
11057	12	13		
11302	13	12		
11404	20	21		
11623	20	21		
15342	25	24		
15781	22	19		
15782	22	19		
15786	13	12		
15793	13	12		
15836	20	21		
15837	20	21		
15838	20	21		
15839	20	21		
15851	13	16		
15860	706	1501		

HCPCS	Old APC	New APC	Old SI	New SI
15920	22	19		
16000	13	12		
16025	13	12		
17111	11	10		
19020	8	7		
19350	29	28		
20225	19	20		
23931	6	7		
27040	21	20		
27041	22	19		
27603	8	7		
28001	8	7		
28193	21	20		
28210	55	56		
28737	55	56		
28750	55	56		
31233	73	72		
31300	256	254		
31505	72	71		
31575	71	72		
31630	76	415		
31631	76	415		
31640	76	415		
31641	76	415		
31720	72	71		
33224	976	1547		
33225	977	1550		
33240			E	B
33249			E	B
36262	109	124		
36536	973	1541		
36537	973	1541		
41251	252	251		
42660	252	251		
42800	252	253		
43219	141	384		
43256	141	384		
43268	151	384		
43269	151	384		
43752	0	121	B	T
44370	142	384		
44379	142	384		
44383	142	384		
44397	143	384		
45000	149	148		
45020	149	148		
45150	150	149		
45317	146	147		
45327	147	384		
45345	147	384		
45387	143	384		

HCPCS	Old APC	New APC	Old SI	New SI
45500	150	149		
46040	155	149		
47011	5	37		
47370	130	131		
47371	130	131		
47382	980	1557		
47399	5	37		
47530	121	122		
48511	5	37		
50021	5	37		
50688	121	122		
51000	165	164		
51710	121	122		
52282	163	385	T	S
52347	160	161		
52351	160	161		
53040	166	167		
53215	168	166		
53235	168	166		
53440	179	385	T	S
53442	166	167		
53444	179	385	T	S
53445	179	386	T	S
53447	179	386	T	S
53460	168	166		
53853	977	1550		
54250	165	164		
54400	182	385	T	S
54401	182	386	T	S
54405	182	386	T	S
54410	182	386	T	S
54416	182	385	T	S
54500	5	37		
57109	202	195		
57120	194	195		
57155	192	193		
57230	194	195		
58346	192	193		
58353	193	195		
58555	194	190		
58560	190	387		
58561	190	387		
58563	190	387		
58578	190	130		
58600	194	195		
58800	195	193		
58900	195	193		
58920	202	195		
58925	202	195		
59412	199	700		
61316			N	C

HCPCS	Old APC	New APC	Old SI	New SI
61517			N	C
61623	979	1555		
61885	222	39	T	S
62148			N	C
62160			N	C
62225	121	122		
63650	225	40		
64555	225	40		
64560	225	40		
64561	225	40		
64565	225	40		
64575	225	40		
64581	225	40		
67110	235	236		
67820	230	698		
67922	239	240		
69410	252	251		
69420	251	252		
72198			B	E
72285	274	388		
72295	274	388		
76120	260	272		
76362	0	332	N	S
76393	0	335	N	S
76394	0	335	N	S
76490	0	268	N	S
76977	265	340	S	X
77301	712	1510		
77418	710	412		
77523	712	1511		
77525	712	1511		
78000	290	389		
78001	290	389		
78003	290	389		
78006	291	390		
78007	292	391		
78010	291	390		
78011	292	390		
78015	291	406		
78016	292	406		
78018	292	406		
78020	666	399		
78070	292	391		
78075	292	391		
78099	291	390		
78102	291	400		
78103	291	400		
78104	291	400		
78110	290	393		
78111	290	393		
78120	290	393		

HCPCS	Old APC	New APC	Old SI	New SI
78121	290	393		
78122	290	393		
78130	290	393		
78135	290	393		
78140	290	393		
78160	290	393		
78162	290	393		
78170	290	393		
78172	290	393		
78185	291	400		
78190	290	389		
78191	292	389		
78195	292	400		
78199	291	400		
78201	291	394		
78202	291	394		
78205	291	394		
78206	292	394		
78215	291	394		
78216	291	394		
78220	291	394		
78223	292	394		
78230	292	395		
78231	292	395		
78232	292	395		
78258	291	395		
78261	291	395		
78262	292	395		
78264	292	395		
78270	290	389		
78271	290	389		
78272	290	389		
78278	292	395		
78282	290	395		
78290	292	395		
78291	292	395		
78299	291	395		
78300	291	396		
78305	291	396		
78306	291	396		
78315	292	396		
78320	291	396		
78399	291	396		
78414	290	398		
78428	291	398		
78445	291	397		
78455	290	397		
78456	292	397		
78457	291	397		
78458	292	397		
78460	286	398		

HCPCS	Old APC	New APC	Old SI	New SI
78461	286	377		
78464	286	398		
78465	286	377		
78466	291	398		
78468	291	398		
78469	291	398		
78472	286	398		
78473	286	376		
78478	666	399		
78480	666	399		
78481	286	398		
78483	286	376		
78494	286	398		
78496	666	399		
78499	291	398		
78580	291	401		
78584	292	378		
78585	292	378		
78586	291	401		
78587	291	401		
78588	292	378		
78591	291	401		
78593	291	401		
78594	291	401		
78596	292	378		
78599	291	401		
78600	291	402		
78601	291	402		
78605	291	402		
78606	291	402		
78607	291	402		
78610	291	402		
78615	291	402		
78630	292	403		
78635	292	403		
78645	292	403		
78647	292	403		
78650	292	403		
78660	291	403		
78699	291	402		
78700	291	404		
78701	291	404		
78704	291	404		
78707	291	404		
78708	292	405		
78709	292	405		
78710	291	404		
78715	291	404		
78725	290	389		
78730	291	404		
78740	292	404		

HCPCS	Old APC	New APC	Old SI	New SI
78760	291	404		
78761	291	404		
78799	291	404		
78800	292	406		
78801	292	406		
78802	292	406		
78803	292	406		
78805	292	406		
78806	292	406		
78807	292	406		
78999	291	389		
79000	294	407		
79001	294	407		
79020	294	407		
79030	294	407		
79035	294	407		
79100	294	407		
79200	294	407		
79300	294	407		
79400	294	407		
79420	294	407		
79440	294	407		
79999	294	407		
86077	343	0	X	A
86078	344	0	X	A
86079	344	0	X	A
86880	341	409		
86885	341	409		
86886	341	409		
86900	341	409		
86901	345	409		
88362	343	344		
89350	344	343		
89360	344	343		
90296	356	0	K	N
90385	0	356	N	K
90393	0	356	N	K
90396	0	356	N	K
90581	356	0	K	N
90586	0	356	N	K
90675	0	356	N	K
90676	0	356	N	K
90716	0	355	N	K
90725	0	355	N	K
90748	0	355	E	K
90901	321	0	S	A
90918			A	E
90919			A	E
90920			A	E
90921			A	E
90922			A	E

HCPCS	Old APC	New APC	Old SI	New SI
90923			A	E
90924			A	E
90925			A	E
92019	698	699	S	T
92510			E	A
92543	660	363		
92588	660	363		
92601	0	365	A	X
92602	0	365	A	X
92603	0	365	A	X
92604	0	365	A	X
92613			A	E
92973	973	1541		
92974	981	1559		
93580	981	1559		
93581	981	1559		
94010	367	368		
94015	367	369		
95250	972	1540		
95831			N	A
95832			N	A
95833			N	A
95834			N	A
95851			N	A
95852			N	A
95858	218	215		
95870	218	215		
95900	218	215		
95903	218	215		
95955	214	213		
95965	717	1528		
95966	714	1516		
95967	712	1511		
96000	708	1503		
96001	708	1503		
96002	708	1503		
96003	708	1503		
96105	373	0	X	A
96567	972	1540		
96570	973	1541		
96571	973	1541		
A0380			E	A
A0390			E	A
A4220			A	N
A4590			N	E
A4642	0	704	N	K
A9500	0	1600	N	K
A9502	0	705	N	K
A9505	0	1603	N	K
A9517	0	1064	N	K
A9522			N	B

HCPCS	Old APC	New APC	Old SI	New SI
A9523			N	B
A9524	0	9100	N	K
C1079	0	1079	N	K
C1088	980	1557		
C1166	0	1166	N	K
C1200	0	1200	N	K
C1201	0	1201	N	K
C1765	1765	0	H	N
C2618	2618	0	H	N
C2633			H	K
C9000	9000	0	K	N
C9008	0	9008	N	K
C9013	0	9013	N	K
C9129	9129	1586	S	T
C9202			G	K
C9701	980	1557		
C9703	979	1555		
C9704	981	1556		
C9705	972	1575		
C9706	973	1576		
C9707	974	1577		
C9709	976	1578		
C9710	977	1579		
C9711	978	1552		
C9712	979	1580		
C9713	980	1581		
C9714	981	1582		
C9715	982	1583		
C9716	983	1584		
C9717	984	1585		
E0958			B	A
E0972			B	A
E1050			B	A
E1060			B	A
E1070			B	A
E1083			B	A
E1084			B	A
E1085			B	A
E1086			B	A
E1087			B	A
E1088			B	A
E1089			B	A
E1090			B	A
E1092			B	A
E1093			B	A
E1100			B	A
E1110			B	A
E1130			B	A
E1140			B	A
E1150			B	A
E1160			B	A

HCPCS	Old APC	New APC	Old SI	New SI
E1170			B	A
E1171			B	A
E1172			B	A
E1180			B	A
E1190			B	A
E1195			B	A
E1200			B	A
E1212			B	A
E1213			B	A
E1220			B	A
E1221			B	A
E1222			B	A
E1223			B	A
E1224			B	A
E1240			B	A
E1250			B	A
E1260			B	A
E1270			B	A
E1280			B	A
E1285			B	A
E1290			B	A
E1295			B	A
G0125	714	1516		
G0173	721	1528		
G0210	714	1516		
G0211	714	1516		
G0212	714	1516		
G0213	714	1516		
G0214	714	1516		
G0215	714	1516		
G0216	714	1516		
G0217	714	1516		
G0218	714	1516		
G0220	714	1516		
G0221	714	1516		
G0222	714	1516		
G0223	714	1516		
G0224	714	1516		
G0225	714	1516		
G0226	714	1516		
G0227	714	1516		
G0228	714	1516		
G0229	714	1516		
G0230	714	1516		
G0231	714	1516		
G0232	714	1516		
G0233	714	1516		
G0234	714	1516		
G0237	706	411		
G0238	706	411		
G0239	706	411		

HCPCS	Old APC	New APC	Old SI	New SI
G0242	714	1516		
G0243	721	1528		
G0248	708	1503		
G0249	708	1503		
G0251	713	1513		
G0253	714	1516		
G0254	714	1516		
G0262	711	1508		
G0282			E	A
G0288	975	1506	T	S
G0292	708	1503		
G0293	710	1505		
G0294	707	1502		
G0296	714	1516		
G3001	9129	1522		
J0150	0	379	N	K
J0205	0	900	F	K
J0256	0	901	F	K
J0288	0	9024	N	K
J0289	0	9024	N	K
J0350	0	1606	N	K
J0587			G	K
J0637			G	K
J1245	0	380	N	K
J1438	0	1608	N	K
J1570	0	907	N	K
J1626	0	764	N	K
J1785	0	916	F	K
J2020	0	9001	N	K
J2260	0	7007	N	K
J2790	0	884	N	K
J2820	0	731	N	K
J2995	0	911	N	K
J2997	0	7048	N	K
J3365	0	7036	N	K
J7197	930	0	K	N
J7310	0	913	N	K
J7317	0	7316	N	K
J7330	1059	0	K	B
J7517			G	K
J7525	0	9006	N	K
J7599			B	N
J8510	0	7015	N	K
J9000	0	847	N	K
J9010			G	K
J9017			G	K
J9020	0	814	N	K
J9031	0	809	N	K
J9050	812	0	K	N
J9070	0	815	N	K
J9093	0	816	N	K

HCPCS	Old APC	New APC	Old SI	New SI
J9100	0	817	N	K
J9130	0	819	N	K
J9165	822	0	K	N
J9181	0	824	N	K
J9213	0	834	N	K
J9214	0	836	N	K
J9215	0	865	N	K
J9219			G	K
J9266	843	0	K	N
J9270	0	860	N	K
J9300	0	9004	F	K
J9320	0	850	N	K
J9340	0	851	N	K
J9999			B	N
K0548			A	N
K0552			A	Y
K0600			A	Y
K0601			A	Y
K0602			A	Y
K0603			A	Y
K0604			A	Y
K0605			A	Y
K0606			A	Y
K0607			A	Y
K0608			A	Y
K0609			A	Y
K0610			A	Y
K0611			A	Y
K0612			A	Y
K0613			A	Y
K0614			A	Y
K0615			A	Y
K0616			A	Y
K0617			A	Y
P9011	0	957	B	K
Q0085	118	0	S	E
Q0166	0	765	N	K
Q0180	0	763	N	K
Q2003	0	7019	N	K
Q2007	0	7026	N	K
Q2008	0	7027	N	K
Q2009	0	7028	N	K
Q2013	0	7040	N	K
Q2018	0	7037	N	K
Q3002	0	1619	N	K
Q3005	0	1622	N	K
Q3007	0	1624	N	K
Q3012	0	1089	N	K
V5362			A	E
V5363			A	E
V5364			A	E

HCPCS - EDIT ASSIGNMENTS

The following codes were **assigned to Condition Bilateral, effective 01/01/04**

HCPCS
20982
35510
35512
35525
36557
36558
36560
36561
36565
36566
36570
36571
36589
36838
37765
37766
61863
61864
61867
61868
65780
65781
65782
67912

The following codes were **assigned to Blood Products, effective 01/01/04**

HCPCS
P9051
P9052
P9053
P9054
P9055
P9056
P9057
P9058
P9059
P9060

The following codes were **assigned to** Female Only, **effective 01/01/04**

HCPCS
57425
59070
59072
59074
59076
59897

The following code was **assigned to** Edit 9 “Non-covered for reasons other than Statute”, **effective 01/01/04**

HCPCS
72198

The following codes were **removed from** Edit 9 “Non-covered for reasons other than Statute”, **effective 01/01/01**

HCPCS
99375
99378
E0740
E0760

The following code was **removed from** Edit 9 “Non-covered for reasons other than Statute”, **effective 01/01/04**

HCPCS
G0282

The following code was **assigned to** Edit 13 “Service Not Paid by Medicare”, **effective 07/01/01**

HCPCS
A4570

The following code was **assigned to** Edit 13 “Service Not Paid by Medicare”, **effective 01/01/03**

HCPCS
A4580

The following code was **assigned to** Edit 13 “Service Not Paid by Medicare”, **effective 01/01/04**

HCPCS
A4590

The following codes were **removed from** Edit 13 “Service Not Paid by Medicare”, **effective 01/01/01**

HCPCS
E0188
E0189
E0218
E1377
E1378
E1379
E1380
E1381
E1382
E1383
E1384
E1385

The following codes were **removed from** Edit 13 “Service Not Paid by Medicare”, **effective 01/01/04**

HCPCS
43752
99002
99140

The following codes were **assigned to** Edit 14 “Not Included in OPPS”, **effective 01/01/04**

HCPCS
33240
33249
92613

The following codes were **removed from** Edit 14 “Not Included in OPPS”, **effective 08/01/00**

HCPCS
99375
99378
E0188
E0189
E0218
E0602
E0740
E0760
E0962
E0963
E0964
E0965
E0967
E0968
E0969
E0977

HCPCS
E0980
E0994
E0997
E0998
E0999
E1001
E1031
E1065
E1210
E1211
E1225
E1227
E1228
E1230
E1296
E1297
E1298
E1377
E1378
E1379
E1380
E1381
E1382
E1383
E1384
E1385

The following codes were **removed from** Edit 14 “Not Included in OPPS”, **effective 01/01/01**

HCPCS
E1035

The following codes were **removed from** Edit 14 “Not Included in OPPS”, **effective 01/01/04**

HCPCS
E0958
E0972
E1050
E1060
E1070
E1083
E1084
E1085
E1086
E1087
E1088
E1089
E1090
E1091
E1092
E1093
E1100

HCPCS
E1110
E1130
E1140
E1150
E1160
E1170
E1171
E1172
E1180
E1190
E1195
E1200
E1212
E1213
E1220
E1221
E1222
E1223
E1224
E1240
E1250
E1260
E1270
E1280
E1285
E1290
E1295
L3350

The following codes were **assigned to** Edit 28 “Not Recognized by Medicare”, **effective 08/01/00**

HCPCS
99375
99378

The following codes were **assigned to** Edit 28 “Not Recognized by Medicare”, **effective 04/01/02**

HCPCS
H1000
H1001
H1002
H1003
H1004
H1005
S9150

The following codes were **assigned to** Edit 28 “Not Recognized by Medicare”, **effective 07/01/02**

HCPCS
S9484
S9490
S9900

The following codes were **assigned to** Edit 28 “Not Recognized by Medicare”, **effective 10/01/02**

HCPCS
S0104
S0201
S0207
S0315
S0316
S0320
S1040
S2262
S2265
S2266
S2267
S3655

The following codes were **assigned to** Edit 28 “Not Recognized by Medicare”, **effective 01/01/03**

HCPCS
S5100
S5101
S5102
S5105
S5110
S5111
S5115
S5116
S5120
S5121
S5125
S5126
S5130
S5131
S5135
S5136
S5140
S5141
S5145
S5146
S5150
S5151
S5160

HCPCS
S5161
S5162
S5165
S5170
S5175
S5180
S5181
S5185
S5190
S5199
S8004

The following codes were **assigned to** Edit 28 “Not Recognized by Medicare”, **effective 04/01/03**

HCPCS
H2010
H2011
H2012
H2013
H2014
H2015
H2016
H2017
H2018
H2019
H2020
H2021
H2022
H2023
H2024
H2025
H2026
H2027
H2028
H2029
H2030
H2031
H2032
H2033
H2034
H2035
H2036
H2037
S0136
S0137
S0138
S0139
S0140
S0141
S2090

HCPCS
S2091
S3000
S3820
S3822
S3823
S3828
S3829
S3833
S3834
S5108
S5109
S8460
S8990
S9434
T2010
T2011

The following codes were **assigned to** Edit 28 “Not Recognized by Medicare”, **effective 07/01/03**

HCPCS
S0317
S3625
S3840
S3841
S3842
S3843
S3844
S3845
S3846
S3847
S3848
S3849
S3850
S3851
S3852
S9335

The following codes were **assigned to** Edit 28 “Not Recognized by Medicare”, **effective 10/01/03**

HCPCS
S2070
S2213
S2230
S2235
S5550
S5551
S5552
S5553
S5560
S5561
S5565

HCPCS
S5566
S5570
S5571
S8120
S8121
S9476
T2012
T2013
T2014
T2015
T2016
T2017
T2018
T2019
T2020
T2021
T2022
T2023
T2024
T2025
T2026
T2027
T2028
T2029
T2030
T2031
T2032
T2033
T2034
T2035
T2036
T2037
T2038
T2039
T2040
T2041
T2042
T2043
T2044
T2045
T2046
T2048

The following codes were **assigned to** Edit 28 “Not Recognized by Medicare”, **effective 01/01/04**

HCPCS
90918
90919
90920
90921
90922

HCPCS
90923
90924
90925
0001F
0002F
0003F
0004F
0005F
0006F
0007F
0008F
0009F
0010F
0011F
99601
99602
E0118
E0190
E0240
E0247
E0248
L3031
Q0085
S0107
S0115
S2085
S2095
S2113
S2135
S2225
S2362
S2363
S3853
S8075
S8948
T2101
T5001
T5999
V2756

The following code was **removed from** Edit 28 “Not Recognized by Medicare”, **effective 01/01/01**

HCPCS
E0602

The following code was **removed from** Edit 28 “Not Recognized by Medicare”, **effective 07/01/01**

HCPCS
A4570

The following code was **removed from** Edit 28 “Not Recognized by Medicare”, **effective 01/01/03**

HCPCS
A4580

The following code was **removed from** Edit 28 “Not Recognized by Medicare”, **effective 01/01/04**

HCPCS
A4590

The following code was **removed from** Edit 28 “Not Recognized by Medicare”, **effective 04/01/02**

HCPCS
E0765

The following codes were **removed from** Edit 28 “Not Recognized by Medicare”, **effective 04/01/03**

HCPCS
A4232
A4632
S8945
S9524
T1008
T1011

The following codes were **removed from** Edit 28 “Not Recognized by Medicare”, **effective 07/01/03**

HCPCS
S9802
S9803

The following code was **removed from** Edit 28 “Not Recognized by Medicare”, **effective 10/01/03**

HCPCS
S9546

The following codes were **removed from** Edit 28 “Not Recognized by Medicare”, **effective 01/01/04**

HCPCS
27096
33240
33249
71555
72198
73725

HCPCS
74185
90748
90780
90781
92510
96400
96405
96406
96408
96410
96412
96414
96420
96422
96423
96425
96440
96445
96450
96542
96545
96549
99183
A0380
A0390
A9700
G0167
J0270
J0275
J1470
J1480
J1490
J1500
J1510
J1520
J1530
J1540
J1550
J1560
J7199
J7508
J7599
J8999
J9062
J9080
J9090
J9091
J9092
J9094
J9095
J9096

HCPCS
J9097
J9110
J9140
J9180
J9182
J9260
J9290
J9291
J9375
J9380
J9999
K0415
K0416
P9011
Q0165
Q0168
Q0170
Q0172
Q0176
Q0178

The following codes were **assigned to** Edit 50 “Non-covered based on statutory exclusion”, **effective 01/01/04**

HCPCS
A9280
J7303
V5362
V5363
V5364

The following code was **assigned to** Edit 55 “Non-reportable for site of service”, **effective 10/01/03**

HCPCS
C9207

The following codes were **assigned to** Edit 55 “Non-reportable for site of service”, **effective 01/01/04**

HCPCS
C1080
C1081
C1082
C1083
C1713
C1714
C1715

HCPCS	
C1717	
C1721	
C1722	
C1724	
C1725	
C1726	
C1727	
C1728	
C1729	
C1730	
C1731	
C1732	
C1733	
C1750	
C1751	
C1752	
C1753	
C1754	
C1755	
C1756	
C1757	
C1758	
C1759	
C1760	
C1762	
C1763	
C1764	
C1766	
C1767	
C1768	
C1769	
C1770	
C1771	
C1772	
C1773	
C1776	
C1777	
C1778	
C1779	
C1780	
C1781	
C1782	
C1784	
C1785	

HCPCS	
C1786	
C1787	
C1788	
C1789	
C1813	
C1815	
C1816	
C1817	
C1874	
C1875	
C1876	
C1877	
C1878	
C1879	
C1880	
C1881	
C1882	
C1883	
C1885	
C1887	
C1891	
C1892	
C1893	
C1894	
C1895	
C1896	
C1897	
C1898	
C1899	
C2615	
C2617	
C2619	
C2620	
C2621	
C2622	
C2625	
C2626	
C2627	
C2628	
C2629	
C2630	
C2631	
C9210	
C9211	

HCPCS
C9212

The following codes were **removed from** Edit 55 “Non-reportable for site of service”, **effective 01/01/04**

HCPCS
C9111
C9116
C9120
C9204

The following codes were **assigned to** Edit 61 “Service can only be billed to the DMERC”, **effective 08/01/00**

HCPCS
A4221
A4222
A4230
A4231
A4232
A4253
A4254
A4255
A4256
A4258
A4259
A4265
A4556
A4557
A4558
A4595
A4611
A4612
A4613
A4615
A4616
A4617
A4618
A4619
A4620
A4621
A4624
A4628
A4630
A4631
A4635
A4636
A4637
A4640
A7000
A7001
A7002

HCPCS
A7003
A7004
A7005
A7006
A7007
A7008
A7009
A7010
A7011
A7012
A7013
A7014
A7015
A7016
A7017
E0100
E0105
E0110
E0111
E0112
E0113
E0114
E0116
E0130
E0135
E0141
E0142
E0143
E0144
E0145
E0146
E0147
E0153
E0154
E0155
E0156
E0157
E0158
E0159
E0160
E0161
E0162
E0163
E0164
E0165
E0166
E0167
E0175
E0176
E0177
E0178

HCPCS
E0179
E0180
E0181
E0182
E0184
E0185
E0186
E0187
E0188
E0189
E0191
E0192
E0193
E0194
E0196
E0197
E0198
E0199
E0200
E0202
E0205
E0210
E0215
E0217
E0218
E0220
E0225
E0230
E0235
E0236
E0238
E0239
E0249
E0250
E0251
E0255
E0256
E0260
E0261
E0265
E0266
E0271
E0272
E0275
E0276
E0277
E0280
E0290
E0291
E0292
E0293

HCPCS
E0294
E0295
E0296
E0297
E0305
E0310
E0325
E0326
E0371
E0372
E0373
E0424
E0431
E0434
E0439
E0441
E0442
E0443
E0444
E0450
E0455
E0457
E0459
E0460
E0462
E0480
E0500
E0550
E0555
E0560
E0565
E0570
E0575
E0580
E0585
E0590
E0600
E0601
E0602
E0605
E0606
E0607
E0608
E0609
E0610
E0615
E0621
E0627
E0628

HCPCS
E0629
E0630
E0635
E0650
E0651
E0652
E0655
E0660
E0665
E0666
E0667
E0668
E0669
E0671
E0672
E0673
E0690
E0720
E0730
E0731
E0740
E0744
E0745
E0747
E0748
E0760
E0776
E0779
E0780
E0781
E0784
E0791
E0840
E0850
E0855
E0860
E0870
E0880
E0890
E0900
E0910
E0920
E0930
E0935
E0940
E0941
E0942
E0943

HCPCS
E0944
E0945
E0946
E0947
E0948
E0962
E0963
E0964
E0965
E0967
E0968
E0969
E0977
E0980
E0994
E0997
E0998
E0999
E1001
E1031
E1065
E1210
E1211
E1225
E1227
E1228
E1230
E1296
E1297
E1298
E1310
E1340
E1353
E1355
E1372
E1375
E1377
E1378
E1379
E1380
E1381
E1382
E1383
E1384
E1385
E1390
E1405
E1406
E1700
E1701
E1702

HCPCS
E1800
E1805
E1810
E1815
E1820
E1825
E1830
J2545
J7608
J7618
J7619
J7628
J7629
J7631
J7635
J7636
J7637
J7638
J7639
J7642
J7643
J7644
J7648
J7649
J7658
J7659
J7668
J7669
J7680
J7681
J7682
J7683
J7684
J7699
J7799
K0001
K0002
K0003
K0004
K0005
K0006
K0007
K0009
K0010
K0011
K0012
K0014
K0015
K0016
K0017
K0018

HCPCS
K0019
K0020
K0021
K0022
K0023
K0024
K0025
K0026
K0027
K0028
K0029
K0030
K0031
K0032
K0033
K0034
K0035
K0036
K0037
K0038
K0039
K0040
K0041
K0042
K0043
K0044
K0045
K0046
K0047
K0048
K0049
K0050
K0051
K0052
K0053
K0054
K0055
K0056
K0057
K0058
K0059
K0060
K0061
K0062
K0063
K0064
K0065
K0066
K0067
K0068
K0069

HCPCS
K0070
K0071
K0072
K0073
K0074
K0075
K0076
K0077
K0078
K0079
K0080
K0081
K0082
K0083
K0084
K0085
K0086
K0087
K0088
K0089
K0090
K0091
K0092
K0093
K0094
K0095
K0096
K0097
K0098
K0099
K0100
K0101
K0102
K0103
K0104
K0105
K0106
K0107
K0108
K0114
K0115
K0116
K0182
K0183
K0184
K0185
K0186
K0187
K0188
K0189
K0195

HCPCS
K0268
K0269
K0270
K0283
K0452
K0455
K0456
K0457
K0458
K0459
K0460
K0461
K0462
K0501
K0529
K0531
K0532
K0533
K0534
L3964
L3965
L3966
L3968
L3969
L3970
L3972
L3974

The following codes were **assigned to** Edit 61 “Service can only be billed to the DMERC”, **effective 01/01/01**

HCPCS
A4608
A7018
A7019
A7020
E0148
E0149
E0168
E0571
E0572
E0574
E0617
E0765
E1035
K0538
K0539
K0540
K0541
K0542
K0543
K0544

HCPCS
K0545
K0546
K0547

The following codes were **assigned to** Edit 61 “Service can only be billed to the DMERC”, **effective 04/01/01**

HCPCS
K0549
K0550

The following code was **assigned to** Edit 61 “Service can only be billed to the DMERC”, **effective 07/01/01**

HCPCS
K0551

The following codes were **assigned to** Edit 61 “Service can only be billed to the DMERC”, **effective 04/01/02**

HCPCS
A4257
E0169
E0221
E0316
E0482
E0620
E1801
E1806
E1811
E1816
E1818
E1821
E1840
E2000
E2100
E2101

The following codes were **assigned to** Edit 61 “Service can only be billed to the DMERC”, **effective 01/01/03**

HCPCS
A4609
A4610
A4632
A4633
A4639
A7025
A7026
A7030
A7031
A7032
A7033
A7034
A7035
A7036

HCPCS
A7037
A7038
A7039
A7044
E0117
E0454
E0461
E0483
E0484
E0636
E0691
E0692
E0693
E0694
E0701
E1011
E1012
E1013
E1014
E1015
E1016
E1017
E1018
E1020
E1025
E1026
E1027
E1037
E1038
E1231
E1232
E1233
E1234
E1235
E1236
E1237
E1238
E1802

The following codes were **assigned to** Edit 61 “Service can only be billed to the DMERC”, **effective 01/01/04**

HCPCS
A4638
A6550
A6551
A7046
A9999
E0140
E0300
E0301

HCPCS
E0302
E0303
E0304
E0470
E0471
E0472
E0561
E0562
E0637
E0638
E0675
E0955
E0956
E0957
E0960
E0981
E0982
E0983
E0984
E0985
E0986
E1002
E1003
E1004
E1005
E1006
E1007
E1008
E1009
E1010
E1019
E1021
E1028
E1029
E1030
E1391
E2120
E2201
E2202
E2203
E2204
E2300
E2301
E2310
E2311
E2320

HCPCS
E2321
E2322
E2323
E2324
E2325
E2326
E2327
E2328
E2329
E2330
E2331
E2340
E2341
E2342
E2343
E2350
E2351
E2360
E2361
E2362
E2363
E2364
E2365
E2366
E2367
E2399
E2402
E2500
E2502
E2504
E2506
E2508
E2510
E2511
E2512
E2599
J7621
K0552
K0600
K0601
K0602
K0603
K0604
K0605
K0606
K0607

HCPCS
K0608
K0609
K0610
K0611
K0612
K0613
K0614
K0615
K0616
K0617

The following codes were **assigned to** Edit 62 “Not Recognized By OPPS” **effective 01/01/04**

HCPCS
0054T
0055T
0056T
0057T
0060T
0061T
27096
71555
73725
74185
90780
90781
96400
96405
96406
96408
96410
96412
96414
96420
96422
96423
96425
96440
96445
96450
96542
96545
96549
99002
99140
99183
A4671
A4672

HCPCS
A4673
A4674
A4728
A9522
A9523
A9533
A9534
A9700
E1634
G0167
J0215
J0270
J0275
J1470
J1480
J1490
J1500
J1510
J1520
J1530
J1540
J1550
J1560
J7199
J7330
J7508
J8999
J9062
J9080
J9090
J9091
J9092
J9094
J9095
J9096
J9097
J9110
J9140
J9180
J9182
J9260
J9263
J9290
J9291
J9375
J9380

HCPCS
K0415
K0416
L3350
Q0165
Q0168
Q0170
Q0172
Q0176
Q0178
Q0182
V2761

HCPCS - DESCRIPTION CHANGES

The following code descriptions were changed, effective 01/01/04

HCPCS	Old Description	New Description
0002T	Endovas repr abdo ao aneurys	Endo repair abd aa aorto uni
11100	Biopsy of skin lesion	Biopsy, skin lesion
15852	Dressing change,not for burn	Dressing change not for burn
16036	Incise burn scab, addl incis	Escharotomy; add'l incision
20551	Inject tendon origin/insert	Inj tendon origin/insertion
20552	Inject trigger point, 1 or 2	Inj trigger point, 1/2 muscl
22522	Percut vertebroplasty addl	Percut vertebroplasty add'l
25025	Decompress forarm 2 spaces	Decompress forearm 2 spaces
34826	Endovasc exten prosth, addl	Endovasc exten prosth, add'l
37785	Revise secondary varicosity	Ligate/divide/excise vein
44388	Colon endoscopy	Colonoscopy
44799	Intestine surgery procedure	Unlisted procedure intestine
45335	Sigmoidoscope w/submuc inj	Sigmoidoscopy w/submuc inj
45338	Sigmoidoscopy w/tumr remove	Sigmoidoscopy w/tumr remove
45381	Colonoscope, submucous inj	Colonoscopy, submucous inj
45386	Colonoscope dilate stricture	Colonoscopy dilate stricture
50548	Laparo remove k/ureter	Laparo remove w/ ureter
55870	Vag hyst w/enterocele repair	Electroejaculation
63043	Laminotomy, addl cervical	Laminotomy, add'l cervical
63044	Laminotomy, addl lumbar	Laminotomy, add'l lumbar
64821	Remove sympathestic nerves	Remove sympathetic nerves
70470	Ct head/brain w/o&w dye	Ct head/brain w/o & w/ dye
70488	Ct maxillofacial w/o&w dye	Ct maxillofacial w/o & w dye
70543	Mri orbt/fac/nck w/o&w dye	Mri orbt/fac/nck w/o & w dye
70552	Mri brain w/dye	Mri brain w/ dye
70553	Mri brain w/o&w dye	Mri brain w/o & w/ dye
71270	Ct thorax w/o&w dye	Ct thorax w/o & w/ dye

71552	Mri chest w/o&w/dye	Mri chest w/o & w/dye
72127	Ct neck spine w/o&w/dye	Ct neck spine w/o & w/dye
72130	Ct chest spine w/o&w/dye	Ct chest spine w/o & w/dye
72133	Ct lumbar spine w/o&w/dye	Ct lumbar spine w/o & w/dye
72156	Mri neck spine w/o&w/dye	Mri neck spine w/o & w/dye
72157	Mri chest spine w/o&w/dye	Mri chest spine w/o & w/dye
72158	Mri lumbar spine w/o&w/dye	Mri lumbar spine w/o & w/dye
72194	Ct pelvis w/o&w/dye	Ct pelvis w/o & w/dye
72198	Mr angio pelvis w/o&w/dye	Mr angio pelvis w/o & w/dye
72270	Contrast x-ray of spine	Contrast x-ray, spine
74170	Ct abdomen w/o&w/dye	Ct abdomen w/o & w/dye
74175	Ct angio abdom w/o&w/dye	Ct angio abdom w/o & w/dye
74183	Mri abdomen w/o&w/dye	Mri abdomen w/o & w/dye
74185	Mri angio, abdom w or w/o dy	Mri angio, abdom w or w/o dye
76355	CAT scan for localization	Ct scan for localization
76360	CAT scan for needle biopsy	Ct scan for needle biopsy
76362	Cat scan for tissue ablation	Ct guide for tissue ablation
76370	CAT scan for therapy guide	Ct scan for therapy guide
76775	Us eam abdo back wall, lim	Us exam abdo back wall, lim
76802	Ob us < 14 wks, addl fetus	Ob us < 14 wks, add'l fetus
76872	Echo exam, transrectal	Us, transrectal
78601	Brain imaging, ltd w/ flow	Brain imaging, ltd w/flow
84155	Assay of protein	Assay of protein, serum
84160	Assay of serum protein	Assay of protein, any source
84165	Assay of serum proteins	Electrophoresis of proteins
84378	Sugars single quant	Sugars, single, quant
86294	Immunoassay, tumor qual	Immunoassay, tumor, qual
86300	Immunoassay, tumor ca 15-3	Immunoassay, tumor, ca 15-3
86301	Immunoassay, tumor ca 19-9	Immunoassay, tumor, ca 19-9
87075	Culture bacteria anaerobic	Cultr bacteria, except blood
87272	Cryptosporidium/gardia ag, if	Cryptosporidium ag, if
87328	Cryptospor ag, eia	Cryptosporidium ag, eia
88332	Path consult intraop, addl	Path consult intraop, add'l
88342	Immunocytochemistry	Immunohistochemistry
89055	Leukocyte count, fecal	Leukocyte assessment, fecal
89250	Fertilization of oocyte	Cultr oocyte/embryo <4 days
89251	Culture oocyte w/embryos	Cultr oocyte/embryo <4 days
89258	Cryopreservation, embryo	Cryopreservation; embryo(s)
93736	Telephone analy, pacemaker	Telephonic analy, pacemaker
95967	Meg, evoked, each addl	Meg, evoked, each add'l
99292	Critical care, addl 30 min	Critical care, add'l 30 min
99512	Home visit, hemodialysis	Home visit for hemodialysis
A4538	Diaper sv ea reusable diaper	Reusable diaper from dpr svc
A9517	I-131 sodium iodide capsule	Th I131 so iodide cap millic
C1819	Unassigned #355	Tissue localization-excision dev
C1884	Embolization protect sys	Embolization Protect syst

C2616	Brachytx source Yttrium-90	Brachytx source, Yttrium-90
C2633	Unassigned #38	Brachytx source, Cesium-131
C9123	TransCyte, per 247 sq cm	Transcyte, per 247 sq cm
C9704	Unassigned #358	Inj inert subs upper GI
E0141	Rigid walker wheeled wo seat	Rigid wheeled walker adj/fix
E0952	Loop tie	Toe loop/holder, each
E0973	Wheelchair adjustabl height	W/Ch access det adj armrest
E0974	Wheelchair grade-aid	W/Ch access anti-rollback
E0978	Wheelchair belt w/airplane b	W/C acc,saf belt pelv strap
E1226	Wheelchair spec sz full-recl	W/C access fully reclineback
G0210	PET img whlebody dxlung ca	PET img wholebody dxlung
G0213	PET img wholbody dx colorec	PET img wholbody dx
G0214	PET img wholebod init colore	PET img wholebod init
G0215	PET img wholebod restag colre	PETimg wholebod restag
G0230	PET myocard viability post s	PET myocard viability post
G0246	Followup eval of foot PT LOP	Followup eval of foot pt lop
G0247	Routine footcare PT w LOPS	Routine footcare pt w lops
G0248	Demonstrate use home INR mon	Demonstrate use home inr mon
G0252	PET Imaging Initial dx	PET imaging initial dx
G0253	PET Image Brst Decton Recur	PET image brst dection recur
G0257	Unsched dialysis esrd pt hos	Unsched dialysis ESRD pt hos
G0268	Removal of impacted wax MD	Removal of impacted wax md
G0296	PET image restag thyroid ca	PET imge restag thyrod cance
G0297	Insert single chamber ICD	Insert single chamber/cd
G0298	Insert dual chamber ICD	Insert dual chamber/cd
G0299	Inser/repos single ICD +lead	Inser/repos single icd+leads
G0300	Insert/reposit lead dual+gen	Insert reposit lead dual+gen
G3001	Admin+supply tositumomab	Admin + supply, tositumomab
J1563	Immune globulin, 1 g	IV immune globulin
J2260	Inj, milrinone lactate, 5 mg	Inj milrinone lactate / 5 MG
J2324	Nesiritide, per 0.5 mg vial	Nesiritide
J3487	Inj, zoledronic acid, per 1 mg	Zoledronic acid
J8700	Temozolmide	Temozolomide
J9130	Dacarbazine 10 MG inj	Dacarbazine 100 mg inj
K0560	mcp joint 2-piece for implant	MCP joint 2-piece for implnt
K0600	functional neuromuscularstim	Functional neuromuscularstim
K0601	repl batt silver oxide 1.5 v	Repl batt silver oxide 1.5 v
K0602	repl batt silver oxide 3 v	Repl batt silver oxide 3 v
K0603	repl batt alkaline 1.5 v	Repl batt alkaline 1.5 v
K0604	repl batt lithium 3.6 v	Repl batt lithium 3.6 v
K0605	repl batt lithium 4.5 v	Repl batt lithium 4.5 v
K0607	Repl batt for AED device	Repl batt for AED
K0614	Chem/antiseptic solution, 8oz	Chem/antisept solution, 8oz
K0615	SGD prerec mes>8min<=20 min	SGD prerec mes >8min <=20min
K0616	SGD prerec mes>20min<=40min	SGD prerec mes>20min <=40min
K0617	SGD prerec mes >40min	SGD prerec mes > 40min

L0452	TLSO flex custom fab thoraci	tlso flex custom fab thoraci
L4350	Pneumatic ankle cntrl splint	Ankle control orthosi prefab
L4360	Pneumatic walking splint	Pneumati walking boot prefab
L4386	Non-pneumatic walking splint	Non-pneum walk boot prefab
L5646	Below knee air cushion socke	Below knee cushion socket
L5648	Above knee air cushion socke	Above knee cushion socket
L6620	Flexion-friction wrist unit	Flexion/extension wrist unit
L7900	Vacuum erection system	Male vacuum erection system
L8658	Interphalangeal joint implnt	Interphalangeal joint spacer
P9017	One donor fresh frozn plasma	Plasma 1 donor frz w/in 8 hr
Q3031	Collagen skin test kit	Collagen skin test
Q4078	Ammonia N-13,per dose	Ammonia N-13, per dose
S0114	Treprostinil sodium inject	Inj treprostinil 0.5 mg
S0122	Inj menotropins 75 IU	Inj menotropins 75 iu
S0124	Inj urofollitropin 75 IU	Inj urofollitropin 75 iu
S0126	Inj follitropin alfa 75 IU	Inj follitropin alfa 75 iu
S0128	Inj follitropin beta 75 IU	Inj follitropin beta 75 iu
S0130	Inj c gonadotropin 5000 IU	Inj c gonadotropin 5000 iu
S0195	Pneumococcal conjugate vac	Pneumo vaccine 5-9 yrs
S2130	ERA of reflux saphenous vein	Endo RF ablation saph vein
S9123	Nursing care, in the home; b	Nursing care in home RN
S9562	Palivizumab home inj perdiem	HT inj palivizumab diem
S9590	In home irrigation therapy	HT irrigation diem
T2001	N-ET; patient attend/escort	N-et; patient attend/escort
T2002	N-ET; per diem	N-et; per diem
T2005	N-ET; stretcher van	N-et; stretcher van

HCPCS - UNITS OF SERVICE

The following codes were assigned to the following “Units of Service”, **effective 01/01/03**

HCPCS	Old Max Units	New Max Units
G0263	0	1
G0264	0	1
G0274	0	1

The following codes were assigned to the following “Units of Service”, **effective 10/01/03**

HCPCS	Old Max Units	New Max Units
G0297	0	1
G0298	0	1
G0299	0	1

HCPCS	Old Max Units	New Max Units
G0300	0	1

The following codes were assigned to the following “Units of Service”, **effective 01/01/04**

HCPCS	Old Max Units	New Max Units
C1080	0	1
C1081	0	1
C1082	0	1
C1083	0	1
G0338	0	1
G0339	0	1
G0340	0	5
G3001	0	1

MODIFIERS

ADDED MODIFIERS

The following modifiers **were added** to the list of valid modifiers, **effective 04/01/03**

modifier
UF
UG
UH
UJ
UK

The following modifiers **were added** to the list of valid modifiers, **effective 10/01/03**

modifier
CD
CE
CF
KZ

The following modifiers **were added** to the list of valid modifiers, **effective 01/01/04**

modifier
UN
UP
UQ
UR
US

REVENUE CODES

ADDED REVENUE CODES

The following revenue codes **were added** to the list of valid revenue codes, **effective 01/01/04**

RevenueCode	SI
1000	E
1001	E
1002	E
1003	E
1004	E
1005	E

REVENUE CODE SI CHANGES

The following revenue codes **had SI changes** , **effective 10/01/02**

RevenueCode	Old SI	New SI
681	E	N
682	E	N
683	E	N
684	E	N
689	E	N