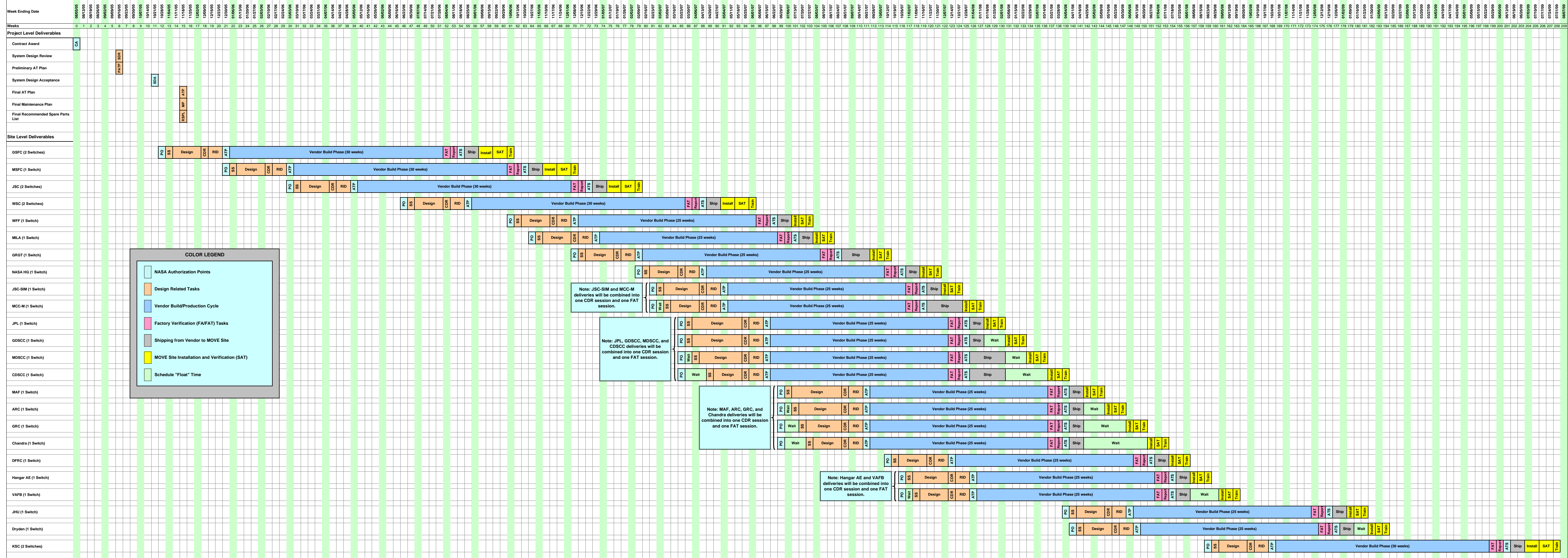


MOVE Schedule -- Summary View (04/28/04)



**COLOR LEGEND**

- NASA Authorization Points
- Design Related Tasks
- Vendor Build/Production Cycle
- Factory Verification (FA/FAT) Tasks
- Shipping from Vendor to MOVE Site
- MOVE Site Installation and Verification (SAT)
- Schedule "Float" Time

Note: JSC-SIM and MCC-M deliveries will be combined into one CDR session and one FAT session.

Note: JPL, GDSCC, MDSCC, and CDSCC deliveries will be combined into one CDR session and one FAT session.

Note: MAF, ARC, GRC, and Chandra deliveries will be combined into one CDR session and one FAT session.

Note: Hangar AE and VAFB deliveries will be combined into one CDR session and one FAT session.