

Land Processes Distributed Active Archive Center



Home About Products Order Data News Help/FAQ/Edu Links Contact Us

EDG Data Set Name

MODIS/Aqua Observation Pointers Daily L2G Global 1km SIN Grid Day

Granule Shortname

MYDPT1KD

Version	Acquisition Range	Science Quality Status
V003	March 6 2003 (2003065)	Validated

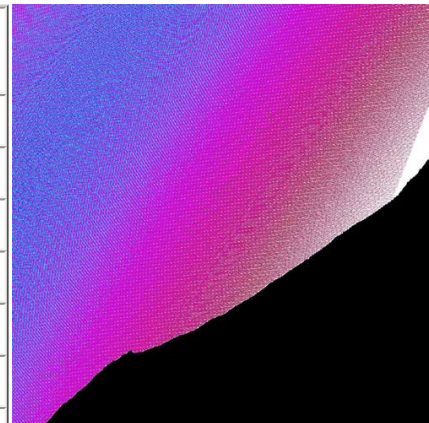
Data Set Characteristics

Area = ~ 10° x 10° lat/long
 Image Dimensions = 2 (1200x1200 row/column)
 Average File Size = ~ 12 MB
 Resolution = 1 kilometer
 Projection = Sinusoidal
 Processing Level = 2G
 Data Format = HDF-EOS
 Science Data Sets (SDSs) = 5

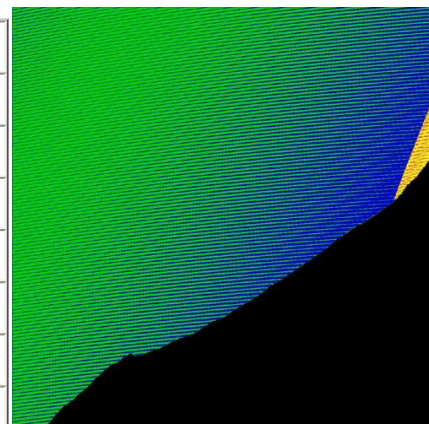
Product Description

The MODIS Level 2 Gridded (L2G) land data storage methodology was developed to satisfy the diverse needs of the MODIS land product generation algorithms, to enable efficient processing and reprocessing of MODIS land products, to facilitate the development of terrestrial remote sensing algorithms and science using MODIS land data, and to provide users with the original sensed MODIS observations and their sub-pixel geolocation information.

Color	Observation Coverage
White	0 to 10%
Maroon	11 to 20%
Magenta	21 to 30%
Purple	31 to 40%
Cyan	41 to 50%
Blue	51 to 60%
Green	61 to 70%
Yellow	71 to 80%
Orange	81 to 90%
Red	91 to 100%
Black	Fill



Color	Number of Observations
Black	0
Green	1
Blue	2
Red	3
Yellow	4
Magenta	5
Maroon	6



The L2G data structure stores information concerning the Level 2 (L2) observations that fall within each Level 3 (L3) grid cell over a 24 hour (GMT) period. The measured L2 geophysical parameter and the sensing geometry information are stored for each observation. The observation coverage, the area of the intersection of the observation and each overlapping grid cell in the tile, is computed and stored in the MYDPT1KD product. The original 1-km L2 product line and sample numbers of each observation are also stored. The images displayed represent day-mode L2G information acquired over the western coast of North America on July 11, 2003. The first image is of the observation coverage and the second contains the number of observations per pixel. The observations stored in the L2G products are examined by the L3 processes to help extract the most relevant observations falling over each grid cell.

NOTE: These products are validated, meaning that product uncertainties are well defined over a range of representative conditions. Although there may be later improved versions, these data are ready for use in scientific publications.

SDS	Units	Data Type -bit	Fill Value	Valid Range	Multiply by Scaling Factor	Calibrated _nt
Number of Observations	na	8-bit signed integer	255	0 - 127	na	na
Observation coverage	%	8-bit signed integer	255	0 - 100	0.01	5
Granule pointer	na	8-bit unsigned integer	255	0 - 254	na	na
Observation line number	na	16-bit unsigned integer	65535	0 - 65534	na	na
Observation sample number	na	16-bit unsigned integer	65535	0 - 65534	na	na

NEW Print or save this information in .pdf format

[View .pdf version](#) 

Order Data through the EOS Data Gateway

(<http://edcimswww.cr.usgs.gov/pub/imswelcome/>)

EOS Data Gateway Search Tips

Data Center: EDC-ECS
Sensor: MODIS
Dataset: MODIS/Aqua Observation Pointers Daily L2G Global 1km SIN Grid Day
Spatial: HORIZONTALTILENUMBER Max/Min VERTICALTILENUMBER Max/Min
Geographic Extent: Type Lat/Long Range or Draw on Map
Temporal Extent: 2003-03-06 to present

Product Information

Product Description - Not Available

User Guide - Not Available

[Algorithm Theoretical Basis Document \(ATBD\)](#)

(http://eospsso.gsfc.nasa.gov/eos_homepage/for_scientists/atbd/viewInstrument.php?instrument=MODIS)

[EOS Data Products Handbook Volume 2 \(2000\)](#)

(http://eospsso.gsfc.nasa.gov/eos_homepage/for_scientists/data_products/vol2.php)

Contact Information

[LP DAAC User Services](#)

U.S. Geological Survey
EROS Data Center
47914 252nd Street
Sioux Falls, SD 57198-0001

Phone: 605-594-6116

Toll Free: 866-573-3222

866-LPE-DAAC

Fax: 605-594-6963
Email: edc@eos.nasa.gov
Web: <http://LPDAAC.usgs.gov>

LP DAAC	EDC Home	About	Products	Order Data	News	Help/FAQ/Edu	Links	Contact Us
-------------------------	--------------------------	-----------------------	--------------------------	----------------------------	----------------------	------------------------------	-----------------------	----------------------------

This site is hosted by the [USGS](#) - [NASA](#) Distributed Active Archive Center

[Disclaimers, Statements and Accessibility](#)

URL: <http://LPDAAC.usgs.gov/modis/mydpt1kdv3.html>

Technical Contact: edc@eos.nasa.gov

Last Update: Wednesday, 06-Aug-2003 14:39:58 CDT

[Download Adobe Acrobat Reader](#)

