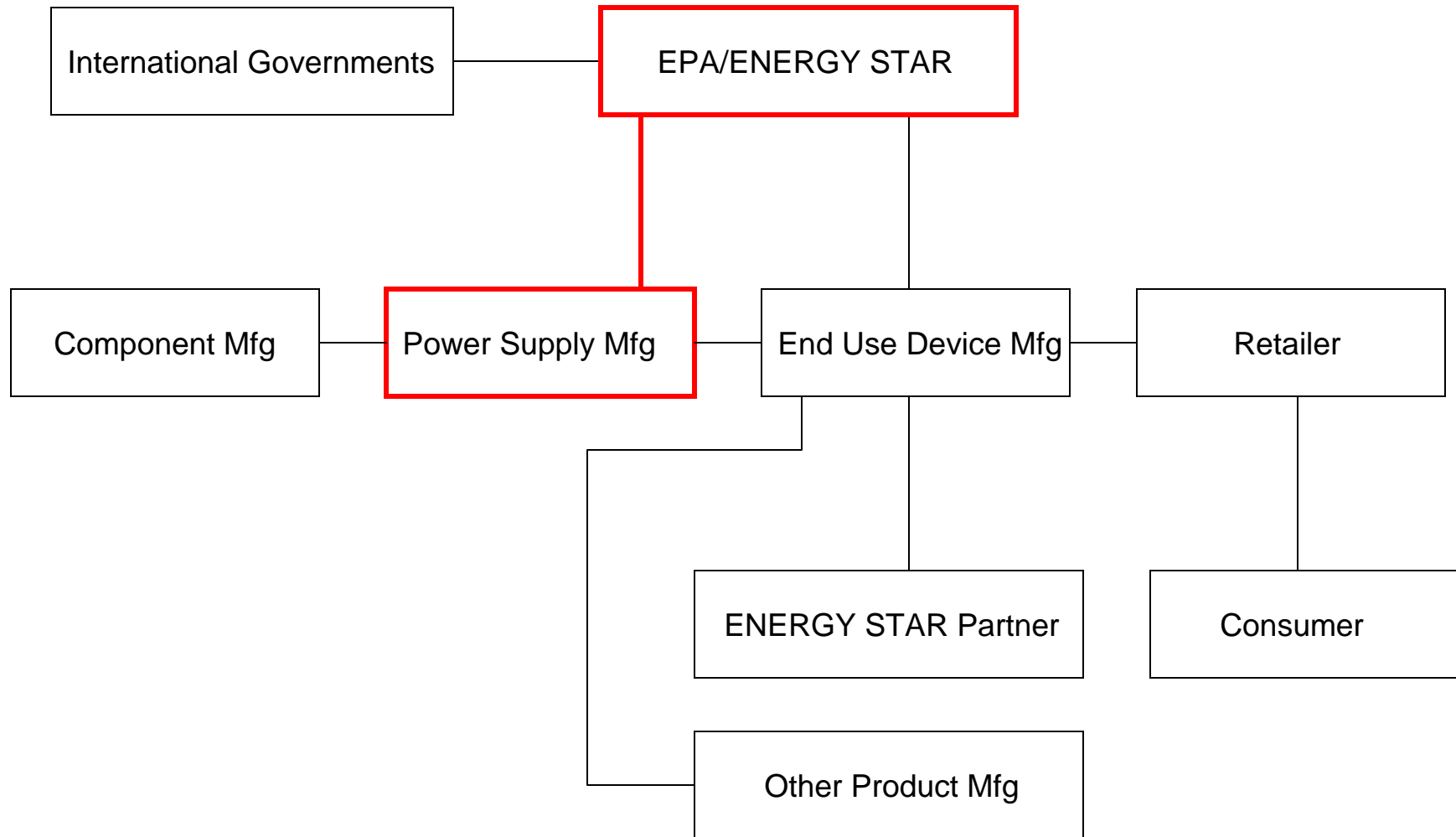




# ENERGY STAR Partnership Agreement and Partner Commitments:

## Rules for the ENERGY STAR Club

# Partnership with Power Supply Manufacturers



# ENERGY STAR Partnership Agreement (PA)



## **Three Standard Commitments:**

- Annual submission of available product models
- Annual submission of ENERGY STAR unit shipment or market penetration data (not sales)
- Use of the ENERGY STAR mark and compliance with ENERGY STAR Identity Guidelines
  - Guidance on how the ENERGY STAR name and logos can be used

# Commitment #1: Annual Submission of Data



**Goal:** to ensure qualified product information provided on the Web site is current

- Each year partners must provide EPA with a list of models sold and discontinued
  - Qualifying products do not need to be retested if the specification has not changed
  - Discontinued models will be deleted from the ENERGY STAR Web site list of qualifying products

# Commitment #2: Annual Shipment Data



**Goal:** to determine market penetration of ENERGY STAR

- EPA will work with partners to determine data collection format
- Data can be masked and/or aggregated
- Data may be provided by trade association on behalf of its members

**Key determinant of needed specification revisions!**

# Commitment #3: Use of The ENERGY STAR Mark



- **Goal:** To make it easy for consumers and purchasers to identify energy-efficient products in the marketplace.
- All ENERGY STAR partners are required to use the ENERGY STAR mark in some form
  - Slightly different requirements depending on product
- The ENERGY STAR Identity Guidelines give explicit direction as to how the ENERGY STAR name and logos can be used

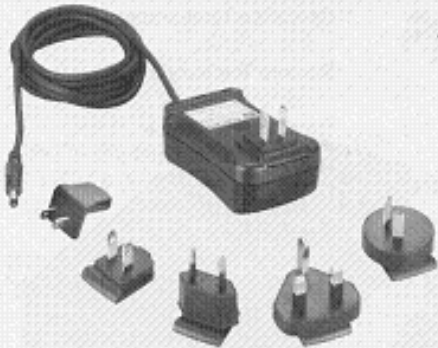
# Benefits of Using the Label



- **Valuable selling tool** for power supply manufacturers to highlight most efficient models
- EPA developing a **marketing plan** to highlight the benefits of these more efficient power supplies to consumers

**30 Watt Interchangeable Plug Series  
PSA30R Adapter with Worldwide Wall Plugs**

**PRELIMINARY**



- Double Insulated
- Class B EMI
- Field Changeable Plugs
- Power On LED

**Applications**

- Peripherals
- Portable Equipment
- Gaming Machines
- Point of Sale Equipment
- Network Equipment

**Safety Approvals**

- cUL 60950 3rd edition
- CE
- TUV EN60950
- AS/NZS 3260 & 4417

**Output Specifications**

Model	DC Output Voltage	Load		Ripple (1) P-P (max)	Regulation	
		Min.	Max.		Line	Load(2)
(3) PSA30R-033	3.3V	0A	4A	50mV	±1%	±5%
(3) PSA30R-050	5V	0A	4A	50mV	±1%	±5%
(3) PSA30R-090	9V	0A	2.23A	90mV	±1%	±5%
PSA30R-120	12V	0A	2.5A	120mV	±1%	±5%
(3) PSA30R-150	15V	0A	2A	150mV	±1%	±5%
(3) PSA30R-180	18V	0A	1.67A	180mV	±1%	±5%
PSA30R-240	24V	0A	1.25A	240mV	±1%	±5%
PSA30R-480	48V	0A	0.625A	480mV	±1%	±5%

**Clips ordered separately.** US Plug: RPA; UK Plug: RPK; Europe Plug: RPE; Australia Plug: RPS; All 4 Plugs: RPKL.  
 (1) Measured by using a 12 inch twisted pair terminated with a 10µF capacitor and a 0.1µF ceramic in parallel.  
 (2) No load to full load, 1.8 meter (6ft.) DC cord, measured at the plug.  
 (3) Consult factory for availability.

Collateral Example (Spec Sheet):

ENERGY STAR Certification Mark

- ENERGY STAR Blue preferred

Partner Name and Logo





**15W World Wide - Two Wire Universal Input  
PSA15W Low Profile Adapter Series**



**Features**

- Two Wire Operation
- Zero Minimum Loads
- Slim 1" Height
- <math><250\mu\text{A}</math> Leakage
- ISO 9001 Quality System
- Extended Design Life

**Applications**

- Networking
- Notebooks
- Peripherals and Terminals
- Portable Instruments

**Safety Approvals**

- cUL1950 [E127643]
- CSA 22.2 234
- CE
- TUV EN60950
- T-mark ( $\leq 15\text{V}$ ) (2)

**Output Specifications**

Model	DC Output Voltage	Load		Ripple (1) P-P	Regulation	
		Min.	Max.		Line	Load
PSA15W-050 (P)*	5V	0A	2.5A	50mV	+2%	+5%
PSA15W-090 (P)*	9V	0A	1.5A	90mV	+1%	+5%
PSA15W-120 (P)*	12V	0A	1.25A	120mV	+1%	+5%
PSA15W-150 (P)*	15V	0A	1.0A	150mV	+1%	+5%
PSA15W-240 (P)*	24V	0A	0.625A	240mV	+1%	+5%

\*Indicates center positive DC output.  
 (1) Measured at full load by using a 12 inch twisted pair terminated with a 10mfd capacitor and a 8.1 ohm resistor in parallel.  
 (2) To receive product with T-mark logo, please specify on purchase order. Special handling required during manufacturing.

**Collateral  
Example (Spec  
Sheet):**

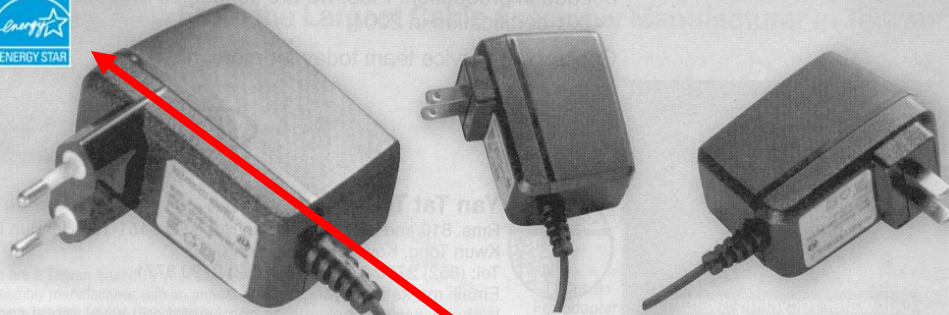
ENERGY STAR  
Certification Mark

- Black or reversed out to white may be substituted

Partner  
Name  
and  
Logo



# Serving Buyers in Europe, the US, and Asia Since 1981



- Universal input: 100-240V VAC 50Hz/60Hz
- Output power: 5W
- O/P: 5.5V, 6V, 7.5V, 8V, 9V, 10V, 12V
- Size: 72.5 x 35.6 x 52mm
- Weight (approx.): 120g
- Complies with international safety standards

- Features:
- Constant voltage and current
  - Short circuit protection
  - Lightweight and compact

Switching Mode Adapters and Cellular Phone Chargers

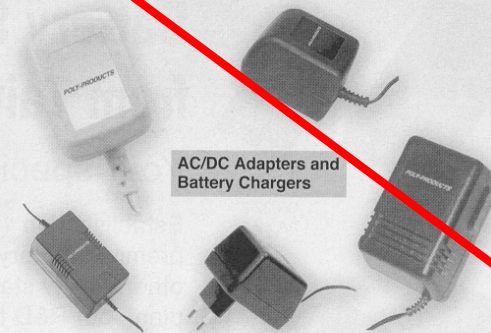


Factory Location: Shunde, China  
Factory Area: 210,000 sq. ft.

For over 22 years, we have developed, manufactured, and exported AC/DC adapters, battery chargers, power supplies, and transformers. In that time, our main markets have been the US, Europe, and Asia. OEM clients come to us for the benefits of an experienced, reputable supplier.

- SMT lines for faster, more accurate production
- Complete vertical integration for better quality control
- 3.5 million units monthly capacity for quick turnaround
- ISO 9001, BABT certification on our facilities
- Export experience in major markets, ensuring competitive service

For a supplier that has been meeting buyer demands for quality, speed, and responsiveness since 1981, contact us today.



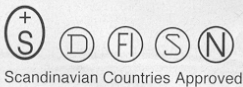
AC/DC Adapters and Battery Chargers



Assembly Line



SMT Machines



UL/CSA Approved:  
UL File No. E-82272  
UL File No. E-82286  
CSA File No.  
LR-59493/LR-88499



BABT Production Facility Certificate



## Advertising Example:

ENERGY STAR Certification Mark

- ENERGY STAR Blue preferred



Partner Name and Logo

Address  http://www.astec.com/

Emerson Network Power Emerson Network Power Divisions




[HOME](#)  
[SITE MAP](#)  
[CONTACT US](#)

About Astec
News
Products
Sales Offices
Stock Check
Reference Library
Product Support

---

## Astec Power

**Welcome to Astec Power!**

Astec Power is a worldwide and leading supplier of standard, modified standard, custom AC/DC and DC/DC power supplies from 1 watt to 18,000 watts. A wholly owned subsidiary of Emerson (EMR:NYSE), the firm is headquartered in San Diego, California and is dedicated to advanced research and development, followed by sophisticated manufacturing automation and in-process testing to deliver power system solutions. Astec Power has design and production operations on three continents to best serve its international customer base with quality products that are reliable, delivered on-time and competitively priced.

---

**New Features**



This powerful tool is designed to allow design engineers to enter their power requirements and the tool will quickly present them with the power product that meets their design and power specifications. [Astec's Power Wizard](#) then allows the user to examine the specifications, dimensions and cost of each possible power solution, examine distributor inventories and

**Explore**

NEW!

Have you signed up for Emerson Network Power's [FREE e-News](#)?

---

**Model Number**

Type the Astec model number in the field below to go to the datasheet

Find Model Number

If you don't know the model number you need, visit our [Product Selection](#) page.

---

**News**

Press Release

[Emerson Introduces A Switching Power Supply](#)

Web site Example:  
ENERGY STAR  
Partnership Mark



# Labeling Requirements TBD



- Draft 2 will have more specific details and examples regarding how the mark can be used by power supply manufacturers on their Web site, specification sheets, packaging, etc.

# Draft 2 Specification Time Line for Power Supplies



- **May 24, 2004:** Third Workshop in San Francisco
- **Late June:** Draft 2 specification released for comment
- **Late July 2004:** Stakeholder comments due on Draft 2
- **August 2004:** Specification finalized
- **September 2004:** Tentative launch of final specification
  - Power China 2004, Beijing, China
  - EPA will sign up **Charter** manufacturing partners

# Timetable for Incorporating Power Supplies into Existing Product Specifications



<b>Product Area</b>	<b>Internal/External Power Supply</b>	<b>Anticipated Timeframe</b>
Monitors	Internal/External	In Process
Cordless Phones	External	2004
Mobile Phones	External	2004
Printers/Faxes/ Scanners/Copiers/MFDs	Internal/External	2004-2005
Set-top Boxes	Internal	2004-2005
Computers/Laptops/ Servers	Internal/External	2005
Televisions	Internal	2005
Audio/DVD	Internal/External	2005