

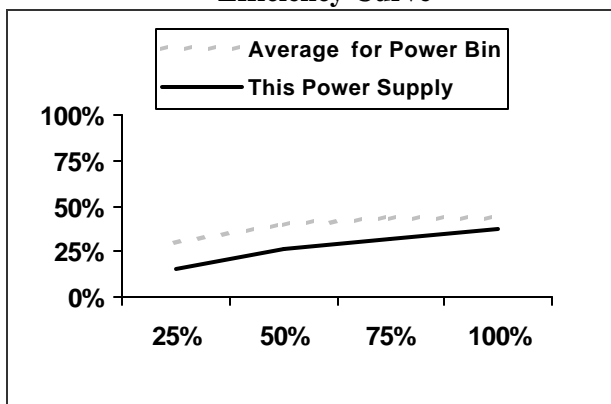
# External Power Supply Efficiency Test Report

**Brand Name** ICOM  
**Model** BC-25U **Type** Linear  
**Product Powered (if known)**  
**Date Measured** 6/10/2003 **Test ID** PS12-9

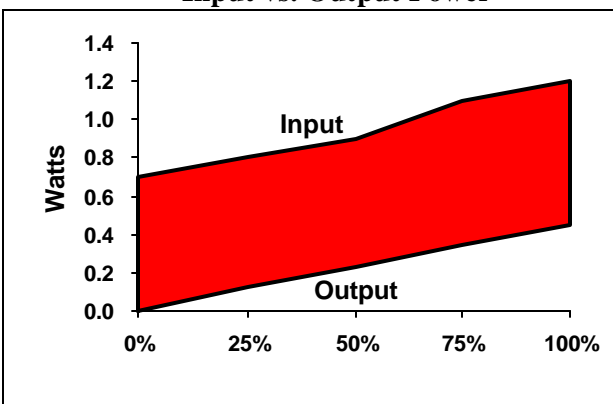


Rated Product Specifications	Input	Output	Units
Voltage	120	12	Volts
Current		50	mA
Power (Watts)		0.6	Watts
Current and Voltage Type	AC	DC	NA
Frequency	60	NA	Hz

**Efficiency Curve**



**Input vs. Output Power**



Percent of Rated Load	No Load	Active Power Measurements				
	0%	25%	50%	75%	100%	Average
mA Output		13	25	38	50	
Volts Output		9.5	9.3	9.1	8.9	
Watts Output		0.1	0.2	0.3	0.4	
Watts Input	0.70	0.8	0.9	1.1	1.2	
Volts Input						
Watts Consumed by Power Supply	0.70	0.7	0.7	0.8	0.8	
Efficiency		15.5%	25.9%	31.4%	37.1%	27.5%
No Load Power (Watts)	0.7					
Total Harmonic Distortion (THD)						
True Power Factor (Watts/VA)		0.25	0.28	0.34	0.36	0.50
Average Efficiency for Power Bin (<2.5 watts rated output power)		30.0%	39.3%	42.5%	42.7%	38.6%
Average No Load for Power Bin	0.77					



801 Florida Road, Suite 6  
Durango, CO 81301

Tested by: Travis Reeder  
and Riley Neugebauer