

# Installation Instructions for Netscape 7.0

This document provides system requirements and instructions for installing the Netscape 7.0 software on a Windows, Mac OS, or Linux computer.

## Checking your display settings

Regardless of the system you're using, your monitor must be set to "Thousands of Colors" if you want to use the Modern theme. If your monitor is limited to 256 colors, you should use the Classic theme. See "Appearance Preferences—Themes" in the onscreen help for more information about themes. If you don't check the settings before installation, you can always change them afterwards if the need arises.

## System requirements

The following tables provide the minimum requirements for installing the Netscape 7.0 software on a Windows, Mac OS, or Linux computer, along with the minimum and maximum amount of space your installation will consume. As with any other software, a faster processor and/or additional RAM may result in increased performance.

The installation process creates temporary files that take up significant amounts of disk space. The disk space amounts given below are subdivided into space for installation and space for operation. After installation is complete, the temporary file storage area is available for other uses.

**Table 0-1**

<b>Windows PC</b>	
Operating System	Windows 98 or 98SE Windows Me Windows NT 4.0 Windows 2000 Windows XP
Minimum Processor Requirement	Pentium 233 MHz
Minimum RAM Requirement	64 MB
Minimum Free Hard Disk Space for Installation	52 MB
Minimum Free Hard Disk Space for Operation	26 MB

**Table 0-2**

<b>Mac OS Computer</b>	
Operating System	Mac OS 8.6 or later Mac OS 9.1 or later Mac OS X (10.1 or later preferred)
Minimum Processor Requirement	PowerPC 604e 266 MHz, G3 or G4
Minimum RAM Requirement	64 MB
Minimum Free Hard Disk Space for Installation	72 MB
Minimum Free Hard Disk Space for Operation	36 MB

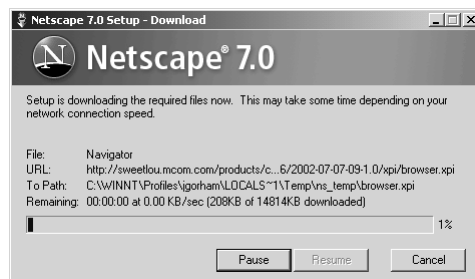
**Table 0-3**

<b>Linux PC</b>	
Operating System	Red Hat Linux 6.2 Red Hat Linux 7.0 or above  Linux kernel 2.2.14 or later with:  glibc 2.1.0 or later gtk+ 1.2.0 or later (1.2.5 or later preferred) XFree86 3.3.6
Minimum Processor Requirement	Pentium 233 MHz
Minimum RAM Requirement	64 MB
Minimum Free Hard Disk Space for Installation	52 MB
Minimum Free Hard Disk Space for Operation	26 MB

## Pause and resume

Regardless of the system on which you install, the Netscape 7.0 installer allows you to pause and resume the download process. This is particularly important if you have a relatively slow dial-up connection, where downloading can take a considerable amount of time. If you need to make a telephone call, simply click Pause. When you're ready to start in again, click Resume. In addition, if the connection fails, Netscape treats this as a pause. Instead of having to start over, simply click Resume.

**NOTE:** You must stay connected while downloading. If you pause, you must click Resume to reconnect and continue. You can't download while offline.



## Installation

The Netscape 7.0 CD offers the easiest and fastest way to install the software. You can also download the software, at no charge, from the following URL: <http://channels.netscape.com/ns/browsers/download.jsp>.

In order to download the software, you must already have a browser installed. It doesn't have to be a Netscape browser; any browser capable of the download is adequate.

## Uninstalling earlier versions

If you've installed an earlier Netscape 6 version, you may want to uninstall the older software before installing Netscape 7.0. Usually this is unnecessary, but it can prevent any problems with previous versions from being inherited.

You don't need to uninstall any version of Netscape earlier than 6.0 or any version of Internet Explorer, and you shouldn't do so before installation. If you do, Netscape 7.0 won't be able to import any data from them. Once installation is complete, however, you can delete the other programs to save space if you choose to.

You can uninstall using one of the following procedures, depending on whether you're using a Windows, Linux, or Mac OS computer.

### Uninstalling from a Windows computer

1. From the Start menu, point to Settings and then click Control Panel.
2. Double-click Add/Remove Programs in the Control Panel.
3. Click the Install/Uninstall tab in the dialog box that appears.
4. Select Netscape 6, click Add/Remove, and then click OK.

### Uninstalling from a Linux computer

1. Navigate to the directory where you installed Netscape 6 or 6.01.  
This will usually be `cd/usr/local`.
2. Type `rm -rf netscape`.

### Uninstalling from a Mac OS computer

1. Open the Preferences folder inside the System Folder.
2. Drag the Mozilla Registry and Mozilla Versions files from the Preferences folder to the Trash.
3. Drag the Netscape Folder to the Trash.

## Accessing and saving the read-me file

The read-me file contains important information you should read before using your Netscape 7.0 software. You access it differently depending on the type of computer you're using. If you're downloading, you can access the read-me file at the download site. If you're installing from the CD, the following procedures apply:

- **On a Windows computer:** Click the Read-Me button on the Set Up Options screen. See steps 8 and 9 of “Installing onto a Windows computer.”
- **On a Mac OS computer:** Click the Read-Me icon on the CD before installing. See steps 1 and 2 of “Installing on a Mac OS computer.” You can also click the Read-Me button on the Welcome screen.
- **On a Linux computer:** The read-me file is incorporated into the Installer. See steps 2 and 3 of “Installing on a Linux computer.” The read-me file can also be seen separately as a text file on the CD.

It’s a good idea to save the read-me file on your computer. The read-me file is a text file and opens in your computer’s default text editor on either Mac OS or Windows. It also opens as a text file on Linux when you access it on its own from the CD rather than as a screen in the Installer.

To save the read-me file:

1. Open the File menu in the text editor and click Save As.
2. Give the read-me file an identifying name, such as “Netscape 7.0 Read-Me,” and click Save.

## Installing onto a Windows computer

The Netscape CD is set up so that installation onto a Windows machine is automatic.

1. If you’re installing from the CD, insert it into your computer’s CD-ROM drive.

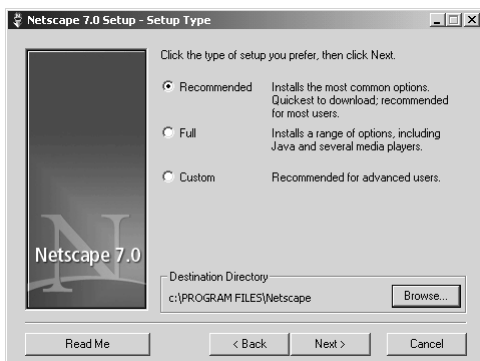
After a series of setup screens appears, the installation process begins and the Welcome screen appears. You can skip steps 2 through 4, which apply to downloading.



2. If you’re downloading the software, click the Download button to begin the download.  
The installer file appears in a Save As dialog box. Its name is “NSSetup.exe.”
3. Click Save.  
Be sure to note where the file is going to be saved.
4. Double-click the NSSetup.exe file.  
The Welcome screen appears, as shown above.
5. Click Next.  
The License Agreement appears.

6. Read the License Agreement in its entirety and then click Accept if you want to continue with the installation.

If you click Accept, the Setup Type screen appears, as shown below.



7. Choose an installation mode.
  - o **Recommended:** Installs the most commonly-needed options.
  - o **Full:** Installs the entire program, including Java and a selection of language packages.
  - o **Custom:** Lets you pick and choose options, and is especially useful if you want one or more specific language packages.

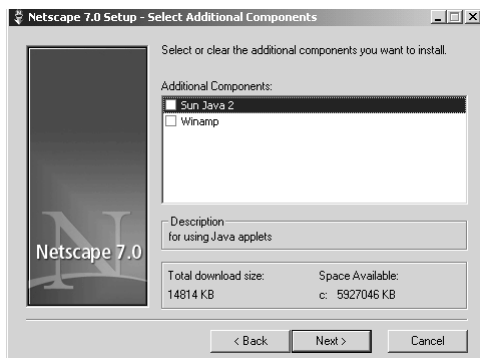
8. Click the Read-Me button to read the read-me file.

9. When you've finished the read-me file, save it, and then click the Close box.

You return to the Setup Type screen.

10. Click Next.

The Select Additional Components screen appears, as shown below. You can select either Sun Java 2, Winamp, or both. Sun Java 2 lets you run Java applets, small applications included in some web pages. Winamp lets you run MP3 and other audio files.



11. Select the options you want and click Next.

The Quick Launch screen appears, as shown below. Quick Launch can help speed up launch times for all Netscape components. You can enable or disable Quick Launch during installation. If you don't enable the feature, you can do so later using Preferences. See "Using Quick Launch" in the onscreen help for more information.



12. Do one of the following:

- o If you want to use Quick Launch, which is on by default, click Next.
- o If you don't want to use Quick Launch, click in the checkbox to deselect it and then click Next.

The Additional Options screen appears, as shown below.



13. Accept the default setting to make Netscape.com your home page, or click the checkbox to deselect it.

If you have selected a home page in a previous Netscape version, Netscape 7.0 will use it if you deselect the option. If you don't an established home page, Netscape defaults to Netscape.com. You can, however, select another home page at any time. See "Changing Your Home Page" in the onscreen help for more information.

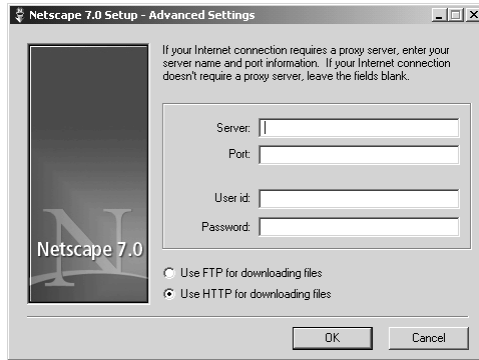
14. If desired, click the checkbox directing Netscape to save installation files locally.

This can save time if you need to re-install, but it will take up disk space.

15. Choose a destination directory or accept the default.

16. If necessary, select the Proxy Settings checkbox.

This is only necessary if your organization requires going through a proxy server as a security measure. (You can find out from your network administrator.) The Advanced Settings screen shown below appears. You'll need to obtain the necessary information from your network administrator. This applies both to the proxy server settings themselves and to the download option choice of FTP or HTTP.



17. Type the information in the fields and click OK.

The Additional Options screen reappears.

18. Click Next.

The Start Install screen appears.



The Start Install screen contains a summary of your installation decisions. If anything appears incorrect, click Back to get the appropriate screen and make the necessary change.

19. After you've reviewed the summary information on the Start Install screen and made any necessary changes, click Install.

The installation process begins. The installation process takes just a few minutes from the CD or over a broadband connection. It can take considerably longer over a dialup connection. When it's complete, Netscape 7.0 opens automatically.



## Installing onto a Mac OS 8.5 through 9.x computer

Netscape 7.0 has been fully certified to run on Mac OS computers running from version 8.5 through any 9.x version of the Apple system software. Netscape 7.0 will also run successfully on Mac OS X computers, but the installation procedure is different.

If you're downloading the software onto a Mac OS computer, you'll need a program such as Stuffit Expander. If necessary, go to [http://www.aladdinsys.com/expander/expander\\_mac\\_login.html](http://www.aladdinsys.com/expander/expander_mac_login.html) to obtain a copy. There's no charge. You don't need to do this if you're installing from the CD.

**NOTE:** Do not disable extensions before installing Netscape 7.0 on a Mac OS computer. Doing so may cause the installation to proceed improperly.

If you're installing from the CD:

1. Double-click the Read-Me icon.
2. When you're through with the read-me file, save it, and then click the Close box.
3. Double-click the Netscape 7.0 Installer icon.

Mac OS versions of the same screens as in the Windows install now appear. Refer to steps 5–15 in “Installing onto a Windows computer.”

**NOTE:** Quick Launch runs only on Windows computers. You won't see the Quick Launch installation screen.

After you click Install on the last screen, the installation process itself begins. When it's complete, Netscape 7.0 opens automatically.

If you're downloading:

1. Read the read-me file on the Download site before installing.
2. Click the `MacNetscape6Installer.sea.bin` link to download it to your computer.
3. Drag and drop the `Netscape6Installer.sea.bin` folder onto the Stuffit Expander icon (or its alias) to expand it.
4. Double-click the Netscape 7.0 folder and then double-click the Netscape 7.0 Installer icon on your desktop.

Mac OS versions of the same screens as in the Windows install now appear. Refer to steps 5–15 in “Installing onto a Windows computer.”

**NOTE:** Quick Launch runs only on Windows computers. You won't see the Quick Launch installation screen.

After you click Install on the last screen, the installation process itself begins. The installation process takes just a few minutes from the CD or over a broadband connection. It can take considerably longer over a dialup connection. When it's complete, Netscape 7.0 opens automatically.

## Installing onto a Mac OS X computer

Installing onto a Mac OS X 10.1.x computer requires a shorter procedure than installing onto a computer running an earlier version of the Mac OS.

If you're downloading the software, you'll need a program such as Stuffit Expander. If necessary, go to [http://www.aladdinsys.com/expander/expander\\_mac\\_login.html](http://www.aladdinsys.com/expander/expander_mac_login.html) to obtain a copy. There's no charge. You don't need to do this if you're installing from the CD.

**NOTE:** Do not disable extensions before installing Netscape 7.0 on a Mac OS computer. Doing so may cause the installation to proceed improperly.

If you're installing from the CD:

1. Double-click the Read-Me icon.
2. When you're through with the read-me file, save it, and then click the Close box.
3. Double-click the Netscape 7.0 icon.

Netscape 7.0 has now been fully installed and opens automatically when you double-click its icon.

If you're downloading:

1. Read the read-me file on the Download site before installing.
2. Click the `Netscape7-macosx.sit.bin` link to download it to your computer.
3. Drag and drop the `Netscape7-macosx.sit.bin` folder onto the Stuffit Expander icon (or its alias) to expand it.
4. Double-click the Netscape 7.0 icon.

Netscape 7.0 has now been fully installed and opens automatically when you double-click its icon.

## Installing onto a Linux computer

To install onto a Linux computer, you must be logged in as a superuser so that you have write permissions for all folders. If don't do this, you may not be able to install the software. See your network administrator if you need to obtain a superuser password.

The Netscape 7.0 release has been fully certified on Red Hat Linux and is supported only for that distribution. It will, however, run successfully on other Linux distributions, such as Debian 2.1 or later or SuSE 7.0 or later. If you're installing onto a computer using those or other distributions, use the system requirements and installation instructions provided here for Red Hat Linux, and make sure that the `glibc 2.1` or later and `libjpeg.so.62` or later libraries are installed.

If you want to install the software on a Sun Microsystems computer, see the Sun web site or check with your Sun representative or network administrator. Because the Sun installation is not officially supported by Netscape, those instructions are not repeated here.

If you're installing from the CD:

1. Double-click the Linux icon on the CD.
2. Double-click the Netscape-Installer icon.  
The read-me file appears.
3. Click Done after you've read the read-me file.

**NOTE:** Save the read-me file from the CD itself rather than from the Installer.

Linux versions of the same screens as in the Windows install now appear. Refer to steps 5–15 in "Installing on a Windows Computer."

NOTE: Quick Launch runs only on Windows computers. You won't see the Quick Launch installation screen.

After you click Install on the last screen, the installation process itself begins. When it's complete, Netscape 7.0 opens automatically.

If you're downloading:

1. Download the `netscape-i686-pc-gnu-installer.tar.gz` archive.
2. If the file is not aimed at the desktop, click browse to choose that location and then click OK.
3. Unzip and untar the archive by typing either of the following at the command line and then pressing Enter or Return:

```
tar -zxvf netscape-i686-pc-linux-gnu-installer.tar.gz  
or  
gzip dc netscape-i686-pc-linux-gnu-installer.tar.gz | tar xvf -
```

4. Type `cd Netscape-Installer` at the command prompt to get to the Netscape Installer folder.
5. Launch the Installer with the following script:

```
./netscape-installer
```

Linux versions of the same screens as in the Windows install now appear. Refer to steps 5–15 in “Installing onto a Windows computer.”

NOTE: Quick Launch runs only on Windows computers. You won't see the Quick Launch installation screen.

After you click Install on the last screen, the installation process itself begins. The installation process takes just a few minutes from the CD or over a fast connection. It can take considerably longer over a slow connection. When it's complete, Netscape 7.0 opens automatically.