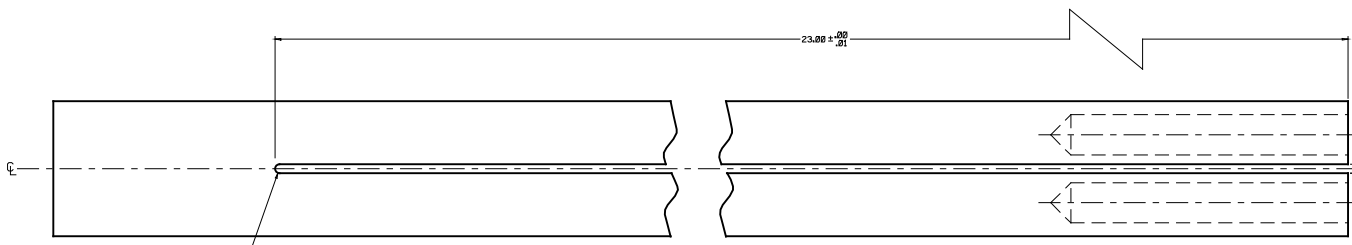
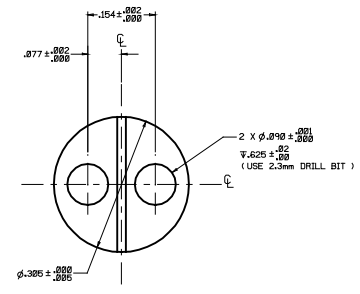
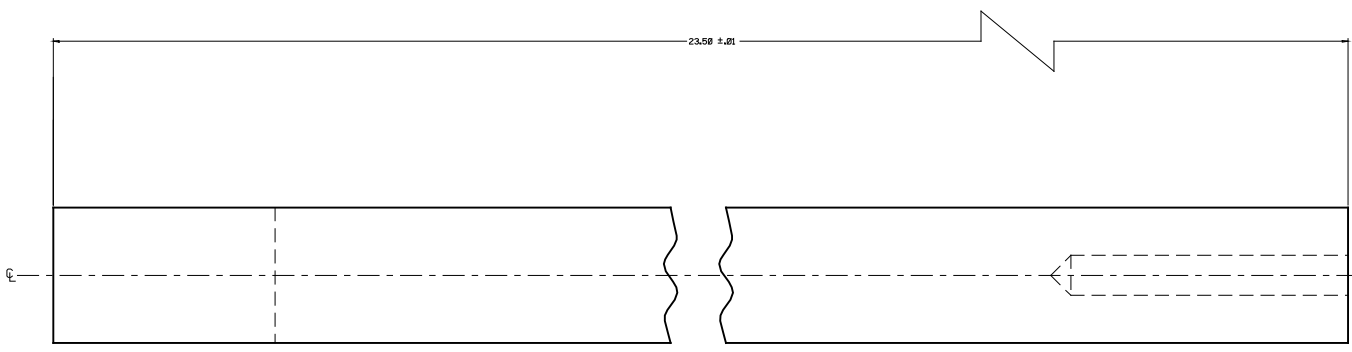


THIS DRAWING IS THE PROPERTY OF THE AIR FORCE. IT IS TO BE KEPT IN CONFIDENCE AND IS NOT TO BE REPRODUCED OR TRANSMITTED IN ANY FORM OR BY ANY MEANS, ELECTRONIC OR MECHANICAL, INCLUDING PHOTOCOPYING, RECORDING, OR BY ANY INFORMATION STORAGE AND RETRIEVAL SYSTEM, WITHOUT THE EXPRESS WRITTEN PERMISSION OF THE AIR FORCE.

REV	DESCRIPTION	DATE	APPROVAL



SAW RUNOUT OR FULL RADIUS

MACHINING DETAIL

SCALE: 10:1

SK04282004

**PRELIMINARY**  
 HAS NOT COMPLETED REVIEW CYCLE  
 AND IS SUBJECT TO CHANGE  
 04-28-04

UNLESS OTHERWISE SPECIFIED DIMENSIONS ARE IN INCHES FRACTIONS DECIMALS MILLIMETERS 1/16 .0031 1/8 .0062 3/16 .0125 1/4 .0250 5/16 .0312 3/8 .0625 1/2 .1250 5/8 .1562 3/4 .1875 7/8 .2187 1 .2500 TOLERANCES UNLESS OTHERWISE SPECIFIED: BUILDING 4550 NEXT ANNOTATION: EINAL	HEATER ELEMENT	HEATER ELEMENT	SPECIAL TEST EQUIPMENT
	GRAPHITE ROD	GRAPHITE ROD	DESIGN GROUP
	GRAPHITE ROD	GRAPHITE ROD	SPACE FLIGHT CENTER
	GRAPHITE ROD	GRAPHITE ROD	AFZC SUBSTATION
DATE: 04-28-04	BY: JDD	DATE: 04-28-04	BY: JDD
NOTED		NOTED	
			SK04282004