

Summary Scores
NPHPS State Public Health System Performance Assessment Instrument

Date Submitted: 22JAN2003

Description	Score
EPHS 1: Monitor Health Status	21
1.1 Planning and Implementation	28
1_1_1 Develop surveillance programs to measure health status	39
1_1_2 Organize data in a state health profile	33
1_1_3 Track state health trends	33
1_1_4 Compile and provide data to organizations for surveillance	14
1_1_5 Collaborate to assure timely collection, analysis and dissemination of data	22
1_1_6 Develop a uniform set of health indicators	22
1_1_7 Enforce laws and use protocols to protect personal health information and data with personal identifiers	33
1.2 Technical Assistance and Support	20
1_2_1 Offer training on the interpretation and use of data	11
1_2_2 Assist in developing information systems	33
1_2_3 Provide a standard set of health-related data to partners	22
1_2_4 Assist in publication of health data useful to the media and health planners	0
1_2_5 Communicate availability of assistance in health surveillance and data use to local public health systems	33
1.3 Evaluation and Quality Improvement	24
1_3_1 Review efforts to monitor health status	6
1_3_2 Information is used in continuous improvement of data and data systems	33

Centers for Disease Control and Prevention

Public Health Practice Program Office

Division of Public Health Systems Development and Research

National Public Health Performance Standards Program

1-800-PHPP0-49 or 1-800-747-7649

Summary Scores
NPHPSP State Public Health System Performance Assessment Instrument

Date Submitted: 22JAN2003

Description	Score
1_3_3 Solicit feedback from partners regarding state health profile development and distribution	33
1.4 Resources	9
1_4_1 Effectively manage current health status monitoring resources and develop new resources	0
1_4_2 Share system-wide resources to monitor health status	0
1_4_3 Use technology to monitor statewide health status	19
1_4_4 Use personnel with statistical, epidemiological and systems management expertise for health status monitorin	16
EPHS 2: Diagnose and Investigate Health Problems	37
2.1 Planning and Implementation	35
2_1_1 Operate surveillance systems that recognize threats to public health	26
2_1_2 Operate a reporting system to identify potential threats to public health	38
2_1_3 Collaborate with laboratories with capacity to analyze specimens	53
2_1_4 Develop plans to investigate and respond to public health threats	20
2.2 Technical Assistance and Support	30
2_2_1 Provide assistance to local public health systems and state partners to interprete epidemiologic findings	11
2_2_2 Provide laboratory assistance to the local public health systems and state partners	37
2_2_3 Provide local public health systems and state partners with information about possible health threats	4
2_2_4 Provide trained on-site personnel to assist communities with investigations	67

Centers for Disease Control and Prevention

Public Health Practice Program Office

Division of Public Health Systems Development and Research

National Public Health Performance Standards Program

1-800-PHPPO-49 or 1-800-747-7649

Summary Scores
NPHPS State Public Health System Performance Assessment Instrument

Date Submitted: 22JAN2003

Description	Score
2.3 Evaluation and Quality Improvement	19
2_3_1 Periodically review effectiveness of the state surveillance system	11
2_3_2 Periodically review public health threat investigation and response plans	11
2_3_3 Review information to improve surveillance system responsiveness to health threats	33
2.4 Resources	50
2_4_1 Manage current resources to support diagnosis and investigation and develop new resources	37
2_4_2 Share system-wide resources to diagnose and investigate health hazards and problems	11
2_4_3 Provide screening tests in response to exposures to health hazards	33
2_4_4 Use laboratory facilities that support diagnostic investigation of public health threats	56
2_4_5 Use laboratory facilities with capacity to identify diseases required by the state or included in National N	100
2_4_6 Use in-state laboratories to investigate key diseases and conditions	87
2_4_7 Use epidemiologic expertise to identify and analyze public health threats and hazards	40
2_4_8 Use multiple disciplines to investigate adverse public health events	36
EPHS 3: Inform, Educate, and Empower People	11
3.1 Planning and Implementation	18
3_1_1 Design and implement health communication, health promotion and education programs	26
3_1_2 Collaborate to design and implement health communication, health promotion and education programs	13

Centers for Disease Control and Prevention

Public Health Practice Program Office

Division of Public Health Systems Development and Research

National Public Health Performance Standards Program

1-800-PHPP0-49 or 1-800-747-7649

Summary Scores
NPHSP State Public Health System Performance Assessment Instrument

Date Submitted: 22JAN2003

Description	Score
3_1_3 Deliver culturally and linguistically appropriate health education and health promotion materials and activi	0
3_1_4 Use multiple channels to provide current health information, education and promotion services	33
3.2 Technical Assistance and Support	12
3_2_1 Enable partners to develop skills to improve community and personal health	33
3_2_2 Provide technical assistance in health communication, health promotion and education to partners	14
3_2_3 Assist partners to develop of effective health communication, health education and health promotion strategi	0
3_2_4 Provide consultation and training relevant to effective health communication and health education\promotion	0
3.3 Evaluation and Quality Improvement	2
3_3_1 Periodically review health communication and health education\promotion interventions	6
3_3_2 Involve the population served in the design and implementation of reviews	0
3_3_3 Apply review findings to improve health communication and health education\promotion interventions	0
3.4 Resources	11
3_4_1 Manage current and develop new health communication and health education\promotion resources	11
3_4_2 Share system-wide resources to implement health communication, health education and promotion services	11
3_4_3 Use resources for effective health communication, and health education and promotion interventions	9
3_4_4 Use professional expertise for effective health communication	10
3_4_5 Use professional expertise for effective health education\promotion interventions	14

Centers for Disease Control and Prevention

Public Health Practice Program Office

Division of Public Health Systems Development and Research

National Public Health Performance Standards Program

1-800-PHPP0-49 or 1-800-747-7649

Summary Scores
NPHPS State Public Health System Performance Assessment Instrument

Date Submitted: 22JAN2003

Description	Score
EPHS 4: Mobilize Partnerships	15
4.1 Planning and Implementation	33
4_1_1 Build constituencies to address health issues	52
4_1_2 Build partnerships to identify and solve health problems	31
4_1_3 Brief state and local policy leaders using established procedures and timelines	17
4.2 Technical Assistance and Support	16
4_2_1 Provide consultation to local health systems and state partners to build partnerships for community health	10
4_2_2 Provide training to local health systems and state partners to build partnership for community health impro	22
4.3 Evaluation and Quality Improvement	0
4_3_1 Review constituency-building and partnership facilitation activities	0
4_3_2 Review the participation and commitment of its partners	0
4.4 Resources	11
4_4_1 Manage current constituency development and partnership mobilization resources and develop new resources	15
4_4_2 Share system-wide resources to develop constituencies and mobilize partnerships	7
4_4_3 Maintain information about organizations that are current and potential partners	0
4_4_4 Commit resources to sustain partnerships	17
4_4_5 Utilize workforce expertise in collaborative group processes necessary to assist partners to organize and ac	14

Centers for Disease Control and Prevention

Public Health Practice Program Office

Division of Public Health Systems Development and Research

National Public Health Performance Standards Program

1-800-PHPP0-49 or 1-800-747-7649

Summary Scores
NPHPS State Public Health System Performance Assessment Instrument

Date Submitted: 22JAN2003

Description	Score
EPHS 5: Develop Policies and Plans	5
5.1 Planning and Implementation	4
5_1_1 Implement statewide health improvement processes that facilitate collaboration	2
5_1_2 Include health objectives and improvement strategies in state health improvement plan	0
5_1_3 Conduct policy development activities	9
5.2 Technical Assistance and Support	4
5_2_1 Provide technical assistance to local public health systems and state partners to conduct community health i	8
5_2_2 Provide technical assistance to integrate health issues and strategies into local community development plan	0
5_2_3 Provide technical assistance to develop local operational plans to address the state health improvement plan	0
5_2_4 Provide technical assistance in local health policy development	7
5.3 Evaluation and Quality Improvement	0
5_3_1 Review progress towards accomplishing state-wide health improvement	0
5_3_2 Periodically review policy impact	0
5_3_3 Modify health improvement and policy actions based on reviews	0
5.4 Resources	9
5_4_1 Manage current resources for health planning and policy and develop new resources	4

Centers for Disease Control and Prevention

Public Health Practice Program Office

Division of Public Health Systems Development and Research

National Public Health Performance Standards Program

1-800-PHPP0-49 or 1-800-747-7649

Summary Scores
NPHPS State Public Health System Performance Assessment Instrument

Date Submitted: 22JAN2003

Description	Score
5_4_2 Share system-wide resources to implement health planning and policy development	4
5_4_3 Use workforce expertise in strategic, long-range, and operational planning	0
5_4_4 Use workforce expertise in health policy	6
5_4_5 Use information systems that provide useful data for policy development and planning	33
EPHS 6: Enforce Laws and Regulations	4
6.1 Planning and Implementation	8
6_1_1 Review state laws and regulations designed to protect public health and safety	4
6_1_2 Solicit input on compliance and enforcement issues for laws and regulations reviewed	11
6_1_3 Provide education to encourage compliance with public health laws or regulations	0
6_1_4 Use written guidelines to administer public health enforcement activities	33
6_1_5 Ensure administrative processes are customer-centered	0
6_1_6 Enforce health and safety laws and regulations through collaborative efforts	0
6.2 Technical Assistance and Support	0
6_2_1 Provide technical assistance to local public health systems and state partners to enforce public health laws	0
6_2_2 Assure enforcement training for enforcement personnel	0
6_2_3 Provide direct assistance to local public health systems and state partners in complex enforcement operation	0
6_2_4 Provide local governing bodies with assistance to develop ordinances	0

Centers for Disease Control and Prevention

Public Health Practice Program Office

Division of Public Health Systems Development and Research

National Public Health Performance Standards Program

1-800-PHPP0-49 or 1-800-747-7649

Summary Scores
NPHPSP State Public Health System Performance Assessment Instrument

Date Submitted: 22JAN2003

Description	Score
6.3 Evaluation and Quality Improvement	0
6_3_1 Review capacity to conduct enforcement functions within the state	0
6_3_2 Monitor enforcement procedures to assure for professional conduct of personel	0
6_3_3 Review technical assistance provided to local public health systems and state partners regarding enforcement	0
6_3_4 Make improvements in enforcement activities based on review of findings	0
6.4 Resources	4
6_4_1 Manage current resources used to enforce and develop new resources	0
6_4_2 Share system-wide resources to implement enforcement activities	0
6_4_3 Use expertise in legislative and regulatory processes	7
6_4_4 Use workforce expertise to enforce public health laws and regulations	11
6_4_5 Use workforce expertise to educate those affected by public health laws and regulations	0
EPHS 7: Link People to Needed Personal Health Services	36
7.1 Planning and Implementation	31
7_1_1 Assess availability of state-wide personal health care services	30
7_1_2 Collaborate to identify medically underserved populations	32
7_1_3 Work with health care providers to assure care for persons living in the state	11
7_1_4 Inform policymakers of barriers to accessing personal health care services	44
7_1_5 Deliver services and programs to improve access to personal health care	36

Centers for Disease Control and Prevention

Public Health Practice Program Office

Division of Public Health Systems Development and Research

National Public Health Performance Standards Program

1-800-PHPP0-49 or 1-800-747-7649

Summary Scores
NPHPSP State Public Health System Performance Assessment Instrument

Date Submitted: 22JAN2003

Description	Score
7.2 Technical Assistance and Support	61
7_2_1 Assist to identify barriers to health care access	67
7_2_2 Assist in developing partnerships to reduce barriers and promote access to health care for underserved popul	67
7_2_3 Assist in designing health care delivery programs for underserved populations	67
7_2_4 Provide health care services at the local level when they cannot be satisfactorily delivered by others	67
7_2_5 Work with health state partners and local public health systems to coordinate complementary programs to opti	67
7_2_6 Provide technical assistance to safety-net providers	30
7.3 Evaluation and Quality Improvement	23
7_3_1 Review programs that assure the provision of needed personal health services	14
7_3_2 Incorporate perspectives of those who experience problems with accessibility and availability of health care	44
7_3_3 Institute change in programs to assure health care based on findings from monitoring and evaluation activit	11
7.4 Resources	25
7_4_1 Manage current resources and develop future resources to assure the provision of personal health care	22
7_4_2 Share system-wide resources to effectively provide needed personal health care	7
7_4_3 Entity responsible for monitoring state-wide personal health care delivery	39
7_4_4 Use workforce skills in reviewing health care services	44
7_4_5 Use a workforce skilled in the analysis of health services	22
7_4_6 Use a workforce skilled in managing health services quality improvement programs	11

Centers for Disease Control and Prevention

Public Health Practice Program Office

Division of Public Health Systems Development and Research

National Public Health Performance Standards Program

1-800-PHPP0-49 or 1-800-747-7649

Summary Scores
NPHPSP State Public Health System Performance Assessment Instrument

Date Submitted: 22JAN2003

Description	Score
7_4_7 Use a workforce skilled in the delivery of health care services programs and linking people to needed servi	31
EPHS 8: Assure a Competent Public and Workforce	11
8.1 Planning and Implementation	16
8_1_1 Assess workforce needs to deliver state-wide health care services	9
8_1_2 Develop statewide workforce development plan to guide workforce development	0
8_1_3 Human resources development programs provide training to enhance needed workforce skills	7
8_1_4 Individuals in regulated professions meet prescribed competencies required by law or recommended by state, o	67
8_1_5 Support initiatives that encourage life-long learning	6
8_1_6 Workforce applies leadership skills to community health improvement activities	6
8.2 Technical Assistance and Support	9
8_2_1 Assist in completing workforce assesment	0
8_2_2 Assist in workforce development	0
8_2_3 Assure availability of educational courses to enhance workforce skills	2
8_2_4 Facilitate partner linkages to improve educational offerings	33
8.3 Evaluation and Quality Improvement	5
8_3_1 Review workforce assessment activities	0
8_3_2 Assess achievements of workforce development plan	0

Centers for Disease Control and Prevention

Public Health Practice Program Office

Division of Public Health Systems Development and Research

National Public Health Performance Standards Program

1-800-PHPPO-49 or 1-800-747-7649

Summary Scores
NPHPS State Public Health System Performance Assessment Instrument

Date Submitted: 22JAN2003

Description	Score
8_3_3 Use performance appraisal programs to stimulate workforce quality improvement	15
8.4 Resources	10
8_4_1 Manage current workforce development resources and develop future resources	11
8_4_2 Share system-wide resources to conduct workforce activities	0
8_4_3 Use a system of life-long learning for workforce	10
8_4_4 Use leadership development programs for state wide workforce	0
8_4_5 Use programs to develop cultural competencies among state wide and personal workforce	0
8_4_6 Use expertise in management of human resource development programs	13
8_4_7 Invest in state wide recruitment and retention of qualified health professionals	33
EPHS 9: Evaluate Effectiveness, Accessibility and Quality	8
9.1 Planning and Implementation	3
9_1_1 Evaluate state wide population-based health service	2
9_1_2 Evaluate state wide personal health services within the state	15
9_1_3 Establish and use standards to assess performance of the state health system	0
9_1_4 Monitor multi-year health programs to assure interventions are appropriately focused to achieve health servi	0
9_1_5 Use assessment finding to institute quality improvement changes in specific health services	0
9.2 Technical Assistance and Support	18

Centers for Disease Control and Prevention

Public Health Practice Program Office

Division of Public Health Systems Development and Research

National Public Health Performance Standards Program

1-800-PHPP0-49 or 1-800-747-7649

Summary Scores
NPHPSP State Public Health System Performance Assessment Instrument

Date Submitted: 22JAN2003

Description	Score
9_2_1 Provide technical assistance in reviewing of population-based and personal health services	4
9_2_2 Provide technical assistance in evaluating performance of the Essential Public Health Services	0
9_2_3 Offer consultation service and guidance to conduct consumer satisfaction studies	33
9_2_4 Share results of performance evaluations with partners for health improvement and strategic planning	33
9.3 Evaluation and Quality Improvement	11
9_3_1 Review evaluation and quality improvement	0
9_3_2 Review evaluation quality improvement activities when weaknesses become apparent	33
9_3_3 Use results of reviews for improvement of evaluation and quality improvement activities	0
9.4 Resources	3
9_4_1 Mange current evaluation resources and develop new resources	0
9_4_2 Share system-wide resources to effectively conduct evaluation activities	0
9_4_3 Analytical tools needed to measure and monitor compliance with performance standards for population-based an	11
9_4_4 Use expertise to establish standards, monitor and develop quality improvement activities to improve performa	0
EPHS 10: Research for New Insights and Innovative Solutions	0
10.1 Planning and Implementation	0
10_1_1 Have a public health research agenda	0
10_1_2 Implement the pubic health research agenda	0
10_1_3 Have statewide communication process for sharing research findings on innovative public health practices	0

Centers for Disease Control and Prevention

Public Health Practice Program Office

Division of Public Health Systems Development and Research

National Public Health Performance Standards Program

1-800-PHPPO-49 or 1-800-747-7649

Summary Scores
NPHPSP State Public Health System Performance Assessment Instrument

Date Submitted: 22JAN2003

Description	Score
10.2 Technical Assistance and Support	3
10_2_1 Help with research activities	6
10_2_2 Assist in use of research findings	0
10.3 Evaluation and Quality Improvement	0
10_3_1 Review its ability to engage in public health research	0
10_3_2 Review its ability to communicate information on research findings	0
10_3_3 Review ability to provide technical assistance with application of research findings in the delivery of Ess	0
10_3_4 Review relevance of research activities	0
10_3_5 Use findings from reviews to improve research activities	0
10.4 Resources	0
10_4_1 Manage current research resources and develop new resources	0
10_4_2 Share system-wide resources to conduct research activities	0
10_4_3 Invest resources in analytical tools necessary to support the research function	0
10_4_4 Use workforce expertise to direct research activities	0
10_4_5 Use workforce expertise to develop and implement research agendas	0
Average Total Performance Score	16

Centers for Disease Control and Prevention

Public Health Practice Program Office

Division of Public Health Systems Development and Research

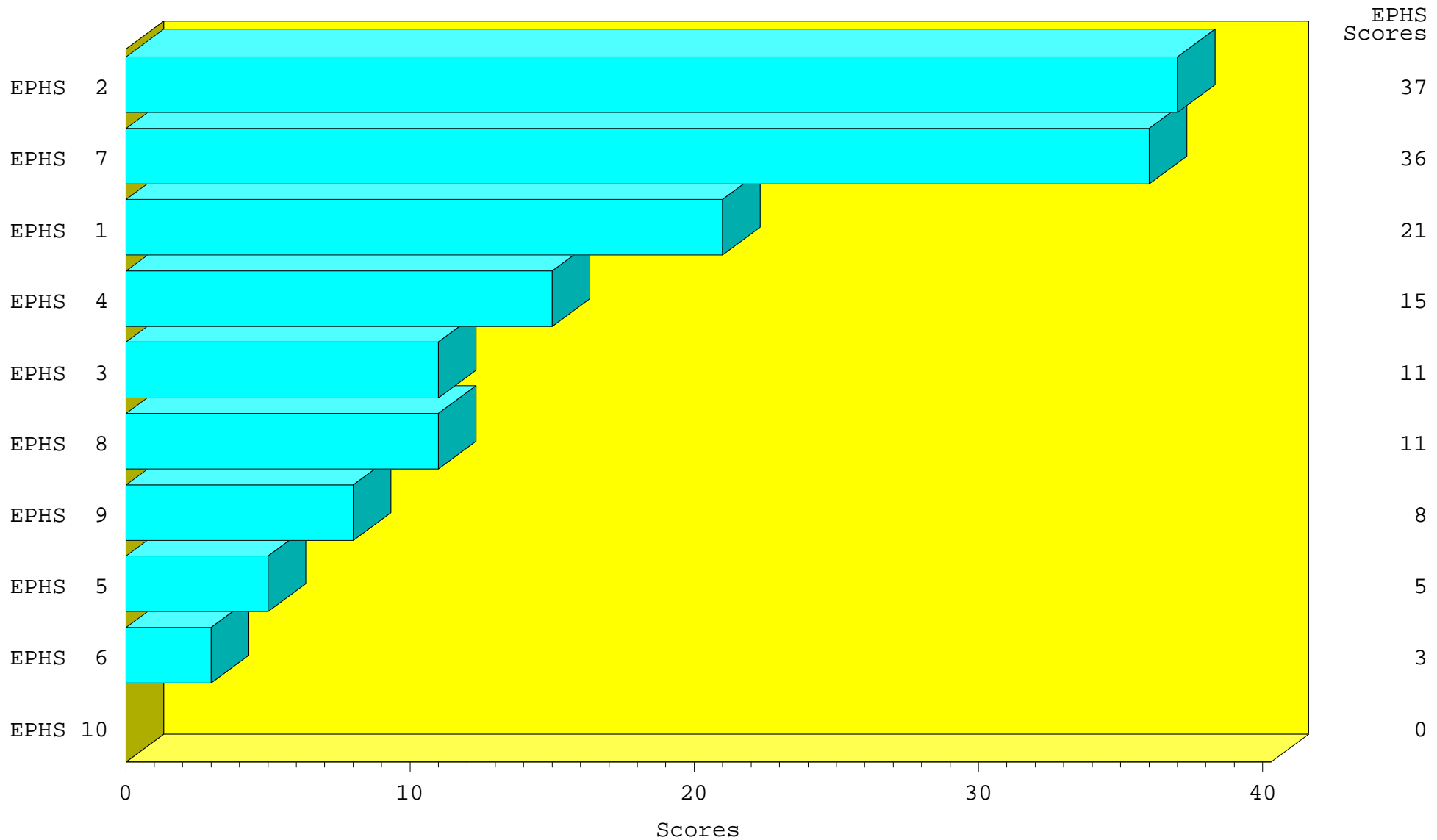
National Public Health Performance Standards Program

1-800-PHPP0-49 or 1-800-747-7649

NPHPSP State Public Health System Performance Assessment Instrument

Essential Public Health Service (EPHS) Summary Scores (arranged in descending order)

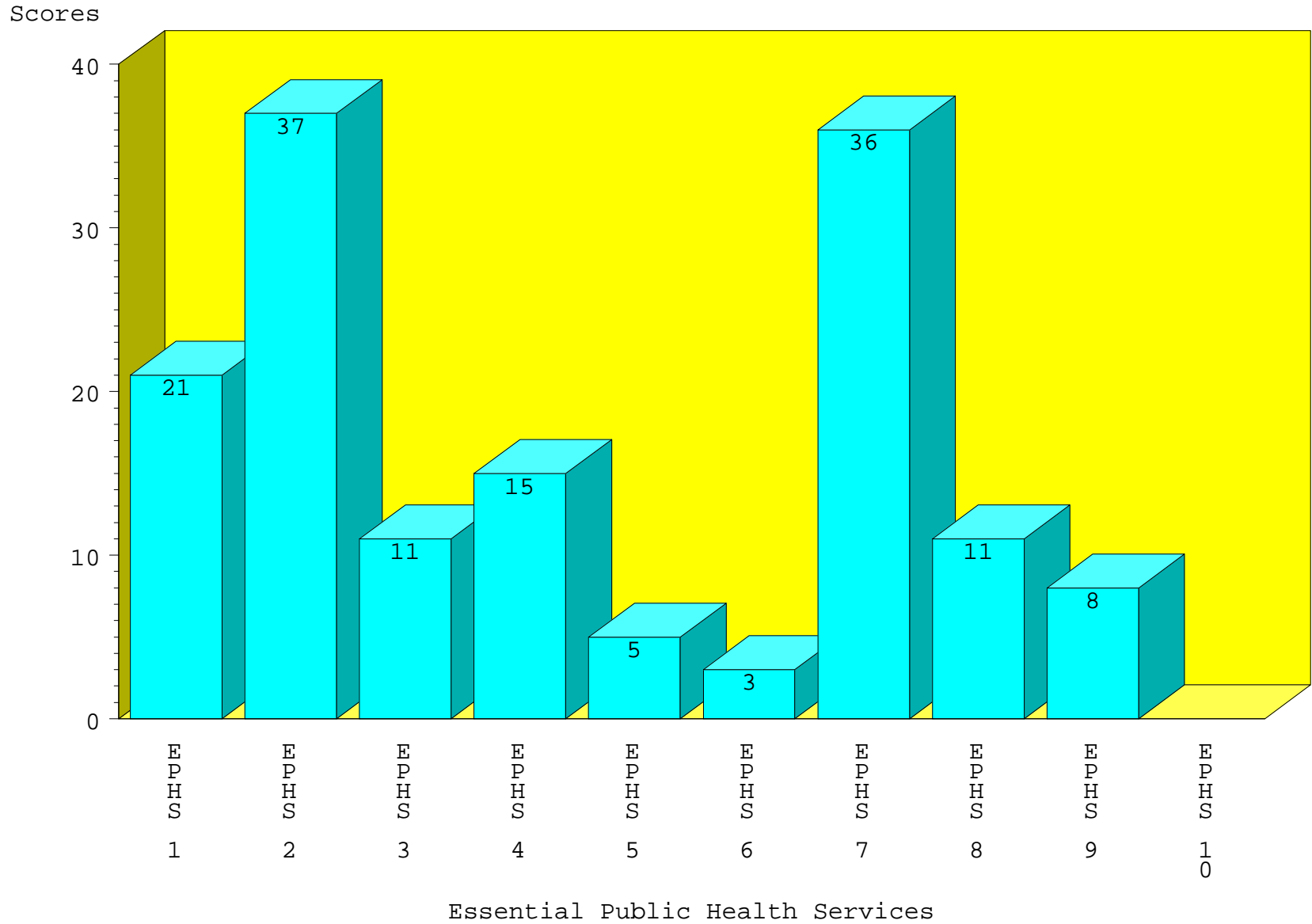
Date Submitted: 22JAN2003



NPHPSP State Public Health System Performance Assessment Instrument

Essential Public Health Service (EPHS) Summary Scores

Date Submitted: 22JAN2003

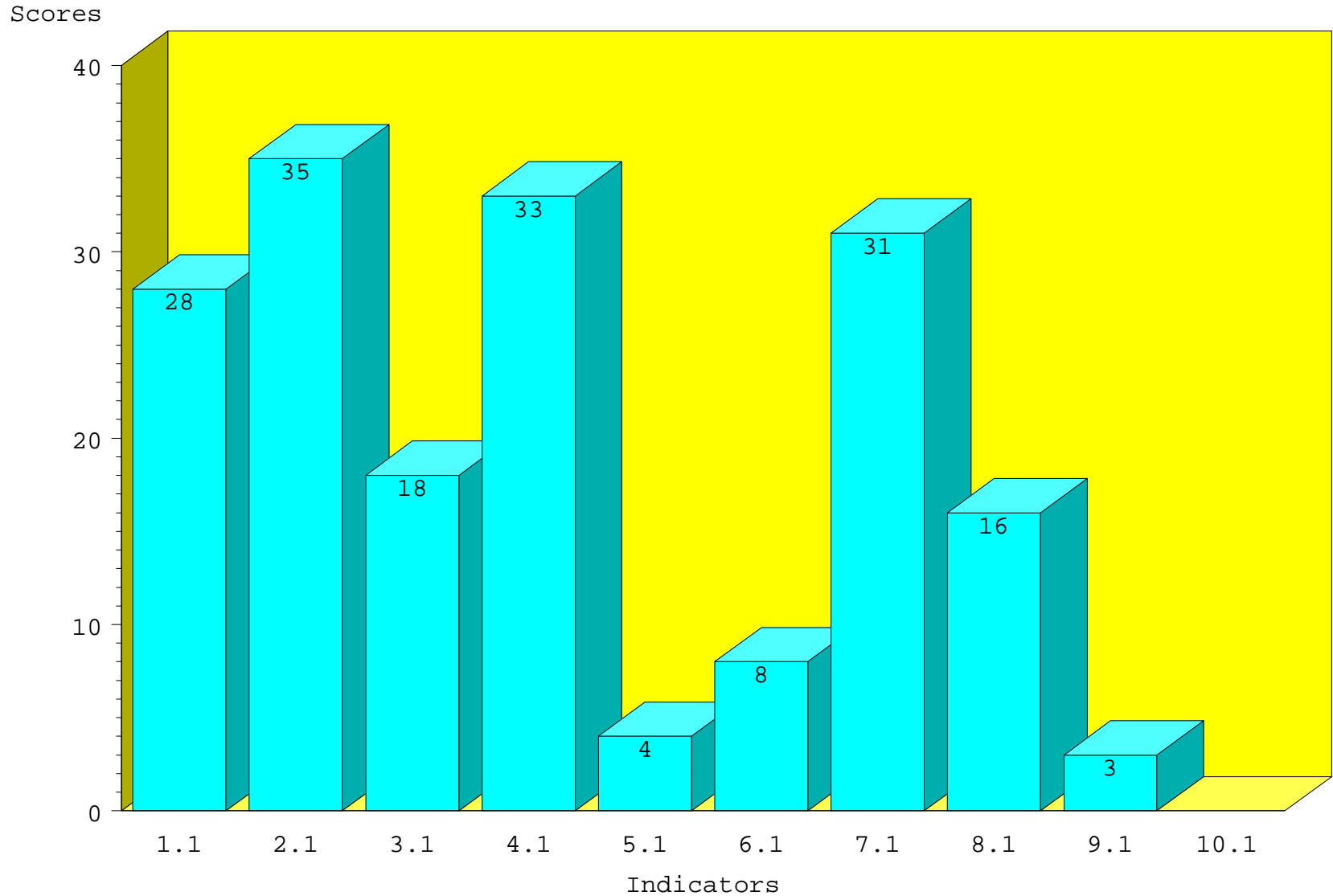


NPHPSP State Public Health System Performance Assessment Instrument

Summary Scores at the Indicator Level

Date Submitted: 22JAN2003

Planning and Implementation(1)

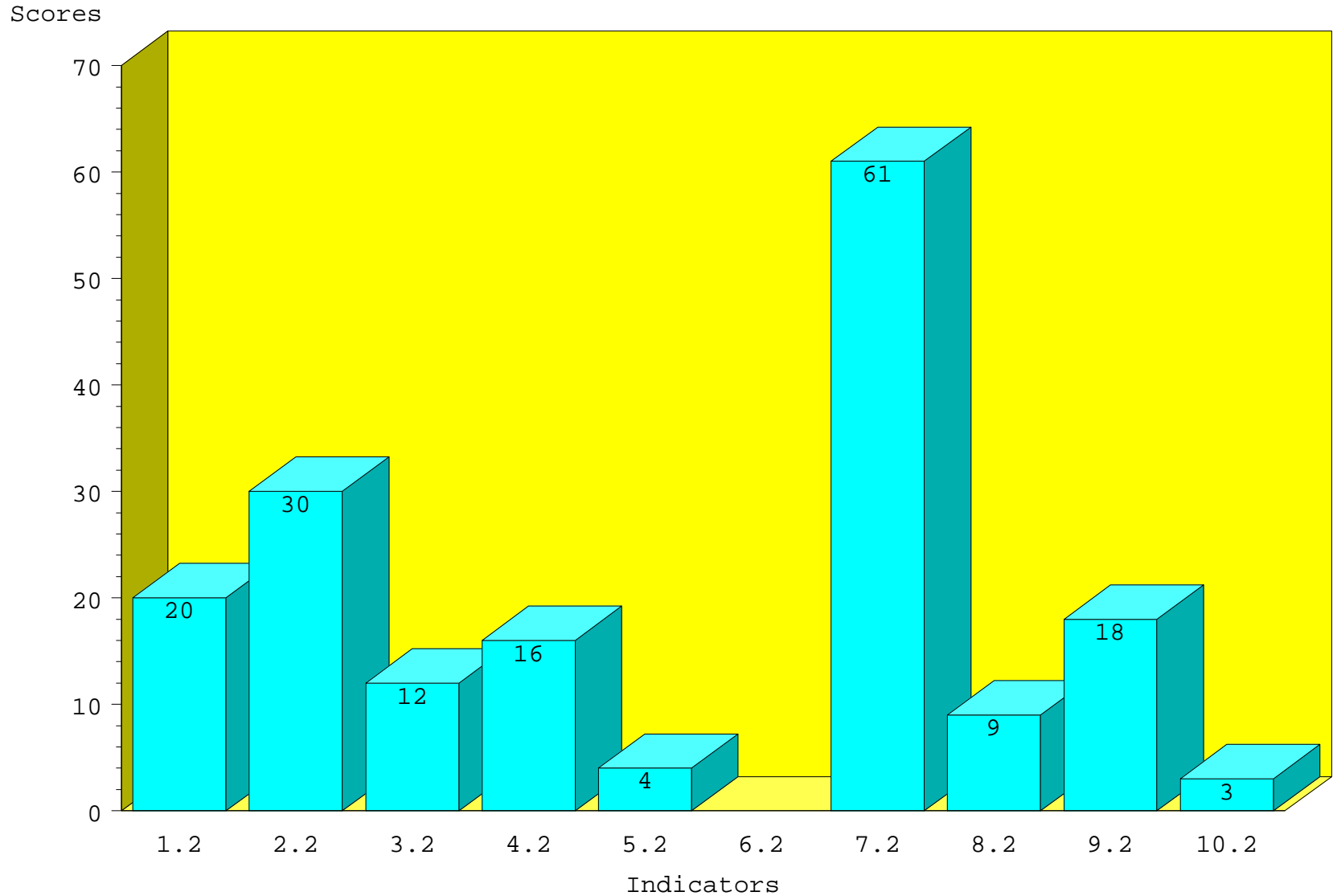


NPHPSP State Public Health System Performance Assessment Instrument

Summary Scores at the Indicator Level

Date Submitted: 22JAN2003

Technical Assistance and Support(2)

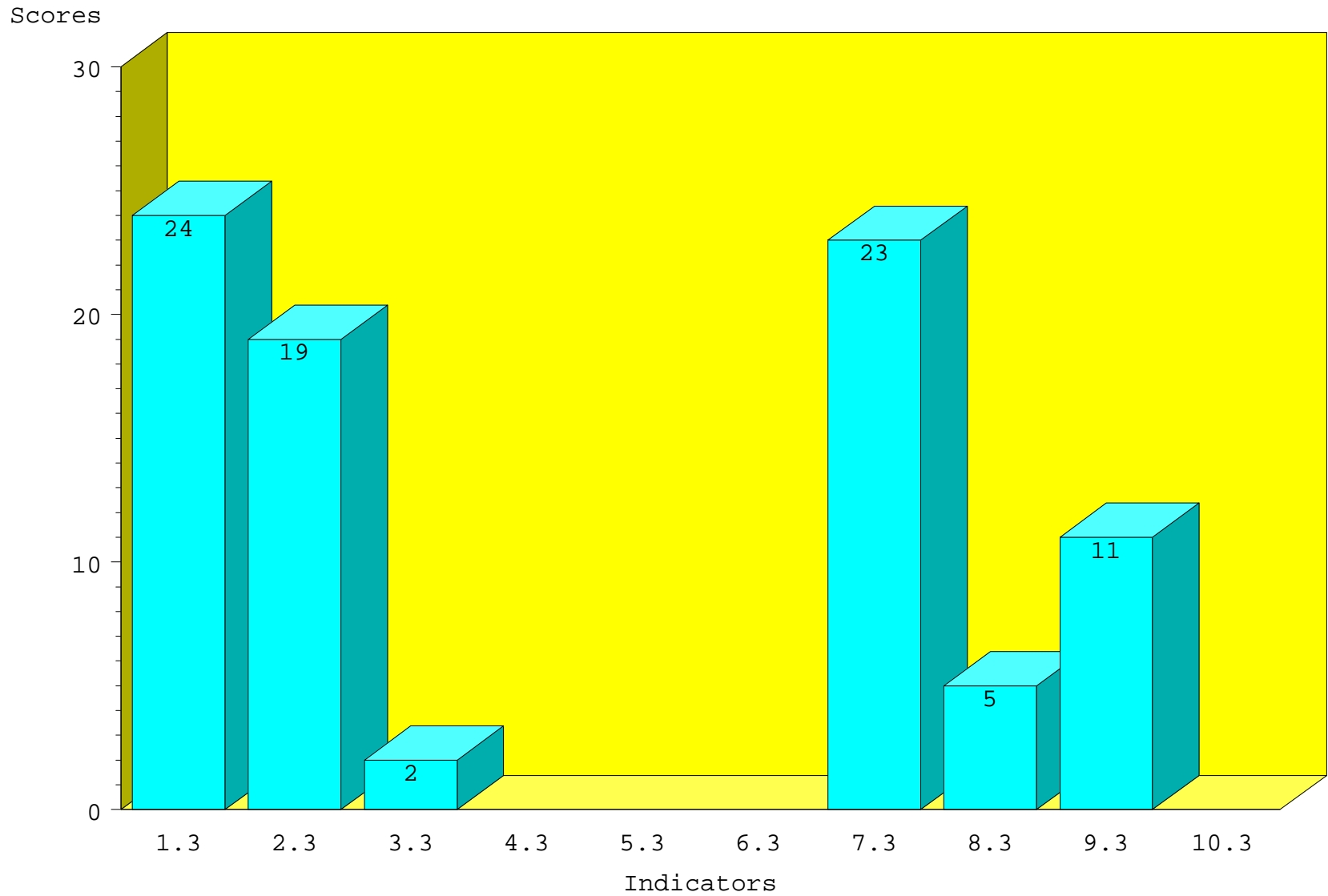


NPHPSP State Public Health System Performance Assessment Instrument

Summary Scores at the Indicator Level

Date Submitted: 22JAN2003

Evaluation and Quality Improvement(3)

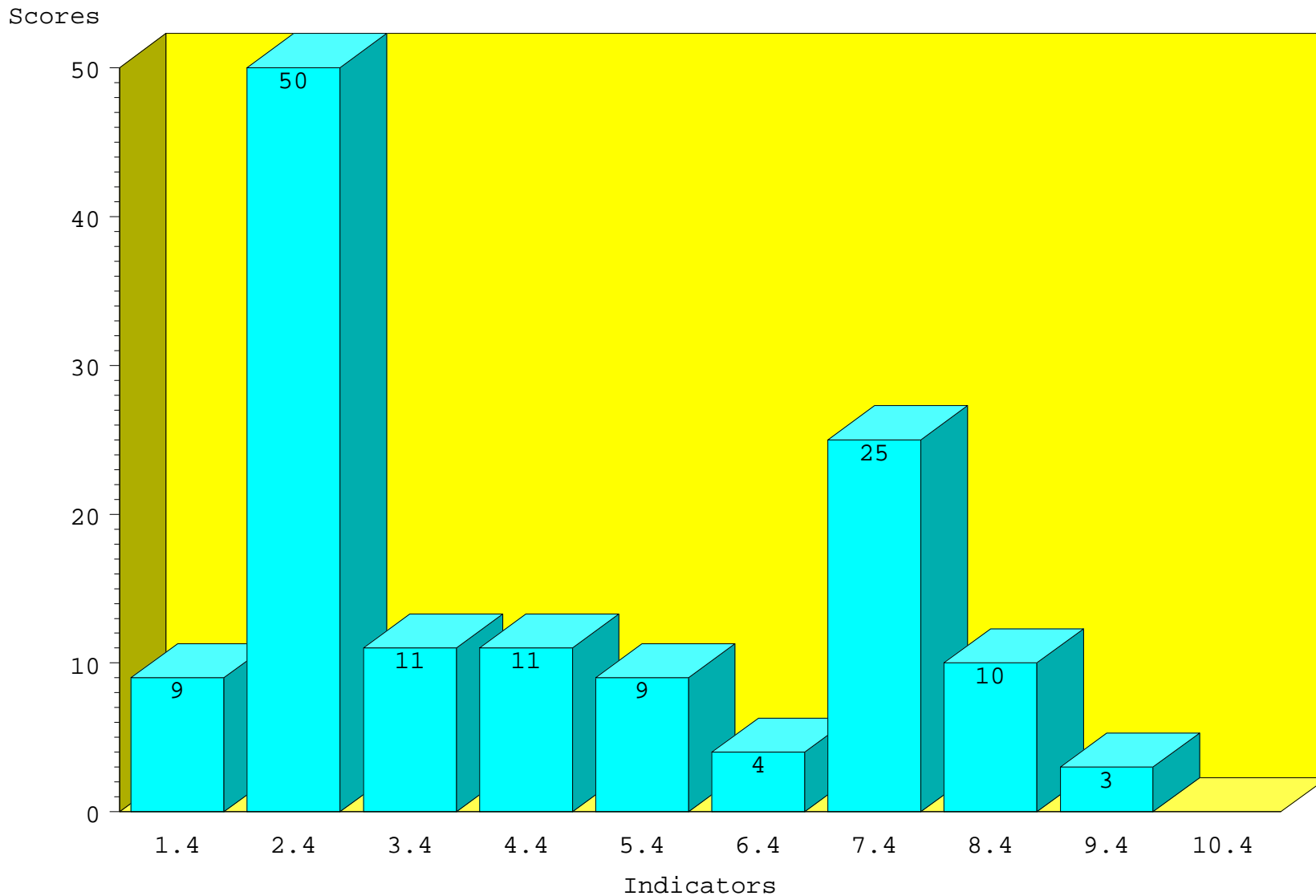


NPHPSP State Public Health System Performance Assessment Instrument

Summary Scores at the Indicator Level

Date Submitted: 22JAN2003

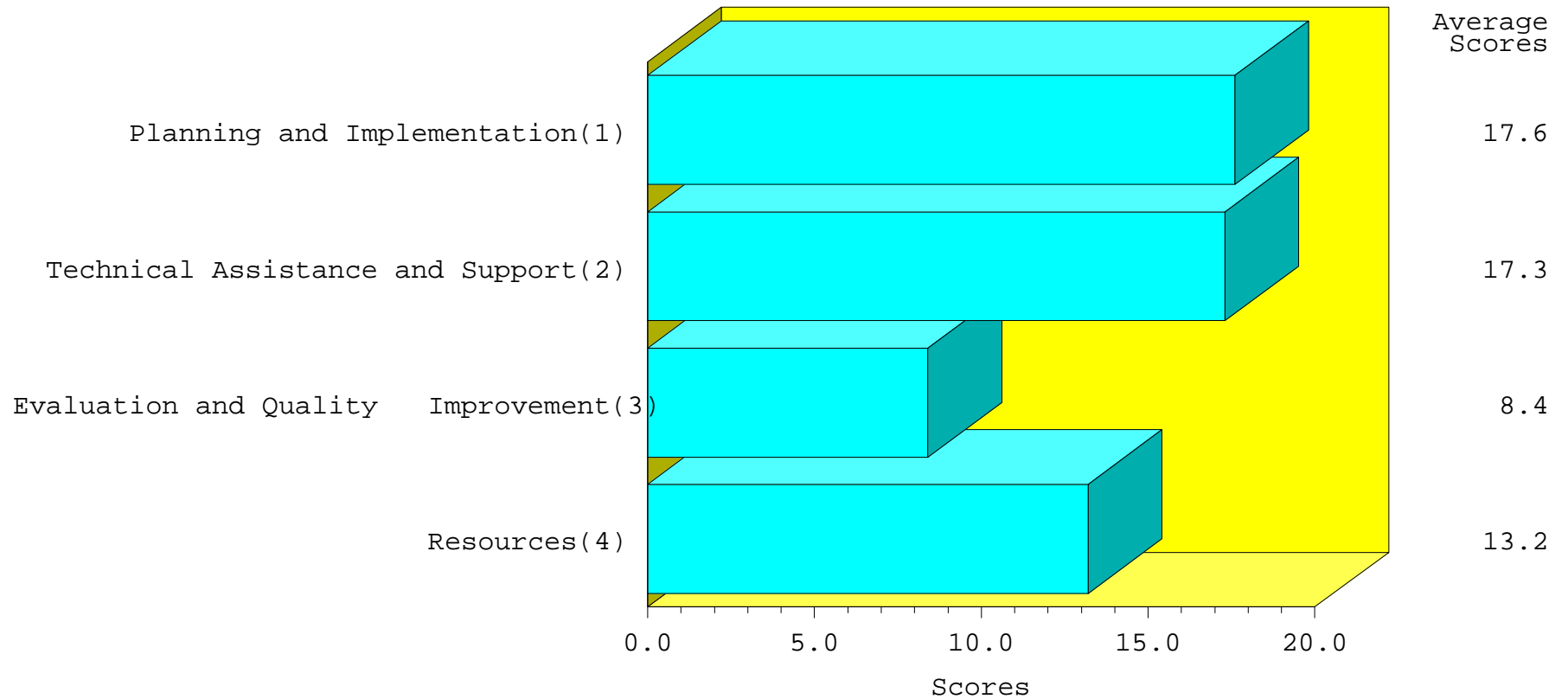
Resources(4)



NPHPSP State Public Health System Performance Assessment Instrument

Average Scores for State Indicators Across Essential Services

Date Submitted: 22JAN2003



NPHPSP State Public Health System Performance Assessment Instrument

Summary of Performance on Model Standards

Date Submitted: 22JAN2003

Essential Public Health Service	Indicator/Model Standard Met	Indicator/Model Standard Substantially Met	Indicator/Model Standard Partially Met	Indicator/Model Standard Not Met
1: Monitor Health Status				1.2 Technical Assistance and Support
				1.3 Evaluation and Quality Improvement
			1.1 Planning and Implementation	1.4 Resources
2: Diagnose and Investigate Health Problems			2.1 Planning and Implementation	2.3 Evaluation and Quality Improvement
			2.2 Technical Assistance and Support	
			2.4 Resources	
3: Inform, Educate, and Empower People				3.1 Planning and Implementation
				3.2 Technical Assistance and Support
				3.3 Evaluation and Quality Improvement
				3.4 Resources
4: Mobilize Partnerships				4.2 Technical Assistance and Support
				4.3 Evaluation and Quality Improvement
			4.1 Planning and Implementation	4.4 Resources
5: Develop Policies and Plans				5.1 Planning and Implementation

Centers for Disease Control and Prevention

Public Health Practice Program Office

Division of Public Health Systems Development and Research

National Public Health Performance Standards Program

1-800-PHPP0-49 or 1-800-747-7649

NPHPSP State Public Health System Performance Assessment Instrument

Summary of Performance on Model Standards

Date Submitted: 22JAN2003

Essential Public Health Service	Indicator/Model Standard Met	Indicator/Model Standard Substantially Met	Indicator/Model Standard Partially Met	Indicator/Model Standard Not Met
				5.2 Technical Assistance and Support
				5.3 Evaluation and Quality Improvement
				5.4 Resources
6: Enforce Laws and Regulations				6.1 Planning and Implementation
				6.2 Technical Assistance and Support
				6.3 Evaluation and Quality Improvement
				6.4 Resources
7: Link People to Needed Personal Health Services				7.3 Evaluation and Quality Improvement
			7.1 Planning and Implementation	7.4 Resources
			7.2 Technical Assistance and Support	
8: Assure a Competent Public and Workforce				8.1 Planning and Implementation
				8.2 Technical Assistance and Support
				8.3 Evaluation and Quality Improvement
				8.4 Resources

Centers for Disease Control and Prevention

Public Health Practice Program Office

Division of Public Health Systems Development and Research

National Public Health Performance Standards Program

1-800-PHPP0-49 or 1-800-747-7649

NPHPS State Public Health System Performance Assessment Instrument

Summary of Performance on Model Standards

Date Submitted: 22JAN2003

Essential Public Health Service	Indicator/Model Standard Met	Indicator/Model Standard Substantially Met	Indicator/Model Standard Partially Met	Indicator/Model Standard Not Met
9: Evaluate Effectiveness, Accessibility and Quality				9.1 Planning and Implementation
				9.2 Technical Assistance and Support
				9.3 Evaluation and Quality Improvement
				9.4 Resources
10: Research for New Insights and Innovative Solutions				10.1 Planning and Implementation
				10.2 Technical Assistance and Support
				10.3 Evaluation and Quality Improvement
				10.4 Resources

Centers for Disease Control and Prevention

Public Health Practice Program Office

Division of Public Health Systems Development and Research

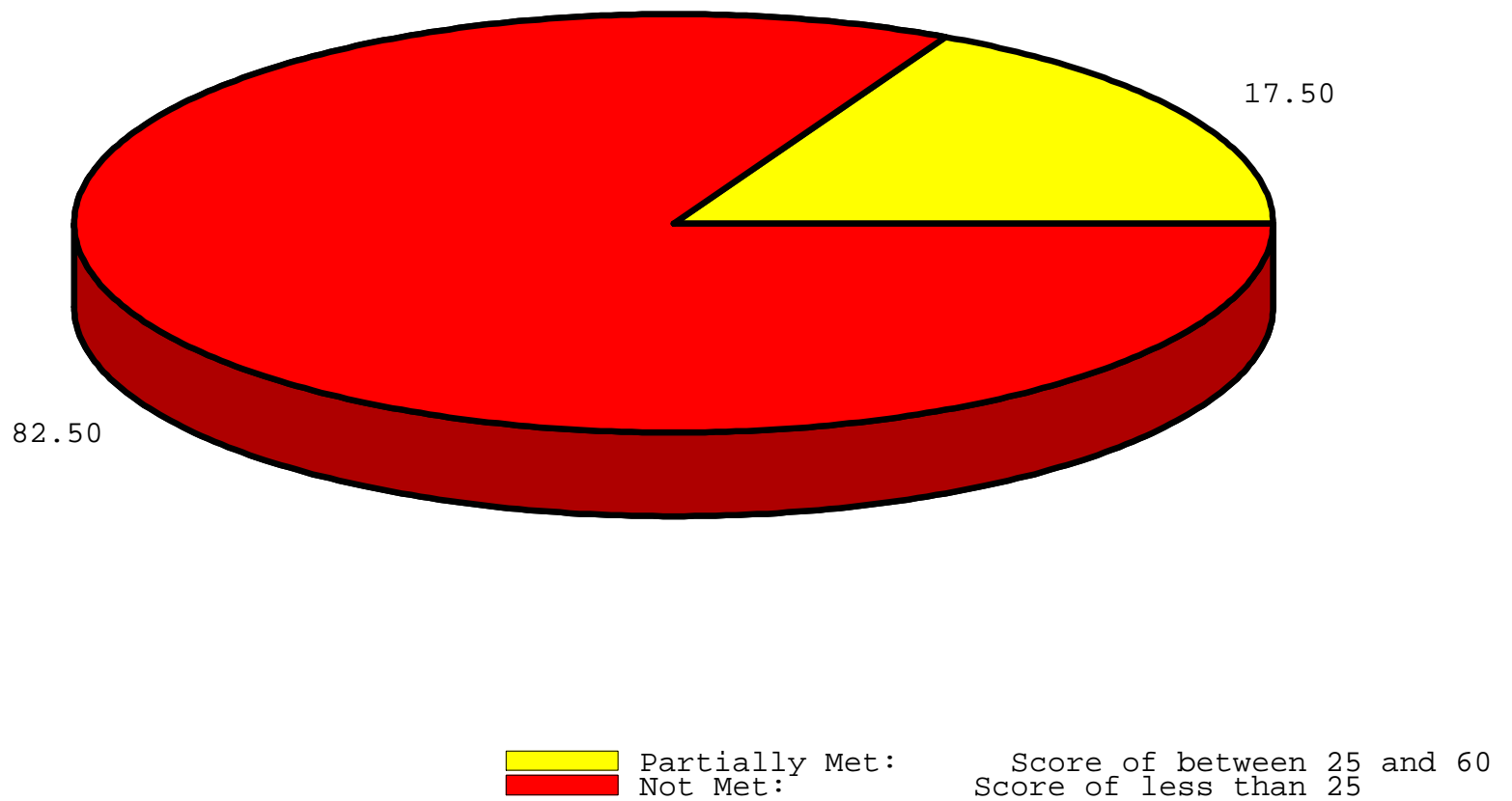
National Public Health Performance Standards Program

1-800-PHPP0-49 or 1-800-747-7649

NPHPSP State Public Health System Performance Assessment Instrument

Summary of Performance on Model Standards

Date Submitted: 22JAN2003



NPHPSP State Public Health System Performance Assessment Instrument

System Performance and Agency Contribution - Summary Question Responses

Date Submitted: 22JAN2003

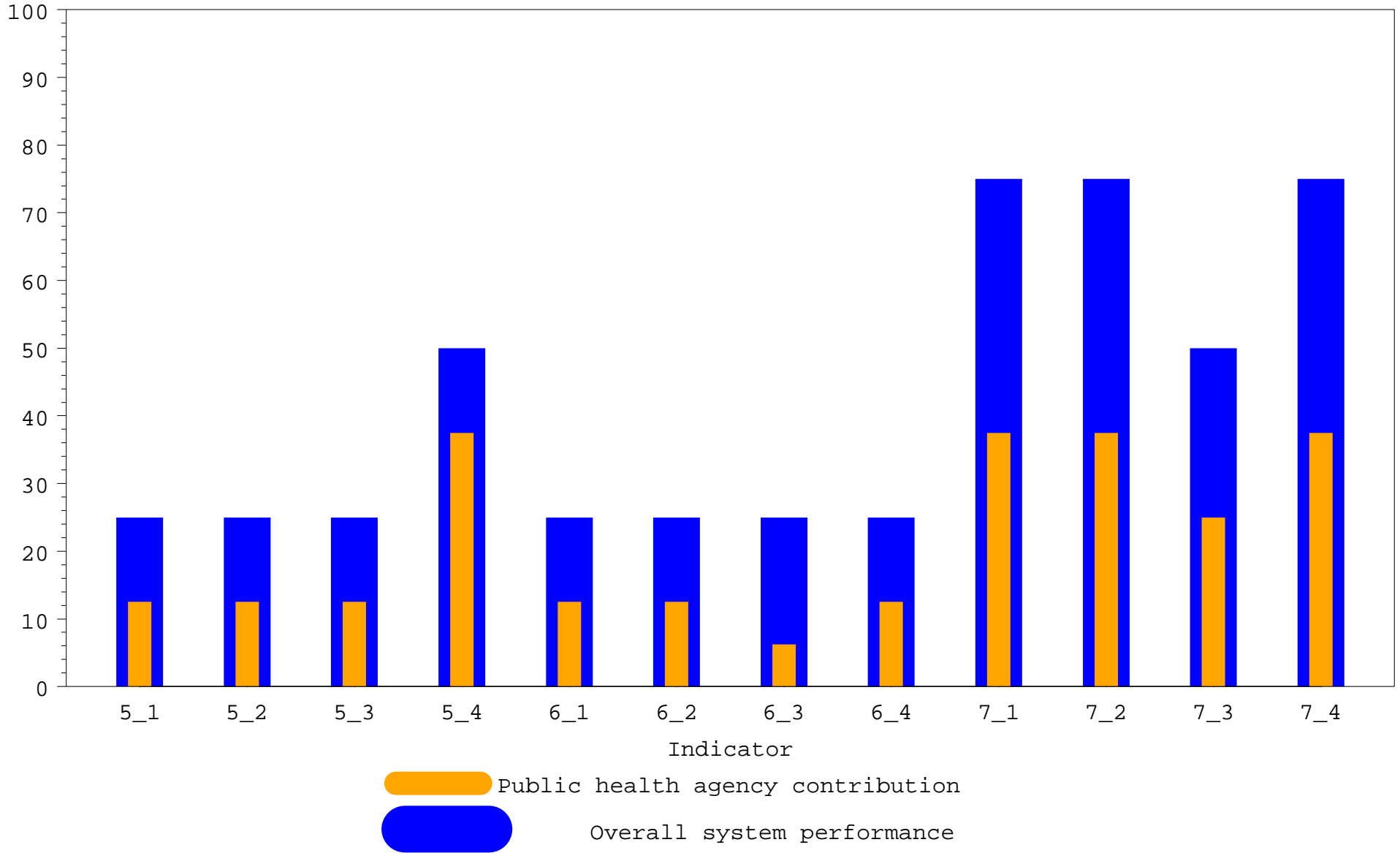


Centers for Disease Control and Prevention
Centers for Disease Control and Prevention
Public Health Practice Program Office
Division of Public Health Systems Development and Research
National Public Health Performance Standards Program
1-800-PHPPO-49 or 1-800-747-7649

NPHPSP State Public Health System Performance Assessment Instrument

System Performance and Agency Contribution - Summary Question Responses

Date Submitted: 22JAN2003

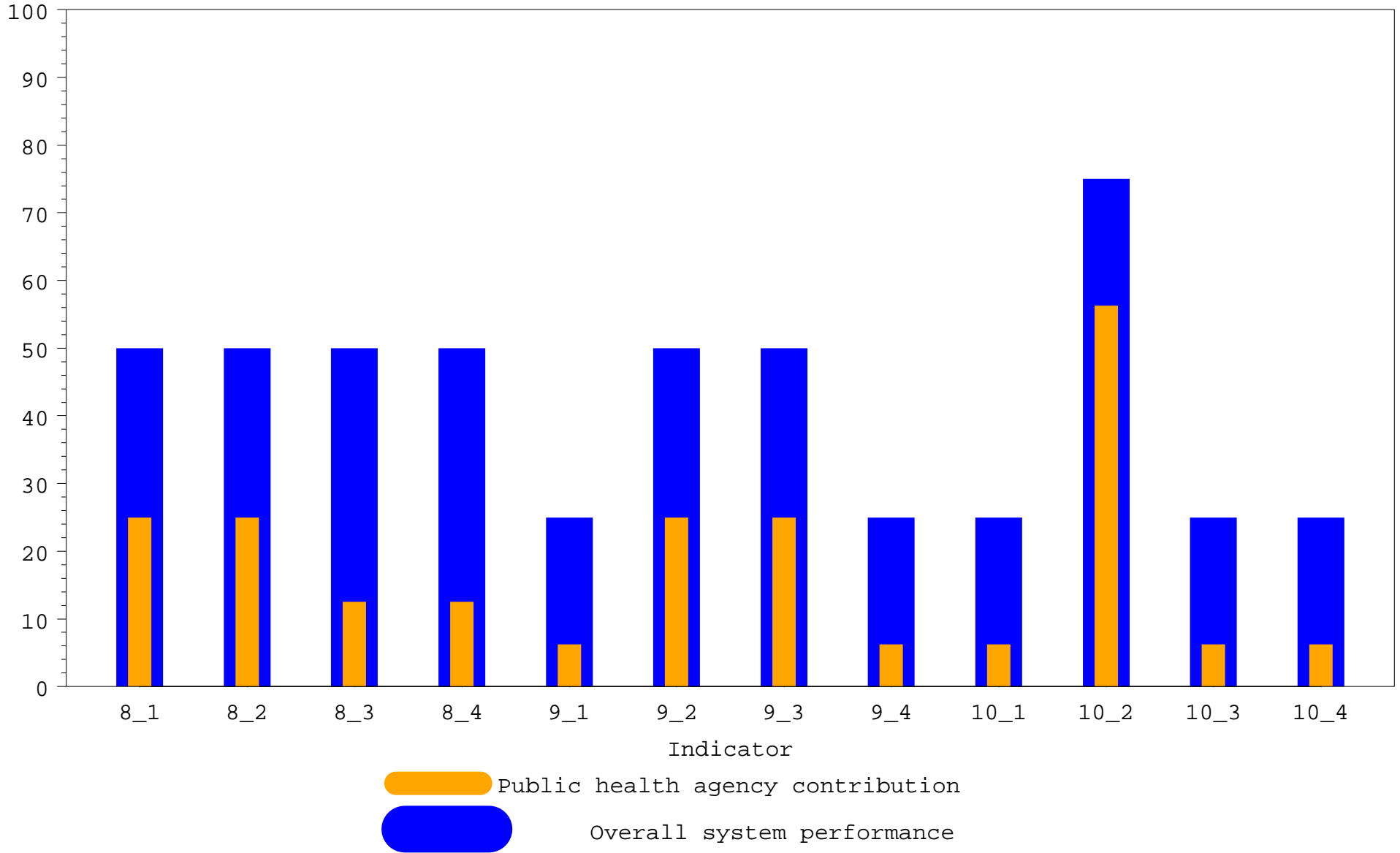


Centers for Disease Control and Prevention
Centers for Disease Control and Prevention
Public Health Practice Program Office
Division of Public Health Systems Development and Research
National Public Health Performance Standards Program
1-800-PHPPO-49 or 1-800-747-7649

NPHPSP State Public Health System Performance Assessment Instrument

System Performance and Agency Contribution - Summary Question Responses

Date Submitted: 22JAN2003



Centers for Disease Control and Prevention
Centers for Disease Control and Prevention
Public Health Practice Program Office
Division of Public Health Systems Development and Research
National Public Health Performance Standards Program
1-800-PHPPO-49 or 1-800-747-7649