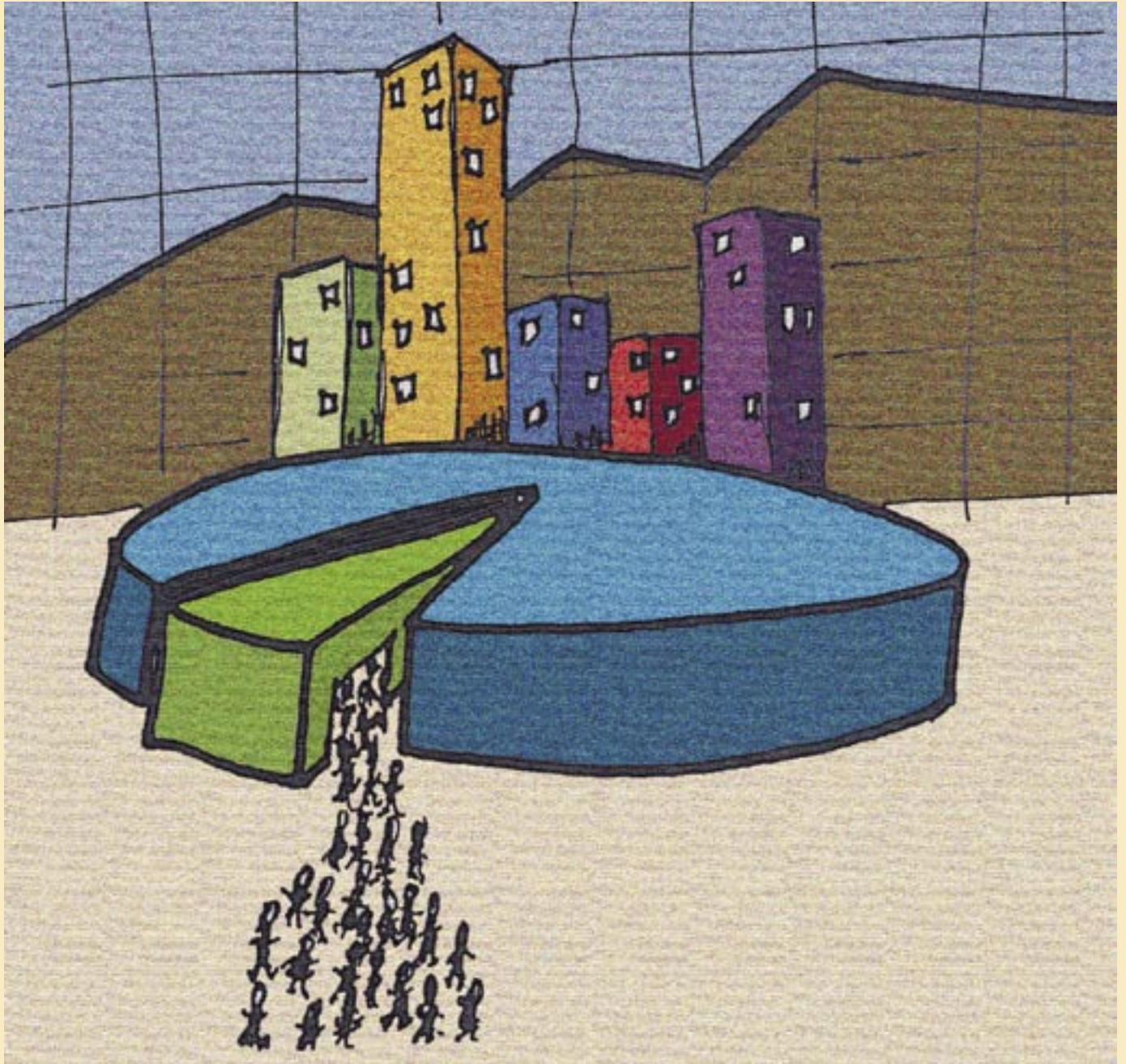




Worker Health Chartbook, 2000



U.S. DEPARTMENT OF HEALTH AND HUMAN SERVICES
Public Health Service
Centers for Disease Control and Prevention
National Institute for Occupational Safety and Health





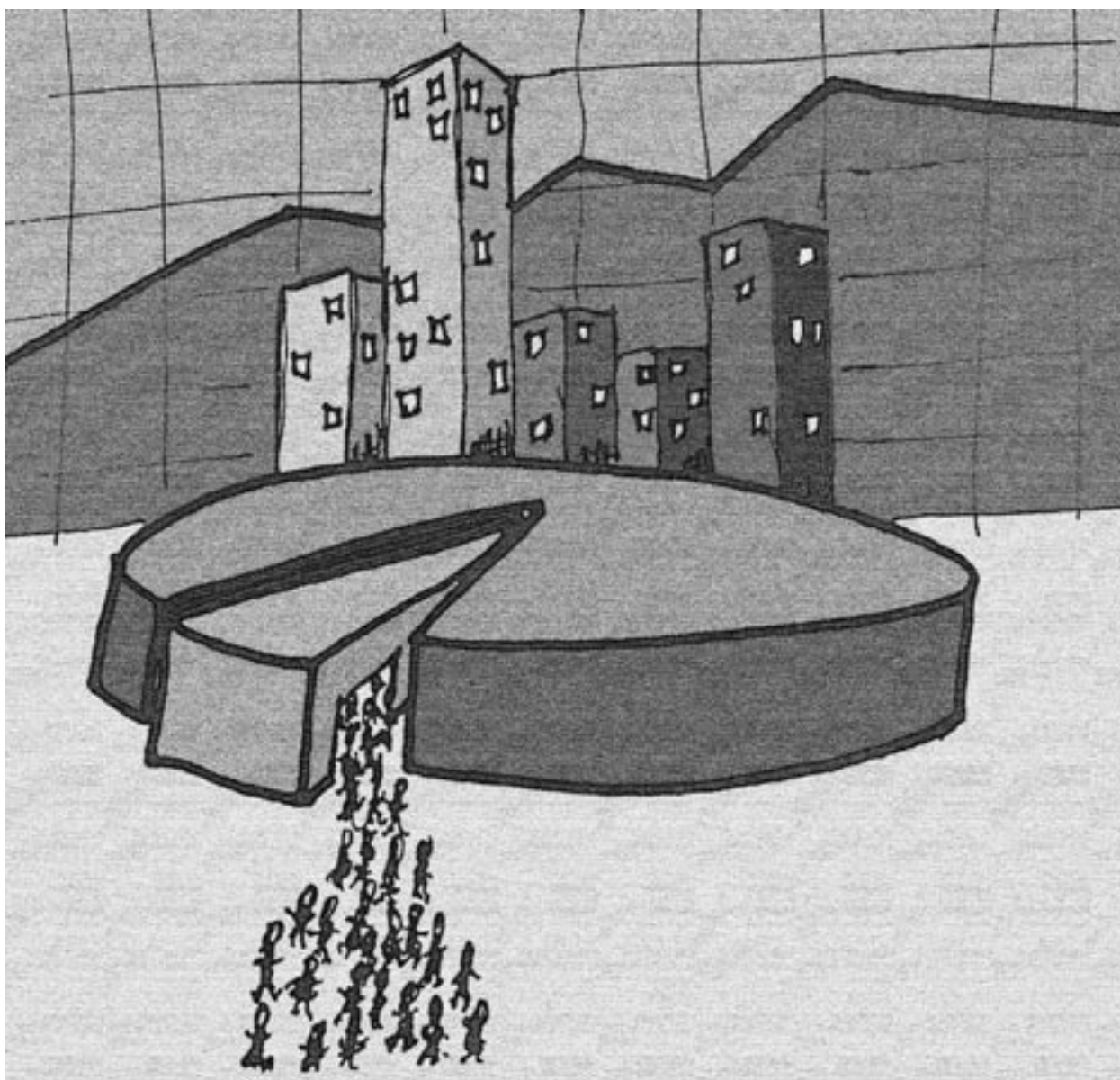
Worker Health Chartbook, 2000

U.S. Department of Health and Human Services

Public Health Service

Centers for Disease Control and Prevention

National Institute for Occupational Safety and Health



ORDERING INFORMATION

To receive documents or more information about occupational safety and health topics, contact the National Institute for Occupational Safety and Health (NIOSH) at

NIOSH—Publications Dissemination
4676 Columbia Parkway
Cincinnati, OH 45226-1998

Telephone: 1-800-35-NIOSH (1-800-356-4674)
Fax: 513-533-8573
E-mail: Pubstaft@cdc.gov

or visit the NIOSH Web site at

www.cdc.gov/niosh

*This document is in the public domain
and may be freely copied or reprinted.*

Disclaimer: Mention of any company or product
does not constitute endorsement by NIOSH

DHHS (NIOSH) Publication Number 2000-127

September 2000

FOREWORD

Surveillance is the cornerstone of prevention: It helps us identify new and emerging problems, track and monitor issues over time, target and evaluate the effectiveness of intervention efforts, and anticipate future needs and concerns. Those who have long struggled with these issues in the occupational setting will share my enthusiasm for this first edition of the *Worker Health Chartbook*. I am grateful to the authors and contributors for accomplishing what has not been accomplished before—bringing together the patchwork of systems that monitor occupational illness and injury into one comprehensive and *comprehensible* guide.

One of the primary goals in compiling the chartbook was to create a resource that could be used by anyone interested in workplace safety and health, including occupational safety and health practitioners, legislators and policy makers, health care providers, educators, researchers, and workers and their employers. In an attempt to reach the widest possible audience, we have made the chartbook available in printed and electronic form.

Several Federal agencies worked together to organize the surveillance data sources required to produce this document. This is an important step toward identifying and filling significant gaps in occupational illness and injury information. The success of this initial effort has provided a framework for increased surveillance coordination between NIOSH and our partners in the future.

The *Worker Health Chartbook* serves NIOSH and the occupational safety and health community well by placing surveillance in the hands of those who work to prevent occupational injuries and illnesses. The forethought and collaborative spirit that made all of this possible are commendable and bode well for future efforts to integrate Federal, State, and private-sector surveillance information.



Linda Rosenstock, M.D., M.P.H.
Director, National Institute for
Occupational Safety and Health

EXECUTIVE SUMMARY

Understanding and preventing occupational injuries and illnesses require focused efforts to identify, quantify, and track both health outcomes and their associated workplace conditions. Occupational safety and health surveillance activities provide the ongoing and systematic collection, analysis, interpretation, and dissemination of data needed for prevention. Current occupational safety and health surveillance data reveal the staggering human and economic losses associated with occupational injuries and illnesses. Much work remains to be done to reduce those losses, despite overall decreases in occupational injuries and illnesses in recent years.

Our ability to survey and assess the state of occupational safety and health has improved over time. However, occupational safety and health surveillance data remain fragmented—collected for different purposes by different organizations using different definitions. We continue to have substantial gaps in surveillance information. Each surveillance system has limitations, particularly those that attempt to quantify occupational illness. Nonetheless, the data provide useful information for targeting and evaluating prevention efforts.

To make these data more accessible, the National Institute for Occupational Safety and Health (NIOSH) has assembled this chartbook, which provides occupational safety and health surveillance information from different sources in a single volume. This initial work focuses on injury and illness outcomes rather than on exposures or hazards. Included are contributions from several Federal agencies. Little information is included on public-sector employees or from State-based surveillance systems. Future editions of the chartbook will target additional data sources to provide a more comprehensive picture of occupational injury and illness for the U.S. workforce.

Trends Over Time

Recent overall decreases in occupational injuries and illnesses are apparent in the incidence rates for total recordable cases of injuries and illnesses in private industry reported by the U.S. Department of Labor in the Survey of Occupational Injuries and Illnesses (SOII). From 1973 to 1997, this rate declined from 11.0 to 7.1 cases per 100 full-time workers. The greatest

change occurred among cases without lost workdays,* which decreased from 7.5 to 3.8 cases per 100 full-time workers over the same period. For 1988–1997, the rate of cases with days away from work declined 40%, but there was a 140% increase in the rate of cases with restricted work activity only.

Occupational injury fatality rates recorded by NIOSH in the National Traumatic Occupational Fatalities Surveillance System (NTOF) decreased substantially (43%) between 1980 and 1995, from 7.5 to 4.3 deaths per 100,000 workers. Injury fatality rates recorded by the U.S. Department of Labor in the Census of Fatal Occupational Injuries (CFOI) declined by 7% from 1992 to 1997.

Losses attributable to occupational illness over time are more difficult to describe. Although efforts have been made to estimate the burden of occupational disease in the United States, no surveillance system describes the magnitude of fatal occupational illnesses other than the pneumoconioses (dust diseases of the lung). These illnesses can be described because they are attributable entirely to occupation. Since 1968, more than 113,000 deaths have occurred with pneumoconiosis diagnosed as the underlying or contributing cause—mostly coal workers' pneumoconiosis (CWP). Deaths with CWP have decreased in recent years, whereas deaths with asbestosis increased from 1968 to 1996 (from fewer than 100 to nearly 1,200).

Recent Data

Fatal Occupational Injuries

About 17 workers were fatally injured on the job each day during 1997. Of the 6,238 fatal occupational injuries that year, 42% (2,605) were associated with transportation, excluding incidents that occurred while traveling to or from work. Most motor-vehicle-related fatalities (nearly 1,400) resulted from highway crashes. Homicides were the second leading cause of death, accounting for 14% of the total. The leading causes of death varied by sex, with motor vehicles being the leading cause for men and homicide the leading cause for women. Workers aged 65 and older had the highest rates of occupational injury death. Workplaces with 1 to 10 workers had the highest fatality rate (8.6 deaths per 100,000 workers), and workplaces with 100 or more workers had the lowest fatality rate (2 deaths per 100,000 workers). The highest numbers of fatalities occurred in construction, transportation

*Lost-workday cases include cases with days away from work and cases with restricted work activity only (i.e., cases in which workers report to their jobs for limited duty).

and public utilities, and agriculture, forestry, and fishing industries. The highest fatality rates occurred in mining, construction, and agriculture, forestry, and fishing. The fatality rate in mining was more than five times the national average for all industries.

Fatal Occupational Illnesses

Deaths from diseases other than the pneumoconioses are difficult to attribute to the workplace for several reasons. For example, many diseases appear the same with or without occupational exposures; and some have latency periods of many years between exposure and disease development. Furthermore, health care professionals may not identify or consider occupational risk factors when making a diagnosis. Statistically elevated death rates for several diseases have been observed in a variety of occupations, but the degree to which these elevated rates can be directly associated with the workplace is not clear. However, these studies help set priorities for intervention and prevention as well as for future investigation. For example, death rates for persons with pneumoconiosis as an underlying or contributing cause varied by occupation and type of pneumoconiosis. Mining machine operators had high mortality rates from CWP and other/unspecified pneumoconiosis, and insulation workers and related occupations had high mortality rates from asbestosis. Various metalworking, plastic processing, and mining occupations had high mortality rates from silicosis, and textile machine operators and repairers had high mortality rates from byssinosis.

Nonfatal Injuries

Approximately 5.7 million injuries were reported in SOII in 1997. Those injuries represent 93% of the 6.1 million injuries and illnesses documented by employer records in the private sector. The nonfatal injury rate declined steadily in the 1990s. Agriculture, construction, manufacturing, and transportation reported rates above the average of 6.6 per 100 full-time workers for all industries. Sprains, strains, and tears accounted for a disproportionately large share of cases with days away from work (nearly 800,000 cases in 1997). Nearly half of those cases involved the back. Overexertion accounted for more than 60% of back injuries.

According to the National Electronic Injury Surveillance System (NEISS), occupational injuries treated in hospital emergency departments numbered 3.6 million in 1998. Rates for those injuries were highest among men and workers under age 25. Lacerations, punctures, sprains and strains, contusions, abrasions, and hematomas accounted for 70% of all injuries treated in emergency departments.

Nonfatal Illnesses

Nearly 430,000 nonfatal occupational illnesses were recorded in SOII in 1997. About 60% of those illnesses occurred in the manufacturing sector. The illness incidence rate for 1997 was 49.8 cases per 10,000 full-time workers. Illness incidence rates varied by industry, with the highest rate occurring in manufacturing. The rates in private industry increased with establishment size, with the highest rate occurring in establishments employing 1,000 or more workers.

Disorders related to repeated trauma (including carpal tunnel syndrome [CTS], tendinitis, and noise-induced hearing loss) accounted for 64% of the occupational illnesses recorded in SOII in 1997. CTS accounted for more than 29,000 cases with days away from work in 1997. Half of the CTS cases required 25 or more days away from work. Most noise-induced hearing loss cases with days away from work occurred in manufacturing.

Skin diseases or disorders represented 13% (approximately 58,000 cases) of work-related illnesses recorded in SOII in 1997. Dermatitis, a subcategory of skin diseases or disorders, resulted in more than 6,500 cases with time away from work. Half of these cases required 3 or more days away from work.

SOII relies on employer records to identify work-related injuries and illnesses. Illnesses reported to SOII are those most easily and directly related to workplace activity (e.g., contact dermatitis). Diseases that develop over a long period (e.g., cancers) or that have workplace associations that are not immediately obvious are overwhelmingly underrecorded in SOII. Consequently, other approaches and data sources have been developed to track occupational illnesses in a more active way. For example, the Sentinel Event Notification System for Occupational Risks (SENSOR) establishes a variety of simultaneous data sources to increase the chances of identifying a work-related illness in State surveillance systems. The California SENSOR program has specifically targeted surveillance of occupational CTS. Of the CTS cases identified in that program through physician first reports filed with the State compensation system in 1998, 30% occurred in the services industry and 17% occurred in manufacturing. Currently, the Michigan SENSOR program monitors noise-induced hearing loss. Manufacturing accounted for 51% of the noise-induced hearing loss cases reported by clinicians in 1998. Seven States have had active SENSOR programs for silicosis surveillance. From 1993 to 1995, 75% of silicosis cases occurred in manufacturing. In addition, four States have had active SENSOR programs for occupational asthma surveillance. The industry divisions

accounting for the most cases from 1993 to 1995 were manufacturing (42%) and services (31%).

Other public and private programs describe toxic exposures, pesticide poisonings, X-rays of working underground coal miners, infections in health care workers, and self-reported respiratory diseases among non-smokers by industry. For example, the Adult Blood Lead Epidemiology and Surveillance Program (ABLES) monitors elevated blood lead levels (BLLs) in persons aged 16 and older. In 1998, a total of 10,501 adults in 25 States had high BLLs (25 µg/dL or greater).

Conclusions

The data provided in this chartbook indicate encouraging decreases in the frequency of some occupational fatalities, injuries, and illnesses. Surveillance has helped identify new and emerging problems and trends such as occupational musculoskeletal disorders and asthma. Although our ability to monitor these outcomes has improved over time, this chartbook illustrates the continued fragmentation of occupational health surveillance systems as well as the paucity (or even total absence) of data for certain occupational disorders and groups. The data suggest a compelling need to improve, expand, and coordinate occupational safety and health surveillance activities to develop and augment the data needed to guide illness and injury prevention efforts. Working with government and nongovernment partners, NIOSH will continue efforts to enhance occupational health surveillance in the coming years.

CONTENTS

FOREWORD	iii
EXECUTIVE SUMMARY	iv
ABBREVIATIONS	xii
ACKNOWLEDGMENTS	xv
1 INTRODUCTION	3
Chartbook Organization and Data Systems	4
Demographics	6
Overview of Occupational Injuries and Illnesses	12
The Burden of Occupational Injuries and Illnesses	12
Fatal Injury	12
Fatal Illness	14
Nonfatal Injury and Illness Combined	15
Characteristics of Workers and of Injuries and Illnesses Involving Days away from Work	21
Workers	21
Injuries and Illnesses	23
2 FATAL INJURY	29
The Burden of Fatal Occupational Injuries	29
Fatal Injuries by Age and Race	31
Fatal Injuries by Leading Cause.....	32
Fatal Injuries by Industry and Occupation	34
Fatal Injuries by State.....	37
Fatal Injuries by Establishment Size	40
Special Topics in Fatal Occupational Injury	41
Fatal Injuries among Truck Drivers	41
Homicides	43
Fatal Falls.....	45
Fire Fighter Fatalities.....	47
3 FATAL ILLNESS	53
Pneumoconiosis.....	53
Pneumoconiosis Deaths by State.....	56
Pneumoconiosis Deaths by Sex and Race	56
Pneumoconiosis Deaths by Occupation	60
Malignant Pleural Neoplasm	63
Hypersensitivity Pneumonitis	66
PMRs for Selected Occupations and Causes of Death	69

4 NONFATAL INJURY 89

- Nonfatal Occupational Injuries by Industry and Cases with Lost Workdays 93
- Characteristics of Injury Cases with Days away from Work 97
 - Sprain, Strain, and Tear Cases with Days away from Work, 1997..... 98
 - Back, Spine, or Spinal Cord Cases with Days away from Work, 1997 100
 - Bruise and Contusion Cases with Days away from Work, 1997 102
 - Cut and Laceration Cases with Days away from Work, 1997 104
 - Fracture Cases with Days away from Work, 1997 106
 - Heat Burn and Scald Cases with Days away from Work, 1997..... 108
 - Amputation Cases with Days away from Work, 1997 110

5 NONFATAL ILLNESS 115

- Incidence of Occupational Illness in Private Industry 116
- Repeated Trauma Disorders 118
 - Carpal Tunnel Syndrome 119
 - Cases Recorded by SOII..... 119
 - Cases Identified by SENSOR..... 121
 - Tendinitis 123
- Noise-Induced Hearing Loss..... 124
- Skin Diseases or Disorders 127
- Respiratory Disorders 129
 - Dust Diseases of the Lungs 129
 - Coal Workers’ Pneumoconiosis 130
 - Silicosis 132
 - Respiratory Disorders Attributable to Toxic Agents..... 134
 - Asthma and Chronic Obstructive Pulmonary Disease..... 135
 - NHANES III 135
 - SENSOR 138
- Poisoning and Toxicity..... 141
 - Poisoning..... 141
 - Lead Toxicity 142
 - Pesticide and Insecticide Toxicity 144
- Infections in Health Care Workers..... 148
 - Consequences of Bloodborne Exposures 151
 - Hepatitis B Virus 151
 - Hepatitis C Virus 152
 - Human Immunodeficiency Virus 153
 - Tuberculosis (TB) 154
- Physical Agents..... 155
- Anxiety, Stress, and Neurotic Disorders 156
- All Other Nonfatal Occupational Illnesses..... 158

6 FOCUS ON MINING 161

- Fatal Injuries..... 161
 - Historical Perspective..... 161
 - Fatal Injuries during 1988–1997..... 162
- Lost-Workday Injuries 172

REFERENCES 183

APPENDIX A: SURVEILLANCE SYSTEM DESCRIPTIONS..... 191

- Overview 191
- Bureau of Labor Statistics (BLS) of the U.S. Department of Labor 191
 - Current Population Survey (CPS) 191
 - Survey of Occupational Injuries and Illnesses (SOII) 197
 - Census of Fatal Occupational Injuries (CFOI)..... 199
- Centers For Disease Control and Prevention (CDC), U.S. Department of Health and Human Services 201
 - National Institute for Occupational Safety and Health (NIOSH) 201
 - National Electronic Injury Surveillance System (NEISS) 202
 - National Occupational Mortality Surveillance System (NOMS) 203
 - National Surveillance System for Pneumoconiosis Mortality (NSSPM)..... 205
 - Coal Workers’ X-Ray Surveillance Program (CWXSP) 205
 - National Traumatic Occupational Fatalities Surveillance System (NTOF) 207
 - Sentinel Event Notification System for Occupational Risk (SENSOR) 208
 - Adult Blood Lead Epidemiology and Surveillance Program (ABLES) 210
 - Mining Injury and Employment Statistics..... 211
 - National Center for Health Statistics (NCHS) 215
 - National Hospital Ambulatory Medical Care Survey (NHAMCS) 215
 - National Health and Nutrition Examination Survey (NHANES) 216
 - Multiple-Cause-of-Death Data..... 217
 - National Center for Infectious Diseases (NCID) 217
 - National Surveillance System for Hospital Health Care Workers (NaSH)..... 218
 - Sentinel Counties Study of Acute Viral Hepatitis 219
 - Viral Hepatitis Surveillance Program (VHSP) 220
 - National Center for HIV, STD, and TB Prevention (NCHSTP) 220
 - Surveillance of Health Care Workers with HIV/AIDS..... 221
 - Surveillance for Tuberculosis Infection in Health Care Workers (staffTRAK–TB) 222
- References Cited..... 223
- Bibliography..... 227
 - Bureau of Labor Statistics 227
 - National Electronic Injury Surveillance System (NEISS)..... 228
 - National Occupational Mortality Surveillance System (NOMS) 229
 - Adult Blood Lead Epidemiology and Surveillance Program..... 230
 - Multiple-Cause-of-Death Data 230

APPENDIX B: DESCRIPTION OF INDUSTRY AND OCCUPATION CODING SYSTEMS..... 233

- Overview 233
- North American Industry Classification System/Standard Industrial Classification (NAICS/SIC) 233
- Standard Occupational Classification (SOC) 237
- Bureau of the Census..... 240
- References Cited..... 242

GLOSSARY 245

ABBREVIATIONS

- AAPCC.....American Association of Poison Control Centers
- ABLESAdult Blood Lead Epidemiology and Surveillance Program
- AIDS.....acquired immune deficiency syndrome
- BLL.....blood lead level
- BLSBureau of Labor Statistics
- CDC.....Centers for Disease Control and Prevention
- CDPR.....California Department of Pesticide Regulation
- CFOICensus of Fatal Occupational Injuries
- CFR*Code of Federal Regulations*
- CIconfidence interval
- COPDchronic obstructive pulmonary disease
- CPS.....Current Population Survey
- CPSC.....Consumer Product Safety Commission
- CSTE.....Council of State and Territorial Epidemiologists
- CTScarpal tunnel syndrome
- CWPcoal workers’ pneumoconiosis
- CWXSPCoal Workers’ X-Ray Surveillance Program
- dLdeciliter(s)
- DHHSU.S. Department of Health and Human Services
- DNA.....deoxyribonucleic acid
- ECPCU.S. Economic Classification Policy Committee
- EPA.....U.S. Environmental Protection Agency
- FACE.....Fatality Assessment and Control Evaluation
- HARSHIV/AIDS Reporting System
- HIVhuman immunodeficiency virus
- ICD–8International Classification of Diseases, Eighth Revision (World Health Organization)
- ICD–9International Classification of Diseases, Ninth Revision (World Health Organization)
- IHD.....ischemic heart disease
- ILO.....International Labour Organization or Office
- ITCIC.....Interagency Technical Committee on Industrial Classification
- MSHAMine Safety and Health Administration

- NAICS.....North American Industry Classification System
- NAMCSNational Ambulatory Medical Care Survey
- NaSH.....National Surveillance System for Hospital Health Care
Workers
- NCHSNational Center for Health Statistics
- NCHSTP.....National Center for HIV, STD, and TB Prevention
- NCINational Cancer Institute
- NCIDNational Center for Infectious Diseases
- n.e.c.not elsewhere classified
- NEISS.....National Electronic Injury Surveillance System
- NFPA.....National Fire Protection Association
- NHAMCSNational Hospital Ambulatory Medical Care Survey
- NHANESNational Health and Nutrition Examination Survey
- NHANES IIIThird National Health and Nutrition Examination
Survey
- NOICCNational Occupational Information Coordinating
Committee
- NIOSH.....National Institute for Occupational Safety and Health
- NNISNational Nosocomial Infections Surveillance System
- NOMS.....National Occupational Mortality Surveillance System
- n.o.s.not otherwise specified
- NTOF.....National Traumatic Occupational Fatalities
Surveillance System
- NSSPM.....National Surveillance System for Pneumoconiosis
Mortality
- OMBOffice of Management and Budget
- OSHA.....Occupational Safety and Health Administration
- PESTPesticide Exposure Surveillance in Texas Program
- PMR.....proportionate mortality ratio
- RADSreactive airways dysfunction syndrome
- SENSORSentinel Event Notification System for Occupational
Risk
- SICstandard industrial classification
- SOC.....standard occupational classification
- SMRstandardized mortality ratio
- SOII.....Survey of Occupational Injuries and Illnesses
- staff*TRAK–TB...Surveillance for Tuberculosis Infection in Health Care
Workers
- STD.....sexually transmitted disease
- SUDAANSurvey Data Analysis

ABBREVIATIONS

TB	tuberculosis
TESS.....	Toxic Exposure Surveillance System
VHSP	Viral Hepatitis Surveillance Program
WHO	World Health Organization
WoRLD	<i>Work-Related Lung Disease Surveillance Report 1999</i>
µg.....	microgram(s)

ACKNOWLEDGMENTS

This document was prepared by the staff of the National Institute for Occupational Safety and Health (NIOSH). All contributors are affiliated with NIOSH unless otherwise indicated. We extend special thanks to our technical reviewers for their constructive comments and suggestions.

Editors

Roger R. Rosa, Ph.D.
 Michael J. Hodgson, M.D.
 R. Alan Lunsford, Ph.D.
 E. Lynn Jenkins, M.A.
 Kathleen Rest, Ph.D.

Document Design

David Peabody, Synectics for Management Decisions, Inc.
 Suzanne Meadows Hogan, M.A.
 Chris Cromwell, Synectics for Management Decisions, Inc.
 Toni Garrison, Synectics for Management Decisions, Inc.

Contributors

Toni Alterman, Ph.D.
 Ricki Althouse, M.S.
 Ki Moon Bang, Ph.D.
 Margot Barnett, M.S., Strategic Options Consulting
 Jerome M. Blondell, Ph.D., M.P.H., U.S. Environmental
 Protection Agency
 Winifred L. Boal, Ph.D.
 Richard Braddee, M.S.
 Carol Burnett, M.S.
 Geoffery Calvert, M.D., M.P.H.
 Scott Campbell, National Center for Infectious Diseases
 Denise M. Cardo, M.D., National Center for Infectious Diseases
 Robert Castellán, M.D., M.P.H.
 Virgil Casini
 Janice Devine, M.S., Bureau of Labor Statistics
 Ann N. Do, M.D., National Center for HIV, STD, and
 TB Prevention
 Barbara Fotta, M.S.
 Jennifer Flattery, M.P.H., California Department of
 Health Services
 Janie L. Gittleman, Ph.D., M.R.P.
 Robert Harrison, M.D., M.P.H., California Department of
 Health Services
 Dan Hecker, M.S., Bureau of Labor Statistics

Steven Hipple, M.S., Bureau of Labor Statistics
Janice Huy, M.S.
Larry Jackson, Ph.D.
Angela Booth Jones, M.S.
Larry Layne, M.A.
Suzanne Marsh
Elizabeth Marshall, M.S., M.P.H., New York State
Department of Health
Linda McCaig, M.P.H., National Center for Health Statistics
Louise N. Mehler, M.D., California Environmental
Protection Agency
Teri Palermo
Adelisa L. Panlilio, M.D., M.P.H., National Center for
Infectious Diseases
Audrey Podlesny
Mary Jo Reilly, M.S., Michigan Department of Public
Health, Michigan State University
Robert Roscoe, M.S.
Kenneth Sacks, Ph.D., M.B.A.
Lee Sanderson, Ph.D.
John Sestito, J.D.
Jackilen Shannon, Ph.D., Texas Department of Health
Rosemary Sokas, M.D., M.O.H.
Lisa Thomas
Catherine Thomsen, M.P.H., Oregon Health Division
James Walker, Ph.D.
John M. Wood, M.S.
William Weber, M.S., Bureau of Labor Statistics
Ian T. Williams, Ph.D., M.S., National Center for
Infectious Diseases

Technical Reviewers

Heinz Ahlers, J.D.
Letitia Davis, Sc.D., Massachusetts Department of Health
Rick Ehrenberg, M.D., M.P.H.
William Eschenbacher, M.D.
Larry Grayson, Ph.D.
William Halperin, M.D., M.P.H.
Joseph Hurrell, Ph.D.
Jeff Kohler, Ph.D.
Gail McConnell, V.M.D.
Kenneth Rosenman, M.D., Michigan State University
Mitchell Singal, M.D., M.P.H.
Nancy Stout, Ed.D.
Gregory Wagner, M.D.
Carol Wilkinson, M.D., IBM Corporation

Editorial and Production Support

Vanessa Becks
Shirley Carr
Susan Feldmann
Lawrence Foster
Anne C. Hamilton
Marie Haring-Sweeney, Ph.D.
Susan Kaelin
Barbara Landreth
Charlene Maloney
Lucy Schoolfield
Michelle Thompson
Kristina Wasmund
Jane Weber, M.Ed.
Wendy Wippel, M.S.