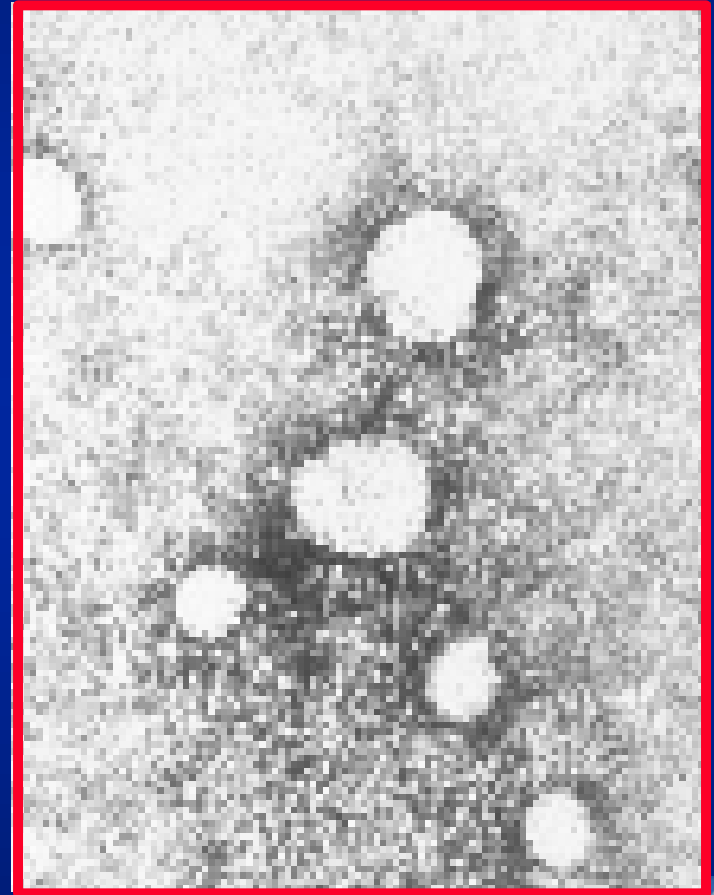
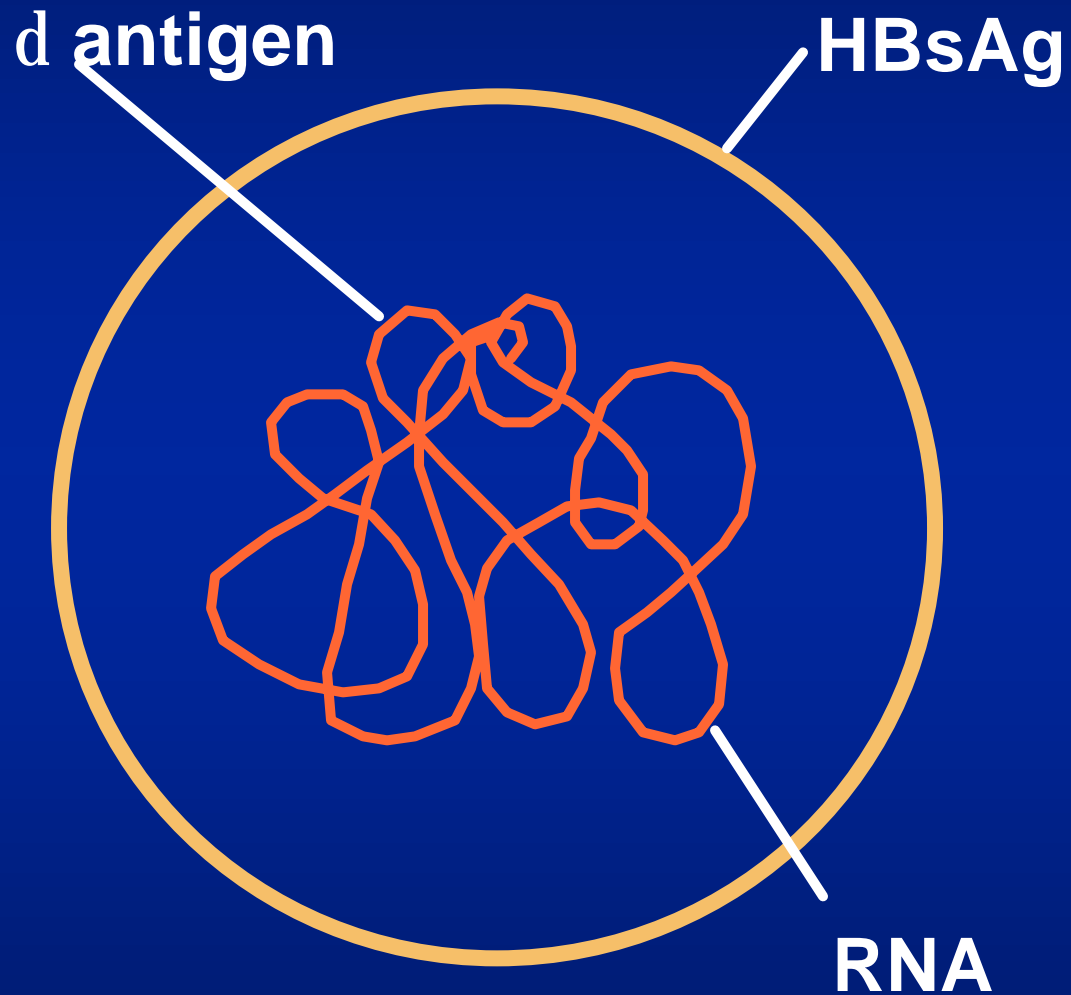


# Hepatitis D (Delta) Virus



# Hepatitis D - Clinical Features

- **Coinfection**
  - severe acute disease
  - low risk of chronic infection
- **Superinfection**
  - usually develop chronic HDV infection
  - high risk of severe chronic liver disease

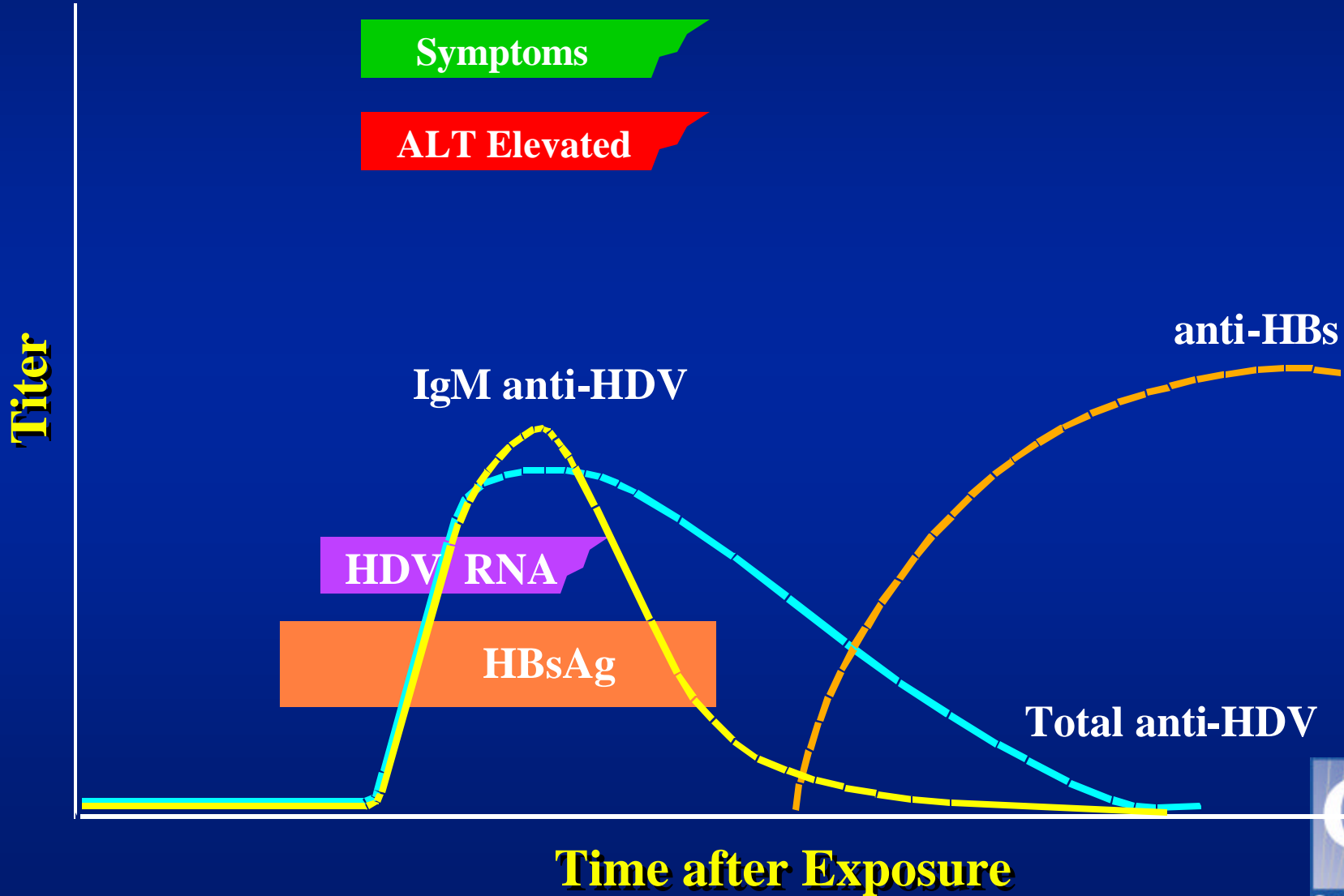
# Hepatitis D Virus

## Modes of Transmission

- Percutaneous exposures
  - injecting drug use
- Permucosal exposures
  - sex contact

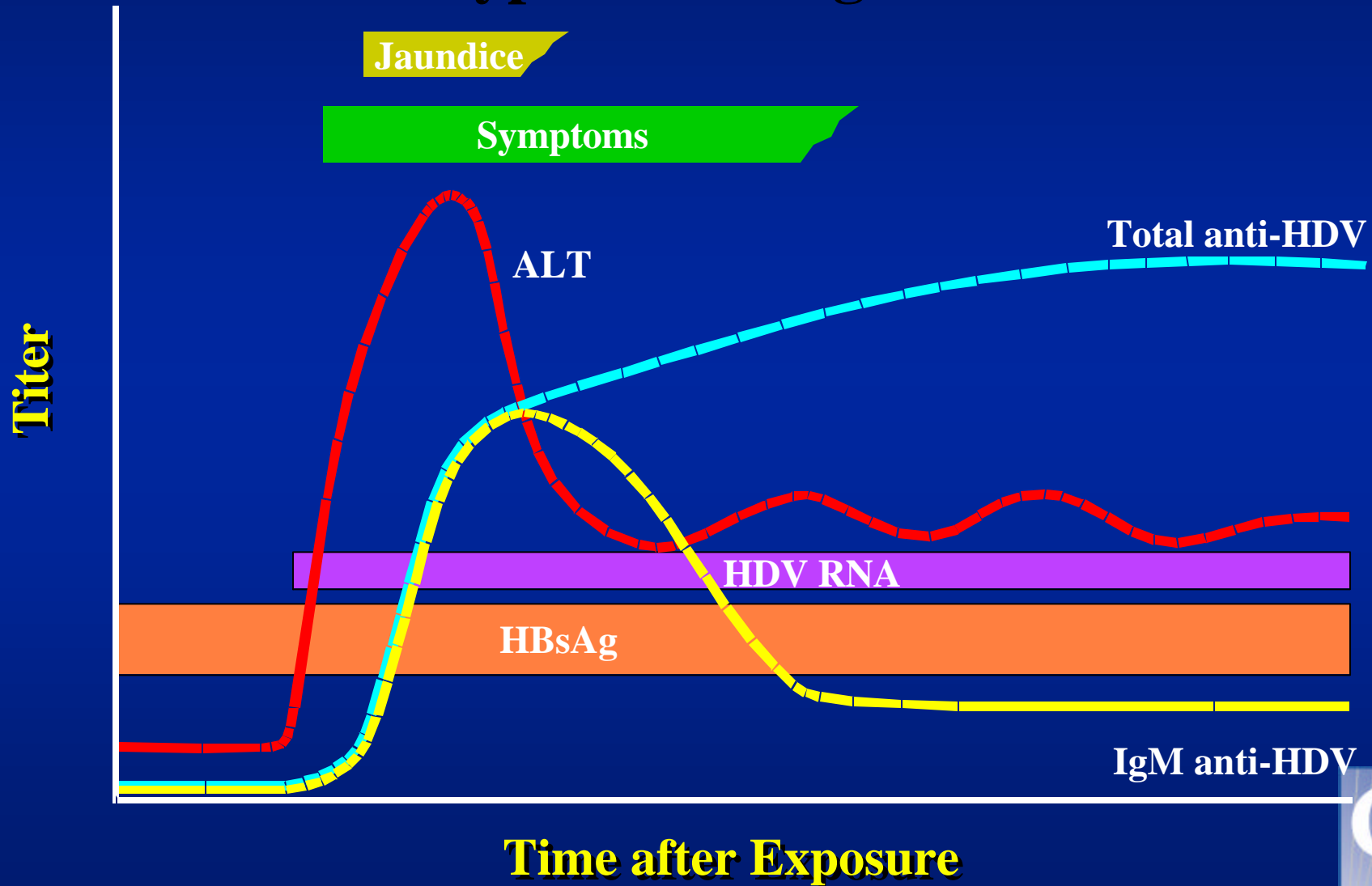
# HBV - HDV Coinfection

## Typical Serologic Course

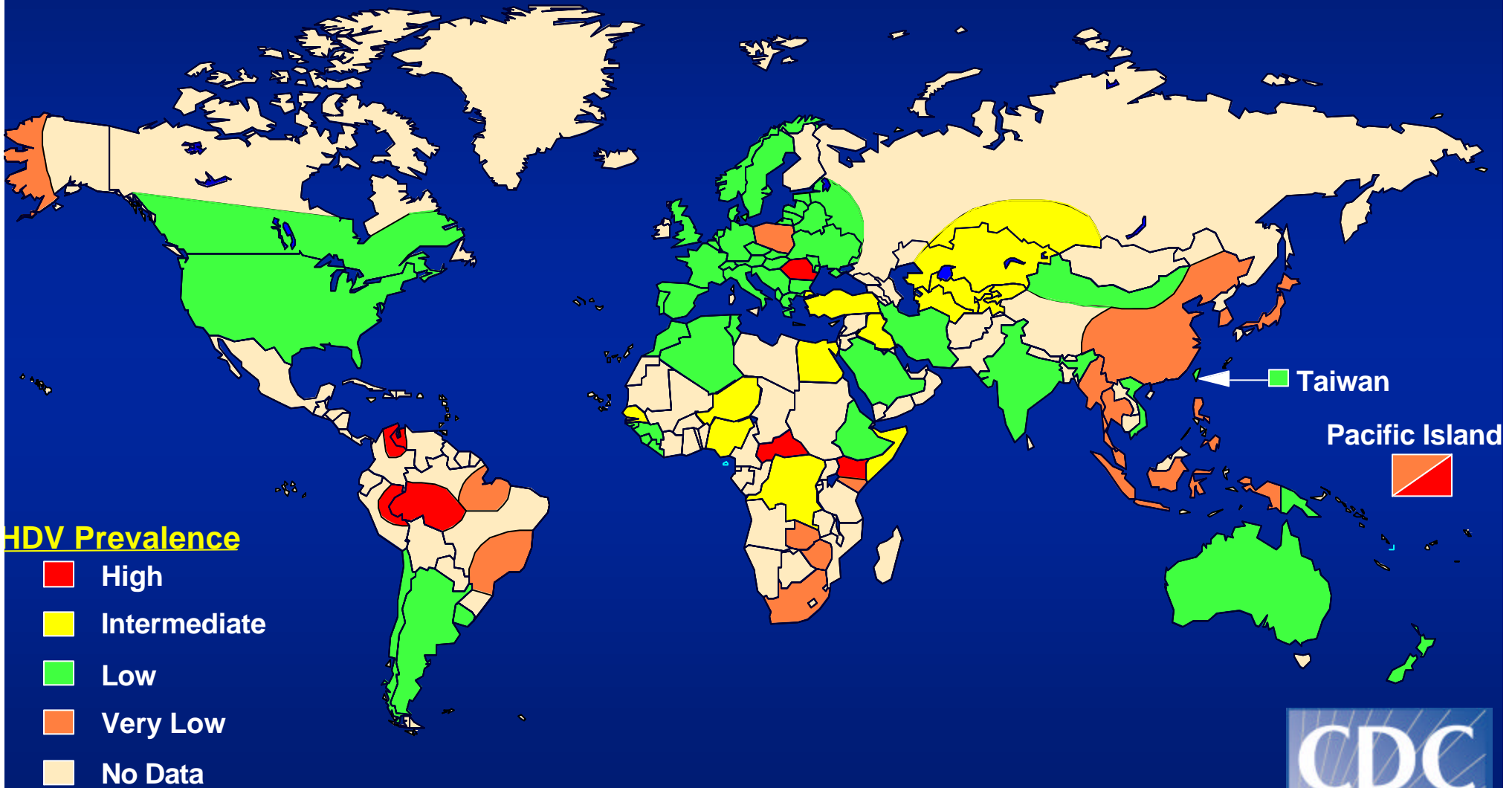


# HBV - HDV Superinfection

## Typical Serologic Course



# Geographic Distribution of HDV Infection



# Hepatitis D - Prevention

- **HBV-HDV Coinfection**

Pre or postexposure prophylaxis to prevent HBV infection

- **HBV-HDV Superinfection**

Education to reduce risk behaviors among persons with chronic HBV infection