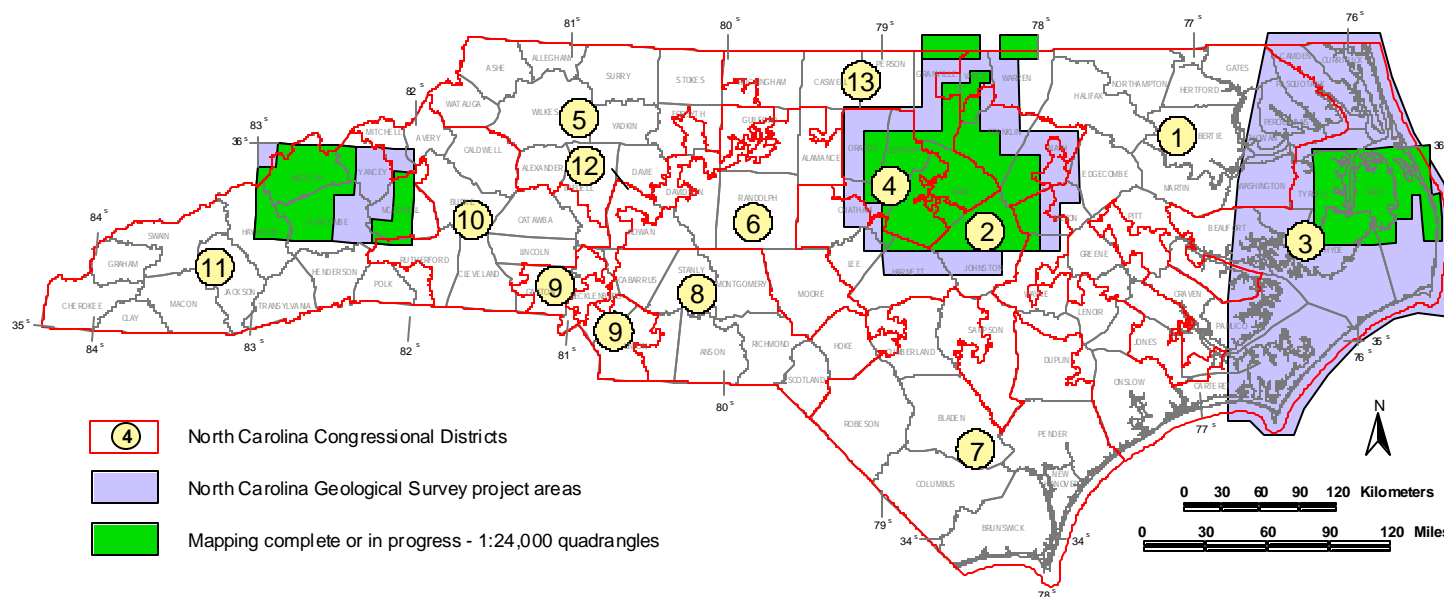




National Cooperative Geologic Mapping Program

STATEMAP Component: States compete for federal matching funds for geologic mapping

NORTH CAROLINA



Contact information

North Carolina Geological Survey
 State Geologist: James D. Simons (919/733-3833)
 STATEMAP Contact: Timothy W. Clark (919/733-2423)
<http://www.geology.enr.state.nc.us>

U.S.G.S. Geologic Mapping Program Office
 Program Coordinators: Peter T. Lyttle (703/648-6943)
 Assoc. Program Coordinators: Randall C. Orndorff (703/648-4316)
 Laurel M. Bybell (703/648-6647)

<http://ncgmp.usgs.gov/>

**SUMMARY OF STATEMAP
GEOLOGIC MAPPING PROGRAM IN NORTH CAROLINA**

NCGS Project Year	Federal Fiscal Year	Project Title All project areas are 7.5-minute quadrangles mapped at 1:24,0000 unless noted.	State Dollars	Federal Dollars	Total Project Dollars
1	93	Bunn West, Zebulon, Middlesex, Stancils Chapel, Clayton	\$21,000	\$21,000	\$42,000
2	94	Kenly East, Kenly West, Flowers, Selma, Bunn East, Cokesbury, Raleigh West(1/2)	50,000	50,000	100,000
3	95	Spring Hope, Bailey, Lucama, Rolesville, Knightdale, Edmondson, Garner, Angier	60,000	60,000	120,000
4	96	Lucama*, Kenly East*, Kenly West*, Stancils Chapel*, Green Level, Lake Wheeler, Fines Creek, Bald Creek, Enka (1/2)	112,436	112,436	224,872
5	97	Bailey*, Middlesex*, Zebulon*, Flowers*, Selma*, Apex (1/2), Cary (1/2), and Raleigh East	146,264	146,264	292,528
6	98	Clayton*, Knightdale*, Powhatan*, Spring Hope*, Fuquay-Varina	122,009	122,009	244,018
7	99	Angier*, Edmondson*, Sams Gap, Enka (1/2), Asheville (1/2)	117,302	117,302	234,604
8	00	Fuquay-Varina*, Garner*, Lake Wheeler*, Weaverville (1/2), White Rock (1/2), Kittrell (1/4), and Henderson (1/4)	123,577	123,577	247,154
9	01	Bunn East*, Bunn West*, Apex*, Cokesbury*, Lemon Gap, Asheville (1/2), Weaverville (1/2), Marshall (1/2), Creedmoor, Franklinton (1/2), Kittrell (1/4), Oxford (1/4), and Wilton (1/4)	232,506	232,506	465,012
10	02	Compilation bedrock map of the Raleigh 1:100,000 quadrangle, Spring Creek, Marshall (1/2), Northwest Durham, Northeast Durham, Wilton (1/2)	240,250	240,233	480,483
11	03	Leicester (1/2), Paint Rock, Henderson (3/4), Chapel Hill, portions of Manteo and Plymouth 1:100,000 quadrangles	160,868	160,503	321,371
		TOTALS	1,386,212	1,385,830	2,772,042

* Geologic mapping of Coastal Plain units only. Bedrock geology previously mapped.

The North Carolina Geological Survey (NCGS) receives federal funding for conducting detailed geologic mapping from the STATEMAP program, a component of the National Cooperative Geologic Mapping Program (NCGMP). The 102nd Congress created the program in 1992 by passing the National Geologic Mapping Act (Public Law 102-285). This law has been reauthorized twice since then, most recently by the 106th Congress in 1999. The NCGMP distributes funding through three programs: 1) FEDMAP for the U.S. Geological Survey; 2) STATEMAP for participating state geological surveys; and 3) EDMAP for training future geologic mappers at universities and colleges. The NCGS has received STATEMAP funding through a competitive grant process since the program's inception in 1992 and has ranked as one of the top ten states for funding almost every year since then. To date the NCGS has received

over \$1.3 million during the past eleven years. Because the STATEMAP program requires that every federal dollar be matched by a state dollar, over \$2.7 million have been allocated to the NCGS for geologic mapping in this program. The NCGS has concentrated its 1:24,000-scale detailed mapping in three areas: Raleigh, Asheville, and the northeastern Coastal Plain. These areas are some of the most populous and rapidly growing regions of the state. This rapid growth has accentuated many geologic-related problems including land-use and infrastructure planning; mineral resource identification; and environmental assessment and planning related to highway construction, waste disposal siting, and ground-water conservation and development. An adequate understanding of the geology and mineral resources of these regions is needed to help resolve these problems.