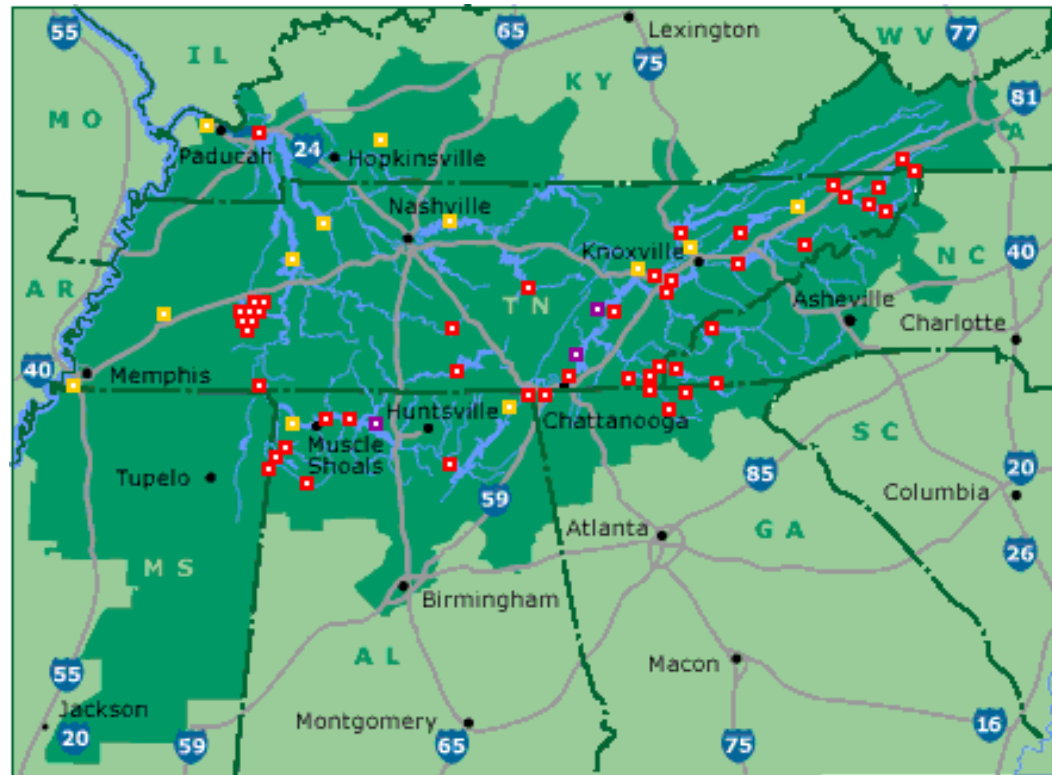


Generating Prosperity in the Tennessee Valley

TVA achieves excellence in public service for the good of the people of the Tennessee Valley by supporting sustainable economic development, supplying affordable, reliable power, and managing a thriving river system.



● Dams

● Nuclear Plants

● Fossil Plants



Improve Water Resource Condition

- Assess watershed health – streams/reservoirs
- Build local coalitions
- Partner on watershed improvement projects
- Produce measurable improvements in watershed condition

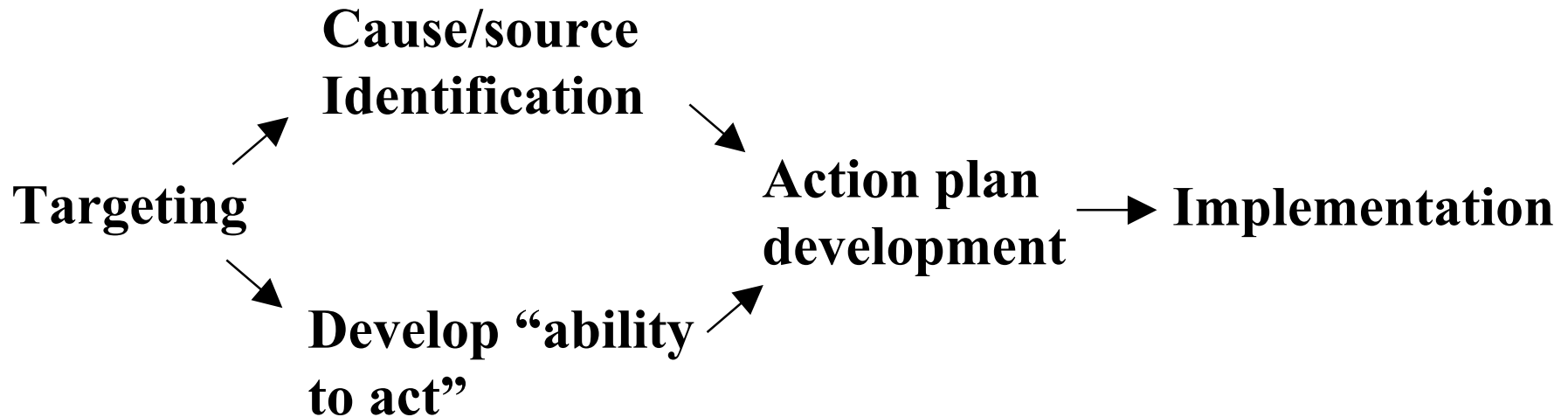


- Aquatic resource monitoring
 - Reservoir vital signs: oxygen, productivity, fish community, benthic community, sediment quality
 - Stream health: Index of Biotic Integrity
 - Rec. Site bacteriological monitoring
 - Project specific monitoring
- Water quality monitoring results are used to:
 - Select where to work
 - Identify issues to address
 - Set goals
 - Evaluate results

- A “target rich environment” – more opportunities than we can address
- Focus is: where our efforts, with our partners, can actually improve a condition or prevent a decline in a condition.
- Driven by TVA Reservoir and Stream Health measurements and State assessment results.
- We tend to avoid “legacy” issues; we tend to avoid situations where problems are being satisfactorily addressed.
- In short, we follow a “triage” approach.



Watershed improvement projects: Generalized structure



- Overall Objective: Develop an “ability to act” on water quality issues in targeted areas.
- Ability to act requires:
 - Technical savvy
 - Political/community connectedness
 - Alignment with water quality goals
 - Level of organization
- These four attributes are the basis for “coalition building.”

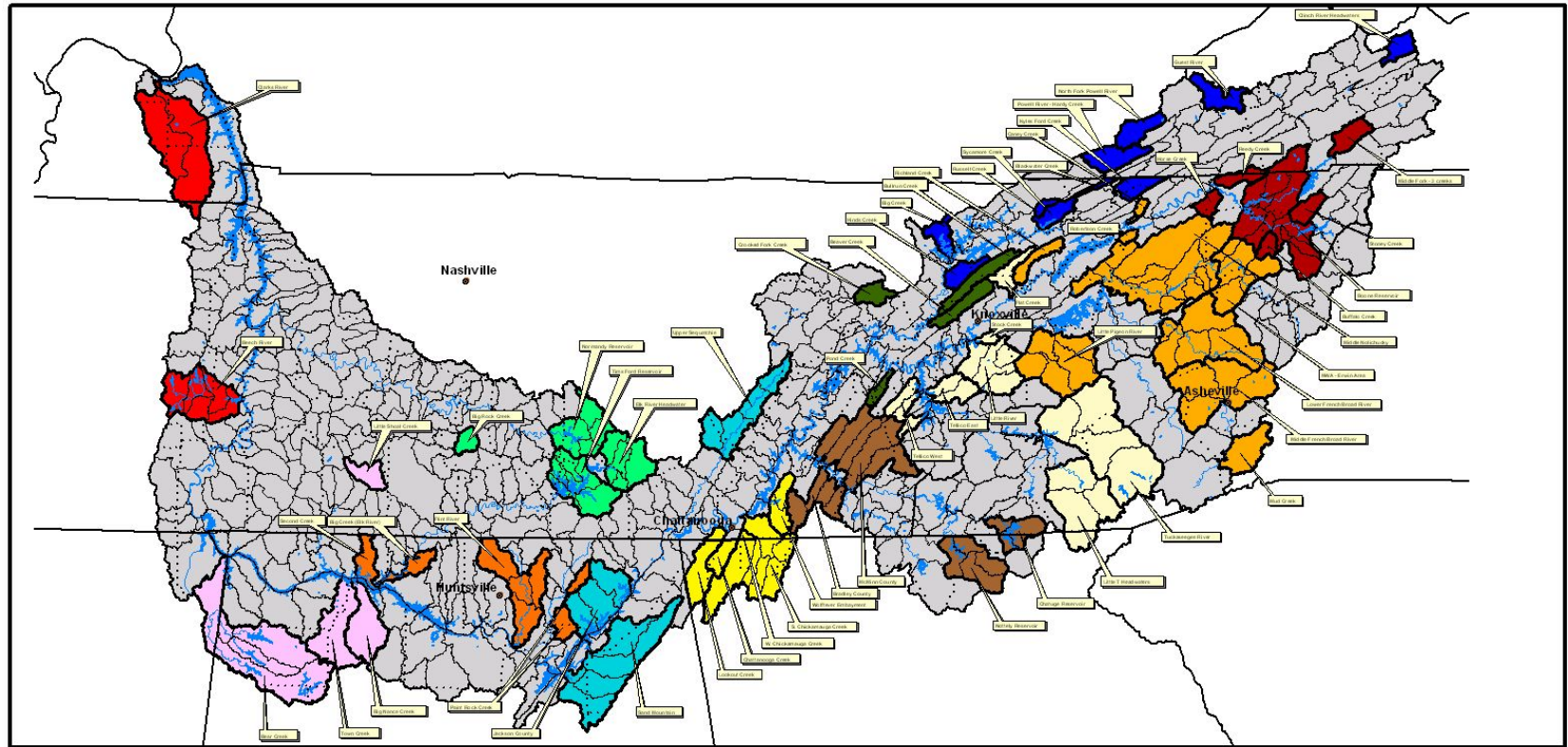


Resource Stewardship Watershed Teams



- | | | | |
|---------------------------|---------------------------|--------------------------------|--------------------|
| 1 Upper Holston | 4 Melton Hill | 7 Chickamauga-Nickajack | 10 Pickwick |
| 2 Cherokee-Douglas | 5 Little Tennessee | 8 Guntersville | 11 Kentucky |
| 3 Clinch-Powell | 6 Hiwassee | 9 Wheeler | |

Current Watershed Efforts



Watershed Team Initiatives

FY03

20 0 20 40 60 80 100 Miles



Produced by Keri Johnson, 11/2002

- Fewer, larger efforts.
- More emphasis on a structured sequence ensuring a proper foundation has been prepared.
- More emphasis on action plan development.
- Increased interest in nutrient impacts particularly to reservoirs.
- Increased interest in impacts from growth and sprawl.

“High quality water is more than the dream of conservationists, more than a political slogan; high quality water in the right quantity at the right place at the right time, is essential to health, recreation, and economic growth.”

Edmund S. Muskie, 1966