

National Weekly Cattle And Beef Summary

Des Moines, Iowa

Mon Oct 25, 2004

USDA Livestock & Grain Market News

For Week Ending:

10/22/2004

| | <u>This Week</u> | <u>Prior Week</u> | <u>Last Year</u> |
|---|------------------|-------------------|------------------|
| http://www.ams.usda.gov/mnreports/LM_XB463.txt | | | |
| CUTOUT VALUES | 137.63 | 134.42 | 172.28 |
| Primal Rib | 206.08 | 204.65 | 273.89 |
| Primal Chuck | 109.37 | 107.06 | 129.09 |
| Primal Round | 132.12 | 128.87 | 154.86 |
| Primal Loin | 192.13 | 187.17 | 246.19 |
| Primal Brisket | 80.28 | 78.82 | 103.59 |
| Primal Short Plate | 74.09 | 69.57 | 112.70 |
| Primal Flank | 84.27 | 79.11 | 106.05 |

WEEKLY VOLUME BREAKDOWN

| | <u>This Week</u> | <u>Prior Week</u> | <u>Last Year</u> |
|-----------------------|------------------|-------------------|------------------|
| Total Loads | 5969 | 5866 | 4275 |
| Prime Loads | 30 | 30 | 26 |
| Branded Loads | 388 | 435 | 282 |
| Choice Loads | 1647 | 1760 | 1234 |
| Select Loads | 1488 | 1386 | 1052 |
| Ungraded Loads | 2415 | 2255 | 1680 |
| (cuts, trims, grinds) | | | |

TYPE OF SALES

| | <u>This Week</u> | <u>Prior Week</u> | <u>Last Year</u> |
|----------------------------------|------------------|-------------------|------------------|
| Negotiated Sales 0-21 Day | 3096 | 3108 | 1783 |
| Negotiated Sales 21+ Day | 625 | 586 | 520 |
| Formula Sales | 1989 | 2033 | 1836 |
| Forward Contract Sales | 259 | 140 | 136 |
| Domestic Sales | 5750 | 5763 | 3969 |
| Exports | 218 | 103 | 305 |

http://www.ams.usda.gov/mnreports/lm_ct150.txt

5 AREA WEEKLY WEIGHTED CATTLE PRICE

| | <u>This Week</u> | <u>Prior Week</u> | <u>Last Year</u> |
|-----------------------|------------------|-------------------|------------------|
| Live Steer | 85.91 | 85.53 | 97.70 |
| Live Heifer | 86.08 | 85.64 | 97.59 |
| Dressed Steer | 133.79 | 132.55 | 158.55 |
| Dressed Heifer | 134.63 | 132.70 | 159.75 |

http://www.ams.usda.gov/mnreports/nw_ls441.txt

WEEKLY USDA BY-PRODUCT DROP VALUE (STEER)

| | <u>This Week</u> | <u>Prior Week</u> | <u>Last Year</u> |
|--|------------------|-------------------|------------------|
| | 7.85 | 7.83 | 9.64 |

http://www.ams.usda.gov/mnreports/SJ_LS712.txt

BEEF PRODUCTION

| | (Estimate) | (Estimate) | (Actual) |
|----------------------------------|------------|------------|----------|
| Slaughter | 641,000 | 631,000 | 657,000 |
| Live Weights | 1270 | 1269 | 1232 |
| Dressed Weights | 777 | 777 | 739 |
| Beef Production (mil lbs) | 495.5 | 487.8 | 483.1 |

http://www.ams.usda.gov/mnreports/NW_LS196.txt

NATIONAL STEER & HEIFER ESTIMATED GRADING PERCENT

For Week Ending: Oct 09, 2004

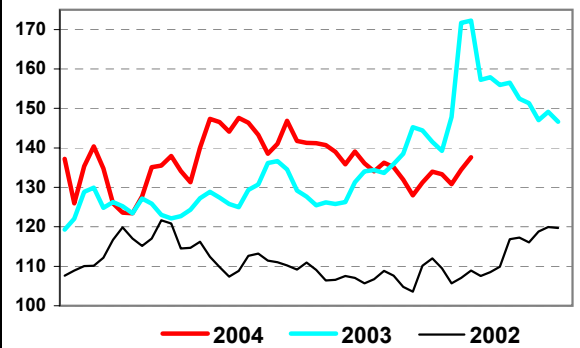
Total Quality and Yield Grades for All Regions

| | <u>This Week</u> | <u>Prior Week</u> | <u>Last Year</u> |
|-------------------|------------------|-------------------|------------------|
| Prime | 3.02% | 3.08% | 2.58% |
| Choice | 53.08% | 53.71% | 50.08% |
| Select | 36.96% | 36.33% | 38.67% |
| Yield only | 3.87% | 3.55% | 4.41% |

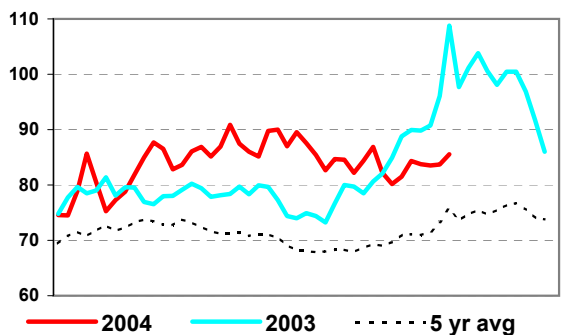
Percentage by Class

| | <u>This Week</u> | <u>Prior Week</u> | <u>Last Year</u> |
|------------------|------------------|-------------------|------------------|
| Steer | 49.15% | 50.69% | 46.50% |
| Heifer | 33.45% | 32.23% | 33.89% |
| Dairy Cow | 7.30% | 7.15% | 8.95% |
| Other Cow | 8.24% | 8.12% | 8.83% |
| Bulls | 1.86% | 1.81% | 1.83% |

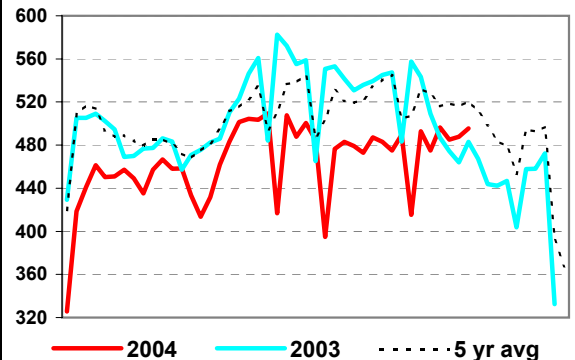
Weekly Comprehensive Cutout Value



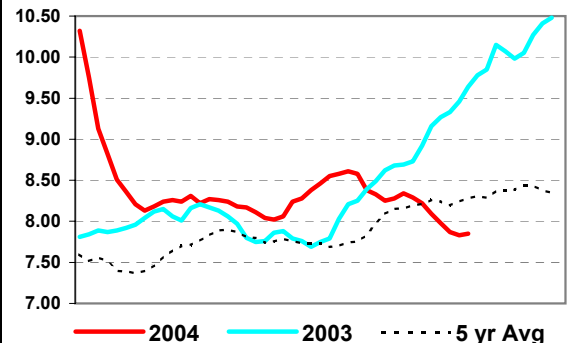
5 Area Weekly Live Steer Price



Weekly Beef Production



Weekly Steer Drop Value



Source: USDA Livestock & Grain Market News

Des Moines, Iowa

Phone: 515-284-4460

Email: desm.lgmn@usda.gov

<http://www.ams.usda.gov/LSMNpubs/index.htm>