

National Agricultural Statistics Service

The National Agricultural Statistics Service (NASS) administers the United States Department of Agriculture's program for collecting and publishing timely national and state agricultural statistics. In 1862, the first Commissioner of the newly formed Department of Agriculture, Isaac Newton, established a goal to "collect, arrange, and publish statistical and other useful agricultural information." A year later, in July 1863, the Department's Division of Statistics issued the Nation's first official *Crop Production* report.

The structure of farming, ranching, and the agricultural industry has changed dramatically during the succeeding 130 years. The need for accurate, timely, and objective statistical information about the Nation's agriculture has become even more important as the country has moved from subsistence agriculture to a highly industrialized business that produces food and fiber for the world market.

The National Agricultural Statistics Service now publishes nearly 400 reports a year with official estimates covering over 120 crops and 45 livestock items. Each report is issued according to a published annual calendar of release dates. Strict security procedures ensure that no one gains premature access to the information. In addition, NASS has a strong tradition of cooperation with other federal agencies, state departments of agriculture, and universities to supplement the federal statistics program. The state-federal cooperative relationship, which began over 75 years ago, eliminates duplication and provides state input while maintaining consistency in surveys conducted across the U.S.

Data Sources and Estimation Procedures

The official estimates prepared by NASS are based on data obtained from farm and ranch operators, as well as from agribusinesses such as grain elevators, shippers, processors, and commercial storage firms. Scientifically designed sampling methods are used to determine the operations to be included in each survey. Operators are interviewed by professionally trained interviewers, either in person or by telephone. In some instances operators will receive a

questionnaire by mail with a postage-paid return envelope. Anyone not returning the form is usually telephoned; however, survey response is voluntary. Very stringent laws and procedures protect the confidentiality of each operator's response.

NASS maintains extensive lists of farm and ranch operations along with identifiers that indicate size and type of operation. NASS also maintains complete lists of grain storage facilities, commercial operations such as feedlots, cold storage facilities, and manufactured dairy processors. Nearly every report issued by NASS is based on survey sample data collected from farms or other agribusinesses selected from these lists.

NASS also maintains an area sampling frame. The area frame, which is essentially the entire land mass of the United States, ensures complete coverage of the U.S. farm population. The Area Frame Survey provides accurate estimates of crop acres and is the primary basis for the June Acreage report. The area frame is also used to measure the incompleteness of the list frame.

Sampling from the area frame is a multi-step process. First, all land in each state is classified into land use categories by the intensity of cultivation using a variety of map products, satellite imagery, and computer software packages. These land use classifications range from intensively cultivated land to marginally cultivated grazing land to urban areas. The land in each use category is then divided into segments ranging from about 1 square mile in cultivated areas to 0.1 square mile in urban areas. This allows intensively cultivated land segments to be selected with a greater frequency than those less intensively cultivated.

Nearly 12,000 area segments are selected nationwide for the large scale survey conducted each June. Using maps and aerial photos that show the exact site and boundaries of each sample segment, interviewers locate and interview every operator with land inside the segment boundaries. They obtain information on the crops planted in each field, livestock inventory, and quantities of grain in storage.

Administrative Data Sources

A considerable amount of data is also available from other organizations, both private and public. This administrative data is used to evaluate the accuracy of production estimates and to determine the final estimates. The information becomes available during the marketing year but often after the preliminary production estimates are determined. Some examples of administrative data follow.

Utilization data. Information about imports, exports, soybean crush, and industrial use are available from the Bureau of the Census. These data are used in a balance sheet that starts with carryover stocks from the previous year and the current production estimate, which measures total supply. At the end of the marketing year, when subtracting utilization data from the supplies at the beginning of the crop year, the result should correspond closely with the ending stocks. If there is a large unexplained difference between survey stocks and indicated stocks from the balance sheet, then the previous year acreage, yield, and production survey and stocks data are reviewed to determine if revisions should be made.

Slaughter statistics. NASS receives data through the Food Safety and Inspection Service about the number of animals inspected at slaughter operations. These data are used to monitor the accuracy of the livestock production statistics.

Price statistics. Extensive use is made of USDA's Agricultural Marketing Service market news data to prepare the monthly average prices received from the sales of livestock species. Also, Bureau of Labor price indices are used to measure the relative changes in prices paid for production input items.

Summary

NASS is a world leader in the use of statistical methodology to produce statistics about agriculture. NASS statisticians provide consultative services to a large number of developing countries around the world, helping them develop statistical information about their agriculture. NASS has also been a leader in making information available through electronic media. Globalization of markets is expanding as buyers and sellers have nearly instant access to market information from around the world.

The 1997 U.S. Census of Agriculture is being conducted by NASS and began in December 1997. The Census of Agriculture functions have been transferred from the Census Bureau in the Department of Commerce to NASS in the Department of Agriculture. This will link all major statistical services for agriculture. All county, state, and U.S. level data provided in previous Census periods will be made available from the 1997 Census of Agriculture.

Electronic Dissemination of Data from NASS

Internet

NASS National and State reports, data, agricultural graphics, and Agency information are available on the Internet. From the NASS Home Page there are nine areas that can be accessed for more information. "Today's Reports" is one of the areas and is updated every day showing the reports released for that day. Reports are generally available within 5 minutes after release time.

The NASS Home Page address is:
<http://www.usda.gov/nass/>

Electronic Subscriptions

All of the NASS National reports are also available via an automated mailing list. You may subscribe to as many reports as you wish and they will be sent directly to your e-mail address within 3 hours of release, all at no charge.

For further information, send an e-mail to:
usda-reports@usda.mannlib.cornell.edu
 and in the body of the message, type the word: list. Additional information is also available by selecting Publications from the NASS Home Page.

U.S. Farm Economics Summary

Farm Numbers Down Slightly

There were 2.06 million U.S. farms in 1997, down less than one percent from 1996. The average farm size increased to 471 acres. Land in farms declined slightly to 968 million acres. Farms with annual sales of over \$100,000 accounted for 17.0 percent of all farms and for 54.5 percent of land in farms, averaging 1,513 acres.

Real Estate Values Up 6.0 Percent

Average U.S. farm real estate values, including land and buildings, averaged \$942 per acre as of January 1, 1997, up 6.0 percent from a year earlier. The largest regional increase was in the Corn Belt, 7.6 percent, and the smallest was in the Delta, 3.2 percent.

Cash Receipts Reach Record \$202.3 Billion

U.S. cash receipts from farm marketings reached a record \$202.3 billion in 1996, up 7.8 percent from 1995. Crop cash receipts, at \$109.4 billion, were up 8.7 percent while livestock receipts, at \$92.9 billion, were up 6.8 percent. California led in cash receipts at \$23.3 billion, followed by Texas at \$13.1 billion, Iowa at \$12.9 billion, and Nebraska at \$9.5 billion.

Prices Received Down and Prices Paid Up Slightly

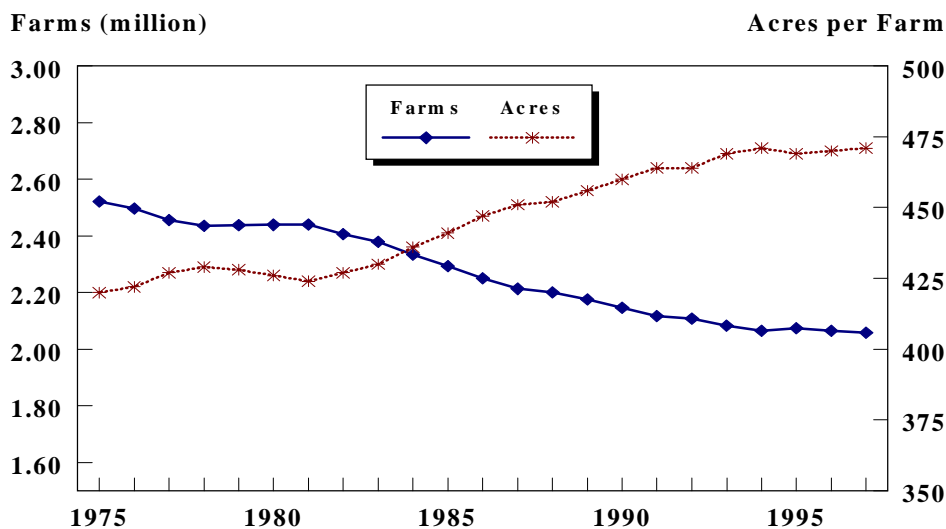
Average prices received by farmers for all farm products in 1997 were down 4.5 percent, with crop prices, largely grains and potatoes, down 8.7 percent. Livestock prices overall were unchanged from 1996 with meat animal increases offsetting decreases for milk and poultry. Overall prices paid by farmers in 1997 were up 0.9 percent. Prices paid by crop farmers rose 1.7 percent, while prices paid by livestock farmers increased 1.8 percent.

Ranchers in the 17 Western States paid fees for grazing livestock on private lands averaging \$11.00 per animal unit month, up 4.8 percent from 1996. Overall farm production expenditures rose 3.9 percent in 1996. U.S. annual average all hired wage rate rose to \$7.36 per hour in 1997, up from \$6.78 in 1996.

Soybean, Wheat, and Cotton Exports Up

Soybean exports for the 1998 crop are expected to be up 8.8 percent, wheat up 7.4 percent, cotton up 6.3 percent, and rice up less than 1 percent. Corn exports for crop year 1998 are expected to be down 9.5 percent. Red meat exports for calendar year 1998 are expected to be down 5.7 percent, but poultry exports are expected to be up 1.8 percent.

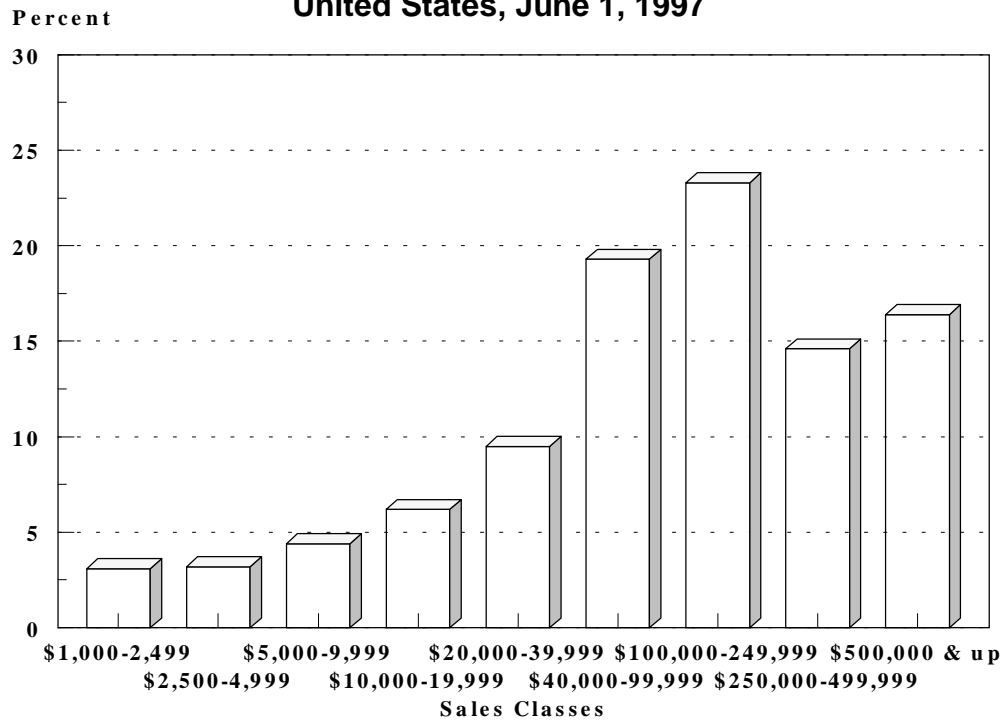
**Number of Farms and Average Farm Size 1995-1997
United States**



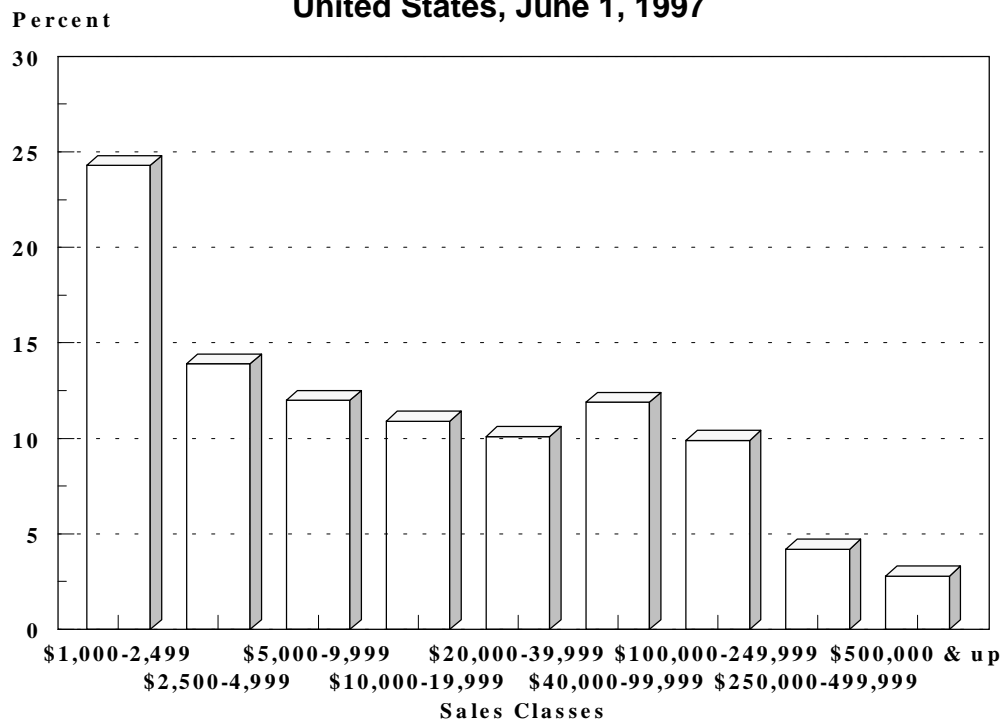
1975-96 estimates are for June 1 date. 1997 estimates are for the entire year

NASS, Livestock & Economics Branch, (202) 720-3570

**Percent of Land in Farms by Economic Sales Class
United States, June 1, 1997**



**Percent of Farms by Economic Sales Class
United States, June 1, 1997**

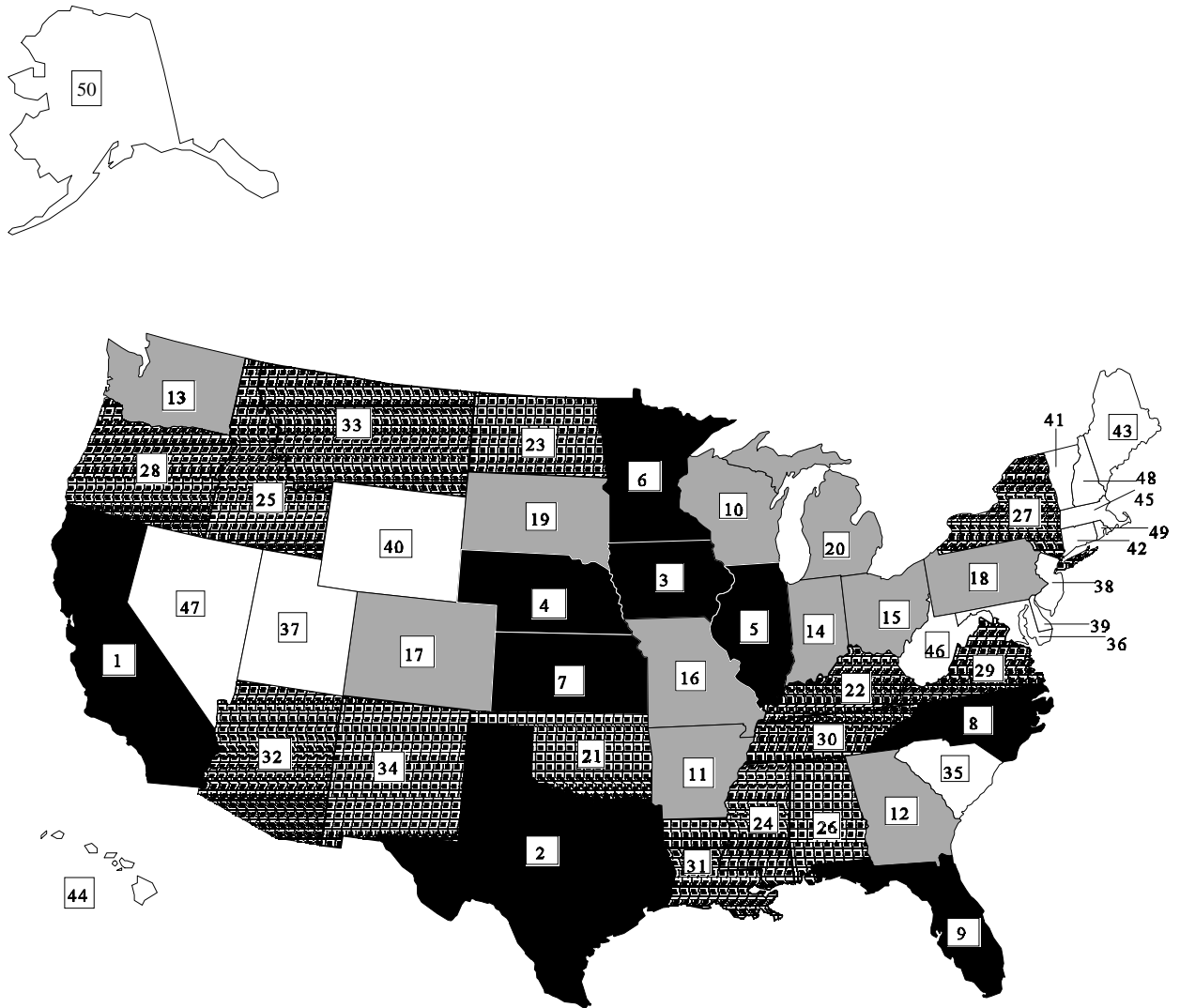


Cash Receipts: State Rankings, 1996

State	Total Cash Receipts		Livestock and Products		Crops	
	Rank	Cash Receipts <i>million dollars</i>	Rank	Cash Receipts <i>million dollars</i>	Rank	Cash Receipts <i>million dollars</i>
Alabama	26	3,174	15	2,363	34	811
Alaska	50	29	50	6	50	23
Arizona	32	2,146	31	839	27	1,308
Arkansas	11	5,887	9	3,357	14	2,530
California	1	23,310	2	6,213	1	17,096
Colorado	17	4,229	12	2,759	25	1,470
Connecticut	42	489	43	237	40	252
Delaware	39	757	37	573	44	184
Florida	9	6,131	28	1,188	5	4,942
Georgia	12	5,687	10	3,279	16	2,408
Hawaii	44	483	48	66	38	417
Idaho	25	3,410	26	1,329	19	2,081
Illinois	5	9,050	16	2,061	3	6,989
Indiana	14	5,558	20	1,895	9	3,663
Iowa	3	12,853	3	5,457	2	7,396
Kansas	7	7,869	5	4,570	11	3,299
Kentucky	22	3,550	21	1,719	21	1,831
Louisiana	31	2,342	34	687	23	1,655
Maine	43	485	42	262	42	224
Maryland	36	1,534	30	901	35	633
Massachusetts	45	478	46	109	39	369
Michigan	20	3,643	25	1,448	18	2,195
Minnesota	6	8,809	8	4,168	6	4,641
Mississippi	24	3,463	19	1,934	24	1,529
Missouri	16	4,950	13	2,450	15	2,500
Montana	33	2,027	32	797	29	1,230
Nebraska	4	9,454	4	5,277	7	4,177
Nevada	47	286	45	153	45	133
New Hampshire	48	161	47	72	47	89
New Jersey	38	801	44	196	36	605
New Mexico	34	1,709	27	1,197	37	512
New York	27	3,043	17	2,045	31	998
North Carolina	8	7,831	6	4,427	10	3,404
North Dakota	23	3,532	38	537	13	2,996
Ohio	15	5,122	18	1,945	12	3,177
Oklahoma	21	3,566	14	2,439	30	1,126
Oregon	28	2,977	35	657	17	2,320
Pennsylvania	18	4,143	11	2,865	28	1,278
Rhode Island	49	83	49	11	49	72
South Carolina	35	1,602	33	737	33	865
South Dakota	19	3,684	23	1,633	20	2,051
Tennessee	30	2,372	29	998	26	1,374
Texas	2	13,053	1	7,758	4	5,295
Utah	37	873	36	646	41	227
Vermont	41	535	40	437	46	98
Virginia	29	2,378	24	1,478	32	900
Washington	13	5,681	22	1,664	8	4,017
West Virginia	46	388	41	308	48	80
Wisconsin	10	6,062	7	4,288	22	1,773
Wyoming	40	662	39	478	43	184

ERS, Roger Strickland, (202) 219-0806

States Ranked by 1996 Cash Receipts



- The top 9 states comprise 50 percent of total cash receipts:
 CA, FL, IL, IA, KS, MN, NC, NE, TX
- The next 11 states comprise 25 percent:
 AR, CO, GA, IN, MI, MO, OH, PA, SD, WA, WI
- The next 14 states comprise 20 percent:
 AL, AZ, ID, KY, LA, MS, MT, ND, NM, NY, OK, OR, TN, VA
- The remaining 16 states comprise 5 percent:
 AK, CT, DE, HI, MA, MD, ME, NH, NJ, NV, RI, SC, UT, VT, WV, WY

Cash Receipts: Top 5 Commodities in Each State, 1996

Rank	Alabama		Alaska		Arizona		Arkansas		California	
	Commodity	Cash Receipts	Commodity	Cash Receipts	Commodity	Cash Receipts	Commodity	Cash Receipts	Commodity	Cash Receipts
		<i>million dollars</i>		<i>million dollars</i>		<i>million dollars</i>		<i>million dollars</i>		<i>million dollars</i>
1	Broilers	1,635	Greenhse/nursery	18	Cattle and calves	384	Broilers	2,122	Dairy products	3,717
2	Cattle and calves	286	Dairy products	3	Dairy products	357	Soybean	763	Greenhse/nursery	2,224
3	Cotton	260	Potatoes	2	Cotton	341	Rice	644	Grapes	2,154
4	Chicken eggs	225	Hay	1	Lettuce	306	Cotton	625	Cotton	1,191
5	Greenhse/nursery	190	Cattle and calves	1	Cantaloups	85	Chicken eggs	300	Cattle and calves	1,145
	Colorado		Connecticut		Delaware		Florida		Georgia	
1	Cattle and calves	2,072	Greenhse/nursery	123	Broilers	524	Oranges	1,291	Broilers	2,205
2	Wheat	391	Dairy products	79	Soybean	41	Greenhse/nursery	1,140	Cotton	782
3	Corn	328	Aquaculture	62	Corn	35	Cane for sugar	462	Peanuts	389
4	Dairy products	246	Chicken eggs	59	Greenhse/nursery	28	Dairy products	431	Chicken eggs	348
5	Hogs	174	Cattle and calves	11	Dairy products	21	Tomatoes	382	Greenhse/nursery	273
	Hawaii		Idaho		Illinois		Indiana		Iowa	
1	Cane for sugar	108	Potatoes	716	Corn	3,546	Corn	1,784	Corn	4,290
2	Pineapples	87	Dairy products	653	Soybean	2,784	Soybean	1,453	Hogs	3,004
3	Greenhse/nursery	74	Cattle and calves	574	Hogs	1,039	Hogs	830	Soybean	2,892
4	Macadamia nuts	44	Wheat	484	Cattle and calves	564	Chicken eggs	320	Cattle and calves	1,461
5	Dairy products	29	Hay	198	Dairy products	345	Dairy products	313	Dairy products	546
	Kansas		Kentucky		Louisiana		Maine		Maryland	
1	Cattle and calves	3,995	Tobacco	813	Cotton	520	Potatoes	103	Broilers	513
2	Wheat	1,184	Horses/mules	628	Cane for sugar	271	Dairy products	101	Greenhse/nursery	230
3	Corn	783	Cattle and calves	485	Soybean	249	Chicken eggs	87	Dairy products	200
4	Sorghum grain	678	Corn	364	Rice	246	Aquaculture	48	Corn	106
5	Soybean	455	Soybean	307	Corn	175	Blueberries	30	Soybean	94
	Massachusetts		Michigan		Minnesota		Mississippi		Missouri	
1	Greenhse/nursery	147	Dairy products	807	Corn	1,704	Broilers	1,197	Soybean	996
2	Cranberries	98	Corn	477	Soybean	1,618	Cotton	726	Corn	670
3	Dairy products	70	Greenhse/nursery	422	Dairy products	1,362	Soybean	328	Hogs	652
4	Apples	14	Soybean	351	Hogs	1,116	Aquaculture	275	Cattle and calves	626
5	Corn, sweet	14	Cattle and calves	232	Cattle and calves	925	Chicken eggs	154	Broilers	397
	Montana		Nebraska		Nevada		New Hampshire		New Jersey	
1	Wheat	861	Cattle and calves	4,082	Cattle and calves	81	Dairy products	50	Greenhse/nursery	257
2	Cattle and calves	656	Corn	2,491	Hay	67	Greenhse/nursery	40	Dairy products	45
3	Barley	153	Hogs	856	Dairy products	62	Apples	9	Peaches	34
4	Hay	89	Soybean	828	Potatoes	20	Cattle and calves	7	Blueberries	33
5	Sugar beets	52	Wheat	338	Onions	16	Sweet corn	6	Chicken eggs	29
	New Mexico		New York		North Carolina		North Dakota		Ohio	
1	Cattle and calves	628	Dairy products	1,693	Hogs	1,749	Wheat	1,607	Soybean	1,126
2	Dairy products	523	Greenhse/nursery	239	Broilers	1,310	Cattle and calves	305	Corn	947
3	Hay	155	Apples	138	Tobacco	1,021	Barley	303	Dairy products	651
4	Peppers, chili	65	Corn	124	Greenhse/nursery	889	Sunflower	208	Greenhse/nursery	517
5	Onions	45	Cattle and calves	102	Turkeys	612	Sugar beets	165	Hogs	398
	Oklahoma		Oregon		Pennsylvania		Rhode Island		South Carolina	
1	Cattle and calves	1,446	Greenhse/nursery	442	Dairy products	1,662	Greenhse/nursery	50	Broilers	307
2	Wheat	398	Wheat	294	Cattle and calves	339	Dairy products	5	Tobacco	215
3	Broilers	329	Cattle and calves	258	Greenhse/nursery	318	Chicken eggs	3	Greenhse/nursery	168
4	Hogs	321	Dairy products	237	Chicken eggs	295	Corn, sweet	2	Cotton	158
5	Greenhse/nursery	263	Hay	220	Mushrooms, agaricus	255	Cattle and calves	2	Turkeys	108
	South Dakota		Tennessee		Texas		Utah		Vermont	
1	Cattle and calves	946	Cattle and calves	356	Cattle and calves	5,331	Cattle and calves	244	Dairy products	393
2	Corn	635	Cotton	276	Cotton	1,810	Dairy products	219	Cattle and calves	34
3	Soybean	561	Soybean	273	Dairy products	921	Hay	78	Greenhse/nursery	31
4	Wheat	520	Dairy products	254	Greenhse/nursery	838	Wheat	38	Maple products	15
5	Hogs	325	Broilers	232	Broilers	726	Greenhse/nursery	32	Christmas trees	12
	Virginia		Washington		Weat Virginia		Wisconsin		Wyoming	
1	Broilers	466	Apples	1,099	Broilers	148	Dairy products	3,262	Cattle and calves	395
2	Dairy products	290	Dairy products	788	Cattle and calves	48	Corn	707	Hay	42
3	Cattle and calves	211	Wheat	775	Dairy products	38	Cattle and calves	544	Sugar beets	37
4	Turkeys	204	Cattle and calves	611	Turkeys	38	Soybean	234	Wheat	35
5	Tobacco	188	Potatoes	470	Chicken eggs	23	Hogs	190	Sheep and lambs	32

ERS, Roger Strickland, (202)219-0806

Cash Receipts: Leading States for Top 25 Commodities, 1996

Rank	All Commodities		Livestock and Products		Crops		Vegetables		Fruits and Nuts	
	State	Cash Receipts	State	Cash Receipts	State	Cash Receipts	State	Cash Receipts	State	Cash Receipts
		<i>million dollars</i>		<i>million dollars</i>		<i>million dollars</i>		<i>million dollars</i>		<i>million dollars</i>
	U.S. Total	202,339	U.S. Total	92,914	U.S. Total	109,425	U.S. Total	14,349	U.S. Total	11,714
1	California	23,310	Texas	7,758	California	17,096	California	5,474	California	6,370
2	Texas	13,053	California	6,213	Iowa	7,396	Florida	1,303	Florida	1,774
3	Iowa	12,853	Iowa	5,457	Illinois	6,989	Idaho	848	Washington	1,466
4	Nebraska	9,454	Nebraska	5,277	Texas	5,295	Washington	831	Oregon	261
5	Illinois	9,050	Kansas	4,570	Florida	4,942	Arizona	555	Michigan	223
6	Minnesota	8,809	North Carolina	4,427	Minnesota	4,641	Michigan	429	New York	209
7	Kansas	7,869	Wisconsin	4,288	Nebraska	4,177	Oregon	397	Hawaii	180
8	North Carolina	7,831	Minnesota	4,168	Washington	4,017	Wisconsin	380	Wisconsin	121
9	Florida	6,131	Arkansas	3,357	Indiana	3,663	Georgia	378	Massachus	121
10	Wisconsin	6,062	Georgia	3,279	North Carolina	3,404	Texas	348	Arizona	120
	#1: Cattle and Calves		#2: Dairy Products		#3: Corn		#4: Soybeans		#5: Broilers	
	U.S. Total	31,138	U.S. Total	22,834	U.S. Total	21,573	U.S. Total	16,211	U.S. Total	13,906
1	Texas	5,331	California	3,717	Iowa	4,290	Iowa	2,892	Georgia	2,205
2	Nebraska	4,082	Wisconsin	3,262	Illinois	3,546	Illinois	2,784	Arkansas	2,122
3	Kansas	3,995	New York	1,693	Nebraska	2,491	Minnesota	1,618	Alabama	1,635
4	Colorado	2,072	Pennsylvania	1,662	Indiana	1,784	Indiana	1,453	North Carolina	1,310
5	Iowa	1,461	Minnesota	1,362	Minnesota	1,704	Ohio	1,126	Mississippi	1,197
6	Oklahoma	1,446	Texas	921	Ohio	947	Missouri	996	Texas	726
7	California	1,145	Michigan	807	Kansas	783	Nebraska	828	Delaware	524
8	South Dakota	946	Washington	788	Wisconsin	707	Arkansas	763	Maryland	513
9	Minnesota	925	Idaho	653	Texas	684	South Dakota	561	Virginia	466
10	Montana	656	Ohio	651	Missouri	670	Kansas	455	California	457
	#6: Hogs		#7: Greenhouse/nursey		#8: Wheat		#9: Cotton		#10: Chicken Eggs	
	U.S. Total	12,644	U.S. Total	10,887	U.S. Total	9,956	U.S. Total	7,461	U.S. Total	4,757
1	Iowa	3,004	California	2,224	North Dakota	1,607	Texas	1,810	California	367
2	North Carolina	1,749	Florida	1,140	Kansas	1,184	California	1,191	Ohio	359
3	Minnesota	1,116	North Carolina	889	Montana	861	Georgia	782	Georgia	348
4	Illinois	1,039	Texas	838	Washington	775	Mississippi	726	Indiana	320
5	Nebraska	856	Ohio	517	South Dakota	520	Arkansas	625	Arkansas	300
6	Indiana	830	Oregon	442	Idaho	484	Louisiana	520	Pennsylvania	295
7	Missouri	652	Michigan	422	Minnesota	413	North Carolina	343	Texas	291
8	Ohio	398	Pennsylvania	318	Oklahoma	398	Arizona	341	Iowa	247
9	Kansas	328	Georgia	273	Colorado	391	Tennessee	276	Alabama	225
10	South Dakota	325	Oklahoma	263	Nebraska	338	Alabama	260	North Carolina	218

--continued

Cash Receipts: U.S. Farm Cash Receipts, 1992-96

Category	1992	1993	1994	1995	1996
	<i>million dollars</i>	<i>million dollars</i>	<i>million dollars</i>	<i>million dollars</i>	<i>million dollars</i>
Farm Marketings and CCC Loans, Total ¹	171,381	177,650	181,239	187,704	202,339
Livestock and Products, Total	85,637	90,170	88,160	87,004	92,914
Meat Animals	47,748	50,823	46,785	44,828	44,382
Dairy Products	19,736	19,243	19,935	19,894	22,834
Poultry and Eggs	15,524	17,326	18,445	19,069	22,326
Other	2,629	2,779	2,995	3,214	3,371
Crops, Total	85,744	87,480	93,079	100,700	109,425
Feed Crops	20,099	20,211	20,351	24,282	28,114
Oil-bearing Crops	13,286	13,220	14,657	15,466	17,756
Vegetables and Melons	11,851	13,435	13,902	14,891	14,349
Fruits and Tree Nuts	10,179	10,284	10,335	11,074	11,714
Food Grains	8,467	8,180	9,545	10,417	11,550
Cotton (lint and seed)	5,192	5,250	6,738	6,851	7,461
Tobacco	2,958	2,948	2,656	2,548	2,796
Other	13,712	13,953	14,895	15,170	15,686
Government Payments	9,169	13,402	7,879	7,253	7,286
Total U.S. Farm Cash Receipts	180,550	191,052	189,118	194,957	209,625

¹ Includes receipts from commodities placed under nonrecourse CCC loans and gains realized on redemptions during the period. ERS, Roger Strickland, (202) 219-9806

U.S. Agricultural Exports

Year	Crops (crop year)						Livestock (calendar year)			
							Red Meat		Poultry	
	Corn	Wheat	Soybeans	Rice	Tobacco	Cotton	Beef	Pork	Broilers	Turkeys
	<i>million bushels</i>	<i>million bushels</i>	<i>million bushels</i>	<i>million cwt</i>	<i>million pounds</i>	<i>(000) bales</i>	<i>million pounds</i>	<i>million pounds</i>	<i>million pounds</i>	<i>million pounds</i>
1992	1,663	1,354	770	77	574	5,200	1,324	420	1,489	202
1993	1,328	1,228	589	75	458	6,860	1,275	446	1,966	244
1994	2,177	1,188	838	99	434	9,400	1,611	549	2,876	280
1995	2,228	1,241	851	83	462	7,680	1,821	787	3,894	348
1996	1,795	1,001	882	78	485	6,870	1,877	970	4,420	438
1997 ¹	1,625	1,075	960	79	485	7,300	2,118	1,040	4,671	589
1998 ¹							1,985	990	4,750	610

¹ Forecast. NASS, WAOB, & ERS (Information Hotline 1-800-727-9540)

Value of Farm Real Estate, by State and Region

Region and State	Average Value per Acre as of January 1					1996-97 Change
	1993	1994	1995	1996	1997	
	<i>dollars</i>	<i>dollars</i>	<i>dollars</i>	<i>dollars</i>	<i>dollars</i>	<i>percent</i>
Northeast	2,095	2,311	2,414	2,484	2,599	5.0
Connecticut	5,959	6,495	6,567	6,810	7,500	10.0
Delaware	2,246	2,511	2,689	2,907	3,170	9.0
Maine	1,130	1,232	1,245	1,291	1,300	1.0
Maryland	2,911	3,310	3,707	3,826	4,000	5.0
Massachusetts	4,898	5,339	5,398	5,597	6,200	11.0
New Hampshire	2,256	2,459	2,486	2,578	2,600	1.0
New Jersey	6,942	7,407	8,052	8,172	8,290	1.0
New York	1,237	1,383	1,380	1,333	1,390	4.0
Pennsylvania	2,056	2,247	2,339	2,505	2,630	5.0
Rhode Island	6,304	6,871	6,947	7,204	7,900	10.0
Vermont	1,342	1,463	1,479	1,534	1,550	1.0
Lake States	956	986	1,048	1,126	1,205	7.0
Michigan	1,131	1,214	1,329	1,470	1,600	9.0
Minnesota	910	914	936	976	1,040	7.0
Wisconsin	925	968	1,065	1,175	1,250	6.0
Com Belt	1,235	1,331	1,448	1,578	1,699	8.0
Illinois	1,548	1,694	1,863	2,064	2,210	7.0
Indiana	1,395	1,504	1,654	1,801	1,970	9.0
Iowa	1,212	1,281	1,349	1,442	1,570	9.0
Missouri	774	825	880	948	1,010	7.0
Ohio	1,456	1,593	1,800	1,989	2,110	6.0
Northern Plains	401	432	458	476	504	6.0
Kansas	463	503	535	553	575	4.0
Nebraska	514	562	596	632	680	8.0
North Dakota	335	353	373	383	410	7.0
South Dakota	273	286	302	310	325	5.0
Appalachia	1,300	1,336	1,436	1,597	1,685	6.0
Kentucky	1,077	1,136	1,250	1,377	1,450	5.0
North Carolina	1,573	1,609	1,749	1,970	2,050	4.0
Tennessee	1,245	1,250	1,336	1,526	1,650	8.0
Virginia	1,636	1,690	1,771	1,925	2,030	6.0
West Virginia	849	869	910	965	1,000	4.0
Southeast	1,345	1,427	1,533	1,631	1,683	3.0
Alabama	1,000	1,117	1,262	1,387	1,480	7.0
Florida	2,037	2,165	2,219	2,306	2,300	0.0
Georgia	1,131	1,154	1,256	1,358	1,430	5.0
South Carolina	1,137	1,204	1,337	1,363	1,400	3.0
Delta States	866	912	972	1,009	1,041	3.0
Arkansas	880	927	983	989	1,010	2.0
Louisiana	972	1,000	1,082	1,176	1,230	5.0
Mississippi	777	836	886	917	950	4.0
Southern Plains	498	521	550	565	594	5.0
Oklahoma	496	517	547	547	570	4.0
Texas	499	522	550	570	600	5.0
Mountain	290	319	346	379	403	6.0
Arizona	316	325	347	399	420	5.0
Colorado	426	479	520	558	590	6.0
Idaho	682	774	836	905	960	6.0
Montana	227	254	277	289	305	6.0
Nevada	252	268	289	332	350	5.0
New Mexico	194	208	225	258	280	9.0
Utah	491	537	606	697	750	8.0
Wyoming	159	180	192	206	220	7.0
Pacific	1,453	1,510	1,549	1,676	1,774	6.0
California	2,213	2,213	2,215	2,404	2,510	4.0
Oregon	663	747	844	928	1,000	8.0
Washington	892	1,025	1,065	1,117	1,230	10.0
48 States	736	782	832	890	942	6.0

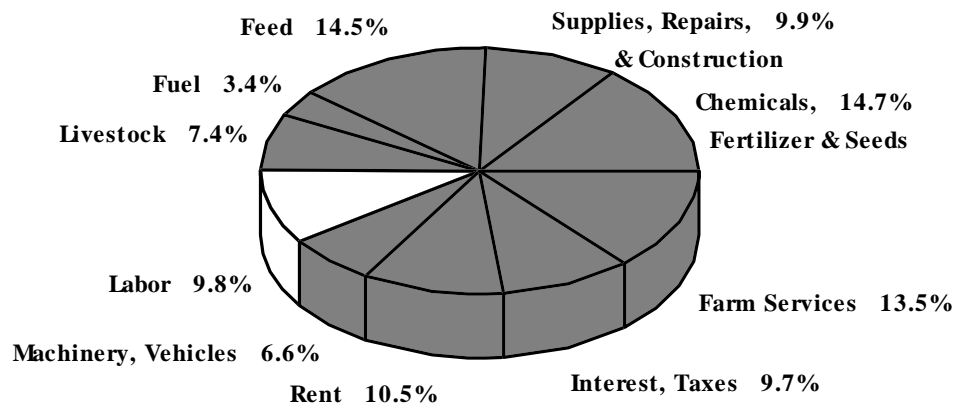
NASS, Livestock and Economics Branch, (202) 720-3570

Farm Production Expenses

Category and Expense	1992	1993	1994	1995	1996	1997 ¹
	<i>million dollars</i>	<i>million dollars</i>	<i>million dollars</i>	<i>million dollars</i>	<i>million dollars</i>	<i>million dollars</i>
Farm-origin Inputs, Total	38,620	41,193	41,277	41,627	42,494	45,560
Feed purchased	20,133	21,431	22,631	23,829	25,234	25,173
Livestock and poultry purchased	13,574	14,597	13,270	12,335	11,148	13,995
Seed purchased	4,913	5,165	5,376	5,463	6,112	6,391
Manufactured Inputs, Total	20,100	20,471	21,717	23,207	25,195	25,218
Fertilizer and lime	8,331	8,398	9,180	10,033	10,934	10,824
Fuels and oils	5,298	5,350	5,312	5,448	5,736	5,664
Pesticides	6,471	6,723	7,225	7,726	8,525	8,730
Interest Charges, Total	11,137	10,822	11,736	12,727	13,219	13,400
Short-term interest	5,395	5,333	5,954	6,685	6,862	7,000
Real estate interest ²	5,742	5,489	5,782	6,042	6,357	6,400
Other Operating Expenses, Total	44,855	49,821	53,149	56,016	57,147	63,012
Repair and maintenance ²	8,471	9,193	9,083	9,458	10,304	10,656
Contract and hired labor	14,000	15,006	15,309	16,316	17,348	18,207
Machine hire and custom work	3,782	4,420	4,790	4,792	4,692	4,860
Marketing, storage, and transportation	4,541	5,648	6,821	7,180	6,818	7,193
Miscellaneous operating expenses ³	14,061	15,554	17,146	18,270	17,985	18,074
Other Overhead Expenses, Total	35,615	35,564	36,898	37,615	40,051	40,129
Capital consumption ²	18,310	18,378	18,688	18,914	18,930	19,005
Taxes ²	6,117	6,177	6,490	6,717	6,828	6,994
Net rent to nonoperator landlords	11,188	11,009	11,720	11,984	14,293	14,130
Total Production Expenses	152,936	160,548	167,457	174,161	181,303	186,438

¹ Forecast. ² Includes operator dwellings. ³ Includes operator dwellings, other livestock purchases, daily assessments, and feeding fees paid by non-operators. ERS, Chris McGath (202) 219-0808

**Farm Production Expenditures:
Major Input Items By Percent of Total
United States, 1996**



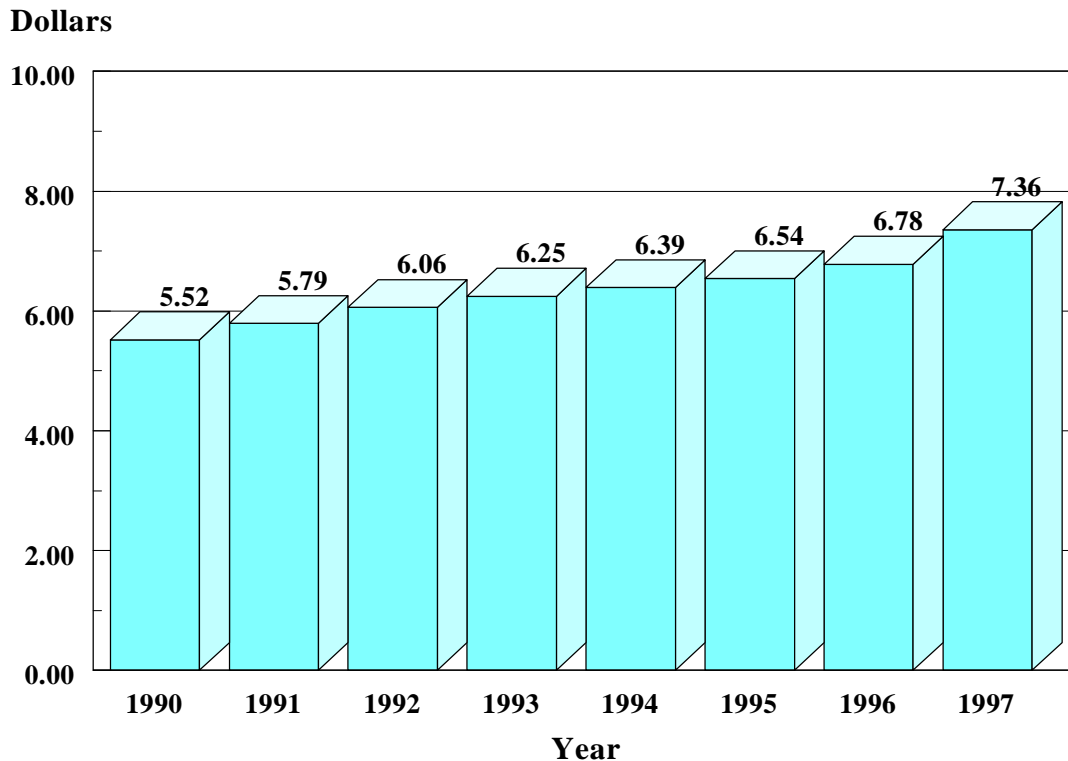
NASS, Livestock & Economics Branch, (202) 720-3570

Wage Rates for Hired Farm Workers, United States, 1993-97

Year	Average Annual Wage Rate by Type of Worker ¹					Method of Payment			
	All Hired	Field and Livestock			Super- visory ²	Other ²	Hourly	Piece Rate	Other
		Field	Lvstk ²	Combined					
	<i>dollars per hour</i>	<i>dollars per hour</i>	<i>dollars per hour</i>	<i>dollars per hour</i>	<i>dollars per hour</i>	<i>dollars per hour</i>	<i>dollars per hour</i>	<i>dollars per hour</i>	<i>dollars per hour</i>
1993	6.25	5.90	5.59	5.81	9.65	7.60	5.95	6.42	6.88
1994	6.39	6.02	5.76	5.95	9.91	7.87	6.06	7.02	7.04
1995	6.54	6.13	5.99	6.09	10.27	8.11	6.19	7.03	7.29
1996	6.78	6.34	---	6.33	---	---	N/A	N/A	N/A
1997	7.36	6.66	---	6.64	---	---	N/A	N/A	N/A

¹ Excludes Alaska. ² Not published on annual basis after 1995. N/A No longer estimated. NASS, Livestock & Economics Branch, (202) 720-3570

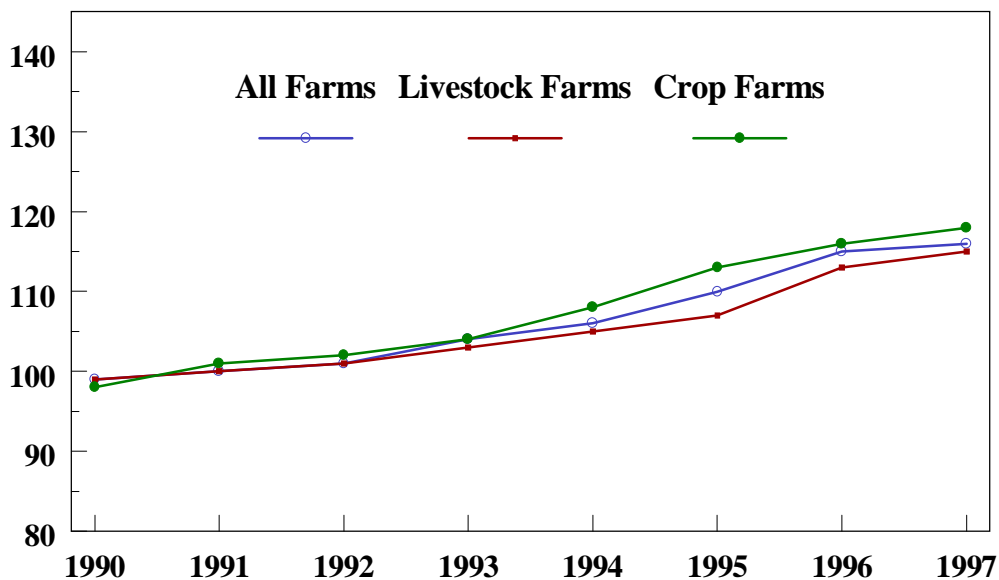
**Hired Farm Workers: Average U.S. Wage Rates
1990-1997**



NASS, Livestock & Economics Branch, (202) 720-3570

Index of Average Prices Paid by Farmers, 1990-1997 United States

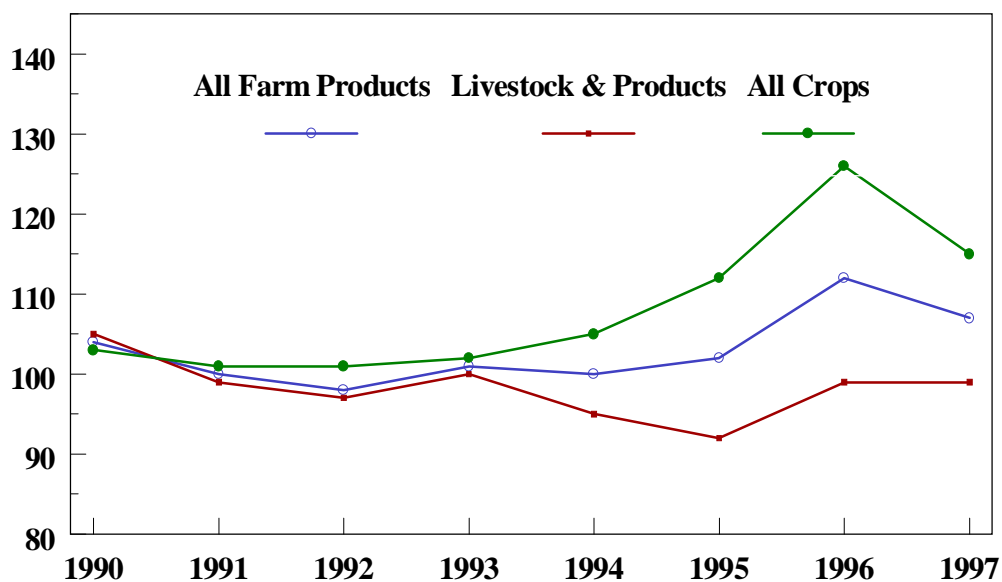
Percent (1990-92=100)



NASS, Livestock & Economics Branch, (202) 720-3570

Index of Average Prices Received by Farmers, 1990-1997 United States

Index Values (1990-92=100)



NASS, Crops Branch, (202) 720-2127

Grazing Fees for Cattle, Selected States and Regions

State or Region	Average Monthly Rate by Payment Method ¹					
	Animal Unit ²		Cow-Calf		Per Head	
	1996	1997	1996	1997	1996	1997
	<i>dollars</i>	<i>dollars</i>	<i>dollars</i>	<i>dollars</i>	<i>dollars</i>	<i>dollars</i>
Arizona	6.50	6.50	8.00	8.50	7.00	7.90
California	10.10	10.60	12.20	13.00	11.90	12.00
Colorado	11.40	11.30	13.20	13.60	10.70	10.60
Idaho	10.20	10.40	12.20	12.50	10.40	11.20
Kansas	12.00	10.50	14.00	12.80	11.00	9.80
Montana	11.80	12.30	13.20	13.90	11.70	13.20
Nebraska	18.00	18.80	21.40	22.20	18.00	18.50
Nevada	8.80	9.00	11.50	12.00	9.30	9.50
New Mexico	8.87	8.79	11.30	10.30	9.37	9.00
North Dakota	10.60	9.30	12.50	11.00	10.30	10.00
Oklahoma	7.00	8.00	8.50	8.70	8.00	7.50
Oregon	10.00	10.20	10.80	11.50	9.45	9.85
South Dakota	13.20	14.00	15.00	16.40	14.80	14.40
Texas	8.00	9.00	9.20	10.00	8.50	8.00
Utah	9.75	9.00	11.00	11.10	11.00	11.00
Washington	8.70	9.00	9.00	9.60	10.30	9.30
Wyoming	11.00	12.00	13.00	14.00	11.10	12.20
17 Western States	10.50	11.00	12.20	12.70	10.80	10.80
16 Western States (excl. TX)	11.40	11.70	13.40	13.70	11.80	11.80
11 Western States ³	10.40	10.70	12.10	12.60	10.70	11.30
9 High Plains States ⁴	10.50	11.00	12.30	12.80	10.80	10.60

¹ Averages based on June Agricultural Survey indications of monthly lease rates for private, non-irrigated grazing land. Rates over \$10.00 are rounded to the nearest dime. ² Includes animal unit plus cow-calf rates. Cow-calf rate converted to animal unit (aum) using 1 aum = cow-calf rate x 0.833. ³ Eleven Western States: AZ, CA, CO, ID, MT, NV, NM, OR, UT, WA, WY.

⁴ Nine High Plains States: CO, KS, NE, NM, ND, OK, SD, TX, WY. NASS, *Livestock & Economics Branch*, (202)720-3570

Meat Consumption

Year	Consumption per Capita, Retail Weight Basis						
	Broilers	Beef	Pork	Turkeys	Veal	Lamb and Mutton	Total ¹
	<i>pounds</i>	<i>pounds</i>	<i>pounds</i>	<i>pounds</i>	<i>pounds</i>	<i>pounds</i>	<i>pounds</i>
1980	45.8	76.6	57.3	10.3	1.5	1.4	195.1
1985	51.0	79.2	51.9	11.6	1.9	1.5	199.2
1990	59.5	67.8	49.8	17.6	1.1	1.4	199.2
1991	62.1	66.8	50.4	17.9	1.0	1.4	201.5
1992	65.9	66.5	53.1	17.9	1.0	1.4	207.7
1993	68.4	65.1	52.4	17.7	0.9	1.3	207.6
1994	69.9	67.0	53.1	17.8	0.9	1.2	211.5
1995	68.8	67.5	52.5	17.9	1.0	1.2	210.3
1996	70.8	68.2	49.1	18.5	1.2	1.1	209.7
1997	72.4	67.0	48.7	17.7	1.0	1.1	208.3
1998 ²	75.4	67.8	52.7	17.7	0.8	1.1	216.0

¹ Total includes other chicken. ² Forecast. World Agricultural Outlook Board, (202) 720-9805