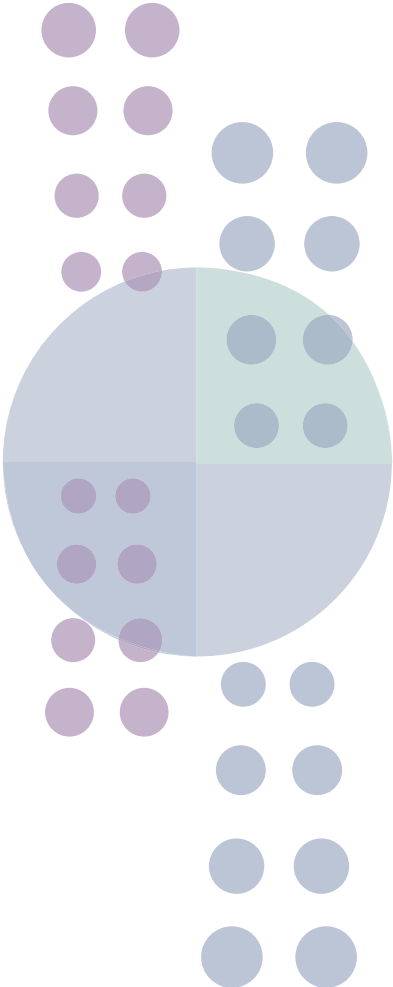


**The Cooperative State Research,
Education, and Extension Service**

(CSREES) advances knowledge for agriculture, the environment, human health and well-being, and communities. CSREES views agriculture as knowledge-based, global, and sustained by the innovation of scientists and educators. CSREES is committed to supporting programs with results that serve all Americans and improve lives worldwide.



CSREES is USDA's primary extramural research and education agency and is the Federal partner for the Cooperative Extension System. It manages Federal resources while working through partnerships—with Federal, university-based, and citizen partners. Through national program leadership and efficient administration of Federal assistance, CSREES supports research and educational programs that serve the public interest and help consumer economic well-being by expanding opportunities for agricultural producers and rural America; protecting the Nation's food supply; enhancing nutrition and health for young and old; improving the natural resource base and environment throughout the country; and improving the quality of life for Americans everywhere. The Cooperative Extension System is the Nation's largest non-formal educational network providing objective, research-based educational programs to citizens. This transfer of knowledge from the laboratory to the field, home, or community assures that the best information is in the hands of consumers and producers



as they solve everyday problems or make critical life decisions. CSREES is also the national headquarters for the 4-H youth development program's 7,000,000 members and 650,000 volunteer leaders.

CSREES has wide-ranging partnerships with over 130 colleges of agriculture; 59 agricultural experiment stations; 57 cooperative extension services; 63 schools of forestry; eighteen 1890 land-grant colleges and universities including Tuskegee University and West Virginia State University; 27 colleges of veterinary medicine; 42 schools and colleges of family and consumer sciences; thirty-one 1994 Native American land-grant institutions; 17 Alaskan Native-serving and Hawaiian Native-serving institutions; over 160 Hispanic-serving institutions; and numerous other institutions and organizations.

CSREES collaborates with public and private organizations to deliver innovative programs nationwide. From agro-security programs that establish a system of diagnostic laboratories and protect our Nation's food supply to nutrition education for limited-resource families delivered through the Expanded Food and Nutrition Education Program (EFNEP), CSREES partners creatively with the vast land-grant university system. Another unique partnership between CSREES and the Easter Seals Society brings the Agrability program to persons with disabilities working in agriculture.



CSREES administers a broad portfolio of peer-reviewed, competitive programs drawing scientists and educators from across the Nation to apply their skills to address agricultural problems and opportunities. They include the following:

- **The National Research Initiative** supports investigator-initiated, basic research and integrated programs, related to animal, plant, environmental, food and economic systems.
- **The Integrated Research, Education, and Extension Program** supports projects that integrate research, education, and extension with real-world solutions for American farmers and consumers. These programs address critical issues such as agro-security, food safety, and natural resources management.



- **The Small Business Innovation Research Grants Program** assists small businesses applying research to help solve problems that benefit the public
- **Higher Education Grants** support training and education of future food and agricultural scientists. These programs contribute to innovations in curricula, faculty development, recruitment, community outreach, and internationalization of teaching programs.
- **The Outreach and Assistance for Socially Disadvantaged Farmers and Ranchers Competitive Grants Program** supports a wide range of outreach and assistance activities in farm management, financial management, marketing, and other areas to encourage and assist socially disadvantaged farmers and ranchers.

- **The Community Food Competitive Grants Program** helps communities develop innovative ways of providing food to those most in need.



CSREES advances knowledge on numerous issues including agro-security, integrated pest management education, biofuels, sustainable agriculture, children, youth and families at risk, and globalization of research and education programs. Many of these activities are conducted through long-standing collaborations and with co-funding from Federal agencies including the Departments of Defense and Energy, the Environmental Protection Agency, the National Aeronautics and Space Administration, the National Science Foundation, the National Institutes of Health and the State Department. USDA's mission is shared with many others and CSREES works to unite these partners to achieve mutual goals.

Go to <http://www.csrees.usda.gov>
for more information.

The U.S. Department of Agriculture (USDA) prohibits discrimination in all its programs and activities on the basis of race, color, national origin, gender, religion, age, disability, political beliefs, sexual orientation, and marital or family status. (Not all prohibited bases apply to all programs.) Persons with disabilities who require alternative means for communication of program information (Braille, large print, audiotape, etc.) should contact USDA's TARGET Center at (202) 720-2600 (voice and TDD).

To file a complaint of discrimination, write USDA, Director, Office of Civil Rights, Room 326-W, Whitten Building, 14th and Independence Avenue, SW, Washington, DC 20250-9410 or call (202) 720-5964 (voice or TDD). USDA is an equal opportunity provider and employer.

April 2004



United States Department of Agriculture

Cooperative State Research, Education and Extension Service

Creating Knowledge to Improve
the Lives of Americans

