



Maurice Rosenblatt  
President

Judith Lyons Wolf  
Treasurer

James Fitzpatrick  
Counsel

Curtis B. Gans  
Director

Advisory Board

Josiah Lee Auspitz  
The Hon. Michael D. Barnes  
Jack A. Blum  
Walter Dean Burnham  
David Cohen  
Edward Costikyan  
Mitchell E. Daniels, Jr.  
Barbara S. Davies  
William Dodds  
Sophie Engelhard Craighead  
Leo Estrada  
Leslie Francis  
Marie Garber  
David R. Gergen  
Peter Hart  
Robert Healy  
Ruth Hinerfeld  
William Holayter  
Eugene M. Lang  
William Lucy  
Jeffrey Lynford  
Lawrence Mead  
Karen Paget  
David Paletz  
Dorothy S. Ridings  
Ted Van Dyk  
Carl Wagner  
Anne Wexler  
Richard Whalen

Founding Chairman  
The Hon. Terry Sanford

**(PLEASE READ NOTE 3 ABOUT THE QUALITY OF  
REGISTRATION STATISTICS COMING FROM THE STATES)**

**FOR RELEASE:**

**Immediate**

**For Further Information, Contact:**

Curtis Gans (202) 546-3221  
(703) 478-1943

**REGISTRATION RISES MODERATELY  
BATTLEGROUND STATES LEAD THE WAY  
INDEPENDENTS GAIN MOST**

**WASHINGTON, October 28** – Based on final and official registration statistics from 26 states, voter registration increased nationally a moderate and estimated three percentage points since 2000, with battleground states providing most of the increase.

–Since the states which have not reported have, by history, tended to report greater registration gains than the states which report this early, it is likely that when final figures come in from all states, more than 143 million citizens will have registered, 10 million more than 2000 and at least six million more than the number which would have been registered had registration rates remained constant.

–Registration increases in battleground states were geometrically higher than the increases in non-battleground states.

–While registration increased modestly (very modestly) in percentage terms for both Democratic and Republican parties, the greatest increase came among those who were not affiliated with either party.

**Committee for the Study of the American Electorate**

PMB 294  
Suite 900

601 Pennsylvania Avenue, N.W., South Building  
Washington, D.C. 20004

(P) 202 546-3221 • (F) 202 546-3571 • (e-mail) [csnag@erols.com](mailto:csnag@erols.com)

–While registration is often not a good harbinger of turnout (in 1996 and 1998, registration went up and turnout went down; and in 2000 and 2002, registration went down and turnout went up), there is reason to believe that this year’s increased registration, coupled with heightened voter interest and the intense feelings generated by the 2004 Presidential campaign, will produce a substantially higher turnout this year.

These are a few of the tentative conclusions of a report on 2004 registration based on final and official statistics provided by 26 states – sufficient to provide some guidance as to national registration – released today by the non-partisan Committee for the Study of the American Electorate.

Among the other findings in this report:

–Registration increased in 18 states, but decreased in eight states. The overall registration level in this election is likely to be 71 percent of eligible citizens, compared to 68 percent of citizens in 2000.

–Registration increased by 3.9 percentage points in the 12 battleground states which had final figures for this report. While it only increased by 0.1 percentage point in the 14 non-battleground states which reported their final figures.

–Democratic registration increased by a minuscule 0.3 percentage points in the 17 states which have partisan registration and have reported their final figures, but their increase was greater in battleground states (0.8 percentage points) than in non-battleground states (minus 0.2).

–While the GOP reported a slightly greater increase in registration (0.9 percentage points) in the partisan registration states which have reported, their increases were greater in non-battleground states (1.0 percentage point) than in battleground states (0.8).

–Those who registered for neither major political party recorded the greatest increase in registration (2.4 percentage points). Their increase was substantially greater in battleground states (2.9 percentage points) than in non-battleground states (2.0 percentage points). The level of non-major party affiliated registrants has reached 21.9 percent in the states which have reported, marking the 11<sup>th</sup> straight election of increase, from a level of 1.6 percent of the eligible electorate in 1960.

–The Democratic registration level in these states at 37.3 percent is nearly 25 percent lower than the 49 percent who were registered Democratic nationally in 1964.

–The greatest increases in registration were recorded in Missouri (up 9.8 percentage points), Florida (8.2), West Virginia (5.9), Virginia (5.3), Pennsylvania (5.1), New Mexico (4.7), Iowa (4.5) and New York and New Jersey (4.4). In all of these states which have partisan registration, registration as unaffiliated grew more than registration for either party.

–The greatest increases in Democratic registration were in New York and Pennsylvania (up 2.2 percentage points), Florida (1.8), and Iowa (1.2).

–The largest increases in Republican registration were in Kentucky (3.8 percentage points), West Virginia (2.4), Florida (2.0), and Louisiana (1.8). (Alaska actually recorded a larger gain for the GOP, but since Alaska’s registration figures exceed the voting age population, anything the state reports needs to be taken with a grain of salt.)

–The Democrats outregistered the Republicans in Iowa and Pennsylvania. The GOP outregistered Republicans in Florida, New Mexico, Nevada and West Virginia.

The likely explanations for the surge in registration for citizens not affiliated with either major party are two-fold: 1. that a large number of younger citizens, below the age of 30, with no historic interest in parties have been registered this year; and 2. the decline in party strength and the misalignment of the two parties are driving more people towards independent status.

While increased registration does not normally predict higher turnout, it is likely this year that turnout will increase substantially, even among the younger new registrants, normally a low voting group. In public opinion polls, voter interest is about on a par with interest in the 1992 election when 58.1 percent of citizen eligibles turned out. Viewership of the debates was nearly as high as in 1992 with many more compelling, competing attractions. And the intense feelings generated by President Bush and this election are perhaps higher than any time since 1968. In 2000, fifty four percent of the electorate and 105, 400,000 voters went to the polls. It is likely that 1992 is a benchmark for this year’s turnout and that it will equal or exceed the 1992 percentage. It is likely that 117.5 – 121 million voters will vote (or 58-60 percent of eligibles). If turnout exceeds 58.1 percent of eligibles, it will be the highest since 1968 when 61.9 percent voted. In this election, the larger the turnout, especially in battleground states, the more likely the results will favor Sen. John Kerry. While the feelings on both sides of the President George W. Bush divide are intense, there is only a limited amount of upward additional voting groups GOP can expect to add to their 2000 vote total – some portion of the four million evangelical fundamentalists that Bush political advisor Karl Rove has been targeting, a higher military vote and people in the rural areas in which the President has been lately campaigning. But the GOP also stands to lose some of its moderate and liberal Republican support. Other new voters are likely to be Democratic and recent polls of new voters tend to show a nearly 20 point Kerry advantage among them. If they turn out, as the data suggests they may, they could be decisive.

## **DEMOGRAPHIC DATA:**

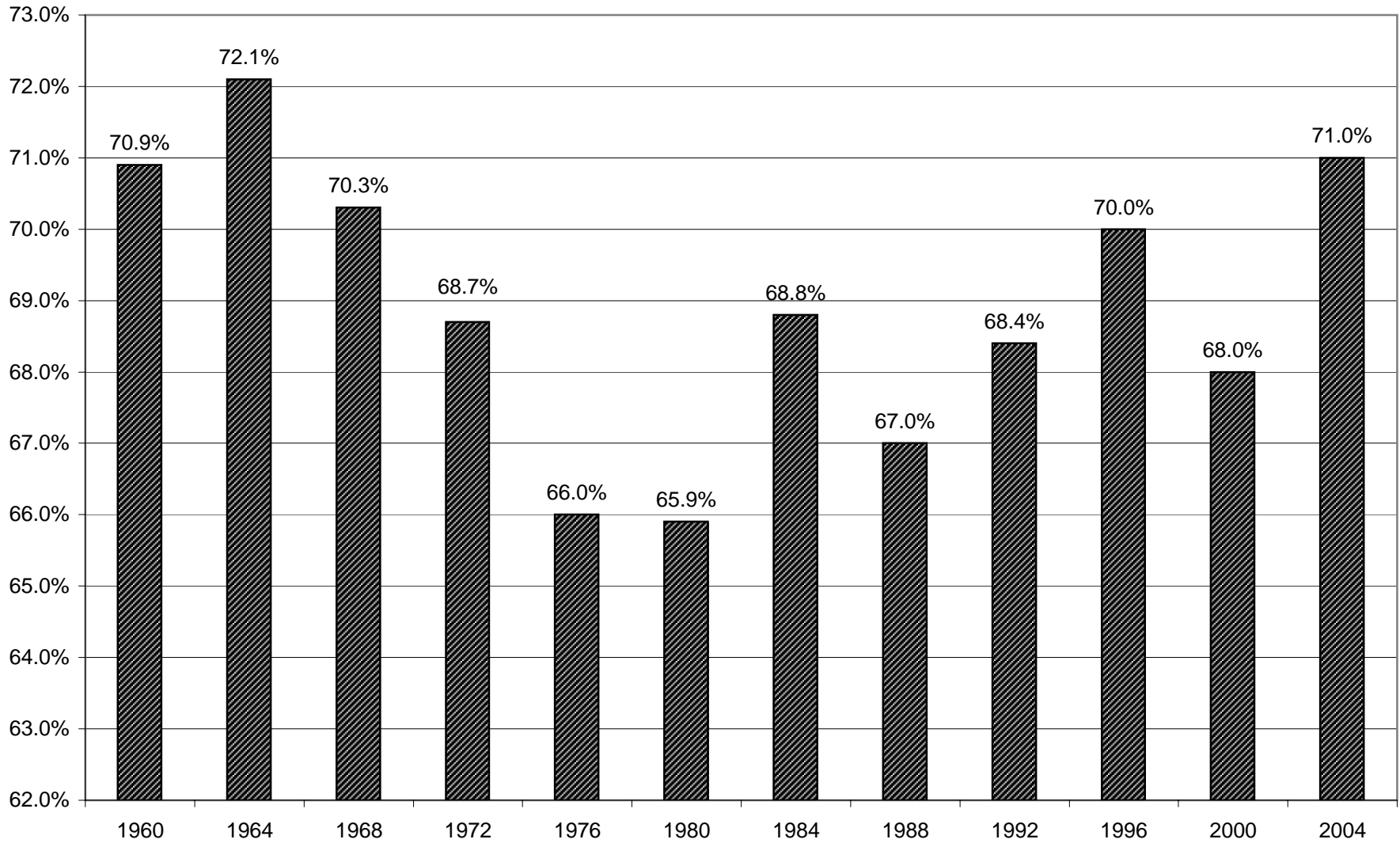
At the end of this report are two charts which show the turnout rates since the 1960s for various demographic groups in Presidential elections and what portion of the electorate and voting electorate they comprise. This represents an update of figures that CSAE has previously presented utilizing a different method of adjusting for the differences between actual voting data and survey response in the Census’ biennial P-20 series on registration and voting of the Current

Population Survey from whence this demographic data is derived. (See Note 4).

Included in the graphs are the turnout rates since 1964 by age, which shows decreases for every age group below 65 with the size of decrease greater as one goes down the age ladder. The only really significant increase in among those over 75, whose causality is probably modern medicine in enabling people who were previously too infirm to vote.

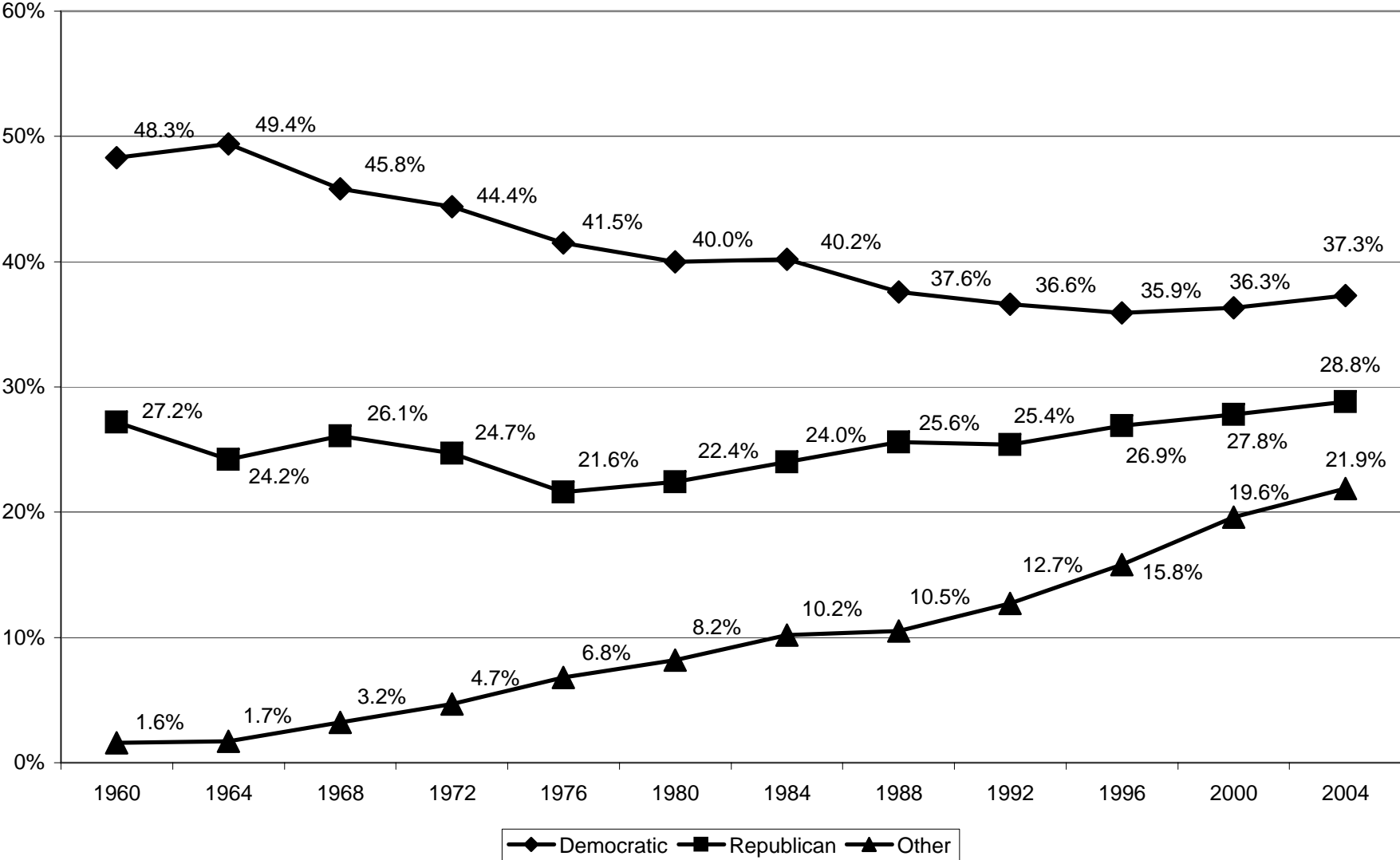
# **I. GRAPHS**

### Overall Registration: 1960 to 2004



2004 estimate based on data from 26 states

### Partisan Registration: 1960 to 2004



2004 estimate based on data from 17 states

## **II. NOTES AND SUMMARY CHARTS**



## NOTES AND SUMMARY CHARTS

**1. What is Turnout:** Turnout should be a simple calculation in which the numerator is the number of votes cast and the denominator is the number of citizens eligible to vote. But because of various anomalies in election statistics, some of which are outlined in detail below, this calculation is more complicated. By common usage, the numerator in every Presidential election year is the vote for President (even though that tally is usually about one percentage point lower than the actual number of citizens who go to the polls. It is lower because many states, although an ever-diminishing number, do not keep records of all those who go to the polls, the total ballots cast). In mid-term elections, the numerator is the total of votes for the statewide race in each state which draws the highest number of votes and the aggregate total of votes for U.S. House of Representatives in those states which do not have statewide races. (This total tends to be between 1 and 1.5 percentage points lower than the actual total ballots cast but is used for the same reasons – that many states do not compile total ballots cast figures.)

Turnout is **NOT** the percentage of those registered who voted. There are three basic reasons for this: a. Using registration as a denominator does not account for the whole of the electorate, including those who are not registered. Thus, it gives a false picture of true citizen engagement. b. Changes in registration law can dramatically affect the figures. If the nation adopts, as it did, a registration law that provides for national mail registration, registration at motor vehicle bureaus and at social service agencies, registration will go up but turnout of those registered will decline artificially by a greater amount than it does when using the entire eligible electorate as a denominator. c. Registration figures are subject to the fluctuations of election administration. If a state conducts a thorough purge of its registration lists close to election, its registration figures will be lower and thus its percentage of registered voting will be higher. But if registration lists are not so purged, as they are not in many states, the figures for registration will be higher and the turnout based on these inflated registration figures will be lower. Consider how distorted a turnout percentage using registration as a base would be in a state such as Alaska, which because of lack of regular list cleaning and potential flaws with the Census Bureau's estimates of the state's eligible population, registration figures are regularly in excess of 100 percent of the eligible vote.

**2. The Eligible Vote – The Denominator for Determining Turnout:** The eligible vote in this report is the number of people residing in the United States who are 18 years of age or over minus the number of non-citizens residing in the United States who are 18 years of age and over as of November 1. It is an interpolated figure from the 2000 Census, based on the methodology outlined below.

For years, CSAE and every other reputable organization working in this field had used the Census Bureau's estimates of November age-eligible population (VAP) to determine turnout. That figure came under legitimate criticism because it included non-citizens; convicted felons (in most states) and, in some states, ex-felons; and people deemed mentally incompetent in institutions who could not vote and did not include citizens residing in other countries, citizens

naturalized during the election year and the citizen portion of the Census' undercount, all of whom could vote but were not part of the VAP estimate. The Census Bureau has ceased providing its VAP estimates.

For years also, Dr. Walter Dean Burnham, professor emeritus at the University of Texas at Austin, has been producing a denominator of age-eligible citizens (age-eligible population minus age-eligible non-citizens, interpolated by state and nation from and between decennial Censuses). After some study of this matter, CSAE has come to believe that this denominator is the best for determining turnout, subject to the caveat below. It has come to this belief because of two factors:

1. Available data. One does not determine turnout simply for any given year but also as an historical comparison with previous years. Data for several of the issues involving the inadequacy of the age-eligible population (VAP) figures are either simply not available, not available in a timely manner, not available over a given period of history or not allocatable to the states. Data on convicted and incarcerated felons is only available for a fairly recent time period. State laws on whether convicted felons and ex-felons can vote are changing and have changed over time. There is no accurate set of figures on those deemed mentally incompetent. The number of American citizens residing abroad is ascertainable but the number of age-eligible has to be estimated and there are no figures which allow the allocation of these citizens by state. Naturalization figures come in too late, often a year or two after the election year, to be usable in any current population accounting. And while any given Census undercount can be allocated by state, one can only estimate how much of that undercount is of citizens as opposed to non-citizens.

2. The balance of the figures: In studying this statistical problem, CSAE has found that the most important issue is that of non-citizens. If one wants to have a relatively accurate picture of turnout, one must eliminate the non-citizens from the age-eligible population. On the other hand, the other adjustments to the denominator would not substantially differ from the denominator of citizen age-eligible population. In pursuing its inquiry into this topic, CSAE found that the factors which would lower the denominator – felons, ex-felons and people deemed mentally incompetent who can't vote – are roughly equal to two of the factors which would increase the denominator – citizens living in other countries and naturalization who could vote. If one added a ballpark figure for the number of citizens in the undercount who could vote, the factors in those years of an undercount, other than non-citizens, which would increase the denominator exceeds those which would reduce it.

The one caveat in adopting the Burnham methodology lock, stock and barrel is that Burnham interpolates from Census to Census. These Censuses are accurate as of April 1 of each decennial year for all of the past 50 years. (In prior years, Census results captured the population as of varying months.) In order to have more accurate figures for November, CSAE has, using the same methodology, projected citizen population to November. Thus, CSAE used for reports on primaries the April figure for age-eligible citizen population, but is using the November figure for this report and any others relating to the general election.

## Methodology

Since the decennial census population figures are accurate as of April 1 in each census year, the VAP Burnham dataset calculates the difference in the required census figures between a base census year and the same figures as reported in the following census. To estimate the voting age population for the years between the censuses, the difference between them is simply multiplied by the number of months that have passed beyond April 1 of the base year and then added to the base year figure. For example, to arrive at the April 1, 1992 voting age population, the difference between the April 1, 1990 census population and the April 1, 2000 census population is multiplied by 24/120ths (for the 24 out of 120 months between the census counts) and added to the April 1, 1990 figure.

The process for arriving at the CSAE November Eligible figures is the same, except that the data is projected forward to November instead of April. To accomplish this, the multiplier is simply changed to the number of months that have passed since April of the base census year. For instance, to calculate the November 1996 voting age population, the difference between April 1, 1990 and April 1, 2000 is multiplied by 79/120ths and added to the April 1, 1990 count. The same interpolation process is applied to the decennial census counts of non-citizens of voting age in each state. Once estimates of the total voting age population and the non-citizen voting age population for each state have been calculated, the non-citizen figure is simply subtracted from the total to arrive at the appropriate figure.

Since the last decennial census occurred in 2000, it is necessary to project the figures forward to arrive at the voting age population for 2002 and 2004. To accomplish this, the difference between the 1990 and 2000 decennial censuses is used to establish a rate of growth. This rate of growth is then used to project forward based on the number of months passed since April 1990 out of the 120 months between the censuses. For instance, to obtain the voting age population for April 2004, the difference between April 1, 1990 and April 1, 2000 is multiplied by 168/120 and added to the April 1, 1990 total.

**3. Registration:** The registration figures for the individual states in the back of this report are final, official, certified by the chief election officer of each state and totally misleading.

In any given election the official registration figures provided by the states are inaccurate because they contain the names of people who have either died or moved but have not been removed from the registration rolls. The degree of inaccuracy in any given state would pend both on when they conducted a list cleaning and how thorough such a list cleaning was. A state which conducted a thorough list cleaning close to an election would likely have fewer names that were not eligible. But because of non-thorough and early list cleaning, some states, notably Alaska, Maine and Mississippi, often have registration rolls which exceed 100 percent of the Voting Age Population. Prior to the enactment of the NVRA, it was at least possible to make a national estimate of registration which would be, on the average, ten percent lower than the official figures provided by the states.

But the NVRA mandated that states must keep even those who have moved or died on their registration rolls for at least two federal elections, even if the people whose names have remained

on the rolls have been determined to have moved or died. And, this, in turn, accounts for the substantially higher official figures than prior to the NVRA's implementation.

While states cannot remove names, they can transfer those for whom they have evidence have died or moved to an inactive list, which they are required by the NVRA to report each biennium by March of the year following a national election. A truer picture can be gleaned from the chart below which compares registration rates based on official figures and rates based on official figures minus those kept on inactive lists. The charts on registration and partisan registration in the summary charts below represent the Committee's best estimate of what actual registration is likely to be, based on the states which have provided final and official registration figures at the time of this report. (Three additional considerations when looking at these statistics: 1. Only 28 states and the District of Columbia have partisan registration and the partisan registration percentages estimated below are based on the raw registration figures. There are no similar corrective inactive lists for partisan registrants and it is likely that were there, the estimates for partisan registration percentages below would be smaller in each category. 2. The percentages of Democratic, Republican and Other registrations do not add up to 100 percent. The balance are unregistered. 3. The partisan percentages are taken from raw official data and thus do not yield the same totals as do the overall percentages).

State	2004 CSAE Nov. Eligible VAP	2004 % VAP Registered	2004 Adjusted Registration	2004 Adjusted % VAP Registered	2000 CSAE Nov. Eligible VAP	2000 Adjusted Registration	2000 Adjusted % VAP Registered	DIFF 04-00	1996 CSAE Nov. Eligible VAP	1996 Adjusted Registration	1996 Adjusted % VAP Registered	DIFF 04-96	DIFF 00-96
AR	2,057,000	81.94%	1,474,154	71.67%	1,964,000	1,453,345	74.00%	-2.33	1,871,000	1,396,459	74.64%	-2.97	-0.64
AZ	3,768,000	76.88%	2,643,331	70.15%	3,432,000	2,200,314	64.11%	6.04	3,096,000	2,244,672	72.50%	-2.35	-8.39
CO	3,275,000	93.59%	2,317,697	70.77%	3,026,000	2,223,147	73.47%	-2.70	2,778,000	1,850,901	66.63%	4.14	6.84
GA	6,135,000	69.26%	3,448,020	56.20%	5,731,000	3,856,671	67.29%	-11.09	5,326,000	3,811,284	71.56%	-15.36	-4.27
IA	2,190,000	96.19%	1,938,657	88.52%	2,148,000	1,841,346	85.72%	2.80	2,107,000	1,741,969	82.68%	5.85	3.05
LA	3,310,000	87.31%	2,648,763	80.02%	3,211,000	2,552,980	79.51%	0.52	3,113,000	2,460,602	79.04%	0.98	0.46
RI	752,000	91.42%	600,236	79.82%	747,000	655,107	87.70%	-7.88	742,000	602,692	81.23%	-1.41	6.47
SD	569,000	97.09%	502,261	88.27%	549,000	471,152	85.82%	2.45	528,000	460,335	87.18%	1.09	-1.36
TN	4,462,000	83.60%	3,317,999	74.36%	4,234,000	3,181,108	75.13%	-0.77	4,007,000	3,011,195	75.15%	-0.79	-0.02
VA	5,290,000	85.41%	4,181,609	79.05%	5,080,000	3,800,960	74.82%	4.23	4,870,000	3,181,830	65.34%	13.71	9.49
Total	31,808,000	77.64%	23,072,727	72.54%	30,122,000	22,236,130	73.82%	-1.28	28,438,000	20,761,939	73.01%	-0.47	0.81

**4. Adjusted Census Figures:** Over the years, CSAE has attempted to provide figures on the turnout, percentage of the electorate and percentage of the voting electorate of various demographic groups. These estimates were and are based on the Census Bureau's P-20 series on Registration and Voting, a biennial survey of 90,000 respondents, as part of its continuing Current Population Survey. The Census survey estimates of the percentage of those who voted have always exceeded the actual vote count, owing largely to two factors – some who report voting actually did not (but want to be on the right side of things) and the denominator the survey uses (civilian population) is usually smaller than the actual population of those eligible to vote. For years, CSAE had used a formula which for each demographic group subtracted the difference between the overall reported vote and the actual vote and then added the difference between the vote for President (or, in mid-term years, the votes for the highest race in each state) and the total ballots cast in each state (only 31 states provide this figure), since the question being asked by the Census is whether the respondent voted rather than whether they voted for a particular office. In reviewing what it had done in the past, CSAE found that this methodology tended to understate the vote in various demographic groups. Looking at the Census P-20 responses this year, CSAE found that the denominators which were most closely matched were the Census' civilian population and the new CSAE November citizen voting age population (see Note 2 above). So, for the demographic charts in the back of this report, CSAE calculated the difference in reported voting based on the civilian denominator and the actual vote and then added the total ballots cast to more nearly approximate what percentage of each demographic group voted over time.

**5. Acknowledgments:** Primary research for this report was done by Mark P. Harvey, CSAE research associate, who is also responsible for creating the denominator database for the analysis of November turnout. Organizing the analysis for this report was made profoundly easier by a custom database program developed by Samuel Schreiber, CSAE research associate emeritus. CSAE would also like to express its profound gratitude to Dr. Walter Dean Burnham, professor emeritus at the University of Texas at Austin, for sharing his database, helping to devise CSAE's new November denominator for the analysis of registration and turnout and for his continuing help to CSAE's work. The Committee is also grateful to all the state election officials for graciously yielding their registration figures after an unconscionable amount of hounding by CSAE's staff.

**6. Culpability:** The analysis contained in this report has been done by Curtis Gans, CSAE's director, who is solely responsible for any and all errors contained within.

## SUMMARY CHARTS

**1. Overall Registration:** The chart below represents CSAE's best estimate of the percentage of the citizen eligible vote which will be registered in 2004 and were registered in previous years, adjusting for all the problems in registration lists outlined in Note 3 above:

<b>Year</b>	<b>Estimated Number and Percent Registered</b>	
2004	143,000,000	71.0
2000	133,780,000	68.0
1996	132,000,000	70.0
1992	123,649,000	68.4
1988	116,820,000	67.0
1984	114,750,000	68.8
1980	103,500,000	65.9
1976	95,850,000	66.0
1972	92,700,000	68.7
1968	81,000,000	70.3
1964	78,300,000	72.1
1960	74,250,000	70.9

**2. Partisan Registration Trend:** Estimated partisan registration based on raw final and official registration figures available at the time of this release. The other category includes those registered for parties other than the Democratic and Republican parties and those who register without affiliation or as independents.

<b>Year</b>	<b>Democratic</b>	<b>Republican</b>	<b>Other</b>
2004	37.3 (est.)	28.8 (est.)	21.9 (est.)
2000	36.3	27.8	19.6
1996	35.9	26.9	15.8
1992	36.6	25.4	12.7
1988	37.6	25.6	10.5
1984	40.2	24.0	10.2
1980	40.0	22.4	8.2
1976	41.5	21.6	6.8
1972	44.4	24.7	4.7
1968	45.8	26.1	3.2
1964	49.4	24.2	1.7
1960	48.3	27.2	1.6



### **III. OFFICIAL REGISTRATION STATS**

**(See Note 3)**

Total Registration as a Percentage of CSAE Nov Eligibles 2004 vs 2000 - 1984

ST	2004 VAP	2004 Registration	2004	2000		1996		1992		1988		1984	
			% VAP Reg'd	% VAP Reg'd	+/-04-00 Points	% VAP Reg'd	+/-04-96 Points	% VAP Reg'd	+/-04-92 Points	% VAP Reg'd	+/-04-88 Points	% VAP Reg'd	+/-04-84 Points
AK	447,000	469,042	104.93	136.79	-31.86	116.39	-11.46	82.69	22.24	83.25	21.68	97.84	7.09
AZ	3,768,000	2,643,331	70.15	77.35	-7.20	80.74	-10.59	71.12	-0.97	73.47	-3.32	67.18	2.97
AR	2,057,000	1,685,527	81.94	79.22	2.72	74.64	7.30	74.13	7.81	70.64	11.30	69.94	12.00
CO	3,275,000	3,065,227	93.59	94.46	-0.87	82.27	11.32	79.18	14.41	87.40	6.19	74.03	19.56
FL	11,904,000	10,301,290	86.54	78.32	8.22	77.32	9.22	67.31	19.23	67.75	18.79	69.55	16.99
GA	6,135,000	4,248,802	69.26	81.11	-11.85	71.56	-2.30	64.55	4.71	64.84	4.42	65.33	3.93
HI	877,000	647,238	73.80	75.34	-1.54	68.96	4.84	59.25	14.55	59.56	14.24	60.71	13.09
IA	2,190,000	2,106,658	96.19	91.68	4.51	84.31	11.88	82.50	13.69	82.73	13.46	84.09	12.10
KS	1,954,000	1,687,896	86.38	85.10	1.28	77.14	9.24	75.21	11.17	71.40	14.98	74.35	12.03
KY	3,134,000	2,794,286	89.16	90.18	-1.02	82.51	6.65	74.42	14.74	75.22	13.94	76.80	12.36
LA	3,310,000	2,889,981	87.31	86.67	0.64	81.57	5.74	75.97	11.34	75.92	11.39	78.25	9.06
MI	7,289,000	7,164,047	98.29	96.27	2.02	96.05	2.24	90.53	7.76	89.48	8.81	90.25	8.04
MO	4,242,000	4,206,423	99.16	89.41	9.75	83.87	15.29	79.35	19.81	78.78	20.38	81.63	17.53
NE	1,256,000	1,160,199	92.37	88.67	3.70	85.16	7.21	82.09	10.28	79.20	13.17	80.23	12.14
NV	1,528,000	945,981	61.91	65.45	-3.54	67.21	-5.30	66.86	-4.95	54.86	7.05	51.28	10.63
NJ	5,702,000	5,005,969	87.79	83.41	4.38	77.25	10.54	73.32	14.47	73.62	14.17	76.97	10.82
NM	1,322,000	1,051,536	79.54	74.85	4.69	72.16	7.38	65.52	14.02	67.15	12.39	69.25	10.29
NY	12,496,000	11,837,068	94.73	90.36	4.37	81.73	13.00	74.13	20.60	69.86	24.87	74.29	20.44
NC	6,208,000	5,502,937	88.64	88.39	0.25	78.08	10.56	73.61	15.03	70.68	17.96	71.92	16.72
PA	9,230,000	8,315,974	90.10	85.00	5.10	74.89	15.21	66.55	23.55	65.94	24.16	70.53	19.57
RI	752,000	687,488	91.42	88.53	2.89	81.23	10.19	75.18	16.24	75.69	15.73	77.35	14.07
SC	3,120,000	2,256,745	72.33	79.33	-7.00	64.72	7.61	58.07	14.26	57.72	14.61	59.67	12.66
SD	569,000	552,441	97.09	94.88	2.21	90.23	6.86	88.25	8.84	89.31	7.78	90.74	6.35
TN	4,462,000	3,730,058	83.60	80.31	3.29	77.30	6.30	72.13	11.47	67.48	16.12	75.03	8.57
VA	5,290,000	4,517,980	85.41	80.15	5.26	68.23	17.18	65.55	19.86	65.08	20.33	64.77	20.64
WV	1,423,000	1,168,694	82.13	76.22	5.91	70.34	11.79	70.41	11.72	71.75	10.38	75.11	7.02
Overall:	103,940,000	90,642,818	87.21	85.20	2.01	78.83	8.37	72.72	14.49	71.82	15.39	73.88	13.33

Total Registration as a Percentage of CSAE Nov Eligibles 2004 vs 1980 - 1964

ST	2004 VAP	2004 Registration	2004	1980		1976		1972		1968		1964	
			% VAP Reg'd	% VAP Reg'd	+/-04-80 Points	% VAP Reg'd	+/-04-76 Points	% VAP Reg'd	+/-04-72 Points	% VAP Reg'd	+/-04-68 Points	% VAP Reg'd	+/-04-64 Points
AK	447,000	469,042	104.93	95.73	9.20	88.44	16.49	71.95	32.98	—	—	—	—
AZ	3,768,000	2,643,331	70.15	58.92	11.23	61.19	8.96	66.50	3.65	63.97	6.18	69.23	0.92
AR	2,057,000	1,685,527	81.94	73.66	8.28	68.49	13.45	70.94	11.00	73.61	8.33	65.17	16.77
CO	3,275,000	3,065,227	93.59	69.69	23.90	73.95	19.64	77.53	16.06	78.08	15.51	82.16	11.43
FL	11,904,000	10,301,290	86.54	67.70	18.84	66.20	20.34	68.22	18.32	69.41	17.13	71.13	15.41
GA	6,135,000	4,248,802	69.26	64.36	4.90	65.95	3.31	68.84	0.42	68.69	0.57	63.18	6.08
HI	877,000	647,238	73.80	63.33	10.47	63.80	10.00	67.57	6.23	68.87	4.93	61.17	12.63
IA	2,190,000	2,106,658	96.19	82.96	13.23	70.64	25.55	—	—	—	—	—	—
KS	1,954,000	1,687,896	86.38	75.87	10.51	72.13	14.25	69.11	17.27	—	—	—	—
KY	3,134,000	2,794,286	89.16	68.36	20.80	68.69	20.47	64.11	25.05	71.11	18.05	78.89	10.27
LA	3,310,000	2,889,981	87.31	70.77	16.54	70.87	16.44	74.68	12.63	72.79	14.52	63.30	24.01
MI	7,289,000	7,164,047	98.29	89.48	8.81	85.52	12.77	83.05	15.24	81.10	17.19	70.94	27.35
MO	4,242,000	4,206,423	99.16	80.35	18.81	75.48	23.68	—	—	—	—	—	—
NE	1,256,000	1,160,199	92.37	76.79	15.58	79.01	13.36	80.33	12.04	76.29	16.08	—	—
NV	1,528,000	945,981	61.91	51.35	10.56	52.61	9.30	61.29	0.62	69.16	-7.25	72.66	-10.75
NJ	5,702,000	5,005,969	87.79	73.27	14.52	76.32	11.47	77.51	10.28	78.60	9.19	81.75	6.04
NM	1,322,000	1,051,536	79.54	74.68	4.86	68.12	11.42	75.78	3.76	83.17	-3.63	90.10	-10.56
NY	12,496,000	11,837,068	94.73	65.69	29.04	68.66	26.07	77.54	17.19	74.47	20.26	79.42	15.31
NC	6,208,000	5,502,937	88.64	65.44	23.20	65.65	22.99	66.73	21.91	70.99	17.65	—	—
PA	9,230,000	8,315,974	90.10	66.50	23.60	68.75	21.35	72.99	17.11	77.49	12.61	80.61	9.49
RI	752,000	687,488	91.42	80.75	10.67	82.70	8.72	83.10	8.32	83.24	8.18	86.89	4.53
SC	3,120,000	2,256,745	72.33	56.52	15.81	56.23	16.10	58.57	13.76	59.53	12.80	57.10	15.23
SD	569,000	552,441	97.09	92.65	4.44	92.11	4.98	89.56	7.53	90.22	6.87	95.55	1.54
TN	4,462,000	3,730,058	83.60	71.61	11.99	70.73	12.87	72.13	11.47	79.14	4.46	73.57	10.03
VA	5,290,000	4,517,980	85.41	59.94	25.47	59.73	25.68	65.34	20.07	56.01	29.40	52.01	33.40
WV	1,423,000	1,168,694	82.13	74.91	7.22	83.04	-0.91	87.45	-5.32	93.24	-11.11	98.64	-16.51
Overall:	103,940,000	90,642,818	87.21	70.29	16.92	70.44	16.77	73.43	13.78	74.14	13.07	74.69	12.52

Democratic Registration as a Percentage of CSAE Nov Eligibles 2004 vs 2000 - 1984

ST	2004 VAP	2004 Registration	2004	2000		1996		1992		1988		1984	
			% VAP Reg'd	% VAP Reg'd	+/-04-00 Points	% VAP Reg'd	+/-04-96 Points	% VAP Reg'd	+/-04-92 Points	% VAP Reg'd	+/-04-88 Points	% VAP Reg'd	+/-04-84 Points
AK	447,000	70,930	15.87	27.31	-11.44	25.19	-9.32	15.45	0.42	17.09	-1.22	23.14	-7.27
AZ	3,768,000	1,004,739	26.67	29.45	-2.78	29.43	-2.76	30.21	-3.54	31.35	-4.68	30.52	-3.85
CO	3,275,000	936,496	28.60	28.24	0.36	25.89	2.71	26.98	1.62	26.69	1.91	23.50	5.10
FL	11,904,000	4,261,429	35.80	34.03	1.77	35.69	0.11	34.15	1.65	36.57	-0.77	41.34	-5.54
IA	2,190,000	640,040	29.23	28.03	1.20	27.85	1.38	30.83	-1.60	29.88	-0.65	29.15	0.08
KS	1,954,000	453,039	23.19	23.56	-0.37	22.75	0.44	23.37	-0.18	20.36	2.83	—	—
KY	3,134,000	1,615,349	51.54	51.00	0.54	50.82	0.72	49.26	2.28	50.54	1.00	52.00	-0.46
LA	3,310,000	1,603,994	48.46	51.97	-3.51	53.14	-4.68	54.21	-5.75	57.07	-8.61	63.04	-14.58
NE	1,256,000	396,767	31.59	32.05	-0.46	32.27	-0.68	33.57	-1.98	33.34	-1.75	34.35	-2.76
NV	1,528,000	383,951	25.13	27.22	-2.09	28.11	-2.98	30.36	-5.23	25.78	-0.65	26.50	-1.37
NJ	5,702,000	1,163,224	20.40	20.88	-0.48	19.66	0.74	20.23	0.17	21.45	-1.05	23.49	-3.09
NM	1,322,000	533,158	40.33	39.67	0.66	39.42	0.91	38.15	2.18	39.29	1.04	42.58	-2.25
NY	12,496,000	5,534,574	44.29	42.07	2.22	—	—	—	—	—	—	—	—
NC	6,208,000	2,573,732	41.46	44.11	-2.65	42.42	-0.96	44.61	-3.15	46.29	-4.83	50.33	-8.87
PA	9,230,000	3,966,293	42.97	40.81	2.16	36.73	6.24	33.80	9.17	34.44	8.53	38.50	4.47
SD	569,000	191,523	33.66	32.99	0.67	34.90	-1.24	37.39	-3.73	38.25	-4.59	39.40	-5.74
WV	1,423,000	680,464	47.82	47.10	0.72	44.64	3.18	46.23	1.59	47.43	0.39	50.47	-2.65
Overall:	69,716,000	26,009,702	37.31	37.01	0.30	35.06	2.25	34.79	2.52	35.82	1.49	39.35	-2.04

Democratic Registration as a Percentage of CSAE Nov Eligibles 2004 vs 1980 - 1964

ST	2004 VAP	2004 Registration	2004	1980		1976		1972		1968		1964	
			% VAP Reg'd	% VAP Reg'd	+/-04-80 Points	% VAP Reg'd	+/-04-76 Points	% VAP Reg'd	+/-04-72 Points	% VAP Reg'd	+/-04-68 Points	% VAP Reg'd	+/-04-64 Points
AK	447,000	70,930	15.87	25.42	-9.55	25.76	-9.89	20.88	-5.01	—	—	—	—
AZ	3,768,000	1,004,739	26.67	27.97	-1.30	31.91	-5.24	35.18	-8.51	35.74	-9.07	—	—
CO	3,275,000	936,496	28.60	22.15	6.45	25.15	3.45	26.29	2.31	27.27	1.33	—	—
FL	11,904,000	4,261,429	35.80	43.46	-7.66	44.52	-8.72	46.84	-11.04	52.48	-16.68	57.15	-21.35
IA	2,190,000	640,040	29.23	27.14	2.09	25.00	4.23	—	—	—	—	—	—
KS	1,954,000	453,039	23.19	—	—	—	—	—	—	—	—	—	—
KY	3,134,000	1,615,349	51.54	48.11	3.43	47.97	3.57	42.66	8.88	—	—	—	—
LA	3,310,000	1,603,994	48.46	61.25	-12.79	66.33	-17.87	71.62	-23.16	70.87	-22.41	62.10	-13.64
NE	1,256,000	396,767	31.59	33.77	-2.18	36.49	-4.90	36.91	-5.32	34.06	-2.47	—	—
NV	1,528,000	383,951	25.13	27.39	-2.26	31.32	-6.19	35.35	-10.22	40.80	-15.67	46.50	-21.37
NJ	5,702,000	1,163,224	20.40	—	—	—	—	—	—	—	—	—	—
NM	1,322,000	533,158	40.33	46.79	-6.46	44.14	-3.81	48.20	-7.87	55.10	-14.77	61.33	-21.00
NY	12,496,000	5,534,574	44.29	—	—	—	—	—	—	—	—	—	—
NC	6,208,000	2,573,732	41.46	46.58	-5.12	47.32	-5.86	48.95	-7.49	53.64	-12.18	—	—
PA	9,230,000	3,966,293	42.97	35.51	7.46	37.70	5.27	37.20	5.77	37.58	5.39	40.59	2.38
SD	569,000	191,523	33.66	41.83	-8.17	41.25	-7.59	36.26	-2.60	—	—	—	—
WV	1,423,000	680,464	47.82	50.06	-2.24	55.18	-7.36	56.51	-8.69	60.01	-12.19	63.33	-15.51
Overall:	69,716,000	26,009,702	37.31	40.31	-3.00	42.05	-4.74	44.03	-6.72	46.55	-9.24	50.04	-12.73

Republican Registration as a Percentage of CSAE Nov Eligibles 2004 vs 2000 - 1984

ST	2004 VAP	2004 Registration	2004	2000		1996		1992		1988		1984	
			% VAP Reg'd	% VAP Reg'd	+/-04-00 Points	% VAP Reg'd	+/-04-96 Points	% VAP Reg'd	+/-04-92 Points	% VAP Reg'd	+/-04-88 Points	% VAP Reg'd	+/-04-84 Points
AK	447,000	117,445	26.27	18.01	8.26	17.37	8.90	18.14	8.13	17.25	9.02	19.46	6.81
AZ	3,768,000	1,138,714	30.22	33.15	-2.93	32.70	-2.48	32.22	-2.00	33.56	-3.34	29.77	0.45
CO	3,275,000	1,114,576	34.03	33.54	0.49	29.67	4.36	26.50	7.53	28.78	5.25	23.49	10.54
FL	11,904,000	3,892,492	32.70	30.69	2.01	31.67	1.03	27.50	5.20	26.44	6.26	23.65	9.05
IA	2,190,000	644,846	29.45	29.08	0.37	29.12	0.33	25.77	3.68	25.69	3.76	26.15	3.30
KS	1,954,000	779,687	39.90	38.54	1.36	34.94	4.96	32.34	7.56	29.47	10.43	—	—
KY	3,134,000	996,663	31.80	28.04	3.76	25.69	6.11	24.94	6.86	22.14	9.66	22.00	9.80
LA	3,310,000	691,276	20.88	19.09	1.79	17.22	3.66	14.50	6.38	12.47	8.41	8.86	12.02
NE	1,256,000	575,781	45.84	43.92	1.92	42.12	3.72	40.12	5.72	40.13	5.71	40.40	5.44
NV	1,528,000	382,630	25.04	27.28	-2.24	28.47	-3.43	26.33	-1.29	23.25	1.79	21.09	3.95
NJ	5,702,000	884,801	15.52	15.52	0.00	15.50	0.02	13.83	1.69	13.62	1.90	14.91	0.61
NM	1,322,000	338,416	25.60	24.41	1.19	24.28	1.32	22.20	3.40	23.75	1.85	22.14	3.46
NY	12,496,000	3,209,082	25.68	25.44	0.24	—	—	—	—	—	—	—	—
NC	6,208,000	1,898,672	30.58	30.09	0.49	26.36	4.22	23.47	7.11	20.93	9.65	18.44	12.14
PA	9,230,000	3,386,434	36.69	35.51	1.18	32.04	4.65	28.51	8.18	28.26	8.43	28.33	8.36
SD	569,000	238,580	41.93	41.33	0.60	42.41	-0.48	42.38	-0.45	43.92	-1.99	43.27	-1.34
WV	1,423,000	349,193	24.54	22.12	2.42	20.88	3.66	21.45	3.09	22.45	2.09	23.13	1.41
Overall:	69,716,000	20,639,288	29.60	28.68	0.92	27.94	1.67	25.20	4.40	24.42	5.19	22.85	6.75

Republican Registration as a Percentage of CSAE Nov Eligibles 2004 vs 1980 - 1964

ST	2004 VAP	2004 Registration	2004	1980		1976		1972		1968		1964	
			% VAP Reg'd	% VAP Reg'd	+/-04-80 Points	% VAP Reg'd	+/-04-76 Points	% VAP Reg'd	+/-04-72 Points	% VAP Reg'd	+/-04-68 Points	% VAP Reg'd	+/-04-64 Points
AK	447,000	117,445	26.27	15.75	10.52	13.45	12.82	11.79	14.48	—	—	—	—
AZ	3,768,000	1,138,714	30.22	25.78	4.44	24.94	5.28	27.95	2.27	26.42	3.80	—	—
CO	3,275,000	1,114,576	34.03	21.36	12.67	18.94	15.09	21.82	12.21	22.54	11.49	—	—
FL	11,904,000	3,892,492	32.70	20.12	12.58	18.43	14.27	19.07	13.63	15.54	17.16	13.03	19.67
IA	2,190,000	644,846	29.45	26.44	3.01	21.75	7.70	—	—	—	—	—	—
KS	1,954,000	779,687	39.90	—	—	—	—	—	—	—	—	—	—
KY	3,134,000	996,663	31.80	20.25	11.55	20.72	11.08	21.45	10.35	—	—	—	—
LA	3,310,000	691,276	20.88	5.26	15.62	2.59	18.29	2.08	18.80	1.42	19.46	0.92	19.96
NE	1,256,000	575,781	45.84	38.11	7.73	38.05	7.79	39.94	5.90	39.31	6.53	—	—
NV	1,528,000	382,630	25.04	19.89	5.15	17.48	7.56	21.27	3.77	23.92	1.12	22.43	2.61
NJ	5,702,000	884,801	15.52	—	—	—	—	—	—	—	—	—	—
NM	1,322,000	338,416	25.60	22.23	3.37	19.35	6.25	22.67	2.93	24.00	1.60	24.31	1.29
NY	12,496,000	3,209,082	25.68	—	—	—	—	—	—	—	—	—	—
NC	6,208,000	1,898,672	30.58	15.97	14.61	15.47	15.11	15.34	15.24	15.34	15.24	—	—
PA	9,230,000	3,386,434	36.69	27.44	9.25	28.54	8.15	33.53	3.16	38.41	-1.72	38.83	-2.14
SD	569,000	238,580	41.93	42.74	-0.81	42.61	-0.68	44.69	-2.76	—	—	—	—
WV	1,423,000	349,193	24.54	23.12	1.42	26.08	-1.54	29.55	-5.01	32.48	-7.94	34.66	-10.12
Overall:	69,716,000	20,639,288	29.60	21.94	7.66	21.33	8.28	23.72	5.89	25.10	4.51	26.38	3.22

Other Registration as a Percentage of CSAE Nov Eligibles 2004 vs 2000 - 1984

ST	2004 VAP	2004 Registration	2004	2000		1996		1992		1988		1984	
			% VAP Reg'd	% VAP Reg'd	+/-04-00 Points	% VAP Reg'd	+/-04-96 Points	% VAP Reg'd	+/-04-92 Points	% VAP Reg'd	+/-04-88 Points	% VAP Reg'd	+/-04-84 Points
AK	447,000	280,667	62.79	66.12	-3.33	60.37	2.42	49.10	13.69	48.91	13.88	55.24	7.55
AZ	3,768,000	753,295	19.99	14.76	5.23	10.16	9.83	8.69	11.30	8.55	11.44	6.88	13.11
CO	3,275,000	1,014,155	30.97	32.68	-1.71	26.71	4.26	25.70	5.27	31.93	-0.96	27.04	3.93
FL	11,904,000	2,147,369	18.04	13.60	4.44	9.96	8.08	5.66	12.38	4.74	13.30	4.56	13.48
IA	2,190,000	821,772	37.52	34.57	2.95	27.34	10.18	25.90	11.62	27.15	10.37	28.79	8.73
KS	1,954,000	455,171	23.29	22.99	0.30	19.46	3.83	19.50	3.79	21.57	1.72	—	—
KY	3,134,000	182,274	5.82	5.65	0.17	6.00	-0.18	3.09	2.73	2.53	3.29	2.80	3.02
LA	3,310,000	594,711	17.97	15.60	2.37	11.20	6.77	7.27	10.70	6.38	11.59	6.35	11.62
NE	1,256,000	187,651	14.94	12.69	2.25	10.75	4.19	8.40	6.54	5.74	9.20	5.48	9.46
NV	1,528,000	179,700	11.76	10.94	0.82	10.63	1.13	10.17	1.59	5.83	5.93	3.69	8.07
NJ	5,702,000	2,957,934	51.88	47.00	4.88	42.09	9.79	32.47	19.41	32.83	19.05	31.62	20.26
NM	1,322,000	179,962	13.61	10.78	2.83	8.46	5.15	5.17	8.44	4.10	9.51	4.52	9.09
NY	12,496,000	3,093,412	24.76	23.09	1.67	—	—	—	—	—	—	—	—
NC	6,208,000	1,030,525	16.60	14.30	2.30	9.30	7.30	5.53	11.07	3.45	13.15	3.15	13.45
PA	9,230,000	963,247	10.44	8.68	1.76	6.12	4.32	4.24	6.20	3.24	7.20	3.71	6.73
SD	569,000	72,158	12.68	11.50	1.18	9.81	2.87	8.48	4.20	7.15	5.53	8.06	4.62
WV	1,423,000	139,037	9.77	7.00	2.77	4.80	4.97	2.73	7.04	1.87	7.90	1.51	8.26
Overall:	69,716,000	15,053,040	21.59	19.20	2.39	14.70	6.89	11.27	10.33	10.94	10.65	10.25	11.34



Other Registration as a Percentage of CSAE Nov Eligibles 2004 vs 1980 - 1964

ST	2004 VAP	2004 Registration	2004	1980		1976		1972		1968		1964	
			% VAP Reg'd	% VAP Reg'd	+/-04-80 Points	% VAP Reg'd	+/-04-76 Points	% VAP Reg'd	+/-04-72 Points	% VAP Reg'd	+/-04-68 Points	% VAP Reg'd	+/-04-64 Points
AK	447,000	280,667	62.79	54.56	8.23	49.23	13.56	39.29	23.50	—	—	—	—
AZ	3,768,000	753,295	19.99	5.17	14.82	4.35	15.64	3.37	16.62	1.80	18.19	—	—
CO	3,275,000	1,014,155	30.97	26.18	4.79	29.86	1.11	29.43	1.54	28.28	2.69	—	—
FL	11,904,000	2,147,369	18.04	4.12	13.92	3.25	14.79	2.31	15.73	1.39	16.65	0.95	17.09
IA	2,190,000	821,772	37.52	29.38	8.14	23.89	13.63	—	—	—	—	—	—
KS	1,954,000	455,171	23.29	—	—	—	—	—	—	—	—	—	—
KY	3,134,000	182,274	5.82	—	—	—	—	—	—	—	—	—	—
LA	3,310,000	594,711	17.97	4.25	13.72	1.96	16.01	0.97	17.00	0.50	17.47	0.28	17.69
NE	1,256,000	187,651	14.94	4.90	10.04	4.47	10.47	3.47	11.47	2.92	12.02	—	—
NV	1,528,000	179,700	11.76	4.06	7.70	3.81	7.95	4.66	7.10	4.44	7.32	3.73	8.03
NJ	5,702,000	2,957,934	51.88	—	—	—	—	—	—	—	—	—	—
NM	1,322,000	179,962	13.61	5.66	7.95	4.63	8.98	4.90	8.71	4.06	9.55	4.45	9.16
NY	12,496,000	3,093,412	24.76	—	—	—	—	—	—	—	—	—	—
NC	6,208,000	1,030,525	16.60	2.90	13.70	2.85	13.75	2.44	14.16	2.01	14.59	—	—
PA	9,230,000	963,247	10.44	3.55	6.89	2.51	7.93	2.25	8.19	1.50	8.94	1.20	9.24
SD	569,000	72,158	12.68	8.08	4.60	8.25	4.43	8.61	4.07	—	—	—	—
WV	1,423,000	139,037	9.77	1.73	8.04	1.77	8.00	1.39	8.38	0.75	9.02	0.65	9.12
Overall:	69,716,000	15,053,040	21.59	7.23	14.36	6.31	15.28	4.38	17.21	3.17	18.42	1.13	20.46

Total Registration as a Percentage of CSAE Nov Eligibles 2004 vs 1980 - 1964

ST	2004 VAP	2004 Registration	2004	1980		1976		1972		1968		1964	
			% VAP Reg'd	% VAP Reg'd	+/-04-80 Points	% VAP Reg'd	+/-04-76 Points	% VAP Reg'd	+/-04-72 Points	% VAP Reg'd	+/-04-68 Points	% VAP Reg'd	+/-04-64 Points
<b>2004 BATTLEGROUND STATES</b>													
AR	2,057,000	1,685,527	81.94	73.66	8.28	68.49	13.45	70.94	11.00	73.61	8.33	65.17	16.77
AZ	3,768,000	2,643,331	70.15	58.92	11.23	61.19	8.96	66.50	3.65	63.97	6.18	69.23	0.92
CO	3,275,000	3,065,227	93.59	69.69	23.90	73.95	19.64	77.53	16.06	78.08	15.51	82.16	11.43
FL	11,904,000	10,301,290	86.54	67.70	18.84	66.20	20.34	68.22	18.32	69.41	17.13	71.13	15.41
IA	2,190,000	2,106,658	96.19	82.96	13.23	70.64	25.55	—	—	—	—	—	—
MI	7,289,000	7,164,047	98.29	89.48	8.81	85.52	12.77	83.05	15.24	81.10	17.19	70.94	27.35
MO	4,242,000	4,206,423	99.16	80.35	18.81	75.48	23.68	—	—	—	—	—	—
NM	1,322,000	1,051,536	79.54	74.68	4.86	68.12	11.42	75.78	3.76	83.17	-3.63	90.10	-10.56
NV	1,528,000	945,981	61.91	51.35	10.56	52.61	9.30	61.29	0.62	69.16	-7.25	72.66	-10.75
PA	9,230,000	8,315,974	90.10	66.50	23.60	68.75	21.35	72.99	17.11	77.49	12.61	80.61	9.49
TN	4,462,000	3,730,058	83.60	71.61	11.99	70.73	12.87	72.13	11.47	79.14	4.46	73.57	10.03
WV	1,423,000	1,168,694	82.13	74.91	7.22	83.04	-0.91	87.45	-5.32	93.24	-11.11	98.64	-16.51
TOT	52,690,000	46,384,746	88.03	73.32	14.71	72.22	15.81	74.48	13.55	77.08	10.95	76.29	11.75
<b>ALL OTHER STATES</b>													
AK	447,000	469,042	104.93	95.73	9.20	88.44	16.49	71.95	32.98	—	—	—	—
GA	6,135,000	4,248,802	69.26	64.36	4.90	65.95	3.31	68.84	0.42	68.69	0.57	63.18	6.08
HI	877,000	647,238	73.80	63.33	10.47	63.80	10.00	67.57	6.23	68.87	4.93	61.17	12.63
KS	1,954,000	1,687,896	86.38	75.87	10.51	72.13	14.25	69.11	17.27	—	—	—	—
KY	3,134,000	2,794,286	89.16	68.36	20.80	68.69	20.47	64.11	25.05	71.11	18.05	78.89	10.27
LA	3,310,000	2,889,981	87.31	70.77	16.54	70.87	16.44	74.68	12.63	72.79	14.52	63.30	24.01
NE	1,256,000	1,160,199	92.37	76.79	15.58	79.01	13.36	80.33	12.04	76.29	16.08	—	—
NJ	5,702,000	5,005,969	87.79	73.27	14.52	76.32	11.47	77.51	10.28	78.60	9.19	81.75	6.04
NY	12,496,000	11,837,068	94.73	65.69	29.04	68.66	26.07	77.54	17.19	74.47	20.26	79.42	15.31
NC	6,208,000	5,502,937	88.64	65.44	23.20	65.65	22.99	66.73	21.91	70.99	17.65	—	—
RI	752,000	687,488	91.42	80.75	10.67	82.70	8.72	83.10	8.32	83.24	8.18	86.89	4.53
SC	3,120,000	2,256,745	72.33	56.52	15.81	56.23	16.10	58.57	13.76	59.53	12.80	57.10	15.23
SD	569,000	552,441	97.09	92.65	4.44	92.11	4.98	89.56	7.53	90.22	6.87	95.55	1.54
VA	5,290,000	4,517,980	85.41	59.94	25.47	59.73	25.68	65.34	20.07	56.01	29.40	52.01	33.40
TOT	51,250,000	44,258,072	86.36	67.41	18.95	68.79	17.57	72.63	13.72	71.90	14.45	73.32	13.04
ALL	103,940,000	90,642,818	87.21	70.29	16.92	70.44	16.77	73.43	13.78	74.14	13.07	74.69	12.52

Total Registration as a Percentage of CSAE Nov Eligibles 2004 vs 1980 - 1964

ST	2004 VAP	2004 Registration	2004	1980		1976		1972		1968		1964	
			% VAP Reg'd	% VAP Reg'd	+/-04-80 Points	% VAP Reg'd	+/-04-76 Points	% VAP Reg'd	+/-04-72 Points	% VAP Reg'd	+/-04-68 Points	% VAP Reg'd	+/-04-64 Points
<b>2004 BATTLEGROUND STATES</b>													
AR	2,057,000	1,685,527	81.94	73.66	8.28	68.49	13.45	70.94	11.00	73.61	8.33	65.17	16.77
AZ	3,768,000	2,643,331	70.15	58.92	11.23	61.19	8.96	66.50	3.65	63.97	6.18	69.23	0.92
CO	3,275,000	3,065,227	93.59	69.69	23.90	73.95	19.64	77.53	16.06	78.08	15.51	82.16	11.43
FL	11,904,000	10,301,290	86.54	67.70	18.84	66.20	20.34	68.22	18.32	69.41	17.13	71.13	15.41
IA	2,190,000	2,106,658	96.19	82.96	13.23	70.64	25.55	—	—	—	—	—	—
MI	7,289,000	7,164,047	98.29	89.48	8.81	85.52	12.77	83.05	15.24	81.10	17.19	70.94	27.35
MO	4,242,000	4,206,423	99.16	80.35	18.81	75.48	23.68	—	—	—	—	—	—
NM	1,322,000	1,051,536	79.54	74.68	4.86	68.12	11.42	75.78	3.76	83.17	-3.63	90.10	-10.56
NV	1,528,000	945,981	61.91	51.35	10.56	52.61	9.30	61.29	0.62	69.16	-7.25	72.66	-10.75
PA	9,230,000	8,315,974	90.10	66.50	23.60	68.75	21.35	72.99	17.11	77.49	12.61	80.61	9.49
TN	4,462,000	3,730,058	83.60	71.61	11.99	70.73	12.87	72.13	11.47	79.14	4.46	73.57	10.03
WV	1,423,000	1,168,694	82.13	74.91	7.22	83.04	-0.91	87.45	-5.32	93.24	-11.11	98.64	-16.51
TOT	52,690,000	46,384,746	88.03	73.32	14.71	72.22	15.81	74.48	13.55	77.08	10.95	76.29	11.75
<b>ALL OTHER STATES</b>													
AK	447,000	469,042	104.93	95.73	9.20	88.44	16.49	71.95	32.98	—	—	—	—
GA	6,135,000	4,248,802	69.26	64.36	4.90	65.95	3.31	68.84	0.42	68.69	0.57	63.18	6.08
HI	877,000	647,238	73.80	63.33	10.47	63.80	10.00	67.57	6.23	68.87	4.93	61.17	12.63
KS	1,954,000	1,687,896	86.38	75.87	10.51	72.13	14.25	69.11	17.27	—	—	—	—
KY	3,134,000	2,794,286	89.16	68.36	20.80	68.69	20.47	64.11	25.05	71.11	18.05	78.89	10.27
LA	3,310,000	2,889,981	87.31	70.77	16.54	70.87	16.44	74.68	12.63	72.79	14.52	63.30	24.01
NE	1,256,000	1,160,199	92.37	76.79	15.58	79.01	13.36	80.33	12.04	76.29	16.08	—	—
NJ	5,702,000	5,005,969	87.79	73.27	14.52	76.32	11.47	77.51	10.28	78.60	9.19	81.75	6.04
NY	12,496,000	11,837,068	94.73	65.69	29.04	68.66	26.07	77.54	17.19	74.47	20.26	79.42	15.31
NC	6,208,000	5,502,937	88.64	65.44	23.20	65.65	22.99	66.73	21.91	70.99	17.65	—	—
RI	752,000	687,488	91.42	80.75	10.67	82.70	8.72	83.10	8.32	83.24	8.18	86.89	4.53
SC	3,120,000	2,256,745	72.33	56.52	15.81	56.23	16.10	58.57	13.76	59.53	12.80	57.10	15.23
SD	569,000	552,441	97.09	92.65	4.44	92.11	4.98	89.56	7.53	90.22	6.87	95.55	1.54
VA	5,290,000	4,517,980	85.41	59.94	25.47	59.73	25.68	65.34	20.07	56.01	29.40	52.01	33.40
TOT	51,250,000	44,258,072	86.36	67.41	18.95	68.79	17.57	72.63	13.72	71.90	14.45	73.32	13.04
ALL	103,940,000	90,642,818	87.21	70.29	16.92	70.44	16.77	73.43	13.78	74.14	13.07	74.69	12.52

Democratic Registration as a Percentage of CSAE Nov Eligibles 2004 vs 1980 - 1964

ST	2004 VAP	2004 Registration	2004	1980		1976		1972		1968		1964	
			% VAP Reg'd	% VAP Reg'd	+/-04-80 Points	% VAP Reg'd	+/-04-76 Points	% VAP Reg'd	+/-04-72 Points	% VAP Reg'd	+/-04-68 Points	% VAP Reg'd	+/-04-64 Points
<u>2004 BATTLEGROUND STATES</u>													
AZ	3,768,000	1,004,739	26.67	27.97	-1.30	31.91	-5.24	35.18	-8.51	35.74	-9.07	—	—
CO	3,275,000	936,496	28.60	22.15	6.45	25.15	3.45	26.29	2.31	27.27	1.33	—	—
FL	11,904,000	4,261,429	35.80	43.46	-7.66	44.52	-8.72	46.84	-11.04	52.48	-16.68	57.15	-21.35
IA	2,190,000	640,040	29.23	27.14	2.09	25.00	4.23	—	—	—	—	—	—
NM	1,322,000	533,158	40.33	46.79	-6.46	44.14	-3.81	48.20	-7.87	55.10	-14.77	61.33	-21.00
NV	1,528,000	383,951	25.13	27.39	-2.26	31.32	-6.19	35.35	-10.22	40.80	-15.67	46.50	-21.37
PA	9,230,000	3,966,293	42.97	35.51	7.46	37.70	5.27	37.20	5.77	37.58	5.39	40.59	2.38
WV	1,423,000	680,464	47.82	50.06	-2.24	55.18	-7.36	56.51	-8.69	60.01	-12.19	63.33	-15.51
TOT	34,640,000	12,406,570	35.82	36.43	-0.61	38.10	-2.28	40.46	-4.65	42.74	-6.93	48.19	-12.38
<u>ALL OTHER STATES</u>													
AK	447,000	70,930	15.87	25.42	-9.55	25.76	-9.89	20.88	-5.01	—	—	—	—
KS	1,954,000	453,039	23.19	—	—	—	—	—	—	—	—	—	—
KY	3,134,000	1,615,349	51.54	48.11	3.43	47.97	3.57	42.66	8.88	—	—	—	—
LA	3,310,000	1,603,994	48.46	61.25	-12.79	66.33	-17.87	71.62	-23.16	70.87	-22.41	62.10	-13.64
NE	1,256,000	396,767	31.59	33.77	-2.18	36.49	-4.90	36.91	-5.32	34.06	-2.47	—	—
NJ	5,702,000	1,163,224	20.40	—	—	—	—	—	—	—	—	—	—
NY	12,496,000	5,534,574	44.29	—	—	—	—	—	—	—	—	—	—
NC	6,208,000	2,573,732	41.46	46.58	-5.12	47.32	-5.86	48.95	-7.49	53.64	-12.18	—	—
SD	569,000	191,523	33.66	41.83	-8.17	41.25	-7.59	36.26	-2.60	—	—	—	—
TOT	35,076,000	13,603,132	38.78	48.61	-9.83	50.34	-11.55	50.68	-11.90	56.58	-17.80	62.10	-23.32
ALL	69,716,000	26,009,702	37.31	40.31	-3.00	42.05	-4.74	44.03	-6.72	46.55	-9.24	50.04	-12.73

Democratic Registration as a Percentage of CSAE Nov Eligibles 2004 vs 1980 - 1964

ST	2004 VAP	2004 Registration	2004	1980		1976		1972		1968		1964	
			% VAP Reg'd	% VAP Reg'd	+/-04-80 Points	% VAP Reg'd	+/-04-76 Points	% VAP Reg'd	+/-04-72 Points	% VAP Reg'd	+/-04-68 Points	% VAP Reg'd	+/-04-64 Points
<u>2004 BATTLEGROUND STATES</u>													
AZ	3,768,000	1,004,739	26.67	27.97	-1.30	31.91	-5.24	35.18	-8.51	35.74	-9.07	—	—
CO	3,275,000	936,496	28.60	22.15	6.45	25.15	3.45	26.29	2.31	27.27	1.33	—	—
FL	11,904,000	4,261,429	35.80	43.46	-7.66	44.52	-8.72	46.84	-11.04	52.48	-16.68	57.15	-21.35
IA	2,190,000	640,040	29.23	27.14	2.09	25.00	4.23	—	—	—	—	—	—
NM	1,322,000	533,158	40.33	46.79	-6.46	44.14	-3.81	48.20	-7.87	55.10	-14.77	61.33	-21.00
NV	1,528,000	383,951	25.13	27.39	-2.26	31.32	-6.19	35.35	-10.22	40.80	-15.67	46.50	-21.37
PA	9,230,000	3,966,293	42.97	35.51	7.46	37.70	5.27	37.20	5.77	37.58	5.39	40.59	2.38
WV	1,423,000	680,464	47.82	50.06	-2.24	55.18	-7.36	56.51	-8.69	60.01	-12.19	63.33	-15.51
TOT	34,640,000	12,406,570	35.82	36.43	-0.61	38.10	-2.28	40.46	-4.65	42.74	-6.93	48.19	-12.38
<u>ALL OTHER STATES</u>													
AK	447,000	70,930	15.87	25.42	-9.55	25.76	-9.89	20.88	-5.01	—	—	—	—
KS	1,954,000	453,039	23.19	—	—	—	—	—	—	—	—	—	—
KY	3,134,000	1,615,349	51.54	48.11	3.43	47.97	3.57	42.66	8.88	—	—	—	—
LA	3,310,000	1,603,994	48.46	61.25	-12.79	66.33	-17.87	71.62	-23.16	70.87	-22.41	62.10	-13.64
NE	1,256,000	396,767	31.59	33.77	-2.18	36.49	-4.90	36.91	-5.32	34.06	-2.47	—	—
NJ	5,702,000	1,163,224	20.40	—	—	—	—	—	—	—	—	—	—
NY	12,496,000	5,534,574	44.29	—	—	—	—	—	—	—	—	—	—
NC	6,208,000	2,573,732	41.46	46.58	-5.12	47.32	-5.86	48.95	-7.49	53.64	-12.18	—	—
SD	569,000	191,523	33.66	41.83	-8.17	41.25	-7.59	36.26	-2.60	—	—	—	—
TOT	35,076,000	13,603,132	38.78	48.61	-9.83	50.34	-11.55	50.68	-11.90	56.58	-17.80	62.10	-23.32
ALL	69,716,000	26,009,702	37.31	40.31	-3.00	42.05	-4.74	44.03	-6.72	46.55	-9.24	50.04	-12.73

Republican Registration as a Percentage of CSAE Nov Eligibles 2004 vs 1980 - 1964

ST	2004 VAP	2004 Registration	2004	1980		1976		1972		1968		1964	
			% VAP Reg'd	% VAP Reg'd	+/-04-80 Points	% VAP Reg'd	+/-04-76 Points	% VAP Reg'd	+/-04-72 Points	% VAP Reg'd	+/-04-68 Points	% VAP Reg'd	+/-04-64 Points
<u>2004 BATTLEGROUND STATES</u>													
AZ	3,768,000	1,138,714	30.22	25.78	4.44	24.94	5.28	27.95	2.27	26.42	3.80	—	—
CO	3,275,000	1,114,576	34.03	21.36	12.67	18.94	15.09	21.82	12.21	22.54	11.49	—	—
FL	11,904,000	3,892,492	32.70	20.12	12.58	18.43	14.27	19.07	13.63	15.54	17.16	13.03	19.67
IA	2,190,000	644,846	29.45	26.44	3.01	21.75	7.70	—	—	—	—	—	—
NM	1,322,000	338,416	25.60	22.23	3.37	19.35	6.25	22.67	2.93	24.00	1.60	24.31	1.29
NV	1,528,000	382,630	25.04	19.89	5.15	17.48	7.56	21.27	3.77	23.92	1.12	22.43	2.61
PA	9,230,000	3,386,434	36.69	27.44	9.25	28.54	8.15	33.53	3.16	38.41	-1.72	38.83	-2.14
WV	1,423,000	349,193	24.54	23.12	1.42	26.08	-1.54	29.55	-5.01	32.48	-7.94	34.66	-10.12
TOT	34,640,000	11,247,301	32.47	24.00	8.47	23.46	9.01	27.17	5.30	29.23	3.24	30.27	2.20
<u>ALL OTHER STATES</u>													
AK	447,000	117,445	26.27	15.75	10.52	13.45	12.82	11.79	14.48	—	—	—	—
KS	1,954,000	779,687	39.90	—	—	—	—	—	—	—	—	—	—
KY	3,134,000	996,663	31.80	20.25	11.55	20.72	11.08	21.45	10.35	—	—	—	—
LA	3,310,000	691,276	20.88	5.26	15.62	2.59	18.29	2.08	18.80	1.42	19.46	0.92	19.96
NE	1,256,000	575,781	45.84	38.11	7.73	38.05	7.79	39.94	5.90	39.31	6.53	—	—
NJ	5,702,000	884,801	15.52	—	—	—	—	—	—	—	—	—	—
NY	12,496,000	3,209,082	25.68	—	—	—	—	—	—	—	—	—	—
NC	6,208,000	1,898,672	30.58	15.97	14.61	15.47	15.11	15.34	15.24	15.34	15.24	—	—
SD	569,000	238,580	41.93	42.74	-0.81	42.61	-0.68	44.69	-2.76	—	—	—	—
TOT	35,076,000	9,391,987	26.78	17.54	9.24	16.86	9.92	17.25	9.52	14.20	12.57	0.92	25.86
ALL	69,716,000	20,639,288	29.60	21.94	7.66	21.33	8.28	23.72	5.89	25.10	4.51	26.38	3.22

Republican Registration as a Percentage of CSAE Nov Eligibles 2004 vs 1980 - 1964

ST	2004 VAP	2004 Registration	2004	1980		1976		1972		1968		1964	
			% VAP Reg'd	% VAP Reg'd	+/-04-80 Points	% VAP Reg'd	+/-04-76 Points	% VAP Reg'd	+/-04-72 Points	% VAP Reg'd	+/-04-68 Points	% VAP Reg'd	+/-04-64 Points
<u>2004 BATTLEGROUND STATES</u>													
AZ	3,768,000	1,138,714	30.22	25.78	4.44	24.94	5.28	27.95	2.27	26.42	3.80	—	—
CO	3,275,000	1,114,576	34.03	21.36	12.67	18.94	15.09	21.82	12.21	22.54	11.49	—	—
FL	11,904,000	3,892,492	32.70	20.12	12.58	18.43	14.27	19.07	13.63	15.54	17.16	13.03	19.67
IA	2,190,000	644,846	29.45	26.44	3.01	21.75	7.70	—	—	—	—	—	—
NM	1,322,000	338,416	25.60	22.23	3.37	19.35	6.25	22.67	2.93	24.00	1.60	24.31	1.29
NV	1,528,000	382,630	25.04	19.89	5.15	17.48	7.56	21.27	3.77	23.92	1.12	22.43	2.61
PA	9,230,000	3,386,434	36.69	27.44	9.25	28.54	8.15	33.53	3.16	38.41	-1.72	38.83	-2.14
WV	1,423,000	349,193	24.54	23.12	1.42	26.08	-1.54	29.55	-5.01	32.48	-7.94	34.66	-10.12
TOT	34,640,000	11,247,301	32.47	24.00	8.47	23.46	9.01	27.17	5.30	29.23	3.24	30.27	2.20
<u>ALL OTHER STATES</u>													
AK	447,000	117,445	26.27	15.75	10.52	13.45	12.82	11.79	14.48	—	—	—	—
KS	1,954,000	779,687	39.90	—	—	—	—	—	—	—	—	—	—
KY	3,134,000	996,663	31.80	20.25	11.55	20.72	11.08	21.45	10.35	—	—	—	—
LA	3,310,000	691,276	20.88	5.26	15.62	2.59	18.29	2.08	18.80	1.42	19.46	0.92	19.96
NE	1,256,000	575,781	45.84	38.11	7.73	38.05	7.79	39.94	5.90	39.31	6.53	—	—
NJ	5,702,000	884,801	15.52	—	—	—	—	—	—	—	—	—	—
NY	12,496,000	3,209,082	25.68	—	—	—	—	—	—	—	—	—	—
NC	6,208,000	1,898,672	30.58	15.97	14.61	15.47	15.11	15.34	15.24	15.34	15.24	—	—
SD	569,000	238,580	41.93	42.74	-0.81	42.61	-0.68	44.69	-2.76	—	—	—	—
TOT	35,076,000	9,391,987	26.78	17.54	9.24	16.86	9.92	17.25	9.52	14.20	12.57	0.92	25.86
ALL	69,716,000	20,639,288	29.60	21.94	7.66	21.33	8.28	23.72	5.89	25.10	4.51	26.38	3.22

Other Registration as a Percentage of CSAE Nov Eligibles 2004 vs 1980 - 1964

ST	2004 VAP	2004 Registration	2004	1980		1976		1972		1968		1964	
			% VAP Reg'd	% VAP Reg'd	+/-04-80 Points	% VAP Reg'd	+/-04-76 Points	% VAP Reg'd	+/-04-72 Points	% VAP Reg'd	+/-04-68 Points	% VAP Reg'd	+/-04-64 Points
<u>2004 BATTLEGROUND STATES</u>													
AZ	3,768,000	753,295	19.99	5.17	14.82	4.35	15.64	3.37	16.62	1.80	18.19	—	—
CO	3,275,000	1,014,155	30.97	26.18	4.79	29.86	1.11	29.43	1.54	28.28	2.69	—	—
FL	11,904,000	2,147,369	18.04	4.12	13.92	3.25	14.79	2.31	15.73	1.39	16.65	0.95	17.09
IA	2,190,000	821,772	37.52	29.38	8.14	23.89	13.63	—	—	—	—	—	—
NM	1,322,000	179,962	13.61	5.66	7.95	4.63	8.98	4.90	8.71	4.06	9.55	4.45	9.16
NV	1,528,000	179,700	11.76	4.06	7.70	3.81	7.95	4.66	7.10	4.44	7.32	3.73	8.03
PA	9,230,000	963,247	10.44	3.55	6.89	2.51	7.93	2.25	8.19	1.50	8.94	1.20	9.24
WV	1,423,000	139,037	9.77	1.73	8.04	1.77	8.00	1.39	8.38	0.75	9.02	0.65	9.12
TOT	34,640,000	6,198,537	17.89	7.89	10.01	7.02	10.87	4.77	13.12	3.76	14.14	1.26	16.63
<u>ALL OTHER STATES</u>													
AK	447,000	280,667	62.79	54.56	8.23	49.23	13.56	39.29	23.50	—	—	—	—
KS	1,954,000	455,171	23.29	—	—	—	—	—	—	—	—	—	—
KY	3,134,000	182,274	5.82	—	—	—	—	—	—	—	—	—	—
LA	3,310,000	594,711	17.97	4.25	13.72	1.96	16.01	0.97	17.00	0.50	17.47	0.28	17.69
NE	1,256,000	187,651	14.94	4.90	10.04	4.47	10.47	3.47	11.47	2.92	12.02	—	—
NJ	5,702,000	2,957,934	51.88	—	—	—	—	—	—	—	—	—	—
NY	12,496,000	3,093,412	24.76	—	—	—	—	—	—	—	—	—	—
NC	6,208,000	1,030,525	16.60	2.90	13.70	2.85	13.75	2.44	14.16	2.01	14.59	—	—
SD	569,000	72,158	12.68	8.08	4.60	8.25	4.43	8.61	4.07	—	—	—	—
TOT	35,076,000	8,854,503	25.24	5.42	19.82	4.39	20.85	3.45	21.80	1.63	23.61	0.28	24.96
ALL	69,716,000	15,053,040	21.59	7.23	14.36	6.31	15.28	4.38	17.21	3.17	18.42	1.13	20.46



Other Registration as a Percentage of CSAE Nov Eligibles 2004 vs 1980 - 1964

ST	2004 VAP	2004 Registration	2004	1980		1976		1972		1968		1964	
			% VAP Reg'd	% VAP Reg'd	+/-04-80 Points	% VAP Reg'd	+/-04-76 Points	% VAP Reg'd	+/-04-72 Points	% VAP Reg'd	+/-04-68 Points	% VAP Reg'd	+/-04-64 Points
<u>2004 BATTLEGROUND STATES</u>													
AZ	3,768,000	753,295	19.99	5.17	14.82	4.35	15.64	3.37	16.62	1.80	18.19	—	—
CO	3,275,000	1,014,155	30.97	26.18	4.79	29.86	1.11	29.43	1.54	28.28	2.69	—	—
FL	11,904,000	2,147,369	18.04	4.12	13.92	3.25	14.79	2.31	15.73	1.39	16.65	0.95	17.09
IA	2,190,000	821,772	37.52	29.38	8.14	23.89	13.63	—	—	—	—	—	—
NM	1,322,000	179,962	13.61	5.66	7.95	4.63	8.98	4.90	8.71	4.06	9.55	4.45	9.16
NV	1,528,000	179,700	11.76	4.06	7.70	3.81	7.95	4.66	7.10	4.44	7.32	3.73	8.03
PA	9,230,000	963,247	10.44	3.55	6.89	2.51	7.93	2.25	8.19	1.50	8.94	1.20	9.24
WV	1,423,000	139,037	9.77	1.73	8.04	1.77	8.00	1.39	8.38	0.75	9.02	0.65	9.12
TOT	34,640,000	6,198,537	17.89	7.89	10.01	7.02	10.87	4.77	13.12	3.76	14.14	1.26	16.63
<u>ALL OTHER STATES</u>													
AK	447,000	280,667	62.79	54.56	8.23	49.23	13.56	39.29	23.50	—	—	—	—
KS	1,954,000	455,171	23.29	—	—	—	—	—	—	—	—	—	—
KY	3,134,000	182,274	5.82	—	—	—	—	—	—	—	—	—	—
LA	3,310,000	594,711	17.97	4.25	13.72	1.96	16.01	0.97	17.00	0.50	17.47	0.28	17.69
NE	1,256,000	187,651	14.94	4.90	10.04	4.47	10.47	3.47	11.47	2.92	12.02	—	—
NJ	5,702,000	2,957,934	51.88	—	—	—	—	—	—	—	—	—	—
NY	12,496,000	3,093,412	24.76	—	—	—	—	—	—	—	—	—	—
NC	6,208,000	1,030,525	16.60	2.90	13.70	2.85	13.75	2.44	14.16	2.01	14.59	—	—
SD	569,000	72,158	12.68	8.08	4.60	8.25	4.43	8.61	4.07	—	—	—	—
TOT	35,076,000	8,854,503	25.24	5.42	19.82	4.39	20.85	3.45	21.80	1.63	23.61	0.28	24.96
ALL	69,716,000	15,053,040	21.59	7.23	14.36	6.31	15.28	4.38	17.21	3.17	18.42	1.13	20.46

Total Registration as a Percentage of CSAE Nov Eligibles 2004 vs 2000  
Ranked By Percent Point Difference

ST	2004 VAP	2004 Registration	2004 % VAP Reg'd	2000 % VAP Reg'd	— -2004 - 2000 — Point Diff /	% Diff
MO	4,242,000	4,206,423	99.16	89.41	9.75 /	10.90
FL	11,904,000	10,301,290	86.54	78.32	8.22 /	10.50
WV	1,423,000	1,168,694	82.13	76.22	5.91 /	7.75
VA	5,290,000	4,517,980	85.41	80.15	5.26 /	6.56
PA	9,230,000	8,315,974	90.10	85.00	5.10 /	6.00
NM	1,322,000	1,051,536	79.54	74.85	4.69 /	6.27
IA	2,190,000	2,106,658	96.19	91.68	4.51 /	4.92
NJ	5,702,000	5,005,969	87.79	83.41	4.38 /	5.25
NY	12,496,000	11,837,068	94.73	90.36	4.37 /	4.84
NE	1,256,000	1,160,199	92.37	88.67	3.70 /	4.17
TN	4,462,000	3,730,058	83.60	80.31	3.29 /	4.10
RI	752,000	687,488	91.42	88.53	2.89 /	3.26
AR	2,057,000	1,685,527	81.94	79.22	2.72 /	3.43
SD	569,000	552,441	97.09	94.88	2.21 /	2.33
MI	7,289,000	7,164,047	98.29	96.27	2.02 /	2.10
KS	1,954,000	1,687,896	86.38	85.10	1.28 /	1.50
LA	3,310,000	2,889,981	87.31	86.67	0.64 /	0.74
NC	6,208,000	5,502,937	88.64	88.39	0.25 /	0.28
CO	3,275,000	3,065,227	93.59	94.46	-0.87 /	-0.92
KY	3,134,000	2,794,286	89.16	90.18	-1.02 /	-1.13
HI	877,000	647,238	73.80	75.34	-1.54 /	-2.04
NV	1,528,000	945,981	61.91	65.45	-3.54 /	-5.41
SC	3,120,000	2,256,745	72.33	79.33	-7.00 /	-8.82
AZ	3,768,000	2,643,331	70.15	77.35	-7.20 /	-9.31
GA	6,135,000	4,248,802	69.26	81.11	-11.85 /	-14.61
AK	447,000	469,042	104.93	136.79	-31.86 /	-23.29

Democratic Registration as a Percentage of CSAE Nov Eligibles 2004 vs 2000  
 Ranked By Percent Point Difference

ST	2004 VAP	2004 Registration	2004 % VAP Reg'd	2000 % VAP Reg'd	— -2004 - 2000 — Point Diff /	% Diff
NY	12,496,000	5,534,574	44.29	42.07	2.22 /	5.28
PA	9,230,000	3,966,293	42.97	40.81	2.16 /	5.29
FL	11,904,000	4,261,429	35.80	34.03	1.77 /	5.20
IA	2,190,000	640,040	29.23	28.03	1.20 /	4.28
WV	1,423,000	680,464	47.82	47.10	0.72 /	1.53
SD	569,000	191,523	33.66	32.99	0.67 /	2.03
NM	1,322,000	533,158	40.33	39.67	0.66 /	1.66
KY	3,134,000	1,615,349	51.54	51.00	0.54 /	1.06
CO	3,275,000	936,496	28.60	28.24	0.36 /	1.27
KS	1,954,000	453,039	23.19	23.56	-0.37 /	-1.57
NE	1,256,000	396,767	31.59	32.05	-0.46 /	-1.44
NJ	5,702,000	1,163,224	20.40	20.88	-0.48 /	-2.30
NV	1,528,000	383,951	25.13	27.22	-2.09 /	-7.68
NC	6,208,000	2,573,732	41.46	44.11	-2.65 /	-6.01
AZ	3,768,000	1,004,739	26.67	29.45	-2.78 /	-9.44
LA	3,310,000	1,603,994	48.46	51.97	-3.51 /	-6.75
AK	447,000	70,930	15.87	27.31	-11.44 /	-41.89

Republican Registration as a Percentage of CSAE Nov Eligibles 2004 vs 2000  
Ranked By Percent Point Difference

ST	2004 VAP	2004 Registration	2004 % VAP Reg'd	2000 % VAP Reg'd	— -2004 - 2000 —	
					Point Diff /	% Diff
AK	447,000	117,445	26.27	18.01	8.26 /	45.86
KY	3,134,000	996,663	31.80	28.04	3.76 /	13.41
WV	1,423,000	349,193	24.54	22.12	2.42 /	10.94
FL	11,904,000	3,892,492	32.70	30.69	2.01 /	6.55
NE	1,256,000	575,781	45.84	43.92	1.92 /	4.37
LA	3,310,000	691,276	20.88	19.09	1.79 /	9.38
KS	1,954,000	779,687	39.90	38.54	1.36 /	3.53
NM	1,322,000	338,416	25.60	24.41	1.19 /	4.88
PA	9,230,000	3,386,434	36.69	35.51	1.18 /	3.32
SD	569,000	238,580	41.93	41.33	0.60 /	1.45
CO	3,275,000	1,114,576	34.03	33.54	0.49 /	1.46
NC	6,208,000	1,898,672	30.58	30.09	0.49 /	1.63
IA	2,190,000	644,846	29.45	29.08	0.37 /	1.27
NY	12,496,000	3,209,082	25.68	25.44	0.24 /	0.94
NJ	5,702,000	884,801	15.52	15.52	0.00 /	0.00
NV	1,528,000	382,630	25.04	27.28	-2.24 /	-8.21
AZ	3,768,000	1,138,714	30.22	33.15	-2.93 /	-8.84

Other Registration as a Percentage of CSAE Nov Eligibles 2004 vs 2000  
Ranked By Percent Point Difference

ST	2004 VAP	2004 Registration	2004 % VAP Reg'd	2000 % VAP Reg'd	— -2004 - 2000 — Point Diff /	% Diff
AZ	3,768,000	753,295	19.99	14.76	5.23 /	35.43
NJ	5,702,000	2,957,934	51.88	47.00	4.88 /	10.38
FL	11,904,000	2,147,369	18.04	13.60	4.44 /	32.65
IA	2,190,000	821,772	37.52	34.57	2.95 /	8.53
NM	1,322,000	179,962	13.61	10.78	2.83 /	26.25
WV	1,423,000	139,037	9.77	7.00	2.77 /	39.57
LA	3,310,000	594,711	17.97	15.60	2.37 /	15.19
NC	6,208,000	1,030,525	16.60	14.30	2.30 /	16.08
NE	1,256,000	187,651	14.94	12.69	2.25 /	17.73
PA	9,230,000	963,247	10.44	8.68	1.76 /	20.28
NY	12,496,000	3,093,412	24.76	23.09	1.67 /	7.23
SD	569,000	72,158	12.68	11.50	1.18 /	10.26
NV	1,528,000	179,700	11.76	10.94	0.82 /	7.50
KS	1,954,000	455,171	23.29	22.99	0.30 /	1.30
KY	3,134,000	182,274	5.82	5.65	0.17 /	3.01
CO	3,275,000	1,014,155	30.97	32.68	-1.71 /	-5.23
AK	447,000	280,667	62.79	66.12	-3.33 /	-5.04

## **IV. DEMOGRAPHIC DATA**

Presidential Electorate Profile: 1964 to 2000  
Adjusted Data

	18-24	18-20	21-24	25-34	35-44	45-54	55-64	65-74	75+
1964	*	*	45.88%	59.27%	67.38%	70.95%	70.18%	65.94%	51.28%
1968	*	*	46.35%	57.77%	66.09%	70.34%	69.96%	66.72%	51.53%
1972	45.02%	43.64%	46.13%	55.06%	61.70%	66.31%	66.11%	63.52%	50.99%
1976	39.49%	35.31%	42.90%	58.55%	60.61%	65.24%	67.03%	63.74%	52.17%
1980	36.65%	32.58%	39.78%	51.24%	61.09%	64.13%	68.00%	65.99%	54.33%
1984	38.41%	34.35%	41.13%	52.18%	61.13%	65.18%	69.69%	69.42%	58.88%
1988	33.27%	30.31%	35.42%	45.03%	58.32%	63.68%	66.40%	70.12%	59.23%
1992	40.71%	36.40%	43.57%	51.04%	61.49%	66.63%	69.50%	71.64%	62.62%
1996	30.75%	29.51%	31.71%	41.40%	53.21%	60.60%	66.07%	68.45%	61.09%
2000	32.89%	29.02%	35.98%	44.23%	55.55%	62.86%	67.41%	70.44%	65.49%

\* Until 1972, 18 to 20-year-olds could not vote in federal elections.

	male	female
1964	66.50%	61.60%
1968	65.06%	61.23%
1972	59.48%	57.38%
1976	56.89%	56.12%
1980	55.73%	56.08%
1984	56.58%	58.46%
1988	53.51%	55.34%
1992	58.07%	60.21%
1996	51.11%	53.85%
2000	53.66%	56.75%

	white, all	white, male	white, female
1964	65.25%	68.00%	62.79%
1968	64.35%	66.48%	62.46%
1972	59.86%	61.02%	58.83%
1976	58.26%	58.78%	57.80%
1980	57.58%	57.59%	57.58%
1984	59.06%	58.38%	59.28%
1988	56.19%	55.42%	56.89%
1992	61.48%	60.51%	62.33%
1996	54.34%	53.11%	55.51%
2000	56.93%	55.49%	58.28%

	black, all	black, male	black, female
1964	53.08%	53.68%	52.61%
1968	52.87%	53.45%	52.40%
1972	47.51%	47.46%	47.54%
1976	46.04%	44.53%	47.25%
1980	47.13%	44.16%	49.51%
1984	53.47%	49.30%	56.81%
1988	48.59%	45.30%	51.23%
1992	51.91%	48.65%	54.57%
1996	48.95%	44.91%	52.21%
2000	54.10%	50.03%	57.38%

Northeast

	all	male	female	white	black
1964	69.02%	71.34%	66.95%	69.42%	N/A
1968	66.31%	67.65%	65.12%	67.08%	60.11%
1972	61.80%	62.53%	61.15%	62.93%	52.05%
1976	56.84%	57.60%	56.18%	58.25%	44.96%
1980	55.14%	55.42%	54.91%	57.05%	41.03%
1984	57.29%	56.22%	58.22%	58.91%	49.58%
1988	54.48%	53.76%	55.12%	56.75%	42.56%
1992	59.04%	58.43%	59.59%	62.03%	45.10%
1996	52.81%	52.11%	53.41%	55.31%	44.81%
2000	55.73%	54.41%	56.94%	58.34%	49.03%

Midwest

	all	male	female	white	black
1964	70.81%	72.37%	69.39%	70.55%	N/A
1968	N/A	N/A	N/A	N/A	N/A
1972	N/A	N/A	N/A	N/A	N/A
1976	62.42%	62.30%	62.53%	63.49%	54.56%
1980	62.46%	62.38%	62.53%	63.19%	58.24%
1984	63.32%	62.23%	64.31%	63.81%	64.41%
1988	60.02%	59.07%	60.87%	60.43%	61.26%
1992	65.04%	63.81%	66.16%	66.38%	58.56%
1996	57.63%	56.11%	59.01%	58.81%	53.21%
2000	61.44%	59.57%	63.19%	62.34%	60.82%

South

	all	male	female	white	black
1964	51.30%	55.99%	47.23%	54.08%	N/A
1968	55.34%	58.91%	52.27%	57.18%	46.90%
1972	50.79%	52.73%	49.09%	52.43%	43.22%
1976	52.19%	53.16%	51.34%	54.44%	43.01%
1980	52.26%	52.25%	52.26%	54.03%	44.92%
1984	54.40%	53.63%	55.08%	55.73%	50.82%
1988	51.57%	50.76%	52.30%	53.46%	45.11%
1992	57.86%	55.91%	57.82%	58.72%	52.14%
1996	50.53%	49.21%	51.71%	51.71%	48.31%
2000	54.08%	52.14%	55.84%	54.79%	54.46%

West

	all	male	female	white	black
1964	66.45%	66.99%	65.97%	67.05%	N/A
1968	N/A	N/A	N/A	N/A	N/A
1972	N/A	N/A	N/A	N/A	N/A
1976	54.83%	54.48%	55.15%	56.59%	47.43%
1980	53.92%	52.67%	55.06%	55.74%	49.36%
1984	56.08%	54.88%	57.19%	58.36%	53.70%
1988	52.68%	51.23%	54.05%	54.63%	52.87%
1992	56.40%	54.78%	57.96%	59.38%	51.19%
1996	50.09%	47.91%	52.21%	52.41%	53.61%
2000	50.45%	49.39%	51.46%	53.10%	48.80%

Schooling completed

	8th grade or less	High school, no diploma	High school graduate	Some college	Bachelor or higher
1964	53.62%	59.99%	70.69%	76.67%	82.07%
1968	49.79%	56.54%	67.72%	73.71%	82.30%
1972	42.82%	47.40%	60.80%	70.28%	78.97%
1976	41.45%	44.50%	56.71%	65.46%	77.17%
1980	39.24%	42.26%	55.53%	63.84%	76.60%
1984	40.54%	42.03%	56.28%	65.14%	76.68%
1988	33.77%	38.39%	51.80%	61.54%	74.69%
1992	32.99%	39.06%	62.75%	73.31%	78.82%
1996	28.25%	32.11%	47.41%	58.84%	70.93%
2000	27.36%	34.18%	49.94%	60.85%	72.56%



Income	Less than \$5,000	\$5,000 to \$9,999	\$10,000 to \$14,999	\$15,000 to \$24,999	\$25,000 to \$34,999	\$35,000 to \$49,999	\$50,000 or higher	Not reported
1964	44.23%	52.20%	57.26%	67.01%	72.88%	79.45%	65.33%	
1968	48.72%	53.20%	60.93%	68.23%	73.74%	79.34%	61.76%	
1972	41.11%	47.39%	49.53%	57.01%	65.90%	74.64%	56.42%	
1976	42.91%	50.31%	57.69%	67.62%	74.48%	N/A	N/A	49.90%
1980	36.07%	45.49%	51.46%	60.51%	70.44%	N/A	N/A	51.07%
1984	35.17%	43.81%	51.09%	56.66%	64.68%	70.50%	73.66%	54.48%
1988	31.75%	38.34%	44.72%	52.01%	61.06%	67.34%	72.72%	51.31%
1992	30.24%	37.38%	44.68%	56.93%	67.35%	73.61%	77.72%	55.18%
1996	31.11%	31.11%	37.81%	44.21%	50.31%	57.71%	68.21%	45.91%
2000	28.73%	35.22%	38.25%	43.93%	51.59%	58.08%	69.27%	48.78%

Adjustments were made using the P-20 series of data made available by the U.S. Census Bureau. Because this data traditionally overreports the number of people who voted, it must be adjusted downward based upon the actual certified counts of ballots cast provided by each state. This adjustment is done by subtracting the Census P-20 reported turnout for each year from the CSAE calculated turnout in each year. The difference between total ballots cast and the highest general election turnout is then added to that figure to arrive at an adjustment value for each year. that number is then added to the Census P-20 reported turnout to arrive at the final adjusted figure.

Presidential Electorate Profile: 1964 to 2000

Adjusted Data

	2000 Adj. Turnout	1996 Adj. Turnout	+/- 00-96 points	1992 Adj. Turnout	+/- 00-92 points	1988 Adj. Turnout	+/- 00-88 points	1984 Adj. Turnout	+/- 00-84 points	1980 Adj. Turnout	+/- 00-80 points
18-24	32.89%	30.75%	2.14	40.71%	-7.82	33.27%	-0.38	38.41%	-5.52	36.65%	-3.76
18-20	29.02%	29.51%	-0.49	36.40%	-7.38	30.31%	-1.29	34.35%	-5.33	32.58%	-3.56
21-24	35.98%	31.71%	4.28	43.57%	-7.59	35.42%	0.57	41.13%	-5.15	39.78%	-3.80
25-34	44.23%	41.40%	2.82	51.04%	-6.81	45.03%	-0.80	52.18%	-7.95	51.24%	-7.01
35-44	55.55%	53.21%	2.34	61.49%	-5.94	58.32%	-2.77	61.13%	-5.58	61.09%	-5.54
45-54	62.86%	60.60%	2.26	66.63%	-3.76	63.68%	-0.82	65.18%	-2.32	64.13%	-1.27
55-64	67.41%	66.07%	1.33	69.50%	-2.10	66.40%	1.01	69.69%	-2.28	68.00%	-0.59
65-74	70.44%	68.45%	1.99	71.64%	-1.20	70.12%	0.32	69.42%	1.02	65.99%	4.45
75+	65.49%	61.09%	4.40	62.62%	2.87	59.23%	6.26	58.88%	6.61	54.33%	11.16

\* Until 1972, 18 to 20-year-olds could not vote in federal elections.

male	53.66%	51.11%	2.55	58.07%	-4.41	53.51%	0.15	56.58%	-2.92	55.73%	-2.08
female	56.75%	53.85%	2.90	60.21%	-3.46	55.34%	1.41	58.46%	-1.71	56.08%	0.67

white, all	56.93%	54.34%	2.59	61.48%	-4.55	56.19%	0.74	59.06%	-2.13	57.58%	-0.65
white, male	55.49%	53.11%	2.38	60.51%	-5.02	55.42%	0.07	58.38%	-2.90	57.59%	-2.10
white, female	58.28%	55.51%	2.77	62.33%	-4.04	56.89%	1.39	59.28%	-0.99	57.58%	0.71

black, all	54.10%	48.95%	5.14	51.91%	2.18	48.59%	5.51	53.47%	0.63	47.13%	6.96
black, male	50.03%	44.91%	5.12	48.65%	1.38	45.30%	4.73	49.30%	0.73	44.16%	5.87
black, female	57.38%	52.21%	5.17	54.57%	2.81	51.23%	6.15	56.81%	0.57	49.51%	7.86

Regions

Northeast

all	55.73%	52.81%	2.92	59.04%	-3.31	54.48%	1.25	57.29%	-1.56	55.14%	0.59
male	54.41%	52.11%	2.30	58.43%	-4.03	53.76%	0.65	56.22%	-1.82	55.42%	-1.01
female	56.94%	53.41%	3.53	59.59%	-2.65	55.12%	1.82	58.22%	-1.28	54.91%	2.03
white	58.34%	55.31%	3.03	62.03%	-3.69	56.75%	1.59	58.91%	-0.56	57.05%	1.30
black	49.03%	44.81%	4.22	45.10%	3.93	42.56%	6.48	49.58%	-0.55	41.03%	8.00

Midwest

all	61.44%	57.63%	3.81	65.04%	-3.60	60.02%	1.43	63.32%	-1.88	62.46%	-1.02
male	59.57%	56.11%	3.46	63.81%	-4.24	59.07%	0.50	62.23%	-2.65	62.38%	-2.80
female	63.19%	59.01%	4.18	66.16%	-2.97	60.87%	2.32	64.31%	-1.12	62.53%	0.66
white	62.34%	58.81%	3.53	66.38%	-4.04	60.43%	1.91	63.81%	-1.47	63.19%	-0.85
black	60.82%	53.21%	7.61	58.56%	2.26	61.26%	-0.44	64.41%	-3.59	58.24%	2.58

Presidential Electorate Profile: 1964 to 2000

Adjusted Data

	2000 Adj. Turnout	1996 Adj. Turnout	+/- 00-96 points	1992 Adj. Turnout	+/- 00-92 points	1988 Adj. Turnout	+/- 00-88 points	1984 Adj. Turnout	+/- 00-84 points	1980 Adj. Turnout	+/- 00-80 points
<b>South</b>											
all	54.08%	50.53%	3.56	57.86%	-3.78	51.57%	2.51	54.40%	-0.32	52.26%	1.83
male	52.14%	49.21%	2.93	55.91%	-3.77	50.76%	1.38	53.63%	-1.50	52.25%	-0.11
female	55.84%	51.71%	4.13	57.82%	-1.99	52.30%	3.53	55.08%	0.75	52.26%	3.57
white	54.79%	51.71%	3.08	58.72%	-3.92	53.46%	1.34	55.73%	-0.94	54.03%	0.76
black	54.46%	48.31%	6.15	52.14%	2.32	45.11%	9.35	50.82%	3.64	44.92%	9.54
<b>West</b>											
all	50.45%	50.09%	0.36	56.40%	-5.96	52.68%	-2.23	56.08%	-5.63	53.92%	-3.47
male	49.39%	47.91%	1.48	54.78%	-5.39	51.23%	-1.84	54.88%	-5.50	52.67%	-3.29
female	51.46%	52.21%	-0.75	57.96%	-6.49	54.05%	-2.58	57.19%	-5.73	55.06%	-3.59
white	53.10%	52.41%	0.69	59.38%	-6.29	54.63%	-1.54	58.36%	-5.26	55.74%	-2.65
black	48.80%	53.61%	-4.81	51.19%	-2.40	52.87%	-4.08	53.70%	-4.91	49.36%	-0.57
<b>Schooling completed</b>											
8th grade or less	27.36%	28.25%	-0.90	32.99%	-5.63	33.77%	-6.41	40.54%	-13.18	39.24%	-11.88
High school, no diploma	34.18%	32.11%	2.07	39.06%	-4.88	38.39%	-4.21	42.03%	-7.85	42.26%	-8.08
High school graduate	49.94%	47.41%	2.52	62.75%	-12.81	51.80%	-1.86	56.28%	-6.35	55.53%	-5.59
Some college	60.85%	58.84%	2.01	73.31%	-12.46	61.54%	-0.69	65.14%	-4.29	63.84%	-2.99
Bachelor or higher	72.56%	70.93%	1.63	78.82%	-6.26	74.69%	-2.13	76.68%	-4.12	76.60%	-4.04
<b>Income</b>											
Less than \$5,000	28.73%	31.11%	-2.38	30.24%	-1.50	31.75%	-3.02	35.17%	-6.43	36.07%	-7.34
\$5,000 to \$9,999	35.22%	31.11%	4.11	37.38%	-2.16	38.34%	-3.11	43.81%	-8.59	45.49%	-10.27
\$10,000 to \$14,999	38.25%	37.81%	0.44	44.68%	-6.43	44.72%	-6.47	51.09%	-12.84	51.46%	-13.21
\$15,000 to \$24,999	43.93%	44.21%	-0.28	56.93%	-13.01	52.01%	-8.08	56.66%	-12.74	60.51%	-16.58
\$25,000 to \$34,999	51.59%	50.31%	1.28	67.35%	-15.76	61.06%	-9.48	64.68%	-13.09	70.44%	-18.85
\$35,000 to \$49,999	58.08%	57.71%	0.37	73.61%	-15.52	67.34%	-9.26	70.50%	-12.42	N/A	
\$50,000 or higher	69.27%	68.21%	1.06	77.72%	-8.45	72.72%	-3.45	73.66%	-4.39	N/A	
Not reported	48.78%	45.91%	2.87	55.18%	-6.40	51.31%	-2.53	54.48%	-5.70	51.07%	-2.29

Adjustments were made using the P-20 series of data made available by the U.S. Census Bureau. Because this data traditionally overreports the number of people who voted, it must be adjusted downward based upon the actual certified counts of ballots cast provided by each state. This adjustment is done by subtracting the Census P-20 reported turnout for each year from the CSAE calculated turnout in each year. The difference between total ballots cast and the highest general election turnout is then added to that figure to arrive at an adjustment value for each year. that number is then added to the Census P-20 reported turnout to arrive at the final adjusted figure.

Presidential Electorate Profi  
Adjusted Data

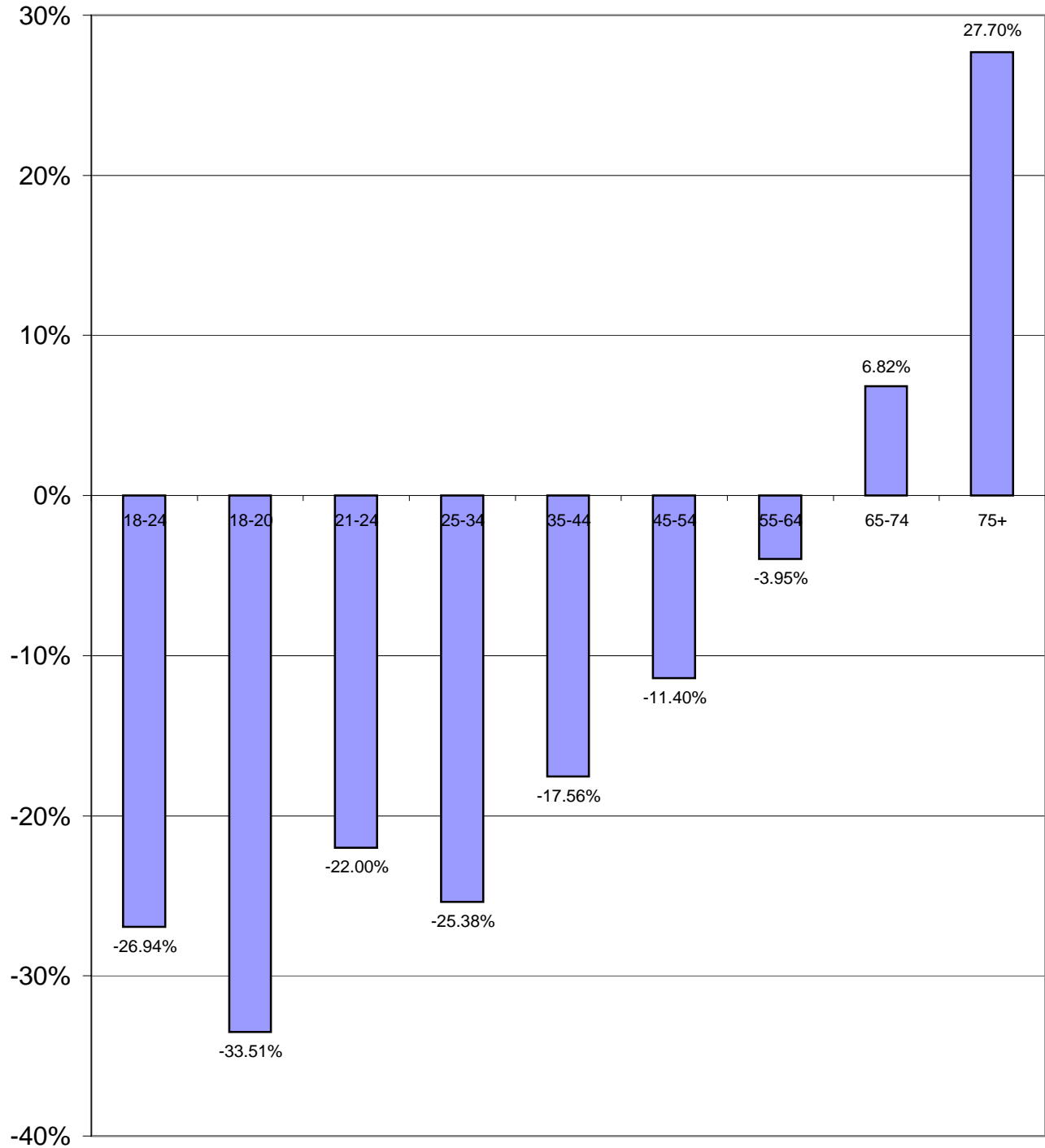
	1976 Adj. Turnout	+/- 00-76 points	1972 Adj. Turnout	+/- 00-72 points	1968 Adj. Turnout	+/- 00-66 points	1964 Adj. Turnout	+/- 00-64 points
18-24	39.49%	-6.60	45.02%	-12.13	*		*	
18-20	35.31%	-6.29	43.64%	-14.62	*		*	
21-24	42.90%	-6.92	46.13%	-10.15	46.35%	-10.37	45.88%	-9.90
25-34	58.55%	-14.33	55.06%	-10.84	57.77%	-13.54	59.27%	-15.05
35-44	60.61%	-5.06	61.70%	-6.15	66.09%	-10.54	67.38%	-11.83
45-54	65.24%	-2.38	66.31%	-3.45	70.34%	-7.48	70.95%	-8.09
55-64	67.03%	0.37	66.11%	1.30	69.96%	-2.56	70.18%	-2.77
65-74	63.74%	6.70	63.52%	6.92	66.72%	3.72	65.94%	4.50
75+	52.17%	13.32	50.99%	14.50	51.53%	13.96	51.28%	14.21
* Until 1972, 18 to 20-year-c								
male	56.89%	-3.23	59.48%	-5.82	65.06%	-11.40	66.50%	-12.84
female	56.12%	0.64	57.38%	-0.62	61.23%	-4.48	61.60%	-4.85
white, all	58.26%	-1.33	59.86%	-2.93	64.35%	-7.42	65.25%	-8.32
white, male	58.78%	-3.29	61.02%	-5.53	66.48%	-10.99	68.00%	-12.51
white, female	57.80%	0.49	58.83%	-0.55	62.46%	-4.18	62.79%	-4.50
black, all	46.04%	8.05	47.51%	6.59	52.87%	1.22	53.08%	1.02
black, male	44.53%	5.50	47.46%	2.57	53.45%	-3.42	53.68%	-3.65
black, female	47.25%	10.13	47.54%	9.84	52.40%	4.98	52.61%	4.77
Regions								
Northeast								
all	56.84%	-1.11	61.80%	-6.07	66.31%	-10.58	69.02%	-13.29
male	57.60%	-3.19	62.53%	-8.13	67.65%	-13.25	71.34%	-16.93
female	56.18%	0.77	61.15%	-4.21	65.12%	-8.18	66.95%	-10.00
white	58.25%	0.09	62.93%	-4.58	67.08%	-8.74	69.42%	-11.08
black	44.96%	4.07	52.05%	-3.02	60.11%	-11.07	N/A	
Midwest								
all	62.42%	-0.98	N/A		N/A		70.81%	-9.37
male	62.30%	-2.73	N/A		N/A		72.37%	-12.79
female	62.53%	0.66	N/A		N/A		69.39%	-6.20
white	63.49%	-1.15	N/A		N/A		70.55%	-8.21
black	54.56%	6.26	N/A		N/A		N/A	

Presidential Electorate Profile  
Adjusted Data

	1976 Adj. Turnout	+/- 00-76 points	1972 Adj. Turnout	+/- 00-72 points	1968 Adj. Turnout	+/- 00-66 points	1964 Adj. Turnout	+/- 00-64 points
<b>South</b>								
all	52.19%	1.89	50.79%	3.29	55.34%	-1.26	51.30%	2.79
male	53.16%	-1.02	52.73%	-0.59	58.91%	-6.77	55.99%	-3.85
female	51.34%	4.50	49.09%	6.75	52.27%	3.56	47.23%	8.60
white	54.44%	0.35	52.43%	2.36	57.18%	-2.38	54.08%	0.71
black	43.01%	11.46	43.22%	11.24	46.90%	7.56	N/A	
<b>West</b>								
all	54.83%	-4.39	N/A		N/A		66.45%	-16.01
male	54.48%	-5.09	N/A		N/A		66.99%	-17.60
female	55.15%	-3.69	N/A		N/A		65.97%	-14.50
white	56.59%	-3.49	N/A		N/A		67.05%	-13.95
black	47.43%	1.37	N/A		N/A		N/A	
<b>Schooling completed</b>								
8th grade or less	41.45%	-14.10	42.82%	-15.46	49.79%	-22.43	53.62%	-26.27
High school, no diploma	44.50%	-10.32	47.40%	-13.22	56.54%	-22.36	59.99%	-25.81
High school graduate	56.71%	-6.77	60.80%	-10.86	67.72%	-17.78	70.69%	-20.75
Some college	65.46%	-4.61	70.28%	-9.43	73.71%	-12.86	76.67%	-15.82
Bachelor or higher	77.17%	-4.61	78.97%	-6.41	82.30%	-9.75	82.07%	-9.51
<b>Income</b>								
Less than \$5,000	42.91%	-14.18	41.11%	-12.38	48.72%	-19.99	44.23%	-15.50
\$5,000 to \$9,999	50.31%	-15.08	47.39%	-12.17	53.20%	-17.98	52.20%	-16.97
\$10,000 to \$14,999	57.69%	-19.44	49.53%	-11.28	60.93%	-22.69	57.26%	-19.01
\$15,000 to \$24,999	67.62%	-23.69	57.01%	-13.08	68.23%	-24.30	67.01%	-23.08
\$25,000 to \$34,999	74.48%	-22.89	65.90%	-14.31	73.74%	-22.16	72.88%	-21.29
\$35,000 to \$49,999	N/A		74.64%	-16.56	79.34%	-21.26	79.45%	-21.37
\$50,000 or higher	N/A		56.42%	12.86	61.76%	7.51	65.33%	3.94
Not reported	49.90%	-1.12						

Adjustments were made used  
Because this data traditional  
based upon the actual certified  
subtracting the Census P-20  
The difference between total  
figure to arrive at an adjusted  
reported turnout to arrive at

## Percentage Change in Presidential Election Turnout Since 1964: By Age



2000 Data.

Since 18- to 20-year-olds could not vote in federal elections before 1972, the percentage change for the 18-20 and the 18-24 categories are calculated since 1972