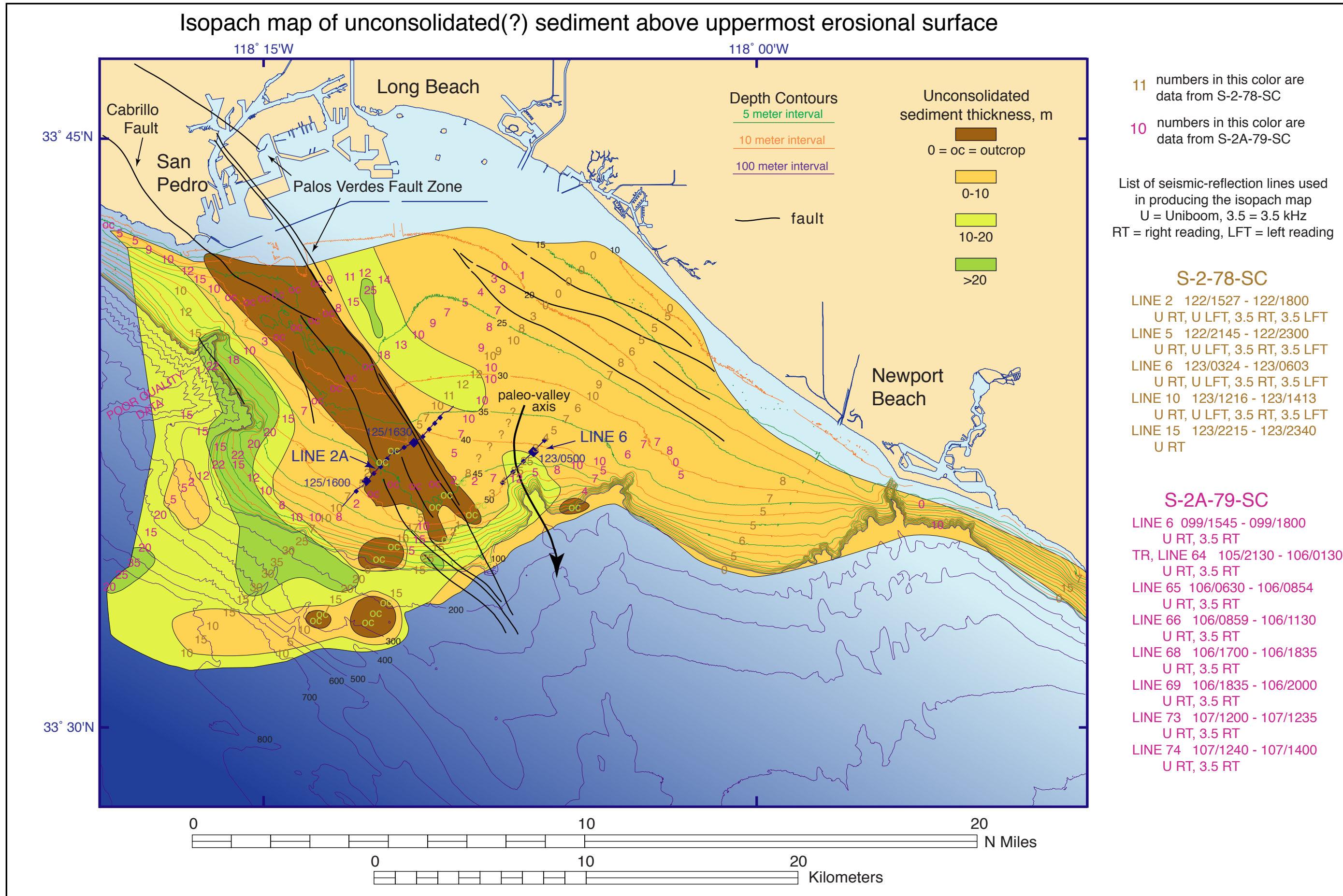


Geologic and Bathymetric Reconnaissance Overview of the San Pedro Shelf Region, Southern California

by Stephen C. Wolf and Christina E. Gutmacher

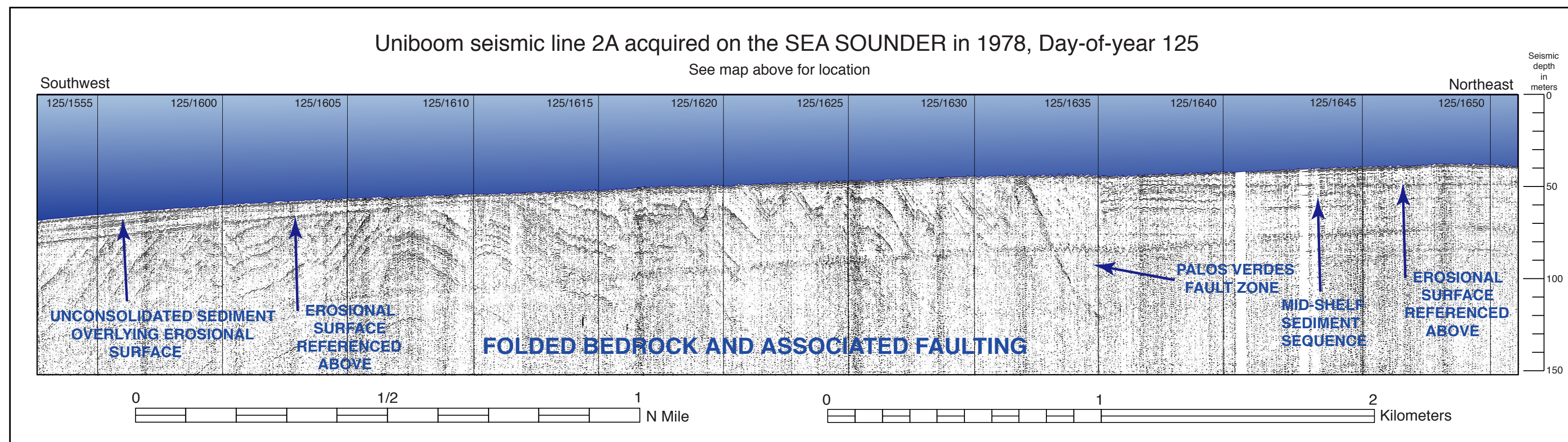
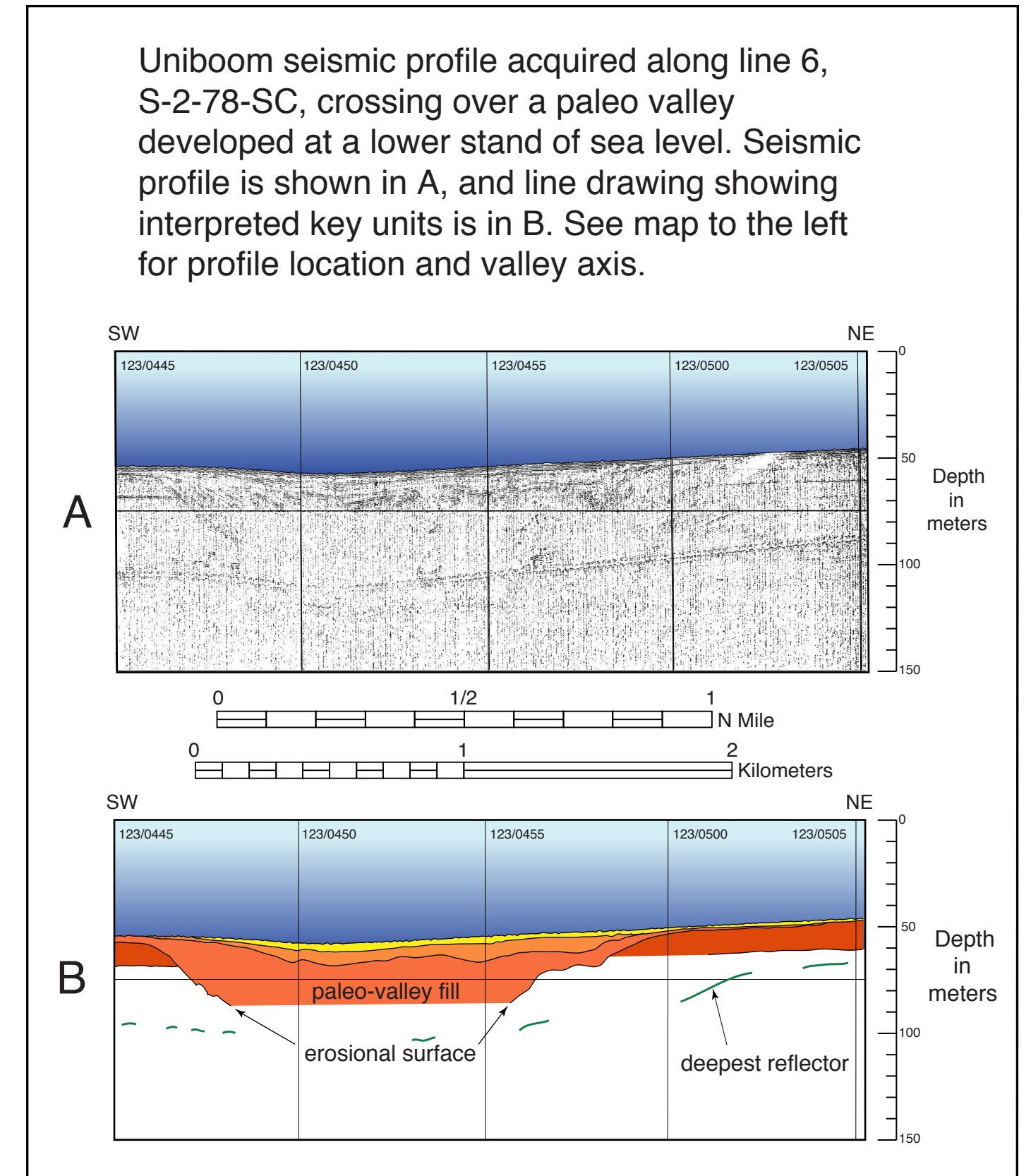


11 numbers in this color are data from S-2-78-SC
10 numbers in this color are data from S-2A-79-SC

List of seismic-reflection lines used in producing the isopach map
U = Uniboom, 3.5 = 3.5 kHz
RT = right reading, LFT = left reading

S-2-78-SC
LINE 2 122/1527 - 122/1800
U RT, U LFT, 3.5 RT, 3.5 LFT
LINE 5 122/2145 - 122/2300
U RT, U LFT, 3.5 RT, 3.5 LFT
LINE 6 123/0324 - 123/0603
U RT, U LFT, 3.5 RT, 3.5 LFT
LINE 10 123/1216 - 123/1413
U RT, U LFT, 3.5 RT, 3.5 LFT
LINE 15 123/2215 - 123/2340
U RT

S-2A-79-SC
LINE 6 099/1545 - 099/1800
U RT, 3.5 RT
TR, LINE 64 105/2130 - 106/0130
U RT, 3.5 RT
LINE 65 106/0630 - 106/0854
U RT, 3.5 RT
LINE 66 106/0859 - 106/1130
U RT, 3.5 RT
LINE 68 106/1700 - 106/1835
U RT, 3.5 RT
LINE 69 106/1835 - 106/2000
U RT, 3.5 RT
LINE 73 107/1200 - 107/1235
U RT, 3.5 RT
LINE 74 107/1240 - 107/1400
U RT, 3.5 RT



The S-2A-79-SC data generally show penetration depths equal to or greater than those shown for S-2-78-SC. Data collected during the 1978 cruise were recorded using a 1/4-second scan in contrast to data collected in 1979 which were recorded at a 1/2-second scan. Differences between cruises such as tuning of the instrumentation, resolution, sea states, power output of the acoustic system, and speed of the vessel over the sea floor all effect the quality of data recorded.

References Sheet 3

(see Sheet 7 for complete reference list)

- for bathymetric contours:
Gardner, James V., and Peter Dartnell, 2002, Multibeam Mapping of the Los Angeles, California, Margin, U.S. Geological Survey Open-File Report OF02-162. <http://geopubs.wr.usgs.gov/open-file/of02-162/>
- for onshore faults:
Jennings, C.W., compiler, 1962, Geologic Atlas of California: Long Beach, California Division of Mines and Geology GAM-007, scale 1:250,000 (reprinted 1992).

Any use of trade, firm, or product names in this publication is for descriptive purposes only and does not imply endorsement by the U.S. Government.

This map was printed on an electronic plotter directly from digital files. Dimensional calibration may vary between electronic plotters and between X and Y directions on the same plotter, and paper may change size due to atmospheric conditions; therefore, scale and proportions may not be true on plots of this map.

For sale by U.S. Geological Survey, Information Services, Box 25286, Federal Center, Denver, CO 80225, 1-888-ASK-USGS

Digital files available on World Wide Web at <http://pubs.usgs.gov/of/2004/1049/>