

Geologic and Bathymetric Reconnaissance Overview of the San Pedro Shelf Region, Southern California

by Stephen C. Wolf and Christina E. Gutmacher

Isopach Map Showing the Approximate Thickness of Uppermost (Holocene?) Sediment Layer

Seismic Data Bases
Line # start day/time – end day/time

K-2-73-SC (in purple)

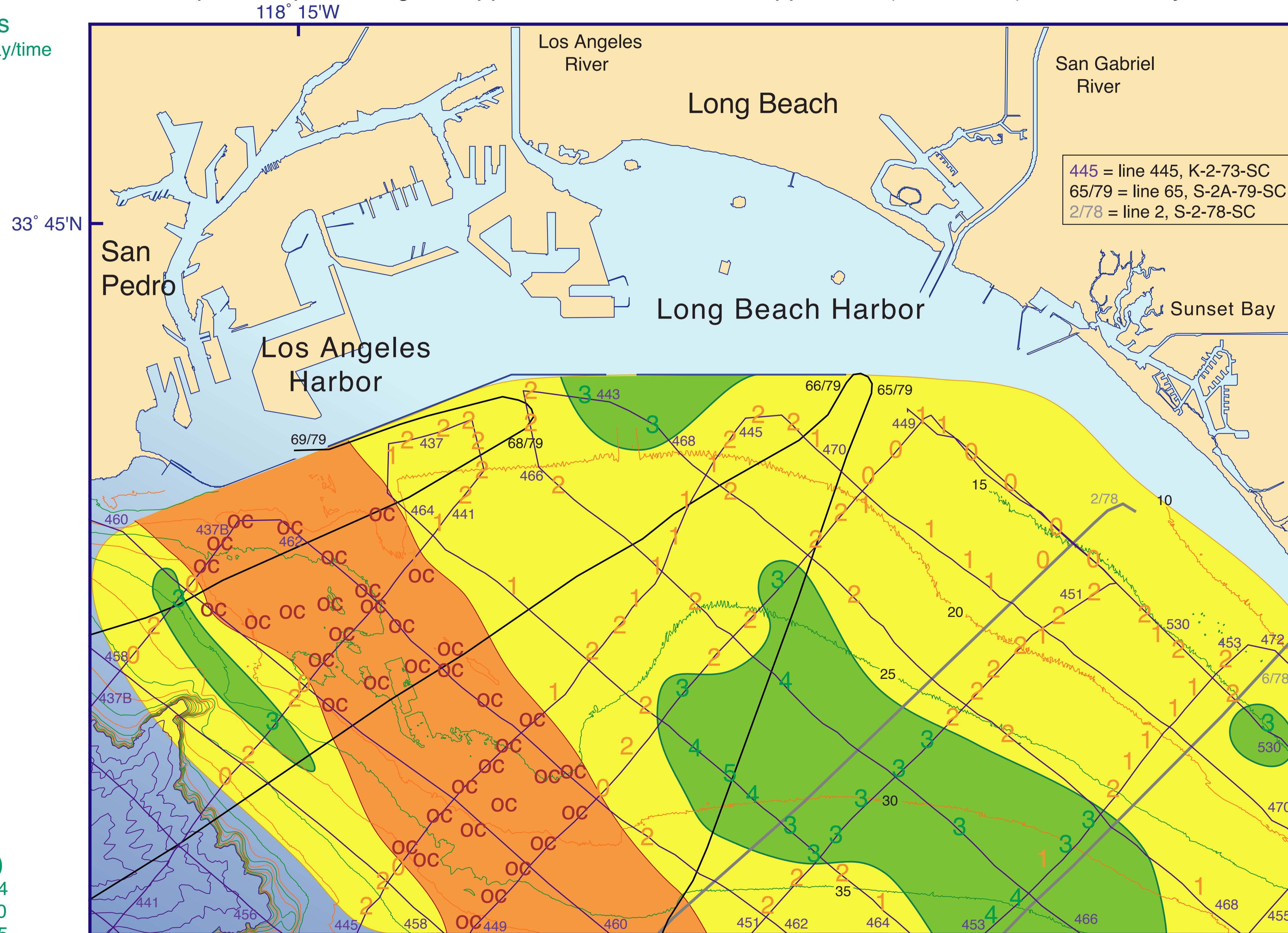
431	134/0200 – 134/0235
433	134/1649 – 134/1707
437B	134/0917 – 134/0953
437	135/0623 – 135/0635
441	135/0425 – 135/0613
443	135/1155 – 135/1203
445	135/1646 – 135/2115
449	135/2131 – 136/0201
450	136/0607 – 136/0631
451	136/0225 – 136/0605
452	134/2043 – 134/2208
452	135/0158 – 135/0349
453	136/0635 – 136/1006
454	134/1341 – 134/1642
455	136/1026 – 136/1505
456	134/0956 – 134/1214
457	136/1530 – 136/2015
458	134/1712 – 134/1957
459	134/1230 – 134/1301
459	134/2000 – 134/2039
460	134/0253 – 134/0600
462	134/0630 – 134/0912
464	135/0640 – 135/0902
465	135/0906 – 135/0917
466	135/0921 – 135/1147
467	135/1417 – 135/1430
468	135/1205 – 135/1400
470	135/1434 – 135/1642
472	136/1010 – 136/1023
528	136/2018 – 136/2024
530	136/2029 – 136/2303

S-2A-79-SC (in black)

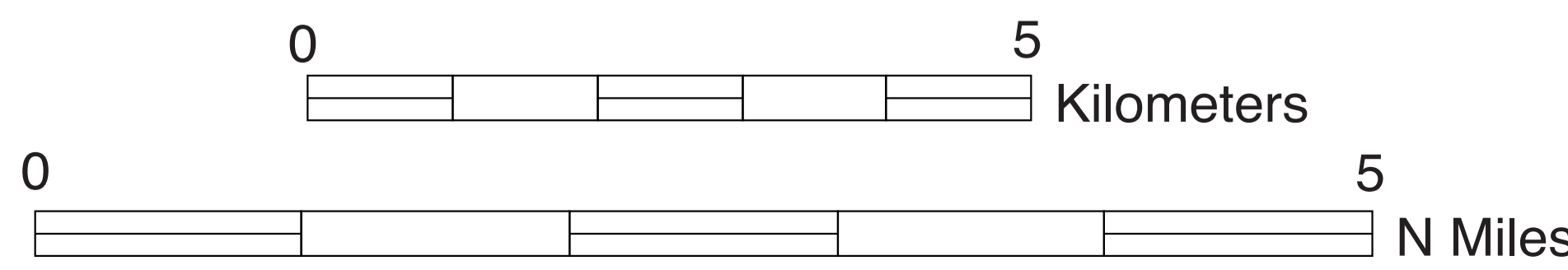
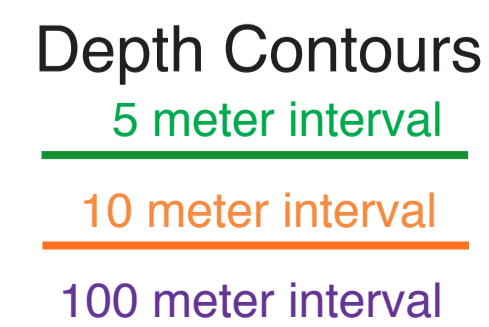
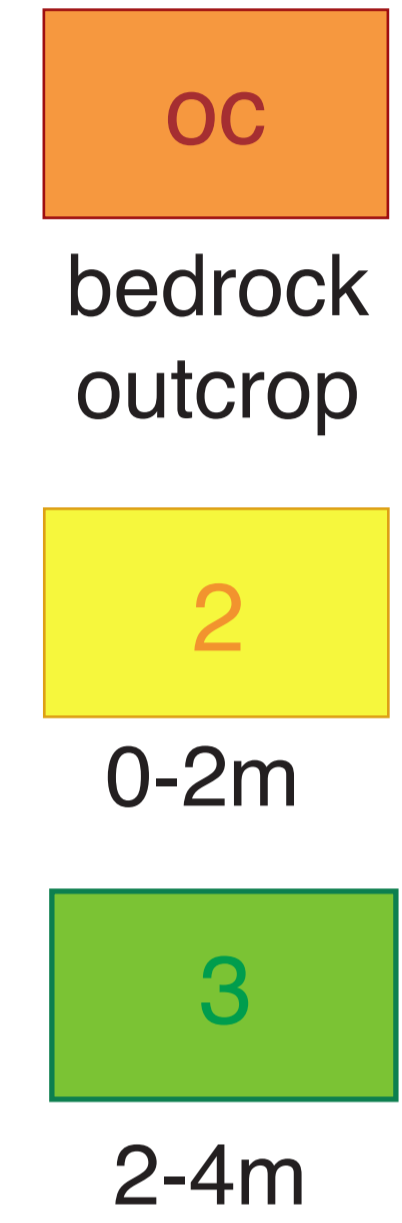
Line 65	106/0630 – 106/0854
Line 66	106/0859 – 106/1130
Line 68	106/1700 – 106/1835
Line 69	106/1838 – 106/2000

S-2-78-SC (in grey)

Line 2	122/1527 – 122/1800
Line 6	123/0324 – 123/0603



Possible Holocene sediment thickness in meters



References Sheet 6
(see Sheet 7 for complete reference list)

For bathymetric contours:
Gardner, James V., and Peter Dartnell, 2002, Multibeam Mapping of the Los Angeles, California, Margin, U.S. Geological Survey Open-File Report OF02-162
<http://geopubs.wr.usgs.gov/open-file/of02-162/>

Any use of trade, firm, or product names in this publication is for descriptive purposes only and does not imply endorsement by the U.S. Government.

This map was printed on an electronic plotter directly from digital files. Dimensional calibration may vary between electronic plotters and between X and Y directions on the same plotter, and paper may change size due to atmospheric conditions; therefore, scale and proportions may not be true on plots of this map.

For sale by U.S. Geological Survey, Information Services, Box 25286, Federal Center, Denver, CO 80225, 1-888-ASK-USGS

Digital files available on World Wide Web at <http://pubs.usgs.gov/of/2004/1049/>

