

GROUND-WATER RECORDS

ANDROSCOGGIN COUNTY

440213070203201 Local number, ANW 1135

LOCATION.--Lat 44°02'13", long 70°20'32", Hydrologic Unit 01040002, about 0.5 mi northeast of Poland Spring. Owner: U.S. Geological Survey.

AQUIFER.--Bedrock of Devonian age.

WELL CHARACTERISTICS.--Drilled observation well, diameter 6 in., depth 150 ft, cased to bedrock, open end.

INSTRUMENTATION.--Electronic water-level recorder.

DATUM.--Elevation of land-surface datum is 310 ft above National Geodetic Vertical Datum of 1929, from topographic map. Measuring point: Top of casing, 2.70 ft above land-surface datum.

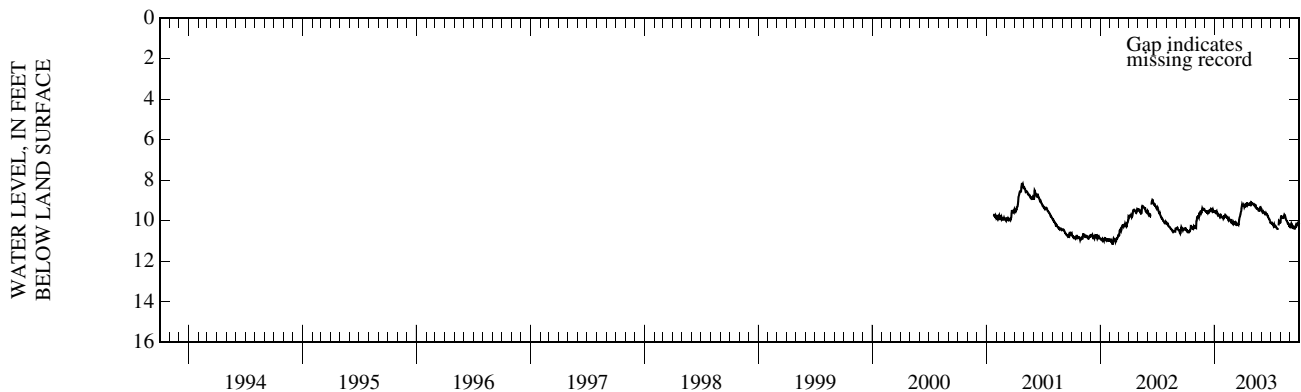
REMARKS.--Missing record, July 25 due to pumping for water quality sampling.

PERIOD OF RECORD.--January 2001 to current year.

EXTREMES FOR PERIOD OF RECORD.--Highest water level recorded, 8.14 ft below land-surface datum, Apr. 24, 2001; lowest recorded, 11.17 ft below land-surface datum, Feb. 9, 2002.

DEPTH TO WATER LEVEL, FEET BELOW LAND SURFACE
WATER YEAR OCTOBER 2002 TO SEPTEMBER 2003
DAILY MEAN VALUES

DAY	OCT	NOV	DEC	JAN	FEB	MAR	APR	MAY	JUN	JUL	AUG	SEP
1	10.38	10.32	9.48	9.55	9.82	10.12	9.23	9.18	9.42	10.11	10.07	10.29
2	10.41	10.35	9.52	9.57	9.73	10.03	9.23	9.16	9.48	10.13	9.84	10.32
3	10.47	10.36	9.53	9.59	9.79	10.06	9.23	9.15	9.54	10.12	9.78	10.33
4	10.50	10.03	9.54	9.49	9.74	10.11	9.24	9.17	9.58	10.14	9.77	10.19
5	10.42	9.99	9.53	9.56	9.76	10.05	9.21	9.18	9.54	10.16	9.79	10.14
6	10.53	9.85	9.54	9.56	9.83	10.11	9.26	9.19	9.53	10.13	9.82	10.17
7	10.48	9.81	9.55	9.55	9.76	10.17	9.33	9.18	9.57	10.17	9.86	10.20
8	10.53	9.80	9.57	9.53	9.80	10.12	9.29	9.23	9.58	10.17	9.86	10.27
9	10.56	9.81	9.64	9.60	9.82	10.10	9.27	9.24	9.59	10.22	9.87	10.32
10	10.56	9.80	9.60	9.65	9.82	10.17	9.28	9.24	9.62	10.27	9.86	10.30
11	10.57	9.80	9.63	9.68	9.84	10.18	9.26	9.27	9.64	10.23	9.84	10.35
12	10.57	9.83	9.60	9.72	9.84	10.15	9.15	9.22	9.68	10.18	9.75	10.37
13	10.54	9.66	9.64	9.69	9.90	10.21	9.22	9.23	9.72	10.23	9.70	10.38
14	10.50	9.62	9.52	9.72	9.94	10.21	9.20	9.29	9.64	10.29	9.72	10.39
15	10.49	9.62	9.49	9.73	9.97	10.20	9.10	9.37	9.62	10.30	9.75	10.39
16	10.43	9.69	9.50	9.74	10.00	10.18	9.13	9.39	9.67	10.30	9.78	10.33
17	10.29	9.56	9.54	9.72	9.97	10.16	9.24	9.38	9.66	10.29	9.86	10.29
18	10.30	9.54	9.53	9.78	9.92	10.17	9.22	9.38	9.66	10.31	9.92	10.32
19	10.28	9.63	9.49	9.74	9.97	10.20	9.20	9.41	9.68	10.35	9.94	10.30
20	10.30	9.60	9.45	9.73	9.98	10.12	9.18	9.41	9.74	10.38	9.98	10.18
21	10.36	9.59	9.41	9.78	10.00	9.96	9.17	9.44	9.78	10.40	10.01	10.20
22	10.37	9.47	9.42	9.74	10.02	9.88	9.17	9.50	9.79	10.41	10.01	10.23
23	10.38	9.38	9.45	9.77	9.92	9.83	9.16	9.51	9.83	10.40	10.08	10.18
24	10.41	9.43	9.49	9.81	10.09	9.78	9.17	9.49	9.88	10.36	10.13	10.12
25	10.41	9.46	9.45	9.83	10.11	9.68	9.22	9.47	9.90	---	10.14	10.11
26	10.34	9.46	9.43	9.82	10.12	9.61	9.23	9.47	9.93	10.23	10.14	10.15
27	10.26	9.43	9.52	9.83	10.09	9.59	9.10	9.39	9.96	9.99	10.16	10.14
28	10.29	9.44	9.50	9.83	10.09	9.54	9.08	9.34	10.04	10.01	10.24	10.10
29	10.31	9.42	9.53	9.84	---	9.39	9.09	9.33	10.08	10.05	10.24	10.12
30	10.30	9.43	9.59	9.90	---	9.28	9.19	9.38	10.07	10.09	10.25	10.17
31	10.33	---	9.54	9.87	---	9.19	---	9.43	---	10.10	10.30	---
LOW	10.57	10.36	9.64	9.90	10.12	10.21	9.33	9.51	10.08	---	10.30	10.39
HIGH	10.26	9.38	9.41	9.49	9.73	9.19	9.08	9.15	9.42	---	9.70	10.10



ANDROSCOGGIN COUNTY —Continued

440213070203201 Local number, ANW 1135 —Continued

PERIOD OF RECORD.--CHEMICAL ANALYSES: April 2001 to current year.

WATER-QUALITY DATA, WATER YEAR OCTOBER 2002 TO SEPTEMBER 2003

Date	Time	Depth to water level, feet below LSD (72019)	Flow rate of well, gal/min (00058)	Pump or flow period prior to sampling, minutes (72004)	Dis-solved oxygen, mg/L (00300)	pH, water, unfltrd field, std units (00400)	pH, water, unfltrd lab, std units (00403)	Specif. conduc-tance, wat unfltrd lab, uS/cm 25 degC (90095)	Specif. conduc-tance, wat unfltrd lab, uS/cm 25 degC (00095)	Temper-ature, water, deg C (00010)	Hard-ness, water, unfltrd mg/L as CaCO3 (00900)	Calcium water, fltrd, mg/L (00915)	Magnes-ium, water, fltrd, mg/L (00925)	
JUL 25...	1310	10.54	3.4	224	.2	8.5	8.2	188	185	9.8	60	15.4	5.35	
		Potas-sium, water, fltrd, mg/L (00935)	Sodium, water, fltrd, mg/L (00930)	Alka-linity, wat flt fxd end lab, mg/L as CaCO3 (29801)	Alka-linity, wat flt inc tit field, mg/L as CaCO3 (39086)	Bromide water, fltrd, mg/L (71870)	Chlor-ide, water, fltrd, mg/L (00940)	Fluor-ide, water, fltrd, mg/L (00950)	Silica, water, fltrd, mg/L (00955)	Sulfate water, fltrd, mg/L (00945)	Residue water, fltrd, sum of consti-tuents mg/L (70301)	Ammonia water, fltrd, mg/L as N (00608)	Nitrite + nitrate water, fltrd, mg/L as N (00631)	Nitrite water, fltrd, mg/L as N (00613)
JUL 25...	1.04	15.9	83	78	E.01	5.61	1.4	12.9	5.8	110	<.04	<.06	<.008	
		Ortho-phos-phate, water, fltrd, mg/L as P (00671)	Alum-inum, water, fltrd, ug/L (01106)	Anti-mony, water, fltrd, ug/L (01095)	Total Arsenic water, fltrd, ug/L (01000)	Arsen-ite, water, fltrd, ug/L as As (62452)	Cadmium water, fltrd, ug/L (01025)	Chrom-ium, water, fltrd, ug/L (01030)	Copper, water, fltrd, ug/L (01040)	Iron, water, fltrd, ug/L (01046)	Lead, water, fltrd, ug/L (01049)	Mangan-ese, water, fltrd, ug/L (01056)	Nickel, water, fltrd, ug/L (01065)	Silver, water, fltrd, ug/L (01075)
JUL 25...	<.02	2	<.30	3.8	3.8	<.04	<.8	<.2	37	<.08	20.9	.18	<.2	
		Zinc, water, fltrd, ug/L (01090)	Uranium natural water, fltrd, ug/L (22703)											
JUL 25...	<1	1.53												

Remark codes used in this report:

< -- Less than
E -- Estimated value
mg/L -- milligrams per liter
ug/L -- micrograms per liter

GROUND-WATER RECORDS

AROOSTOOK COUNTY

471457068353001 Local number, ARW 890

LOCATION.--Lat 47°14'57", long 68°35'30", Hydrologic Unit 01010003, 0.25 mi southeast of the intersection of State Highways 11 and 161 and U.S. Highway 1, Fort Kent. Owner: U.S. Geological Survey.

AQUIFER.--Glacial sand and gravel (ice-contact deposits) of Pleistocene age.

WELL CHARACTERISTICS.--Drilled artesian observation well, diameter 6 in., Nov. 1976 constructed depth 50 ft, open end, Nov. 1982 measured depth 48 ft.

INSTRUMENTATION.--Electronic water-level recorder. Prior to Oct. 1990, daily mean data were published every fifth day.

DATUM.--Elevation of land-surface datum is 530 ft above National Geodetic Vertical Datum of 1929, from topographic map. Measuring point: Top of casing which is 2.05 ft below land-surface datum, and 0.95 ft above the general land surface. Prior to Sept. 23, 2003, floor of recorder shelter at land-surface datum, which was 3.0 ft above the general land surface.

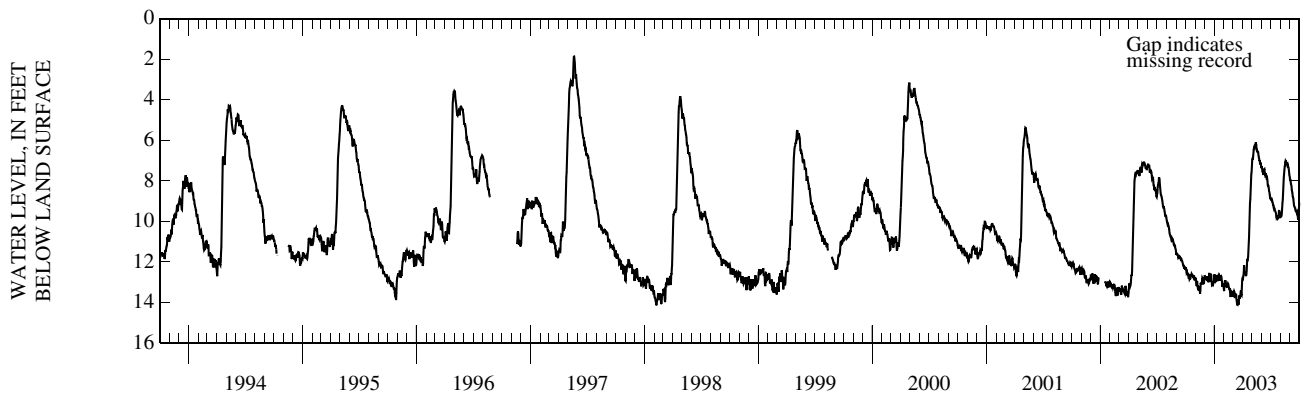
PERIOD OF RECORD.--November 1976 to current year.

REVISED RECORDS.--WDR ME-84-1: 1980, 1981.

EXTREMES FOR PERIOD OF RECORD.--Highest water level recorded, 0.52 ft below land-surface datum, May 2, 1984; lowest recorded, 15.28 ft below land-surface datum, Jan. 22 and 23, 1979.

DEPTH TO WATER LEVEL, FEET BELOW LAND SURFACE
WATER YEAR OCTOBER 2002 TO SEPTEMBER 2003
DAILY MEAN VALUES

DAY	OCT	NOV	DEC	JAN	FEB	MAR	APR	MAY	JUN	JUL	AUG	SEP
1	12.30	12.81	12.66	12.61	13.44	13.70	12.82	7.26	7.38	8.89	9.72	7.94
2	12.30	12.81	12.71	12.76	13.17	13.62	12.84	6.94	7.28	8.95	9.77	8.02
3	12.41	12.91	12.74	12.94	13.00	13.43	12.77	6.89	7.42	8.95	9.75	8.15
4	12.54	13.09	12.77	12.97	13.02	13.52	12.67	6.90	7.54	8.98	9.73	8.17
5	12.51	13.19	12.86	12.95	12.91	13.45	12.52	6.78	7.58	8.96	9.60	8.22
6	12.57	12.94	12.86	12.83	13.03	13.50	12.16	6.67	7.53	9.03	9.33	8.44
7	12.58	12.98	12.79	12.77	13.11	13.73	12.30	6.48	7.70	9.09	9.08	8.53
8	12.58	13.20	12.70	12.65	13.19	13.78	12.50	6.38	7.57	9.17	8.92	8.60
9	12.67	13.28	12.82	12.71	13.23	13.56	12.52	6.38	7.43	9.18	8.58	8.76
10	12.63	13.26	12.79	12.91	13.23	13.63	12.65	6.27	7.41	9.32	8.22	8.81
11	12.63	13.31	12.87	12.95	13.17	13.68	12.65	6.26	7.60	9.38	7.85	8.90
12	12.76	13.42	12.90	12.78	13.10	13.67	12.66	6.27	7.64	9.34	7.67	9.06
13	12.86	13.24	13.00	12.70	13.06	13.87	12.65	6.16	7.75	9.38	7.46	9.21
14	12.82	13.25	12.81	12.67	13.09	13.99	12.46	6.10	7.74	9.44	7.30	9.25
15	12.82	13.41	12.54	12.77	13.15	14.11	12.14	6.23	7.63	9.49	7.27	9.28
16	12.81	13.57	12.69	12.73	13.23	14.12	11.88	6.41	7.72	9.53	7.13	9.33
17	12.66	13.40	12.84	12.82	13.27	13.92	11.92	6.51	7.82	9.57	7.04	9.39
18	12.66	13.02	12.91	12.88	13.34	13.84	11.86	6.49	7.80	9.72	7.07	9.47
19	12.66	13.12	12.92	12.87	13.37	13.99	11.81	6.52	7.85	9.82	7.05	9.47
20	12.58	13.08	12.82	12.78	13.29	14.10	11.44	6.57	7.99	9.79	7.09	9.51
21	12.62	13.06	12.59	12.70	13.53	13.77	11.08	6.58	8.20	9.80	7.12	9.55
22	12.67	12.97	12.69	12.69	13.73	13.65	10.77	6.73	8.24	9.83	7.17	9.59
23	12.68	12.78	12.95	12.72	13.48	13.80	10.13	6.83	8.25	9.86	7.23	9.56
24	12.68	12.82	13.12	12.85	13.47	13.71	9.53	6.89	8.36	9.83	7.20	9.63
25	12.75	13.00	13.09	12.98	13.60	13.62	9.09	7.01	8.48	9.72	7.27	9.71
26	12.77	13.03	13.05	13.23	13.53	13.49	8.91	6.99	8.53	9.78	7.35	9.86
27	12.71	13.06	13.20	13.16	13.54	13.42	8.51	7.10	8.66	9.49	7.38	9.91
28	12.72	13.06	13.08	13.05	13.65	13.62	8.02	7.19	8.82	9.44	7.55	9.74
29	12.79	12.99	13.01	13.11	---	13.64	7.69	7.12	8.91	9.63	7.71	9.34
30	12.84	12.81	12.99	13.13	---	13.31	7.57	7.13	8.84	9.70	7.76	9.08
31	12.81	---	12.85	13.30	---	12.93	---	7.32	---	9.66	7.94	---
LOW	12.86	13.57	13.20	13.30	13.73	14.12	12.84	7.32	8.91	9.86	9.77	9.91
HIGH	12.30	12.78	12.54	12.61	12.91	12.93	7.57	6.10	7.28	8.89	7.04	7.94



AROOSTOOK COUNTY—Continued

464259067572901 Local number, ARW 906

LOCATION.--Lat 46°42'59", long 67°57'29", Hydrologic Unit 01010004, approximately 3.5 mi northeast of the City of Presque Isle. Owner: U.S. Geological Survey.

AQUIFER.--Glacial till of Pleistocene age.

WELL CHARACTERISTICS.--Wash-bored unconfined observation well, diameter 2 in., Oct. 1986 measured depth 40 ft, screened depth 35 to 40 ft, screen slot size 0.006 in.

INSTRUMENTATION.--Electronic water-level recorder. Prior to Oct. 1989, daily mean data were published every fifth day.

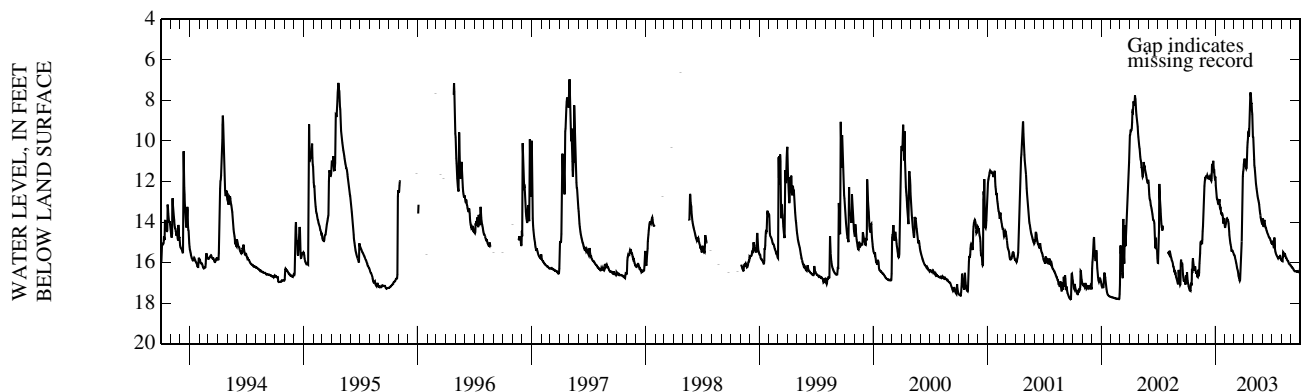
DATUM.--Elevation of land-surface datum is 431 ft above National Geodetic Vertical Datum of 1929, from topographic map. Measuring point: Top of casing, 0.88 ft above land-surface datum. Prior to Aug. 31, 1999, Measuring point: Top of casing 2.88 ft above land-surface datum.

PERIOD OF RECORD.--November 1986 to current year.

EXTREMES FOR PERIOD OF RECORD.--Highest water level measured, 6.62 ft below land-surface datum, Apr. 24, 1998; lowest recorded, 19.38 ft below land-surface datum, Oct. 1-3, 1988.

DEPTH TO WATER LEVEL, FEET BELOW LAND SURFACE
WATER YEAR OCTOBER 2002 TO SEPTEMBER 2003
DAILY MEAN VALUES

DAY	OCT	NOV	DEC	JAN	FEB	MAR	APR	MAY	JUN	JUL	AUG	SEP
1	16.96	16.50	11.78	11.76	14.29	15.59	11.43	9.81	14.06	15.03	15.90	16.18
2	16.47	16.50	11.74	12.21	14.19	15.61	11.16	9.78	13.82	15.10	15.91	16.20
3	16.70	16.59	11.74	12.38	14.11	15.64	10.99	10.21	13.95	14.97	15.93	16.23
4	16.89	16.70	11.81	12.57	14.04	15.69	10.91	10.62	14.15	14.96	15.93	16.25
5	17.00	16.71	11.74	12.77	13.90	15.77	10.87	10.93	14.25	15.03	15.70	16.25
6	17.05	16.56	11.69	12.84	13.82	15.83	11.00	11.21	13.96	15.15	15.48	16.26
7	17.15	16.35	11.74	12.85	13.81	15.88	11.14	11.31	13.89	15.25	15.50	16.29
8	17.23	16.54	11.80	12.93	13.84	15.96	11.25	11.49	14.06	15.29	15.59	16.32
9	17.29	16.68	11.79	13.03	13.90	16.03	11.32	11.72	14.15	14.76	15.65	16.35
10	17.34	16.48	11.78	13.07	13.90	16.12	11.37	11.93	14.22	15.09	15.63	16.39
11	17.37	16.05	11.84	13.05	13.95	16.22	11.32	12.11	14.29	15.34	15.54	16.41
12	17.37	15.82	11.84	13.13	14.08	16.29	10.89	12.23	14.30	15.45	15.59	16.42
13	17.39	15.53	11.84	12.99	14.28	16.34	10.33	12.35	14.39	15.50	15.65	16.43
14	17.13	15.04	11.79	12.87	14.47	16.41	10.06	12.47	14.42	15.55	15.71	16.43
15	17.00	14.97	11.74	13.25	14.64	16.53	9.88	12.59	14.44	15.60	15.75	16.42
16	17.14	14.93	11.79	13.30	14.78	16.64	9.58	12.71	14.51	15.64	15.78	16.42
17	16.83	15.06	11.89	13.27	14.92	16.72	9.55	12.80	14.55	15.67	15.78	16.42
18	16.31	15.04	11.93	13.34	15.04	16.77	9.78	12.88	14.58	15.70	15.82	16.43
19	16.52	15.09	11.96	13.61	15.13	16.86	9.74	12.95	14.62	15.73	15.86	16.44
20	15.98	14.85	11.86	13.54	15.18	16.91	9.31	13.03	14.66	15.76	15.90	16.45
21	15.79	14.45	11.24	13.59	15.34	16.86	8.82	13.14	14.72	15.79	15.91	16.43
22	15.96	14.19	11.16	13.57	15.46	16.64	8.20	13.31	14.75	15.76	15.92	16.45
23	16.11	13.65	11.14	13.59	15.41	16.36	7.63	13.45	14.78	15.74	15.95	16.45
24	16.21	13.09	11.19	13.64	15.41	15.97	7.63	13.56	14.79	15.73	16.00	16.44
25	16.31	12.71	10.98	13.87	15.41	15.47	7.82	13.66	14.81	15.71	16.05	16.46
26	16.39	12.42	11.19	14.07	15.45	14.96	8.15	13.75	14.86	15.77	16.07	16.48
27	16.28	12.22	11.43	14.02	15.49	14.34	8.15	13.84	14.90	15.72	16.07	16.48
28	16.19	12.02	11.39	13.86	15.54	13.60	8.52	13.92	14.96	15.71	16.09	16.45
29	16.33	11.86	11.70	13.80	---	12.88	8.67	13.98	15.03	15.80	16.11	16.30
30	16.45	11.87	11.83	13.99	---	11.74	9.11	14.04	15.04	15.85	16.13	16.31
31	16.55	---	11.81	14.18	---	11.52	---	14.03	---	15.87	16.16	---
LOW	17.39	16.71	11.96	14.18	15.54	16.91	11.43	14.04	15.04	15.87	16.16	16.48
HIGH	15.79	11.86	10.98	11.76	13.81	11.52	7.63	9.78	13.82	14.76	15.48	16.18



GROUND-WATER RECORDS

CUMBERLAND COUNTY

435453070013601 Local number, CW 26

LOCATION.--Lat 43°54'53", long 70°01'36", Hydrologic Unit 01060001, 0.3 mi northwest of the intersection of Durham Road and U.S. Highway 1 in Brunswick. Owner: Brunswick and Topsham Water District.

AQUIFER.--Stratified sand and gravel deposits of Pleistocene age.

WELL CHARACTERISTICS.--Drilled artesian observation well, diameter 12 in., reported depth 101 ft in 1953, screened 81 to 101 ft, Nov. 1982 measured depth 96 ft.

INSTRUMENTATION.--Electronic water-level recorder. Mar. 1990 to Dec. 2000, monthly measurements were published. Oct. 1989 to Mar. 1990 daily mean data were published. Prior to Oct. 1989, daily mean data were published every fifth day.

DATUM.--Elevation of land-surface datum is 139 ft above National Geodetic Vertical Datum of 1929, from topographic map. Measuring point: Top of casing which is at land-surface datum. Prior to July 17, 2003, electric tape gage index, 2.93 ft above land-surface datum.

PERIOD OF RECORD.--April 1958 to current year.

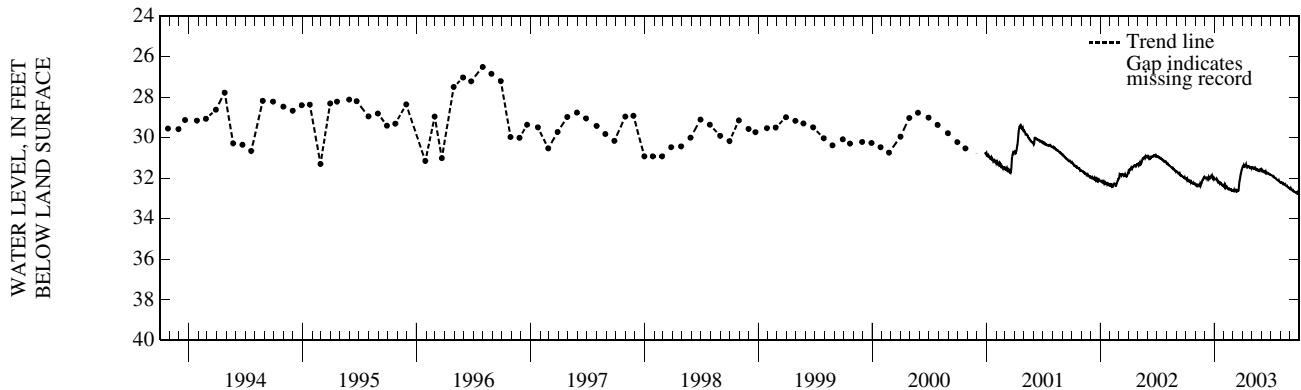
REVISED RECORDS.--WDR ME-82-1: 1978, 1981, WDR ME-83-1: 1977, WDR ME-84-1: 1980, 1981.

EXTREMES FOR PERIOD OF RECORD.--Highest water level measured, 25.95 ft below land-surface datum, June 9, 1984; lowest measured, 36.41 ft below land-surface datum, Feb. 10, 1966.

DEPTH TO WATER LEVEL, FEET BELOW LAND SURFACE
WATER YEAR OCTOBER 2002 TO SEPTEMBER 2003
DAILY MEAN VALUES

DAY	OCT	NOV	DEC	JAN	FEB	MAR	APR	MAY	JUN	JUL	AUG	SEP
1	31.99	32.28	31.97	32.01	32.35	32.61	31.47	31.48	31.58	31.84	32.21	32.52
2	32.00	32.32	32.00	32.05	32.32	32.55	31.43	31.47	31.64	31.85	32.21	32.55
3	32.05	32.35	32.01	32.05	32.41	32.62	31.41	31.51	31.66	31.85	32.23	32.55
4	32.05	32.35	32.01	32.01	32.36	32.62	31.40	31.52	31.66	31.86	32.20	32.51
5	32.02	32.37	31.98	32.08	32.44	32.57	31.36	31.51	31.62	31.87	32.21	32.54
6	32.09	32.29	31.98	32.06	32.47	32.63	31.42	31.50	31.66	31.89	32.23	32.57
7	32.06	32.34	31.97	32.04	32.41	32.64	31.43	31.49	31.68	31.90	32.25	32.58
8	32.12	32.33	31.98	32.02	32.45	32.59	31.39	31.52	31.68	31.89	32.24	32.60
9	32.12	32.34	32.04	32.07	32.46	32.58	31.38	31.52	31.67	31.92	32.27	32.61
10	32.13	32.34	32.00	32.11	32.43	32.63	31.38	31.50	31.70	31.94	32.26	32.60
11	32.15	32.34	32.02	32.15	32.47	32.64	31.36	31.52	31.68	31.93	32.28	32.64
12	32.15	32.37	32.00	32.18	32.47	32.61	31.33	31.48	31.71	31.95	32.30	32.64
13	32.13	32.32	32.03	32.15	32.51	32.66	31.42	31.51	31.72	31.97	32.29	32.66
14	32.17	32.31	31.94	32.20	32.54	32.66	31.41	31.55	31.69	31.99	32.31	32.67
15	32.18	32.31	31.98	32.22	32.55	32.63	31.35	31.60	31.73	31.99	32.31	32.67
16	32.14	32.34	31.98	32.23	32.56	32.62	31.40	31.60	31.76	31.99	32.29	32.68
17	32.16	32.24	32.02	32.21	32.53	32.61	31.48	31.58	31.73	m32.01	32.34	32.69
18	32.20	32.27	32.02	32.25	32.52	32.63	31.47	31.58	31.72	32.04	32.37	32.70
19	32.17	32.32	31.97	32.21	32.55	32.62	31.45	31.59	31.72	32.06	32.38	32.70
20	32.20	32.28	31.94	32.21	32.56	32.48	31.44	31.57	31.76	32.08	32.38	32.70
21	32.23	32.25	31.92	32.25	32.56	32.31	31.41	31.59	31.76	32.08	32.39	32.72
22	32.25	32.17	31.89	32.26	32.56	32.16	31.41	31.62	31.75	32.09	32.38	32.73
23	32.25	32.12	31.90	32.28	32.50	32.09	31.42	31.62	31.78	32.10	32.41	32.70
24	32.26	32.11	31.93	32.32	32.61	32.00	31.45	31.61	31.79	32.12	32.43	32.74
25	32.27	32.08	31.88	32.34	32.62	31.89	31.50	31.61	31.78	32.14	32.44	32.73
26	32.23	32.05	31.94	32.33	32.60	31.81	31.50	31.62	31.79	32.14	32.45	32.75
27	32.25	32.00	31.99	32.36	32.59	31.78	31.46	31.61	31.80	32.11	32.46	32.74
28	32.28	31.98	31.95	32.36	32.60	31.69	31.45	31.56	31.83	32.15	32.49	32.72
29	32.29	31.94	31.98	32.38	---	31.61	31.45	31.55	31.83	32.18	32.49	32.70
30	32.29	31.93	32.04	32.40	---	31.58	31.52	31.58	31.83	32.20	32.51	32.71
31	32.29	---	31.99	32.38	---	31.52	---	31.62	---	32.21	32.52	---
LOW	32.29	32.37	32.04	32.40	32.62	32.66	31.52	31.62	31.83	32.21	32.52	32.75
HIGH	31.99	31.93	31.88	32.01	32.32	31.52	31.33	31.47	31.58	31.84	32.20	32.51

m Measured



CUMBERLAND COUNTY—Continued

435039070261101 Local number, CW 1983

LOCATION.--Lat 43°50'32", long 70°26'12", Hydrologic Unit 01060001, about .5 mi northeast of North Windham. Owner: U.S. Geological Survey.

AQUIFER.--Glacial sand and gravel of Pleistocene age.

WELL CHARACTERISTICS.--Wash-bored water-table observation well, diameter 2 in., depth 37 ft, screened depth 32 ft to 37 ft, screen slot size 0.008 in.

INSTRUMENTATION.--Electronic water-level recorder.

DATUM.--Elevation of land-surface datum is 307.80 ft above National Geodetic Vertical Datum of 1929. Measuring Point: Top of casing, 2.50 ft above land-surface datum.

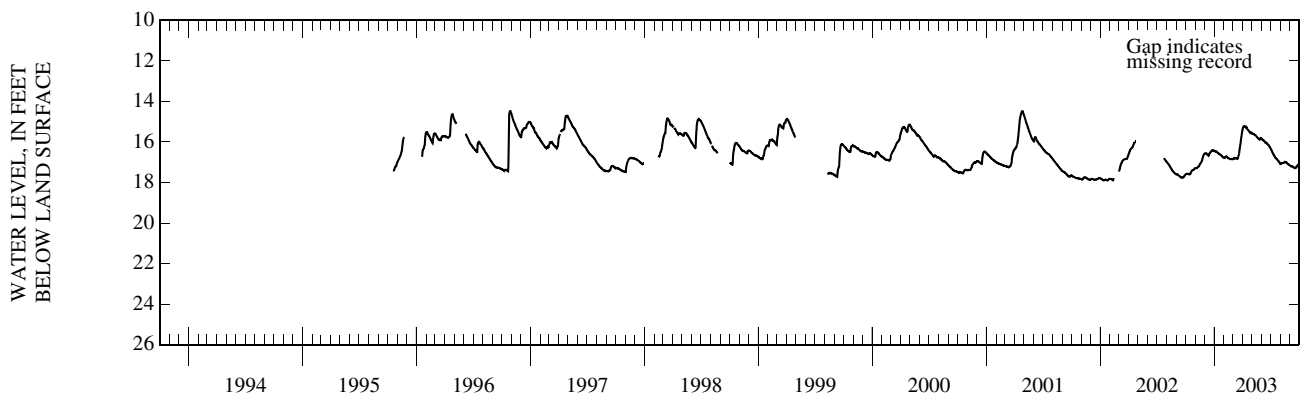
REMARKS.--Chemical analyses Sept. 5, 2003 located in 'Ground-water quality analyses at special study stations' section in this report.

PERIOD OF RECORD.--October 1995 to current year. Records prior to October 1999 have not been published but are available in the files of the U.S. Geological Survey.

EXTREMES FOR PERIOD OF RECORD.--Highest water level measured, 14.47 ft below land-surface datum, Oct. 27-28, 1996; lowest measured, 17.89 ft below land-surface datum, Jan. 12-13, 22-24, and Feb. 10, 2002.

DEPTH TO WATER LEVEL, FEET BELOW LAND SURFACE
WATER YEAR OCTOBER 2002 TO SEPTEMBER 2003
DAILY MEAN VALUES

DAY	OCT	NOV	DEC	JAN	FEB	MAR	APR	MAY	JUN	JUL	AUG	SEP
1	17.60	17.29	16.57	16.44	16.78	16.85	15.41	15.58	15.83	16.35	17.09	17.17
2	17.59	17.28	16.56	16.45	16.78	16.84	15.34	15.59	15.85	16.38	17.07	17.19
3	17.58	17.28	16.56	16.46	16.78	16.83	15.29	15.58	15.88	16.41	17.05	17.20
4	17.58	17.28	16.56	16.45	16.77	16.81	15.26	15.59	15.89	16.44	17.04	17.20
5	17.57	17.29	16.56	16.47	16.75	16.80	15.23	15.59	15.89	16.47	17.04	17.19
6	17.57	17.28	16.57	16.47	16.74	16.80	15.23	15.60	15.91	16.50	17.04	17.19
7	17.57	17.27	16.58	16.47	16.72	16.81	15.23	15.61	15.92	16.54	17.05	17.20
8	17.57	17.25	16.59	16.47	16.72	16.80	15.23	15.62	15.93	16.56	17.04	17.21
9	17.57	17.23	16.62	16.49	16.72	16.79	15.23	15.64	15.94	16.60	17.03	17.22
10	17.58	17.22	16.62	16.51	16.73	16.80	15.25	15.64	15.96	16.64	17.03	17.23
11	17.59	17.21	16.65	16.52	16.74	16.80	15.27	15.66	15.98	16.66	17.03	17.24
12	17.60	17.20	16.65	16.54	16.75	16.80	15.26	15.66	16.00	16.67	17.02	17.25
13	17.60	17.19	16.67	16.55	16.77	16.81	15.29	15.67	16.02	16.70	16.99	17.26
14	17.59	17.15	16.65	16.57	16.79	16.82	15.31	15.68	16.02	16.74	16.98	17.28
15	17.57	17.11	16.60	16.57	16.80	16.82	15.30	15.70	16.03	16.77	16.97	17.29
16	17.57	17.08	16.56	16.59	16.81	16.83	15.33	15.73	16.05	16.79	16.98	17.29
17	17.54	17.06	16.55	16.59	16.82	16.82	15.37	15.75	16.05	16.79	17.00	17.28
18	17.49	17.03	16.54	16.61	16.82	16.76	15.40	15.77	16.06	16.81	16.99	17.28
19	17.46	17.01	16.53	16.62	16.83	16.70	15.41	15.79	16.07	16.83	16.99	17.28
20	17.43	16.98	16.52	16.63	16.84	16.65	15.43	15.81	16.10	16.86	17.01	17.24
21	17.42	16.96	16.47	16.65	16.85	16.57	15.44	15.82	16.11	16.87	17.02	17.22
22	17.40	16.93	16.45	16.66	16.85	16.42	15.46	15.84	16.13	16.88	17.04	17.21
23	17.39	16.87	16.43	16.67	16.84	16.32	15.48	15.85	16.15	16.90	17.07	17.20
24	17.39	16.81	16.42	16.69	16.84	16.21	15.50	15.86	16.17	16.91	17.08	17.17
25	17.38	16.76	16.41	16.70	16.83	16.11	15.53	15.87	16.19	16.93	17.09	17.14
26	17.38	16.71	16.41	16.71	16.83	16.02	15.55	15.88	16.21	16.95	17.10	17.12
27	17.36	16.67	16.41	16.72	16.83	15.93	15.54	15.85	16.23	16.97	17.10	17.11
28	17.34	16.63	16.40	16.74	16.83	15.82	15.53	15.82	16.26	16.99	17.12	17.09
29	17.31	16.60	16.41	16.75	---	15.71	15.54	15.80	16.29	17.02	17.13	17.08
30	17.30	16.58	16.43	16.77	---	15.60	15.57	15.80	16.32	17.05	17.14	17.08
31	17.30	---	16.43	16.78	---	15.49	---	15.82	---	17.07	17.16	---
LOW	17.60	17.29	16.67	16.78	16.85	16.85	15.57	15.88	16.32	17.07	17.16	17.29
HIGH	17.30	16.58	16.40	16.44	16.72	15.49	15.23	15.58	15.83	16.35	16.97	17.08



GROUND-WATER RECORDS

FRANKLIN COUNTY

444302070252401, FW916

LOCATION.--Lat 44°43'02", long 70°25'24", Hydrologic Unit 01030002, about 1.3 mi north of Weld. Owner: U.S. Geological Survey.

AQUIFER.--Bedrock of Devonian age.

WELL CHARACTERISTICS.--Drilled observation well, diameter 6 in., depth 150 ft, cased to bedrock, open end.

INSTRUMENTATION.--Electronic water-level recorder.

DATUM.--Elevation of land-surface datum is 1142 ft above National Geodetic Vertical Datum of 1929, from topographic map. Measuring point: Top of casing, 2.00 ft above land-surface datum.

REMARKS.--Missing record, July 30 to Aug. 1 due to pumping for water quality sampling.

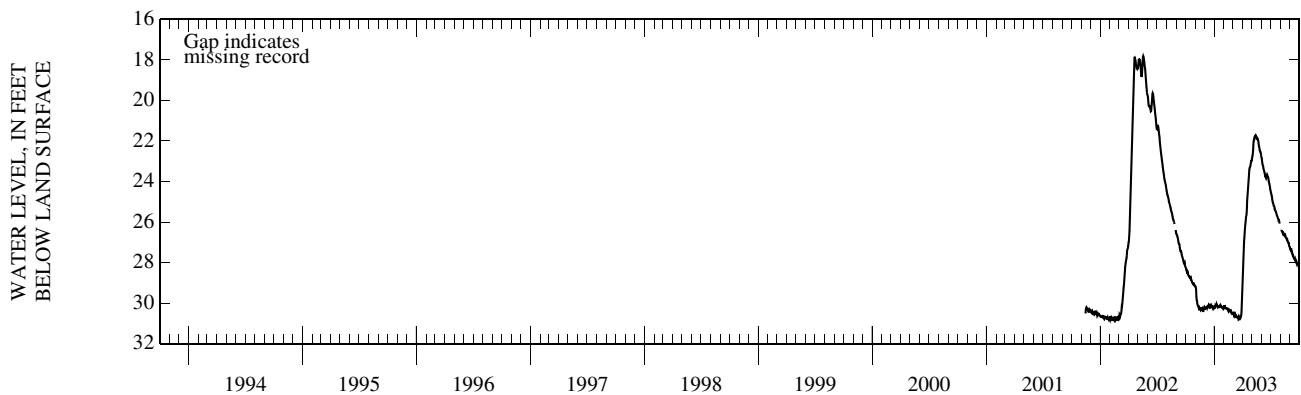
PERIOD OF REOCRDR.--November 2001 to current year.

EXTREMES FOR PERIOD OF RECORD.--Highest water level recorded, 17.81 ft below land-surface datum, May 18, 2002; lowest recorded, 30.87 ft below land-surface datum, Feb. 9, 2002.

DEPTH TO WATER LEVEL, FEET BELOW LAND SURFACE
WATER YEAR OCTOBER 2002 TO SEPTEMBER 2003
DAILY MEAN VALUES

DAY	OCT	NOV	DEC	JAN	FEB	MAR	APR	MAY	JUN	JUL	AUG	SEP
1	28.22	29.17	30.22	30.17	30.20	30.51	29.27	22.90	22.80	24.54	---	27.31
2	28.26	29.21	30.28	30.21	30.10	30.44	28.70	22.78	22.90	24.61	26.44	27.37
3	28.34	29.31	30.28	30.22	30.17	30.49	28.15	22.72	23.04	24.68	26.43	27.39
4	28.40	29.68	30.27	30.10	30.16	30.57	27.68	22.60	23.14	24.75	26.44	27.30
5	28.36	29.87	30.23	30.13	30.20	30.52	27.25	22.39	23.18	24.83	26.44	27.37
6	28.48	29.88	30.20	30.13	30.29	30.57	26.94	22.18	23.23	24.93	26.44	27.45
7	28.47	29.99	30.19	30.11	30.25	30.63	26.75	22.01	23.35	25.03	26.50	27.48
8	28.55	30.07	30.17	30.04	30.25	30.59	26.50	21.92	23.40	25.04	26.54	27.56
9	28.61	30.12	30.23	30.09	30.26	30.56	26.27	21.85	23.45	25.10	26.58	27.64
10	28.63	30.13	30.19	30.14	30.26	30.63	26.10	21.80	23.53	25.20	26.54	27.64
11	28.67	30.15	30.19	30.16	30.27	30.66	25.95	21.79	23.60	25.21	26.57	27.70
12	28.69	30.24	30.15	30.20	30.26	30.64	25.76	21.74	23.68	25.23	26.64	27.76
13	28.68	30.21	30.16	30.17	30.31	30.69	25.71	21.71	23.79	25.32	26.66	27.79
14	28.70	30.24	30.06	30.18	30.34	30.70	25.57	21.74	23.74	25.40	26.67	27.82
15	28.77	30.27	30.08	30.18	30.39	30.70	25.26	21.82	23.79	25.43	26.67	27.84
16	28.76	30.35	30.16	30.18	30.42	30.68	24.97	21.88	23.84	25.44	26.65	27.81
17	28.74	30.24	30.22	30.15	30.40	30.67	24.76	21.87	23.78	25.49	26.71	27.89
18	28.83	30.20	30.22	30.18	30.34	30.71	24.49	21.85	23.70	25.54	26.75	27.96
19	28.84	30.35	30.15	30.14	30.36	30.79	24.22	21.87	23.65	25.60	26.79	27.96
20	28.86	30.34	30.08	30.10	30.38	30.77	23.97	21.90	23.69	25.65	26.82	27.94
21	28.93	30.32	30.06	30.15	30.39	30.67	23.75	21.95	23.75	25.69	26.84	28.02
22	28.98	30.26	30.11	30.15	30.40	30.70	23.56	22.09	23.78	25.73	26.84	28.06
23	29.01	30.24	30.15	30.18	30.31	30.73	23.41	22.20	23.87	25.78	26.90	27.99
24	29.05	30.33	30.17	30.21	30.47	30.77	23.31	22.28	23.97	25.83	26.96	28.03
25	29.07	30.39	30.15	30.23	30.51	30.74	23.29	22.34	24.05	25.88	27.00	28.06
26	29.03	30.39	30.15	30.21	30.53	30.68	23.26	22.43	24.12	25.93	27.02	28.09
27	29.03	30.34	30.22	30.21	30.51	30.66	23.14	22.49	24.19	25.92	27.03	28.09
28	29.10	30.29	30.18	30.21	30.50	30.63	23.07	22.53	24.29	25.99	27.13	28.02
29	29.14	30.23	30.18	30.22	---	30.43	22.98	22.54	24.40	m26.08	27.19	28.01
30	29.14	30.19	30.24	30.27	---	30.14	22.98	22.62	24.46	---	27.22	28.07
31	29.16	---	30.19	30.25	---	29.74	---	22.73	---	---	27.30	---
LOW	29.16	30.39	30.28	30.27	30.53	30.79	29.27	22.90	24.46	---	---	28.09
HIGH	28.22	29.17	30.06	30.04	30.10	29.74	22.98	21.71	22.80	---	---	27.30

m Measured



FRANKLIN COUNTY—Continued

444302070252401, FW916—Continued

PERIOD OF RECORD.--CHEMICAL ANALYSES: November 2001 to current year.

WATER-QUALITY DATA, WATER YEAR OCTOBER 2002 TO SEPTEMBER 2003

Date	Time	Depth to water level, feet below LSD (72019)	Flow rate of well, gal/min (00058)	Pump or flow period prior to sampling, minutes (72004)	Dissolved oxygen, mg/L (00300)	pH, water, unfltrd field, std units (00400)	pH, water, unfltrd lab, std units (00403)	Specif. conductance, wat unfltrd lab, uS/cm 25 degC (90095)	Specif. conductance, wat unfltrd lab, uS/cm 25 degC (00095)	Temperature, water, deg C (00010)	Hardness, water, unfltrd mg/L as CaCO3 (00900)	Calcium water, fltrd, mg/L (00915)	Magnesium, water, fltrd, mg/L (00925)	
JUL 29...	1145	26.08	9.0	65	.3	7.7	7.7	122	118	8.0	49	15.1	2.81	
		Potassium, water, fltrd, mg/L (00935)	Sodium, water, fltrd, mg/L (00930)	Alkalinity, wat flt fxd end lab, mg/L as CaCO3 (29801)	Alkalinity, wat flt inc tit field, mg/L as CaCO3 (39086)	Bromide water, fltrd, mg/L (71870)	Chloride, water, fltrd, mg/L (00940)	Fluoride, water, fltrd, mg/L (00950)	Silica, water, fltrd, mg/L (00955)	Sulfate water, fltrd, mg/L (00945)	Residue water, fltrd, sum of constituents mg/L (70301)	Ammonia water, fltrd, mg/L as N (00608)	Nitrite + nitrate water, fltrd, mg/L as N (00631)	Nitrite water, fltrd, mg/L (00613)
JUL 29...	1.86	5.54	54	53	<.02	1.58	.4	15.9	6.9	82	<.04	<.06	<.008	
		Orthophosphate, water, fltrd, mg/L as P (00671)	Aluminum, water, fltrd, ug/L (01106)	Antimony, water, fltrd, ug/L (01095)	Total Arsenic, water, fltrd, ug/L (01000)	Cadmium water, fltrd, ug/L (01025)	Chromium, water, fltrd, ug/L (01030)	Copper, water, fltrd, ug/L (01040)	Iron, water, fltrd, ug/L (01046)	Lead, water, fltrd, ug/L (01049)	Manganese, water, fltrd, ug/L (01056)	Nickel, water, fltrd, ug/L (01065)	Silver, water, fltrd, ug/L (01075)	Zinc, water, fltrd, ug/L (01090)
JUL 29...	.03	2	<.30	E.1	<.04	<.8	<.2	17	<.08	1.9	.75	<.2	<1	
		Uranium natural water, fltrd, ug/L (22703)												
JUL 29...	4.21													

Remark codes used in this report:
 < -- Less than
 E -- Estimated value
 mg/L -- milligrams per liter
 ug/L -- micrograms per liter

GROUND-WATER RECORDS

HANCOCK COUNTY

444950068220602 Local number, HW 1A

LOCATION.--Lat 44°49'55", long 68°21'59", Hydrologic Unit 01050002, on State Highway 9, 0.25 mi west of the intersection with State Highway 181 in Amherst. Owner: U.S. Geological Survey.

AQUIFER.--Glacial till of Pleistocene age.

WELL CHARACTERISTICS.--Wash-bored unconfined observation well, diameter 2 in., depth 47 ft, screened depth 37 ft to 47 ft, screen slot size 0.006 in.

INSTRUMENTATION.--Electronic water-level recorder.

DATUM.--Elevation of land-surface datum is 344 ft above National Geodetic Vertical Datum of 1929, from topographic map. Measuring point: Top of casing, 3.49 ft above land-surface datum.

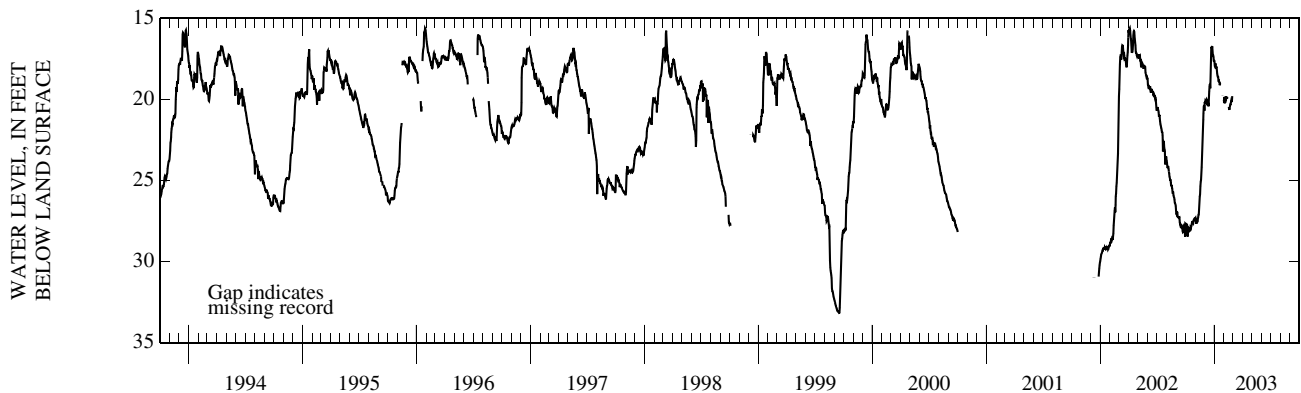
REMARKS.--Missing record, Jan. 21-26, 28, 29, Feb. 13-15 and Feb. 28 to Sept. 30.

PERIOD OF RECORD.--November 1989 to Sept. 2000, December 2001 to current year.

EXTREMES FOR PERIOD OF RECORD.--Highest water level recorded, 15.61 ft below land-surface datum, Jan. 28, 1996 and April 5, 2002; lowest recorded, 33.16 ft below land-surface datum, Sept. 16, 1999.

DEPTH TO WATER LEVEL, FEET BELOW LAND SURFACE
WATER YEAR OCTOBER 2002 TO SEPTEMBER 2003
DAILY MEAN VALUES

DAY	OCT	NOV	DEC	JAN	FEB	MAR	APR	MAY	JUN	JUL	AUG	SEP
1	27.66	27.30	20.16	17.68	20.01	---	---	---	---	---	---	---
2	28.31	27.42	20.22	17.93	19.85	---	---	---	---	---	---	---
3	27.77	27.60	20.10	17.96	20.23	---	---	---	---	---	---	---
4	27.89	27.60	20.14	17.77	20.01	---	---	---	---	---	---	---
5	27.66	27.66	20.11	18.05	20.05	---	---	---	---	---	---	---
6	27.86	27.45	20.04	18.05	20.07	---	---	---	---	---	---	---
7	28.46	27.58	20.00	18.04	19.80	---	---	---	---	---	---	---
8	28.05	27.52	20.07	17.97	19.88	---	---	---	---	---	---	---
9	28.02	27.38	20.35	18.22	19.97	---	---	---	---	---	---	---
10	28.12	27.28	20.17	18.42	19.84	---	---	---	---	---	---	---
11	27.98	27.13	20.29	18.53	19.92	---	---	---	---	---	---	---
12	28.02	27.09	20.27	18.61	19.96	---	---	---	---	---	---	---
13	27.95	26.74	20.42	18.62	---	---	---	---	---	---	---	---
14	28.09	26.34	20.05	18.83	---	---	---	---	---	---	---	---
15	28.08	26.00	19.52	18.83	---	---	---	---	---	---	---	---
16	27.91	25.85	19.21	18.89	20.46	---	---	---	---	---	---	---
17	27.94	25.34	19.09	18.92	20.54	---	---	---	---	---	---	---
18	27.91	25.10	19.07	19.12	20.64	---	---	---	---	---	---	---
19	27.85	24.96	19.31	19.04	20.51	---	---	---	---	---	---	---
20	27.74	24.52	18.53	19.07	20.39	---	---	---	---	---	---	---
21	27.61	24.17	17.42	---	20.32	---	---	---	---	---	---	---
22	27.58	23.63	16.79	---	20.30	---	---	---	---	---	---	---
23	27.51	22.94	16.77	---	20.17	---	---	---	---	---	---	---
24	27.59	22.25	16.84	---	20.07	---	---	---	---	---	---	---
25	27.63	21.66	16.72	---	20.12	---	---	---	---	---	---	---
26	27.47	21.25	16.97	---	20.11	---	---	---	---	---	---	---
27	27.46	20.85	17.28	19.74	19.79	---	---	---	---	---	---	---
28	27.41	20.46	17.29	---	---	---	---	---	---	---	---	---
29	27.40	20.35	17.39	---	---	---	---	---	---	---	---	---
30	27.33	20.70	17.65	20.11	---	---	---	---	---	---	---	---
31	27.33	---	17.57	20.11	---	---	---	---	---	---	---	---
LOW	28.46	27.66	20.42	---	---	---	---	---	---	---	---	---
HIGH	27.33	20.35	16.72	---	---	---	---	---	---	---	---	---



KENNEBEC COUNTY

441849069442001, KW 52

LOCATION.--Lat 44°18'49", long 69°44'20", Hydrologic Unit 01030003, on Cony Road, 0.3 mi south of State Highway 105, in Augusta. Owner: Walter Panek.

AQUIFER.--Glacial till of Pleistocene age.

WELL CHARACTERISTICS.-- Dug water-table observation well, diameter 36 in., depth 22 ft, cased with rock to 22 ft, open end.

INSTRUMENTATION.--Electronic water-level recorder. Prior to Dec. 2000, monthly measurement with chalked steel tape by USGS personnel. Prior to Oct. 1989, daily mean data were published every fifth day.

DATUM.--Elevation of land-surface datum is 220 ft above National Geodetic Vertical Datum of 1929, from topographic map. Measuring point: Top of concrete well at land-surface datum.

REMARKS.--Missing record, Oct. 1 to May 16, May 21 to June 24, and Aug. 28 to Sept. 30.

PERIOD OF RECORD.--December 1960 to current year.

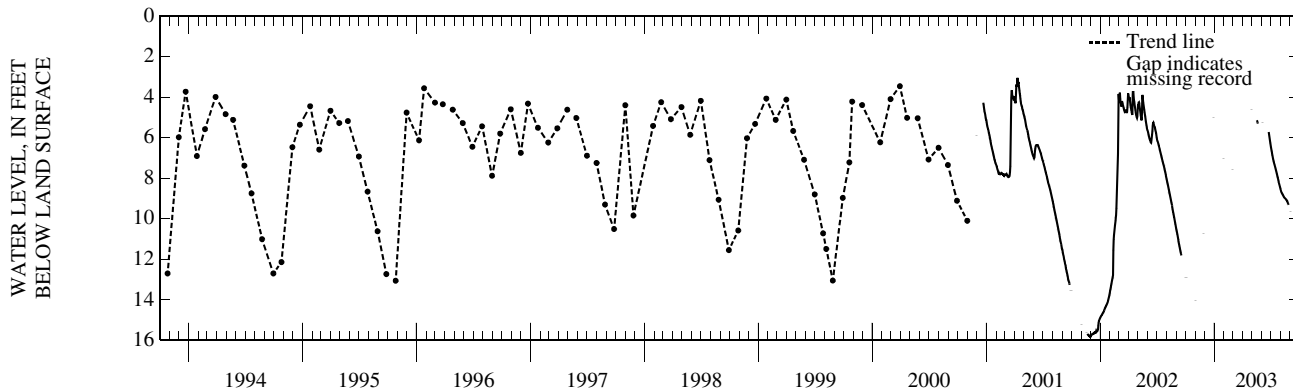
REVISED RECORDS.--WRD ME-82-1: 1978, 1979, 1981.

EXTREMES FOR PERIOD OF RECORD.--Highest water level recorded, 2.91 ft below land-surface datum, May 12, 1989; lowest recorded 15.83 ft below land-surface datum, Nov. 28-29, 2001.

DEPTH TO WATER LEVEL, FEET BELOW LAND SURFACE
WATER YEAR OCTOBER 2002 TO SEPTEMBER 2003
DAILY MEAN VALUES

DAY	OCT	NOV	DEC	JAN	FEB	MAR	APR	MAY	JUN	JUL	AUG	SEP
1	---	---	---	---	---	---	---	---	---	6.47	8.54	---
2	m12.88	---	---	---	---	---	---	---	---	6.56	8.60	m9.66
3	---	---	---	---	---	---	---	---	m5.23	6.64	8.65	---
4	---	---	---	---	---	---	---	---	---	6.71	8.69	---
5	---	---	---	---	---	---	---	---	---	6.79	8.73	---
6	---	---	---	---	---	---	---	---	---	6.87	8.76	---
7	---	---	---	---	---	---	---	---	---	6.96	8.78	---
8	---	---	---	---	---	---	---	---	---	7.04	8.81	---
9	---	---	---	---	---	---	---	---	---	7.10	8.84	---
10	---	---	---	---	---	---	---	---	---	7.17	8.87	---
11	---	---	---	---	---	---	---	---	---	7.23	8.90	---
12	---	---	---	---	---	---	---	---	---	7.29	8.93	---
13	---	---	---	---	---	---	---	---	---	7.34	8.96	---
14	---	---	---	---	---	---	---	---	---	7.40	8.97	---
15	---	---	---	---	---	---	---	---	---	7.47	8.99	---
16	---	---	---	---	---	---	---	---	---	7.53	9.00	---
17	---	---	---	---	---	---	---	5.14	---	7.59	9.01	---
18	---	---	---	---	---	---	---	5.18	---	7.66	9.03	---
19	---	---	---	---	---	---	---	5.24	---	7.72	9.05	---
20	---	---	---	---	---	---	---	5.30	---	7.79	9.07	---
21	---	---	---	---	---	---	---	---	---	7.86	9.10	---
22	---	---	---	---	---	---	---	---	---	7.92	9.13	---
23	---	---	---	---	---	---	---	---	---	7.99	9.16	---
24	---	---	---	---	---	---	---	---	m5.72	8.05	9.20	---
25	---	---	---	---	---	---	---	---	5.83	8.11	9.23	---
26	---	---	---	---	---	---	---	---	5.93	8.17	9.27	---
27	---	m10.75	---	---	---	---	---	---	6.04	8.23	9.32	---
28	---	---	---	---	m7.56	---	---	---	6.15	8.29	---	---
29	---	---	---	---	---	---	---	---	6.27	8.35	---	---
30	---	---	m4.99	---	---	---	m4.61	---	6.37	8.41	---	---
31	m14.02	---	---	m7.04	---	m3.69	---	---	---	8.47	---	---
LOW	---	---	---	---	---	---	---	---	---	8.47	---	---
HIGH	---	---	---	---	---	---	---	---	---	6.47	---	---

m Measured



GROUND-WATER RECORDS

KENNEBEC COUNTY—Continued

440918069564001 Local number, KW 766

LOCATION.--Lat 44°09'18", long 69°56'40", Hydrologic Unit 01030003, 690 ft northeast of the intersection of Hallowell Neck Road, Libby Road, and Plains Road, Litchfield. Owner: U.S. Geological Survey.

AQUIFER.--Glacial sand and gravel (ice-contact deposits) of Pleistocene age.

WELL CHARACTERISTICS.--Drilled unconfined observation well, diameter 6 in., depth 62 ft, cased to 59 ft, open end.

INSTRUMENTATION.--Electronic water-level recorder. Feb. 1990 to Mar. 2001, monthly measurement with chalked steel tape by USGS personnel. Daily mean data were published for Oct. 1989 to Jan. 1990. Prior to Oct. 1989, daily mean data were published every fifth day.

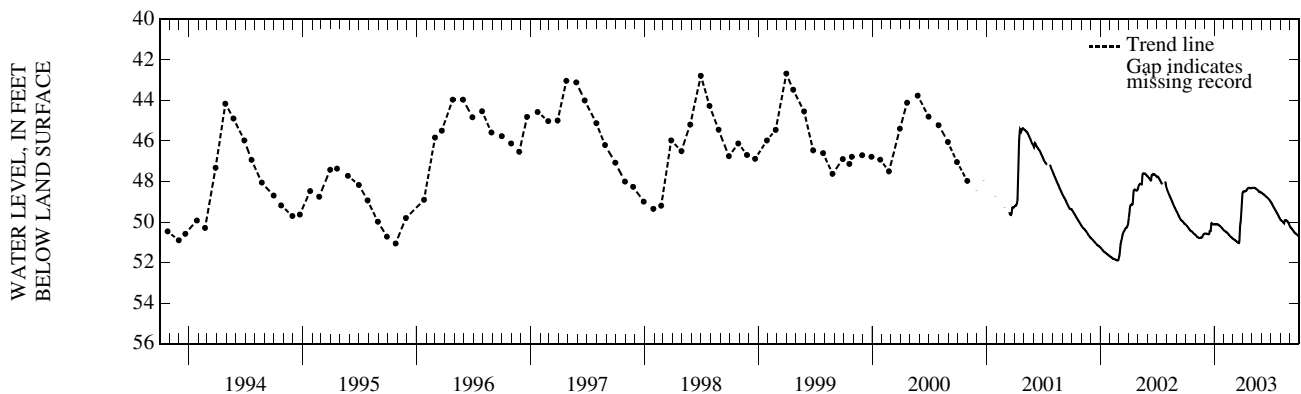
DATUM.--Elevation of land-surface datum is 300 ft above National Geodetic Vertical Datum of 1929, from topographic map. Measuring point: Floor of recorder shelter, at land-surface datum, which is 2.70 ft above the general land surface.

PERIOD OF RECORD.--June 1976 to current year.

EXTREMES FOR PERIOD OF RECORD.--Highest water level recorded, 38.76 ft below land-surface datum, June 2, 1984; lowest recorded, 51.89 ft below land-surface datum, Feb. 22-26, 2002.

DEPTH TO WATER LEVEL, FEET BELOW LAND SURFACE
WATER YEAR OCTOBER 2002 TO SEPTEMBER 2003
DAILY MEAN VALUES

DAY	OCT	NOV	DEC	JAN	FEB	MAR	APR	MAY	JUN	JUL	AUG	SEP
1	50.12	50.63	50.57	50.12	50.42	50.82	48.60	48.32	48.55	49.01	49.89	50.25
2	50.14	50.65	50.57	50.12	50.43	50.83	48.53	48.32	48.56	49.04	49.91	50.27
3	50.16	50.66	50.57	50.12	50.44	50.84	48.51	48.31	48.57	49.06	49.92	50.28
4	50.17	50.68	50.57	50.12	50.45	50.85	48.50	48.31	48.60	49.09	49.93	50.28
5	50.19	50.70	50.57	50.11	50.46	50.86	48.49	48.31	48.61	49.12	49.94	50.30
6	50.21	50.72	50.57	50.11	50.47	50.87	48.49	48.31	48.61	49.14	49.95	50.32
7	50.23	50.73	50.58	50.10	50.48	50.88	48.49	48.31	48.63	49.17	49.97	50.35
8	50.25	50.74	50.58	50.10	50.49	50.89	48.48	48.31	48.64	49.20	49.98	50.37
9	50.27	50.75	50.58	50.10	50.51	50.90	48.48	48.31	48.65	49.23	50.00	50.39
10	50.29	50.76	50.59	50.11	50.52	50.91	48.47	48.32	48.66	49.26	50.03	50.41
11	50.32	50.77	50.59	50.11	50.53	50.93	48.47	48.33	48.68	49.29	50.05	50.43
12	50.34	50.78	50.60	50.12	50.54	50.94	48.46	48.33	48.69	49.31	50.06	50.45
13	50.37	50.79	50.60	50.13	50.56	50.95	48.45	48.34	48.71	49.34	49.98	50.48
14	50.39	50.79	50.60	50.14	50.58	50.97	48.43	48.35	48.73	49.37	49.92	50.50
15	50.41	50.78	50.59	50.15	50.60	50.98	48.41	48.36	48.73	49.40	49.91	50.53
16	50.42	50.78	50.50	50.16	50.62	50.99	48.37	48.38	48.74	49.43	49.92	50.54
17	50.43	50.78	50.45	50.17	50.63	51.01	48.36	48.39	48.76	49.45	49.92	50.54
18	50.44	50.77	50.44	50.19	50.65	51.03	48.35	48.40	48.77	49.48	49.91	50.56
19	50.45	50.77	50.44	50.20	50.67	51.04	48.33	48.42	48.78	49.51	49.91	50.57
20	50.45	50.76	50.44	50.21	50.69	51.04	48.32	48.43	48.80	49.54	49.92	50.58
21	50.47	50.76	50.29	50.23	50.70	51.02	48.32	48.44	48.81	49.57	49.93	50.60
22	50.48	50.76	50.07	50.24	50.72	50.91	48.31	48.46	48.83	49.60	49.94	50.62
23	50.50	50.75	50.05	50.26	50.74	50.53	48.31	48.48	48.85	49.63	49.96	50.63
24	50.52	50.70	50.08	50.27	50.75	50.20	48.31	48.50	48.87	49.66	49.99	50.64
25	50.53	50.66	50.09	50.29	50.76	50.05	48.32	48.51	48.88	49.68	50.01	50.66
26	50.55	50.63	50.10	50.31	50.78	49.97	48.34	48.52	48.90	49.71	50.04	50.67
27	50.57	50.61	50.11	50.33	50.79	49.84	48.33	48.53	48.92	49.74	50.06	50.68
28	50.58	50.60	50.11	50.35	50.80	49.59	48.33	48.53	48.94	49.77	50.10	50.69
29	50.60	50.59	50.11	50.36	---	49.31	48.32	48.52	48.97	49.80	50.13	50.68
30	50.61	50.58	50.11	50.38	---	49.10	48.32	48.53	48.99	49.83	50.17	50.67
31	50.62	---	50.12	50.40	---	48.81	---	48.54	---	49.86	50.21	---
LOW	50.62	50.79	50.60	50.40	50.80	51.04	48.60	48.54	48.99	49.86	50.21	50.69
HIGH	50.12	50.58	50.05	50.10	50.42	48.81	48.31	48.31	48.55	49.01	49.89	50.25



KENNEBEC COUNTY—Continued

440810069553601 Local number, KW 872A

LOCATION.--Lat 44°08'17", long 69°55'36", Hydrologic Unit 01030003, on Small Road, 0.40 mi north of State Highway 197, Litchfield. Owner: Stephen Condon.

AQUIFER.--Bedrock of Devonian age.

WELL CHARACTERISTICS.--Drilled artesian observation well, diameter 6 in., depth 404 ft, cased to bedrock, open end.

INSTRUMENTATION.--Electronic water-level recorder. Dec. 1989 to Dec. 2000, monthly measurement with chalked steel tape by USGS personnel. Daily mean data were published for Oct.-Nov. 1989. Prior to Oct. 1989, daily mean data were published every fifth day.

DATUM.--Elevation of land-surface datum is 220 ft above National Geodetic Vertical Datum of 1929, from topographic map. Measuring point: Top of casing, at land-surface datum, which is 2.20 ft above the general land surface.

REMARKS.--Missing record, Jan. 7 to June 17 and July 31.

PERIOD OF RECORD.--November 1978 to current year.

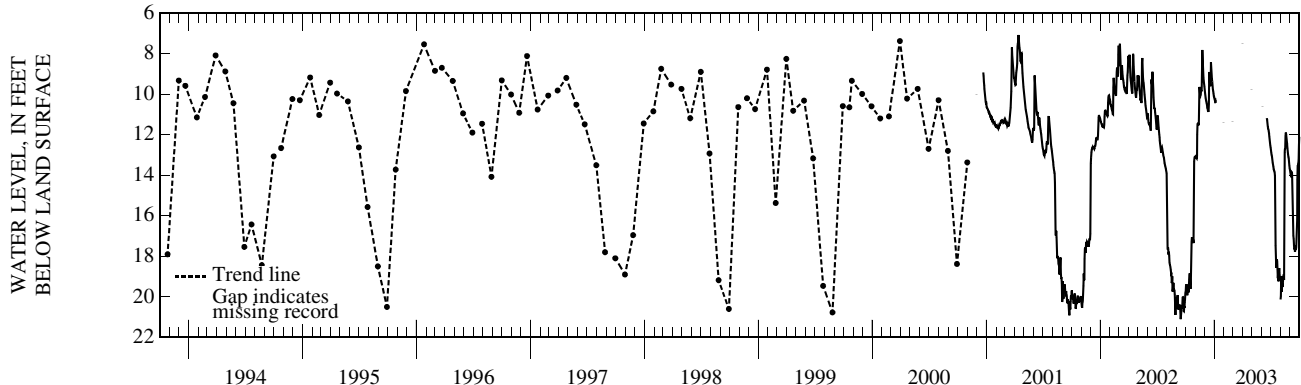
REVISED RECORDS.--WDR ME-82-1: 1980, WDR ME-84-1: 1980, 1981.

EXTREMES FOR PERIOD OF RECORD.--Highest water level recorded, 5.47 ft below land-surface datum, May 12, 1989; lowest recorded, 21.10 ft below land-surface datum, Sept. 15, 2002.

DEPTH TO WATER LEVEL, FEET BELOW LAND SURFACE
WATER YEAR OCTOBER 2002 TO SEPTEMBER 2003
DAILY MEAN VALUES

DAY	OCT	NOV	DEC	JAN	FEB	MAR	APR	MAY	JUN	JUL	AUG	SEP
1	19.76	13.06	9.77	10.21	---	---	---	---	---	12.76	20.13	13.84
2	19.47	13.11	9.94	10.29	---	---	---	---	---	12.89	19.97	13.95
3	19.39	13.14	10.06	10.34	---	---	---	---	m10.63	12.99	18.98	14.03
4	19.54	13.15	10.20	10.32	---	---	---	---	---	13.06	19.09	14.10
5	19.46	13.17	10.29	10.43	---	---	---	---	---	13.14	19.76	13.84
6	19.93	13.05	10.36	10.44	---	---	---	---	---	13.27	19.33	13.87
7	19.57	12.00	10.44	---	---	---	---	---	---	13.39	19.52	13.94
8	19.44	11.47	10.53	---	---	---	---	---	---	13.48	19.38	14.58
9	19.43	11.46	10.67	---	---	---	---	---	---	13.57	19.14	15.82
10	19.78	11.47	10.72	---	---	---	---	---	---	13.69	18.96	16.48
11	19.47	11.50	10.82	---	---	---	---	---	---	13.76	18.97	16.99
12	19.14	11.54	10.83	---	---	---	---	---	---	13.79	19.17	17.13
13	18.93	10.37	10.87	---	---	---	---	---	---	13.86	14.87	17.46
14	18.84	9.64	10.49	---	---	---	---	---	---	14.03	12.88	17.66
15	19.45	9.76	8.99	---	---	---	---	---	---	15.69	12.72	17.61
16	19.61	10.02	8.91	---	---	---	---	---	---	17.47	12.69	17.78
17	19.38	10.06	9.19	---	---	---	---	---	---	18.05	12.06	17.70
18	18.96	9.97	9.41	---	---	---	---	---	---	11.19	11.90	17.46
19	17.96	9.83	9.57	---	---	---	---	---	---	11.27	11.99	17.66
20	17.28	9.85	9.57	---	---	---	---	---	---	11.42	18.15	12.18
21	17.07	9.84	8.43	---	---	---	---	---	---	11.58	18.25	12.33
22	17.15	8.89	8.67	---	---	---	---	---	---	11.68	18.74	12.47
23	17.22	7.82	9.01	---	---	---	---	---	---	11.73	19.08	12.67
24	17.21	8.27	9.26	---	---	---	---	---	---	11.83	18.80	12.84
25	17.17	8.69	9.39	---	---	---	---	---	---	11.95	19.24	12.99
26	17.35	8.97	9.58	---	---	---	---	---	---	12.11	19.16	13.09
27	15.12	9.17	9.77	---	---	---	---	---	---	12.25	18.72	13.16
28	13.30	9.36	9.86	---	m11.36	---	---	---	---	12.40	18.58	13.35
29	13.16	9.50	9.97	---	---	---	---	---	---	12.54	18.84	13.53
30	13.11	9.62	10.11	---	---	---	m9.77	---	---	12.64	m19.14	13.66
31	13.08	---	10.13	m11.41	---	m7.50	---	---	---	---	---	13.76
LOW	19.93	13.17	10.87	---	---	---	---	---	---	---	20.13	17.78
HIGH	13.08	7.82	8.43	---	---	---	---	---	---	---	11.90	12.10

m Measured



GROUND-WATER RECORDS

KENNEBEC COUNTY—Continued

440810069553601 Local number, KW 872A—Continued

PERIOD OF RECORD.--CHEMICAL ANALYSES: July 2003.

WATER-QUALITY DATA, WATER YEAR OCTOBER 2002 TO SEPTEMBER 2003

Date	Time	Depth to water level, feet below LSD (72019)	Flow rate of well, gal/min (00058)	Pump or flow period prior to sampling, minutes (72004)	Dis-solved oxygen, mg/L (00300)	pH, water, unfltrd field, std units (00400)	pH, water, unfltrd lab, std units (00403)	Specif. conduc-tance, wat unfltrd lab, uS/cm 25 degC (90095)	Specif. conduc-tance, wat unfltrd lab, uS/cm 25 degC (00095)	Temper-ature, water, deg C (00010)	Hard-ness, water, unfltrd mg/L as CaCO3 (00900)	Calcium water, unfltrd mg/L (00915)	Magnes-ium, water, unfltrd mg/L (00925)		
JUL 30...	1215	19.14	2.8	58	5.7	6.8	6.8	286	287	10.0	110	40.6	2.65		
			Potas-sium, water, fltrd mg/L (00935)	Sodium, water, fltrd mg/L (00930)	Alka-linity, wat flt fxd end lab, mg/L as CaCO3 (29801)	Alka-linity, wat flt inc tit field, mg/L as CaCO3 (39086)	Bromide water, fltrd mg/L (71870)	Chlor-ide, water, fltrd mg/L (00940)	Fluor-ide, water, fltrd mg/L (00950)	Silica, water, fltrd mg/L (00955)	Sulfate water, fltrd mg/L (00945)	Residue water, fltrd, sum of consti-tuents mg/L (70301)	Nitrite + nitrate water, fltrd mg/L as N (00631)	Nitrite water, fltrd mg/L as N (00613)	
JUL 30...	4.15	7.67	71	68	.03	37.2	<.2	11.3	13.7	158	<.04	E.04	<.008		
			Ortho-phos-phate, water, fltrd mg/L as P (00671)	Alum-inum, water, fltrd ug/L (01106)	Anti-mony, water, fltrd ug/L (01095)	Total Arsenic water, fltrd ug/L (01000)	Arsen-ite, water, fltrd ug/L as As (62452)	Cadmium water, fltrd ug/L (01025)	Chrom-ium, water, fltrd ug/L (01030)	Copper, water, fltrd ug/L (01040)	Iron, water, fltrd ug/L (01046)	Lead, water, fltrd ug/L (01049)	Mangan-ese, water, fltrd ug/L (01056)	Nickel, water, fltrd ug/L (01065)	Silver, water, fltrd ug/L (01075)
JUL 30...	<.09	3	<.30	.7	.3	E.04	E.8	.6	10	.13	7.6	6.12	<.2		
			Zinc, water, fltrd ug/L (01090)	Uranium natural water, fltrd ug/L (22703)											
JUL 30...	14	6.84													

Remark codes used in this report:

< -- Less than
E -- Estimated value
mg/L -- milligrams per liter
ug/L -- micrograms per liter

OXFORD COUNTY

443647070552302 Local number, OW 400A

LOCATION.--Lat 44°46'37", long 70°55'23", Hydrologic Unit 01040001, at Middle Dam, Lower Richardson Lake. Owner: U.S. Geological Survey.

AQUIFER.--Glacial till of Pleistocene age.

WELL CHARACTERISTICS.--Wash-bored unconfined observation well, diameter 2 in., depth 23.6 ft, screened depth 18.6 to 23.6 ft, screen slot size 0.006 in.

INSTRUMENTATION.--Electronic water-level recorder. Prior to Dec. 7, 2001, weekly measurement with chalked steel tape by local observer. Daily mean data were published from Dec. 1999 to Oct. 2000 and from June 1991 to May 1995. Prior to June 1991 and June 1995 to Dec. 1999, monthly measurements were published.

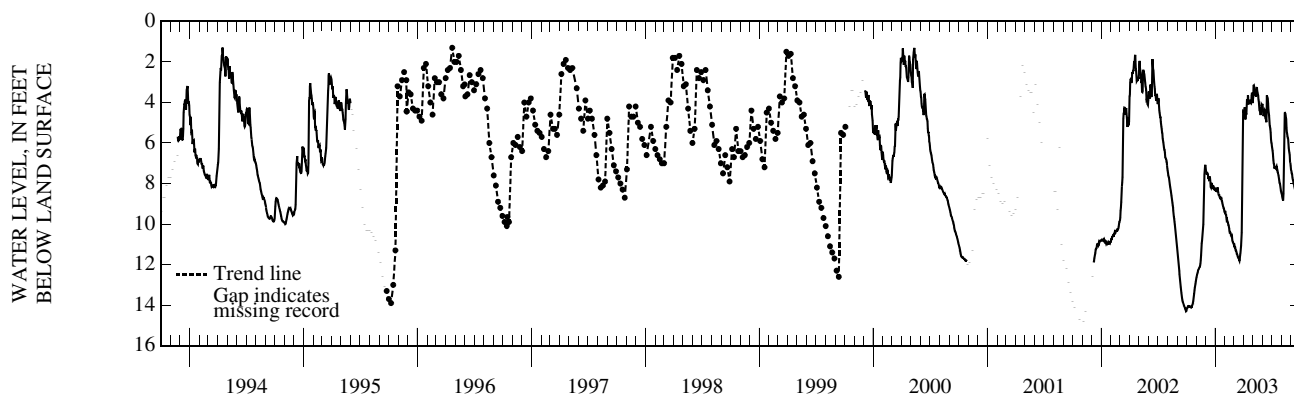
DATUM.--Elevation of land-surface datum is 1,444 ft above National Geodetic Vertical Datum of 1929, from topographic map. Measuring point: Top of casing, 1.50 ft above land-surface datum.

PERIOD OF RECORD.--October 1989 to October 2000. December 2001 to current year.

EXTREMES FOR PERIOD OF RECORD.--Highest water level recorded, 1.29 ft below land-surface datum, Apr. 16, 1994; lowest measured, 14.80 ft below land-surface datum, Nov. 4, 2001.

DEPTH TO WATER LEVEL, FEET BELOW LAND SURFACE
WATER YEAR OCTOBER 2002 TO SEPTEMBER 2003
DAILY MEAN VALUES

DAY	OCT	NOV	DEC	JAN	FEB	MAR	APR	MAY	JUN	JUL	AUG	SEP
1	14.23	12.64	7.24	8.28	9.39	11.01	4.45	3.88	4.07	6.18	8.47	7.35
2	14.17	12.57	7.41	8.36	9.39	10.96	4.44	3.72	4.31	6.28	8.54	7.46
3	14.14	12.51	7.49	8.36	9.55	11.09	4.42	3.17	4.51	6.39	8.64	7.54
4	14.11	12.44	7.55	8.25	9.51	11.14	4.36	3.15	4.67	6.52	8.71	7.55
5	14.07	12.40	7.49	8.37	9.68	11.14	4.24	3.24	4.63	6.66	8.79	7.71
6	14.07	12.30	7.48	8.34	9.79	11.25	4.53	3.34	4.63	6.85	8.84	7.80
7	14.05	12.28	7.50	8.29	9.77	11.30	4.83	3.39	4.45	7.00	8.51	7.84
8	14.06	12.24	7.57	8.19	9.85	11.31	4.58	3.51	4.38	7.06	7.22	7.94
9	14.05	12.22	7.76	8.33	9.91	11.33	4.53	3.61	4.42	7.21	6.07	8.02
10	14.06	12.17	7.71	8.43	9.92	11.42	4.60	3.62	4.66	7.27	5.29	8.04
11	14.07	12.13	7.79	8.51	10.03	11.47	4.30	3.70	4.63	7.18	4.53	8.14
12	14.08	12.11	7.77	8.59	10.05	11.50	3.86	3.53	4.85	7.18	4.52	8.22
13	14.08	12.05	7.85	8.53	10.15	11.57	4.11	3.29	4.98	7.26	4.55	8.30
14	14.10	11.96	7.66	8.65	10.23	11.62	4.02	3.24	4.43	7.28	4.67	8.37
15	14.12	11.77	7.83	8.66	10.33	11.65	3.63	3.44	3.65	7.19	4.74	8.44
16	14.10	11.54	7.98	8.70	10.40	11.67	3.73	3.52	3.69	7.16	4.82	8.50
17	14.07	11.20	8.16	8.69	10.40	11.70	4.10	3.57	3.74	7.24	5.24	8.66
18	14.07	10.96	8.19	8.79	10.41	11.77	4.03	3.69	3.83	7.30	5.46	8.72
19	14.02	10.82	8.07	8.74	10.47	11.81	3.99	3.88	4.05	7.38	5.55	8.70
20	13.97	10.63	7.97	8.74	10.53	11.71	3.93	3.96	4.37	7.46	5.67	8.72
21	13.89	10.46	8.04	8.86	10.58	11.55	3.87	4.16	4.51	7.52	5.74	8.79
22	13.80	10.26	8.11	8.88	10.62	11.44	3.94	4.38	4.64	7.60	5.78	8.75
23	13.68	10.02	8.16	8.96	10.59	11.27	3.97	4.41	4.89	7.72	6.02	8.60
24	13.55	9.38	8.24	9.05	10.78	11.07	4.03	4.44	5.12	7.82	6.25	8.56
25	13.41	8.54	8.10	9.09	10.85	10.78	4.05	4.51	5.22	7.94	6.39	8.14
26	13.27	7.95	8.19	9.12	10.89	10.43	3.93	4.62	5.32	7.99	6.49	7.79
27	13.14	7.54	8.30	9.21	10.92	10.0	3.66	4.50	5.49	8.01	6.60	7.47
28	13.04	7.33	8.18	9.22	10.96	9.33	3.51	4.22	5.81	8.13	6.92	7.19
29	12.95	7.13	8.24	9.29	---	7.92	3.67	4.10	5.95	8.24	6.97	7.16
30	12.84	7.08	8.35	9.40	---	5.44	4.03	4.14	6.03	8.35	7.13	7.19
31	12.75	---	8.22	9.42	---	4.43	---	4.11	---	8.42	7.31	---
LOW	14.23	12.64	8.35	9.42	10.96	11.81	4.83	4.62	6.03	8.42	8.84	8.79
HIGH	12.75	7.08	7.24	8.19	9.39	4.43	3.51	3.15	3.65	6.18	4.52	7.16



LOCATION.--Lat 44°08'23", long 70°29'15", Hydrologic Unit 01040002, on State Highway 121, about 0.1 mi east of the intersection with Skeetfield Road, in Oxford. Owner: U.S. Geological Survey.

AQUIFER.--Stratified sand (outwash) of Pleistocene age.

WELL CHARACTERISTICS.--Drilled unconfined observation well, diameter 6 in., Sept. 1980 constructed depth 39 ft, cased with 6-in. steel to 35 ft, screened 35 to 39 ft, screen slot size 0.010 in., November 1982 measured depth 38 ft.

INSTRUMENTATION.--Electronic water-level recorder. Prior to Oct. 1989, daily mean data were published every fifth day.

DATUM.--Elevation of land-surface datum is 334 ft above National Geodetic Vertical Datum of 1929, from topographic map. Measuring point: Top of casing, at land surface datum, which is 1.20 ft above the general land surface.

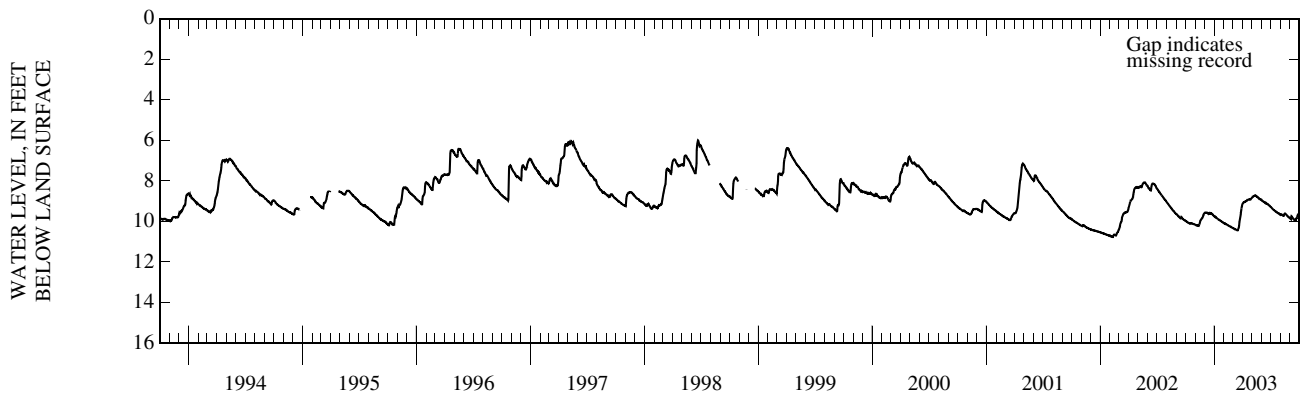
PERIOD OF RECORD.--September 1980 to current year.

REVISED RECORDS.--WDR ME-82-1: 1981.

EXTREMES FOR PERIOD OF RECORD.--Highest water level recorded, 4.07 ft below land-surface datum, June 3, 1984; lowest recorded, 10.77 ft below land-surface datum, Feb. 9-10, 2002.

DEPTH TO WATER LEVEL, FEET BELOW LAND SURFACE
WATER YEAR OCTOBER 2002 TO SEPTEMBER 2003
DAILY MEAN VALUES

DAY	OCT	NOV	DEC	JAN	FEB	MAR	APR	MAY	JUN	JUL	AUG	SEP
1	9.97	10.17	9.58	9.75	10.08	10.33	9.15	8.83	8.94	9.30	9.68	9.85
2	9.99	10.17	9.57	9.77	10.08	10.32	9.11	8.81	8.96	9.31	9.66	9.87
3	10.0	10.18	9.57	9.78	10.11	10.35	9.09	8.80	8.98	9.32	9.65	9.88
4	10.01	10.19	9.56	9.78	10.10	10.35	9.07	8.79	9.00	9.34	9.65	9.81
5	10.02	10.20	9.56	9.80	10.12	10.36	9.05	8.78	9.00	9.35	9.66	9.75
6	10.03	10.19	9.56	9.81	10.13	10.37	9.05	8.76	9.01	9.37	9.68	9.76
7	10.04	10.20	9.56	9.82	10.13	10.38	9.05	8.75	9.03	9.39	9.70	9.78
8	10.05	10.20	9.57	9.82	10.14	10.38	9.03	8.75	9.03	9.40	9.71	9.81
9	10.07	10.20	9.58	9.84	10.15	10.39	9.03	8.74	9.04	9.42	9.72	9.84
10	10.07	10.21	9.58	9.85	10.16	10.40	9.02	8.73	9.06	9.44	9.73	9.86
11	10.08	10.21	9.60	9.87	10.17	10.41	9.01	8.73	9.07	9.44	9.73	9.88
12	10.09	10.21	9.60	9.88	10.17	10.41	8.99	8.72	9.08	9.45	9.68	9.90
13	10.10	10.19	9.62	9.89	10.19	10.42	8.99	8.72	9.10	9.47	9.64	9.91
14	10.10	10.14	9.61	9.90	10.20	10.43	8.98	8.73	9.08	9.48	9.62	9.92
15	10.11	10.08	9.59	9.91	10.21	10.44	8.96	8.76	9.09	9.50	9.61	9.94
16	10.11	10.02	9.59	9.93	10.22	10.44	8.95	8.77	9.12	9.50	9.61	9.92
17	10.10	9.96	9.61	9.93	10.23	10.44	8.95	8.78	9.12	9.51	9.62	9.91
18	10.10	9.93	9.62	9.95	10.23	10.40	8.95	8.78	9.13	9.52	9.64	9.92
19	10.09	9.91	9.63	9.95	10.24	10.35	8.93	8.80	9.13	9.54	9.66	9.93
20	10.09	9.89	9.63	9.96	10.25	10.31	8.93	8.80	9.14	9.55	9.68	9.86
21	10.09	9.87	9.60	9.97	10.26	10.21	8.92	8.82	9.16	9.56	9.69	9.83
22	10.10	9.85	9.59	9.98	10.27	10.04	8.92	8.85	9.16	9.57	9.71	9.83
23	10.11	9.83	9.61	10.0	10.27	9.94	8.91	8.87	9.18	9.59	9.73	9.81
24	10.12	9.80	9.63	10.01	10.29	9.85	8.91	8.88	9.19	9.59	9.75	9.75
25	10.13	9.77	9.63	10.02	10.30	9.76	8.92	8.89	9.20	9.59	9.76	9.70
26	10.13	9.72	9.65	10.03	10.30	9.68	8.92	8.90	9.22	9.60	9.78	9.66
27	10.13	9.68	9.68	10.04	10.31	9.58	8.90	8.90	9.23	9.61	9.79	9.64
28	10.14	9.65	9.69	10.05	10.32	9.46	8.88	8.90	9.25	9.63	9.81	9.62
29	10.15	9.62	9.71	10.06	---	9.35	8.86	8.90	9.27	9.65	9.82	9.62
30	10.16	9.59	9.73	10.07	---	9.27	8.86	8.92	9.28	9.66	9.83	9.62
31	10.16	---	9.74	10.08	---	9.20	---	8.94	---	9.67	9.84	---
LOW	10.16	10.21	9.74	10.08	10.32	10.44	9.15	8.94	9.28	9.67	9.84	9.94
HIGH	9.97	9.59	9.56	9.75	10.08	9.20	8.86	8.72	8.94	9.30	9.61	9.62



PENOBSCOT COUNTY

445319068560101 Local number, PEW 456

LOCATION.--Lat 44°53'19", long 68°56'01", Hydrologic Unit 01020005, on Kenduskeag-Levant Road, 2.5 mi south of Kenduskeag, near Kenduskeag-Levant town line, Kenduskeag. Owner: Clarence W. Parker, Jr.

AQUIFER.--Bedrock of Silurian age.

WELL CHARACTERISTICS.--Drilled artesian observation well, diameter 6 in., depth 101 ft, open hole.

INSTRUMENTATION.--Electronic water-level recorder. Prior to Oct. 1989, daily mean data were published every fifth day.

DATUM.--Elevation of land-surface datum is 190 ft above National Geodetic Vertical Datum of 1929, from topographic map. Measuring point: Top of casing, 2.16 ft below land-surface datum, which is 1.77 ft above the general land surface. Prior to Dec. 10, 1999, Top of casing, 0.37 ft above land-surface datum.

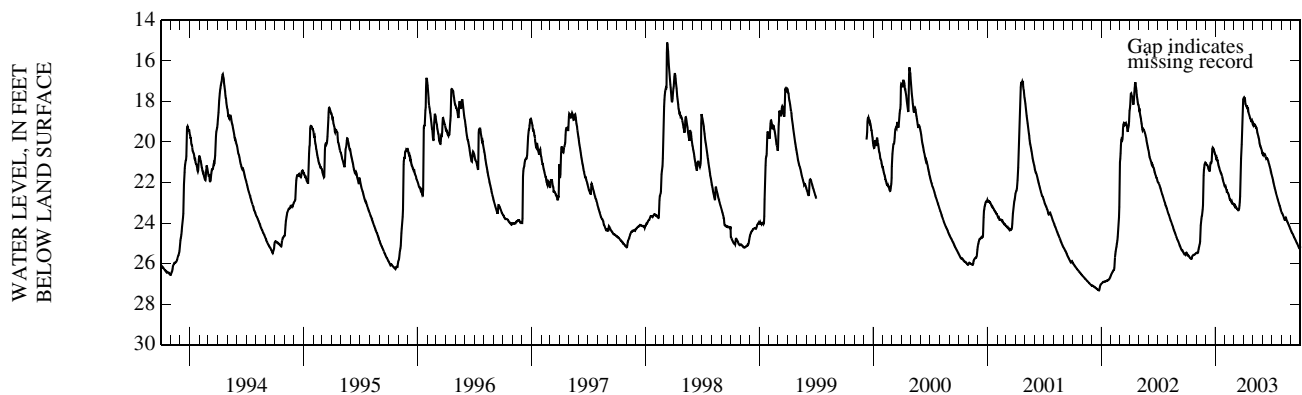
PERIOD OF RECORD.--April 1978 to current year.

REVISED RECORDS.--WDR ME-84-1: 1979, 1980, 1981.

EXTREMES FOR PERIOD OF RECORD.--Highest water level recorded, 14.92 ft below land-surface datum, Apr. 26, 1983; lowest recorded, 27.32 ft (corrected) below land-surface datum, Dec. 24, 2001.

DEPTH TO WATER LEVEL, FEET BELOW LAND SURFACE
WATER YEAR OCTOBER 2002 TO SEPTEMBER 2003
DAILY MEAN VALUES

DAY	OCT	NOV	DEC	JAN	FEB	MAR	APR	MAY	JUN	JUL	AUG	SEP
1	25.47	25.47	21.03	20.63	22.19	23.10	17.87	19.14	20.58	21.66	23.46	24.40
2	25.50	25.47	21.08	20.71	22.17	23.08	17.82	19.16	20.54	21.73	23.50	24.44
3	25.54	25.48	21.09	20.78	22.26	23.11	17.80	19.11	20.56	21.78	23.52	24.48
4	25.57	25.48	21.12	20.75	22.29	23.16	17.83	19.15	20.63	21.85	23.55	24.50
5	25.57	25.48	21.13	20.86	22.33	23.14	17.84	19.20	20.66	21.91	23.58	24.51
6	25.61	25.46	21.14	20.90	22.42	23.18	17.94	19.25	20.60	21.98	23.62	24.54
7	25.61	25.40	21.17	20.91	22.41	23.23	18.11	19.14	20.59	22.06	23.67	24.56
8	25.64	25.31	21.20	20.90	22.45	23.24	18.15	19.15	20.60	22.11	23.71	24.60
9	25.66	25.23	21.31	20.99	22.49	23.23	18.20	19.19	20.62	22.18	23.76	24.66
10	25.69	25.16	21.31	21.08	22.51	23.28	18.25	19.22	20.66	22.26	23.80	24.68
11	25.71	25.09	21.37	21.15	22.54	23.30	18.24	19.29	20.71	22.31	23.84	24.71
12	25.73	25.04	21.39	21.21	22.58	23.30	18.19	19.29	20.77	22.36	23.84	24.75
13	25.74	24.90	21.45	21.24	22.64	23.33	18.33	19.31	20.84	22.44	23.74	24.78
14	25.76	24.48	21.40	21.31	22.70	23.35	18.36	19.39	20.84	22.51	23.72	24.82
15	25.77	24.11	21.16	21.37	22.75	23.36	18.29	19.50	20.77	22.56	23.74	24.85
16	25.77	23.95	21.03	21.42	22.81	23.37	18.38	19.58	20.81	22.61	23.76	24.88
17	25.74	23.80	21.03	21.45	22.83	23.34	18.53	19.62	20.83	22.67	23.82	24.92
18	25.68	23.68	21.04	21.53	22.84	23.28	18.58	19.68	20.86	22.73	23.87	24.96
19	25.65	23.61	21.01	21.55	22.88	23.14	18.63	19.76	20.91	22.79	23.91	24.99
20	25.61	23.47	20.98	21.57	22.91	22.96	18.68	19.83	20.98	22.84	23.94	25.01
21	25.60	23.34	20.68	21.64	22.95	22.68	18.73	19.91	21.03	22.90	23.98	25.05
22	25.58	23.11	20.38	21.68	22.98	21.99	18.80	20.03	21.08	22.95	24.01	25.08
23	25.57	22.33	20.31	21.75	22.94	21.40	18.83	20.11	21.14	23.01	24.05	25.11
24	25.57	21.64	20.33	21.82	23.00	20.79	18.88	20.17	21.21	23.05	24.09	25.14
25	25.57	21.37	20.32	21.88	23.01	20.46	18.94	20.19	21.26	23.10	24.13	25.17
26	25.56	21.27	20.34	21.92	23.04	20.12	19.01	20.26	21.32	23.15	24.16	25.21
27	25.54	21.15	20.44	21.97	23.05	19.70	18.95	20.28	21.38	23.18	24.19	25.24
28	25.52	21.09	20.43	22.02	23.07	19.17	18.93	20.31	21.46	23.23	24.25	25.26
29	25.51	21.05	20.47	22.07	---	18.83	18.99	20.37	21.54	23.30	24.29	25.22
30	25.49	21.01	20.58	22.15	---	18.35	19.11	20.45	21.60	23.36	24.32	25.15
31	25.48	---	20.59	22.18	---	17.92	---	20.53	---	23.42	24.37	---
LOW	25.77	25.48	21.45	22.18	23.07	23.37	19.11	20.53	21.60	23.42	24.37	25.26
HIGH	25.47	21.01	20.31	20.63	22.17	17.92	17.80	19.11	20.54	21.66	23.46	24.40



GROUND-WATER RECORDS
 PENOBSCOT COUNTY—Continued
 445319068560101 Local number, PEW 456—Continued

PERIOD OF RECORD.--CHEMICAL ANALYSES: September 2003.

WATER-QUALITY DATA, WATER YEAR OCTOBER 2002 TO SEPTEMBER 2003

Date	Time	Depth to water level, feet below LSD (72019)	Flow rate of well, gal/min (00058)	Pump or flow period prior to sampling, minutes (72004)	Barometric pressure, mm Hg (00025)	Dissolved oxygen, mg/L (00300)	Dissolved oxygen, percent of saturation (00301)	pH, water, unfltrd field, std units (00400)	pH, water, unfltrd lab, std units (00403)	Specif. conductance, wat unfltrd lab, uS/cm 25 degC (90095)	Specif. conductance, wat unfltrd lab, uS/cm 25 degC (00095)	Temperature, deg C (00010)	Hardness, water, unfltrd mg/L as CaCO3 (00900)	
SEP 09...	1400	24.64	1.1	130	765	7.8	66	7.1	6.9	119	116	8.2	42	
		Calcium water, fltrd, mg/L (00915)	Magnesium, water, fltrd, mg/L (00925)	Potassium, water, fltrd, mg/L (00935)	Sodium, water, fltrd, mg/L (00930)	Alkalinity, wat flt fxd end lab, mg/L as CaCO3 (29801)	Bromide water, fltrd, mg/L (71870)	Chloride, water, fltrd, mg/L (00940)	Fluoride, water, fltrd, mg/L (00950)	Silica, water, fltrd, mg/L (00955)	Sulfate water, fltrd, mg/L (00945)	Residue sum of constituents mg/L (70301)	Nitrite + nitrate water, fltrd, mg/L as N (00631)	
SEP 09...	12.2	2.89	1.59	7.74	49	<.02	1.39	<.2	14.0	8.8	79	<.04	.18	
		Nitrite water, fltrd, mg/L as N (00613)	Orthophosphate, water, fltrd, mg/L as P (00671)	Aluminum, water, fltrd, ug/L (01106)	Antimony, water, fltrd, ug/L (01095)	Total Arsenic water, fltrd, ug/L (01000)	Cadmium water, fltrd, ug/L (01025)	Chromium, water, fltrd, ug/L (01030)	Copper, water, fltrd, ug/L (01040)	Iron, water, fltrd, ug/L (01046)	Lead, water, fltrd, ug/L (01049)	Manganese, water, fltrd, ug/L (01056)	Nickel, water, fltrd, ug/L (01065)	Silver, water, fltrd, ug/L (01075)
SEP 09...		<.008	E.01	<2	<.30	E.2	E.03	E.7	E.1	13	<.08	9.5	.90	<.2
		Zinc, water, fltrd, ug/L (01090)	Uranium natural water, fltrd, ug/L (22703)											
SEP 09...	M		.13											

Remark codes used in this report:

< -- Less than
 E -- Estimated value
 M -- Presence verified, not quantified
 mg/L -- milligrams per liter
 ug/L -- micrograms per liter

PENOBSCOT COUNTY—Continued

453629068531801 Local number, PEW 594

LOCATION.--Lat 45°36'29", long 68°53'18", Hydrologic Unit 01020001, on abandoned dirt road, about 8.0 miles southwest of Millinocket, about 0.4 miles south of South Twin Lake and east of Sandy Brook, T4 Indian Purchase. Owner: U.S. Geological Survey.

AQUIFER.--Glacial sand and gravel (ice-contact deposits) of Pleistocene age.

WELL CHARACTERISTICS.--Wash-bored unconfined observation well, diameter 2 in., depth 30.5 ft., screened depth 10.5 to 30.5 ft, screen slot size 0.008 in.

INSTRUMENTATION.--Electronic water-level recorder.

DATUM.--Elevation of land-surface datum is 520 ft above National Geodetic Vertical Datum of 1929, from topographic map. Measuring point: Top of casing, 1.00 ft above land-surface datum. Prior to Sept. 17, 2003, top of casing, 3.50 ft above land-surface datum.

REMARKS.--Missing record, Dec. 14 to May 27.

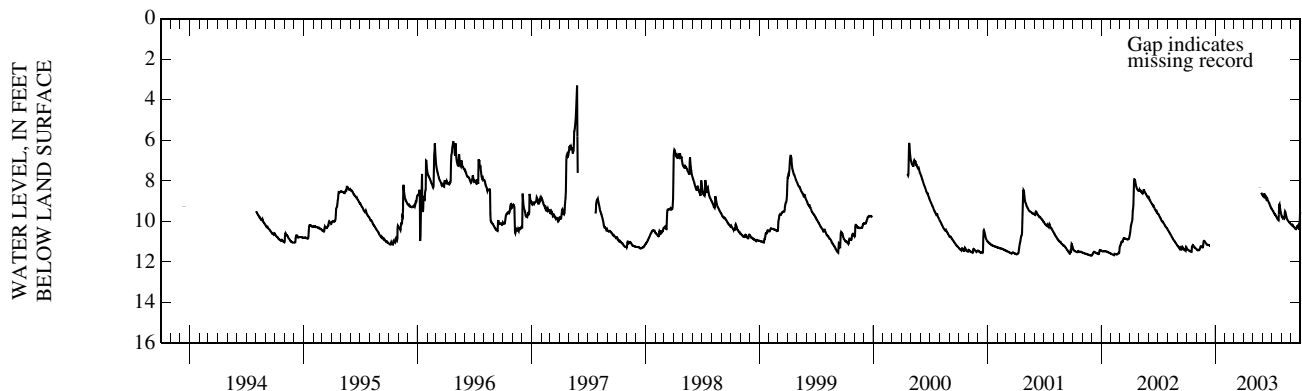
PERIOD OF RECORD.-- August 1994 to current year.

EXTREMES FOR PERIOD OF RECORD.--Highest water level recorded, 3.30 ft below land-surface datum, May 26, 1997; lowest recorded, 11.69 ft below land-surface datum, Nov. 30, 2001.

DEPTH TO WATER LEVEL, FEET BELOW LAND SURFACE
WATER YEAR OCTOBER 2002 TO SEPTEMBER 2003
DAILY MEAN VALUES

DAY	OCT	NOV	DEC	JAN	FEB	MAR	APR	MAY	JUN	JUL	AUG	SEP
1	11.30	11.37	11.06	---	---	---	---	---	8.70	9.39	9.70	10.16
2	11.34	11.38	11.09	---	---	---	---	---	8.70	9.42	9.75	10.18
3	11.37	11.40	11.11	---	---	---	---	---	8.74	9.46	9.79	10.20
4	11.39	11.41	11.13	---	---	---	---	---	8.78	9.48	9.82	10.18
5	11.40	11.42	11.15	---	---	---	---	---	8.79	9.48	9.78	10.16
6	11.41	11.42	11.16	---	---	---	---	---	8.64	9.52	9.79	10.19
7	11.42	11.40	11.16	---	---	---	---	---	8.64	9.55	9.82	10.22
8	11.44	11.40	11.16	---	---	---	---	---	8.68	9.58	9.84	10.25
9	11.45	11.41	11.16	---	---	---	---	---	8.73	9.61	9.87	10.27
10	11.46	11.42	11.17	---	---	---	---	---	8.78	9.65	9.84	10.28
11	11.47	11.40	11.17	---	---	---	---	---	8.82	9.66	9.58	10.30
12	11.48	11.38	11.17	---	---	---	---	---	8.86	9.65	9.50	10.32
13	11.48	11.33	m11.17	---	---	---	---	---	8.90	9.69	9.54	10.34
14	11.48	11.26	---	---	---	---	---	---	8.87	9.73	9.61	10.36
15	11.49	11.23	---	---	---	---	---	---	8.84	9.76	9.67	10.37
16	11.49	11.23	---	---	---	---	---	---	8.86	9.79	9.72	10.38
17	11.38	11.23	---	---	---	---	---	---	8.90	9.81	9.79	10.35
18	11.25	11.24	---	---	---	---	---	---	8.94	9.84	9.84	10.29
19	11.23	11.26	---	---	---	---	---	---	8.97	9.87	9.88	10.25
20	11.19	11.27	---	---	---	---	---	---	9.02	9.90	9.92	10.23
21	11.16	11.28	---	---	---	---	---	m8.31	9.05	9.93	9.95	10.24
22	11.18	11.26	---	---	---	---	---	---	9.09	9.94	9.97	10.21
23	11.21	11.11	---	---	---	---	---	---	9.12	9.67	10.0	10.19
24	11.24	10.99	---	---	---	---	---	---	9.16	9.19	10.02	10.34
25	11.26	10.96	---	---	---	---	---	---	9.20	9.16	10.04	10.36
26	11.29	10.96	---	---	---	---	---	---	9.24	9.24	10.06	10.36
27	11.30	10.97	---	---	---	---	---	---	9.28	9.31	10.06	10.38
28	11.30	10.99	---	---	---	---	---	m8.58	9.32	9.41	10.09	10.31
29	11.32	11.01	---	---	---	---	---	8.61	9.35	9.50	10.11	9.66
30	11.34	11.03	---	---	---	---	---	8.64	9.37	9.59	10.12	9.53
31	11.35	---	---	---	---	---	---	8.68	---	9.65	10.14	---
LOW	11.49	11.42	---	---	---	---	---	---	9.37	9.94	10.14	10.38
HIGH	11.16	10.96	---	---	---	---	---	---	8.64	9.16	9.50	9.53

m Measured



SOMERSET COUNTY

445148069513301 Local number, SMW 61

LOCATION.--Lat 44°51'48", long 69°51'33", Hydrologic Unit 01030003, approximately 3.0 mi northeast of Madison. Owner: U.S. Geological Survey.

AQUIFER.--Glaciomarine sand and silt of Pleistocene age.

WELL CHARACTERISTICS.--Wash-bored unconfined observation well, diameter 2 in, Sept. 1984 measured depth 40 ft, screened depth 35 to 40 ft, screen slot size 0.010 in.

INSTRUMENTATION.--Electronic water-level recorder. Prior to Dec. 1999, monthly measurements were published.

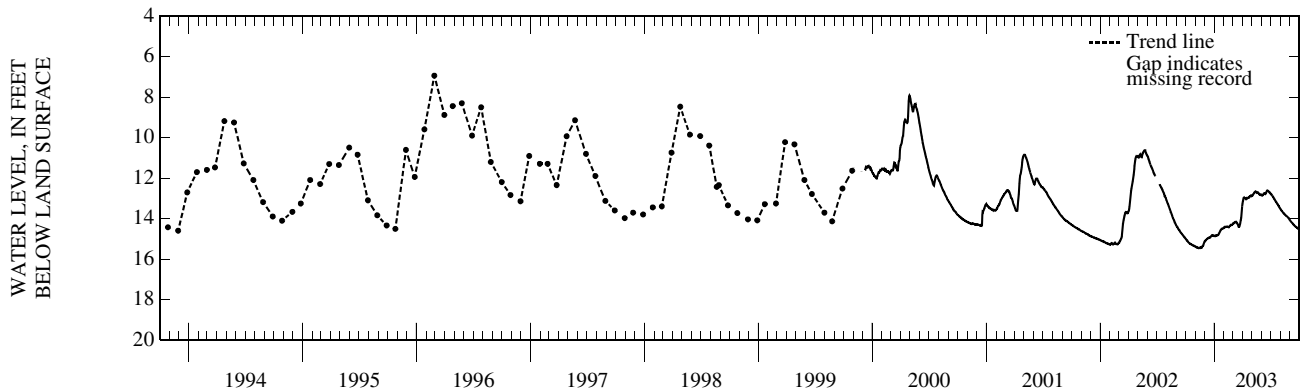
DATUM.--Elevation of land-surface datum is 280 ft above National Geodetic Vertical Datum of 1929, from topographic map. Measuring point: Top of casing, 0.72 ft above land-surface datum. Prior to Dec. 1999, Top of casing, 3.50 ft above land-surface datum.

PERIOD OF RECORD.--January 1985 to November 1985, October 1987 to current year.

EXTREMES FOR PERIOD OF RECORD.--Highest water level measured, 6.94 ft below land-surface datum, Feb. 27, 1996; lowest measured, 15.45 ft below land-surface datum, Nov. 12, 2002.

DEPTH TO WATER LEVEL, FEET BELOW LAND SURFACE
WATER YEAR OCTOBER 2002 TO SEPTEMBER 2003
DAILY MEAN VALUES

DAY	OCT	NOV	DEC	JAN	FEB	MAR	APR	MAY	JUN	JUL	AUG	SEP
1	14.98	15.37	15.12	14.85	14.44	14.26	13.27	12.88	12.82	12.78	13.53	14.10
2	15.01	15.38	15.11	14.85	14.42	14.23	13.16	12.87	12.83	12.80	13.55	14.12
3	15.03	15.39	15.08	14.86	14.41	14.22	13.09	12.86	12.83	12.81	13.57	14.14
4	15.05	15.41	15.07	14.85	14.40	14.22	13.02	12.82	12.85	12.83	13.59	14.15
5	15.06	15.42	15.06	14.84	14.40	14.20	12.96	12.80	12.83	12.85	13.61	14.16
6	15.10	15.41	15.03	14.83	14.41	14.19	12.96	12.78	12.82	12.87	13.63	14.19
7	15.11	15.42	15.01	14.83	14.41	14.19	12.97	12.76	12.80	12.90	13.66	14.20
8	15.13	15.43	14.99	14.81	14.40	14.17	12.97	12.74	12.76	12.92	13.68	14.22
9	15.15	15.44	14.99	14.81	14.40	14.16	12.98	12.72	12.74	12.94	13.70	14.24
10	15.17	15.44	14.97	14.81	14.39	14.17	13.00	12.69	12.75	12.97	13.72	14.26
11	15.18	15.44	14.97	14.82	14.40	14.17	13.01	12.68	12.76	13.00	13.74	14.27
12	15.20	15.45	14.96	14.81	14.39	14.16	12.99	12.66	12.76	13.01	13.74	14.29
13	15.21	15.44	14.95	14.80	14.40	14.18	13.04	12.65	12.78	13.05	13.76	14.31
14	15.22	15.43	14.93	14.78	14.41	14.20	13.03	12.67	12.76	13.08	13.78	14.33
15	15.24	15.43	14.92	14.76	14.41	14.23	13.00	12.70	12.75	13.11	13.80	14.34
16	15.25	15.44	14.91	14.72	14.42	14.25	12.98	12.71	12.74	13.13	13.81	14.35
17	15.25	15.43	14.93	14.69	14.40	14.28	12.98	12.70	12.69	13.15	13.82	14.37
18	15.26	15.41	14.93	14.66	14.38	14.32	12.97	12.69	12.63	13.18	13.84	14.39
19	15.27	15.44	14.92	14.62	14.37	14.37	12.97	12.70	12.61	13.20	13.86	14.41
20	15.27	15.43	14.89	14.59	14.35	14.40	12.97	12.70	12.62	13.23	13.87	14.41
21	15.28	15.43	14.87	14.57	14.34	14.40	12.96	12.70	12.62	13.25	13.88	14.43
22	15.30	15.41	14.85	14.54	14.33	14.38	12.96	12.74	12.62	13.27	13.89	14.45
23	15.31	15.37	14.83	14.52	14.30	14.33	12.95	12.76	12.63	13.30	13.90	14.45
24	15.31	15.36	14.83	14.51	14.31	14.27	12.91	12.77	12.66	13.32	13.92	14.46
25	15.33	15.35	14.82	14.51	14.31	14.18	12.88	12.78	12.68	13.35	13.94	14.48
26	15.33	15.32	14.81	14.49	14.31	14.08	12.88	12.81	12.69	13.38	13.95	14.49
27	15.33	15.28	14.83	14.48	14.29	14.05	12.87	12.82	12.70	13.39	13.96	14.50
28	15.34	15.24	14.83	14.48	14.27	13.96	12.87	12.81	12.73	13.41	14.00	14.51
29	15.35	15.20	14.83	14.47	---	13.78	12.87	12.81	12.75	13.45	14.02	14.50
30	15.36	15.15	14.85	14.47	---	13.58	12.89	12.83	12.76	13.48	14.04	14.51
31	15.36	---	14.85	14.46	---	13.38	---	12.84	---	13.51	14.08	---
LOW	15.36	15.45	15.12	14.86	14.44	14.40	13.27	12.88	12.85	13.51	14.08	14.51
HIGH	14.98	15.15	14.81	14.46	14.27	13.38	12.87	12.65	12.61	12.78	13.53	14.10



WALDO COUNTY

442822069081301 Local number, WOW 85

LOCATION.--Lat 44°28'22", long 69°08'13", Hydrologic Unit 01050002, about 2.25 mi northeast of Morrill. Owner: U.S. Geological Survey.

AQUIFER.--Glacial till of Pleistocene age.

WELL CHARACTERISTICS.--Wash-bored unconfined observation well, diameter 2 in., depth 27 ft; screened depth 17 to 22 ft, screen slot size 0.008 in; screened depth 22 to 27 ft, screen slot size 0.006 in.

INSTRUMENTATION.--Electronic water-level recorder.

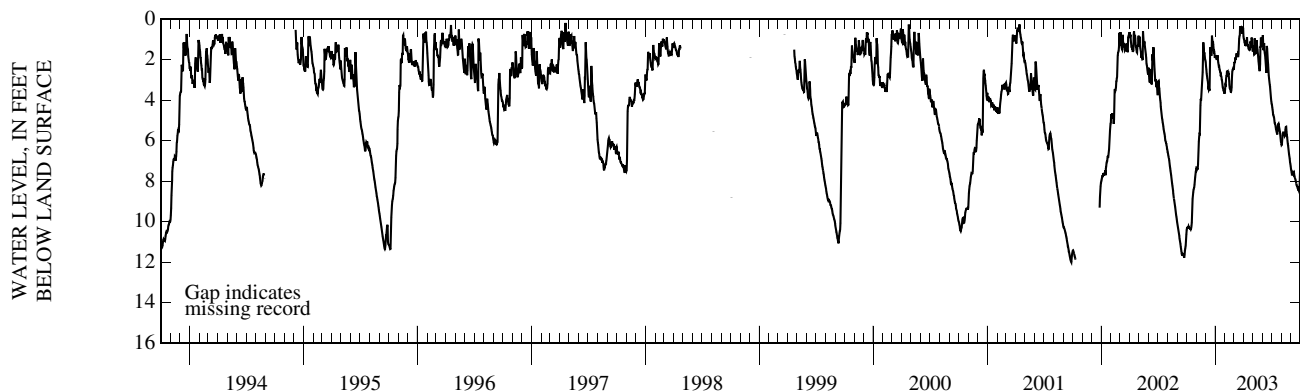
DATUM.--Elevation of land-surface datum is 334 ft above National Geodetic Vertical Datum of 1929, from topographic map. Measuring point: Top of casing, 3.06 ft above land-surface datum.

PERIOD OF RECORD.--November 1989 to current year.

EXTREMES FOR PERIOD OF RECORD.--Highest water level measured, 0.05 ft below land-surface datum, Nov. 20, 1990; lowest recorded, 11.99 ft below land-surface datum, Sept. 26, 2001.

DEPTH TO WATER LEVEL, FEET BELOW LAND SURFACE
WATER YEAR OCTOBER 2002 TO SEPTEMBER 2003
DAILY MEAN VALUES

DAY	OCT	NOV	DEC	JAN	FEB	MAR	APR	MAY	JUN	JUL	AUG	SEP
1	10.42	7.33	2.12	1.87	3.49	2.49	0.86	1.59	1.09	4.24	6.21	7.46
2	10.31	7.34	2.34	1.86	3.24	2.23	0.96	1.48	0.79	4.36	6.19	7.58
3	10.31	7.42	2.49	1.91	3.25	2.12	1.01	1.29	1.23	4.48	5.96	7.68
4	10.30	7.38	2.69	1.80	2.96	2.17	1.14	1.57	1.54	4.60	5.75	7.72
5	10.22	7.38	2.81	2.02	2.81	2.02	1.17	1.75	1.40	4.71	5.65	7.67
6	10.29	7.15	2.93	1.95	2.78	1.89	1.28	1.74	1.18	4.73	5.60	7.58
7	10.23	6.90	3.02	1.88	2.55	2.01	1.28	0.95	1.54	4.81	5.61	7.49
8	10.27	6.38	3.12	1.78	2.64	1.92	1.09	1.22	1.69	4.85	5.62	7.55
9	10.30	6.05	3.35	1.97	2.66	1.72	1.08	1.40	1.78	4.99	5.67	7.64
10	10.30	5.82	3.33	2.13	2.63	1.73	1.13	1.53	1.96	5.13	5.69	7.61
11	10.33	5.67	3.50	2.23	2.72	1.82	1.12	1.73	2.19	5.16	5.77	7.73
12	10.35	5.68	3.47	2.33	2.70	1.80	0.90	1.18	2.42	5.21	5.74	7.80
13	10.35	5.11	3.53	2.33	2.90	1.75	1.21	1.04	2.65	5.32	5.47	7.85
14	10.38	4.27	2.92	2.47	3.07	1.83	1.33	1.21	1.84	5.43	5.35	7.90
15	10.33	3.94	1.48	2.51	3.24	1.88	1.24	1.42	1.32	5.48	5.33	7.95
16	10.21	4.02	1.39	2.59	3.41	1.72	1.31	1.53	1.47	5.56	5.32	8.01
17	10.04	3.72	1.53	2.63	3.42	1.31	1.45	1.70	1.75	5.62	5.55	8.12
18	9.66	3.43	1.71	2.82	3.44	0.97	1.48	1.87	2.03	5.69	5.71	8.20
19	9.19	3.17	1.81	2.77	3.58	0.86	1.46	2.09	2.23	5.48	5.84	8.22
20	8.87	2.93	1.67	2.82	3.59	0.81	1.48	2.23	2.52	5.26	6.01	8.25
21	8.70	2.62	0.82	2.99	3.53	0.35	1.52	2.42	2.78	5.18	6.15	8.33
22	8.55	1.89	1.02	3.04	3.36	0.46	1.50	2.53	2.94	5.16	6.25	8.36
23	8.43	1.15	1.17	3.20	2.88	0.44	1.13	2.57	3.08	5.25	6.42	8.35
24	8.37	1.42	1.29	3.34	2.60	0.58	1.13	2.21	3.22	5.35	6.56	8.43
25	8.31	1.64	1.26	3.42	2.50	0.59	1.22	1.36	3.34	5.44	6.69	8.44
26	8.17	1.67	1.43	3.44	2.48	0.60	1.40	1.40	3.51	5.52	6.79	8.49
27	7.99	1.65	1.61	3.50	2.42	0.57	0.91	0.91	3.69	5.57	6.89	8.43
28	7.80	1.80	1.59	3.49	2.44	0.73	1.03	1.12	3.92	5.74	7.06	8.22
29	7.66	1.98	1.72	3.56	---	0.59	1.27	1.23	4.07	5.91	7.15	7.64
30	7.52	2.04	1.92	3.69	---	0.37	1.55	1.34	4.17	6.05	7.26	7.07
31	7.45	---	1.87	3.61	---	0.47	---	1.03	---	6.14	7.39	---
LOW	10.42	7.42	3.53	3.69	3.59	2.49	1.55	2.57	4.17	6.14	7.39	8.49
HIGH	7.45	1.15	0.82	1.78	2.42	0.35	0.86	0.91	0.79	4.24	5.32	7.07



GROUND-WATER RECORDS

WASHINGTON COUNTY

450713067162801 Local number, WW 796

LOCATION.--Lat 45°07'13", long 67°16'28", Hydrologic Unit 01050001, in Calais, on Charlotte Road, about 2.25 mi south of U.S. Highway 1. Owner: U.S. Government (Moosehorn National Wildlife Refuge).

AQUIFER.--Bedrock of Devonian age.

WELL CHARACTERISTICS.--Drilled artesian observation well, diameter 6 in., Sept. 1967 reported depth 150 ft, cased with steel to 21 ft, open hole, Nov. 1982 measured depth 146 ft.

INSTRUMENTATION.--Electronic water-level recorder. Prior to Dec. 1999, monthly measurements were published.

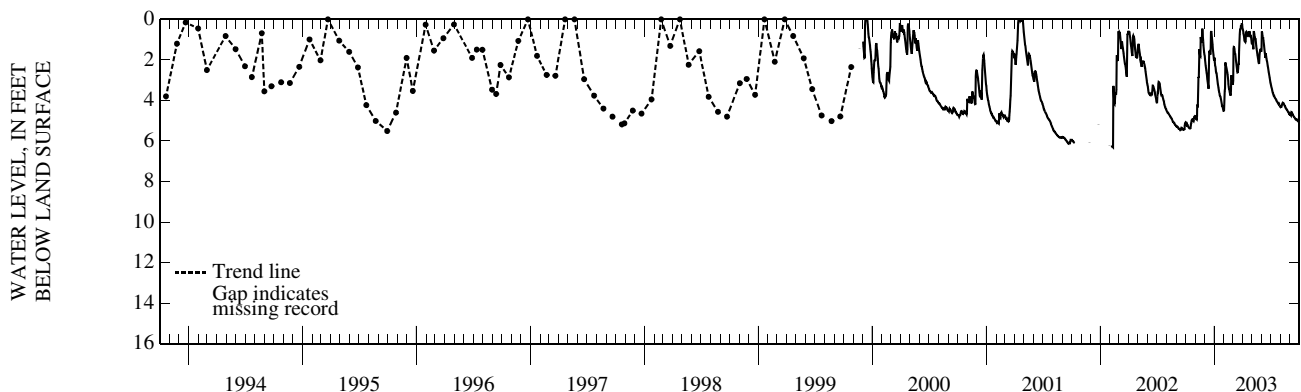
DATUM.--Elevation of land-surface datum is 130 ft above National Geodetic Vertical Datum of 1929, from topographic map. Measuring point: Top of casing, at land-surface datum, which is 0.80 ft above the general land surface.

PERIOD OF RECORD.--September 1980 to current year.

EXTREMES FOR PERIOD OF RECORD.--Highest water level, overflowed in 1981, 1982, 1983, 1984, 1997, 1998, 1999, 2000, and 2001; lowest recorded, 6.31 ft below land-surface datum, Feb. 6 and 10, 2002.

DEPTH TO WATER LEVEL, FEET BELOW LAND SURFACE
WATER YEAR OCTOBER 2002 TO SEPTEMBER 2003
DAILY MEAN VALUES

DAY	OCT	NOV	DEC	JAN	FEB	MAR	APR	MAY	JUN	JUL	AUG	SEP
1	5.07	4.80	1.78	1.88	4.48	3.23	0.44	1.23	1.50	3.23	4.33	4.69
2	5.09	4.83	1.99	2.10	3.95	3.03	0.51	1.19	0.59	3.31	4.32	4.72
3	5.14	4.91	2.13	2.26	3.54	1.45	0.55	1.11	0.64	3.36	4.31	4.74
4	5.19	4.92	2.29	2.32	3.41	1.36	0.68	1.24	0.81	3.42	4.31	4.68
5	5.17	4.94	2.41	2.46	2.13	1.37	0.76	1.38	0.94	3.47	4.26	4.58
6	5.23	4.76	2.52	2.56	2.24	1.43	0.86	1.47	0.87	3.54	4.19	4.58
7	5.22	4.24	2.64	2.62	2.28	1.60	1.02	0.62	1.04	3.62	4.13	4.60
8	5.25	4.24	2.75	2.65	2.37	1.69	1.08	0.62	1.17	3.65	4.11	4.65
9	5.29	4.25	2.94	2.79	2.45	1.70	1.08	0.73	1.30	3.68	4.13	4.70
10	5.32	3.62	3.04	2.94	2.53	1.85	1.11	0.86	1.45	3.76	4.14	4.71
11	5.34	2.84	3.18	3.06	2.62	2.02	1.03	0.99	1.61	3.77	4.15	4.76
12	5.36	2.89	3.28	3.19	2.72	2.12	0.64	0.94	1.75	3.78	4.21	4.79
13	5.37	2.13	3.42	3.28	2.87	2.28	0.61	0.97	1.90	3.83	4.23	4.81
14	5.36	1.47	2.75	3.38	3.03	2.40	0.66	1.13	1.77	3.87	4.25	4.83
15	5.38	1.67	1.58	3.49	3.19	2.54	0.65	1.30	1.67	3.90	4.28	4.85
16	5.37	1.82	1.57	3.58	3.34	2.62	0.68	1.44	1.83	3.92	4.29	4.87
17	5.26	1.83	1.58	3.64	3.44	2.61	0.76	1.55	1.94	3.94	4.34	4.90
18	5.17	0.87	1.66	3.75	3.47	2.44	0.81	1.66	2.02	3.97	4.38	4.93
19	5.10	0.99	1.74	3.78	3.58	2.19	0.83	1.77	2.09	4.01	4.40	4.94
20	5.00	1.09	1.61	3.81	3.65	2.25	0.81	1.87	2.19	4.04	4.43	4.94
21	4.95	1.16	0.64	3.88	3.71	1.52	0.80	1.97	2.30	4.07	4.46	4.95
22	4.93	0.85	0.58	3.96	3.76	1.16	0.77	2.08	2.39	4.09	4.46	4.97
23	4.94	0.46	0.72	4.06	3.53	0.72	0.58	2.15	2.49	4.11	4.49	4.96
24	4.97	0.67	0.89	4.14	2.76	0.51	0.65	2.19	2.60	4.14	4.53	4.98
25	5.01	0.92	1.06	4.24	2.83	0.47	0.75	1.84	2.69	4.15	4.56	4.99
26	5.02	1.11	1.23	4.27	2.96	0.45	0.88	1.71	2.78	4.17	4.58	5.01
27	4.90	1.27	1.48	4.30	3.04	0.35	0.77	1.59	2.88	4.15	4.59	5.03
28	4.82	1.45	1.62	4.35	3.13	0.35	0.82	1.56	2.99	4.18	4.65	4.98
29	4.79	1.62	1.76	4.42	---	0.35	0.95	1.46	3.09	4.23	4.68	4.88
30	4.78	1.73	1.95	4.50	---	0.18	1.12	1.51	3.16	4.28	4.66	4.89
31	4.79	---	2.04	4.51	---	0.25	---	1.60	---	4.31	4.69	---
LOW	5.38	4.94	3.42	4.51	4.48	3.23	1.12	2.19	3.16	4.31	4.69	5.03
HIGH	4.78	0.46	0.58	1.88	2.13	0.18	0.44	0.62	0.59	3.23	4.11	4.58



WASHINGTON COUNTY—Continued

445227067520101 Local number, WW 797

LOCATION.--Lat 44°52'27", long 67°52'01", Hydrologic Unit 01050002, about 0.35 mi south of State Highway 9 in Township T24MD, Hadley Lakes. Owner: U.S. Geological Survey.

AQUIFER.--Glacial sand and gravel of Pleistocene age.

WELL CHARACTERISTICS.--A wash-bored unconfined observation well, diameter 2 in., Sept. 1985 measured depth 30 ft, screened depth 25 to 30 ft, screen slot size 0.008 in.

INSTRUMENTATION.--Electronic water-level recorder. Prior to Oct. 1989, daily mean data were published every fifth day.

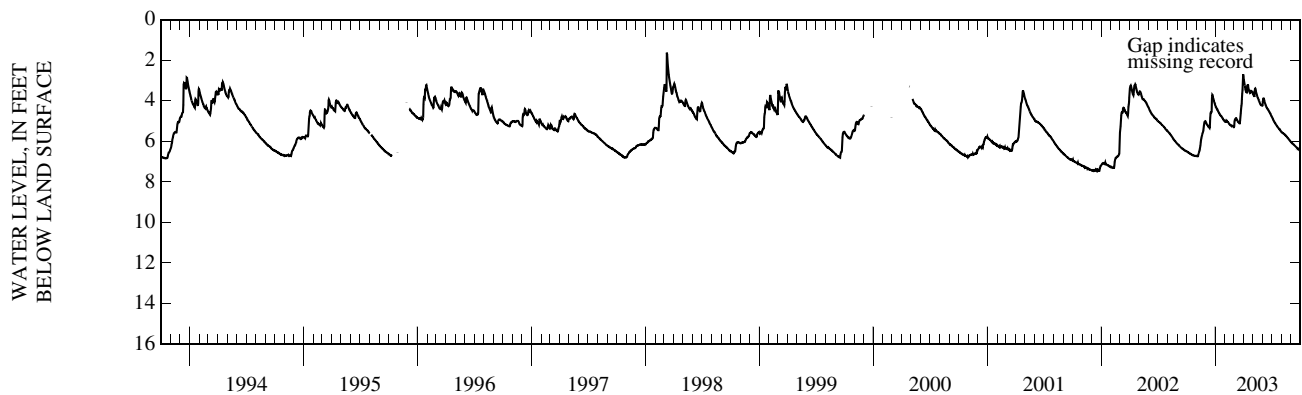
DATUM.--Elevation of land-surface datum is 250 ft above National Geodetic Vertical Datum of 1929, from topographic map. Measuring point: V-notch on top of casing, north side of shelter, which is 3.42 ft above land-surface datum.

PERIOD OF RECORD.--September 1985 to current year. Records prior to October 1985 have not been published, but are available in the files of the U.S. Geological Survey.

EXTREMES FOR PERIOD OF RECORD.--Highest water level recorded, 1.63 ft below land-surface datum, Mar. 10, 1998; lowest recorded, 7.46 ft below land-surface datum, Dec. 16, 19, 21-23, 2001 (corrected).

DEPTH TO WATER LEVEL, FEET BELOW LAND SURFACE
WATER YEAR OCTOBER 2002 TO SEPTEMBER 2003
DAILY MEAN VALUES

DAY	OCT	NOV	DEC	JAN	FEB	MAR	APR	MAY	JUN	JUL	AUG	SEP
1	6.49	6.73	5.02	4.23	5.02	5.29	2.81	3.65	4.23	4.80	5.55	6.05
2	6.50	6.72	5.08	4.28	5.00	5.27	2.95	3.67	4.05	4.83	5.56	6.07
3	6.51	6.73	5.11	4.32	5.04	5.01	3.06	3.71	3.91	4.86	5.57	6.09
4	6.53	6.73	5.15	4.34	5.04	4.95	3.15	3.75	3.89	4.89	5.58	6.09
5	6.53	6.74	5.17	4.38	4.99	4.92	3.24	3.78	3.89	4.92	5.59	6.10
6	6.55	6.72	5.19	4.41	5.01	4.88	3.32	3.80	3.93	4.95	5.60	6.12
7	6.55	6.69	5.21	4.43	5.00	4.87	3.42	3.55	4.02	4.98	5.62	6.13
8	6.57	6.64	5.23	4.44	5.02	4.86	3.50	3.40	4.07	5.01	5.63	6.14
9	6.58	6.58	5.26	4.48	5.05	4.85	3.56	3.39	4.11	5.03	5.64	6.16
10	6.59	6.53	5.28	4.51	5.06	4.90	3.58	3.44	4.16	5.07	5.65	6.17
11	6.60	6.47	5.30	4.55	5.07	4.93	3.58	3.53	4.20	5.09	5.67	6.19
12	6.61	6.39	5.31	4.58	5.08	4.95	3.38	3.59	4.24	5.11	5.68	6.21
13	6.62	6.30	5.33	4.60	5.11	4.99	3.25	3.64	4.29	5.14	5.70	6.22
14	6.63	6.20	5.26	4.63	5.13	5.02	3.23	3.70	4.32	5.17	5.71	6.24
15	6.64	6.05	4.85	4.66	5.15	5.04	3.22	3.76	4.34	5.20	5.73	6.26
16	6.65	5.92	4.65	4.69	5.17	5.06	3.26	3.82	4.37	5.22	5.74	6.27
17	6.66	5.83	4.60	4.71	5.19	5.07	3.38	3.85	4.39	5.24	5.76	6.28
18	6.67	5.77	4.59	4.74	5.19	5.09	3.46	3.89	4.41	5.26	5.78	6.30
19	6.67	5.72	4.58	4.75	5.21	5.11	3.50	3.93	4.43	5.28	5.80	6.32
20	6.68	5.65	4.55	4.76	5.22	5.11	3.54	3.97	4.46	5.31	5.81	6.33
21	6.69	5.60	3.87	4.79	5.23	4.97	3.57	4.00	4.49	5.33	5.83	6.34
22	6.69	5.55	3.70	4.81	5.25	4.77	3.61	4.05	4.51	5.35	5.85	6.36
23	6.70	5.47	3.73	4.84	5.23	4.62	3.60	4.09	4.54	5.37	5.87	6.37
24	6.70	5.34	3.81	4.86	5.23	4.41	3.51	4.13	4.58	5.38	5.89	6.38
25	6.71	5.21	3.87	4.89	5.24	4.26	3.50	4.16	4.60	5.40	5.91	6.40
26	6.71	5.12	3.92	4.91	5.26	4.15	3.54	4.19	4.63	5.42	5.93	6.41
27	6.71	5.06	4.00	4.93	5.27	3.93	3.55	4.21	4.66	5.43	5.95	6.42
28	6.72	5.03	4.05	4.95	5.28	3.65	3.55	4.21	4.70	5.45	5.97	6.43
29	6.72	5.01	4.09	4.97	---	3.48	3.55	4.21	4.74	5.48	6.00	6.43
30	6.72	5.00	4.16	5.00	---	3.06	3.62	4.22	4.76	5.50	6.01	6.45
31	6.73	---	4.20	5.02	---	2.69	---	4.24	---	5.53	6.03	---
LOW	6.73	6.74	5.33	5.02	5.28	5.29	3.62	4.24	4.76	5.53	6.03	6.45
HIGH	6.49	5.00	3.70	4.23	4.99	2.69	2.81	3.39	3.89	4.80	5.55	6.05



YORK COUNTY

432310070393301 Local number, YW 807

LOCATION.--Lat 43°23'10", long 70°39'33", Hydrologic Unit 01060003, about 4.5 mi southeast of South Sanford. Owner: U.S. Geological Survey.

AQUIFER.--Ice-contact glaciofluvial deposits of Pleistocene age.

WELL CHARACTERISTICS.--Wash-bored unconfined observation well, diameter 2 in., measured depth 39 ft, screened depth 34 to 39 feet, screen slot size 0.010 in.

INSTRUMENTATION.--Electronic water-level recorder. Prior to Oct. 1989, daily mean data were published every fifth day.

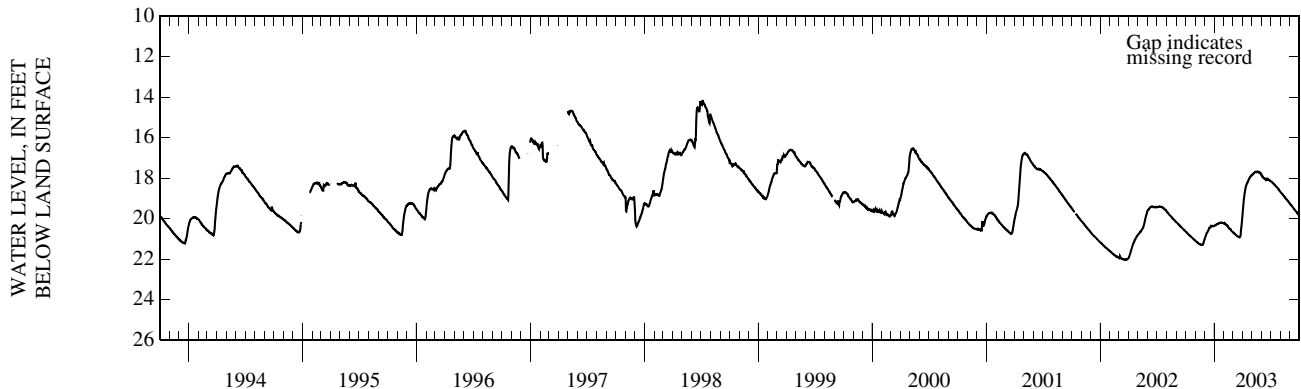
DATUM.--Elevation of land-surface datum is 202 ft above National Geodetic Vertical Datum of 1929, from topographic map. Measuring point: Top of casing, 2.90 ft above land-surface datum.

PERIOD OF RECORD.--July 1988 to current year.

EXTREMES FOR PERIOD OF RECORD.--Highest water level recorded, 14.18 ft below land-surface datum, July 5 and 6, 1998; lowest recorded, 22.02 ft below land-surface datum, Mar. 21-25, 2002.

DEPTH TO WATER LEVEL, FEET BELOW LAND SURFACE
WATER YEAR OCTOBER 2002 TO SEPTEMBER 2003
DAILY MEAN VALUES

DAY	OCT	NOV	DEC	JAN	FEB	MAR	APR	MAY	JUN	JUL	AUG	SEP
1	20.63	21.08	21.00	20.35	20.22	20.66	19.87	17.84	17.81	18.16	18.68	19.28
2	20.65	21.10	20.95	20.34	20.21	20.66	19.67	17.82	17.87	18.16	18.70	19.30
3	20.66	21.12	20.91	20.33	20.24	20.69	19.46	17.82	17.91	18.17	18.72	19.32
4	20.68	21.13	20.86	20.32	20.23	20.70	19.27	17.81	17.93	18.18	18.74	19.32
5	20.69	21.14	20.82	20.32	20.26	20.71	19.09	17.80	17.93	18.19	18.75	19.34
6	20.72	21.15	20.78	20.31	20.29	20.73	18.96	17.78	17.96	18.21	18.77	19.37
7	20.72	21.17	20.74	20.29	20.28	20.75	18.84	17.76	17.98	18.23	18.79	19.38
8	20.74	21.18	20.70	20.28	20.30	20.76	18.72	17.75	18.00	18.24	18.81	19.41
9	20.76	21.19	20.67	20.27	20.31	20.76	18.62	17.74	18.00	18.26	18.83	19.43
10	20.78	21.20	20.64	20.26	20.32	20.78	18.54	17.72	18.02	18.29	18.85	19.45
11	20.79	21.22	20.62	20.26	20.34	20.80	18.46	17.71	18.02	18.29	18.87	19.47
12	20.81	21.23	20.59	20.25	20.35	20.81	18.39	17.68	18.04	18.30	18.90	19.50
13	20.82	21.24	20.57	20.24	20.38	20.83	18.36	17.68	18.05	18.33	18.91	19.52
14	20.84	21.25	20.53	20.24	20.40	20.84	18.32	17.68	18.03	18.35	18.93	19.54
15	20.85	21.25	20.45	20.23	20.43	20.85	18.27	17.71	18.06	18.36	18.95	19.55
16	20.86	21.26	20.45	20.22	20.45	20.86	18.24	17.71	18.09	18.37	18.96	19.57
17	20.87	21.26	20.45	20.21	20.47	20.87	18.23	17.69	18.07	18.39	18.98	19.60
18	20.88	21.28	20.44	20.21	20.48	20.89	18.20	17.67	18.04	18.41	19.01	19.62
19	20.89	21.29	20.43	20.20	20.50	20.90	18.16	17.68	18.03	18.43	19.03	19.63
20	20.91	21.29	20.42	20.20	20.52	20.91	18.13	17.67	18.06	18.45	19.04	19.65
21	20.93	21.30	20.35	20.20	20.53	20.91	18.09	17.68	18.06	18.46	19.06	19.67
22	20.94	21.29	20.35	20.19	20.54	20.90	18.05	17.70	18.05	18.48	19.07	19.69
23	20.96	21.30	20.36	20.19	20.54	20.91	18.01	17.71	18.07	18.50	19.09	19.70
24	20.98	21.29	20.37	20.20	20.59	20.90	17.98	17.71	18.09	18.52	19.12	19.72
25	20.99	21.27	20.36	20.20	20.60	20.86	17.96	17.71	18.09	18.54	19.14	19.74
26	21.00	21.24	20.37	20.20	20.62	20.78	17.93	17.73	18.09	18.56	19.15	19.76
27	21.01	21.20	20.37	20.20	20.63	20.61	17.90	17.74	18.10	18.56	19.17	19.78
28	21.03	21.15	20.36	20.21	20.65	20.47	17.88	17.74	18.13	18.59	19.20	19.79
29	21.05	21.10	20.36	20.21	---	20.36	17.86	17.74	18.14	18.62	19.22	19.81
30	21.06	21.05	20.37	20.23	---	20.22	17.86	17.77	18.14	18.65	19.24	19.84
31	21.07	---	20.35	20.23	---	20.05	---	17.81	---	18.67	19.26	---
LOW	21.07	21.30	21.00	20.35	20.65	20.91	19.87	17.84	18.14	18.67	19.26	19.84
HIGH	20.63	21.05	20.35	20.19	20.21	20.05	17.86	17.67	17.81	18.16	18.68	19.28



CUMBERLAND COUNTY

Water-quality data from the Windham aquifer, Windham, Maine, Water Year October 2002 to September 2003

Samples were collected at 20 wells in the Windham sand and gravel aquifer as part of an ongoing cooperative monitoring program with the town of Windham. The ground water well CW 1983, station number 435039070261101, is equipped with an electronic water-level recorder that collects water level data. Those data are presented in the preceding section, Ground-Water Records.

PERIOD OF RECORD.--CHEMICAL ANALYSES: Water year 1996, published in OFR 98-265; Water year 1998, published in WRIR 00-4048 and OFR 02-145; Water years 2000, 2001, published in OFR 02-145; except for two new wells drilled in June 2003, local id CW 2025, station number 435022070255401 and local id CW 2026, station number 434955070261401, which are give below.

All wells were sampled following USGS protocols as described in the Explanation of the records section in this report. Low-flow sampling procedures were used. The flow rates ranged from 0.13 to 0.48 gallons per minute and the pumping period from 28 to 72 minutes.

MULTIPLE STATION ANALYSES

Station number	Local ID	Date	Time	Depth of well, feet below LSD (72008)	Depth to water level, feet below LSD (72019)	Baro-metric pres-sure, mm Hg (00025)	Dis-solved oxygen, mg/L (00300)	Dis-solved oxygen, percent of saturation (00301)	pH, unfltrd field, std units (00400)	Specif. conduc-tance, uS/cm 25 degC (00095)	Temper-ature, deg C (00010)	Sodium, water, fltrd, mg/L (00930)	Chlor-ide, water, fltrd, mg/L (00940)
434955070261401	2026	09-05-03	1515	22.5	11.64	750	9.4	93	5.6	216	14.3	--	--
435002070255601	1990	08-27-03	1000	80	27.50	746	.2	2	7.5	347	12.7	18.6	47.9
435002070255701	1971	08-27-03	1110	22	16.19	746	5.6	54	5.9	45	12.5	3.06	3.32
435004070262101	2012	09-03-03	1550	27	16.33	756	.2	2	6.9	588	12.0	32.6	88.2
435008070253901	1979	09-03-03	1045	109	37.84	758	4.8	45	6.6	318	12.6	23.6	50.7
435008070253902	2005	09-03-03	1215	48	36.10	758	9.4	92	5.7	281	14.2	36.5	53.7
435008070262901	1992	08-27-03	1330	54	13.69	744	4.2	40	5.7	108	12.0	--	--
435008070262902	1993	08-27-03	1430	27	10.50	744	3.4	32	5.8	99	10.9	9.96	15.3
435014070264901	2011	08-26-03	1530	27	14.23	748	10.2	102	5.7	104	14.6	15.0	23.5
435018070263201	2010	08-28-03	0940	32	16.27	755	7.0	66	5.4	359	12.3	44.1	90.3
435022070255401	2025	09-03-03	1420	55	34.63	758	.2	2	6.5	301	11.6	21.7	48.5
435026070264101	1999	09-05-03	1305	80	22.89	750	1.0	10	8.7	120	14.4	6.22	7.36
435026070264102	2009	09-04-03	1515	22	14.05	748	1.8	17	5.6	588	12.5	53.4	106
435040070264501	2007	08-26-03	1000	24	9.44	751	7.9	75	5.7	674	12.4	95.0	170
435041070262301	2000	09-04-03	1050	70	27.58	748	.2	2	6.8	329	10.6	20.8	40.2
435055070263601	1985	08-26-03	1345	25.7	3.74	750	.1	1	6.1	115	10.8	6.09	16.4
435056070263701	1984	08-26-03	1215	132	3.60	750	5.3	47	6.9	155	9.6	6.25	9.87
435131070261401	2001	08-28-03	1140	127	15.00	755	.2	2	7.0	138	9.3	--	--
435131070261402	2008	08-28-03	1250	27	13.71	754	6.4	56	5.4	35	8.8	3.52	3.58
435039070261101	1983	09-05-03	1005	37.6	17.18	748	4.6	41	6.3	150	9.9	--	--

Station number	Local ID	Date	Ammonia water, fltrd, mg/L as N (00608)	Nitrite + nitrate water, fltrd, mg/L as N (00631)	Nitrite water, fltrd, mg/L as N (00613)	Ortho-phos-phate, water, fltrd, mg/L as P (00671)	Phos-phorus, water, fltrd, mg/L (00666)	Boron, water, fltrd, ug/L (01020)
434955070261401	2026	09-05-03	<.41	3.33	<.080	<.18	<.004	--
435002070255601	1990	08-27-03	<.04	<.06	<.008	<.02	<.004	13
435002070255701	1971	08-27-03	<.04	.47	<.008	E.02	.020	E4.3
435004070262101	2012	09-03-03	<.04	3.11	<.008	<.02	.005	33
435008070253901	1979	09-03-03	<.04	2.55	E.004	<.02	.005	27
435008070253902	2005	09-03-03	<.04	5.10	<.008	<.02	.007	52
435008070262901	1992	08-27-03	<.04	1.57	<.008	<.02	<.004	--
435008070262902	1993	08-27-03	<.04	1.50	<.008	<.02	E.003	13
435014070264901	2011	08-26-03	<.04	.43	<.008	<.02	<.004	E5.0
435018070263201	2010	08-28-03	<.04	1.54	<.008	<.02	<.004	E6.3
435022070255401	2025	09-03-03	<.04	.06	<.008	<.02	.009	36
435026070264101	1999	09-05-03	<.41	<.60	<.080	<.18	.042	10
435026070264102	2009	09-04-03	8.73	15.7	.027	<.02	.011	26
435040070264501	2007	08-26-03	<.04	4.39	<.008	E.01	.012	8.7
435041070262301	2000	09-04-03	<.04	4.72	.056	<.02	.008	13
435055070263601	1985	08-26-03	<.04	<.06	<.008	<.02	E.003	E6.6
435056070263701	1984	08-26-03	<.04	1.13	<.008	<.02	.005	E6.1
435131070261401	2001	08-28-03	<.04	<.06	<.008	.03	.032	--
435131070261402	2008	08-28-03	<.04	.18	<.008	<.02	E.003	<7.0
435039070261101	1983	09-05-03	<.41	.83	<.008	<.18	E.003	--

Remark codes used in this report:

< -- Less than
E -- Estimated value

CUMBERLAND COUNTY—Continued

Water-quality data from the Windham aquifer, Windham, Maine, Water Year October 2002 to September 2003—Continued

Three of the twenty wells sampled in Windham in water year 2003 were also sampled for wastewater-related contaminants, analyzed by the National Water Quality Laboratory schedule 1433. The three wells sampled for this additional schedule were: local id CW 2005, station number 435008070253902, local id CW 2000, station number 435041070262301, and local id CW 2009, station number 435026070264102. The compounds analyzed are listed in the table below with the minimum reporting levels (LRL) and parameter codes (PCode). Water samples listed on the previous page for these three wells were analyzed for all the compounds listed. Although the presence of some of these compounds was detected, all were below the laboratory reporting levels.

WASTEWATER-RELATED COMPOUNDS, SCHEDULE 1433

PCode	Compound name	LRL (µg/L)	PCode	Compound name	LRL (µg/L)
62005	Cotinine	1	34459	Pentachlorophenol	2
62052	Ethynyl estradiol	5	62089	Tributyl phosphate	0.5
62063	5-Methyl-1H-benzotriazole	2	62092	Triphenyl phosphate	0.5
62066	Anthraquinone	0.5	62093	Tri(2-butoxyethyl)phosphate	0.5
62064	Acetophenone	0.5	62087	Tri(2-chloroethyl)phosphate	0.5
62065	Acetyl hexamethyl tetrahydronaphthalene (AHTN)	0.5	04037	Prometon	0.5
34221	Anthracene	0.5	34470	Pyrene	0.5
34572	1,4-Dichlorobenzene	0.5	62081	Methyl salicylate	0.5
34248	Benzo[a]pyrene	0.5	62058	3-Methyl-1(H)-indole (Skatole)	1
62067	Benzophenone	0.5	62068	beta-Sitosterol	2
04029	Bromacil	0.5	62086	beta-Stigmastanol	2
34288	Bromoform	0.5	62090	Triclosan	1
62059	3-tert-Butyl-4-hydroxy anisole (BHA)	5	62088	Tris (dichlorisopropyl) phosphate	0.5
50305	Caffeine	0.5			
62070	Camphor	0.5			
82680	Carbaryl	1			
62071	Carbazole	0.5			
38933	Chlorpyrifos	0.5			
62072	Cholesterol	2			
62057	3-beta-Coprostanol	2			
62078	Isopropylbenzene	0.5			
62082	N,N-diethyl-meta-toluamide (DEET)	0.5			
39572	Diazinon	0.5			
38775	Dichlorvos	1			
62069	Bisphenol A	1			
62074	Equilenin	5			
62053	17-beta-Estradiol	5			
62484	Estrone	5			
62091	Triethyl citrate (ethyl citrate)	0.5			
34476	Tetrachloroethylene	0.5			
34377	Fluoranthene	0.5			
62075	Hexahydrohexamethylcyclopentabenzopyran (HHCB)	0.5			
62076	Indole	0.5			
62077	Isoborneol	0.5			
34409	Isophorone	0.5			
62079	Isoquinoline	0.5			
62073	d-Limonene	0.5			
62080	Menthol	0.5			
50359	Metalaxyl	0.5			
39415	Metolachlor	0.5			
34443	Naphthalene	0.5			
62054	1-Methylnaphthalene	0.5			
62055	2,6-Dimethylnaphthalene	0.5			
62056	2-Methylnaphthalene	0.5			
62083	Nonylphenol, diethoxy- (total)	5			
62084	p-Cresol	1			
62060	4-Cumylphenol	1			
62085	para-Nonylphenol (total)	5			
62061	4-n-Octylphenol	1			
62062	4-tert-Octylphenol	1			
34462	Phenanthrene	0.5			
34466	Phenol	0.5			

Organic pesticide compounds, Schedule 2001, and volatile organic compounds (VOC), Schedule 2020, are listed with minimum reporting levels below. Water samples listed on the next page were analyzed for all the compounds listed but only compounds that were detected in one or more samples will appear.

Organic Pesticide Table

PCode	Compound name	LRL (µg/L)
34253	alpha-HCH	0.005
49260	Acetochlor	0.006
46342	Alachlor	0.005
82660	2,6-Diethylaniline	0.006
39632	Atrazine	0.007
82686	Azinphos-methyl	0.05
82673	Benfluralin	0.01
4028	Butylate	0.004
82680	Carbaryl	0.041
82674	Carbofuran	0.02
38933	Chlorpyrifos	0.005
82687	cis-Permethrin	0.006
4041	Cyanazine	0.018
82682	Dacthal	0.003
4040	2-Chloro-4-isopropylamino-6-amino-s-triazine	0.006
39572	Diazinon	0.005
39381	Dieldrin	0.009
82677	Disulfoton	0.021
82668	EPTC	0.004
82663	Ethalfuralin	0.009
82672	Ethoprophos	0.005
62169	Desulfinylfipronil amide	0.029
62167	Fipronil sulfide	0.013
62168	Fipronil sulfone	0.024
62170	Desulfinylfipronil	0.012
62166	Fipronil	0.016
4095	Fonofos	0.003
39341	Lindane	0.004
82666	Linuron	0.035
39532	Malathion	0.027
82667	Parathion-methyl	0.015
39415	Metolachlor	0.013
82630	Metribuzin	0.006
82671	Molinate	0.003
82684	Napropamide	0.007
34653	p,p'-DDE	0.003
39542	Parathion	0.01
82669	Pebulate	0.004
82683	Pendimethalin	0.022
82664	Phorate	0.011
4037	Prometon	0.005
82676	Propyzamide	0.004
4024	Propachlor	0.025
82679	Propanil	0.011
82685	Propargite	0.023
4035	Simazine	0.005
82670	Tebuthiuron	0.016
82665	Terbacil	0.034
82675	Terbufos	0.017
82681	Thiobencarb	0.01
82678	Tri-allate	0.002
82661	Trifluralin	0.009

Volatile Organic Compounds Table --Continued

PCode	Compound name	LRL (µg/L)
34371	Ethylbenzene	0.03
34566	1,3-Dichlorobenzene	0.03
77342	Butylbenzene	0.12
77224	n-Propylbenzene	0.042
34536	1,2-Dichlorobenzene	0.048
34571	1,4-Dichlorobenzene	0.034
77350	sec-Butylbenzene	0.06
77353	tert-Butylbenzene	0.06
50002	Bromoethene	0.1
32104	Bromoforn	0.1
39702	Hexachlorobutadiene	0.14
77041	Carbon disulfide	0.038
32102	Tetrachloromethane	0.06
32106	Chloroform	0.024
77223	Isopropylbenzene	0.038
77562	1,1,1,2-Tetrachloroethane	0.03
34506	1,1,1-Trichloroethane	0.032
77652	1,1,2-Trichlorotrifluoroethane	0.038
77651	1,2-Dibromoethane	0.036
32103	1,2-Dichloroethane	0.13
34396	Hexachloroethane	0.14
34516	1,1,2,2-Tetrachloroethane	0.16
34311	Chloroethane	0.12
81576	Diethyl ether	0.08
50004	Ethyl tert-butyl ether	0.05
77093	cis-1,2-Dichloroethylene	0.024
34475	Tetrachloroethylene	0.06
34546	trans-1,2-Dichloroethylene	0.032
39180	Trichloroethylene	0.038
34496	1,1-Dichloroethane	0.035
81607	Tetrahydrofuran	2.2
81577	Diisopropyl ether	0.1
85795	m- and p-Xylene	0.06
77226	1,3,5-Trimethylbenzene	0.044
73570	Ethyl methacrylate	0.18
81597	Methyl methacrylate	0.35
81593	Methyl acrylonitrile	0.76
77297	Bromochloromethane	0.12
32101	Bromodichloromethane	0.028
32105	Dibromochloromethane	0.1
34668	Dichlorodifluoromethane	0.18
34488	Trichlorofluoromethane	0.16
49991	Methyl acrylate	2
34413	Bromomethane	0.26
34418	Chloromethane	0.17
77424	Methyl iodide	0.35
78032	tert-Butyl methyl ether	0.17
30217	Dibromomethane	0.05
34423	Dichloromethane	0.06
34696	Naphthalene	0.52
77135	o-Xylene	0.038
77356	4-Isopropyl-1-methylbenzene	0.08
77443	1,2,3-Trichloropropane	0.18
77173	1,3-Dichloropropane	0.06
77170	2,2-Dichloropropane	0.05
82625	1,2-Dibromo-3-chloropropane	0.51
77168	1,1-Dichloropropene	0.026
78109	3-Chloropropene	0.5
34704	cis-1,3-Dichloropropene	0.05
34699	trans-1,3-Dichloropropene	0.09
34541	1,2-Dichloropropane	0.029
77222	1,2,4-Trimethylbenzene	0.056
77128	Styrene	0.042
50005	tert-Pentyl methyl ether	0.08
34010	Toluene	0.05
77275	2-Chlorotoluene	0.04
77220	o-Ethyl toluene	0.06
77277	4-Chlorotoluene	0.05
39175	Vinyl chloride	0.06
34511	1,1,2-Trichloroethane	0.064
34501	1,1-Dichloroethylene	0.024

Volatile Organic Compound Table

PCode	Compound name	LRL (µg/L)
49999	1,2,3,4-Tetramethylbenzene	0.14
50000	1,2,3,5-Tetramethylbenzene	0.14
81595	2-Butanone	4
73547	trans-1,4-Dichloro-2-butene	0.7
77103	2-Hexanone	0.7
78133	4-Methyl-2-pentanone	0.37
81552	Acetone	6
34215	Acrylonitrile	1.2
34030	Benzene	0.021
77613	1,2,3-Trichlorobenzene	0.27
77221	1,2,3-Trimethylbenzene	0.06
34551	1,2,4-Trichlorobenzene	0.12
81555	Bromobenzene	0.028
34301	Chlorobenzene	0.028

WATER QUALITY AT MISCELLANEOUS GROUND-WATER WELLS
(WATER YEAR OCTOBER 2002 TO SEPTEMBER 2003)

Remarks: PS, public-supply (gravel-packed) well; BEDROCK, crystalline-rock aquifer; 112SRFD, surficial aquifer; LSD, land-surface datum; gal/min, gallons per minute; NTU, nephelometric turbidity unit; mm Hg, millimeters mercury; mg/L, milligrams per liter; uS/cm, microsiemens per centimeter; deg C, degrees celcius; ug/L, micrograms per liter; "E", estimated concentrations; "<", less than; "M", presence verified, not quantified. Organic pesticide compounds, analyzed by NWQL Schedule 2001, and volatile organic compounds (VOCs), analyzed by NWQL Schedule 2020, are listed with laboratory reporting levels in the previous tables. Only pesticides and VOCs identified by the analyses (either as estimated values or values measured at or above the laboratory reporting level) for one or more samples are listed in the water-quality tables. Water-quality data presented in this table were collected by the New England Coastal Basins National Water-Quality Assessment Program (NAWQA) as part of a National Ground Water Network to determine long-term trends in ground-water quality. Accurate latitude and longitudinal data are available for the wells, but are omitted from this table. Anyone interested in obtaining this locational data should contact the USGS Information Officer, NH/VT District, at dc_nh@usgs.gov.

Local identifier	Well Type	Geo-logic unit	Date	Time	Depth of well, feet below LSD (72008)	Depth to water level, feet below LSD (72019)	Altitude of land surface, feet (72000)	Flow rate, instantaneous gal/min (00059)	Turbidity, unfltrd field, NTU (61028)	Barometric pressure, mm Hg (00025)	Dis-solved oxygen, mg/L (00300)	Dis-solved oxygen, percent of saturation (00301)	
ME-ANW 1131	domestic	BEDROCK	07-31-03	1000	262	--	500	1.0	.5	755	.4	4	
ME-OW 387	PS	112SRFD	07-30-03	1000	82	--	354	.8	.1	758	6.0	52	
ME-SMW 82	domestic	BEDROCK	07-29-03	1000	100	8.55	360	2.0	1.6	749	.1	0	
ME-SMW 83	domestic	BEDROCK	07-29-03	1000	175	3.05	630	1.8	.1	--	10.0	88	
			Date	Temperature, air, deg C (00020)	Temperature, water, deg C (00010)	Hardness, water, unfltrd mg/L as CaCO3 (00900)	Calcium, water, fltrd, mg/L (00915)	Magnesium, water, fltrd, mg/L (00925)	Potassium, water, fltrd, mg/L (00935)	Sodium, water, fltrd, mg/L (00930)	Alkalinity, water flt inc tit field, mg/L as CaCO3 (39086)		
ME-ANW 1131	07-31-03	7.7	170	25.0	11.4	74	21.2	5.09	.96	7.36	65		
ME-OW 387	07-30-03	6.0	307	25.0	9.3	90	29.5	4.00	2.48	24.5	56		
ME-SMW 82	07-29-03	7.3	393	25.0	10.8	180	42.9	18.6	2.67	8.79	139		
ME-SMW 83	07-29-03	6.8	192	25.0	9.8	88	24.6	6.49	.61	3.64	61		
			Date	Bicarbonate, water flt incrm. titr., field, mg/L (00453)	Bromide, water, fltrd, mg/L (71870)	Chloride, water, fltrd, mg/L (00940)	Fluoride, water, fltrd, mg/L (00950)	Silica, water, fltrd, mg/L (00955)	Sulfate, water, fltrd, mg/L (00945)	Sulfide, water, fltrd, mg/L (99118)	Residue, water, fltrd, sum of constituents, mg/L (70301)	Ammonia + org-N, fltrd, mg/L as N (00623)	Ammonia, water, fltrd, mg/L as N (00608)
ME-ANW 1131	07-31-03	79	E.01	3.52	.6	17.3	11.5	.003	107	<.10	<.04		
ME-OW 387	07-30-03	68	.02	41.2	<.2	14.6	16.6	--	177	<.10	<.04		
ME-SMW 82	07-29-03	169	.06	32.3	<.2	16.0	12.7	.006	218	<.10	<.04		
ME-SMW 83	07-29-03	74	E.01	11.4	<.2	7.62	8.9	--	103	<.10	<.04		
			Date	Nitrite + nitrate, water, fltrd, mg/L as N (00631)	Nitrite, water, fltrd, mg/L as N (00613)	Orthophosphate, water, fltrd, mg/L as P (00671)	Aluminum, water, fltrd, ug/L (01106)	Antimony, water, fltrd, ug/L (01095)	Arsenic, water, fltrd, ug/L (01000)	Barium, water, fltrd, ug/L (01005)	Beryllium, water, fltrd, ug/L (01010)	Boron, water, fltrd, ug/L (01020)	Cadmium, water, fltrd, ug/L (01025)
ME-ANW 1131	07-31-03	<.06	<.008	<.02	72	<.30	<.3	38	<.06	<7	<.04		
ME-OW 387	07-30-03	2.44	<.008	<.02	8	<.30	E.1	18	<.06	25	E.03		
ME-SMW 82	07-29-03	<.06	<.008	<.02	<2	<.30	E.2	73	<.06	8	<.04		
ME-SMW 83	07-29-03	.77	<.008	<.54	<2	<.30	.5	1	<.06	14	<.04		

WATER QUALITY AT MISCELLANEOUS GROUND-WATER WELLS-- continued

Local identifier	Date	Chromium, water, fltrd, ug/L (01030)	Cobalt, water, fltrd, ug/L (01035)	Copper, water, fltrd, ug/L (01040)	Iron-(II), water, unfltrd, ug/L (99032)	Iron, water, fltrd, ug/L (01046)	Lead, water, fltrd, ug/L (01049)	Lithium, water, fltrd, ug/L (01130)	Manganese, water, fltrd, ug/L (01056)	Molybdenum, water, fltrd, ug/L (01060)	Nickel, water, fltrd, ug/L (01065)
ME-ANW 1131	07-31-03	<.8	.04	<.2	30	20	<.08	10.0	33.8	2.7	.29
ME-OW 387	07-30-03	E.4	.30	1.0	--	26	.18	.9	5.0	<.3	1.30
ME-SMW 82	07-29-03	<.8	.10	E.2	270	299	.11	2.8	99.7	.9	.83
ME-SMW 83	07-29-03	<.8	.06	1.5	--	<8	.10	.5	<.2	E.2	.85

	Date	Selenium, water, fltrd, ug/L (01145)	Silver, water, fltrd, ug/L (01075)	Strontium, water, fltrd, ug/L (01080)	Thallium, water, fltrd, ug/L (01057)	Vanadium, water, fltrd, ug/L (01085)	Zinc, water, fltrd, ug/L (01090)	Tebu-thiuron, water, fltrd, 0.7u GF, ug/L (82670)	1,2-Di-chloro-benzene, water, unfltrd, ug/L (34536)	1,4-Di-chloro-benzene, water, unfltrd, ug/L (34571)	Chloro-benzene, water, unfltrd, ug/L (34301)
ME-ANW 1131	07-31-03	<.5	<.20	186	<.04	E.1	<1	<.02	<.03	<.05	<.03
ME-OW 387	07-30-03	<.5	<.20	211	<.04	.4	3	.06	E.09	E.04	E.10
ME-SMW 82	07-29-03	<.5	<.20	452	<.04	.7	M	<.02	<.03	<.05	<.03
ME-SMW 83	07-29-03	<.5	<.20	144	<.04	E.1	M	<.02	<.03	<.05	<.03

	Date	Di-chloro-di-fluoro-methane, wat unfltrd, ug/L (34668)	Methyl-t-butyl ether, water, unfltrd, ug/L (78032)	Tetra-chloro-ethene, water, unfltrd, ug/L (34475)	Tri-chloro-ethene, water, unfltrd, ug/L (39180)	Tri-chloro-methane, water, unfltrd, ug/L (32106)	Rn-222, water, unfltrd, pCi/L (82303)	Uranium natural, water, fltrd, ug/L (22703)
ME-ANW 1131	07-31-03	<.18	.6	<.03	<.04	<.02	920	.26
ME-OW 387	07-30-03	<.18	.4	.10	E.04	E.02	1,290	13.8
ME-SMW 82	07-29-03	E.30	<.2	<.03	<.04	<.02	3,400	.69
ME-SMW 83	07-29-03	E.27	<.2	<.03	<.04	<.02	760	.28