

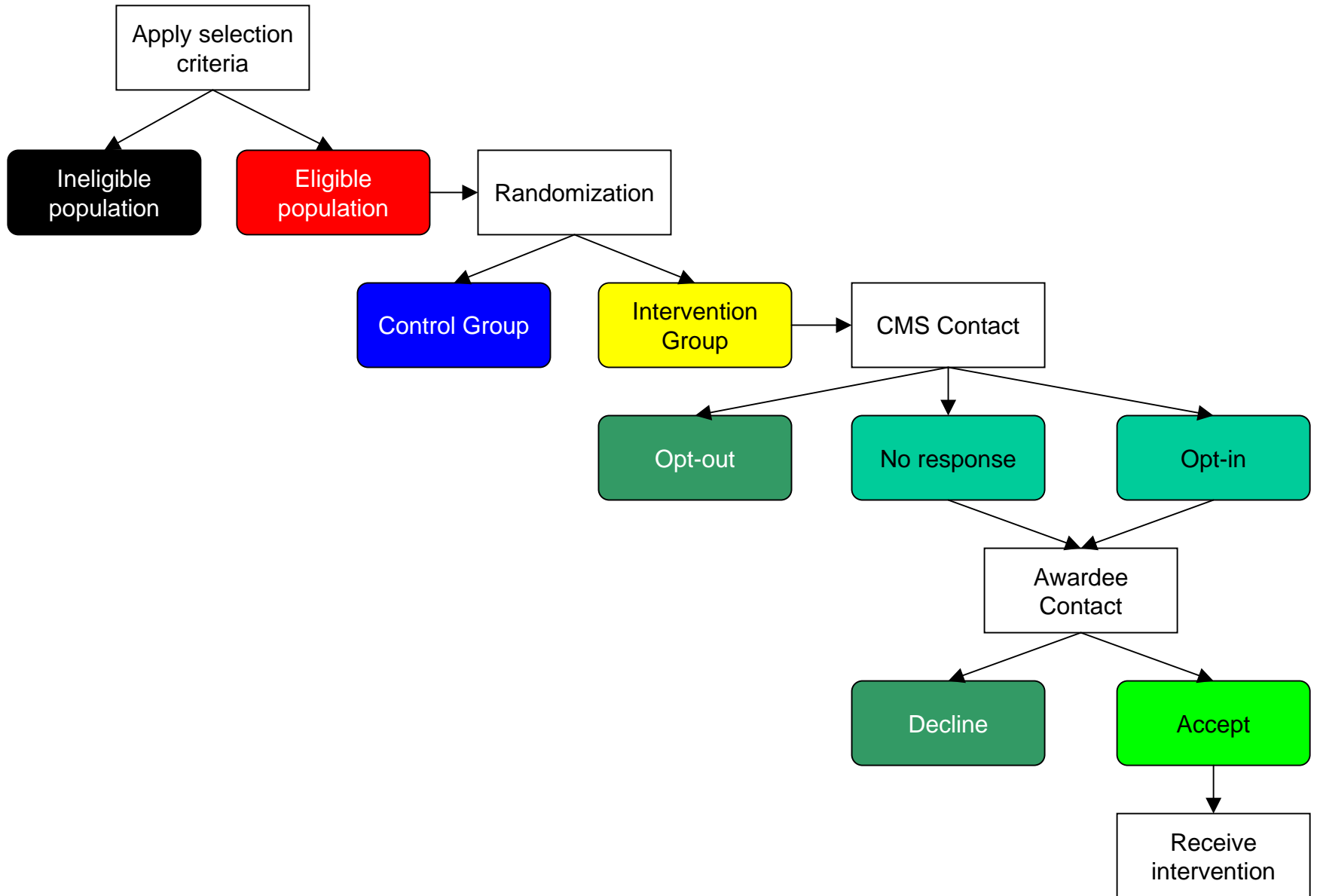
# Care Management for High Cost Beneficiaries Demonstration

Applicants' Teleconference

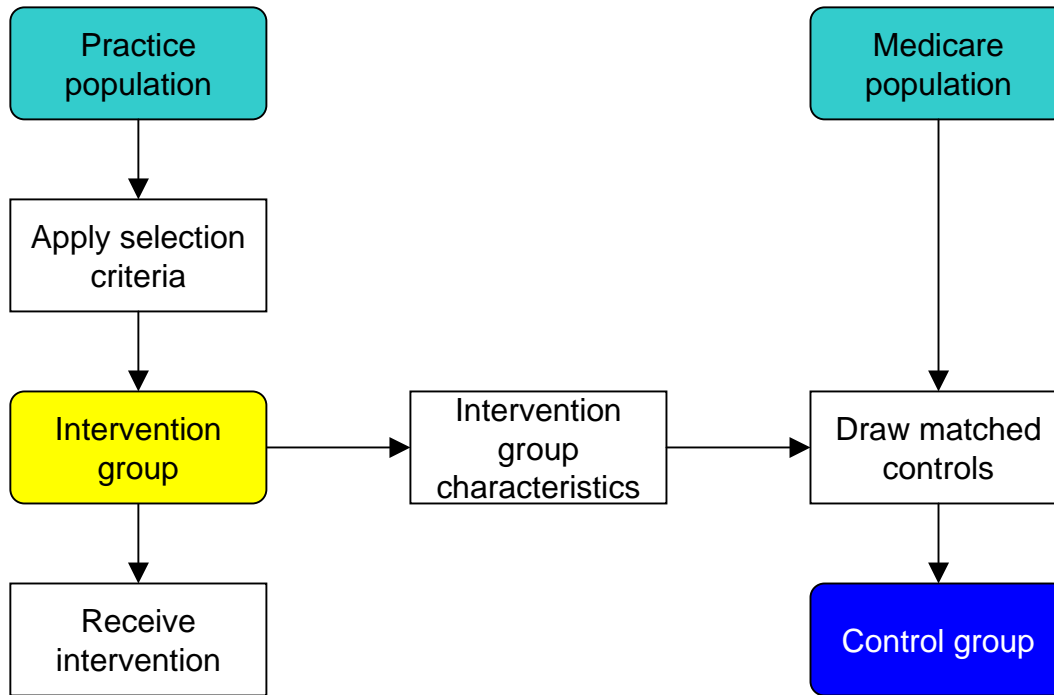
October 29, 2004

Exhibits

# Population-based Design Example



# Practice-based Design Example



# Savings Standard – Example 1

## Successful program

	Control Group	Intervention Group
Claims (PMPM)	\$ 1,000	\$ 800
Administrative Fee (PMPM)		\$ 100
Total Cost (PMPM)		\$ 900
Savings Target (%)	5%	
Savings Standard	\$ 950	\$ 950
Available savings		\$ 50

Savings target exceeded  
Savings shared by CMS and Awardee

# Savings Standard – Example 2

## Break-even program

	Control Group	Intervention Group
Claims (PMPM)	\$ 1,000	\$ 850
Administrative Fee (PMPM)		\$ 100
Total Cost (PMPM)		\$ 950
Savings Target (%)	5%	
Savings Standard	\$ 950	\$ 950
Available savings		\$ -

Savings target achieved

No savings to share with Awardee

# Savings Standard – Example 3

## Partially successful program

	Control Group	Intervention Group
Claims (PMPM)	\$ 1,000	\$ 900
Administrative Fee (PMPM)		\$ 100
Total Cost (PMPM)		\$ 1,000
Savings Target (%)	5%	
Savings Standard	\$ 950	\$ 950
Available savings		\$ (50)

Savings target partially achieved  
Awardee must refund part of fee

# Savings Standard – Example 4

## Unsuccessful program

	Control Group	Intervention Group
Claims (PMPM)	\$ 1,000	\$ 950
Administrative Fee (PMPM)		\$ 100
Total Cost (PMPM)		\$ 1,050
Savings Target (%)	5%	
Savings Standard	\$ 950	\$ 950
Available savings		\$ (100)

Savings target not achieved  
Awardee must refund entire fee