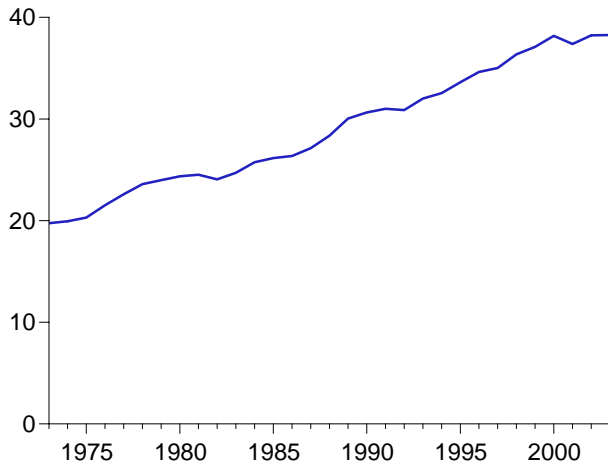
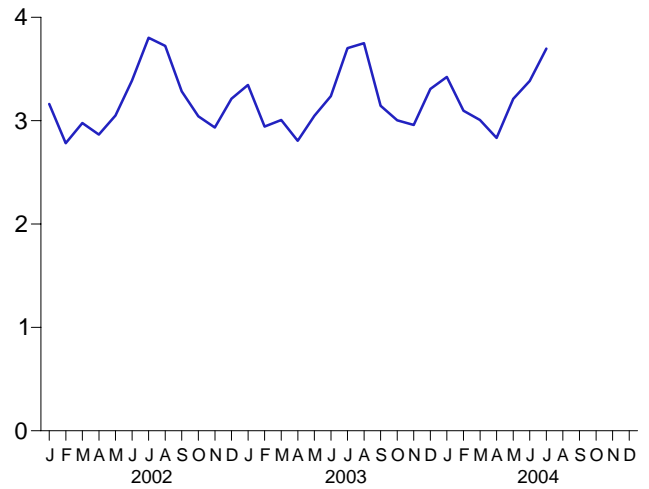


Figure 2.6 Electric Power Sector Energy Consumption
(Quadrillion Btu)

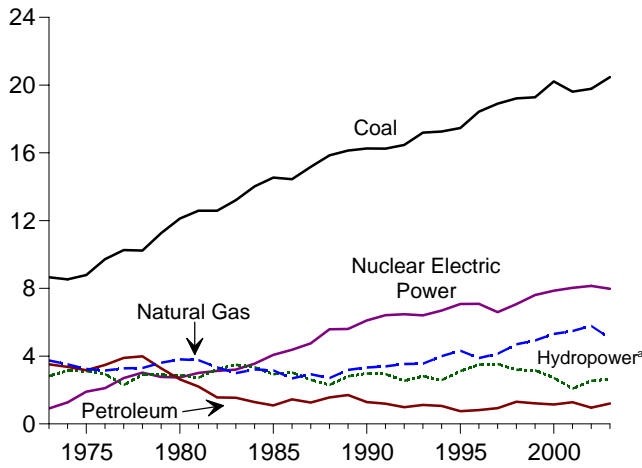
Total, 1973-2003



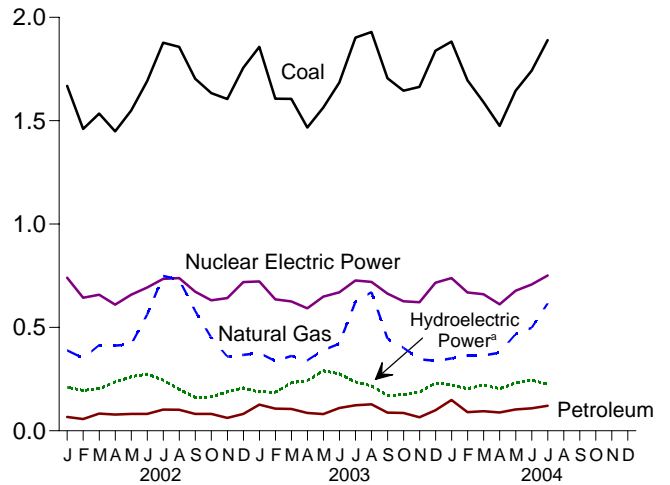
Total, Monthly



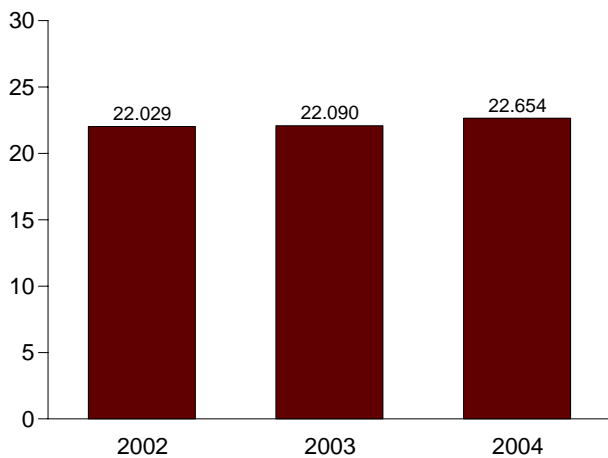
By Major Sources, 1973-2003



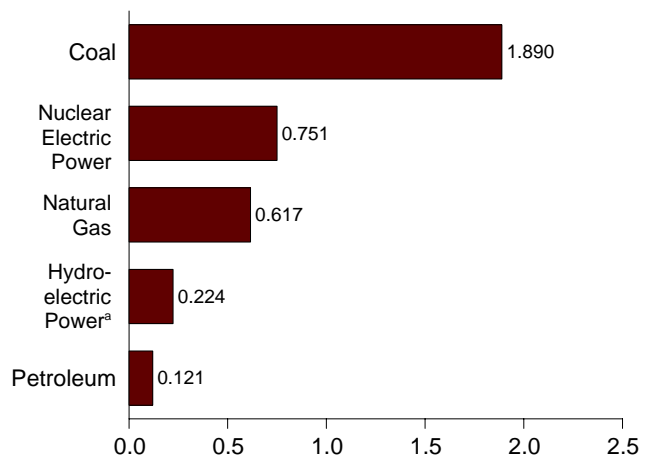
By Major Sources, Monthly



Total, January-July



By Major Sources, July 2004



^aConventional and pumped storage hydroelectric power.
Note: Because vertical scales differ, graphs should not be compared.

Web Page: <http://www.eia.doe.gov/emeu/mer/consump.html>.
Source: Table 2.6.