

# U.S. Natural Gas Imports and Exports--1995

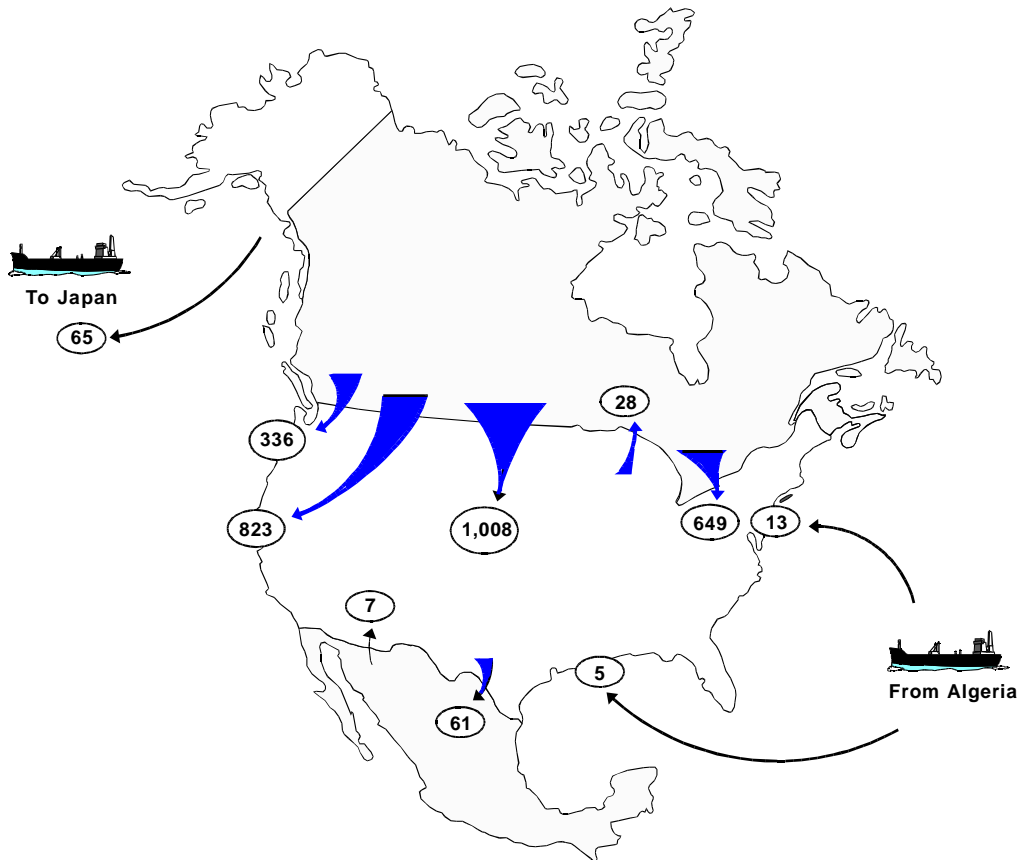
by Ann M. Ducca and Norman L. Crabtree

During 1995, Canada expanded its role in supplying gas to the United States, and Canadian imports represented more than 12 percent of U.S. natural gas consumption. Mexico continued to restructure its natural gas industry. However, future prospects in the near term for exports to Mexico are uncertain due primarily to the recent increases in natural gas production by Petroleos Mexicanos (Pemex) during the later part of 1995 and early 1996 (Figure FE1).

Some of the highlights of 1995 for U.S. natural gas imports and exports are as follows:

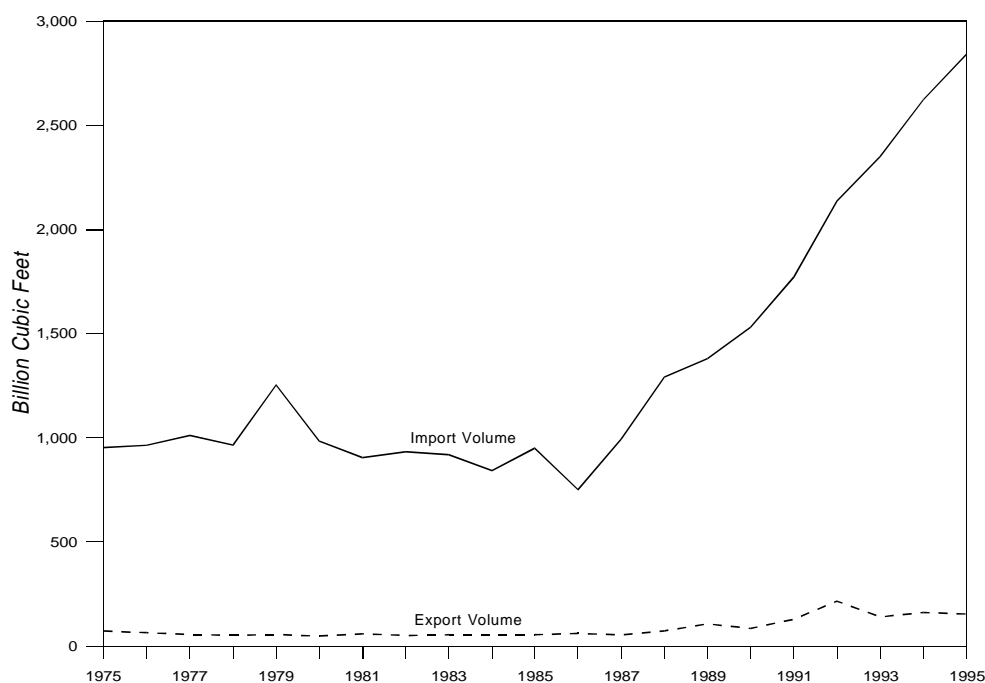
- Net imports rose for the ninth consecutive year, representing more than 12 percent of U.S. natural gas consumption. They have more than doubled over the last 7 years from 1.3 trillion cubic feet in 1989 to 2.7 trillion cubic feet in 1995, an average annual growth rate of 12 percent (Table FE1). Exports showed a slight decrease during 1995 (Figure FE2).

**Figure FE1. Flow of Natural Gas Imports and Exports, 1995**  
(Billion Cubic Feet)



Source: Office of Fossil Energy, U.S. Department of Energy, *Natural Gas Imports and Exports*.

**Figure FE2. Total Natural Gas Imports and Exports, 1975-1995**



Sources: 1994 and Earlier Years: Form FPC-14, "Annual Report for Importers and Exporters of Natural Gas."  
1995: Office of Fossil Energy, U.S. Department of Energy, *Natural Gas Imports and Exports*.

- Pipeline imports from Canada continued to climb to a new record level of 2,816 billion cubic feet (Table FE2). Much of the increase occurred in the West.
- The price of imported and exported natural gas continued to decrease in 1995, in both nominal and constant dollars (Figures FE3 and FE4). From 1994 to 1995, the price of Canadian imports fell sharply to \$1.48 per thousand cubic feet, a 20-percent decrease. As in the previous year, the greatest decline occurred in the West where the price went from \$1.60 to \$0.94 per thousand cubic feet.
- Liquefied natural gas (LNG) imports from Algeria fell 65 percent to 17.9 billion cubic feet because of continuing curtailments which began in August 1994. Sonatrach, the state-owned oil and gas company in Algeria, curtailed exports because of a major renovation project on that nation's liquefaction plants.
- Exports to Mexico increased by 32 percent, and LNG exports to Japan rose 4 percent. However, exports to Canada dropped by 48 percent causing an over-all export decrease of 5 percent from 1994 to 1995 (Table FE3).

- Total natural gas imports have risen steadily and rapidly, reaching 2,841 billion cubic feet in 1995 (Table FE4). Total exports have shown fluctuation in recent years. They dropped 4.7 percent to 154.1 billion cubic feet in 1995 (Table FE5).

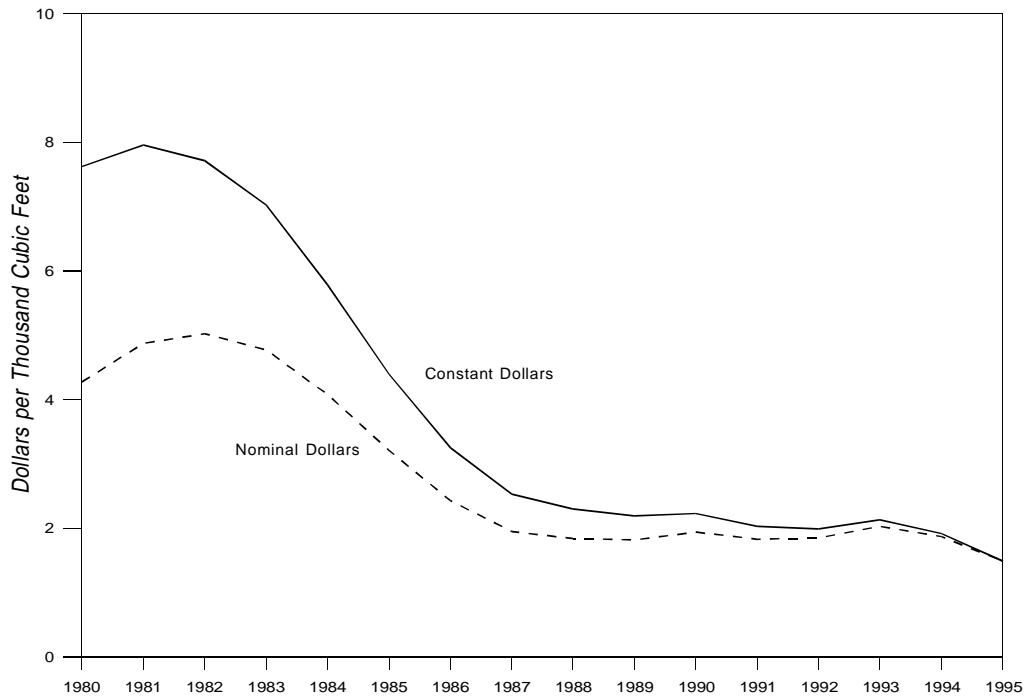
## Trade with Canada

Pipeline imports from Canada continued to grow to a record level of 2,816 billion cubic feet in 1995. Competitive prices, additional cross-border pipeline capacity, and the continued growth in demand for natural gas in the United States contributed to the increase. Natural gas imports from Canada have more than doubled in the last 7 years, while U.S. gas consumption rose 12 percent during the same time period. Net imports, which are nearly all from Canada, represent a growing share of U.S. natural gas consumption--over 12 percent in 1995 (Figure FE5).

Gas well drilling in Canada continues to be fairly strong despite low gas prices. The drilling level peaked in 1994 at 5,300 wells and dropped 36 percent to 3,386 wells in 1995. However, it is still high compared to most past years.<sup>1</sup> Canada's share of the U.S. gas market is expected to continue to grow, and its role as a significant supplier seems secure for years to come.

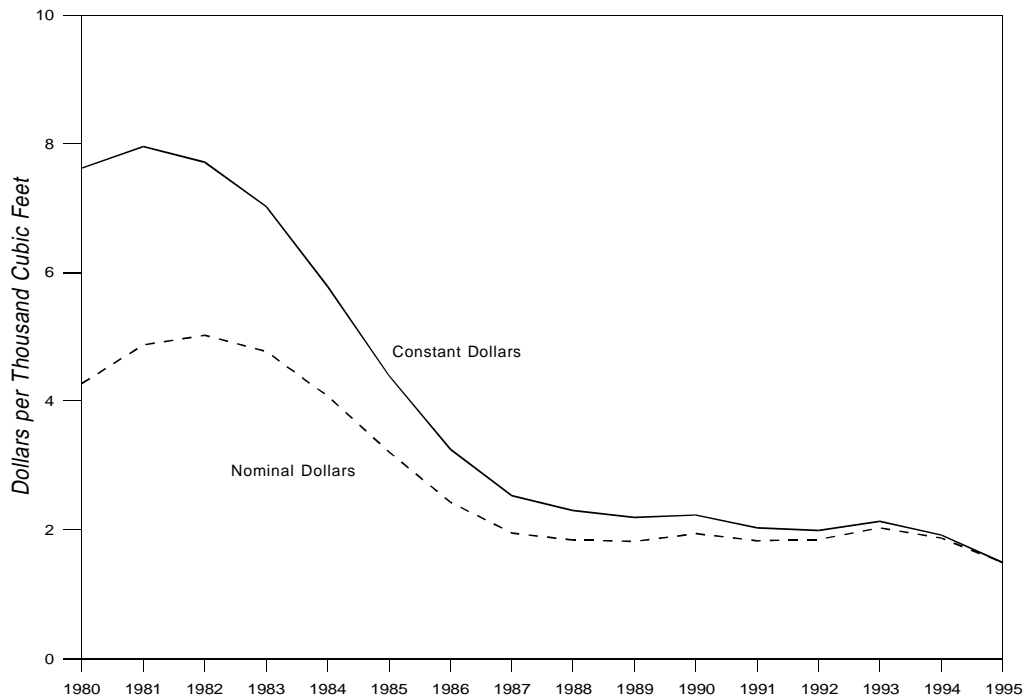
<sup>1</sup> *Canadian Gas Exports in the U.S. Market: 1995 Evaluation and Outlook*, Natural Resources Canada (March 1996).

**Figure FE3. Average Price of U.S. Natural Gas Imports, 1980-1995**



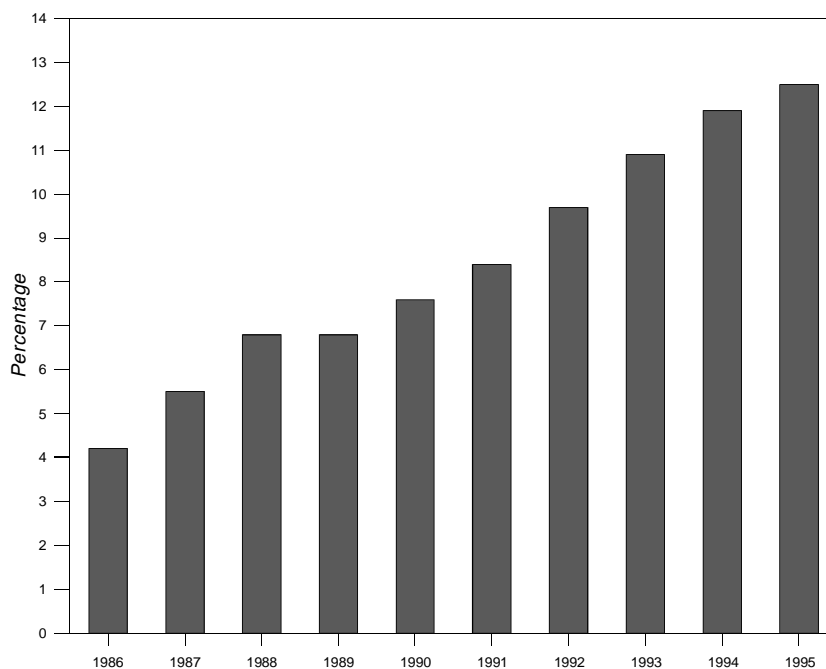
Sources: 1994 and Earlier Years: Form FPC-14, "Annual Report for Importers and Exporters of Natural Gas."  
1995: Office of Fossil Energy, U.S. Department of Energy, *Natural Gas Imports and Exports*.

**Figure FE4. Average Price of U.S. Natural Gas Exports, 1980-1995**



Sources: 1994 and Earlier Years: Form FPC-14, "Annual Report for Importers and Exporters of Natural Gas."  
1995: Office of Fossil Energy, U.S. Department of Energy, *Natural Gas Imports and Exports*.

**Figure FE5. Net Imports as a Percentage of Total Consumption, 1986-1995**



Sources: 1994 and Earlier Years: Form FPC-14, "Annual Report for Importers and Exporters of Natural Gas."  
1995: Office of Fossil Energy, U.S. Department of Energy, *Natural Gas Imports and Exports*.

Pipeline imports from Canada enter the United States in four regional areas: the Pacific Northwest, the West, the Midwest, and the Northeast (Figure FE6 and Table FE6). From 1994 to 1995, natural gas imports rose in all regional areas with the largest volumetric increase (100.4 billion cubic feet) occurring in the West. Western imports climbed 14 percent to 823.5 billion cubic feet, primarily due to the additional capacity on the Pacific Gas Transmission pipeline. They entered the United States through Idaho, and most were destined for California markets.

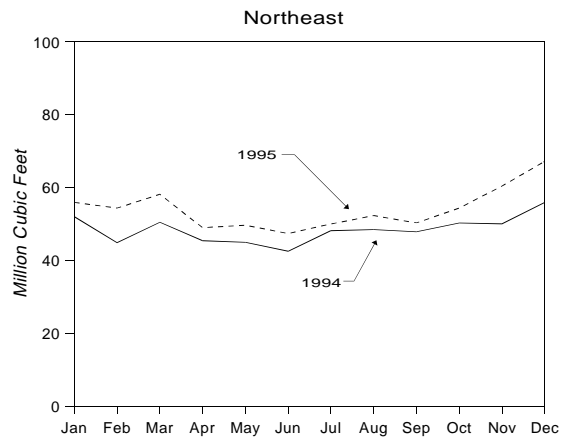
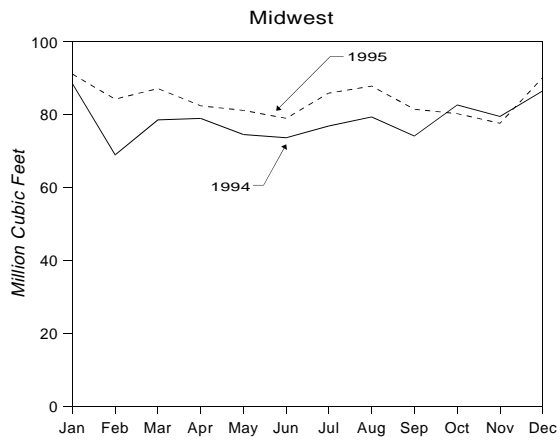
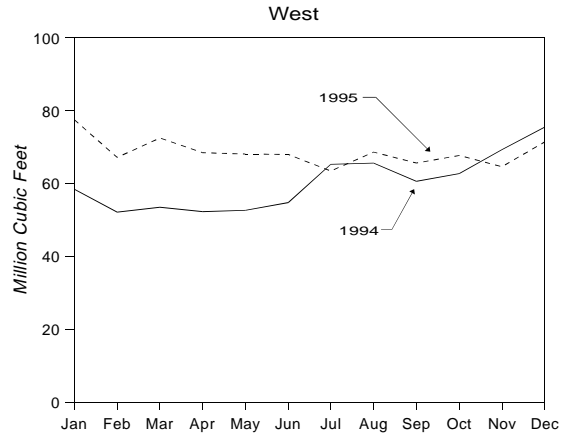
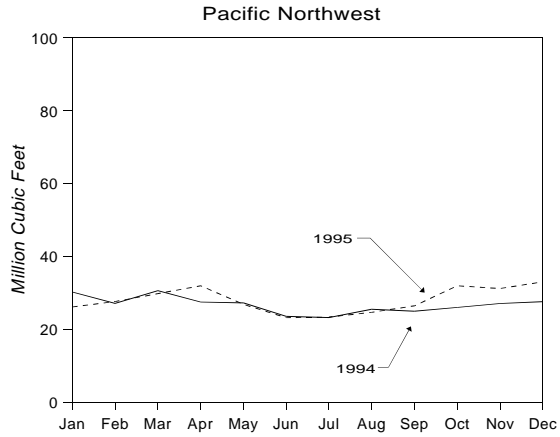
Pacific Northwest imports, entering through the State of Washington, rose 5 percent from 1994 to 1995 to 335.9 billion cubic feet. In the Midwest, the regional area with the highest level of imports, they increased during the same time period by 7 percent to 1,008.3 billion cubic feet. Points of entry for the Midwest are located in Michigan, Minnesota, Montana, and North Dakota. Northeast imports rose 12 percent to 648.8 billion cubic feet. Imports enter the Northeast through New York and Vermont. Imports at Grand Island and Champlain in New York have been increasing at a steady rate since the Empire State Pipeline(Grand Island) and the North Country Pipeline(Champlain) became operational in late 1993. These two New York import points showed the highest growth rates of all entry points in 1995.

Pipeline import capacity from Canada grew marginally in 1995. Capacity at Iroquois was added to accommodate incremental imports to the Northeast during the winter months, and a minor expansion was completed at Niagara Falls. Capacity was also increased at the Sumas, Washington import point.

Despite all of these recent capacity additions, load factors at all major import points are fast approaching the upper limit of existing pipelines' capacity to transport gas into the United States. Although recent growth in imports has been substantial, growth rates for the next two to three years are expected to slow due to capacity restrictions. A number of pipeline projects that could increase capacity and enhance utilization of existing facilities are planned, but will probably not be operational before 1998.

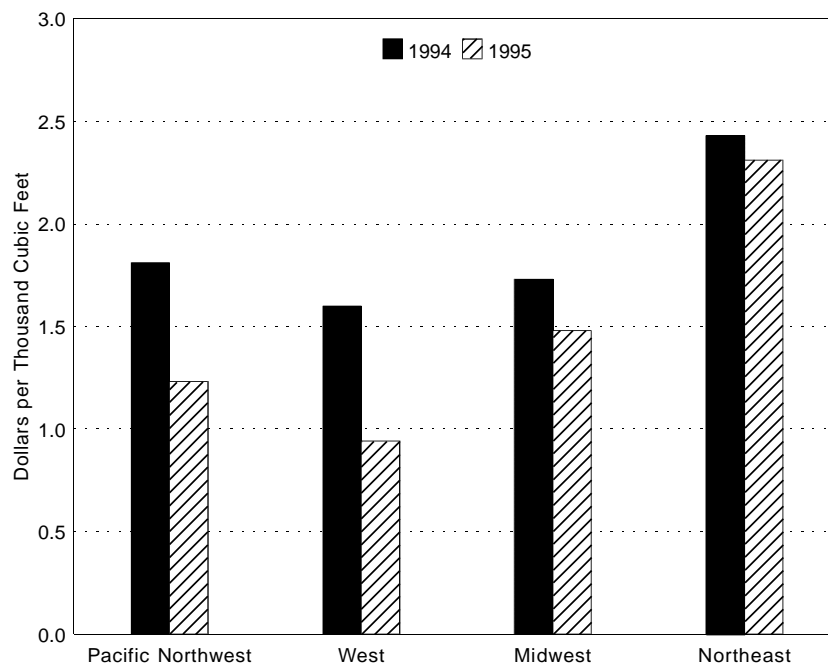
The price of Canadian natural gas imports dropped 20 percent below last year's level to a 20-year record low of \$1.48 per thousand cubic feet (Table FE7). The sharpest drop occurred in the West where the price went from \$1.60 to \$0.94 per thousand cubic feet, mainly because long-term imports were replaced by lower-priced short-term imports (Figure FE7). The year 1995 was the first year in which more Canadian natural gas was imported under short-term authorizations than under long-term authorizations.

**Figure FE6. U.S. Natural Gas Pipeline Imports from Canada by Regional Point of Entry, 1994-1995**



Sources: 1994 and Earlier Years: Form FPC-14, "Annual Report for Importers and Exporters of Natural Gas."  
 1995: Office of Fossil Energy, U.S. Department of Energy, *Natural Gas Imports and Exports.*"

**Figure FE7. Average Price of U.S. Natural Gas Pipeline Imports from Canada by Regional Point of Entry, 1994-1995**



Sources: 1994 and Earlier Years: Form FPC-14, "Annual Report for Importers and Exporters of Natural Gas." 1995: Office of Fossil Energy, U.S. Department of Energy, *Natural Gas Imports and Exports*.

Natural gas exports to Canada represented 18 percent of U.S. exports in 1995. They dropped 48 percent from the 1994 level to 27.6 billion cubic feet. The decrease may be attributed primarily to competitive prices for Canadian gas compared to the price of U.S. exported gas.

## Trade with Mexico

Exports to Mexico reached record levels in 1991 and 1992 but fell dramatically in 1993. In 1994 they rose to 46.5 billion cubic feet, and in 1995 rebounded to reach 61.3 billion cubic feet, a 32 percent increase (Tables FE8 and FE9).

Future export levels are uncertain due to recent increases in natural gas production by Pemex. Pemex was producing about 3.6 billion cubic feet per day. It has increased production to about 4.2 billion cubic feet per day and has a goal of 5 billion cubic feet per day by the year 2000. However, the July 1996 explosion of one of the largest gas processing plants in Mexico, which destroyed a third of Mexico's total processing capacity, may be a major setback in achieving that goal.

Expectations for a rapidly growing demand for natural gas imports from the United States to fuel electric generating plants in Northern Mexico have not yet materialized. While Mexican oil-fired electrical generating plants are being converted to gas service, these conversions are behind scheduled completion dates.

In December 1993, the United States began importing gas from Mexico for the first time since 1984. During 1994, these imports continued through June but represented less than 1 percent of total U.S. natural gas imports. During 1995, imports from Mexico have remained under 1 percent of total U.S. natural gas imports.

In March 1996 the Mexican Energy Regulatory Commission finalized the rules for Mexico's restructured natural gas industry, allowing foreign investment in natural gas storage, distribution, and transmission. The first geographical zone opened to foreign investment is Mexicali, Baja California. A partnership of U.S. and Mexican investors will fund the development of a natural gas distribution system which is expected to become operational during 1998. This project will utilize natural gas imported from the United States.

## Liquefied Natural Gas

During 1995, the United States imported LNG from Algeria into Massachusetts and Louisiana and exported LNG from Alaska to Japan. LNG imports represented 1 percent of total imports, while LNG exports were 42 percent of total exports. Liquefaction makes overseas transportation possible. A 600-to-1 volume reduction is achieved by lowering the temperature of natural gas to approximately minus 260 degrees Fahrenheit.

LNG imports from Algeria fell almost 65 percent to 17.9 billion cubic feet because of curtailments which began in August 1994. Sonatrach, the state-owned oil and gas company in Algeria, curtailed exports because of a major renovation project on that nation's liquefaction plants. There were no shipments of LNG from Algeria in April, June, July, September and October of 1995. Shipments at reduced levels were received during the first quarter of 1996. The impact of the curtailments may lessen soon because the renovation project is near completion.

LNG exports from Alaska to Japan rose 4 percent from 1994 to 1995 to a record 65.3 billion cubic feet. The price for these exports increased 7 percent from the previous year to \$3.41 per thousand cubic feet. The price for imports of LNG from Algeria rose less than 1 percent to \$2.30 per thousand cubic feet.

The Cove Point LNG facility in southern Maryland, mothballed since 1980, reopened in 1995. It is being used to liquefy and store gas for later regasification during peak demand periods. For the present, the facility uses domestic gas, but in the long term it expects to be a receiving terminal for LNG tankers. Similar plans have also been announced for the Elba Island LNG facility in Georgia for late 1997.

There are currently five projects proposed to expand United States-International LNG Trade. They are located in Puerto Rico, Trinidad and Tobago, Nigeria, Alaska, and Venezuela. The Ecoelectrica Project would build a power plant in Puerto Rico to be fueled by LNG, which would be imported from various suppliers. The earliest possible projected in-service date is October 1997. The Trinidad and Tobago Project would develop the natural gas resources off the east coast of

Trinidad and construct an LNG facility to export the gas to the Northeast United States and Europe or Puerto Rico. Initial estimates are for an in-service date in early 1999.

The Nigerian LNG Export Project is a plan to construct a new natural gas liquefaction facility off that nation's coast. The facility would export Nigerian gas from the West Coast of Africa mostly to Europe but also to the United States. The Yukon Pacific LNG Export Project calls for the construction of a new natural gas pipeline parallel to the existing crude oil pipeline in Alaska and construction of a gas liquefaction plant and marine terminal at Valdez. The LNG would be exported from Alaska to Japan and Pacific Rim countries. The Cristobal Colon LNG Export Project would develop natural gas resources off the eastern coast of Venezuela and build a LNG facility to ship to Western Europe and possibly the United States. The projected in-service dates for these three projects are all beyond 2000.

## Data Sources

Data for 1995 are based primarily on company filings made with the U.S. Department of Energy, Office of Fossil Energy. These filings report data on a monthly level and are received quarterly. The Office of Fossil Energy collects these data as part of its regulatory oversight responsibilities. These 1995 data were adjusted by the Energy Information Administration based on updated information provided by respondents.

The data for 1994 and earlier years are taken from Form FPC-14, "Annual Report for Importers and Exporters of Natural Gas." The Form FPC-14 was discontinued in 1995. The data reported on the Form FPC-14 represented physical movements of natural gas. The data collected by the Office of Fossil Energy are reported on an equity (sales) basis. For 1994 and earlier years, comparisons of the information in this Article (physical movements) with the information reported by the Office of Fossil Energy (sales) may show differences because reporting requirements were different. Efforts were made to resolve these differences. Further information about how import and export data are collected is provided in Appendix B, Data Sources.

**Table FE1. Historical Summary of U.S. Natural Gas Net Imports, 1955-1995**  
(Million Cubic Feet)

Year	Total Imports	Total Exports	Net Imports	Total Consumption	Net Imports as Percentage of Total Consumption
1955	10,888	31,029	-	8,693,657	-
1956	10,380	35,963	-	9,288,865	-
1957	37,941	41,655	-	9,846,139	-
1958	135,797	38,719	97,078	10,302,608	0.9
1959	133,990	18,413	115,577	11,321,181	1.0
1960	155,646	11,332	144,314	11,966,537	1.2
1961	218,860	10,747	208,113	12,489,268	1.7
1962	401,534	15,814	385,720	13,266,513	2.9
1963	406,204	16,957	389,247	13,970,229	2.8
1964	443,326	19,603	423,723	14,813,808	2.9
1965	456,394	26,132	430,262	15,279,716	2.8
1966	479,780	24,639	455,141	16,452,403	2.8
1967	564,226	81,614	482,612	17,388,360	2.8
1968	651,885	93,745	558,140	18,632,062	3.0
1969	726,951	51,304	675,647	20,056,240	3.4
1970	820,780	69,813	750,967	21,139,386	3.6
1971	934,548	80,212	854,336	21,793,454	3.9
1972	1,019,496	78,013	941,483	22,101,452	4.3
1973	1,032,901	77,169	955,732	22,049,363	4.3
1974	959,284	76,789	882,495	21,223,133	4.2
1975	953,008	72,675	880,333	19,537,593	4.5
1976	963,768	64,711	899,057	19,946,496	4.5
1977	1,011,002	55,626	955,376	19,520,581	4.9
1978	965,545	52,532	913,013	19,627,478	4.7
1979	1,253,383	55,673	1,197,710	20,240,761	5.9
1980	984,767	48,731	936,036	19,877,293	4.7
1981	903,949	59,372	844,577	19,403,858	4.4
1982	933,336	51,728	881,608	18,001,055	4.9
1983	918,407	54,639	863,768	16,834,914	5.1
1984	843,060	54,753	788,307	17,950,524	4.4
1985	949,715	55,268	894,447	17,280,943	5.2
1986	750,449	61,271	689,178	16,221,296	4.2
1987	992,532	54,020	938,512	17,210,809	5.5
1988	1,293,812	73,638	1,220,174	18,029,588	6.8
1989	1,381,520	106,871	1,274,648	18,800,830	6.8
1990	1,532,259	85,565	1,446,694	18,716,269	7.6
1991	1,773,313	129,244	1,644,068	19,035,156	8.4
1992	2,137,504	216,282	1,921,222	19,544,364	9.7
1993	2,350,115	140,183	2,209,931	20,279,095	10.9
1994	2,623,839	161,738	2,462,101	20,755,471	11.9
1995	2,841,048	154,119	2,686,929	<sup>a</sup> 21,580,665	12.5

<sup>a</sup> Preliminary data.

- = Not applicable.

Notes: Totals may not equal sum of components due to independent rounding. Geographic coverage is the continental United States including Alaska.

Source: **Total Consumption:** *Natural Gas Annual 1990 Volume 2* for 1955 through 1988; *Natural Gas Monthly July 1995* for 1989 through 1995. **Net Imports:** 1955-1971: Federal Power Commission, informally collected by letter. 1972-1994: Energy Information Administration, Form FPC-14, "Annual Report for Importers and Exporters of Natural Gas". 1995: Office of Fossil Energy, U.S. Department of Energy, *Natural Gas Imports and Exports*.



**Table FE2. Summary of U.S. Natural Gas Imports, 1994-1995**

Source	Volume			Average Btu/ Cubic Foot		Revenue (thousand dollars)		Average Price			Average Price		
	(million cubic feet)		Percent Change	1994	1995	1994	1995	(dollars/ thousand cubic feet)		Percent Change	(dollars/ million Btu)		Percent Change
	1994	1995						1994	1995		1994	1995	
<b>Pipeline</b>													
Canada	2,566,049	2,816,408	9.8	1,021	1,021	4,771,646	4,176,509	1.86	1.48	-20.4	1.82	1.45	-20.3
Mexico	7,013	6,722	-4.1	1,013	1,013	13,980	10,289	1.99	1.53	-23.1	1.97	1.51	-23.4
Total	2,573,061	2,823,130	9.7	1,021	1,021	4,785,626	4,186,798	1.86	1.48	-20.4	1.82	1.45	-20.3
<b>LNG</b>													
Algeria	50,778	17,918	-64.7	1,098	1,098	115,748	41,144	2.28	2.30	0.9	2.08	2.09	0.5
Grand Total	2,623,839	2,841,048	8.3	1,022	1,021	4,901,374	4,227,943	1.87	1.49	-20.3	1.83	1.46	-20.2

Notes: Totals may not equal sum of components due to independent rounding. Geographic coverage is the continental United States including Alaska.

Sources: 1994: Energy Information Administration, Form FPC-14, "Annual Report for Importers and Exporters of Natural Gas". 1995: Office of Fossil Energy, U.S. Department of Energy, *Natural Gas Imports and Exports*.

**Table FE3. Summary of U.S. Natural Gas Exports, 1994-1995**

Source	Volume			Average Btu/ Cubic Foot		Cost (thousand dollars)		Average Price			Average Price		
	(million cubic feet)		Percent Change	1994	1995	1994	1995	(dollars/ thousand cubic feet)		Percent Change	(dollars/ million Btu)		Percent Change
	1994	1995						1994	1995		1994	1995	
<b>Pipeline</b>													
Canada	52,556	27,554	-47.6	1,013	1,013	127,412	54,042	2.42	1.96	-19.0	2.39	1.94	-18.8
Mexico	46,500	61,283	31.8	1,011	1,011	78,147	91,653	1.68	1.50	-10.7	1.66	1.48	-10.8
Total	99,057	88,836	-10.3	1,012	1,012	205,559	145,694	2.08	1.64	-21.2	2.05	1.62	-21.0
<b>LNG</b>													
Japan	62,682	65,283	4.1	1,010	1,010	199,141	222,930	3.18	3.41	7.2	3.15	3.38	7.3
Grand Total	161,738	154,119	-4.7	1,011	1,011	404,700	368,624	2.50	2.39	-4.4	2.47	2.37	-4.0

Notes: Totals may not equal sum of components due to independent rounding. Geographic coverage is the continental United States including Alaska.

Sources: 1994: Energy Information Administration, Form FPC-14, "Annual Report for Importers and Exporters of Natural Gas". 1995: Office of Fossil Energy, U.S. Department of Energy, *Natural Gas Imports and Exports*.

**Table FE4. Historical Summary of U.S. Natural Gas Imports, 1955-1995**  
(Volume in Million Cubic Feet; Average Price in Dollars per Thousand Cubic Feet)

Year	Imports from Canada		Imports from Mexico Pipeline	Imports from Algeria LNG	Imports from Indonesia LNG	Total Imports <sup>a</sup>	Average Price
	Pipeline	LNG					
1955	10,881	0	7	0	0	10,888	NA
1956	10,374	0	6	0	0	10,380	NA
1957	20,971	0	16,970	0	0	37,941	NA
1958	89,586	0	46,211	0	0	135,797	NA
1959	83,061	0	50,929	0	0	133,990	NA
1960	108,657	0	46,989	0	0	155,646	NA
1961	167,104	0	51,756	0	0	218,860	NA
1962	350,438	0	51,096	0	0	401,534	NA
1963	356,455	0	49,749	0	0	406,204	NA
1964	390,721	0	52,605	0	0	443,326	NA
1965	404,686	0	51,708	0	0	456,394	NA
1966	430,189	0	49,591	0	0	479,780	NA
1967	513,255	0	50,971	0	0	564,226	NA
1968	604,462	0	47,423	NA	0	651,885	NA
1969	680,106	0	46,845	NA	0	726,951	NA
1970	778,687	NA	41,336	757	0	820,780	NA
1971	910,926	1,500	20,689	1,433	0	934,548	NA
1972	1,009,093	230	8,140	2,032	0	1,019,496	0.31
1973	1,027,216	667	1,632	3,388	0	1,032,901	0.35
1974	959,063	0	222	0	0	959,284	0.55
1975	948,115	0	0	4,893	0	953,008	1.21
1976	953,613	0	0	10,155	0	963,768	1.72
1977	996,723	572	2,384	11,324	0	1,011,002	1.98
1978	881,123	0	0	84,422	0	965,545	2.13
1979	1,000,775	0	0	252,608	0	1,253,383	2.49
1980	796,507	0	102,410	85,850	0	984,767	4.28
1981	762,107	6	105,013	36,824	0	903,949	4.88
1982	783,407	0	94,794	55,136	0	933,336	5.03
1983	711,923	0	75,361	131,124	0	918,407	4.78
1984	755,368	0	51,502	36,191	0	843,060	4.08
1985	926,056	0	0	23,659	0	949,715	3.21
1986	748,780	0	0	0	1,669	750,449	2.43
1987	992,532	0	0	0	0	992,532	1.95
1988	1,276,322	0	0	17,490	0	1,293,812	1.84
1989	1,339,357	0	0	42,163	0	1,381,520	1.82
1990	1,448,065	0	0	84,193	0	1,532,259	1.94
1991	1,709,716	0	0	63,596	0	1,773,313	1.83
1992	2,094,387	0	0	43,116	0	2,137,504	1.85
1993	2,266,751	0	1,678	81,685	0	2,350,115	2.03
1994	2,566,049	0	7,013	50,778	0	2,623,839	1.87
1995	2,816,408	0	6,722	17,918	0	2,841,048	1.49

<sup>a</sup> Volumes reported for 1966 through 1995 are on a pressure base of 14.73 pounds per square inch absolute and 60 degrees Fahrenheit. Volumes for 1955 through 1965 are as reported.

NA = Not available.

Notes: Totals may not equal sum of components due to independent rounding. Geographic coverage is the continental United States including Alaska.

Sources: 1955-1971: Federal Power Commission, informally collected by letter. 1972-1994: Energy Information Administration, Form FPC-14, "Annual Report for Importers and Exporters of Natural Gas". 1995: Office of Fossil Energy, U.S. Department of Energy, *Natural Gas Imports and Exports*.

**Table FE5. Historical Summary of U.S. Natural Gas Exports, 1955-1995**  
(Volume in Million Cubic Feet; Average Price in Dollars per Thousand Cubic Feet)

Year	Exports to Canada Pipeline	Exports to Mexico Pipeline	Exports to Japan LNG	Total Exports <sup>a</sup>	Average Price
1955	11,467	19,562	0	31,029	NA
1956	16,819	19,144	0	35,963	NA
1957	30,867	10,788	0	41,655	NA
1958	32,129	6,590	0	38,719	NA
1959	11,739	6,674	0	18,413	NA
1960	5,759	5,573	0	11,332	NA
1961	5,577	5,170	0	10,747	NA
1962	5,574	10,240	0	15,814	NA
1963	6,879	10,078	0	16,957	NA
1964	9,763	9,840	0	19,603	NA
1965	17,979	8,153	0	26,132	NA
1966	20,281	4,358	0	24,639	NA
1967	70,456	11,158	0	81,614	NA
1968	81,647	12,098	0	93,745	NA
1969	34,931	13,391	2,982	51,304	NA
1970	10,878	14,678	44,257	69,813	NA
1971	14,349	15,632	50,231	80,212	NA
1972	15,553	14,579	47,882	78,013	0.51
1973	14,824	13,999	48,346	77,169	0.54
1974	13,263	13,268	50,258	76,789	0.72
1975	10,219	9,454	53,002	72,675	1.25
1976	7,506	7,425	49,779	64,711	1.55
1977	31	3,940	51,655	55,626	1.92
1978	66	4,033	48,434	52,532	2.13
1979	76	4,308	51,289	55,673	2.29
1980	113	3,886	44,732	48,731	4.70
1981	106	3,337	55,929	59,372	5.90
1982	162	1,705	49,861	51,728	5.81
1983	136	1,646	52,857	54,639	5.10
1984	127	1,786	52,840	54,753	4.92
1985	178	2,207	52,883	55,268	4.77
1986	9,203	1,896	50,172	61,271	2.81
1987	3,297	2,125	48,599	54,020	3.07
1988	19,738	2,327	51,573	73,638	2.74
1989	38,443	17,004	51,424	106,871	2.51
1990	17,359	15,659	52,546	85,565	3.10
1991	14,791	60,448	54,005	129,244	2.59
1992	67,777	95,973	52,532	216,282	2.25
1993	44,518	39,676	55,989	140,183	2.59
1994	52,556	46,500	62,682	161,738	2.50
1995	27,554	61,283	65,283	154,119	2.39

<sup>a</sup> Volumes reported for 1966 through 1995 are on a pressure base of 14.73 pounds per square inch absolute and 60 degrees Fahrenheit. Volumes for 1955 through 1965 are as reported.

NA = Not available.

Notes: Totals may not equal sum of components due to independent rounding. Geographic coverage is the continental United States including Alaska.

Source: 1955-1971: Federal Power Commission, informally collected by letter. 1972-1994: Energy Information Administration, Form FPC-14, "Annual Report for Importers and Exporters of Natural Gas". 1995: Office of Fossil Energy, U.S. Department of Energy, *Natural Gas Imports and Exports*.

**Table FE6. U.S. Natural Gas Imports by Point of Entry, 1994-1995**  
 (Volume in Million Cubic Feet; Average Price in Dollars per Thousand Cubic Feet)

Year and Month	Canada (Pipeline)							
	Pacific Northwest		West		Midwest			
	Sumas, WA		Eastport, ID		Babb, MT		Detroit, MI	
	Volume	Average Price	Volume	Average Price	Volume	Average Price	Volume	Average Price
<b>1994</b>								
January .....	30,222	2.18	58,469	1.97	1,050	1.96	992	2.27
February .....	27,072	2.03	52,171	1.99	779	1.97	603	2.81
March .....	30,587	2.06	53,502	2.03	635	1.98	374	2.19
April .....	27,458	1.83	52,321	1.82	1,179	1.72	525	2.12
May .....	27,236	1.76	52,683	1.76	1,142	1.65	637	2.02
June .....	23,543	1.68	54,805	1.52	1,131	1.75	506	1.92
July .....	23,220	1.69	65,296	1.52	1,253	1.86	450	2.11
August .....	25,472	1.66	65,647	1.49	1,474	1.59	569	2.20
September .....	24,948	1.62	60,639	1.38	1,263	1.39	703	2.22
October .....	25,991	1.59	62,744	1.21	1,707	1.36	559	2.11
November .....	27,051	1.71	69,309	1.37	1,240	1.53	571	2.38
December .....	27,563	1.77	75,484	1.41	1,023	1.51	650	2.41
<b>Total .....</b>	<b>320,362</b>	<b>1.81</b>	<b>723,071</b>	<b>1.60</b>	<b>13,876</b>	<b>1.65</b>	<b>7,139</b>	<b>2.24</b>
<b>1995</b>								
January .....	26,116	1.55	77,522	1.12	940	1.49	1,238	2.41
February .....	27,604	1.39	67,201	0.92	859	1.37	1,120	2.09
March .....	29,771	1.24	72,514	0.88	1,502	1.22	1,149	2.13
April .....	31,919	1.13	68,477	0.85	1,449	1.22	1,028	1.82
May .....	26,820	1.16	68,123	0.95	884	1.27	1,049	1.98
June .....	23,164	1.19	68,015	0.95	824	1.19	1,124	2.01
July .....	23,334	1.14	63,468	0.88	834	1.21	1,047	1.83
August .....	24,640	1.08	68,658	0.81	1,503	1.14	828	1.82
September .....	26,418	1.15	65,655	0.88	719	1.35	1,009	1.85
October .....	31,914	1.15	67,733	0.96	668	1.33	1,010	1.98
November .....	31,166	1.30	64,660	1.01	1,397	1.09	1,258	2.04
December .....	33,000	1.30	71,451	1.08	1,496	1.10	1,377	2.36
<b>Total .....</b>	<b>335,866</b>	<b>1.23</b>	<b>823,478</b>	<b>0.94</b>	<b>13,075</b>	<b>1.23</b>	<b>13,236</b>	<b>2.05</b>

See footnotes at the end of table.

**Table FE6. U.S. Natural Gas Imports by Point of Entry, 1994-1995 (Continued)**  
 (Volume in Million Cubic Feet; Average Price in Dollars per Thousand Cubic Feet)

Year and Month	Canada (Pipeline)							
	Midwest							
	Harve, MT		International Falls, MN		Noyes, MN		Port of Del Bonita, MT	
	Volume	Average Price	Volume	Average Price	Volume	Average Price	Volume	Average Price
<b>1994</b>								
January .....	0	-	0	-	35,262	2.19	12	1.69
February .....	0	-	0	-	30,551	2.39	11	1.70
March .....	0	-	0	-	32,677	2.33	12	1.69
April .....	0	-	0	-	31,363	2.06	12	1.69
May .....	0	-	0	-	30,701	2.11	12	1.72
June .....	0	-	0	-	27,878	1.98	2	1.72
July .....	0	-	0	-	29,573	2.05	6	1.72
August .....	0	-	0	-	31,635	1.95	6	1.67
September .....	0	-	0	-	30,663	1.81	9	1.72
October .....	0	-	0	-	32,565	1.76	13	1.68
November .....	0	-	0	-	31,350	2.07	10	1.69
December .....	0	-	0	-	36,812	1.87	12	1.69
<b>Total .....</b>	<b>0</b>	<b>-</b>	<b>0</b>	<b>-</b>	<b>381,030</b>	<b>2.05</b>	<b>119</b>	<b>1.70</b>
<b>1995</b>								
January .....	0	-	581	2.18	35,891	1.85	6	1.39
February .....	0	-	574	2.05	35,956	1.65	7	1.39
March .....	0	-	582	2.02	34,991	1.66	12	1.39
April .....	0	-	524	2.18	32,382	1.74	10	1.39
May .....	0	-	411	2.53	31,754	1.82	8	1.39
June .....	0	-	399	2.56	31,896	1.87	3	1.39
July .....	1,362	0.81	419	2.28	33,088	1.72	3	1.39
August .....	1,526	0.76	378	2.31	33,108	1.66	0	-
September .....	69	0.79	378	2.43	33,375	1.76	0	-
October .....	0	-	464	2.21	29,500	1.81	0	-
November .....	0	-	527	1.51	33,138	1.87	8	1.39
December .....	0	-	503	1.62	35,105	2.16	8	1.39
<b>Total .....</b>	<b>2,958</b>	<b>0.78</b>	<b>5,740</b>	<b>2.13</b>	<b>400,184</b>	<b>1.80</b>	<b>65</b>	<b>1.39</b>

See footnotes at the end of table.

**Table FE6. U.S. Natural Gas Imports by Point of Entry, 1994-1995 (Continued)**  
 (Volume in Million Cubic Feet; Average Price in Dollars per Thousand Cubic Feet)

Year and Month	Canada (Pipeline)									
	Midwest									
	Port of Morgan, MT		Portal, ND		St Clair, MI		Sweetgrass, MT		Warroad, MN	
	Volume	Average Price	Volume	Average Price	Volume	Average Price	Volume	Average Price	Volume	Average Price
<b>1994</b>										
January .....	46,980	1.71	310	1.74	2,471	2.69	5	1.80	761	2.62
February .....	33,588	1.78	260	1.60	1,865	2.59	0	-	672	2.71
March .....	43,055	1.80	31	1.77	434	1.69	0	-	649	2.72
April .....	44,543	1.61	88	1.51	155	2.17	5	1.62	570	2.82
May .....	40,976	1.60	89	1.76	0	-	73	1.64	504	2.93
June .....	43,324	1.38	58	1.65	352	2.02	0	-	400	3.20
July .....	44,360	1.44	44	1.62	738	1.96	0	-	380	3.25
August .....	44,157	1.41	*	3.87	854	1.88	0	-	441	3.09
September .....	39,137	1.20	*	2.81	1,482	1.50	75	1.39	380	3.26
October .....	45,252	1.13	120	1.10	1,341	1.42	0	-	486	3.00
November .....	44,346	1.27	291	1.43	484	1.81	0	-	558	2.38
December .....	46,375	1.33	325	1.52	3	1.78	0	-	635	2.32
<b>Total .....</b>	<b>516,095</b>	<b>1.47</b>	<b>1,617</b>	<b>1.55</b>	<b>10,181</b>	<b>2.10</b>	<b>158</b>	<b>1.53</b>	<b>6,436</b>	<b>2.80</b>
<b>1995</b>										
January .....	48,554	1.28	197	1.21	2,979	1.55	0	-	83	2.36
February .....	41,670	1.10	155	0.95	3,138	1.72	0	-	79	2.38
March .....	47,127	1.03	191	0.93	854	1.85	0	-	61	2.51
April .....	46,130	1.10	212	0.95	64	1.64	0	-	190	2.24
May .....	46,032	1.17	363	1.04	28	1.71	0	-	168	2.34
June .....	43,571	1.16	290	1.03	316	1.70	0	-	152	2.44
July .....	45,537	1.09	593	0.92	2,547	1.66	0	-	13	4.66
August .....	47,776	1.07	571	0.77	1,710	1.46	0	-	13	4.80
September .....	44,368	1.23	517	0.86	200	1.59	0	-	21	3.67
October .....	47,052	1.32	498	0.87	0	-	0	-	26	2.77
November .....	39,832	1.41	574	1.12	180	2.15	0	-	68	1.41
December .....	49,319	1.72	399	1.17	1,224	2.91	0	-	85	1.75
<b>Total .....</b>	<b>546,969</b>	<b>1.23</b>	<b>4,559</b>	<b>0.97</b>	<b>13,239</b>	<b>1.76</b>	<b>0</b>	<b>-</b>	<b>959</b>	<b>2.34</b>

See footnotes at the end of table.

**Table FE6. U.S. Natural Gas Imports by Point of Entry, 1994-1995 (Continued)**  
 (Volume in Million Cubic Feet; Average Price in Dollars per Thousand Cubic Feet)

Year and Month	Canada (Pipeline)									
	Midwest				Northeast					
	Withlash, MT		Total		Champlain, NY		Grand Island, NY		Highgate Springs, VT	
	Volume	Average Price	Volume	Average Price	Volume	Average Price	Volume	Average Price	Volume	Average Price
<b>1994</b>										
January .....	688	1.45	88,531	1.95	94	8.42	1,330	2.80	1,181	2.86
February .....	628	1.41	68,958	2.09	120	7.17	1,247	2.71	974	2.99
March .....	677	1.39	78,545	2.03	136	6.79	1,107	2.67	862	2.98
April .....	542	1.37	78,982	1.80	99	11.55	1,061	2.69	602	3.32
May .....	412	1.25	74,547	1.82	431	4.74	1,026	2.58	405	3.83
June .....	7	1.44	73,657	1.63	1,243	3.24	1,070	2.53	319	4.33
July .....	62	1.47	76,867	1.70	1,542	3.08	915	2.45	282	4.77
August .....	220	1.43	79,357	1.65	1,565	3.08	831	2.57	292	4.83
September .....	411	1.46	74,123	1.48	989	3.53	1,071	2.41	356	4.34
October .....	628	1.42	82,672	1.41	1,354	3.23	1,684	2.16	478	3.68
November .....	651	1.40	79,501	1.61	1,458	3.21	1,631	2.53	637	2.69
December .....	682	1.38	86,518	1.58	1,371	3.19	2,239	2.29	915	2.39
<b>Total .....</b>	<b>5,608</b>	<b>1.40</b>	<b>942,258</b>	<b>1.73</b>	<b>10,401</b>	<b>3.49</b>	<b>15,212</b>	<b>2.51</b>	<b>7,303</b>	<b>3.25</b>
<b>1995</b>										
January .....	643	1.41	91,111	1.54	1,468	3.14	3,470	2.30	972	2.30
February .....	681	1.35	84,239	1.38	1,317	3.15	3,582	2.24	982	2.13
March .....	678	1.42	87,146	1.32	1,463	3.14	4,561	2.04	805	2.18
April .....	431	1.45	82,420	1.38	1,268	3.15	3,061	2.27	662	2.22
May .....	455	1.46	81,152	1.45	1,418	3.15	2,944	2.37	394	3.08
June .....	407	1.45	78,982	1.47	1,453	3.15	3,639	2.31	290	3.73
July .....	452	1.45	85,896	1.36	1,427	3.15	4,302	2.09	275	3.95
August .....	392	1.45	87,806	1.31	1,461	3.15	4,250	2.01	277	3.86
September .....	825	1.22	81,480	1.46	1,424	3.15	4,106	2.17	298	3.58
October .....	1,049	1.24	80,269	1.51	1,452	3.15	4,069	2.22	442	3.23
November .....	642	1.44	77,622	1.61	1,157	3.27	5,858	2.29	820	2.14
December .....	675	1.43	90,191	1.90	1,422	3.27	6,777	2.62	1,201	1.98
<b>Total .....</b>	<b>7,330</b>	<b>1.38</b>	<b>1,008,314</b>	<b>1.48</b>	<b>16,728</b>	<b>3.17</b>	<b>50,619</b>	<b>2.26</b>	<b>7,417</b>	<b>2.51</b>

See footnotes at the end of table.

**Table FE6. U.S. Natural Gas Imports by Point of Entry, 1994-1995 (Continued)**  
 (Volume in Million Cubic Feet; Average Price in Dollars per Thousand Cubic Feet)

Year and Month	Canada (Pipeline)							
	Northeast							
	Massena, NY		Niagara Falls, NY		North Troy, VT		Waddington, NY	
	Volume	Average Price	Volume	Average Price	Volume	Average Price	Volume	Average Price
<b>1994</b>								
January .....	1,665	2.98	22,797	2.64	906	1.42	24,012	2.43
February .....	1,618	2.93	20,309	2.79	838	1.66	19,720	2.82
March .....	1,695	2.86	22,310	2.70	911	1.38	23,441	2.84
April .....	1,413	2.77	20,956	2.53	843	1.27	20,378	2.33
May .....	1,170	2.90	21,007	2.49	890	1.36	19,972	2.27
June .....	1,012	2.91	18,989	2.44	1,135	1.43	18,686	2.20
July .....	1,164	2.76	22,211	2.47	941	1.45	21,047	2.31
August .....	1,184	2.81	21,678	2.42	949	1.38	21,907	2.23
September .....	1,099	2.88	22,629	2.27	824	1.22	20,817	2.11
October .....	1,125	2.90	24,044	2.15	826	1.24	20,709	1.97
November .....	1,398	2.87	22,593	2.30	813	1.34	21,426	2.31
December .....	1,744	2.67	23,349	2.30	913	1.39	25,381	2.29
<b>Total .....</b>	<b>16,287</b>	<b>2.85</b>	<b>262,872</b>	<b>2.45</b>	<b>10,789</b>	<b>1.38</b>	<b>257,494</b>	<b>2.35</b>
<b>1995</b>								
January .....	1,783	2.97	23,392	2.32	979	2.42	23,853	2.29
February .....	2,029	2.52	22,259	2.24	951	2.45	23,241	2.20
March .....	1,810	2.55	23,146	2.20	990	2.36	25,373	2.15
April .....	1,463	2.51	20,261	2.24	871	2.58	21,342	2.12
May .....	1,234	2.86	19,876	2.34	932	2.58	22,791	2.18
June .....	1,305	2.83	18,793	2.33	657	3.06	21,158	2.24
July .....	1,115	2.90	21,099	2.25	903	2.45	20,834	2.14
August .....	1,097	2.88	22,016	2.15	946	2.47	22,268	2.04
September .....	1,201	2.80	20,946	2.22	928	2.53	21,381	2.11
October .....	1,279	2.68	23,545	2.24	962	2.50	22,619	2.18
November .....	1,596	2.65	25,453	2.38	931	2.60	24,595	2.35
December .....	1,809	2.63	29,142	2.66	962	2.81	25,873	2.65
<b>Total .....</b>	<b>17,720</b>	<b>2.71</b>	<b>269,928</b>	<b>2.31</b>	<b>11,012</b>	<b>2.55</b>	<b>275,326</b>	<b>2.23</b>

See footnotes at the end of table.



**Table FE6. U.S. Natural Gas Imports by Point of Entry, 1994-1995 (Continued)**  
 (Volume in Million Cubic Feet; Average Price in Dollars per Thousand Cubic Feet)

Year and Month	Canada (Pipeline)				Mexico (Pipeline)					
	Northeast		Total		Texas				Total	
	Total				Hidalgo, TX		Penitas, TX			
	Volume	Average Price	Volume	Average Price	Volume	Average Price	Volume	Average Price	Volume	Average Price
<b>1994</b>										
January .....	51,984	2.55	229,206	2.12	1,539	1.79	0	-	1,539	1.79
February .....	44,825	2.80	193,027	2.22	569	2.15	0	-	569	2.15
March .....	50,462	2.76	213,096	2.21	2,147	2.19	0	-	2,147	2.19
April .....	45,351	2.46	204,113	1.96	0	-	0	-	0	-
May .....	44,901	2.41	199,367	1.93	1,663	2.02	0	-	1,663	2.02
June .....	42,454	2.36	194,458	1.76	1,094	1.77	0	-	1,094	1.77
July .....	48,102	2.42	213,486	1.81	0	-	0	-	0	-
August .....	48,404	2.36	218,879	1.76	0	-	0	-	0	-
September .....	47,785	2.24	207,495	1.64	0	-	0	-	0	-
October .....	50,220	2.12	221,627	1.54	0	-	0	-	0	-
November .....	49,958	2.34	225,819	1.71	0	-	0	-	0	-
December .....	55,911	2.32	245,477	1.72	0	-	0	-	0	-
<b>Total .....</b>	<b>580,358</b>	<b>2.43</b>	<b>2,566,049</b>	<b>1.86</b>	<b>7,013</b>	<b>1.99</b>	<b>0</b>	<b>-</b>	<b>7,013</b>	<b>1.99</b>
<b>1995</b>										
January .....	55,917	2.35	250,666	1.59	0	-	158	1.38	158	1.38
February .....	54,360	2.26	233,404	1.45	0	-	0	-	0	-
March .....	58,147	2.20	247,578	1.39	150	1.50	0	-	150	1.50
April .....	48,929	2.23	231,745	1.37	0	-	0	-	0	-
May .....	49,588	2.31	225,682	1.45	0	-	0	-	0	-
June .....	47,295	2.34	217,456	1.47	0	-	0	-	0	-
July .....	49,955	2.24	222,652	1.40	0	-	0	-	0	-
August .....	52,314	2.15	233,419	1.33	824	1.53	0	-	824	1.53
September .....	50,284	2.22	223,836	1.43	3,872	1.53	0	-	3,872	1.53
October .....	54,368	2.26	234,284	1.48	1,095	1.57	623	1.54	1,718	1.56
November .....	60,408	2.38	233,857	1.60	0	-	0	-	0	-
December .....	67,185	2.65	261,828	1.79	0	-	0	-	0	-
<b>Total .....</b>	<b>648,750</b>	<b>2.31</b>	<b>2,816,408</b>	<b>1.48</b>	<b>5,941</b>	<b>1.53</b>	<b>781</b>	<b>1.51</b>	<b>6,722</b>	<b>1.53</b>

See footnotes at the end of table.

**Table FE6. U.S. Natural Gas Imports by Point of Entry, 1994-1995 (Continued)**  
 (Volume in Million Cubic Feet; Average Price in Dollars per Thousand Cubic Feet)

Year and Month	Algeria (LNG)						Total	
	Everett, MA		Lake Charles, LA		Total			
	Volume	Average Price	Volume	Average Price	Volume	Average Price	Volume	Average Price
<b>1994</b>								
January .....	5,046	2.35	5,103	1.70	10,150	2.02	240,895	2.11
February .....	5,065	3.13	0	-	5,065	3.13	198,661	2.24
March .....	5,081	2.70	2,535	1.74	7,616	2.38	222,858	2.21
April .....	2,466	2.42	5,170	1.68	7,636	1.92	211,749	1.96
May .....	5,101	2.40	0	-	5,101	2.40	206,131	1.94
June .....	2,491	2.35	2,538	1.75	5,029	2.04	200,582	1.77
July .....	5,139	2.40	2,541	1.74	7,680	2.18	221,166	1.82
August .....	0	-	0	-	0	-	218,879	1.76
September .....	2,501	2.94	0	-	2,501	2.94	209,996	1.66
October .....	0	-	0	-	0	-	221,627	1.54
November .....	0	-	0	-	0	-	225,819	1.71
December .....	0	-	0	-	0	-	245,477	1.72
<b>Total .....</b>	<b>32,891</b>	<b>2.59</b>	<b>17,887</b>	<b>1.71</b>	<b>50,778</b>	<b>2.28</b>	<b>2,623,839</b>	<b>1.87</b>
<b>1995</b>								
January .....	2,511	2.40	0	-	2,511	2.40	253,335	1.60
February .....	0	-	2,573	1.81	2,573	1.81	235,977	1.46
March .....	2,621	2.45	0	-	2,621	2.45	250,349	1.40
April .....	0	-	0	-	0	-	231,745	1.37
May .....	0	-	2,576	1.89	2,576	1.89	228,259	1.46
June .....	0	-	0	-	0	-	217,456	1.47
July .....	0	-	0	-	0	-	222,652	1.40
August .....	2,648	2.42	0	-	2,648	2.42	236,891	1.34
September .....	0	-	0	-	0	-	227,708	1.43
October .....	0	-	0	-	0	-	236,003	1.48
November .....	2,487	2.47	0	-	2,487	2.47	236,344	1.61
December .....	2,502	2.65	0	-	2,502	2.65	264,329	1.80
<b>Total .....</b>	<b>12,769</b>	<b>2.48</b>	<b>5,149</b>	<b>1.85</b>	<b>17,918</b>	<b>2.30</b>	<b>2,841,048</b>	<b>1.49</b>

- = Not applicable.

\* = Less than 500,000 cubic feet.

Notes: Totals may not equal sum of components due to independent rounding. Geographic coverage is the continental United States including Alaska.

Sources: 1994: Energy Information Administration, Form FPC-14, "Annual Report for Importers and Exporters of Natural Gas". 1995: Office of Fossil Energy, U.S. Department of Energy, *Natural Gas Imports and Exports*.

**Table FE7. Summary of U.S. Natural Gas Imports, 1977-1995**  
 (Volume in Million Cubic Feet; Average Price in Dollars per Thousand Cubic Feet)

Year and Month	Pipeline				Total Pipeline	
	Canada		Mexico		Volume	Average Price
	Volume	Average Price	Volume	Average Price		
<b>1977 Total</b> .....	996,722	1.99	2,384	2.25	999,106	1.99
<b>1978 Total</b> .....	881,123	2.19	0	-	881,123	2.19
<b>1979 Total</b> .....	1,000,775	2.61	0	-	1,000,775	2.61
<b>1980 Total</b> .....	796,507	4.32	102,410	4.41	898,917	4.33
<b>1981 Total</b> .....	762,107	4.83	105,013	5.01	867,120	4.85
<b>1982 Total</b> .....	783,407	4.97	94,794	5.02	878,200	4.98
<b>1983 Total</b> .....	711,923	4.49	75,361	4.70	787,284	4.51
<b>1984 Total</b> .....	755,368	4.01	51,502	4.49	806,870	4.04
<b>1985 Total</b> .....	926,056	3.17	0	-	926,056	3.17
<b>1986 Total</b> .....	748,780	2.42	0	-	748,780	2.42
<b>1987 Total</b> .....	992,532	1.95	0	-	992,532	1.95
<b>1988 Total</b> .....	1,276,322	1.83	0	-	1,276,322	1.83
<b>1989 Total</b> .....	1,339,357	1.81	0	-	1,339,357	1.81
<b>1990 Total</b> .....	1,448,065	1.91	0	-	1,448,065	1.91
<b>1991 Total</b> .....	1,709,716	1.81	0	-	1,709,716	1.81
<b>1992 Total</b> .....	2,094,387	1.84	0	-	2,094,387	1.84
<b>1993 Total</b> .....	2,266,751	2.02	1,678	1.94	2,268,429	2.02
<b>1994</b>						
January .....	229,206	2.12	1,539	1.79	230,745	2.12
February .....	193,027	2.22	569	2.15	193,596	2.22
March .....	213,096	2.21	2,147	2.19	215,243	2.21
April .....	204,113	1.96	0	-	204,113	1.96
May .....	199,367	1.93	1,663	2.02	201,031	1.93
June .....	194,458	1.76	1,094	1.77	195,553	1.76
July .....	213,486	1.81	0	-	213,486	1.81
August .....	218,879	1.76	0	-	218,879	1.76
September .....	207,495	1.64	0	-	207,495	1.64
October .....	221,627	1.54	0	-	221,627	1.54
November .....	225,819	1.71	0	-	225,819	1.71
December .....	245,477	1.72	0	-	245,477	1.72
<b>Total</b> .....	2,566,049	1.86	7,013	1.99	2,573,061	1.86
<b>1995</b>						
January .....	250,666	1.59	158	1.38	250,824	1.59
February .....	233,404	1.45	0	-	233,404	1.45
March .....	247,578	1.39	150	1.50	247,728	1.39
April .....	231,745	1.37	0	-	231,745	1.37
May .....	225,682	1.45	0	-	225,682	1.45
June .....	217,456	1.47	0	-	217,456	1.47
July .....	222,652	1.40	0	-	222,652	1.40
August .....	233,419	1.33	824	1.53	234,242	1.33
September .....	223,836	1.43	3,872	1.53	227,708	1.43
October .....	234,284	1.48	1,718	1.56	236,003	1.48
November .....	233,857	1.60	0	-	233,857	1.60
December .....	261,828	1.79	0	-	261,828	1.79
<b>Total</b> .....	2,816,408	1.48	6,722	1.53	2,823,130	1.48

See footnotes at the end of table.

**Table FE7. Summary of U.S. Natural Gas Imports, 1977-1995 (Continued)**  
 (Volume in Million Cubic Feet; Average Price in Dollars per Thousand Cubic Feet)

Year and Month	LNG						Grand Total	
	Algeria		Canada		Indonesia		Volume	Average Price
	Volume	Average Price	Volume	Average Price	Volume	Average Price		
<b>1977 Total</b> .....	11,324	0.92	572	3.96	0	-	1,011,002	1.98
<b>1978 Total</b> .....	84,422	1.53	0	-	0	-	965,545	2.13
<b>1979 Total</b> .....	252,608	2.03	0	-	0	-	1,253,383	2.49
<b>1980 Total</b> .....	85,850	3.77	0	-	0	-	984,767	4.28
<b>1981 Total</b> .....	36,824	5.54	6	6.63	0	-	903,949	4.88
<b>1982 Total</b> .....	55,136	5.82	0	-	0	-	933,336	5.03
<b>1983 Total</b> .....	131,124	6.41	0	-	0	-	918,407	4.78
<b>1984 Total</b> .....	36,191	4.90	0	-	0	-	843,060	4.08
<b>1985 Total</b> .....	23,659	4.60	0	-	0	-	949,715	3.21
<b>1986 Total</b> .....	0	-	0	-	1,669	4.62	750,449	2.43
<b>1987 Total</b> .....	0	-	0	-	0	-	992,532	1.95
<b>1988 Total</b> .....	17,490	2.71	0	-	0	-	1,293,812	1.84
<b>1989 Total</b> .....	42,163	2.22	0	-	0	-	1,381,520	1.82
<b>1990 Total</b> .....	84,193	2.47	0	-	0	-	1,532,259	1.94
<b>1991 Total</b> .....	63,596	2.36	0	-	0	-	1,773,313	1.83
<b>1992 Total</b> .....	43,116	2.54	0	-	0	-	2,137,504	1.85
<b>1993 Total</b> .....	81,685	2.20	0	-	0	-	2,350,115	2.03
<b>1994</b>								
January .....	10,150	2.02	0	-	0	-	240,895	2.11
February .....	5,065	3.13	0	-	0	-	198,661	2.24
March .....	7,616	2.38	0	-	0	-	222,858	2.21
April .....	7,636	1.92	0	-	0	-	211,749	1.96
May .....	5,101	2.40	0	-	0	-	206,131	1.94
June .....	5,029	2.04	0	-	0	-	200,582	1.77
July .....	7,680	2.18	0	-	0	-	221,166	1.82
August .....	0	-	0	-	0	-	218,879	1.76
September .....	2,501	2.94	0	-	0	-	209,996	1.66
October .....	0	-	0	-	0	-	221,627	1.54
November .....	0	-	0	-	0	-	225,819	1.71
December .....	0	-	0	-	0	-	245,477	1.72
<b>Total</b> .....	50,778	2.28	0	-	0	-	2,623,839	1.87
<b>1995</b>								
January .....	2,511	2.40	0	-	0	-	253,335	1.60
February .....	2,573	1.81	0	-	0	-	235,977	1.46
March .....	2,621	2.45	0	-	0	-	250,349	1.40
April .....	0	-	0	-	0	-	231,745	1.37
May .....	2,576	1.89	0	-	0	-	228,259	1.46
June .....	0	-	0	-	0	-	217,456	1.47
July .....	0	-	0	-	0	-	222,652	1.40
August .....	2,648	2.42	0	-	0	-	236,891	1.34
September .....	0	-	0	-	0	-	227,708	1.43
October .....	0	-	0	-	0	-	236,003	1.48
November .....	2,487	2.47	0	-	0	-	236,344	1.61
December .....	2,502	2.65	0	-	0	-	264,329	1.80
<b>Total</b> .....	17,918	2.30	0	-	0	-	2,841,048	1.49

- = Not applicable.

Notes: Totals may not equal sum of components due to independent rounding. Geographic coverage is the continental United States including Alaska.

Sources: 1994 and Earlier Years: Energy Information Administration, Form FPC-14, "Annual Report for Importers and Exporters of Natural Gas". 1995: Office of Fossil Energy, U.S. Department of Energy, *Natural Gas Imports and Exports*.

**Table FE8. U.S. Natural Gas Exports by Point of Exit, 1994-1995**  
 (Volume in Million Cubic Feet; Average Price in Dollars per Thousand Cubic Feet)

Year and Month	Canada (Pipeline)							
	Sumas, WA		Detroit, MI		Harve, MT		St Clair, MI	
	Volume	Average Price	Volume	Average Price	Volume	Average Price	Volume	Average Price
<b>1994</b>								
January .....	0	-	1,240	2.66	133	1.96	2,712	2.31
February .....	0	-	4,420	2.84	110	1.78	3,279	2.66
March .....	0	-	6,982	2.82	485	1.65	4,812	2.72
April .....	0	-	1,795	2.28	718	1.49	1,359	2.47
May .....	0	-	1,843	2.33	628	1.43	469	2.77
June .....	0	-	2,815	2.24	177	1.36	2,784	2.25
July .....	0	-	2,000	2.26	114	1.35	709	2.66
August .....	0	-	620	2.58	170	1.28	469	2.73
September .....	0	-	1,132	2.35	98	1.03	454	2.81
October .....	0	-	976	2.32	146	1.05	469	2.80
November .....	0	-	1,220	2.39	141	1.23	3,085	1.92
December .....	0	-	2,568	2.26	168	0.90	1,260	1.89
<b>Total .....</b>	<b>0</b>	<b>-</b>	<b>27,610</b>	<b>2.53</b>	<b>3,087</b>	<b>1.43</b>	<b>21,859</b>	<b>2.43</b>
<b>1995</b>								
January .....	422	1.47	1,129	2.05	0	-	967	2.15
February .....	183	1.09	1,002	2.07	0	-	831	2.17
March .....	0	-	204	1.43	0	-	2,183	1.97
April .....	0	-	1,052	1.67	0	-	1,405	1.96
May .....	0	-	1,094	1.87	0	-	837	2.19
June .....	0	-	842	1.55	0	-	1,264	2.15
July .....	0	-	1,605	1.62	0	-	842	2.19
August .....	0	-	1,288	1.60	0	-	1,270	1.94
September .....	0	-	1,114	2.33	0	-	2,222	1.88
October .....	0	-	1,350	1.81	0	-	1,579	1.99
November .....	0	-	302	2.03	0	-	1,325	2.25
December .....	0	-	0	-	0	-	1,244	2.43
<b>Total .....</b>	<b>605</b>	<b>1.36</b>	<b>10,980</b>	<b>1.83</b>	<b>0</b>	<b>-</b>	<b>15,968</b>	<b>2.07</b>

See footnotes at the end of table.

**Table FE8. U.S. Natural Gas Exports by Point of Exit, 1994-1995 (Continued)**  
 (Volume in Million Cubic Feet; Average Price in Dollars per Thousand Cubic Feet)

Year and Month	Canada (Pipeline)				Mexico (Pipeline)					
	Sweetgrass, MT		Total		Douglas, AZ		Eagle Pass, TX		El Paso, TX	
	Volume	Average Price	Volume	Average Price	Volume	Average Price	Volume	Average Price	Volume	Average Price
<b>1994</b>										
January .....	0	-	4,084	2.41	152	2.04	82	2.50	1,312	2.22
February .....	*	2.50	7,809	2.75	502	2.00	70	2.69	117	2.59
March .....	0	-	12,279	2.73	169	2.00	185	2.20	619	2.23
April .....	0	-	3,872	2.20	139	1.72	53	2.35	802	1.94
May .....	0	-	2,940	2.21	79	1.68	56	2.56	622	1.98
June .....	0	-	5,775	2.22	102	1.45	49	2.20	527	1.68
July .....	0	-	2,823	2.32	72	1.67	45	2.50	473	1.88
August .....	0	-	1,259	2.46	243	1.71	49	2.22	1,705	1.83
September .....	0	-	1,684	2.40	436	1.55	47	1.93	1,522	1.63
October .....	0	-	1,591	2.35	153	1.25	50	1.82	1,222	1.38
November .....	0	-	4,446	2.03	176	1.55	364	1.72	1,402	1.70
December .....	0	-	3,995	2.09	236	1.70	73	2.06	1,635	1.85
<b>Total .....</b>	<b>*</b>	<b>2.50</b>	<b>52,556</b>	<b>2.42</b>	<b>2,459</b>	<b>1.73</b>	<b>1,125</b>	<b>2.10</b>	<b>11,958</b>	<b>1.83</b>
<b>1995</b>										
January .....	0	-	2,518	2.00	0	-	0	-	1,511	1.63
February .....	0	-	2,016	2.02	0	-	0	-	1,272	1.32
March .....	0	-	2,387	1.92	0	-	0	-	1,551	1.31
April .....	0	-	2,457	1.84	0	-	0	-	1,219	1.42
May .....	0	-	1,931	2.01	0	-	0	-	1,182	1.46
June .....	0	-	2,106	1.91	0	-	0	-	2,166	1.51
July .....	0	-	2,446	1.82	0	-	0	-	2,095	1.33
August .....	0	-	2,558	1.77	0	-	0	-	1,365	1.31
September .....	0	-	3,336	2.03	0	-	0	-	1,142	1.48
October .....	0	-	2,929	1.91	0	-	0	-	1,211	1.51
November .....	0	-	1,627	2.21	0	-	0	-	1,176	1.59
December .....	0	-	1,244	2.43	42	1.53	0	-	1,168	1.80
<b>Total .....</b>	<b>0</b>	<b>-</b>	<b>27,554</b>	<b>1.96</b>	<b>42</b>	<b>1.53</b>	<b>0</b>	<b>-</b>	<b>17,059</b>	<b>1.46</b>

See footnotes at the end of table.

**Table FE8. U.S. Natural Gas Exports by Point of Exit, 1994-1995 (Continued)**  
 (Volume in Million Cubic Feet; Average Price in Dollars per Thousand Cubic Feet)

Year and Month	Mexico (Pipeline)						Japan (LNG)		Total	
	Hidalgo, TX		Penitas, TX		Total		Port Nikiski, AK			
	Volume	Average Price	Volume	Average Price	Volume	Average Price	Volume	Average Price	Volume	Average Price
<b>1994</b>										
January .....	0	-	0	-	1,546	2.22	5,466	3.08	11,097	2.71
February .....	534	2.05	236	2.00	1,459	2.10	3,630	2.99	12,898	2.74
March .....	24	1.90	370	1.93	1,367	2.11	5,510	2.92	19,156	2.74
April .....	0	-	417	1.84	1,411	1.91	3,676	2.92	8,959	2.45
May .....	116	1.93	956	1.88	1,829	1.93	3,692	2.95	8,462	2.47
June .....	0	-	599	1.69	1,278	1.68	5,543	3.02	12,596	2.52
July .....	348	1.80	1,330	1.80	2,268	1.82	5,557	3.15	10,647	2.65
August .....	985	1.66	3,999	1.67	6,981	1.71	5,561	3.29	13,801	2.42
September .....	2,382	1.53	2,599	1.53	6,987	1.56	5,565	3.39	14,236	2.37
October .....	666	1.51	3,568	1.33	5,659	1.37	5,555	3.41	12,805	2.38
November .....	3,218	1.63	4,238	1.55	9,398	1.61	5,540	3.37	19,384	2.21
December .....	2,001	1.64	2,373	1.58	6,317	1.68	7,386	3.35	17,698	2.47
<b>Total .....</b>	<b>10,273</b>	<b>1.63</b>	<b>20,685</b>	<b>1.59</b>	<b>46,500</b>	<b>1.68</b>	<b>62,682</b>	<b>3.18</b>	<b>161,738</b>	<b>2.50</b>
<b>1995</b>										
January .....	810	1.46	3,255	1.51	5,576	1.54	5,541	3.35	13,635	2.36
February .....	458	1.40	3,812	1.31	5,542	1.32	5,557	3.38	13,115	2.30
March .....	1,493	1.45	3,627	1.34	6,670	1.36	5,573	3.39	14,630	2.22
April .....	2,169	1.57	2,553	1.46	5,941	1.49	3,741	3.47	12,138	2.17
May .....	1,834	1.65	3,833	1.58	6,848	1.58	3,698	3.54	12,477	2.23
June .....	945	1.65	4,833	1.61	7,945	1.59	5,556	3.59	15,606	2.34
July .....	896	1.42	3,535	1.42	6,526	1.39	5,581	3.58	14,552	2.30
August .....	0	-	2,066	1.28	3,431	1.29	7,531	3.47	13,520	2.60
September .....	0	-	1,236	1.46	2,378	1.47	5,656	3.36	11,370	2.58
October .....	2,705	1.69	1,672	1.63	5,588	1.63	3,733	3.30	12,250	2.21
November .....	179	1.82	2,179	1.67	3,535	1.65	7,518	3.29	12,679	2.69
December .....	0	-	93	2.28	1,303	1.82	5,599	3.31	8,146	2.94
<b>Total .....</b>	<b>11,488</b>	<b>1.58</b>	<b>32,694</b>	<b>1.48</b>	<b>61,283</b>	<b>1.50</b>	<b>65,283</b>	<b>3.41</b>	<b>154,119</b>	<b>2.39</b>

- = Not applicable.

= Less than 500,000 cubic feet.

Notes: Totals may not equal sum of components due to independent rounding. Geographic coverage is the continental United States including Alaska.

Sources: 1994: Energy Information Administration, Form FPC-14, "Annual Report for Importers and Exporters of Natural Gas". 1995: Office of Fossil Energy, U.S. Department of Energy, *Natural Gas Imports and Exports*.

**Table FE9. Summary of U.S. Natural Gas Exports, 1977-1995**  
(Volume in Million Cubic Feet; Average Price in Dollars per Thousand Cubic Feet)

Year and Month	Pipeline				Total Pipeline		LNG		Grand Total	
	Canada		Mexico		Volume	Average Price	Japan		Volume	Average Price
	Volume	Average Price	Volume	Average Price			Volume	Average Price		
<b>1977 Total</b> .....	31	1.54	3,940	1.41	3,971	1.41	51,655	1.96	55,626	1.92
<b>1978 Total</b> .....	66	1.79	4,003	1.65	4,098	1.66	48,434	2.17	52,532	2.13
<b>1979 Total</b> .....	76	2.04	4,308	1.97	4,384	1.97	51,289	2.32	55,673	2.29
<b>1980 Total</b> .....	113	3.31	3,886	2.47	3,999	2.50	44,732	4.90	48,731	4.70
<b>1981 Total</b> .....	106	4.79	3,337	3.37	3,443	3.41	55,929	6.05	59,372	5.90
<b>1982 Total</b> .....	162	4.95	1,705	5.17	1,867	5.15	49,861	5.83	51,728	5.81
<b>1983 Total</b> .....	136	4.60	1,646	4.79	1,782	4.78	52,857	5.11	54,639	5.10
<b>1984 Total</b> .....	127	4.19	1,786	4.48	1,913	4.46	52,840	4.93	54,753	4.83
<b>1985 Total</b> .....	178	3.06	2,207	3.99	2,385	3.92	52,883	4.81	55,268	4.77
<b>1986 Total</b> .....	9,203	2.12	1,896	3.49	11,099	2.35	50,172	2.91	61,271	2.81
<b>1987 Total</b> .....	3,297	1.81	2,125	3.18	5,421	2.35	48,599	3.15	54,020	3.07
<b>1988 Total</b> .....	19,738	2.02	2,327	3.21	22,065	2.14	51,573	2.99	73,638	2.74
<b>1989 Total</b> .....	38,443	2.00	17,004	2.14	55,447	2.05	51,424	3.01	106,871	2.51
<b>1990 Total</b> .....	17,359	2.70	15,659	1.88	33,018	2.31	52,546	3.59	85,565	3.10
<b>1991 Total</b> .....	14,791	1.91	60,448	1.76	75,239	1.79	54,005	3.71	129,244	2.59
<b>1992 Total</b> .....	67,777	1.83	95,973	1.90	163,750	1.88	52,532	3.43	216,282	2.25
<b>1993 Total</b> .....	44,518	2.14	39,676	2.02	84,195	2.08	55,989	3.34	140,183	2.59
<b>1994</b>										
January .....	4,084	2.41	1,546	2.22	5,630	2.35	5,466	3.08	11,097	2.71
February .....	7,809	2.75	1,459	2.10	9,268	2.64	3,630	2.99	12,898	2.74
March .....	12,279	2.73	1,367	2.11	13,646	2.67	5,510	2.92	19,156	2.74
April .....	3,872	2.20	1,411	1.91	5,283	2.12	3,676	2.92	8,959	2.45
May .....	2,940	2.21	1,829	1.93	4,769	2.10	3,692	2.95	8,462	2.47
June .....	5,775	2.22	1,278	1.68	7,053	2.12	5,543	3.02	12,596	2.52
July .....	2,823	2.32	2,268	1.82	5,091	2.10	5,557	3.15	10,647	2.65
August .....	1,259	2.46	6,981	1.71	8,240	1.83	5,561	3.29	13,801	2.42
September .....	1,684	2.40	6,987	1.56	8,671	1.72	5,565	3.39	14,236	2.37
October .....	1,591	2.35	5,659	1.37	7,250	1.58	5,555	3.41	12,805	2.38
November .....	4,446	2.03	9,398	1.61	13,844	1.74	5,540	3.37	19,384	2.21
December .....	3,995	2.09	6,317	1.68	10,313	1.84	7,386	3.35	17,698	2.47
<b>Total</b> .....	52,556	2.42	46,500	1.68	99,057	2.08	62,682	3.18	161,738	2.50
<b>1995</b>										
January .....	2,518	2.00	5,576	1.54	8,094	1.68	5,541	3.35	13,635	2.36
February .....	2,016	2.02	5,542	1.32	7,558	1.51	5,557	3.38	13,115	2.30
March .....	2,387	1.92	6,670	1.36	9,057	1.51	5,573	3.39	14,630	2.22
April .....	2,457	1.84	5,941	1.49	8,397	1.59	3,741	3.47	12,138	2.17
May .....	1,931	2.01	6,848	1.58	8,779	1.67	3,698	3.54	12,477	2.23
June .....	2,106	1.91	7,945	1.59	10,051	1.66	5,556	3.59	15,606	2.34
July .....	2,446	1.82	6,526	1.39	8,972	1.51	5,581	3.58	14,552	2.30
August .....	2,558	1.77	3,431	1.29	5,989	1.49	7,531	3.47	13,520	2.60
September .....	3,336	2.03	2,378	1.47	5,714	1.80	5,656	3.36	11,370	2.58
October .....	2,929	1.91	5,588	1.63	8,517	1.73	3,733	3.30	12,250	2.21
November .....	1,627	2.21	3,535	1.65	5,161	1.82	7,518	3.29	12,679	2.69
December .....	1,244	2.43	1,303	1.82	2,547	2.12	5,599	3.31	8,146	2.94
<b>Total</b> .....	27,554	1.96	61,283	1.50	88,836	1.64	65,283	3.41	154,119	2.39

Notes: Totals may not equal sum of components due to independent rounding. Geographic coverage is the continental United States including Alaska.

Sources: 1994 and Earlier Years: Energy Information Administration, Form FPC-14, "Annual Report for Importers and Exporters of Natural Gas". 1995: Office of Fossil Energy, U.S. Department of Energy, *Natural Gas Imports and Exports*.