

American Association of State Highway and Transportation Officials

Painting the Safety Picture



U.S. Department
of Transportation

Federal Highway
Administration

Jeffrey Runge, Administrator, NHTSA

Annette Sandberg, Administrator Designate, FMCSA

Mary Peters, Administrator, FHWA



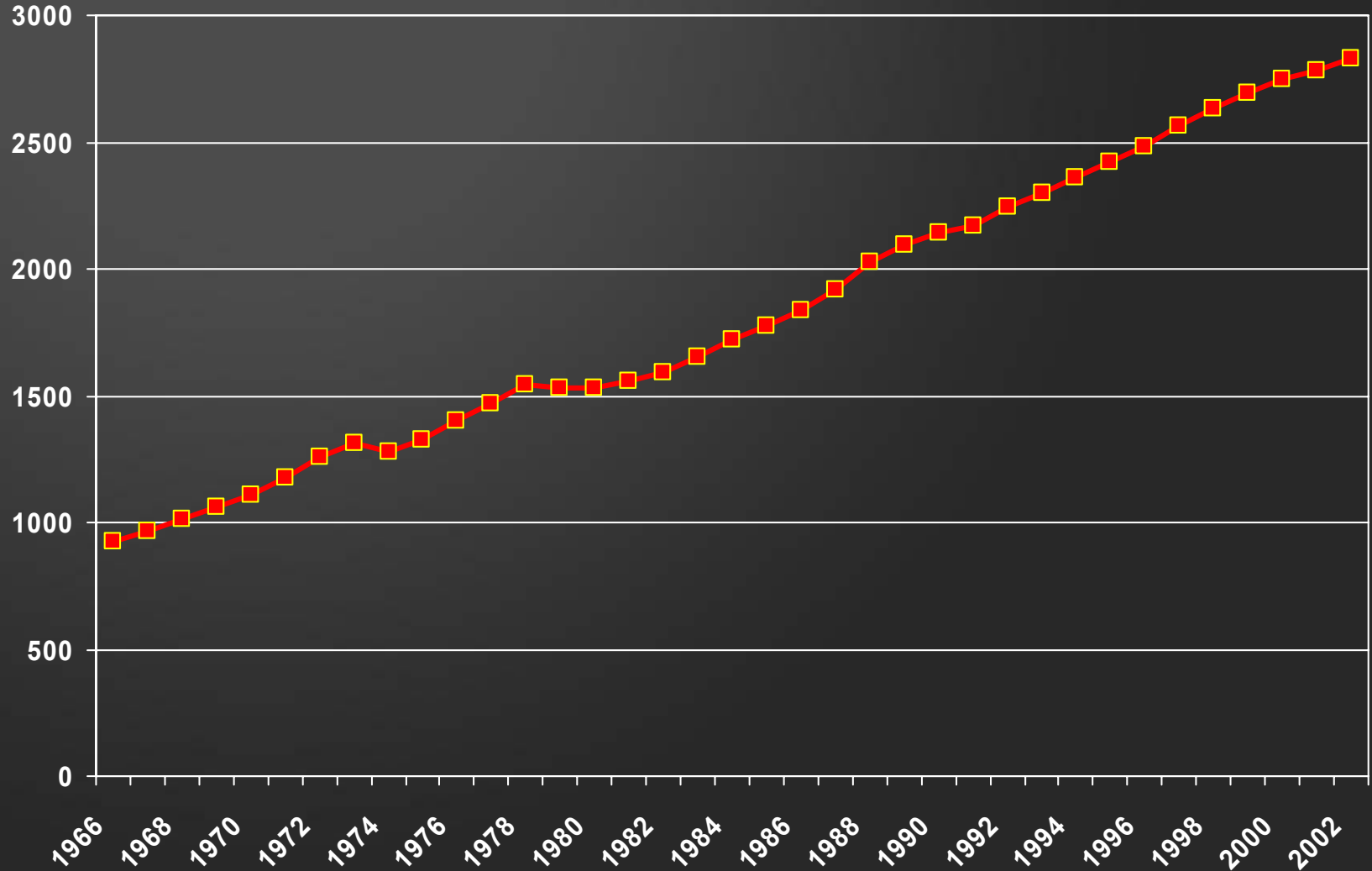
Persons Killed and Injured In Traffic Crashes

	Year		% Change
	2001	2002	
Persons Killed	42,116	42,850	+1.7%
Persons Injured	3,033,000	2,914,000	-3.9%

Source: FARS, NASS GES

Vehicle Miles Traveled, 1966 – 2002

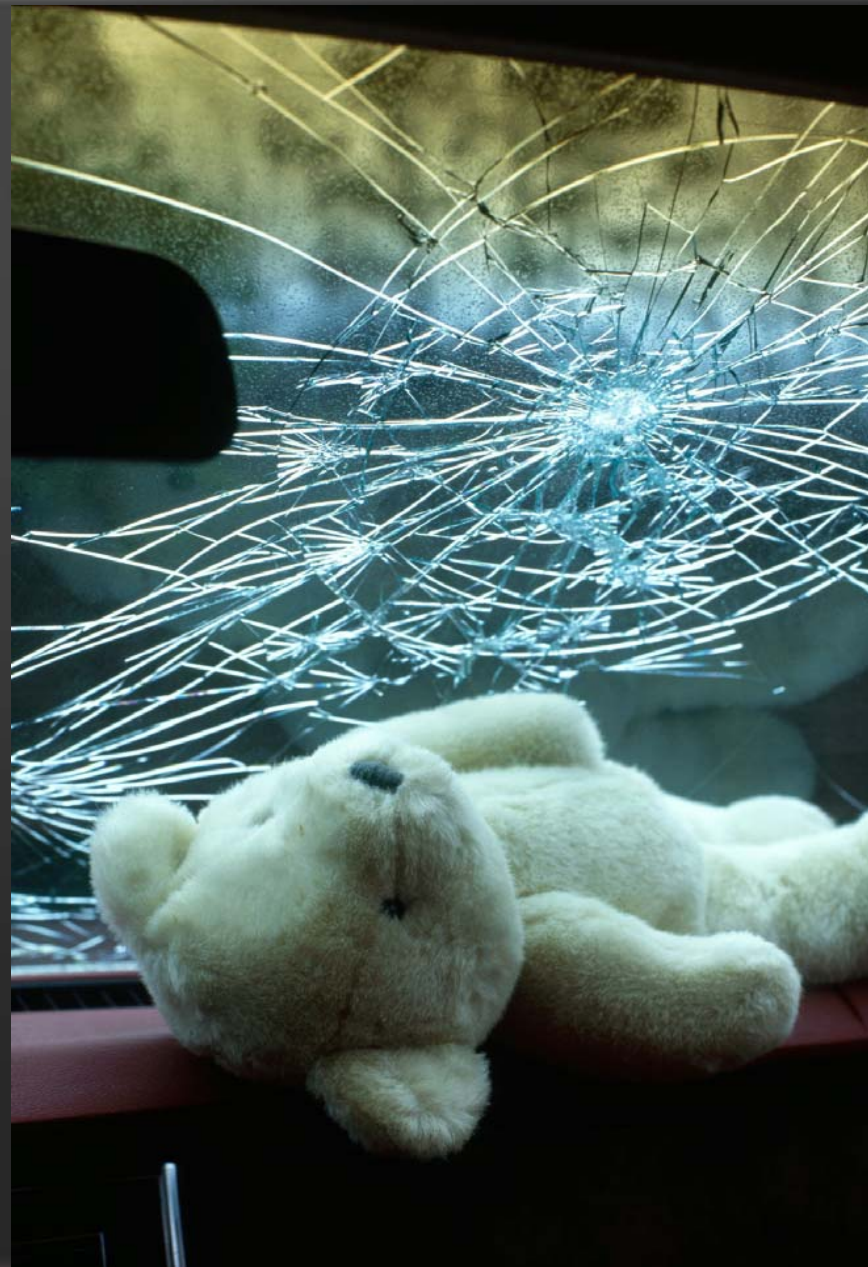
(in Billions)



Source: FHWA

Motor Vehicle Injuries ...

... are the leading cause of **death** in America from 2 to 33 years of age.



Cost of Motor Vehicle Crashes - 2000



- Total annual cost - **\$230.6 billion**
- Highlights
 - Non use of belts - \$20 billion
 - Impaired driving - \$51 billion
 - Average cost of \$820 for each man, woman, and child

1.0 Fatalities

per 100M VMT by 2008



U.S. Department
of Transportation



U.S. Department
of Transportation



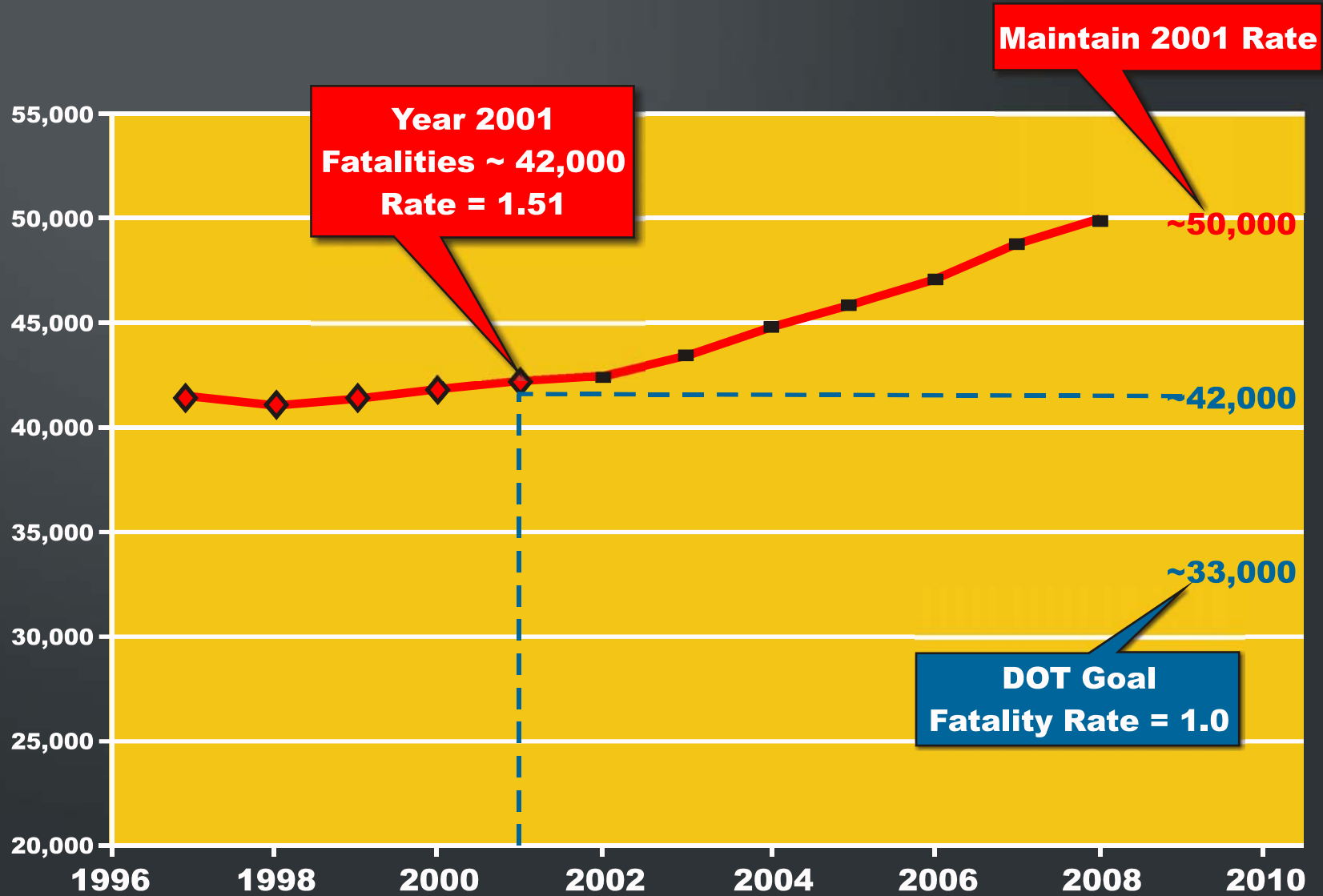
U.S. Department
of Transportation



Federal Highway
Administration

NHTSA
People Saving People
www.nhtsa.dot.gov

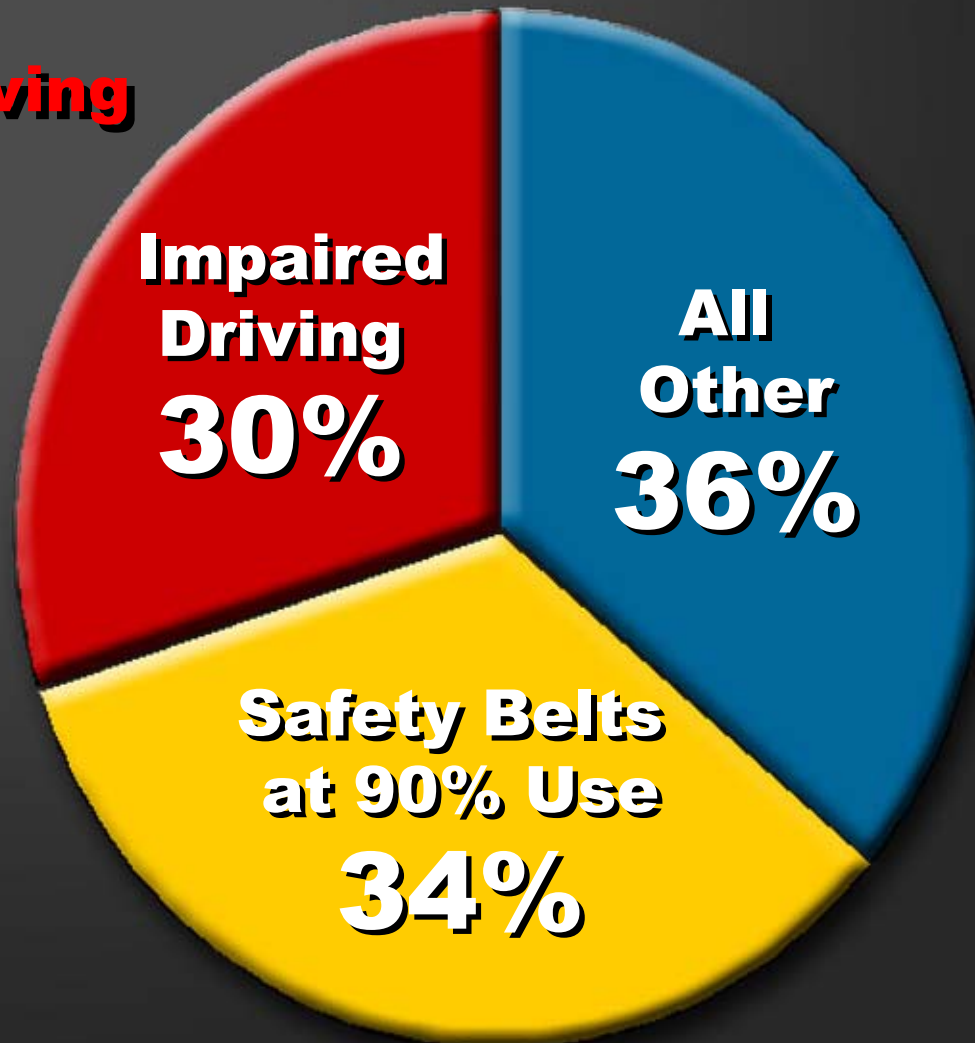
2008 Goal Is Challenging



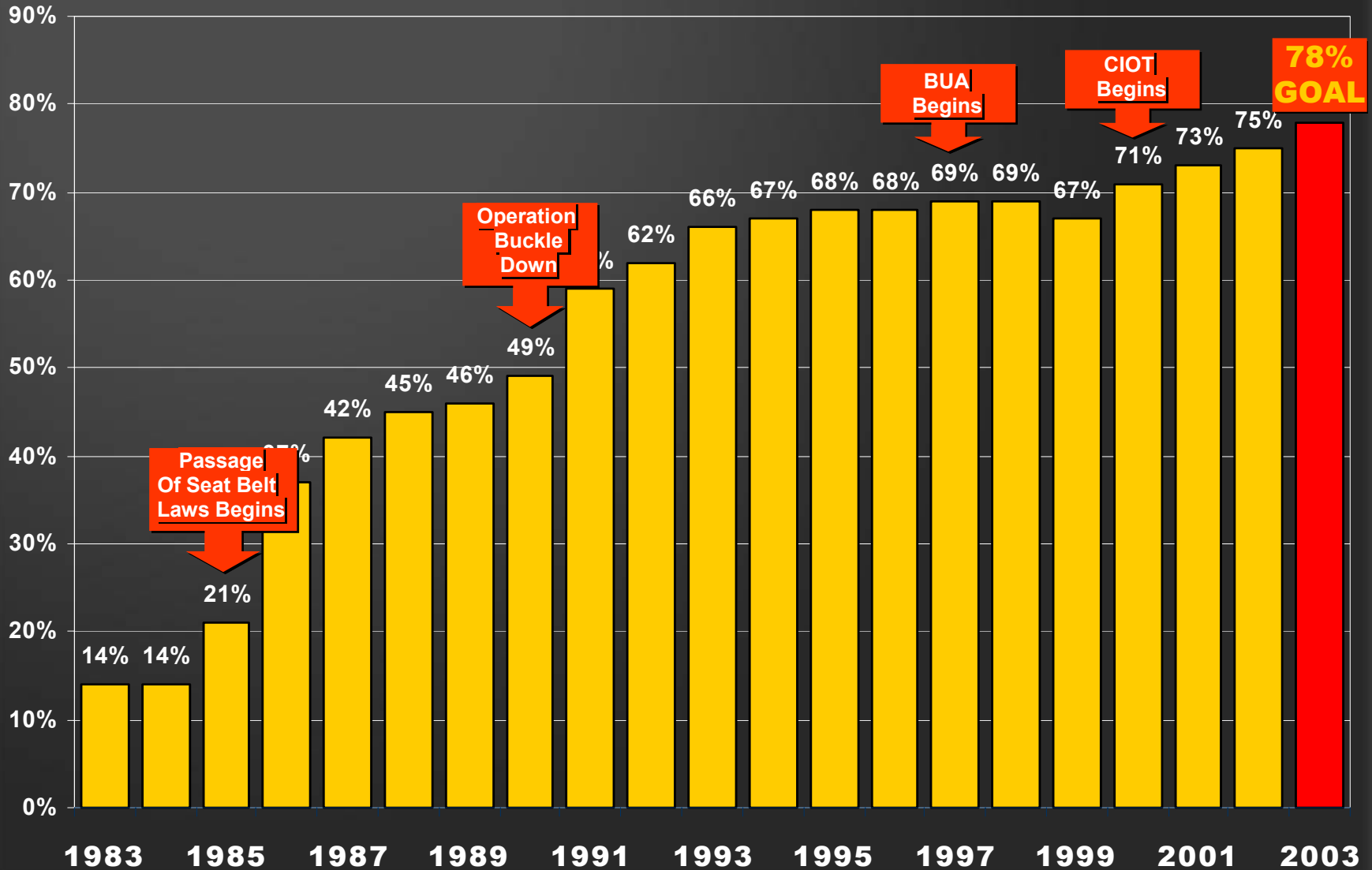
Predicted Lives Saved by Countermeasure

Impaired Driving

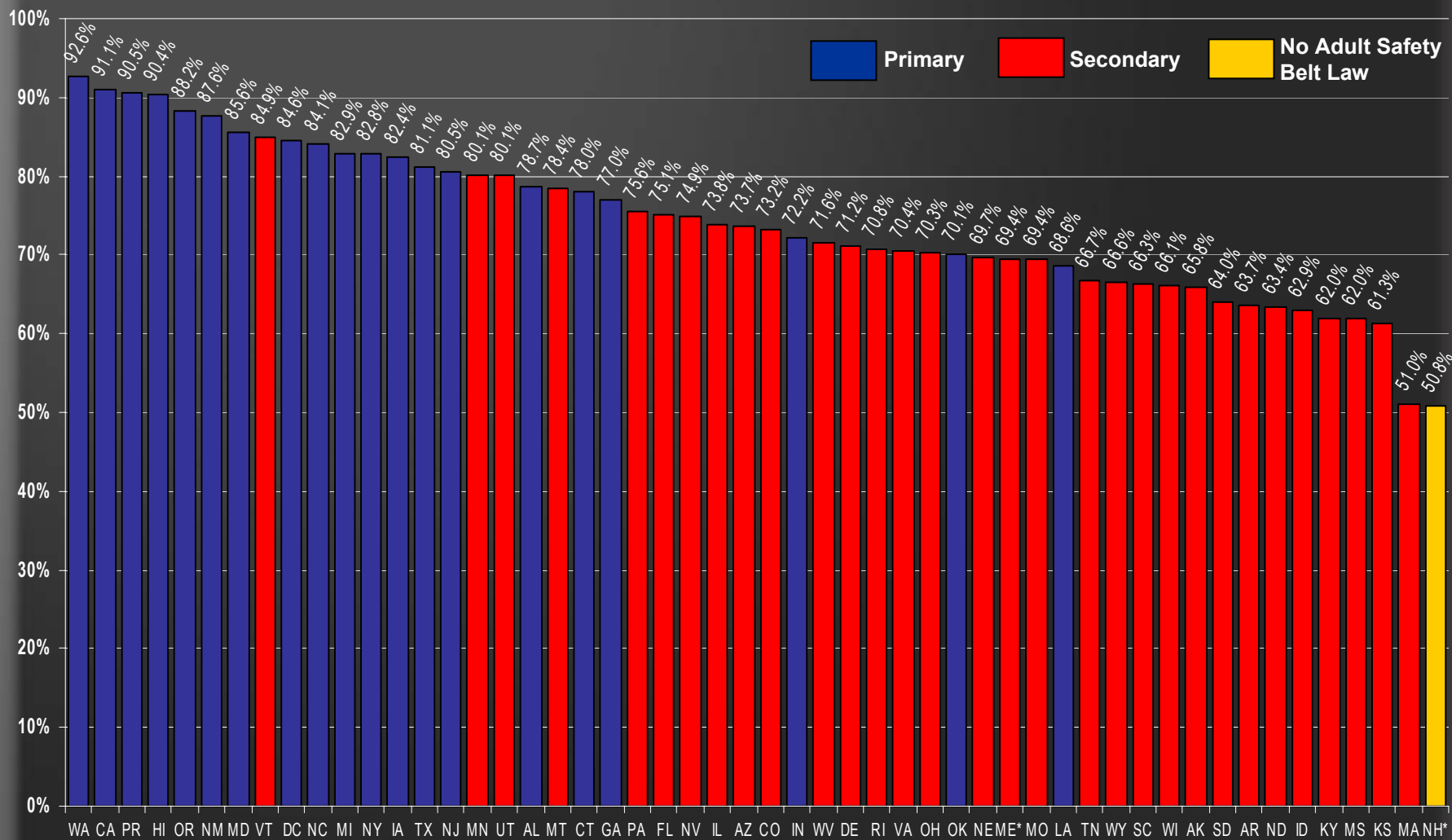
(Reduce A/R rate to
.44 per 100M VMT -
2000 baseline of .61)



Safety Belt Use Rates - 1983-2003



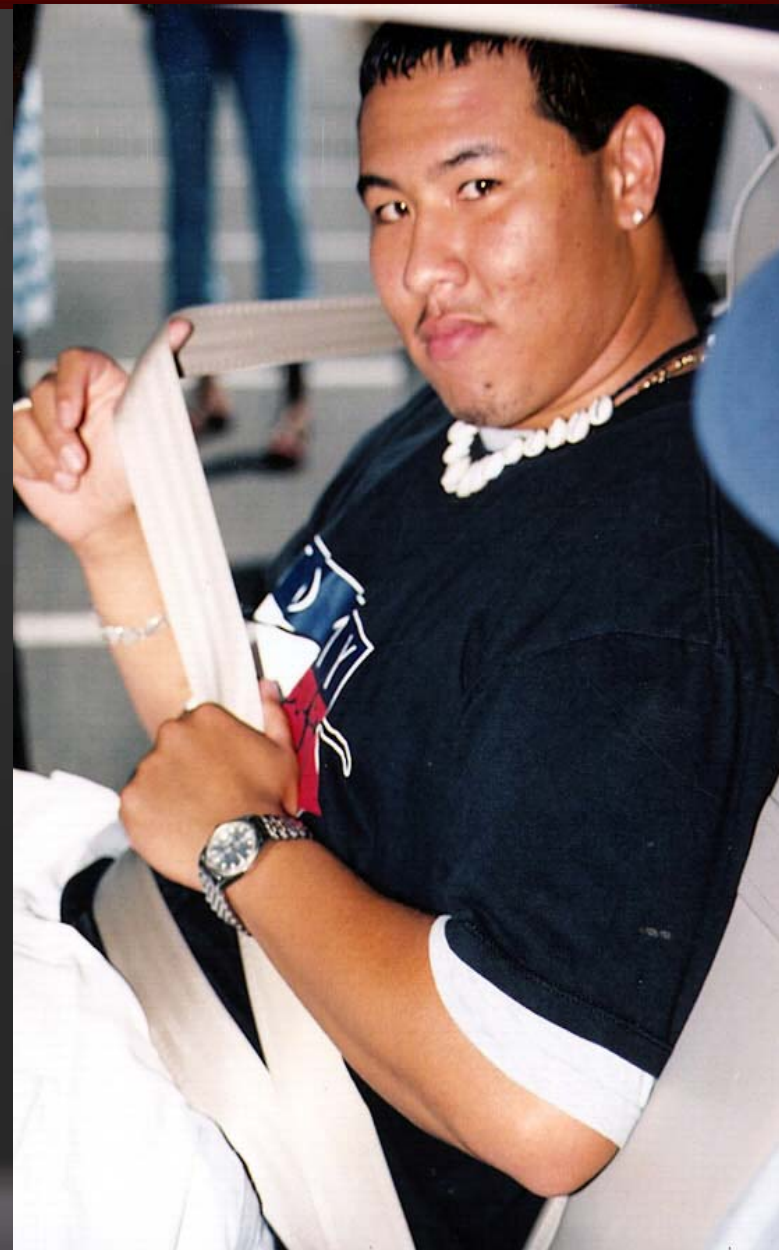
Safety Belt Use Rates by Type of Law (2002 rates)



*Maine and New Hampshire did not report use rates for 2002 based on observational surveys consistent with NHTSA's Uniform National Criteria. Rates shown in the chart for these States are statistically derived estimates for 2001

Safety Belt Benefits

- **For each 1% increase in belt use**
 - **2.8 million more people buckling up**
 - **250 lives saved**
 - **\$800 million cost saved**
 - **Reduce severity of 4,400 moderate-to-critical injuries**



Alcohol Related Fatalities in the United States

	Year		%
	2001	2002	Change
Total Deaths	17,448	17,970	+3.0%
Fatality Rate*	0.63	0.64	

* Rate per 100M VMT

Source: FARS

Impaired Driving Goal

**Not more than
.53
alcohol-related
fatalities
per 100M VMT
by end of 2004**



Reauthorization: SAFETEA

Safe

Accountable

Flexible and

Efficient

Transportation

Equity

Act of 2003

SAFETEA: Key Elements

- **Flexibility and accountability**
- **Safer, simpler, smarter**
- **\$7.5 billion for safety projects**
- **Strategic Highway Safety Plan is key**

State and Community Grant Programs

(S. 402)

- **Simplifies and consolidates eight highway safety grant programs into just three**

Targeted, High Payoff Program Incentives

- **Occupant Protection – one time grant for either**
 - **One-time incentive = five times the S.402 Grant FY '03 amount**
 - **Primary belt law; or**
 - **90% belt use**
- **Impaired driving**
 - **Up to \$50M per year for States with significant alcohol problems**

Fatality Reduction Incentives

- **About \$340 million distributed over 6 years**
- **Reduction in**
 - **Overall fatalities**
 - **Alcohol**
 - **Motorcycle**
 - **Bicycle**
 - **Pedestrian**

Strategic Highway Safety Plan

- **Developed by States**
- **Data-based**
- **Collaborative process**
- **US DOT approves**

Data Improvement Incentive Grants

- **\$50 million available to States each year**
- **Funds to enhance**
 - **Data collection**
 - **Storage**
 - **Transfer**
 - **Analysis**

EMS Enhancement Formula Grants

- **\$10 million formula grant available each year**
- **Build capacity in EMS systems**
- **Develop E-911**

NHTSA
People Saving People
www.nhtsa.dot.gov



**U.S. Department
of Transportation**

**Federal Highway
Administration**