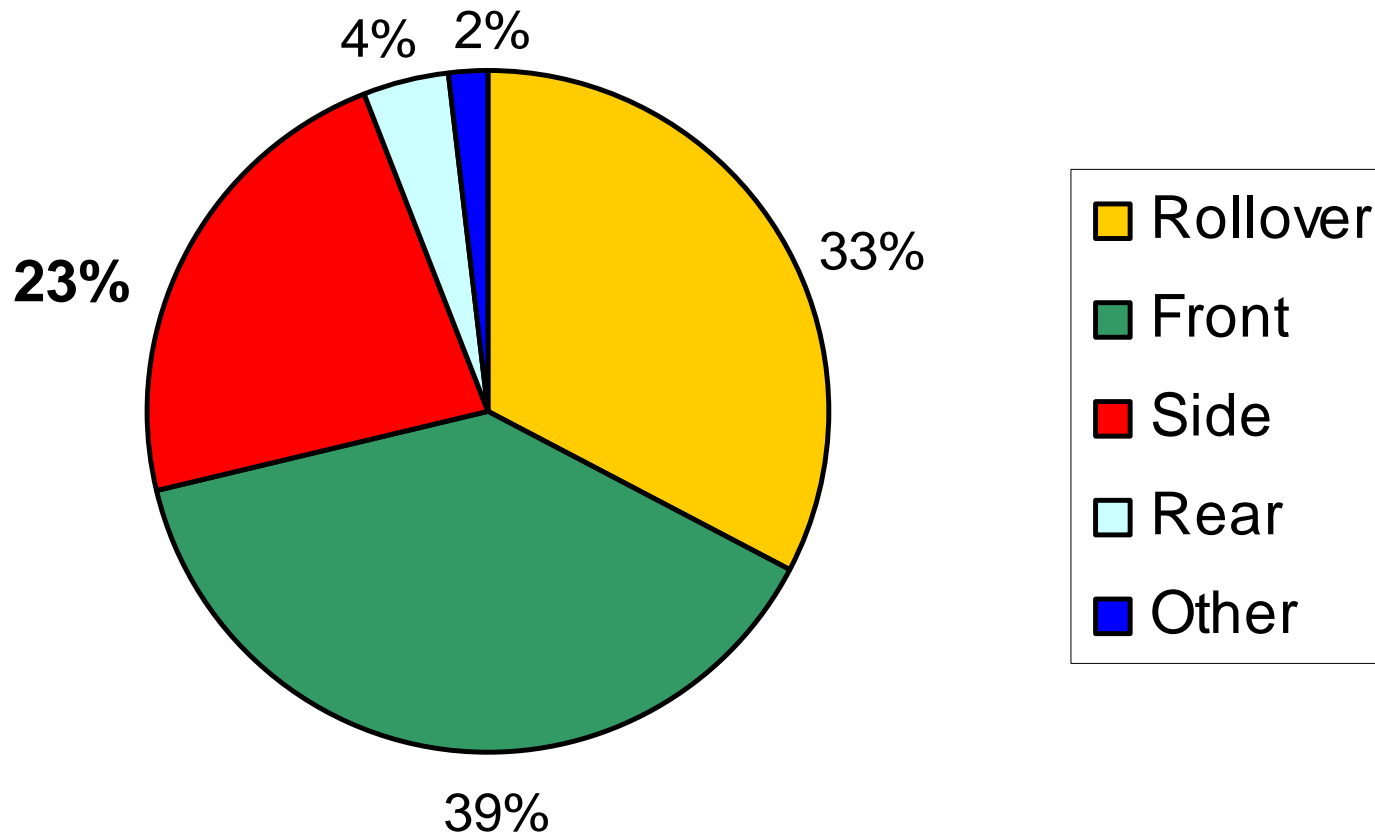


Passenger Vehicle Occupant Fatalities

by type of crash

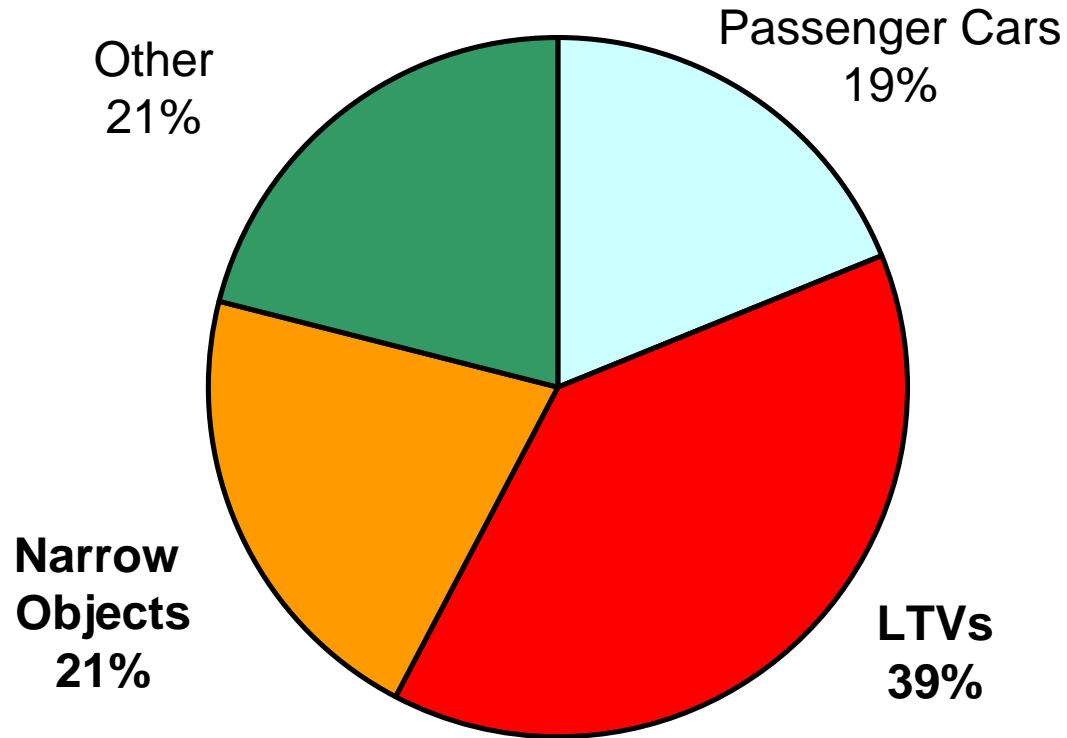


N=32,335

Source: 2002 FARS

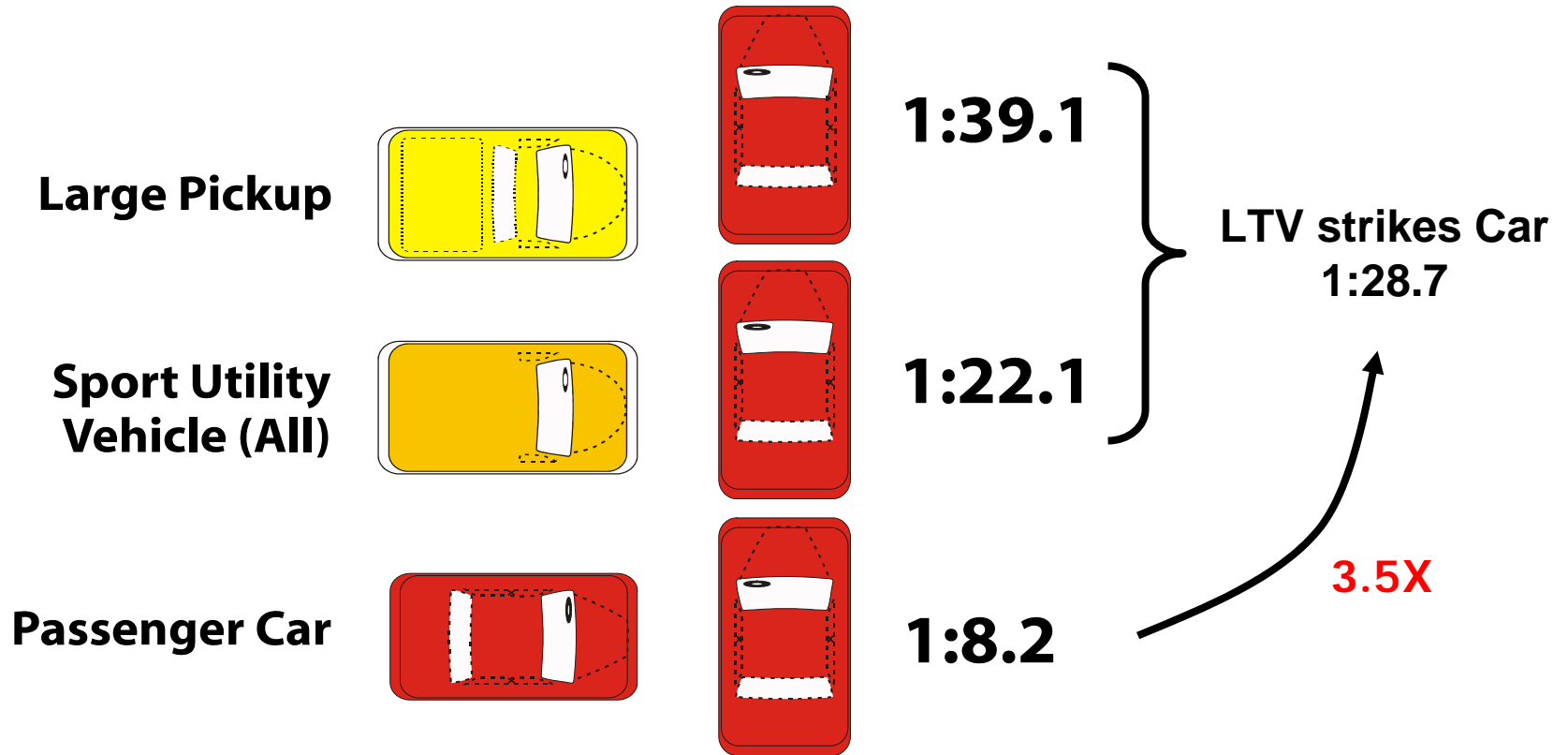
Side-impact Crashes (non-rollover)

by Crash Partner



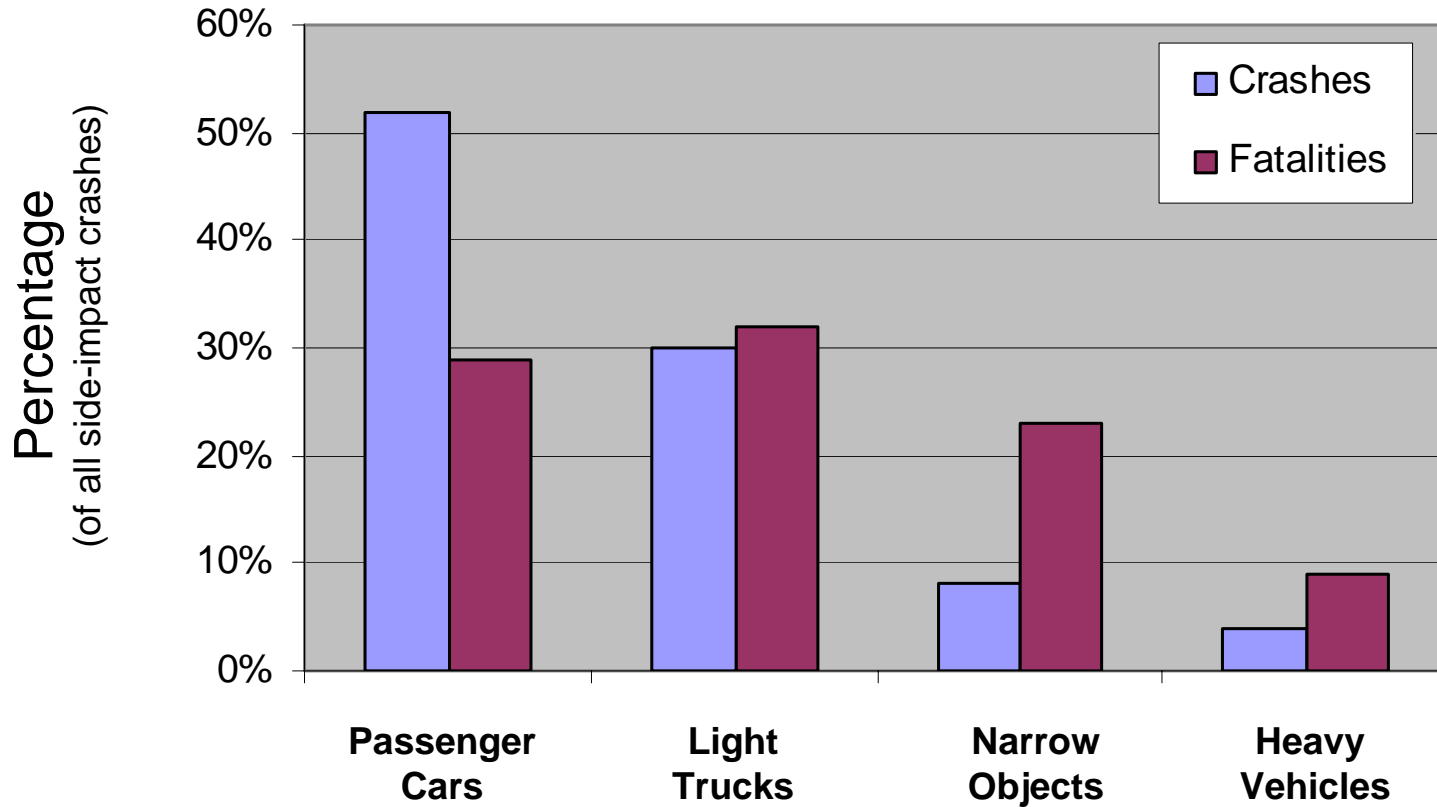
Source: 2002 FARS

Driver Fatality Ratios for Side-impact Crashes



3.5 times more likely to be killed by an LTV than a PC in a side-impact crash.

Distribution of Side-impact Crashes by What Hits You



Source: NHTSA