

National **SAFE KIDS** Campaign
15th Annual Leadership Conference



Jeffrey W. Runge, MD
Administrator

**National Highway Traffic
Safety Administration**

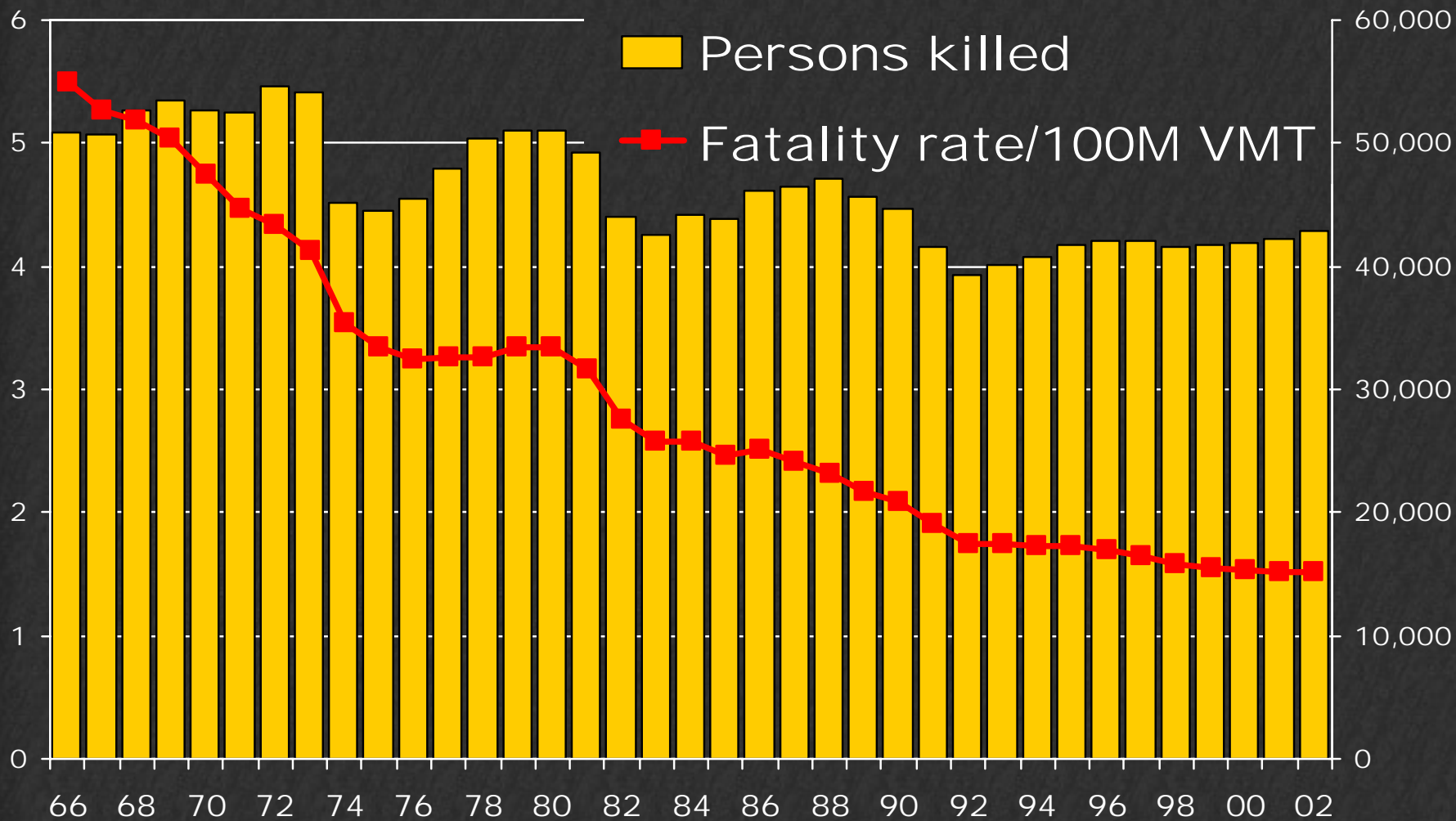
October 28, 2003







Persons Killed and Rate per 100M VMT



10 Leading Causes of Death, United States 1999, All Races, Both Sexes

(Click any colored box for details. Click on any Age Group for Percentages.)

Rank	Age Groups										All Ages
	<1	1-4	5-9	10-14	15-24	25-34	35-44	45-54	55-64	65+	
1	Congenital Anomalies 5,473	Unintentional Injury 1,898	Unintentional Injury 1,459	Unintentional Injury 1,632	Unintentional Injury 13,656	Unintentional Injury 11,890	Malignant Neoplasms 16,732	Malignant Neoplasms 46,681	Malignant Neoplasms 89,067	Heart Disease 607,265	Heart Disease 725,192
2	Short Gestation 4,392	Congenital Anomalies 549	Malignant Neoplasms 509	Malignant Neoplasms 503	Homicide 4,998	Suicide 5,106	Unintentional Injury 15,231	Heart Disease 34,994	Heart Disease 64,167	Malignant Neoplasms 390,122	Malignant Neoplasms 549,838
3	SIDS 2,648	Malignant Neoplasms 418	Congenital Anomalies 207	Homicide 246	Suicide 3,901	Homicide 4,231	Heart Disease 13,600	Unintentional Injury 11,639	Chronic Low. Respiratory Disease 11,297	Cerebrovascular 148,599	Cerebrovascular 167,366
4	Maternal Pregnancy Comp. 1,399	Homicide 376	Homicide 186	Suicide 242	Malignant Neoplasms 1,724	Malignant Neoplasms 4,005	Suicide 5,466	Liver Disease 6,368	Cerebrovascular 9,652	Chronic Low. Respiratory Disease 108,112	Chronic Low. Respiratory Disease 124,181
5	Respiratory Distress 1,110	Heart Disease 183	Heart Disease 116	Congenital Anomalies 221	Heart Disease 1,069	Heart Disease 3,066	HIV 6,232	Cerebrovascular 5,563	Diabetes Mellitus 9,097	Influenza & Pneumonia 57,282	Unintentional Injury 97,860
6	Placenta Cord Membranes 1,025	Influenza & Pneumonia 130	Benign Neoplasms 64	Heart Disease 161	Congenital Anomalies 434	HIV 2,729	Liver Disease 3,302	Suicide 5,081	Unintentional Injury 7,285	Diabetes Mellitus 51,843	Diabetes Mellitus 68,399
7	Unintentional Injury 845	Perinatal Period 92	Chronic Low. Respiratory Disease 49	Chronic Low. Respiratory Disease 90	Chronic Low. Respiratory Disease 209	Diabetes Mellitus 582	Homicide 3,206	Diabetes Mellitus 4,735	Liver Disease 5,637	Alzheimer's Disease 44,020	Influenza & Pneumonia 63,730
8	Bacterial Sepsis 691	Septicemia 87	Septicemia 47	Influenza & Pneumonia 47	HIV 198	Cerebrovascular 580	Cerebrovascular 2,574	HIV 3,907	Suicide 2,896	Unintentional Injury 32,219	Alzheimer's Disease 44,536
9	Circulatory System Disease 667	Benign Neoplasms 63	Influenza & Pneumonia 46	Cerebrovascular 39	Cerebrovascular 182	Congenital Anomalies 465	Diabetes Mellitus 1,942	Chronic Low. Respiratory Disease 3,110	Nephritis 2,864	Nephritis 29,938	Nephritis 35,525
10	Atelectasis 647	Chronic Low. Respiratory Disease 54	HIV 38	Benign Neoplasms 37	Influenza & Pneumonia 179	Liver Disease 407	Influenza & Pneumonia 1,063	Influenza & Pneumonia 1,697	Septicemia 2,714	Septicemia 24,626	Septicemia 30,680

Motor Vehicle Traffic Crashes as a Leading Cause of Death in the United States, 2000

RANK	Cause of Death by Age											Years of Life Lost ¹
	Infants Under 1	Toddlers 1-3	Young Children 4-7	Children 8-15	Youth 16-20	Young Adults 21-24	Other Adults			Elderly 65+	All Ages	
							25-34	35-44	45-64			
1	Perinatal Period 13,918	Congenital Anomalies 447	MV Traffic Crashes 567	MV Traffic Crashes 1,681	MV Traffic Crashes 5,873	MV Traffic Crashes 3,982	MV Traffic Crashes 6,716	Malignant Neoplasms 16,520	Malignant Neoplasms 137,039	Heart Disease 593,707	Heart Disease 710,760	Malignant Neoplasms 23% (8,468,700)
2	Congenital Anomalies 5,743	MV Traffic Crashes 430	Malignant Neoplasms 426	Malignant Neoplasms 827	Homicide 2,476	Homicide 2,385	Suicide 4,792	Heart Disease 13,181	Heart Disease 98,879	Malignant Neoplasms 392,366	Malignant Neoplasms 553,091	Heart Disease 22% (8,091,669)
3	Other Symptoms 3,639	Accidental Drowning 427	Smoke Exposure 202	Suicide 489	Suicide 1,911	Suicide 1,900	Homicide 4,274	MV Traffic Crashes 6,757	Stroke 15,967	Stroke 148,045	Stroke 167,661	Stroke 5% (1,708,035)
4	Oth/Unsp Nontransport 572	Homicide 323	Accidental Drowning 200	Homicide 431	Malignant Neoplasms 794	Malignant Neoplasms 788	Malignant Neoplasms 3,916	Suicide 6,562	Diabetes 14,140	Obstructive Pulmonary 106,375	Obstructive Pulmonary 122,009	MV Traffic Crashes 5% (1,674,868)
5	Heart Disease 493	Malignant Neoplasms 312	Nervous Disease 183	Nervous Disease 374	Accidental Poisoning 468	Accidental Poisoning 669	Heart Disease 2,958	HIV 5,919	Obstructive Pulmonary 13,990	Pneumonia 57,011	Diabetes 69,301	Obstructive Pulm Disease 4% (1,414,309)
6	Homicide 349	Other Symptoms 228	Congenital Anomalies 173	Congenital Anomalies 330	Heart Disease 443	Heart Disease 519	HIV 2,437	Accidental Poisoning 4,663	Liver Disease 12,428	Diabetes 52,414	Pneumonia 63,548	Prenatal Period 3% (1,080,590)
7	Nervous Disease 293	Oth/Unsp Nontransport 222	Homicide 127	Accidental Drowning 300	Other Symptoms 380	Other Symptoms 444	Accidental Poisoning 2,380	Liver Disease 3,371	MV Traffic Crashes 8,583	Alzheimer's 48,993	Alzheimer's 49,558	Suicide 3% (1,032,765)
8	Pneumonia 280	Smoke Exposure 221	Oth/Unsp Nontransport 112	Heart Disease 269	Accidental Drowning 366	Oth/Unsp Nontransport 286	Other Symptoms 1,554	Homicide 3,320	Suicide 8,382	Mental Retardation 36,656	MV Traffic Crashes 41,995	Diabetes 3% (970,832)
9	Septicemia 274	Nervous Disease 209	Heart Disease 89	Oth/Unsp Nontransport 239	Nervous Disease 330	Nervous Disease 249	Oth/Unsp Nontransport 895	Other Symptoms 2,987	Other Symptoms 5,395	Nephritis 31,225	Mental Retardation 38,882	Other Symptoms 2% (825,216)
10	Other Respiratory 254	Heart Disease 163	Other Symptoms 75	Metabolic Disorder 174	Oth/Unsp Nontransport 322	Accidental Drowning 221	Injury Intent Unk. 679	Stroke 2,599	HIV 5,381	Septicemia 24,786	Nephritis 37,251	Homicide 2% (792,291)
ALL*	28,035	4,195	2,823	6,933	15,727	14,021	40,451	89,798	401,187	1,799,825	2,403,351	All Causes 100% (36,067,102)

1.0 Fatalities

per 100M VMT by 2008



U.S. Department
of Transportation



U.S. Department
of Transportation



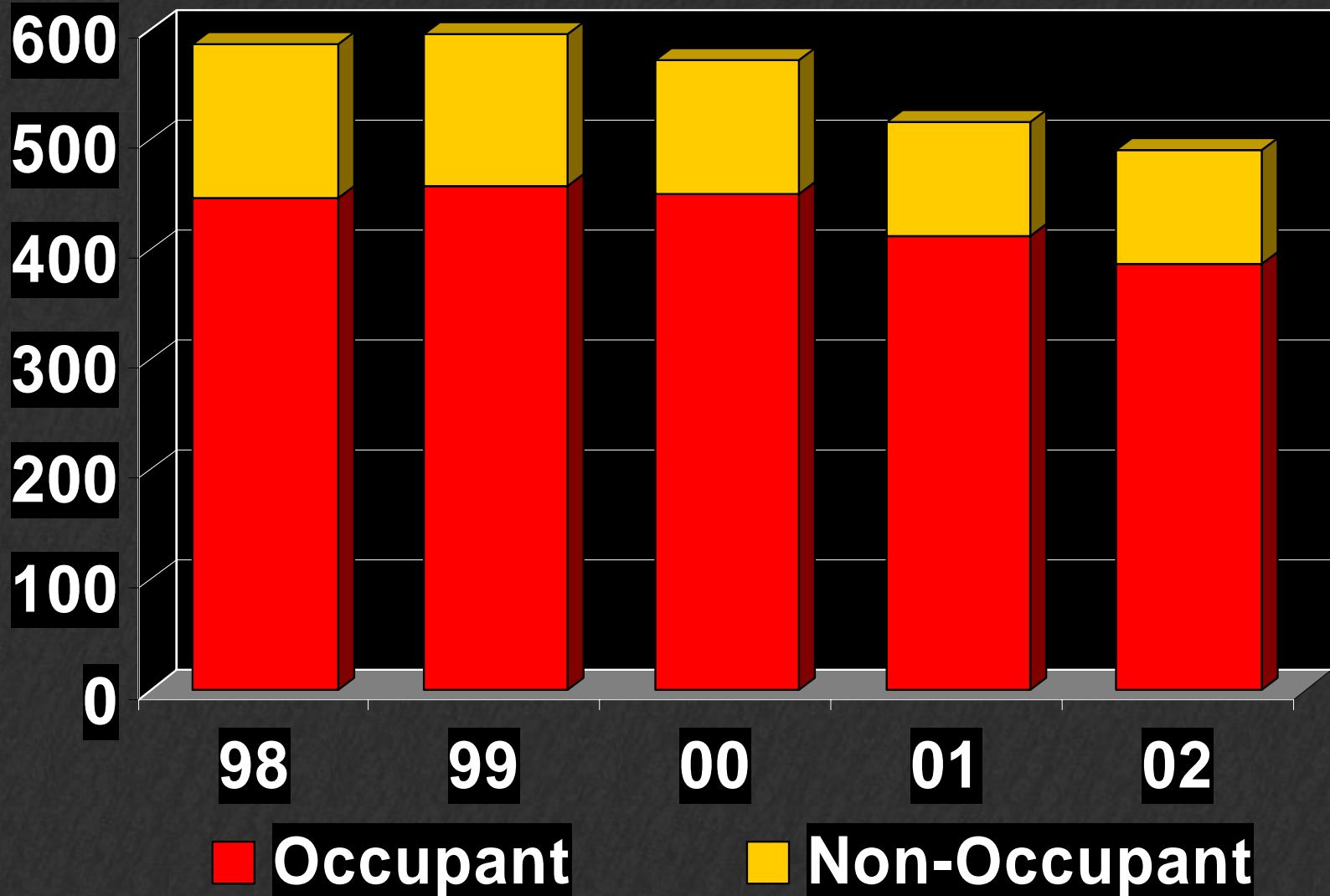
U.S. Department
of Transportation



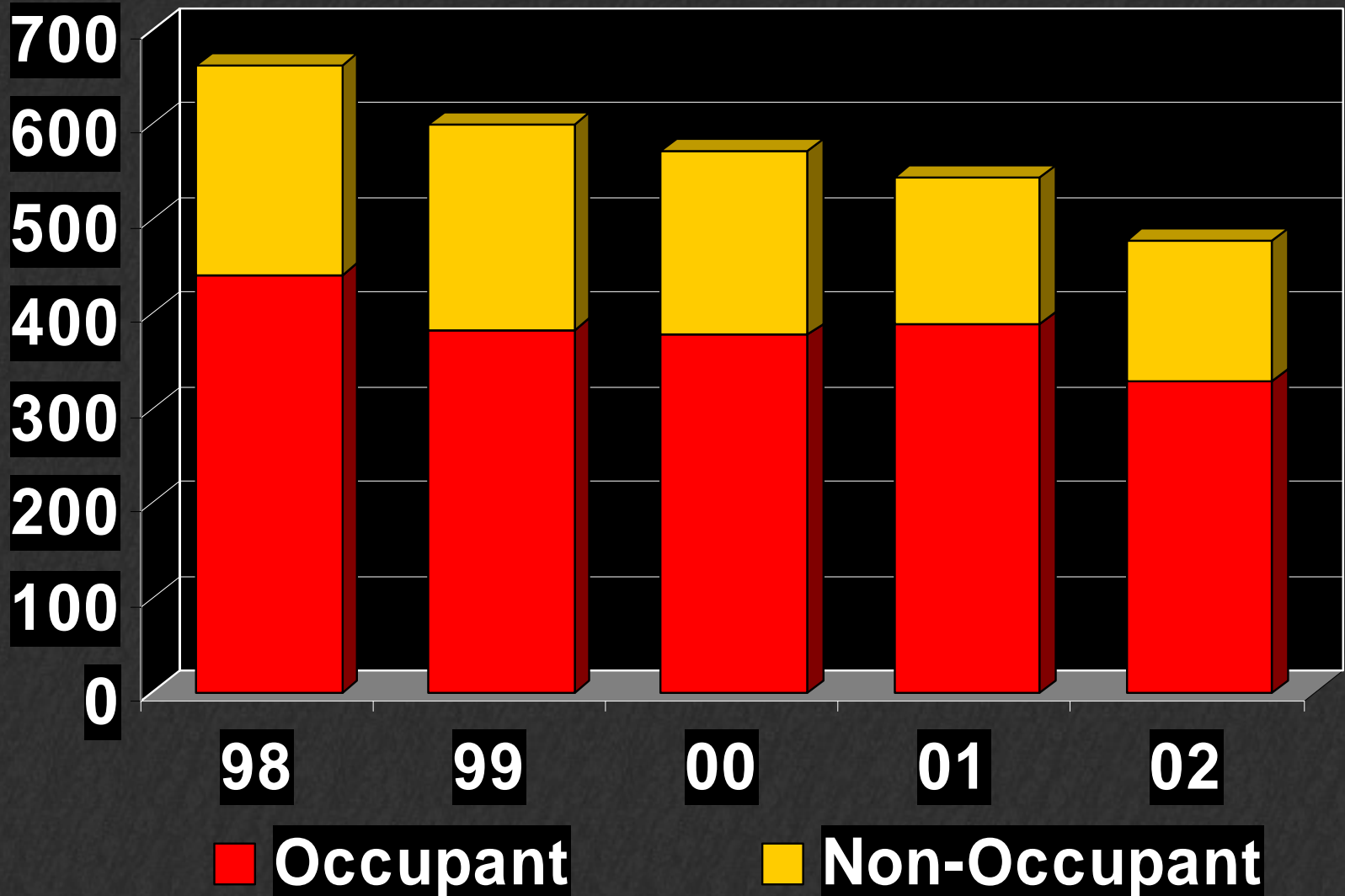
Federal Highway
Administration



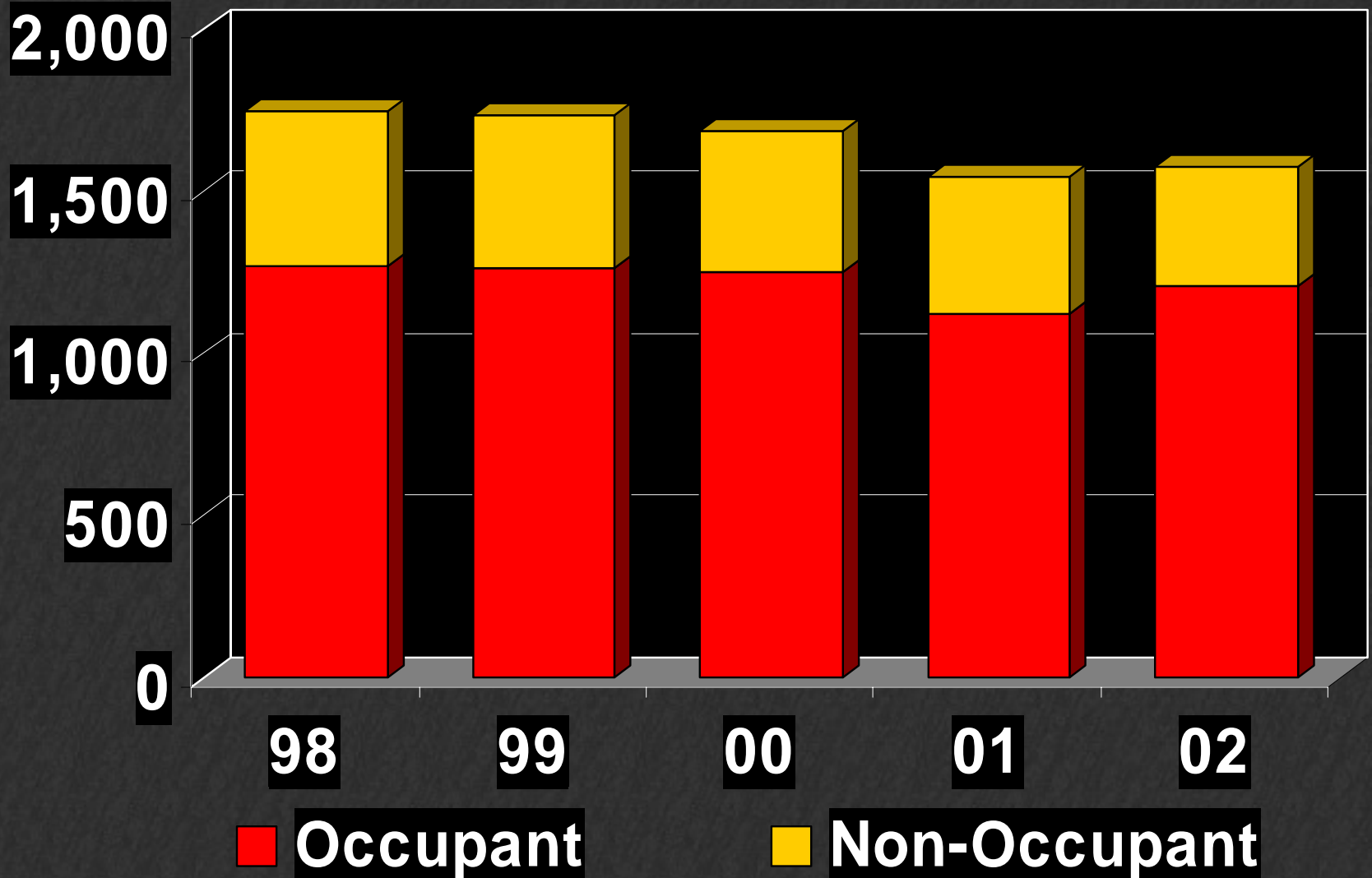
Fatalities Among Children Ages 0-3



Fatalities Among Children Ages 4-7



Fatalities Among Children Ages 8-15



Restraint Use by Children

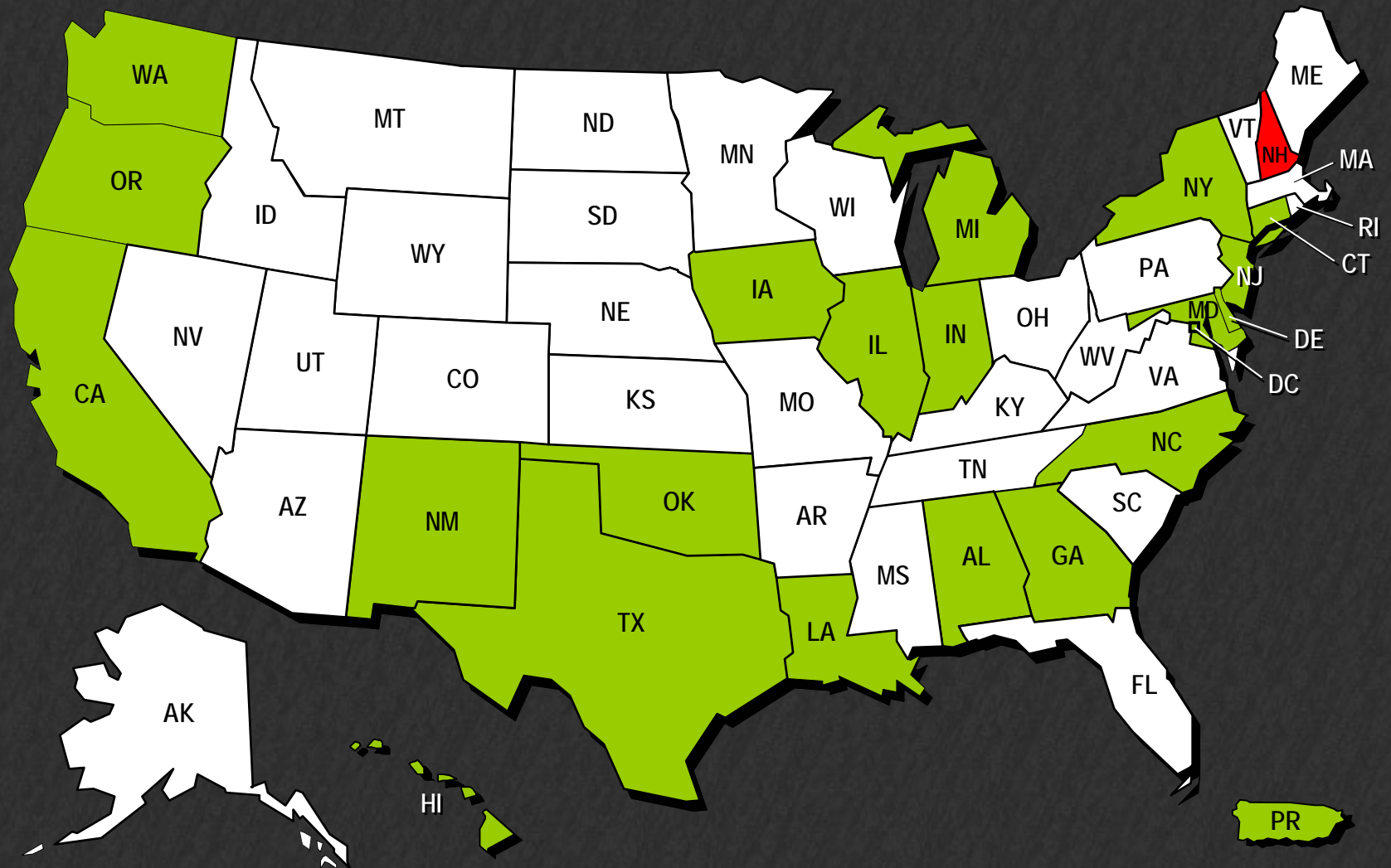
	Observed Use		Sitting in Front Seat	
	2000	2002	2000	2002
Infants	95%	99%		15%
Toddlers	91%	94%		10%
Booster Age		83%		29%
Youth*	66%	82%		

*Youth 2000: ages 5-15 2002: ages 8-15

Child Restraint Use by Driver Status

	Restraint Use by Child Passenger	
	2000	2002
Belted Driver	97%	92%
Unbelted Driver	86%	72%

State *Safety Belt* Laws 2003

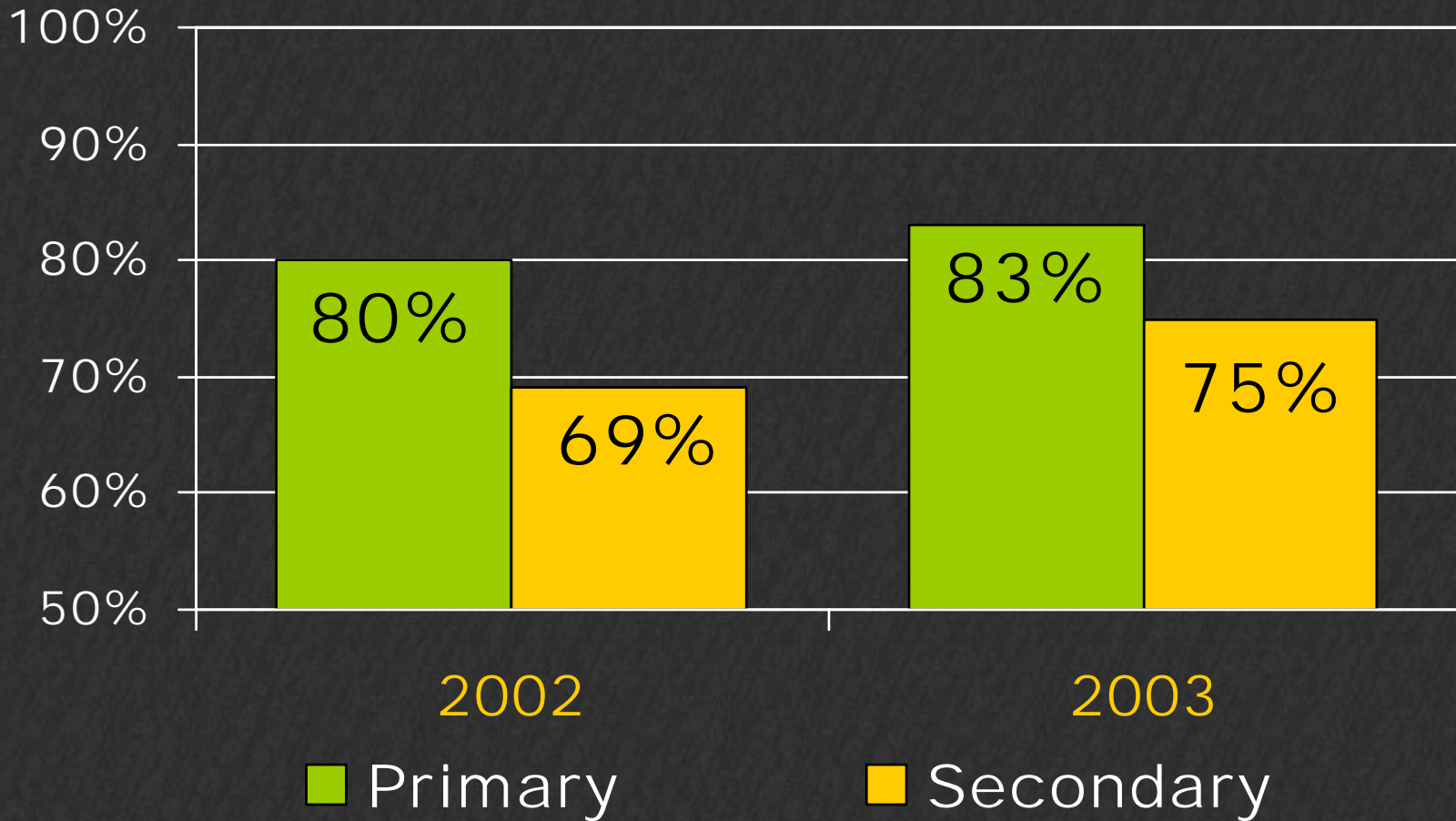


 Primary

 Secondary

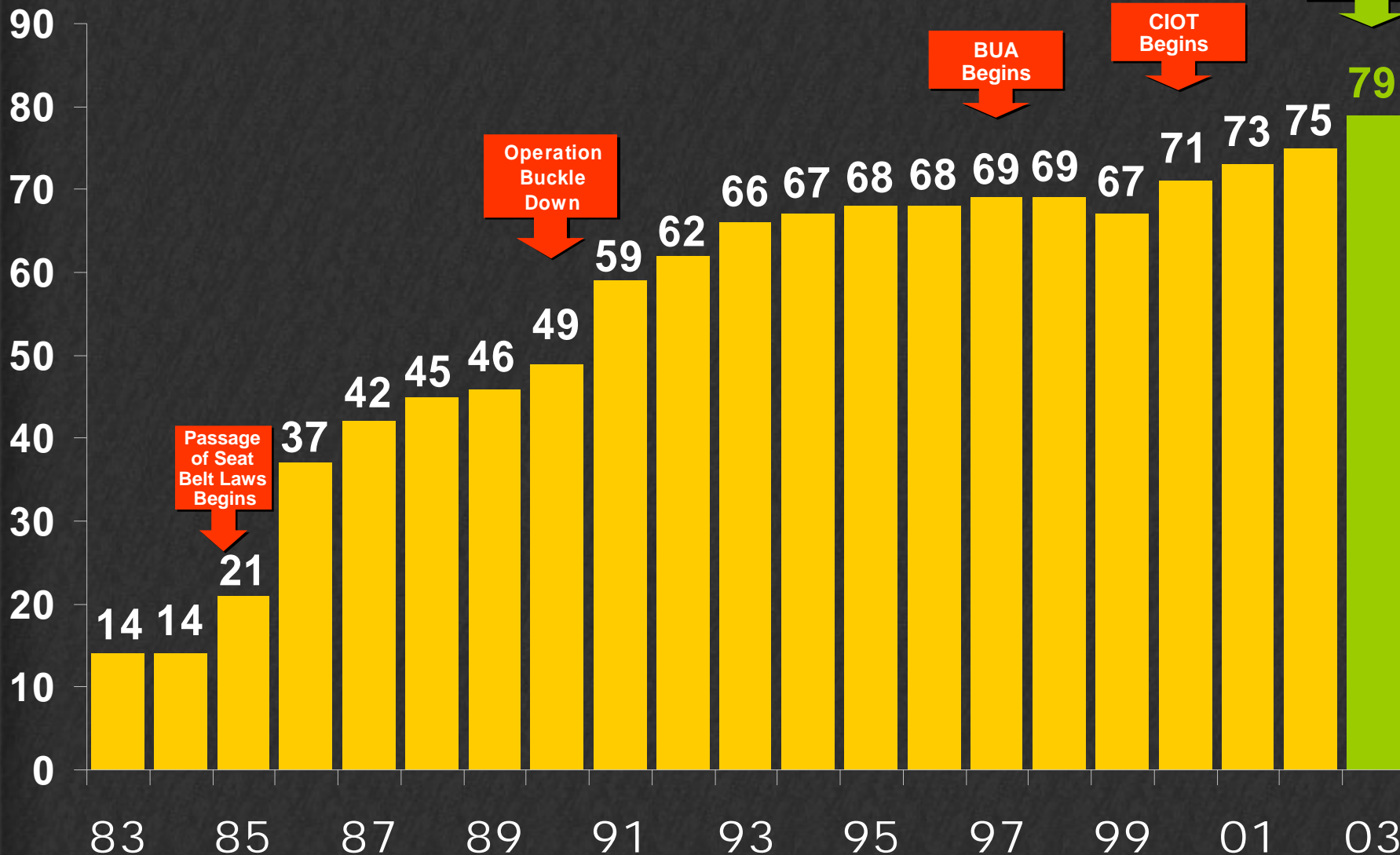
 No Adult Safety Belt Law

Safety Belt Use: Primary vs. Secondary States



Safety Belt Use Rates

1983 - 2003 Percentage Use



Reauthorization: SAFETEA

Safe

Accountable

Flexible

Efficient

Transportation

Equity

Act of 2003

2003 CHILD PASSENGER SAFETY SUMMIT



JUNE 2 - 3, 2003



CÓMO COMPRAR UN AUTO MÁS SEGURO PARA NIÑOS PASAJEROS 2003



No



No



No



No



SÍ



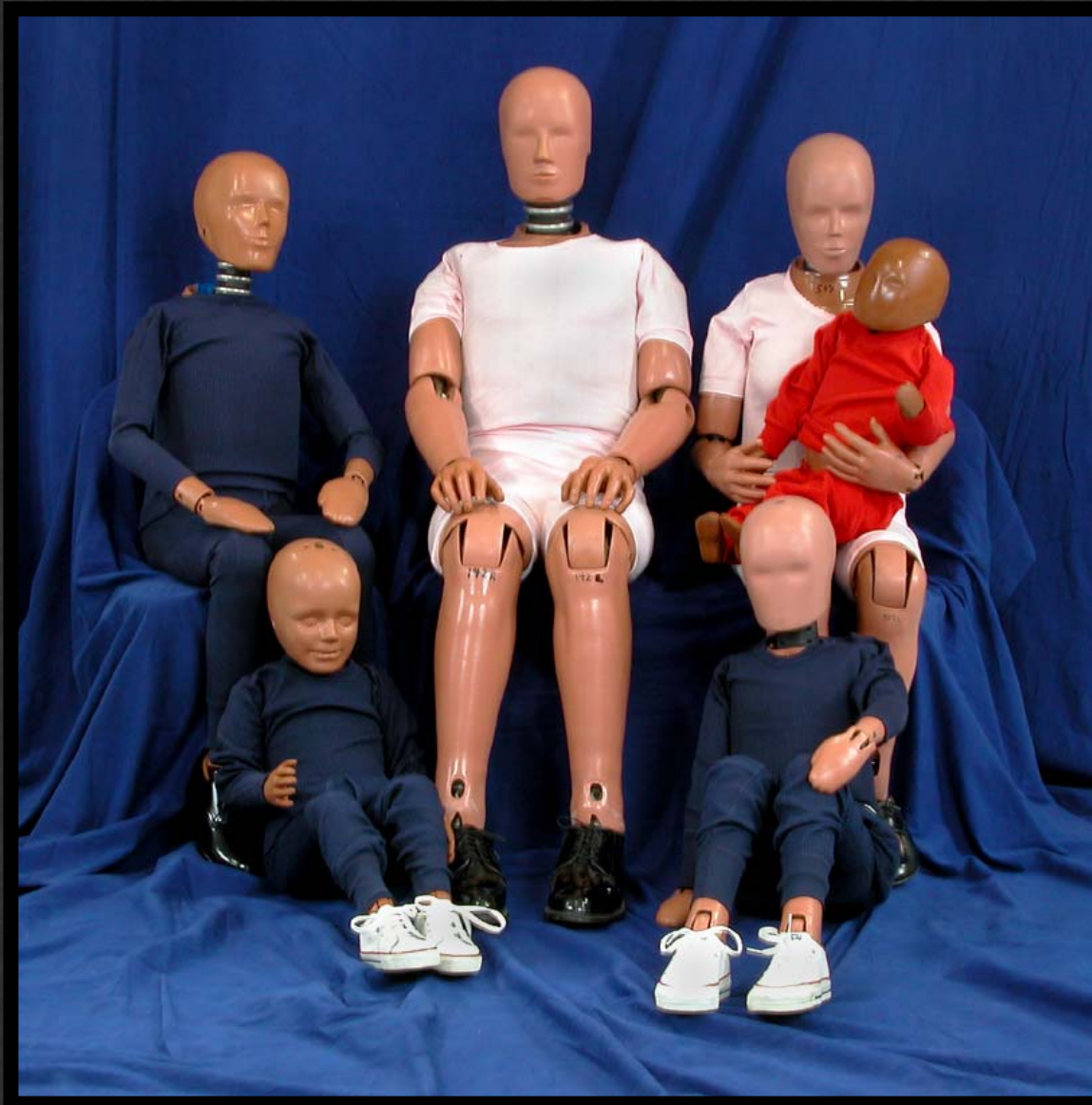
Sálvele la Vida a
su Bebé Usando un
Asiento de Seguridad,
En el asiento Trasero.
Es Fácil y es la Ley.



Ease of Use Ratings for Child Safety Seats

www.nhtsa.gov

Anthropomorphic Family







People Saving People

www.nhtsa.gov

1-888-327-4236