

Accuracy of Petroleum Supply Data

by Tammy G. Heppner and Carol L. French

Overview

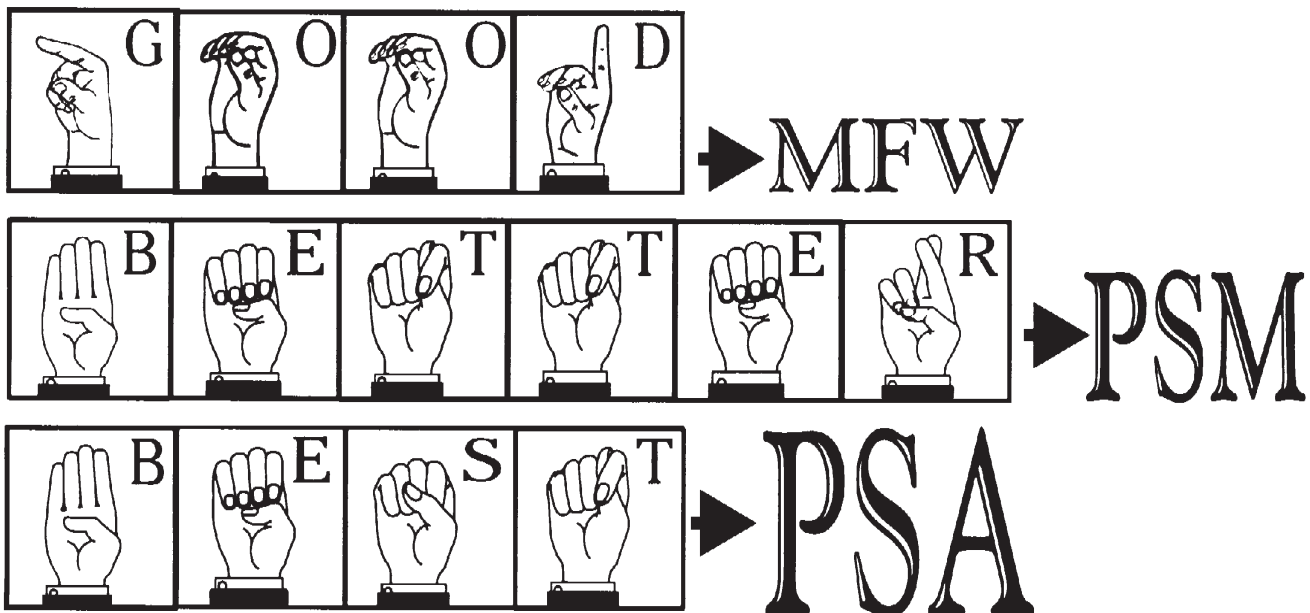
Petroleum supply data collected by the Petroleum Division (PD) of the Energy Information Administration (EIA) displayed improving signs of accuracy in 1997. These data were presented in a series of PD publications: the *Weekly Petroleum Status Report (WPSR)*, the *Winter Fuels Report (WFR)*, the *Petroleum Supply Monthly (PSM)*, and the *Petroleum Supply Annual (PSA)*. Weekly estimates in the *WPSR* and *WFR* were the first values available.

Figure FE1 illustrates the improving signs of accuracy from the weekly estimates to the interim monthly values to the final petroleum supply values. The monthly-from-weekly (MFW) data are the least accurate but “good.” The *PSM* data are more accurate or “better” and the *PSA* data are the most accurate or “best.” For 1997, 66 petroleum supply data series were analyzed to determine how close the *PSM* values were to the final *PSA* values. For these series, 45 out of the 66 were within 1 percent of the *PSA* values in terms of mean absolute percent error. Sixty-one petroleum supply data series were analyzed to see how close the MFW estimates were to the final *PSA* values. For these 61 series, 27 were within 2 percent of the *PSA* values in terms of mean absolute percent error and, of those, 11 were within 1 percent.

Two major factors that contribute to the *PSM* values being more accurate than the MFW estimates are: (1) the greater length of time between the close of the reference period and the publication date of the *PSM*; and, (2) some MFW values are estimates whereas many *PSM* respondents extract their actual data from automated accounting systems. The greater length of time allows more in-depth review of the data by the respondents and EIA. Within 2 months of the close of a reference month, interim values are published in the *PSM*. The weekly data are more quickly available. The *WPSR* is available electronically 5 days after and in hardcopy 7 days after the close of the reference week (excluding holiday weeks). Propane data are available electronically and in the *WPSR*. About 5 months after the end of the reference year, final monthly values, reflecting any resubmissions, are published in the *PSA*.

Historically, the weekly publications (*WPSR* and *WFR*) and the monthly publication (*PSM*) provided volumes of crude oil and petroleum products data at relatively increasing levels of accuracy. This article provides petroleum analysts with a measure of the degree to which, on average, estimates and interim values vary from their final values.

Figure FE1. The “Best” Sign for 1997 PD Data



The Petroleum Supply Reporting System

The 15 surveys in the Petroleum Supply Reporting System (PSRS) track the supply and disposition of crude oil, petroleum products, and natural gas liquids in the United States. To maintain a database with historically accurate observations and current estimates from the petroleum industry, EIA administers three survey series: weekly, monthly, and biennial (every other year).

The PSRS is organized into two data collection subsystems, the Weekly Petroleum Supply Reporting System (WPSRS) and the Monthly Petroleum Supply Reporting System (MPSRS). The WPSRS processes data from the five weekly surveys. In addition, the Form EIA-807, "Propane Telephone Survey," collects data weekly from October through March. The MPSRS includes eight monthly surveys, one biennial survey, and the Form EIA-807 monthly data, which are collected from April through September.

Figure FE2 displays the petroleum supply and distribution system and indicates the points at which petroleum supply data are collected. Both weekly and monthly surveys are

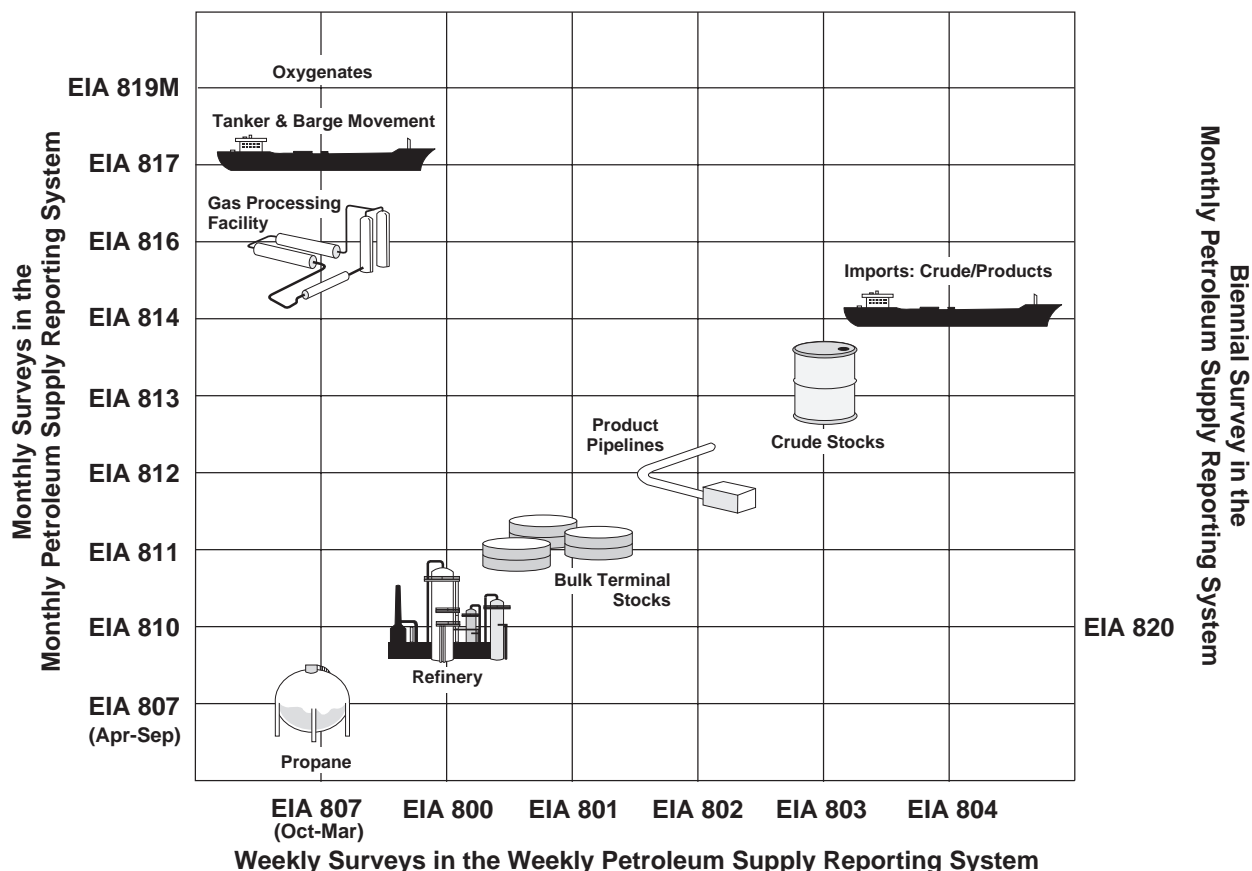
administered at six key points along the petroleum production and supply path: (1) refineries, (2) bulk terminals, (3) product pipelines, (4) crude oil stock holders, and (5) importers of crude oil and products.

Due to budget reductions, EIA modified the collection of the annual Form EIA-820, "Annual Refinery Report" to be the Form EIA-820, "Biennial Refinery Report." Annual U.S. refinery capacity data collection and publication normally presented in Volume 1 of the *PSA* were collected and published for 1997.

The Weekly Petroleum Supply Reporting System

The WPSRS contains the data collected from the five weekly surveys. Each weekly survey is distributed to a sample of the corresponding monthly survey's universe. In Figure FE2, the icons represent the target population of the monthly and weekly surveys of the PSRS. For example, the target population for the survey Forms EIA-801 and EIA-811 is bulk terminal stocks. Thus, the respondents to the Form EIA-801 are a sample of the respondents who report on Form EIA-811. For the weekly surveys, EIA aims for a minimum 90-percent multi-attribute-cutoff sample from the respondents to the

Figure FE2. Petroleum Supply Reporting System: Surveys and Subsystems



Source: Energy Information Administration, Petroleum Supply Reporting System.

corresponding monthly survey. In choosing the sample for each product, companies are ranked in descending order by volume. Respondents are chosen in order, down the list until the sample includes those companies contributing at least 90 percent of a variable's total volume. For example, for distillate fuel oil stocks, the weekly sample includes those respondents whose combined volumes of stocks for distillate fuel oil from refineries, bulk terminals, and pipelines constitute at least 90 percent of the total volume of distillate fuel oil stocks as reported in the corresponding monthly surveys.

With these weekly surveys, EIA can provide timely, relatively accurate snapshots of the U.S. petroleum industry every week. The weekly surveys collect information on the supply and disposition of selected petroleum products and crude oil. The reference period for each weekly survey begins at 7:01 a.m. each Friday and ends at 7:00 a.m. the following Friday. Respondents report their data via telephone, facsimile, or EIA's electronic data collection software package, the Personal Computer Electronic Data Reporting Option (PEDRO). All respondents must submit their data by 5:00 p.m. on the Monday following the end of the reference period. During 2 working days, quality control procedures are executed. Cell values determined to be unusual or inconsistent with other cell values are flagged. The validity of the value of each flagged cell is investigated. Some flagged values are verified by the respondent to be correct; other flagged cells are corrected; and the remaining flagged values are referred to as unresolved. Nonrespondent and unresolved flagged data are imputed using an exponentially smoothed mean of the respondents' historical data.

Within 7 days of the close of the reference week, data are made available to the public in three forms: through the EIA's internet web site (<http://www.eia.doe.gov>), the EIA electronic publishing system (EPUB), and hardcopy (through the *WPSR*). Except when holidays delay data processing schedules, values for the weekly variables, with the exception of propane, are available via the internet and EPUB at 9:00 a.m. on the Wednesday following the close of the reference week. Propane data are available via the internet and EPUB at 5:00 p.m. on the same Wednesday. The hardcopy *WPSR* is distributed on the Friday morning following the close of the reference week.

The Monthly Petroleum Supply Reporting System

The reference period for the monthly surveys starts on the first day of the month at 12:01 a.m. and ends on the last day of the month at midnight. Except for the Form EIA-819M, the deadline for filing monthly surveys is the 20th calendar day following the end of the report month. Data collection for the Form EIA-819M begins on the seventh working day of the month. Form EIA-819M data are solicited by telephone or

received by facsimile. Data for the other monthly surveys are reported via telephone, facsimile, or PEDRO.

During the period of data editing, either the respondent or EIA staff may identify an error. If the respondent discovers an error, the EIA representative for a particular survey is notified and the value is corrected. If EIA's edits diagnose an unusual value, an EIA representative will determine if the value is correct or incorrect by calling the company and/or reviewing historical data.

Within 60 days of the close of the reference month, all of the interim monthly data are published in the *PSM*. However, customer satisfaction surveys conducted by EIA during 1995 showed a need for faster release of available monthly data. In response to this need, beginning in November 1995, EIA implemented a plan for early release of monthly petroleum statistics approximately 45 days after the end of the report period. The preliminary data are presented in four tables: "U.S. Daily Average Supply and Disposition of Crude Oil and Petroleum Products," "Imports of Crude Oil and Petroleum Products into the United States by Country of Origin," "Stocks of Crude Oil and Petroleum Products by Petroleum Administration for Defense (PAD) District," and "Refinery, Bulk Terminal, and Natural Gas Plant Stocks of Selected Petroleum Products by PAD District and State". These preliminary tables are available on the internet and EPUB approximately on the 13th of each month. After incorporation of petroleum exports and crude oil production, these tables are replaced with final tables between the 20th and the 23rd of each month. In addition to the internet, beginning in March 1996, monthly data became available on EIA's CD-ROM called the Energy InfoDisc, which is released quarterly.

Throughout the year, EIA accepts data revisions of monthly data. If a revision is made after the *PSM* has been published, it is referred to as a resubmission. Resubmissions for earlier months are published in Appendix C of the *PSM* and are reflected in the *PSA*.

Beginning with the February 1994 *PSM*, Table H1, "Petroleum Supply Summary" was included to show early estimates of monthly data. The current-month values in Table H1 are preliminary estimates based on weekly submissions. These monthly-from-weekly estimates become available in the *WPSR* and on EPUB on the Wednesday following the first Friday of each month.

Within 5 months of the end of the calendar year, the final monthly values for the previous year are published in the *PSA*. These values reflect all *PSM* resubmissions and other data corrections. The values contained in the *PSA* are EIA's most accurate measures of petroleum supply industry activity.

Table FE1. Average Coverage for Weekly Surveys, 1997 and 1996 (Percent of Final Monthly Volumes Included in Monthly-from-Weekly Sample)

Product	Stocks						Production		Imports	
	Refinery		Bulk Terminal		Pipeline		1997	1996	1997	1996
	1997	1996	1997	1996	1997	1996				
Total Motor Gasoline.....	98	98	93	93	97	97	99	99	98	96
Jet Fuel	98	98	94	94	99	99	99	99	99	98
Distillate Fuel Oil	97	97	88	88	98	98	97	97	90	89
Residual Fuel Oil.....	95	94	91	91	—	—	95	94	95	94
Crude Oil	96	96	—	—	—	—	—	—	94	95

— = Not Applicable.

Source: Energy Information Administration, Petroleum Supply Reporting System.

Factors Affecting Data Accuracy

Maintaining an accurate database is a major goal of EIA. The quality of the data drives the quality of all qualitative and quantitative analyses conducted using these data. Accuracy and timeliness are primary attributes of high quality data. Accuracy of survey data is measured as the closeness of the published values to the true values (i.e., those values that would be obtained if the target population had been correctly surveyed and all the data had been precisely recorded).

Respondents to the monthly surveys have more time to file than the weekly respondents, enabling them to collect, review, and revise their data more carefully than the weekly respondents. Additionally, EIA has more time to edit the monthly data. Also, some weekly respondents report estimates while many monthly respondents extract actual data from accounting systems. Thus, the monthly data are more accurate.

Some sources of error, such as nonresponse, are not totally preventable. Other errors, such as sampling errors, are unique to a particular type of survey. One situation where sampling error occurs is if the group of sampled respondents is dissimilar to the full population. Within the PSRS, only weekly surveys, the Form EIA-819M, "Monthly Oxygenate Telephone Report," and the Form EIA-807, "Propane Telephone Survey," are at risk of having sampling errors. However, all surveys in the PSRS are at risk for nonsampling errors, such as: (1) insufficient coverage of respondents (the survey frame does not include all members of the target population); (2) nonresponse; (3) response error; and (4) internal processing errors such as incorrect data entry. A detailed discussion of factors influencing data accuracy and how they are minimized in the PSRS follows.

Samples and Sampling Error

A sample is a subsection of a universe identifying members of a target population. The weekly surveys are administered to samples of the monthly populations to reduce respondent burden and to expedite the turnaround of data from survey

respondents to the public. As with any sample, the values obtained are different from those obtained if the full universe had been surveyed. Sampling error is the difference between a sample estimate and a population value.

There are five samples, one for each weekly petroleum supply survey, in the WPSRS. For these surveys, the sampling error is minimized by using a minimum 90-percent multi-attribute-cutoff sample from the corresponding monthly survey's frame. At the end of each month, updates are made to the samples and survey frames if a 90-percent coverage was not obtained.

For the weekly surveys, better coverage will most likely reduce sampling error. As shown in Table FE1, 1997 coverage was comparable to 1996. All but one of the 21 product and supply type combinations had coverage of 90 percent or above in 1997. For 13 of the 21 combinations, 1997 coverage increased from 1996. Tabulations were done before rounding of the coverage values. The largest percentage increase from 1996 to 1997 was for total motor gasoline imports, from 96 to 98 percent.

Nonsampling Error

Unlike sampling errors, all survey data, even those from a census survey, are at risk of incurring nonsampling errors. There are two categories of nonsampling errors, random and systematic. With random error, on average, and over time, values will be overestimated by the same amount they are underestimated. Therefore, over time, random errors do not bias the data, but they will give an inaccurate portrayal at any point in time. On the other hand, systematic error is a source of bias in the data, since these patterns of errors are made repeatedly. The following is a discussion of how the four most frequently occurring types of nonsampling error are minimized within the PSRS.

Frame Updates

The list of all companies identified as members of the target population is called a frame. If members of the target population are not included in the frame, there is an

Table FE2. Average Response Rates for Monthly and Weekly Surveys, 1997

Survey Site	Respondents to Monthly Surveys			Respondents to Weekly Surveys		
	Average Universe Size	Average Number of Respondents	Average Reponse Rate ¹	Average Weekly Sample Size	Average Number of Respondents	Average Reponse Rate ²
Refinery.....	258	251	97.2	186	180	96.7
Bulk Terminal.....	310	296	95.5	77	73	94.8
Pipeline	81	81	99.5	43	42	97.1
Crude Oil Stocks	177	174	98.7	84	82	97.3

¹ The average response rates for monthly surveys are calculated by summing the individual monthly response rates and dividing by 12.

² The average response rates for weekly surveys are calculated by summing the individual weekly response rates and dividing by 52.

Note: Percents are calculated before rounding.

Source: Energy Information Administration, Petroleum Supply Reporting System.

undercount of the aggregate data. To diminish the chance of undercounting, the PSRS frames are continually updated. New companies are identified through continual review of petroleum industry periodicals, newspaper articles, and correspondence from respondents. During the frames update, each frame is scrutinized to assure completeness.

Maintaining a Low Nonresponse

Survey respondents are required by law to report to EIA (see Explanatory Note 6 of the *PSM* for a description of action for chronic nonresponse). The 1997 response rates for the weekly surveys and their corresponding monthly surveys are enumerated in Table FE2. Even though the 1997 average response rates for each of the EIA weekly and monthly surveys was excellent, there was a slight decrease for each survey from 1996. Budget cuts at respondent companies had a negative effect on response rates. In addition, budget cuts at EIA reduced funding available for nonrespondent followup.

To mitigate the effect of nonresponse, imputed values are calculated for all nonreported values except monthly imports. Weekly imputed values are the exponentially smoothed mean of that respondent's historical values for that variable. Monthly imputed values are the previous month's value for the particular respondent and variable. For imports, however, there is a great deal of fluctuation from one reference period to another, with respondents frequently having no imports of a particular product. As a result, zero is the value imputed for nonreported cells on the monthly survey. In addition, the monthly imports are collected and published at a much greater level of detail than the weekly imports, which makes imputation impractical.

Reducing Response Error

Over the past 5 years, many structural and procedural improvements to the PSRS system have been made in order to reduce the problem of nonsampling errors. One such improvement has been the increased participation in the PEDRO system, which permits all weekly and monthly survey data except the Form EIA-819M and Form EIA-807 to be submitted to EIA electronically. A respondent entering values via PEDRO may execute edit routines prior to transmission of the survey responses. These routines include consistency and outlier (extreme value)

checks of the data. Unusual or nonreported cells are flagged and, prior to transmission of the data, a representative of the company is able to review and verify or correct data in the flagged cells.

Even with sophisticated edit checks, response error (the difference between the reported value and the actual value) remains the most likely cause of data inaccuracy. The weekly surveys are more susceptible to response error since some of their values are estimates. Many monthly respondents abstract their actual data from accounting systems and thus are generally more accurate.

Maintaining accurate accounting records, however, does not ensure against response error. For example, numbers can be transposed within the correct cell; an otherwise correct value may be entered in the wrong cell; a respondent may misinterpret the intent of a question; or the wrong units may be used.

Survey Clarity

The terms, layout, and definitions on all survey forms are periodically reviewed for completeness, clarity, and consistency across surveys. At regular intervals, survey intent, as well as what data are collected, are subject to industry and government review. To the extent possible, industry changes in terminology and practice are incorporated into the PSRS on an ongoing basis.

Data Assessment

Each of the variables included in these analyses is of current and historical interest. Of the 66 variables for which both *PSM* and *PSA* values were published, only 61 of them were published weekly throughout 1997. For each variable, six measures of accuracy were calculated to compare the differences between the MFW and *PSM* values relative to the *PSA* values.

- **Error** is the difference between the estimate or interim value and the final value for a given month. For inputs, production, stock change, imports, exports, and product supplied, values are expressed in units of thousands of barrels per day. For stocks, values are expressed in units of thousands of barrels.

MFW Error = MFW Volume - *PSA* Volume

PSM Error = *PSM* Volume - *PSA* Volume

- **Percent Error** is the error for a given month divided by the final value for a given month, and multiplied by 100.

$$\text{MFW Percent Error} = \frac{\text{MFW Error}}{\text{PSA Volume}} \times 100$$

$$\text{PSM Percent Error} = \frac{\text{PSM Error}}{\text{PSA Volume}} \times 100$$

- **Mean absolute error** is the weighted average over the 12 months of the year of the absolute values of the errors for each month. The mean absolute error measures the average magnitude of the revisions that took place over a year. Outliers increase the mean absolute error. The number of days in the month is used for weighting all product categories except stocks. Stocks are weighted equally for each of the 12 months.
- **Mean absolute percent error** is the weighted average over the 12 months of the year of the absolute values of the percent errors. It provides a measure of the average magnitude of the revisions relative to final values. The mean absolute percent error has an inverse relationship with data accuracy; i.e., the smaller the mean absolute error, the closer the interim data are to the final data; conversely, the larger the mean absolute percent error, the greater the difference in the interim value and the final value. Outliers inflate the mean absolute percent error.
- **Range** is the difference between the smallest and largest percent errors. The range shows the dispersion of the percent differences between interim and final values.
- **Median** of the percent errors is the point at which half the values are higher and half are lower. Unlike the mean, the median is not affected by an outlier. In these analyses, each distribution has 12 observations. The median is the average of the sixth and seventh ordered observation.

The average final absolute volumes and the mean absolute percent error for MFW estimates and *PSM* interim values for 1997 and 1996 are presented in Table FE3. The average final absolute volumes are presented to give the reader an idea of the magnitude of these volumes. Variables with very small volumes are prone to larger percent changes because a modest volume change is being compared to a small final volume. The mean absolute error and the size of the volumes involved must both be included in the interpretation of data accuracy.

The 1997 MFW mean absolute percent errors which were within 2 percent of their respective *PSA* values (27 of the 61 MFW series), and the 1997 *PSM* mean absolute percent errors which were within 1 percent of their *PSA* values (45 of the 66 *PSM* series), are distinguished by a single asterisk. Mean

absolute percent errors that were greater than 10 percent are marked by a double asterisk. There were 8 such MFW series and 3 *PSM* series.

For 1997, 7 of the 11 weekly production series decreased in mean absolute percent error from 1996. Thirteen of the 14 production series have a single asterisk in the *PSM* column, indicating a mean absolute percent error of less than 1 percent from the *PSA*. The decrease in the MFW mean absolute percent error for oxygenated motor gasoline production is due to a resolution of reporting deficiencies. Weekly fuel ethanol supply and disposition data are not available; therefore, the weekly oxygenated motor gasoline field production is based on the latest available monthly value.

The single asterisks in Table FE3 by the stock series show that, as in prior years, the stock values for both MFW estimates and *PSM* interim values are very close to the final *PSA* values. A major exception is the double asterisk shown by the MFW percent error for oxygenated motor gasoline stocks. The increase is related to the average absolute volume. Fuel ethanol and methyl tertiary butyl ether stocks are not collected weekly, but are collected on the Form EIA-819M, "Monthly Oxygenate Telephone Report." The survey provides production data and preliminary stock data from a sample of respondents reporting on the monthly surveys and from the universe of oxygenate producers. These data are displayed in Appendix D of the *PSM*. Interim data are collected later on the monthly surveys and published in the *PSM*.

Stock change is the difference between stocks at the beginning of the month and stocks at the end of the month. Since the monthly change in stock levels is small compared to the stock levels themselves, a large percent error in stock change can occur when the percent errors in stock levels are small.

Crude oil stock change is one of the components in the calculation of unaccounted for crude oil (calculated disposition minus calculated supply of crude oil). For both the MFW and the *PSM* numbers, the volume of the unaccounted for crude oil may be increased by a combination of factors including an understatement of imports, an overstatement of exports, an understatement of crude oil production, an understatement of stock withdrawals, and an overstatement of crude oil inputs. The overstatement of crude oil inputs can be caused by injections along crude oil pipelines of natural gas liquids. When refiners receive this mixture, they process it as crude oil. As seen in Table FE3, the production, imports, and refinery inputs of crude oil have a small mean absolute percent error relative to crude oil stock change. There was a large decrease in mean absolute percent error for 1997 MFW and *PSM* values relative to 1996 due to corrections of misreported data.

For petroleum products, stock change is a component in the calculation of product supplied (representing the consumption of petroleum products). Unlike the other variables, stock change values can be negative. Stock change thus has an added

Table FE3. Summary Statistics for Differences Between Interim and Final Data, 1997 and 1996

Variable	PSA Average Absolute Volumes		Monthly-from-Weekly Mean Absolute Percent Error		PSM Mean Absolute Percent Error	
	1997	1996	1997	1996	1997	1996
Crude Oil Production (thousand barrels/day)	6,452	6,465	* 0.87	0.79	* 0.78	0.50
Refinery Operations						
Refinery Crude Oil Inputs (thousand barrels/day)	14,662	14,195	* 0.36	0.32	* 0.24	0.19
Operable Utilization Rate (percent)	95	94	* 1.24	1.20	* 0.28	0.70
Production (thousand barrels/day)						
Total Production	18,918	18,467	—	—	* 0.17	0.25
Refinery Production	16,759	16,324	* 1.82	1.44	* 0.16	0.25
Finished Motor Gasoline.....	7,870	7,647	* 0.83	0.96	* 0.18	0.70
Reformulated Motor Gasoline	2,406	2,221	* 1.98	2.97	* 0.86	1.83
Oxygenated Motor Gasoline	587	454	** 13.04	56.41	3.62	3.09
Other Motor Gasoline.....	4,877	4,972	* 1.81	4.00	* 0.40	0.60
Jet Fuel.....	1,554	1,515	* 1.25	1.27	* 0.41	0.11
Distillate Fuel Oil.....	3,392	3,316	* 1.50	0.42	* 0.27	0.30
Low Sulfur Distillate Fuel Oil	2,162	2,084	* 1.17	1.72	* 0.66	0.25
High Sulfur Distillate Fuel Oil	1,229	1,232	3.46	2.52	* 0.81	2.77
Residual Fuel Oil	708	726	3.96	4.17	* 0.39	0.80
Other Products	5,394	5,264	—	—	* 0.70	0.59
Propane	1,092	1,044	—	—	* 0.16	0.18
Other Products Refinery Production	3,362	3,204	7.86	7.18	* 0.13	0.58
Stocks (thousand barrels)						
Total Stocks	1,552,154	1,525,640	* 0.71	0.57	* 0.06	0.07
Total Stocks, excl. SPR	988,701	944,599	* 1.12	0.95	* 0.10	0.12
Total Crude Oil Stocks.....	874,713	884,400	* 0.27	0.27	* 0.07	0.11
Crude Oil Stocks, excl. SPR.....	311,260	303,359	* 0.77	0.76	* 0.21	0.31
SPR Stocks	563,453	581,041	* 0.00	0.04	* 0.00	0.00
Refined Products Stocks	677,441	641,240	* 1.41	1.43	* 0.07	0.10
Total Motor Gasoline Stocks	200,295	200,699	* 0.77	1.03	* 0.12	0.22
Reformulated Motor Gasoline Stocks	39,759	39,413	3.51	2.18	* 0.40	1.24
Oxygenated Motor Gasoline Stocks	957	1,522	** 26.70	22.23	** 14.23	8.92
Other Motor Gasoline Stocks.....	117,448	118,855	* 1.30	1.56	* 0.20	0.20
Jet Fuel Stocks.....	42,162	38,246	* 1.29	1.68	* 0.84	0.20
Distillate Fuel Oil Stocks.....	120,913	106,959	* 1.75	1.22	* 0.24	0.19
Low Sulfur Distillate Fuel Oil Stocks	63,474	59,291	* 1.91	1.67	* 0.45	0.28
High Sulfur Distillate Fuel Oil Stocks.....	57,439	47,668	2.27	2.48	* 0.24	0.33
Residual Fuel Oil Stocks	38,604	36,367	* 1.70	2.69	* 0.22	0.27
Other Products Stocks.....	275,468	258,969	2.39	3.30	* 0.18	0.18
Propane Stocks.....	44,947	38,386	2.34	4.89	* 0.29	0.48
Fuel Ethanol Stocks.....	2,866	1,425	6.46	5.62	* 0.62	1.39
Methyl Tertiary Butyl Ether Stocks	8,920	9,718	7.64	6.26	1.40	0.62
Stock Change (thousand barrels/day)						
Total Stock Change	587	563	** 73.10	84.30	7.60	7.56
Total Crude Oil Stock Change.....	309	211	** 45.20	1,258.53	9.51	220.89
Refined Products Stock Change	504	535	** 82.79	71.92	** 17.15	8.08
Imports (thousand barrels/day)						
Total Imports	10,162	9,478	3.01	2.68	2.46	0.84
Total Crude Oil Imports	8,225	7,508	2.63	1.75	2.72	0.39
Crude Oil Imports, excl. SPR.....	8,225	7,508	2.63	1.75	2.72	0.39
SPR Imports.....	0	0	* 0.00	0.00	* 0.00	0.00
Refined Products Imports.....	1,936	1,971	5.62	10.37	1.35	2.74
Finished Motor Gasoline Imports.....	309	336	6.20	13.68	2.32	4.16
Reformulated Motor Gasoline Imports	161	174	9.05	15.10	2.99	6.27
Oxygenated Motor Gasoline Imports	0	0	* 0.00	0.00	* 0.00	0.00
Other Motor Gasoline Imports.....	148	163	** 16.05	22.45	2.27	3.61
Jet Fuel Imports.....	91	111	9.33	10.75	2.22	2.87

See footnotes at end of table.

Table FE3. Summary Statistics for Differences Between Interim and Final Data, 1997 and 1996 (Continued)

Variable	PSA Average Absolute Volumes		Monthly-from-Weekly Mean Absolute Percent Error		PSM Mean Absolute Percent Error		
	1997	1996	1997	1996	1997	1996	
Distillate Fuel Oil Imports.....	228	230	6.89	11.31	*	0.66	2.45
Low Sulfur Distillate Fuel Oil Imports	103	112	7.90	9.92		4.34	2.84
High Sulfur Distillate Fuel Oil Imports	125	118	9.65	19.54		3.71	2.29
Residual Fuel Oil Imports	194	248	** 11.91	13.03		3.35	0.79
Other Products Imports	1,114	1,045	8.67	15.95		2.01	5.63
Propane Imports	113	119	—	—	**	12.67	2.22
Exports (thousand barrels/day)							
Total Exports	1003	981	8.08	6.31	*	0.02	0.00
Crude Oil Exports	108	110	** 71.94	41.76	*	0.03	0.00
Refined Products Exports.....	896	871	8.13	7.13	*	0.02	0.00
Total Net Imports (thousand barrels/day)	9,158	8,498	2.93	3.03		2.72	0.94
Products Supplied (thousand barrels/day)							
Total Products Supplied	18,620	18,309	* 1.36	1.49	*	0.27	0.41
Finished Motor Gasoline Supplied.....	8,017	7,891	* 0.73	1.43	*	0.23	0.52
Jet Fuel Supplied.....	1,599	1,578	* 1.97	3.07	*	0.84	0.43
Distillate Fuel Oil Supplied.....	3,435	3,365	2.18	1.88	*	0.37	0.30
Residual Fuel Oil Supplied	797	848	6.54	6.65	*	0.88	1.10
Other Products Supplied	4,773	4,627	3.77	3.98	*	0.59	0.73
Propane Supplied	1,170	1,136	—	—		1.21	0.47

— = Not Applicable.

* = For 1997 MFW values, mean absolute percent error less than or equal to 2; for 1997 PSM values, mean absolute percent error less than or equal to 1.

** = For 1997, mean absolute percent error greater than 10.

SPR = Strategic Petroleum Reserve

Notes: •Error is the difference between Monthly-from-Weekly estimates or interim monthly data published in the *Petroleum Supply Monthly* and the final value as published in the *Petroleum Supply Annual*. Percent error is the error multiplied by 100 and divided by the final published value. Mean absolute error is the weighted average of the absolute errors. Mean absolute percent error is the weighted average of the absolute percent errors. The number of days in the month is used for weighting all product categories except stocks. Stocks are weighted equally for each of the 12 months. •Totals may not equal sum of components due to independent rounding. •All components of Other Products are not displayed.

Source: Energy Information Administration, Petroleum Supply Reporting System (including U.S. Bureau of the Census data).

dimension by which to evaluate accuracy; this is the correctness of the direction of the change. Table FE4 provides a measure of accuracy of the direction of MFW and PSM stock change values for 1997 and 1996. For 1997 MFW total stock change values, only one month differed in direction of the PSA values compared to four months in 1996. The 1997 direction of PSM stock change values was correct 100% of the time in all three stock change categories. The direction of PSM stock change values was correct only 83 percent of the time in 1996.

For imports, one reason for the large mean absolute percent errors in the MFW values is that shipments do not always arrive during the week in which they were expected. This has a greater impact when the end of the month occurs in the middle of the week. Only three of the 15 MFW import series in Table FE3 showed an increase in mean absolute percent error from 1996 to 1997 compared to eight from the 1995 to 1996 comparison performed last year. For the PSM, seven of the 16 import series increased in mean absolute percent error compared to last year's increase of 13.

Table FE4. Number of Months In Which the Direction of Non-Final Stock Change Values Differed From PSA

	Number of Months	
	1997	1996
Total Stock Change		
MFW and PSA Values.....	1	4
PSM and PSA Values.....	0	0
Crude Stock Change		
MFW and PSA Values.....	1	1
PSM and PSA Values.....	0	2
Refined Products Stock Change		
MFW and PSA Values.....	3	2
PSM and PSA Values.....	0	0

Source: Energy Information Administration, Petroleum Supply Reporting System.

With the exception of refinery receipts in the Virgin Islands, EIA does not collect export data. They are gathered by the U.S. Customs Service on a monthly basis and are compiled by the U.S. Bureau of the Census. They are received by EIA on a monthly basis approximately 7 weeks after the close of the reporting month. The weekly estimates for exports are projections based on past monthly data. Because the export data are highly variable, it is difficult to obtain estimates of comparable quality to domestic estimates.

Products supplied is the calculation of field production, plus refinery production, plus imports, plus unaccounted for crude oil, minus stock change, minus crude oil losses, minus refinery inputs, minus exports. Therefore, the accuracy of products supplied is affected by the individual components.

Box and Whisker Plots

Example 1 in the shaded box titled “Structure of Box and Whisker Plots,” is a simplified illustration of the box and whisker plots that follow. The box and whisker plots map the 5-year trends in historical accuracy of weekly estimates and monthly interim values. The details provided by the box and whisker plots include: historical trends, the range of monthly percent errors, direction of the error (i.e., overestimation or underestimation), and the identification of unusual values.

Each box and whisker plot is placed on a graph, where the horizontal axis represents the year and the vertical axis represents the percent error. The center horizontal line for all the box and whisker plots is zero percent error. For each variable studied, a pair of charts, each containing five box and whisker plots (one for each year, from 1993 through 1997), are presented side-by-side; the chart on the left contains the percent errors for the MFW estimates, and the chart on the right contains the percent errors for the *PSM* values. To facilitate the comparison of MFW percent errors and the *PSM* percent errors, the plots have the same scale.

The position of the box along the y-axis denotes whether the MFW or *PSM* values are predominantly overestimates or underestimates of the *PSA* values. For example, if the majority of the MFW values were overestimates, more than half of the box would be above the zero percent error line.

Crude Oil Production and Crude Oil Inputs

Crude oil production data are not collected through any of EIA’s surveys. EIA’s Dallas Field Office assembles data collected from State agencies responsible for measuring crude oil production. Based on historical trends and data reported on Form EIA-182, “Domestic Crude Oil First Purchase Report,” EIA estimates weekly and monthly production. Final estimates based on revised Form EIA-182 data are published in the *PSA*. Figure FE3 presents errors of MFW and *PSM* values relative to

PSA values for crude oil production and inputs. Over the last 5 years, both MFW and *PSM* crude oil production values have been quite close to the *PSA* values. In 1997, all but one of the MFW values were underestimated. The median for the percent errors had the largest absolute percent error of -0.85 percent compared to prior years. One outlier in January (1.45) was due to resubmissions. Similarly, the median percent error for the 1997 *PSM* errors was -0.68, resulting in the largest absolute percent over the 5-year period. The range of the 1997 *PSM* percent errors, ranging from -1.57 to 0.65 percent, was the largest range for the 5 years studied and June 1997 (-1.57) had the largest absolute percent error over the 60-month period. The small percent errors of both MFW and *PSM* crude oil values demonstrate the consistency and precision of EIA’s estimation procedures for weekly and monthly crude oil production.

For 1997, all of the MFW percent errors for refinery crude oil inputs were within 1 percent of the final values. Historically, the *PSM* refinery crude oil inputs have been extremely close to their final values. For 1997, all of the *PSM* percent errors were within 0.44 percent. One month did not have a revision; whereas, all other months were underestimated. The median (-0.24) for the 1997 *PSM* percent errors had the largest absolute percent for the 5-year period. The ranges of the MFW and *PSM* percent errors were the smallest of all the other plots analyzed.

Product Production

As expected, *PSM* interim values for production of each of the four major petroleum products were superior to their comparable MFW estimates. Figures FE4 and FE5 contain the box and whisker plots for motor gasoline and distillate fuel oil production, and residual fuel oil and jet fuel production, respectively.

The motor gasoline production percent errors, displayed in Figure FE4, had the smallest range (2.40) over the 5-year period. Compared to 1996, the 1997 *PSM* interim values greatly improved. Over the 5-year period, the 1997 range of percent errors was the smallest (0.62).

For the 1997 distillate fuel oil production MFW values, all but one month were overestimated. As in prior years, *PSM* interim values for distillate fuel oil production were close to final values. All of the percent errors for 1997 were within 0.72 percent; and in 58 of the last 60 months, *PSM* percent errors have been within 1 percent of the final values.

The box and whisker plots for residual fuel oil production and jet fuel production are shown in Figure FE5. Similar to 1996, the 1997 distribution of MFW percent errors for residual fuel oil ranged from -9.81 to 6.32 percent. All of the *PSM* percent errors were within 1 percent of the final values except for one outlier of -1.66 occurring in October due to revisions.

Structure of Box and Whisker Plots

All box and whisker plots discussed in this article are the visual presentation of a variable's distribution of 12 values of percent errors for either MFW or PSM values relative to PSA values for a given year. In general, box and whisker plots group data, ordered from smallest to largest, into four areas of equal frequency, quartiles, and show the range and dispersion of data within the quartiles. Sometimes the values of quartiles must be interpolated, i.e., if there are two values that meet the criteria of a quartile, then the average of the two must be taken. Presented below is a discussion of components of box and whisker plots and how they apply to the 12-value distribution illustrated in Example 1: -35, -20, -11, -9, 0, 0, 0, 0, 4.5, 5.5, 15, and 20.

- **First Quartile**

Twenty-five percent of the values are equal to or below the first quartile. In Example 1, the first quartile is the average of the third and fourth ordered observations, i.e., $(-11+(-9))/2=-10$. The first quartile demarcates the lower boundary of the box.

- **Second Quartile**

The second quartile is the median, and it intersects the box. Fifty percent of the observations are equal to or below the median; in our example, the values of these six observations are: 0, 0, -9, -11, -20, and -35. Also, for this example, the median is the average of the sixth and seventh value, 0, i.e., $(0+0)/2$. The plot provides the value of the median (the second quartile) as well as information on how the median compares in magnitude to the rest of the observations. Outliers distort the magnitude of the mean, whereas a median is not distorted since it is the actual value that falls in the middle of the distribution. Since outliers have occurred in the distributions of values of PSRS variables, a median is preferred to a mean when assessing accuracy.

- **Third Quartile**

Seventy-five percent of the observations (9 in this case) have values equal to or below the third quartile. In Example 1, the third quartile is 5, i.e., $(4.5+5.5)/2$. The third quartile demarcates the upper boundary of the box.

- **Box**

The box contains half of all the values. In Example 1, as well as in each box found in Figures FE3-FE11, a minimum of six values are contained within the box. The interquartile range is the length of the box, the difference between the first and third quartiles. The interquartile range for Example 1 is 15, i.e., $5-(-10)$.

- **Whiskers**

Each whisker extends out from the box, one from the first quartile and the other from the third quartile, to the most extreme value that still falls within 1.5 times the interquartile range. In Example 1, a whisker extends from the third quartile, 5, to 20, which is the maximum value and is within 1.5 interquartile ranges of 5 (as it is less than $5+(1.5*15)=27.5$). Also in Example 1, the lower whisker extends from the first quartile -10, to -20, which is the lowest value of the distribution within 1.5 interquartile ranges of the first quartile.

- **Fourth Quartile**

The fourth quartile is the maximum value of the distribution. In Example 1, the fourth quartile, 20, also demarcates the upper value of the top whisker as it is within 1.5 interquartile ranges of the third quartile.

- **Outlier**

An outlier, identified as an asterisk, is an observation that is more than 1.5 interquartile ranges greater than the third quartile, or more than 1.5 interquartile ranges less than the first quartile. In Example 1, there is one outlier, -35. It is less than the lower whisker's threshold value, which is -32.5 $(-10-(1.5*15))$. The importance of the occurrence of an outlier depends on the distribution of the variable. If the interquartile range is very tight and the outlier is in close proximity, then there is little concern about the occurrence of that outlier. (See Figure FE3, MFW vs PSA of Crude Oil Production for 1997.)

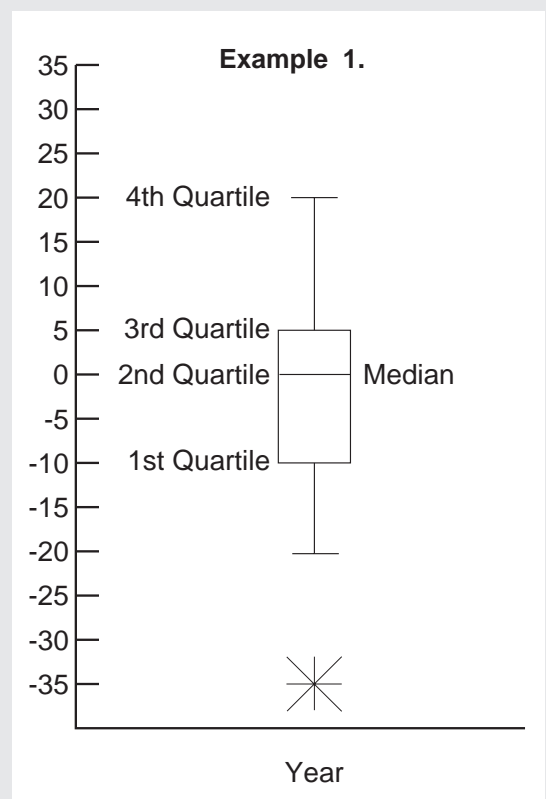
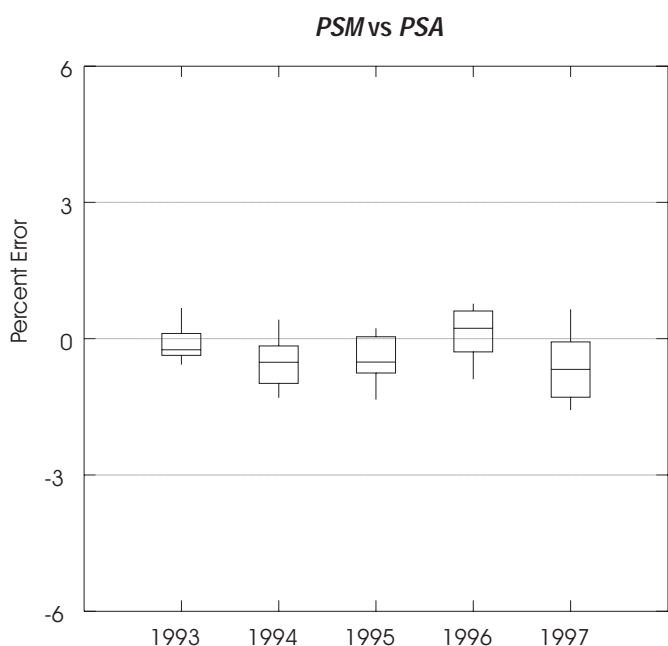
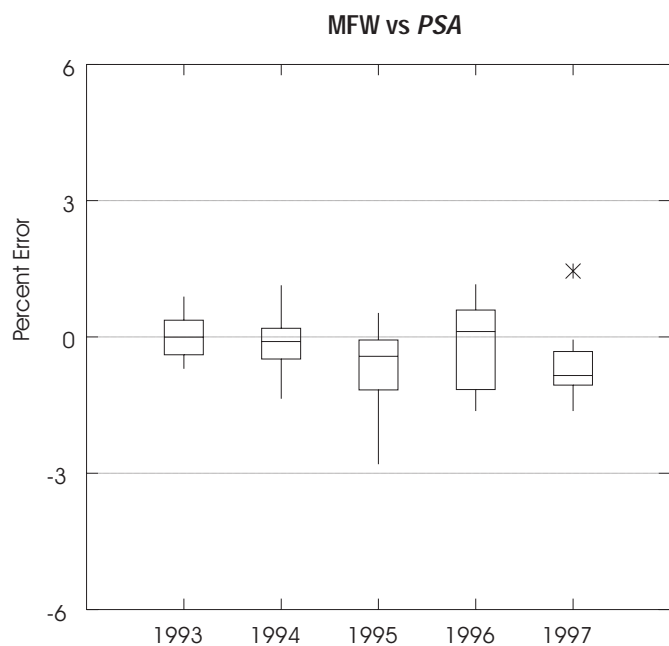
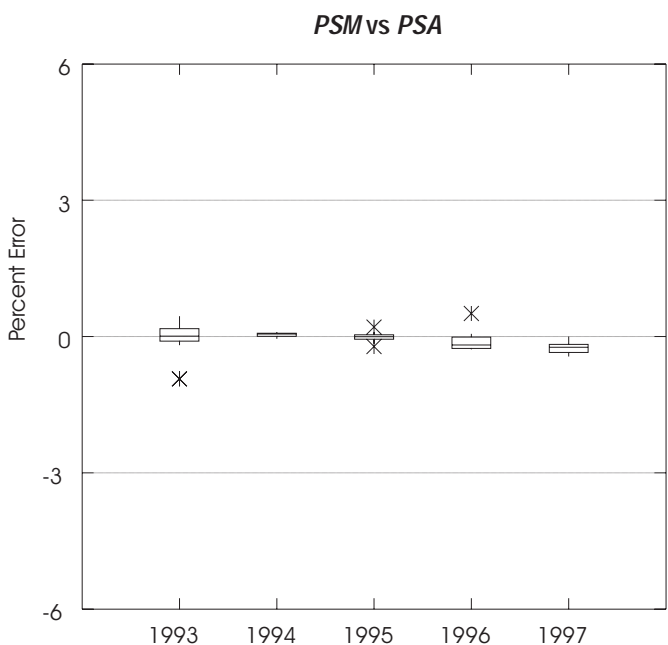
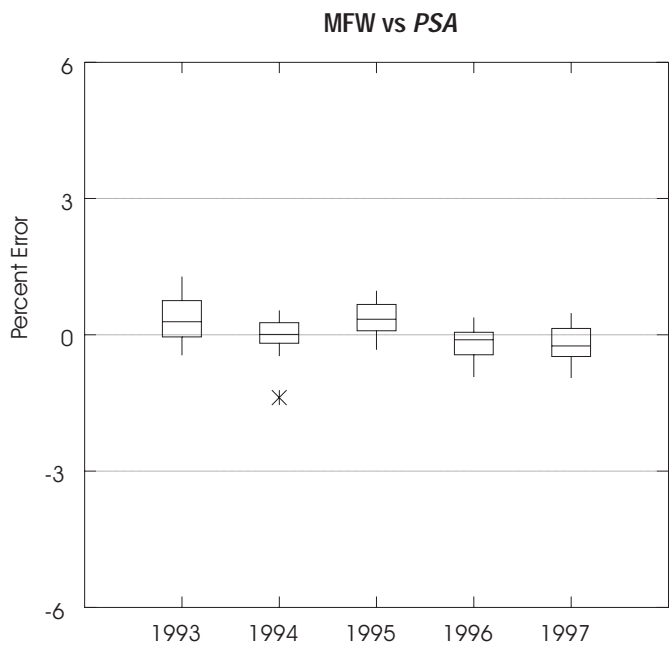


Figure FE3. Range of Percent Errors for MFW and PSM Crude Oil Production and Refinery Crude Oil Inputs Data, 1993 - 1997

Crude Oil Production



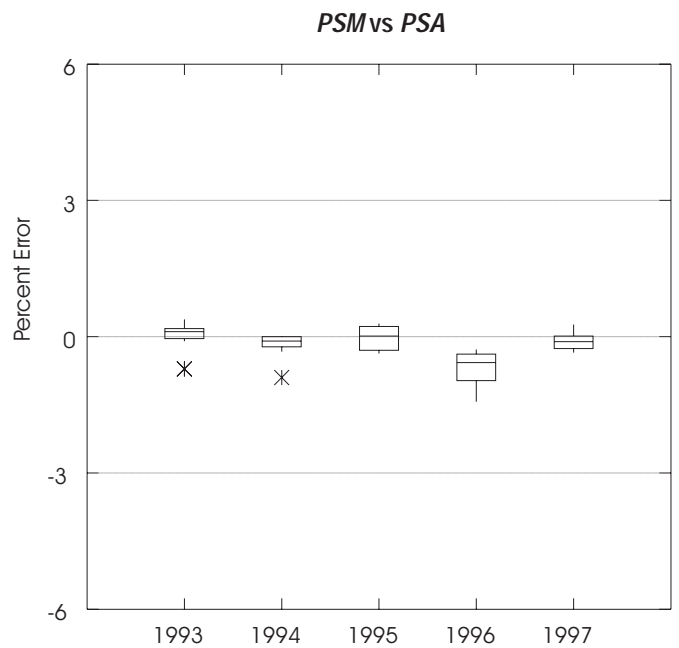
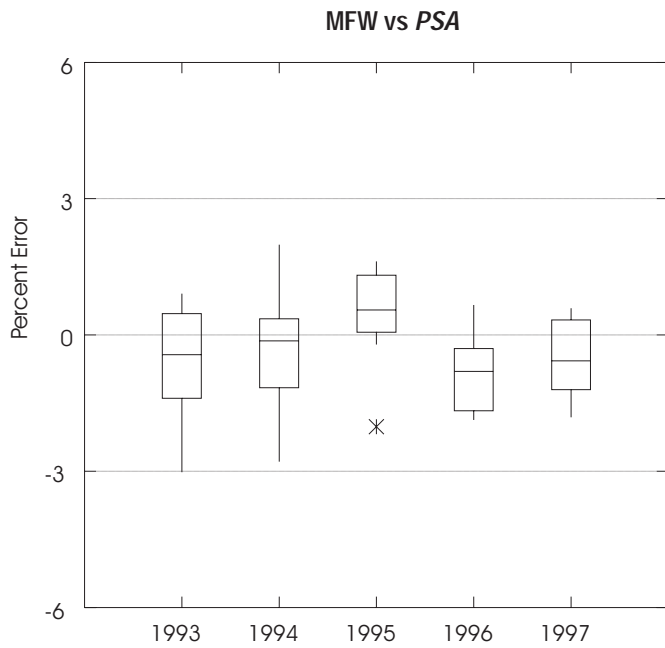
Refinery Crude Oil Inputs



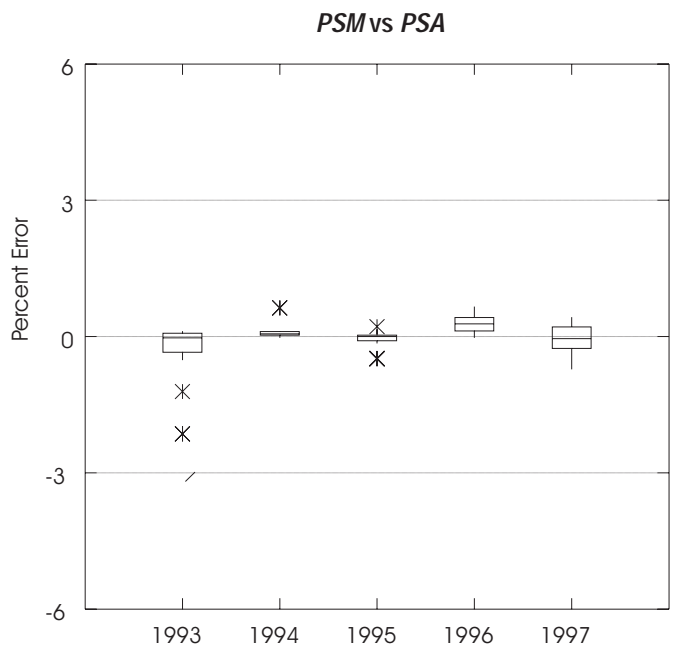
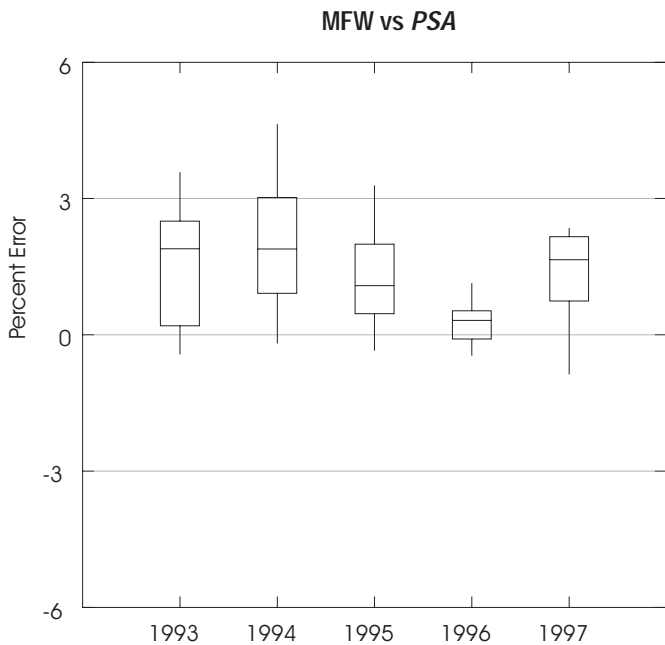
Source: Energy Information Administration, Petroleum Supply Reporting System.

Figure FE4. Range of Percent Errors for MFW and PSM Motor Gasoline and Distillate Fuel Oil Production Data, 1993 - 1997

Motor Gasoline Production



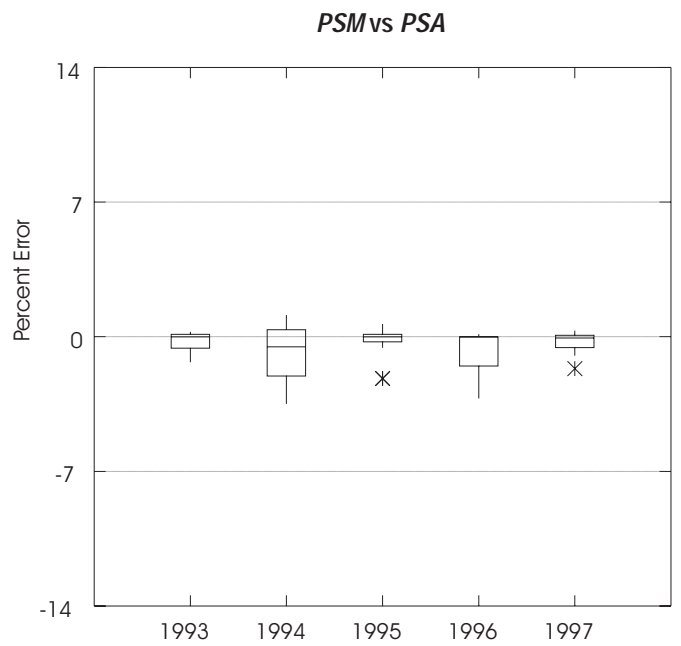
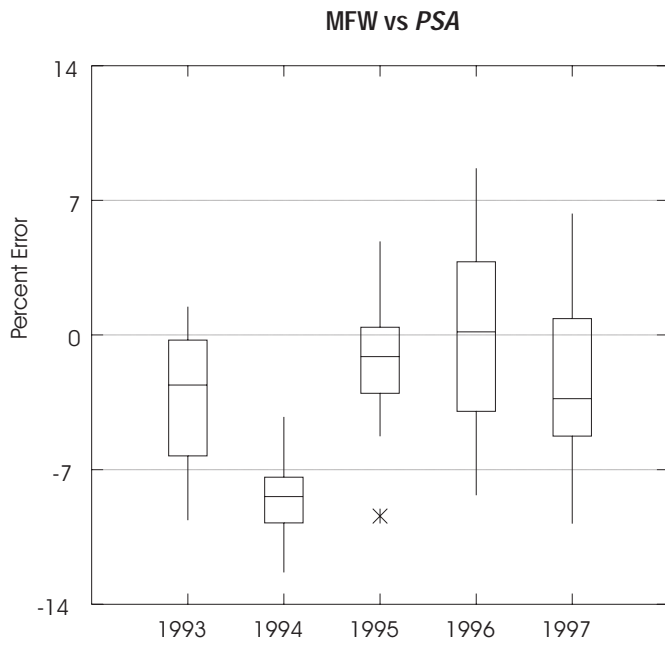
Distillate Fuel Oil Production



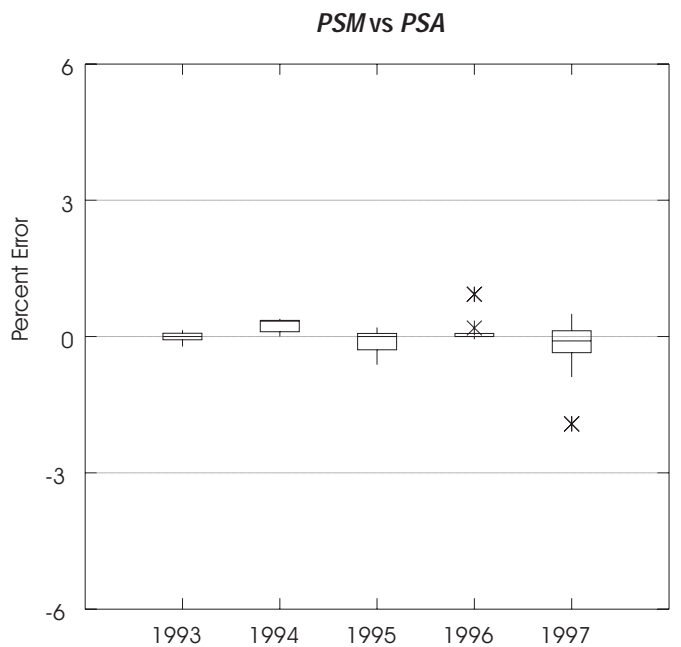
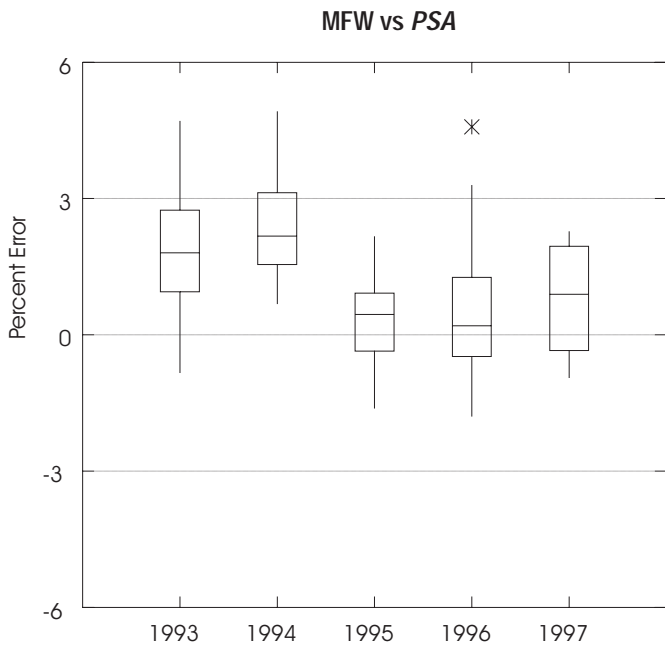
Source: Energy Information Administration, Petroleum Supply Reporting System.

Figure FE5. Range of Percent Errors for MFW and PSM Residual Fuel Oil and Jet Fuel Production Data, 1993 - 1997

Residual Fuel Oil Production



Jet Fuel Production



Source: Energy Information Administration, Petroleum Supply Reporting System.

The range of percent errors (3.23) for the 1997 MFW values of jet fuel production was the smallest over the 5-year period, ranging from -0.95 to 2.28 percent. Conversely, the range for the *PSM* percent errors was the largest over the 5-year period, due to an outlier in February (-1.92) due to resubmissions. This outlier was the largest percent error and the only percent error greater than 1 percent over the 60-month period.

Stocks

Figures FE6, FE7, and FE8 show the yearly distribution of percent errors for stocks of crude oil, motor gasoline, distillate fuel oil, residual fuel oil, jet fuel, and propane. Figure FE6 shows the box and whisker plots for crude oil stocks and motor gasoline stocks. Similar to the previous four years, the 1997 MFW percent errors for crude oil ranged from -1.43 to 1.18 percent. The 1997 *PSM* interim values were mostly overestimates and were within 0.63 percent of the *PSA*. The percent errors had a tight distribution around the median of 0.11 percent.

For 1997, all but one of the MFW estimates for motor gasoline stocks were underestimated. All of the *PSM* percent errors were within 0.28 percent and the median was close to zero. The 1997 ranges for the MFW and *PSM* percent errors were the smallest over the 5-year period, 2.22 and 0.49 percent, respectively.

Figure FE7 shows box and whisker plots for distillate and residual fuel oil stocks. Similar to prior years, most of the MFW estimates for 1997 distillate fuel oil stocks were underestimates. In contrast to 1996, the *PSM* interim values were mostly overestimates of the final *PSA* and were within 0.56 percent.

Residual fuel oil typically has larger percent errors than other stock series. The 1997 range, 8.95 percent, for the MFW percent errors was the largest over the 5-year period caused by an outlier in March (-5.30) due to revisions. The distribution of 1997 *PSM* percent errors was tightly grouped around the smallest median (-0.02) over the 5-year period. The two outliers occurred in September (1.05) and October (-0.63) due to resubmissions during those months.

The box and whisker plots for jet fuel stocks and propane stocks are shown in Figure FE8. For 1997, the percent errors for jet fuel stocks ranged from -4.58 to 1.64 percent with an outlier in June (-4.58) due to revisions. The 1997 range (2.31) for the *PSM* percent errors was the largest over the 5-year period with August (-2.09) having the largest absolute percent error over the past 60 months.

Similar to prior years, most of the 1997 MFW propane stocks underestimated the *PSA* values. In contrast to 1996 in which the range was the largest, the range for the 1997 percent errors was the smallest over the 5-year period. All but one of the *PSM* percent errors were within 0.77 percent of the *PSA* values. The four

outliers in January, February, April, and September were the result of large resubmissions for those months.

Imports

Figures FE9, FE10, and FE11 show the yearly distributions of percent errors for the imports of crude oil and four products: motor gasoline, distillate fuel oil, residual fuel oil, and jet fuel. Because of the irregularity of imports for crude oil and petroleum products, the magnitude and range of percent errors for both the MFW and the *PSM* imports numbers can be expected to be much larger and wider than for production and stocks.

Figure FE9 shows that most of the 1997 MFW estimates of crude oil imports were underestimated. There were two outliers: May (-7.44) and October (-9.72) due to resubmissions for those months. The October percent error was the largest over the 60-month period. In contrast to prior years, all of the *PSM* interim values underestimated the final values. The 1997 median of -3.02 percent had the largest absolute percent error over the 5-year period and May (-4.32) had the largest absolute percent error over the 60-month period. Several respondents had large crude oil import revisions and additions in 1997.

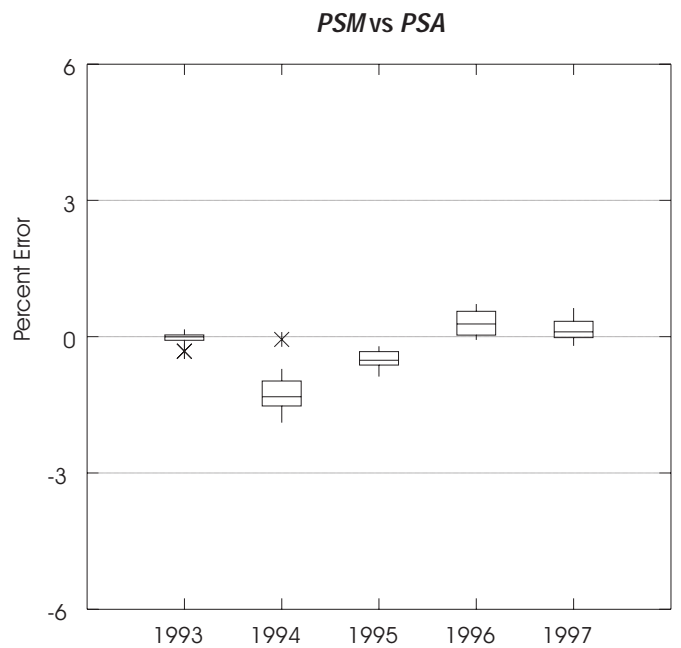
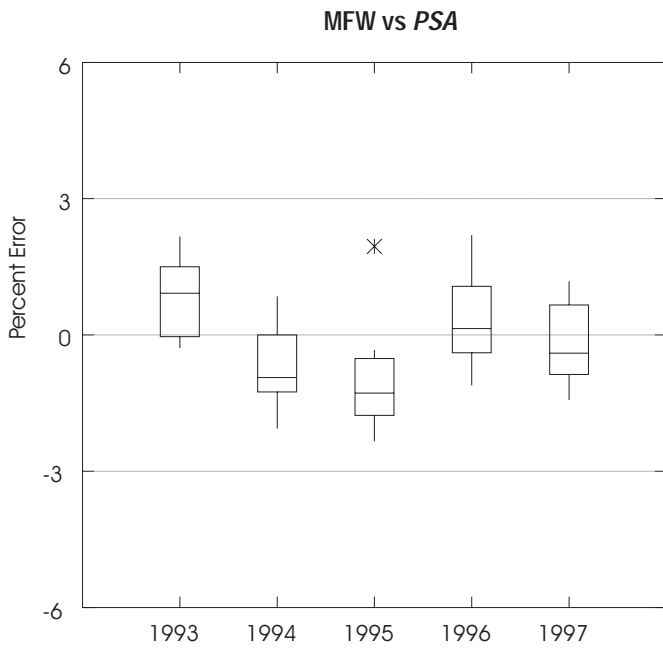
The distributions of percent errors of the MFW estimates and *PSM* interim values for 1993 through 1997 of motor gasoline and distillate fuel oil imports are shown in Figure FE10. The 1997 MFW range and box for motor gasoline imports was the smallest over the past 5 years, ranging from -16.36 to 14.33. One outlier in April (14.33) was due to revisions. During 1997, there were 5 months that had resubmissions for *PSM* motor gasoline imports. Two of these months, July (-11.00) and October (6.19), were outliers due to revisions during those months.

Most of the 1997 MFW estimates for distillate fuel oil imports were underestimated. The range (19.29) of percent errors was the smallest over the 5-year period, ranging from -11.87 to 7.42 percent. During 1997, only one month had resubmissions occurring in November which made the *PSM* percent error an outlier (-8.00).

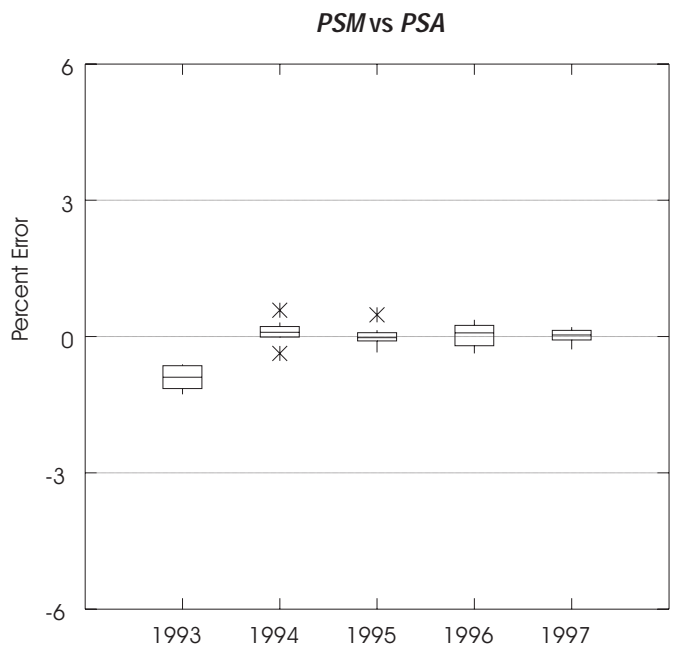
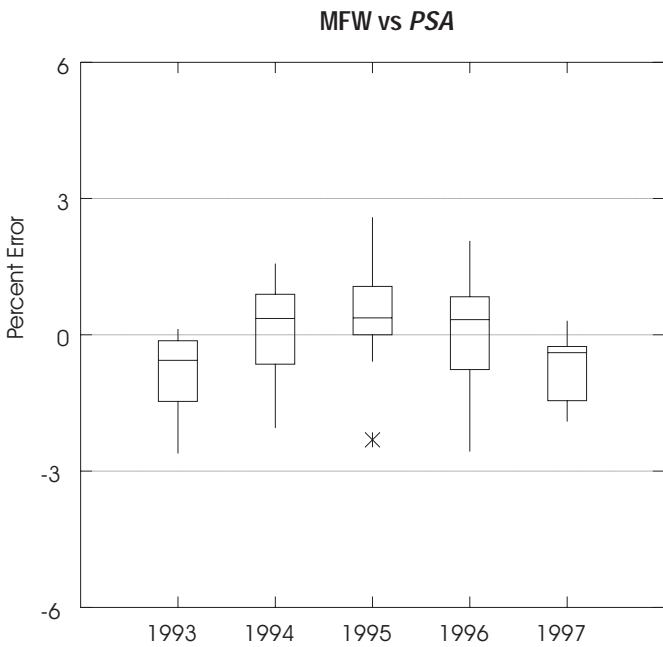
Figure FE11 shows the box and whisker plots for residual fuel oil imports and jet fuel imports. In contrast to prior years, more of the 1997 MFW estimates for residual fuel oil imports were overestimates. Over the 5-year period, 1997 had the largest range (54.62) and the first positive median (4.81). The range (23.79) for the *PSM* percent errors was the largest over the 5-year period, ranging from -10.78 to 13.01 percent. Four of the 5 resubmissions for 1997 *PSM* interim values were outliers: January, July, September, and November. The percent error in September (13.01) was the largest error over the 60 months studied. The ranges of the MFW and *PSM* residual fuel oil percent errors were the largest of all plots analyzed in 1997.

Figure FE6. Range of Percent Errors for MFW and PSM Crude Oil Stocks Excluding Strategic Petroleum Reserve (SPR) and Motor Gasoline Stocks Data, 1993 -1997

Crude Oil Stocks Excluding SPR



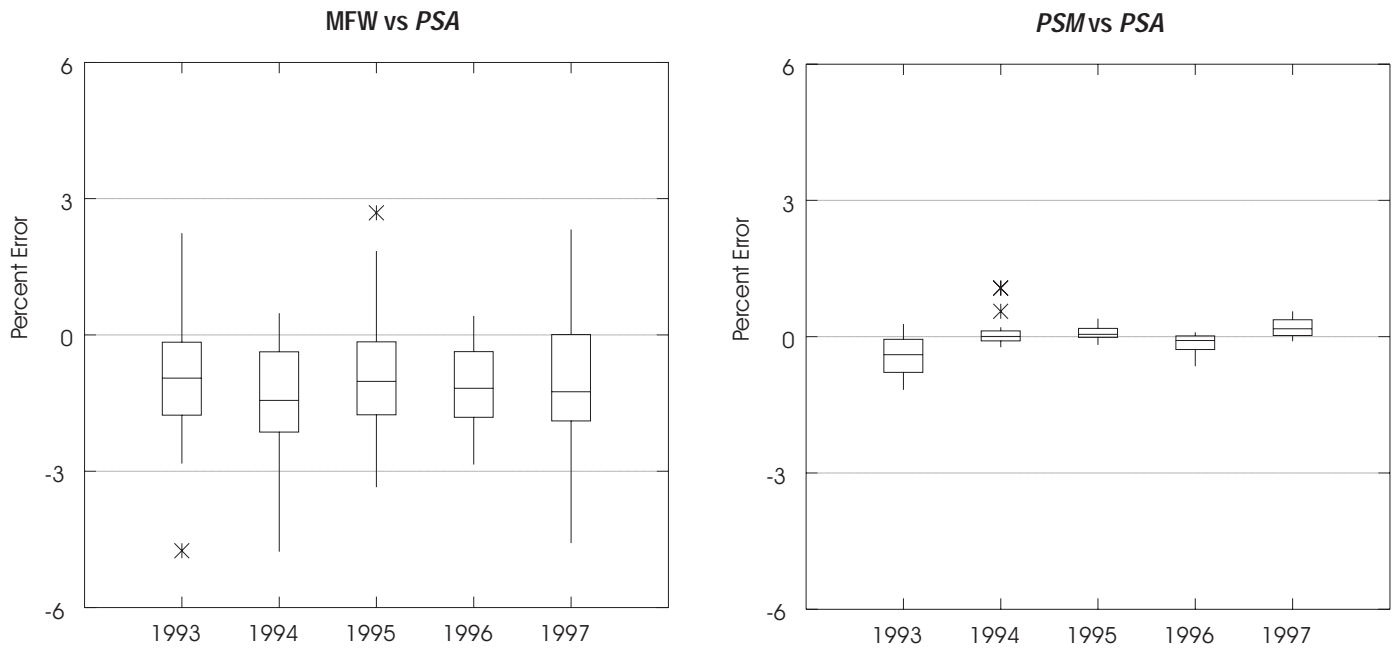
Motor Gasoline Stocks



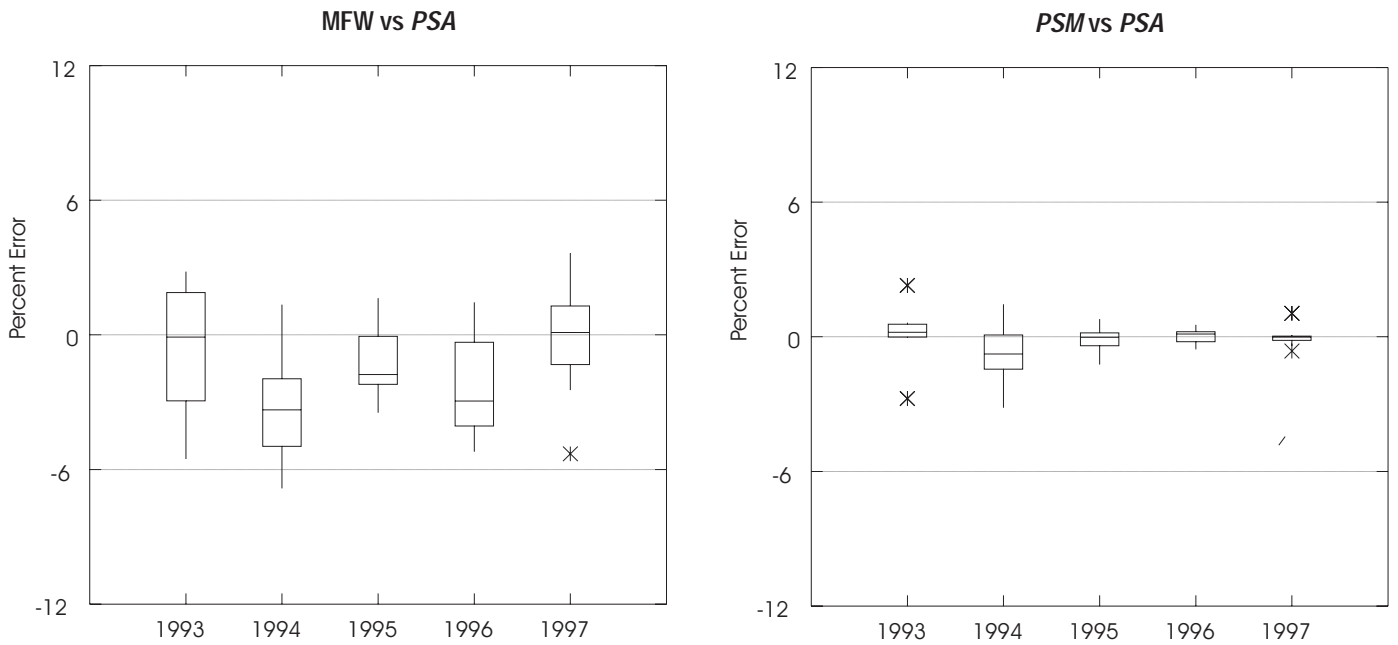
Source: Energy Information Administration, Petroleum Supply Reporting System.

Figure FE7. Range of Percent Errors for MFW and PSM Distillate Fuel Oil and Residual Fuel Oil Stocks Data, 1993 - 1997

Distillate Fuel Oil Stocks



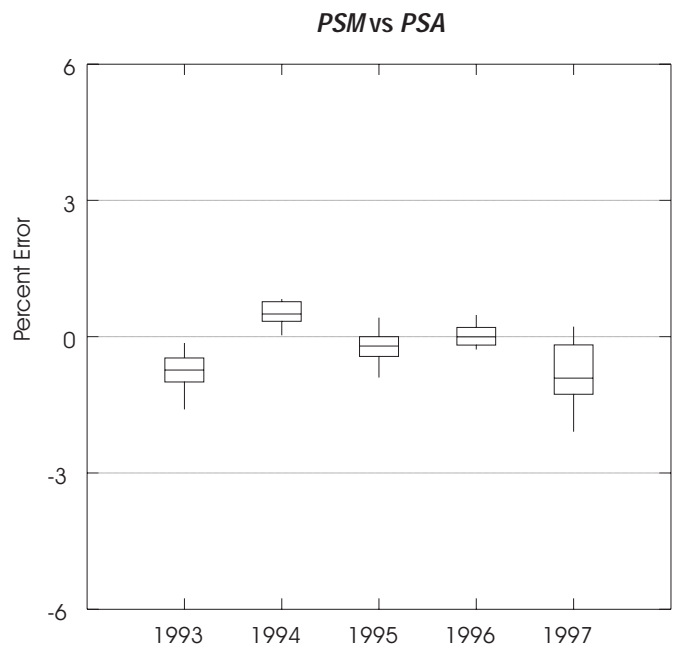
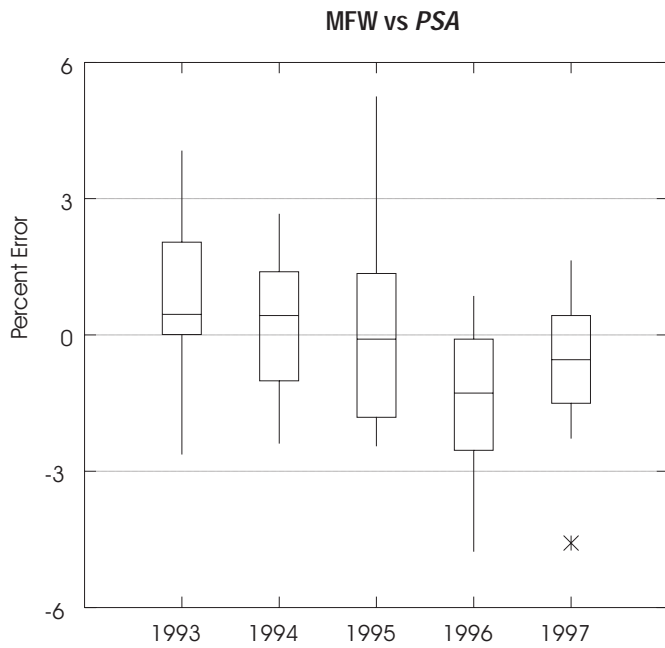
Residual Fuel Oil Stocks



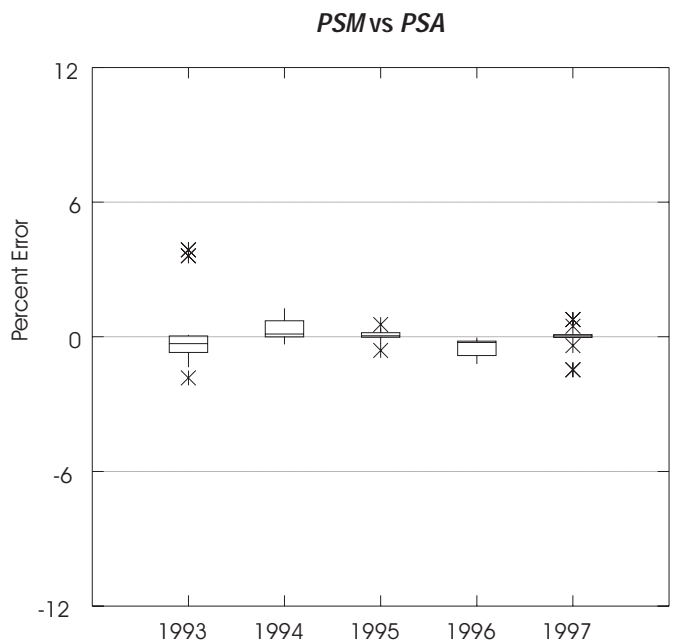
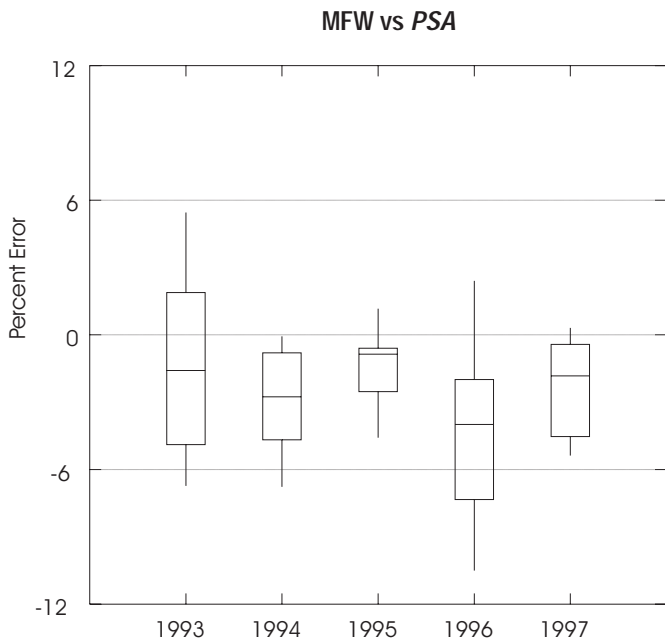
Source: Energy Information Administration, Petroleum Supply Reporting System.

Figure FE8. Range of Percent Errors for MFW and PSM Jet Fuel Stocks and Propane Stocks Data, 1993 - 1997

Jet Fuel Stocks

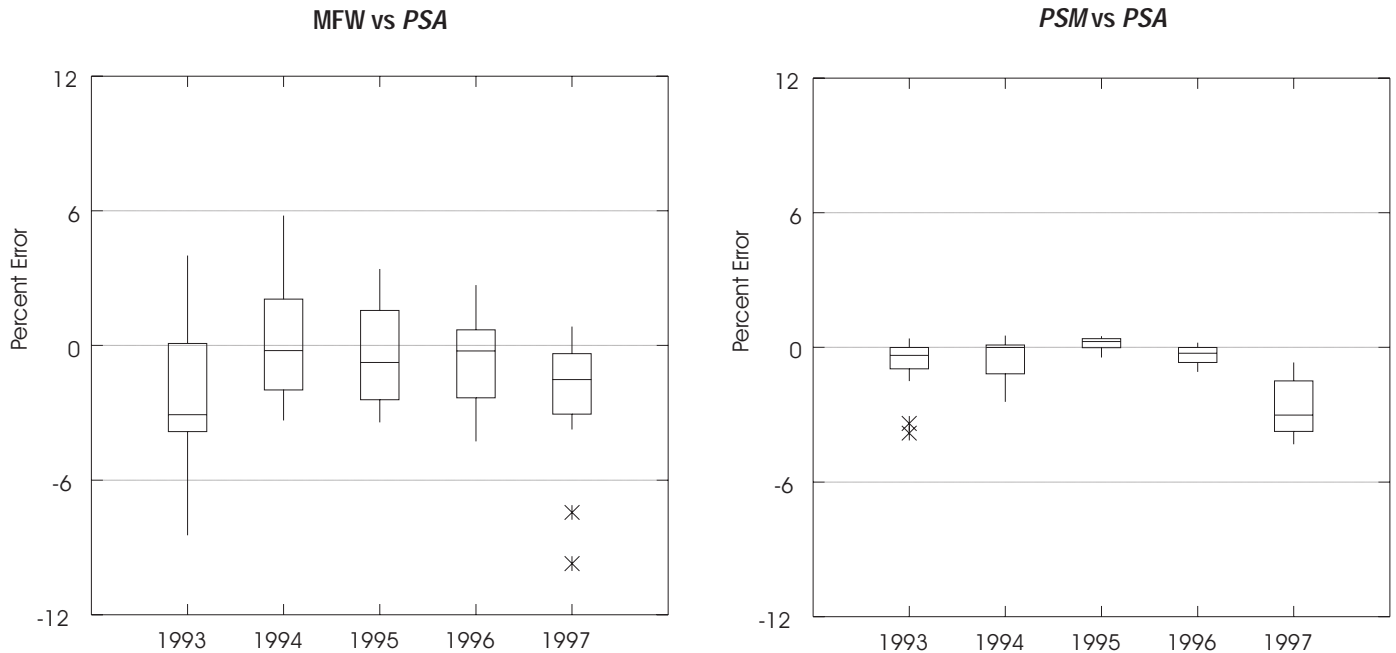


Propane Stocks



Source: Energy Information Administration, Petroleum Supply Reporting System.

Figure FE9. Range of Percent Errors for MFW and PSM Crude Oil Imports Excluding SPR Data, 1993 - 1997



Source: Energy Information Administration, Petroleum Supply Reporting System.

For 1997 MFW percent errors for jet fuel imports, it was the first year the box and whisker plot displayed a median greater than zero. This indicates that more MFW estimates were overestimated rather than underestimated. As in prior years, there were outliers in the 1997 PSM percent errors. The three resubmissions occurred in February, March, and October.

Conclusion

In summary, similar to previous years, the interim PSM data were closer in value to the final PSA volumes than the MFW estimates. This is largely a result of the longer time period provided to process the monthly data and monthly respondents' accounting systems.

In 1997, 45 of 66 PSM interim values were within 1 percent (mean absolute percent error) of the final values; 27 of 61 MFW estimates were within 2 percent (mean absolute percent error) of the final values; and 11 of those 27 were within 1 percent. As in previous years, the accuracy of 1997 preliminary and interim values varied by product and by petroleum supply type. As a group, stocks continued to have the most accurate MFW estimates and PSM interim values.

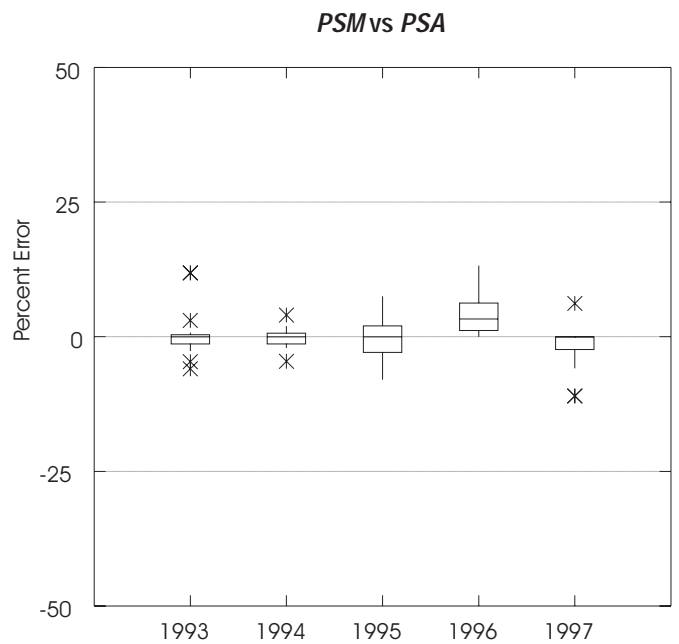
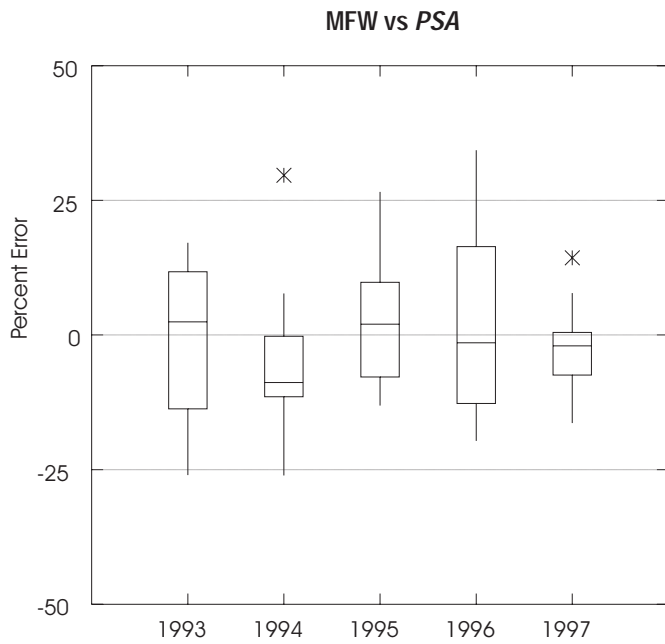
The good coverage for weekly surveys across petroleum supply type and product combinations has contributed to the accuracy of weekly estimates. In 1997, for 20 of the 21 categories, coverage was 90 percent or above. The decrease in response rates for the weekly and monthly surveys were the result of budget cuts at the respondent companies and EIA. However, this did not contribute to a decline in the accuracy of these data.

In December 1997, several key EIA personnel retired and other members of the Petroleum Division (PD) moved to other offices. This change combined with budget reductions produced increased workloads and decreased respondent and nonrespondent followup.

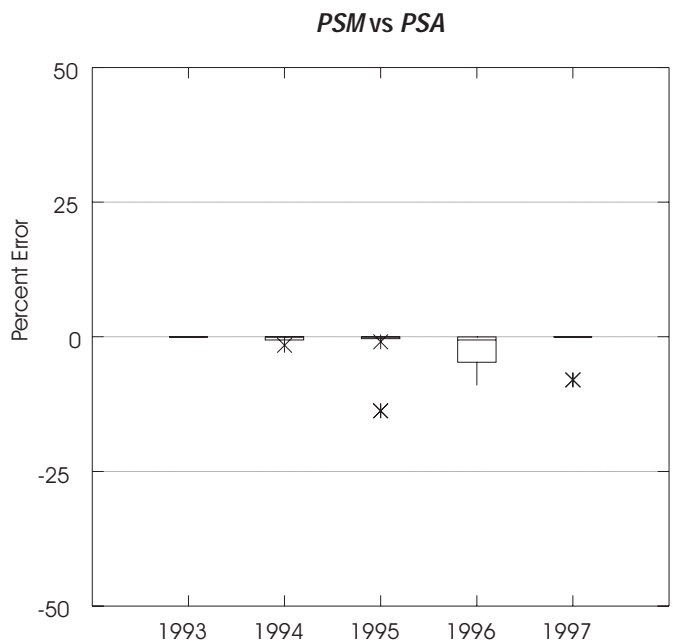
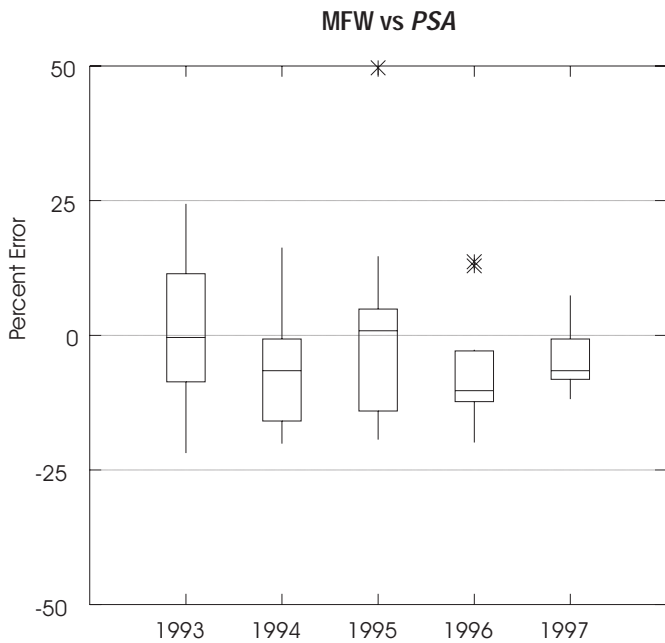
To successfully maintain and improve the accuracy of these data, the PD has made progress in its business re-engineering effort. The organization has been restructured to combine the Petroleum Supply Division and the Petroleum Marketing Division into the Petroleum Division to better serve customer needs, reduce expenditures, and improve efficiencies. In addition, a new group was created called the Collection and Dissemination Division (CDD). This reorganization facilitates major processes including "getting data in the door," survey management, editing, statistical methodology, analysis, publication, and customer outreach. A substantial effort has been made to develop and implement a Windows version of PEDRO, the electronic data collection method. This should contribute to the reduction of both respondent and EIA burden. Budget reductions will affect petroleum data dissemination. As a result of a customer survey, the EIA plans to eliminate EPUB in December 1998. Some other techniques being researched and developed are graphical data validation, optical scanning, and an improved automated data retrieval system, Survey Information System (SIS). Improvements are also being made in survey design, sampling, editing procedures, and edit parameters. The results of these efforts should enable the PD to continue to provide accurate weekly and monthly data estimates.

Figure FE10. Range of Percent Errors for MFW and PSM Motor Gasoline and Distillate Fuel Oil Imports Data, 1993 - 1997

Motor Gasoline Imports



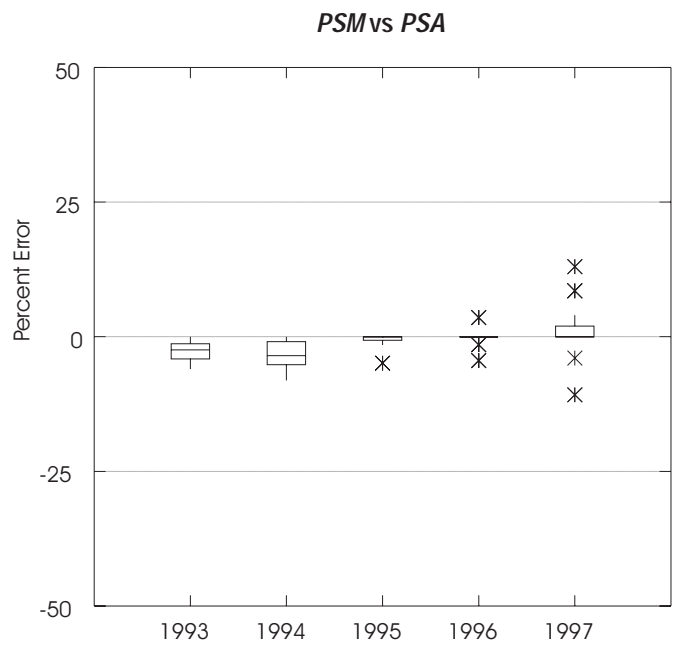
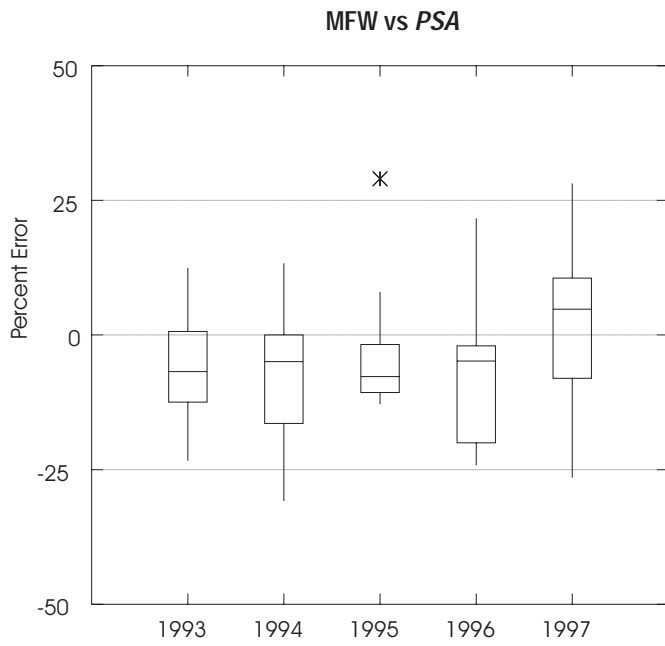
Distillate Fuel Oil Imports



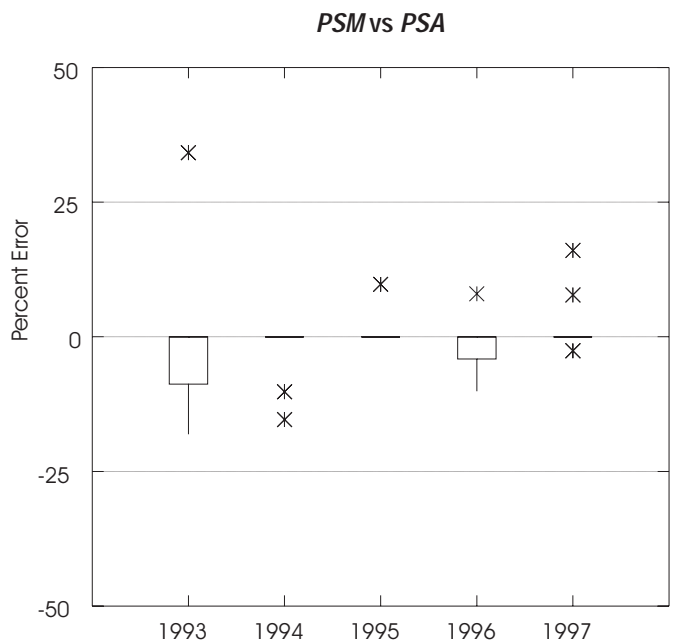
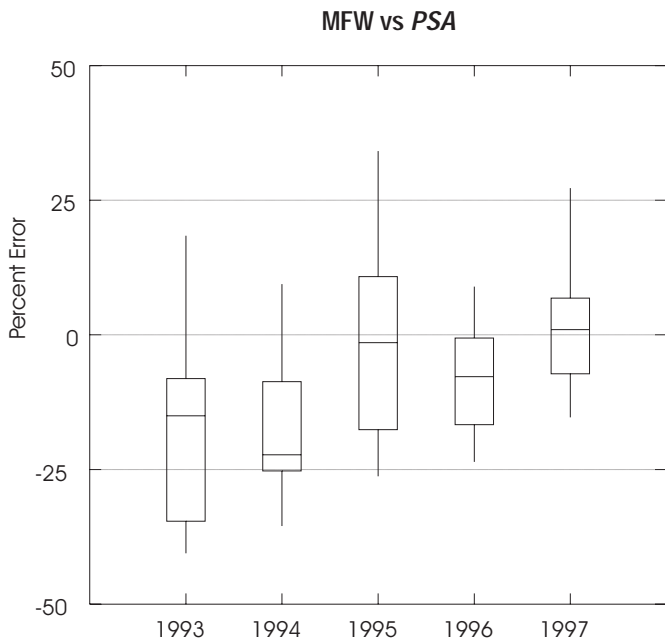
Source: Energy Information Administration, Petroleum Supply Reporting System.

Figure FE11. Range of Percent Errors for MFW and PSM Residual Fuel Oil and Jet Fuel Imports Data, 1993 - 1997

Residual Fuel Oil Imports



Jet Fuel Imports



Source: Energy Information Administration, Petroleum Supply Reporting System.