

## EXHIBITS

There were several exhibits on display at the conference, highlighting PWG project accomplishments, research and products:

---

### ADVOCATES FOR WOMEN IN SCIENCE, ENGINEERING AND MATHEMATICS (AWSEM)

Contact: Gail Whitney,  
gwhitney@admin.ogi.edu.

---

### THE ASSOCIATION FOR WOMEN IN SCIENCE (AWIS), AWIS MENTORING

Contact: Kate Durocher, 202-326-8940, awis@awis.org; www.awis.org.

---

### EDUCATIONAL EQUITY CONCEPTS INC.

Contact: edequity@admin.con2.com.

---

### GENDER-EQUITY IN SCIENCE, ENGINEERING AND MATHEMATICS EDUCATION: MAKING CONNECTIONS FOR 3RD TO 5TH GRADE GIRLS

Contact: Sara A. Cohen, 303-556-5315, SACohen111@aol.com.

---

### MATHEMATICAL EXPLORATIONS FOR GIRLS ACHIEVEMENT (MEGA) CAMP

Contacts: Julie Glass, JGLASS@gauss.sci.csu Hayward.edu; Kathy Hann at khann@mcs.csu Hayward.edu.

---

### PLUGGED IN!

Contact: Sue Metzler, 816-358-8750, smetzler@plugged-in.org; www.plugged-in.org.

---

### PORTFOLIOS TO INCREASE THE NUMBER OF WOMEN IN MATHEMATICS

Contact: Lawrence A. Sher, lawsher@yahoo.com.

---

### PROJECT EFFECT

Contact: Judy Meuth, 509-335-4382.

---

### TEACHING SMART

Contact: Pat Jonas, 800-529-1400, tsmart@rapidnet.com.

# EXHIBITS • EXHIBITS • EXHIBITS

---

### TRANSACTIONAL WRITING: EMPOWERING WOMEN AND GIRLS TO WIN AT MATHEMATICS

Contacts: Dr. Janet Rich, 305-237-7489; Dr. Suzanne S. Austin, saustin@kendall.mdcc.edu.

---

### WILDLIFE SCIENCE CAREERS PROGRAM

Contact: Annette Berkovits, 718-220-8144.

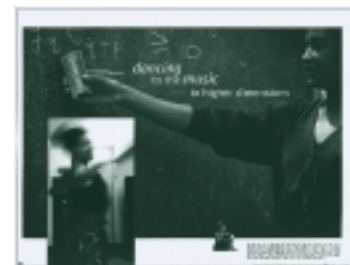
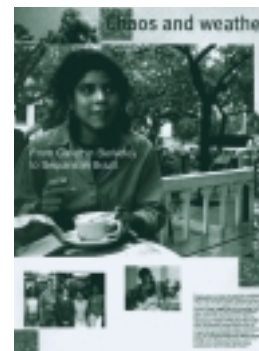
---

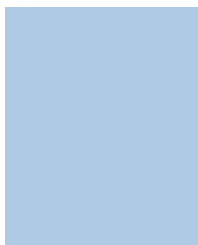
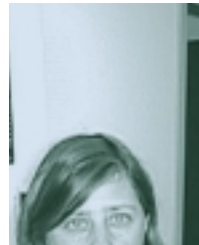
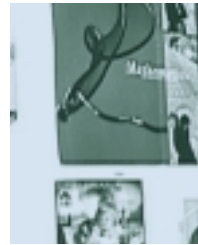
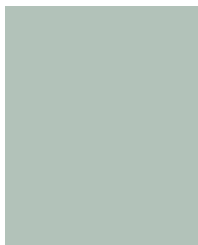
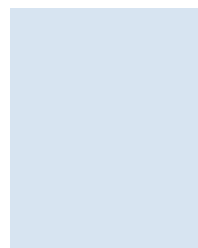
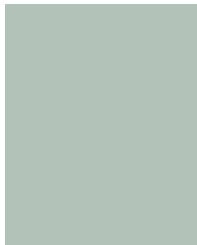
### WOMEN WHO WALK THROUGH TIME

Contact: Dr. Marjorie A. Chan, 801-581-6551, machan@mines.utah.edu; www.mines.utah.edu/geology/video.

### EXHIBIT HIGHLIGHT

Pam Davis' information dissemination project, *Visualizing Women in Mathematics, the Physical Sciences, and Technology: The Role of Personal Choice and Inspiration in a Scientist's Life*, targets young women, particularly at the high-school level. Davis' work on this project includes a series of gallery-quality posters of women in SEM, a study guide targeted at high-school girls with biographical information about those depicted, along with educational hands-on activities related to their respective fields of expertise, and other educational resources. Information in the study guide is to be made available on the World Wide Web. Short videotaped interviews with the women also are to be produced. The project seeks to humanize the image of science and the scientist to encourage young women students to see science and research as possible careers for them. The use of high-quality, attractive and accessible contemporary art and graphics, along with the use of other media, is expected to further the perception of science and technology as inviting, exciting, rewarding career choices for women.





## ABOUT THE DIRECTORATE FOR EDUCATION AND HUMAN RESOURCES

*The Directorate for Education and Human Resources (EHR) invests hundreds of millions of dollars annually in support of ambitious programs designed to improve science, mathematics, engineering, and technology education; to cultivate the science and technology work force; and to elevate the public's scientific literacy.*

EHR is unique among NSF's Directorates, each of which has a special purpose and is designed to meet a distinctive need. While all the discipline-specific Directorates support a variety of education projects that pertain to their respective fields, EHR is dedicated solely to furthering education and developing human resources in science and technology as a whole.

Working closely with the other NSF Directorates—as well as cooperating with federal, state, and local entities—EHR builds its education and human resources agenda according to three broad principles:

- 1 All children can and should learn challenging science, mathematics, and technology content.
- 2 No individual's talents, dreams, and hard work should be discounted. Our nation's most valuable resource is the diversity of its people.
- 3 Science, mathematics, engineering, and technology are relevant not only to those who practice research in these fields, but to all people. They contribute to our nation's future and enrich our personal lives.

Guiding EHR in its programmatic activities are five long-term strategic goals:

- 1 To help ensure, through a nationwide effort known as “systemwide reform,” that first-rate science, mathematics, and technology education is available to every elementary and secondary student in the United States, regardless of gender, race, ethnicity, disability status, or linguistic background.
- 2 To help ensure access to the best possible post-secondary education for those who elect to pursue careers in science, mathematics, engineering, and technology and to provide opportunities for nonspecialists to broaden their general scientific backgrounds.
- 3 To ensure that colleges and universities yield the well-qualified and versatile scientists, mathematicians, engineers, and technologists we need to meet the demands of the nation's workplaces.
- 4 To ensure the training of a highly qualified new generation of teachers of science, mathematics, engineering, and technology at all levels and to

support the continuing efforts of those already in the work force to broaden their knowledge base and to improve their teaching skills.

- 5 To further the scientific and technological knowledge of the U.S. public and to broaden public awareness that science, mathematics, engineering, and technology are no longer the exclusive province of professional practitioners in those fields, but are significant factors in all of our lives.

With these five goals as its foundation, EHR enables organizations and individuals to undertake innovative reforms aimed toward shaping a society in which all citizens are well prepared for the present and the future.

Visit the Directorate for Education and Human Resources' web site at [www.ehr.nsf.gov](http://www.ehr.nsf.gov).

## ABOUT THE NATIONAL SCIENCE FOUNDATION

*Created in 1950 as an independent federal agency, the National Science Foundation (NSF) promotes and advances progress in science and engineering in the United States by investing in research and education in all fields of science, mathematics, and engineering.*

NSF is committed to advancing exploration and inquiry in science and engineering research and education. Our focus is on the leading edges of all fields and disciplines of science and engineering and on the very promising areas between those fields and disciplines. NSF funds basic research and education seeking the following outcomes:

- 1 Discoveries at and across the frontier of science and engineering;
- 2 Connections between discoveries and their use in service to society;
- 3 A diverse, globally-oriented workforce of scientists and engineers;
- 4 Improved achievement in mathematics and science skills needed by all Americans; and

5 Relevant, timely information on the national and international science and engineering enterprise.

NSF is the only federal agency responsible for strengthening the overall health of U.S. science and engineering across all fields. Over the years, NSF has supported the work of leading educators and researchers; colleges, universities, and other institutions of higher learning; school systems; informal education centers and programs; and others involved in science and engineering in the United States. Such investments have resulted in historic contributions to U.S. national security and economic competitiveness, as well as in improvements in the lives of people everywhere.

NSF also is the primary federal agency dedicated to improving science and engineering education in the United States. To

meet the challenges of the future—to sustain the nation's economic strength and the well-being of its citizens into the 21st century—the United States requires a strong cadre of scientific leaders, a diverse work force that is mathematically and technologically literate, and a public that fully understands basic concepts of science and engineering. These are the priorities as NSF works to achieve excellence in U.S. science, mathematics, engineering, and technology education at all levels, from pre-kindergarten through graduate school. NSF has supported notable contributions in developing curriculum and instructional materials, in professional development of teachers, and in improving the participation of women, minorities, and individuals with disabilities in science and engineering.

## INQUIRIES FOR THE PROGRAM FOR WOMEN AND GIRLS/GENDER EQUITY

For web information about the PWG, go to [www.ehr.nsf.gov/EHR/HRD/ge/ge-index.htm](http://www.ehr.nsf.gov/EHR/HRD/ge/ge-index.htm). Select "Program for Gender Equity." Current information is provided as well as Frequently Asked Questions, and a few selected external links.

For information on prior grants in the PWG, go to [www.nsf.gov/verity/srchawd.htm](http://www.nsf.gov/verity/srchawd.htm). In the search dialog window, type 1544. You will see a list of projects funded by the PWG. Each project gives public information, including the Principal Investigator, amount granted, an abstract, contact information, and more.

E-mail inquiries should be addressed to [hrdwomen@nsf.gov](mailto:hrdwomen@nsf.gov), or you may telephone the PWG staff at 703-306-1637. The mailing address is:

Program for Women and Girls/Gender Equity  
Room 815  
Division of Human Resource Development  
Directorate for Education and Human Resources  
National Science Foundation  
4201 Wilson Boulevard  
Arlington, VA 22230

### How to Obtain NSF Publications

1. Visit [www.nsf.gov](http://www.nsf.gov) and select "Documents."
2. More directly, go to [www.nsf.gov/cgi.bin/pubsys/browser/odbrowse.pl](http://www.nsf.gov/cgi.bin/pubsys/browser/odbrowse.pl)
  - Select "Search by Document Referent Number"
  - Enter NSF 99-2 or another document number
  - Select whatever version in available: ASCII, HTML, or PDF
  - You may download and print
3. Send a Request for Publication "NSF 99-2" or such to [pubs@nsf.gov](mailto:pubs@nsf.gov), giving your name and mailing address.
4. Call 301-946-2722 and provide the publication number, and your name and address.

## THE PWG LISTSERV

Ruta Sevo	rsevo@nsf.gov	Michael Froning	ASFAMS@aol.com
NSF Women & Girls	hrdwomen@nsf.gov	Merle Froschl	75507.1306@compuserve.com
Krishna Athreya	ksathrey@iastate.edu	Larry Genalo	genalo@iastate.edu
Suzanne Austin	saustin@mdcc.edu	Yolanda George	ygeorge@aaas.org
Priscilla Auchincloss	psa@urhep.pas.rochester.edu	Jean Girves	j-girves@uiuc.edu
Carole Beal	cbeal@psych.umass.edu	Julie Glass	jglass@csuhayward.edu
Dorothy Bennett	dbennett@tristram.edc.org	Gail Gliner	glinerg@mscd.edu
Sarah Berenson	berenson@unity.ncsu.edu	Mary Gregory	gregory@hboi.edu
Annette Berkovits	aberkovits@wcs.org	Charlena Grimes	char2@wsu.edu
Fred Biasini	fbiasini@uab.edu	Susan K. Grubbs	sgrubbs@zanesville.k12.oh.us
Black Diamond Girl		Jong-on Hahm	jhahm@nas.edu
Scout Council	bdgsc@newwave.net	Penny Hammrich	phammric@thunder.ocis.temple.edu
Stephanie Blaisdell	blaisdell@asu.edu	Kathy Hann	khann@csuhayward.edu
Barbara Bogue	bbogue@enr.psu.edu	Sally Hare	sally@coastal.edu
Melissa Borquist	melissaborquist_at_cec002-1@cc.cranbrook.edu	Etta Heber	eheber@cosc.org
Suzanne Brainard	brainard@u.washington.edu	Shelly (Rachelle) Heller	sheller@seas.gwu.edu
Judy Brown	jbrown@miamisci.org	Maria Hesse	hesse@cg.c.maricopa.edu
Susan Buckley-Holland	sbuckley@mdcc.edu	D. Humphreys	dh@aacu.nw.dc.us
Carol Burger	cjburger@vt.edu	Naomi Hupert	nhupert@tristram.edc.org
Pat Campbell	campbell@campbell-kibler.com	Michelle Huston	mhuston@u.washington.edu
Carolyn Carter	carterc@ael.org	Jacqueline Hundt	jmhundt@wfu.edu
Susan Cavin	susan.cavin@nyu.edu	Institute for Women in	
Marjorie A. Chan	machan@mines.utah.edu	Trades, Tech, & Science	iwitts@aol.com
Meera Chandrasekhar	physmc@showme.missouri.edu	Carolyn Jarvis	jarvis@is.nyu.edu
Arlene Chasek	chasek@rci.rutgers.edu	Martha James	mjames@nsf.gov
Liesl Chatman	liesl@itsa.ucsf.edu	Janice Johnson	jjohnso@washeld.k12.az.us
Pamela Clute	clute@citrus.ucr.edu	Pat Jonas	tsmart@rapidnet.com
Sara Cohen	SACohen111@aol.com	Wendy Katkin	wkatkin@notes.cc.sunysb.edu
Maureen Coelho	coelhom@cpep.org	Linda Kekelis	lskekelis@aol.com
Sue Cook	scook@hboi.edu	Barbara Kerr	bkerr@asu.edu
Sandy Cooper	scooper@math.wsu.edu	Nanda Kirkpatrick	kpat@rice.edu
Mary Crowe	crowe@coastal.edu	Sue Klein	sue_klein@ed.gov
Pamela Davis	pdavis@physics.ucla.edu	Laura Koch	kochx001@tc.umn.edu
Sarah Delia	sadelia@juno.com	Sharon Kurpius	sharon.kurpius@asu.edu
Chrys Demetry	cdemetry@wpi.edu	Pat Kusimo	kusimop@ael.org
Cathrine Didon	didion@awis.org	Pamela Lawhead	lawhead@cs.olemiss.edu
Idella Edward	idella_e@bridginggap.org	Maria Laxo	mlaxo@cosc.org
Allan Fisher	alf@cs.cmu.edu	Becky Litherland	blitherl@mail.columbia.k12.mo.us
Pam Fisher	Pam_Fisher@together.cudenver.edu	Marsha LoFaro	teggatz@theta.math.wsu.edu
Melanie Flatt	melanief@rapidnet.com, tsmart@rapidnet.com	Laurie Luckenbill	lauriel@asu.edu
		Hollis MacLean	Hollis@awsesm.com
		Sandra Madison	smadison@uwsp.edu
		John R. Marks	jmarks@matc.tec.oh.us

## THE PWG LISTSERV

Catherine Mavriplis	mavripli@seas.gwu.edu
Maralee Mayberry	Mayberry@nevada.edu
James McLean	majmclean@alpha.ecsu.edu
Sue Metzler	smetzler@plugged-in.org
Judy Meuth	meuth@+wsu.edu
Sarah Meyland	smeyland@aol.com
Ioannis Miaoulis	imiaouli@tufts.edu
Janice Mokros	jan_mokros@terc.edu
Stacey Motland	smotland@wcs.org
Eileen Muirragui	emuirragui@air-dc.org
Caryn M. Musil	musil@aacu.nw.dc.us
Mary Ochoa	mso@rice.edu
Lise Orville	lorville@aol.com
Tony Phillips	tony@math.sunysb.edu
Dawn Pickard	pickard@oakland.edu
Pat Pitkin	papwml@rit.edu
Adele Pittendrigh	adlap@newton.math.montana.edu
Carmen Plank	ccplank@aol.com
Janet Raban	raban@mscd.edu
B Ramakrishna	bramakrishna@asu.edu
Pushda Ramakrishna	Ramakrishna@cgc.maricopa.edu
Brinton Ramsey	ramsey@aacu.nw.dc.us
Margaret Rees	rees@nevada.edu
Greer M. Richardson	educate@vm.temple.edu
Edward Rickert	erickert@uab.edu
Frank Romero	fromero@citrus.ucr.edu
Nancy Ross	nross@pogo.edc.org
Sue Rosser	srosser@wst.ufl.edu
Mary Anderson-Rowland	mary.anderson@asu.edu
Fred Rudolph	fbr@rice.edu
Jo Sanders	jsanders@wri-edu.org
Mary Sandy	mls@penngard.pgtd.odu.edu
Rozanne Severance	sever029@gold.tc.umn.edu
Laura Severin	lrs@unity.ncsu.edu
Ann-Marie Schmoltnner	aschmolt@cais.com
Pat Schulte	yfsgrant@rapidnet.com
Charol Shakeshaft	CharolSS@aol.com
Larry Sher	lawsher@yahoo.com
Susan Shugerman	shuger@admin.ogi.edu
Ann Sigford	asigford@css.edu
Marilynn Sikes	marilynns@discoveryplace.org
Gayle Slaughter	gayles@bcm.tmc.edu
H. David Snyder	hdsnyder@gallux.gallaudet.edu

Mark Sonntag	sonntamr@wfu.edu
Charlene Sorensen	Charlene.Sorensen@gallaudet.edu
Richard Steere	tsmart@rapidnet.com
Nancy Stubbs	nstubbs@suhds.k12.ca.us
Shelley Stults	sstults@optonline.net
Barbara Sprung	75507.1306@compuserve.com
Lindsay Tartre	ltartre@ui.urban.org
Karen Thomson	kthomson@wcs.org
Carolyn Thorsen	carolyn.thorsen@ceismc.gatech.edu
Richard Tobin	rtobin@air-dc.org
Dyanne Tracy	dtracy@oakland.edu
L. Tubbs	letsch@rit.edu
Dianne Tucker	dtucker@uab.edu
Marion Usselman	marion.usselman@ceismc.gatech.edu
Sara Wadia-Fascetti	swf@neu.edu
Ellen Wahl	Ewahl@edc.org
Mary White	scholars@www.eas.asu.edu
Gail Whitney	gwhitney@admin.ogi.edu
Kim Wilcox	wilco001@maroon.tc.umn.edu
Dawn Wilkins	dwilkins@cs.olemiss.edu
Patricia Wilkinson	pbwilk@aol.com
Pat Wilson	Pwilson@asu.edu
Paula N. Wilson	pnwilson@mines.utah.edu
Peter Wong	pwong@tufts.edu
Mary Wyer	mbwyer@unity.ncsu.edu
Karen Wynn	kxw8@psu.edu
Sara Young	SLYoung@montana.edu
Andrea Zardetto-Smith	amzarsmi@creighton.edu

### Lists:

**tsmart@rapidnet.com**  
**(Melanie Flatt, Director;**  
**Richard Steere; Pat Jonas;**  
**Dixie Shreves)**

**wise@psu.edu**  
**nwcrow@u.washington.edu**  
**(Angela Ginorio; Michelle**  
**Huston)**

## FEATURED RESOURCES: WOMEN AND MINORITIES IN SCIENCE AND ENGINEERING

PREPARED BY STEPHANIE BIANCHI, NSF LIBRARIAN

Society for Advancement of Chicanos and Native

<a href="http://www.sacnas.org/">Americans in Science</a>	<a href="http://www.sacnas.org/">www.sacnas.org/</a>
<a href="http://bioc02.uthscsa.edu/aisesnet.html">American Indian Science and Engineering Society</a>	<a href="http://bioc02.uthscsa.edu/aisesnet.html">bioc02.uthscsa.edu/aisesnet.html</a>
<a href="http://www.awsem.com/">Advocates for Women in Science, Engineering, and Mathematics</a>	<a href="http://www.awsem.com/">www.awsem.com/</a>
<a href="http://www.ifias.ca/gsd/gsdinfo.html">Gender, Science and Technology: International Policy Issues</a>	<a href="http://www.ifias.ca/gsd/gsdinfo.html">www.ifias.ca/gsd/gsdinfo.html</a>
<a href="http://www.cco.caltech.edu:80/~wcenter/groups.html">Caltech Links Page to Women in Science</a>	<a href="http://www.cco.caltech.edu:80/~wcenter/groups.html">www.cco.caltech.edu:80/~wcenter/groups.html</a>
<a href="http://www.netsrq.com/~dbois/">Distinguished Women of Past and Present</a>	<a href="http://www.netsrq.com/~dbois/">www.netsrq.com/~dbois/</a>
<a href="http://www.scicentral.com/W-02womi.html">Women &amp; Minorities in Science &amp; Engineering from SciCentral</a>	<a href="http://www.scicentral.com/W-02womi.html">www.scicentral.com/W-02womi.html</a>
<a href="http://sci.aaas.org/nextwave/print/minorities/">Maintaining Diversity in Science (a Science/AAAS feature)</a>	<a href="http://sci.aaas.org/nextwave/print/minorities/">sci.aaas.org/nextwave/print/minorities/</a>
International Gender, Science and Technology Information	
<a href="http://www.Wigsat.org/GSTPMap.html">Map (GST Map)</a>	<a href="http://www.Wigsat.org/GSTPMap.html">www.Wigsat.org/GSTPMap.html</a>
CRA Committee on the Status of Women in Computer Science and Engineering	
<a href="http://cra.org/Activities/craw/">and Engineering</a>	<a href="http://cra.org/Activities/craw/">cra.org/Activities/craw/</a>
Encouraging Women in Science and Engineering (National Research Council Directory)	
<a href="http://www2.nas.edu/cwse/Organizations">and Engineering</a>	<a href="http://www2.nas.edu/cwse/Organizations">www2.nas.edu/cwse/Organizations</a>
<a href="http://www.ai.mit.edu/people/ellens/Gender/wom_and_min.html">Women and Minorities in Science and Engineering (MIT)</a>	<a href="http://www.ai.mit.edu/people/ellens/Gender/wom_and_min.html">www.ai.mit.edu/people/ellens/Gender/wom_and_min.html</a>
<a href="http://www.phds.org/index.cfm?theTopicID=63">Women in Science, Math, and Engineering PhDs.org Links Page</a>	<a href="http://www.phds.org/index.cfm?theTopicID=63">www.phds.org/index.cfm?theTopicID=63</a>
<a href="http://crux.astr.ua.edu/4000WS/4000WS.html">4000 Years of Women in Science</a>	<a href="http://crux.astr.ua.edu/4000WS/4000WS.html">crux.astr.ua.edu/4000WS/4000WS.html</a>
<a href="http://www.sdsc.edu/Publications/ScienceWomen">Women in Science, selected biographies from UCSD</a>	<a href="http://www.sdsc.edu/Publications/ScienceWomen">www.sdsc.edu/Publications/ScienceWomen</a>
<a href="http://library.advanced.org/20117">Women in Science</a>	<a href="http://library.advanced.org/20117">library.advanced.org/20117</a>
<a href="http://encarta.msn.com/schoolhouse/womensci/womensci.asp">Women in Science from Encarta</a>	<a href="http://encarta.msn.com/schoolhouse/womensci/womensci.asp">encarta.msn.com/schoolhouse/womensci/womensci.asp</a>
<a href="http://www.lib.iastate.edu/spcl/wise/wise.html">Archives of Women in Science and Engineering</a>	<a href="http://www.lib.iastate.edu/spcl/wise/wise.html">www.lib.iastate.edu/spcl/wise/wise.html</a>
Climbing the Ladder: An Update on the Status of	
<a href="http://www.nap.edu/readingroom/records/0309033411.html">Doctoral Women Scientists and Engineers. (NAS Report)</a>	<a href="http://www.nap.edu/readingroom/records/0309033411.html">www.nap.edu/readingroom/records/0309033411.html</a>
Women Scientists and Engineers Employed in Industry:	
<a href="http://www.nap.edu/readingroom/records/0309049944.html">Why So Few? (NAS Report)</a>	<a href="http://www.nap.edu/readingroom/records/0309049944.html">www.nap.edu/readingroom/records/0309049944.html</a>
<a href="http://web.fie.com/web/mol/text/minlist.htm">Minority Colleges and Universities</a>	<a href="http://web.fie.com/web/mol/text/minlist.htm">web.fie.com/web/mol/text/minlist.htm</a>
<a href="http://www.advancingwomen.com/grrls2.phtml">A Woman's Career in Science</a>	<a href="http://www.advancingwomen.com/grrls2.phtml">www.advancingwomen.com/grrls2.phtml</a>
<a href="http://www.awis.org/">AWIS: Association for Women in Science</a>	<a href="http://www.awis.org/">www.awis.org/</a>
<a href="http://www.awsem.com/">Advocates for Women in Science, Engineering, and Mathematics</a>	<a href="http://www.awsem.com/">www.awsem.com/</a>
<a href="http://www.psc.lsa.umich.edu/~yuxie/soc310/slide21.htm">Sex Differences in Research Productivity Revisited</a>	<a href="http://www.psc.lsa.umich.edu/~yuxie/soc310/slide21.htm">www.psc.lsa.umich.edu/~yuxie/soc310/slide21.htm</a>



## FEATURED RESOURCES: WOMEN AND MINORITIES IN SCIENCE AND ENGINEERING

---

### Specific Disciplines

#### ASTRONOMY

[Women in Astronomy](http://www.stsci.edu/stsci/service/cswa/women/) [www.stsci.edu/stsci/service/cswa/women/](http://www.stsci.edu/stsci/service/cswa/women/)

#### ARTIFICIAL INTELLIGENCE

[Women in Artificial Intelligence](http://www.ai.mit.edu/people/ellens/Gender/ieee/ieee.htm) [www.ai.mit.edu/people/ellens/Gender/ieee/ieee.htm](http://www.ai.mit.edu/people/ellens/Gender/ieee/ieee.htm)

#### COMPUTER SCIENCES

[Women in Computer Science](http://www.ai.mit.edu/people/ellens/gender.html) [www.ai.mit.edu/people/ellens/gender.html](http://www.ai.mit.edu/people/ellens/gender.html)

[The Ada Project: Internet resources for women in computer science](http://www.cs.yale.edu/HTML/YALE/CS/HyPlans/tap/tap.html) [www.cs.yale.edu/HTML/YALE/CS/HyPlans/tap/tap.html](http://www.cs.yale.edu/HTML/YALE/CS/HyPlans/tap/tap.html)

#### ENGINEERING

[Society of Hispanic Professional Engineers](http://www.shpe.org/) [www.shpe.org/](http://www.shpe.org/)

[IEEE Women-In-Engineering Home Page](http://www.ieee.org/ieee_women_in_eng/women.html) [www.ieee.org/ieee\\_women\\_in\\_eng/women.html](http://www.ieee.org/ieee_women_in_eng/women.html)

[The Society of Women Engineers](http://www.swe.org/) [www.swe.org/](http://www.swe.org/)

[Women in the Engineering Industry](http://www.webfoot.com/advice/women.in.eng.html) [www.webfoot.com/advice/women.in.eng.html](http://www.webfoot.com/advice/women.in.eng.html)

#### MATHEMATICS

[Women Mathematicians](http://www.scottlan.edu/lriddle/women/women.htm) [www.scottlan.edu/lriddle/women/women.htm](http://www.scottlan.edu/lriddle/women/women.htm)

[Women in Mathematics](http://www.teleplex.bsu.edu/home/nshadle/web/wmmain.htm) [www.teleplex.bsu.edu/home/nshadle/web/wmmain.htm](http://www.teleplex.bsu.edu/home/nshadle/web/wmmain.htm)

[Women in Math Project](http://darkwing.uoregon.edu/~wmmmath/) [darkwing.uoregon.edu/~wmmmath/](http://darkwing.uoregon.edu/~wmmmath/)

#### PHYSICS

[Women in Physics](http://www.physics.ucla.edu/~cwp/) [www.physics.ucla.edu/~cwp/](http://www.physics.ucla.edu/~cwp/)

[Contributions of 20th Century Women to Physics](http://www.physics.ucla.edu3/~cwp/) [www.physics.ucla.edu3/~cwp/](http://www.physics.ucla.edu3/~cwp/)

## FEATURED RESOURCES: WEB DIRECTORIES AND SITES FOR SCIENCE AND SCIENCE EDUCATION

PREPARED BY **STEPHANIE BIANCHI, NSF LIBRARIAN**

### WEB DIRECTORIES FOR SCIENCE RESOURCE STUDIES

[www.tc.cornell.edu/Edu/MathSciGateway/](http://www.tc.cornell.edu/Edu/MathSciGateway/)

Cornell Math and Science Gateway for Grades 9-12  
150.216.8.1/roadmap/scimath.htm

K-12 Educator's Roadmap to the Internet  
[medinfo.wustl.edu/~ysp/](http://medinfo.wustl.edu/~ysp/)

Young Scientists Program (Washington Univ. School of Medicine)

[home.unicom.net/~warnerr/](http://home.unicom.net/~warnerr/)

Mr. Warner's Cool Science  
[www.hudmark.com/schoolnet/science.html](http://www.hudmark.com/schoolnet/science.html)

SchoolNet Science Links  
[www.li.net/~ndonohue/sci.html](http://www.li.net/~ndonohue/sci.html)  
Science Internet Resources

[www-sci.lib.uci.edu/SEP/SEP.html](http://www-sci.lib.uci.edu/SEP/SEP.html)  
Frank Potter's Science Gems

[www-hpcc.astro.washington.edu/scied/science.html](http://www-hpcc.astro.washington.edu/scied/science.html)  
SciEd: Science and Mathematics Education Resources

### WEB DIRECTORIES WITH SCIENCE CATEGORIES

[www.mcli.dist.maricopa.edu/tl/](http://www.mcli.dist.maricopa.edu/tl/)  
Teaching and Learning on the World Wide Web—  
Also contains a teaching resource web search engine.  
[www.kn.pacbell.com/wired/bluwebn/categories.html](http://www.kn.pacbell.com/wired/bluwebn/categories.html)  
Blue Web'N

### SITES FOR COOL SCIENCE LINKS

[sln.fi.edu/tfi/jump.html](http://sln.fi.edu/tfi/jump.html)

Online Exhibits Hotlist  
[csa.clpgh.org/Links/index.html](http://csa.clpgh.org/Links/index.html)

Carnegie Science Academies Cool Links  
[www.keysites.com/](http://www.keysites.com/)

New Scientist Planet Science: Key sites—Hot Internet Issues and Cool Sites

### SCIENCE FOR GIRLS

[www.beloit.edu/~gwsoci/gws.html](http://www.beloit.edu/~gwsoci/gws.html)

The Girls and Women in Science Project  
[library.advanced.org/20117/](http://library.advanced.org/20117/)

Women in Science—Directory, mentoring, links, interviews, and more.

[www.hopper.com/hopper/scigirl.html](http://www.hopper.com/hopper/scigirl.html)  
Science is for Girls Internet Scavenger Hunt

[www.backyard.org/](http://www.backyard.org/)  
The Backyard Project for High School Girls  
Exploring a Career in Computer Science

[weber.u.washington.edu/~rural/](http://weber.u.washington.edu/~rural/)  
Rural Girls in Science

[www.sig.net/~scicomp/twist/kidFun.html](http://www.sig.net/~scicomp/twist/kidFun.html)  
Fun Educational Stuff for Girls

[www.bess.net/science\\_and\\_nature/](http://www.bess.net/science_and_nature/)  
Bess' Science & Nature

[www.academic.org/](http://www.academic.org/)  
Expect the Best from a Girl

[www.girltech.com/](http://www.girltech.com/)  
GirlTech

[genderequity.vsgc.odu.edu/](http://genderequity.vsgc.odu.edu/)  
Virginia Space Grant Consortium Gender Equity Web page

## FEATURED RESOURCES: WEB DIRECTORIES AND SITES FOR SCIENCE AND SCIENCE EDUCATION

---

### TEACHING RESOURCES: BIOLOGY

[lenti.med.umn.edu/~mwd/courses.html](http://lenti.med.umn.edu/~mwd/courses.html)

Virtual Courses in Biology

[www-hpcc.astro.washington.edu/scied/biology.html](http://www-hpcc.astro.washington.edu/scied/biology.html)

Biology Education Resources

[esg-www.mit.edu:8001/esgbio/](http://esg-www.mit.edu:8001/esgbio/)

The MIT Biology Hypertextbook—introductory resource including information on chemistry, biochemistry, genetics, cell and molecular biology, and immunology.

[www.biology.arizona.edu/](http://www.biology.arizona.edu/)

The Biology Project—University of Arizona online interactive resource for learning biology.

[arnica.csustan.edu/](http://arnica.csustan.edu/)

CSUBIOWEB—consolidates existing WWW biological science teaching and research resources and creates and distributes original multimedia resources for the teaching of biology.

[www-sci.lib.uci.edu/SEP/life.html](http://www-sci.lib.uci.edu/SEP/life.html) Frank Potter's Science Gems-Life Science, K-12

[www.tc.cornell.edu/Edu/MathSciGateway/biology.html](http://www.tc.cornell.edu/Edu/MathSciGateway/biology.html)

Cornell Theory Center Math and Science GatewayBiology, Grades 9-12

[www.bio.brandeis.edu/biomath/top.html](http://www.bio.brandeis.edu/biomath/top.html)

Mathematics and Biology—The purpose of these pages is to press our noses against some of the windows that look upon biological systems, and to do it in as interactive and stimulating a way as possible.

[biodidac.bio.uottawa.ca/](http://biodidac.bio.uottawa.ca/)

Biological Images for Educational Use

[www.floridaplants.com/Scott/](http://www.floridaplants.com/Scott/)

Scott's Botanical Link of the Day—This service is organized by Dr. Scott Russell through the Department of Botany and Microbiology of the University of Oklahoma, US. The purpose is to compile useful botany education resources for the advanced high school (AP-biology) and college level.

[nlu.nl.edu/bthu/nlu/eight/es/Homepage.html](http://nlu.nl.edu/bthu/nlu/eight/es/Homepage.html)

Earth Sciences Emporium—A variety of interesting sites for the earth science educator and enthusiast.

[www.tc.cornell.edu/Edu/MathSciGateway/environment.html](http://www.tc.cornell.edu/Edu/MathSciGateway/environment.html)

Cornell Theory Center Math and Science Gateway Grades 9-12: Earth and Environmental Science

[www-sci.lib.uci.edu/SEP/earth.html](http://www-sci.lib.uci.edu/SEP/earth.html)

Frank Potter's Science Gems-Earth Sciences

[www.tc.cornell.edu/Edu/MathSciGateway/meteorology.html](http://www.tc.cornell.edu/Edu/MathSciGateway/meteorology.html)

Meteorology

[www.hic.net/hicpersonal/j/jbutler/update/cit.htm](http://www.hic.net/hicpersonal/j/jbutler/update/cit.htm)

Geology and the Environment—An Internet-Based Resource Guide. This Internet-based resource guide contains all the links cited in the print version of the same name by Pipkin and Trent. Contains text, graphics, and in some cases, slide shows for over 100 resources in twenty-four categories, including environmental geology, water, and remote sensing.

## FEATURED RESOURCES: WEB DIRECTORIES AND SITES FOR SCIENCE AND SCIENCE EDUCATION

PREPARED BY STEPHANIE BIANCHI, NSF LIBRARIAN

[www.mtnswest.com/ores/geo-ed/index.htm](http://www.mtnswest.com/ores/geo-ed/index.htm)

ORES Earth Science Education Links

[www.mtnswest.com/ores/geo-ed/sites.htm](http://www.mtnswest.com/ores/geo-ed/sites.htm)

Links to Earth Science Education Directories

[www.uh.edu/~jbutler/anon/anonfield.html](http://www.uh.edu/~jbutler/anon/anonfield.html)

The Virtual Geosciences Professor

[www.kn.pacbell.com/cgi-](http://www.kn.pacbell.com/cgi-bin/listApps.pl?Earth&Science)

[bin/listApps.pl?Earth&Science](http://www.kn.pacbell.com/cgi-bin/listApps.pl?Earth&Science)

Blue WebN Earth Sciences Sites. Rated hot sites.

### TEACHING RESOURCES: SOCIAL, BEHAVIORAL SCIENCES AND ECONOMICS

[www.math.uah.edu/~stat/](http://www.math.uah.edu/~stat/)

Virtual Laboratories in Probability and Statistics Interactive, web-based modules for students and teachers of probability and statistics. Most pages have one or more Java applets designed so that the student can run random experiments or generate data quickly and easily. The text component of a page is a discussion of the underlying mathematical theory, together with an set of exercises that are faithful to the rules of three. Indeed, most of the text consists of (hopefully bite-sized) exercises that guide the student through the development of the mathematical theory and the development of probabilistic intuition.

[psych.hanover.edu/APS/](http://psych.hanover.edu/APS/)

Teaching Resources Links from the APA in the following categories: General Material; Behavioral Biological; Psychology; Clinical Psychology; Cognitive Psychology; Developmental Psychology; Educational Psychology; Evolutionary Psychology; Forensic Psychology; Health Psychology; History and Systems; Research Methods; Sensation and Perception; Social Psychology; Statistics;

### WORLD LECTURE HALL SERIES, BY DISCIPLINE:

The World Lecture Hall (WLH) contains links to pages created by faculty worldwide who are using the web to deliver class materials. For example, you will find course syllabi, assignments, lecture notes, exams, class calendars, multimedia textbooks, etc.

[www.utexas.edu/world/lecture/](http://www.utexas.edu/world/lecture/)

World Lecture Hall

[www.utexas.edu/world/lecture/agriculture/](http://www.utexas.edu/world/lecture/agriculture/)

Agriculture

[www.utexas.edu/world/lecture/ant/](http://www.utexas.edu/world/lecture/ant/)

Anthropology and Archaeology

[www.utexas.edu/world/lecture/bch/](http://www.utexas.edu/world/lecture/bch/)

Biochemistry

[www.utexas.edu/world/lecture/bio/](http://www.utexas.edu/world/lecture/bio/)

Biology and Botany

[www.utexas.edu/world/lecture/biotech/](http://www.utexas.edu/world/lecture/biotech/)

Biotechnology

[www.utexas.edu/world/lecture/earthsci/](http://www.utexas.edu/world/lecture/earthsci/)

Earth Science

## FEATURED RESOURCES: WEB DIRECTORIES AND SITES FOR SCIENCE AND SCIENCE EDUCATION

---

[www.utexas.edu/world/lecture/eco/](http://www.utexas.edu/world/lecture/eco/)  
Economics

[www.utexas.edu/world/lecture/envsci/](http://www.utexas.edu/world/lecture/envsci/)  
Environmental Science

[www.utexas.edu/world/lecture/linguistics/](http://www.utexas.edu/world/lecture/linguistics/)  
Linguistics

[www.utexas.edu/world/lecture/mic/](http://www.utexas.edu/world/lecture/mic/)  
Microbiology

[www.utexas.edu/world/lecture/psy/](http://www.utexas.edu/world/lecture/psy/)  
Psychology

[www.utexas.edu/world/lecture/soc/](http://www.utexas.edu/world/lecture/soc/)  
Sociology

[www.utexas.edu/world/lecture/statistics/](http://www.utexas.edu/world/lecture/statistics/)  
Statistics

[www.utexas.edu/world/lecture/zoology/](http://www.utexas.edu/world/lecture/zoology/)  
Zoology

The National Science Foundation (NSF) funds research and education in most fields of science and engineering. Grantees are wholly responsible for conducting their project activities and preparing the results for publication. Thus, the Foundation does not assume responsibility for such findings or their interpretation.

NSF welcomes proposals from all qualified scientists, engineers and educators. The Foundation strongly encourages women, minorities, and persons with disabilities to compete fully in its programs. In accordance with federal statutes, regulations, and NSF policies, no person on grounds of race, color, age, sex, national origin, or disability shall be excluded from participation in, be denied the benefits of, or be subjected to discrimination under any program or activity receiving financial assistance from NSF (unless otherwise specified in the eligibility requirements for a particular program).

*Facilitation Awards for Scientists and Engineers with Disabilities* (FASSED) provide funding for special assistance or equipment to enable persons with disabilities (investigators and other staff, including student research assistants) to work on NSF-supported projects. See the program announcement or contact the program coordinator at (703) 306-1636.

The National Science Foundation has Telephonic Device for the Deaf (TDD) and Federal Information Relay Service (FIRS) capabilities that enable individuals with hearing impairments to communicate with the Foundation regarding NSF programs, employment, or general information. TDD may be accessed at (703) 306-0090 or through FIRS on 1-800-877-8339.

### DISCLAIMER

Any opinions, findings, conclusions or recommendations expressed in this report are those of the participants, and do not necessarily represent the official views, opinions, or policy of the National Science Foundation.



4201 Wilson Boulevard  
Arlington, VA 22230  
Phone (703) 306-1234  
TDD (703) 306-0900

Design: Low + Associates Inc.

NSF 99-150

[www.ehr.nsf.gov/EHR/HRD/ge/ge-index.htm](http://www.ehr.nsf.gov/EHR/HRD/ge/ge-index.htm)



[www.nsf.gov](http://www.nsf.gov)