

Summary Statistics

Table 1. Crude Oil Prices
(Dollars per Barrel)

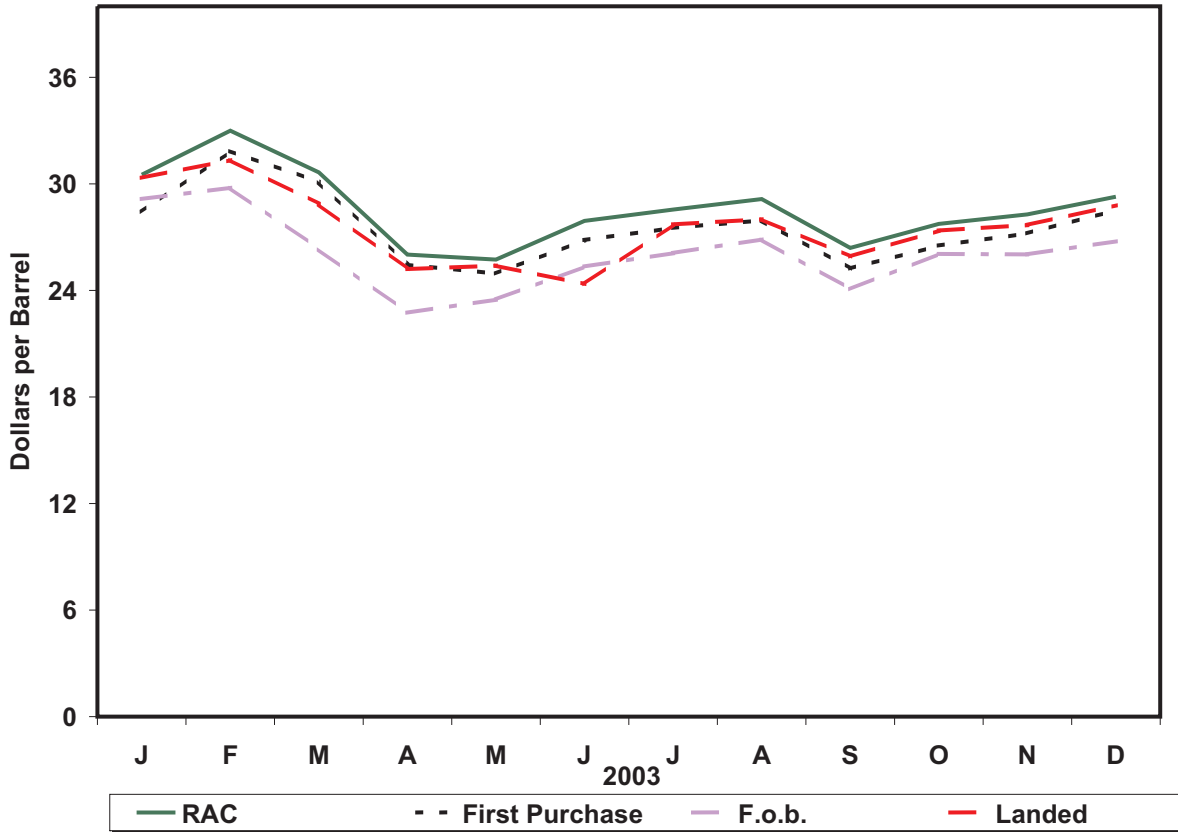
Year Month	Domestic First Purchase Prices	Average F.O.B. ^a Cost of Crude Oil Imports ^b	Average Landed Cost of Crude Oil Imports ^b	Refiner Acquisition Cost of Crude Oil		
				Domestic	Imported	Composite
1978	9.00	13.29	14.35	10.61	14.57	12.46
1979	12.64	20.07	21.45	14.27	21.67	17.72
1980	21.59	32.37	33.67	24.23	33.89	28.07
1981	31.77	35.15	36.47	34.33	37.05	35.24
1982	28.52	32.02	33.18	31.22	33.55	31.87
1983	26.19	27.81	28.93	28.87	29.30	28.99
1984	25.88	27.60	28.54	28.53	28.88	28.63
1985	24.09	25.84	26.67	26.66	26.99	26.75
1986	12.51	12.52	13.49	14.82	14.00	14.55
1987	15.40	16.69	17.65	17.76	18.13	17.90
1988	12.58	13.25	14.08	14.74	14.56	14.67
1989	15.86	16.89	17.68	17.87	18.08	17.97
1990	20.03	20.37	21.13	22.59	21.76	22.22
1991	16.54	16.89	18.02	19.33	18.70	19.06
1992	15.99	16.77	17.75	18.63	18.20	18.43
1993	14.25	14.71	15.72	16.67	16.14	16.41
1994	13.19	14.18	15.18	15.67	15.51	15.59
1995	14.62	15.69	16.78	17.33	17.14	17.23
1996	18.46	19.32	20.31	20.77	20.64	20.71
1997	17.23	16.94	18.11	19.61	18.53	19.04
1998	10.87	10.76	11.84	13.18	12.04	12.52
1999	15.56	16.47	17.23	17.90	17.26	17.51
2000	26.72	26.27	27.53	29.11	27.70	28.26
2001						
January	24.64	22.46	24.04	26.83	24.49	25.45
February	25.27	23.01	24.23	27.66	24.97	26.09
March	22.98	20.88	22.89	25.64	23.01	24.05
April	23.39	21.71	23.06	25.12	22.99	23.87
May	24.06	22.71	24.14	26.37	24.63	25.31
June	23.43	22.74	23.83	26.30	23.95	24.92
July	22.82	21.43	22.88	25.13	22.76	23.76
August	23.08	22.02	23.29	25.44	23.77	24.44
September	22.37	21.01	22.22	25.48	22.51	23.73
October	18.73	17.15	18.38	21.79	18.76	20.04
November	16.40	15.03	16.24	18.99	16.06	17.24
December	15.54	15.22	16.05	17.34	15.95	16.52
2001	21.84	20.46	21.82	24.33	22.00	22.95
2002						
January	15.89	16.01	17.29	17.84	17.04	17.38
February	16.93	17.67	19.17	18.70	18.24	18.43
March	20.28	21.60	22.24	21.61	22.29	22.00
April	22.52	23.04	24.15	24.26	23.98	24.10
May	23.51	23.16	24.49	25.78	24.44	25.03
June	22.59	22.63	23.95	24.81	23.45	24.05
July	23.51	23.72	25.01	25.37	24.99	25.16
August	24.76	24.57	25.93	26.87	25.68	26.19
September	26.08	25.80	26.78	28.40	27.14	27.66
October	25.29	24.32	25.58	27.82	25.99	26.70
November	23.38	22.42	24.22	26.02	23.68	24.60
December	25.29	25.86	27.08	27.25	26.68	26.93
2002	22.51	22.63	23.91	24.65	23.71	24.10
2003						
January	28.42	29.15	30.34	30.82	30.30	30.52
February	31.85	29.78	31.34	34.05	32.23	33.00
March	30.10	26.32	28.86	32.70	29.23	30.65
April	25.45	22.74	25.20	28.55	24.48	26.02
May	24.95	23.48	25.40	26.75	25.15	25.74
June	26.84	25.34	27.36	29.07	27.22	27.92
July	27.52	26.10	27.72	29.54	27.95	28.55
August	27.94	26.87	28.01	30.28	28.50	29.15
September	25.23	24.07	25.91	27.75	25.66	26.39
October	26.53	26.06	27.37	28.43	27.32	27.75
November	27.21	26.03	27.68	29.55	27.47	28.28
December	28.53	26.77	28.80	30.27	28.63	29.28
2003	27.56	25.86	27.69	29.82	27.71	28.53

^a Free on Board. See Glossary.

^b Values through 1980 reflect the month of reporting; values since then reflect the month of acquisition, which can be the month of loading, the month of landing, or sometime between those events. Prices for crude oil can be determined at a time other than the acquisition date. See the Explanatory Notes section for additional detail.

Sources: Domestic first purchase prices -- See "Sources" from Table 21. Crude oil imports costs -- See "Sources" from Table 24. Refiner acquisition costs -- Energy Information Administration, Form FEA-P110-M-1, "Refiners' Monthly Cost Allocation Report," January 1978 through June 1978; Form ERA-49, "Domestic Crude Oil Entitlements Program Refiners' Monthly Report," July 1978 through December 1980; Form EIA-14, "Refiners' Monthly Cost Report," January 1981 to present.

Figure 1. Crude Oil Prices



Sources: Energy Information Administration, Form EIA-182, "Domestic Crude Oil First Purchase Report"; Form EIA-856, "Monthly Foreign Crude Oil Acquisition Report"; and Form EIA-14, "Refiners' Monthly Cost Report."

Table 2. U.S. Refiner Prices of Petroleum Products to End Users
(Cents per Gallon Excluding Taxes)

Year Month	Motor Gasoline	Aviation Gasoline	Kerosene- Type Jet Fuel	Propane (Consumer Grade)	Kerosene	No. 1 Distillate	No. 2 Distillate			No. 4 Fuel ^a	Residual Fuel Oil
							No. 2 Diesel Fuel	No. 2 Fuel Oil	Average		
1978	48.4	51.6	38.7	33.5	42.1	41.0	37.7	40.0	39.6	31.1	29.8
1979	71.3	68.9	54.7	35.7	58.5	57.2	58.5	51.6	55.1	47.9	43.6
1980	103.5	108.4	86.8	48.2	90.2	83.4	81.8	78.8	80.4	68.2	60.7
1981	114.7	130.3	102.4	56.5	112.3	103.9	99.5	91.4	95.8	79.7	75.6
1982	106.0	131.2	96.3	59.2	108.9	102.3	94.2	90.5	92.5	75.0	67.6
1983	95.4	125.5	87.8	70.9	96.1	96.2	82.6	91.6	83.9	76.6	65.1
1984	90.7	123.4	84.2	73.7	103.6	92.7	82.3	91.6	83.7	79.6	68.7
1985	91.2	120.1	79.6	71.7	103.0	88.0	78.9	84.9	79.9	77.3	61.0
1986	62.4	101.1	52.9	74.5	79.0	62.0	47.8	56.0	49.1	48.9	34.3
1987	66.9	90.7	54.3	70.1	77.0	60.4	55.1	58.1	55.6	51.3	42.3
1988	67.3	89.1	51.3	71.4	73.8	56.4	50.0	54.4	50.7	46.1	33.4
1989	75.6	99.5	59.2	61.5	70.9	66.1	58.5	58.7	58.5	51.2	38.5
1990	88.3	112.0	76.6	74.5	92.3	81.9	72.5	73.4	72.6	62.2	44.4
1991	79.7	104.7	65.2	73.0	83.8	74.0	64.8	66.5	65.0	58.0	34.0
1992	78.7	102.7	61.0	64.3	78.8	66.6	61.9	62.7	62.0	52.6	33.6
1993	75.9	99.0	58.0	67.3	75.4	66.6	60.2	60.2	60.2	50.1	33.7
1994	73.8	95.7	53.4	53.0	66.0	64.0	55.4	57.2	55.6	50.1	35.2
1995	76.5	100.5	54.0	49.2	58.9	62.0	56.0	56.2	56.0	50.5	39.2
1996	84.7	111.6	65.1	60.5	74.0	72.6	68.1	67.3	68.0	60.3	45.5
1997	83.9	112.8	61.3	55.2	74.5	68.9	64.2	63.6	64.2	56.5	42.3
1998	67.3	97.5	45.2	40.5	50.1	55.1	49.4	48.2	49.2	42.8	30.5
1999	78.1	105.9	54.3	45.8	60.5	62.1	58.4	55.8	58.0	47.4	37.4
2000	110.6	130.6	89.9	60.3	112.3	98.8	93.5	92.7	93.4	76.9	60.2
2001											
January	106.8	128.5	88.3	82.3	126.0	103.3	96.2	99.6	96.7	86.2	61.5
February	106.7	129.2	87.0	67.0	122.1	97.2	91.9	94.3	92.3	81.2	59.5
March	103.9	124.5	81.1	57.6	112.8	89.7	84.2	86.6	84.5	73.1	57.1
April	117.7	134.9	80.2	57.0	100.6	89.9	86.3	86.1	86.3	68.9	53.0
May	130.1	150.9	84.0	54.3	94.1	98.3	93.0	90.1	92.7	66.8	53.5
June	120.7	145.1	83.6	50.5	93.8	94.1	90.6	84.8	90.0	62.8	52.4
July	103.2	134.6	76.8	45.1	83.4	86.6	81.4	78.1	81.1	61.4	51.5
August	102.5	136.3	77.8	46.3	84.2	92.0	84.6	82.1	84.4	62.4	51.0
September	109.2	142.4	82.4	43.7	94.9	100.5	89.5	88.8	89.4	60.5	53.3
October	89.9	125.3	67.5	44.7	94.2	87.7	77.2	72.4	76.6	56.6	49.2
November	76.9	119.4	62.5	43.5	100.9	76.7	68.5	65.8	68.1	54.5	42.8
December	68.5	115.8	55.6	40.2	98.1	68.3	60.9	62.7	61.1	53.5	42.0
2001	103.2	132.3	77.5	50.6	104.5	90.2	84.2	82.9	84.0	67.9	53.1
2002											
January	70.6	111.8	58.2	38.1	98.0	68.2	60.5	63.6	61.0	57.1	44.2
February	71.8	110.6	58.5	35.0	99.6	69.5	61.6	62.3	61.7	54.5	43.3
March	87.2	122.6	64.4	39.5	101.3	77.9	70.2	70.1	70.2	59.5	49.7
April	100.4	129.8	70.1	41.7	87.3	82.8	75.3	72.0	74.9	66.1	56.0
May	99.9	128.9	70.9	40.5	91.5	83.8	75.5	70.9	74.9	64.7	58.1
June	99.1	127.3	68.8	37.9	83.6	80.5	73.7	67.8	73.0	62.6	58.2
July	100.3	139.2	72.2	38.4	80.7	82.5	75.6	70.9	75.0	65.5	58.6
August	100.1	136.9	75.3	41.5	79.8	85.1	79.5	73.4	78.6	68.2	61.4
September	100.1	139.1	82.8	46.9	99.1	93.4	86.7	81.8	86.1	71.0	63.8
October	104.0	143.0	84.7	47.1	111.1	97.7	89.1	81.8	88.2	72.0	65.8
November	101.2	141.8	76.7	46.9	104.4	95.3	84.0	80.0	83.4	72.5	60.1
December	98.1	139.8	81.1	49.9	115.2	94.5	85.9	87.5	86.2	81.1	62.0
2002	94.7	128.8	72.1	41.9	99.0	82.8	76.2	73.7	75.9	65.7	56.9
2003											
January	106.0	139.7	91.4	57.3	121.0	98.2	93.2	98.3	94.1	W	75.4
February	122.1	W	101.8	69.5	137.2	109.3	110.3	114.5	110.9	W	83.9
March	130.1	W	104.3	68.0	138.6	113.5	111.3	112.9	111.6	105.1	81.1
April	120.0	W	82.1	52.7	127.7	96.1	94.2	91.2	93.8	77.4	64.3
May	110.0	139.8	75.9	53.9	NA	95.1	85.5	81.1	85.0	77.1	61.9
June	109.4	145.7	76.6	56.0	90.8	94.2	86.4	81.6	85.8	69.4	63.9
July	110.6	151.9	81.7	54.3	89.8	93.6	88.4	82.8	87.7	72.3	70.1
August	123.1	162.2	87.2	55.3	100.7	100.2	94.2	86.9	93.2	72.6	69.8
September	126.5	158.9	81.7	53.8	NA	96.9	88.9	81.4	87.9	70.2	64.6
October	115.0	150.8	84.5	55.8	117.2	101.8	91.9	88.2	91.4	74.9	65.2
November	109.5	W	87.8	55.9	120.9	101.9	91.7	89.1	91.3	77.7	66.7
December	106.5	146.6	92.9	61.3	NA	103.3	93.8	94.5	93.9	84.5	66.8
2003	115.6	149.3	87.2	57.7	122.4	101.7	94.4	93.3	94.2	85.6	69.8

NA = Not available.

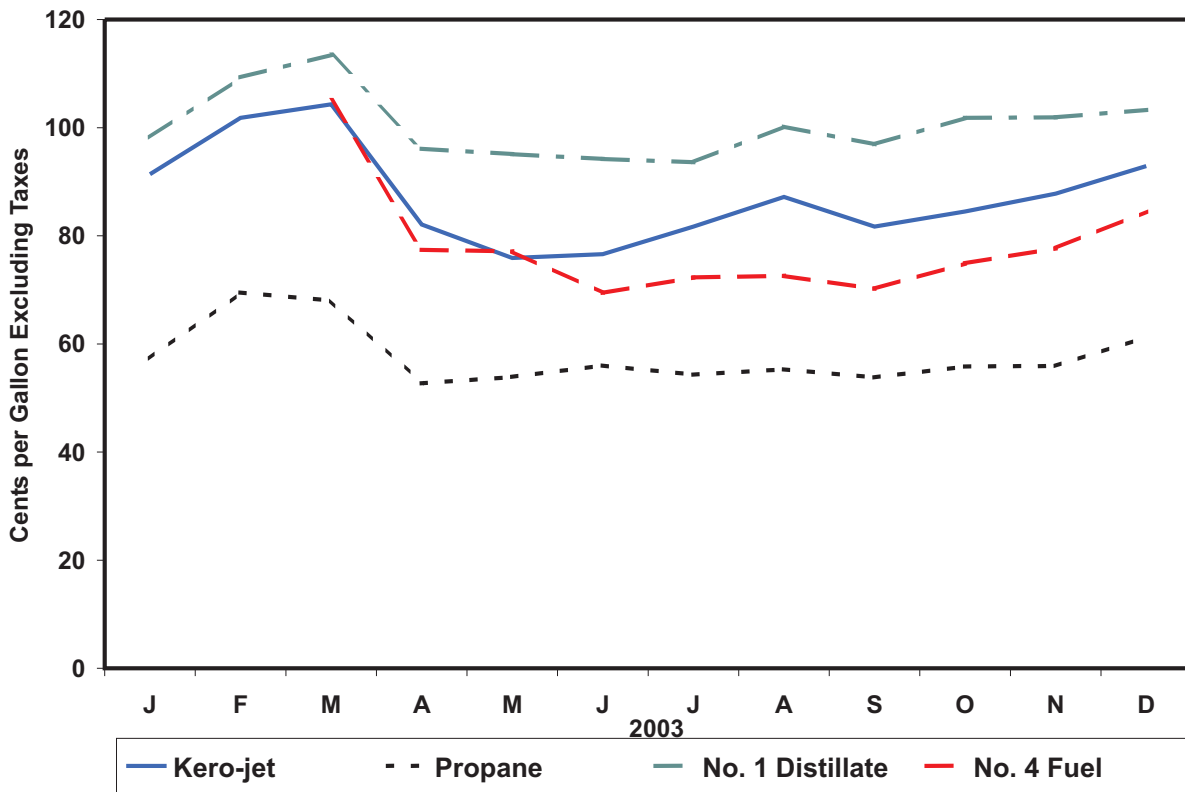
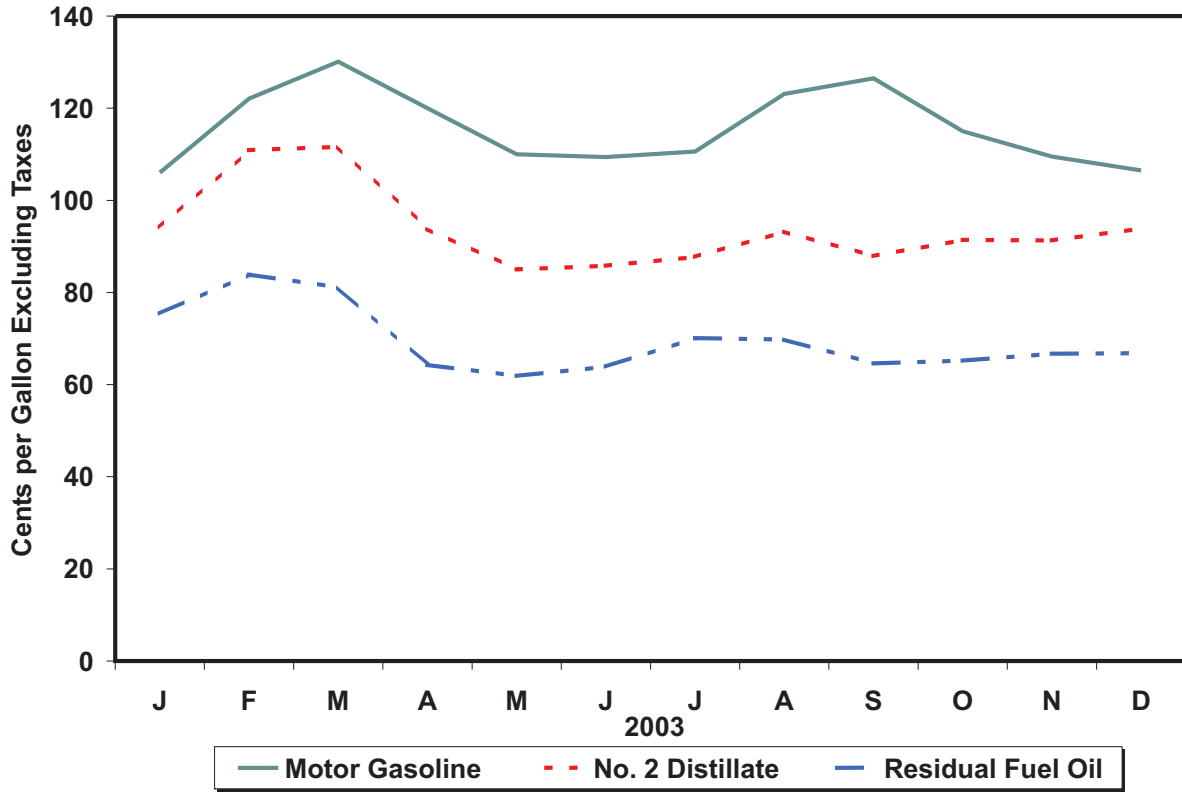
W = Withheld to avoid disclosure of individual company data.

^a Includes No. 4 fuel oil and No. 4 diesel fuel.

Note: Motor gasoline averages and totals prior to October 1993 include leaded gasoline.

Sources: Energy Information Administration Form EIA-782A, "Refiners'/Gas Plant Operators' Monthly Petroleum Product Sales Report," January 1983 forward; Form EIA-460, "Petroleum Industry Monthly Report for Product Prices," source for backcast estimates prior to January 1983.

Figure 2. U.S. Refiner Retail Petroleum Product Prices



Source: Energy Information Administration, Form EIA-782A, "Refiners' / Gas Plant Operators' Monthly Petroleum Product Sales Report."

Table 3. U.S. Refiner Volumes of Petroleum Products to End Users

(Million Gallons per Day)

Year Month	Motor Gasoline	Aviation Gasoline	Kerosene- Type Jet Fuel	Propane (Consumer Grade)	Kerosene	No. 1 Distillate	No. 2 Distillate			No. 4 Fuel ^a	Residual Fuel Oil
							No. 2 Diesel Fuel	No. 2 Fuel Oil	Total		
1983	51.1	0.4	30.8	3.1	0.2	0.5	23.3	3.7	27.0	0.7	28.3
1984	57.6	0.3	32.9	3.3	0.3	0.5	26.3	4.9	31.2	0.7	32.9
1985	57.5	0.3	34.6	3.7	0.3	0.5	25.0	5.0	29.9	0.5	25.2
1986	61.2	0.3	35.1	3.4	0.3	0.4	24.4	4.4	28.8	0.7	31.6
1987	61.0	0.2	36.8	3.8	0.3	0.4	24.1	4.5	28.5	0.8	29.0
1988	61.0	0.2	38.2	4.3	0.3	0.4	24.5	4.6	29.1	1.1	30.2
1989	61.2	0.2	40.1	2.8	0.3	0.5	24.3	4.5	28.8	0.9	30.4
1990	60.3	0.2	39.9	2.7	0.2	0.5	22.2	3.6	25.9	0.8	25.9
1991	61.2	0.2	38.5	3.1	0.2	0.5	21.1	3.2	24.4	0.7	24.0
1992	59.0	0.2	39.8	3.8	0.2	0.5	21.5	3.1	24.6	0.6	22.4
1993	57.2	0.2	41.7	3.5	0.2	0.4	20.8	2.9	23.8	0.6	17.2
1994	55.0	0.2	45.2	2.2	0.4	0.4	21.3	3.4	24.6	0.8	13.5
1995	55.9	0.2	45.7	3.2	0.6	0.3	21.6	3.3	24.9	0.5	11.6
1996	57.5	0.2	48.7	3.1	0.4	0.3	21.9	3.1	25.0	0.4	12.9
1997	61.1	0.2	49.7	3.2	0.3	0.4	22.0	3.0	25.0	0.3	13.4
1998	63.3	0.2	48.9	3.1	0.4	0.4	21.1	3.2	24.3	0.3	14.4
1999	62.0	0.1	47.0	3.6	0.2	0.3	21.1	3.0	24.1	0.3	13.9
2000	60.9	0.2	49.3	2.9	0.2	0.3	22.6	2.8	25.4	0.3	13.1
2001											
January	58.1	0.1	48.7	2.3	0.4	0.6	25.0	4.3	29.3	0.7	20.6
February	61.7	0.1	49.9	2.8	0.3	0.5	23.6	3.6	27.2	0.6	17.3
March	62.9	0.2	50.9	4.1	0.2	0.4	24.4	3.5	27.9	0.5	16.2
April	62.3	0.2	49.9	2.7	0.2	0.2	23.9	2.9	26.8	0.4	16.8
May	62.9	0.1	52.7	3.1	0.1	0.2	23.5	2.8	26.3	0.3	17.9
June	65.4	0.1	52.8	3.2	0.1	0.2	23.8	2.5	26.3	0.2	14.6
July	62.5	0.1	53.4	3.6	0.1	0.2	22.7	2.3	25.1	0.3	13.7
August	64.4	0.1	54.9	3.9	0.3	0.2	23.6	2.6	26.2	0.3	13.6
September	62.2	0.1	45.2	5.4	0.1	0.2	21.4	2.1	23.6	0.2	12.6
October	60.9	0.1	45.4	4.9	0.1	0.3	22.9	3.3	26.1	0.3	11.1
November	60.0	0.1	46.2	3.5	0.1	0.4	21.3	3.4	24.7	0.5	11.6
December	60.8	0.1	46.0	4.1	0.2	0.4	19.3	3.1	22.4	0.4	11.7
2001	62.0	0.1	49.7	3.6	0.2	0.3	22.9	3.0	26.0	0.4	14.8
2002											
January	60.2	0.1	46.2	3.3	0.2	0.5	20.2	3.2	23.3	0.5	10.5
February	63.9	0.1	46.7	2.9	0.2	0.4	20.8	3.3	24.1	0.5	10.8
March	62.8	0.1	50.3	2.7	0.1	0.4	20.7	2.9	23.7	0.4	10.0
April	64.0	0.1	50.3	3.1	0.1	0.2	21.6	2.8	24.4	0.3	10.2
May	64.5	0.2	48.8	2.5	0.1	0.2	21.2	2.8	24.0	0.2	9.4
June	64.9	0.2	50.5	2.9	NA	0.2	18.9	2.8	21.7	0.3	10.4
July	64.6	0.1	53.1	2.2	0.1	0.2	18.7	2.8	21.5	0.4	9.6
August	66.7	0.1	50.9	1.7	0.1	0.2	19.2	3.1	22.3	0.4	10.5
September	62.4	0.1	49.9	2.3	NA	0.2	19.0	2.5	21.4	0.2	9.9
October	63.3	0.1	49.4	2.5	0.1	0.3	19.6	3.0	22.7	0.2	9.7
November	63.3	0.1	46.5	3.1	0.2	0.3	18.2	3.3	21.5	0.3	11.7
December	63.1	0.1	45.9	2.7	0.2	0.4	17.2	3.6	20.8	0.4	12.7
2002	63.6	0.1	49.1	2.6	0.1	0.3	19.6	3.0	22.6	0.4	10.4
2003											
January	60.2	0.1	42.4	2.9	0.3	0.4	17.6	3.6	21.1	W	11.4
February	60.8	W	44.2	1.9	0.3	0.4	18.9	3.5	22.3	W	12.2
March	60.8	W	44.3	2.3	0.3	0.4	18.3	3.3	21.6	0.4	12.1
April	61.7	W	42.8	2.0	0.1	0.2	16.4	2.7	19.1	0.3	10.9
May	66.3	0.2	44.1	1.8	NA	0.1	17.0	2.5	19.5	0.2	10.4
June	66.4	0.1	43.9	1.9	0.1	0.2	16.4	2.4	18.8	0.2	11.9
July	66.8	0.1	45.1	2.6	0.1	0.2	17.0	2.3	19.3	0.2	10.5
August	66.8	0.1	45.4	2.5	0.1	0.2	16.1	2.5	18.6	0.2	9.8
September	63.9	0.1	45.4	2.7	NA	0.2	15.5	2.2	17.7	0.2	10.3
October	64.6	0.1	43.7	3.0	0.1	0.2	16.4	2.5	18.9	0.3	9.7
November	63.8	W	43.1	2.7	0.1	0.3	15.9	2.6	18.5	0.3	8.2
December	63.4	0.1	44.1	3.1	NA	0.4	15.3	2.8	18.1	0.5	10.8
2003	63.8	0.1	44.0	2.5	0.1	0.3	16.7	2.7	19.5	0.3	10.7

NA = Not available.

W = Withheld to avoid disclosure of individual company data.

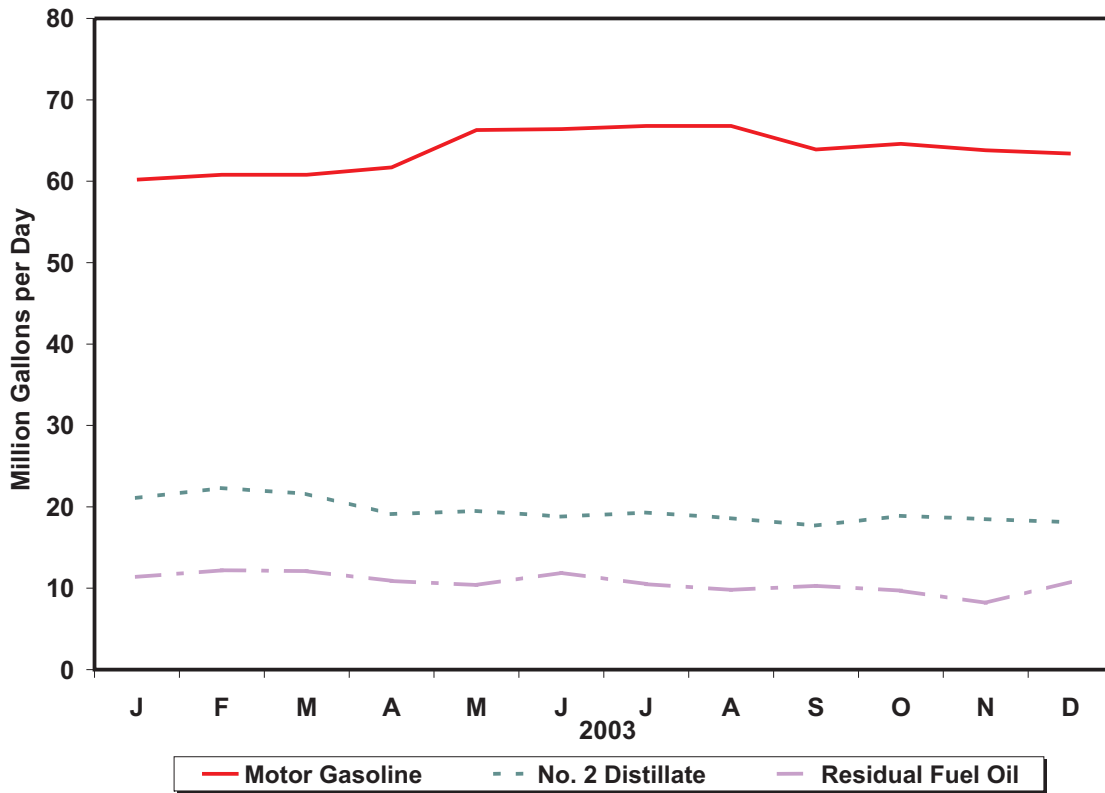
^a Includes No. 4 fuel oil and No. 4 diesel fuel.

Note: Motor gasoline averages and totals prior to October 1993 include leaded gasoline.

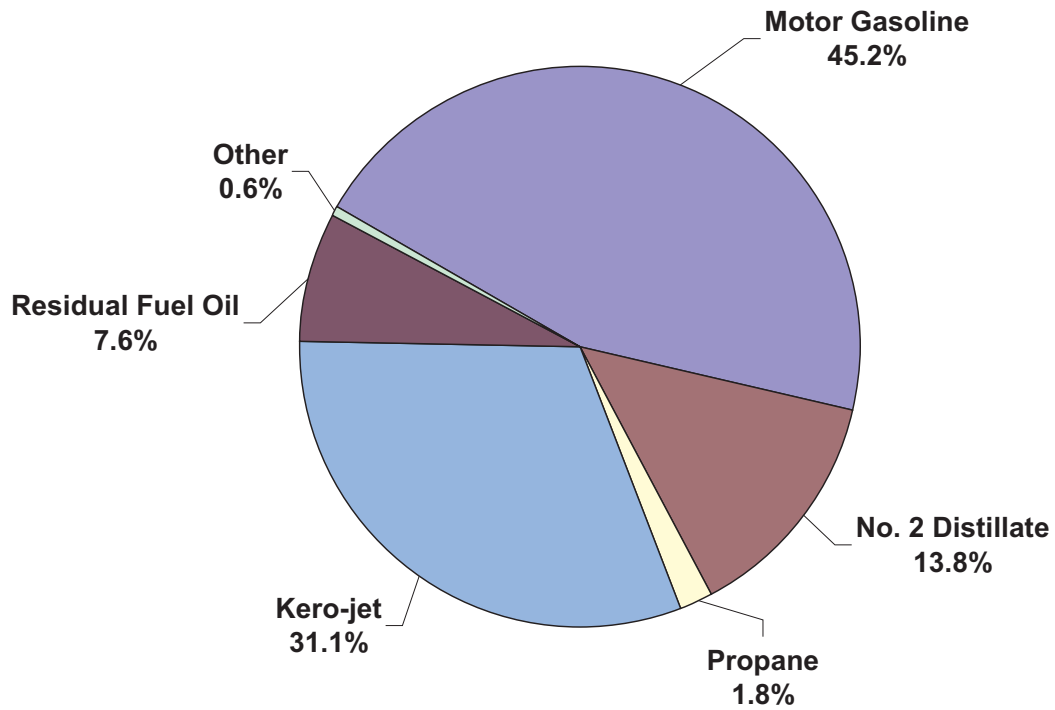
Note: Totals may not equal the sum of the components due to rounding.

Source: Energy Information Administration Form EIA-782A, "Refiners/Gas Plant Operators' Monthly Petroleum Product Sales Report."

Figure 3. U.S. Refiner Retail Petroleum Product Volumes



Percentages of Refiner Retail Volumes



Source: Energy Information Administration, Form EIA-782A, "Refiners' /Gas Plant Operators' Monthly Petroleum Product Sales Report."

Table 4. U.S. Refiner Prices of Petroleum Products for Resale
(Cents per Gallon Excluding Taxes)

Year Month	Motor Gasoline	Aviation Gasoline	Kerosene-Type Jet Fuel	Propane (Consumer Grade)	Kerosene	No. 1 Distillate	No. 2 Distillate			No. 4 Fuel ^a	Residual Fuel Oil
							No. 2 Diesel Fuel	No. 2 Fuel Oil	Average		
1978	43.4	53.7	38.6	23.7	40.4	40.6	36.5	36.9	36.7	30.5	26.3
1979	63.7	72.1	66.0	29.1	62.4	58.3	57.4	56.9	57.1	47.0	39.9
1980	94.1	112.8	86.8	41.5	86.4	88.0	80.1	80.3	80.2	67.0	52.8
1981	106.4	125.0	101.2	46.6	106.6	107.1	97.2	97.6	97.4	78.3	66.3
1982	97.3	122.8	95.3	42.7	101.8	103.8	91.4	91.4	91.4	73.7	61.2
1983	88.2	117.8	85.4	48.4	89.2	89.6	80.8	81.5	81.2	72.6	60.9
1984	83.2	116.5	83.0	45.0	91.6	89.2	80.3	82.1	81.3	70.7	65.4
1985	83.5	113.0	79.4	39.8	87.4	86.3	77.2	77.6	77.4	67.2	57.7
1986	53.1	91.2	49.5	29.0	60.6	57.9	45.2	48.6	47.0	40.9	30.5
1987	58.9	85.9	53.8	25.2	59.2	59.9	53.4	52.7	53.1	46.2	38.5
1988	57.7	85.0	49.5	24.0	54.9	54.9	47.3	47.3	47.3	42.5	30.0
1989	65.4	95.0	58.3	24.7	66.9	66.8	56.7	56.5	56.6	48.0	36.0
1990	78.6	106.3	77.3	38.6	83.9	83.8	69.4	69.7	69.5	59.0	41.3
1991	69.9	100.1	65.0	34.9	72.3	73.0	61.5	62.2	61.8	55.6	31.4
1992	67.7	99.1	60.5	32.8	63.2	65.2	59.1	57.9	58.5	49.5	30.8
1993	62.6	96.5	57.7	35.1	60.4	64.6	57.0	54.4	55.9	48.8	29.3
1994	59.9	93.3	53.4	32.4	61.8	61.5	52.9	50.6	52.2	46.2	31.7
1995	62.6	97.5	53.9	34.4	58.0	62.5	53.8	51.1	53.0	46.3	36.3
1996	71.3	105.5	64.6	46.1	71.4	75.1	65.9	63.9	65.3	60.3	42.0
1997	70.0	106.5	61.3	41.6	65.3	72.3	60.6	59.0	60.2	55.1	38.7
1998	52.6	91.2	45.0	28.8	46.5	51.3	44.4	42.2	43.9	38.3	28.0
1999	64.5	100.7	53.3	34.2	55.0	63.4	54.6	49.3	53.6	43.0	35.4
2000	96.3	133.0	88.0	59.5	96.9	101.9	89.8	88.6	89.6	77.8	56.6
2001											
January	94.1	131.0	88.3	86.4	106.4	109.9	90.6	90.0	90.5	81.5	56.4
February	93.8	132.0	87.1	66.9	93.4	97.8	85.9	82.4	84.9	78.0	55.9
March	91.0	129.3	80.5	60.1	83.6	90.2	78.1	76.2	77.7	71.2	51.8
April	106.3	140.5	79.6	58.5	83.0	96.3	82.6	79.1	81.9	69.4	48.3
May	115.3	147.0	83.5	56.2	86.6	105.3	89.9	82.3	88.7	64.6	50.3
June	98.5	135.0	82.7	48.7	82.6	97.2	85.4	79.0	84.4	60.2	47.9
July	84.0	120.9	75.7	43.5	74.7	86.0	75.6	72.7	75.1	57.2	46.3
August	90.6	125.9	77.4	45.3	81.3	93.9	80.9	76.6	80.3	58.2	45.7
September	94.1	132.0	80.2	46.4	80.1	99.0	84.2	78.7	83.4	65.6	48.9
October	74.0	109.7	67.8	46.0	73.1	84.8	71.3	68.2	70.8	63.4	42.4
November	63.4	100.5	61.9	41.6	63.5	73.2	61.5	60.6	61.3	60.7	36.9
December	58.3	94.9	55.3	38.1	58.6	64.2	54.7	56.6	55.1	56.3	36.3
2001	88.6	125.6	76.3	54.0	82.1	88.3	78.4	75.6	77.9	69.7	47.6
2002											
January	61.2	97.5	57.2	37.4	61.9	63.2	54.6	57.6	55.4	56.8	38.2
February	62.8	99.8	57.1	36.4	61.1	63.1	56.7	57.8	57.0	55.4	35.9
March	78.4	105.1	63.9	39.7	69.8	72.0	66.6	64.5	66.2	60.8	43.7
April	87.1	118.9	69.1	41.6	70.5	80.2	70.9	68.3	70.4	66.6	51.2
May	85.9	114.4	69.6	40.8	71.1	79.6	70.6	68.4	70.3	64.5	54.5
June	85.6	116.7	67.8	37.9	69.4	77.1	68.2	66.0	67.9	61.9	53.4
July	87.8	118.9	71.4	37.5	73.2	78.3	71.0	68.9	70.7	61.4	53.7
August	87.4	115.5	73.8	41.5	76.4	84.9	75.7	71.3	75.0	63.4	58.4
September	88.9	119.2	81.5	47.1	85.5	95.2	83.4	78.3	82.6	69.4	58.7
October	93.0	123.7	84.5	48.9	88.5	97.5	85.7	79.6	84.6	72.1	60.7
November	85.0	116.1	75.1	49.4	81.3	94.7	78.7	74.8	77.9	67.0	58.7
December	85.9	113.2	79.9	53.3	87.9	93.9	82.0	80.8	81.7	71.9	64.1
2002	82.8	114.6	71.6	43.1	75.2	80.5	72.4	69.4	71.8	66.3	53.0
2003											
January	94.7	122.4	89.8	60.5	98.8	98.1	89.2	90.0	89.4	77.0	73.1
February	110.0	130.1	103.1	72.7	118.4	117.4	107.8	108.6	108.0	88.2	87.3
March	112.9	135.0	102.4	69.2	116.6	120.4	102.5	105.3	103.0	85.1	77.4
April	99.7	125.8	82.3	53.8	86.1	98.3	86.4	83.0	85.9	71.9	56.9
May	93.6	122.6	75.1	54.3	75.4	90.4	79.2	75.8	78.8	68.4	57.2
June	95.6	NA	76.9	57.1	77.4	87.9	81.0	76.9	80.4	70.1	58.0
July	98.2	129.5	81.3	55.9	82.8	91.1	83.7	78.9	83.1	71.8	61.7
August	110.2	139.7	86.2	58.6	88.2	100.4	88.8	83.6	88.1	73.6	63.4
September	102.5	134.9	80.8	56.7	82.7	93.2	80.7	77.3	80.2	78.1	58.6
October	98.2	131.3	83.7	59.7	91.6	101.8	87.0	84.2	86.6	75.2	60.1
November	94.3	124.4	86.5	58.7	89.5	100.2	86.5	84.2	86.2	80.3	62.7
December	93.9	124.4	90.7	64.8	97.0	100.9	89.2	88.6	89.1	W	62.3
2003	100.2	128.8	87.1	60.7	95.5	103.3	88.3	88.1	88.2	79.3	66.1

NA = Not available.

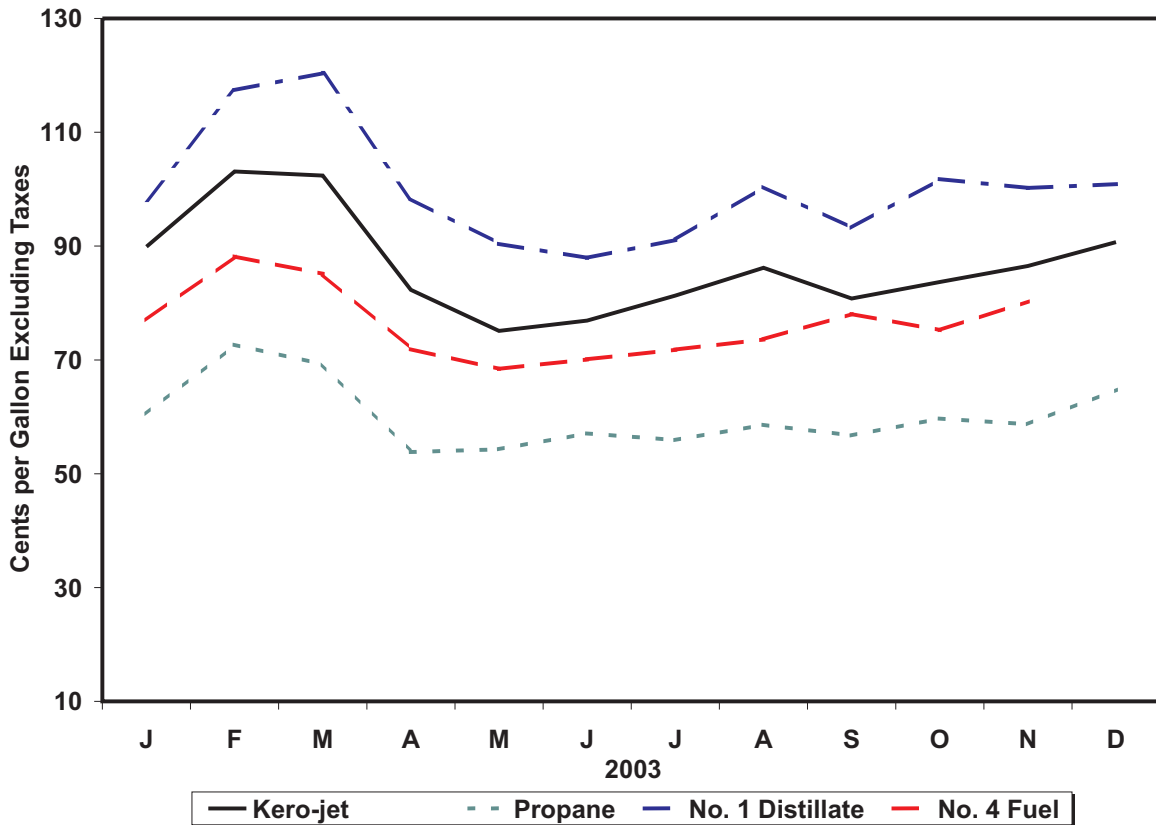
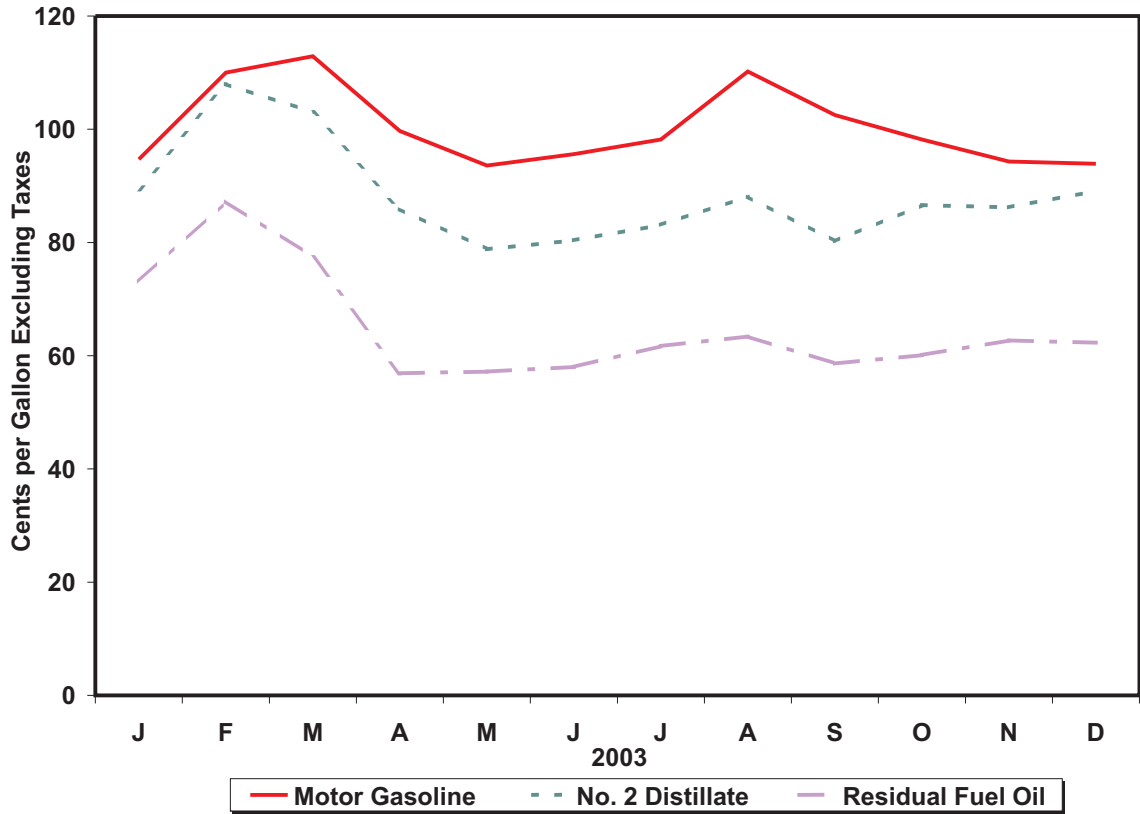
W = Withheld to avoid disclosure of individual company data.

^a Includes No. 4 fuel oil and No. 4 diesel fuel.

Note: Motor gasoline averages and totals prior to October 1993 include leaded gasoline.

Sources: Energy Information Administration Form EIA-782A, "Refiners'/Gas Plant Operators' Monthly Petroleum Product Sales Report," January 1983 forward; Form EIA-460, "Petroleum Industry Monthly Report for Product Prices," source for backcast estimates prior to January 1983.

Figure 4. U.S. Refiner Wholesale Petroleum Product Prices



Source: Energy Information Administration, Form EIA-782A, "Refiners' /Gas Plant Operators' Monthly Petroleum Product Sales Report."

Table 5. U.S. Refiner Volumes of Petroleum Products for Resale

(Million Gallons per Day)

Year Month	Motor Gasoline	Aviation Gasoline	Kerosene- Type Jet Fuel	Propane (Consumer Grade)	Kerosene	No. 1 Distillate	No. 2 Distillate			No. 4 Fuel ^a	Residual Fuel Oil
							No. 2 Diesel Fuel	No. 2 Fuel Oil	Total		
1983	242.5	0.7	5.4	26.0	2.5	2.4	38.1	47.3	85.5	0.9	20.2
1984	246.3	0.8	6.6	26.7	2.2	2.6	42.8	51.4	94.2	1.7	21.3
1985	256.9	0.7	7.6	29.2	2.4	2.7	43.3	53.9	97.3	1.2	19.9
1986	257.2	0.7	9.2	26.3	2.4	2.5	46.4	53.8	100.3	1.2	18.6
1987	257.2	0.8	10.1	27.0	2.3	2.0	44.3	49.3	93.6	1.5	16.9
1988	263.7	0.7	10.0	27.7	2.7	2.6	47.8	50.1	97.9	1.2	18.9
1989	260.7	0.7	8.6	25.9	2.7	2.7	50.7	46.7	97.5	1.2	21.0
1990	264.8	0.7	8.8	25.5	2.2	2.4	51.9	45.9	97.8	0.8	17.9
1991	261.3	0.7	8.7	25.4	2.1	2.4	51.5	46.9	98.3	0.4	17.8
1992	265.4	0.7	8.0	26.7	2.2	2.3	50.8	48.9	99.7	0.4	15.2
1993	266.9	0.6	8.3	27.9	2.3	2.3	58.0	43.6	101.7	0.4	12.6
1994	276.7	0.7	9.1	28.4	2.5	1.9	72.4	32.9	105.3	0.4	12.8
1995	288.8	0.6	9.9	30.6	2.4	1.7	75.9	31.0	106.9	0.3	13.6
1996	293.6	0.6	11.5	32.9	2.7	1.8	83.7	33.1	116.8	0.3	13.8
1997	292.7	0.6	11.3	32.2	2.5	1.6	88.7	31.2	119.9	0.2	11.5
1998	300.4	0.6	12.2	32.7	2.2	1.4	91.9	27.3	119.2	0.1	15.4
1999	306.9	0.7	15.2	33.6	2.4	1.7	95.5	24.3	119.9	0.2	11.5
2000	304.4	0.6	15.7	34.8	2.3	1.5	98.8	23.3	122.1	0.2	10.5
2001											
January	278.1	0.4	14.9	50.8	4.3	3.5	98.7	38.9	137.6	0.3	11.1
February	292.1	0.4	13.1	39.8	3.0	2.9	95.9	35.8	131.7	0.2	12.8
March	300.0	0.5	13.4	36.2	2.2	1.1	102.9	29.8	132.7	0.2	11.0
April	304.5	0.6	12.8	24.7	1.2	0.4	99.9	25.1	125.0	0.1	9.4
May	309.2	0.7	13.6	24.4	1.1	0.2	99.9	18.9	118.7	0.1	11.3
June	318.4	0.8	12.5	27.2	1.2	0.2	101.9	19.3	121.2	0.1	10.7
July	319.8	0.8	14.2	30.2	2.0	0.2	101.8	20.4	122.3	0.1	12.0
August	325.8	0.8	14.0	30.7	1.5	0.4	108.7	19.0	127.7	0.1	9.5
September	301.5	0.6	17.2	31.5	2.3	0.6	104.0	19.2	123.2	0.1	7.5
October	308.2	0.6	16.1	38.2	2.3	1.4	108.2	22.2	130.4	0.1	9.0
November	298.9	0.5	16.2	38.8	2.1	2.5	100.7	24.0	124.7	0.1	8.8
December	304.1	0.4	13.8	47.5	2.8	3.2	92.2	29.7	121.9	0.1	10.6
2001	305.2	0.6	14.3	35.0	2.2	1.4	101.3	25.2	126.4	0.1	10.3
2002											
January	290.4	0.4	10.0	41.9	3.4	3.0	95.5	33.7	129.2	0.1	8.2
February	293.9	0.4	12.5	37.4	3.0	2.4	92.0	30.5	122.5	0.1	7.5
March	299.9	0.5	13.1	32.9	1.6	1.4	91.0	26.6	117.6	0.1	8.6
April	315.3	0.6	11.3	27.4	1.6	0.4	101.7	20.2	121.9	0.1	9.7
May	325.5	0.8	10.4	26.2	1.1	0.2	104.1	18.3	122.3	NA	9.8
June	324.7	0.5	9.5	29.3	0.9	0.2	103.6	17.2	120.8	NA	9.1
July	326.6	0.8	12.4	25.1	1.1	0.2	103.4	18.0	121.4	NA	8.7
August	332.6	1.0	10.8	28.4	1.4	0.3	107.4	18.3	125.7	NA	9.6
September	302.7	0.7	13.4	27.4	1.4	0.6	105.2	19.9	125.1	NA	7.4
October	314.9	0.6	13.6	36.4	2.1	1.5	107.6	22.8	130.5	0.2	8.4
November	309.0	0.5	14.4	37.2	3.0	2.2	100.6	24.7	125.4	0.3	8.8
December	304.8	0.4	14.0	45.3	3.9	2.8	96.5	33.5	130.0	0.3	9.5
2002	311.8	0.6	12.1	32.9	2.0	1.3	100.8	23.6	124.4	0.1	8.8
2003											
January	291.6	0.3	13.3	48.8	4.6	3.0	103.8	32.8	136.6	0.4	8.6
February	289.2	0.4	12.8	44.4	3.8	2.4	105.4	29.3	134.7	0.2	7.6
March	292.2	0.5	14.8	32.3	2.2	0.9	104.2	24.8	129.0	0.1	9.5
April	305.0	0.5	10.9	30.1	1.6	0.3	109.4	19.2	128.6	0.1	6.3
May	314.7	0.5	10.8	28.6	1.3	0.2	105.9	16.3	122.3	NA	6.0
June	326.9	NA	12.0	30.0	1.8	0.2	109.0	17.0	126.0	NA	5.6
July	330.1	0.7	10.9	29.9	1.0	0.2	111.4	16.6	128.0	NA	4.6
August	335.5	0.7	11.6	30.9	1.1	0.2	109.3	15.4	124.7	NA	6.5
September	317.0	0.6	11.8	33.7	2.1	0.6	115.0	19.4	134.3	NA	5.5
October	319.0	0.5	12.0	38.7	2.3	1.2	119.1	19.3	138.4	0.1	4.9
November	305.2	0.4	13.1	40.3	2.9	2.3	106.2	17.7	123.9	NA	4.9
December	311.1	0.4	12.2	50.7	3.5	2.6	107.6	24.0	131.6	W	9.8
2003	311.6	0.5	12.2	36.5	2.3	1.2	108.9	20.9	129.8	0.1	6.7

NA = Not available.

W = Withheld to avoid disclosure of individual company data.

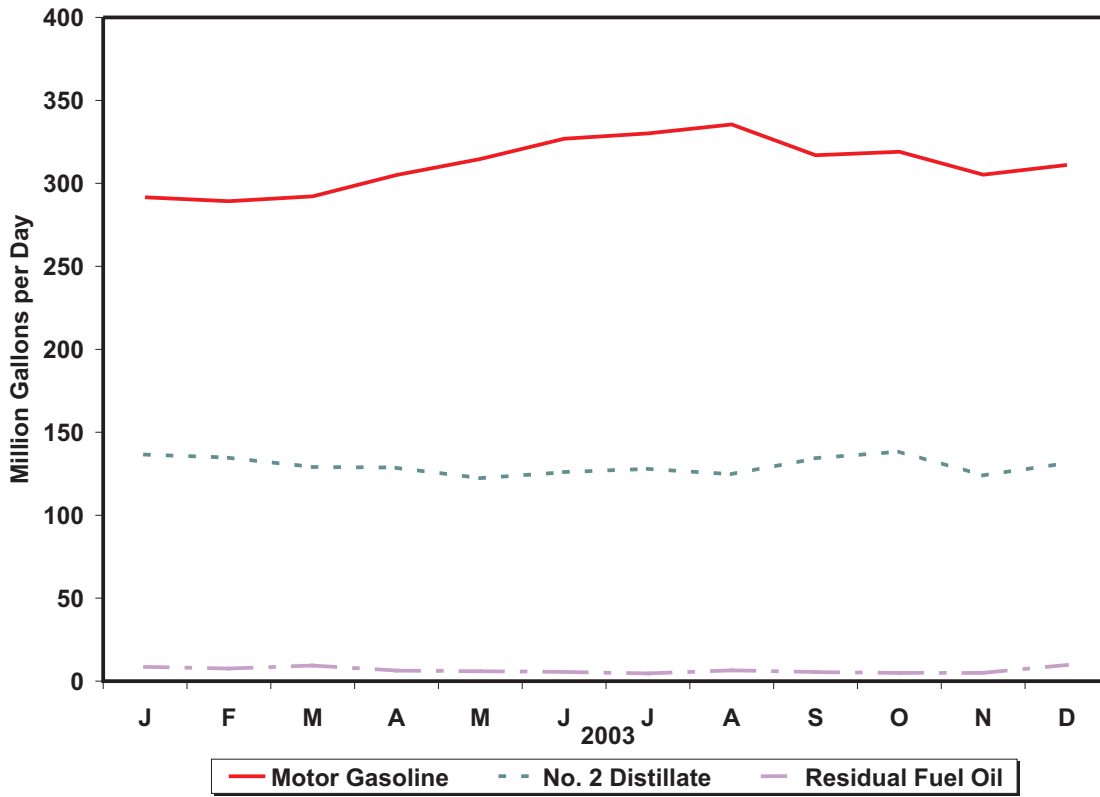
^a Includes No. 4 fuel oil and No. 4 diesel fuel.

Note: Motor gasoline averages and totals prior to October 1993 include leaded gasoline.

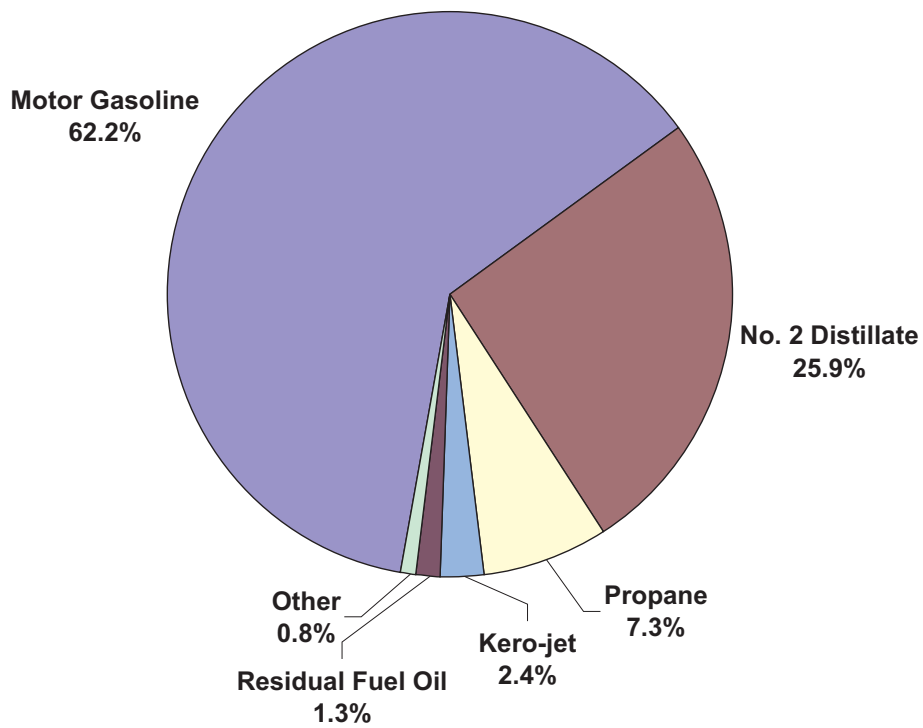
Note: Totals may not equal the sum of the components due to rounding.

Source: Energy Information Administration Form EIA-782A, "Refiners'/Gas Plant Operators' Monthly Petroleum Product Sales Report."

Figure 5. U.S. Refiner Wholesale Petroleum Product Volumes



Percentages of Refiner Wholesale Volumes



Source: Energy Information Administration, Form EIA-782A, "Refiners' /Gas Plant Operators' Monthly Petroleum Product Sales Report."

Table 6. U.S. Refiner Motor Gasoline Prices by Grade and Sales Type
(Cents per Gallon Excluding Taxes)

Year Month	Regular						Midgrade					
	Sales to End Users		Sales for Resale				Sales to End Users		Sales for Resale			
	Through Retail Outlets	Average ^a	DTW	Rack	Bulk	Average	Through Retail Outlets	Average ^a	DTW	Rack	Bulk	Average
1983	98.0	97.0	-	-	-	89.5	-	-	-	-	-	-
1984	92.2	91.4	-	-	-	84.2	-	-	-	-	-	-
1985	92.5	91.7	-	-	-	84.3	-	-	-	-	-	-
1986	62.4	61.6	-	-	-	52.2	-	-	-	-	-	-
1987	65.9	65.0	-	-	-	56.9	-	-	-	-	-	-
1988	64.9	64.1	-	-	-	54.8	-	-	-	-	-	-
1989	72.0	71.4	-	-	-	61.8	79.6	79.3	-	-	-	68.6
1990	85.3	84.9	-	-	-	75.8	92.3	92.1	-	-	-	81.4
1991	76.4	76.1	-	-	-	67.2	84.7	84.3	-	-	-	73.3
1992	74.6	74.3	-	-	-	64.5	83.1	82.7	-	-	-	70.8
1993	71.6	71.2	-	-	-	59.3	81.0	80.5	-	-	-	66.0
1994	69.5	68.9	64.6	54.7	50.2	56.6	79.1	78.5	70.4	58.4	NA	63.8
1995	72.3	71.7	68.2	57.6	53.4	59.3	81.3	80.8	73.7	61.9	NA	67.0
1996	81.2	80.7	77.0	67.2	62.2	68.5	90.1	89.6	82.4	70.9	NA	75.9
1997	80.3	79.8	76.4	65.6	61.5	67.3	89.8	89.5	82.2	69.4	71.1	74.9
1998	63.4	63.0	59.6	48.1	44.9	49.9	73.1	72.8	65.5	52.1	NA	57.6
1999	74.7	74.2	73.0	60.5	54.2	62.0	83.8	83.5	78.4	63.9	NA	69.6
2000	107.7	107.3	104.2	92.7	87.3	94.2	117.1	116.8	109.9	96.0	-	101.3
2001												
January	103.5	103.2	98.6	91.2	84.5	91.9	113.2	112.9	105.0	95.7	-	99.2
February	103.2	102.9	99.5	90.0	87.5	91.7	113.2	113.0	105.9	94.4	-	98.7
March	100.4	100.2	99.5	86.2	85.0	88.8	110.8	110.6	105.5	90.4	-	96.1
April	114.5	114.3	110.7	103.7	96.1	104.1	124.3	124.1	117.7	107.9	-	111.5
May	127.4	127.0	125.6	112.2	100.9	113.3	137.0	136.7	132.8	115.7	-	121.9
June	117.4	117.0	120.1	91.4	87.0	96.1	128.8	128.4	127.2	94.9	-	106.2
July	99.6	99.1	104.7	77.2	73.5	81.5	111.4	110.9	111.7	81.4	-	91.8
August	99.4	99.1	95.7	89.0	77.3	88.5	109.1	108.7	103.1	92.2	-	96.2
September	106.1	105.8	100.3	92.0	81.4	92.1	116.1	115.8	107.5	95.3	-	99.9
October	86.4	86.1	86.4	68.8	65.5	71.7	97.7	97.3	93.5	72.6	-	80.5
November	73.4	73.2	71.4	59.1	55.9	61.1	83.6	83.4	78.3	63.2	-	68.9
December	65.0	64.9	59.2	56.2	53.2	56.4	74.7	74.4	65.9	60.1	-	62.4
2001	100.0	99.7	97.7	84.8	78.6	86.5	110.3	110.0	104.2	88.8	-	94.5
2002												
January	67.3	67.2	62.5	58.9	55.3	59.1	76.7	76.5	70.1	62.8	-	65.6
February	68.4	68.3	65.8	59.8	56.9	60.7	77.9	77.7	74.1	63.6	-	67.6
March	84.2	83.9	81.3	76.3	68.3	76.3	93.4	93.2	90.2	80.3	-	84.0
April	97.3	97.1	95.1	84.0	75.7	84.8	107.4	107.1	104.3	88.1	-	94.1
May	96.7	96.4	94.5	83.0	74.5	83.6	106.8	106.5	103.5	86.5	-	92.6
June	95.8	95.6	94.9	82.5	74.0	83.3	105.8	105.5	103.7	85.9	-	92.4
July	97.1	96.8	95.5	85.1	76.4	85.5	107.1	106.7	104.0	89.0	-	94.1
August	96.7	96.5	95.9	84.4	76.8	85.1	107.1	106.8	104.7	88.6	-	94.1
September	96.8	96.6	94.9	86.0	78.9	86.6	106.9	106.6	103.7	90.2	-	95.0
October	100.9	100.7	94.8	91.6	83.3	91.0	110.8	110.5	103.1	95.8	-	98.2
November	97.8	97.5	95.5	80.8	75.8	82.7	108.3	108.0	103.6	84.3	-	90.7
December	94.7	94.4	92.2	83.3	75.8	83.7	105.0	104.6	100.3	86.9	-	91.3
2002	91.5	91.2	88.6	80.1	73.5	80.6	101.3	101.0	96.8	83.9	-	88.5
2003												
January	102.8	102.5	99.6	92.1	85.8	92.6	112.8	112.5	107.7	95.8	-	99.7
February	119.3	119.1	116.5	107.5	98.9	108.1	128.8	128.7	123.6	111.1	-	115.1
March	127.5	127.2	130.2	107.3	102.3	111.0	136.5	136.0	135.2	110.8	-	118.6
April	117.2	116.7	123.1	93.1	85.9	97.4	126.5	126.0	123.3	96.7	-	106.6
May	107.0	106.5	109.5	89.2	81.8	91.5	116.8	116.4	116.0	93.1	-	100.0
June	106.3	106.0	106.2	92.3	85.9	93.5	115.9	115.6	112.8	96.2	-	101.1
July	107.4	107.2	105.9	95.7	88.3	96.2	117.2	116.9	112.7	99.7	-	103.5
August	120.4	120.0	119.9	107.8	98.7	108.2	129.7	129.3	125.5	111.6	-	115.6
September	123.8	123.2	128.3	96.5	89.3	100.2	133.5	133.0	133.6	100.2	-	109.3
October	112.0	111.5	113.4	94.6	85.1	96.0	122.2	121.8	119.9	99.0	-	104.7
November	106.2	105.9	106.1	90.9	83.3	92.2	116.5	115.4	112.9	95.4	-	100.3
December	103.1	102.8	101.3	91.4	84.1	91.9	113.3	113.1	108.3	96.0	-	99.4
2003	112.7	112.3	113.4	96.5	88.8	98.1	122.2	121.8	119.6	100.4	-	106.1

See footnotes at end of table.

Table 6. U.S. Refiner Motor Gasoline Prices by Grade and Sales Type
(Cents per Gallon Excluding Taxes) — Continued

Year Month	Premium						All Grades					
	Sales to End Users		Sales for Resale				Sales to End Users		Sales for Resale			
	Through Retail Outlets	Average ^a	DTW	Rack	Bulk	Average	Through Retail Outlets	Average ^a	DTW	Rack	Bulk	Average
1983	108.0	105.7	-	-	-	96.4	96.4	95.4	-	-	-	88.2
1984	102.1	101.5	-	-	-	91.6	91.4	90.7	-	-	-	83.2
1985	103.0	102.3	-	-	-	92.2	92.1	91.2	-	-	-	83.5
1986	74.8	73.7	-	-	-	61.0	63.2	62.4	-	-	-	53.1
1987	79.0	78.4	-	-	-	67.1	67.8	66.9	-	-	-	58.9
1988	79.4	78.8	-	-	-	67.2	68.1	67.3	-	-	-	57.7
1989	87.4	86.8	-	-	-	74.9	76.3	75.6	-	-	-	65.4
1990	99.0	98.5	-	-	-	87.4	88.8	88.3	-	-	-	78.6
1991	91.2	90.7	-	-	-	79.2	80.0	79.7	-	-	-	69.9
1992	92.0	91.4	-	-	-	77.4	79.2	78.7	-	-	-	67.7
1993	89.6	88.9	-	-	-	72.2	76.5	75.9	-	-	-	62.6
1994	87.3	86.5	78.7	64.0	55.6	69.5	74.4	73.8	69.3	56.7	50.9	59.9
1995	89.7	89.0	82.2	67.3	58.3	72.2	77.1	76.5	72.9	59.8	54.0	62.6
1996	97.9	97.2	89.7	76.2	66.9	80.3	85.3	84.7	80.9	69.0	62.7	71.3
1997	97.9	97.3	89.5	74.9	65.8	79.2	84.4	83.9	80.3	67.4	62.0	70.0
1998	81.1	80.5	72.6	57.3	48.9	61.7	67.8	67.3	63.6	50.0	45.4	52.6
1999	91.2	90.6	85.1	68.7	58.5	72.6	78.5	78.1	76.5	62.1	54.9	64.5
2000	125.0	124.2	117.4	101.7	92.7	105.5	111.1	110.6	107.4	94.0	87.9	96.3
2001												
January	122.7	122.0	112.5	100.5	90.6	103.4	107.2	106.8	102.0	92.7	85.2	94.1
February	122.9	122.3	113.4	99.8	92.1	103.5	107.0	106.7	102.9	91.5	88.0	93.8
March	119.4	118.9	113.0	96.2	91.4	101.0	104.1	103.9	102.7	87.8	85.7	91.0
April	132.5	131.8	124.3	114.0	113.1	117.2	117.9	117.7	114.0	105.1	97.6	106.3
May	145.2	144.3	139.4	121.4	106.3	125.4	130.6	130.1	128.8	113.4	101.4	115.3
June	137.7	136.9	134.7	101.3	90.1	110.2	121.2	120.7	123.4	92.8	87.2	98.5
July	120.9	120.1	120.4	87.4	76.4	95.6	103.7	103.2	108.3	78.7	73.8	84.0
August	118.2	117.6	110.9	97.7	86.1	100.4	102.9	102.5	99.3	90.3	78.2	90.6
September	124.1	123.6	113.8	100.6	88.0	103.6	109.5	109.2	103.5	93.2	82.0	94.1
October	106.6	105.9	100.5	78.4	66.6	83.7	90.3	89.9	89.8	70.2	65.6	74.0
November	92.3	91.8	86.2	68.5	56.1	72.9	77.2	76.9	75.1	60.6	55.9	63.4
December	83.0	82.6	74.3	65.8	55.0	67.3	68.6	68.5	62.9	57.7	53.4	58.3
2001	118.1	117.5	111.2	93.6	83.0	98.0	103.5	103.2	100.9	86.2	79.1	88.6
2002												
January	84.5	84.2	76.9	68.7	59.8	70.6	70.7	70.6	66.1	60.4	55.8	61.2
February	85.8	85.4	79.5	69.5	60.4	72.0	71.9	71.8	69.4	61.4	57.2	62.8
March	101.0	100.4	94.4	85.8	78.5	88.0	87.4	87.2	84.7	77.8	69.2	78.4
April	115.5	114.8	109.4	94.3	85.4	97.9	100.8	100.4	98.7	85.5	76.6	87.1
May	115.4	114.7	109.1	93.0	81.7	96.6	100.3	99.9	98.2	84.4	75.1	85.9
June	114.4	113.8	109.0	92.3	79.8	95.9	99.4	99.1	98.5	84.0	74.5	85.6
July	115.3	114.7	109.5	95.1	85.0	98.2	100.6	100.3	99.0	86.7	77.1	87.8
August	115.5	115.0	110.6	94.8	83.4	98.3	100.4	100.1	99.6	86.0	77.3	87.4
September	115.4	114.9	109.7	96.3	85.3	99.2	100.4	100.1	98.6	87.6	79.5	88.9
October	118.6	118.0	109.9	101.4	89.3	102.7	104.3	104.0	98.6	93.1	84.0	93.0
November	117.0	116.4	111.0	91.0	80.0	95.7	101.5	101.2	99.4	82.3	76.3	85.0
December	113.6	113.0	107.9	93.4	80.1	96.0	98.4	98.1	96.1	84.8	76.3	85.9
2002	109.4	108.8	103.0	89.9	80.0	92.8	94.9	94.7	92.2	81.6	74.1	82.8
2003												
January	121.2	120.7	114.8	102.4	90.4	104.9	106.3	106.0	103.3	93.6	86.3	94.7
February	136.6	136.3	130.2	117.2	104.0	120.3	122.3	122.1	119.6	108.8	99.3	110.0
March	145.7	144.9	142.3	117.1	107.1	124.4	130.5	130.1	132.7	108.5	102.6	112.9
April	136.9	136.2	136.0	102.9	95.1	112.1	120.5	120.0	125.9	94.4	86.5	99.7
May	126.3	125.6	123.5	99.0	87.7	104.7	110.5	110.0	112.7	90.6	82.3	93.6
June	124.7	124.3	120.0	102.5	95.2	106.7	109.7	109.4	109.3	93.8	86.7	95.6
July	126.0	125.4	119.9	105.9	94.4	108.6	110.9	110.6	109.1	97.2	88.8	98.2
August	137.9	137.2	132.9	118.0	109.9	121.4	123.5	123.1	122.7	109.2	99.5	110.2
September	143.6	142.6	142.2	107.1	99.1	116.1	127.2	126.5	131.2	97.9	89.9	102.5
October	131.8	131.0	128.3	104.8	94.6	110.3	115.5	115.0	116.6	96.0	85.8	98.2
November	126.2	125.6	121.1	101.2	90.1	105.9	109.9	109.5	109.5	92.4	83.8	94.3
December	122.7	122.3	116.3	101.6	88.0	104.3	106.7	106.5	104.7	92.9	84.5	93.9
2003	131.2	130.5	126.9	106.4	95.5	111.3	116.0	115.6	116.4	97.8	89.3	100.2

Dash (-) = No data reported.

NA = Not available.

^a Includes sales through retail outlets as well as all direct sales to end users that were not made through company-operated retail outlets, e.g., sales to agricultural customers, commercial sales, and industrial sales.

Notes: Data for the 4th quarter of 1993 were derived from two separate survey systems. The DTW, Rack, and Bulk components were derived from the revised EIA-782 survey system, while the End-Use and Average Resale categories were derived from the predecessor EIA-782 survey system. Therefore, the DTW, Rack, and Bulk components are not consistent with the Average Resale category. Beginning January 1994, all data are from the revised EIA-782 survey system and are consistent.

Note: Motor gasoline averages and totals prior to October 1993 include leaded gasoline.

Source: Energy Information Administration Form EIA-782A, "Refiners/Gas Plant Operators' Monthly Petroleum Product Sales Report."

Table 7. U.S. Refiner Motor Gasoline Volumes by Grade and Sales Type
(Million Gallons per Day)

Year Month	Regular						Midgrade					
	Sales to End Users		Sales for Resale				Sales to End Users		Sales for Resale			
	Through Retail Outlets	Total ^a	DTW	Rack	Bulk	Total	Through Retail Outlets	Total ^a	DTW	Rack	Bulk	Total
1983	20.0	23.5	-	-	-	98.3	-	-	-	-	-	-
1984	24.3	27.8	-	-	-	106.8	-	-	-	-	-	-
1985	26.2	29.9	-	-	-	119.7	-	-	-	-	-	-
1986	30.9	34.7	-	-	-	127.0	-	-	-	-	-	-
1987	32.7	36.1	-	-	-	141.9	-	-	-	-	-	-
1988	34.2	37.3	-	-	-	153.6	-	-	-	-	-	-
1989	34.3	36.8	-	-	-	155.7	4.9	5.1	-	-	-	16.4
1990	36.7	38.8	-	-	-	174.5	7.4	7.6	-	-	-	23.1
1991	38.4	40.4	-	-	-	180.9	7.9	8.2	-	-	-	23.7
1992	36.5	38.4	-	-	-	182.2	8.9	9.2	-	-	-	27.5
1993	35.6	37.2	-	-	-	184.0	8.7	8.9	-	-	-	27.7
1994	34.3	35.9	47.7	120.3	24.3	192.3	8.5	8.7	12.8	15.7	0.2	28.7
1995	34.3	35.9	43.8	126.2	31.8	201.8	9.6	9.8	13.3	17.2	0.1	30.6
1996	37.2	38.9	46.5	131.9	35.2	213.6	9.5	9.8	12.9	16.6	NA	29.5
1997	40.5	42.4	46.2	135.7	33.9	215.8	9.7	10.0	12.1	16.3	NA	28.4
1998	41.7	43.2	44.4	138.9	37.1	220.3	10.1	10.3	11.1	16.3	NA	27.4
1999	41.6	43.0	45.6	147.5	34.5	227.6	9.9	10.1	10.5	16.1	NA	26.6
2000	43.6	45.0	47.5	159.3	32.4	239.3	8.6	8.7	8.8	14.2	-	23.0
2001												
January	41.7	42.9	44.9	148.0	26.2	219.1	8.2	8.4	7.8	12.7	-	20.5
February	44.3	45.5	47.5	154.8	28.1	230.4	8.7	8.8	8.2	13.7	-	21.9
March	45.2	46.4	47.9	158.5	30.1	236.5	8.7	8.8	8.2	13.7	-	21.9
April	45.2	46.5	48.5	165.2	30.0	243.6	8.5	8.6	8.0	13.5	-	21.5
May	46.6	47.9	48.7	167.8	34.0	250.5	8.2	8.3	7.6	13.2	-	20.8
June	48.3	49.6	48.0	173.5	36.7	258.2	8.5	8.7	7.4	13.7	-	21.1
July	45.6	46.9	45.7	171.5	39.8	257.0	8.2	8.4	7.2	13.7	-	20.9
August	46.8	48.2	47.9	174.3	39.2	261.3	8.5	8.6	7.9	13.8	-	21.6
September	45.4	46.7	46.5	162.0	34.5	243.1	8.1	8.2	7.7	12.6	-	20.4
October	44.4	45.6	47.1	165.2	32.8	245.1	7.8	8.0	7.9	13.1	-	20.9
November	43.3	44.5	46.2	161.2	28.3	235.8	7.8	7.9	7.9	12.8	-	20.7
December	43.6	44.7	47.9	156.3	35.7	239.9	8.0	8.1	8.1	12.6	-	20.6
2001	45.0	46.3	47.2	163.2	33.0	243.5	8.3	8.4	7.8	13.3	-	21.1
2002												
January	43.4	44.5	47.6	149.6	32.6	229.8	7.9	8.1	7.9	12.3	-	20.2
February	45.9	47.1	48.4	154.5	28.9	231.8	8.5	8.7	8.0	13.0	-	20.9
March	45.6	46.8	49.1	157.8	32.1	239.0	8.3	8.4	7.8	13.0	-	20.9
April	46.8	48.1	48.5	165.3	40.7	254.4	8.3	8.4	7.6	13.1	-	20.7
May	47.0	48.2	47.5	169.1	45.4	262.1	8.5	8.6	7.6	13.6	-	21.2
June	47.3	48.3	47.9	167.5	45.4	260.9	8.6	8.7	7.6	13.4	-	21.0
July	47.0	48.2	46.5	171.4	43.7	261.6	8.4	8.6	7.5	14.2	-	21.7
August	48.5	49.7	47.0	172.7	47.4	267.1	8.8	8.9	7.5	14.4	-	21.9
September	45.2	46.3	45.1	158.8	37.3	241.3	8.3	8.4	7.2	13.0	-	20.2
October	46.2	47.4	46.6	167.7	37.2	251.5	8.2	8.3	6.9	13.9	-	20.8
November	46.1	47.2	45.0	161.4	40.5	246.9	8.2	8.3	6.7	13.6	-	20.3
December	45.9	46.9	44.1	159.8	38.4	242.3	8.3	8.4	6.5	13.4	-	19.9
2002	46.2	47.4	46.9	163.0	39.2	249.2	8.3	8.5	7.4	13.4	-	20.8
2003												
January	44.2	45.3	43.7	156.5	33.7	233.9	7.8	7.9	6.3	12.7	-	18.9
February	45.4	46.7	44.6	160.1	31.0	235.7	7.5	7.6	6.2	12.8	-	19.0
March	46.0	47.2	45.5	165.2	30.9	241.5	7.3	7.4	5.7	12.2	-	17.9
April	46.3	47.6	44.5	169.6	36.7	250.7	7.4	7.5	5.7	12.5	-	18.2
May	48.8	50.2	43.5	173.9	39.3	256.7	8.0	8.2	5.5	12.9	-	18.4
June	49.1	50.3	44.5	176.1	46.8	267.4	8.1	8.2	5.6	13.3	-	18.9
July	49.2	50.4	44.3	179.6	44.4	268.3	8.2	8.4	5.7	13.9	-	19.5
August	49.7	51.0	45.4	183.1	47.6	276.1	8.0	8.2	5.6	13.7	-	19.3
September	47.8	49.1	41.5	174.8	46.8	263.1	7.5	7.7	5.0	13.1	-	18.1
October	47.8	49.2	42.1	176.1	43.9	262.1	7.7	7.9	5.1	13.5	-	18.6
November	46.8	48.0	41.1	167.7	40.8	249.6	7.7	8.1	5.1	12.9	-	18.0
December	46.9	47.9	41.3	173.2	38.6	253.1	7.8	7.9	5.1	13.1	-	18.2
2003	47.3	48.6	43.5	171.4	40.1	255.0	7.8	7.9	5.5	13.1	-	18.6

See footnotes at end of table.

Table 7. U.S. Refiner Motor Gasoline Volumes by Grade and Sales Type

(Million Gallons per Day) — Continued

Year Month	Premium						All Grades					
	Sales to End Users		Sales for Resale				Sales to End Users		Sales for Resale			
	Through Retail Outlets	Total ^a	DTW	Rack	Bulk	Total	Through Retail Outlets	Total ^a	DTW	Rack	Bulk	Total
1983	5.0	6.2	-	-	-	28.7	42.3	51.1	-	-	-	242.5
1984	8.5	9.2	-	-	-	33.7	50.3	57.6	-	-	-	246.3
1985	9.2	10.0	-	-	-	38.0	50.5	57.5	-	-	-	256.9
1986	9.0	9.8	-	-	-	45.1	54.2	61.2	-	-	-	257.2
1987	11.2	11.6	-	-	-	53.0	55.7	61.0	-	-	-	257.2
1988	13.8	14.5	-	-	-	62.4	56.7	61.0	-	-	-	263.7
1989	13.5	14.2	-	-	-	60.8	57.5	61.2	-	-	-	260.7
1990	11.2	11.7	-	-	-	53.7	57.4	60.3	-	-	-	264.8
1991	10.5	10.9	-	-	-	48.3	58.4	61.2	-	-	-	261.3
1992	10.3	10.7	-	-	-	51.7	56.4	59.0	-	-	-	265.4
1993	10.3	10.6	-	-	-	52.8	54.9	57.2	-	-	-	266.9
1994	10.0	10.3	22.6	29.9	3.2	55.7	52.8	55.0	83.1	165.9	27.7	276.7
1995	9.8	10.2	20.8	31.5	4.2	56.4	53.7	55.9	77.9	174.8	36.0	288.8
1996	8.4	8.8	18.2	28.3	4.1	50.5	55.1	57.5	77.5	176.8	39.3	293.6
1997	8.4	8.8	16.9	27.6	4.0	48.5	58.7	61.1	75.1	179.6	38.0	292.7
1998	9.6	9.9	17.4	30.9	4.3	52.7	61.4	63.3	73.0	186.1	41.4	300.4
1999	8.7	8.9	16.1	31.0	5.7	52.7	60.2	62.0	72.2	194.6	40.2	306.9
2000	6.9	7.1	13.0	24.4	4.7	42.1	59.1	60.9	69.4	197.9	37.1	304.4
2001												
January	6.7	6.9	12.2	22.8	3.5	38.4	56.6	58.1	65.0	183.5	29.6	278.1
February	7.2	7.4	12.8	23.5	3.4	39.7	60.2	61.7	68.6	192.1	31.4	292.1
March	7.4	7.6	13.0	24.8	3.8	41.6	61.3	62.9	69.1	197.0	33.8	300.0
April	6.9	7.1	12.5	23.8	3.0	39.4	60.6	62.3	69.0	202.5	33.0	304.5
May	6.4	6.6	11.5	22.8	3.6	37.9	61.2	62.9	67.8	203.9	37.6	309.2
June	6.9	7.1	11.5	23.9	3.6	39.1	63.8	65.4	66.9	211.2	40.3	318.4
July	7.1	7.3	11.8	26.0	4.1	41.9	60.9	62.5	64.6	211.2	44.0	319.8
August	7.3	7.5	12.4	26.4	4.0	42.9	62.6	64.4	68.1	214.5	43.2	325.8
September	7.1	7.3	11.6	23.3	3.2	38.1	60.6	62.2	65.8	198.0	37.7	301.5
October	7.1	7.3	12.4	25.3	4.5	42.2	59.3	60.9	67.4	203.5	37.3	308.2
November	7.4	7.6	12.9	26.1	3.4	42.5	58.6	60.0	67.0	200.2	31.8	298.9
December	7.7	7.9	13.4	25.8	4.4	43.6	59.3	60.8	69.4	194.7	40.1	304.1
2001	7.1	7.3	12.3	24.6	3.7	40.6	60.4	62.0	67.4	201.1	36.7	305.2
2002												
January	7.4	7.7	12.9	24.0	3.6	40.4	58.7	60.2	68.3	185.9	36.2	290.4
February	8.0	8.2	13.1	25.3	2.8	41.2	62.4	63.9	69.4	192.8	31.7	293.9
March	7.4	7.6	12.7	24.3	3.0	40.0	61.3	62.8	69.6	195.1	35.1	299.9
April	7.1	7.4	12.1	23.8	4.4	40.2	62.3	64.0	68.2	202.1	45.0	315.3
May	7.4	7.7	12.3	25.7	4.2	42.2	62.9	64.5	67.5	208.4	49.6	325.5
June	7.7	7.9	12.5	25.8	4.5	42.8	63.5	64.9	68.0	206.7	49.9	324.7
July	7.5	7.8	12.3	26.9	4.2	43.3	62.9	64.6	66.2	212.5	47.9	326.6
August	7.8	8.1	12.5	27.4	3.8	43.7	65.1	66.7	67.0	214.4	51.3	332.6
September	7.4	7.6	12.1	24.9	4.1	41.2	60.9	62.4	64.4	196.8	41.4	302.7
October	7.4	7.6	12.9	25.2	4.6	42.6	61.7	63.3	66.4	206.8	41.7	314.9
November	7.5	7.7	12.6	24.4	4.9	41.8	61.8	63.3	64.2	199.4	45.4	309.0
December	7.6	7.8	12.5	24.7	5.5	42.6	61.7	63.1	63.1	197.9	43.8	304.8
2002	7.5	7.8	12.5	25.2	4.1	41.8	62.1	63.6	66.9	201.7	43.3	311.8
2003												
January	6.9	7.0	11.8	22.9	4.2	38.9	58.8	60.2	61.8	192.0	37.8	291.6
February	6.3	6.5	11.1	20.8	2.7	34.5	59.2	60.8	61.8	193.8	33.6	289.2
March	6.0	6.2	10.2	20.6	2.0	32.7	59.3	60.8	61.3	198.0	32.9	292.2
April	6.5	6.7	10.7	22.8	2.7	36.2	60.2	61.7	60.8	204.8	39.4	305.0
May	7.7	7.9	10.9	24.9	3.9	39.7	64.5	66.3	59.9	211.7	43.2	314.7
June	7.7	7.9	11.3	25.4	3.9	40.6	64.9	66.4	61.4	214.8	50.7	326.9
July	7.8	8.0	11.5	26.7	4.0	42.2	65.2	66.8	61.5	220.1	48.4	330.1
August	7.4	7.6	11.1	25.5	3.6	40.2	65.1	66.8	62.0	222.3	51.2	335.5
September	6.9	7.2	9.8	23.2	2.8	35.8	62.2	63.9	56.2	211.1	49.7	317.0
October	7.3	7.6	10.5	24.6	3.2	38.3	62.9	64.6	57.6	214.3	47.1	319.0
November	7.4	7.7	10.6	24.1	3.0	37.6	62.0	63.8	56.8	204.7	43.7	305.2
December	7.5	7.6	10.7	25.2	3.8	39.7	62.1	63.4	57.2	211.5	42.4	311.1
2003	7.1	7.3	10.8	23.9	3.3	38.1	62.2	63.8	59.8	208.4	43.4	311.6

Dash (-) = No data reported.

NA = Not available.

^a Includes sales through retail outlets as well as all direct sales to end users that were not made through company-operated retail outlets, e.g., sales to agricultural customers, commercial sales, and industrial sales.

Notes: Data for the 4th quarter of 1993 were derived from two separate survey systems. The DTW, Rack, and Bulk components were derived from the revised EIA-782 survey system, while the End-Use and Average Resale categories were derived from the predecessor EIA-782 survey system. Therefore, the DTW, Rack, and Bulk components are not consistent with the Average Resale category. Beginning January 1994, all data are from the revised EIA-782 survey system and are consistent.

Note: Motor gasoline averages and totals prior to October 1993 include leaded gasoline.

Note: Totals may not equal the sum of the components due to rounding.

Source: Energy Information Administration Form EIA-782A, "Refiners/Gas Plant Operators' Monthly Petroleum Product Sales Report."

Table 8. U.S. Refiner Conventional Motor Gasoline Prices by Grade and Sales Type
(Cents per Gallon Excluding Taxes)

Year Month	Regular						Midgrade					
	Sales to End Users		Sales for Resale				Sales to End Users		Sales for Resale			
	Through Retail Outlets	Average ^a	DTW	Rack	Bulk	Average	Through Retail Outlets	Average ^a	DTW	Rack	Bulk	Average
1994	68.7	68.1	63.6	54.5	50.0	55.8	78.4	77.8	69.4	NA	NA	62.7
1995	71.0	70.4	65.1	57.0	52.5	57.3	80.0	79.4	71.1	61.0	NA	63.7
1996	79.7	79.1	74.3	66.5	60.7	66.4	88.4	87.8	80.1	70.0	NA	72.6
1997	78.1	77.5	71.9	64.9	60.0	64.8	87.4	86.9	78.3	68.5	W	70.8
1998	61.1	60.6	55.1	47.3	43.9	47.3	70.4	70.0	61.3	51.1	W	53.3
1999	71.0	70.6	67.6	59.5	52.0	59.0	80.2	79.9	73.4	62.8	-	65.0
2000	104.5	104.0	99.4	91.3	84.4	90.9	113.6	113.3	105.2	94.5	-	96.4
2001												
January	100.6	100.3	95.1	90.4	83.0	89.7	109.7	109.4	102.1	94.7	-	95.9
February	99.8	99.6	94.2	88.5	83.9	88.3	109.4	109.1	101.6	93.0	-	94.3
March	95.5	95.3	91.2	84.1	79.3	84.0	105.5	105.3	98.1	88.4	-	89.9
April	110.7	110.5	104.0	101.4	91.6	100.3	119.9	119.6	110.4	105.6	-	106.3
May	122.3	121.9	115.5	110.0	96.6	108.4	130.8	130.6	120.6	112.9	-	114.2
June	109.8	109.5	105.9	89.7	83.6	90.0	120.4	120.0	111.9	92.8	-	95.7
July	92.1	91.7	89.2	76.2	70.8	76.3	103.1	102.6	96.3	80.0	-	82.5
August	96.2	95.9	89.8	88.1	75.8	86.3	105.1	104.8	95.9	90.6	-	91.4
September	104.2	104.0	98.0	91.1	80.0	89.8	113.9	113.5	103.4	93.6	-	95.2
October	82.0	81.7	79.6	67.4	63.4	67.6	92.9	92.5	87.6	71.0	-	73.4
November	69.9	69.7	66.8	58.0	54.7	58.2	79.5	79.2	75.3	62.0	-	63.9
December	64.1	64.0	58.9	55.4	52.8	55.2	73.2	72.9	66.2	59.4	-	60.4
2001	96.1	95.8	91.4	83.5	76.1	83.0	105.8	105.5	98.4	87.2	-	88.9
2002												
January	66.4	66.3	60.5	58.0	54.4	57.6	75.4	75.2	68.0	62.1	-	62.9
February	66.1	66.0	60.6	58.7	55.3	58.4	74.9	74.7	67.5	62.6	-	63.3
March	81.7	81.5	75.4	75.3	65.9	73.9	90.4	90.1	82.5	79.2	-	79.7
April	94.6	94.3	88.7	83.0	74.1	81.7	104.1	103.7	96.7	87.2	-	88.5
May	94.0	93.7	88.5	81.9	73.1	80.5	103.5	103.2	95.7	85.6	-	87.0
June	92.7	92.5	88.6	81.4	72.6	80.2	101.9	101.6	95.6	84.9	-	86.4
July	94.6	94.3	90.2	84.2	75.2	82.9	103.9	103.5	96.8	87.9	-	89.0
August	93.8	93.5	89.4	83.3	75.5	82.2	103.5	103.2	96.2	87.4	-	88.5
September	94.4	94.1	89.5	85.1	77.8	84.1	103.6	103.3	96.3	89.3	-	90.2
October	100.6	100.4	93.7	91.0	82.9	89.8	109.5	109.2	100.6	95.1	-	95.8
November	95.3	95.0	90.0	79.5	74.8	79.2	104.9	104.6	97.6	83.2	-	84.8
December	92.7	92.4	86.9	82.4	74.7	81.2	101.8	101.4	94.6	86.3	-	87.3
2002	89.3	89.1	83.6	79.1	72.3	78.2	98.5	98.1	90.6	82.9	-	83.9
2003												
January	100.8	100.6	94.3	91.3	84.4	90.3	109.6	109.3	101.5	95.3	-	96.0
February	117.1	117.0	110.8	106.6	96.9	105.4	125.8	125.9	117.5	110.4	-	111.2
March	121.5	121.1	116.1	105.5	99.4	105.3	130.9	130.3	123.1	109.3	-	110.9
April	110.0	109.6	107.9	91.7	84.6	91.5	120.0	119.6	115.1	95.4	-	97.8
May	100.9	100.6	97.8	87.9	80.4	87.2	110.4	110.0	105.2	92.0	-	93.5
June	102.1	101.9	98.5	90.8	83.5	89.8	111.2	110.9	105.1	94.8	-	96.0
July	104.3	104.0	99.6	94.8	87.1	93.7	113.6	113.3	106.6	98.9	-	99.7
August	116.5	116.1	112.5	106.4	95.9	104.7	125.6	125.1	118.3	110.2	-	111.1
September	117.1	116.5	114.8	94.8	88.0	94.5	126.7	126.1	121.3	98.8	-	101.0
October	106.5	106.1	102.7	93.3	83.8	91.9	115.9	115.5	109.4	98.0	-	99.0
November	101.7	101.4	97.5	89.5	82.7	88.5	110.9	109.5	104.0	94.4	-	95.3
December	99.5	99.2	94.2	90.2	83.4	89.1	108.5	108.3	101.0	95.3	-	95.9
2003	108.1	107.8	104.0	95.2	87.1	94.2	117.3	116.8	110.8	99.4	-	100.6

See footnotes at end of table.

Table 8. U.S. Refiner Conventional Motor Gasoline Prices by Grade and Sales Type
(Cents per Gallon Excluding Taxes) — Continued

Year Month	Premium						All Grades					
	Sales to End Users		Sales for Resale				Sales to End Users		Sales for Resale			
	Through Retail Outlets	Average ^a	DTW	Rack	Bulk	Average	Through Retail Outlets	Average ^a	DTW	Rack	Bulk	Average
1994	86.3	85.5	77.8	63.8	55.5	68.2	73.6	72.9	68.3	56.5	50.7	58.9
1995	87.7	86.8	79.0	66.5	56.8	68.4	75.3	74.6	69.3	59.0	53.0	59.8
1996	96.0	95.1	86.9	75.5	64.5	76.7	83.4	82.7	77.8	68.2	61.0	68.5
1997	95.4	94.6	85.6	74.2	64.1	75.3	81.9	81.3	75.6	66.6	60.4	66.8
1998	78.3	77.6	68.4	W	47.4	57.6	65.2	64.7	58.9	49.1	44.2	49.4
1999	87.2	86.5	80.1	67.9	55.8	68.1	74.8	74.3	71.1	61.1	52.5	60.9
2000	121.1	120.1	112.0	100.2	89.7	100.5	107.6	107.1	102.3	92.6	84.9	92.5
2001												
January	117.7	117.0	108.8	99.7	90.0	99.6	103.7	103.4	98.2	91.8	83.9	91.4
February	117.9	117.2	108.6	98.5	89.1	98.7	103.1	102.8	97.6	90.0	84.5	90.0
March	113.9	113.4	105.4	94.2	88.9	95.0	98.9	98.7	94.4	85.7	80.3	85.8
April	127.8	127.1	116.5	111.3	107.4	111.7	113.7	113.4	106.8	102.8	92.9	102.0
May	138.3	137.5	126.9	118.6	104.2	117.8	124.9	124.5	117.8	111.1	97.4	109.8
June	128.4	127.8	118.8	99.1	87.5	100.2	113.0	112.6	108.6	90.9	84.0	91.5
July	111.2	110.6	103.7	86.3	75.3	86.9	95.6	95.1	92.4	77.7	71.2	77.9
August	113.3	112.7	102.8	96.6	84.5	96.1	99.1	98.8	92.6	89.3	76.5	87.7
September	121.4	120.8	109.8	99.5	85.6	99.5	107.3	107.0	100.5	92.2	80.4	91.2
October	101.3	100.7	94.0	76.9	64.6	77.0	85.5	85.1	82.9	68.7	63.5	69.2
November	87.9	87.4	81.9	67.5	54.6	67.8	73.2	73.0	70.4	59.5	54.7	59.8
December	81.5	81.1	73.0	65.1	54.4	64.5	67.4	67.2	62.1	56.9	53.0	56.7
2001	112.9	112.3	104.2	92.2	80.6	92.3	99.2	98.9	94.3	84.8	76.5	84.5
2002												
January	83.1	82.7	74.7	68.0	59.0	67.7	69.5	69.4	63.8	59.5	54.8	59.2
February	82.9	82.5	74.3	68.4	57.9	68.1	69.2	69.1	63.7	60.2	55.6	59.9
March	98.1	97.5	89.1	84.8	77.4	84.6	84.6	84.4	78.4	76.7	66.9	75.5
April	112.8	112.1	103.8	93.3	84.7	93.3	97.7	97.4	91.9	84.4	75.0	83.4
May	112.1	111.4	103.3	91.9	80.5	91.8	97.2	96.8	91.7	83.3	73.7	82.2
June	110.6	110.1	103.2	91.3	77.6	90.7	95.8	95.6	91.7	82.8	73.1	81.7
July	112.3	111.6	104.3	94.2	84.1	94.2	97.7	97.4	93.3	85.7	75.9	84.6
August	111.9	111.2	103.7	93.8	82.2	93.7	97.0	96.7	92.5	84.9	76.0	83.9
September	112.1	111.5	103.9	95.5	85.1	95.1	97.5	97.2	92.6	86.7	78.5	85.8
October	117.6	117.0	107.8	100.9	88.8	99.9	103.6	103.2	96.7	92.5	83.5	91.4
November	113.5	112.8	104.7	89.4	79.0	89.3	98.5	98.1	93.3	80.9	75.2	80.7
December	110.5	109.8	101.8	92.6	79.3	91.3	95.8	95.4	90.2	83.9	75.2	82.8
2002	106.4	105.8	97.8	88.9	78.8	88.6	92.4	92.1	86.7	80.6	72.9	79.8
2003												
January	117.9	117.4	108.6	101.7	89.3	100.7	103.7	103.4	97.3	92.7	84.9	91.8
February	133.7	133.6	124.4	116.5	100.8	115.8	119.7	119.6	113.5	107.9	97.2	106.8
March	139.2	138.4	130.3	115.3	103.8	116.2	124.2	123.8	118.8	106.7	99.6	106.6
April	129.0	128.2	122.2	101.6	92.3	103.0	113.0	112.6	110.7	93.0	85.0	93.0
May	118.7	118.0	111.9	97.9	85.9	97.8	103.9	103.5	100.7	89.3	80.9	88.7
June	119.5	119.0	112.6	100.9	91.2	100.9	105.0	104.7	101.3	92.2	84.0	91.3
July	122.0	121.3	113.9	105.2	91.8	104.5	107.2	106.9	102.4	96.3	87.5	95.2
August	133.3	132.3	125.8	116.5	102.8	116.0	119.2	118.7	115.0	107.7	96.3	106.2
September	134.8	133.5	128.6	105.0	96.9	106.4	119.9	119.2	117.4	96.2	88.4	96.0
October	123.7	122.8	116.7	103.4	92.9	103.5	109.3	108.8	105.4	94.7	84.3	93.4
November	119.1	118.3	111.7	99.9	89.2	99.7	104.5	104.1	100.2	91.0	83.1	90.0
December	116.8	116.2	108.5	100.7	87.4	99.4	102.2	102.0	97.0	91.8	83.8	90.6
2003	125.3	124.5	117.8	105.1	92.5	105.0	110.9	110.5	106.7	96.5	87.4	95.7

Dash (-) = No data reported.

NA = Not available.

W = Withheld to avoid disclosure of individual company data.

^a Includes sales through retail outlets as well as all direct sales to end users that were not made through company-operated retail outlets, e.g., sales to agricultural customers, commercial sales, and industrial sales.

Notes: The 4th quarter of 1993 was a transitional period between the predecessor EIA-782 survey system and the revised EIA-782 survey system. The revised survey system contains additional product and sales categories, which may not be consistent with categories derived from the predecessor survey system. Beginning January 1994 all data are from the revised survey system and are consistent.

Source: Energy Information Administration Form EIA-782A, "Refiners'/Gas Plant Operators' Monthly Petroleum Product Sales Report."

Table 9. U.S. Refiner Conventional Motor Gasoline Volumes by Grade and Sales Type
(Million Gallons per Day)

Year Month	Regular						Midgrade					
	Sales to End Users		Sales for Resale				Sales to End Users		Sales for Resale			
	Through Retail Outlets	Total ^a	DTW	Rack	Bulk	Total	Through Retail Outlets	Total ^a	DTW	Rack	Bulk	Total
1994	29.7	31.2	36.1	113.5	22.8	172.4	7.6	7.8	10.1	14.6	0.1	24.8
1995	24.0	25.3	19.4	105.1	26.0	150.5	6.0	6.3	5.1	13.6	0.1	18.7
1996	24.1	25.4	17.8	108.5	27.1	153.4	5.7	5.9	4.4	12.9	NA	17.3
1997	25.0	26.4	16.4	110.9	26.4	153.7	5.7	5.9	3.9	12.7	W	16.6
1998	25.4	26.6	13.7	112.0	28.8	154.5	6.0	6.1	3.4	12.5	W	15.8
1999	25.0	26.0	13.4	117.4	24.9	155.8	5.9	6.0	3.1	12.2	-	15.3
2000	26.0	27.1	12.8	125.7	23.9	162.4	4.9	5.0	2.3	10.8	-	13.1
2001												
January	23.9	24.6	11.2	114.5	19.7	145.4	4.4	4.5	1.9	9.5	-	11.4
February	25.5	26.3	11.7	120.4	20.4	152.5	4.7	4.8	2.0	10.5	-	12.5
March	26.7	27.5	12.1	125.3	21.7	159.2	4.9	5.0	2.0	10.7	-	12.7
April	27.0	27.8	12.8	132.0	22.9	167.7	4.8	4.9	2.0	10.5	-	12.6
May	28.2	29.1	13.0	133.2	25.1	171.3	4.7	4.8	2.0	10.2	-	12.2
June	29.1	30.0	12.7	137.3	24.9	175.0	4.9	5.0	1.9	10.6	-	12.5
July	27.8	28.6	12.4	135.5	27.0	174.9	4.8	4.9	1.9	10.4	-	12.3
August	28.4	29.3	13.3	138.4	28.8	180.5	4.9	5.0	2.0	10.6	-	12.6
September	27.1	27.9	12.0	128.2	26.7	166.9	4.7	4.8	1.8	9.6	-	11.4
October	26.1	26.9	11.2	129.6	22.9	163.6	4.4	4.4	1.7	10.0	-	11.7
November	24.7	25.5	10.7	125.3	20.4	156.4	4.2	4.3	1.6	9.7	-	11.3
December	24.7	25.4	11.2	121.5	27.3	160.0	4.3	4.4	1.6	9.6	-	11.2
2001	26.6	27.4	12.0	128.5	24.0	164.5	4.6	4.7	1.9	10.2	-	12.0
2002												
January	24.6	25.4	11.0	116.3	25.2	152.6	4.3	4.4	1.6	9.5	-	11.1
February	26.4	27.2	11.4	120.6	22.2	154.2	4.7	4.8	1.6	10.1	-	11.7
March	27.0	27.9	11.9	124.0	23.8	159.7	4.7	4.8	1.6	10.2	-	11.8
April	28.4	29.2	12.3	130.4	32.9	175.6	4.8	4.9	1.6	10.2	-	11.9
May	28.2	29.1	12.2	134.2	37.0	183.4	4.9	5.0	1.7	10.5	-	12.1
June	28.5	29.2	12.1	133.3	36.1	181.4	5.0	5.0	1.6	10.3	-	12.0
July	28.4	29.3	11.8	136.4	34.9	183.1	4.9	5.0	1.6	10.9	-	12.6
August	29.2	30.1	12.1	136.7	36.2	185.1	5.1	5.2	1.7	11.1	-	12.8
September	26.7	27.5	10.9	124.7	28.7	164.3	4.7	4.8	1.5	10.0	-	11.5
October	26.8	27.5	10.7	130.5	29.2	170.5	4.5	4.6	1.5	10.7	-	12.2
November	26.5	27.2	9.9	124.3	32.8	167.0	4.5	4.6	1.4	10.5	-	11.9
December	26.1	26.8	9.8	122.6	32.1	164.5	4.5	4.6	1.3	10.3	-	11.6
2002	27.2	28.0	11.3	127.9	31.0	170.2	4.7	4.8	1.6	10.4	-	11.9
2003												
January	25.2	25.9	9.9	118.4	26.0	154.3	4.3	4.4	1.3	9.6	-	10.9
February	26.0	26.9	10.3	121.8	24.4	156.5	4.1	4.2	1.3	9.8	-	11.1
March	27.0	27.7	10.6	126.5	23.7	160.8	4.2	4.3	1.2	9.4	-	10.7
April	27.8	28.5	11.1	130.6	30.3	172.0	4.4	4.4	1.3	9.7	-	11.0
May	29.0	30.0	11.0	133.8	31.2	176.0	4.6	4.8	1.3	9.8	-	11.1
June	28.8	29.6	11.1	136.2	36.8	184.1	4.6	4.7	1.3	10.2	-	11.5
July	29.0	29.9	11.1	139.5	34.3	184.9	4.7	4.8	1.3	10.6	-	11.9
August	29.2	30.2	11.3	141.5	37.2	190.0	4.6	4.7	1.3	10.5	-	11.9
September	27.9	28.9	9.8	133.0	37.6	180.3	4.3	4.4	1.1	10.2	-	11.3
October	27.1	28.1	9.4	134.1	37.1	180.6	4.2	4.3	1.0	10.5	-	11.5
November	26.2	27.1	8.8	126.5	36.3	171.6	4.1	4.4	1.0	10.0	-	11.0
December	26.1	26.9	8.9	130.6	34.1	173.6	4.1	4.1	1.0	9.9	-	10.9
2003	27.5	28.3	10.3	131.1	32.4	173.8	4.3	4.4	1.2	10.0	-	11.2

See footnotes at end of table.

Table 9. U.S. Refiner Conventional Motor Gasoline Volumes by Grade and Sales Type
(Million Gallons per Day) — Continued

Year Month	Premium						All Grades					
	Sales to End Users		Sales for Resale				Sales to End Users		Sales for Resale			
	Through Retail Outlets	Total ^a	DTW	Rack	Bulk	Total	Through Retail Outlets	Total ^a	DTW	Rack	Bulk	Total
1994	8.5	8.9	16.5	28.0	2.8	47.2	45.8	47.9	62.7	156.0	25.8	244.5
1995	6.2	6.4	7.7	25.1	2.9	35.6	36.2	38.0	32.1	143.8	28.9	204.8
1996	4.9	5.1	5.8	22.5	2.5	30.8	34.7	36.5	28.1	143.8	29.6	201.5
1997	4.8	5.0	5.1	21.9	2.5	29.5	35.4	37.2	25.4	145.6	28.9	199.8
1998	5.5	5.7	4.7	W	2.7	31.9	36.9	38.5	21.8	148.9	31.5	202.2
1999	5.0	5.2	4.3	24.1	3.8	32.2	35.9	37.2	20.8	153.7	28.7	203.3
2000	3.7	3.9	3.1	18.6	2.8	24.5	34.7	35.9	18.2	155.1	26.7	200.0
2001												
January	3.3	3.5	2.6	17.1	2.7	22.4	31.6	32.6	15.8	141.1	22.4	179.2
February	3.6	3.8	2.8	17.8	2.5	23.1	33.9	34.9	16.4	148.7	23.0	188.1
March	3.9	4.1	2.9	19.1	2.5	24.5	35.6	36.6	17.0	155.2	24.2	196.4
April	3.6	3.8	2.9	18.4	1.9	23.2	35.5	36.5	17.7	160.9	24.8	203.4
May	3.4	3.6	2.7	17.6	2.9	23.2	36.4	37.5	17.7	161.0	28.0	206.7
June	3.7	3.8	2.7	18.4	2.5	23.6	37.7	38.8	17.4	166.3	27.4	211.1
July	3.9	4.0	2.8	20.1	2.9	25.8	36.4	37.4	17.1	166.0	29.9	213.0
August	3.9	4.0	3.0	20.3	2.7	26.0	37.2	38.3	18.3	169.4	31.5	219.1
September	3.7	3.8	2.7	17.7	2.0	22.3	35.4	36.5	16.4	155.4	28.6	200.5
October	3.7	3.8	2.6	19.2	3.4	25.2	34.1	35.2	15.5	158.8	26.3	200.5
November	3.8	3.9	2.7	19.7	2.4	24.7	32.7	33.6	14.9	154.7	22.9	192.5
December	3.9	4.0	2.8	19.4	3.4	25.5	32.8	33.8	15.6	150.4	30.8	196.7
2001	3.7	3.8	2.8	18.7	2.7	24.1	35.0	36.0	16.7	157.4	26.7	200.7
2002												
January	3.7	3.9	2.6	18.0	2.7	23.4	32.6	33.6	15.3	143.9	27.9	187.1
February	4.1	4.3	2.8	19.2	2.1	24.1	35.2	36.2	15.8	149.9	24.3	190.0
March	3.9	4.0	2.7	18.7	2.1	23.6	35.7	36.7	16.2	152.9	26.0	195.0
April	3.8	3.9	2.6	18.2	3.1	24.0	36.9	38.1	16.5	158.9	36.0	211.4
May	3.9	4.0	2.7	19.7	3.0	25.5	37.0	38.1	16.6	164.4	40.1	221.1
June	4.0	4.1	2.7	20.0	3.5	26.2	37.5	38.4	16.5	163.6	39.6	219.6
July	3.9	4.1	2.7	20.8	2.8	26.3	37.2	38.3	16.2	168.2	37.7	222.0
August	4.1	4.3	2.8	21.0	2.8	26.7	38.4	39.5	16.6	168.9	39.0	224.5
September	3.8	3.9	2.5	18.9	3.0	24.4	35.3	36.3	14.9	153.6	31.7	200.2
October	3.6	3.7	2.4	18.6	3.4	24.4	34.9	35.9	14.7	159.8	32.6	207.1
November	3.6	3.8	2.3	18.0	3.5	23.8	34.7	35.6	13.6	152.8	36.3	202.7
December	3.6	3.8	2.3	18.1	3.9	24.3	34.2	35.1	13.4	151.0	36.0	200.4
2002	3.8	4.0	2.6	19.1	3.0	24.7	35.8	36.8	15.5	157.4	34.0	206.9
2003												
January	3.3	3.4	2.2	16.5	3.0	21.7	32.7	33.6	13.3	144.5	29.1	186.9
February	3.0	3.1	2.1	15.0	1.9	19.0	33.0	34.2	13.7	146.7	26.2	186.6
March	3.0	3.1	1.9	15.0	1.1	18.1	34.1	35.1	13.8	151.0	24.9	189.6
April	3.3	3.4	2.2	16.9	1.7	20.8	35.4	36.4	14.6	157.2	32.0	203.8
May	3.8	3.9	2.3	18.4	2.9	23.6	37.5	38.7	14.6	162.0	34.1	210.6
June	3.7	3.8	2.3	18.9	2.8	23.9	37.1	38.2	14.7	165.2	39.6	219.5
July	3.7	3.9	2.3	19.9	2.9	25.1	37.3	38.5	14.8	170.0	37.1	222.0
August	3.5	3.6	2.3	18.9	2.4	23.6	37.2	38.5	14.9	170.9	39.7	225.4
September	3.3	3.4	1.8	17.0	1.8	20.6	35.5	36.8	12.7	160.1	39.4	212.2
October	3.3	3.5	1.8	18.0	2.0	21.9	34.6	35.9	12.3	162.6	39.1	214.0
November	3.3	3.4	1.8	17.3	2.3	21.3	33.5	34.9	11.6	153.7	38.6	203.9
December	3.3	3.4	1.8	18.1	3.3	23.3	33.5	34.5	11.8	158.7	37.4	207.8
2003	3.4	3.5	2.1	17.5	2.4	21.9	35.1	36.3	13.6	158.6	34.8	207.0

Dash (-) = No data reported.

NA = Not available.

W = Withheld to avoid disclosure of individual company data.

^a Includes sales through retail outlets as well as all direct sales to end users that were not made through company-operated retail outlets, e.g., sales to agricultural customers, commercial sales, and industrial sales.

Notes: The 4th quarter of 1993 was a transitional period between the predecessor EIA-782 survey system and the revised EIA-782 survey system. The revised survey system contains additional product and sales categories, which may not be consistent with categories derived from the predecessor survey system. Beginning January 1994 all data are from the revised survey system and are consistent.

Note: Totals may not equal the sum of the components due to rounding.

Source: Energy Information Administration Form EIA-782A, "Refiners'/Gas Plant Operators' Monthly Petroleum Product Sales Report."

Table 10. U.S. Refiner Oxygenated Motor Gasoline Prices by Grade and Sales Type
(Cents per Gallon Excluding Taxes)

Year Month	Regular						Midgrade					
	Sales to End Users		Sales for Resale				Sales to End Users		Sales for Resale			
	Through Retail Outlets	Average ^a	DTW	Rack	Bulk	Average	Through Retail Outlets	Average ^a	DTW	Rack	Bulk	Average
1994	74.3	73.9	66.7	58.6	52.7	63.2	84.3	83.8	72.7	62.2	W	69.6
1995	76.7	76.5	70.9	63.0	59.2	66.5	83.4	83.3	75.0	65.9	-	71.3
1996	87.0	86.7	78.4	71.8	W	74.6	94.0	93.9	83.2	73.8	-	79.3
1997	88.6	88.4	81.6	72.5	-	75.8	98.0	98.0	86.6	75.0	-	80.1
1998	68.8	68.7	61.5	54.5	-	57.1	78.3	78.3	68.1	56.1	-	60.2
1999	78.9	78.8	75.0	65.2	-	68.9	87.4	87.3	78.3	66.3	-	70.0
2000	111.1	111.0	108.0	97.6	-	101.4	119.5	119.5	113.7	98.3	-	102.5
2001												
January	110.3	110.2	101.9	98.0	-	99.3	118.2	118.2	110.2	101.7	-	103.9
February	110.2	110.2	102.2	97.8	-	99.3	119.0	119.0	110.5	99.2	-	102.5
March	104.5	104.5	102.0	92.2	-	96.0	112.6	112.6	108.9	93.2	-	97.8
April	118.6	118.6	105.1	111.0	-	108.9	128.9	128.9	117.2	112.2	-	113.4
May	134.0	133.9	111.5	127.3	-	122.2	146.2	146.2	129.5	127.9	-	128.2
June	117.4	117.4	110.0	100.1	-	103.2	130.9	130.9	122.6	99.9	-	103.9
July	101.5	101.4	100.0	86.1	-	90.5	112.2	112.2	108.6	87.2	-	90.6
August	116.4	116.3	99.3	106.7	-	104.2	123.8	123.7	111.1	107.5	-	108.2
September	121.9	121.9	109.0	106.0	-	107.0	129.6	129.6	116.5	108.2	-	110.0
October	94.4	94.3	95.7	78.5	-	84.4	106.0	105.9	98.2	78.7	-	83.5
November	84.2	84.3	81.5	67.8	-	72.2	91.0	91.0	84.1	68.1	-	72.1
December	72.6	72.7	65.8	61.3	-	62.8	79.6	79.6	70.4	62.1	-	64.2
2001	102.7	102.7	96.8	91.5	-	93.3	109.6	109.5	104.3	93.7	-	96.2
2002												
January	74.4	74.5	65.7	63.8	-	64.5	83.1	83.1	72.3	65.0	-	67.0
February	73.6	73.7	65.7	65.3	-	65.5	82.8	82.8	73.1	65.5	-	67.5
March	87.6	87.5	75.7	82.8	-	80.0	97.6	97.6	83.5	83.6	-	83.6
April	100.5	100.4	91.5	88.2	-	89.4	108.9	108.9	99.7	89.0	-	91.0
May	98.2	98.1	91.3	85.4	-	87.2	107.0	107.0	101.0	86.0	-	88.2
June	97.5	97.4	92.9	85.3	-	87.7	105.4	105.3	101.3	86.1	-	88.4
July	104.4	104.3	95.3	93.3	-	93.9	113.8	113.7	106.0	93.5	-	95.1
August	103.6	103.6	94.0	93.1	-	93.4	114.1	114.0	106.3	93.8	-	95.6
September	100.0	99.9	89.5	93.2	-	91.9	110.7	110.7	100.0	94.1	-	95.2
October	104.1	104.0	86.8	99.5	-	94.8	117.4	117.3	97.6	100.5	-	99.8
November	99.3	99.2	86.4	86.9	-	86.7	112.0	112.0	95.6	86.7	-	88.8
December	95.5	95.5	82.6	86.9	-	85.4	106.2	106.2	91.3	87.6	-	88.5
2002	93.3	93.3	83.2	84.8	-	84.3	103.2	103.1	91.3	86.5	-	87.5
2003												
January	102.8	102.8	89.0	92.8	-	91.5	114.4	114.3	98.4	93.7	-	94.8
February	121.6	121.6	113.5	110.8	-	111.7	129.9	129.8	120.5	111.2	-	113.4
March	128.9	128.8	133.8	110.7	-	119.1	134.2	134.2	139.7	110.8	-	116.7
April	113.0	112.9	120.3	97.6	-	104.5	117.5	117.5	124.5	98.9	-	102.5
May	108.4	108.3	104.9	96.7	-	99.0	115.2	115.2	111.3	97.7	-	99.2
June	109.5	109.4	103.7	96.9	-	98.7	116.4	116.4	110.8	98.4	-	99.8
July	112.0	111.9	103.7	101.8	-	102.3	116.6	116.6	111.9	102.9	-	103.9
August	127.1	127.0	119.1	114.1	-	115.6	131.9	131.8	125.9	115.2	-	116.5
September	123.0	122.9	124.4	101.7	-	108.8	130.5	130.4	128.5	102.9	-	106.8
October	115.8	115.8	108.0	101.4	-	103.4	124.4	124.4	115.3	103.4	-	105.4
November	109.9	109.9	102.8	95.5	-	97.7	118.8	118.8	110.6	97.2	-	99.8
December	106.2	106.2	96.8	95.7	-	96.0	114.7	114.7	105.3	97.5	-	98.9
2003	114.1	114.1	109.4	100.9	-	103.5	121.4	121.4	115.8	102.3	-	104.5

See footnotes at end of table.

Table 10. U.S. Refiner Oxygenated Motor Gasoline Prices by Grade and Sales Type
(Cents per Gallon Excluding Taxes) — Continued

Year Month	Premium						All Grades					
	Sales to End Users		Sales for Resale				Sales to End Users		Sales for Resale			
	Through Retail Outlets	Average ^a	DTW	Rack	Bulk	Average	Through Retail Outlets	Average ^a	DTW	Rack	Bulk	Average
1994	92.9	92.4	79.9	67.5	56.7	76.5	79.3	78.8	71.5	60.7	53.5	67.5
1995	94.6	94.3	84.7	72.4	W	79.1	80.4	80.2	74.2	64.7	59.5	69.1
1996	103.7	103.5	90.7	80.0	58.3	85.5	90.2	90.0	81.1	73.1	W	76.8
1997	107.3	107.1	95.1	80.5	-	86.4	91.8	91.6	84.0	73.6	-	77.5
1998	87.0	87.0	75.0	61.7	-	67.6	72.0	71.9	64.3	55.5	-	58.7
1999	95.3	95.3	85.2	72.8	-	78.3	81.6	81.6	76.7	66.1	-	70.1
2000	129.6	129.3	121.6	105.1	-	112.6	113.6	113.6	110.0	98.2	-	102.5
2001												
January	130.2	129.9	117.1	104.8	-	109.3	113.2	113.2	104.3	99.1	-	100.8
February	130.8	130.3	117.3	105.8	-	110.6	113.3	113.2	104.7	98.6	-	100.7
March	122.9	122.4	117.3	100.4	-	109.0	106.7	106.7	104.4	92.9	-	97.4
April	138.7	136.9	122.6	117.7	-	120.2	120.9	120.8	107.9	111.6	-	110.3
May	155.9	154.1	130.8	134.4	-	132.7	136.6	136.5	114.8	127.7	-	123.7
June	139.5	139.5	128.3	107.4	-	116.8	120.3	120.3	112.7	100.5	-	104.1
July	122.3	122.3	117.4	93.2	-	103.7	104.2	104.2	102.5	86.7	-	91.5
August	134.6	134.6	116.8	111.0	-	113.7	118.5	118.5	102.1	107.1	-	105.4
September	139.3	139.3	123.8	112.9	-	118.2	124.1	124.0	111.1	106.7	-	108.3
October	116.2	116.2	107.4	88.2	-	96.0	97.8	97.8	97.3	79.4	-	85.4
November	102.4	102.4	93.8	77.0	-	83.2	86.9	86.9	83.3	68.7	-	73.4
December	90.9	91.0	78.9	70.5	-	73.7	75.3	75.4	67.8	62.4	-	64.2
2001	120.2	120.1	110.8	95.7	-	102.0	105.0	105.0	99.0	92.1	-	94.4
2002												
January	94.5	94.5	79.8	73.3	-	75.9	77.4	77.5	68.0	64.9	-	66.0
February	93.6	93.6	80.6	74.8	-	77.2	76.8	76.8	68.1	66.3	-	66.9
March	105.7	105.7	91.3	90.3	-	90.8	90.0	90.0	78.3	83.5	-	81.5
April	118.2	118.2	107.2	96.4	-	101.6	102.7	102.6	93.8	88.8	-	90.5
May	116.6	116.6	108.3	92.4	-	99.1	100.6	100.5	93.8	85.9	-	88.2
June	116.0	116.0	109.4	92.0	-	99.2	99.8	99.7	95.3	85.9	-	88.6
July	122.8	122.8	112.1	99.8	-	104.5	106.8	106.8	97.8	93.7	-	94.8
August	122.7	122.7	111.7	99.9	-	104.8	106.2	106.2	96.8	93.7	-	94.6
September	119.1	119.1	106.0	101.2	-	103.4	102.7	102.7	92.3	93.9	-	93.4
October	124.1	124.1	102.8	107.2	-	105.2	107.6	107.6	89.8	100.3	-	96.5
November	120.3	120.3	102.0	97.1	-	99.1	103.0	103.0	89.1	87.8	-	88.2
December	115.7	115.7	98.2	96.2	-	97.0	98.9	98.9	85.3	87.9	-	87.0
2002	112.3	112.2	98.4	92.2	-	94.9	96.2	96.1	85.7	85.7	-	85.7
2003												
January	124.4	124.4	104.6	102.5	-	103.4	106.5	106.4	91.7	93.8	-	93.1
February	140.5	140.5	128.1	119.2	-	123.0	124.2	124.2	115.7	111.5	-	112.9
March	147.6	147.6	149.2	119.7	-	133.1	130.8	130.7	135.7	111.3	-	119.8
April	131.5	131.5	136.2	104.1	-	115.5	114.8	114.8	122.1	98.2	-	105.1
May	126.9	126.8	123.3	104.3	-	111.0	110.5	110.5	107.1	97.4	-	99.8
June	129.2	129.1	119.9	104.5	-	110.4	111.9	111.8	105.8	97.6	-	99.7
July	130.2	130.2	119.9	109.4	-	113.4	114.1	114.1	105.9	102.4	-	103.3
August	144.2	144.2	134.9	121.7	-	126.8	129.2	129.1	121.1	114.7	-	116.5
September	142.7	142.7	138.9	109.4	-	121.2	125.5	125.4	126.2	102.4	-	109.5
October	135.4	135.4	123.8	110.3	-	115.7	118.8	118.7	110.5	102.4	-	104.8
November	129.8	129.6	119.1	104.8	-	110.0	113.1	113.0	105.4	96.5	-	99.1
December	124.4	124.4	112.9	104.1	-	107.2	109.2	109.2	99.4	96.7	-	97.5
2003	132.8	132.8	124.0	108.7	-	114.6	116.7	116.6	111.5	101.7	-	104.6

Dash (-) = No data reported.

W = Withheld to avoid disclosure of individual company data.

^a Includes sales through retail outlets as well as all direct sales to end users that were not made through company-operated retail outlets, e.g., sales to agricultural customers, commercial sales, and industrial sales.

Notes: The 4th quarter of 1993 was a transitional period between the predecessor EIA-782 survey system and the revised EIA-782 survey system. The revised survey system contains additional product and sales categories, which may not be consistent with categories derived from the predecessor survey system. Beginning January 1994 all data are from the revised survey system and are consistent.

Source: Energy Information Administration Form EIA-782A, "Refiners'/Gas Plant Operators' Monthly Petroleum Product Sales Report."

Table 11. U.S. Refiner Oxygenated Motor Gasoline Volumes by Grade and Sales Type
(Million Gallons per Day)

Year Month	Regular						Midgrade					
	Sales to End Users		Sales for Resale				Sales to End Users		Sales for Resale			
	Through Retail Outlets	Total ^a	DTW	Rack	Bulk	Total	Through Retail Outlets	Total ^a	DTW	Rack	Bulk	Total
1994	4.0	4.1	9.4	5.2	0.9	15.5	0.7	0.7	2.1	0.8	W	2.9
1995	2.5	2.5	3.8	W	W	8.1	0.5	0.5	0.8	0.5	-	1.3
1996	2.4	2.5	2.6	2.9	W	5.6	0.5	0.5	0.5	0.4	-	0.9
1997	2.2	2.2	1.8	3.1	-	4.9	0.4	0.4	0.3	0.4	-	0.7
1998	2.0	2.1	2.2	3.9	-	6.0	0.4	0.4	0.4	0.7	-	1.1
1999	2.1	2.1	2.4	3.9	-	6.3	0.4	0.4	0.3	0.8	-	1.2
2000	2.0	2.1	2.7	4.5	-	7.2	0.3	0.3	0.3	0.9	-	1.2
2001												
January	2.8	2.9	2.8	5.8	-	8.6	0.6	0.6	0.3	1.0	-	1.3
February	3.0	3.0	3.1	5.8	-	8.9	0.6	0.6	0.4	0.9	-	1.3
March	2.2	2.2	2.6	4.1	-	6.7	0.3	0.3	0.3	0.8	-	1.1
April	1.6	1.6	2.1	3.7	-	5.8	0.2	0.2	0.2	0.8	-	1.0
May	1.4	1.4	1.8	3.9	-	5.7	0.2	0.2	0.2	0.8	-	0.9
June	1.5	1.5	1.9	4.2	-	6.0	0.2	0.2	0.2	0.8	-	1.0
July	1.4	1.4	1.8	3.9	-	5.7	0.2	0.2	0.2	0.9	-	1.1
August	1.4	1.4	1.9	3.7	-	5.7	0.2	0.2	0.2	0.8	-	1.0
September	1.5	1.5	2.3	4.2	-	6.5	0.2	0.2	0.2	0.8	-	1.0
October	2.6	2.6	2.9	5.6	-	8.6	0.4	0.4	0.3	1.0	-	1.3
November	3.2	3.3	3.1	6.4	-	9.5	0.6	0.6	0.3	1.0	-	1.4
December	3.3	3.4	3.2	6.3	-	9.5	0.6	0.6	0.4	1.0	-	1.4
2001	2.2	2.2	2.5	4.8	-	7.3	0.3	0.3	0.3	0.9	-	1.1
2002												
January	2.9	2.9	3.2	5.8	-	9.0	0.5	0.5	0.4	0.9	-	1.3
February	2.9	2.9	3.0	5.4	-	8.4	0.5	0.5	0.3	0.9	-	1.3
March	2.1	2.1	2.7	4.1	-	6.8	0.3	0.3	0.3	0.9	-	1.2
April	1.5	1.5	2.0	3.7	-	5.8	0.2	0.2	0.2	0.8	-	1.0
May	1.5	1.5	1.8	4.0	-	5.8	0.2	0.2	0.2	0.9	-	1.1
June	1.6	1.6	1.8	4.1	-	6.0	0.2	0.2	0.2	0.9	-	1.1
July	1.6	1.6	1.8	4.5	-	6.3	0.2	0.2	0.2	1.1	-	1.3
August	1.6	1.6	1.9	4.2	-	6.0	0.2	0.2	0.2	1.0	-	1.1
September	1.7	1.8	2.3	4.3	-	6.5	0.2	0.2	0.2	1.0	-	1.2
October	2.5	2.5	3.1	5.4	-	8.5	0.4	0.4	0.3	1.1	-	1.4
November	2.8	2.8	3.1	6.0	-	9.1	0.5	0.5	0.3	1.1	-	1.4
December	2.8	2.8	3.1	5.8	-	8.9	0.5	0.5	0.3	1.1	-	1.4
2002	2.1	2.1	2.5	4.8	-	7.3	0.3	0.3	0.3	1.0	-	1.2
2003												
January	2.7	2.7	3.1	6.1	-	9.2	0.5	0.5	0.3	1.1	-	1.5
February	2.7	2.7	3.1	5.7	-	8.8	0.5	0.5	0.3	1.0	-	1.3
March	1.9	2.0	2.6	4.6	-	7.3	0.3	0.3	0.2	0.9	-	1.2
April	1.7	1.7	1.8	4.1	-	6.0	0.2	0.2	0.1	0.9	-	1.0
May	1.8	1.8	1.7	4.5	-	6.2	0.2	0.2	0.1	1.0	-	1.1
June	1.8	1.8	1.7	4.7	-	6.4	0.3	0.3	0.1	1.0	-	1.2
July	1.8	1.8	1.7	4.5	-	6.2	0.3	0.3	0.1	1.0	-	1.2
August	1.7	1.8	1.8	4.5	-	6.3	0.3	0.3	0.1	1.0	-	1.1
September	1.9	2.0	2.2	4.7	-	6.9	0.3	0.3	0.2	1.0	-	1.1
October	2.7	2.7	2.5	5.7	-	8.3	0.5	0.5	0.2	1.1	-	1.3
November	3.0	3.0	2.7	6.4	-	9.0	0.6	0.6	0.2	1.0	-	1.3
December	3.0	3.0	2.8	6.7	-	9.5	0.6	0.6	0.3	1.1	-	1.4
2003	2.2	2.2	2.3	5.2	-	7.5	0.4	0.4	0.2	1.0	-	1.2

See footnotes at end of table.

Table 11. U.S. Refiner Oxygenated Motor Gasoline Volumes by Grade and Sales Type
(Million Gallons per Day) — Continued

Year Month	Premium						All Grades					
	Sales to End Users		Sales for Resale				Sales to End Users		Sales for Resale			
	Through Retail Outlets	Total ^a	DTW	Rack	Bulk	Total	Through Retail Outlets	Total ^a	DTW	Rack	Bulk	Total
1994	1.2	1.2	5.0	1.4	0.2	6.6	5.9	6.1	16.5	7.4	1.1	25.0
1995	0.5	0.5	1.1	W	W	1.9	3.5	3.6	5.7	5.1	0.6	11.3
1996	0.4	0.4	0.6	0.5	NA	1.1	3.4	3.4	3.7	3.8	W	7.6
1997	0.3	0.3	0.3	0.4	-	0.7	2.9	2.9	2.4	3.9	-	6.3
1998	0.3	0.3	0.4	0.5	-	1.0	2.7	2.7	3.0	5.1	-	8.1
1999	0.3	0.3	0.4	0.5	-	0.9	2.7	2.8	3.2	5.3	-	8.4
2000	0.2	0.2	0.4	0.4	-	0.8	2.6	2.6	3.3	5.8	-	9.2
2001												
January	0.3	0.3	0.4	0.7	-	1.0	3.7	3.8	3.6	7.4	-	11.0
February	0.3	0.3	0.4	0.6	-	1.0	3.9	3.9	3.9	7.4	-	11.3
March	0.2	0.2	0.4	0.4	-	0.7	2.6	2.6	3.3	5.2	-	8.5
April	0.1	0.1	0.3	0.3	-	0.5	1.9	1.9	2.6	4.7	-	7.3
May	0.1	0.1	0.2	0.2	-	0.5	1.6	1.7	2.2	4.9	-	7.1
June	0.1	0.1	0.2	0.3	-	0.5	1.8	1.8	2.2	5.2	-	7.5
July	0.1	0.1	0.2	0.3	-	0.5	1.7	1.7	2.2	5.2	-	7.4
August	0.1	0.1	0.2	0.3	-	0.5	1.7	1.7	2.3	4.8	-	7.1
September	0.1	0.1	0.3	0.3	-	0.6	1.9	1.9	2.8	5.3	-	8.1
October	0.3	0.3	0.4	0.6	-	1.0	3.3	3.3	3.7	7.2	-	10.9
November	0.4	0.4	0.5	0.8	-	1.3	4.2	4.3	3.9	8.3	-	12.2
December	0.4	0.4	0.5	0.8	-	1.3	4.4	4.4	4.0	8.2	-	12.2
2001	0.2	0.2	0.3	0.5	-	0.8	2.7	2.7	3.1	6.1	-	9.2
2002												
January	0.4	0.4	0.5	0.8	-	1.2	3.7	3.7	4.0	7.5	-	11.5
February	0.4	0.4	0.5	0.7	-	1.1	3.8	3.8	3.8	7.0	-	10.8
March	0.2	0.2	0.4	0.4	-	0.8	2.5	2.5	3.4	5.4	-	8.8
April	0.1	0.1	0.3	0.3	-	0.5	1.8	1.8	2.5	4.9	-	7.3
May	0.1	0.1	0.2	0.3	-	0.5	1.9	1.9	2.2	5.2	-	7.4
June	0.2	0.2	0.2	0.3	-	0.6	1.9	1.9	2.2	5.4	-	7.6
July	0.2	0.2	0.2	0.4	-	0.6	1.9	1.9	2.2	6.0	-	8.2
August	0.2	0.2	0.2	0.3	-	0.6	2.0	2.0	2.3	5.5	-	7.7
September	0.2	0.2	0.3	0.4	-	0.7	2.1	2.2	2.8	5.6	-	8.5
October	0.3	0.3	0.5	0.6	-	1.1	3.2	3.2	4.0	7.0	-	11.0
November	0.3	0.3	0.5	0.7	-	1.2	3.6	3.6	3.9	7.9	-	11.8
December	0.3	0.3	0.5	0.7	-	1.2	3.7	3.7	3.9	7.6	-	11.5
2002	0.2	0.2	0.4	0.5	-	0.9	2.7	2.7	3.1	6.2	-	9.3
2003												
January	0.3	0.3	0.5	0.7	-	1.2	3.5	3.6	3.9	7.9	-	11.8
February	0.3	0.3	0.4	0.6	-	1.0	3.4	3.4	3.8	7.3	-	11.1
March	0.2	0.2	0.3	0.4	-	0.7	2.4	2.4	3.2	5.9	-	9.1
April	0.1	0.1	0.2	0.4	-	0.6	2.1	2.1	2.2	5.4	-	7.5
May	0.2	0.2	0.2	0.4	-	0.6	2.2	2.2	2.0	5.9	-	7.9
June	0.2	0.2	0.2	0.4	-	0.6	2.2	2.3	2.1	6.0	-	8.1
July	0.2	0.2	0.2	0.4	-	0.6	2.2	2.3	2.1	5.9	-	8.0
August	0.2	0.2	0.2	0.3	-	0.6	2.2	2.2	2.2	5.8	-	8.0
September	0.2	0.2	0.3	0.4	-	0.7	2.4	2.4	2.6	6.1	-	8.7
October	0.3	0.3	0.4	0.6	-	1.0	3.5	3.5	3.1	7.4	-	10.5
November	0.4	0.4	0.4	0.7	-	1.1	3.9	3.9	3.3	8.1	-	11.4
December	0.4	0.4	0.4	0.8	-	1.2	3.9	3.9	3.4	8.7	-	12.1
2003	0.2	0.2	0.3	0.5	-	0.8	2.8	2.9	2.8	6.7	-	9.5

Dash (-) = No data reported.

NA = Not available.

W = Withheld to avoid disclosure of individual company data.

^a Includes sales through retail outlets as well as all direct sales to end users that were not made through company-operated retail outlets, e.g., sales to agricultural customers, commercial sales, and industrial sales.

Notes: The 4th quarter of 1993 was a transitional period between the predecessor EIA-782 survey system and the revised EIA-782 survey system. The revised survey system contains additional product and sales categories, which may not be consistent with categories derived from the predecessor survey system. Beginning January 1994 all data are from the revised survey system and are consistent.

Note: Totals may not equal the sum of the components due to rounding.

Source: Energy Information Administration Form EIA-782A, "Refiners'/Gas Plant Operators' Monthly Petroleum Product Sales Report."

Table 12. U.S. Refiner Reformulated Motor Gasoline Prices by Grade and Sales Type
(Cents per Gallon Excluding Taxes)

Year Month	Regular						Midgrade					
	Sales to End Users		Sales for Resale				Sales to End Users		Sales for Resale			
	Through Retail Outlets	Average ^a	DTW	Rack	Bulk	Average	Through Retail Outlets	Average ^a	DTW	Rack	Bulk	Average
1994	76.4	75.8	72.0	56.9	54.3	63.8	87.9	87.3	77.0	62.8	W	72.8
1995	74.9	74.4	70.7	60.5	57.3	65.0	83.6	83.3	75.3	65.1	-	72.3
1996	83.4	83.0	78.8	69.8	67.7	73.8	92.4	92.1	83.7	74.1	W	80.9
1997	83.0	82.8	78.7	68.2	66.8	73.1	92.8	92.5	84.0	72.5	W	80.7
1998	66.8	66.5	61.6	50.9	48.4	55.7	76.9	76.7	67.3	55.3	W	63.8
1999	80.4	80.0	75.2	64.2	60.1	68.6	89.5	89.2	80.7	67.6	NA	76.7
2000	112.6	112.3	105.8	97.8	95.3	101.2	121.9	121.7	111.4	101.4	-	108.5
2001												
January	106.9	106.5	99.5	93.3	88.9	95.8	117.1	116.7	105.7	97.4	-	103.3
February	107.2	107.0	101.1	94.8	96.9	98.0	117.6	117.4	107.0	99.3	-	104.9
March	107.8	107.7	102.3	94.4	99.6	98.8	118.1	118.0	107.8	99.1	-	105.4
April	120.2	120.2	113.7	112.6	110.3	112.9	130.3	130.1	120.3	117.4	-	119.5
May	135.4	135.0	130.3	119.9	113.0	123.8	145.3	145.0	137.4	123.9	-	133.4
June	130.0	129.3	126.1	97.7	94.0	109.5	140.5	140.0	132.8	102.7	-	123.7
July	112.3	111.5	111.1	80.2	79.3	92.8	123.4	122.9	117.4	85.0	-	107.2
August	103.4	103.0	97.9	90.8	81.7	92.6	113.9	113.5	105.4	94.7	-	102.2
September	107.6	107.4	100.6	94.0	86.4	96.2	118.4	118.2	108.4	98.1	-	105.5
October	92.5	92.2	87.8	73.1	70.5	79.4	103.4	103.1	95.0	77.8	-	90.5
November	76.8	76.6	72.0	61.9	58.9	66.2	87.9	87.7	78.7	66.2	-	75.5
December	64.7	64.6	58.7	58.4	54.7	58.1	75.7	75.6	65.6	62.2	-	64.7
2001	105.9	105.6	100.1	89.3	85.6	93.8	116.6	116.3	106.1	94.2	-	102.7
2002												
January	67.4	67.3	62.9	61.4	58.6	61.8	77.4	77.3	70.5	65.0	-	69.2
February	71.3	71.2	67.6	63.4	62.0	65.3	81.2	81.1	75.9	67.6	-	73.9
March	87.8	87.6	83.8	79.9	75.3	81.2	97.5	97.3	92.6	84.2	-	90.5
April	101.6	101.4	97.7	87.8	82.3	91.8	112.2	112.0	106.7	92.5	-	103.0
May	101.0	100.7	96.9	87.4	80.7	91.0	111.6	111.4	105.8	91.5	-	101.9
June	100.8	100.6	97.2	87.0	79.3	90.7	111.4	111.3	106.1	91.0	-	102.1
July	100.5	100.3	97.4	88.2	80.9	91.5	111.3	111.1	106.0	92.1	-	102.1
August	100.9	100.7	98.4	87.9	81.0	91.5	111.9	111.7	107.2	92.1	-	102.8
September	100.3	100.1	97.0	88.9	82.6	91.8	111.2	111.1	105.8	93.0	-	102.4
October	100.8	100.6	96.0	92.7	84.7	93.3	111.7	111.5	104.2	96.5	-	101.9
November	101.4	101.2	98.1	85.0	80.1	90.4	112.3	112.1	105.9	88.9	-	100.9
December	97.6	97.4	94.8	86.0	81.2	89.6	109.1	108.8	102.5	89.8	-	98.8
2002	94.6	94.4	90.6	83.4	77.9	86.1	105.2	105.0	98.8	87.5	-	95.8
2003												
January	105.8	105.5	102.3	95.2	90.5	97.8	117.1	116.9	110.1	99.5	-	106.9
February	122.3	122.0	118.6	110.3	106.4	113.6	132.9	132.6	125.6	114.5	-	122.2
March	136.9	136.5	134.6	113.6	111.9	122.6	145.2	144.9	138.5	118.5	-	132.3
April	129.4	128.8	128.6	97.7	91.6	110.6	137.4	136.9	132.7	101.8	-	122.9
May	116.6	116.1	113.9	92.8	86.9	100.9	126.3	125.9	119.7	96.4	-	111.8
June	112.4	112.2	109.0	97.8	95.1	102.1	122.5	122.3	115.2	101.9	-	110.7
July	111.9	111.7	108.2	98.4	92.4	101.6	122.5	122.3	114.7	102.2	-	110.3
August	125.9	125.6	122.6	112.3	108.6	116.0	135.3	135.0	127.8	116.3	-	123.8
September	134.3	133.8	133.0	101.8	94.7	113.1	143.5	143.1	137.4	105.7	-	126.2
October	119.6	119.2	117.2	98.2	92.5	105.5	130.3	130.0	123.0	102.4	-	115.9
November	112.3	112.1	109.0	95.1	88.6	100.6	123.3	123.1	115.4	99.2	-	109.9
December	107.9	107.8	103.8	94.6	89.4	98.2	119.1	119.1	110.5	98.4	-	106.3
2003	119.6	119.2	116.8	100.6	96.2	106.9	129.3	129.0	122.4	104.7	-	116.5

See footnotes at end of table.

Table 12. U.S. Refiner Reformulated Motor Gasoline Prices by Grade and Sales Type
(Cents per Gallon Excluding Taxes) — Continued

Year Month	Premium						All Grades					
	Sales to End Users		Sales for Resale				Sales to End Users		Sales for Resale			
	Through Retail Outlets	Average ^a	DTW	Rack	Bulk	Average	Through Retail Outlets	Average ^a	DTW	Rack	Bulk	Average
1994	96.6	95.8	86.1	67.7	55.8	77.7	83.1	82.4	77.1	59.9	54.7	68.7
1995	92.9	92.4	84.1	70.4	61.6	78.5	80.8	80.3	75.6	63.2	58.2	69.6
1996	100.2	99.8	91.0	79.1	70.9	85.9	88.2	87.8	82.8	72.0	68.2	77.4
1997	100.5	100.3	91.0	77.5	68.6	85.3	87.6	87.4	82.5	70.3	67.1	76.7
1998	84.7	84.5	74.1	W	51.6	68.0	71.7	71.4	65.7	52.9	48.9	59.3
1999	96.6	96.3	87.0	71.7	63.9	79.8	84.5	84.1	78.8	65.8	60.8	71.8
2000	129.7	129.1	118.9	106.4	97.2	112.5	116.4	116.0	109.2	99.3	95.7	103.9
2001												
January	127.5	126.9	113.4	102.5	92.8	108.6	111.4	110.9	103.1	94.9	89.4	98.7
February	127.8	127.3	114.6	103.8	100.9	110.3	111.8	111.5	104.5	96.4	97.3	100.7
March	125.9	125.4	115.1	103.1	96.4	109.7	111.9	111.7	105.5	96.0	99.1	101.2
April	137.7	137.2	126.8	123.2	122.6	125.3	124.1	123.9	117.0	114.4	111.9	115.5
May	153.2	152.2	143.6	130.7	115.0	137.6	139.0	138.6	133.5	121.5	113.1	126.7
June	149.0	147.9	139.9	108.8	95.8	125.6	133.9	133.2	129.4	99.5	94.2	113.0
July	132.7	132.0	125.8	90.9	79.3	109.6	116.7	115.9	114.6	82.0	79.3	96.5
August	123.4	122.9	113.4	100.7	89.1	106.8	107.7	107.2	101.8	92.5	82.5	95.8
September	126.5	126.1	114.7	103.4	91.8	108.9	111.7	111.5	104.2	95.6	87.1	99.0
October	111.8	111.3	102.1	82.6	72.8	93.3	96.8	96.4	91.5	74.8	70.7	82.6
November	96.1	95.7	87.1	71.0	59.8	79.8	81.2	81.0	75.9	63.5	59.0	69.4
December	83.7	83.4	74.4	67.6	57.2	71.1	69.2	69.1	62.8	60.0	55.0	61.0
2001	123.9	123.4	113.3	98.3	89.0	106.5	110.0	109.6	103.4	90.9	85.9	96.6
2002												
January	85.1	84.8	77.4	70.8	62.5	74.4	71.4	71.3	66.7	63.0	59.0	64.6
February	88.4	88.1	80.9	72.8	67.9	77.6	75.2	75.1	71.2	65.1	62.6	68.2
March	104.1	103.6	96.1	89.0	81.2	92.9	91.5	91.3	87.2	81.4	75.9	83.9
April	118.5	117.8	111.1	97.9	87.2	104.7	105.4	105.1	101.2	89.4	83.0	94.8
May	119.2	118.6	110.8	96.9	84.7	104.1	105.0	104.7	100.6	89.0	81.2	94.1
June	118.6	118.0	110.6	96.1	87.5	104.2	104.9	104.6	100.9	88.5	80.1	93.9
July	118.5	117.9	110.9	98.1	87.0	104.5	104.6	104.3	101.1	89.9	81.7	94.6
August	119.5	119.1	112.6	98.0	86.6	105.7	105.1	104.9	102.2	89.7	81.5	94.7
September	119.0	118.6	111.4	98.8	86.0	105.2	104.6	104.3	100.9	90.6	83.0	94.9
October	119.1	118.7	110.8	102.4	90.7	106.5	105.0	104.8	99.9	94.3	85.5	96.3
November	120.2	119.8	112.9	95.4	82.9	104.6	105.7	105.5	102.0	86.7	80.5	93.7
December	116.4	116.0	109.9	95.7	82.0	102.5	102.0	101.7	98.8	87.6	81.4	92.6
2002	112.4	111.9	104.6	93.0	83.2	99.1	98.7	98.5	94.4	85.1	78.5	89.1
2003												
January	124.1	123.7	116.8	104.3	93.3	110.6	110.0	109.7	106.1	96.7	90.9	100.7
February	139.2	138.7	131.8	119.1	111.3	126.1	125.9	125.6	121.9	111.7	106.9	116.2
March	152.4	151.7	145.0	122.2	NA	134.6	139.9	139.4	136.8	114.9	111.9	125.1
April	145.9	145.3	139.7	106.6	100.1	124.6	132.6	132.0	131.1	99.1	92.7	113.6
May	133.9	133.4	126.7	102.1	93.1	114.8	120.5	119.9	117.0	94.2	87.6	103.8
June	129.4	129.2	121.9	107.2	104.9	115.1	116.3	116.0	112.1	99.3	96.1	104.7
July	129.5	129.2	121.5	108.0	100.9	114.9	116.0	115.7	111.5	100.0	93.2	104.4
August	141.8	141.4	134.7	122.6	125.4	129.3	129.4	129.1	125.4	113.9	110.2	118.5
September	152.0	151.4	145.5	113.1	102.9	129.5	138.0	137.5	135.7	103.4	95.5	116.3
October	138.7	138.2	131.1	108.3	97.6	119.7	123.8	123.4	120.4	99.8	93.2	108.4
November	132.0	131.7	123.2	104.5	93.1	114.4	116.8	116.5	112.4	96.6	89.2	103.5
December	127.6	127.4	118.1	103.9	92.5	111.5	112.4	112.2	107.3	96.1	89.7	100.9
2003	136.6	136.2	129.2	109.9	102.8	120.1	123.3	122.9	119.7	102.1	96.9	109.7

Dash (-) = No data reported.

NA = Not available.

W = Withheld to avoid disclosure of individual company data.

^a Includes sales through retail outlets as well as all direct sales to end users that were not made through company-operated retail outlets, e.g., sales to agricultural customers, commercial sales, and industrial sales.

Source: Energy Information Administration Form EIA-782A, "Refiners'/Gas Plant Operators' Monthly Petroleum Product Sales Report."

Table 13. U.S. Refiner Reformulated Motor Gasoline Volumes by Grade and Sales Type
(Million Gallons per Day)

Year Month	Regular						Midgrade					
	Sales to End Users		Sales for Resale				Sales to End Users		Sales for Resale			
	Through Retail Outlets	Total ^a	DTW	Rack	Bulk	Total	Through Retail Outlets	Total ^a	DTW	Rack	Bulk	Total
1994	0.6	0.6	2.1	1.6	0.6	4.3	0.2	0.2	0.7	0.3	W	1.0
1995	7.8	8.1	20.7	W	W	43.3	3.0	3.1	7.4	3.1	-	10.5
1996	10.7	11.1	26.1	20.5	8.0	54.6	3.3	3.4	7.9	3.3	W	11.3
1997	13.4	13.8	28.0	21.7	7.6	57.3	3.6	3.7	7.9	3.1	W	11.0
1998	14.3	14.5	28.6	23.0	8.3	59.9	3.7	3.8	7.4	3.1	W	10.5
1999	14.5	14.8	29.8	26.1	9.6	65.5	3.6	3.7	7.0	3.1	NA	10.2
2000	15.5	15.9	32.1	29.1	8.5	69.6	3.3	3.4	6.2	2.6	-	8.8
2001												
January	15.0	15.4	30.8	27.7	6.5	65.0	3.3	3.3	5.6	2.2	-	7.8
February	15.8	16.2	32.7	28.6	7.6	68.9	3.4	3.4	5.9	2.2	-	8.1
March	16.3	16.7	33.2	29.1	8.4	70.7	3.5	3.5	5.9	2.3	-	8.1
April	16.6	17.1	33.6	29.5	7.1	70.2	3.5	3.5	5.8	2.2	-	8.0
May	16.9	17.4	33.8	30.7	8.9	73.4	3.3	3.4	5.4	2.3	-	7.7
June	17.7	18.1	33.4	32.0	11.7	77.2	3.5	3.5	5.3	2.3	-	7.6
July	16.4	16.9	31.5	32.0	12.9	76.3	3.3	3.3	5.1	2.4	-	7.5
August	17.0	17.5	32.7	32.1	10.4	75.1	3.4	3.4	5.7	2.4	-	8.1
September	16.8	17.3	32.2	29.7	7.9	69.7	3.2	3.2	5.7	2.3	-	8.0
October	15.7	16.1	33.0	30.0	9.9	72.9	3.0	3.1	5.9	2.1	-	8.0
November	15.4	15.7	32.5	29.5	7.9	69.9	3.0	3.1	5.9	2.0	-	8.0
December	15.6	15.9	33.5	28.5	8.3	70.3	3.1	3.1	6.1	2.0	-	8.1
2001	16.3	16.7	32.7	30.0	9.0	71.7	3.3	3.3	5.7	2.2	-	7.9
2002												
January	15.9	16.2	33.4	27.5	7.4	68.3	3.1	3.2	5.9	1.9	-	7.8
February	16.6	16.9	34.0	28.6	6.7	69.2	3.3	3.4	6.0	2.0	-	7.9
March	16.5	16.9	34.5	29.7	8.3	72.5	3.3	3.3	5.9	2.0	-	7.9
April	17.0	17.4	34.2	31.1	7.8	73.1	3.3	3.4	5.8	2.0	-	7.8
May	17.2	17.6	33.5	31.0	8.4	72.9	3.4	3.4	5.8	2.2	-	8.0
June	17.2	17.5	34.0	30.1	9.4	73.5	3.4	3.4	5.8	2.1	-	7.9
July	17.0	17.4	32.8	30.5	8.8	72.2	3.3	3.4	5.7	2.2	-	7.9
August	17.6	18.0	33.0	31.8	11.2	76.0	3.5	3.5	5.6	2.3	-	7.9
September	16.7	17.1	32.0	29.9	8.6	70.5	3.3	3.4	5.5	2.0	-	7.5
October	16.9	17.4	32.8	31.8	8.0	72.5	3.2	3.2	5.1	2.1	-	7.2
November	16.8	17.2	32.0	31.0	7.7	70.8	3.2	3.2	5.0	2.0	-	7.0
December	17.0	17.3	31.2	31.5	6.2	69.0	3.2	3.3	4.9	2.0	-	6.9
2002	16.9	17.2	33.1	30.4	8.2	71.7	3.3	3.3	5.6	2.1	-	7.6
2003												
January	16.3	16.7	30.8	31.9	7.6	70.3	3.0	3.0	4.6	2.0	-	6.6
February	16.7	17.1	31.2	32.6	6.6	70.4	2.9	3.0	4.5	2.0	-	6.5
March	17.1	17.5	32.2	34.0	7.2	73.4	2.8	2.8	4.2	1.9	-	6.1
April	16.9	17.3	31.5	34.8	6.4	72.8	2.8	2.8	4.2	1.9	-	6.1
May	17.9	18.4	30.8	35.6	8.1	74.5	3.2	3.2	4.1	2.1	-	6.2
June	18.5	18.8	31.7	35.3	9.9	76.9	3.2	3.3	4.1	2.1	-	6.3
July	18.5	18.8	31.4	35.6	10.2	77.2	3.3	3.3	4.2	2.3	-	6.4
August	18.7	19.1	32.3	37.1	10.4	79.8	3.2	3.2	4.1	2.2	-	6.3
September	17.9	18.2	29.6	37.0	9.3	75.9	3.0	3.0	3.7	2.0	-	5.7
October	18.0	18.3	30.1	36.3	6.8	73.2	3.1	3.1	3.8	2.0	-	5.8
November	17.6	18.0	29.6	34.8	4.5	68.9	3.1	3.1	3.8	1.9	-	5.7
December	17.7	17.9	29.6	35.8	4.6	70.0	3.2	3.2	3.8	2.0	-	5.8
2003	17.7	18.0	30.9	35.1	7.6	73.6	3.1	3.1	4.1	2.0	-	6.1

See footnotes at end of table.

Table 13. U.S. Refiner Reformulated Motor Gasoline Volumes by Grade and Sales Type
(Million Gallons per Day) — Continued

Year Month	Premium						All Grades					
	Sales to End Users		Sales for Resale				Sales to End Users		Sales for Resale			
	Through Retail Outlets	Total ^a	DTW	Rack	Bulk	Total	Through Retail Outlets	Total ^a	DTW	Rack	Bulk	Total
1994	0.2	0.2	1.2	0.5	0.2	1.9	1.0	1.0	4.0	2.4	0.8	7.2
1995	3.1	3.2	12.0	W	W	18.9	14.0	14.4	40.1	25.9	6.6	72.6
1996	3.1	3.2	11.7	5.3	1.5	18.6	17.0	17.6	45.7	29.2	9.6	84.5
1997	3.4	3.5	11.5	5.3	1.5	18.2	20.3	21.0	47.4	30.1	9.1	86.6
1998	3.8	3.9	12.2	W	1.6	19.8	21.8	22.2	48.2	32.0	9.9	90.1
1999	3.4	3.5	11.4	6.3	1.9	19.6	21.5	22.0	48.2	35.6	11.5	95.2
2000	3.0	3.1	9.6	5.4	1.9	16.8	21.9	22.4	47.9	37.0	10.4	95.2
2001												
January	3.0	3.1	9.2	5.0	0.8	15.0	21.2	21.7	45.6	35.0	7.3	87.9
February	3.2	3.3	9.6	5.2	0.8	15.6	22.4	22.9	48.2	36.0	8.5	92.6
March	3.3	3.3	9.7	5.4	1.3	16.3	23.0	23.6	48.8	36.7	9.6	95.1
April	3.1	3.2	9.4	5.2	1.1	15.6	23.2	23.9	48.7	36.9	8.3	93.8
May	2.9	3.0	8.5	5.0	0.7	14.3	23.2	23.8	47.8	38.0	9.6	95.4
June	3.1	3.1	8.6	5.2	1.1	15.0	24.2	24.8	47.3	39.6	12.9	99.8
July	3.1	3.2	8.8	5.7	1.2	15.6	22.8	23.4	45.3	40.0	14.0	99.4
August	3.3	3.4	9.1	5.9	1.4	16.4	23.7	24.3	47.5	40.3	11.8	99.6
September	3.3	3.3	8.6	5.3	1.3	15.2	23.3	23.9	46.5	37.2	9.1	92.9
October	3.1	3.2	9.4	5.5	1.1	16.0	21.8	22.4	48.3	37.5	11.0	96.8
November	3.3	3.3	9.7	5.7	1.0	16.4	21.7	22.1	48.1	37.2	8.9	94.3
December	3.4	3.5	10.2	5.6	0.9	16.7	22.1	22.6	49.8	36.1	9.3	95.1
2001	3.2	3.2	9.2	5.4	1.1	15.7	22.7	23.3	47.7	37.6	10.0	95.3
2002												
January	3.4	3.4	9.7	5.2	0.9	15.8	22.4	22.8	49.1	34.5	8.3	91.9
February	3.5	3.6	9.8	5.5	0.7	16.0	23.4	23.9	49.8	36.0	7.3	93.1
March	3.3	3.4	9.5	5.2	0.9	15.7	23.1	23.6	50.0	36.9	9.2	96.1
April	3.2	3.4	9.2	5.3	1.2	15.7	23.5	24.1	49.2	38.4	9.0	96.6
May	3.4	3.5	9.3	5.6	1.2	16.2	24.0	24.5	48.7	38.8	9.5	97.0
June	3.5	3.6	9.5	5.5	1.0	16.0	24.1	24.5	49.3	37.8	10.4	97.4
July	3.4	3.6	9.3	5.6	1.4	16.3	23.8	24.3	47.8	38.3	10.2	96.3
August	3.6	3.6	9.4	6.0	1.0	16.4	24.7	25.1	48.1	40.1	12.2	100.4
September	3.4	3.5	9.2	5.6	1.2	16.0	23.5	23.9	46.7	37.5	9.8	94.0
October	3.5	3.6	9.9	6.0	1.2	17.1	23.6	24.2	47.8	39.9	9.2	96.8
November	3.5	3.6	9.8	5.6	1.3	16.8	23.5	24.0	46.7	38.7	9.1	94.5
December	3.6	3.7	9.7	5.8	1.6	17.1	23.8	24.3	45.8	39.3	7.8	92.9
2002	3.4	3.5	9.5	5.6	1.1	16.3	23.6	24.1	48.2	38.0	9.3	95.6
2003												
January	3.3	3.4	9.2	5.7	1.2	16.0	22.6	23.1	44.6	39.6	8.8	93.0
February	3.0	3.1	8.6	5.2	0.8	14.6	22.7	23.2	44.3	39.7	7.4	91.4
March	2.9	2.9	7.9	5.2	NA	13.9	22.8	23.3	44.4	41.1	8.0	93.4
April	3.0	3.1	8.3	5.5	1.0	14.8	22.7	23.2	44.0	42.2	7.4	93.6
May	3.7	3.8	8.4	6.1	1.0	15.6	24.8	25.4	43.3	43.8	9.1	96.2
June	3.9	3.9	8.8	6.2	1.2	16.1	25.6	26.0	44.6	43.6	11.1	99.3
July	3.9	4.0	9.0	6.4	1.2	16.5	25.6	26.0	44.6	44.2	11.3	100.1
August	3.7	3.8	8.6	6.3	1.1	16.0	25.7	26.1	45.0	45.6	11.6	102.1
September	3.5	3.5	7.7	5.8	1.0	14.5	24.3	24.8	40.9	44.9	10.3	96.1
October	3.7	3.8	8.2	6.1	1.1	15.4	24.8	25.2	42.1	44.3	8.0	94.4
November	3.8	3.9	8.4	6.1	0.7	15.1	24.5	25.0	41.8	42.8	5.1	89.8
December	3.8	3.9	8.5	6.3	0.4	15.3	24.7	25.0	42.0	44.1	5.0	91.1
2003	3.5	3.6	8.5	5.9	1.0	15.3	24.2	24.7	43.5	43.0	8.6	95.1

Dash (-) = No data reported.

NA = Not available.

W = Withheld to avoid disclosure of individual company data.

^a Includes sales through retail outlets as well as all direct sales to end users that were not made through company-operated retail outlets, e.g., sales to agricultural customers, commercial sales, and industrial sales.

Note: Totals may not equal the sum of the components due to rounding.

Source: Energy Information Administration Form EIA-782A, "Refiners'/Gas Plant Operators' Monthly Petroleum Product Sales Report."

Table 14. U.S. Propane (Consumer Grade) Prices by Sales Type
(Cents per Gallon Excluding Taxes)

Year Month	Sales to End Users							Sales for Resale
	Residential Consumers	Commercial/ Institutional Consumers	Industrial Consumers	Through Retail Outlets	Petro- Chemical	Other End Users	Average	
1994	87.2	76.5	65.2	73.6	31.1	63.4	77.6	33.6
1995	86.5	77.7	64.6	74.7	32.4	66.2	76.6	35.4
1996	99.1	88.4	73.3	75.7	41.3	76.4	88.6	47.1
1997	99.6	90.5	77.8	72.6	38.4	74.3	87.8	42.6
1998	88.8	81.6	69.2	67.6	27.0	64.7	77.4	29.7
1999	88.5	80.8	73.4	85.3	34.1	65.9	78.1	35.4
2000	117.3	104.8	99.0	110.4	54.1	90.7	104.8	60.3
2001								
January	157.6	141.7	138.5	147.8	74.2	124.3	147.5	87.4
February	144.4	128.1	125.7	135.3	61.2	109.6	131.3	69.8
March	134.7	116.6	114.2	126.9	54.7	101.2	117.3	61.7
April	130.3	114.2	109.4	124.7	54.2	100.6	111.6	59.5
May	130.1	112.7	106.8	126.3	52.4	104.2	104.5	56.9
June	118.9	107.6	101.8	120.9	49.0	97.2	97.2	50.0
July	109.6	102.8	96.0	115.0	43.8	88.8	89.0	44.5
August	105.6	99.1	93.2	113.9	44.6	85.4	88.6	46.1
September	109.5	97.8	92.1	109.0	42.6	84.4	87.4	47.3
October	111.6	97.4	93.7	105.1	42.9	81.2	90.8	46.9
November	111.1	96.0	89.3	W	41.1	84.6	94.8	42.6
December	110.3	92.9	90.6	102.0	37.7	83.5	94.7	39.7
2001	128.5	113.5	107.4	119.0	47.8	95.4	109.4	55.6
2002								
January	111.1	93.7	90.3	103.1	33.2	84.1	99.4	39.2
February	111.1	94.0	91.1	102.7	30.8	83.9	98.5	37.7
March	107.9	95.1	92.2	101.6	35.9	83.4	97.2	40.9
April	110.6	94.6	93.0	103.2	39.6	91.0	94.6	42.6
May	111.0	95.3	92.1	102.1	38.6	95.4	92.8	41.6
June	109.0	93.7	90.7	102.0	36.7	89.9	86.7	38.8
July	101.5	90.8	89.2	101.4	36.8	83.6	86.2	38.4
August	96.6	88.4	91.2	98.7	39.3	82.7	87.5	42.2
September	99.7	88.9	91.9	100.7	45.4	82.6	89.7	47.7
October	104.1	84.6	92.7	104.3	44.8	75.5	90.2	49.3
November	108.6	92.1	94.4	108.0	45.2	83.8	96.6	49.9
December	114.3	99.0	99.0	113.4	46.9	90.6	105.5	53.5
2002	108.6	92.9	92.4	104.0	39.3	84.0	95.8	44.0
2003								
January	122.6	106.5	105.2	W	54.5	96.7	113.6	60.9
February	133.4	117.9	116.4	122.6	66.1	107.7	125.5	72.8
March	143.1	123.7	121.7	W	64.9	111.8	130.6	70.3
April	133.0	108.0	107.8	W	50.1	109.9	116.1	55.0
May	129.5	108.5	103.4	W	52.3	127.3	112.5	55.9
June	124.9	107.4	104.4	W	54.5	127.9	110.1	57.4
July	NA	104.7	103.1	W	52.9	110.6	103.5	56.7
August	115.5	99.3	103.8	W	54.2	102.6	103.2	59.3
September	117.1	103.1	103.3	W	52.5	101.2	105.4	57.5
October	120.6	105.7	104.4	W	54.8	96.4	106.6	60.2
November	125.1	108.3	105.8	W	55.0	102.9	112.1	59.3
December	130.9	112.1	110.6	W	60.4	103.7	119.8	65.1
2003	127.4	109.8	108.1	W	55.9	104.9	115.0	61.5

NA = Not available.

W = Withheld to avoid disclosure of individual company data.

Notes: The 4th quarter of 1993 was a transitional period between the predecessor EIA-782 survey system and the revised EIA-782 survey system. The revised survey system contains additional product and sales categories, which may not be consistent with categories derived from the predecessor survey system. Beginning January 1994 all data are from the revised survey system and are consistent.

Sources: Energy Information Administration Forms EIA-782A, "Refiners'/Gas Plant Operators' Monthly Petroleum Product Sales Report," and EIA-782B, "Resellers'/Retailers' Monthly Petroleum Product Sales Report."

Table 15. U.S. No. 2 Distillate^a Prices by Sales Type
(Cents per Gallon Excluding Taxes)

Year Month	Sales to End Users						Sales for Resale
	Residential Consumers	Commercial/ Institutional Consumers	Industrial Consumers	Through Retail Outlets ^b	Other End Users ^c	Average	
1983	107.8	86.3	88.3	94.3	89.7	93.3	81.8
1984	109.1	85.7	87.0	92.0	89.2	92.6	81.9
1985	105.3	82.1	83.4	88.6	85.3	89.0	78.1
1986	83.6	51.4	53.7	59.8	56.9	61.4	48.0
1987	80.3	56.6	59.7	64.4	63.1	64.3	53.5
1988	81.3	51.9	54.2	61.6	58.7	61.2	48.2
1989	90.0	60.8	63.8	68.5	66.7	69.5	57.2
1990	106.3	75.1	78.0	85.2	82.8	84.1	70.6
1991	101.9	67.5	69.7	74.5	73.8	76.0	62.7
1992	93.4	63.7	67.5	72.1	72.1	72.6	59.1
1993	91.1	62.0	66.7	71.1	70.5	71.0	56.6
1994	88.4	58.7	64.1	67.3	65.5	67.5	52.9
1995	86.7	59.3	64.4	67.0	67.3	67.3	53.6
1996	98.9	71.4	77.1	78.8	79.3	79.3	66.0
1997	98.4	67.4	71.2	74.5	75.3	75.3	61.1
1998	85.2	52.5	55.6	59.3	60.0	59.9	45.0
1999	87.6	60.5	63.9	68.5	68.7	67.8	53.8
2000	131.1	96.2	99.1	103.6	105.0	104.4	90.1
2001							
January	138.6	100.0	103.8	105.4	104.5	111.0	90.7
February	134.3	94.6	98.3	101.2	102.6	105.7	85.4
March	129.4	87.5	90.1	93.5	95.8	97.7	78.4
April	127.3	89.5	94.3	96.8	99.7	97.7	82.4
May	124.9	94.6	99.0	104.3	105.0	101.6	88.6
June	120.3	91.0	96.1	100.5	101.1	97.7	84.6
July	113.6	83.0	87.3	90.4	94.4	88.9	75.6
August	114.3	87.5	92.2	94.7	97.7	93.2	80.6
September	117.5	90.6	96.6	102.1	102.3	98.5	83.6
October	114.2	78.2	84.6	88.7	90.8	87.0	71.3
November	111.0	70.4	75.3	79.7	81.3	79.9	62.4
December	108.0	64.9	67.3	71.3	73.2	74.9	56.6
2001	125.0	86.1	90.7	94.3	96.0	94.8	78.5
2002							
January	109.7	65.3	67.5	70.1	70.9	76.6	56.7
February	108.4	65.8	68.9	70.7	72.7	76.0	58.1
March	110.0	73.9	77.6	79.1	79.6	83.2	67.0
April	111.6	77.4	81.9	84.9	85.0	85.4	71.0
May	109.3	76.9	81.1	84.7	85.2	83.8	70.9
June	105.7	75.6	79.9	82.6	83.9	81.4	68.6
July	102.9	77.8	81.9	84.8	84.4	83.0	71.5
August	103.8	81.6	85.3	87.9	88.3	86.5	75.7
September	109.9	88.7	92.1	95.3	96.2	94.0	83.3
October	114.8	90.1	94.2	99.6	100.1	97.8	85.1
November	118.0	85.9	89.5	95.4	93.8	95.3	78.5
December	123.8	89.8	92.2	96.3	96.0	100.8	82.6
2002	112.9	79.2	82.6	86.2	87.8	87.4	72.8
2003							
January	133.2	98.1	100.2	103.2	102.1	109.8	90.4
February	150.8	115.3	117.2	121.0	119.3	126.7	108.2
March	153.9	113.7	116.7	124.1	116.8	125.2	103.8
April	134.6	95.2	100.0	106.9	103.7	105.7	86.5
May	126.7	87.3	92.9	97.6	95.6	95.5	79.8
June	121.7	88.6	93.6	96.1	94.4	94.4	81.2
July	116.4	90.8	95.8	97.5	96.0	95.8	83.9
August	117.6	96.2	100.5	103.0	101.6	101.1	88.6
September	118.8	90.0	94.8	99.5	97.4	97.1	81.0
October	123.6	94.7	97.5	101.8	103.5	101.9	87.2
November	128.3	94.6	97.6	101.9	101.6	102.9	86.9
December	134.1	98.3	100.2	103.0	103.2	108.5	89.9
2003	135.5	97.0	100.3	104.4	102.1	105.8	89.1

^a Includes sales of No. 2 fuel oil and high- and low-sulfur diesel fuels.

^b Includes low-sulfur diesel fuel only.

^c All end-user sales not included in the other end-user categories shown, e.g., sales to agricultural customers or utilities.

Sources: Energy Information Administration Forms EIA-782A, "Refiners/Gas Plant Operators' Monthly Petroleum Product Sales Report," and EIA-782B, "Resellers/Retailers' Monthly Petroleum Product Sales Report."

Table 16. U.S. No. 2 Diesel Fuel Prices by Sales Type
(Cents per Gallon Excluding Taxes)

Year Month	Sales to End Users					Sales for Resale
	Commercial/ Institutional Consumers	Industrial Consumers	Through Retail Outlets ^a	Other End Users ^b	Average	
1994	57.7	64.5	67.3	66.1	62.8	53.8
1995	58.8	64.9	67.0	67.7	63.6	54.6
1996	71.1	77.5	78.8	79.6	75.7	66.7
1997	66.6	71.5	74.5	75.7	71.4	61.6
1998	51.6	56.2	59.3	60.4	56.2	45.4
1999	60.5	64.5	68.5	69.4	65.4	55.2
2000	95.8	99.0	103.6	105.2	100.6	90.4
2001						
January	98.3	103.3	105.4	104.3	102.7	91.2
February	93.4	98.4	101.2	102.6	98.3	86.5
March	86.4	90.3	93.5	96.0	91.1	78.8
April	89.1	94.3	96.8	100.1	94.4	83.3
May	95.2	99.5	104.3	105.1	100.7	90.3
June	91.6	96.5	100.5	101.4	97.3	85.8
July	83.3	87.5	90.4	94.4	88.3	76.3
August	88.0	92.5	94.7	97.8	92.6	81.5
September	90.9	97.1	102.1	102.4	97.7	84.7
October	78.2	84.9	88.7	90.6	84.9	72.0
November	69.8	75.4	79.7	81.4	76.0	62.4
December	63.2	66.7	71.3	72.9	68.1	55.5
2001	85.7	90.7	94.3	96.0	91.2	79.1
2002						
January	62.8	66.7	70.1	70.4	67.2	55.2
February	64.1	68.4	70.7	72.2	68.3	57.3
March	72.6	77.5	79.1	79.6	76.7	67.5
April	77.0	82.2	84.9	85.0	82.0	71.5
May	76.8	81.1	84.7	85.3	81.8	71.3
June	75.8	80.1	82.6	84.1	80.4	69.0
July	78.0	81.9	84.8	84.9	82.2	71.8
August	82.1	85.6	87.9	88.6	85.9	76.4
September	89.0	92.4	95.3	96.4	93.1	84.2
October	90.4	94.5	99.6	100.3	96.2	86.3
November	85.7	89.6	95.4	93.9	91.3	79.5
December	88.4	92.0	96.3	95.9	93.1	83.1
2002	78.9	82.6	86.2	87.9	83.7	73.5
2003						
January	96.1	100.1	103.2	101.7	100.2	90.5
February	113.6	116.7	121.0	119.0	117.6	108.7
March	112.1	116.8	124.1	116.6	117.9	103.4
April	94.5	100.3	106.9	103.8	101.5	87.2
May	87.1	93.8	97.6	95.7	93.3	80.3
June	88.6	94.3	96.1	94.7	93.1	81.8
July	91.1	96.7	97.5	96.6	95.1	84.6
August	96.7	101.1	103.0	101.9	100.5	89.6
September	90.1	95.3	99.5	97.7	95.6	81.6
October	94.5	97.7	101.8	103.9	99.5	87.8
November	94.3	97.9	101.9	102.0	99.0	87.4
December	97.1	100.1	103.0	103.5	100.8	90.1
2003	96.1	100.4	104.4	102.2	100.8	89.1

^a Includes low-sulfur diesel fuel only.

^b All end-user sales not included in the other end-user categories shown, e.g., sales to agricultural customers or utilities.

Notes: The 4th quarter of 1993 was a transitional period between the predecessor EIA-782 survey system and the revised EIA-782 survey system. The revised survey system contains additional product and sales categories, which may not be consistent with categories derived from the predecessor survey system. Beginning January 1994 all data are from the revised survey system and are consistent.

Sources: Energy Information Administration Forms EIA-782A, "Refiners'/Gas Plant Operators' Monthly Petroleum Product Sales Report," and EIA-782B, "Resellers'/Retailers' Monthly Petroleum Product Sales Report."

Table 17. U.S. No. 2 Diesel Fuel Prices by Sulfur Content and Sales Type
(Cents per Gallon Excluding Taxes)

Year Month	Low-Sulfur Diesel Fuel						High-Sulfur Diesel Fuel				
	Sales to End Users					Sales for Resale	Sales to End Users				Sales for Resale
	Commercial/ Institutional Consumers	Industrial Consumers	Through Retail Outlets	Other End Users ^a	Average		Commercial/ Institutional Consumers	Industrial Consumers	Other End Users ^a	Average	
1994	59.1	66.0	67.3	67.4	64.2	54.2	55.3	62.9	64.6	59.8	51.9
1995	59.8	66.3	67.0	68.4	64.5	55.1	56.8	63.6	66.7	61.4	52.4
1996	72.3	79.1	78.8	80.6	76.7	67.3	68.7	75.9	78.4	73.2	63.9
1997	67.0	72.2	74.5	76.0	71.9	61.9	65.9	70.8	75.3	69.8	60.2
1998	51.5	55.7	59.3	60.1	56.5	45.7	51.8	56.7	60.8	55.5	43.7
1999	61.7	64.3	68.5	70.4	66.3	55.7	58.0	64.8	67.6	62.0	51.9
2000	96.8	97.1	103.6	106.2	101.4	90.9	93.8	101.7	103.9	98.1	87.5
2001											
January	99.4	100.8	105.4	102.1	102.9	91.6	96.2	107.0	110.1	101.8	89.2
February	94.2	96.5	101.2	101.4	98.8	86.9	91.9	101.1	104.7	96.6	83.8
March	87.2	88.9	93.5	94.7	91.5	79.2	84.8	92.4	98.1	89.7	76.3
April	90.7	92.9	96.8	99.9	95.1	83.6	86.3	96.2	100.5	92.1	80.8
May	96.7	98.9	104.3	105.3	101.7	90.8	92.3	100.4	104.7	97.3	86.0
June	92.8	96.6	100.5	101.3	98.1	86.3	89.4	96.4	101.5	94.2	82.1
July	84.0	86.1	90.4	94.0	88.7	76.6	82.0	89.8	94.9	86.9	74.3
August	88.5	91.0	94.7	97.5	92.9	81.9	87.0	95.2	98.3	91.6	78.5
September	92.0	96.0	102.1	101.5	98.5	85.1	88.8	98.9	103.8	94.7	81.8
October	79.1	83.5	88.7	88.6	85.5	72.3	76.5	86.8	94.1	82.9	70.3
November	70.8	72.9	79.7	79.3	76.6	62.6	68.1	79.2	85.5	74.0	60.8
December	64.1	64.8	71.3	70.7	68.5	55.5	61.6	70.6	77.1	66.4	55.3
2001	86.8	89.1	94.3	94.9	91.7	79.4	83.7	93.3	98.0	89.2	77.1
2002											
January	63.7	64.8	70.1	68.7	67.7	55.3	61.3	69.7	73.8	65.5	54.5
February	65.0	66.6	70.7	70.9	68.8	57.5	62.5	71.1	74.8	66.4	55.4
March	73.6	76.3	79.1	78.2	77.1	67.8	70.6	79.7	81.9	75.2	64.8
April	78.2	81.1	84.9	83.4	82.5	71.9	74.8	83.9	87.5	80.4	68.9
May	77.6	80.1	84.7	82.7	82.0	71.4	75.3	82.5	88.8	81.0	69.9
June	77.2	78.8	82.6	80.8	80.6	69.2	73.2	82.0	88.2	79.9	67.6
July	79.3	80.5	84.8	83.4	82.7	72.0	75.8	84.3	87.3	80.6	70.0
August	83.6	84.5	87.9	86.9	86.3	76.8	79.3	87.4	91.3	84.3	73.5
September	90.6	91.8	95.3	95.1	93.7	84.5	86.2	93.4	98.3	91.3	81.2
October	91.7	94.0	99.6	98.0	96.7	86.8	88.0	95.6	103.4	94.8	82.7
November	86.8	88.9	95.4	91.7	91.9	79.8	83.7	91.0	97.5	88.9	76.9
December	89.4	90.8	96.3	93.7	93.6	83.5	86.4	94.3	100.4	91.1	80.4
2002	80.1	81.9	86.2	85.8	84.1	73.8	76.7	83.9	91.3	82.2	71.2
2003											
January	96.7	97.9	103.2	100.4	100.5	90.8	94.7	104.5	103.8	99.0	88.5
February	114.6	114.2	121.0	117.9	118.2	109.3	111.8	121.8	121.4	115.6	105.5
March	113.2	115.4	124.1	115.4	119.0	104.2	109.8	119.5	118.4	113.9	98.6
April	96.0	100.1	106.9	100.4	102.3	87.7	91.6	100.7	109.2	98.7	83.7
May	88.4	93.2	97.6	93.2	93.9	80.7	84.7	94.7	98.8	91.3	77.7
June	89.8	94.1	96.1	93.4	93.8	82.1	86.6	94.6	96.2	91.1	79.6
July	92.3	96.4	97.5	96.5	95.8	84.9	88.9	97.1	96.7	92.8	82.3
August	97.6	101.2	103.0	101.0	101.0	89.9	94.8	100.8	103.4	98.5	87.0
September	90.7	95.2	99.5	95.3	96.0	81.8	88.8	95.3	101.7	94.1	80.2
October	95.2	96.8	101.8	101.4	99.5	88.2	93.0	99.4	107.2	99.5	85.4
November	95.3	97.0	101.9	100.2	99.4	87.9	92.3	99.6	105.2	97.3	84.6
December	98.2	99.6	103.0	102.5	101.3	90.6	94.6	101.1	105.5	98.5	87.6
2003	97.2	99.7	104.4	100.9	101.4	89.5	94.1	101.8	104.4	98.6	87.0

^a All end-user sales not included in the other end-user categories shown, e.g., sales to agricultural customers or utilities.

Notes: The 4th quarter of 1993 was a transitional period between the predecessor EIA-782 survey system and the revised EIA-782 survey system. The revised survey system contains additional product and sales categories, which may not be consistent with categories derived from the predecessor survey system. Beginning January 1994 all data are from the revised survey system and are consistent.

Sources: Energy Information Administration Forms EIA-782A, "Refiners'/Gas Plant Operators' Monthly Petroleum Product Sales Report," and EIA-782B, "Resellers'/Retailers' Monthly Petroleum Product Sales Report."

Table 18. Prices of No. 2 Distillate to Residences by PAD District and Selected States
(Cents per Gallon Excluding Taxes)

Year Month	U.S. Average	PAD District I								
		Average	CT	ME	MA	NH	RI	VT	DE	DC
1978	49.0	-	50.1	48.6	48.8	50.3	50.7	50.8	47.8	50.7
1979	70.4	-	72.0	68.8	70.9	72.5	72.8	72.5	68.2	74.2
1980	97.4	-	98.3	96.3	97.8	100.4	101.1	101.5	95.4	102.6
1981	119.4	-	121.7	120.4	121.3	123.7	123.8	125.4	117.3	127.4
1982	116.0	-	118.3	115.5	117.6	117.4	120.1	120.1	111.3	124.5
1983	107.8	109.0	109.1	102.8	109.1	104.1	110.5	112.9	106.0	117.0
1984	109.1	111.3	112.1	103.9	111.6	108.4	111.4	111.9	109.6	118.7
1985	105.3	106.8	108.0	99.7	107.0	102.4	106.7	107.7	104.6	114.3
1986	83.6	86.2	89.0	74.4	82.1	75.9	82.8	86.6	85.0	93.1
1987	80.3	81.4	83.4	74.7	80.6	76.5	82.5	81.1	79.3	91.8
1988	81.3	82.7	85.3	77.7	82.1	78.2	83.6	82.6	80.1	91.6
1989	90.0	91.7	92.9	89.4	92.6	89.3	93.9	90.5	88.2	98.6
1990	106.3	108.1	109.8	98.9	108.4	102.8	108.6	107.0	105.8	107.8
1991	101.9	104.1	106.2	96.0	103.0	91.6	99.9	101.9	99.7	112.2
1992	93.4	94.9	94.7	87.1	92.5	85.6	91.2	92.1	92.3	105.7
1993	91.1	92.1	91.9	82.6	89.7	82.8	89.3	90.4	89.9	104.5
1994	88.4	89.4	89.0	81.8	87.0	79.2	88.5	87.6	89.4	100.0
1995	86.7	87.5	86.4	78.7	84.4	77.9	87.4	85.3	87.0	101.0
1996	98.9	100.0	98.6	97.2	97.6	94.0	98.6	96.9	98.4	117.8
1997	98.4	99.3	96.3	94.2	96.0	94.2	98.9	98.7	98.4	117.4
1998	85.2	86.2	83.1	78.8	81.8	78.8	86.8	87.3	85.8	102.2
1999	87.6	88.0	85.2	81.3	83.6	77.0	85.8	85.4	88.4	101.1
2000	131.1	132.5	129.1	129.7	127.3	128.1	125.9	125.5	127.0	W
2001										
January	138.6	139.7	136.8	132.5	132.7	134.9	133.9	132.8	139.8	W
February	134.3	135.2	132.0	129.5	129.5	133.3	129.4	130.8	137.6	W
March	129.4	130.4	129.0	125.6	125.6	130.1	125.5	129.1	129.3	W
April	127.3	127.9	127.2	122.9	124.3	126.7	124.1	128.0	123.2	W
May	124.9	124.8	125.1	121.8	122.7	124.5	122.4	124.8	113.3	W
June	120.3	120.3	119.1	121.6	119.8	125.5	121.6	125.0	110.8	W
July	113.6	114.1	113.1	117.8	113.8	121.2	117.2	122.7	102.0	W
August	114.3	114.4	110.8	115.2	113.5	118.9	118.0	121.9	101.5	W
September	117.5	116.8	116.2	118.7	115.9	118.4	119.7	123.0	106.2	W
October	114.2	114.8	113.4	114.6	113.4	117.6	117.4	121.1	NA	W
November	111.0	112.2	109.2	110.2	109.9	114.8	113.9	118.9	110.3	W
December	108.0	109.8	107.4	108.7	106.9	114.2	111.3	117.3	108.8	W
2001	125.0	126.0	123.9	121.7	122.1	125.6	123.6	126.1	123.4	143.1
2002										
January	109.7	111.6	108.3	109.5	107.4	113.2	112.1	117.9	114.2	W
February	108.4	110.1	106.6	108.6	106.9	114.1	110.9	117.6	111.0	W
March	110.0	111.8	109.1	112.2	111.2	110.1	107.7	116.2	113.0	W
April	111.6	113.2	109.6	111.4	114.0	109.7	112.0	117.7	116.2	129.2
May	109.3	111.1	108.9	111.5	113.6	108.4	109.8	118.1	106.1	NA
June	105.7	107.9	110.6	110.1	110.9	104.6	106.1	114.0	100.5	111.5
July	102.9	104.6	106.4	109.5	111.3	101.4	105.6	111.5	98.2	W
August	103.8	105.2	107.3	107.7	112.5	102.2	107.7	112.1	99.5	W
September	109.9	110.4	110.7	111.2	113.7	106.0	110.6	114.3	111.2	W
October	114.8	114.7	112.0	116.7	116.2	111.4	110.5	117.6	114.8	129.2
November	118.0	118.3	115.5	115.4	118.5	113.4	114.4	117.9	119.8	W
December	123.8	124.5	121.5	119.4	125.0	118.1	120.8	120.5	129.1	W
2002	112.9	114.3	111.8	112.9	114.1	111.9	112.4	117.2	116.4	W
2003										
January	133.2	134.2	130.9	128.0	135.0	127.2	132.3	126.4	138.4	W
February	150.8	152.0	149.6	142.5	152.4	145.0	151.8	138.9	161.4	W
March	153.9	155.4	152.2	147.0	153.9	148.4	151.4	144.0	168.5	W
April	134.6	136.2	133.5	130.1	136.0	132.6	131.5	131.9	142.2	NA
May	126.7	129.2	127.8	125.2	132.7	126.4	123.9	125.8	130.0	NA
June	121.7	123.5	124.6	124.5	129.5	121.4	119.9	122.3	125.5	127.6
July	116.4	118.2	120.6	121.3	127.1	118.7	117.3	120.3	119.7	W
August	117.6	118.6	120.8	120.6	127.4	119.1	NA	121.0	117.2	W
September	118.8	120.9	122.6	121.5	125.9	119.4	120.6	121.3	121.7	128.6
October	123.6	125.0	124.4	122.8	126.0	120.4	121.1	126.0	125.6	W
November	128.3	129.6	129.8	124.3	129.8	121.8	127.3	126.9	130.0	W
December	134.1	135.3	133.6	129.4	134.9	126.1	133.1	129.0	139.8	W
2003	135.5	137.2	135.5	131.4	138.6	131.2	134.4	130.9	143.3	W

See footnotes at end of table.

Table 18. Prices of No. 2 Distillate to Residences by PAD District and Selected States

(Cents per Gallon Excluding Taxes) — Continued

Year Month	PAD District I (Continued)						PAD District II			
	MD	NJ	NY	PA	VA	WV	Average	IL	IN	MI
1978	49.2	49.6	50.1	48.8	49.1	46.2	—	46.5	48.5	47.9
1979	70.1	71.0	71.2	69.8	70.4	65.1	—	68.8	72.7	70.9
1980	97.9	97.9	98.2	96.4	98.5	92.2	—	95.8	99.6	97.8
1981	121.4	121.5	123.2	118.1	120.5	115.0	—	114.9	118.5	118.3
1982	117.1	117.4	120.5	113.7	117.7	109.3	—	110.9	114.3	113.9
1983	110.3	107.9	112.1	105.8	108.7	101.0	102.0	100.4	100.7	106.4
1984	113.5	111.0	115.5	107.9	110.5	102.1	101.7	100.1	103.1	105.0
1985	108.8	105.9	111.3	102.3	106.3	98.0	99.4	97.5	99.1	102.1
1986	91.4	90.2	91.1	81.4	86.6	74.6	72.7	NA	74.8	81.0
1987	86.6	84.3	85.2	76.9	79.5	76.4	74.8	79.8	75.4	77.5
1988	87.0	84.8	86.3	77.8	80.5	74.2	74.3	77.6	75.4	77.5
1989	93.8	91.8	95.8	85.1	87.0	83.0	81.9	80.9	83.2	85.3
1990	111.9	108.8	112.5	102.6	110.6	99.1	97.8	96.1	99.3	100.9
1991	108.4	104.0	111.3	99.7	101.1	93.4	90.8	92.7	91.8	94.2
1992	100.0	93.9	102.8	89.0	92.8	86.4	82.9	87.7	81.2	87.2
1993	98.1	92.4	100.1	86.3	89.3	85.6	83.3	84.4	81.0	87.2
1994	95.0	89.5	96.6	85.7	85.3	80.9	80.8	78.4	81.2	86.3
1995	93.6	88.8	95.5	82.6	84.4	81.5	80.9	78.5	81.6	86.0
1996	106.3	102.4	106.3	95.3	95.2	96.0	91.3	89.3	91.2	97.7
1997	105.7	103.3	106.5	95.0	94.8	96.2	91.0	87.0	86.5	94.2
1998	90.2	89.2	94.8	81.4	85.6	81.8	76.5	73.5	74.8	80.4
1999	90.7	91.3	96.9	81.5	87.0	78.9	82.3	71.6	79.3	88.3
2000	135.1	140.4	144.2	122.4	126.9	125.1	119.2	109.5	120.7	NA
2001										
January	150.3	146.3	147.7	133.1	141.4	137.1	129.1	122.7	127.0	NA
February	146.5	140.6	143.5	127.9	133.4	127.3	125.7	118.9	123.1	NA
March	140.8	133.8	139.9	121.5	122.8	119.1	117.7	115.7	114.1	NA
April	137.2	131.8	139.6	116.8	117.4	117.1	118.9	NA	112.3	NA
May	128.7	130.8	137.3	111.1	112.8	113.7	122.4	111.3	117.8	NA
June	123.2	128.7	133.2	105.7	112.7	112.5	116.5	105.6	109.8	NA
July	116.9	123.2	126.9	101.0	106.6	104.5	108.4	102.2	102.9	NA
August	117.0	118.3	127.2	103.6	107.6	109.3	113.4	111.8	111.7	NA
September	120.0	120.0	129.1	104.9	110.4	112.0	120.5	118.3	118.0	136.4
October	117.7	118.0	125.9	102.6	106.9	104.3	109.6	109.5	108.3	122.1
November	117.1	114.2	123.3	101.2	102.4	NA	101.1	98.2	98.2	112.0
December	114.3	112.2	119.8	99.7	97.8	95.5	95.0	91.7	93.4	108.3
2001	134.2	131.4	136.3	115.9	120.2	113.9	116.3	112.1	113.3	NA
2002										
January	115.8	113.8	121.5	102.9	101.7	96.7	93.9	87.0	91.7	102.2
February	115.1	113.4	119.9	100.2	99.9	95.7	93.7	84.4	95.7	101.8
March	117.6	117.0	119.0	104.6	102.2	99.5	96.5	85.0	93.9	103.6
April	118.9	121.0	120.0	106.6	100.7	101.5	98.7	84.7	94.9	108.3
May	114.2	119.6	117.6	104.3	97.2	102.3	98.0	83.7	W	106.4
June	111.5	116.7	115.9	102.8	97.1	101.6	94.2	NA	W	107.0
July	109.4	113.4	114.2	95.2	98.0	101.5	94.8	96.6	W	106.8
August	110.9	114.7	NA	96.1	100.2	102.4	96.9	NA	W	107.4
September	116.4	120.7	116.6	101.4	103.1	107.1	107.0	101.2	W	113.1
October	120.1	123.6	120.1	106.6	108.7	111.1	114.1	105.6	W	120.9
November	124.7	127.5	125.1	111.3	111.1	113.7	115.0	111.9	114.0	122.2
December	131.3	135.4	130.1	117.5	120.2	121.1	118.6	111.0	121.0	124.7
2002	120.1	122.0	121.8	106.4	105.7	105.4	103.9	97.5	102.5	110.9
2003										
January	141.4	145.8	139.2	127.4	130.9	131.7	126.0	116.6	130.3	130.5
February	158.2	166.6	156.1	147.7	147.2	155.5	140.9	130.5	146.7	148.5
March	165.5	170.5	160.0	153.7	143.4	155.9	139.2	131.8	142.4	148.8
April	145.2	146.1	141.6	132.8	127.7	130.9	119.8	112.5	W	130.5
May	135.7	135.9	137.8	124.0	119.3	116.5	109.3	108.1	W	120.9
June	128.4	133.9	130.0	NA	120.3	113.2	108.5	106.1	W	114.0
July	124.4	128.5	128.4	105.6	118.5	109.5	105.3	NA	W	113.5
August	125.6	NA	124.9	108.8	120.4	113.8	110.5	114.9	106.0	119.6
September	126.9	126.1	128.9	110.7	121.1	112.3	109.4	114.0	W	119.8
October	133.8	133.3	131.8	116.3	122.7	117.2	116.2	116.5	W	122.1
November	136.5	136.5	137.5	121.4	123.8	119.3	118.0	117.7	112.8	125.9
December	143.0	144.7	142.4	128.4	129.0	128.9	121.9	119.9	123.0	126.5
2003	145.5	148.9	143.6	130.4	131.1	130.4	122.9	119.8	120.2	132.1

See footnotes at end of table.

Table 18. Prices of No. 2 Distillate to Residences by PAD District and Selected States

(Cents per Gallon Excluding Taxes) — Continued

Year Month	PAD District II (Continued)			PAD District III Average	PAD District IV		PAD District V			
	MN	OH	WI		Average	ID	Average	AK	OR	WA
1978	47.8	47.4	44.7	—	—	43.6	—	53.2	45.8	48.6
1979	72.4	68.6	67.3	—	—	62.1	—	68.2	68.0	69.7
1980	99.9	91.9	91.5	—	—	91.6	—	97.8	97.3	100.8
1981	118.4	113.2	109.1	—	—	110.4	—	118.0	111.4	116.5
1982	115.1	110.2	107.8	—	—	110.4	—	117.4	111.6	117.6
1983	103.1	101.3	101.2	87.4	94.2	101.8	106.4	108.8	103.6	109.0
1984	104.1	102.1	101.0	97.9	96.8	98.5	101.5	106.9	99.3	102.6
1985	101.9	99.7	98.3	92.5	96.1	97.2	100.9	108.3	97.1	101.1
1986	79.2	77.7	75.6	67.4	70.6	73.8	78.1	94.9	70.4	77.5
1987	74.6	74.7	75.1	63.7	69.6	68.8	77.8	86.5	72.5	79.5
1988	73.5	74.7	73.9	62.8	69.1	68.8	76.9	86.9	70.9	78.5
1989	82.4	81.6	81.1	70.7	78.6	77.8	86.6	96.4	80.2	87.4
1990	101.4	98.1	94.2	85.5	97.0	97.4	102.6	110.1	97.0	102.9
1991	91.1	91.0	89.5	78.7	92.4	95.1	99.8	105.0	93.3	101.6
1992	82.6	83.6	81.6	71.3	84.8	85.7	92.1	94.1	87.6	94.0
1993	83.2	84.0	82.3	75.4	86.0	86.2	96.8	96.1	91.8	99.9
1994	80.6	81.2	81.1	71.4	78.6	78.9	90.9	86.5	88.7	95.0
1995	80.1	80.8	81.2	69.0	84.4	83.9	90.6	83.4	89.4	96.2
1996	90.9	92.1	89.9	77.5	94.2	93.3	99.9	90.9	98.9	108.0
1997	89.9	91.3	93.3	73.8	93.7	95.3	106.0	97.3	103.1	113.9
1998	73.8	76.7	80.1	59.1	77.6	78.4	91.4	85.2	86.1	97.8
1999	77.4	82.0	84.7	64.8	80.6	76.2	100.5	96.6	93.8	106.5
2000	115.6	122.0	117.1	111.4	116.4	117.0	139.3	133.7	136.8	144.5
2001										
January	124.9	131.7	128.1	NA	122.3	120.8	142.0	NA	134.3	144.0
February	120.4	126.9	126.6	NA	121.1	114.0	142.2	147.5	134.4	145.4
March	114.7	117.4	120.1	91.9	121.2	109.4	141.2	NA	129.7	141.9
April	118.0	117.5	119.3	W	121.4	110.1	138.3	NA	130.3	141.8
May	118.7	120.5	121.9	W	W	114.0	141.5	145.6	133.8	144.6
June	114.0	112.9	117.1	W	105.2	111.9	137.1	140.6	130.0	141.3
July	106.4	104.7	110.6	W	105.1	100.3	125.8	131.8	115.4	122.7
August	115.4	110.4	117.6	W	NA	101.2	NA	124.6	116.8	119.0
September	116.3	119.1	122.1	W	106.1	107.7	128.9	NA	120.6	127.9
October	105.5	108.4	112.8	95.0	100.4	100.2	123.3	131.1	111.0	NA
November	99.9	100.8	106.1	88.8	95.2	90.2	115.7	125.7	103.6	118.1
December	91.0	95.0	96.5	81.7	79.3	75.8	107.6	119.9	95.0	110.2
2001	112.2	116.0	118.0	94.3	108.1	103.8	130.8	137.7	121.1	133.6
2002										
January	91.2	94.2	97.0	77.1	79.3	74.7	104.6	114.0	93.7	108.9
February	91.6	94.3	95.9	77.1	79.1	74.5	104.9	114.5	94.4	108.2
March	94.0	101.4	100.3	W	86.8	82.2	112.5	110.4	104.3	117.0
April	102.0	103.1	105.3	W	96.7	92.6	116.7	111.8	108.0	124.1
May	102.6	100.6	106.4	W	97.3	90.0	113.9	104.6	107.5	124.9
June	101.7	96.9	101.7	W	96.4	89.0	110.0	106.0	103.9	122.4
July	101.9	95.3	102.0	W	95.1	88.0	105.7	102.7	NA	117.7
August	105.2	100.5	103.3	W	98.0	89.9	108.8	105.8	107.6	117.0
September	111.1	107.1	112.3	W	102.9	96.6	115.5	110.0	115.5	124.2
October	116.6	114.5	118.0	W	106.9	103.4	121.6	110.5	118.5	128.5
November	114.9	115.8	120.2	W	106.4	103.5	122.6	113.0	119.3	131.2
December	117.0	119.5	121.5	W	105.5	103.0	122.1	113.9	118.0	131.2
2002	105.1	105.8	107.3	84.8	90.9	91.9	113.2	108.7	106.0	120.4
2003										
January	120.5	129.4	127.1	W	109.9	107.6	128.5	115.7	124.4	137.9
February	135.3	144.8	138.5	W	125.5	120.5	144.6	121.1	144.6	155.4
March	133.7	141.3	140.2	W	134.6	133.9	159.2	137.4	158.6	179.5
April	119.6	126.0	125.4	W	121.8	121.1	141.7	129.9	130.6	154.8
May	113.4	115.4	117.9	W	112.3	111.4	129.3	122.2	120.6	143.0
June	114.6	113.4	113.6	W	112.9	NA	128.8	122.6	125.3	143.3
July	113.8	111.5	112.1	W	111.6	107.4	126.5	NA	131.1	141.0
August	115.4	113.9	114.1	W	116.7	114.3	130.8	127.2	130.3	145.4
September	113.3	114.1	117.5	W	115.7	114.0	124.9	NA	119.1	137.0
October	119.6	120.5	121.9	W	116.3	NA	124.7	NA	116.8	135.1
November	118.3	122.3	122.7	W	121.1	122.4	133.1	126.6	123.5	141.8
December	119.1	125.3	123.8	W	120.2	120.7	137.2	127.3	125.6	146.2
2003	121.8	128.4	126.9	W	119.6	118.8	136.3	124.3	130.3	148.7

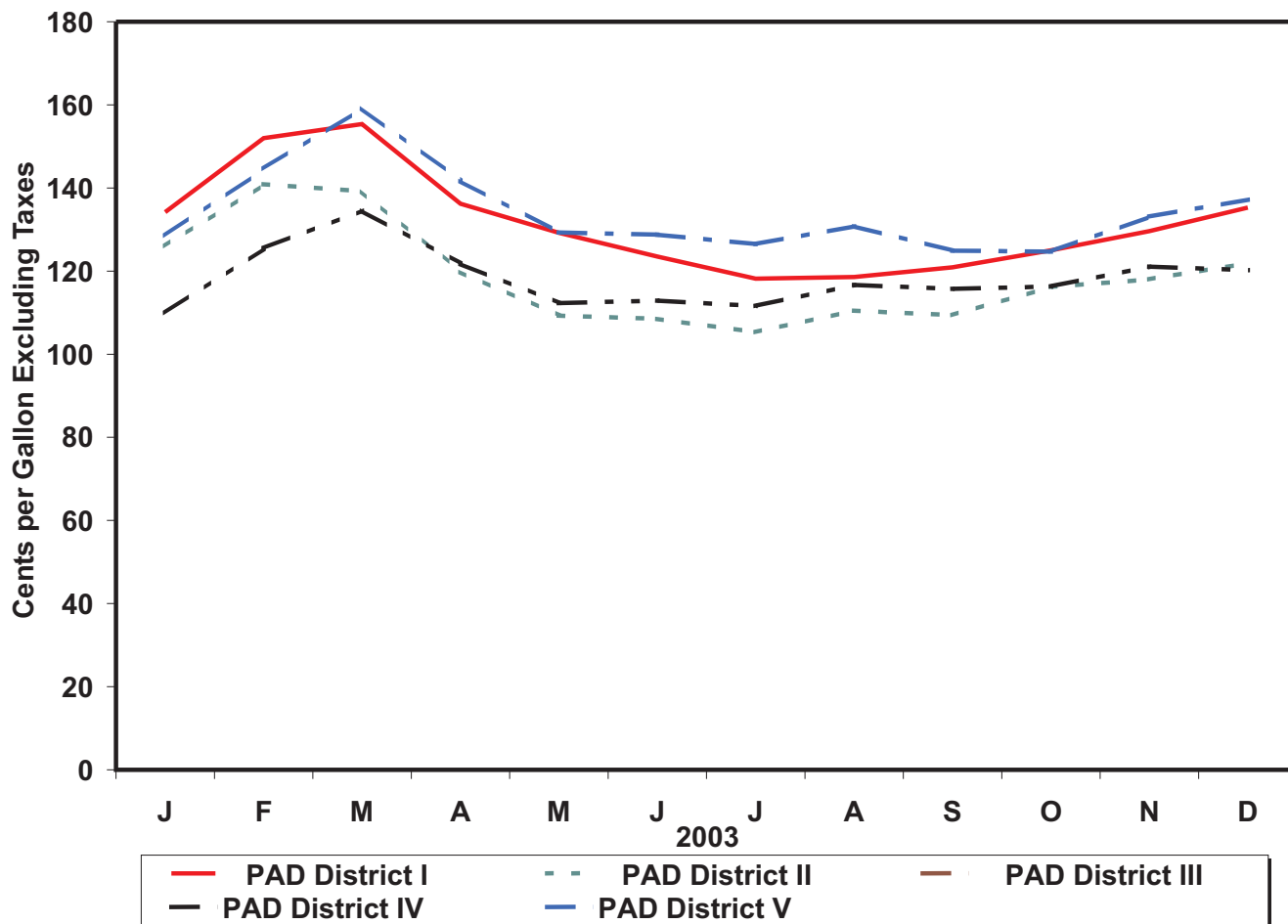
Dash (—) = No data reported.

NA = Not available.

W = Withheld to avoid disclosure of individual company data.

Sources: Energy Information Administration Forms EIA-782A, "Refiners/Gas Plant Operators' Monthly Petroleum Product Sales Report," and EIA-782B, "Resellers/Retailers' Monthly Petroleum Product Sales Report," January 1983 forward; Form EIA-9A, "No. 2 Distillate Price Monitoring Report," source for backcast estimates prior to January 1983.

Figure 6. U.S. No. 2 Distillate Prices to Residences by PAD District



Source: Energy Information Administration, Form EIA-782A, "Refiners' /Gas Plant Operators' Monthly Petroleum Product Sales Report" and Form EIA-782B, "Resellers' /Retailers' Monthly Petroleum Product Sales Report."

Table 19. U.S. Refiner Residual Fuel Oil Prices

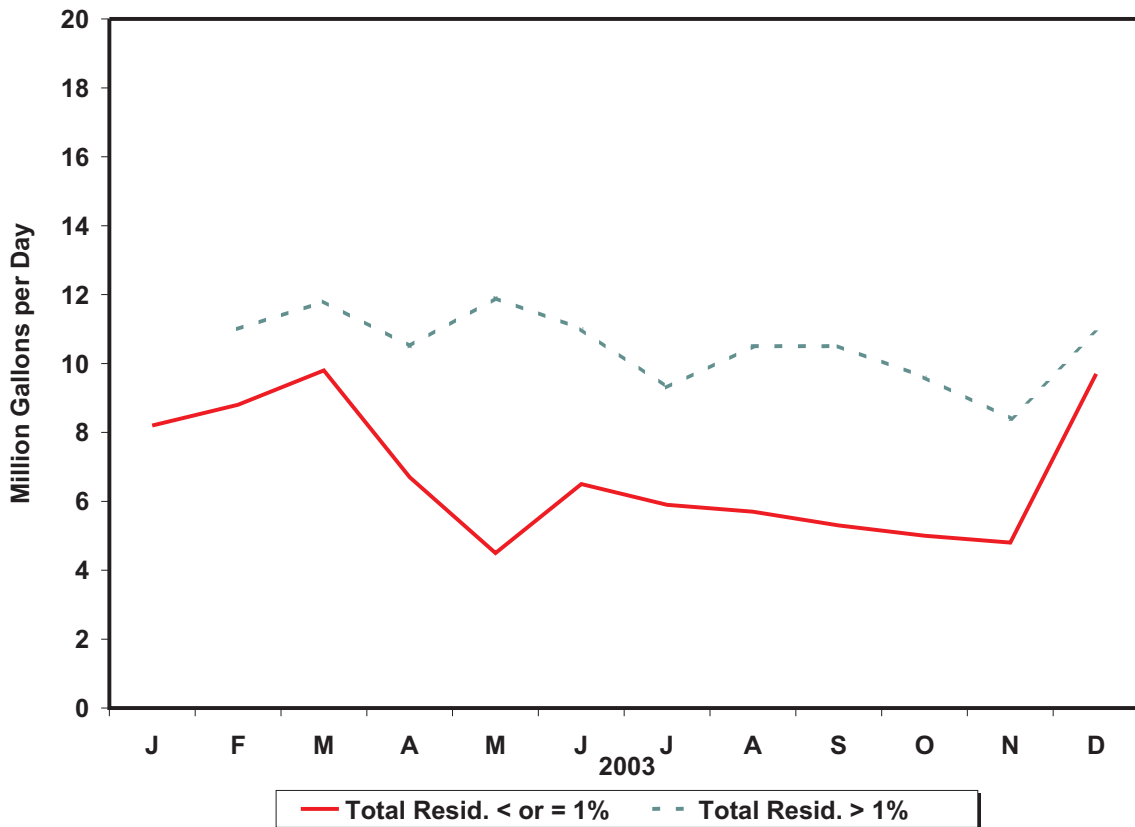
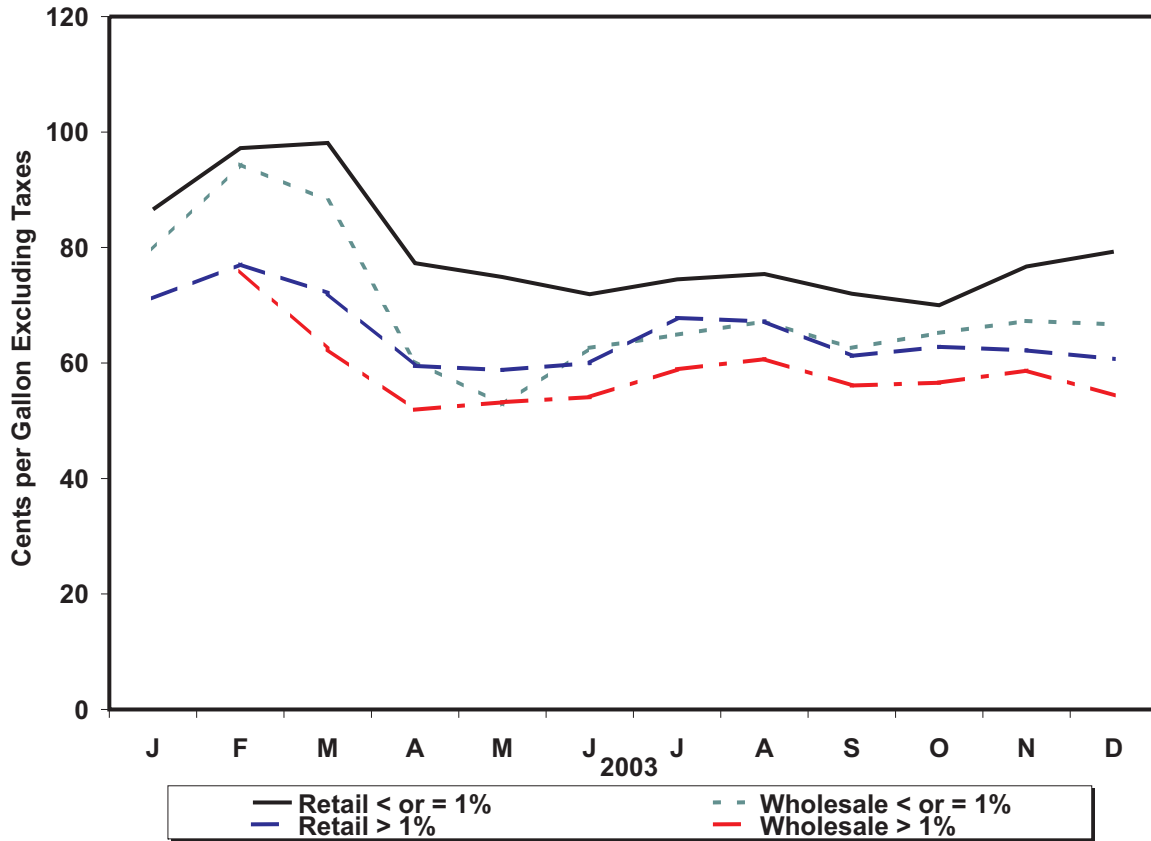
(Cents per Gallon Excluding Taxes)

Year Month	Sulfur Less Than or Equal to 1 Percent		Sulfur Greater Than 1 Percent		Average	
	Sales to End Users	Sales for Resale	Sales to End Users	Sales for Resale	Sales to End Users	Sales for Resale
1978	31.4	29.3	27.5	24.5	29.8	26.3
1979	46.8	45.0	38.9	36.6	43.6	39.9
1980	67.5	60.8	52.3	47.9	60.7	52.8
1981	82.9	74.8	67.3	62.2	75.6	66.3
1982	74.7	69.5	61.1	57.2	67.6	61.2
1983	69.5	64.3	61.1	59.1	65.1	60.9
1984	72.0	68.5	65.9	63.9	68.7	65.4
1985	64.4	61.0	58.2	56.0	61.0	57.7
1986	37.2	32.8	31.7	28.9	34.3	30.5
1987	44.7	41.2	39.6	36.2	42.3	38.5
1988	37.2	33.3	30.0	27.1	33.4	30.0
1989	43.6	40.7	34.4	33.1	38.5	36.0
1990	50.5	47.2	40.0	37.2	44.4	41.3
1991	40.2	36.4	30.6	29.2	34.0	31.4
1992	38.9	35.1	31.2	28.6	33.6	30.8
1993	39.7	33.7	30.3	25.6	33.7	29.3
1994	40.1	34.5	33.0	28.7	35.2	31.7
1995	43.6	38.3	37.7	33.8	39.2	36.3
1996	52.6	45.6	43.3	38.9	45.5	42.0
1997	48.8	41.5	40.3	36.6	42.3	38.7
1998	35.4	29.9	28.7	26.9	30.5	28.0
1999	40.5	38.2	36.2	32.9	37.4	35.4
2000	70.8	62.7	56.6	51.2	60.2	56.6
2001						
January	74.0	64.6	55.9	48.5	61.5	56.4
February	69.7	62.5	55.1	49.5	59.5	55.9
March	66.6	57.6	52.9	47.8	57.1	51.8
April	64.0	57.5	48.9	41.8	53.0	48.3
May	63.9	58.4	50.2	44.2	53.5	50.3
June	64.1	53.0	49.0	42.4	52.4	47.9
July	63.2	50.0	47.2	42.2	51.5	46.3
August	59.7	50.4	48.0	41.3	51.0	45.7
September	62.2	51.2	51.2	44.9	53.3	48.9
October	59.2	44.8	46.6	40.0	49.2	42.4
November	52.3	40.5	40.2	31.9	42.8	36.9
December	51.2	40.0	39.6	30.7	42.0	36.3
2001	64.2	52.3	49.2	42.8	53.1	47.6
2002						
January	51.8	40.4	41.6	33.7	44.2	38.2
February	52.2	37.1	40.9	33.7	43.3	35.9
March	53.5	46.0	48.3	40.5	49.7	43.7
April	59.4	53.8	55.0	48.0	56.0	51.2
May	63.5	56.3	56.6	52.1	58.1	54.5
June	61.4	53.5	57.2	53.3	58.2	53.4
July	63.2	55.7	56.8	50.9	58.6	53.7
August	67.4	60.6	59.2	55.8	61.4	58.4
September	67.8	60.1	62.6	56.8	63.8	58.7
October	72.7	65.1	63.7	54.5	65.8	60.7
November	73.6	59.1	54.8	58.2	60.1	58.7
December	73.9	67.6	56.6	59.7	62.0	64.1
2002	64.0	54.6	54.4	50.8	56.9	53.0
2003						
January	86.6	79.7	71.2	NA	75.4	73.1
February	97.2	94.4	77.1	76.0	83.9	87.3
March	98.1	88.1	72.1	62.4	81.1	77.4
April	77.3	60.3	59.5	51.9	64.3	56.9
May	74.9	62.8	58.8	53.2	61.9	57.2
June	71.9	62.6	60.0	54.1	63.9	58.0
July	74.5	64.9	67.8	58.9	70.1	61.7
August	75.4	67.2	67.2	60.7	69.8	63.4
September	72.0	62.6	61.2	56.1	64.6	58.6
October	70.7	65.2	62.8	56.6	65.2	60.1
November	76.7	67.3	62.2	58.7	66.7	62.7
December	79.3	66.7	60.7	54.5	66.8	62.3
2003	80.4	72.8	65.1	58.8	69.8	66.1

NA = Not available.

Sources: Energy Information Administration Form EIA-782A, "Refiners'/Gas Plant Operators' Monthly Petroleum Product Sales Report," January 1983 forward; Form EIA-460, "Petroleum Industry Monthly Report for Product Prices," source for backcast estimates prior to January 1983.

Figure 7. U.S. Refiner Residual Fuel Oil Prices and Volumes



Source: Energy Information Administration, Form EIA-782A, "Refiners' / Gas Plant Operators' Monthly Petroleum Product Sales Report."

Table 20. U.S. Refiner Residual Fuel Oil Volumes
(Million Gallons per Day)

Year Month	Sulfur Less Than or Equal to 1 Percent		Sulfur Greater Than 1 Percent		Total	
	Sales to End Users	Sales for Resale	Sales to End Users	Sales for Resale	Sales to End Users	Sales for Resale
1983	13.4	7.2	14.9	12.9	28.3	20.2
1984	15.1	6.7	17.8	14.6	32.9	21.3
1985	11.4	7.0	13.8	12.9	25.2	19.9
1986	15.2	7.9	16.4	10.7	31.6	18.6
1987	15.1	7.8	13.9	9.1	29.0	16.9
1988	14.2	8.7	15.9	10.3	30.2	18.9
1989	13.4	7.9	17.0	13.1	30.4	21.0
1990	11.1	7.4	14.9	10.5	25.9	17.9
1991	8.6	5.6	15.5	12.2	24.0	17.8
1992	7.1	5.2	15.3	10.0	22.4	15.2
1993	6.2	5.7	11.1	6.9	17.2	12.6
1994	4.2	6.6	9.3	6.2	13.5	12.8
1995	2.9	7.7	8.7	5.9	11.6	13.6
1996	3.1	6.3	9.8	7.4	12.9	13.8
1997	3.2	4.8	10.3	6.7	13.4	11.5
1998	3.9	5.7	10.5	9.6	14.4	15.4
1999	3.9	5.3	10.0	6.2	13.9	11.5
2000	3.3	4.9	9.8	5.6	13.1	10.5
2001						
January	6.4	5.4	14.2	5.7	20.6	11.1
February	5.2	6.3	12.1	6.5	17.3	12.8
March	5.0	4.5	11.2	6.5	16.2	11.0
April	4.6	3.9	12.1	5.5	16.8	9.4
May	4.3	4.9	13.6	6.4	17.9	11.3
June	3.3	5.6	11.3	5.1	14.6	10.7
July	3.7	6.4	10.0	5.6	13.7	12.0
August	3.5	4.6	10.1	4.9	13.6	9.5
September	2.4	4.7	10.2	2.7	12.6	7.5
October	2.3	4.4	8.8	4.6	11.1	9.0
November	2.5	5.1	9.1	3.6	11.6	8.8
December	2.5	6.4	9.3	4.2	11.7	10.6
2001	3.8	5.2	11.0	5.1	14.8	10.3
2002						
January	2.7	5.5	7.8	2.7	10.5	8.2
February	2.3	4.9	8.5	2.6	10.8	7.5
March	2.7	5.1	7.3	3.6	10.0	8.6
April	2.3	5.4	7.9	4.3	10.2	9.7
May	2.0	5.5	7.4	4.2	9.4	9.8
June	2.6	5.1	7.8	4.0	10.4	9.1
July	2.7	5.1	6.9	3.7	9.6	8.7
August	2.8	5.2	7.7	4.4	10.5	9.6
September	2.3	4.2	7.6	3.1	9.9	7.4
October	2.3	4.9	7.4	3.5	9.7	8.4
November	3.3	5.1	8.4	3.8	11.7	8.8
December	3.9	5.3	8.8	4.2	12.7	9.5
2002	2.7	5.1	7.8	3.7	10.4	8.8
2003						
January	3.1	5.1	8.3	NA	11.4	8.6
February	4.1	4.7	8.1	2.9	12.2	7.6
March	4.2	5.6	7.9	3.9	12.1	9.5
April	3.0	3.7	7.9	2.6	10.9	6.3
May	2.0	2.5	8.4	3.5	10.4	6.0
June	3.9	2.6	8.0	3.0	11.9	5.6
July	3.7	2.2	6.8	2.5	10.5	4.6
August	3.1	2.6	6.7	3.8	9.8	6.5
September	3.2	2.1	7.1	3.4	10.3	5.5
October	3.0	2.0	6.7	2.9	9.7	4.9
November	2.5	2.3	5.7	2.7	8.2	4.9
December	3.5	6.2	7.3	3.6	10.8	9.8
2003	3.3	3.5	7.4	3.2	10.7	6.7

NA = Not available.

Note: Totals may not equal the sum of the components due to rounding.

Source: Energy Information Administration Form EIA-782A, "Refiners/Gas Plant Operators' Monthly Petroleum Product Sales Report."