

Section 1. Energy Overview

Energy production during July 2004 totaled 6.0 quadrillion Btu, a 1.5-percent increase compared with the level of production during July 2003. Production of conventional hydroelectric power decreased 5.6 percent; coal increased 3.9 percent; crude oil decreased 2.2 percent; and natural gas (dry) decreased 0.2 percent, compared with the level of production during July 2003.

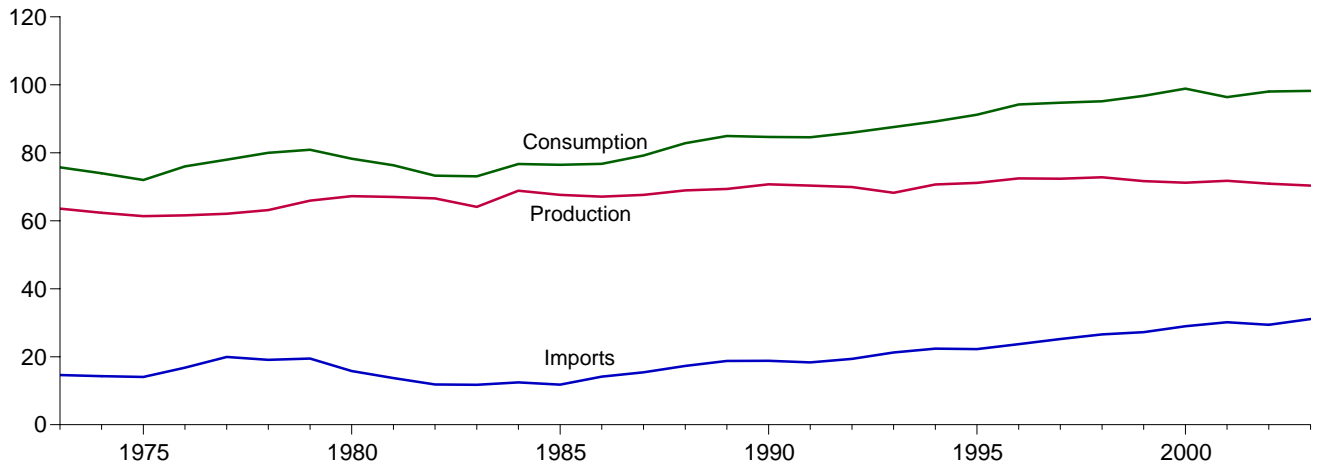
Energy consumption during July 2004 totaled 8.4 quadrillion Btu, a 0.8-percent increase compared with the level of consumption during July 2003. Consumption of nuclear

electric power increased 3.3 percent; petroleum increased 2.5 percent; natural gas decreased 1.9 percent; and coal decreased 0.4 percent, compared with the level 1 year earlier.

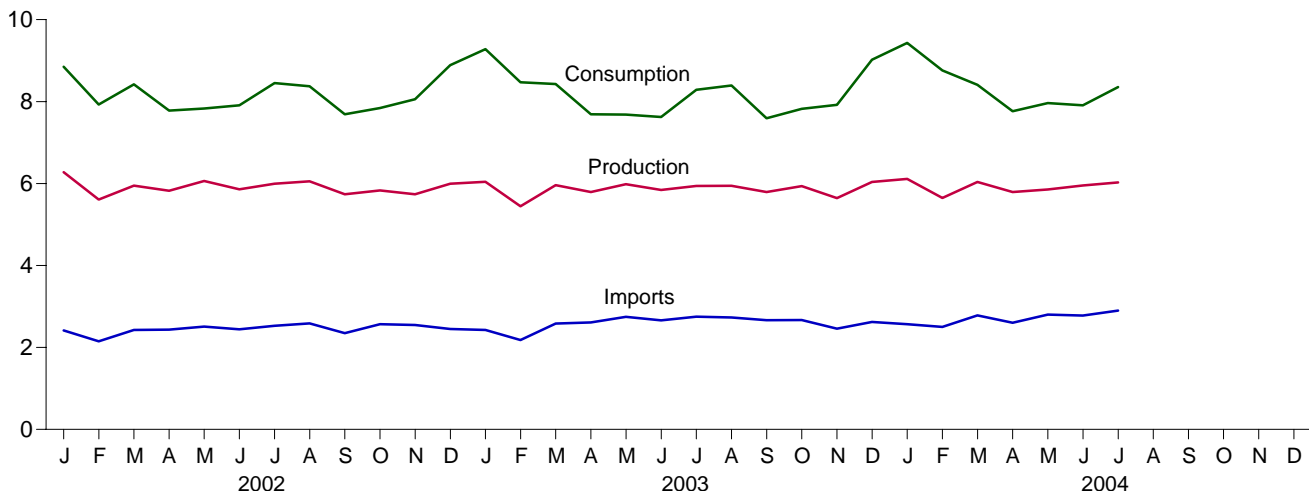
Net imports of energy during July 2004 totaled 2.5 quadrillion Btu, 5.4 percent above the level of net imports 1 year earlier. Petroleum products net imports increased 17.3 percent; coal net exports decreased 11.4 percent; natural gas net imports increased 8.3 percent; and crude oil net imports increased 2.5 percent, compared with the level in July 2003.

Figure 1.1 Energy Overview
(Quadrillion Btu)

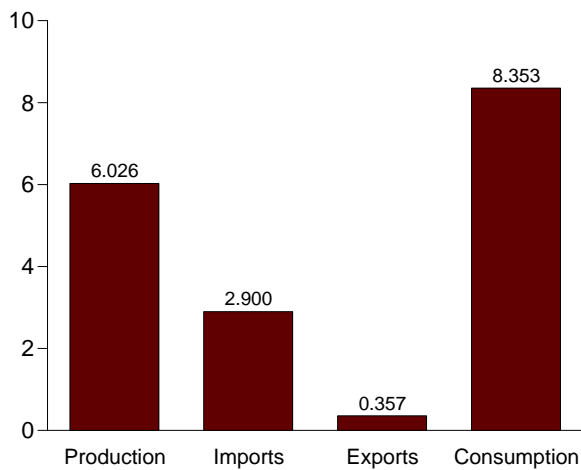
Consumption, Production, and Imports, 1973-2003



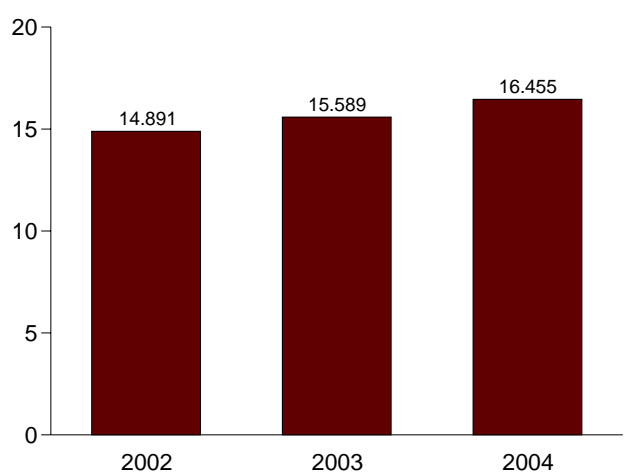
Consumption, Production, and Imports, Monthly



Overview, July 2004



Net Imports, January-July



Note: Because vertical scales differ, graphs should not be compared.
 Web Page: <http://www.eia.doe.gov/emeu/mer/overview.html>.
 Sources: Tables 1.1 and 1.4.

Table 1.1 Energy Overview
(Quadrillion Btu)

	Production	Imports	Exports	Adjustments ^a	Consumption
1973 Total	63.585	14.613	2.033	-0.456	75.708
1974 Total	62.372	14.304	2.203	-.482	73.991
1975 Total	61.357	14.032	2.323	-1.067	71.999
1976 Total	61.602	16.760	2.172	-.178	76.012
1977 Total	62.052	19.948	2.052	-1.948	78.000
1978 Total	63.137	19.106	1.920	-.337	79.986
1979 Total	65.948	19.460	2.855	-1.649	80.903
1980 Total	67.241	15.796	3.695	-1.054	78.289
1981 Total	67.007	13.719	4.307	-.077	76.342
1982 Total	66.574	11.861	4.608	-.575	73.253
1983 Total	64.106	11.752	3.693	.935	73.101
1984 Total	68.832	12.471	3.786	-.781	76.736
1985 Total	67.647	11.781	4.196	1.238	76.469
1986 Total	67.087	14.151	4.021	-.435	76.782
1987 Total	67.608	15.398	3.812	-.032	79.225
1988 Total	68.951	17.296	4.366	.964	82.844
1989 Total	69.364	18.766	4.661	1.487	84.957
1990 Total	70.729	18.817	4.752	-.126	84.668
1991 Total	70.362	18.335	5.141	1.040	84.595
1992 Total	69.933	19.372	4.937	1.581	85.949
1993 Total	68.260	21.273	4.258	2.303	87.578
1994 Total	70.676	22.390	4.061	.243	89.248
1995 Total	71.156	22.260	4.511	2.315	91.221
1996 Total	72.472	23.702	4.633	2.683	94.224
1997 Total	72.389	25.215	4.514	1.637	94.727
1998 Total	72.787	26.581	4.299	.078	95.146
1999 Total	71.652	27.252	3.715	1.585	96.774
2000 Total	71.218	28.973	4.006	2.720	98.905
2001 Total	71.792	30.157	3.770	-1.800	96.378
2002 January	6.278	2.414	.292	.449	8.849
February	5.607	2.148	.290	.463	7.928
March	5.947	2.427	.266	.313	8.421
April	5.826	2.434	.292	-.186	7.782
May	6.063	2.510	.294	-.449	7.830
June	5.858	2.442	.308	-.082	7.910
July	5.997	2.528	.270	.197	8.452
August	6.052	2.588	.344	.077	8.374
September	5.739	2.349	.301	-.096	7.691
October	5.833	2.566	.333	-.223	7.843
November	5.736	2.550	.313	.083	8.057
December	5.995	2.450	.359	.802	8.888
Total	70.933	29.406	3.661	1.348	98.026
2003 January	6.041	2.428	.377	R 1.189	R 9.281
February	5.445	2.180	.300	1.145	8.470
March	5.959	2.584	.316	.202	8.429
April	5.794	2.612	.333	R -.384	R 7.688
May	5.984	2.746	.357	R -.690	R 7.684
June	5.844	2.660	.351	R -.528	R 7.625
July	5.939	2.751	.339	R -.064	R 8.288
August	5.946	2.730	.334	R .053	R 8.395
September	5.792	2.665	.325	R -.537	R 7.594
October	5.938	2.668	.349	R -.433	R 7.824
November	5.645	2.457	.338	R .155	R 7.920
December	6.040	2.623	.345	R .702	R 9.021
Total	70.367	31.107	4.065	R .810	R 98.219
2004 January	6.112	2.567	.286	R 1.039	9.432
February	5.647	2.502	.298	.908	8.759
March	6.038	2.780	.366	R -.042	8.410
April	R 5.791	R 2.601	.407	R -.222	R 7.763
May	R 5.857	R 2.802	.381	R -.313	R 7.965
June	R 5.955	R 2.777	.378	R -.445	R 7.908
July	6.026	2.900	.357	-.216	8.353
7-Month Total	41.425	18.930	2.474	.709	58.589
2003 7-Month Total	41.006	17.963	2.374	.870	57.465
2002 7-Month Total	41.576	16.903	2.012	.705	57.173

^a A balancing item. Includes stock changes, losses, gains, miscellaneous blending components, and unaccounted-for supply.
R=Revised.

Notes: • For definitions, see Notes 1 through 4 at end of section.
• Totals may not equal sum of components due to independent rounding.

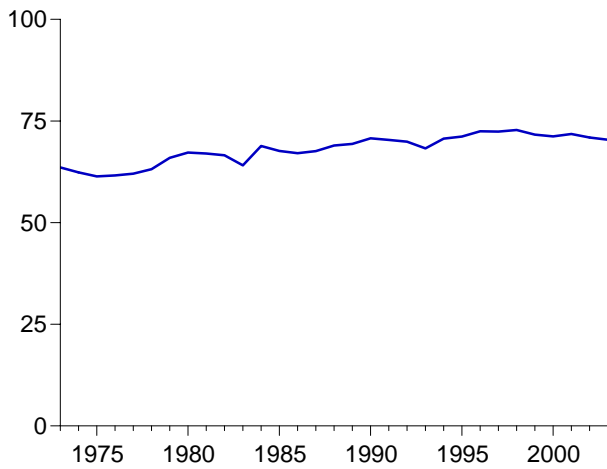
• Geographic coverage is the 50 States and the District of Columbia.

Web Page: <http://www.eia.doe.gov/emeu/mer/overview.html>.

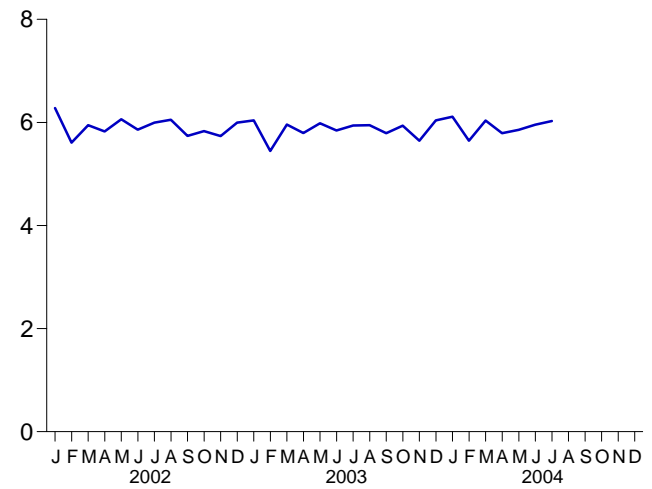
Sources: • **Production:** Table 1.2. • **Consumption:** Table 1.3. • **Imports and Exports:** Tables 3.1b, 4.3, 6.1, 7.1, A2-A6, and Section 2, "Energy Consumption Notes and Sources," Note 5.

Figure 1.2 Energy Production
(Quadrillion Btu)

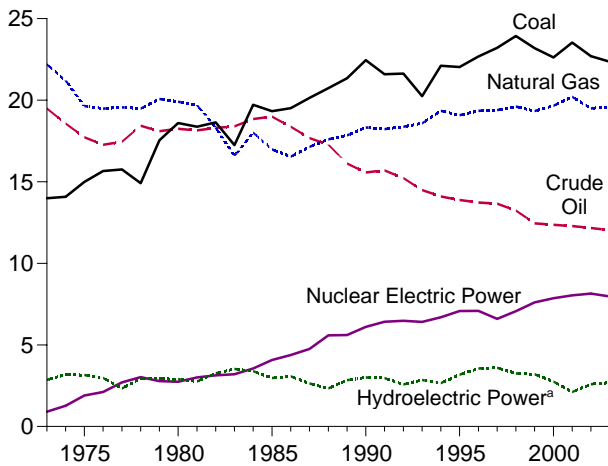
Total, 1973-2003



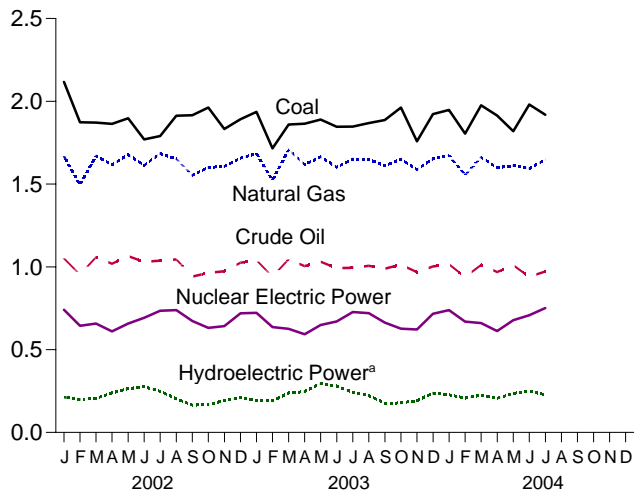
Total, Monthly



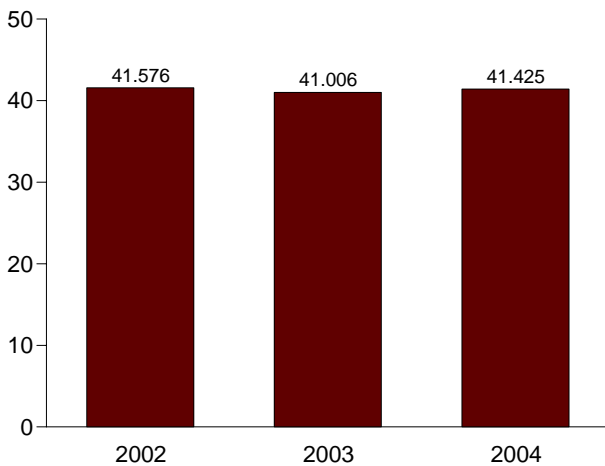
By Major Sources, 1973-2003



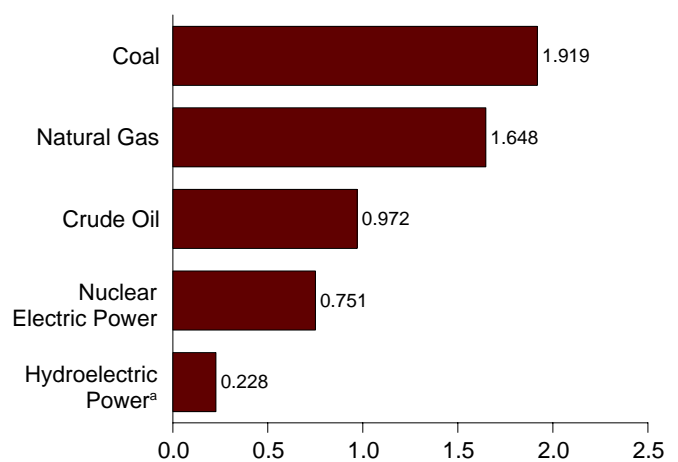
By Major Sources, Monthly



Total, January-July



By Major Sources, July 2004



^aConventional and pumped storage hydroelectric power.
Note: Because vertical scales differ, graphs should not be compared.

Web Page: <http://www.eia.doe.gov/emeu/mer/overview.html>.
Source: Table 1.2.

Table 1.2 Energy Production by Source
(Quadrillion Btu)

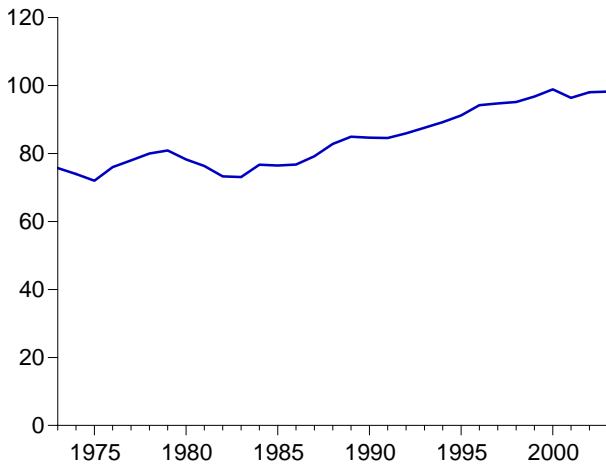
	Fossil Fuels					Nuclear Electric Power	Hydro-electric Pumped Storage ^c	Renewable Energy ^a					Total
	Coal	Natural Gas (Dry)	Crude Oil ^b	Natural Gas Plant Liquids	Total			Conventional Hydroelectric Power	Wood, Waste, Alcohol ^d	Geo-thermal	Solar and Wind	Total	
1973 Total	13.992	22.187	19.493	2.569	58.241	0.910	(e)	2.861	1.529	0.043	NA	4.433	63.585
1974 Total	14.074	21.210	18.575	2.471	56.331	1.272	(e)	3.177	1.540	.053	NA	4.769	62.372
1975 Total	14.989	19.640	17.729	2.374	54.733	1.900	(e)	3.155	1.499	.070	NA	4.723	61.357
1976 Total	15.654	19.480	17.262	2.327	54.723	2.111	(e)	2.976	1.713	.078	NA	4.768	61.602
1977 Total	15.755	19.565	17.454	2.327	55.101	2.702	(e)	2.333	1.838	.077	NA	4.249	62.052
1978 Total	14.910	19.485	18.434	2.245	55.074	3.024	(e)	2.937	2.038	.064	NA	5.039	63.137
1979 Total	17.540	20.076	18.104	2.286	58.006	2.776	(e)	2.931	2.152	.084	NA	5.166	65.948
1980 Total	18.598	19.908	18.249	2.254	59.008	2.739	(e)	2.900	2.485	.110	NA	5.494	67.241
1981 Total	18.377	19.699	18.146	2.307	58.529	3.008	(e)	2.758	2.590	.123	NA	5.471	67.007
1982 Total	18.639	18.319	18.309	2.191	57.458	3.131	(e)	3.266	2.615	.105	NA	5.985	66.574
1983 Total	17.247	16.593	18.392	2.184	54.416	3.203	(e)	3.527	2.831	.129	(s)	6.488	64.106
1984 Total	19.719	18.008	18.848	2.274	58.849	3.553	(e)	3.386	2.880	.165	(s)	6.431	68.832
1985 Total	19.325	16.980	18.992	2.241	57.539	4.076	(e)	2.970	2.864	.198	(s)	6.033	67.647
1986 Total	19.509	16.541	18.376	2.149	56.575	4.380	(e)	3.071	2.841	.219	(s)	6.132	67.087
1987 Total	20.141	17.136	17.675	2.215	57.167	4.754	(e)	2.635	2.823	.229	(s)	5.687	67.608
1988 Total	20.738	17.599	17.279	2.260	57.875	5.587	(e)	2.334	2.937	.217	(s)	5.489	68.951
1989 Total	21.346	17.847	16.117	2.158	57.468	5.602	(e)	2.837	3.062	.317	.077	6.294	69.364
1990 Total	22.456	18.326	15.571	2.175	58.529	6.104	-0.36	3.046	2.662	.336	.089	6.133	70.729
1991 Total	21.594	18.229	15.701	2.306	57.829	6.422	-0.47	3.016	2.702	.346	.093	6.158	70.362
1992 Total	21.629	18.375	15.223	2.363	57.590	6.479	-0.43	2.617	2.847	.349	.094	5.907	69.933
1993 Total	20.249	18.584	14.494	2.408	55.736	6.410	-0.42	2.892	2.803	.364	.097	6.156	68.260
1994 Total	22.111	19.348	14.103	2.391	57.952	6.694	-0.35	2.683	2.939	.338	.104	6.065	70.676
1995 Total	22.029	19.082	13.887	2.442	57.440	7.075	-0.28	3.205	3.068	.294	.102	6.669	71.156
1996 Total	22.684	19.344	13.723	2.530	58.281	7.087	-0.32	3.590	3.127	.316	.104	7.137	72.472
1997 Total	23.211	19.394	13.658	2.495	58.758	6.597	-0.41	3.640	3.006	.325	.104	7.075	72.389
1998 Total	23.935	19.613	13.235	2.420	59.204	7.068	-0.46	3.297	2.835	.328	.101	6.561	72.787
1999 Total	23.186	19.341	12.451	2.528	57.505	7.610	-0.62	3.268	2.885	.331	.115	6.599	71.652
2000 Total	22.623	19.662	12.358	2.611	57.254	7.862	-0.57	2.811	2.907	.317	.123	6.158	71.218
2001 Total	23.529	20.205	12.282	2.547	58.563	8.033	-0.90	2.201	2.640	.311	.134	5.286	71.792
2002 January	2.117	1.669	1.051	.211	5.048	.740	-0.08	.221	.234	.029	.013	.497	6.278
February	1.873	1.496	.954	.198	4.521	.644	-0.06	.204	.207	.026	.012	.449	5.607
March	1.871	1.669	1.058	.220	4.818	.658	-0.07	.213	.223	.028	.014	.478	5.947
April	1.864	1.617	1.019	.215	4.716	.610	-0.06	.245	.220	.025	.016	.506	5.826
May	1.897	1.677	1.065	.224	4.863	.658	-0.05	.270	.233	.028	.016	.547	6.063
June	1.770	1.613	1.029	.209	4.622	.693	-0.09	.285	.224	.026	.017	.552	5.858
July	1.791	1.684	1.037	.213	4.725	.735	-0.10	.258	.246	.029	.015	.547	5.997
August	1.912	1.652	1.045	.224	4.833	.739	-0.09	.213	.233	.028	.016	.490	6.052
September	1.916	1.554	.942	.212	4.624	.673	-0.08	.173	.238	.027	.013	.450	5.739
October	1.962	1.601	.964	.217	4.745	.631	-0.07	.174	.249	.028	.013	.464	5.833
November	1.833	1.607	.974	.212	4.625	.642	-0.07	.200	.238	.027	.012	.476	5.736
December	1.891	1.657	1.025	.203	4.777	.719	-0.07	.219	.246	.028	.013	.506	5.995
Total	22.698	19.495	12.163	2.559	56.915	8.143	-0.88	2.675	2.791	.328	.169	5.963	70.933
2003 January	1.936	E 1.684	E 1.040	.204	4.864	.722	-0.08	.199	.225	.027	.011	.462	6.041
February	1.716	E 1.525	E .940	.190	4.371	.636	-0.08	.198	.212	.025	.012	.446	5.445
March	1.859	E 1.706	E 1.046	.200	4.812	.626	-0.08	.246	.241	.027	.016	.529	5.959
April	1.865	E 1.618	E 1.005	.191	4.678	.593	-0.06	.253	.234	.025	.016	.528	5.794
May	1.890	E 1.665	E 1.031	.181	4.767	.649	-0.06	.302	.232	.025	.015	.574	5.984
June	1.846	E 1.602	E .992	.177	4.617	.670	-0.08	.288	.235	.026	.015	.564	5.844
July	1.847	E 1.651	E .994	.191	4.682	.727	-0.08	.249	.247	.026	.015	.537	5.939
August	1.869	E 1.648	E 1.006	.197	4.721	.721	-0.08	.231	.243	.026	.013	.513	5.946
September	1.887	E 1.612	E .989	.198	4.685	.664	-0.08	.184	.227	.026	.014	.451	5.792
October	1.962	E 1.650	E 1.013	.211	4.836	.627	-0.06	.185	.256	.026	.014	.482	5.938
November	1.758	E 1.588	E .968	.206	4.519	.622	-0.07	.199	.270	.026	.015	.511	5.645
December	1.923	E 1.654	E 1.003	.200	4.779	.716	-0.07	.244	.263	.029	.016	.552	6.040
Total	22.358	E 19.602	E 12.026	2.346	56.332	7.973	-0.88	2.779	2.885	.314	.172	6.150	70.367
2004 January	1.948	E 1.673	E 1.015	.209	4.845	.739	-0.08	.235	.257	.030	.014	.536	6.112
February	1.804	E 1.554	E .939	.195	4.493	.669	-0.06	.214	.235	.028	.015	.491	5.647
March	1.975	E 1.662	E 1.011	.212	4.861	.661	-0.07	.233	.245	.028	.017	.524	6.038
April	1.914	RE 1.599	E .969	.200	R 4.682	.612	-0.07	.213	.246	.027	.018	.504	R 5.791
May	1.820	RE 1.611	E 1.009	.208	R 4.648	.678	-0.07	.242	.245	.028	.022	.538	R 5.857
June	1.981	RE 1.594	E .940	.195	R 4.710	.708	-0.07	.255	R .241	.028	.019	R .544	R 5.955
July	1.919	E 1.648	E .972	.210	4.749	.751	-0.07	.235	.252	.029	.017	.533	6.026
7-Month Total	13.362	E 11.341	E 6.854	1.429	32.986	4.818	-0.48	1.627	1.722	.198	.123	3.669	41.425
2003 7-Month Total	12.960	E 11.450	E 7.047	1.335	32.792	4.623	-0.51	1.736	1.625	.181	.099	3.642	41.006
2002 7-Month Total	13.183	11.424	7.214	1.491	33.312	4.738	-0.51	1.696	1.587	.191	.104	3.577	41.576

a End-use consumption and electricity net generation.
b Includes lease condensate.
c Pumped storage facility production minus energy used for pumping.
d "Alcohol" is ethanol blended into motor gasoline.
e Included in "Conventional Hydroelectric Power."
R=Revised. E=Estimate. NA=Not available. (s)=Less than +0.5 trillion Btu and greater than -0.5 trillion Btu.
Notes: • See Note 1 at end of section. • Totals may not equal sum of

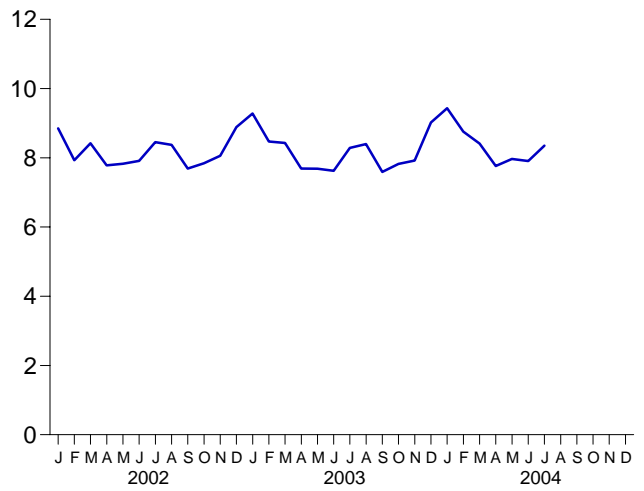
components due to independent rounding. • Geographic coverage is the 50 States and the District of Columbia.
Web Page: <http://www.eia.doe.gov/emeu/mer/overview.html>.
Sources: • Coal: Tables 6.1 and A5. • Natural Gas (Dry): Tables 4.1 and A4. • Crude Oil and Natural Gas Plant Liquids: Tables 3.1a and A2. • Nuclear Electric Power and Hydroelectric Pumped Storage: Tables 7.2a and A6. • Renewable Energy: Table 10.1.

Figure 1.3 Energy Consumption
(Quadrillion Btu)

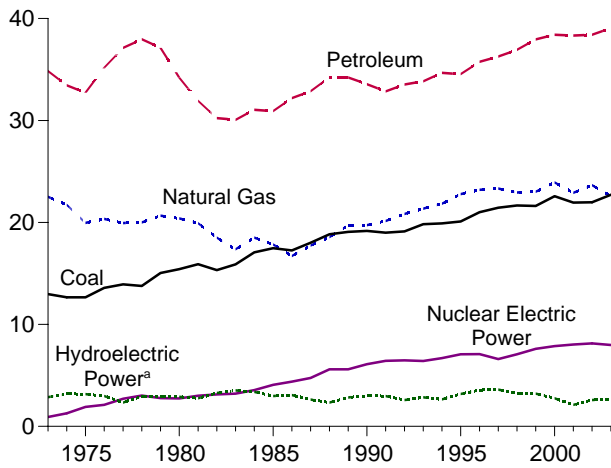
Total, 1973-2003



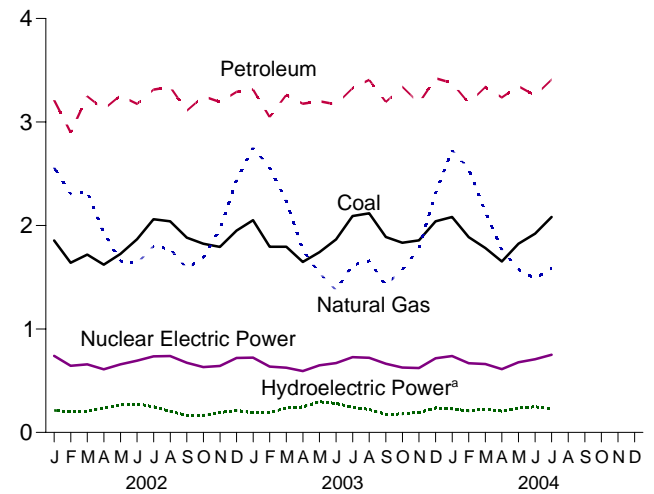
Total, Monthly



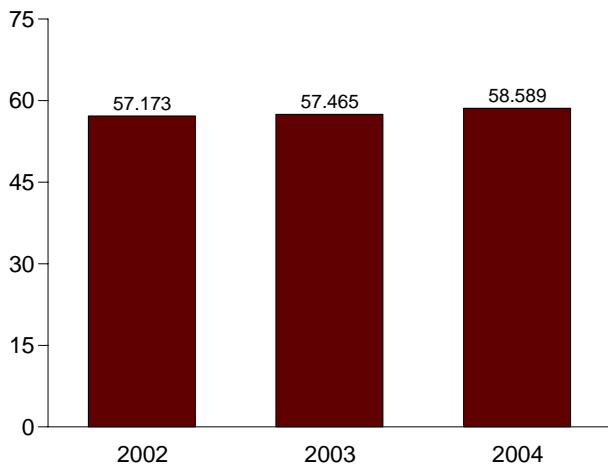
By Major Sources, 1973-2003



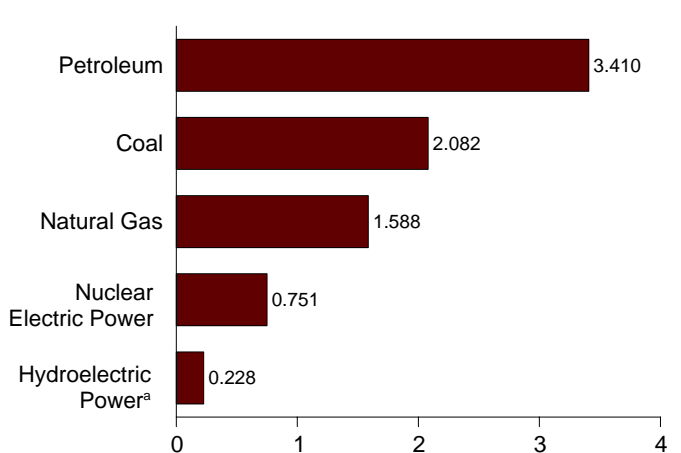
By Major Sources, Monthly



Total, January-July



By Major Sources, July 2004



^aConventional and pumped storage hydroelectric power.
Note: Because vertical scales differ, graphs should not be compared.

Web Page: <http://www.eia.doe.gov/emeu/mer/overview.html>.
Source: Table 1.3.

Table 1.3 Energy Consumption by Source
(Quadrillion Btu)

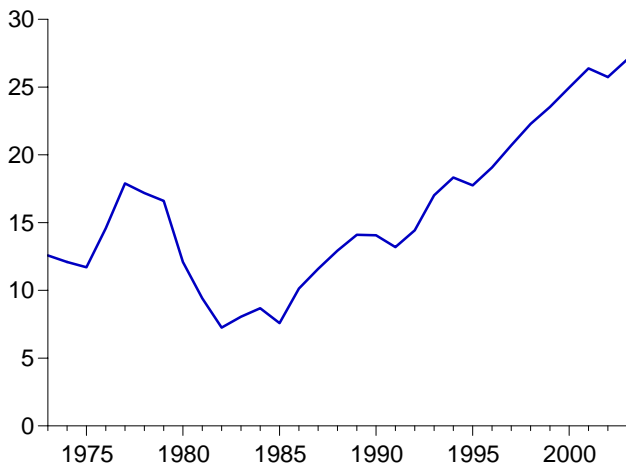
	Fossil Fuels				Nuclear Electric Power	Hydro-electric Pumped Storage ^f	Renewable Energy ^a					Total ^{d,h}
	Coal	Natural Gas ^b	Petro-leum ^{c,d}	Total ^e			Conventional Hydroelectric Power	Wood, Waste, Alcohol ^{d,g}	Geo-thermal	Solar and Wind	Total	
1973 Total	12.971	22.512	34.840	70.316	0.910	()	2.861	1.529	0.043	NA	4.433	75.708
1974 Total	12.663	21.732	33.455	67.906	1.272	()	3.177	1.540	.053	NA	4.769	73.991
1975 Total	12.663	19.948	32.731	65.355	1.900	()	3.155	1.499	.070	NA	4.723	71.999
1976 Total	13.584	20.345	35.175	69.104	2.111	()	2.976	1.713	.078	NA	4.768	76.012
1977 Total	13.922	19.931	37.122	70.989	2.702	()	2.333	1.838	.077	NA	4.249	78.000
1978 Total	13.766	20.000	37.965	71.856	3.024	()	2.937	2.038	.064	NA	5.039	79.986
1979 Total	15.040	20.666	37.123	72.892	2.776	()	2.931	2.152	.084	NA	5.166	80.903
1980 Total	15.423	20.394	34.202	69.984	2.739	()	2.900	2.485	.110	NA	5.494	78.289
1981 Total	15.908	19.928	31.931	67.750	3.008	()	2.758	2.590	.123	NA	5.471	76.342
1982 Total	15.322	18.505	30.231	64.036	3.131	()	3.266	2.615	.105	NA	5.985	73.253
1983 Total	15.894	17.357	30.054	63.290	3.203	()	3.527	2.831	.129	(s)	6.488	73.101
1984 Total	17.071	18.507	31.051	66.617	3.553	(s)	3.386	2.880	.165	(s)	6.431	76.736
1985 Total	17.478	17.834	30.922	66.221	4.076	()	2.970	2.864	.198	(s)	6.033	76.469
1986 Total	17.260	16.708	32.196	66.148	4.380	()	3.071	2.841	.219	(s)	6.132	76.782
1987 Total	18.008	17.744	32.865	68.626	4.754	()	2.635	2.823	.229	(s)	5.687	79.225
1988 Total	18.846	18.552	34.222	71.660	5.587	()	2.334	2.937	.217	(s)	5.489	82.844
1989 Total	19.070	19.712	34.211	73.023	5.602	()	2.837	3.062	.317	.077	6.294	84.957
1990 Total	19.173	19.730	33.553	72.460	6.104	-.036	3.046	2.662	.336	.089	6.133	84.668
1991 Total	18.992	20.149	32.845	71.996	6.422	-.047	3.016	2.702	.346	.093	6.158	84.595
1992 Total	19.122	20.835	33.527	73.519	6.479	-.043	2.617	2.847	.349	.094	5.907	85.949
1993 Total	19.835	21.351	33.841	75.055	6.410	-.042	2.892	2.803	.364	.097	6.156	87.578
1994 Total	19.909	21.842	34.670	76.480	6.694	-.035	2.683	2.939	.338	.104	6.065	89.248
1995 Total	20.089	22.784	34.553	77.488	7.075	-.028	3.205	3.068	.294	.102	6.669	91.221
1996 Total	21.002	23.197	35.757	79.979	7.087	-.032	3.590	3.127	.316	.104	7.137	94.224
1997 Total	21.445	23.328	36.266	81.086	6.597	-.041	3.640	3.006	.325	.104	7.075	94.727
1998 Total	21.656	22.936	36.934	81.592	7.068	-.046	3.297	2.835	.328	.101	6.561	95.146
1999 Total	21.623	23.010	37.960	82.650	7.610	-.062	3.268	2.885	.331	.115	6.599	96.774
2000 Total	22.580	23.916	38.404	84.965	7.862	-.057	2.811	2.907	.317	.123	6.158	98.905
2001 Total	21.952	22.906	38.333	83.221	8.033	-.090	2.201	2.640	.311	.134	5.286	96.378
2002 January	1.855	2.558	3.211	7.623	.740	-.008	.221	.234	.029	.013	.497	8.849
February	1.640	2.306	2.899	6.847	.644	-.006	.204	.207	.026	.012	.449	7.928
March	1.719	2.323	3.247	7.298	.658	-.007	.213	.223	.028	.014	.478	8.421
April	1.622	1.934	3.123	6.677	.610	-.006	.245	.220	.025	.016	.506	7.782
May	1.724	1.657	3.256	6.641	.658	-.005	.270	.233	.028	.016	.547	7.830
June	1.868	1.635	3.174	6.680	.693	-.009	.285	.224	.026	.017	.552	7.910
July	2.061	1.798	3.313	7.182	.735	-.010	.258	.246	.029	.015	.547	8.452
August	2.041	1.773	3.337	7.158	.739	-.009	.213	.233	.028	.016	.490	8.374
September	1.882	1.586	3.108	6.585	.673	-.008	.173	.238	.027	.013	.450	7.691
October	1.824	1.689	3.248	6.767	.631	-.007	.174	.249	.028	.013	.464	7.843
November	1.794	1.964	3.193	6.961	.642	-.007	.200	.238	.027	.012	.476	8.057
December	1.951	2.440	3.292	7.685	.719	-.007	.219	.246	.028	.013	.506	8.888
Total	21.980	23.662	38.401	84.104	8.143	-.088	2.675	2.791	.328	.169	5.963	98.026
2003 January	2.051	R 2.750	3.314	R 8.116	.722	-.008	.199	.225	.027	.011	.462	R 9.281
February	1.795	2.556	3.046	R 7.411	.636	-.008	.198	.212	.025	.012	.446	8.470
March	1.794	2.239	3.262	R 7.299	.626	-.008	.246	.241	.027	.016	.529	8.429
April	1.647	R 1.762	3.177	R 6.590	.593	-.006	.253	.234	.025	.016	.528	R 7.688
May	1.741	R 1.539	3.202	R 6.484	.649	-.006	.302	.232	.025	.015	.574	R 7.684
June	1.866	R 1.375	3.171	R 6.416	.670	-.008	.288	.235	.026	.015	.564	R 7.625
July	2.091	R 1.618	3.326	R 7.041	.727	-.008	.249	.247	.026	.015	.537	R 8.288
August	2.117	R 1.657	3.408	R 7.182	.721	-.008	.231	.243	.026	.013	.513	R 8.395
September	1.888	R 1.422	3.193	R 6.507	.664	-.008	.184	.227	.026	.014	.451	R 7.594
October	1.833	R 1.572	3.341	R 6.750	.627	-.006	.185	.256	.026	.014	.482	R 7.824
November	1.856	R 1.778	3.184	R 6.820	.622	-.007	.199	.270	.026	.015	.511	R 7.920
December	2.040	R 2.314	3.423	R 7.784	.716	-.007	.244	.263	.029	.016	.552	R 9.021
Total	22.720	R 22.583	39.047	R 84.401	7.973	-.088	2.779	2.885	.314	.172	6.150	R 98.219
2004 January	2.083	2.726	3.376	R 8.189	.739	-.008	.235	.257	.030	.014	.536	9.432
February	1.887	2.549	3.182	7.627	.669	-.006	.214	.235	.028	.015	.491	8.759
March	1.782	R 2.131	3.337	R 7.259	.661	-.007	.233	.245	.028	.017	.524	8.410
April	1.653	R 1.764	3.237	R 6.678	.612	-.007	.213	.246	.027	.018	.504	R 7.763
May	1.824	R 1.574	3.345	R 6.780	.678	-.007	.242	.245	.028	.022	.538	R 7.965
June	R 1.922	R 1.487	3.257	R 6.687	.708	-.007	.255	R .241	.028	.019	R .544	R 7.908
July	2.082	1.588	3.410	7.090	.751	-.007	.235	.252	.029	.017	.533	8.353
7-Month Total	13.232	13.819	23.146	50.310	4.818	-.048	1.627	1.722	.198	.123	3.669	58.589
2003 7-Month Total	12.986	13.840	22.499	49.357	4.623	-.051	1.736	1.625	.181	.099	3.642	57.465
2002 7-Month Total	12.489	14.211	22.223	48.948	4.738	-.051	1.696	1.587	.191	.104	3.577	57.173

^a End-use consumption and electricity net generation.
^b Natural gas, plus a small amount of supplemental gaseous fuels that cannot be identified separately.
^c Petroleum products supplied, including natural gas plant liquids and crude oil burned as fuel. Beginning in 1993, also includes ethanol blended into motor gasoline.
^d Beginning in 1993, ethanol blended into motor gasoline is included in both "Petroleum" and "Wood, Waste, Alcohol," but is counted only once in total consumption.
^e Includes coal coke net imports. See Table 1.4.
^f Pumped storage facility production minus energy used for pumping.
^g "Alcohol" is ethanol blended into motor gasoline.
^h Includes coal coke net imports and electricity net imports, which are not

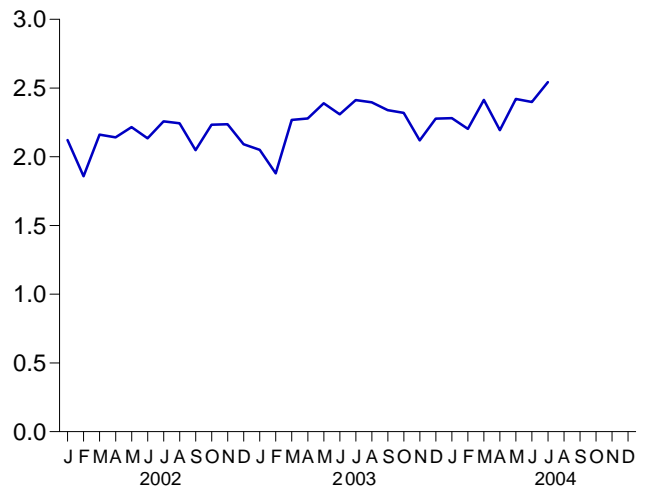
separately displayed. See Table 1.4.
ⁱ Included in conventional hydroelectric power.
R=Revised. NA=Not available. (s)=Less than +0.5 trillion Btu and greater than -0.5 trillion Btu.
Notes: • See Note 2 at end of section. • Totals may not equal sum of components due to independent rounding. • Geographic coverage is the 50 States and the District of Columbia.
Web Page: <http://www.eia.doe.gov/emeu/mer/overview.html>.
Sources: • Coal: Tables 6.1 and A5. • Natural Gas: Tables 4.1 and A4. • Petroleum: Tables 3.1a and A3. • Nuclear Electric Power and Hydroelectric Pumped Storage: Tables 7.2a and A6. • Renewable Energy: Table 10.1. • Net Imports of Coal Coke and Electricity: Table 1.4.

Figure 1.4 Energy Net Imports
(Quadrillion Btu, Except as noted)

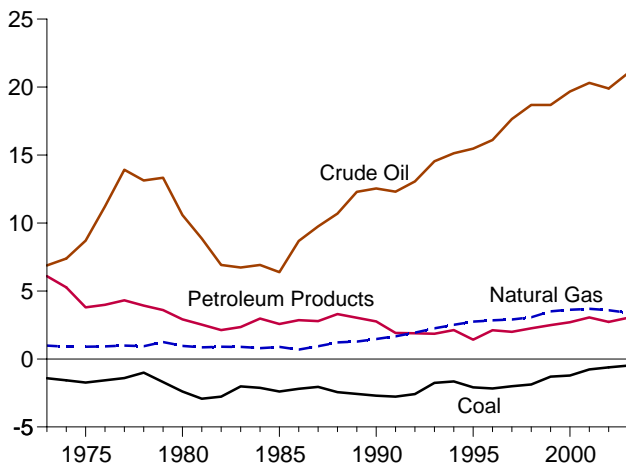
Total, 1973-2003



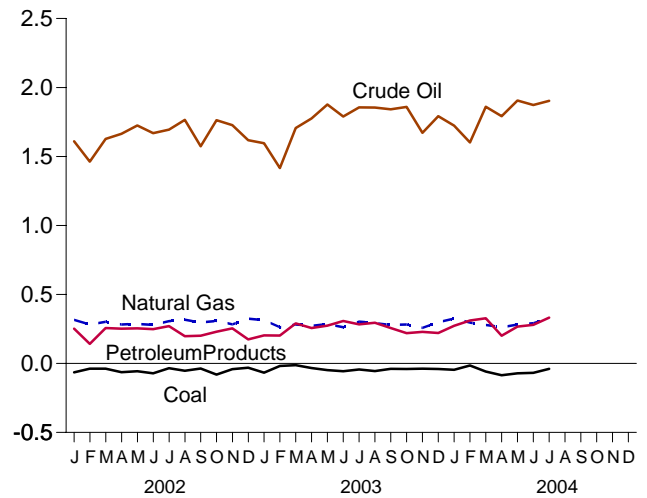
Total, Monthly



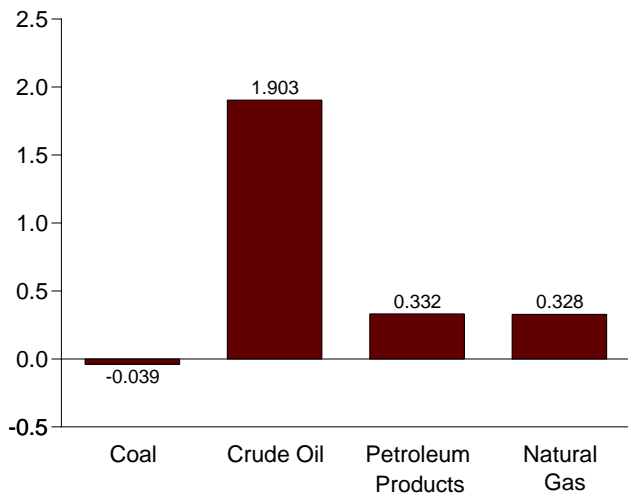
By Major Sources, 1973-2003



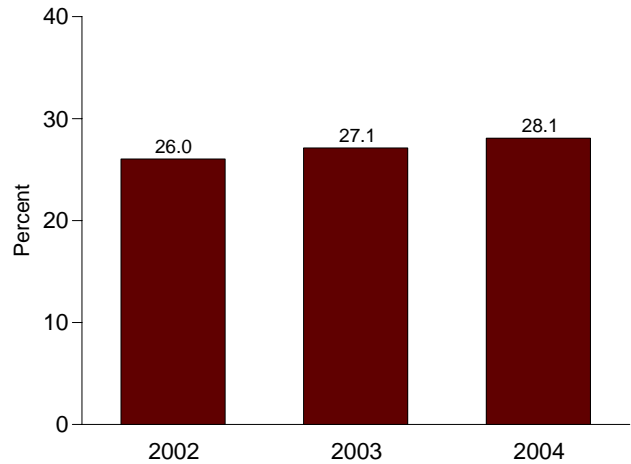
By Major Sources, Monthly



By Major Sources, July 2004



As Share of Consumption, January-July



Note: Because vertical scales differ, graphs should not be compared.
Web Page: <http://www.eia.doe.gov/emeu/mer/overview.html>.
Sources: Tables 1.3 and 1.4.

Table 1.4 Energy Net Imports by Source
(Quadrillion Btu)

	Coal	Coal Coke	Natural Gas	Crude Oil ^a	Petroleum Products ^b	Electricity	Total
1973 Total	-1.422	-0.007	0.981	6.883	6.097	0.049	12.580
1974 Total	-1.568	.056	.907	7.389	5.273	.043	12.101
1975 Total	-1.738	.014	.904	8.708	3.800	.021	11.709
1976 Total	-1.567	(s)	.922	11.221	3.982	.029	14.588
1977 Total	-1.401	.015	.981	13.921	4.321	.059	17.896
1978 Total	-1.004	.125	.941	13.125	3.932	.067	17.186
1979 Total	-1.702	.063	1.243	13.328	3.603	.069	16.605
1980 Total	-2.391	-.035	.957	10.586	2.912	.071	12.101
1981 Total	-2.918	-.016	.857	8.854	2.522	.113	9.412
1982 Total	-2.768	-.022	.898	6.917	2.128	.100	7.253
1983 Total	-2.013	-.016	.885	6.731	2.351	.121	8.059
1984 Total	-2.119	-.011	.792	6.918	2.970	.135	8.685
1985 Total	-2.389	-.013	.896	6.381	2.570	.140	7.584
1986 Total	-2.193	-.017	.686	8.676	2.855	.122	10.130
1987 Total	-2.049	.009	.937	9.748	2.784	.158	11.586
1988 Total	-2.446	.040	1.221	10.698	3.308	.108	12.929
1989 Total	-2.566	.030	1.278	12.296	3.029	.037	14.105
1990 Total	-2.705	.005	1.464	12.536	2.757	.008	14.065
1991 Total	-2.769	.010	1.666	12.308	1.912	.067	13.194
1992 Total	-2.587	.035	1.941	13.065	1.895	.087	14.435
1993 Total	-1.758	.027	2.255	14.542	1.854	.095	17.014
1994 Total	-1.657	.058	2.518	15.131	2.126	.153	18.329
1995 Total	-2.081	.061	2.745	15.469	1.422	.134	17.750
1996 Total	-2.165	.023	2.847	16.108	2.119	.137	19.069
1997 Total	-2.006	.046	2.904	17.648	1.993	.116	20.701
1998 Total	-1.874	.067	3.064	18.684	2.252	.088	22.281
1999 Total	-1.298	.058	3.500	18.686	2.493	.099	23.537
2000 Total	-1.215	.065	3.623	19.676	2.701	.115	24.967
2001 Total	-.771	.029	3.691	20.305	3.056	.075	26.386
2002 January	-.065	.000	.316	1.610	.252	.009	2.122
February	-.038	.003	.282	1.463	.142	.007	1.858
March	-.038	.008	.301	1.627	.256	.006	2.161
April	-.063	-.001	.283	1.665	.253	.006	2.142
May	-.056	.004	.287	1.724	.254	.003	2.216
June	-.072	.002	.280	1.669	.248	.007	2.134
July	-.035	.009	.307	1.694	.270	.012	2.258
August	-.053	.007	.317	1.765	.197	.010	2.244
September	-.037	.009	.296	1.575	.200	.006	2.048
October	-.081	.006	.309	1.764	.230	.005	2.233
November	-.042	.010	.283	1.728	.254	.004	2.237
December	-.031	.003	.324	1.618	.175	.003	2.091
Total	-.610	.061	3.583	19.901	2.732	.078	25.745
2003 January	-.067	.001	.313	1.596	.203	.005	2.051
February	-.018	.013	.262	1.416	.202	.004	1.880
March	-.012	.004	.282	1.706	.290	-.001	2.268
April	-.033	.004	.273	1.776	.257	.003	2.279
May	-.048	.002	.284	1.876	.274	.001	2.389
June	-.057	.004	.263	1.790	.308	.001	2.309
July	-.044	.005	.303	1.856	.283	.010	2.412
August	-.055	.001	.293	1.854	.295	.008	2.396
September	-.039	.004	.278	1.842	.256	-.002	2.340
October	-.040	.004	.283	1.860	.219	-.006	2.319
November	-.038	.003	.258	1.671	.228	-.003	2.120
December	-.040	.006	.299	1.792	.221	.001	2.278
Total	-.491	.051	3.391	21.034	3.035	.022	27.042
2004 January	-.046	.004	.325	1.724	.273	(s)	2.281
February	-.014	.009	.296	1.602	.312	.000	2.204
March	-.058	.010	.279	1.861	.327	-.003	2.414
April	-.085	.024	RE .262	1.793	.201	(s)	R 2.194
May	-.072	.037	RE .282	1.906	.267	.001	R 2.421
June	-.068	.020	RE .291	1.874	.280	.002	R 2.399
July	-.039	.009	E .328	1.903	.332	.010	2.543
7-Month Total	-.383	.113	E 2.063	12.662	1.990	.010	16.455
2003 7-Month Total	-.279	.033	1.980	12.015	1.816	.024	15.589
2002 7-Month Total	-.367	.025	2.055	11.453	1.675	.050	14.891

^a Crude oil and lease condensate. Includes imports into the Strategic Petroleum Reserve, which began in 1977.

^b Petroleum products, unfinished oils, pentanes plus, and gasoline blending components.

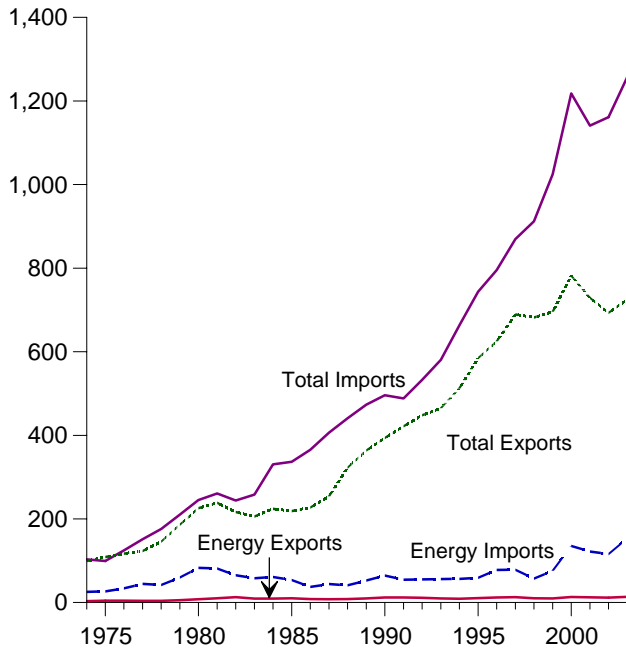
R=Revised. E=Estimate. (s)=Less than +0.5 trillion Btu and greater than -0.5 trillion Btu.

Notes: • See Notes 3 and 4 at end of section. • Net imports equal imports minus exports. Minus sign indicates exports are greater than imports.

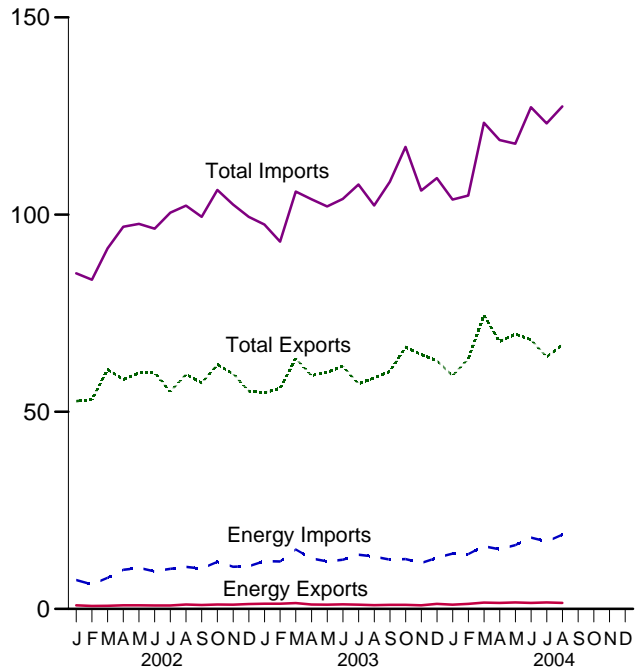
- Totals may not equal sum of components due to independent rounding.
- Geographic coverage is the 50 States and the District of Columbia.
Web Page: <http://www.eia.doe.gov/emeu/mer/overview.html>.
- Sources: • **Coal:** Tables 6.1 and A5. • **Coal Coke:** Section 2, "Energy Consumption Notes and Sources," Note 5, and Table A5. • **Natural Gas:** Tables 4.1 and A4. • **Crude Oil and Petroleum Products:** Tables 3.1b, A2, and A3. • **Electricity:** Tables 7.1 and A6.

Figure 1.5 Merchandise Trade Value
(Billion Dollars)

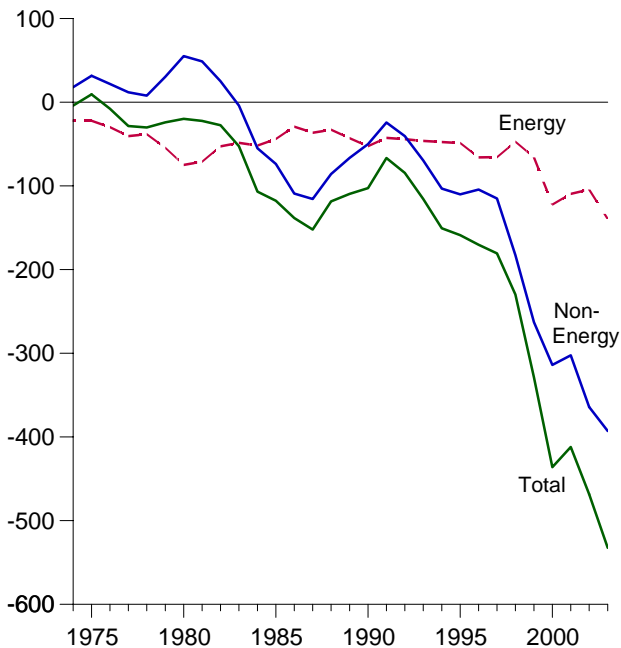
Imports and Exports, 1974-2003



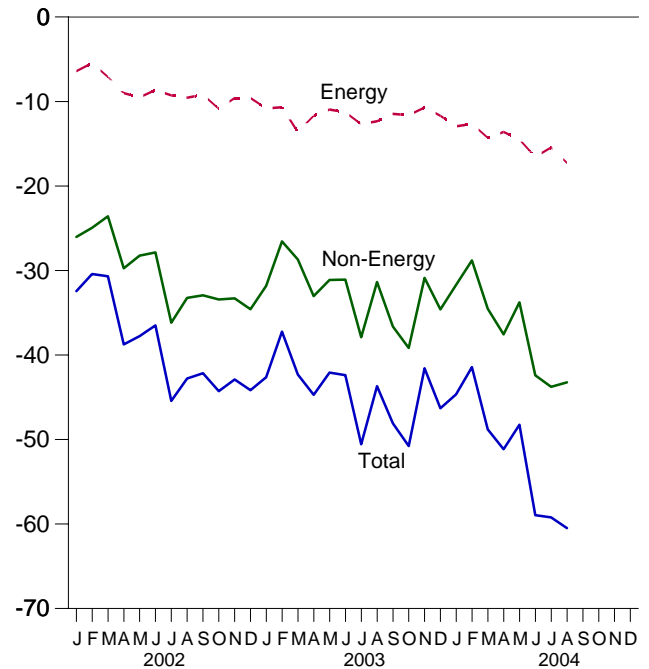
Imports and Exports, Monthly



Trade Balance, 1974-2003



Trade Balance, Monthly



Note: Because vertical scales differ, graphs should not be compared.
Web Page: <http://www.eia.doe.gov/emeu/mer/overview.html>.
Source: Table 1.5.

Table 1.5 Merchandise Trade Value
(Million Dollars)

	Petroleum ^a			Energy ^b			Non-Energy Balance	Total Merchandise		
	Exports	Imports	Balance	Exports	Imports	Balance		Exports	Imports	Balance
1974 Total	792	24,668	-23,876	3,444	25,454	-22,010	18,126	99,437	103,321	-3,884
1975 Total	907	25,197	-24,289	4,470	26,476	-22,006	31,557	108,856	99,305	9,551
1976 Total	998	32,226	-31,228	4,226	33,996	-29,770	21,950	116,794	124,614	-7,820
1977 Total	1,276	42,368	-41,093	4,184	44,537	-40,354	12,001	123,182	151,534	-28,353
1978 Total	1,561	39,526	-37,965	3,881	42,096	-38,215	8,010	145,847	176,052	-30,205
1979 Total	1,914	56,715	-54,801	5,621	59,998	-54,377	30,455	186,363	210,285	-23,922
1980 Total	2,833	78,637	-75,803	7,982	82,924	-74,942	55,246	225,566	245,262	-19,696
1981 Total	3,696	76,659	-72,963	10,279	81,360	-71,081	48,814	238,715	260,982	-22,267
1982 Total	5,947	60,458	-54,511	12,729	65,409	-52,680	25,170	216,442	243,952	-27,510
1983 Total	4,557	53,217	-48,659	9,500	57,952	-48,452	-3,957	205,639	258,048	-52,409
1984 Total	4,470	56,924	-52,454	9,311	60,980	-51,669	-55,033	223,976	330,678	-106,703
1985 Total	4,707	50,475	-45,768	9,971	53,917	-43,946	-73,765	218,815	336,526	-117,712
1986 Total	3,640	35,142	-31,503	8,115	37,310	-29,195	-109,084	227,159	365,438	-138,279
1987 Total	3,922	42,285	-38,363	7,713	44,220	-36,506	-115,613	254,122	406,241	-152,119
1988 Total	3,693	38,787	-35,094	8,235	41,042	-32,806	-85,720	322,426	440,952	-118,526
1989 Total	5,021	49,704	-44,683	9,869	52,779	-42,910	-66,490	363,812	473,211	-109,399
1990 Total	6,901	61,583	-54,682	12,233	64,661	-52,428	-50,068	393,592	496,088	-102,496
1991 Total	6,954	51,350	-44,396	12,081	54,629	-42,548	-24,175	421,730	488,453	-66,723
1992 Total	6,412	51,217	-44,805	11,254	55,256	-44,002	-40,500	448,164	532,665	-84,501
1993 Total	6,215	51,046	-44,831	9,756	55,900	-46,144	-69,425	465,091	580,659	-115,568
1994 Total	5,659	50,835	-45,176	8,911	56,391	-47,480	-103,149	512,626	663,256	-150,629
1995 Total	6,321	54,368	-48,047	10,358	59,109	-48,751	-110,050	584,742	743,543	-158,801
1996 Total	7,984	72,022	-64,038	12,181	78,086	-65,905	-104,309	625,075	795,289	-170,214
1997 Total	8,592	71,152	-62,560	12,682	78,277	-65,595	-114,927	689,182	869,704	-180,522
1998 Total	6,574	50,264	-43,690	10,251	57,323	-47,072	-182,686	682,138	911,896	-229,758
1999 Total	7,118	67,173	-60,055	9,880	75,803	-65,923	-262,898	695,797	1,024,618	-328,821
2000 Total	10,192	119,251	-109,059	13,179	135,367	-122,188	-313,916	781,918	1,218,022	-436,104
2001 Total	8,868	102,747	-93,879	12,494	121,923	-109,429	-302,470	729,100	1,140,999	-411,899
2002 January	639	6,348	-5,709	908	7,321	-6,413	-26,031	52,667	85,111	-32,444
February	597	5,427	-4,830	744	6,200	-5,456	-24,955	53,061	83,473	-30,411
March	593	6,914	-6,321	782	7,878	-7,096	-23,591	60,728	91,415	-30,687
April	676	8,907	-8,231	910	9,917	-9,007	-29,738	58,146	96,891	-38,745
May	664	9,365	-8,701	903	10,423	-9,520	-28,245	59,884	97,649	-37,765
June	603	8,465	-7,862	883	9,522	-8,639	-27,856	59,920	96,415	-36,495
July	664	9,086	-8,422	883	10,153	-9,270	-36,170	55,032	100,472	-45,440
August	822	9,637	-8,815	1,121	10,667	-9,546	-33,241	59,491	102,277	-42,787
September	726	9,119	-8,393	979	10,191	-9,212	-32,939	57,277	99,429	-42,151
October	827	10,712	-9,885	1,104	11,961	-10,857	-33,419	61,975	106,251	-44,276
November	779	9,328	-8,549	1,085	10,682	-9,597	-33,297	59,671	102,564	-42,894
December	979	9,354	-8,375	1,239	10,831	-9,592	-34,577	55,249	99,418	-44,169
Total	8,569	102,663	-94,094	11,541	115,748	-104,207	-364,056	693,103	1,161,366	-468,263
2003 January	1,028	10,435	-9,407	1,302	12,129	-10,827	-31,810	54,854	97,491	-42,637
February	983	10,258	-9,275	1,331	12,018	-10,687	-26,550	55,917	93,154	-37,237
March	991	12,634	-11,643	1,467	15,086	-13,619	-28,699	63,524	105,842	-42,318
April	868	11,095	-10,227	1,111	12,796	-11,685	-33,022	59,162	103,869	-44,707
May	837	10,399	-9,562	1,072	12,030	-10,958	-31,127	59,983	102,068	-42,085
June	834	10,790	-9,956	1,163	12,460	-11,297	-31,090	61,570	103,958	-42,387
July	787	11,844	-11,057	1,060	13,732	-12,672	-37,889	57,070	107,631	-50,561
August	748	11,595	-10,847	969	13,300	-12,331	-31,365	58,611	102,307	-43,696
September	783	10,958	-10,175	1,049	12,506	-11,457	-36,626	60,239	108,322	-48,083
October	782	11,134	-10,352	1,048	12,655	-11,607	-39,162	66,389	117,158	-50,769
November	692	10,189	-9,497	930	11,630	-10,700	-30,875	64,492	106,066	-41,575
December	876	11,102	-10,226	1,266	12,956	-11,690	-34,606	62,959	109,255	-46,296
Total	10,209	132,433	-122,224	13,768	153,298	-139,530	-392,820	724,771	1,257,121	-532,350
2004 January	719	11,875	-11,156	1,088	14,029	-12,941	-31,708	59,151	103,800	-44,649
February	898	11,696	-10,798	1,261	13,899	-12,638	-28,809	63,388	104,835	-41,447
March	1,101	13,991	-12,890	1,597	15,875	-14,278	-34,533	74,475	123,287	-48,811
April	987	13,058	-12,071	1,524	15,129	-13,605	-37,551	67,760	118,917	-51,156
May	1,133	14,143	-13,010	1,662	16,163	-14,501	-33,760	69,704	117,965	-48,261
June	1,009	15,705	-14,696	1,521	18,073	-16,552	-42,395	68,273	127,220	-58,947
July	1,051	14,625	-13,574	1,657	17,104	-15,447	R -43,763	R 63,906	R 123,117	R -59,210
August	1,167	16,527	-15,360	1,538	18,789	-17,251	-43,236	66,936	127,422	-60,487
8-Month Total	8,065	111,620	-103,555	11,848	129,061	-117,213	-295,755	533,593	946,562	-412,969
2003 8-Month Total	7,076	89,050	-81,974	9,475	103,551	-94,076	-251,552	470,693	816,321	-345,628
2002 8-Month Total	5,258	64,149	-58,891	7,134	72,081	-64,947	-229,827	458,931	753,703	-294,773

^a Crude oil, petroleum preparations, liquefied propane and butane, and other mineral fuels.

^b Petroleum, coal, natural gas, and electricity.

R=Revised.

Notes: • Monthly data are not adjusted for seasonal variations. • See Note 5 at end of section. • Totals may not equal sum of components due to independent rounding. • The U.S. import statistics reflect both government and

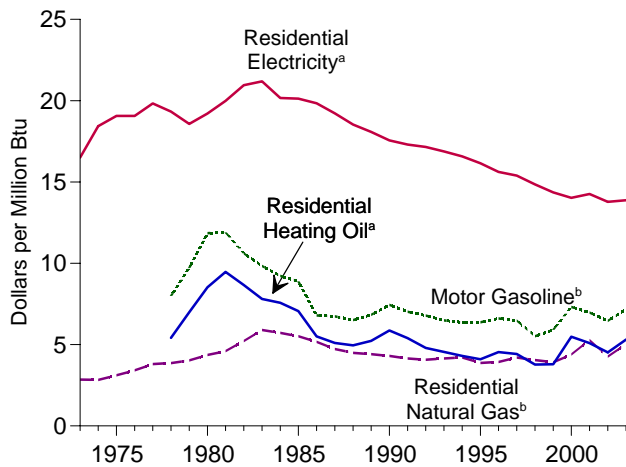
nongovernment imports of merchandise from foreign countries into the U.S. customs territory, which comprises the 50 States, the District of Columbia, Puerto Rico, and the Virgin Islands.

Web Page: <http://www.eia.doe.gov/emeu/mer/overview.html>.

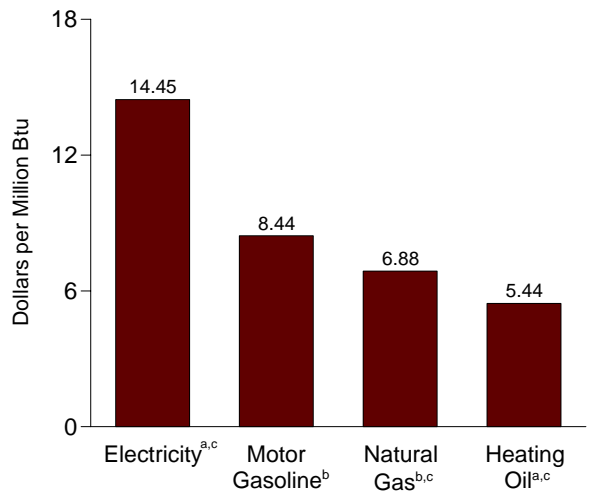
Source: U.S. Department of Commerce, Bureau of the Census, Foreign Trade Division. For details, see "Sources for Table 1.5" at the end of this section.

Figure 1.6 Cost of Fuels to End Users in Constant (1982-1984) Dollars

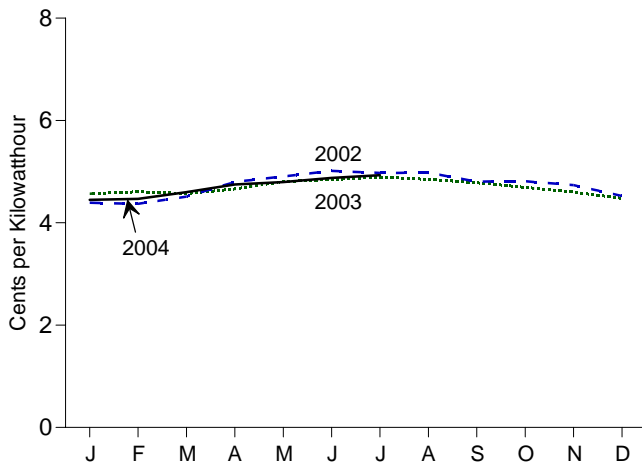
Costs, 1973-2003



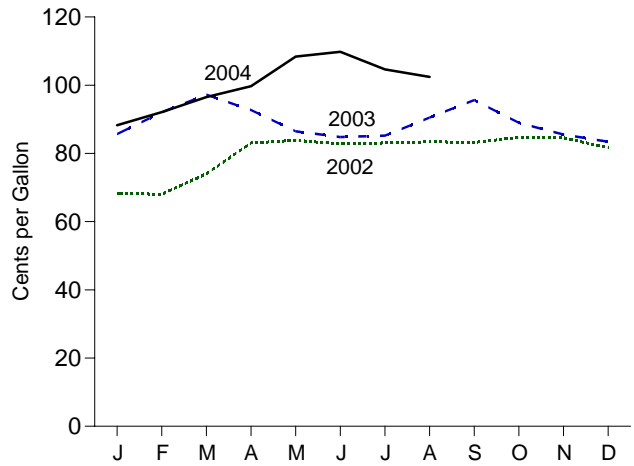
Costs, July 2004



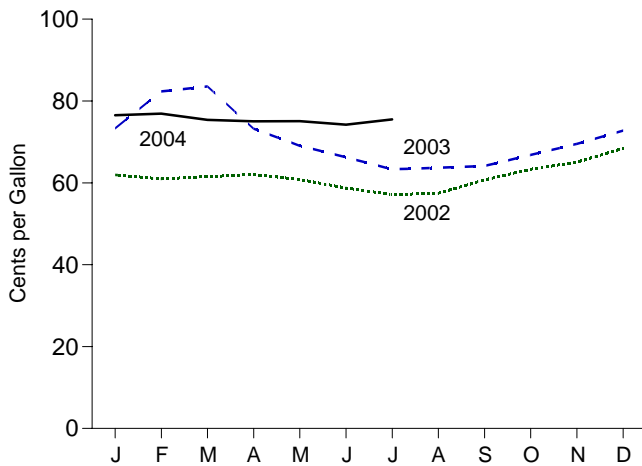
Residential Electricity^a, Monthly



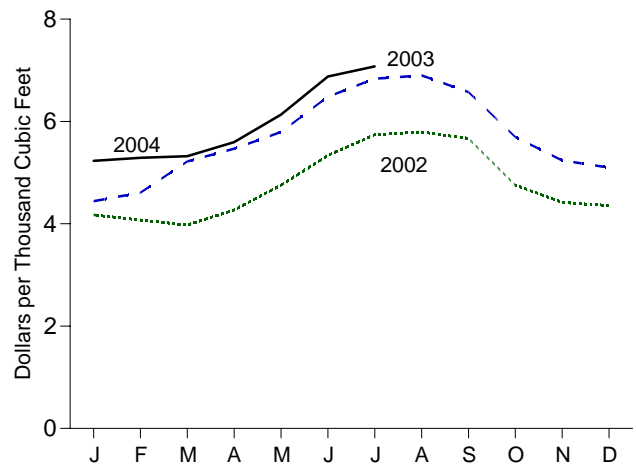
Motor Gasoline^b, Monthly



Residential Heating Oil^a, Monthly



Residential Natural Gas^b, Monthly



^aExcludes taxes.
^bIncludes taxes.
^cResidential.

Note: Because vertical scales differ, graphs should not be compared.
 Web Page: <http://www.eai.doe.gov/emeu/mer/overview.html>.
 Source: Table 1.6.

Table 1.6 Cost of Fuels to End Users in Constant (1982-1984) Dollars

	Consumer Price Index (Urban) ^a	Motor Gasoline ^b		Residential Heating Oil ^c		Residential Natural Gas ^d		Residential Electricity ^e	
	Index 1982-1984=100	Cents per Gallon	Dollars per Million Btu	Cents per Gallon	Dollars per Million Btu	Cents per Thousand Cubic Feet	Dollars per Million Btu	Cents per Kilowatthour	Dollars per Million Btu
1973 Average	44.4	NA	NA	NA	NA	290.5	2.85	5.6	16.50
1974 Average	49.3	NA	NA	NA	NA	290.1	2.83	6.3	18.43
1975 Average	53.8	NA	NA	NA	NA	317.8	3.12	6.5	19.07
1976 Average	56.9	NA	NA	NA	NA	348.0	3.41	6.5	19.06
1977 Average	60.6	NA	NA	NA	NA	387.8	3.81	6.8	19.83
1978 Average	65.2	100.0	8.00	75.2	5.42	392.6	3.86	6.6	19.33
1979 Average	72.6	121.5	9.71	97.0	6.99	410.5	4.03	6.3	18.57
1980 Average	82.4	148.2	11.85	118.2	8.52	446.6	4.36	6.6	19.21
1981 Average	90.9	148.8	11.90	131.4	9.47	471.9	4.60	6.8	19.99
1982 Average	96.5	132.7	10.61	120.2	8.67	535.8	5.22	7.2	20.96
1983 Average	99.6	123.0	9.83	108.2	7.80	608.4	5.90	7.2	21.19
1984 Average	103.9	115.3	9.22	105.0	7.57	589.0	5.72	6.88	20.17
1985 Average	107.6	111.2	8.89	97.9	7.06	568.8	5.52	6.87	20.13
1986 Average	109.6	84.9	6.79	76.3	5.50	531.9	5.17	6.77	19.84
1987 Average	113.6	84.2	6.74	70.7	5.10	487.7	4.73	6.56	19.22
1988 Average	118.3	81.4	6.51	68.7	4.96	462.4	4.49	6.32	18.53
1989 Average	124.0	85.5	6.83	72.6	5.23	454.8	4.41	6.17	18.08
1990 Average	130.7	93.1	7.44	81.3	5.86	443.8	4.31	5.99	17.56
1991 Average	136.2	87.8	7.02	74.8	5.39	427.3	4.14	5.90	17.30
1992 Average	140.3	84.8	6.78	66.6	4.80	419.8	4.07	5.85	17.15
1993 Average	144.5	81.2	6.49	63.0	4.55	426.3	4.15	5.76	16.88
1994 Average	148.2	79.2	6.36	59.6	4.30	432.5	4.20	5.65	16.57
1995 Average	152.4	79.1	6.37	56.9	4.10	397.6	3.87	5.51	16.15
1996 Average	156.9	82.1	6.61	63.0	4.54	404.1	3.93	5.33	15.62
1997 Average	160.5	80.4	6.48	61.3	4.42	432.4	4.21	5.25	15.39
1998 Average	163.0	68.4	5.51	52.3	3.77	418.4	4.05	5.07	14.85
1999 Average	166.6	73.3	5.91	52.6	3.79	401.6	3.91	4.90	14.36
2000 Average	172.2	90.8	7.32	76.1	5.49	450.6	4.39	4.79	14.02
2001 Average	177.1	86.4	6.97	70.6	5.09	543.8	5.27	4.87	14.27
2002 January	177.1	68.3	5.51	61.9	4.47	417.3	4.05	4.57	13.39
February	177.8	68.1	5.49	61.0	4.40	407.2	3.95	4.61	13.50
March	178.8	74.0	5.97	61.5	4.44	397.7	3.86	4.57	13.39
April	179.8	83.0	6.70	62.1	4.48	427.1	4.15	4.66	13.66
May	179.8	83.9	6.76	60.8	4.38	475.5	4.62	4.81	14.08
June	179.9	82.8	6.67	58.8	4.24	533.6	5.18	4.85	14.21
July	180.1	83.1	6.70	57.1	4.12	574.1	5.57	4.89	14.34
August	180.7	83.5	6.73	57.4	4.14	579.4	5.63	4.85	14.21
September	181.0	83.3	6.71	60.7	4.38	566.9	5.50	4.78	14.02
October	181.3	84.7	6.83	63.3	4.57	475.5	4.62	4.69	13.76
November	181.3	84.6	6.82	65.1	4.69	441.8	4.29	4.60	13.48
December	180.9	81.6	6.58	68.4	4.93	435.6	4.23	4.48	13.12
Average	179.9	80.1	6.46	62.8	4.52	439.7	4.27	4.70	13.78
2003 January	181.7	85.7	6.91	R 73.3	5.29	444.1	4.32	4.39	12.87
February	183.1	92.1	7.43	R 82.4	R 5.94	461.0	4.48	4.37	12.81
March	184.2	97.2	7.84	83.6	6.02	521.7	5.07	4.51	13.22
April	183.8	92.7	7.48	73.2	5.28	546.8	5.31	4.80	14.06
May	183.5	86.5	6.98	69.0	4.98	579.3	5.63	4.90	14.37
June	183.7	84.8	6.84	R 66.2	R 4.78	648.3	6.30	5.01	14.69
July	183.9	85.2	6.87	63.3	4.56	R 683.5	R 6.64	4.98	14.58
August	184.6	90.5	7.30	R 63.7	R 4.59	690.1	6.71	4.98	14.59
September	185.2	95.6	7.71	R 64.1	4.63	657.7	6.39	4.81	14.08
October	185.0	89.0	7.18	R 66.8	4.82	569.7	5.54	4.81	14.10
November	184.5	85.5	6.90	69.5	5.01	524.1	5.09	4.74	13.88
December	184.3	83.5	6.73	72.8	5.25	510.0	4.96	4.53	13.26
Average	184.0	89.0	7.18	R 73.6	5.31	516.8	5.02	4.73	13.87
2004 January	185.2	88.3	7.12	76.5	5.52	R 523.2	R 5.08	4.45	13.04
February	186.2	92.1	7.43	76.9	5.55	529.0	5.14	4.47	13.10
March	187.4	96.5	7.79	75.4	5.44	532.0	5.17	R 4.60	R 13.48
April	188.0	99.7	8.04	75.1	5.41	R 559.6	R 5.44	R 4.75	R 13.92
May	189.1	108.4	8.74	75.1	5.41	613.4	5.96	4.80	14.06
June	189.7	109.8	8.86	R 74.2	R 5.35	687.9	6.69	R 4.88	R 14.29
July	189.4	104.6	8.44	75.5	5.44	707.5	6.88	4.93	14.45
August	189.5	102.4	8.26	NA	NA	NA	NA	NA	NA

^a Consumer Price Index, All Urban Consumers, All Items, 1982-1984 = 100.0.

^b Includes taxes.

^c Excludes taxes.

R=Revised. NA=Not available.

Notes: • Fuel costs are calculated by using the Urban Consumer Price Index (CPI) developed by the Bureau of Labor Statistics. • Annual averages may not equal average of months due to independent rounding.

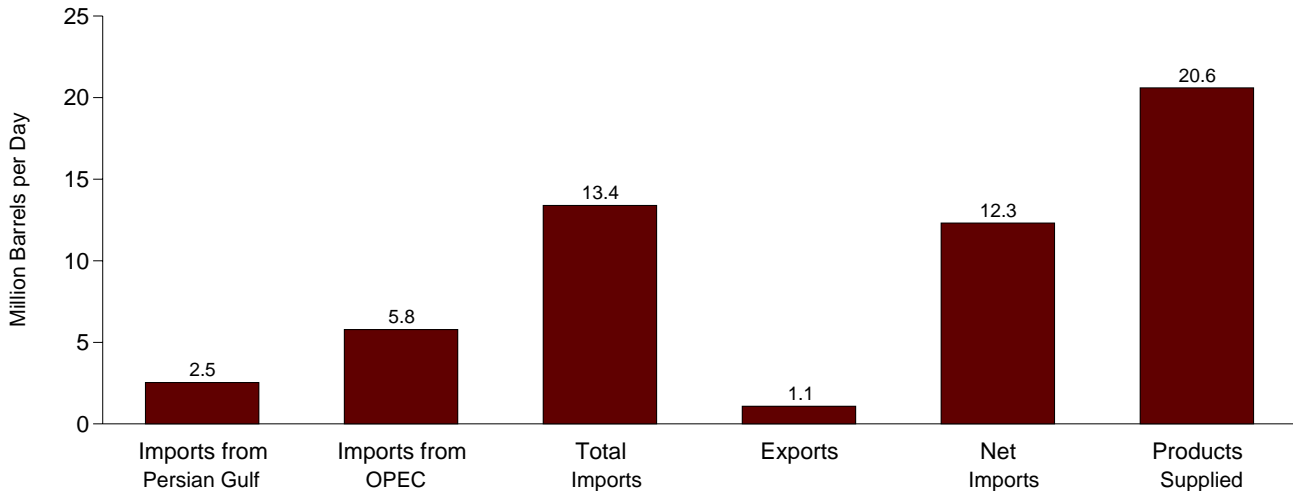
• Geographic coverage is the 50 States and the District of Columbia.

Web Page: <http://www.eia.doe.gov/emeu/mer/overview.html>.

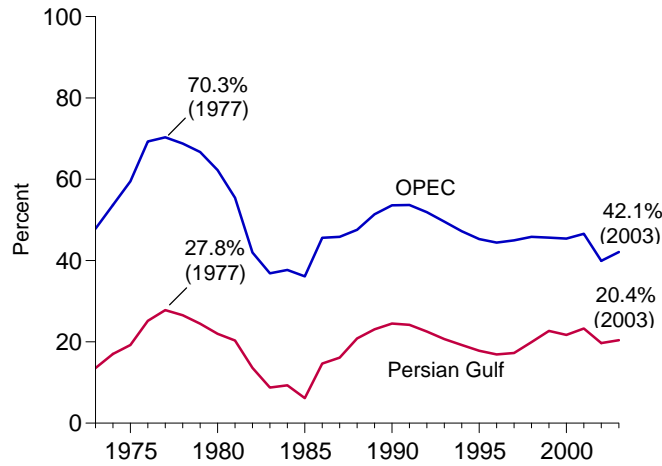
Sources: • **Fuel Prices:** Tables 9.4 (All Types), 9.8c, 9.11, and 9.9, adjusted by the CPI. • **CPI: 1973-2001**—*Economic Report of the President*, February 2004, Table B-60. **2002 forward**—Council of Economic Advisers, *Economic Indicators*, October 2004, "Consumer Prices - All Urban Consumers." • **Conversion Factors:** Tables A1, A3, A4, and A6.

Figure 1.7 Overview of U.S. Petroleum Trade

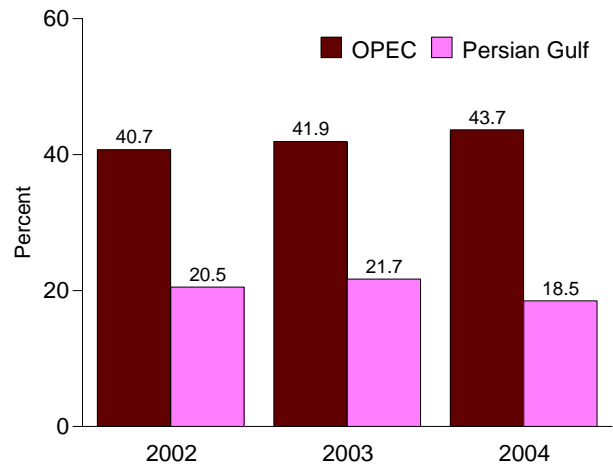
Overview, July 2004



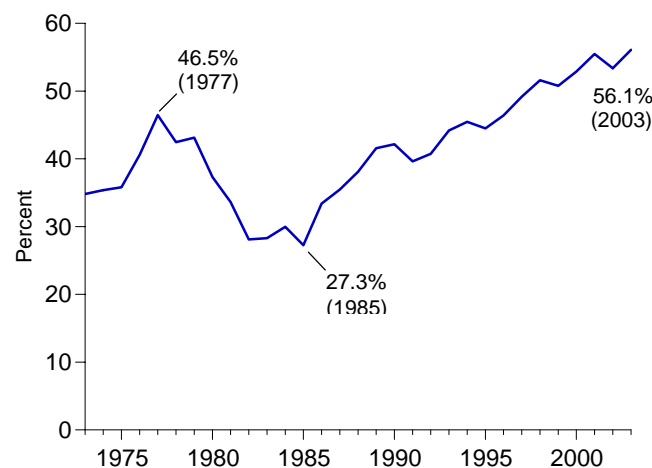
Imports from OPEC and the Persian Gulf as a Share of Total Imports 1973-2003



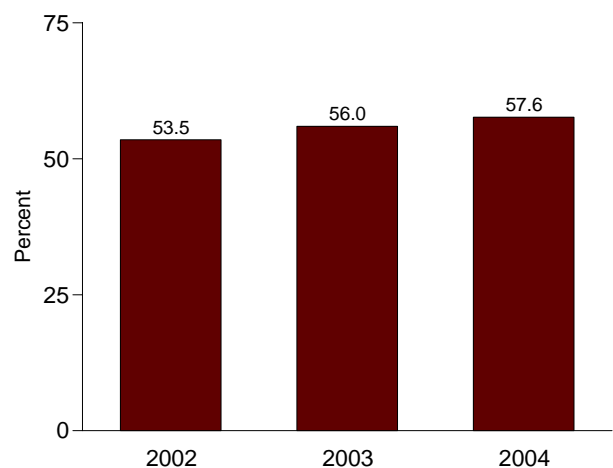
January-July



Net Imports as Share of Products Supplied 1973-2003



January-July



OPEC=Organization of Petroleum Exporting Countries.
Note: Because vertical scales differ, graphs should not be compared.

Web Page: <http://www.eia.doe.gov/emeu/mer/overview.html>.
Source: Table 1.7.

Table 1.7 Overview of U.S. Petroleum Trade

	Imports from Persian Gulf ^a	Imports from OPEC ^b	Imports	Exports	Net Imports	Products Supplied	As Share of Products Supplied				As Share of Total Imports	
							Imports from Persian Gulf ^a	Imports from OPEC ^b	Imports	Net Imports	Imports from Persian Gulf ^a	Imports from OPEC ^b
							Thousand Barrels per Day					
1973 Average	848	2,993	6,256	231	6,025	17,308	4.9	17.3	36.1	34.8	13.6	47.8
1974 Average	1,039	3,280	6,112	221	5,892	16,653	6.2	19.7	36.7	35.4	17.0	53.7
1975 Average	1,165	3,601	6,056	209	5,846	16,322	7.1	22.1	37.1	35.8	19.2	59.5
1976 Average	1,840	5,066	7,313	223	7,090	17,461	10.5	29.0	41.9	40.6	25.2	69.3
1977 Average	2,448	6,193	8,807	243	8,565	18,431	13.3	33.6	47.8	46.5	27.8	70.3
1978 Average	2,219	5,751	8,363	362	8,002	18,847	11.8	30.5	44.4	42.5	26.5	68.8
1979 Average	2,069	5,637	8,456	471	7,985	18,513	11.2	30.5	45.7	43.1	24.5	66.7
1980 Average	1,519	4,300	6,909	544	6,365	17,056	8.9	25.2	40.5	37.3	22.0	62.2
1981 Average	1,219	3,323	5,996	595	5,401	16,058	7.6	20.7	37.3	33.6	20.3	55.4
1982 Average	696	2,146	5,113	815	4,298	15,296	4.5	14.0	33.4	28.1	13.6	42.0
1983 Average	442	1,862	5,051	739	4,312	15,231	2.9	12.2	33.2	28.3	8.8	36.9
1984 Average	506	2,049	5,437	722	4,715	15,726	3.2	13.0	34.6	30.0	9.3	37.7
1985 Average	311	1,830	5,067	781	4,286	15,726	2.0	11.6	32.2	27.3	6.1	36.1
1986 Average	912	2,837	6,224	785	5,439	16,281	5.6	17.4	38.2	33.4	14.7	45.6
1987 Average	1,077	3,060	6,678	764	5,914	16,665	6.5	18.4	40.1	35.5	16.1	45.8
1988 Average	1,541	3,520	7,402	815	6,587	17,283	8.9	20.4	42.8	38.1	20.8	47.6
1989 Average	1,861	4,140	8,061	859	7,202	17,325	10.7	23.9	46.5	41.6	23.1	51.4
1990 Average	1,966	4,296	8,018	857	7,161	16,988	11.6	25.3	47.2	42.2	24.5	53.6
1991 Average	1,845	4,092	7,627	1,001	6,626	16,714	11.0	24.5	45.6	39.6	24.2	53.7
1992 Average	1,778	4,092	7,888	950	6,938	17,033	10.4	24.0	46.3	40.7	22.5	51.9
1993 Average	1,782	4,273	8,620	1,003	7,618	17,237	10.3	24.8	50.0	44.2	20.7	49.6
1994 Average	1,728	4,247	8,996	942	8,054	17,718	9.8	24.0	50.0	45.5	19.2	47.2
1995 Average	1,573	4,002	8,835	949	7,886	17,725	8.9	22.6	49.8	44.5	17.8	45.3
1996 Average	1,604	4,211	9,478	981	8,498	18,309	8.8	23.0	51.8	46.4	16.9	44.4
1997 Average	1,755	4,569	10,162	1,003	9,158	18,620	9.4	24.5	54.6	49.2	17.3	45.0
1998 Average	2,136	4,905	10,708	945	9,764	18,917	11.3	25.9	56.6	51.6	19.9	45.8
1999 Average	2,464	4,953	10,852	940	9,912	19,519	12.6	25.4	55.6	50.8	22.7	45.6
2000 Average	2,488	5,203	11,459	1,040	10,419	19,701	12.6	26.4	58.2	52.9	21.7	45.4
2001 Average	2,761	5,528	11,871	971	10,900	19,649	14.1	28.1	60.4	55.5	23.3	46.6
2002												
January	2,670	5,029	11,088	861	10,228	19,454	13.7	25.9	57.0	52.6	24.1	45.4
February	2,484	4,733	10,904	1,175	9,729	19,444	12.8	24.3	56.1	50.0	22.8	43.4
March	2,556	4,991	11,198	853	10,345	19,676	13.0	25.4	56.9	52.6	22.8	44.6
April	2,400	4,606	11,765	890	10,876	19,552	12.3	23.6	60.2	55.6	20.4	39.1
May	2,238	4,561	11,769	910	10,859	19,728	11.3	23.1	59.7	55.0	19.0	38.8
June	2,090	4,356	11,753	880	10,873	19,875	10.5	21.9	59.1	54.7	17.8	37.1
July	1,999	4,366	11,624	839	10,785	20,076	10.0	21.7	57.9	53.7	17.2	37.6
August	1,903	4,638	11,890	1,138	10,752	20,221	9.4	22.9	58.8	53.2	16.0	39.0
September	2,052	4,452	11,075	1,015	10,059	19,461	10.5	22.9	56.9	51.7	18.5	40.2
October	2,177	4,686	11,893	962	10,931	19,678	11.1	23.8	60.4	55.5	18.3	39.4
November	2,222	4,682	12,268	1,026	11,242	19,991	11.1	23.4	61.4	56.2	18.1	38.2
December	2,449	4,164	11,100	1,272	9,828	19,943	12.3	20.9	55.7	49.3	22.1	37.5
Average	2,269	4,605	11,530	984	10,546	19,761	11.5	23.3	58.3	53.4	19.7	39.9
2003												
January	2,735	4,303	11,104	1,212	9,892	20,017	13.7	21.5	55.5	49.4	24.6	38.8
February	2,676	4,052	10,921	1,067	9,854	20,375	13.1	19.9	53.6	48.4	24.5	37.1
March	2,818	5,433	12,044	1,051	10,993	19,708	14.3	27.6	61.1	55.8	23.4	45.1
April	3,148	5,949	12,599	1,053	11,546	19,830	15.9	30.0	63.5	58.2	25.0	47.2
May	2,669	5,751	12,918	1,097	11,822	19,344	13.8	29.7	66.8	61.1	20.7	44.5
June	2,327	5,526	13,001	1,065	11,936	19,793	11.8	27.9	65.7	60.3	17.9	42.5
July	2,170	4,736	12,736	976	11,760	20,094	10.8	23.6	63.4	58.5	17.0	37.2
August	1,849	4,934	12,769	947	11,822	20,586	9.0	24.0	62.0	57.4	14.5	38.6
September	2,397	5,394	12,868	960	11,908	19,933	12.0	27.1	64.6	59.7	18.6	41.9
October	2,353	5,342	12,373	970	11,402	20,182	11.7	26.5	61.3	56.5	19.0	43.2
November	2,586	5,237	11,712	933	10,780	19,873	13.0	26.4	58.9	54.2	22.1	44.7
December	2,312	5,225	12,033	990	11,043	20,679	11.2	25.3	58.2	53.4	19.2	43.4
Average	2,501	5,162	12,264	1,027	11,238	20,034	12.5	25.8	61.2	56.1	20.4	42.1
2004												
January	2,300	5,179	11,727	748	10,979	20,393	11.3	25.4	57.5	53.8	19.6	44.2
February	2,098	5,215	12,329	1,046	11,283	20,549	10.2	25.4	60.0	54.9	17.0	42.3
March	2,373	5,769	13,073	1,024	12,048	20,161	11.8	28.6	64.8	59.8	18.2	44.1
April	2,322	5,388	12,450	1,153	11,297	20,207	11.5	26.7	61.6	55.9	18.7	43.3
May	2,478	5,753	12,989	1,052	11,937	20,209	12.3	28.5	64.3	59.1	19.1	44.3
June	2,370	5,865	13,301	1,070	12,231	20,333	11.7	28.8	65.4	60.2	17.8	44.1
July	2,538	5,786	13,389	1,080	12,310	20,601	12.3	28.1	65.0	59.8	19.0	43.2
7-Month Average	2,357	5,568	12,754	1,024	11,730	20,349	11.6	27.4	62.7	57.6	18.5	43.7
2003 7-Month Average	2,648	5,116	12,201	1,075	11,127	19,874	13.3	25.7	61.4	56.0	21.7	41.9
2002 7-Month Average	2,347	4,664	11,448	912	10,536	19,690	11.9	23.7	58.1	53.5	20.5	40.7

^a Bahrain, Iran, Iraq, Kuwait, Qatar, Saudi Arabia, and the United Arab Emirates.

^b Organization of Petroleum Exporting Countries. See Glossary.

Notes: • Readers of Table 1.7 may be interested in a feature article, "Measuring Dependence on Imported Oil," that was published in the August 1995 *Monthly Energy Review*. • Petroleum is crude oil, lease condensate, unfinished oils, petroleum products, natural gas plant liquids, and nonhydrocarbon compounds blended into finished petroleum products. • Beginning in October 1977, petroleum imported for the Strategic Petroleum

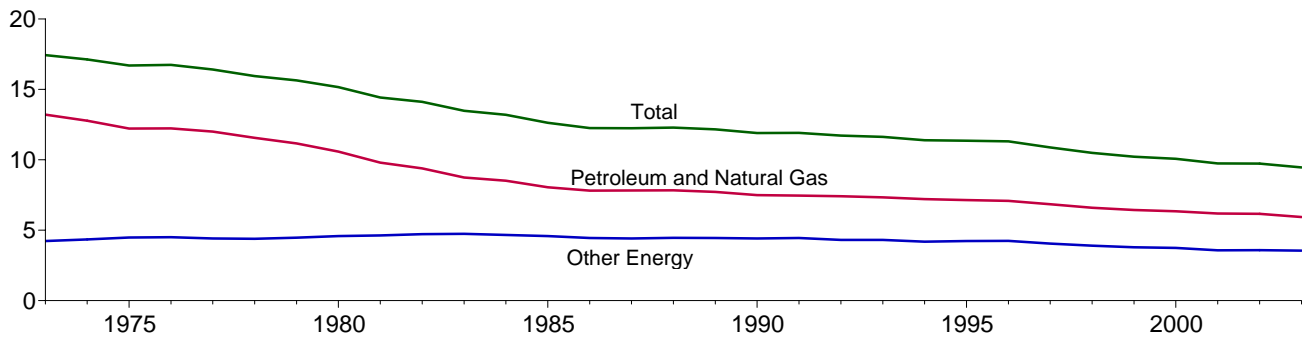
Reserves is included. • Annual averages may not equal average of months due to independent rounding. • U.S. geographic coverage is the 50 States and the District of Columbia. U.S. exports include shipments to U.S. territories, and imports include receipts from U.S. territories.

Web Page: <http://www.eia.doe.gov/emeu/mer/overview.html>.

Sources: • **Column 1:** Table 3.3b. • **Column 2:** Table 3.3d. • **Columns 3-5:** Table 3.1b. • **Column 6:** Table 3.1a. • **Columns 7-12:** Calculated by Energy Information Administration.

Table 1.7 has not been updated this month.

Figure 1.8 Energy Consumption per Dollar of Gross Domestic Product
(Thousand Btu per Chained (2000) Dollar)



Web Page: <http://www.eia.doe.gov/emeu/mer/overview.html>.
Source: Table 1.8.

Table 1.8 Energy Consumption per Dollar of Gross Domestic Product

	Energy Consumption			Gross Domestic Product (GDP)	Energy Consumption per Dollar of GDP		
	Petroleum and Natural Gas ^a	Other Energy ^{a, b}	Total ^a		Petroleum and Natural Gas	Other Energy ^b	Total
	Quadrillion Btu				Billion Chained (2000) Dollars	Thousand Btu per Chained (2000) Dollar	
1973 Year	57.352	18.356	75.708	4,341.5	13.21	4.23	17.44
1974 Year	55.187	18.804	73.991	4,319.6	12.78	4.35	17.13
1975 Year	52.678	19.321	71.999	4,311.2	12.22	4.48	16.70
1976 Year	55.520	20.492	76.012	4,540.9	12.23	4.51	16.74
1977 Year	57.053	20.947	78.000	4,750.5	12.01	4.41	16.42
1978 Year	57.966	22.021	79.986	5,015.0	11.56	4.39	15.95
1979 Year	57.789	23.114	80.903	5,173.4	11.17	4.47	15.64
1980 Year	54.596	23.693	78.289	5,161.7	10.58	4.59	15.17
1981 Year	51.859	24.483	76.342	5,291.7	9.80	4.63	14.43
1982 Year	48.736	24.516	73.253	5,189.3	9.39	4.72	14.12
1983 Year	47.411	25.690	73.101	5,423.8	8.74	4.74	13.48
1984 Year	49.558	27.178	76.736	5,813.6	8.52	4.67	13.20
1985 Year	48.756	27.713	76.469	6,053.7	8.05	4.58	12.63
1986 Year	48.904	27.878	76.782	6,263.6	7.81	4.45	12.26
1987 Year	50.609	28.616	79.225	6,475.1	7.82	4.42	12.24
1988 Year	52.774	30.070	82.844	6,742.7	7.83	4.46	12.29
1989 Year	53.923	31.034	84.957	6,981.4	7.72	4.45	12.17
1990 Year	53.282	31.386	84.668	7,112.5	7.49	4.41	11.90
1991 Year	52.994	31.601	84.595	7,100.5	7.46	4.45	11.91
1992 Year	54.362	31.587	85.949	7,336.6	7.41	4.31	11.72
1993 Year	^a 55.193	^a 32.482	^a 87.578	7,532.7	^a 7.33	^a 4.31	^a 11.63
1994 Year	56.512	32.845	89.248	7,835.5	7.21	4.19	11.39
1995 Year	57.338	34.000	91.221	8,031.7	7.14	4.23	11.36
1996 Year	58.954	35.353	94.224	8,328.9	7.08	4.24	11.31
1997 Year	59.594	35.239	94.727	8,703.5	6.85	4.05	10.88
1998 Year	59.869	35.394	95.146	9,066.9	6.60	3.90	10.49
1999 Year	60.970	35.926	96.774	9,470.3	6.44	3.79	10.22
2000 Year	62.320	36.724	98.905	9,817.0	6.35	3.74	10.07
2001 Year	61.239	35.286	96.378	9,890.7	6.19	3.57	9.74
2002 Year	62.064	36.136	98.026	10,074.8	6.16	3.59	9.73
2003 Year	^R 61.630	^R 36.829	^R 98.219	10,381.3	5.94	3.55	9.46

^a Beginning in 1993, ethanol blended into motor gasoline is included in both "Petroleum and Natural Gas" and "Other Energy," but is counted only once in total consumption.

^b "Other Energy" is coal, nuclear electric power, renewable energy, pumped-storage hydroelectric power, and net imports of coal coke and electricity.

R=Revised.

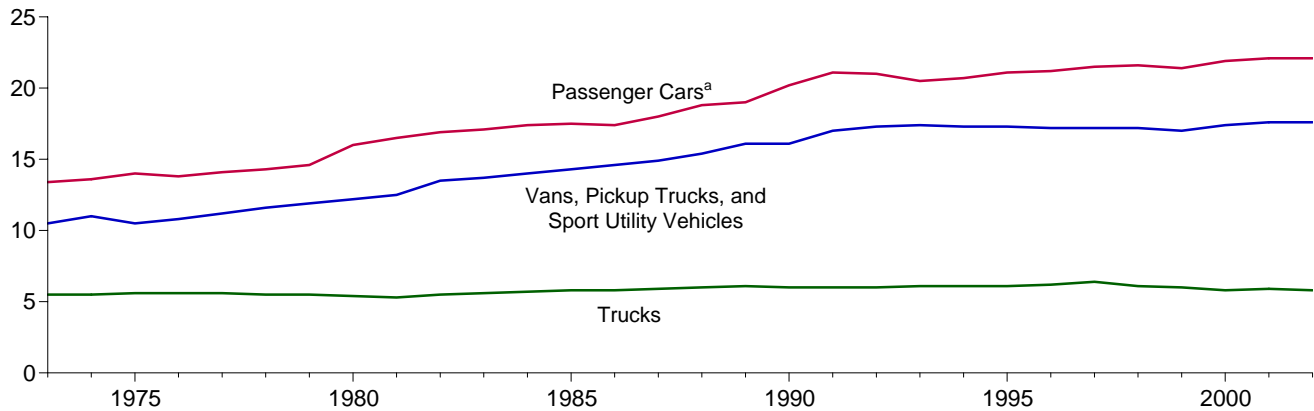
Notes: • Totals may not equal sum of components due to independent rounding. • Geographic coverage is the 50 States and the District of

Columbia.

Web Page: <http://www.eia.doe.gov/emeu/mer/overview.html>.

Sources: • **Energy Consumption:** Table 1.3. • **Gross Domestic Product: 1973-2001**—U.S. Department of Commerce, Bureau of Economic Analysis, *Survey of Current Business*, December 2003, Table 7B. **2002 and 2003**—U.S. Department of Commerce, Bureau of Economic Analysis, *BEA News Release*, September 29, 2004, Table 3, which is available at website www.bea.doc.gov/bea/newsrel/gdp400p.htm.

Figure 1.9 Motor Vehicle Fuel Rates
(Miles per Gallon)



^aMotorcycles are included through 1989.

Web Page: <http://www.eia.doe.gov/emeu/mer/overview.html>.

Source: Table 1.9.

Table 1.9 Motor Vehicle Mileage, Fuel Consumption, and Fuel Rates

	Passenger Cars ^a			Vans, Pickup Trucks, and Sport Utility Vehicles ^b			Trucks ^c			All Motor Vehicles ^d		
	Mileage (miles per vehicle)	Fuel Consumption (gallons per vehicle)	Fuel Rate (miles per gallon)	Mileage (miles per vehicle)	Fuel Consumption (gallons per vehicle)	Fuel Rate (miles per gallon)	Mileage (miles per vehicle)	Fuel Consumption (gallons per vehicle)	Fuel Rate (miles per gallon)	Mileage (miles per vehicle)	Fuel Consumption (gallons per vehicle)	Fuel Rate (miles per gallon)
1973	9,884	737	13.4	9,779	931	10.5	15,370	2,775	5.5	10,099	850	11.9
1974	9,221	677	13.6	9,452	862	11.0	14,995	2,708	5.5	9,493	788	12.0
1975	9,309	665	14.0	9,829	934	10.5	15,167	2,722	5.6	9,627	790	12.2
1976	9,418	681	13.8	10,127	934	10.8	15,438	2,764	5.6	9,774	806	12.1
1977	9,517	676	14.1	10,607	947	11.2	16,700	3,002	5.6	9,978	814	12.3
1978	9,500	665	14.3	10,968	948	11.6	18,045	3,263	5.5	10,077	816	12.4
1979	9,062	620	14.6	10,802	905	11.9	18,502	3,380	5.5	9,722	776	12.5
1980	8,813	551	16.0	10,437	854	12.2	18,736	3,447	5.4	9,458	712	13.3
1981	8,873	538	16.5	10,244	819	12.5	19,016	3,565	5.3	9,477	697	13.6
1982	9,050	535	16.9	10,276	762	13.5	19,931	3,647	5.5	9,644	686	14.1
1983	9,118	534	17.1	10,497	767	13.7	21,083	3,769	5.6	9,760	686	14.2
1984	9,248	530	17.4	11,151	797	14.0	22,550	3,967	5.7	10,017	691	14.5
1985	9,419	538	17.5	10,506	735	14.3	20,597	3,570	5.8	10,020	685	14.6
1986	9,464	543	17.4	10,764	738	14.6	22,143	3,821	5.8	10,143	692	14.7
1987	9,720	539	18.0	11,114	744	14.9	23,349	3,937	5.9	10,453	694	15.1
1988	9,972	531	18.8	11,465	745	15.4	22,485	3,736	6.0	10,721	688	15.6
1989	^a 10,157	^a 533	^a 19.0	11,676	724	16.1	22,926	3,776	6.1	10,932	688	15.9
1990	10,504	520	20.2	11,902	738	16.1	23,603	3,953	6.0	11,107	677	16.4
1991	10,571	501	21.1	12,245	721	17.0	24,229	4,047	6.0	11,294	669	16.9
1992	10,857	517	21.0	12,381	717	17.3	25,373	4,210	6.0	11,558	683	16.9
1993	10,804	527	20.5	12,430	714	17.4	26,262	4,309	6.1	11,595	693	16.7
1994	10,992	531	20.7	12,156	701	17.3	25,838	4,202	6.1	11,683	698	16.7
1995	11,203	530	21.1	12,018	694	17.3	26,514	4,315	6.1	11,793	700	16.8
1996	11,330	534	21.2	11,811	685	17.2	26,092	4,221	6.2	11,813	700	16.9
1997	11,581	539	21.5	12,115	703	17.2	27,032	4,218	6.4	12,107	711	17.0
1998	11,754	544	21.6	12,173	707	17.2	25,397	4,135	6.1	12,211	721	16.9
1999	11,848	553	21.4	11,957	701	17.0	26,014	4,352	6.0	12,206	732	16.7
2000	11,976	547	21.9	11,672	669	17.4	25,617	4,391	5.8	12,164	720	16.9
2001	11,831	534	22.1	11,204	636	17.6	26,602	4,477	5.9	11,887	695	17.1
2002 ^P	12,203	551	22.1	11,365	645	17.6	27,062	4,637	5.8	12,172	715	17.0

^a Through 1989, includes motorcycles.

^b Includes a small number of trucks with 2 axles and 4 tires, such as step vans.

^c Single-unit trucks with 2 axles and 6 or more tires, and combination trucks.

^d Includes buses and motorcycles, which are not shown separately.

P=Preliminary.

Notes: Geographic coverage is the 50 States and the District of Columbia.

Web Page: <http://www.eia.doe.gov/emeu/mer/overview.html>.

Sources: • **Passenger Cars, 1990-1994:** U.S. Department of Transportation, Bureau of Transportation Statistics, *National Transportation Statistics 1998*, Table 4-13. • **All Other Data:** • **1973-1994**—Federal Highway Administration (FHWA), *Highway Statistics Summary to 1995*, Table VM-201A. • **1995 forward**—FHWA, *Highway Statistics*, annual reports, Table VM-1.

Table 1.10 Heating Degree-Days by Census Division

Census Divisions	September 1 through September 30					Cumulative July 1 through September 30				
	Normal ^a	2003	2004	Percent Change		Normal ^a	2003	2004	Percent Change	
				Normal to 2004	2003 to 2004				Normal to 2004	2003 to 2004
New England Connecticut, Maine, Massachusetts, New Hampshire, Rhode Island, Vermont	153	85	106	-31	25	190	100	129	-32	29
Middle Atlantic New Jersey, New York, Pennsylvania	105	43	33	-69	-23	127	44	37	-71	-16
East North Central Illinois, Indiana, Michigan, Ohio, Wisconsin	121	124	63	-48	-49	156	134	120	-23	-10
West North Central Iowa, Kansas, Minnesota, Missouri, Nebraska, North Dakota, South Dakota	139	156	68	-51	-56	183	166	151	-17	-9
South Atlantic Delaware, Florida, Georgia, Maryland and the District of Columbia, North Carolina, South Carolina, Virginia, West Virginia	24	15	7	(^c)	(^c)	25	15	8	(^c)	(^c)
East South Central Alabama, Kentucky, Mississippi, Tennessee	32	37	15	(^c)	(^c)	33	36	22	(^c)	(^c)
West South Central Arkansas, Louisiana, Oklahoma, Texas	9	9	1	(^c)	(^c)	9	9	3	(^c)	(^c)
Mountain Arizona, Colorado, Idaho, Montana, Nevada, New Mexico, Utah, Wyoming	134	122	116	-13	-5	183	131	161	-12	23
Pacific^b California, Oregon, Washington	62	25	46	(^c)	(^c)	108	29	53	-51	83
U.S. Average^b	77	59	42	(^c)	(^c)	101	63	63	-38	0

^a "Normal" is based on calculations of data from 1971 through 2000.

^b Excludes Alaska and Hawaii.

^c Percent change is not meaningful: normal is less than 100 or ratio is incalculable.

Notes: Degree-days are relative measurements of outdoor air temperature used as an index for heating and cooling energy requirements. Heating degree-days are the number of degrees that the daily average temperature falls below 65° F. Cooling degree-days are the number of degrees that the daily average temperature rises above 65° F. The daily average temperature is the mean of the maximum and minimum temperatures in a 24-hour period.

For example, a weather station recording an average daily temperature of 40° F would report 25 heating degree-days for that day (and 0 cooling degree-days). If a weather station recorded an average daily temperature of 78° F, cooling degree-days for that station would be 13 (and 0 heating degree days).

Web Pages: • See <http://www.eia.doe.gov/emeu/mer/overview.html> for current data. • See <http://www.eia.doe.gov/emeu/aer/overview.html> for historical data.

Sources: See end of section.

Table 1.11 Cooling Degree-Days by Census Division

Census Divisions	September 1 through September 30					Cumulative January 1 through September 30				
	Normal ^a	2003	2004	Percent Change		Normal ^a	2003	2004	Percent Change	
				Normal to 2004	2003 to 2004				Normal to 2004	2003 to 2004
New England Connecticut, Maine, Massachusetts, New Hampshire, Rhode Island, Vermont	22	21	31	(^c)	(^c)	417	502	401	-4	-20
Middle Atlantic New Jersey, New York, Pennsylvania	59	45	65	(^c)	(^c)	651	662	629	-3	-5
East North Central Illinois, Indiana, Michigan, Ohio, Wisconsin	60	55	87	(^c)	(^c)	700	630	587	-16	-7
West North Central Iowa, Kansas, Minnesota, Missouri, Nebraska, North Dakota, South Dakota	87	69	126	(^c)	(^c)	916	941	762	-17	-19
South Atlantic Delaware, Florida, Georgia, Maryland and the District of Columbia, North Carolina, South Carolina, Virginia, West Virginia	259	261	278	7	7	1,757	1,784	1,873	7	5
East South Central Alabama, Kentucky, Mississippi, Tennessee	209	198	232	11	17	1,487	1,446	1,522	2	5
West South Central Arkansas, Louisiana, Oklahoma, Texas	345	300	376	9	25	2,275	2,351	2,257	-1	-4
Mountain Arizona, Colorado, Idaho, Montana, Nevada, New Mexico, Utah, Wyoming	167	212	190	14	-10	1,184	1,500	1,349	14	-10
Pacific^b California, Oregon, Washington	125	168	155	24	-8	663	812	842	27	4
U.S. Average^b	155	155	178	15	15	1,141	1,192	1,168	2	-2

^a "Normal" is based on calculations of data from 1971 through 2000.

^b Excludes Alaska and Hawaii.

^c Percent change is not meaningful: normal is less than 100 or ratio is incalculable.

(s)=Less than 0.5 percent and greater than -0.5 percent.

Notes: Degree-days are relative measurements of outdoor air temperature used as an index for heating and cooling energy requirements. Cooling degree-days are the number of degrees that the daily average temperature rises above 65° F. Heating degree-days are the number of degrees that the daily average temperature falls below 65° F. The daily average temperature

is the mean of the maximum and minimum temperatures in a 24-hour period. For example, if a weather station recorded an average daily temperature of 78° F, cooling degree-days for that station would be 13 (and 0 heating degree-days). A weather station recording an average daily temperature of 40° F would report 25 heating degree-days for that day (and 0 cooling degree-days).

Web Pages: • See <http://www.eia.doe.gov/emeu/mer/overview.html> for current data. • See <http://www.eia.doe.gov/emeu/aer/overview.html> for historical data.

Sources: See end of section.

Energy Overview

Note 1. Energy Production: Includes production of fossil fuels (coal, dry natural gas, crude oil and lease condensate, and natural gas plant liquids), nuclear electric power, pumped-storage hydroelectric power, and renewable energy. Renewable energy production is assumed to be equivalent to: end-use consumption of wood, waste, alcohol fuels, geothermal heat pump and direct use energy, and solar thermal direct use and photovoltaic energy; and electricity net generation from conventional hydroelectric power, wood, waste, geothermal, solar, and wind. Approximate heat contents (Btu values) are derived by using the conversion factors provided in Appendix A. See Section 10 for further information on renewable energy.

Note 2. Energy Consumption: Includes consumption of fossil fuels (coal, natural gas, and petroleum), some secondary energy derived from fossil fuels (supplemental gaseous fuels and coal coke net imports), nuclear electric power, pumped-storage hydroelectric power, renewable energy, and net imports of electricity. Renewable energy consumption includes: end-use consumption of wood, waste, alcohol fuels, geothermal heat pump and direct use energy, and solar thermal direct use and photovoltaic energy and net electricity generation from conventional hydroelectric power, wood, waste, geothermal, solar, and wind. Approximate heat contents (Btu values) are derived by using the conversion factors provided in Appendix A. See Section 10 for further information on renewable energy.

Note 3. Energy Imports: Includes imports of fossil fuels (coal, natural gas, and petroleum, including crude oil imported for the Strategic Petroleum Reserve), some secondary energy derived from fossil fuels (coal coke imports), and electricity. Approximate heat contents (Btu values) are derived by using the conversion factors provided in Appendix A. See Section 10 for further information on renewable energy.

Note 4. Energy Exports: Includes exports of fossil fuels (coal, natural gas, and petroleum), some secondary energy derived from fossil fuels (coal coke exports), and electricity. Approximate heat contents (Btu values) are derived by using the conversion factors provided in Appendix A. See Section 10 for further information on renewable energy.

Note 5. Merchandise Trade Value: Import data presented are based on the customs value. That value does not include insurance and freight and is consequently lower than the cost, insurance, and freight (CIF) value, which is also reported by the Bureau of the Census. All export data, and import data prior to 1981, are on a free alongside ship (f.a.s.) basis.

“Balance” is exports minus imports; a positive balance indicates a surplus trade value and a negative balance indicates a deficit trade value. “Energy” includes mineral

fuels, lubricants, and related material. “Non-Energy Balance” and “Total Merchandise” include foreign exports (i.e., re-exports) and nonmonetary gold and Department of Defense Grant-Aid shipments. The “Non-Energy Balance” is calculated by subtracting the “Energy” from the “Total Merchandise Balance.”

“Imports” consist of government and nongovernment shipments of merchandise into the 50 States, the District of Columbia, Puerto Rico, the U.S. Virgin Islands, and the U.S. Foreign Trade Zones. They reflect the total arrival from foreign countries of merchandise that immediately entered consumption channels, warehouses, the Foreign Trade Zones, or the Strategic Petroleum Reserve. They exclude shipments between the United States, Puerto Rico, and U.S. possessions, shipments to U.S. Armed Forces and diplomatic missions abroad for their own use, U.S. goods returned to the United States by its Armed Forces, and in-transit shipments.

Table 1.5 Sources

U.S. Department of Commerce, Bureau of the Census, Foreign Trade Division:

Petroleum Exports

1974-1987: “U.S. Exports,” FT410, December issues.

1988 and 1989: “Report on U.S. Merchandise Trade,” Final Revisions.

1990-1992: “U.S. Merchandise Trade,” Final Report.

1993-2002: “U.S. International Trade in Goods and Services,” Annual Revision.

2003 and 2004: “U.S. International Trade in Goods and Services,” FT-900, monthly.

Petroleum Imports

1974-1987: “U.S. Merchandise Trade,” FT900, December issues, 1975-1988.

1989: “Report on U.S. Merchandise Trade,” Final Revisions.

1990-1993: “U.S. Merchandise Trade,” Final Report.

1994-2002: “U.S. International Trade in Goods and Services,” Annual Revision.

2003 and 2004: “U.S. International Trade in Goods and Services,” FT-900, monthly.

Energy Exports and Imports

1974-1987: U.S. merchandise trade press releases and database printouts for adjustments.

1988: January-July, monthly FT-900 supplement, 1989 issues. August-December, monthly FT-900, 1989 issues.

1989: Monthly FT-900, 1990 issues.

1990-1992: “U.S. Merchandise Trade,” Final Report.

1993-2002: “U.S. International Trade in Goods and Services,” Annual Revision.

2003 and 2004: “U.S. International Trade in Goods and Services,” FT-900, monthly.

Petroleum, Energy, and Non-Energy Balances

Calculated by the Energy Information Administration.

Total Merchandise

1974-1987: U.S. merchandise trade press releases and database printouts for adjustments.

1988: "Report on U.S. Merchandise Trade, 1988 Final Revisions," August 18, 1989.

1989: "Report on U.S. Merchandise Trade, 1989 Revisions," July 10, 1990.

1990: "U.S. Merchandise Trade, 1990 Final Report," May 10, 1991, and "U.S. Merchandise Trade, December 1992," February 18, 1993, page 3.

1991: "U.S. Merchandise Trade, 1992 Final Report," May 12, 1993.

1992-2002: "U.S. International Trade in Goods and Services," Annual Revision.

2003 and 2004: "U.S. International Trade in Goods and Services," FT-900, monthly.

Tables 1.10 and 1.11 Sources

There are several degree-day databases maintained by the National Oceanic and Atmospheric Administration. The information published here is developed by the National Weather Service Climate Analysis Center, Camp Springs, MD. The data are available weekly with monthly summaries and are based on mean daily temperatures recorded at about 200 major weather stations around the country. The temperature information recorded at those weather stations is used to calculate statewide degree-day averages based on population.

The State figures are then aggregated into Census Divisions and into the national average. The population weights currently used represent resident State population data estimated for the 2000 Census by the U.S. Department of Commerce, Bureau of the Census. The data provided here are available sooner than the Historical Climatology Series 5-1 (heating degree-days) and 5-2 (cooling degree-days) developed by the National Climatic Data Center, Asheville, NC, which compiles data from some 8,000 weather stations.