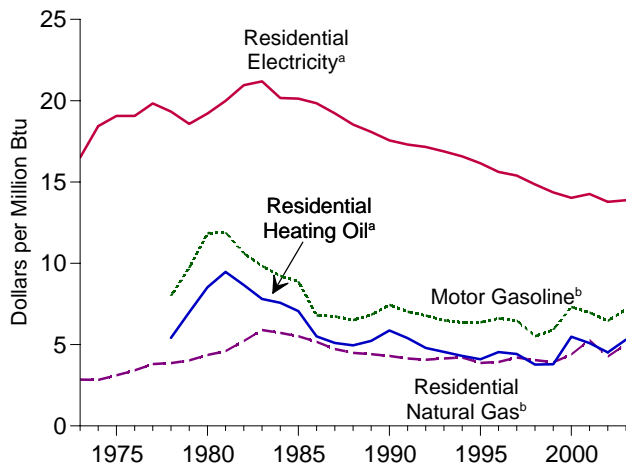
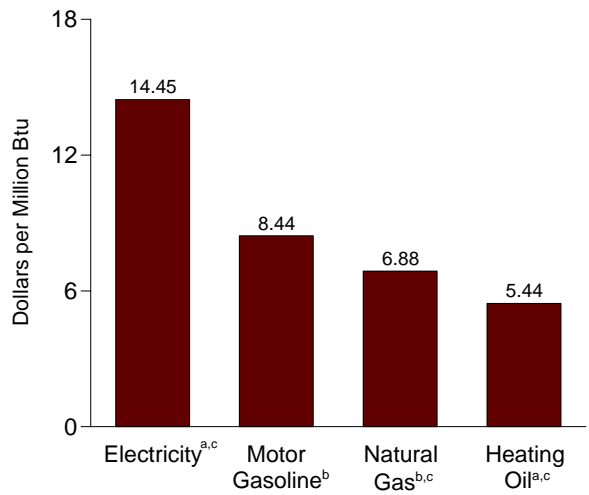


**Figure 1.6 Cost of Fuels to End Users in Constant (1982-1984) Dollars**

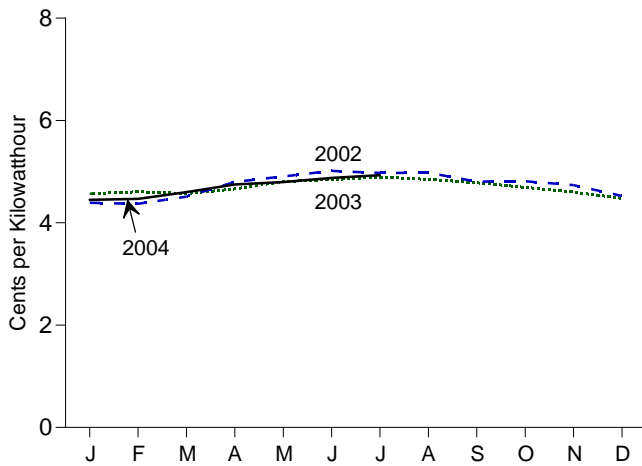
Costs, 1973-2003



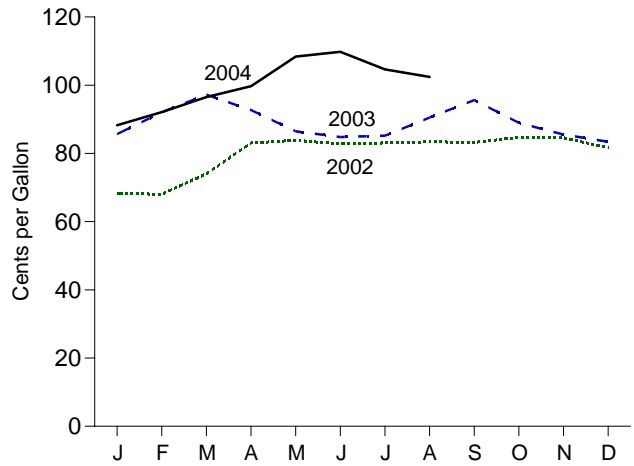
Costs, July 2004



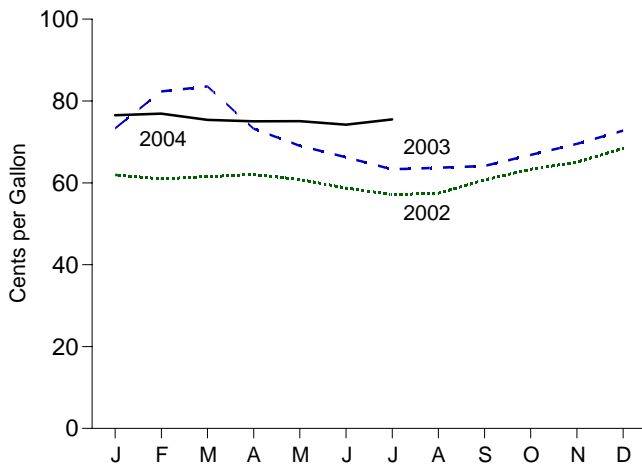
Residential Electricity<sup>a</sup>, Monthly



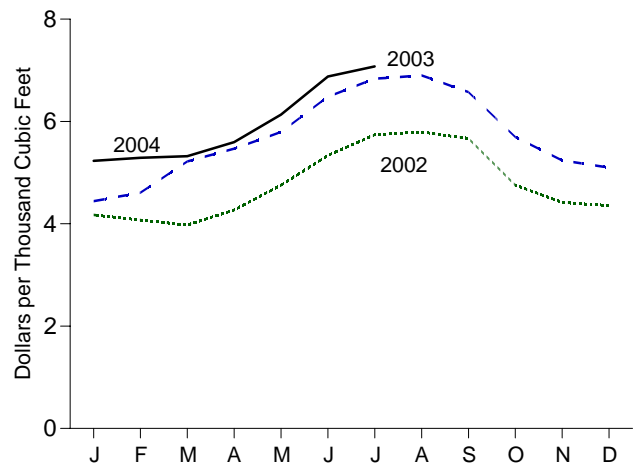
Motor Gasoline<sup>b</sup>, Monthly



Residential Heating Oil<sup>a</sup>, Monthly



Residential Natural Gas<sup>b</sup>, Monthly



<sup>a</sup>Excludes taxes.  
<sup>b</sup>Includes taxes.  
<sup>c</sup>Residential.

Note: Because vertical scales differ, graphs should not be compared.  
 Web Page: <http://www.eai.doe.gov/emeu/mer/overview.html>.  
 Source: Table 1.6.