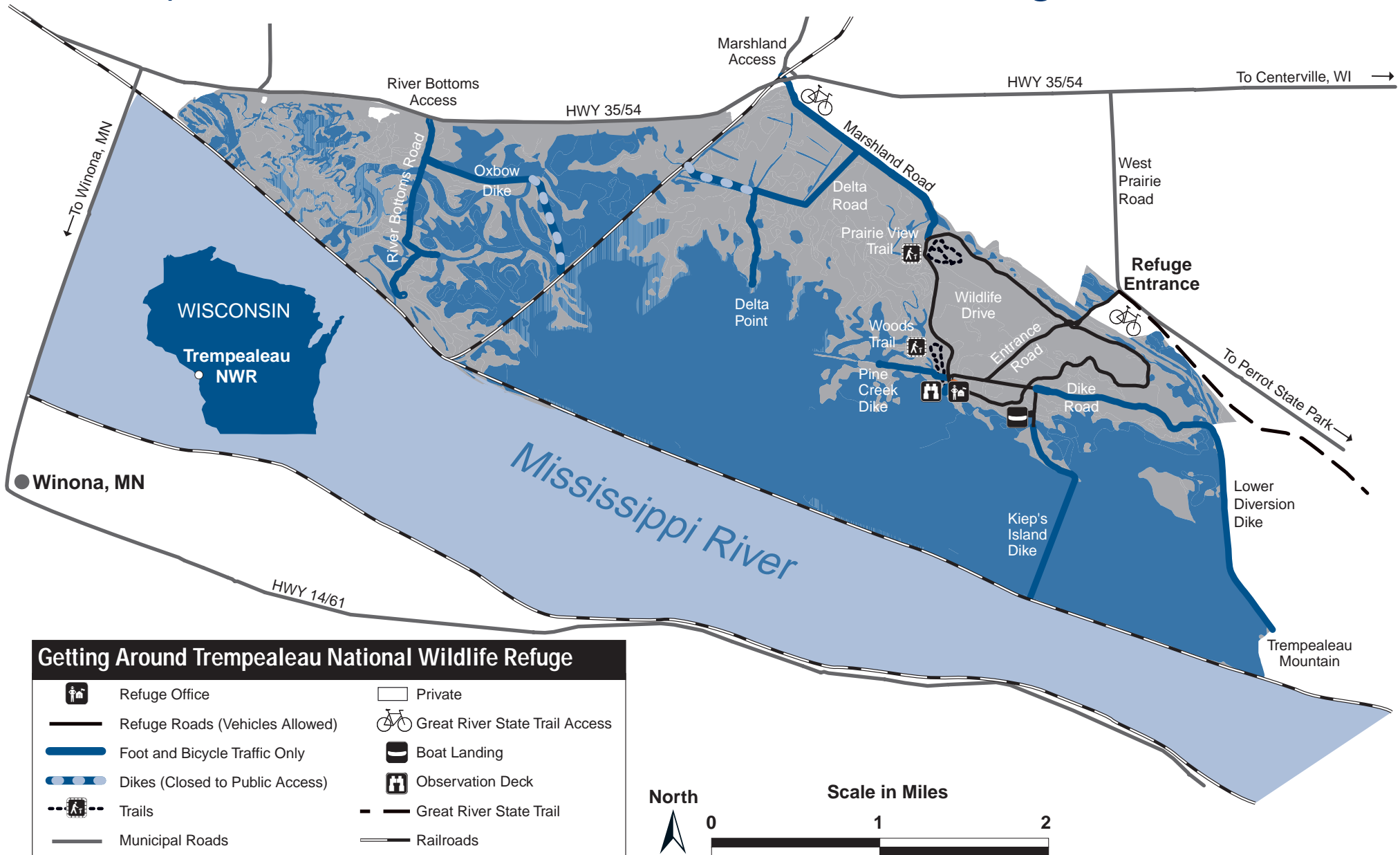


Trempealeau National Wildlife Refuge



Getting Around Trempealeau National Wildlife Refuge

	Refuge Office		Private
	Refuge Roads (Vehicles Allowed)		Great River State Trail Access
	Foot and Bicycle Traffic Only		Boat Landing
	Dikes (Closed to Public Access)		Observation Deck
	Trails		Great River State Trail
	Municipal Roads		Railroads



Scale in Miles



Trempealeau National Wildlife Refuge

Public Use Regulations

The Refuge is Open During Daylight Hours Only



Dogs and other pets must remain on a leash and under control so that they do not disturb wildlife or visitors.



Boats with electric motors and hand-powered craft only.



Wisconsin's inland waters fishing regulations apply.



Vehicles must remain on established roadways.



Bicycles are allowed on established roadways.



Collecting mushrooms, nuts and berries for personal use is allowed. However, collecting natural objects such as plants, animals, antlers and objects of antiquity is prohibited.



Camping is available at Perrot State park and other nearby areas, camping on the refuge is prohibited.



Fires are not allowed.



Carrying, possessing or discharging firearms or any other weapons on the refuge is prohibited, except by licensed and permitted hunters engaged in authorized activities during established seasons.



Horses are prohibited because they can destroy habitat and damage trails and roads.



Off-road vehicles, including snowmobiles, trail bikes and all terrain vehicles are not allowed on any portion of the refuge.



Certain portions of the refuge are closed to entry at all times.