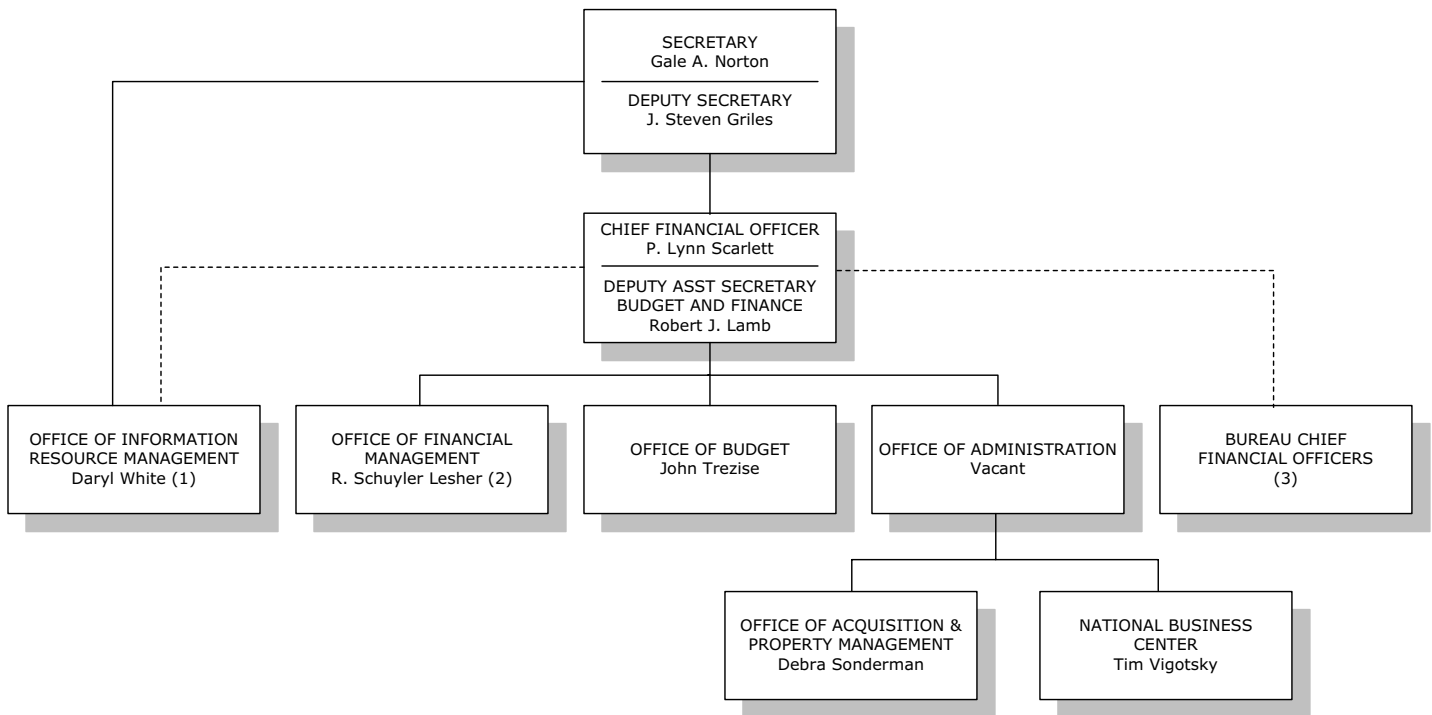


Appendices

**Department of the Interior
Chief Financial Officer
Organization**



- (1) Chief Information Officer - Reports to the Secretary and receives administrative guidance from the Deputy Assistant Secretary for Budget and Finance
- (2) Deputy Chief Financial Officer and Director of Financial Management
- (3) Assistant/Associate Director - Finance and Administration

U.S. Department of the Interior

Chief Financial Officers and Deputy Chief Financial Officers

<p>P. Lynn Scarlett, Chief Financial Officer, DOI Robert J. Lamb, Deputy Assistant Secretary - Budget and Finance, DOI R. Schuyler Leshner, Deputy Chief Financial Officer, DOI Paul Henne, Chief Financial Officer, FWS David Holland, Deputy Chief Financial Officer, FWS Carol Aten, Chief Financial Officer, USGS Jack Blickley, Deputy Chief Financial Officer, USGS Carla Burzyk, Deputy Chief Financial Officer, USGS Bob Doyle, Chief Financial Officer, BLM Betty Buxton, Deputy Chief Financial Officer, BLM Dennis Sykes, Deputy Chief Financial Officer, BLM Bob Brown, Chief Financial Officer, MMS</p>	<p>Don Matheson, Deputy Chief Financial Officer, MMS Debbie Clark, Chief Financial Officer, BIA Deborah Maddox, Deputy Chief Financial Officer, BIA Jeanette Hanna, Deputy Chief Financial Officer, BIA Bruce Scheaffer, Chief Financial Officer, NPS John Madigan, Acting Deputy Chief Financial Officer, NPS Kathy Gordon, Acting Chief Financial Officer, BOR Kathy Gordon, Deputy Chief Financial Officer, BOR Glenda Owens, Chief Financial Officer, OSM Rick Seibel, Deputy Chief Financial Officer, OSM Robert J. Lamb, Chief Financial Officer, OS R. Schuyler Leshner, Deputy CFO - Finance, OS Bernard Topper, Deputy CFO - Budget, OS</p>
---	--

Finance Officers' Partnership

Member	Coordinator	Bureau/Office
Jack Blickley, Chair	Deborah Sykes	USGS
Dennis Sykes	Esther Horst, Associate Chair	BLM
Cynthia Peters	Vacant	OS
Gene Virden	Joe Murphy	BIA
Efraim Escalante	Tom Lab	BOR
Dave Holland	Art Ford	FWS
John Madigan	Vacant	NPS
JoAnn Hagan	Leslie Peabody	OSM
R. Schuyler Leshner	Clarence Smith	PFM
Karen Baker	Dee Huitt	MMS
Jerry Harjo	Vacant	OTFM

KEY:

DOI - Department of the Interior
 BIA - Bureau of Indian Affairs
 BLM - Bureau of Land Management
 BOR - Bureau of Reclamation
 FWS - Fish and Wildlife Service
 USGS - U.S. Geological Survey
 MMS - Minerals Management Service
 NPS - National Park Service
 OSM - Office of Surface Mining
 OS - Office of the Secretary
 OTFM - Office of Trust Funds Management