

**Estimated Cases of Dementia in VA Enrollee Population
All Levels of Severity**

FY 2002

| Ages | Men | | | Women | | | Total | | |
|--------------|---------|---------|---------|--------|-------|-------|---------|---------|---------|
| | Middle | Low | High | Middle | Low | High | Middle | Low | High |
| 65-69 | 8,499 | 6,626 | 11,477 | 132 | 103 | 178 | 8,631 | 6,729 | 11,655 |
| 70-74 | 20,971 | 17,007 | 24,933 | 215 | 174 | 255 | 21,185 | 17,181 | 25,188 |
| 75-79 | 28,900 | 24,246 | 31,261 | 711 | 596 | 769 | 29,611 | 24,843 | 32,030 |
| 80-84 | 44,028 | 34,480 | 52,910 | 1,554 | 1,217 | 1,868 | 45,583 | 35,697 | 54,778 |
| 85+ | 37,365 | 28,482 | 45,367 | 1,292 | 985 | 1,569 | 38,658 | 29,467 | 46,936 |
| Total | 139,763 | 110,841 | 165,949 | 3,904 | 3,075 | 4,639 | 143,667 | 113,917 | 170,588 |

FY 2003

| Ages | Men | | | Women | | | Total | | |
|--------------|---------|---------|---------|--------|-------|-------|---------|---------|---------|
| | Middle | Low | High | Middle | Low | High | Middle | Low | High |
| 65-69 | 8,420 | 6,564 | 11,370 | 147 | 114 | 198 | 8,566 | 6,679 | 11,568 |
| 70-74 | 22,636 | 18,358 | 26,914 | 291 | 236 | 346 | 22,927 | 18,594 | 27,260 |
| 75-79 | 29,921 | 25,103 | 32,366 | 586 | 492 | 634 | 30,507 | 25,595 | 32,999 |
| 80-84 | 50,491 | 39,541 | 60,677 | 2,169 | 1,698 | 2,606 | 52,660 | 41,239 | 63,283 |
| 85+ | 47,959 | 36,557 | 58,229 | 1,894 | 1,444 | 2,300 | 49,853 | 38,001 | 60,529 |
| Total | 159,427 | 126,123 | 189,556 | 5,086 | 3,984 | 6,084 | 164,514 | 130,107 | 195,640 |

FY 2004

| Ages | Men | | | Women | | | Total | | |
|--------------|---------|---------|---------|--------|-------|-------|---------|---------|---------|
| | Middle | Low | High | Middle | Low | High | Middle | Low | High |
| 65-69 | 8,219 | 6,408 | 11,099 | 155 | 121 | 209 | 8,374 | 6,529 | 11,308 |
| 70-74 | 23,780 | 19,285 | 28,274 | 352 | 286 | 419 | 24,133 | 19,571 | 28,693 |
| 75-79 | 29,777 | 24,982 | 32,209 | 421 | 353 | 455 | 30,197 | 25,335 | 32,664 |
| 80-84 | 55,298 | 43,306 | 66,454 | 2,678 | 2,097 | 3,218 | 57,976 | 45,403 | 69,672 |
| 85+ | 60,113 | 45,822 | 72,987 | 2,579 | 1,966 | 3,131 | 62,692 | 47,787 | 76,118 |
| Total | 177,188 | 139,803 | 211,023 | 6,184 | 4,822 | 7,432 | 183,372 | 144,625 | 218,455 |

FY 2005

| Ages | Men | | | Women | | | Total | | |
|--------------|---------|---------|---------|--------|-------|-------|---------|---------|---------|
| | Middle | Low | High | Middle | Low | High | Middle | Low | High |
| 65-69 | 8,065 | 6,288 | 10,891 | 165 | 129 | 223 | 8,230 | 6,416 | 11,114 |
| 70-74 | 24,148 | 19,584 | 28,711 | 398 | 323 | 473 | 24,546 | 19,906 | 29,184 |
| 75-79 | 29,624 | 24,853 | 32,044 | 346 | 291 | 375 | 29,970 | 25,144 | 32,418 |
| 80-84 | 59,206 | 46,366 | 71,150 | 2,852 | 2,233 | 3,427 | 62,058 | 48,600 | 74,577 |
| 85+ | 73,313 | 55,883 | 89,013 | 3,421 | 2,608 | 4,154 | 76,734 | 58,491 | 93,167 |
| Total | 194,356 | 152,974 | 231,809 | 7,182 | 5,583 | 8,651 | 201,538 | 158,557 | 240,460 |

FY 2006

| Ages | Men | | | Women | | | Total | | |
|--------------|---------|---------|---------|--------|-------|-------|---------|---------|---------|
| | Middle | Low | High | Middle | Low | High | Middle | Low | High |
| 65-69 | 7,990 | 6,229 | 10,790 | 176 | 138 | 238 | 8,166 | 6,367 | 11,028 |
| 70-74 | 23,746 | 19,258 | 28,234 | 427 | 346 | 508 | 24,174 | 19,604 | 28,742 |
| 75-79 | 29,848 | 25,041 | 32,286 | 390 | 328 | 422 | 30,238 | 25,369 | 32,708 |
| 80-84 | 61,731 | 48,343 | 74,184 | 2,588 | 2,027 | 3,110 | 64,319 | 50,370 | 77,294 |
| 85+ | 87,002 | 66,318 | 105,634 | 4,528 | 3,452 | 5,498 | 91,531 | 69,770 | 111,132 |
| Total | 210,317 | 165,190 | 251,128 | 8,110 | 6,290 | 9,776 | 218,427 | 171,480 | 260,904 |

FY 2007

| Ages | Men | | | Women | | | Total | | |
|--------------|---------|---------|---------|--------|-------|--------|---------|---------|---------|
| | Middle | Low | High | Middle | Low | High | Middle | Low | High |
| 65-69 | 8,072 | 6,294 | 10,901 | 189 | 148 | 256 | 8,262 | 6,441 | 11,157 |
| 70-74 | 23,035 | 18,681 | 27,388 | 447 | 363 | 532 | 23,482 | 19,044 | 27,920 |
| 75-79 | 30,273 | 25,398 | 32,746 | 460 | 386 | 497 | 30,733 | 25,784 | 33,244 |
| 80-84 | 62,702 | 49,104 | 75,351 | 2,131 | 1,669 | 2,561 | 64,833 | 50,773 | 77,912 |
| 85+ | 101,042 | 77,020 | 122,680 | 5,875 | 4,478 | 7,133 | 106,917 | 81,498 | 129,814 |
| Total | 225,125 | 176,497 | 269,067 | 9,103 | 7,043 | 10,979 | 234,228 | 183,540 | 280,047 |

FY 2008

| Ages | Men | | | Women | | | Total | | |
|--------------|---------|---------|---------|--------|-------|--------|---------|---------|---------|
| | Middle | Low | High | Middle | Low | High | Middle | Low | High |
| 65-69 | 8,402 | 6,550 | 11,346 | 205 | 160 | 277 | 8,607 | 6,711 | 11,623 |
| 70-74 | 22,226 | 18,025 | 26,426 | 463 | 376 | 551 | 22,690 | 18,401 | 26,977 |
| 75-79 | 30,845 | 25,878 | 33,365 | 524 | 440 | 567 | 31,369 | 26,318 | 33,932 |
| 80-84 | 63,075 | 49,396 | 75,800 | 1,654 | 1,295 | 1,987 | 64,729 | 50,691 | 77,787 |
| 85+ | 112,621 | 85,846 | 136,739 | 7,176 | 5,470 | 8,713 | 119,797 | 91,316 | 145,452 |
| Total | 237,170 | 185,696 | 283,677 | 10,022 | 7,740 | 12,095 | 247,192 | 193,437 | 295,771 |

FY 2009

| Ages | Men | | | Women | | | Total | | |
|--------------|---------|---------|---------|--------|-------|--------|---------|---------|---------|
| | Middle | Low | High | Middle | Low | High | Middle | Low | High |
| 65-69 | 8,855 | 6,904 | 11,958 | 225 | 176 | 304 | 9,080 | 7,080 | 12,262 |
| 70-74 | 21,584 | 17,505 | 25,663 | 475 | 385 | 564 | 22,059 | 17,889 | 26,227 |
| 75-79 | 31,376 | 26,324 | 33,939 | 582 | 488 | 629 | 31,958 | 26,811 | 34,568 |
| 80-84 | 61,488 | 48,153 | 73,892 | 1,190 | 932 | 1,431 | 62,679 | 49,085 | 75,323 |
| 85+ | 122,730 | 93,552 | 149,013 | 8,302 | 6,328 | 10,080 | 131,032 | 99,880 | 159,093 |
| Total | 246,034 | 192,437 | 294,466 | 10,774 | 8,309 | 13,008 | 256,808 | 200,746 | 307,474 |

FY 2010

| Ages | Men | | | Women | | | Total | | |
|--------------|---------|---------|---------|--------|-------|--------|---------|---------|---------|
| | Middle | Low | High | Middle | Low | High | Middle | Low | High |
| 65-69 | 9,472 | 7,385 | 12,791 | 245 | 191 | 330 | 9,717 | 7,576 | 13,122 |
| 70-74 | 21,050 | 17,071 | 25,028 | 494 | 400 | 587 | 21,544 | 17,472 | 25,615 |
| 75-79 | 31,080 | 26,075 | 33,619 | 618 | 518 | 668 | 31,697 | 26,593 | 34,287 |
| 80-84 | 60,288 | 47,214 | 72,450 | 981 | 769 | 1,179 | 61,270 | 47,982 | 73,630 |
| 85+ | 132,312 | 100,855 | 160,647 | 8,766 | 6,682 | 10,643 | 141,077 | 107,537 | 171,289 |
| Total | 254,202 | 198,600 | 304,535 | 11,103 | 8,559 | 13,408 | 265,305 | 207,160 | 317,943 |

FY 2011

| Ages | Men | | | Women | | | Total | | |
|--------------|---------|---------|---------|--------|-------|--------|---------|---------|---------|
| | Middle | Low | High | Middle | Low | High | Middle | Low | High |
| 65-69 | 10,199 | 7,952 | 13,773 | 265 | 207 | 358 | 10,464 | 8,159 | 14,131 |
| 70-74 | 20,776 | 16,849 | 24,702 | 517 | 419 | 615 | 21,293 | 17,268 | 25,317 |
| 75-79 | 29,903 | 25,088 | 32,346 | 633 | 531 | 685 | 30,537 | 25,619 | 33,031 |
| 80-84 | 60,030 | 47,011 | 72,140 | 1,048 | 820 | 1,259 | 61,078 | 47,832 | 73,399 |
| 85+ | 139,654 | 106,452 | 169,561 | 8,477 | 6,462 | 10,293 | 148,131 | 112,914 | 179,854 |
| Total | 260,562 | 203,352 | 312,523 | 10,941 | 8,440 | 13,210 | 271,503 | 211,792 | 325,732 |

FY 2012

| Ages | Men | | | Women | | | Total | | |
|--------------|---------|---------|---------|--------|-------|--------|---------|---------|---------|
| | Middle | Low | High | Middle | Low | High | Middle | Low | High |
| 65-69 | 11,901 | 9,279 | 16,071 | 309 | 241 | 417 | 12,209 | 9,519 | 16,488 |
| 70-74 | 20,921 | 16,967 | 24,874 | 546 | 442 | 649 | 21,467 | 17,409 | 25,523 |
| 75-79 | 28,573 | 23,972 | 30,907 | 642 | 538 | 694 | 29,214 | 24,510 | 31,601 |
| 80-84 | 60,035 | 47,015 | 72,146 | 1,173 | 919 | 1,410 | 61,209 | 47,934 | 73,556 |
| 85+ | 145,114 | 110,614 | 176,191 | 8,027 | 6,118 | 9,746 | 153,141 | 116,732 | 185,936 |
| Total | 266,544 | 207,846 | 320,190 | 10,696 | 8,258 | 12,915 | 277,240 | 216,105 | 333,105 |

FY 2013

| Ages | Men | | | Women | | | Total | | |
|--------------|---------|---------|---------|--------|-------|--------|---------|---------|---------|
| | Middle | Low | High | Middle | Low | High | Middle | Low | High |
| 65-69 | 13,342 | 10,402 | 18,017 | 360 | 280 | 486 | 13,701 | 10,683 | 18,503 |
| 70-74 | 21,659 | 17,565 | 25,752 | 578 | 469 | 687 | 22,237 | 18,034 | 26,440 |
| 75-79 | 27,372 | 22,964 | 29,608 | 651 | 547 | 705 | 28,023 | 23,511 | 30,313 |
| 80-84 | 60,120 | 47,082 | 72,248 | 1,281 | 1,003 | 1,539 | 61,401 | 48,085 | 73,787 |
| 85+ | 148,794 | 113,419 | 180,658 | 7,583 | 5,780 | 9,207 | 156,377 | 119,199 | 189,865 |
| Total | 271,287 | 211,432 | 326,284 | 10,453 | 8,079 | 12,623 | 281,740 | 219,511 | 338,908 |

FY 2014

| Ages | Men | | | Women | | | Total | | |
|--------------|---------|---------|---------|--------|-------|--------|---------|---------|---------|
| | Middle | Low | High | Middle | Low | High | Middle | Low | High |
| 65-69 | 14,333 | 11,175 | 19,356 | 407 | 318 | 550 | 14,740 | 11,492 | 19,906 |
| 70-74 | 22,612 | 18,338 | 26,885 | 623 | 505 | 741 | 23,235 | 18,843 | 27,626 |
| 75-79 | 26,415 | 22,161 | 28,573 | 656 | 550 | 709 | 27,071 | 22,711 | 29,282 |
| 80-84 | 60,222 | 47,161 | 72,370 | 1,372 | 1,074 | 1,649 | 61,594 | 48,236 | 74,019 |
| 85+ | 148,030 | 112,837 | 179,731 | 7,096 | 5,409 | 8,616 | 155,127 | 118,246 | 188,347 |
| Total | 271,612 | 211,672 | 326,915 | 10,155 | 7,857 | 12,265 | 281,766 | 219,529 | 339,180 |

FY 2015

| Ages | Men | | | Women | | | Total | | |
|--------------|---------|---------|---------|--------|-------|--------|---------|---------|---------|
| | Middle | Low | High | Middle | Low | High | Middle | Low | High |
| 65-69 | 14,833 | 11,565 | 20,031 | 463 | 361 | 626 | 15,296 | 11,926 | 20,656 |
| 70-74 | 23,907 | 19,388 | 28,424 | 664 | 538 | 789 | 24,571 | 19,926 | 29,214 |
| 75-79 | 25,613 | 21,489 | 27,706 | 672 | 564 | 727 | 26,285 | 22,052 | 28,432 |
| 80-84 | 58,970 | 46,181 | 70,867 | 1,419 | 1,112 | 1,706 | 60,390 | 47,293 | 72,572 |
| 85+ | 148,433 | 113,144 | 180,220 | 6,714 | 5,118 | 8,152 | 155,148 | 118,262 | 188,373 |
| Total | 271,756 | 211,767 | 327,248 | 9,933 | 7,693 | 12,000 | 281,689 | 219,460 | 339,248 |

FY 2016

| Ages | Men | | | Women | | | Total | | |
|--------------|---------|---------|---------|--------|-------|--------|---------|---------|---------|
| | Middle | Low | High | Middle | Low | High | Middle | Low | High |
| 65-69 | 14,692 | 11,455 | 19,840 | 531 | 414 | 717 | 15,223 | 11,869 | 20,557 |
| 70-74 | 25,368 | 20,573 | 30,161 | 705 | 571 | 838 | 26,072 | 21,144 | 30,999 |
| 75-79 | 25,162 | 21,110 | 27,218 | 695 | 583 | 752 | 25,857 | 21,693 | 27,970 |
| 80-84 | 56,134 | 43,960 | 67,458 | 1,425 | 1,116 | 1,713 | 57,560 | 45,077 | 69,171 |
| 85+ | 149,485 | 113,946 | 181,498 | 6,389 | 4,870 | 7,758 | 155,874 | 118,816 | 189,255 |
| Total | 270,841 | 211,044 | 326,175 | 9,745 | 7,555 | 11,777 | 280,586 | 218,598 | 337,952 |

FY 2017

| Ages | Men | | | Women | | | Total | | |
|--------------|---------|---------|---------|--------|-------|--------|---------|---------|---------|
| | Middle | Low | High | Middle | Low | High | Middle | Low | High |
| 65-69 | 13,010 | 10,144 | 17,570 | 579 | 452 | 782 | 13,589 | 10,595 | 18,352 |
| 70-74 | 29,330 | 23,786 | 34,873 | 805 | 653 | 957 | 30,136 | 24,439 | 35,830 |
| 75-79 | 25,267 | 21,198 | 27,331 | 727 | 610 | 786 | 25,994 | 21,808 | 28,117 |
| 80-84 | 53,296 | 41,737 | 64,047 | 1,422 | 1,114 | 1,709 | 54,718 | 42,851 | 65,756 |
| 85+ | 150,219 | 114,505 | 182,389 | 6,131 | 4,674 | 7,445 | 156,351 | 119,179 | 189,834 |
| Total | 271,123 | 211,371 | 326,210 | 9,664 | 7,502 | 11,679 | 280,787 | 218,873 | 337,889 |

FY 2018

| Ages | Men | | | Women | | | Total | | |
|--------------|---------|---------|---------|--------|-------|--------|---------|---------|---------|
| | Middle | Low | High | Middle | Low | High | Middle | Low | High |
| 65-69 | 11,351 | 8,850 | 15,329 | 638 | 497 | 861 | 11,989 | 9,347 | 16,190 |
| 70-74 | 32,478 | 26,339 | 38,615 | 922 | 748 | 1,096 | 33,400 | 27,087 | 39,712 |
| 75-79 | 26,122 | 21,915 | 28,256 | 762 | 639 | 824 | 26,883 | 22,554 | 29,079 |
| 80-84 | 51,011 | 39,948 | 61,301 | 1,430 | 1,120 | 1,719 | 52,441 | 41,068 | 63,020 |
| 85+ | 150,414 | 114,653 | 182,625 | 5,900 | 4,497 | 7,163 | 156,314 | 119,151 | 189,788 |
| Total | 271,375 | 211,706 | 326,126 | 9,652 | 7,502 | 11,664 | 281,027 | 219,207 | 337,790 |

FY 2019

| Ages | Men | | | Women | | | Total | | |
|--------------|---------|---------|---------|--------|-------|--------|---------|---------|---------|
| | Middle | Low | High | Middle | Low | High | Middle | Low | High |
| 65-69 | 10,001 | 7,797 | 13,506 | 723 | 564 | 976 | 10,724 | 8,361 | 14,482 |
| 70-74 | 34,380 | 27,881 | 40,876 | 1,029 | 834 | 1,223 | 35,408 | 28,716 | 42,099 |
| 75-79 | 27,159 | 22,786 | 29,378 | 814 | 683 | 881 | 27,973 | 23,469 | 30,259 |
| 80-84 | 49,169 | 38,506 | 59,088 | 1,426 | 1,117 | 1,713 | 50,595 | 39,622 | 60,801 |
| 85+ | 148,354 | 113,083 | 180,124 | 5,658 | 4,313 | 6,869 | 154,012 | 117,396 | 186,994 |
| Total | 269,063 | 210,054 | 322,972 | 9,649 | 7,510 | 11,662 | 278,712 | 217,564 | 334,635 |

FY 2020

| Ages | Men | | | Women | | | Total | | |
|--------------|---------|---------|---------|--------|-------|--------|---------|---------|---------|
| | Middle | Low | High | Middle | Low | High | Middle | Low | High |
| 65-69 | 9,022 | 7,034 | 12,183 | 824 | 642 | 1,112 | 9,845 | 7,676 | 13,295 |
| 70-74 | 35,151 | 28,507 | 41,793 | 1,160 | 941 | 1,379 | 36,311 | 29,447 | 43,172 |
| 75-79 | 28,561 | 23,962 | 30,895 | 859 | 720 | 929 | 29,420 | 24,683 | 31,824 |
| 80-84 | 47,636 | 37,305 | 57,246 | 1,451 | 1,137 | 1,744 | 49,087 | 38,442 | 58,990 |
| 85+ | 145,440 | 110,862 | 176,586 | 5,468 | 4,168 | 6,639 | 150,908 | 115,030 | 183,225 |
| Total | 265,810 | 207,670 | 318,703 | 9,761 | 7,608 | 11,803 | 275,571 | 215,278 | 330,506 |

FY 2021

| Ages | Men | | | Women | | | Total | | |
|--------------|---------|---------|---------|--------|-------|--------|---------|---------|---------|
| | Middle | Low | High | Middle | Low | High | Middle | Low | High |
| 65-69 | 8,644 | 6,739 | 11,673 | 933 | 728 | 1,260 | 9,577 | 7,467 | 12,933 |
| 70-74 | 34,436 | 27,927 | 40,943 | 1,319 | 1,069 | 1,568 | 35,755 | 28,997 | 42,511 |
| 75-79 | 30,074 | 25,231 | 32,531 | 902 | 756 | 975 | 30,976 | 25,988 | 33,506 |
| 80-84 | 46,731 | 36,596 | 56,158 | 1,491 | 1,168 | 1,792 | 48,222 | 37,764 | 57,950 |
| 85+ | 140,577 | 107,155 | 170,682 | 5,278 | 4,023 | 6,408 | 145,855 | 111,179 | 177,090 |
| Total | 260,462 | 203,649 | 311,987 | 9,923 | 7,745 | 12,004 | 270,384 | 211,394 | 323,991 |

FY 2022

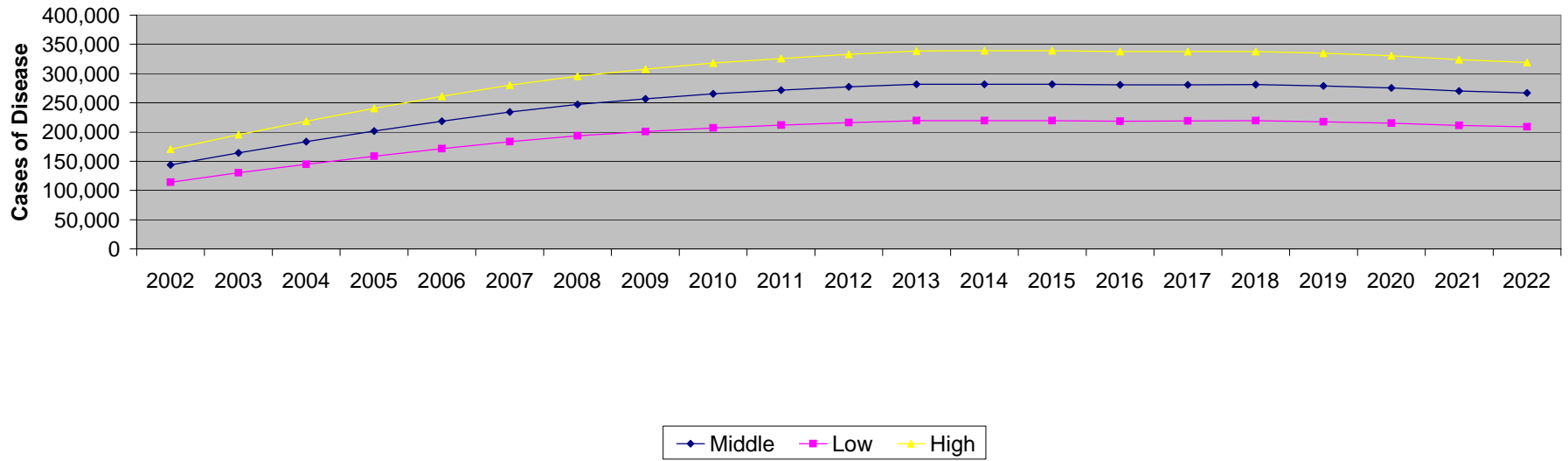
| Ages | Men | | | Women | | | Total | | |
|--------------|---------|---------|---------|--------|-------|--------|---------|---------|---------|
| | Middle | Low | High | Middle | Low | High | Middle | Low | High |
| 65-69 | 8,584 | 6,693 | 11,593 | 1,041 | 812 | 1,406 | 9,626 | 7,505 | 12,999 |
| 70-74 | 30,251 | 24,533 | 35,968 | 1,427 | 1,158 | 1,697 | 31,679 | 25,691 | 37,665 |
| 75-79 | 34,732 | 29,139 | 37,569 | 1,023 | 859 | 1,107 | 35,755 | 29,998 | 38,676 |
| 80-84 | 46,958 | 36,774 | 56,430 | 1,552 | 1,216 | 1,865 | 48,510 | 37,989 | 58,296 |
| 85+ | 136,064 | 103,716 | 165,203 | 5,157 | 3,931 | 6,261 | 141,221 | 107,647 | 171,464 |
| Total | 256,590 | 200,855 | 306,763 | 10,201 | 7,974 | 12,337 | 266,791 | 208,829 | 319,100 |

Estimated Cases of Dementia in VA Enrollee Population

Total Cases (Males + Females) All Levels of Severity

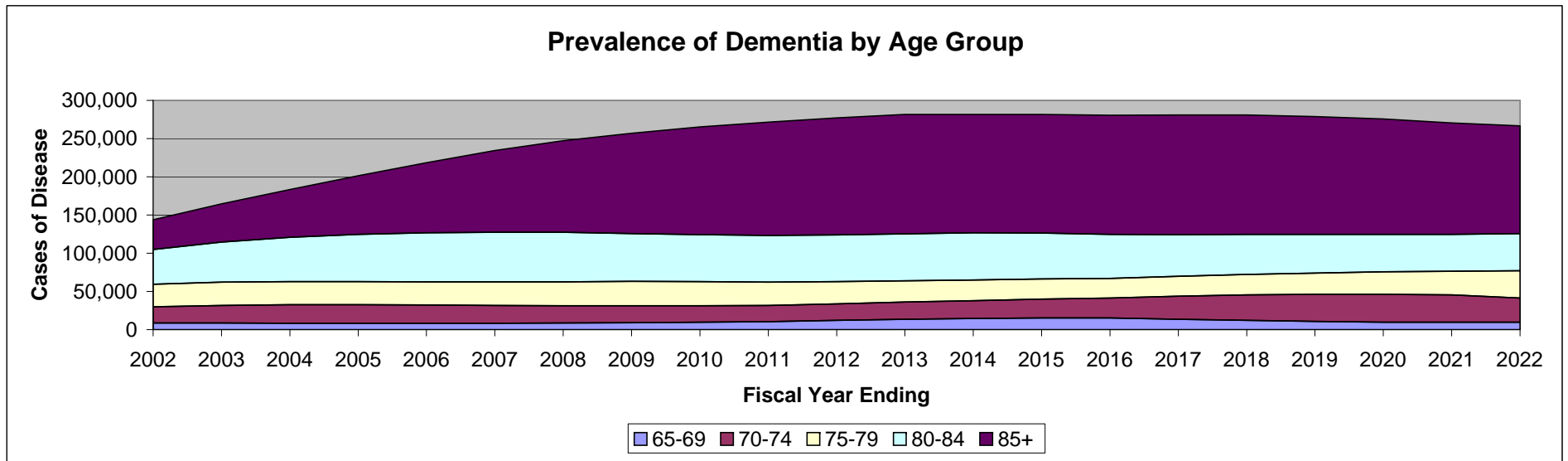
| | 2002 | 2003 | 2004 | 2005 | 2006 | 2007 | 2008 | 2009 | 2010 | 2011 | 2012 | 2013 | 2014 | 2015 | 2016 | 2017 | 2018 | 2019 | 2020 | 2021 | 2022 |
|---------------|---------|---------|---------|---------|---------|---------|---------|---------|---------|---------|---------|---------|---------|---------|---------|---------|---------|---------|---------|---------|---------|
| Middle | 143,667 | 164,514 | 183,372 | 201,538 | 218,427 | 234,228 | 247,192 | 256,808 | 265,305 | 271,503 | 277,240 | 281,740 | 281,766 | 281,689 | 280,586 | 280,787 | 281,027 | 278,712 | 275,571 | 270,384 | 266,791 |
| Low | 113,917 | 130,107 | 144,625 | 158,557 | 171,480 | 183,540 | 193,437 | 200,746 | 207,160 | 211,792 | 216,105 | 219,511 | 219,529 | 219,460 | 218,598 | 218,873 | 219,207 | 217,564 | 215,278 | 211,394 | 208,829 |
| High | 170,588 | 195,640 | 218,455 | 240,460 | 260,904 | 280,047 | 295,771 | 307,474 | 317,943 | 325,732 | 333,105 | 338,908 | 339,180 | 339,248 | 337,952 | 337,889 | 337,790 | 334,635 | 330,506 | 323,991 | 319,100 |

Prevalence of Dementia by Rate



Estimated Cases of Dementia in VA Enrollee Population Middle (Point Estimate) Projection All Levels of Severity

| | 2002 | 2003 | 2004 | 2005 | 2006 | 2007 | 2008 | 2009 | 2010 | 2011 | 2012 | 2013 | 2014 | 2015 | 2016 | 2017 | 2018 | 2019 | 2020 | 2021 | 2022 |
|--------------|--------|--------|--------|--------|--------|---------|---------|---------|---------|---------|---------|---------|---------|---------|---------|---------|---------|---------|---------|---------|---------|
| 65-69 | 8,631 | 8,566 | 8,374 | 8,230 | 8,166 | 8,262 | 8,607 | 9,080 | 9,717 | 10,464 | 12,209 | 13,701 | 14,740 | 15,296 | 15,223 | 13,589 | 11,989 | 10,724 | 9,845 | 9,577 | 9,626 |
| 70-74 | 21,185 | 22,927 | 24,133 | 24,546 | 24,174 | 23,482 | 22,690 | 22,059 | 21,544 | 21,293 | 21,467 | 22,237 | 23,235 | 24,571 | 26,072 | 30,136 | 33,400 | 35,408 | 36,311 | 35,755 | 31,679 |
| 75-79 | 29,611 | 30,507 | 30,197 | 29,970 | 30,238 | 30,733 | 31,369 | 31,958 | 31,697 | 30,537 | 29,214 | 28,023 | 27,071 | 26,285 | 25,857 | 25,994 | 26,883 | 27,973 | 29,420 | 30,976 | 35,755 |
| 80-84 | 45,583 | 52,660 | 57,976 | 62,058 | 64,319 | 64,833 | 64,729 | 62,679 | 61,270 | 61,078 | 61,209 | 61,401 | 61,594 | 60,390 | 57,560 | 54,718 | 52,441 | 50,595 | 49,087 | 48,222 | 48,510 |
| 85+ | 38,658 | 49,853 | 62,692 | 76,734 | 91,531 | 106,917 | 119,797 | 131,032 | 141,077 | 148,131 | 153,141 | 156,377 | 155,127 | 155,148 | 155,874 | 156,351 | 156,314 | 154,012 | 150,908 | 145,855 | 141,221 |



**Estimated Incident Cases of Dementia in VA Enrollee Population
All Levels of Severity**

FY 2002

| Ages | Men | | | Women | | | Total | | |
|--------------|--------|--------|--------|--------|-----|-------|--------|--------|--------|
| | Middle | Low | High | Middle | Low | High | Middle | Low | High |
| 65-69 | 2,667 | 971 | 7,757 | 41 | 15 | 120 | 2,709 | 986 | 7,877 |
| 70-74 | 5,839 | 3,327 | 9,726 | 60 | 34 | 99 | 5,899 | 3,361 | 9,825 |
| 75-79 | 12,978 | 7,391 | 17,404 | 319 | 182 | 428 | 13,297 | 7,573 | 17,832 |
| 80-84 | 17,877 | 11,400 | 23,458 | 631 | 402 | 828 | 18,508 | 11,803 | 24,286 |
| 85+ | 10,580 | 5,251 | 17,922 | 366 | 182 | 620 | 10,946 | 5,432 | 18,542 |
| Total | 49,941 | 28,340 | 76,266 | 1,417 | 815 | 2,096 | 51,358 | 29,155 | 78,362 |

FY 2003

| Ages | Men | | | Women | | | Total | | |
|--------------|--------|--------|--------|--------|-------|-------|--------|--------|--------|
| | Middle | Low | High | Middle | Low | High | Middle | Low | High |
| 65-69 | 2,642 | 962 | 7,685 | 46 | 17 | 134 | 2,688 | 979 | 7,819 |
| 70-74 | 6,303 | 3,592 | 10,498 | 81 | 46 | 135 | 6,384 | 3,638 | 10,633 |
| 75-79 | 13,436 | 7,652 | 18,018 | 263 | 150 | 353 | 13,699 | 7,802 | 18,371 |
| 80-84 | 20,501 | 13,074 | 26,901 | 880 | 561 | 1,155 | 21,381 | 13,635 | 28,057 |
| 85+ | 13,580 | 6,739 | 23,003 | 536 | 266 | 909 | 14,116 | 7,006 | 23,912 |
| Total | 56,462 | 32,019 | 86,106 | 1,807 | 1,040 | 2,686 | 58,269 | 33,059 | 88,791 |

FY 2004

| Ages | Men | | | Women | | | Total | | |
|--------------|--------|--------|--------|--------|-------|-------|--------|--------|--------|
| | Middle | Low | High | Middle | Low | High | Middle | Low | High |
| 65-69 | 2,579 | 939 | 7,502 | 49 | 18 | 141 | 2,628 | 957 | 7,643 |
| 70-74 | 6,621 | 3,773 | 11,029 | 98 | 56 | 163 | 6,719 | 3,829 | 11,192 |
| 75-79 | 13,371 | 7,615 | 17,931 | 189 | 108 | 253 | 13,560 | 7,723 | 18,185 |
| 80-84 | 22,453 | 14,318 | 29,463 | 1,087 | 693 | 1,427 | 23,540 | 15,012 | 30,889 |
| 85+ | 17,021 | 8,447 | 28,833 | 730 | 362 | 1,237 | 17,751 | 8,810 | 30,070 |
| Total | 62,046 | 35,093 | 94,757 | 2,153 | 1,237 | 3,222 | 64,199 | 36,330 | 97,979 |

FY 2005

| Ages | Men | | | Women | | | Middle | Total | |
|--------------|--------|--------|---------|--------|-------|-------|--------|--------|---------|
| | Middle | Low | High | Middle | Low | High | | Low | High |
| 65-69 | 2,531 | 921 | 7,361 | 52 | 19 | 151 | 2,583 | 940 | 7,511 |
| 70-74 | 6,724 | 3,831 | 11,199 | 111 | 63 | 185 | 6,835 | 3,895 | 11,384 |
| 75-79 | 13,302 | 7,576 | 17,839 | 156 | 89 | 209 | 13,458 | 7,665 | 18,048 |
| 80-84 | 24,039 | 15,330 | 31,545 | 1,158 | 738 | 1,520 | 25,197 | 16,068 | 33,064 |
| 85+ | 20,759 | 10,302 | 35,164 | 969 | 481 | 1,641 | 21,727 | 10,783 | 36,805 |
| Total | 67,355 | 37,961 | 103,108 | 2,445 | 1,390 | 3,704 | 69,800 | 39,351 | 106,812 |

FY 2006

| Ages | Men | | | Women | | | Middle | Total | |
|--------------|--------|--------|---------|--------|-------|-------|--------|--------|---------|
| | Middle | Low | High | Middle | Low | High | | Low | High |
| 65-69 | 2,508 | 913 | 7,293 | 55 | 20 | 161 | 2,563 | 933 | 7,454 |
| 70-74 | 6,612 | 3,768 | 11,013 | 119 | 68 | 198 | 6,731 | 3,836 | 11,211 |
| 75-79 | 13,403 | 7,633 | 17,974 | 175 | 100 | 235 | 13,578 | 7,733 | 18,209 |
| 80-84 | 25,064 | 15,984 | 32,890 | 1,051 | 670 | 1,379 | 26,115 | 16,654 | 34,269 |
| 85+ | 24,635 | 12,226 | 41,730 | 1,282 | 636 | 2,172 | 25,917 | 12,862 | 43,902 |
| Total | 72,222 | 40,524 | 110,899 | 2,683 | 1,494 | 4,145 | 74,904 | 42,018 | 115,044 |

FY 2007

| Ages | Men | | | Women | | | Middle | Total | |
|--------------|--------|--------|---------|--------|-------|-------|--------|--------|---------|
| | Middle | Low | High | Middle | Low | High | | Low | High |
| 65-69 | 2,533 | 922 | 7,368 | 59 | 22 | 173 | 2,593 | 944 | 7,541 |
| 70-74 | 6,414 | 3,655 | 10,683 | 124 | 71 | 207 | 6,538 | 3,726 | 10,891 |
| 75-79 | 13,594 | 7,742 | 18,230 | 206 | 118 | 277 | 13,801 | 7,860 | 18,507 |
| 80-84 | 25,459 | 16,235 | 33,407 | 865 | 552 | 1,136 | 26,324 | 16,787 | 34,543 |
| 85+ | 28,610 | 14,199 | 48,464 | 1,664 | 826 | 2,818 | 30,274 | 15,024 | 51,282 |
| Total | 76,610 | 42,753 | 118,153 | 2,919 | 1,588 | 4,611 | 79,529 | 44,341 | 122,763 |

FY 2008

| Ages | Men | | | Women | | | Middle | Total | |
|--------------|--------|--------|---------|--------|-------|-------|--------|--------|---------|
| | Middle | Low | High | Middle | Low | High | | Low | High |
| 65-69 | 2,637 | 960 | 7,668 | 64 | 23 | 187 | 2,701 | 983 | 7,856 |
| 70-74 | 6,189 | 3,527 | 10,308 | 129 | 73 | 215 | 6,318 | 3,600 | 10,523 |
| 75-79 | 13,851 | 7,889 | 18,575 | 235 | 134 | 316 | 14,086 | 8,023 | 18,890 |
| 80-84 | 25,610 | 16,332 | 33,606 | 671 | 428 | 881 | 26,282 | 16,760 | 34,487 |
| 85+ | 31,889 | 15,826 | 54,018 | 2,032 | 1,008 | 3,442 | 33,921 | 16,834 | 57,460 |
| Total | 80,175 | 44,533 | 124,175 | 3,132 | 1,668 | 5,041 | 83,307 | 46,200 | 129,216 |

FY 2009

| Ages | Men | | | Women | | | Middle | Total | |
|--------------|--------|--------|---------|--------|-------|-------|--------|--------|---------|
| | Middle | Low | High | Middle | Low | High | | Low | High |
| 65-69 | 2,779 | 1,012 | 8,082 | 71 | 26 | 206 | 2,850 | 1,037 | 8,288 |
| 70-74 | 6,010 | 3,425 | 10,010 | 132 | 75 | 220 | 6,142 | 3,500 | 10,230 |
| 75-79 | 14,089 | 8,024 | 18,895 | 261 | 149 | 350 | 14,351 | 8,173 | 19,245 |
| 80-84 | 24,966 | 15,921 | 32,760 | 483 | 308 | 634 | 25,449 | 16,229 | 33,395 |
| 85+ | 34,751 | 17,247 | 58,867 | 2,351 | 1,167 | 3,982 | 37,102 | 18,413 | 62,849 |
| Total | 82,595 | 45,628 | 128,614 | 3,298 | 1,725 | 5,392 | 85,893 | 47,353 | 134,006 |

FY 2010

| Ages | Men | | | Women | | | Middle | Total | |
|--------------|--------|--------|---------|--------|-------|-------|--------|--------|---------|
| | Middle | Low | High | Middle | Low | High | | Low | High |
| 65-69 | 2,973 | 1,082 | 8,645 | 77 | 28 | 223 | 3,049 | 1,110 | 8,869 |
| 70-74 | 5,861 | 3,340 | 9,762 | 137 | 78 | 229 | 5,999 | 3,418 | 9,991 |
| 75-79 | 13,956 | 7,949 | 18,716 | 277 | 158 | 372 | 14,234 | 8,107 | 19,088 |
| 80-84 | 24,479 | 15,610 | 32,121 | 398 | 254 | 523 | 24,877 | 15,864 | 32,644 |
| 85+ | 37,464 | 18,593 | 63,462 | 2,482 | 1,232 | 4,204 | 39,946 | 19,825 | 67,667 |
| Total | 84,733 | 46,574 | 132,707 | 3,372 | 1,750 | 5,551 | 88,105 | 48,324 | 138,259 |

FY 2011

| Ages | Men | | | Women | | | Middle | Total | |
|--------------|--------|--------|---------|--------|-------|-------|--------|--------|---------|
| | Middle | Low | High | Middle | Low | High | | Low | High |
| 65-69 | 3,201 | 1,165 | 9,309 | 83 | 30 | 242 | 3,284 | 1,195 | 9,551 |
| 70-74 | 5,785 | 3,296 | 9,635 | 144 | 82 | 240 | 5,929 | 3,378 | 9,875 |
| 75-79 | 13,428 | 7,648 | 18,008 | 284 | 162 | 381 | 13,712 | 7,810 | 18,389 |
| 80-84 | 24,374 | 15,543 | 31,984 | 425 | 271 | 558 | 24,799 | 15,815 | 32,542 |
| 85+ | 39,543 | 19,625 | 66,984 | 2,400 | 1,191 | 4,066 | 41,943 | 20,816 | 71,050 |
| Total | 86,330 | 47,277 | 135,919 | 3,337 | 1,737 | 5,488 | 89,668 | 49,014 | 141,407 |

FY 2012

| Ages | Men | | | Women | | | Middle | Total | |
|--------------|--------|--------|---------|--------|-------|-------|--------|--------|---------|
| | Middle | Low | High | Middle | Low | High | | Low | High |
| 65-69 | 3,735 | 1,360 | 10,862 | 97 | 35 | 282 | 3,832 | 1,395 | 11,144 |
| 70-74 | 5,825 | 3,319 | 9,703 | 152 | 87 | 253 | 5,977 | 3,406 | 9,956 |
| 75-79 | 12,831 | 7,307 | 17,206 | 288 | 164 | 386 | 13,119 | 7,472 | 17,593 |
| 80-84 | 24,376 | 15,545 | 31,986 | 476 | 304 | 625 | 24,852 | 15,849 | 32,611 |
| 85+ | 41,089 | 20,392 | 69,603 | 2,273 | 1,128 | 3,850 | 43,362 | 21,520 | 73,453 |
| Total | 87,856 | 47,923 | 139,360 | 3,286 | 1,718 | 5,396 | 91,142 | 49,641 | 144,756 |

FY 2013

| Ages | Men | | | Women | | | Middle | Total | |
|--------------|--------|--------|---------|--------|-------|-------|--------|--------|---------|
| | Middle | Low | High | Middle | Low | High | | Low | High |
| 65-69 | 4,187 | 1,524 | 12,177 | 113 | 41 | 328 | 4,300 | 1,565 | 12,506 |
| 70-74 | 6,031 | 3,437 | 10,045 | 161 | 92 | 268 | 6,192 | 3,528 | 10,313 |
| 75-79 | 12,291 | 7,000 | 16,483 | 293 | 167 | 392 | 12,584 | 7,167 | 16,876 |
| 80-84 | 24,410 | 15,567 | 32,032 | 520 | 332 | 682 | 24,930 | 15,898 | 32,714 |
| 85+ | 42,131 | 20,909 | 71,368 | 2,147 | 1,066 | 3,637 | 44,278 | 21,975 | 75,005 |
| Total | 89,051 | 48,437 | 142,105 | 3,233 | 1,697 | 5,308 | 92,284 | 50,134 | 147,413 |

FY 2014

| Ages | Men | | | Women | | | Total | | |
|--------------|--------|--------|---------|--------|-------|-------|--------|--------|---------|
| | Middle | Low | High | Middle | Low | High | Middle | Low | High |
| 65-69 | 4,498 | 1,637 | 13,082 | 128 | 47 | 372 | 4,626 | 1,684 | 13,454 |
| 70-74 | 6,296 | 3,588 | 10,487 | 174 | 99 | 289 | 6,470 | 3,687 | 10,776 |
| 75-79 | 11,862 | 6,756 | 15,907 | 294 | 168 | 395 | 12,156 | 6,923 | 16,302 |
| 80-84 | 24,452 | 15,593 | 32,086 | 557 | 355 | 731 | 25,009 | 15,948 | 32,817 |
| 85+ | 41,915 | 20,802 | 71,002 | 2,009 | 997 | 3,404 | 43,924 | 21,799 | 74,405 |
| Total | 89,022 | 48,376 | 142,563 | 3,162 | 1,666 | 5,190 | 92,184 | 50,041 | 147,753 |

FY 2015

| Ages | Men | | | Women | | | Total | | |
|--------------|--------|--------|---------|--------|-------|-------|--------|--------|---------|
| | Middle | Low | High | Middle | Low | High | Middle | Low | High |
| 65-69 | 4,655 | 1,695 | 13,538 | 145 | 53 | 423 | 4,800 | 1,748 | 13,961 |
| 70-74 | 6,657 | 3,793 | 11,087 | 185 | 105 | 308 | 6,841 | 3,899 | 11,395 |
| 75-79 | 11,502 | 6,550 | 15,424 | 302 | 172 | 405 | 11,803 | 6,722 | 15,829 |
| 80-84 | 23,944 | 15,269 | 31,419 | 576 | 368 | 756 | 24,520 | 15,637 | 32,175 |
| 85+ | 42,029 | 20,858 | 71,195 | 1,901 | 944 | 3,221 | 43,930 | 21,802 | 74,415 |
| Total | 88,786 | 48,166 | 142,663 | 3,110 | 1,641 | 5,112 | 91,895 | 49,807 | 147,776 |

FY 2016

| Ages | Men | | | Women | | | Total | | |
|--------------|--------|--------|---------|--------|-------|-------|--------|--------|---------|
| | Middle | Low | High | Middle | Low | High | Middle | Low | High |
| 65-69 | 4,611 | 1,678 | 13,410 | 167 | 61 | 484 | 4,777 | 1,739 | 13,894 |
| 70-74 | 7,063 | 4,025 | 11,765 | 196 | 112 | 327 | 7,259 | 4,137 | 12,092 |
| 75-79 | 11,299 | 6,435 | 15,153 | 312 | 178 | 419 | 11,611 | 6,613 | 15,571 |
| 80-84 | 22,792 | 14,535 | 29,908 | 579 | 369 | 759 | 23,371 | 14,904 | 30,667 |
| 85+ | 42,327 | 21,006 | 71,699 | 1,809 | 898 | 3,065 | 44,136 | 21,904 | 74,764 |
| Total | 88,092 | 47,679 | 141,934 | 3,063 | 1,617 | 5,054 | 91,155 | 49,297 | 146,988 |

FY 2017

| Ages | Men | | | Women | | | Total | | |
|--------------|---------------|---------------|----------------|--------------|--------------|--------------|---------------|---------------|----------------|
| | Middle | Low | High | Middle | Low | High | Middle | Low | High |
| 65-69 | 4,083 | 1,486 | 11,875 | 182 | 66 | 529 | 4,265 | 1,553 | 12,403 |
| 70-74 | 8,167 | 4,654 | 13,603 | 224 | 128 | 373 | 8,391 | 4,781 | 13,976 |
| 75-79 | 11,346 | 6,462 | 15,216 | 326 | 186 | 438 | 11,672 | 6,648 | 15,653 |
| 80-84 | 21,639 | 13,800 | 28,396 | 577 | 368 | 758 | 22,217 | 14,168 | 29,153 |
| 85+ | 42,535 | 21,109 | 72,052 | 1,736 | 862 | 2,941 | 44,271 | 21,971 | 74,992 |
| Total | 87,770 | 47,511 | 141,140 | 3,046 | 1,610 | 5,038 | 90,816 | 49,121 | 146,178 |

FY 2018

| Ages | Men | | | Women | | | Total | | |
|--------------|---------------|---------------|----------------|--------------|--------------|--------------|---------------|---------------|----------------|
| | Middle | Low | High | Middle | Low | High | Middle | Low | High |
| 65-69 | 3,562 | 1,297 | 10,360 | 200 | 73 | 582 | 3,762 | 1,370 | 10,942 |
| 70-74 | 9,043 | 5,153 | 15,062 | 257 | 146 | 428 | 9,300 | 5,299 | 15,490 |
| 75-79 | 11,730 | 6,681 | 15,730 | 342 | 195 | 459 | 12,072 | 6,875 | 16,189 |
| 80-84 | 20,712 | 13,208 | 27,178 | 581 | 370 | 762 | 21,293 | 13,578 | 27,940 |
| 85+ | 42,590 | 21,137 | 72,145 | 1,671 | 829 | 2,830 | 44,260 | 21,966 | 74,975 |
| Total | 87,637 | 47,475 | 140,476 | 3,050 | 1,613 | 5,061 | 90,687 | 49,089 | 145,536 |

FY 2019

| Ages | Men | | | Women | | | Total | | |
|--------------|---------------|---------------|----------------|--------------|--------------|--------------|---------------|---------------|----------------|
| | Middle | Low | High | Middle | Low | High | Middle | Low | High |
| 65-69 | 3,139 | 1,143 | 9,128 | 227 | 83 | 660 | 3,365 | 1,225 | 9,788 |
| 70-74 | 9,573 | 5,455 | 15,944 | 286 | 163 | 477 | 9,859 | 5,618 | 16,421 |
| 75-79 | 12,196 | 6,946 | 16,355 | 366 | 208 | 490 | 12,561 | 7,154 | 16,846 |
| 80-84 | 19,964 | 12,731 | 26,197 | 579 | 369 | 760 | 20,543 | 13,100 | 26,956 |
| 85+ | 42,006 | 20,847 | 71,157 | 1,602 | 795 | 2,714 | 43,608 | 21,642 | 73,870 |
| Total | 86,877 | 47,122 | 138,781 | 3,060 | 1,618 | 5,100 | 89,937 | 48,740 | 143,882 |

FY 2020

| Ages | Men | | | Women | | | Middle | Total | |
|--------------|--------|--------|---------|--------|-------|-------|--------|--------|---------|
| | Middle | Low | High | Middle | Low | High | | Low | High |
| 65-69 | 2,831 | 1,031 | 8,234 | 258 | 94 | 752 | 3,090 | 1,125 | 8,986 |
| 70-74 | 9,787 | 5,577 | 16,302 | 323 | 184 | 538 | 10,110 | 5,761 | 16,840 |
| 75-79 | 12,826 | 7,305 | 17,200 | 386 | 220 | 517 | 13,211 | 7,524 | 17,717 |
| 80-84 | 19,341 | 12,334 | 25,380 | 589 | 376 | 773 | 19,931 | 12,710 | 26,153 |
| 85+ | 41,181 | 20,438 | 69,759 | 1,548 | 768 | 2,623 | 42,730 | 21,206 | 72,382 |
| Total | 85,967 | 46,684 | 136,875 | 3,105 | 1,642 | 5,203 | 89,071 | 48,326 | 142,078 |

FY 2021

| Ages | Men | | | Women | | | Middle | Total | |
|--------------|--------|--------|---------|--------|-------|-------|--------|--------|---------|
| | Middle | Low | High | Middle | Low | High | | Low | High |
| 65-69 | 2,713 | 987 | 7,889 | 293 | 107 | 852 | 3,006 | 1,094 | 8,741 |
| 70-74 | 9,588 | 5,464 | 15,971 | 367 | 209 | 612 | 9,956 | 5,673 | 16,582 |
| 75-79 | 13,505 | 7,691 | 18,111 | 405 | 231 | 543 | 13,910 | 7,922 | 18,654 |
| 80-84 | 18,974 | 12,100 | 24,898 | 605 | 386 | 794 | 19,579 | 12,486 | 25,692 |
| 85+ | 39,804 | 19,754 | 67,427 | 1,495 | 742 | 2,532 | 41,299 | 20,496 | 69,958 |
| Total | 84,584 | 45,997 | 134,295 | 3,165 | 1,674 | 5,332 | 87,749 | 47,671 | 139,627 |

FY 2022

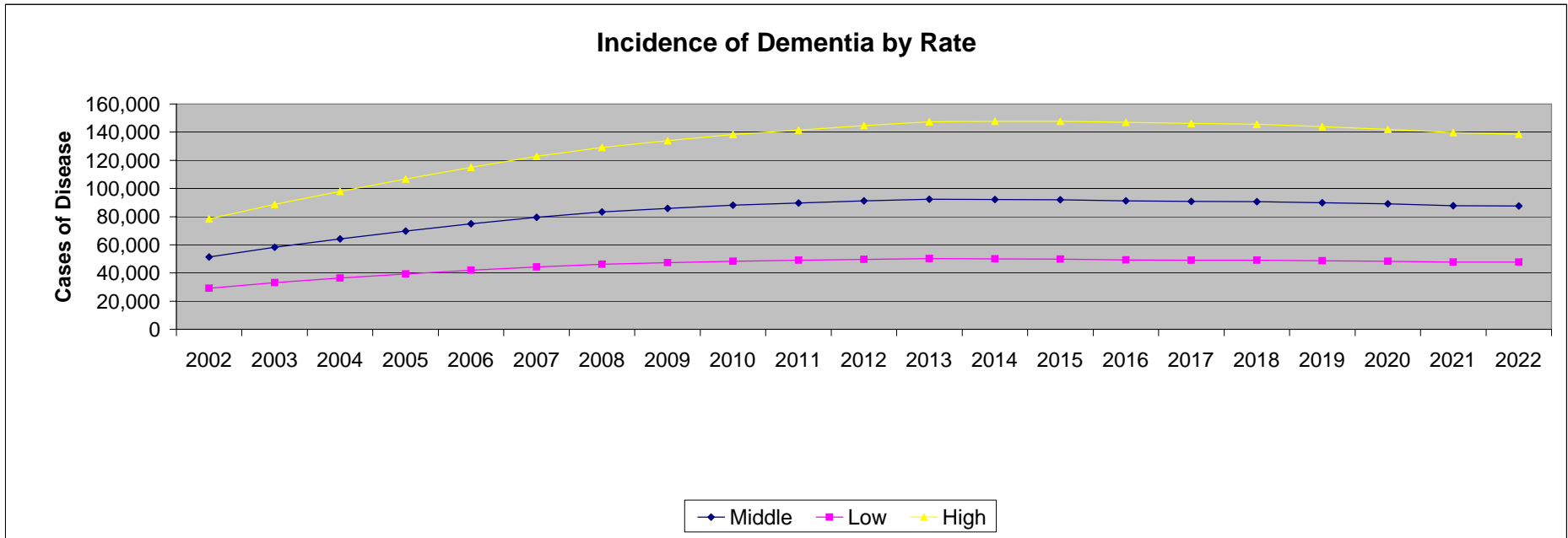
| Ages | Men | | | Women | | | Middle | Total | |
|--------------|--------|--------|---------|--------|-------|-------|--------|--------|---------|
| | Middle | Low | High | Middle | Low | High | | Low | High |
| 65-69 | 2,694 | 981 | 7,835 | 327 | 119 | 950 | 3,021 | 1,100 | 8,785 |
| 70-74 | 8,423 | 4,800 | 14,030 | 397 | 226 | 662 | 8,821 | 5,026 | 14,692 |
| 75-79 | 15,596 | 8,883 | 20,915 | 460 | 262 | 616 | 16,056 | 9,144 | 21,532 |
| 80-84 | 19,066 | 12,159 | 25,019 | 630 | 402 | 827 | 19,696 | 12,560 | 25,846 |
| 85+ | 38,527 | 19,120 | 65,262 | 1,460 | 725 | 2,473 | 39,987 | 19,845 | 67,736 |
| Total | 84,306 | 45,942 | 133,061 | 3,274 | 1,734 | 5,529 | 87,580 | 47,676 | 138,590 |

Estimated Incident Cases of Dementia in VA Enrollee Population

Total Cases (Males + Females)

All Levels of Severity

| | 2002 | 2003 | 2004 | 2005 | 2006 | 2007 | 2008 | 2009 | 2010 | 2011 | 2012 | 2013 | 2014 | 2015 | 2016 | 2017 | 2018 | 2019 | 2020 | 2021 | 2022 |
|---------------|--------|--------|--------|---------|---------|---------|---------|---------|---------|---------|---------|---------|---------|---------|---------|---------|---------|---------|---------|---------|---------|
| Middle | 51,358 | 58,269 | 64,199 | 69,800 | 74,904 | 79,529 | 83,307 | 85,893 | 88,105 | 89,668 | 91,142 | 92,284 | 92,184 | 91,895 | 91,155 | 90,816 | 90,687 | 89,937 | 89,071 | 87,749 | 87,580 |
| Low | 29,155 | 33,059 | 36,330 | 39,351 | 42,018 | 44,341 | 46,200 | 47,353 | 48,324 | 49,014 | 49,641 | 50,134 | 50,041 | 49,807 | 49,297 | 49,121 | 49,089 | 48,740 | 48,326 | 47,671 | 47,676 |
| High | 78,362 | 88,791 | 97,979 | 106,812 | 115,044 | 122,763 | 129,216 | 134,006 | 138,259 | 141,407 | 144,756 | 147,413 | 147,753 | 147,776 | 146,988 | 146,178 | 145,536 | 143,882 | 142,078 | 139,627 | 138,590 |



Estimated Incident Cases of Dementia in VA Enrollee Population Middle (Point Estimate) Projection All Levels of Severity

| | 2002 | 2003 | 2004 | 2005 | 2006 | 2007 | 2008 | 2009 | 2010 | 2011 | 2012 | 2013 | 2014 | 2015 | 2016 | 2017 | 2018 | 2019 | 2020 | 2021 | 2022 |
|--------------|--------|--------|--------|--------|--------|--------|--------|--------|--------|--------|--------|--------|--------|--------|--------|--------|--------|--------|--------|--------|--------|
| 65-69 | 2,709 | 2,688 | 2,628 | 2,583 | 2,563 | 2,593 | 2,701 | 2,850 | 3,049 | 3,284 | 3,832 | 4,300 | 4,626 | 4,800 | 4,777 | 4,265 | 3,762 | 3,365 | 3,090 | 3,006 | 3,021 |
| 70-74 | 5,899 | 6,384 | 6,719 | 6,835 | 6,731 | 6,538 | 6,318 | 6,142 | 5,999 | 5,929 | 5,977 | 6,192 | 6,470 | 6,841 | 7,259 | 8,391 | 9,300 | 9,859 | 10,110 | 9,956 | 8,821 |
| 75-79 | 13,297 | 13,699 | 13,560 | 13,458 | 13,578 | 13,801 | 14,086 | 14,351 | 14,234 | 13,712 | 13,119 | 12,584 | 12,156 | 11,803 | 11,611 | 11,672 | 12,072 | 12,561 | 13,211 | 13,910 | 16,056 |
| 80-84 | 18,508 | 21,381 | 23,540 | 25,197 | 26,115 | 26,324 | 26,282 | 25,449 | 24,877 | 24,799 | 24,852 | 24,930 | 25,009 | 24,520 | 23,371 | 22,217 | 21,293 | 20,543 | 19,931 | 19,579 | 19,696 |
| 85+ | 10,946 | 14,116 | 17,751 | 21,727 | 25,917 | 30,274 | 33,921 | 37,102 | 39,946 | 41,943 | 43,362 | 44,278 | 43,924 | 43,930 | 44,136 | 44,271 | 44,260 | 43,608 | 42,730 | 41,299 | 39,987 |

