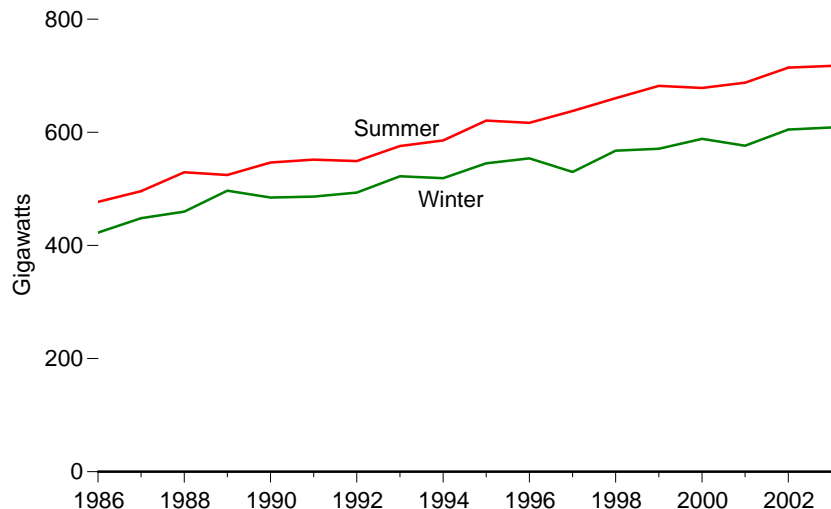
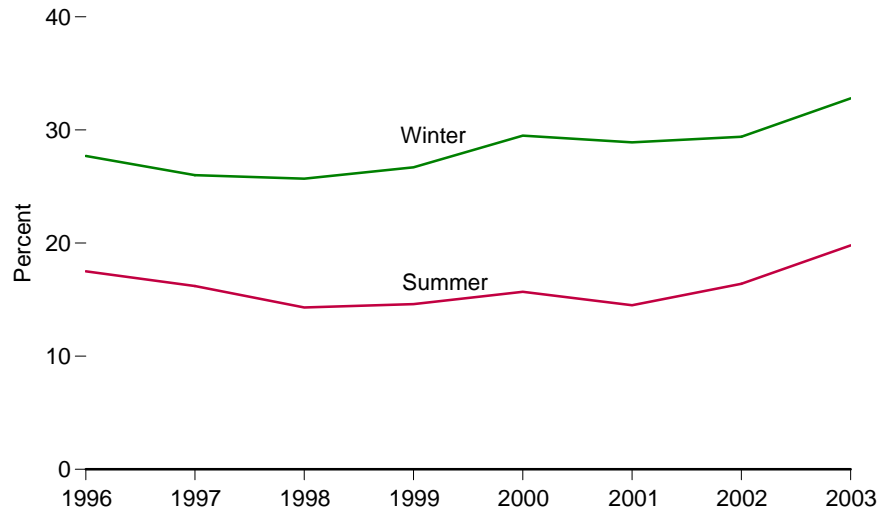


Figure 8.12 Electric Noncoincident Peak Load and Capacity Margin

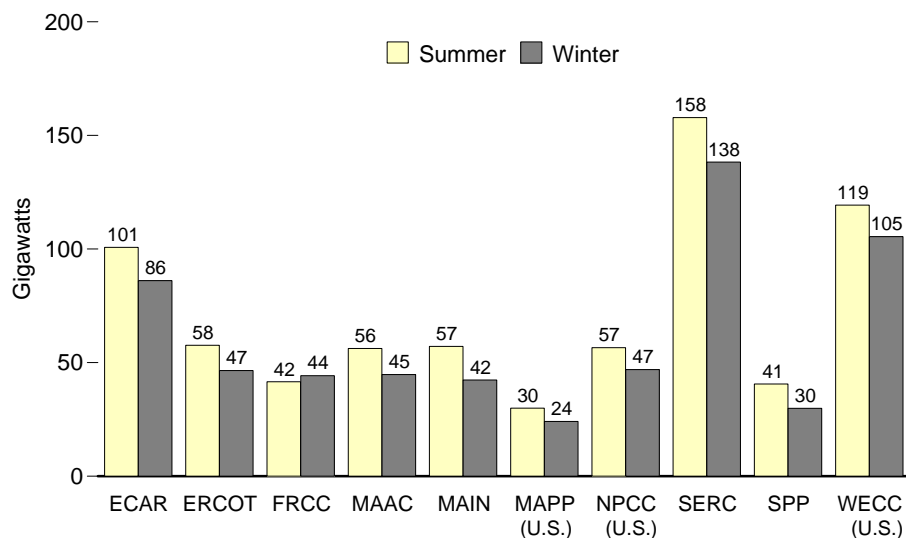
U.S. Peak Load, 1986-2003



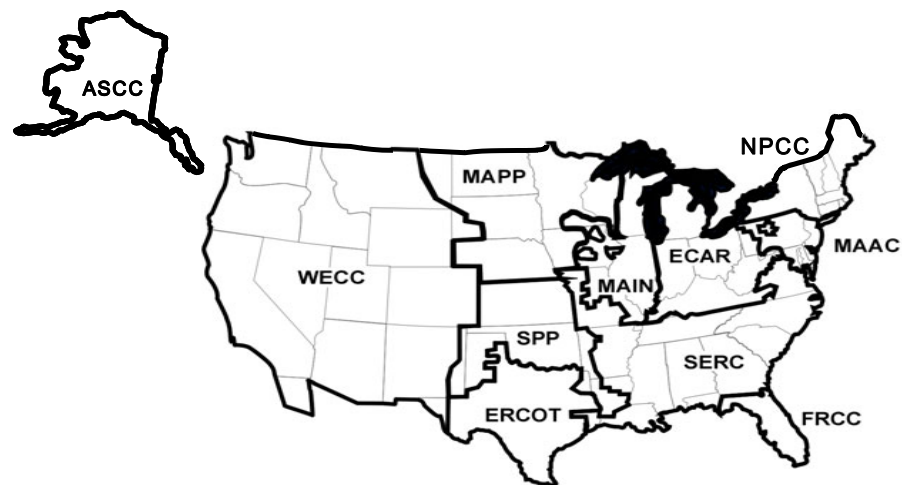
Capacity Margin, 1996-2003



U.S. Peak Load by NERC Region, 2003



North American Electric Reliability Council Map for the United States



Notes: • Noncoincident peak load is the sum of two or more peak loads on individual systems that do not occur at the same time interval. See Glossary for information on North American Electric Reliability Council (NERC).

• Because vertical scales differ, graphs should not be compared.
Source: Table 8.12.