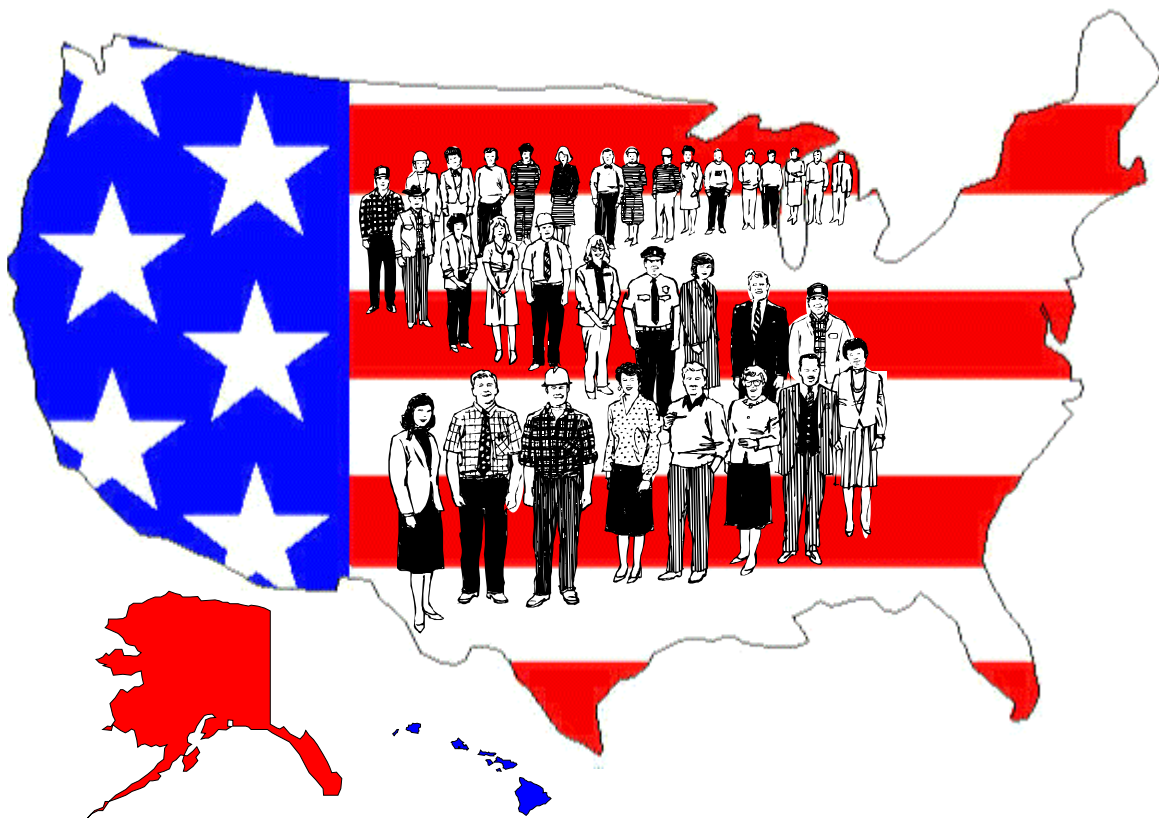


**SSI DISABLED RECIPIENTS
WHO WORK
MARCH 2000**



**SOCIAL SECURITY ADMINISTRATION
OFFICE OF POLICY
OFFICE OF RESEARCH, EVALUATION, AND STATISTICS**

SSI Disabled Recipients Who Work

March 2000

Social Security Administration
Office of Policy
Office of Research, Evaluation and Statistics
Division of SSI Statistics and Analysis

This quarterly report was prepared by Clark Pickett. All questions pertaining to the data and requests for additional copies of this report should be directed to him at Social Security Administration, OP/ORES/DSSA, 4-C-15 Operations Building, Baltimore, MD 21235-6401; e-mail Clark.Pickett@ssa.gov; fax 410-597-0151; or phone 410-965-9016. This report is also available on the Internet at <http://www.ssa.gov/policy/programs/SSI/>

Table of Contents

Introduction.....	1
Summary	3

List of Charts

Disabled Recipients Who Work

1. SSI disabled recipients who work, December 1987-99	4
2. SSI disabled recipients who work, by state, March 2000	5
3. SSI disabled recipients who work, by age, March 2000	6
4. SSI disabled recipients who work, by diagnosis, March 2000	7
5. SSI disabled recipients who work, by monthly earnings, March 2000.....	8

Section 1619 Participants

6. Section 1619 participants, by state, March 2000.....	9
7. Section 1619 participants, by age, March 2000	10
8. Section 1619 participants by diagnosis, March 2000	11

Other Work Incentive Program Participants

9. SSI disabled recipients benefitting from specified work incentive provisions, by age, March 2000	12
10. SSI disabled recipients benefitting from specified work incentive provisions, by diagnosis, March 2000.....	13

List of Tables

Disabled Recipients Who Work

1. Number of SSI disabled recipients, and number and percentage distribution of disabled working recipients, for selected months, 1976–2000	14
2. Number of SSI disabled recipients, and number and percentage distribution of SSI disabled working recipients, by state, March 2000	15
3. Number of SSI disabled working recipients in section 1619 status, by state, March 2000.....	16
4. Number and percentage distribution of SSI disabled working recipients and average earnings, by selected characteristics, March 2000.....	17
5. Percentage distribution of SSI disabled recipients and disabled working recipients age 18–64, by diagnosis, March 2000.....	18
6. Number and percentage distribution of SSI disabled recipients age 18–64, with earnings, and in 1619(b) status, by age, March 2000	19
7. Number of SSI disabled recipients age 18–64, and number and percentage distribution of section 1619 participants, by state, March 2000	20
8. Number of SSI disabled recipients in December 1999, by program status and earnings in March 2000	21

Section 1619 Participants

9. Number of section 1619(a) and 1619(b) participants and percentage change from preceding period, for selected months, 1982–2000	22
10. Number and average earnings of section 1619(a) participants, by state, for selected months, 1999–2000	23
11. Number and average earnings of section 1619(b) participants, by state, for selected months, 1999–2000	24

12.	Number and average earnings of section 1619(a) and 1619(b) participants, by selected characteristics, March 2000	25
13.	Percentage distribution of SSI disabled recipients and section 1619(a) and 1619(b) participants age 18–64, by diagnosis, March 2000	26

Other Work Incentive Program Participants

14.	Number of SSI disabled recipients benefiting from specified work incentive provisions, by state, March 2000	27
15.	Number of SSI disabled recipients benefiting from specified work incentive provisions, by selected characteristics, March 2000	28
16.	Percentage distribution of SSI disabled recipients benefiting from specified work incentive provisions, by diagnosis, March 2000	29
17.	Percentage distribution of persons with income excluded under specified work incentive provisions, by amount excluded, March 2000	30

Introduction

This report provides information about Supplemental Security Income (SSI) disabled and blind¹ recipients who work and receive earnings. The report presents data on all SSI disabled recipients who work, section 1619 participants, and recipients who benefit from other work incentive provisions.

Since the beginning of the SSI program, a number of SSI disabled recipients have worked and received SSI payments. Initially, the program contained basic general and earned income exclusions that recognized the additional costs associated with employment. In computing the SSI payment, the first \$20 of income is not counted. In addition, the first \$65 of monthly earnings and one-half of the earnings in excess of \$65 are also excluded.

The law also contained a number of special income exclusions that were intended as work incentives:

- Blind Work Expenses (BWE) permit the exclusion of any earned income of a blind person that is used to meet any expenses reasonably attributable to earning the income.
- Plans for Achieving Self-Support (PASS) permit a recipient with an approved PASS to set aside earned or unearned income and resources for a work goal. The income or resources set aside are used to pay for goods or services needed to reach the goal, such as education, vocational training, starting a business, or purchasing work related equipment. The income and resources that are set aside under a PASS are excluded from SSI income and resources tests, but they do not influence the determination of ability to engage in substantial gainful activity (SGA).
- Student Child Earned Income Exclusions allow for the exclusion of certain earnings

of child recipients under age 22 who are students regularly attending school.

The 1980 amendments to the Social Security Act established section 1619, and provided additional work incentive provisions to assist SSI recipients in entering the workforce. These included income exclusions for impairment-related work expenses, a change in the treatment of sheltered workshop earnings, and the continuation of SSI payments for some individuals whose disability ceased due to medical recovery.

- Impairment Related Work Expenses (IRWE) exclude from earnings the costs of items and services needed to work because of the person's disability and are paid for by the individual. These expenses are excluded from earned income used to compute ongoing SSI monthly payments. Beginning December 1990, the IRWE exclusions are also applied in the determination of income for purposes of initial SSI eligibility. IRWE may also be deducted from earned income when determining SGA.
- A change in the treatment of sheltered workshop earnings provides that remuneration for services performed in sheltered workshops or activities centers is treated as earned income. This change makes it possible to apply the earned income exclusion to earnings that previously were subject to the general income exclusion; i.e., the first \$20 and a dollar-for-dollar offset thereafter.
- The continuation of payments provision allows for the continuation of SSI (also SSDI) payments to disabled individuals after their disability ceases due to medical recovery, if they are participating in approved vocational rehabilitation plans and SSA determines that completion of the program will increase the chances of permanent removal from the disability rolls.

¹ Unless specifically excluded and/or listed separately, all references to SSI disabled recipients and workers in this report include persons whose eligibility is based on blindness.

The provision assists individuals whose medical improvement occurs before completion of vocational training. This provision was extended to SSI recipients whose eligibility is based on blindness effective April 1988.

Congress enacted these provisions because it concluded that additional incentives were required to help SSI disabled recipients to become self-supporting. They believed that individuals who could work outside of sheltered workshops, might have been discouraged from doing so by the fear of losing their benefits before they had established for themselves the capability for continued self-support.

Section 1619(a) provides special SSI cash benefits to disabled individuals who lose eligibility for SSI payments because they have earnings at the level that is ordinarily considered to represent SGA. Section 1619(b) provides special SSI recipient status for Medicaid purposes to working disabled or blind individuals when their earnings make them ineligible for cash payments.

Under P.L. 99-643, which made section 1619 permanent, disabled individuals on the SSI rolls retain disability status until they medically improve. The distinction between a disabled person eligible for regular SSI benefits and a disabled person eligible for 1619(a) benefits is that the latter has several months with gross earnings above the SGA level.

Under previous law, 1619(a) status did not begin until after the completion of a trial work period and a determination was made that subsequent work was SGA. A number of cases were defined as 1619(a) after June 1987 as a result of this change in the definition, rather than from any change in their work activity.

Beginning January 1990, a number of recipients went from 1619(a) status to regular eligibility status as a result of the increase in the SGA level from \$300 to \$500. This also occurred effective July 1999, when the SGA level was further increased to \$700.

Under section 1619(b), cash payments are not made. However, recipient status for Medicaid purposes continues until earnings reach a plateau that takes into account the person's ability to afford medical care as well as his or her normal living expenses.

An individual may benefit from more than one of the work incentive provisions. For example, he or she may receive special cash payments under section 1619 and have income excluded under a PASS. Other combinations are also possible, but it is not possible to have both IRWE and BWE.

The data in this report are based on the SSI caseload at the end of March 2000.

In March 2000, there were 338,718 SSI disabled beneficiaries who were working (6.3 percent of the total SSI disabled caseload) (table 2). Included in this count were 69,545 section 1619(b) participants who do not receive an SSI payment, but who have special SSI recipient status for Medicaid purposes. Almost three-fourths (69.3 percent) of the workers had amounts of earned income below the substantial gainful activity (SGA) level of \$700 per month; 27.0 percent earned \$65 or less (table 4).

Geographic Distribution

Among the States, the percentage of disabled workers varied from a low of 2.9 percent in Alabama to a high of 19.2 percent in Iowa (table 2). In general, the percentage of disabled workers was higher in the Northern States than in the Southern States.

Demographic Characteristics

The majority of these disabled workers were male (53.3 percent). Almost half (47.1 percent) had unearned income; 40.3 percent were receiving Social Security benefits (table 4). Comparable figures for all disabled recipients in March 2000 were: 44.5 percent male, 37.7 percent with unearned income, and 30.5 percent receiving Social Security benefits.

Diagnosis

Disabled workers are more likely to have certain impairments than other disabled recipients. Three-fourths (75.2 percent) of the workers had a mental disorder, including 49.7 percent who were diagnosed with mental retardation (table 5). This compares to 58.4 percent of all disabled recipients with a mental disorder, including 24.5 percent with mental retardation.

Section 1619

The greatest use of work incentive provisions was by participants under section 1619—27.9 percent of disabled workers. This included 7.4 percent under section 1619(a), and 20.5 percent under section 1619(b) (table 3).

Other Work Incentives

Use of other work incentive provisions continued to have a smaller, but measurable, impact. In March 2000, 4.3 percent of the SSI disabled workers had some of their income excluded under one of these provisions—plan for achieving self support (PASS), (0.3 percent); impairment related work expenses (IRWE), (2.8 percent), or blind work expenses (BWE), (1.2 percent) (table 15).

A PASS permits an SSI recipient to set aside income and resources to help obtain the training or education necessary for certain specified occupational goals. In March 2000, 376 PASS participants had earnings, which averaged \$610 per month (table 4). However, exclusions under a PASS are not limited to earnings. Of the 1,179 disabled recipients with a PASS, almost two-thirds (66.2 percent) did not have any earnings reported for March 2000 (table 15). For this group, the PASS excluded unearned income such as social security benefits. Out of all PASS participants, 132 had a PASS that excluded only resources.

**Chart 1.--SSI disabled recipients who work,
December 1987-99**

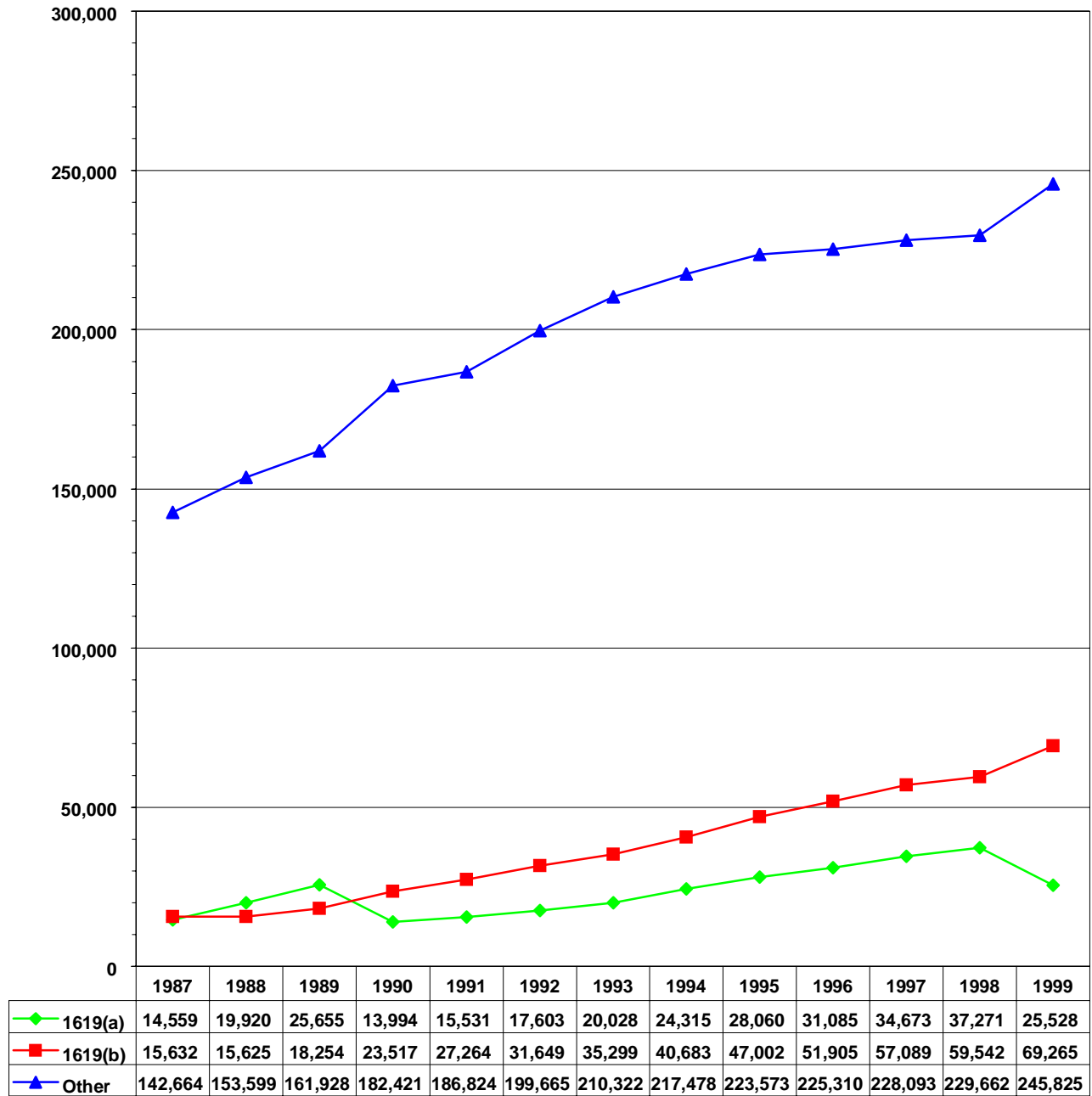
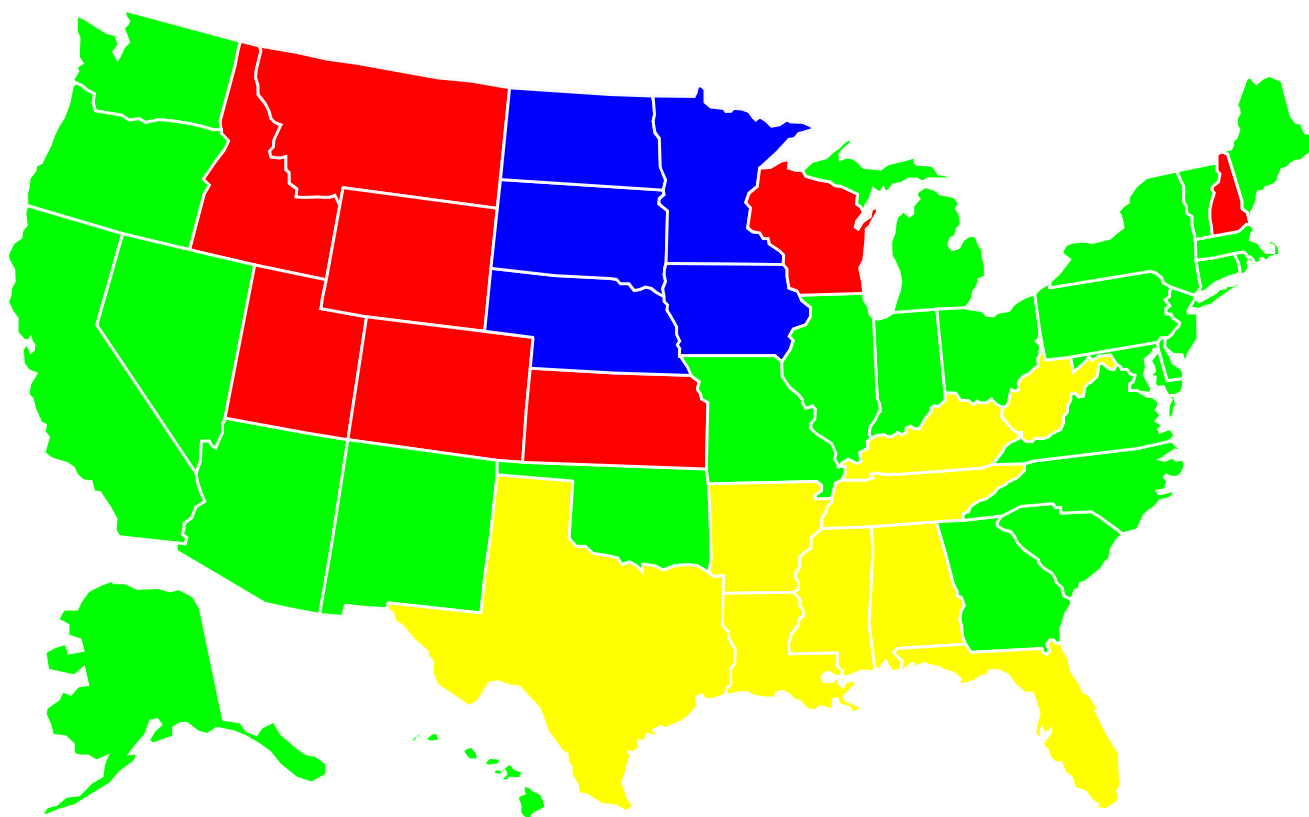
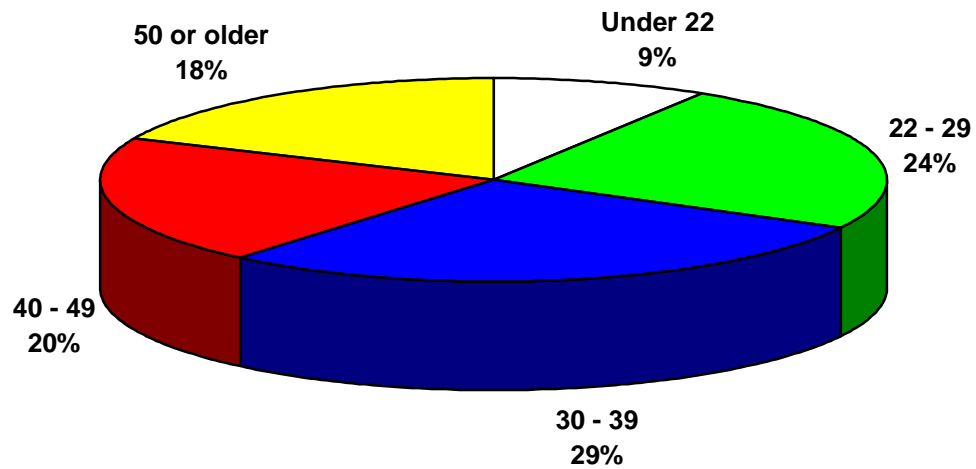


Chart 2.--SSI disabled recipients who work,
by state, March 2000

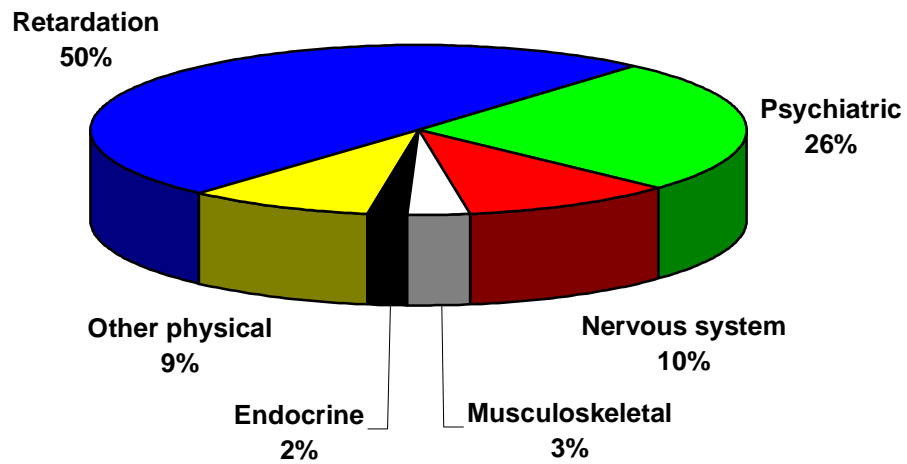


**Chart 3.--SSI disabled recipients who work,
by age, March 2000**



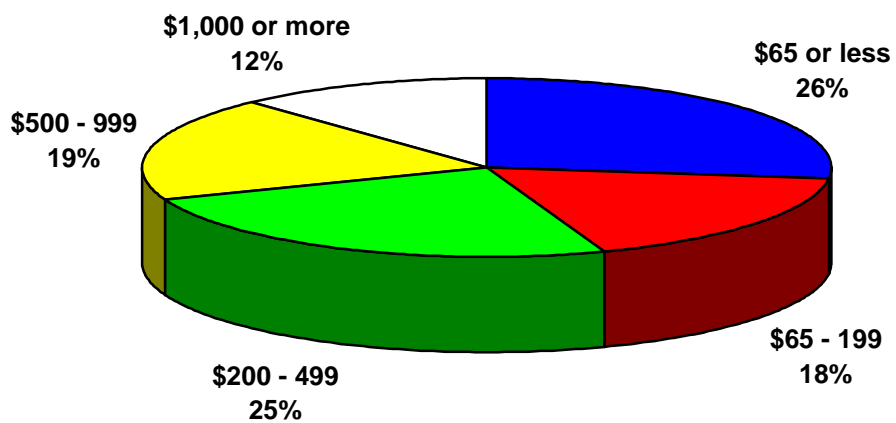
Data includes section 1619(b) participants.

**Chart 4.--SSI disabled recipients who work,
by diagnosis, March 2000**



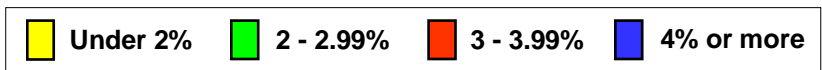
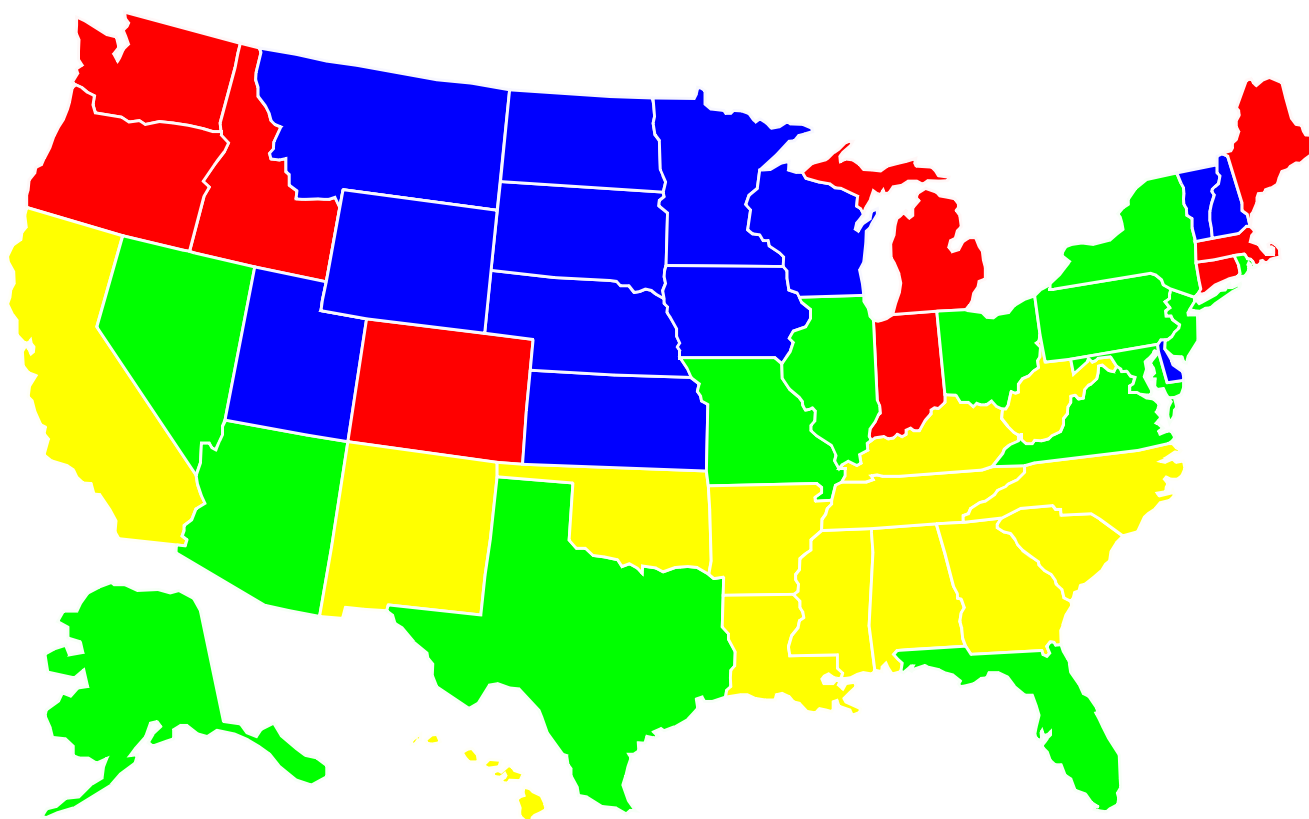
Data includes section 1619(b) participants.

**Chart 5.--SSI disabled recipients who work,
by monthly earnings, March 2000**



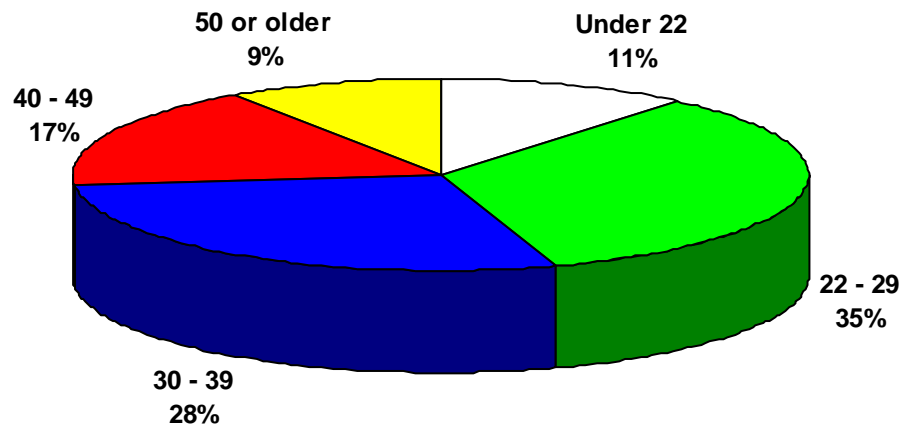
Data includes section 1619(b) participants.

Chart 6.--Section 1619 participants,
by state, March 2000

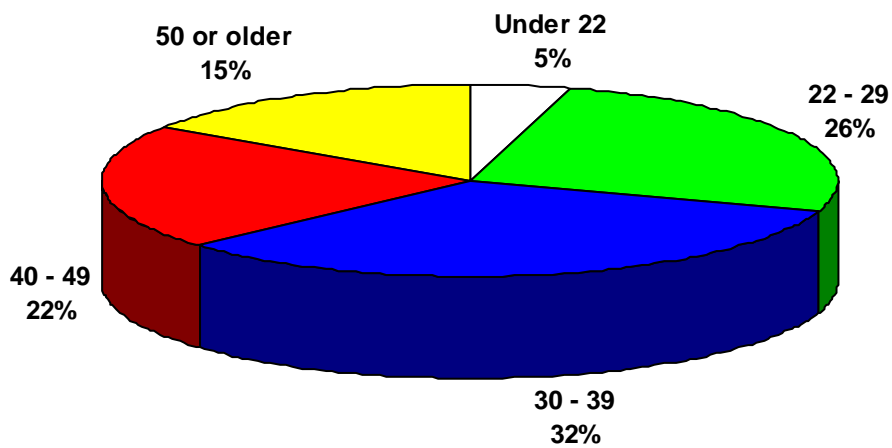


**Chart 7.--Section 1619 participants,
by age, March 2000**

1619(a) Participants

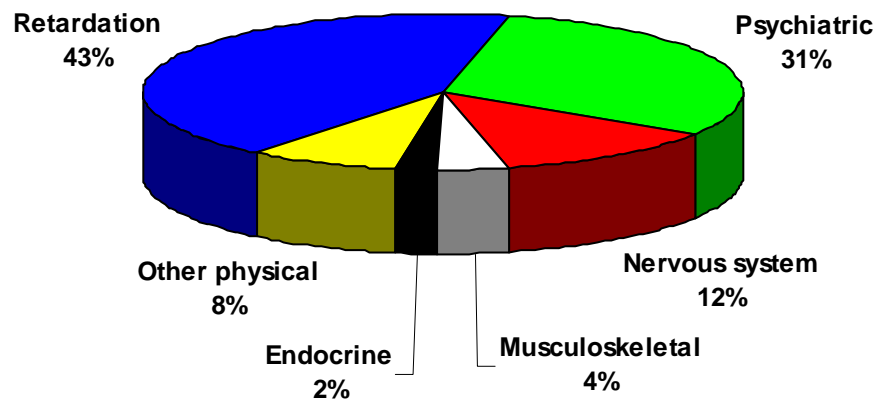


1619(b) Participants



**Chart 8.--Section 1619 participants,
by diagnosis, March 2000**

1619(a) Participants



1619(b) Participants

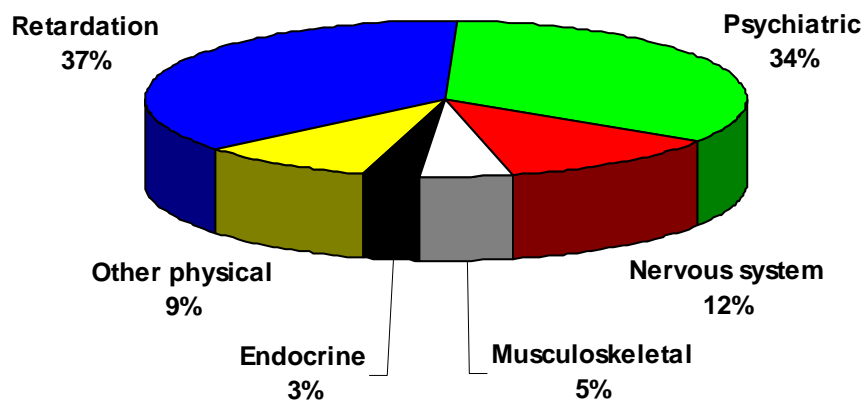
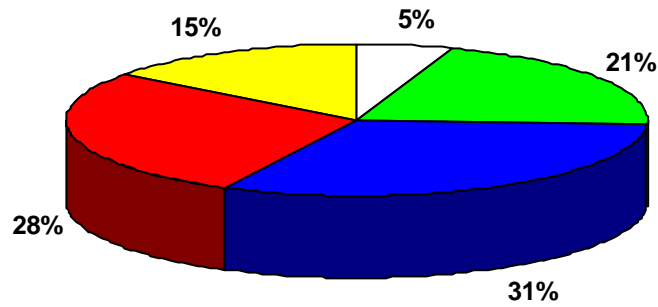
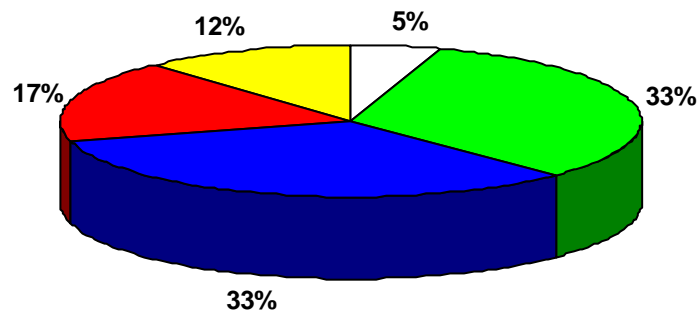


Chart 9--SSI disabled recipients benefiting from specified work incentive provisions, by age, March 2000

Recipients with PASS



Recipients with IRWE



Recipients with BWE

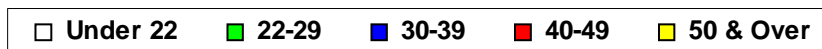
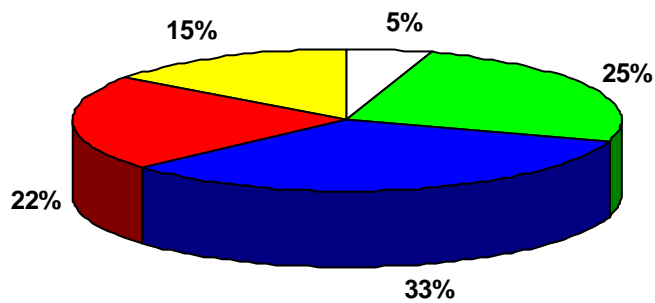
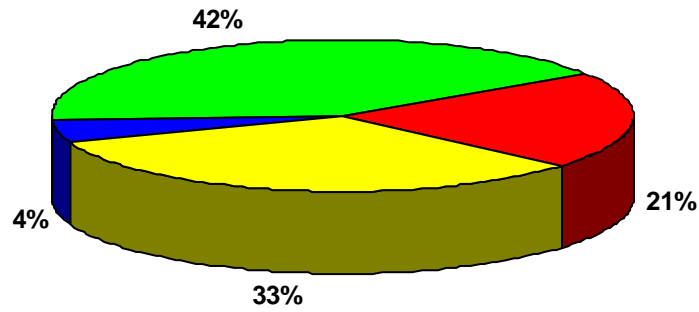
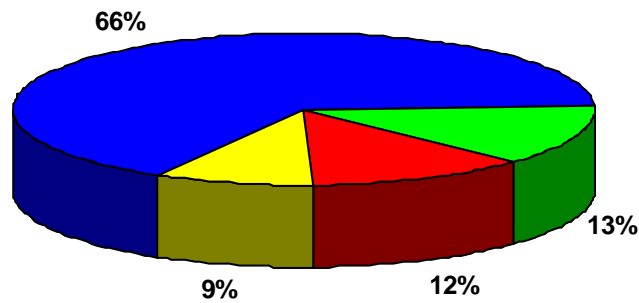


Chart 10--SSI disabled recipients benefiting from specified work incentive provisions, by diagnosis, March 2000

Recipients with PASS



Recipients with IRWE



Recipients with BWE

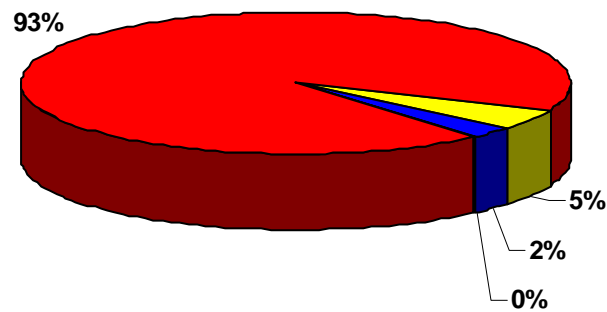


Table 1.—Number of SSI disabled recipients, and number and percentage distribution of disabled working recipients, for selected months, 1976–2000 ¹

At end of selected month	All disabled recipients ²	Disabled working recipients		
		Receiving payments ³	1619(b) participants	Percent of disabled recipients
December: ⁴				
1976	2,088,242	70,719	...	3.4
1977	2,186,771	83,697	...	3.8
1978	2,249,025	87,697	...	3.9
1979	2,277,859	92,270	...	4.1
1980	2,334,241	99,276	...	4.3
1981	2,340,785	102,632	...	4.4
1982	2,314,364	102,288	5,515	4.7
1983	2,391,262	108,734	5,165	4.8
1987	2,945,244	157,223	15,632	5.9
1988	3,046,074	173,519	15,625	6.2
1989	3,172,270	187,583	18,254	6.5
1990	3,386,603	196,415	23,517	6.5
1991	3,681,050	202,355	27,264	6.2
1992	4,126,816	217,268	31,649	6.0
1993	4,544,777	230,350	35,299	5.8
1994	4,870,564	241,793	40,683	5.8
1995	5,115,014	251,633	47,002	5.8
1996	5,252,991	256,395	51,905	5.9
1997	5,189,724	262,766	57,089	6.2
1998	5,293,829	266,933	59,542	6.2
1999	5,317,861	271,353	69,265	6.4
1998				
March	5,235,042	264,830	54,639	6.1
June.....	5,285,950	268,628	55,761	6.1
September.....	5,312,870	272,079	58,183	6.2
December.....	5,293,829	266,933	59,542	6.2
1999				
March	5,350,722	268,866	63,431	6.2
June.....	5,354,409	270,989	66,939	6.3
September.....	5,357,789	272,100	70,580	6.4
December.....	5,317,861	271,353	69,265	6.4
2000				
March	5,367,023	269,173	69,545	6.3

¹ Includes SSI blind recipients.

² Includes section 1619(b) participants.

³ Includes section 1619(a) participants and SSI recipients earning less than the Substantial Gainful Activity level, (\$700 effective July 1999).

⁴ Data not available for December 1984, 1985, and 1986.

Disabled Recipients Who Work

Table 2.—Number of SSI disabled recipients, and number and percentage distribution of SSI disabled working recipients, by state, March 2000 ¹

State	All disabled recipients	Disabled working recipients	
		Number	Percent
Total.....	5,367,023	338,718	6.3
Alabama.....	133,282	3,821	2.9
Alaska.....	7,100	521	7.3
Arizona.....	68,308	3,618	5.3
Arkansas.....	72,932	3,396	4.7
California.....	750,248	41,189	5.5
Colorado.....	46,995	4,722	10.0
Connecticut.....	42,085	3,911	9.3
Delaware.....	10,824	867	8.0
District of Columbia.....	17,781	693	3.9
Florida.....	279,905	11,211	4.0
Georgia.....	163,757	8,270	5.1
Hawaii.....	13,536	671	5.0
Idaho.....	16,671	1,661	10.0
Illinois.....	222,082	13,931	6.3
Indiana.....	83,250	6,340	7.6
Iowa.....	37,642	7,234	19.2
Kansas.....	33,562	4,177	12.4
Kentucky.....	155,104	5,002	3.2
Louisiana.....	143,650	5,195	3.6
Maine.....	26,762	2,147	8.0
Maryland.....	72,805	5,400	7.4
Massachusetts.....	124,776	10,868	8.7
Michigan.....	195,282	16,439	8.4
Minnesota.....	56,429	9,232	16.4
Mississippi.....	108,323	3,364	3.1
Missouri.....	100,230	7,561	7.5
Montana.....	12,797	1,725	13.5
Nebraska.....	19,301	3,123	16.2
Nevada.....	18,110	1,232	6.8
New Hampshire.....	10,937	1,342	12.3
New Jersey.....	113,789	7,701	6.8
New Mexico.....	37,797	1,880	5.0
New York.....	478,387	29,063	6.1
North Carolina.....	157,951	8,184	5.2
North Dakota.....	7,225	1,376	19.0
Ohio.....	229,499	18,046	7.9
Oklahoma.....	62,262	3,615	5.8
Oregon.....	45,178	4,219	9.3
Pennsylvania.....	246,332	15,278	6.2
Rhode Island.....	22,985	1,750	7.6
South Carolina.....	91,252	5,212	5.7
South Dakota.....	11,300	2,157	19.1
Tennessee.....	143,745	6,431	4.5
Texas.....	296,365	14,618	4.9
Utah.....	18,591	2,277	12.2
Vermont.....	11,300	1,123	9.9
Virginia.....	109,156	6,372	5.8
Washington.....	87,864	6,512	7.4
West Virginia.....	65,981	1,954	3.0
Wisconsin.....	79,692	11,323	14.2
Wyoming.....	5,412	749	13.8
Northern Mariana Islands.....	494	15	3.0

¹ Includes 1619(b) participants.

Disabled Recipients Who Work

Table 3.—Number of SSI disabled working recipients in section 1619 status, by state, March 2000

State	Total	Section 1619(a)	Section 1619(b)	Other disabled working recipients
Total.....	338,718	25,055	69,545	244,118
Alabama.....	3,821	386	807	2,628
Alaska.....	521	35	127	359
Arizona.....	3,618	314	879	2,425
Arkansas.....	3,396	250	705	2,441
California.....	41,189	3,913	5,846	31,430
Colorado.....	4,722	299	1,049	3,374
Connecticut.....	3,911	228	995	2,688
Delaware.....	867	79	239	549
District of Columbia.....	693	62	184	447
Florida.....	11,211	1,048	2,808	7,355
Georgia.....	8,270	612	1,601	6,057
Hawaii.....	671	37	107	527
Idaho.....	1,661	93	368	1,200
Illinois.....	13,931	1,099	2,814	10,018
Indiana.....	6,340	506	1,615	4,219
Iowa.....	7,234	330	1,603	5,301
Kansas.....	4,177	266	959	2,952
Kentucky.....	5,002	380	1,074	3,548
Louisiana.....	5,195	553	1,219	3,423
Maine.....	2,147	127	529	1,491
Maryland.....	5,400	378	1,045	3,977
Massachusetts.....	10,868	920	3,009	6,939
Michigan.....	16,439	1,147	3,657	11,635
Minnesota.....	9,232	450	2,175	6,607
Mississippi.....	3,364	348	853	2,163
Missouri.....	7,561	389	1,494	5,678
Montana.....	1,725	73	347	1,305
Nebraska.....	3,123	150	595	2,378
Nevada.....	1,232	99	264	869
New Hampshire.....	1,342	90	398	854
New Jersey.....	7,701	444	1,505	5,752
New Mexico.....	1,880	137	366	1,377
New York.....	29,063	2,071	4,824	22,168
North Carolina.....	8,184	452	1,638	6,094
North Dakota.....	1,376	46	253	1,077
Ohio.....	18,046	1,346	3,417	13,283
Oklahoma.....	3,615	180	583	2,852
Oregon.....	4,219	183	962	3,074
Pennsylvania.....	15,278	1,118	2,936	11,224
Rhode Island.....	1,750	106	368	1,276
South Carolina.....	5,212	320	908	3,984
South Dakota.....	2,157	80	474	1,603
Tennessee.....	6,431	524	1,462	4,445
Texas.....	14,618	1,146	3,331	10,141
Utah.....	2,277	171	397	1,709
Vermont.....	1,123	97	305	721
Virginia.....	6,372	470	1,346	4,556
Washington.....	6,512	640	1,824	4,048
West Virginia.....	1,954	156	406	1,392
Wisconsin.....	11,323	661	2,711	7,951
Wyoming.....	749	43	158	548
Northern Mariana Islands.....	15	3	6	6

Disabled Recipients Who Work

Table 4.—Number and percentage distribution of SSI disabled working recipients and average earnings, by selected characteristics, March 2000 ¹

Selected characteristics	Number	Percent	Average earnings
Total.....	338,718	100.0	\$422
Age:			
Under 18	3,852	1.1	396
18–21	26,313	7.8	417
22–29	81,287	24.0	508
30–39	95,984	28.3	436
40–49	69,263	20.4	401
50–59	38,426	11.3	352
60–64	11,478	3.4	297
65 or older	12,115	3.6	216
Sex:			
Male	180,370	53.3	434
Female	158,348	46.7	408
Earned income: ²			
Wages	322,002	95.1	434
Self-employment	17,955	5.3	240
Earning levels:			
\$65 or less	90,904	26.8	54
\$66–\$99	16,705	4.9	82
\$100–\$199	42,877	12.7	138
\$200–\$299	32,616	9.6	235
\$300–\$399	26,555	7.8	334
\$400–\$499	24,955	7.4	434
\$500–\$599	20,344	6.0	526
\$600–\$699	15,332	4.5	631
\$700–\$799	10,370	3.1	732
\$800–\$899	10,087	3.0	831
\$900–\$999	7,708	2.3	934
\$1,000 or more	40,265	11.9	1,488
Unearned income: ²			
None	179,270	52.9	489
Social Security	136,448	40.3	324
Other pensions	3,147	.9	261
Assistance based on need	112	.0	579
Interest, dividends, etc	25,291	7.5	379
Other	11,730	3.5	501
Work incentives: ²			
Section 1619(a)	25,055	7.4	932
Section 1619(b)	69,545	20.5	989
PASS ³	376	.1	610
IRWE	9,533	2.8	436
BWE	3,969	1.2	854

¹ Includes section 1619(b) participants.

² Persons with more than one type are shown under each type.

³ Number of working recipients with a PASS. See Tables 14–17 for data on all recipients with a PASS.

Table 5.—Percentage distribution of SSI disabled recipients and disabled working recipients age 18–64, by diagnosis, March 2000 ¹

Diagnosis	All disabled recipients	Disabled working recipients
Total number	3,690,970	322,751
Total percent ²	100.0	100.0
Infectious and parasitic diseases	2.2	1.3
Neoplasms	1.3	.7
Endocrine, nutritional, and metabolic	5.6	2.1
Mental disorders:		
Schizophrenia	10.9	9.7
Other psychiatric	23.0	15.8
Mental retardation	24.5	49.7
Diseases of the—		
Nervous system and sense organs ³	8.3	10.5
Circulatory system	5.7	1.5
Respiratory system	2.5	.8
Digestive system9	.3
Genitourinary system	1.2	.8
Musculoskeletal system and connective tissues	9.6	3.1
Congenital anomalies4	1.0
Injury and poisoning	2.9	1.7
Other9	1.0

¹ Information for all disabled recipients is based on universe counts for December 1999. Information for section 1619 participants is available from SSI source files.

² Includes only recipients whose diagnosis information is specifically identified in the source files.

³ Most disabled recipients classified as blind are included in this category. A few blind recipients with a primary impairment other than diseases of the eye are coded in other categories. Also, a few recipients are classified with diseases of the eye, but their impairment does not meet the definition of blindness.

Disabled Recipients Who Work

Table 6.—Number and percentage distribution of SSI disabled recipients age 18–64, with earnings, and in 1619(b) status, by age, March 2000

Age	All disabled recipients ¹		With earnings		In 1619(b) status	
	Number	Percent	Number	Percent	Number	Percent
Total.....	3,798,274	100.0	322,751	8.5	67,476	1.8
18–21	231,166	6.1	26,313	11.4	2,835	1.2
22–29	489,676	12.9	81,287	16.6	17,959	3.7
30–39	781,900	20.6	95,984	12.3	22,678	2.9
40–49	937,247	24.7	69,263	7.4	14,990	1.6
50–59	912,742	24.0	38,426	4.2	6,957	.8
60–64	445,543	11.7	11,478	2.6	2,057	.5

¹ Includes section 1619(b) participants.

Disabled Recipients Who Work

Table 7.—Number of SSI disabled recipients age 18–64, and number and percentage distribution of section 1619 participants, by state, March 2000

State ranking	State	All disabled recipients ¹	Section 1619 participants	
			Number	Percent
	Total	3,798,565	92,231	2.43
1	South Dakota	7,920	538	6.79
2	Iowa	28,747	1,898	6.60
3	Minnesota	42,500	2,588	6.09
4	Wisconsin	56,995	3,308	5.80
5	New Hampshire	8,437	477	5.65
6	North Dakota	5,363	295	5.50
7	Nebraska	14,220	727	5.11
8	Kansas	24,462	1,194	4.88
9	Wyoming	4,124	197	4.78
10	Vermont	8,644	395	4.57
11	Delaware	7,166	308	4.30
12	Montana	9,811	412	4.20
13	Utah	13,703	557	4.06
14	Connecticut	31,727	1,205	3.80
15	Colorado	34,885	1,318	3.78
16	Idaho	12,351	453	3.67
17	Massachusetts	105,542	3,845	3.64
18	Washington	67,239	2,415	3.59
19	Indiana	60,070	2,088	3.48
20	Michigan	142,783	4,700	3.29
21	Oregon	34,492	1,123	3.26
22	Maine	21,053	639	3.04
23	Northern Mariana Islands	297	9	3.03
24	Alaska	5,539	160	2.89
25	Ohio	167,925	4,653	2.77
26	Rhode Island	16,917	465	2.75
27	Maryland	50,611	1,383	2.73
28	Nevada	14,041	352	2.51
29	Missouri	73,323	1,830	2.50
30	New Jersey	78,248	1,908	2.44
31	Arizona	47,707	1,157	2.43
32	Illinois	157,963	3,815	2.42
33	Virginia	74,814	1,779	2.38
34	Pennsylvania	178,547	3,963	2.22
35	Texas	201,756	4,329	2.15
36	Florida	179,226	3,741	2.09
37	New York	333,870	6,742	2.02
38	South Carolina	60,784	1,197	1.97
39	District of Columbia	12,104	236	1.95
40	North Carolina	104,317	2,018	1.93
41	Georgia	111,852	2,147	1.92
42	Arkansas	48,076	918	1.91
43	New Mexico	26,174	494	1.89
44	Tennessee	102,986	1,934	1.88
45	Louisiana	96,382	1,726	1.79
46	California	530,613	9,402	1.77
47	Oklahoma	43,455	745	1.71
48	Mississippi	72,291	1,168	1.62
49	Hawaii	10,519	142	1.35
50	Alabama	90,567	1,167	1.29
51	Kentucky	114,092	1,415	1.24
52	West Virginia	51,044	556	1.09

¹ Includes section 1619(b) participants.

Table 8.—Number of SSI disabled recipients in December 1999, by program status and earnings in March 2000 ¹

Program status in December 1999	Total	Program status in March 2000								
		Receiving payments			Not receiving payments					
		Section 1619(a)	Have earnings	No earnings	Ineligible because of earned income			Other excess income	Other non-pay	
					Section 1619(b)	No longer eligible				
			Does not need/use Medicaid	Can pay for equivalent coverage		Both reasons				
Total.....	5,233,010	23,900	235,410	4,724,980	68,180	1,100	220	570	46,140	132,510
Receiving payments:										
Section 1619(a).....	25,210	16,310	1,980	3,160	1,920	50	10	30	240	1,510
Have earnings.....	244,330	2,610	212,020	17,820	3,670	40	0	30	1,980	6,160
No earnings.....	4,893,430	3,610	18,860	4,697,900	9,950	190	40	80	42,230	120,570
Not receiving payments:										
Section 1619(b).....	70,040	1,370	2,550	6,100	52,640	820	170	430	1,690	4,270

¹ Based on 10-percent sample files.

Section 1619 Participants

Table 9.—Number of section 1619(a) and 1619(b) participants and percentage change from preceding period, for selected months, 1982–2000

At end of selected month	1619(a) participants		1619(b) participants ¹	
	Number	Percentage change	Number	Percentage change
December: ²				
1982	287	...	5,515	...
1983	392	...	5,165	...
1987	14,559	...	15,632	...
1988	19,920	36.8	15,625	.0
1989	25,655	28.8	18,254	16.8
1990	13,994	-45.5	23,517	28.8
1991	15,531	11.0	27,264	15.9
1992	17,603	13.3	31,649	16.1
1993	20,028	13.8	35,299	11.5
1994	24,315	21.4	40,683	15.3
1995	28,060	15.4	47,002	15.5
1996	31,085	10.8	51,905	10.4
1997	34,673	11.5	57,089	10.0
1998	37,271	7.5	59,542	4.3
1999	25,528	-31.5	69,265	16.3
1998				
March	34,637	-1	54,639	-4.3
June.....	35,528	2.6	55,761	2.1
September.....	37,216	4.8	58,183	4.3
December.....	37,271	.1	59,542	2.3
1999				
March	39,457	5.9	63,431	6.5
June.....	23,304	-40.9	66,939	5.5
September.....	23,914	2.6	70,580	5.4
December.....	25,528	6.7	69,265	-1.9
2000				
March	25,055	-1.9	63,431	-8.4

¹ Includes blind participants. For March 2000, of the 63,431 participants, 1,177 were blind.

² Data not available for December 1984, 1985, and 1986.

NOTE: In January 1990, the Substantial Gainful Activity (SGA) level was raised from \$300 to \$500 and section 1619(a) participants with earnings below \$500 became eligible for regular SSI benefits rather than the special cash payments under section 1619(a). This is reflected in the decrease shown for 1990. In July 1999, the SGA level was increased to \$700, resulting in the decrease shown for June 1999.

Section 1619 Participants

Table 10.—Number and average earnings of section 1619(a) participants, by state, for selected months, 1999–2000

State	March 1999		December 1999		March 2000	
	Number	Average earnings	Number	Average earnings	Number	Average earnings
Total.....	39,457	\$782	25,528	\$928	25,055	\$932
Alabama	550	779	399	901	386	905
Alaska.....	69	771	35	940	35	964
Arizona	474	774	334	914	314	917
Arkansas	324	775	242	903	250	901
California	5,753	844	3,924	1,013	3,913	1,020
Colorado.....	464	758	332	905	299	903
Connecticut	427	714	213	903	228	893
Delaware	104	763	71	908	79	893
District of Columbia	94	737	57	892	62	901
Florida	1,747	759	1,046	898	1,048	904
Georgia.....	980	758	590	892	612	893
Hawaii.....	69	760	39	924	37	897
Idaho	176	757	118	919	93	902
Illinois	1,745	768	1,117	910	1,099	913
Indiana.....	862	770	533	919	506	915
Iowa.....	587	765	376	894	330	912
Kansas	455	773	265	903	266	913
Kentucky.....	572	780	406	922	380	934
Louisiana	736	777	563	893	553	904
Maine.....	189	776	139	914	127	926
Maryland.....	578	760	380	892	378	903
Massachusetts	1,493	796	934	945	920	946
Michigan	1,874	776	1,226	922	1,147	924
Minnesota	732	762	422	895	450	907
Mississippi.....	431	798	339	900	348	903
Missouri.....	621	766	421	911	389	909
Montana	119	755	67	901	73	886
Nebraska.....	246	744	160	899	150	903
Nevada.....	135	774	103	901	99	923
New Hampshire	131	762	87	954	90	926
New Jersey.....	768	769	422	915	444	920
New Mexico.....	246	755	135	893	137	877
New York.....	3,273	788	2,061	932	2,071	938
North Carolina	812	763	495	898	452	907
North Dakota	79	729	58	904	46	912
Ohio.....	2,221	766	1,380	915	1,346	909
Oklahoma.....	332	746	180	902	180	912
Oregon	364	767	207	901	183	924
Pennsylvania	1,708	770	1,143	922	1,118	925
Rhode Island	150	797	89	932	106	931
South Carolina.....	513	766	306	900	320	903
South Dakota.....	145	750	95	897	80	887
Tennessee.....	751	782	535	902	524	900
Texas.....	1,815	769	1,146	899	1,146	904
Utah.....	264	745	160	895	171	888
Vermont.....	154	802	102	980	97	1,000
Virginia	717	760	502	909	470	923
Washington	1,020	785	663	927	640	929
West Virginia	216	775	160	923	156	934
Wisconsin.....	1,116	781	704	916	661	915
Wyoming	54	760	45	906	43	907
Northern Mariana Islands	2	1,014	2	914	3	860

Section 1619 Participants

Table 11.—Number and average earnings of section 1619(b) participants, by state, for selected months, 1999–2000

State	March 1999		December 1999		March 2000	
	Number	Average earnings	Number	Average earnings	Number	Average earnings
Total.....	63,431	\$988	69,265	\$980	69,545	\$989
Alabama.....	833	1,118	789	1,089	807	1,060
Alaska ¹	118	989	131	933	127	991
Arizona.....	844	994	832	1,000	879	1,023
Arkansas.....	634	907	658	892	705	917
California.....	5,297	1,211	5,848	1,225	5,846	1,225
Colorado.....	933	987	1,013	989	1,049	1,006
Connecticut ¹	844	883	979	866	995	861
Delaware.....	239	1,029	238	1,001	239	1,055
District of Columbia.....	145	1,110	188	1,176	184	1,155
Florida.....	2,531	980	2,686	1,026	2,808	1,010
Georgia.....	1,535	1,002	1,526	972	1,601	980
Hawaii ¹	79	1,083	97	904	107	934
Idaho ¹	343	798	373	930	368	870
Illinois ¹	2,463	1,012	2,831	1,004	2,814	1,034
Indiana ¹	1,538	900	1,619	890	1,615	878
Iowa.....	1,453	767	1,675	794	1,603	768
Kansas ¹	887	879	953	869	959	887
Kentucky.....	1,006	1,078	1,133	1,036	1,074	1,134
Louisiana.....	1,157	976	1,158	892	1,219	910
Maine.....	441	863	524	853	529	868
Maryland.....	840	998	1,011	992	1,045	1,007
Massachusetts.....	2,828	1,088	3,004	1,059	3,009	1,066
Michigan.....	3,254	984	3,624	994	3,657	994
Minnesota ¹	1,956	869	2,165	867	2,175	876
Mississippi.....	718	1,149	760	1,103	853	1,118
Missouri ¹	1,328	822	1,457	821	1,494	821
Montana.....	309	716	361	754	347	750
Nebraska ¹	531	805	609	819	595	820
Nevada ¹	232	985	245	966	264	991
New Hampshire ¹	327	904	383	859	398	872
New Jersey.....	1,370	1,123	1,479	1,098	1,505	1,116
New Mexico.....	343	853	389	901	366	911
New York.....	4,409	1,117	4,901	1,106	4,824	1,118
North Carolina.....	1,551	961	1,651	934	1,638	965
North Dakota ¹	267	850	276	808	253	815
Ohio ¹	3,150	954	3,541	967	3,417	963
Oklahoma ¹	506	893	583	832	583	785
Oregon ¹	867	832	968	840	962	829
Pennsylvania.....	2,639	934	2,935	900	2,936	901
Rhode Island.....	296	1,049	357	987	368	1,006
South Carolina.....	811	940	900	908	908	929
South Dakota.....	438	822	506	761	474	772
Tennessee.....	1,374	1,067	1,485	1,069	1,462	1,087
Texas.....	3,203	955	3,249	912	3,331	941
Utah ¹	434	879	418	853	397	842
Vermont.....	278	848	322	851	305	883
Virginia ¹	1,244	889	1,311	887	1,346	917
Washington.....	1,620	976	1,777	1,010	1,824	1,017
West Virginia.....	344	1,043	378	1,116	406	1,164
Wisconsin.....	2,479	895	2,787	872	2,711	873
Wyoming.....	160	657	177	824	158	724
Northern Mariana Islands.....	5	794	5	832	6	834

¹ The Social Security Administration identifies persons as potential participants, final Medicaid determinations are made by the state.

Section 1619 Participants

Table 12.—Number and average earnings of section 1619(a) and 1619(b) participants, by selected characteristics, March 2000

Selected characteristics	1619(a) participants		1619(b) participants	
	Number	Average earnings	Number	Average earnings
Total.....	25,055	\$932	69,545	\$989
Age:				
Under 18	204	871	316	(1)
18–21	2,587	909	2,835	1,156
22–29	8,493	924	17,959	1,102
30–39	7,116	941	22,678	953
40–49	4,303	944	14,990	941
50–59	1,899	942	6,957	936
60–64	357	963	2,057	803
65 or older	96	915	1,753	786
Sex:				
Male	14,119	938	37,592	1,018
Female	10,936	924	31,953	955
Earned income: ²				
Wages	24,727	932	68,111	991
Self-employment	467	907	1,930	987
Earning levels:				
Less than \$400.....	10,972	268
\$400–\$499	6,967	437
\$500–\$599	6,856	526
\$600–\$699	5,344	631
\$700–\$899	11,232	796	6,640	780
\$900–\$1,199	12,137	1,002	8,489	1,041
\$1,200 or more	1,683	1,337	24,277	1,721
Unearned income: ²				
None.....	22,234	936	24,296	1,460
Social security	645	850	41,724	682
Other pensions.....	50	901	536	806
Assistance based on need.....	1	920	24	1,487
Interest, dividends, etc	1,597	928	4,823	871
Other	653	881	3,059	1,092
Work incentives: ²				
PASS ³	116	1,168	0	0
IRWE	941	967	1,614	878
BWE	11	1,640	685	1,205

¹ Data not available.

² Persons with more than one type are shown under each type.

³ Includes 5 persons with PASS plans that exclude only resources.

Section 1619 Participants

Table 13.—Percentage distribution of SSI disabled recipients and section 1619(a) and 1619(b) participants age 18–64, by diagnosis, March 2000 ¹

Diagnosis	All disabled recipients	1619(a) participants	1619(b) participants
Total number	3,690,970	24,755	67,476
Total percent ²	100.0	100.0	100.0
Infectious and parasitic diseases	2.2	1.4	2.1
Neoplasms	1.3	1.1	1.3
Endocrine, nutritional, and metabolic	5.6	2.5	3.0
Mental disorders:			
Schizophrenia	10.9	9.6	11.4
Other psychiatric	23.0	21.0	22.3
Mental retardation	24.5	43.0	36.7
Diseases of the—			
Nervous system and sense organs ³	8.3	12.3	12.3
Circulatory system	5.7	1.7	2.1
Respiratory system	2.5	1.1	1.1
Digestive system9	.5	.5
Genitourinary system	1.2	1.3	1.5
Musculoskeletal system and connective tissues	9.6	3.6	4.9
Congenital anomalies4	.8	.8
Injury and poisoning	2.9	2.3	2.9
Other9	1.8	1.3

¹ Information for all disabled recipients is based on universe counts for December 1999. Information for section 1619 participants is available from SSI source files.

² Includes only recipients whose diagnosis information is specifically identified in the source files.

³ Most disabled recipients classified as blind are included in this category. A few blind recipients with a primary impairment other than diseases of the eye are coded in other categories. Also, a few recipients are classified with diseases of the eye, but their impairment does not meet the definition of blindness.

Other Work Incentive Participants

Table 14.—Number of SSI disabled recipients benefiting from specified work incentive provisions, by state, March 2000

State	Plans for achieving self-support (PASS) ¹	Impairment-related work expenses (IRWE)	Blind work expenses (BWE)
Total.....	1,179	9,533	3,970
Alabama	20	204	42
Alaska	2	18	2
Arizona	8	107	39
Arkansas	11	96	56
California	260	783	550
Colorado.....	21	44	45
Connecticut	5	153	38
Delaware.....	0	44	10
District of Columbia	4	5	7
Florida	36	469	133
Georgia.....	21	462	80
Hawaii.....	4	18	13
Idaho	1	14	7
Illinois	7	353	101
Indiana.....	5	177	68
Iowa.....	19	75	104
Kansas	13	306	37
Kentucky.....	36	137	60
Louisiana.....	4	128	67
Maine.....	26	51	26
Maryland.....	28	301	42
Massachusetts	55	266	299
Michigan	45	346	132
Minnesota.....	49	167	87
Mississippi.....	7	67	77
Missouri	15	229	67
Montana	18	13	12
Nebraska.....	11	64	17
Nevada	5	29	22
New Hampshire.....	8	28	9
New Jersey.....	33	234	70
New Mexico.....	6	134	15
New York	94	750	319
North Carolina	18	402	134
North Dakota	1	7	2
Ohio.....	57	190	161
Oklahoma	0	99	17
Oregon	4	44	59
Pennsylvania.....	24	525	198
Rhode Island	4	14	16
South Carolina.....	8	106	64
South Dakota.....	7	30	3
Tennessee.....	18	229	77
Texas.....	31	378	245
Utah.....	4	79	18
Vermont.....	13	10	8
Virginia	26	585	98
Washington	9	129	72
West Virginia	6	32	24
Wisconsin.....	69	394	117
Wyoming	3	8	4
Northern Mariana Islands.....	0	0	0

¹ Includes 132 persons with a PASS that excludes only resources.

Other Work Incentive Participants

Table 15.—Number of SSI disabled recipients benefiting from specified work incentive provisions, by selected characteristics, March 2000

Selected characteristics	Plans for achieving self-support (PASS) ¹	Impairment-related work expenses (IRWE)	Blind work expenses (BWE)
Total.....	1,179	9,533	3,970
Age:			
Under 18	5	11	5
18–21	58	465	198
22–29	246	3,103	980
30–39	370	3,169	1,336
40–49	325	1,667	860
50–59	155	773	407
60–64	16	204	100
65 or older	4	141	84
Sex:			
Male	520	5,103	2,206
Female	659	4,430	1,764
Earned income: ²			
Wages	354	9,470	3,832
Self-employment	50	94	162
Earning levels:			
\$65 or less	780	0	1
\$66–\$99	21	967	254
\$100–\$199	11	523	114
\$200–\$299	44	1,572	382
\$300–\$399	23	1,356	282
\$400–\$499	51	1,101	292
\$500–\$599	50	958	253
\$600–\$699	40	776	256
\$700–\$799	30	576	194
\$800–\$899	31	344	180
\$900–\$999	27	542	375
\$1,000 or more	71	818	1,387
Unearned income: ²			
None	224	4,594	2,114
Social Security	895	4,267	1,539
Other pensions	13	82	19
Assistance based on need	0	0	0
Interest, dividends, etc	92	865	365
Other	59	274	165

¹ Includes 132 persons with a PASS that excludes only resources.

² Persons with more than one type are shown under each type.

Other Work Incentive Participants

Table 16.—Percentage distribution of SSI disabled recipients benefiting from specified work incentive provisions, by diagnosis, March 2000

Diagnosis	Plans for achieving self-support (PASS) ¹	Impairment-related work expenses (IRWE)	Blind work expenses (BWE)
Total number	1,179	9,533	3,970
Total percent ²	100.0	100.0	100.0
Infectious and parasitic diseases	1.8	.7	.4
Neoplasms	1.1	.4	.3
Endocrine, nutritional, and metabolic	3.3	.5	.9
Mental disorders:			
Schizophrenia	11.2	4.4	.0
Other psychiatric	30.4	8.5	.3
Mental retardation	4.4	65.9	2.4
Diseases of the—			
Nervous system and sense organs ³	21.0	12.4	92.2
Circulatory system	2.1	.9	.9
Respiratory system8	.2	.0
Digestive system7	.1	.0
Genitourinary system	1.6	.3	.1
Musculoskeletal system and connective tissues	7.4	.9	.1
Congenital anomalies5	1.7	1.8
Injury and poisoning	13.1	2.3	.3
Other6	.5	.2

¹ Includes 132 persons with a PASS that excludes only resources.

² Includes only recipients whose diagnosis information is specifically identified on the source files.

³ Most disabled recipients classified as blind are included in this category. A few blind recipients with a primary impairment other than diseases of the eye are coded in other categories. Also, a few recipients are classified with diseases of the eye, but their impairment does not meet the definition of blindness.

Other Work Incentive Participants

Table 17.—Percentage distribution of persons with income excluded under specified work incentive provisions, by amount excluded, March 2000

Amount excluded	Plans for achieving self-support (PASS) ¹	Impairment-related work expenses (IRWE)	Blind work expenses (BWE)
Total number	1,047	9,533	3,970
Total percent.....	100.0	100.0	100.0
Under \$25.....	.6	21.7	15.5
\$25–\$49	1.1	28.0	9.7
\$50–\$99	3.2	29.3	16.3
\$100–\$199	10.7	14.2	18.2
\$200–\$299	13.6	3.7	12.6
\$300–\$499	33.6	2.1	14.7
\$500–\$999	33.9	.8	10.6
\$1,000 or more	3.2	.2	2.5

¹ Data does not include PASS that exclude only resources.