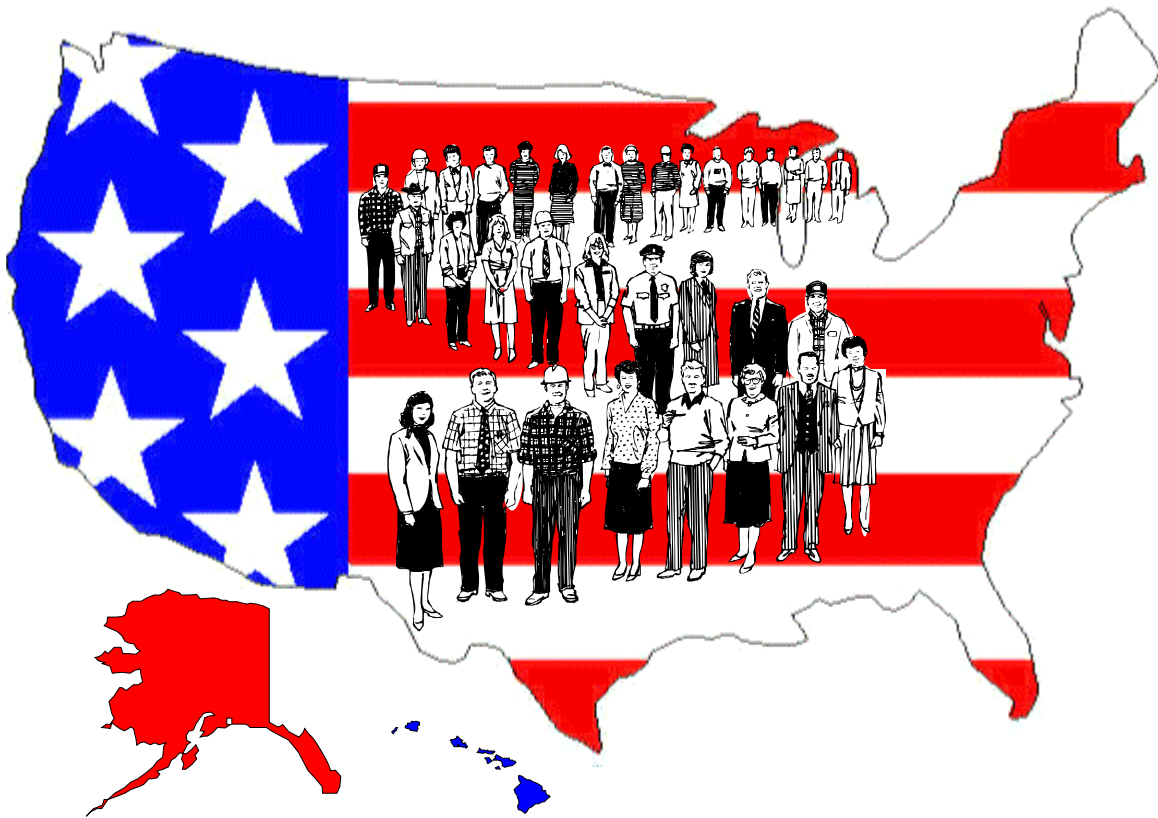


**SSI DISABLED RECIPIENTS  
WHO WORK  
JUNE 2000**



**SOCIAL SECURITY ADMINISTRATION  
OFFICE OF POLICY  
OFFICE OF RESEARCH, EVALUATION, AND STATISTICS**

# **SSI Disabled Recipients Who Work**

## **June 2000**

Social Security Administration  
Office of Policy  
Office of Research, Evaluation and Statistics  
Division of SSI Statistics and Analysis

This quarterly report was prepared by Clark Pickett. All questions pertaining to the data and requests for additional copies of this report should be directed to him at Social Security Administration, OP/ORES/DSSA, 4-C-15 Operations Building, Baltimore, MD 21235-6401; e-mail [Clark.Pickett@ssa.gov](mailto:Clark.Pickett@ssa.gov); fax 410-597-0151; or phone 410-965-9016. This report is also available on the Internet at <http://www.ssa.gov/policy/programs/SSI/>

# Table of Contents

---

Introduction.....	1
Summary .....	3

## List of Charts

### Disabled Recipients Who Work

1. SSI disabled recipients who work, December 1987–99 .....	4
2. SSI disabled recipients who work, by state, June 2000 .....	5
3. SSI disabled recipients who work, by age, June 2000 .....	6
4. SSI disabled recipients who work, by diagnosis, June 2000 .....	7
5. SSI disabled recipients who work, by monthly earnings, June 2000 .....	8

### Section 1619 Participants

6. Section 1619 participants, by state, June 2000 .....	9
7. Section 1619 participants, by age, June 2000 .....	10
8. Section 1619 participants by diagnosis, June 2000 .....	11

### Other Work Incentive Program Participants

9. SSI disabled recipients benefitting from specified work incentive provisions, by age, June 2000 .....	12
10. SSI disabled recipients benefitting from specified work incentive provisions, by diagnosis, June 2000 .....	13

## List of Tables

### Disabled Recipients Who Work

1. Number of SSI disabled recipients, and number and percentage distribution of disabled working recipients, for selected months, 1976–2000 .....	14
2. Number of SSI disabled recipients, and number and percentage distribution of SSI disabled working recipients, by state, June 2000 .....	15
3. Number of SSI disabled working recipients in section 1619 status, by state, June 2000 .....	16
4. Number and percentage distribution of SSI disabled working recipients and average earnings, by selected characteristics, June 2000 .....	17
5. Percentage distribution of SSI disabled recipients and disabled working recipients age 18–64, by diagnosis, June 2000 .....	18
6. Number and percentage distribution of SSI disabled recipients age 18–64, with earnings, and in 1619(b) status, by age, June 2000 .....	19
7. Number of SSI disabled recipients age 18–64, and number and percentage distribution of section 1619 participants, by state, June 2000 .....	20
8. Number of SSI disabled recipients in March 2000, by program status and earnings in June 2000 .....	21

### Section 1619 Participants

9. Number of section 1619(a) and 1619(b) participants and percentage change from preceding period, for selected months, 1982–2000 .....	22
10. Number and average earnings of section 1619(a) participants, by state, for selected months, 1999–2000 .....	23
11. Number and average earnings of section 1619(b) participants, by state, for selected months, 1999–2000 .....	24

12.	Number and average earnings of section 1619(a) and 1619(b) participants, by selected characteristics, June 2000 .....	25
13.	Percentage distribution of SSI disabled recipients and section 1619(a) and 1619(b) participants age 18–64, by diagnosis, June 2000 .....	26

**Other Work Incentive Program Participants**

14.	Number of SSI disabled recipients benefiting from specified work incentive provisions, by state, June 2000 .....	27
15.	Number of SSI disabled recipients benefiting from specified work incentive provisions, by selected characteristics, June 2000 .....	28
16.	Percentage distribution of SSI disabled recipients benefiting from specified work incentive provisions, by diagnosis, June 2000 .....	29
17.	Percentage distribution of persons with income excluded under specified work incentive provisions, by amount excluded, June 2000 .....	30

# Introduction

---

This report provides information about Supplemental Security Income (SSI) disabled and blind<sup>1</sup> recipients who work and receive earnings. The report presents data on all SSI disabled recipients who work, section 1619 participants, and recipients who benefit from other work incentive provisions.

Since the beginning of the SSI program, a number of SSI disabled recipients have worked and received SSI payments. Initially, the program contained basic general and earned income exclusions that recognized the additional costs associated with employment. In computing the SSI payment, the first \$20 of income is not counted. In addition, the first \$65 of monthly earnings and one-half of the earnings in excess of \$65 are also excluded.

The law also contained a number of special income exclusions that were intended as work incentives:

- Blind Work Expenses (BWE) permit the exclusion of any earned income of a blind person that is used to meet any expenses reasonably attributable to earning the income.
- Plans for Achieving Self-Support (PASS) permit a recipient with an approved PASS to set aside earned or unearned income and resources for a work goal. The income or resources set aside are used to pay for goods or services needed to reach the goal, such as education, vocational training, starting a business, or purchasing work related equipment. The income and resources that are set aside under a PASS are excluded from SSI income and resources tests, but they do not influence the determination of ability to engage in substantial gainful activity (SGA).
- Student Child Earned Income Exclusions allow for the exclusion of certain earnings

of child recipients under age 22 who are students regularly attending school.

The 1980 amendments to the Social Security Act established section 1619, and provided additional work incentive provisions to assist SSI recipients in entering the workforce. These included income exclusions for impairment-related work expenses, a change in the treatment of sheltered workshop earnings, and the continuation of SSI payments for some individuals whose disability ceased due to medical recovery.

- Impairment Related Work Expenses (IRWE) exclude from earnings the costs of items and services needed to work because of the person's disability and are paid for by the individual. These expenses are excluded from earned income used to compute ongoing SSI monthly payments. Beginning December 1990, the IRWE exclusions are also applied in the determination of income for purposes of initial SSI eligibility. IRWE may also be deducted from earned income when determining SGA.
- A change in the treatment of sheltered workshop earnings provides that remuneration for services performed in sheltered workshops or activities centers is treated as earned income. This change makes it possible to apply the earned income exclusion to earnings that previously were subject to the general income exclusion; i.e., the first \$20 and a dollar-for-dollar offset thereafter.
- The continuation of payments provision allows for the continuation of SSI (also SSDI) payments to disabled individuals after their disability ceases due to medical recovery, if they are participating in approved vocational rehabilitation plans and SSA determines that completion of the program will increase the chances of permanent removal from the disability rolls.

---

<sup>1</sup> Unless specifically excluded and/or listed separately, all references to SSI disabled recipients and workers in this report include persons whose eligibility is based on blindness.

The provision assists individuals whose medical improvement occurs before completion of vocational training. This provision was extended to SSI recipients whose eligibility is based on blindness effective April 1988.

Congress enacted these provisions because it concluded that additional incentives were required to help SSI disabled recipients to become self-supporting. They believed that individuals who could work outside of sheltered workshops, might have been discouraged from doing so by the fear of losing their benefits before they had established for themselves the capability for continued self-support.

Section 1619(a) provides special SSI cash benefits to disabled individuals who lose eligibility for SSI payments because they have earnings at the level that is ordinarily considered to represent SGA. Section 1619(b) provides special SSI recipient status for Medicaid purposes to working disabled or blind individuals when their earnings make them ineligible for cash payments.

Under P.L. 99-643, which made section 1619 permanent, disabled individuals on the SSI rolls retain disability status until they medically improve. The distinction between a disabled person eligible for regular SSI benefits and a disabled person eligible for 1619(a) benefits is that the latter has several months with gross earnings above the SGA level.

Under previous law, 1619(a) status did not begin until after the completion of a trial work period and a determination was made that subsequent work was SGA. A number of cases were defined as 1619(a) after June 1987 as a result of this change in the definition, rather than from any change in their work activity.

Beginning January 1990, a number of recipients went from 1619(a) status to regular eligibility status as a result of the increase in the SGA level from \$300 to \$500. This also occurred effective July 1999, when the SGA level was further increased to \$700.

Under section 1619(b), cash payments are not made. However, recipient status for Medicaid purposes continues until earnings reach a plateau that takes into account the person's ability to afford medical care as well as his or her normal living expenses.

An individual may benefit from more than one of the work incentive provisions. For example, he or she may receive special cash payments under section 1619 and have income excluded under a PASS. Other combinations are also possible, but it is not possible to have both IRWE and BWE.

The data in this report are based on the SSI caseload at the end of June 2000.

In June 2000, there were 347,148 SSI disabled beneficiaries who were working (6.5 percent of the total SSI disabled caseload) (table 2). Included in this count were 77,782 section 1619(b) participants who do not receive an SSI payment, but who have special SSI recipient status for Medicaid purposes. Over two-thirds (67.3 percent) of the workers had amounts of earned income below the substantial gainful activity (SGA) level of \$700 per month; 25.7 percent earned \$65 or less (table 4).

## Geographic Distribution

Among the States, the percentage of disabled workers varied from a low of 3.0 percent in Alabama to a high of 19.9 percent in South Dakota (table 2). In general, the percentage of disabled workers was higher in the Northern States than in the Southern States.

## Demographic Characteristics

The majority of these disabled workers were male (53.4 percent). Almost half (47.4 percent) had unearned income; 40.6 percent were receiving Social Security benefits (table 4). Comparable figures for all disabled recipients in June 2000 were: 44.5 percent male, 37.9 percent with unearned income, and 30.7 percent receiving Social Security benefits.

## Diagnosis

Disabled workers are more likely to have certain impairments than other disabled recipients. Almost three-fourths (72.5 percent) of the workers had a mental disorder, including 47.5 percent who were diagnosed with mental retardation (table 5). This compares to 58.4 percent of all disabled recipients with a mental disorder, including 24.5 percent with mental retardation.

## Section 1619

The greatest use of work incentive provisions was by participants under section 1619—29.8 percent of disabled workers. This included 7.4 percent under section 1619(a), and 22.4 percent under section 1619(b) (table 3).

## Other Work Incentives

Use of other work incentive provisions continued to have a smaller, but measurable, impact. In June 2000, 4.2 percent of the SSI disabled workers had some of their income excluded under one of these provisions—plan for achieving self support (PASS), (0.3 percent); impairment-related work expenses (IRWE), (2.7 percent), or blind work expenses (BWE), (1.1 percent) (table 15).

A PASS permits an SSI recipient to set aside income and resources to help obtain the training or education necessary for certain specified occupational goals. In June 2000, 395 PASS participants had earnings, which averaged \$622 per month (table 4). However, exclusions under a PASS are not limited to earnings. Of the 1,192 disabled recipients with a PASS, almost two-thirds (63.6 percent) did not have any earnings reported for June 2000 (table 15). For this group, the PASS excluded unearned income such as social security benefits. Out of all PASS participants, 165 had a PASS that excluded only resources.

**Chart 1.—SSI disabled recipients who work,  
December 1987–99**

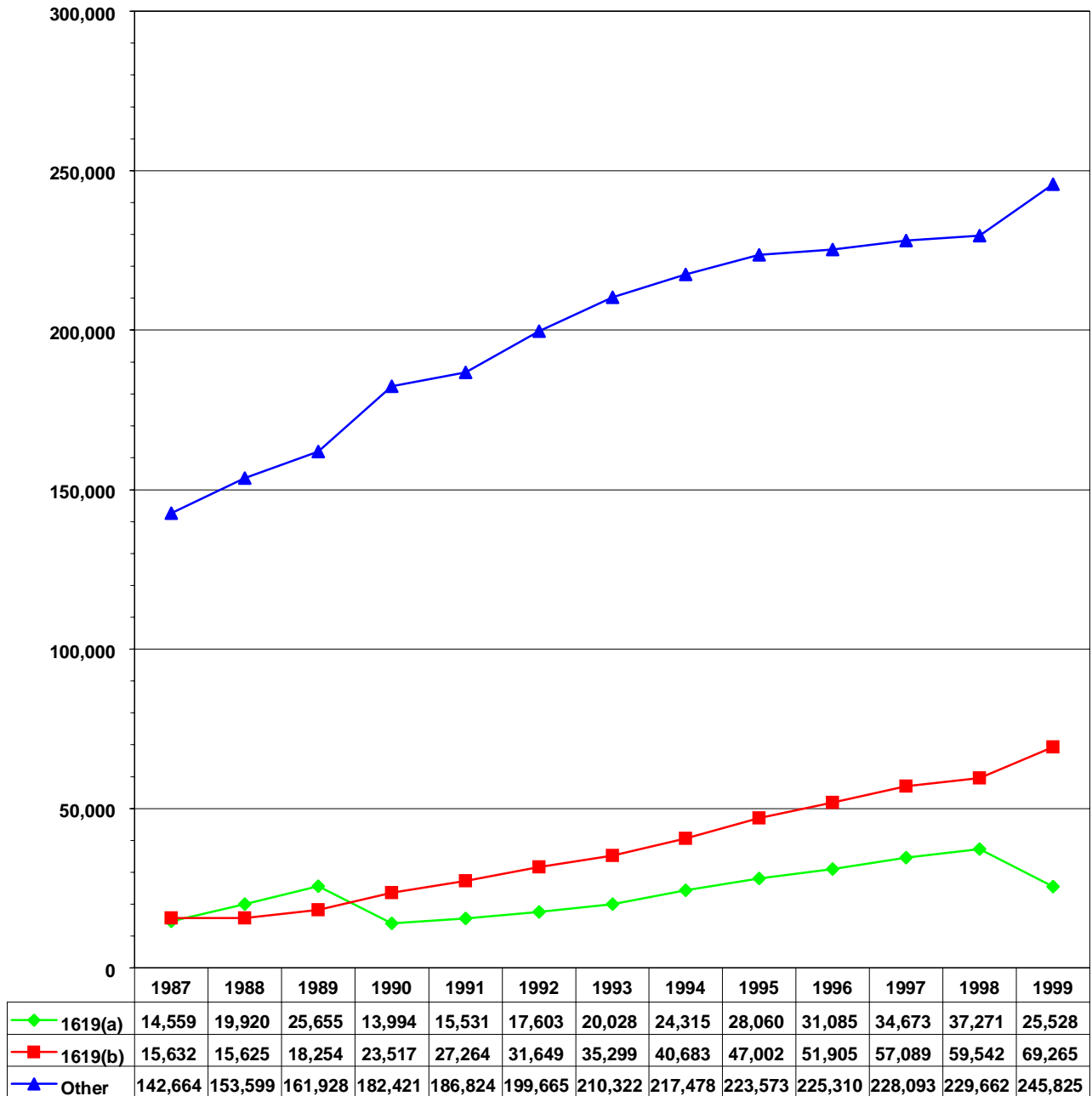
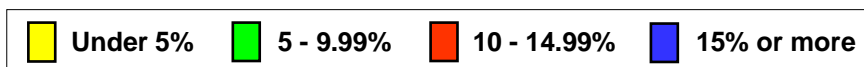
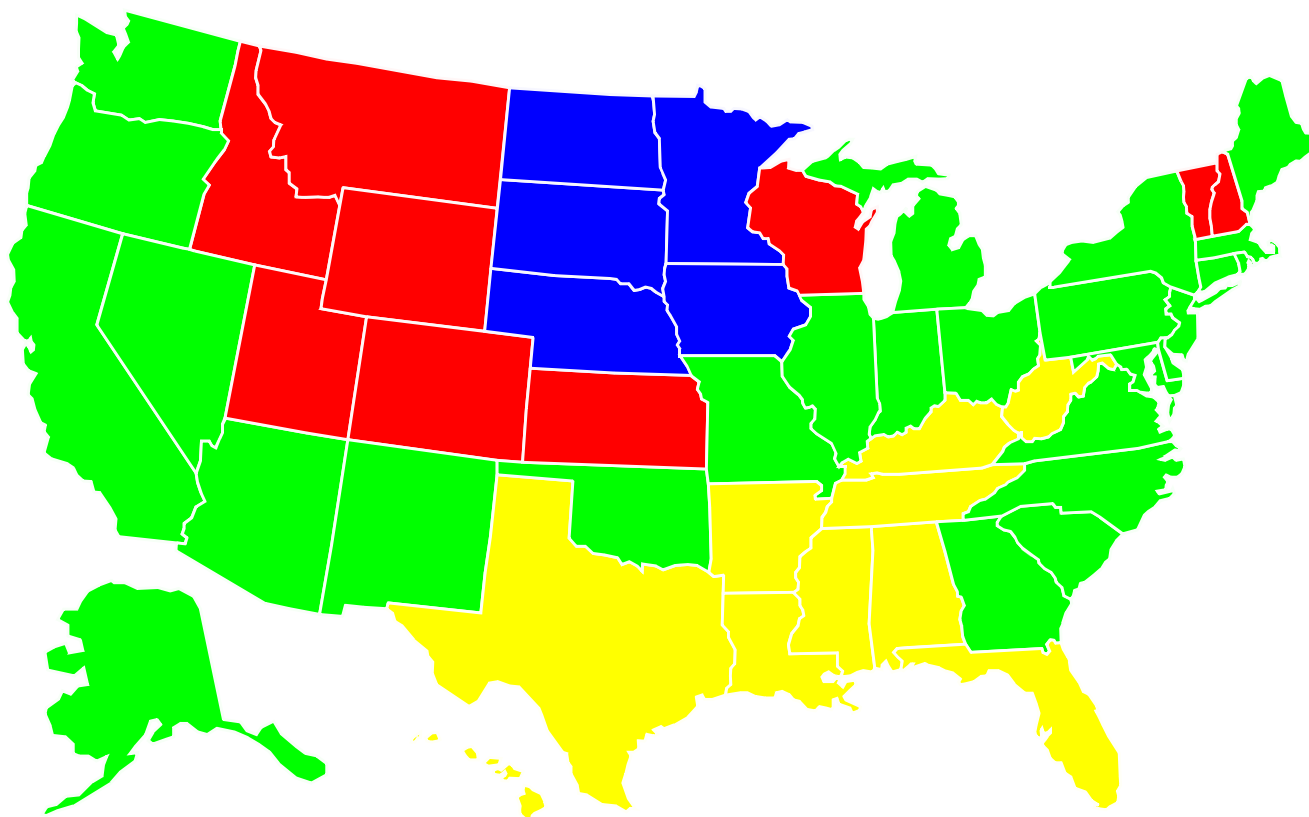
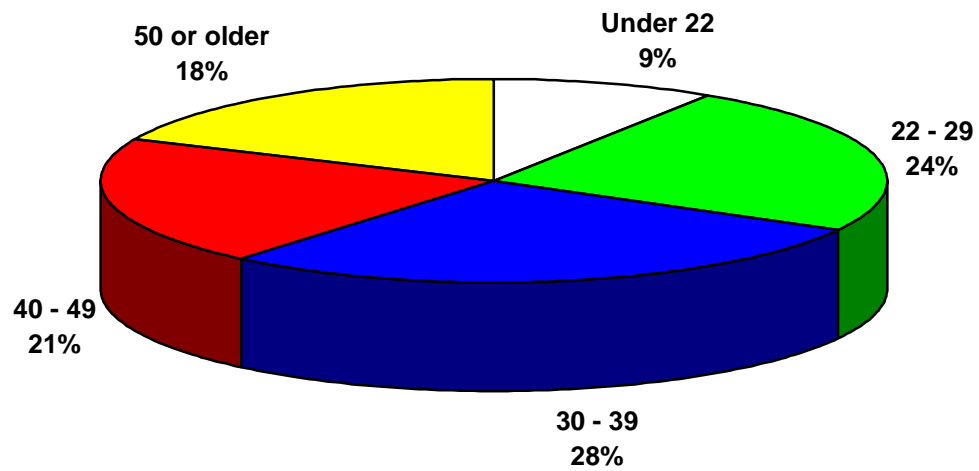




Chart 2.—SSI disabled recipients who work,  
by state, June 2000

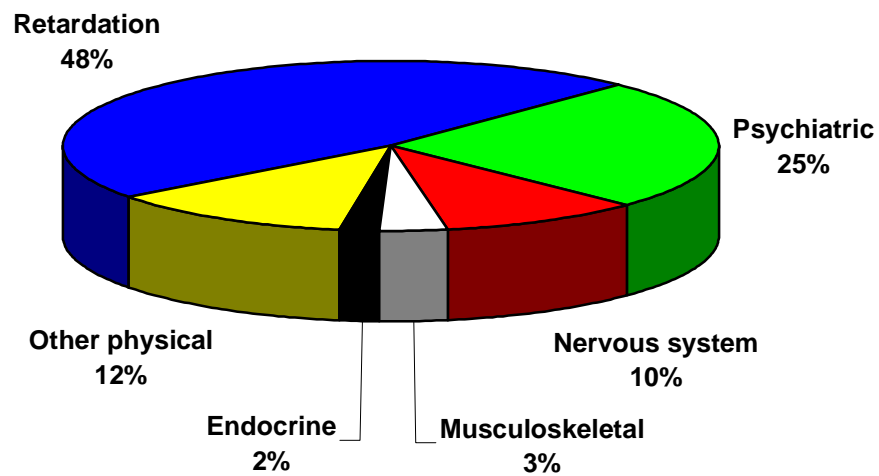


**Chart 3.—SSI disabled recipients who work,  
by age, June 2000**



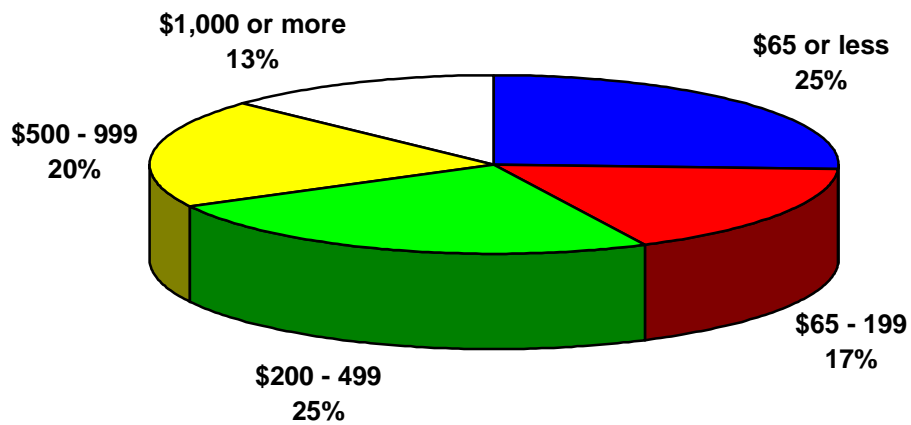
Data includes section 1619(b) participants.

**Chart 4.—SSI disabled recipients who work,  
by diagnosis, June 2000**



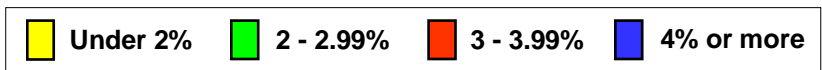
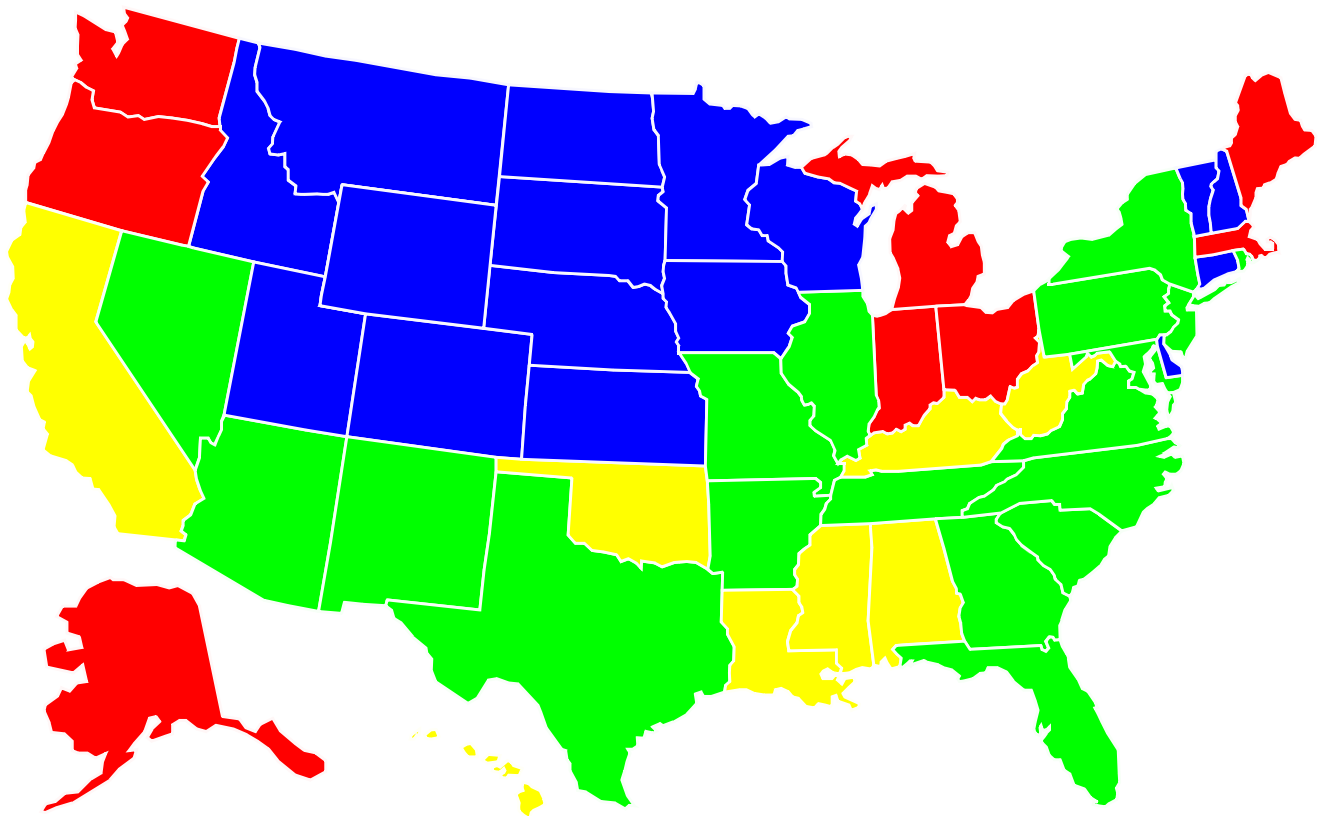
Data includes section 1619(b) participants.

**Chart 5.—SSI disabled recipients who work,  
by monthly earnings, June 2000**



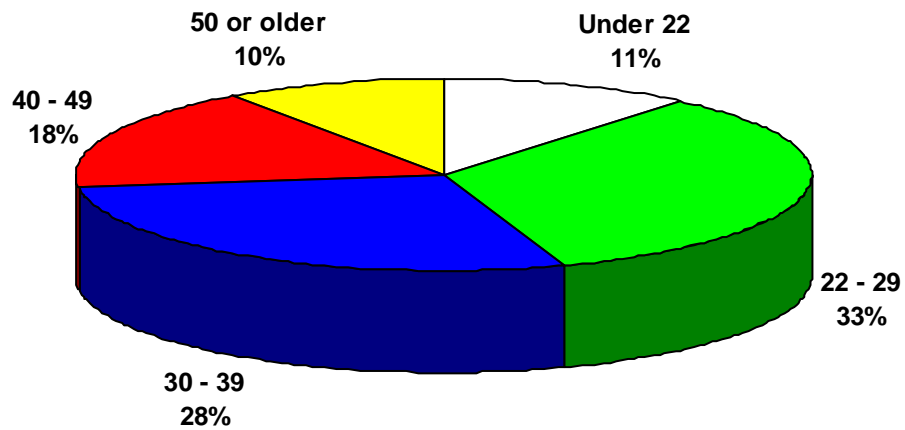
Data includes section 1619(b) participants.

**Chart 6.—Section 1619 participants,  
by state, June 2000**

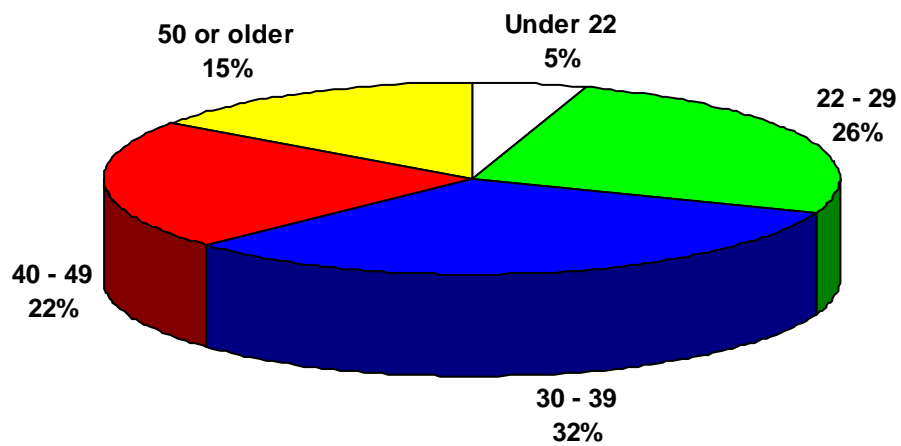


**Chart 7.—Section 1619 participants,  
by age, June 2000**

**1619(a) Participants**

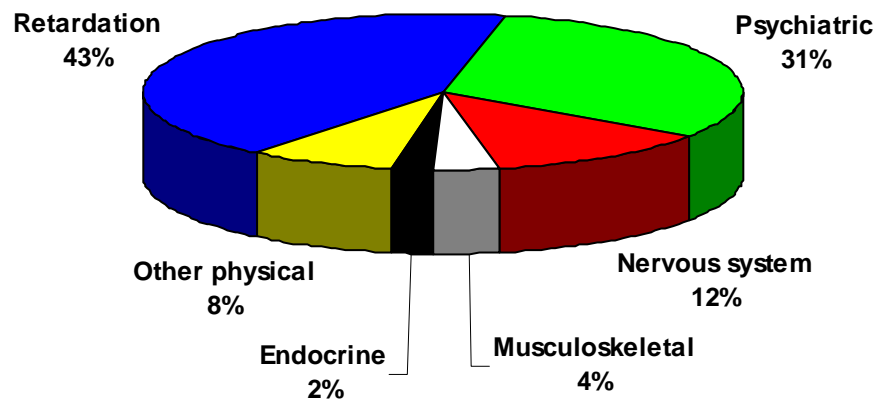


**1619(b) Participants**

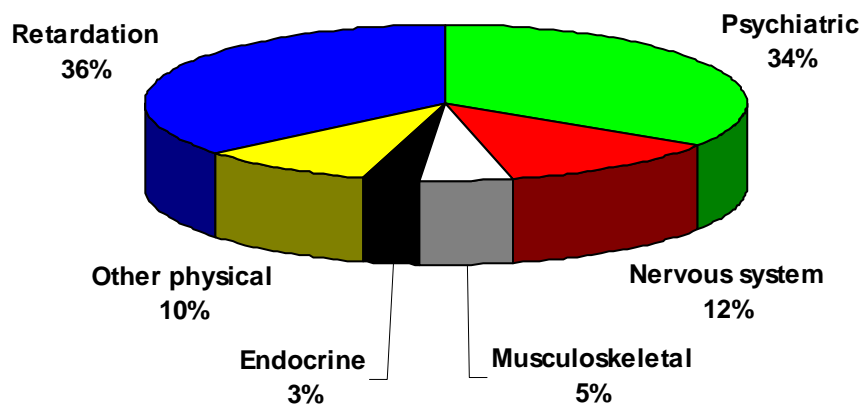


**Chart 8.—Section 1619 participants,  
by diagnosis, June 2000**

**1619(a) Participants**

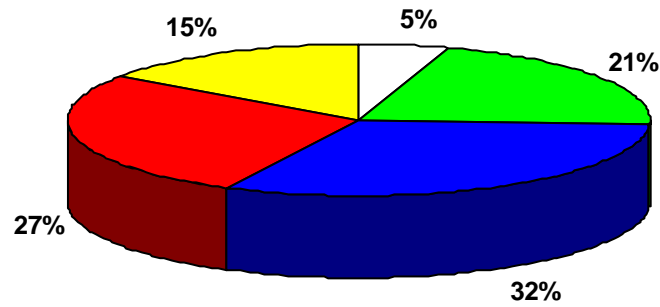


**1619(b) Participants**

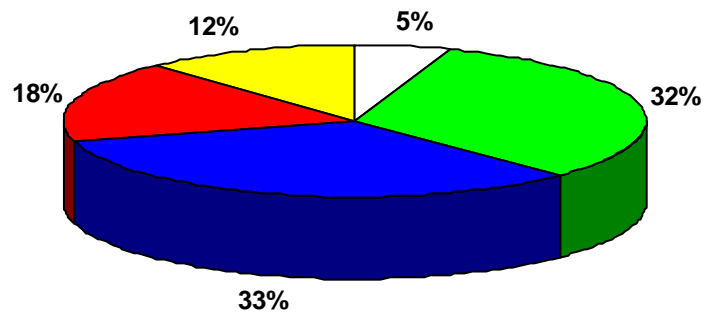


**Chart 9—SSI disabled recipients benefiting from specified work incentive provisions, by age, June 2000**

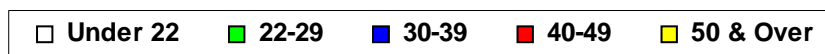
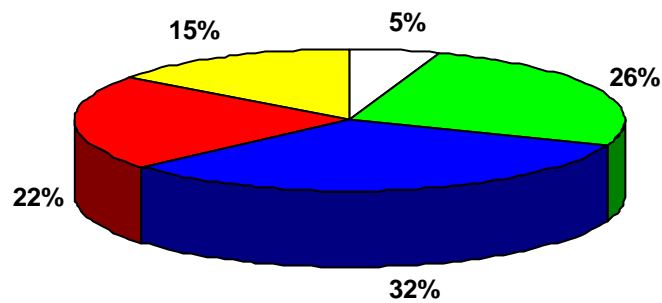
**Recipients with PASS**



**Recipients with IRWE**



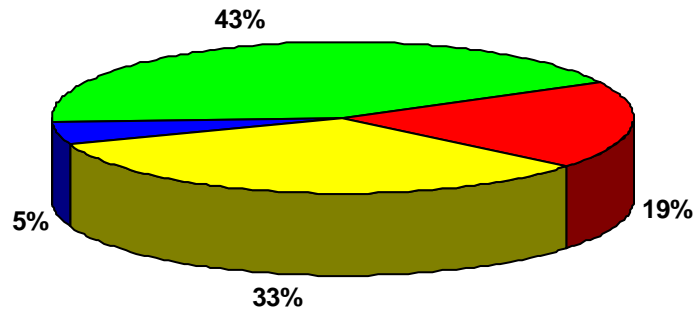
**Recipients with BWE**



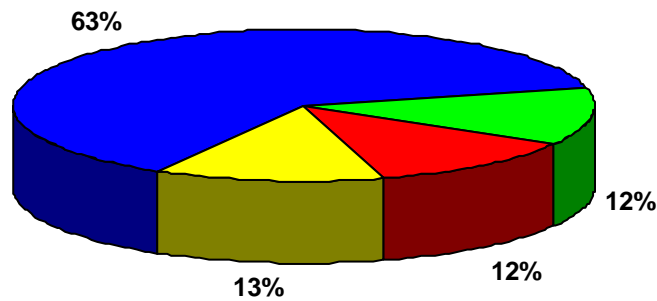


**Chart 10—SSI disabled recipients benefiting from specified work incentive provisions, by diagnosis, June 2000**

**Recipients with PASS**



**Recipients with IRWE**



**Recipients with BWE**

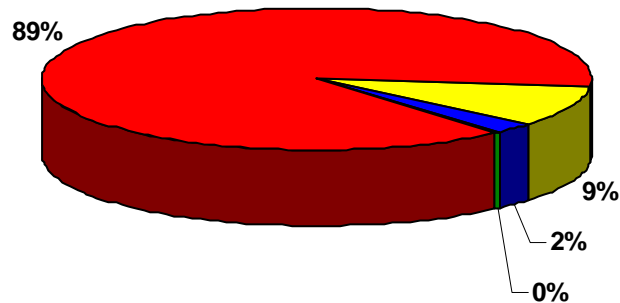


Table 1.—Number of SSI disabled recipients, and number and percentage distribution of disabled working recipients, for selected months, 1976–2000 <sup>1</sup>

At end of selected month	All disabled recipients <sup>2</sup>	Disabled working recipients		
		Receiving payments <sup>3</sup>	1619(b) participants	Percent of disabled recipients
December: <sup>4</sup>				
1976 .....	2,088,242	70,719	...	3.4
1977 .....	2,186,771	83,697	...	3.8
1978 .....	2,249,025	87,697	...	3.9
1979 .....	2,277,859	92,270	...	4.1
1980 .....	2,334,241	99,276	...	4.3
1981 .....	2,340,785	102,632	...	4.4
1982 .....	2,314,364	102,288	5,515	4.7
1983 .....	2,391,262	108,734	5,165	4.8
1987 .....	2,945,244	157,223	15,632	5.9
1988 .....	3,046,074	173,519	15,625	6.2
1989 .....	3,172,270	187,583	18,254	6.5
1990 .....	3,386,603	196,415	23,517	6.5
1991 .....	3,681,050	202,355	27,264	6.2
1992 .....	4,126,816	217,268	31,649	6.0
1993 .....	4,544,777	230,350	35,299	5.8
1994 .....	4,870,564	241,793	40,683	5.8
1995 .....	5,115,014	251,633	47,002	5.8
1996 .....	5,252,991	256,395	51,905	5.9
1997 .....	5,189,724	262,766	57,089	6.2
1998 .....	5,293,829	266,933	59,542	6.2
1999 .....	5,317,861	271,353	69,265	6.4
1998				
March .....	5,235,042	264,830	54,639	6.1
June.....	5,285,950	268,628	55,761	6.1
September.....	5,312,870	272,079	58,183	6.2
December.....	5,293,829	266,933	59,542	6.2
1999				
March .....	5,350,722	268,866	63,431	6.2
June.....	5,354,409	270,989	66,939	6.3
September.....	5,357,789	272,100	70,580	6.4
December.....	5,317,861	271,353	69,265	6.4
2000				
March .....	5,367,023	269,173	69,545	6.3
June.....	5,382,127	269,366	77,782	6.5

<sup>1</sup> Includes SSI blind recipients.

<sup>2</sup> Includes section 1619(b) participants.

<sup>3</sup> Includes section 1619(a) participants and SSI recipients earning less than the Substantial Gainful Activity level, (\$700 effective July 1999).

<sup>4</sup> Data not available for December 1984, 1985, and 1986.

**Disabled Recipients Who Work**

Table 2.—Number of SSI disabled recipients, and number and percentage distribution of SSI disabled working recipients, by state, June 2000 <sup>1</sup>

State	All disabled recipients	Disabled working recipients	
		Number	Percent
Total.....	5,382,127	347,148	6.5
Alabama .....	133,513	3,945	3.0
Alaska.....	7,179	538	7.5
Arizona .....	68,677	3,637	5.3
Arkansas .....	72,654	3,467	4.8
California .....	755,070	42,189	5.6
Colorado.....	46,682	4,801	10.3
Connecticut .....	42,385	4,053	9.6
Delaware .....	10,893	876	8.0
District of Columbia .....	17,871	710	4.0
Florida .....	281,976	11,529	4.1
Georgia.....	164,430	8,439	5.1
Hawaii.....	13,826	682	4.9
Idaho .....	16,921	1,725	10.2
Illinois .....	222,085	14,293	6.4
Indiana.....	83,329	6,524	7.8
Iowa.....	37,552	7,352	19.6
Kansas .....	33,645	4,253	12.6
Kentucky.....	155,722	5,100	3.3
Louisiana .....	143,404	5,277	3.7
Maine.....	26,900	2,244	8.3
Maryland.....	73,320	5,619	7.7
Massachusetts .....	124,820	11,204	9.0
Michigan .....	195,565	16,875	8.6
Minnesota .....	56,674	9,467	16.7
Mississippi.....	107,812	3,409	3.2
Missouri.....	100,596	7,797	7.8
Montana .....	12,849	1,735	13.5
Nebraska.....	19,397	3,209	16.5
Nevada.....	18,446	1,306	7.1
New Hampshire.....	10,966	1,363	12.4
New Jersey.....	114,043	7,887	6.9
New Mexico.....	38,001	1,970	5.2
New York.....	480,475	30,040	6.3
North Carolina .....	158,239	8,368	5.3
North Dakota .....	7,162	1,385	19.3
Ohio.....	228,578	18,539	8.1
Oklahoma .....	62,248	3,721	6.0
Oregon .....	45,357	4,298	9.5
Pennsylvania .....	248,337	15,738	6.3
Rhode Island .....	23,243	1,804	7.8
South Carolina.....	91,309	5,375	5.9
South Dakota.....	11,190	2,222	19.9
Tennessee.....	143,367	6,519	4.5
Texas.....	296,767	14,643	4.9
Utah.....	18,516	2,274	12.3
Vermont.....	11,296	1,160	10.3
Virginia .....	109,135	6,648	6.1
Washington .....	88,436	6,733	7.6
West Virginia .....	65,961	1,978	3.0
Wisconsin.....	79,383	11,443	14.4
Wyoming .....	5,424	765	14.1
Northern Mariana Islands .....	501	20	4.0

<sup>1</sup> Includes 1619(b) participants.

**Disabled Recipients Who Work**

Table 3.—Number of SSI disabled working recipients in section 1619 status, by state, June 2000

State	Total	Section 1619(a)	Section 1619(b)	Other disabled working recipients
Total.....	347,148	25,837	77,782	243,529
Alabama.....	3,945	355	922	2,668
Alaska.....	538	45	135	358
Arizona.....	3,637	314	924	2,399
Arkansas.....	3,467	232	798	2,437
California.....	42,189	4,050	6,588	31,551
Colorado.....	4,801	312	1,175	3,314
Connecticut.....	4,053	223	1,089	2,741
Delaware.....	876	82	269	525
District of Columbia.....	710	59	203	448
Florida.....	11,529	1,078	3,149	7,302
Georgia.....	8,439	620	1,826	5,993
Hawaii.....	682	42	112	528
Idaho.....	1,725	120	427	1,178
Illinois.....	14,293	1,147	3,205	9,941
Indiana.....	6,524	500	1,799	4,225
Iowa.....	7,352	339	1,717	5,296
Kansas.....	4,253	241	1,030	2,982
Kentucky.....	5,100	399	1,188	3,513
Louisiana.....	5,277	530	1,325	3,422
Maine.....	2,244	126	615	1,503
Maryland.....	5,619	400	1,219	4,000
Massachusetts.....	11,204	931	3,348	6,925
Michigan.....	16,875	1,187	4,047	11,641
Minnesota.....	9,467	448	2,417	6,602
Mississippi.....	3,409	342	932	2,135
Missouri.....	7,797	431	1,691	5,675
Montana.....	1,735	83	372	1,280
Nebraska.....	3,209	165	664	2,380
Nevada.....	1,306	93	302	911
New Hampshire.....	1,363	82	426	855
New Jersey.....	7,887	449	1,666	5,772
New Mexico.....	1,970	142	441	1,387
New York.....	30,040	2,161	5,485	22,394
North Carolina.....	8,368	521	1,853	5,994
North Dakota.....	1,385	52	282	1,051
Ohio.....	18,539	1,431	3,917	13,191
Oklahoma.....	3,721	220	662	2,839
Oregon.....	4,298	206	1,073	3,019
Pennsylvania.....	15,738	1,201	3,331	11,206
Rhode Island.....	1,804	107	400	1,297
South Carolina.....	5,375	361	1,030	3,984
South Dakota.....	2,222	79	511	1,632
Tennessee.....	6,519	497	1,652	4,370
Texas.....	14,643	1,132	3,591	9,920
Utah.....	2,274	161	437	1,676
Vermont.....	1,160	111	332	717
Virginia.....	6,648	512	1,530	4,606
Washington.....	6,733	680	2,048	4,005
West Virginia.....	1,978	146	453	1,379
Wisconsin.....	11,443	645	2,970	7,828
Wyoming.....	765	43	198	524
Northern Mariana Islands.....	20	4	6	10

**Disabled Recipients Who Work**

Table 4.—Number and percentage distribution of SSI disabled working recipients and average earnings, by selected characteristics, June 2000 <sup>1</sup>

Selected characteristics	Number	Percent	Average earnings
Total.....	347,148	100.0	\$445
Age:			
Under 18 .....	4,268	1.2	435
18–21 .....	27,367	7.9	436
22–29 .....	83,021	23.9	534
30–39 .....	97,620	28.1	460
40–49 .....	71,502	20.6	427
50–59 .....	39,454	11.4	370
60–64 .....	11,708	3.4	319
65 or older .....	12,208	3.5	223
Sex:			
Male .....	185,341	53.4	459
Female .....	161,807	46.6	430
Earned income: <sup>2</sup>			
Wages .....	330,522	95.2	457
Self-employment .....	17,944	5.2	258
Earning levels:			
\$65 or less .....	89,261	25.7	53
\$66–\$99 .....	16,314	4.7	82
\$100–\$199 .....	42,494	12.2	138
\$200–\$299 .....	32,899	9.5	235
\$300–\$399 .....	27,017	7.8	334
\$400–\$499 .....	25,608	7.4	434
\$500–\$599 .....	21,774	6.3	527
\$600–\$699 .....	16,546	4.8	630
\$700–\$799 .....	11,308	3.3	732
\$800–\$899 .....	10,546	3.0	831
\$900–\$999 .....	8,008	2.3	935
\$1,000 or more .....	45,373	13.1	1,506
Unearned income: <sup>2</sup>			
None .....	182,700	52.6	515
Social Security .....	141,087	40.6	346
Other pensions .....	3,160	.9	284
Assistance based on need .....	99	.0	537
Interest, dividends, etc .....	25,663	7.4	392
Other .....	12,256	3.5	526
Work incentives: <sup>2</sup>			
Section 1619(a) .....	25,837	7.4	933
Section 1619(b) .....	77,782	22.4	1,014
PASS <sup>3</sup> .....	395	.1	622
IRWE .....	9,459	2.7	449
BWE .....	3,978	1.1	877

<sup>1</sup> Includes section 1619(b) participants.

<sup>2</sup> Persons with more than one type are shown under each type.

<sup>3</sup> Number of working recipients with a PASS. See Tables 14–17 for data on all recipients with a PASS.

Table 5.—Percentage distribution of SSI disabled recipients and disabled working recipients age 18–64, by diagnosis, June 2000 <sup>1</sup>

Diagnosis	All disabled recipients	Disabled working recipients
Total number .....	3,690,970	330,672
Total percent <sup>2</sup> .....	100.0	100.0
Infectious and parasitic diseases .....	2.2	1.2
Neoplasms .....	1.3	.7
Endocrine, nutritional, and metabolic .....	5.6	2.0
Mental disorders:		
Schizophrenia .....	10.9	9.4
Other psychiatric .....	23.0	15.5
Mental retardation .....	24.5	47.5
Diseases of the—		
Nervous system and sense organs <sup>3</sup> .....	8.3	10.1
Circulatory system .....	5.7	1.5
Respiratory system .....	2.5	.8
Digestive system .....	.9	.3
Genitourinary system .....	1.2	.8
Musculoskeletal system and connective tissues .....	9.6	3.1
Congenital anomalies .....	.4	.9
Injury and poisoning .....	2.9	1.6
Other .....	.9	4.4

<sup>1</sup> Information for all disabled recipients is based on universe counts for December 1999. Information for section 1619 participants is available from SSI source files.

<sup>2</sup> Includes only recipients whose diagnosis information is specifically identified in the source files.

<sup>3</sup> Most disabled recipients classified as blind are included in this category. A few blind recipients with a primary impairment other than diseases of the eye are coded in other categories. Also, a few recipients are classified with diseases of the eye, but their impairment does not meet the definition of blindness.

**Disabled Recipients Who Work**

Table 6.—Number and percentage distribution of SSI disabled recipients age 18–64, with earnings, and in 1619(b) status, by age, June 2000

Age	All disabled recipients <sup>1</sup>		With earnings		In 1619(b) status	
	Number	Percent	Number	Percent	Number	Percent
Total.....	3,812,551	100.0	330,672	8.7	75,429	2.0
18–21 .....	230,477	6.0	27,367	11.9	3,501	1.5
22–29 .....	490,174	12.9	83,021	16.9	19,954	4.1
30–39 .....	780,230	20.5	97,620	12.5	24,987	3.2
40–49 .....	945,699	24.8	71,502	7.6	16,966	1.8
50–59 .....	918,551	24.1	39,454	4.3	7,681	.8
60–64 .....	447,420	11.7	11,708	2.6	2,340	.5

<sup>1</sup> Includes section 1619(b) participants.

Disabled Recipients Who Work

Table 7.—Number of SSI disabled recipients age 18–64, and number and percentage distribution of section 1619 participants, by state, June 2000

State ranking	State	All disabled recipients <sup>1</sup>	Section 1619 participants	
			Number	Percent
	Total .....	3,812,850	100,902	2.65
1	South Dakota .....	7,839	569	7.26
2	Iowa .....	28,709	2,020	7.04
3	Minnesota .....	42,804	2,813	6.57
4	Wisconsin .....	57,012	3,537	6.20
5	North Dakota .....	5,309	327	6.16
6	New Hampshire .....	8,468	492	5.81
7	Wyoming .....	4,130	236	5.71
8	Nebraska .....	14,299	807	5.64
9	Vermont .....	8,675	439	5.06
10	Kansas .....	24,557	1,234	5.03
11	Delaware .....	7,236	338	4.67
12	Montana .....	9,878	444	4.49
13	Utah .....	13,663	589	4.31
14	Idaho .....	12,564	537	4.27
15	Colorado .....	34,741	1,455	4.19
16	Connecticut .....	32,006	1,288	4.02
17	Massachusetts .....	105,576	4,180	3.96
18	Washington .....	67,699	2,672	3.95
19	Indiana .....	60,141	2,250	3.74
20	Oregon .....	34,688	1,250	3.60
21	Michigan .....	143,258	5,105	3.56
22	Maine .....	21,255	721	3.39
23	Northern Mariana Islands .....	305	10	3.28
24	Alaska .....	5,640	176	3.12
25	Ohio .....	167,752	5,205	3.10
26	Maryland .....	50,991	1,570	3.08
27	Rhode Island .....	17,118	495	2.89
28	Missouri .....	73,769	2,070	2.81
29	Nevada .....	14,294	384	2.69
30	Illinois .....	158,133	4,248	2.69
31	Virginia .....	75,083	2,000	2.66
32	New Jersey .....	78,518	2,075	2.64
33	Arizona .....	48,023	1,200	2.50
34	Pennsylvania .....	180,077	4,419	2.45
35	Texas .....	202,125	4,583	2.27
36	Florida .....	180,498	4,087	2.26
37	New York .....	335,370	7,477	2.23
38	South Carolina .....	60,841	1,344	2.21
39	North Carolina .....	104,671	2,298	2.20
40	New Mexico .....	26,281	572	2.18
41	Georgia .....	112,532	2,370	2.11
42	Arkansas .....	48,078	994	2.07
43	District of Columbia .....	12,185	250	2.05
44	Tennessee .....	102,634	2,095	2.04
45	Oklahoma .....	43,660	856	1.96
46	California .....	533,653	10,255	1.92
47	Louisiana .....	96,453	1,808	1.87
48	Mississippi .....	71,998	1,236	1.72
49	Hawaii .....	10,802	150	1.39
50	Alabama .....	90,894	1,239	1.36
51	Kentucky .....	114,585	1,542	1.35
52	West Virginia .....	51,081	591	1.16

<sup>1</sup> Includes section 1619(b) participants.



Table 8.—Number of SSI disabled recipients in March 2000, by program status and earnings in June 2000 <sup>1</sup>

Program status in March 2000	Total	Program status in June 2000								
		Receiving payments			Not receiving payments					
		Section 1619(a)	Have earnings	No earnings	Ineligible because of earned income			Other excess income	Other non-pay	
					Section 1619(b)	No longer eligible				
				Does not need/use Medicaid		Can pay for equivalent coverage	Both reasons			
Total.....	5,248,660	24,600	234,200	4,742,240	75,300	580	120	420	45,860	125,340
Receiving payments:										
Section 1619(a).....	24,840	16,660	1,560	2,920	2,230	50	20	0	240	1,160
Have earnings .....	242,110	2,680	209,750	17,520	4,390	30	10	40	2,150	5,540
No earnings .....	4,911,540	4,400	21,110	4,715,910	11,410	170	40	80	42,120	116,300
Not receiving payments:										
Section 1619(b).....	70,170	860	1,780	5,890	57,270	330	50	300	1,350	2,340

<sup>1</sup> Based on 10-percent sample files.

**Section 1619 Participants**

Table 9.—Number of section 1619(a) and 1619(b) participants and percentage change from preceding period, for selected months, 1982–2000

At end of selected month	1619(a) participants		1619(b) participants <sup>1</sup>	
	Number	Percentage change	Number	Percentage change
December: <sup>2</sup>				
1982 .....	287	...	5,515	...
1983 .....	392	...	5,165	...
1987 .....	14,559	...	15,632	...
1988 .....	19,920	36.8	15,625	.0
1989 .....	25,655	28.8	18,254	16.8
1990 .....	13,994	-45.5	23,517	28.8
1991 .....	15,531	11.0	27,264	15.9
1992 .....	17,603	13.3	31,649	16.1
1993 .....	20,028	13.8	35,299	11.5
1994 .....	24,315	21.4	40,683	15.3
1995 .....	28,060	15.4	47,002	15.5
1996 .....	31,085	10.8	51,905	10.4
1997 .....	34,673	11.5	57,089	10.0
1998 .....	37,271	7.5	59,542	4.3
1999 .....	25,528	-31.5	69,265	16.3
1998				
March .....	34,637	-1	54,639	-4.3
June.....	35,528	2.6	55,761	2.1
September.....	37,216	4.8	58,183	4.3
December.....	37,271	.1	59,542	2.3
1999				
March .....	39,457	5.9	63,431	6.5
June.....	23,304	-40.9	66,939	5.5
September.....	23,914	2.6	70,580	5.4
December.....	25,528	6.7	69,265	-1.9
2000				
March .....	25,055	-1.9	69,545	.4
June.....	25,837	3.1	77,782	11.8

<sup>1</sup> Includes blind participants. For June 2000, of the 77,782 participants, 1,326 were blind.

<sup>2</sup> Data not available for December 1984, 1985, and 1986.

NOTE: In January 1990, the Substantial Gainful Activity (SGA) level was raised from \$300 to \$500 and section 1619(a) participants with earnings below \$500 became eligible for regular SSI benefits rather than the special cash payments under section 1619(a). This is reflected in the decrease shown for 1990. In July 1999, the SGA level was increased to \$700, resulting in the decrease shown for June 1999.

## Section 1619 Participants

Table 10.—Number and average earnings of section 1619(a) participants, by state, for selected months, 1999–2000

State	June 1999		March 2000		June 2000	
	Number	Average earnings	Number	Average earnings	Number	Average earnings
Total.....	23,304	\$916	25,055	\$932	25,837	\$933
Alabama .....	330	893	386	905	355	908
Alaska.....	36	890	35	964	45	911
Arizona.....	270	901	314	917	314	909
Arkansas.....	213	874	250	901	232	908
California.....	3,587	1,003	3,913	1,020	4,050	1,025
Colorado.....	278	887	299	903	312	902
Connecticut.....	205	870	228	893	223	886
Delaware.....	68	894	79	893	82	906
District of Columbia.....	49	860	62	901	59	908
Florida.....	993	880	1,048	904	1,078	905
Georgia.....	577	889	612	893	620	891
Hawaii.....	33	914	37	897	42	918
Idaho.....	107	893	93	902	120	918
Illinois.....	1,021	892	1,099	913	1,147	915
Indiana.....	463	903	506	915	500	916
Iowa.....	321	888	330	912	339	910
Kansas.....	277	895	266	913	241	913
Kentucky.....	347	915	380	934	399	924
Louisiana.....	487	882	553	904	530	903
Maine.....	106	904	127	926	126	946
Maryland.....	330	873	378	903	400	905
Massachusetts.....	854	935	920	946	931	955
Michigan.....	1,108	899	1,147	924	1,187	922
Minnesota.....	402	887	450	907	448	897
Mississippi.....	287	905	348	903	342	906
Missouri.....	369	894	389	909	431	917
Montana.....	61	893	73	886	83	887
Nebraska.....	140	901	150	903	165	907
Nevada.....	80	898	99	923	93	918
New Hampshire.....	85	895	90	926	82	913
New Jersey.....	436	913	444	920	449	910
New Mexico.....	131	899	137	877	142	894
New York.....	1,903	936	2,071	938	2,161	945
North Carolina.....	455	890	452	907	521	898
North Dakota.....	44	877	46	912	52	905
Ohio.....	1,222	888	1,346	909	1,431	907
Oklahoma.....	173	885	180	912	220	904
Oregon.....	188	895	183	924	206	917
Pennsylvania.....	1,057	912	1,118	925	1,201	920
Rhode Island.....	102	934	106	931	107	943
South Carolina.....	293	887	320	903	361	907
South Dakota.....	99	881	80	887	79	899
Tennessee.....	482	889	524	900	497	905
Texas.....	1,089	894	1,146	904	1,132	901
Utah.....	144	890	171	888	161	899
Vermont.....	99	949	97	1,000	111	974
Virginia.....	418	892	470	923	512	916
Washington.....	615	909	640	929	680	925
West Virginia.....	149	915	156	934	146	918
Wisconsin.....	660	902	661	915	645	914
Wyoming.....	58	916	43	907	43	908
Northern Mariana Islands.....	3	755	3	860	4	870

## Section 1619 Participants

Table 11.—Number and average earnings of section 1619(b) participants, by state, for selected months, 1999–2000

State	June 1999		March 2000		June 2000	
	Number	Average earnings	Number	Average earnings	Number	Average earnings
Total.....	66,939	\$997	69,545	\$989	77,782	\$1,014
Alabama.....	871	1,098	807	1,060	922	1,092
Alaska <sup>1</sup> .....	139	962	127	991	135	1,047
Arizona.....	856	1,019	879	1,023	924	1,036
Arkansas.....	678	905	705	917	798	958
California.....	5,431	1,215	5,846	1,225	6,588	1,255
Colorado.....	962	997	1,049	1,006	1,175	1,030
Connecticut <sup>1</sup> .....	899	878	995	861	1,089	879
Delaware.....	233	1,044	239	1,055	269	1,054
District of Columbia.....	141	1,204	184	1,155	203	1,172
Florida.....	2,644	1,100	2,808	1,010	3,149	1,009
Georgia.....	1,647	1,041	1,601	980	1,826	1,004
Hawaii <sup>1</sup> .....	90	882	107	934	112	878
Idaho <sup>1</sup> .....	372	820	368	870	427	899
Illinois <sup>1</sup> .....	2,623	1,006	2,814	1,034	3,205	1,046
Indiana <sup>1</sup> .....	1,617	909	1,615	878	1,799	910
Iowa.....	1,536	778	1,603	768	1,717	777
Kansas <sup>1</sup> .....	949	888	959	887	1,030	921
Kentucky.....	1,039	1,074	1,074	1,134	1,188	1,152
Louisiana.....	1,225	991	1,219	910	1,325	927
Maine.....	472	833	529	868	615	884
Maryland.....	962	1,015	1,045	1,007	1,219	1,054
Massachusetts.....	2,956	1,080	3,009	1,066	3,348	1,087
Michigan.....	3,453	975	3,657	994	4,047	1,024
Minnesota <sup>1</sup> .....	2,048	889	2,175	876	2,417	883
Mississippi.....	759	1,164	853	1,118	932	1,149
Missouri <sup>1</sup> .....	1,398	855	1,494	821	1,691	840
Montana.....	321	723	347	750	372	748
Nebraska <sup>1</sup> .....	578	810	595	820	664	861
Nevada <sup>1</sup> .....	266	990	264	991	302	1,005
New Hampshire <sup>1</sup> .....	343	845	398	872	426	966
New Jersey.....	1,469	1,184	1,505	1,116	1,666	1,115
New Mexico.....	368	878	366	911	441	928
New York.....	4,742	1,111	4,824	1,118	5,485	1,150
North Carolina.....	1,661	975	1,638	965	1,853	977
North Dakota <sup>1</sup> .....	267	842	253	815	282	779
Ohio <sup>1</sup> .....	3,328	966	3,417	963	3,917	1,031
Oklahoma <sup>1</sup> .....	568	806	583	785	662	846
Oregon <sup>1</sup> .....	946	831	962	829	1,073	865
Pennsylvania.....	2,838	919	2,936	901	3,331	928
Rhode Island.....	305	1,026	368	1,006	400	1,076
South Carolina.....	975	993	908	929	1,030	967
South Dakota.....	444	787	474	772	511	796
Tennessee.....	1,467	1,072	1,462	1,087	1,652	1,109
Texas.....	3,256	961	3,331	941	3,591	951
Utah <sup>1</sup> .....	442	915	397	842	437	860
Vermont.....	261	775	305	883	332	873
Virginia <sup>1</sup> .....	1,262	910	1,346	917	1,530	954
Washington.....	1,743	999	1,824	1,017	2,048	1,041
West Virginia.....	337	1,057	406	1,164	453	1,152
Wisconsin.....	2,573	897	2,711	873	2,970	892
Wyoming.....	173	684	158	724	198	746
Northern Mariana Islands.....	6	1,103	6	834	6	804

<sup>1</sup> The Social Security Administration identifies persons as potential participants, final Medicaid determinations are made by the state.

Section 1619 Participants

Table 12.—Number and average earnings of section 1619(a) and 1619(b) participants, by selected characteristics, June 2000

Selected characteristics	1619(a) participants		1619(b) participants	
	Number	Average earnings	Number	Average earnings
Total.....	25,837	\$933	77,782	\$1,014
Age:				
Under 18 .....	259	866	452	(1)
18–21 .....	2,594	900	3,501	1,142
22–29 .....	8,685	926	19,954	1,130
30–39 .....	7,258	943	24,987	977
40–49 .....	4,540	946	16,966	971
50–59 .....	2,027	944	7,681	957
60–64 .....	369	952	2,340	840
65 or older .....	105	939	1,901	776
Sex:				
Male .....	14,509	939	42,429	1,040
Female .....	11,328	924	35,353	982
Earned income: <sup>2</sup>				
Wages .....	25,465	933	76,178	1,016
Self-employment .....	508	907	2,200	1,026
Earning levels:				
Less than \$400.....	...	...	11,595	268
\$400–\$499 .....	...	...	7,254	436
\$500–\$599 .....	...	...	7,459	526
\$600–\$699 .....	...	...	6,056	630
\$700–\$899 .....	11,523	795	7,733	779
\$900–\$1,199 .....	12,564	1,003	9,512	1,042
\$1,200 or more .....	1,750	1,340	28,173	1,736
Unearned income: <sup>2</sup>				
None.....	22,980	937	27,413	1,485
Social security .....	720	845	46,385	704
Other pensions.....	48	908	603	853
Assistance based on need.....	3	769	29	1,005
Interest, dividends, etc .....	1,573	932	5,252	892
Other .....	647	881	3,543	1,097
Work incentives: <sup>2</sup>				
PASS <sup>3</sup> .....	133	1,156	0	0
IRWE .....	934	969	1,713	892
BWE .....	9	1,548	747	1,281

<sup>1</sup> Data not available.

<sup>2</sup> Persons with more than one type are shown under each type.

<sup>3</sup> Includes 11 persons with PASS plans that exclude only resources.

Table 13.—Percentage distribution of SSI disabled recipients and section 1619(a) and 1619(b) participants age 18–64, by diagnosis, June 2000 <sup>1</sup>

Diagnosis	All disabled recipients	1619(a) participants	1619(b) participants
Total number .....	3,690,970	25,473	75,429
Total percent <sup>2</sup> .....	100.0	100.0	100.0
Infectious and parasitic diseases .....	2.2	1.5	2.2
Neoplasms .....	1.3	1.0	1.3
Endocrine, nutritional, and metabolic .....	5.6	2.4	2.9
Mental disorders:			
Schizophrenia .....	10.9	9.8	11.5
Other psychiatric .....	23.0	21.4	22.6
Mental retardation .....	24.5	42.9	36.1
Diseases of the—			
Nervous system and sense organs <sup>3</sup> .....	8.3	12.1	12.2
Circulatory system .....	5.7	1.7	2.2
Respiratory system .....	2.5	1.1	1.1
Digestive system .....	.9	.4	.6
Genitourinary system .....	1.2	1.3	1.6
Musculoskeletal system and connective tissues .....	9.6	3.6	5.1
Congenital anomalies .....	.4	.9	.8
Injury and poisoning .....	2.9	2.3	2.9
Other .....	.9	2.1	2.1

<sup>1</sup> Information for all disabled recipients is based on universe counts for December 1999. Information for section 1619 participants is available from SSI source files.

<sup>2</sup> Includes only recipients whose diagnosis information is specifically identified in the source files.

<sup>3</sup> Most disabled recipients classified as blind are included in this category. A few blind recipients with a primary impairment other than diseases of the eye are coded in other categories. Also, a few recipients are classified with diseases of the eye, but their impairment does not meet the definition of blindness.

**Other Work Incentive Participants**

Table 14.—Number of SSI disabled recipients benefiting from specified work incentive provisions, by state, June 2000

State	Plans for achieving self-support (PASS) <sup>1</sup>	Impairment-related work expenses (IRWE)	Blind work expenses (BWE)
Total.....	1,192	9,459	3,979
Alabama .....	22	222	46
Alaska .....	3	12	1
Arizona .....	12	105	41
Arkansas .....	9	99	51
California .....	259	788	551
Colorado.....	12	45	43
Connecticut .....	3	149	43
Delaware.....	0	42	9
District of Columbia .....	3	5	5
Florida .....	42	480	129
Georgia.....	19	453	84
Hawaii.....	4	15	13
Idaho .....	2	11	5
Illinois .....	3	331	95
Indiana.....	5	174	82
Iowa.....	27	74	104
Kansas .....	16	311	40
Kentucky.....	36	121	58
Louisiana.....	3	133	55
Maine.....	24	53	27
Maryland.....	21	300	48
Massachusetts .....	57	274	298
Michigan .....	50	326	130
Minnesota.....	59	170	83
Mississippi.....	8	61	79
Missouri .....	18	215	65
Montana .....	13	14	13
Nebraska.....	13	62	17
Nevada.....	5	29	22
New Hampshire.....	8	30	9
New Jersey.....	33	231	75
New Mexico.....	4	141	18
New York .....	101	755	311
North Carolina .....	28	394	134
North Dakota .....	2	5	2
Ohio.....	54	176	163
Oklahoma .....	1	101	17
Oregon .....	7	39	59
Pennsylvania.....	20	514	193
Rhode Island .....	6	16	16
South Carolina.....	8	108	69
South Dakota.....	5	33	3
Tennessee.....	16	229	78
Texas.....	30	372	242
Utah.....	3	85	19
Vermont.....	13	8	7
Virginia .....	22	598	102
Washington .....	8	118	72
West Virginia .....	4	31	25
Wisconsin.....	69	397	124
Wyoming .....	2	4	4
Northern Mariana Islands.....	0	0	0

<sup>1</sup> Includes 165 persons with a PASS that excludes only resources.

**Other Work Incentive Participants**

Table 15.—Number of SSI disabled recipients benefiting from specified work incentive provisions, by selected characteristics, June 2000

Selected characteristics	Plans for achieving self-support (PASS) <sup>1</sup>	Impairment-related work expenses (IRWE)	Blind work expenses (BWE)
Total.....	1,192	9,459	3,979
Age:			
Under 18 .....	4	12	6
18–21 .....	54	482	199
22–29 .....	253	3,062	1,017
30–39 .....	373	3,108	1,313
40–49 .....	327	1,673	856
50–59 .....	156	770	409
60–64 .....	22	207	100
65 or older .....	3	145	79
Sex:			
Male .....	538	5,075	2,226
Female .....	654	4,384	1,753
Earned income: <sup>2</sup>			
Wages .....	383	9,398	3,853
Self-employment .....	58	90	158
Earning levels:			
\$65 or less .....	758	0	1
\$66–\$99 .....	21	934	257
\$100–\$199 .....	6	492	109
\$200–\$299 .....	41	1,505	342
\$300–\$399 .....	32	1,322	309
\$400–\$499 .....	45	1,083	264
\$500–\$599 .....	58	966	252
\$600–\$699 .....	47	802	238
\$700–\$799 .....	37	601	193
\$800–\$899 .....	34	362	198
\$900–\$999 .....	31	525	379
\$1,000 or more .....	82	867	1,437
Unearned income: <sup>2</sup>			
None .....	244	4,540	2,133
Social Security .....	889	4,252	1,536
Other pensions .....	11	80	18
Assistance based on need .....	0	1	0
Interest, dividends, etc .....	83	861	360
Other .....	67	267	162

<sup>1</sup> Includes 165 persons with a PASS that excludes only resources.

<sup>2</sup> Persons with more than one type are shown under each type.



**Other Work Incentive Participants**

Table 16.—Percentage distribution of SSI disabled recipients benefiting from specified work incentive provisions, by diagnosis, June 2000

Diagnosis	Plans for achieving self-support (PASS) <sup>1</sup>	Impairment-related work expenses (IRWE)	Blind work expenses (BWE)
Total number .....	1,192	9,459	3,979
Total percent <sup>2</sup> .....	100.0	100.0	100.0
Infectious and parasitic diseases .....	1.9	.7	.2
Neoplasms .....	1.0	.4	.3
Endocrine, nutritional, and metabolic .....	2.8	.6	.7
Mental disorders:			
Schizophrenia .....	11.0	4.3	.0
Other psychiatric .....	32.4	8.1	.3
Mental retardation .....	4.5	62.9	2.3
Diseases of the—			
Nervous system and sense organs <sup>3</sup> .....	18.9	12.0	88.0
Circulatory system .....	2.6	.8	1.1
Respiratory system .....	1.0	.2	.0
Digestive system .....	1.0	.1	.0
Genitourinary system .....	1.6	.3	.1
Musculoskeletal system and connective tissues .....	7.9	.9	.1
Congenital anomalies .....	.6	1.8	1.6
Injury and poisoning .....	11.8	2.2	.3
Other .....	1.0	4.5	4.8

<sup>1</sup> Includes 165 persons with a PASS that excludes only resources.

<sup>2</sup> Includes only recipients whose diagnosis information is specifically identified on the source files.

<sup>3</sup> Most disabled recipients classified as blind are included in this category. A few blind recipients with a primary impairment other than diseases of the eye are coded in other categories. Also, a few recipients are classified with diseases of the eye, but their impairment does not meet the definition of blindness.

**Other Work Incentive Participants**

Table 17.—Percentage distribution of persons with income excluded under specified work incentive provisions, by amount excluded, June 2000

Amount excluded	Plans for achieving self-support (PASS) <sup>1</sup>	Impairment-related work expenses (IRWE)	Blind work expenses (BWE)
Total number .....	1,027	9,459	3,979
Total percent.....	100.0	100.0	100.0
Under \$25.....	1.0	21.1	15.4
\$25–\$49 .....	1.2	27.2	9.7
\$50–\$99 .....	3.3	30.7	16.1
\$100–\$199 .....	10.4	14.2	17.6
\$200–\$299 .....	15.5	3.7	12.7
\$300–\$499 .....	31.5	2.1	15.0
\$500–\$999 .....	33.4	.8	11.1
\$1,000 or more .....	3.8	.2	2.5

<sup>1</sup> Data does not include PASS that exclude only resources.