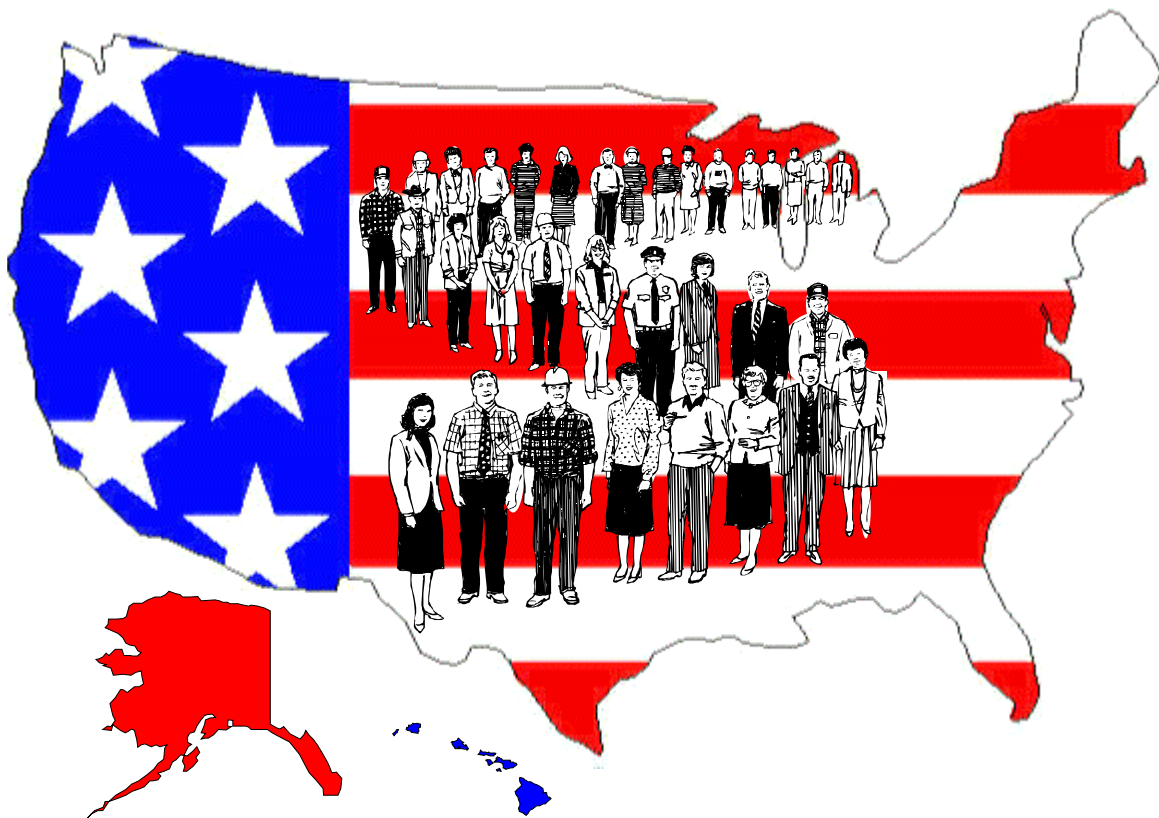


**SSI DISABLED RECIPIENTS
WHO WORK
SEPTEMBER 2000**



**SOCIAL SECURITY ADMINISTRATION
OFFICE OF POLICY
OFFICE OF RESEARCH, EVALUATION, AND STATISTICS**

SSI Disabled Recipients Who Work

September 2000

Social Security Administration
Office of Policy
Office of Research, Evaluation and Statistics
Division of SSI Statistics and Analysis

This quarterly report was prepared by Clark Pickett. All questions pertaining to the data and requests for additional copies of this report should be directed to him at Social Security Administration, OP/ORES/DSSA, 4-C-15 Operations Building, Baltimore, MD 21235-6401; e-mail Clark.Pickett@ssa.gov; fax 410-597-0151; or phone 410-965-9016. This report is also available on the Internet at <http://www.ssa.gov/policy/programs/SSI/>

Table of Contents

Introduction.....	1
Summary	3

List of Charts

Disabled Recipients Who Work

1. SSI disabled recipients who work, December 1987–99	4
2. SSI disabled recipients who work, by state, September 2000.....	5
3. SSI disabled recipients who work, by age, September 2000	6
4. SSI disabled recipients who work, by diagnosis, September 2000	7
5. SSI disabled recipients who work, by monthly earnings, September 2000	8

Section 1619 Participants

6. Section 1619 participants, by state, September 2000	9
7. Section 1619 participants, by age, September 2000	10
8. Section 1619 participants by diagnosis, September 2000.....	11

Other Work Incentive Program Participants

9. SSI disabled recipients benefiting from specified work incentive provisions, by age, September 2000	12
10. SSI disabled recipients benefiting from specified work incentive provisions, by diagnosis, September 2000	13

List of Tables

Disabled Recipients Who Work

1. Number of SSI disabled recipients, and number and percentage distribution of disabled working recipients, for selected months, 1976–2000	14
2. Number of SSI disabled recipients, and number and percentage distribution of SSI disabled working recipients, by state, September 2000	15
3. Number of SSI disabled working recipients in section 1619 status, by state, September 2000	16
4. Number and percentage distribution of SSI disabled working recipients and average earnings, by selected characteristics, September 2000	17
5. Percentage distribution of SSI disabled recipients and disabled working recipients age 18–64, by diagnosis, September 2000	18
6. Number and percentage distribution of SSI disabled recipients age 18–64, with earnings, and in 1619(b) status, by age, September 2000	19
7. Number of SSI disabled recipients age 18–64, and number and percentage distribution of section 1619 participants, by state, September 2000.....	20
8. Number of SSI disabled recipients in June 2000, by program status and earnings in September 2000	21

Section 1619 Participants

9. Number of section 1619(a) and 1619(b) participants and percentage change from preceding period, for selected months, 1982–2000	22
10. Number and average earnings of section 1619(a) participants, by state, for selected months, 1999–2000	23
11. Number and average earnings of section 1619(b) participants, by state, for selected months, 1999–2000	24

12.	Number and average earnings of section 1619(a) and 1619(b) participants, by selected characteristics, September 2000	25
13.	Percentage distribution of SSI disabled recipients and section 1619(a) and 1619(b) participants age 18–64, by diagnosis, September 2000	26

Other Work Incentive Program Participants

14.	Number of SSI disabled recipients benefiting from specified work incentive provisions, by state, September 2000	27
15.	Number of SSI disabled recipients benefiting from specified work incentive provisions, by selected characteristics, September 2000	28
16.	Percentage distribution of SSI disabled recipients benefiting from specified work incentive provisions, by diagnosis, September 2000	29
17.	Percentage distribution of persons with income excluded under specified work incentive provisions, by amount excluded, September 2000	30

Introduction

This report provides information about Supplemental Security Income (SSI) disabled and blind¹ recipients who work and receive earnings. The report presents data on all SSI disabled recipients who work, section 1619 participants, and recipients who benefit from other work incentive provisions.

Since the beginning of the SSI program, a number of SSI disabled recipients have worked and received SSI payments. Initially, the program contained basic general and earned income exclusions that recognized the additional costs associated with employment. In computing the SSI payment, the first \$20 of income is not counted. In addition, the first \$65 of monthly earnings and one-half of the earnings in excess of \$65 are also excluded.

The law also contained a number of special income exclusions that were intended as work incentives:

- Blind Work Expenses (BWE) permit the exclusion of any earned income of a blind person that is used to meet any expenses reasonably attributable to earning the income.
- Plans for Achieving Self-Support (PASS) permit a recipient with an approved PASS to set aside earned or unearned income and resources for a work goal. The income or resources set aside are used to pay for goods or services needed to reach the goal, such as education, vocational training, starting a business, or purchasing work related equipment. The income and resources that are set aside under a PASS are excluded from SSI income and resource tests, but they do not influence the determination of ability to engage in substantial gainful activity (SGA).
- Student Child Earned Income Exclusions allow for the exclusion of certain earnings

of child recipients under age 22 who are students regularly attending school.

The 1980 amendments to the Social Security Act established section 1619, and provided additional work incentive provisions to assist SSI recipients in entering the workforce. These included income exclusions for impairment-related work expenses, a change in the treatment of sheltered workshop earnings, and the continuation of SSI payments for some individuals whose disability ceased due to medical recovery.

- Impairment Related Work Expenses (IRWE) exclude from earnings the costs of items and services needed to work because of the person's disability and are paid for by the individual. These expenses are excluded from earned income used to compute ongoing SSI monthly payments. Beginning December 1990, the IRWE exclusions are also applied in the determination of income for purposes of initial SSI eligibility. IRWE may also be deducted from earned income when determining SGA.
- A change in the treatment of sheltered workshop earnings provides that remuneration for services performed in sheltered workshops or activity centers is treated as earned income. This change makes it possible to apply the earned income exclusion to earnings that previously were subject to the general income exclusion; i.e., the first \$20 and a dollar-for-dollar offset thereafter.
- The continuation of payments provision allows for the continuation of SSI (also SSDI) payments to disabled individuals after their disability ceases due to medical recovery, if they are participating in approved vocational rehabilitation plans and SSA determines that completion of the program will increase the chances of permanent removal from the disability rolls.

¹ Unless specifically excluded and/or listed separately, all references to SSI disabled recipients and workers in this report include persons whose eligibility is based on blindness.

The provision assists individuals whose medical improvement occurs before completion of vocational training. This provision was extended to SSI recipients whose eligibility is based on blindness effective April 1988.

Congress enacted these provisions because it concluded that additional incentives were required to help SSI disabled recipients to become self-supporting. They believed that individuals who could work outside of sheltered workshops, might have been discouraged from doing so by the fear of losing their benefits before they had established for themselves the capability for continued self-support.

Section 1619(a) provides special SSI cash benefits to disabled individuals who lose eligibility for SSI payments because they have earnings at the level that is ordinarily considered to represent SGA. Section 1619(b) provides special SSI recipient status for Medicaid purposes to working disabled or blind individuals when their earnings make them ineligible for cash payments.

Under P.L. 99-643, which made section 1619 permanent, disabled individuals on the SSI rolls retain disability status until they medically improve. The distinction between a disabled person eligible for regular SSI benefits and a disabled person eligible for 1619(a) benefits is that the latter has several months with gross earnings above the SGA level.

Under previous law, 1619(a) status did not begin until after the completion of a trial work period and a determination was made that subsequent work was SGA. A number of cases were defined as 1619(a) after June 1987 as a result of this change in the definition, rather than from any change in their work activity.

Beginning January 1990, a number of recipients went from 1619(a) status to regular eligibility status as a result of the increase in the SGA level from \$300 to \$500. This also occurred effective July 1999, when the SGA level was further increased to \$700.

Under section 1619(b), cash payments are not made. However, recipient status for Medicaid purposes continues until earnings reach a plateau that takes into account the person's ability to afford medical care as well as his or her normal living expenses.

An individual may benefit from more than one of the work incentive provisions. For example, he or she may receive special cash payments under section 1619 and have income excluded under a PASS. Other combinations are also possible, but it is not possible to have both IRWE and BWE.

The data in this report are based on the SSI caseload at the end of September 2000.

In September 2000, there were 359,694 SSI disabled beneficiaries who were working (6.7 percent of the total SSI disabled caseload) (table 2). Included in this count were 84,199 section 1619(b) participants who do not receive an SSI payment, but who have special SSI recipient status for Medicaid purposes. Almost two-thirds (65.3 percent) of the workers had amounts of earned income below the substantial gainful activity (SGA) level of \$700 per month; 24.5 percent earned \$65 or less (table 4).

Geographic Distribution

Among the States, the percentage of disabled workers varied from a low of 3.1 percent in Alabama to a high of 19.8 percent in Iowa (table 2). In general, the percentage of disabled workers was higher in the Northern States than in the Southern States.

Demographic Characteristics

The majority of these disabled workers were male (53.5 percent). Almost half (46.6 percent) had unearned income; 39.8 percent were receiving Social Security benefits (table 4). Comparable figures for all disabled recipients in September 2000 were: 44.5 percent male, 37.8 percent with unearned income, and 30.6 percent receiving Social Security benefits.

Diagnosis

Disabled workers are more likely to have certain impairments than other disabled recipients. Almost three-fourths (72.3 percent) of the workers had a mental disorder, including 46.8 percent who were diagnosed with mental retardation (table 5). This compares to 58.4 percent of all disabled recipients with a mental disorder, including 24.5 percent with mental retardation.

Section 1619

The greatest use of work incentive provisions was by participants under section 1619—30.7 percent of disabled workers. This included 7.3 percent under section 1619(a), and 23.4 percent under section 1619(b) (table 3).

Other Work Incentives

Use of other work incentive provisions continued to have a smaller, but measurable, impact. In September 2000, 4.1 percent of the SSI disabled workers had some of their income excluded under one of these provisions—plan for achieving self support (PASS), (0.4 percent); impairment-related work expenses (IRWE), (2.6 percent), or blind work expenses (BWE), (1.1 percent) (table 15).

A PASS permits an SSI recipient to set aside income and resources to help obtain the training or education necessary for certain specified occupational goals. In September 2000, 425 PASS participants had earnings, which averaged \$655 per month (table 4). However, exclusions under a PASS are not limited to earnings. Of the 1,260 disabled recipients with a PASS, almost two-thirds (63.3 percent) did not have any earnings reported for September 2000 (table 15). For this group, the PASS excluded unearned income such as social security benefits. Out of all PASS participants, 167 had a PASS that excluded only resources.

**Chart 1.—SSI disabled recipients who work,
December 1987–99**

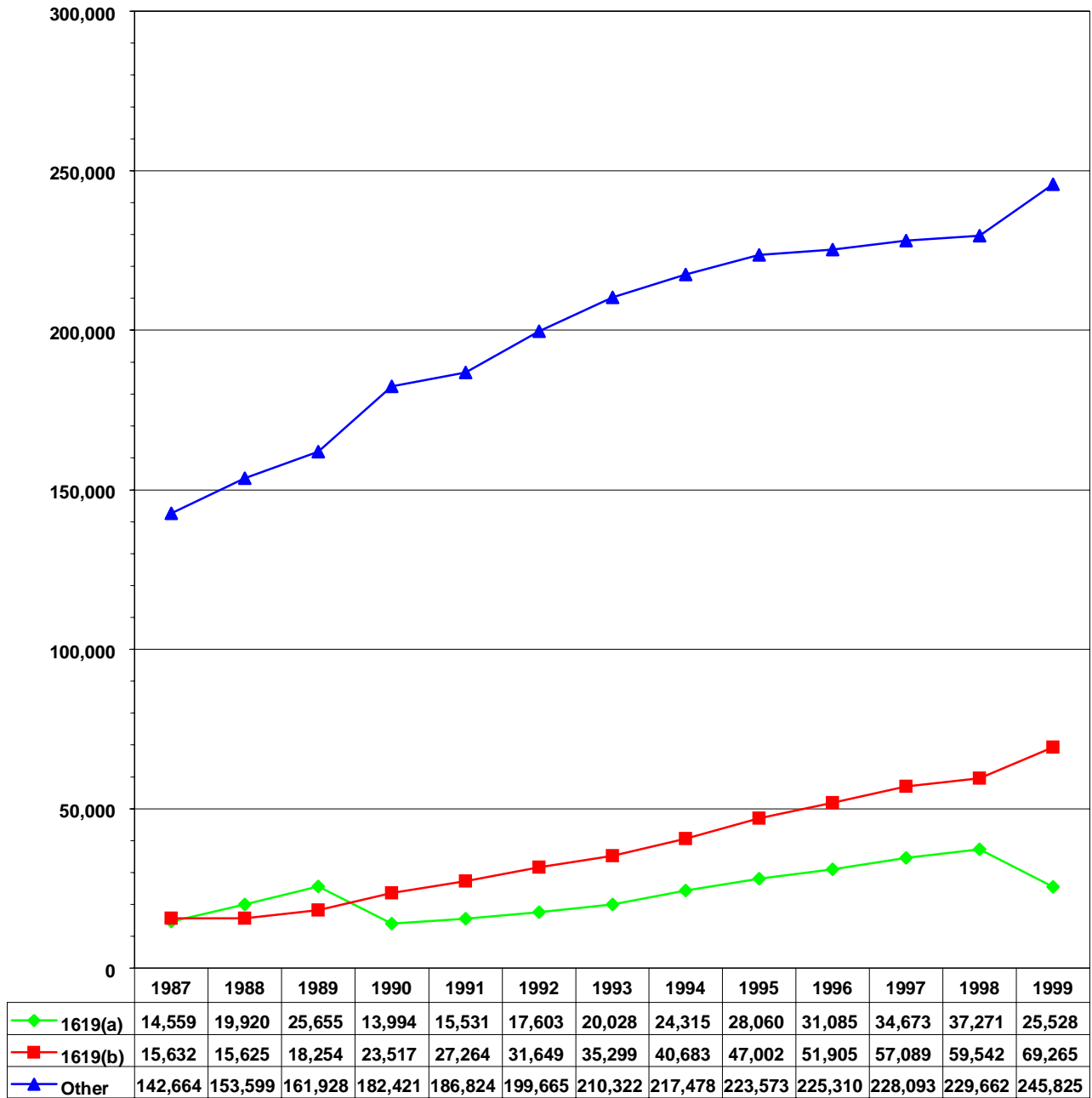
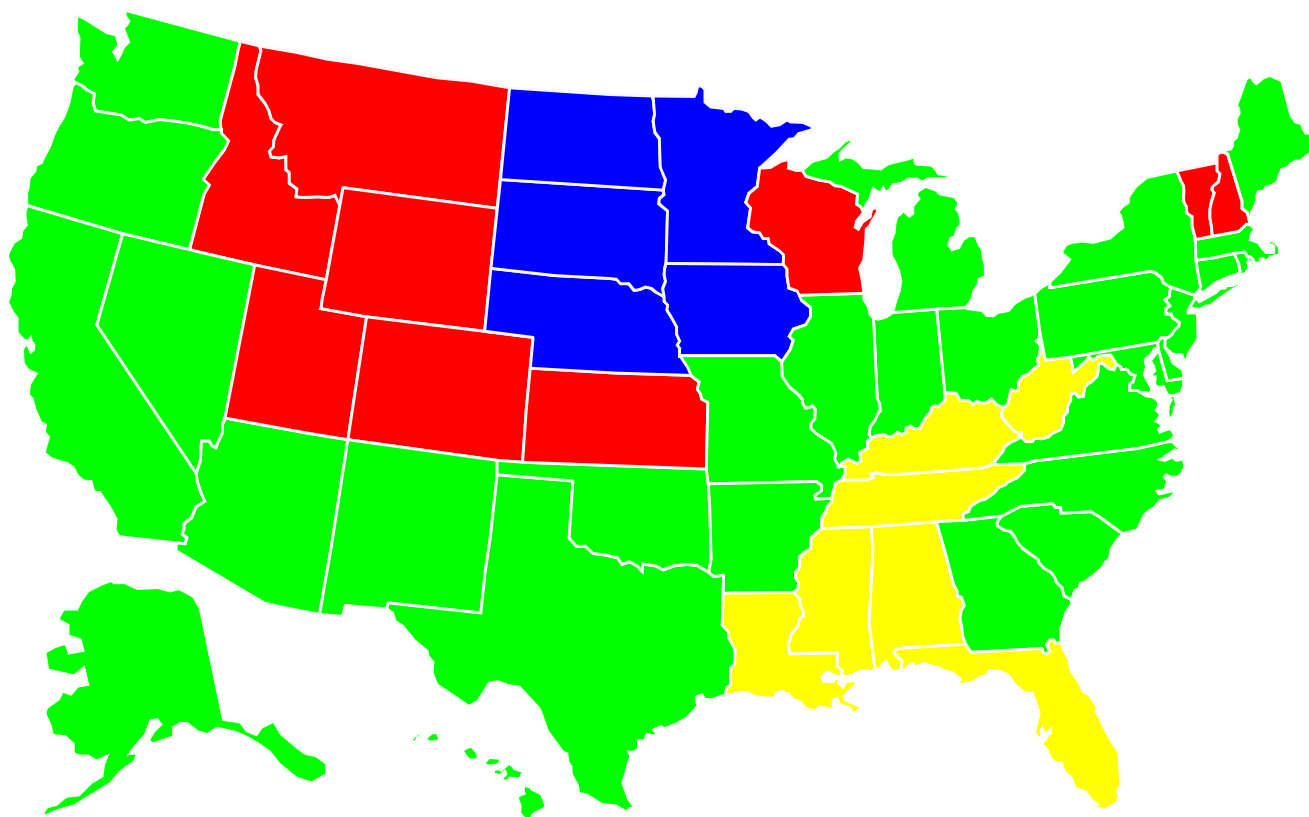
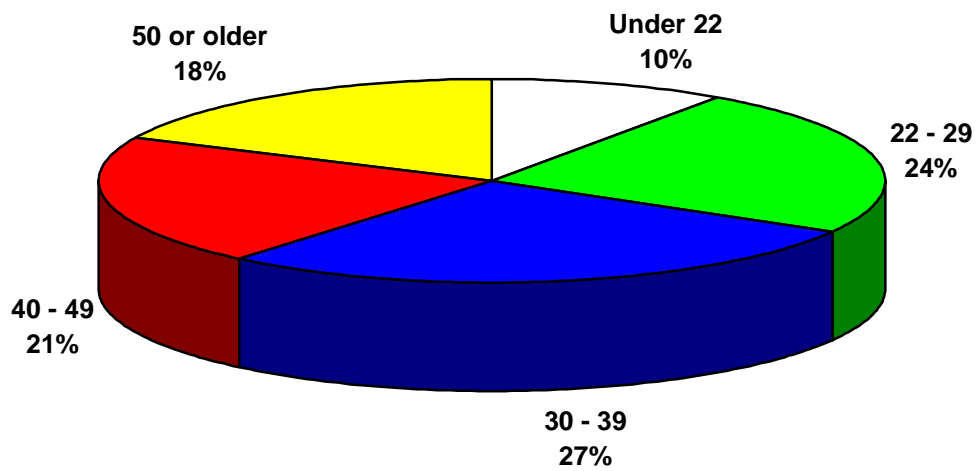


Chart 2.—SSI disabled recipients who work,
by state, September 2000

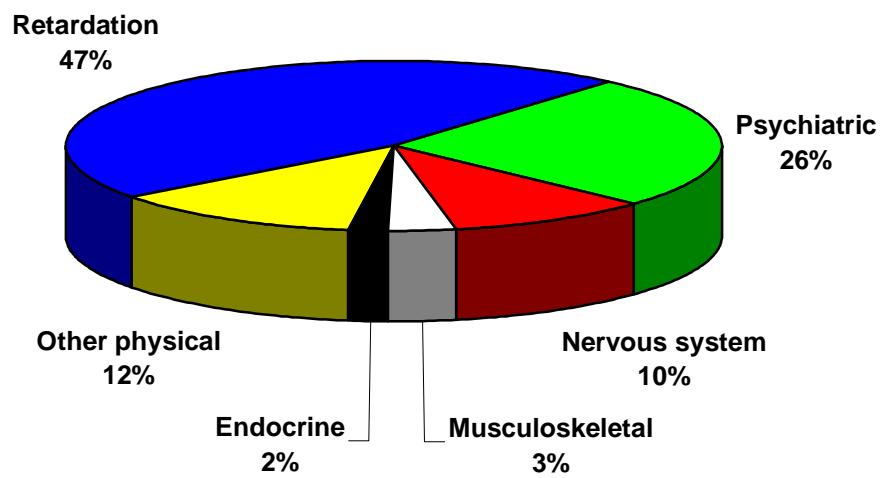


**Chart 3.—SSI disabled recipients who work,
by age, September 2000**



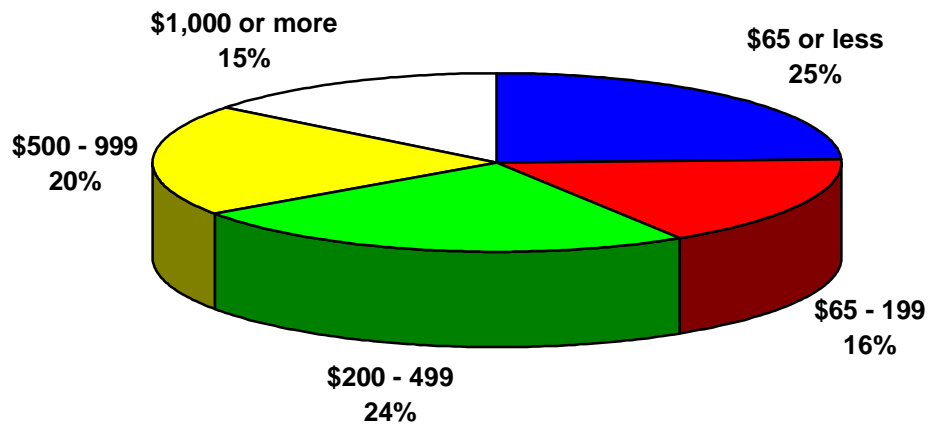
Data includes section 1619(b) participants.

**Chart 4.—SSI disabled recipients who work,
by diagnosis, September 2000**



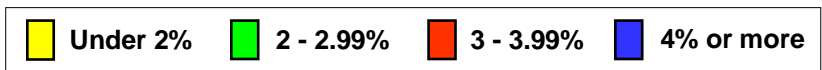
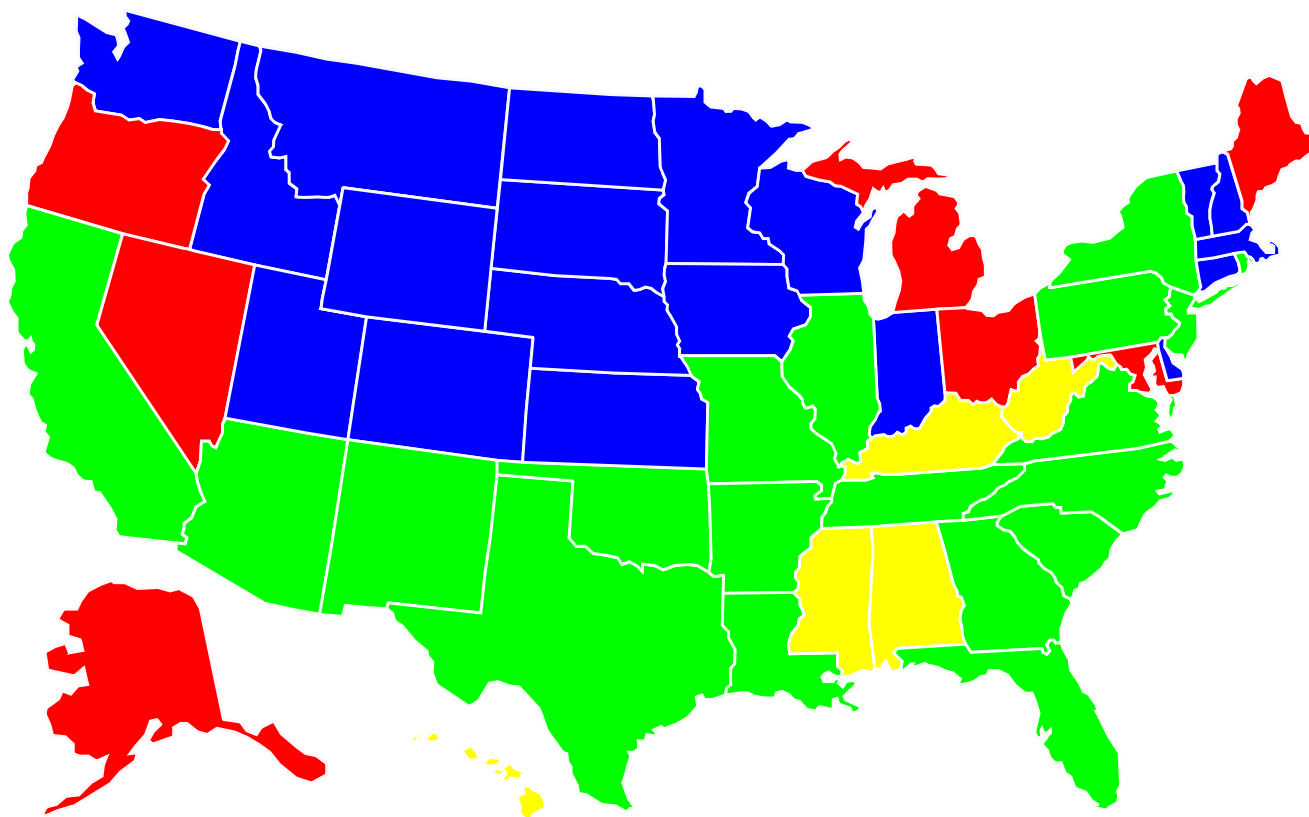
Data includes section 1619(b) participants.

**Chart 5.—SSI disabled recipients who work,
by monthly earnings, September 2000**



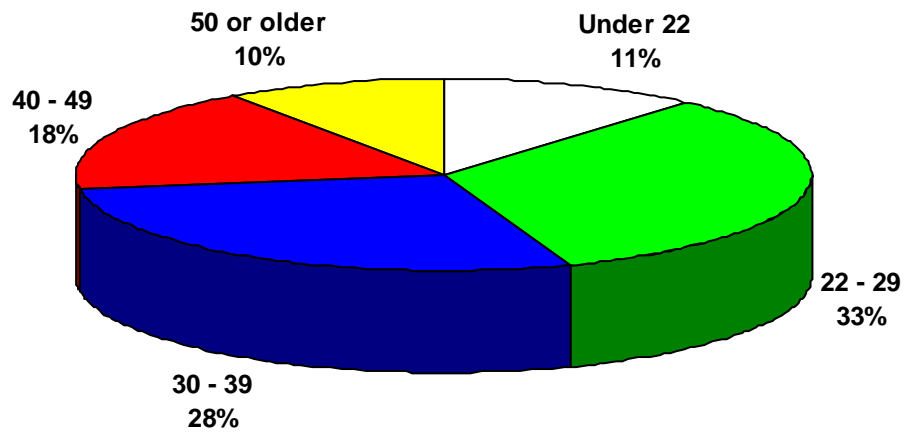
Data includes section 1619(b) participants.

Chart 6.—Section 1619 participants,
by state, September 2000

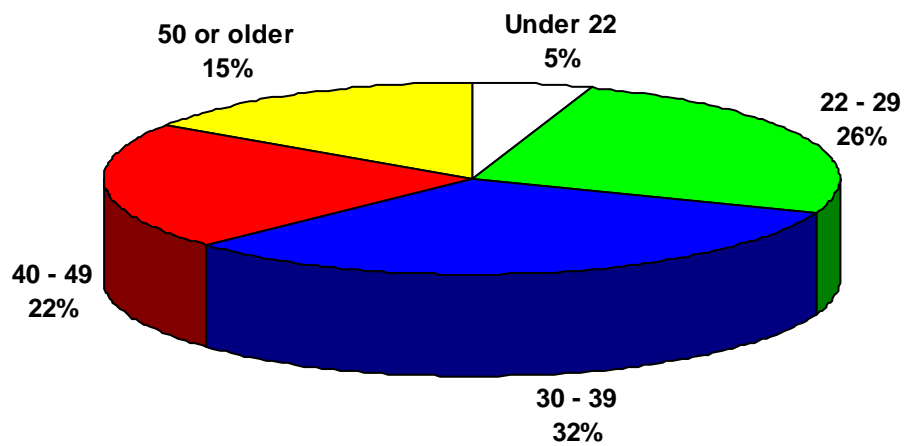


**Chart 7.—Section 1619 participants,
by age, September 2000**

1619(a) Participants

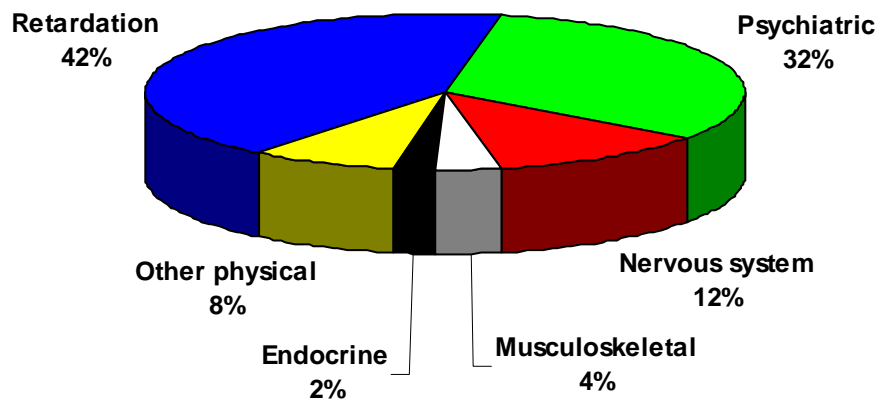


1619(b) Participants



**Chart 8.—Section 1619 participants,
by diagnosis, September 2000**

1619(a) Participants



1619(b) Participants

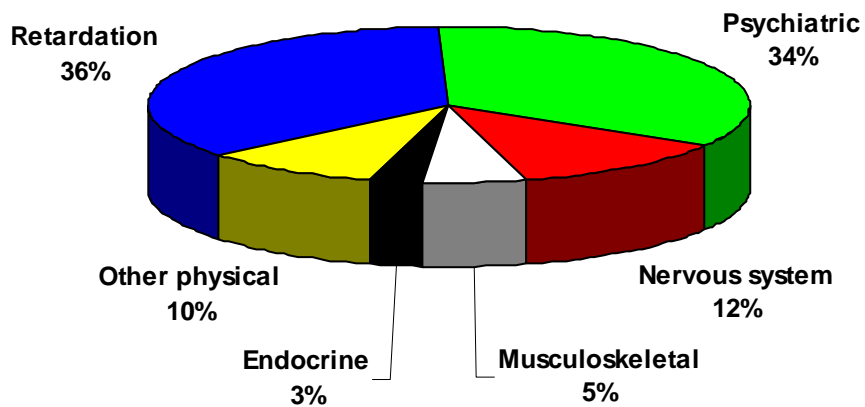
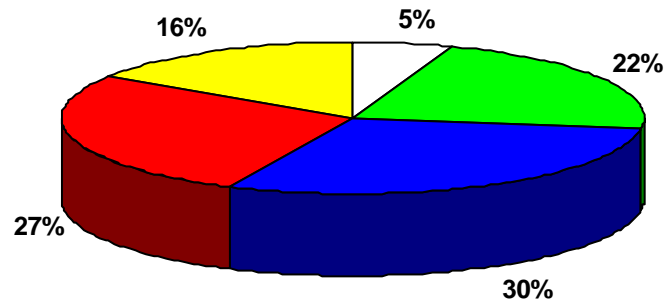
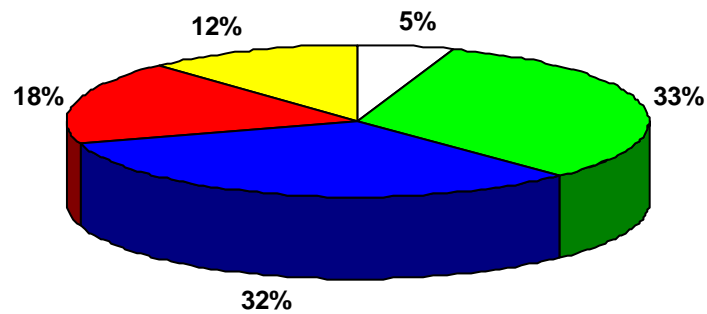


Chart 9—SSI disabled recipients benefiting from specified work incentive provisions, by age, September 2000

Recipients with PASS



Recipients with IRWE



Recipients with BWE

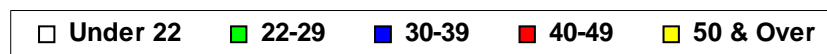
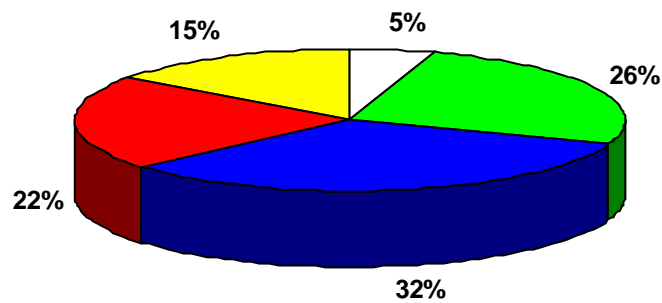
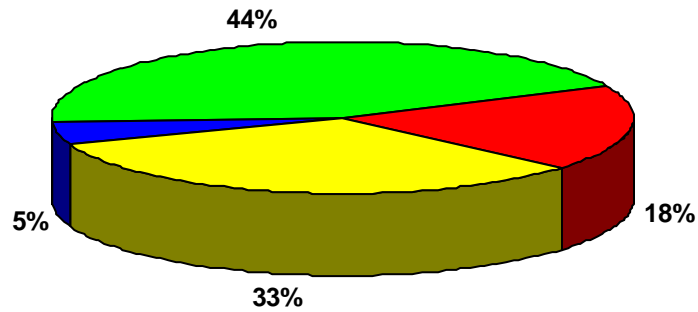
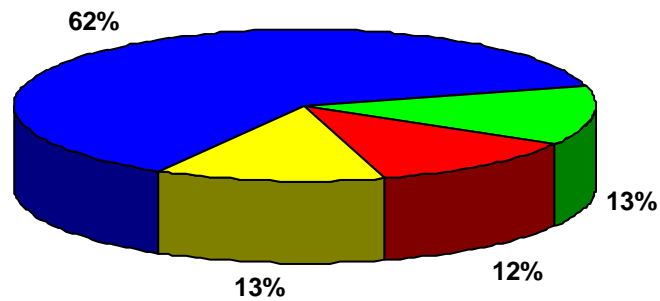


Chart 10—SSI disabled recipients benefiting from specified work incentive provisions, by diagnosis, September 2000

Recipients with PASS



Recipients with IRWE



Recipients with BWE

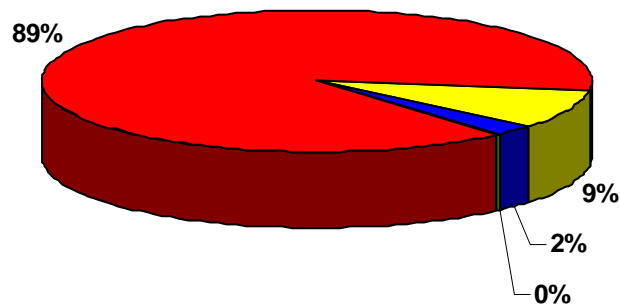


Table 1.—Number of SSI disabled recipients, and number and percentage distribution of disabled working recipients, for selected months, 1976–2000 ¹

At end of selected month	All disabled recipients ²	Disabled working recipients		
		Receiving payments ³	1619(b) participants	Percent of disabled recipients
December: ⁴				
1976	2,088,242	70,719	...	3.4
1977	2,186,771	83,697	...	3.8
1978	2,249,025	87,697	...	3.9
1979	2,277,859	92,270	...	4.1
1980	2,334,241	99,276	...	4.3
1981	2,340,785	102,632	...	4.4
1982	2,314,364	102,288	5,515	4.7
1983	2,391,262	108,734	5,165	4.8
1987	2,945,244	157,223	15,632	5.9
1988	3,046,074	173,519	15,625	6.2
1989	3,172,270	187,583	18,254	6.5
1990	3,386,603	196,415	23,517	6.5
1991	3,681,050	202,355	27,264	6.2
1992	4,126,816	217,268	31,649	6.0
1993	4,544,777	230,350	35,299	5.8
1994	4,870,564	241,793	40,683	5.8
1995	5,115,014	251,633	47,002	5.8
1996	5,252,991	256,395	51,905	5.9
1997	5,189,724	262,766	57,089	6.2
1998	5,293,829	266,933	59,542	6.2
1999	5,317,861	271,353	69,265	6.4
1998				
March	5,235,042	264,830	54,639	6.1
June.....	5,285,950	268,628	55,761	6.1
September.....	5,312,870	272,079	58,183	6.2
December.....	5,293,829	266,933	59,542	6.2
1999				
March	5,350,722	268,866	63,431	6.2
June.....	5,354,409	270,989	66,939	6.3
September.....	5,357,789	272,100	70,580	6.4
December.....	5,317,861	271,353	69,265	6.4
2000				
March	5,367,023	269,173	69,545	6.3
June.....	5,382,127	269,366	77,782	6.5
September.....	5,387,295	275,495	84,199	6.7

¹ Includes SSI blind recipients.

² Includes section 1619(b) participants.

³ Includes section 1619(a) participants and SSI recipients earning less than the Substantial Gainful Activity level, (\$700 effective July 1999).

⁴ Data not available for December 1984, 1985, and 1986.

Disabled Recipients Who Work

Table 2.—Number of SSI disabled recipients, and number and percentage distribution of SSI disabled working recipients, by state, September 2000 ¹

State	All disabled recipients	Disabled working recipients	
		Number	Percent
Total.....	5,387,295	359,694	6.7
Alabama	133,622	4,089	3.1
Alaska.....	7,271	606	8.3
Arizona	68,747	3,798	5.5
Arkansas	72,450	3,691	5.1
California	757,854	43,229	5.7
Colorado.....	46,336	4,930	10.6
Connecticut	42,583	4,157	9.8
Delaware	10,913	921	8.4
District of Columbia	17,778	775	4.4
Florida	283,539	12,308	4.3
Georgia.....	164,562	8,809	5.4
Hawaii.....	13,928	701	5.0
Idaho	16,892	1,820	10.8
Illinois	221,292	15,070	6.8
Indiana.....	82,821	6,767	8.2
Iowa.....	37,553	7,452	19.8
Kansas	33,530	4,332	12.9
Kentucky.....	156,355	5,327	3.4
Louisiana	142,816	5,715	4.0
Maine.....	26,920	2,395	8.9
Maryland.....	73,534	5,887	8.0
Massachusetts	125,258	11,319	9.0
Michigan	195,545	17,534	9.0
Minnesota	56,638	9,694	17.1
Mississippi.....	107,525	3,722	3.5
Missouri	100,726	7,836	7.8
Montana	12,868	1,792	13.9
Nebraska.....	19,479	3,208	16.5
Nevada.....	18,497	1,418	7.7
New Hampshire.....	11,003	1,417	12.9
New Jersey.....	113,980	8,164	7.2
New Mexico.....	38,002	2,055	5.4
New York	482,346	31,137	6.5
North Carolina	158,688	8,716	5.5
North Dakota	7,173	1,416	19.7
Ohio.....	227,688	19,076	8.4
Oklahoma	62,102	3,782	6.1
Oregon	45,512	4,391	9.6
Pennsylvania	249,322	16,367	6.6
Rhode Island	23,428	1,832	7.8
South Carolina.....	91,388	5,564	6.1
South Dakota.....	11,165	2,208	19.8
Tennessee.....	143,110	6,876	4.8
Texas.....	296,179	15,398	5.2
Utah.....	18,544	2,342	12.6
Vermont.....	11,351	1,192	10.5
Virginia	108,985	7,015	6.4
Washington	88,690	6,939	7.8
West Virginia	66,121	2,075	3.1
Wisconsin.....	78,797	11,630	14.8
Wyoming	5,378	780	14.5
Northern Mariana Islands	511	20	3.9

¹ Includes 1619(b) participants.

Disabled Recipients Who Work

Table 3.—Number of SSI disabled working recipients in section 1619 status, by state, September 2000

State	Total	Section 1619(a)	Section 1619(b)	Other disabled working recipients
Total.....	359,694	26,180	84,199	249,315
Alabama.....	4,089	346	962	2,781
Alaska.....	606	53	166	387
Arizona.....	3,798	301	1,014	2,483
Arkansas.....	3,691	248	872	2,571
California.....	43,229	4,197	7,170	31,862
Colorado.....	4,930	308	1,253	3,369
Connecticut.....	4,157	221	1,182	2,754
Delaware.....	921	77	305	539
District of Columbia.....	775	60	242	473
Florida.....	12,308	1,141	3,498	7,669
Georgia.....	8,809	599	2,001	6,209
Hawaii.....	701	42	128	531
Idaho.....	1,820	131	489	1,200
Illinois.....	15,070	1,176	3,603	10,291
Indiana.....	6,767	499	1,960	4,308
Iowa.....	7,452	356	1,751	5,345
Kansas.....	4,332	234	1,055	3,043
Kentucky.....	5,327	381	1,262	3,684
Louisiana.....	5,715	541	1,491	3,683
Maine.....	2,395	148	713	1,534
Maryland.....	5,887	386	1,380	4,121
Massachusetts.....	11,319	887	3,514	6,918
Michigan.....	17,534	1,192	4,414	11,928
Minnesota.....	9,694	469	2,598	6,627
Mississippi.....	3,722	333	1,070	2,319
Missouri.....	7,836	465	1,678	5,693
Montana.....	1,792	82	409	1,301
Nebraska.....	3,208	160	673	2,375
Nevada.....	1,418	99	355	964
New Hampshire.....	1,417	88	456	873
New Jersey.....	8,164	500	1,792	5,872
New Mexico.....	2,055	145	507	1,403
New York.....	31,137	2,278	5,936	22,923
North Carolina.....	8,716	509	2,046	6,161
North Dakota.....	1,416	45	300	1,071
Ohio.....	19,076	1,373	4,184	13,519
Oklahoma.....	3,782	206	727	2,849
Oregon.....	4,391	220	1,177	2,994
Pennsylvania.....	16,367	1,212	3,656	11,499
Rhode Island.....	1,832	101	423	1,308
South Carolina.....	5,564	351	1,123	4,090
South Dakota.....	2,208	78	519	1,611
Tennessee.....	6,876	508	1,751	4,617
Texas.....	15,398	1,144	3,915	10,339
Utah.....	2,342	162	478	1,702
Vermont.....	1,192	120	348	724
Virginia.....	7,015	536	1,721	4,758
Washington.....	6,939	650	2,198	4,091
West Virginia.....	2,075	147	484	1,444
Wisconsin.....	11,630	626	3,044	7,960
Wyoming.....	780	44	201	535
Northern Mariana Islands.....	20	5	5	10

Disabled Recipients Who Work

Table 4.—Number and percentage distribution of SSI disabled working recipients and average earnings, by selected characteristics, September 2000 ¹

Selected characteristics	Number	Percent	Average earnings
Total.....	359,694	100.0	\$472
Age:			
Under 18	4,402	1.2	473
18–21	30,181	8.4	468
22–29	85,733	23.8	563
30–39	99,783	27.7	487
40–49	74,400	20.7	453
50–59	40,932	11.4	394
60–64	11,962	3.3	334
65 or older	12,301	3.4	231
Sex:			
Male	192,326	53.5	486
Female	167,368	46.5	455
Earned income: ²			
Wages	342,349	95.2	485
Self-employment	18,784	5.2	263
Earning levels:			
\$65 or less	88,203	24.5	53
\$66–\$99	16,362	4.5	82
\$100–\$199	42,865	11.9	138
\$200–\$299	33,219	9.2	235
\$300–\$399	27,724	7.7	334
\$400–\$499	26,345	7.3	434
\$500–\$599	22,860	6.4	527
\$600–\$699	17,731	4.9	631
\$700–\$799	12,085	3.4	732
\$800–\$899	11,387	3.2	831
\$900–\$999	8,749	2.4	935
\$1,000 or more	52,164	14.5	1,524
Unearned income: ²			
None	192,002	53.4	549
Social Security	143,295	39.8	358
Other pensions	3,182	.9	305
Assistance based on need	101	.0	683
Interest, dividends, etc	25,799	7.2	407
Other	13,255	3.7	563
Work incentives: ²			
Section 1619(a)	26,180	7.3	932
Section 1619(b)	84,199	23.4	1,036
PASS ³	425	.1	655
IRWE	9,380	2.6	459
BWE	3,932	1.1	880

¹ Includes section 1619(b) participants.

² Persons with more than one type are shown under each type.

³ Number of working recipients with a PASS. See Tables 14–17 for data on all recipients with a PASS.

Table 5.—Percentage distribution of SSI disabled recipients and disabled working recipients age 18–64, by diagnosis, September 2000 ¹

Diagnosis	All disabled recipients	Disabled working recipients
Total number	3,690,970	342,991
Total percent ²	100.0	100.0
Infectious and parasitic diseases	2.2	1.2
Neoplasms	1.3	.8
Endocrine, nutritional, and metabolic	5.6	2.0
Mental disorders:		
Schizophrenia	10.9	9.3
Other psychiatric	23.0	16.2
Mental retardation	24.5	46.8
Diseases of the—		
Nervous system and sense organs ³	8.3	10.0
Circulatory system	5.7	1.5
Respiratory system	2.5	.8
Digestive system9	.4
Genitourinary system	1.2	.8
Musculoskeletal system and connective tissues	9.6	3.3
Congenital anomalies4	1.0
Injury and poisoning	2.9	1.7
Other9	4.3

¹ Information for all disabled recipients is based on universe counts for December 1999. Information for section 1619 participants is available from SSI source files.

² Includes only recipients whose diagnosis information is specifically identified in the source files.

³ Most disabled recipients classified as blind are included in this category. A few blind recipients with a primary impairment other than diseases of the eye are coded in other categories. Also, a few recipients are classified with diseases of the eye, but their impairment does not meet the definition of blindness.

Disabled Recipients Who Work

Table 6.—Number and percentage distribution of SSI disabled recipients age 18–64, with earnings, and in 1619(b) status, by age, September 2000

Age	All disabled recipients ¹		With earnings		In 1619(b) status	
	Number	Percent	Number	Percent	Number	Percent
Total.....	3,817,675	100.0	342,991	9.0	81,654	2.1
18–21	229,956	6.0	30,181	13.1	3,875	1.7
22–29	487,345	12.8	85,733	17.6	21,550	4.4
30–39	774,402	20.3	99,783	12.9	26,808	3.5
40–49	951,944	24.9	74,400	7.8	18,455	1.9
50–59	925,257	24.2	40,932	4.4	8,474	.9
60–64	448,771	11.8	11,962	2.7	2,492	.6

¹ Includes section 1619(b) participants.

Disabled Recipients Who Work

Table 7.—Number of SSI disabled recipients age 18–64, and number and percentage distribution of section 1619 participants, by state, September 2000

State ranking	State	All disabled recipients ¹	Section 1619 participants	
			Number	Percent
	Total	3,817,981	107,426	2.81
1	South Dakota	7,823	580	7.41
2	Iowa	28,715	2,066	7.19
3	Minnesota	42,869	3,020	7.04
4	Wisconsin	56,750	3,600	6.34
5	North Dakota	5,347	339	6.34
6	New Hampshire	8,537	526	6.16
7	Wyoming	4,109	241	5.87
8	Nebraska	14,349	812	5.66
9	Vermont	8,715	462	5.30
10	Kansas	24,485	1,256	5.13
11	Delaware	7,274	371	5.10
12	Idaho	12,576	611	4.86
13	Montana	9,910	472	4.76
14	Utah	13,686	630	4.60
15	Colorado	34,540	1,523	4.41
16	Connecticut	32,086	1,378	4.29
17	Washington	67,835	2,787	4.11
18	Massachusetts	105,867	4,291	4.05
19	Indiana	59,843	2,404	4.02
20	Maine	21,274	837	3.93
21	Oregon	34,729	1,363	3.92
22	Michigan	143,265	5,474	3.82
23	Alaska	5,723	216	3.77
24	Maryland	51,171	1,710	3.34
25	Ohio	167,411	5,420	3.24
26	Northern Mariana Islands	311	10	3.22
27	Nevada	14,385	441	3.07
28	Rhode Island	17,236	511	2.96
29	Illinois	157,495	4,653	2.95
30	Virginia	74,995	2,208	2.94
31	New Jersey	78,521	2,241	2.85
32	Missouri	73,945	2,080	2.81
33	Arizona	48,026	1,274	2.65
34	Pennsylvania	180,984	4,739	2.62
35	Florida	181,299	4,486	2.47
36	Texas	201,828	4,901	2.43
37	New Mexico	26,330	636	2.42
38	District of Columbia	12,102	289	2.39
39	New York	336,734	8,030	2.38
40	South Carolina	60,946	1,434	2.35
41	North Carolina	105,060	2,467	2.35
42	Arkansas	48,032	1,079	2.25
43	Georgia	112,642	2,516	2.23
44	Tennessee	102,312	2,185	2.14
45	Oklahoma	43,702	902	2.06
46	Louisiana	96,338	1,986	2.06
47	California	535,130	10,953	2.05
48	Mississippi	71,930	1,366	1.90
49	Hawaii	10,929	165	1.51
50	Kentucky	115,068	1,599	1.39
51	Alabama	91,281	1,267	1.39
52	West Virginia	51,225	619	1.21

¹ Includes section 1619(b) participants.

Table 8.—Number of SSI disabled recipients in June 2000, by program status and earnings in September 2000 ¹

Program status in June 2000	Total	Program status in September 2000								
		Receiving payments			Not receiving payments					
		Section 1619(a)	Have earnings	No earnings	Ineligible because of earned income			Other excess income	Other non-pay	
					Section 1619(b)	No longer eligible				
				Does not need/use Medicaid		Can pay for equivalent coverage	Both reasons			
Total.....	5,269,570	25,530	235,930	4,758,600	83,310	370	60	320	46,080	119,370
Receiving payments:										
Section 1619(a).....	25,690	17,090	1,820	3,270	2,120	30	0	20	280	1,060
Have earnings.....	241,380	3,120	211,000	16,230	5,040	30	20	20	2,010	3,910
No earnings.....	4,924,980	4,200	20,440	4,733,260	11,870	120	20	120	42,010	112,940
Not receiving payments:										
Section 1619(b).....	77,520	1,120	2,670	5,840	64,280	190	20	160	1,780	1,460

¹ Based on 10-percent sample files.

Section 1619 Participants

Table 9.—Number of section 1619(a) and 1619(b) participants and percentage change from preceding period, for selected months, 1982–2000

At end of selected month	1619(a) participants		1619(b) participants ¹	
	Number	Percentage change	Number	Percentage change
December: ²				
1982	287	...	5,515	...
1983	392	...	5,165	...
1987	14,559	...	15,632	...
1988	19,920	36.8	15,625	.0
1989	25,655	28.8	18,254	16.8
1990	13,994	-45.5	23,517	28.8
1991	15,531	11.0	27,264	15.9
1992	17,603	13.3	31,649	16.1
1993	20,028	13.8	35,299	11.5
1994	24,315	21.4	40,683	15.3
1995	28,060	15.4	47,002	15.5
1996	31,085	10.8	51,905	10.4
1997	34,673	11.5	57,089	10.0
1998	37,271	7.5	59,542	4.3
1999	25,528	-31.5	69,265	16.3
1998				
March	34,637	-1	54,639	-4.3
June.....	35,528	2.6	55,761	2.1
September.....	37,216	4.8	58,183	4.3
December.....	37,271	.1	59,542	2.3
1999				
March	39,457	5.9	63,431	6.5
June.....	23,304	-40.9	66,939	5.5
September.....	23,914	2.6	70,580	5.4
December.....	25,528	6.7	69,265	-1.9
2000				
March	25,055	-1.9	69,545	.4
June.....	25,837	3.1	77,782	11.8
September.....	26,180	1.3	84,199	8.2

¹ Includes blind participants. For September 2000, of the 84,199 participants, 1,474 were blind.

² Data not available for December 1984, 1985, and 1986.

NOTE: In January 1990, the Substantial Gainful Activity (SGA) level was raised from \$300 to \$500 and section 1619(a) participants with earnings below \$500 became eligible for regular SSI benefits rather than the special cash payments under section 1619(a). This is reflected in the decrease shown for 1990. In July 1999, the SGA level was increased to \$700, resulting in the decrease shown for June 1999.

Section 1619 Participants

Table 10.—Number and average earnings of section 1619(a) participants, by state, for selected months, 1999–2000

State	September 1999		June 2000		September 2000	
	Number	Average earnings	Number	Average earnings	Number	Average earnings
Total.....	23,914	\$918	25,837	\$933	26,180	\$932
Alabama	331	895	355	908	346	896
Alaska.....	40	926	45	911	53	916
Arizona	267	887	314	909	301	917
Arkansas	210	878	232	908	248	903
California	3,801	1,003	4,050	1,025	4,197	1,022
Colorado.....	305	897	312	902	308	905
Connecticut	214	872	223	886	221	882
Delaware	56	904	82	906	77	940
District of Columbia	63	877	59	908	60	918
Florida	948	889	1,078	905	1,141	896
Georgia.....	548	885	620	891	599	894
Hawaii.....	39	919	42	918	42	880
Idaho	108	889	120	918	131	906
Illinois	1,043	889	1,147	915	1,176	915
Indiana.....	458	904	500	916	499	917
Iowa.....	326	886	339	910	356	920
Kansas	266	900	241	913	234	912
Kentucky.....	386	913	399	924	381	917
Louisiana	533	888	530	903	541	896
Maine.....	119	908	126	946	148	933
Maryland.....	352	880	400	905	386	905
Massachusetts	886	934	931	955	887	948
Michigan	1,124	907	1,187	922	1,192	927
Minnesota	417	884	448	897	469	900
Mississippi.....	294	894	342	906	333	906
Missouri	374	899	431	917	465	908
Montana	69	905	83	887	82	900
Nebraska.....	163	890	165	907	160	917
Nevada.....	83	885	93	918	99	899
New Hampshire	74	900	82	913	88	921
New Jersey.....	432	918	449	910	500	918
New Mexico.....	139	879	142	894	145	885
New York	1,935	929	2,161	945	2,278	942
North Carolina	450	881	521	898	509	915
North Dakota	44	851	52	905	45	894
Ohio.....	1,308	892	1,431	907	1,373	904
Oklahoma	168	890	220	904	206	904
Oregon	183	888	206	917	220	913
Pennsylvania	1,079	911	1,201	920	1,212	926
Rhode Island	105	937	107	943	101	951
South Carolina.....	301	889	361	907	351	903
South Dakota.....	86	895	79	899	78	909
Tennessee.....	488	896	497	905	508	911
Texas.....	1,086	893	1,132	901	1,144	899
Utah.....	151	886	161	899	162	899
Vermont.....	114	962	111	974	120	983
Virginia	450	900	512	916	536	911
Washington	626	917	680	925	650	929
West Virginia	145	910	146	918	147	929
Wisconsin.....	674	908	645	914	626	913
Wyoming	52	884	43	908	44	915
Northern Mariana Islands	1	1,029	4	870	5	881

Section 1619 Participants

Table 11.—Number and average earnings of section 1619(b) participants, by state, for selected months, 1999–2000

State	September 1999		June 2000		September 2000	
	Number	Average earnings	Number	Average earnings	Number	Average earnings
Total.....	70,580	\$1,002	77,782	\$1,014	84,199	\$1,036
Alabama.....	907	1,109	922	1,092	962	1,167
Alaska ¹	134	1,001	135	1,047	166	1,057
Arizona.....	883	1,036	924	1,036	1,014	1,093
Arkansas.....	701	938	798	958	872	972
California.....	5,835	1,249	6,588	1,255	7,170	1,287
Colorado.....	1,063	994	1,175	1,030	1,253	1,036
Connecticut ¹	947	908	1,089	879	1,182	915
Delaware.....	266	1,051	269	1,054	305	1,080
District of Columbia.....	185	1,143	203	1,172	242	1,252
Florida.....	2,809	1,054	3,149	1,009	3,498	1,042
Georgia.....	1,573	992	1,826	1,004	2,001	1,014
Hawaii ¹	92	857	112	878	128	956
Idaho ¹	391	844	427	899	489	871
Illinois ¹	2,880	1,024	3,205	1,046	3,603	1,079
Indiana ¹	1,704	918	1,799	910	1,960	934
Iowa.....	1,648	787	1,717	777	1,751	772
Kansas ¹	1,009	893	1,030	921	1,055	907
Kentucky.....	1,166	1,102	1,188	1,152	1,262	1,194
Louisiana.....	1,280	950	1,325	927	1,491	965
Maine.....	514	868	615	884	713	945
Maryland.....	1,059	1,039	1,219	1,054	1,380	1,079
Massachusetts.....	3,046	1,076	3,348	1,087	3,514	1,110
Michigan.....	3,625	994	4,047	1,024	4,414	1,038
Minnesota ¹	2,146	867	2,417	883	2,598	906
Mississippi.....	791	1,147	932	1,149	1,070	1,147
Missouri ¹	1,477	861	1,691	840	1,678	842
Montana.....	335	752	372	748	409	787
Nebraska ¹	622	822	664	861	673	872
Nevada ¹	244	1,001	302	1,005	355	1,082
New Hampshire ¹	370	841	426	966	456	946
New Jersey.....	1,490	1,167	1,666	1,115	1,792	1,113
New Mexico.....	398	910	441	928	507	965
New York.....	5,053	1,110	5,485	1,150	5,936	1,176
North Carolina.....	1,734	965	1,853	977	2,046	994
North Dakota ¹	277	849	282	779	300	787
Ohio ¹	3,532	964	3,917	1,031	4,184	1,022
Oklahoma ¹	555	829	662	846	727	877
Oregon ¹	975	852	1,073	865	1,177	888
Pennsylvania.....	3,012	940	3,331	928	3,656	960
Rhode Island.....	345	1,033	400	1,076	423	1,032
South Carolina.....	932	976	1,030	967	1,123	972
South Dakota.....	472	774	511	796	519	809
Tennessee.....	1,489	1,073	1,652	1,109	1,751	1,117
Texas.....	3,392	960	3,591	951	3,915	970
Utah ¹	428	849	437	860	478	874
Vermont.....	293	829	332	873	348	893
Virginia ¹	1,334	904	1,530	954	1,721	954
Washington.....	1,826	1,014	2,048	1,041	2,198	1,085
West Virginia.....	390	1,116	453	1,152	484	1,213
Wisconsin.....	2,754	898	2,970	892	3,044	905
Wyoming.....	190	769	198	746	201	720
Northern Mariana Islands.....	7	875	6	804	5	920

¹ The Social Security Administration identifies persons as potential participants, final Medicaid determinations are made by the state.

Section 1619 Participants

Table 12.—Number and average earnings of section 1619(a) and 1619(b) participants, by selected characteristics, September 2000

Selected characteristics	1619(a) participants		1619(b) participants	
	Number	Average earnings	Number	Average earnings
Total.....	26,180	\$932	84,199	\$1,036
Age:				
Under 18	299	867	509	(1)
18–21	2,648	895	3,875	1,133
22–29	8,655	925	21,550	1,158
30–39	7,372	945	26,808	1,000
40–49	4,645	943	18,455	992
50–59	2,062	948	8,474	985
60–64	390	946	2,492	858
65 or older	109	930	2,036	780
Sex:				
Male	14,608	939	45,930	1,064
Female	11,572	924	38,269	1,002
Earned income: ²				
Wages	25,813	933	82,535	1,039
Self-employment	527	904	2,315	1,003
Earning levels:				
Less than \$400.....	11,867	269
\$400–\$499	7,587	437
\$500–\$599	7,893	527
\$600–\$699	6,511	631
\$700–\$899	11,724	795	8,216	779
\$900–\$1,199	12,688	1,002	10,517	1,042
\$1,200 or more	1,768	1,342	31,608	1,742
Unearned income: ²				
None.....	23,279	936	30,657	1,503
Social security	788	852	49,138	712
Other pensions.....	43	890	647	881
Assistance based on need.....	1	810	27	1,371
Interest, dividends, etc	1,539	932	5,451	917
Other	661	882	3,907	1,114
Work incentives: ²				
PASS ³	150	1,217	0	0
IRWE	941	962	1,786	902
BWE	7	1,675	814	1,265

¹ Data not available.

² Persons with more than one type are shown under each type.

³ Includes 10 persons with PASS plans that exclude only resources.

Section 1619 Participants

Table 13.—Percentage distribution of SSI disabled recipients and section 1619(a) and 1619(b) participants age 18–64, by diagnosis, September 2000 ¹

Diagnosis	All disabled recipients	1619(a) participants	1619(b) participants
Total number	3,690,970	25,772	81,654
Total percent ²	100.0	100.0	100.0
Infectious and parasitic diseases	2.2	1.5	2.2
Neoplasms	1.3	1.0	1.3
Endocrine, nutritional, and metabolic	5.6	2.4	2.9
Mental disorders:			
Schizophrenia	10.9	10.0	11.4
Other psychiatric	23.0	21.9	23.0
Mental retardation	24.5	42.6	35.5
Diseases of the—			
Nervous system and sense organs ³	8.3	11.8	12.1
Circulatory system	5.7	1.6	2.1
Respiratory system	2.5	1.0	1.1
Digestive system9	.4	.6
Genitourinary system	1.2	1.2	1.6
Musculoskeletal system and connective tissues	9.6	3.6	5.3
Congenital anomalies4	1.0	.8
Injury and poisoning	2.9	2.2	2.9
Other9	2.2	2.1

¹ Information for all disabled recipients is based on universe counts for December 1999. Information for section 1619 participants is available from SSI source files.

² Includes only recipients whose diagnosis information is specifically identified in the source files.

³ Most disabled recipients classified as blind are included in this category. A few blind recipients with a primary impairment other than diseases of the eye are coded in other categories. Also, a few recipients are classified with diseases of the eye, but their impairment does not meet the definition of blindness.

Other Work Incentive Participants

Table 14.—Number of SSI disabled recipients benefiting from specified work incentive provisions, by state, September 2000

State	Plans for achieving self-support (PASS) ¹	Impairment-related work expenses (IRWE)	Blind work expenses (BWE)
Total.....	1,260	9,380	3,933
Alabama	22	219	41
Alaska	2	10	2
Arizona	10	103	34
Arkansas	8	107	53
California	296	787	540
Colorado.....	14	47	45
Connecticut	7	150	40
Delaware.....	0	38	9
District of Columbia	3	4	8
Florida	45	484	127
Georgia.....	22	425	85
Hawaii.....	3	18	13
Idaho	4	12	6
Illinois	5	341	100
Indiana.....	1	175	77
Iowa.....	33	61	101
Kansas	19	308	37
Kentucky.....	29	120	56
Louisiana.....	6	143	58
Maine.....	25	53	32
Maryland.....	22	289	50
Massachusetts	52	267	288
Michigan.....	60	342	129
Minnesota.....	68	172	89
Mississippi.....	6	58	77
Missouri.....	24	215	64
Montana	13	15	11
Nebraska.....	17	58	18
Nevada.....	6	25	25
New Hampshire.....	7	32	5
New Jersey.....	28	225	73
New Mexico.....	3	120	19
New York	98	775	301
North Carolina	29	391	129
North Dakota	1	4	2
Ohio.....	45	171	167
Oklahoma.....	1	96	20
Oregon	8	39	59
Pennsylvania.....	23	499	195
Rhode Island.....	4	18	15
South Carolina.....	10	110	66
South Dakota.....	5	29	3
Tennessee.....	14	232	75
Texas.....	29	363	245
Utah.....	4	80	14
Vermont.....	15	6	7
Virginia.....	18	593	111
Washington.....	12	120	64
West Virginia.....	5	28	27
Wisconsin.....	78	398	117
Wyoming.....	1	5	4
Northern Mariana Islands.....	0	0	0

¹ Includes 167 persons with a PASS that excludes only resources.

Other Work Incentive Participants

Table 15.—Number of SSI disabled recipients benefiting from specified work incentive provisions, by selected characteristics, September 2000

Selected characteristics	Plans for achieving self-support (PASS) ¹	Impairment-related work expenses (IRWE)	Blind work expenses (BWE)
Total.....	1,260	9,380	3,933
Age:			
Under 18	3	11	4
18–21	66	494	195
22–29	275	3,030	1,008
30–39	374	3,037	1,294
40–49	344	1,686	847
50–59	172	768	410
60–64	22	208	94
65 or older	4	146	81
Sex:			
Male	560	5,049	2,183
Female	700	4,331	1,750
Earned income: ²			
Wages	406	9,317	3,815
Self-employment	62	96	150
Earning levels:			
\$65 or less	798	0	1
\$66–\$99	29	912	255
\$100–\$199	8	469	99
\$200–\$299	29	1,491	334
\$300–\$399	46	1,260	296
\$400–\$499	48	1,059	257
\$500–\$599	49	975	256
\$600–\$699	48	796	238
\$700–\$799	41	590	184
\$800–\$899	34	376	191
\$900–\$999	38	536	407
\$1,000 or more	92	916	1,415
Unearned income: ²			
None	263	4,506	2,118
Social Security	934	4,220	1,523
Other pensions	14	79	18
Assistance based on need	0	1	1
Interest, dividends, etc	95	838	327
Other	62	268	162

¹ Includes 167 persons with a PASS that excludes only resources.

² Persons with more than one type are shown under each type.

Other Work Incentive Participants

Table 16.—Percentage distribution of SSI disabled recipients benefiting from specified work incentive provisions, by diagnosis, September 2000

Diagnosis	Plans for achieving self-support (PASS) ¹	Impairment-related work expenses (IRWE)	Blind work expenses (BWE)
Total number	1,260	9,380	3,933
Total percent ²	100.0	100.0	100.0
Infectious and parasitic diseases	1.6	.7	.2
Neoplasms	1.2	.4	.3
Endocrine, nutritional, and metabolic	2.8	.5	.8
Mental disorders:			
Schizophrenia	11.3	4.5	.0
Other psychiatric	32.5	8.1	.3
Mental retardation	4.7	62.6	2.2
Diseases of the—			
Nervous system and sense organs ³	18.4	12.0	88.1
Circulatory system	2.6	.9	1.1
Respiratory system9	.2	.0
Digestive system9	.1	.0
Genitourinary system	1.6	.3	.1
Musculoskeletal system and connective tissues	7.4	.9	.1
Congenital anomalies8	2.0	1.7
Injury and poisoning	12.0	2.3	.2
Other	1.1	4.5	4.8

¹ Includes 167 persons with a PASS that excludes only resources.

² Includes only recipients whose diagnosis information is specifically identified on the source files.

³ Most disabled recipients classified as blind are included in this category. A few blind recipients with a primary impairment other than diseases of the eye are coded in other categories. Also, a few recipients are classified with diseases of the eye, but their impairment does not meet the definition of blindness.

Other Work Incentive Participants

Table 17.—Percentage distribution of persons with income excluded under specified work incentive provisions, by amount excluded, September 2000

Amount excluded	Plans for achieving self-support (PASS) ¹	Impairment-related work expenses (IRWE)	Blind work expenses (BWE)
Total number	1,093	9,380	3,933
Total percent.....	100.0	100.0	100.0
Under \$25.....	.8	20.8	15.4
\$25–\$49	1.0	26.8	9.9
\$50–\$99	3.4	31.0	16.1
\$100–\$199	10.3	14.2	17.3
\$200–\$299	15.1	3.8	13.0
\$300–\$499	32.9	2.2	15.4
\$500–\$999	32.3	.9	10.4
\$1,000 or more	4.1	.2	2.6

¹ Data does not include PASS that exclude only resources.