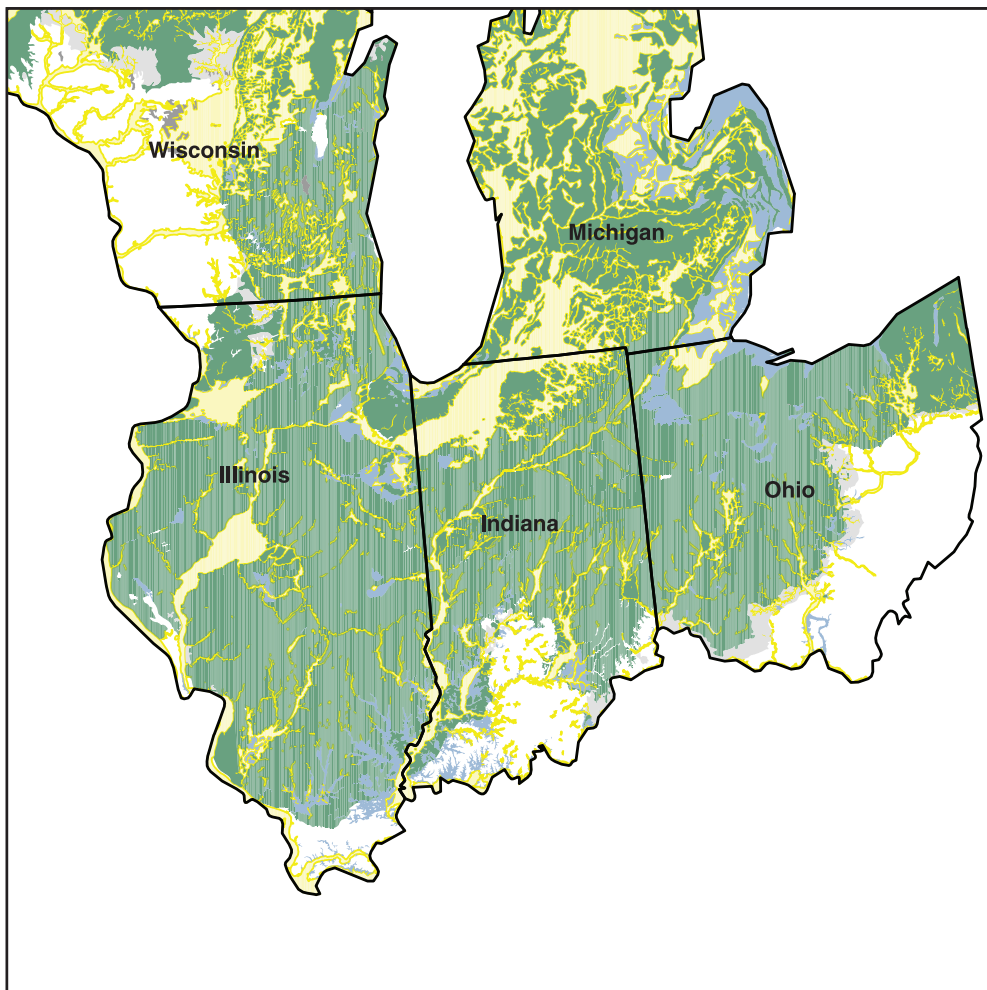


National Water-Quality Assessment

**Arsenic in Midwestern Glacial Deposits—
Occurrence and Relation to Selected
Hydrogeologic and Geochemical Factors**



Water-Resources Investigations Report 03-4228

Mary Ann Thomas–Arsenic in Midwestern Glacial Deposits–Occurrence and Relation to Selected Hydrogeologic and Geochemical Factors
Water-Resources Investigations Report 03-4228