

NUMBER OF EMPLOYEES BY COUNTY

Rio Arriba	Bernalillo
Lab: 1574	Lab: 141
JCNNM: 567	JCNNM: 103
PTLA: 211	PTLA: 22
Taos	Sandoval
Lab: 56	Lab: 253
JCNNM: 71	JCNNM: 46
PTLA: 18	PTLA: 23
Santa Fe	All Others
Lab: 1814	Lab: 75
JCNNM: 274	JCNNM: 49
PTLA: 115	PTLA: 10

Los Alamos

Lab: 4,643
JCNNM: 169
PTLA: 103

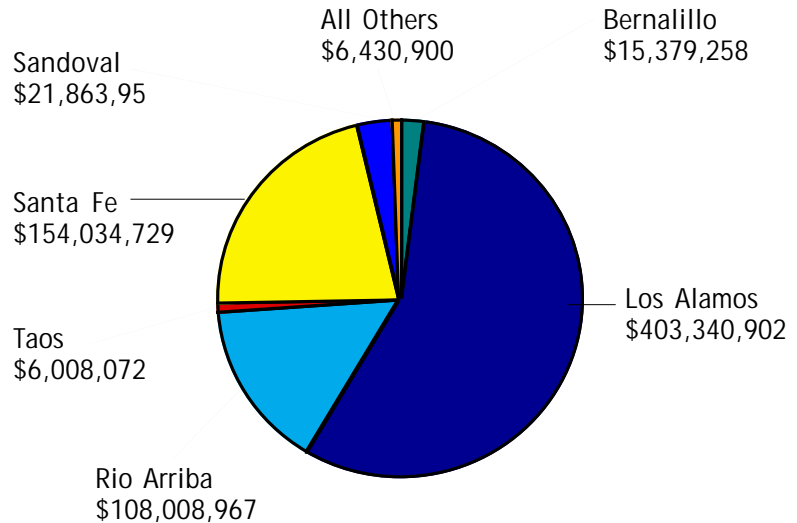
Totals 10,337 Employees:

Rio Arriba	2352	22.75%
Taos	145	1.4%
Santa Fe	2203	21.3%
Los Alamos	4915	47.55%
Bernalillo	266	2.6%
Sandoval	322	3.1%
All Others	134	1.3%

PERSONNEL (12-month average)

	HEADCOUNT	SALARY/BENEFITS
Lab (non-student)	7,629	\$679.6 Million
Lab (students)	1,264	\$22.4 Million
Consultants	1,048	\$4.5 Million
Special Program Guests	445	\$1.7 Million
Johnson Controls Northern New Mexico	1,448	\$66.5 Million
Protection Technology	493	\$34.8 Million
Contract Labor (Butler, Comforce, Plus, Weirich Inc.)	1,243	\$70.6 Million
TOTAL WORKFORCE	13,570	\$880 Million

SALARY BY COUNTY



Los Alamos Employee's Scholarship Fund

\$ Pledged by LANL/ Contractor Employees

Year	Amount
1998	\$78,871
1999	\$122,499
2000	\$101,831
2001	\$121,260
Total*	\$424,461

*including endowments, matching \$

2001



Scholarship Type

Platinum - \$40,000 (\$10,000 for four years)
Gold - \$10,000 (\$2,500 for four years)
Compaq Silver - \$2,000 (one time award)
Bronze - \$1,000 (one time award)
Endowed Leadership - \$1,000 (one time award)
Total:

Number of Awards

Number of Awards	Total
1	\$40,000
2	\$20,000
6	\$12,000
27	\$27,000
2	\$2,000
38	\$101,000

Quick Facts

Operating Budget

FY'02 estimated \$1.667 Billion

Capital Construction Budget

FY 02 estimated \$352 Million



Site Characteristics

Land area 43 sq. mi.
49 Tech areas
1,516 buildings

LANL Regional Contributions

Business

LANL has a \$3.8 billion + impact on the Tri-County region of Santa Fe, Los Alamos and Rio Arriba and is responsible for more than 30 percent of the employment in those counties.

LANL increased small business expenditures in NNM by 89 percent in five years, and reduced payment cycles to small business by 50 percent.

Ombudsman Program for Business created in February, 2000 to address community concerns.

LANL was the catalyst for the formation of the Northern New Mexico Supplier Alliance, a 600-member organization dedicated to increasing business opportunities in NNM.

LANL hosted 5 conferences and expositions to educate business and Lab employees about working together.

Education

LANL helped launch NNM's Math and Science Academy at the Chama, Mora and Española Middle Schools. The program now serves 22 teachers and more than 750 students.

LANL reinstated the machinist apprenticeship program at Northern New Mexico Community College. Students in the four-year program of hands-on machining and academic courses can receive journeyman certification.

The Laboratory Education Equipment Gift Program donated more than \$2 million in excess Lab equipment to educational institutions and non-profits.

The Bradbury Science Museum's Science on Wheels program brought hands-on presentations on cryogenics and static electricity to 2340 elementary and middle school students through-out 25 NNM schools.

Procurement

FY01 Procurement

(Goods and services purchased in support of Lab operations)

Total New Mexico	\$442.6 Million
Total Northern New Mexico	\$357.1 Million

FY01 Payments to NNM Small Business Only

Los Alamos	\$82.6 M
Rio Arriba	\$15.1 M
San Miguel	\$25 K
Sandoval	\$700 K
Santa Fe	\$17 M
Taos	\$48 K
Total	\$115.5 M

Northern New Mexico County Expenditures

Los Alamos	\$317,990,802
Santa Fe	21,112,753
Rio Arriba	16,239,107
Sandoval	1,722,854
Taos	53,478
San Miguel	50,358
Total	\$357,169,352

Contact Information

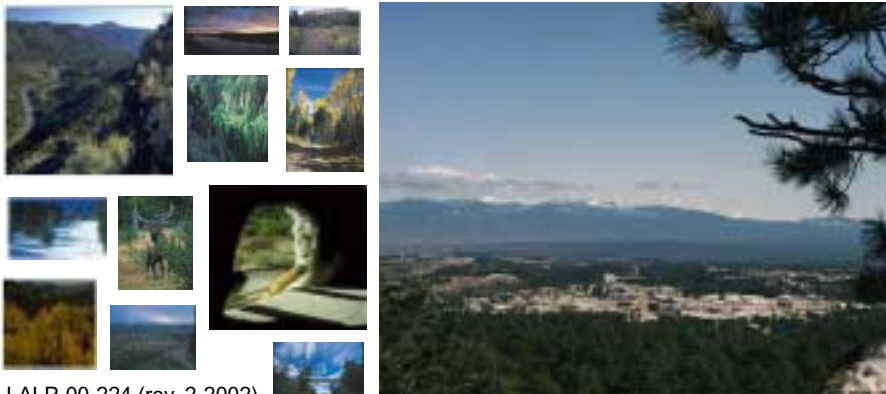
Los Alamos National
Laboratory
Community Relations Office

Telephone:
(505) 665-4400
(800) 508-4400

Fax:
(505) 665-4411

Email Address:
community@lanl.gov

Web site:
[www.lanl.gov/external/
community](http://www.lanl.gov/external/community)



LALP-00-224 (rev. 2-2002)



Los Alamos National Laboratory
is operated by the
University of California for the
U.S. Department of Energy's National
Nuclear Security Administration