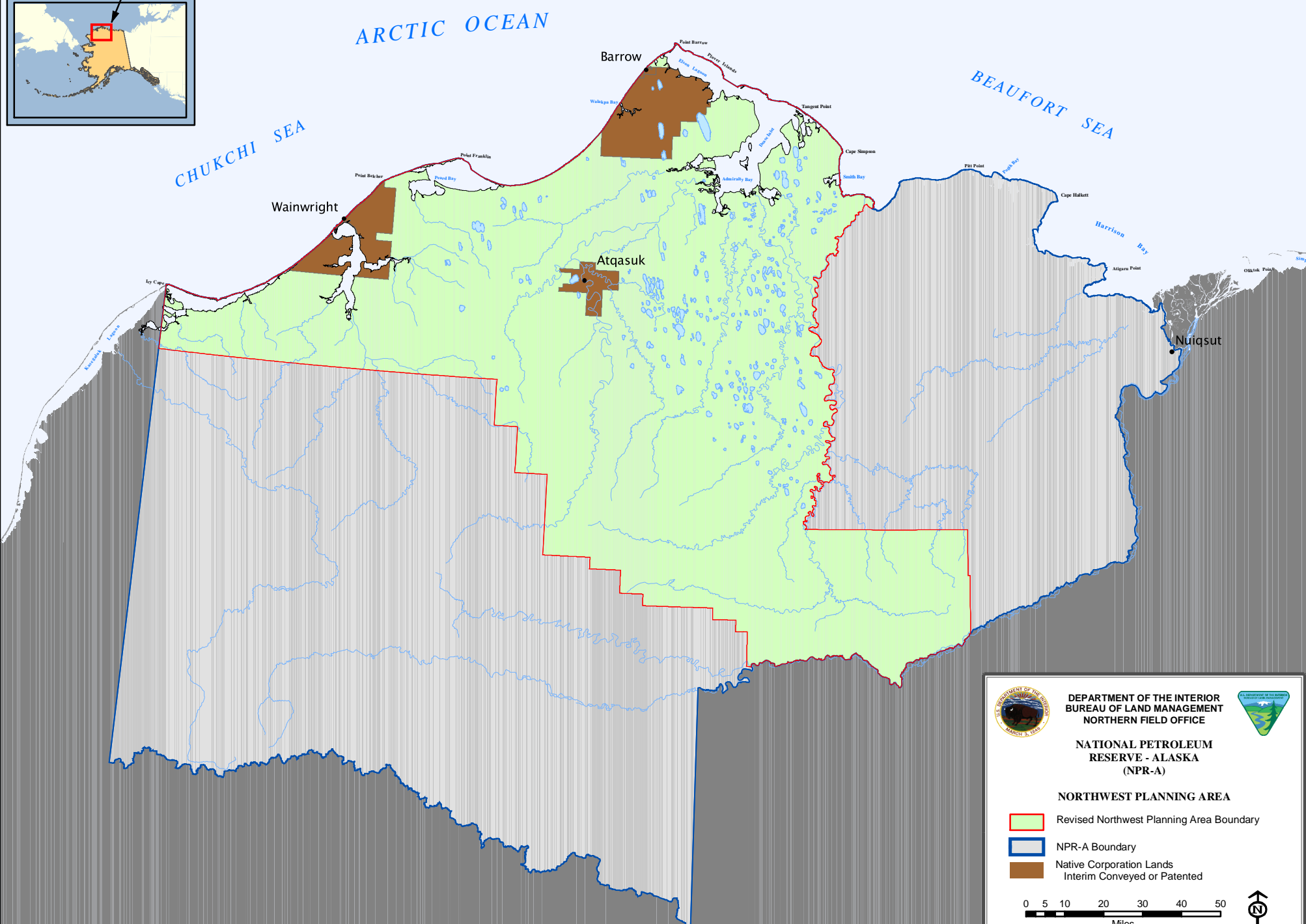
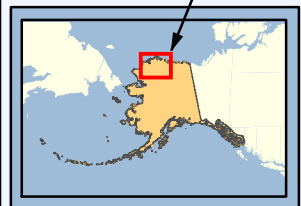




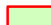
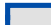

MAP LOCATION




 **DEPARTMENT OF THE INTERIOR**
BUREAU OF LAND MANAGEMENT
NORTHERN FIELD OFFICE

 **NATIONAL PETROLEUM RESERVE - ALASKA (NPR-A)**

NORTHWEST PLANNING AREA

-  Revised Northwest Planning Area Boundary
-  NPR-A Boundary
-  Native Corporation Lands
Interim Conveyed or Patented

0 5 10 20 30 40 50
Miles



The information displayed on this map should be used for graphic display only.
For official land status information, refer to Cadastral Survey Plats, Master Title Plats, and case-files.